



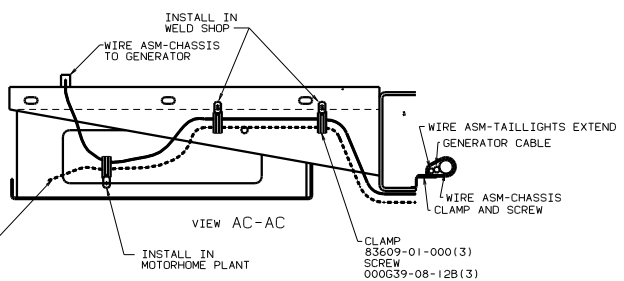
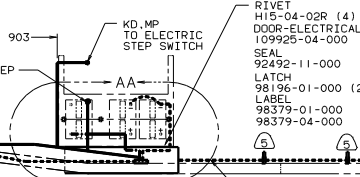
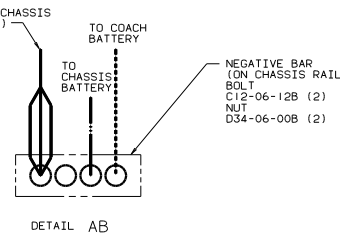
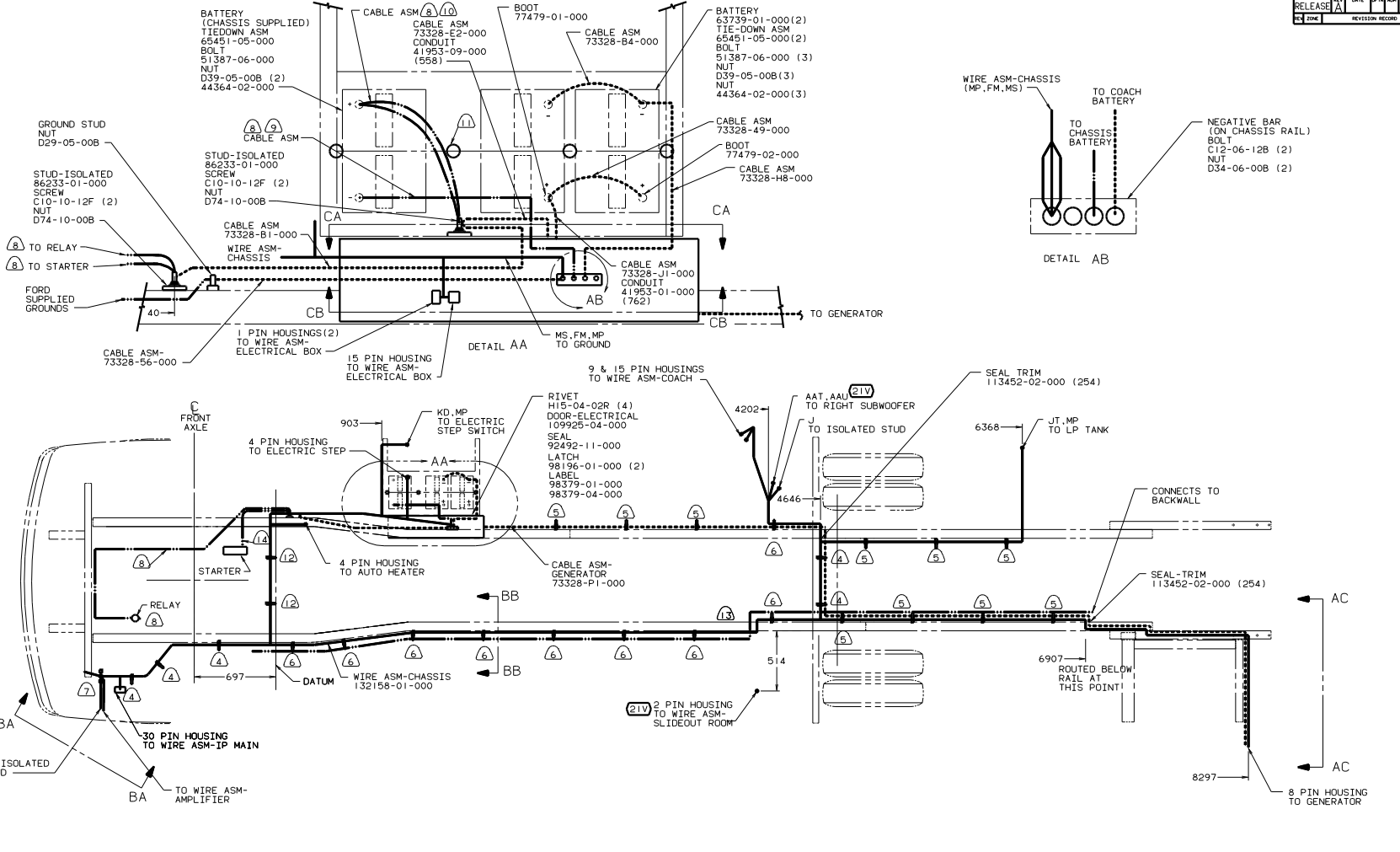
DANGER

Danger of electrical shock, burns or death. Always remove all power sources before attempting any repair, service or diagnostic work. Power can be present from shore power, generator, inverter or battery. All power sources must be disabled and secured before performing any service.



CAUTION

If you lack the skills, tools or equipment to perform diagnostic or repair work leave such work to an authorized Winnebago Industries dealer or other qualified shop.



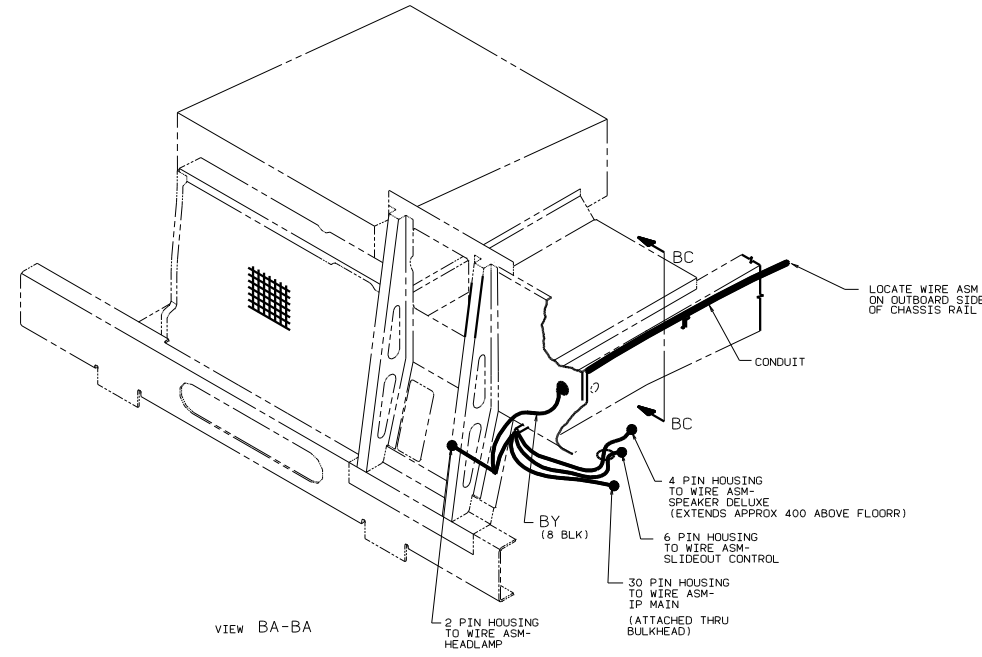
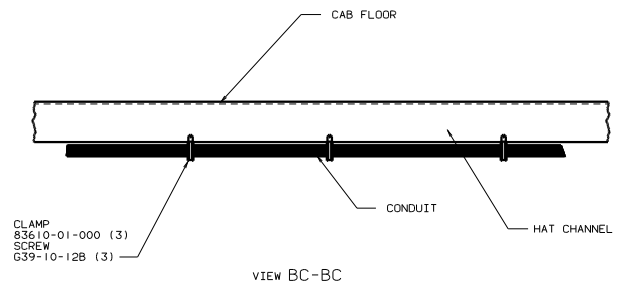
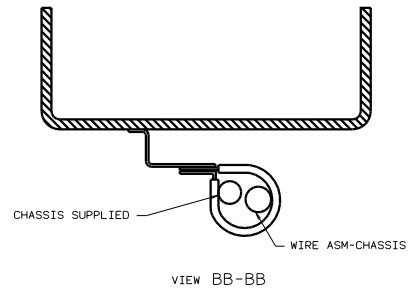
- (12) USE WIRE TIE 8343-03-000.
 - (11) USE TWO NUTS HERE TO ACCOUNT FOR BATTERY HEIGHT DIFFERENCE.
 - (10) CUT 4 AND 6GA CABLES 500MM FROM BATTERY TERMINAL; ADD TERMINAL 8331-01-000(2) TO 4GA CABLES AND TERMINAL 8360-01-000(2) TO 6GA CABLES. CONNECT ALL FOUR TERMINALS TO ISOLATED STUD.
 - (9) TRIM CABLE TO 600MM. ADD TERMINAL 8348-01-000.
 - (8) SUPPLIED WITH CHASSIS.
 - (7) SEE WIRING INSTL-FRONT END FOR ADDITIONAL INFORMATION.
 - (6) CLAMP 10497-02-000 AND SCREW G39-08-000.
 - (5) CLAMP 83609-01-000 AND SCREW G39-08-000.
 - (4) CLAMP 83610-01-000. SCREW G39-08-12B.
 - (3) PLACE AROUND ENTIRE PERIMETER OF DOOR WITH SEAM AT TOP.
2. SECURE CONDUIT 41953-01-02, -03, -10 AND -11 OVER ALL WIRES IN CONTACT WITH SHARP EDGES.
1. LEGEND: — WINNEBAGO; CABLE; - - - - - CHASSIS SUPPLIED WIRING.

- (15) SECURE SO WIRES DO NOT CONTACT EXHAUST.
- (14) BATTERY CABLE MUST BE INSTALLED TO STARTER MOTOR BEFORE ENGINE WIRING HARNESS AND ROUTED IN SUCH A MANNER AS TO PREVENT ANY POSSIBLE DEGRADATION FROM THE EXHAUST SYSTEM.
- (13) ROUTE CABLES OVER CHASSIS RAIL IN THIS AREA. FOLLOW ORIGINAL CABLE PATHS INSIDE RAIL.

FOR ELECTRICAL TORQUE SPECIFICATIONS SEE DWG NO. 128783-01-000

- (265) CODES/STANDARDS-CSA/CMVSS
- (21V) SOUND SYSTEM DELUXE
- (16M) FORD CHASSIS 20,500HP/V10 ENG
- (1B1) CODES/STANDARDS USA

WINNEBAGO		00 L34Y	
OF IN	DATE	UNSPECIFIED TOLERANCES ARE:	MATERIAL
CHP	DATE	UNLESS OTHERWISE SPECIFIED	
DVE	DATE	ONE-PLACE (R.31)	
DVE	DATE	TWO-PLACE (R.31)	
DVE	DATE	ANGLE	
DATE	DATE	THIRD ANGLE PRACTICE	
LANST	DATE	TITLE	
DIA #	SCALE	NOTE	DO NOT SCALE DRAWING
ALL DIMENSIONS ARE IN MILLIMETERS	SHEET	1 OF 3	132157

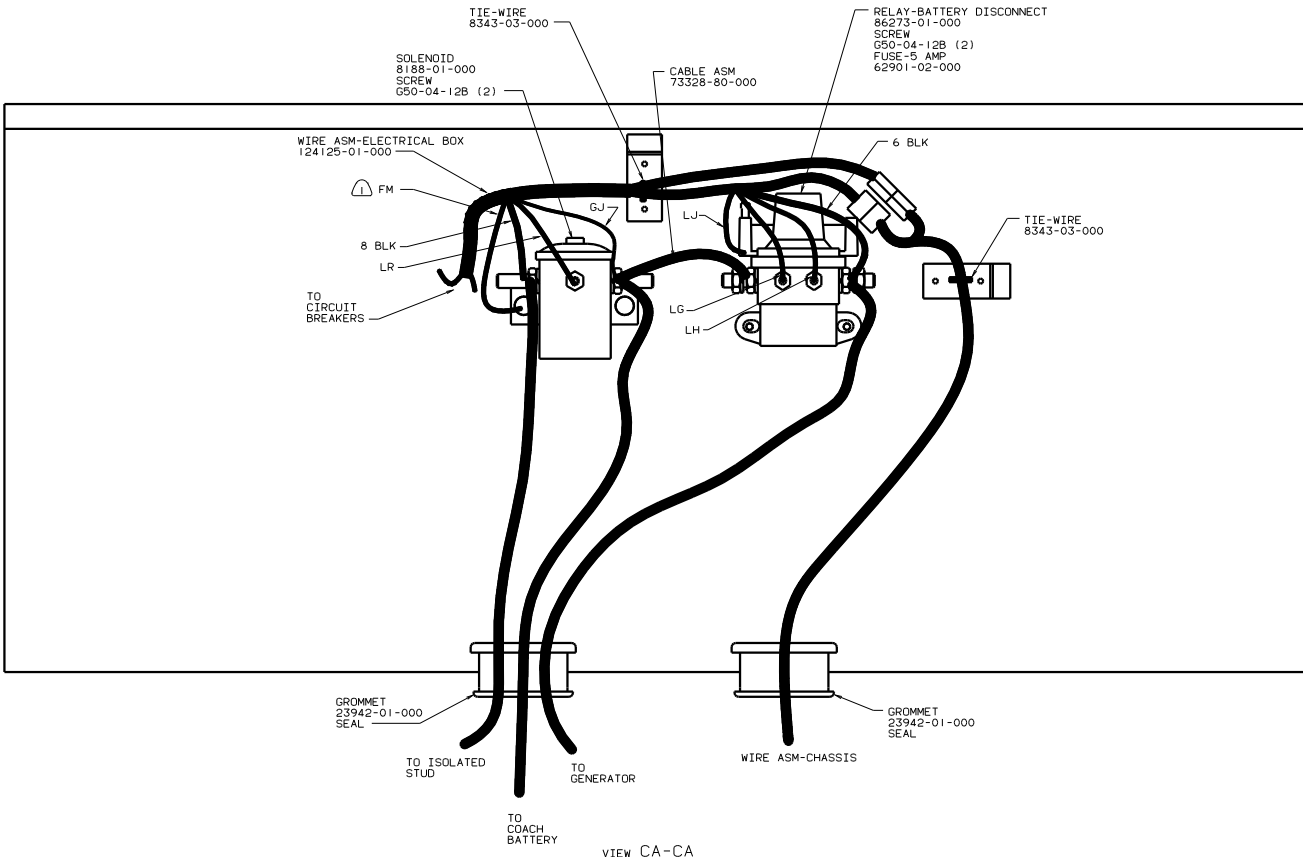


- 6. CUT OFF EXCESS END OF WIRE TIE.
- 5. CONNECT CABLES TO COACH SIDE OF BATTERY DISCONNECT WHEN BATTERY DISCONNECT IS USED.
- 4. FOR ADDITIONAL INFORMATION SEE WIRING INSTALATION FRONT END.
- ③ COVER WITH CONDUIT 41953-10-000 AND 41953-11-000 AS REQUIRED.
- ② SUPPLIED WITH CHASSIS.
- ① WITH DELUXE SOUND. (21V)

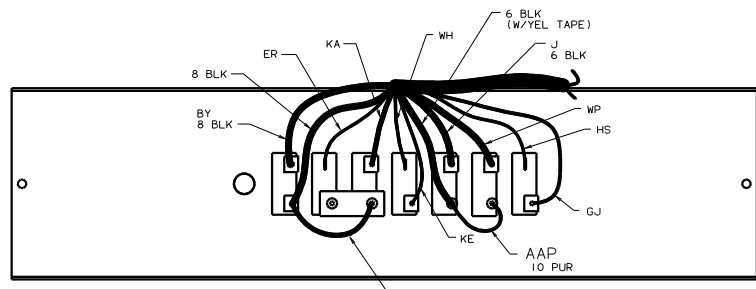
FOR ELECTRICAL TORQUE SPECIFICATIONS SEE DWG NO. 128783-01-000

②65 CODES/STANDARDS-CSA/CMVSS
 ①6M FORD CHASSIS 20,500#/V10 ENG
 ①B1 CODES/STANDARDS USA
 00 L34Y ①B1

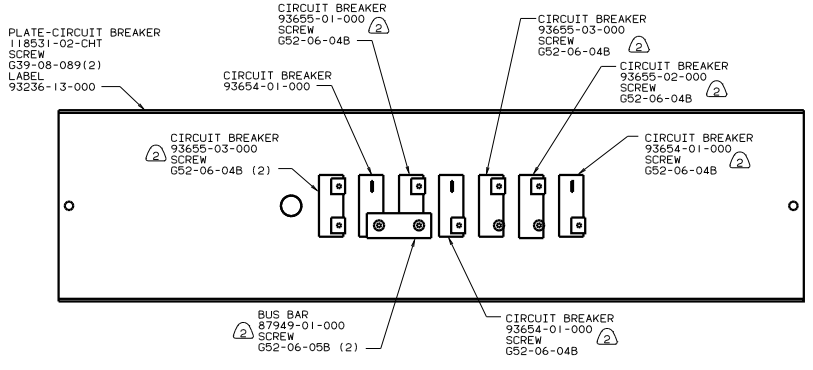
TITLE		WIRING INSTL-CHASSIS	
30 100 SCALE DRAWING	1/8" = 1'-0"	SHEET	2 OF 3
DWG NO		132157	



VIEW CA-CA



VIEW CB-CB (WIRING)



VIEW CB-CB (HARDWARE)

- NOTES:
- (2) ADD LOCKWASHER OME02B-04-071 1 PER SCREW
 - (1) SECURE WITH SOLENOID MOUNTING SCREW.

FOR ELECTRICAL TORQUE SPECIFICATIONS SEE DWG NO. 128783-01-000

(265) CODES/STANDARDS-CSA/CMVSS
 (16M) FORD CHASSIS 20.500#/V10 ENG
 (1B1) CODES/STANDARDS USA

TITLE: WIRING INSTL-CHASSIS	
DR: J.E.H.	DATE: 132157
SHEET: 3 OF 3	