



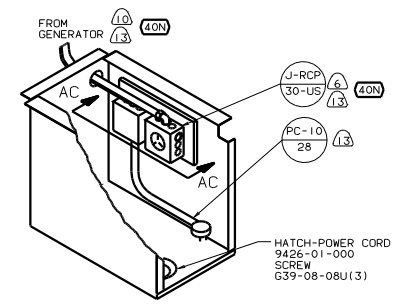
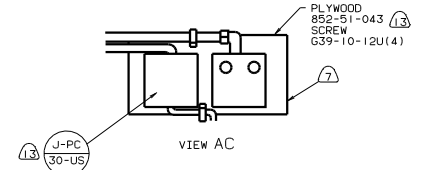
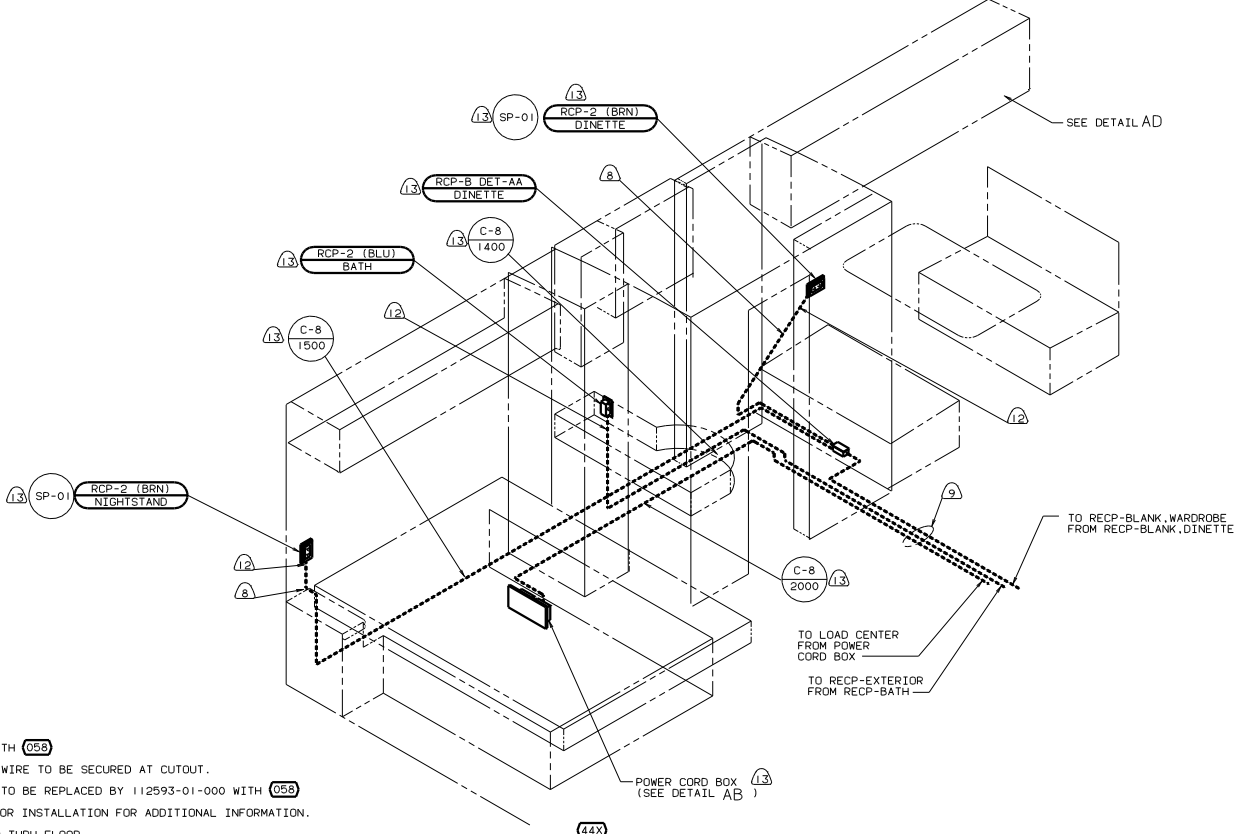
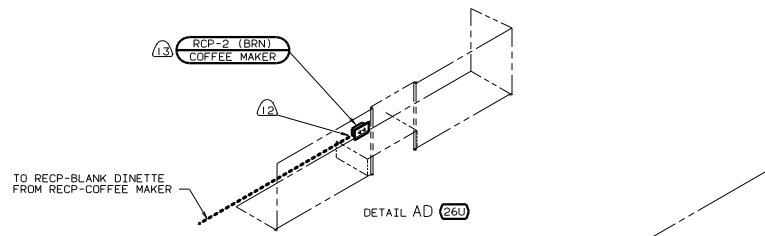
DANGER

Danger of electrical shock, burns or death. Always remove all power sources before attempting any repair, service or diagnostic work. Power can be present from shore power, generator, inverter or battery. All power sources must be disabled and secured before performing any service.

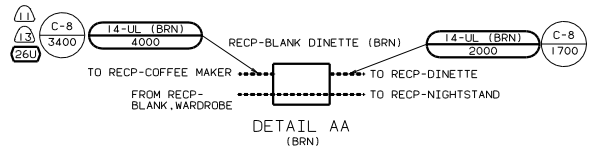


CAUTION

If you lack the skills, tools or equipment to perform diagnostic or repair work leave such work to an authorized Winnebago Industries dealer or other qualified shop.



- (13) NOT USED WITH (05B)
 - (12) WITH (05B) WIRE TO BE SECURED AT CUTOUT.
 - (11) WIRE 14-UL TO BE REPLACED BY 112593-01-000 WITH (05B)
 - (10) SEE GENERATOR INSTALLATION FOR ADDITIONAL INFORMATION.
 - (9) WIRE ROUTED THRU FLOOR.
 - (8) WIRE ROUTED THRU SIDEWALL.
 - (7) PAINT EXPOSED SURFACES BLACK WITH 106112-01-000.
 - (6) INSTALL RECEPTACLE WITH GROUND TOWARD TOP SIDE OF VEHICLE.
 - (5) SEE BODY INSTL-DOORS & COMPARTMENTS FOR ADDITIONAL INFORMATION.
4. SEAL ALL HOLES THRU FLOOR.
 3. ALL GROUND WIRES TO BE COVERED WITH TUBING 8041-02-000.
 2. ALL WIRES ARE TO BE CLAMPED WITH CLAMP 10497-05-000 WITHIN 200 OF OUTLET BOXES. USE SCREW G67-10-12B, UNLESS OTHERWISE NOTED.
 1. ALL WIRE TO BE CLAMPED WITH CLAMP 10495-01-000 OR CLIP 80734-02-000 EVERY 600. USE SCREW G67-10-12B UNLESS OTHERWISE SPECIFIED.

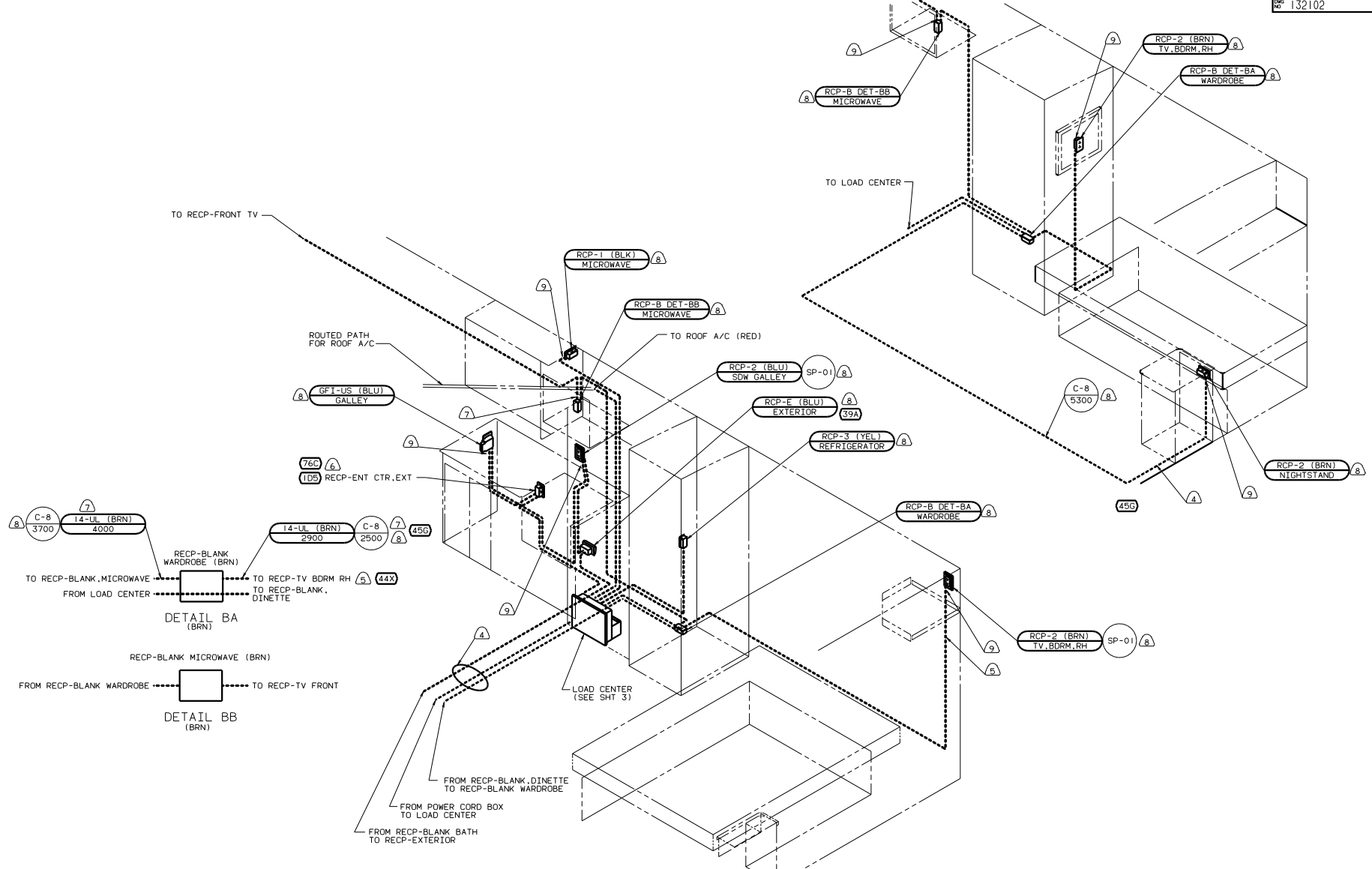


- (40N) GEN-4.0KW-ONAN-GAS-MICROLITE
- (26U) COFFEE MAKER
- (12D) ELECTRICAL SYSTEM 30 AMP
- (1B1) CODES/STANDARDS USA
- (05B) EUROPEAN EXPORT PREP-PARTIAL
- (1B1) (12D)

WINNACG		00 F26P	
OF 11	DATE	UNSPECIFIED TOLERANCES ARE:	MATERIAL
CHP	DATE	WHOLE OR 1/16"	
PIE	DATE	ONE-PLACE (X.X1)	
D/E	DATE	TWO-PLACE (X.XX)	
COMD	DATE	THREE-PLACE (X.XXX)	
LAND	DATE	THREE WHOLE INCHES	
WIRING INSTL-BODY 110V(130UL)			
SHEET NO	SCALE	NOTE	DATE
1 OF 7	1:1	SEE DWG NO. 121339-01-000	132102

FOR ELECTRICAL TORQUE SPECIFICATIONS SEE DWG NO. 128783-01-000

(X-X) FOR ELECTRICAL CALLOUTS SEE DWG NO. 121339-01-000



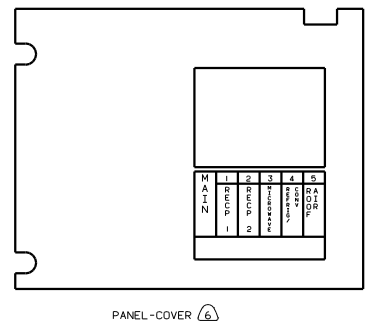
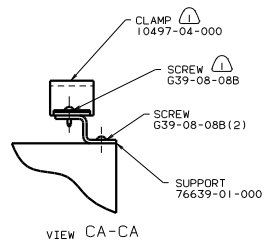
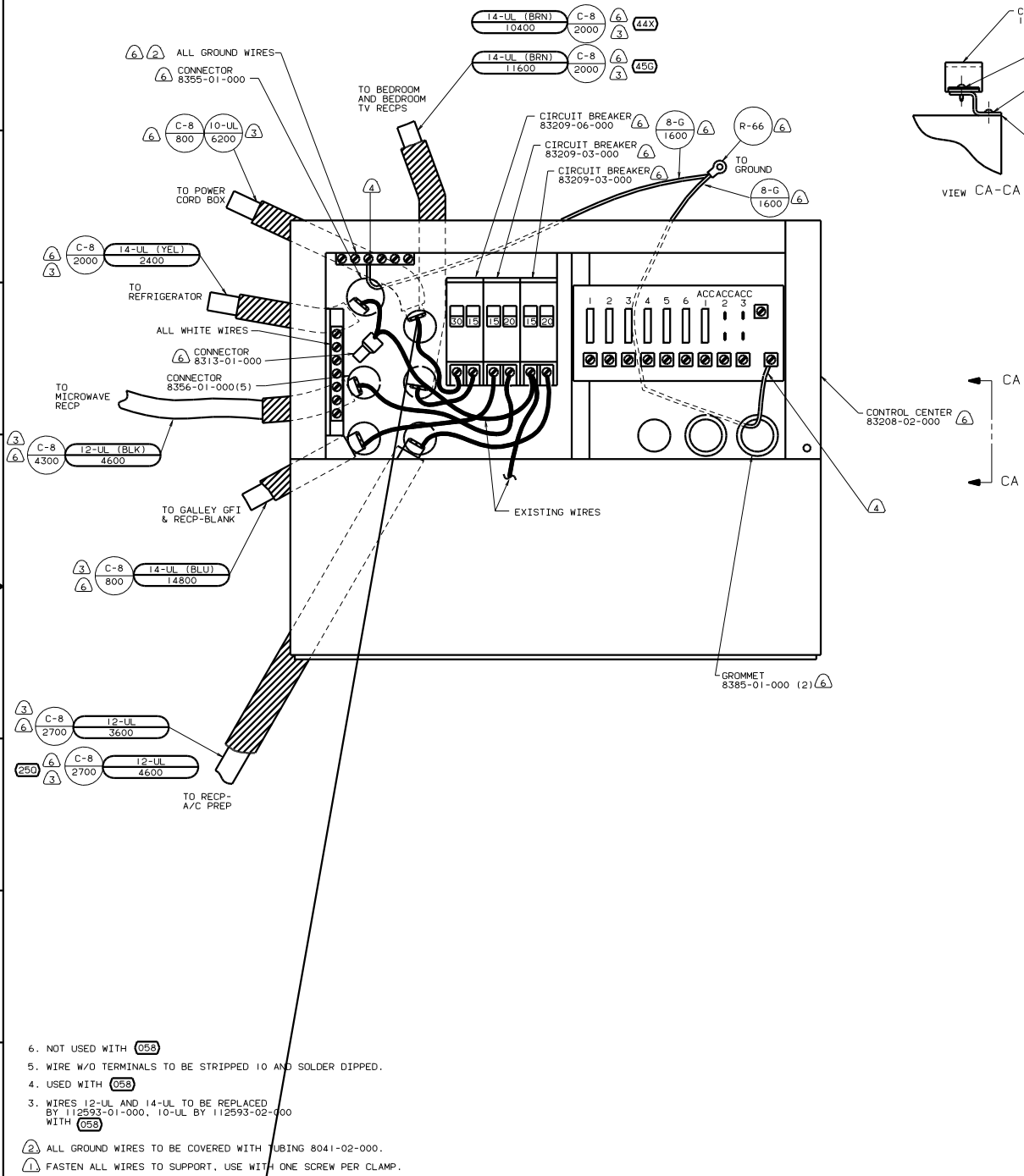
- 9 WITH 058 WIRE TO BE SECURED AT CUTOUT.
 - 8 NOT USED WITH 058
 - 7 WIRE 14-UL TO BE REPLACED BY 112593-01-000 WITH 058
 - 6 SEE ENTERTAINMENT CENTER COMP. FOR ADDITIONAL INFORMATION.
 - 5 WIRE ROUTED IN SIDEWALL.
 - 4 WIRE ROUTED THRU FLOOR.
3. ALL GROUND WIRES TO BE COVERED WITH TUBING 8041-02-000.
 2. ALL WIRES ARE TO BE CLAMPED WITH CLAMP 10497-05-000 WITHIN 200 OF OUTLET BOXES. USE SCREW G67-10-128, UNLESS OTHERWISE NOTED.
 1. ALL WIRE TO BE CLAMPED WITH CLAMP 10495-01-000 OR CLIP 80734-02-000 EVERY 600. USE SCREW G67-10-128 UNLESS OTHERWISE SPECIFIED.

- 39A EXT RECEPTACLE DPLX 120VAC
- 76C ENTERTAINMENT CTR/EXT CASSETTE
- 45G BED-TWINS
- 44X BED-QUEEN SIDEWALL
- 12D ELECTRICAL SYSTEM 30 AMP
- 1D5 ENTERTAINMENT CENTER/EXT W/CD
- 1B1 CODES/STANDARDS USA
- 058 EUROPEAN EXPORT PREP-PARTIAL

FOR ELECTRICAL TORQUE SPECIFICATIONS SEE DWG NO. 128783-01-000

FOR ELECTRICAL CALLOUTS SEE DWG NO. 121339-01-000

00 F26P (1B) (12D)



- 6. NOT USED WITH 058
- 5. WIRE W/O TERMINALS TO BE STRIPPED 10 AND SOLDER DIPPED.
- 4. USED WITH 058
- 3. WIRES 12-UL AND 14-UL TO BE REPLACED BY 112593-01-000, 10-UL BY 112593-02-000 WITH 058
- 2. ALL GROUND WIRES TO BE COVERED WITH TUBING 8041-02-000.
- 1. FASTEN ALL WIRES TO SUPPORT. USE WITH ONE SCREW PER CLAMP.

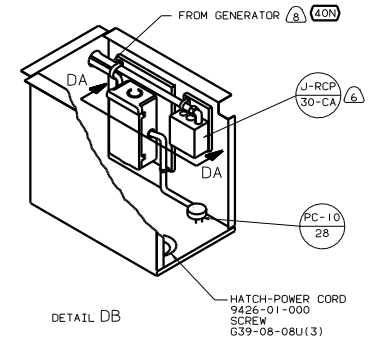
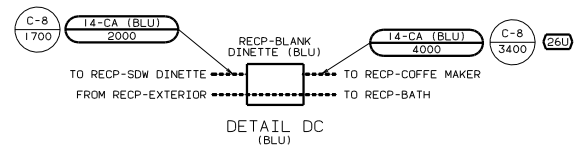
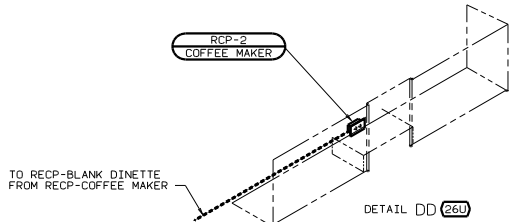
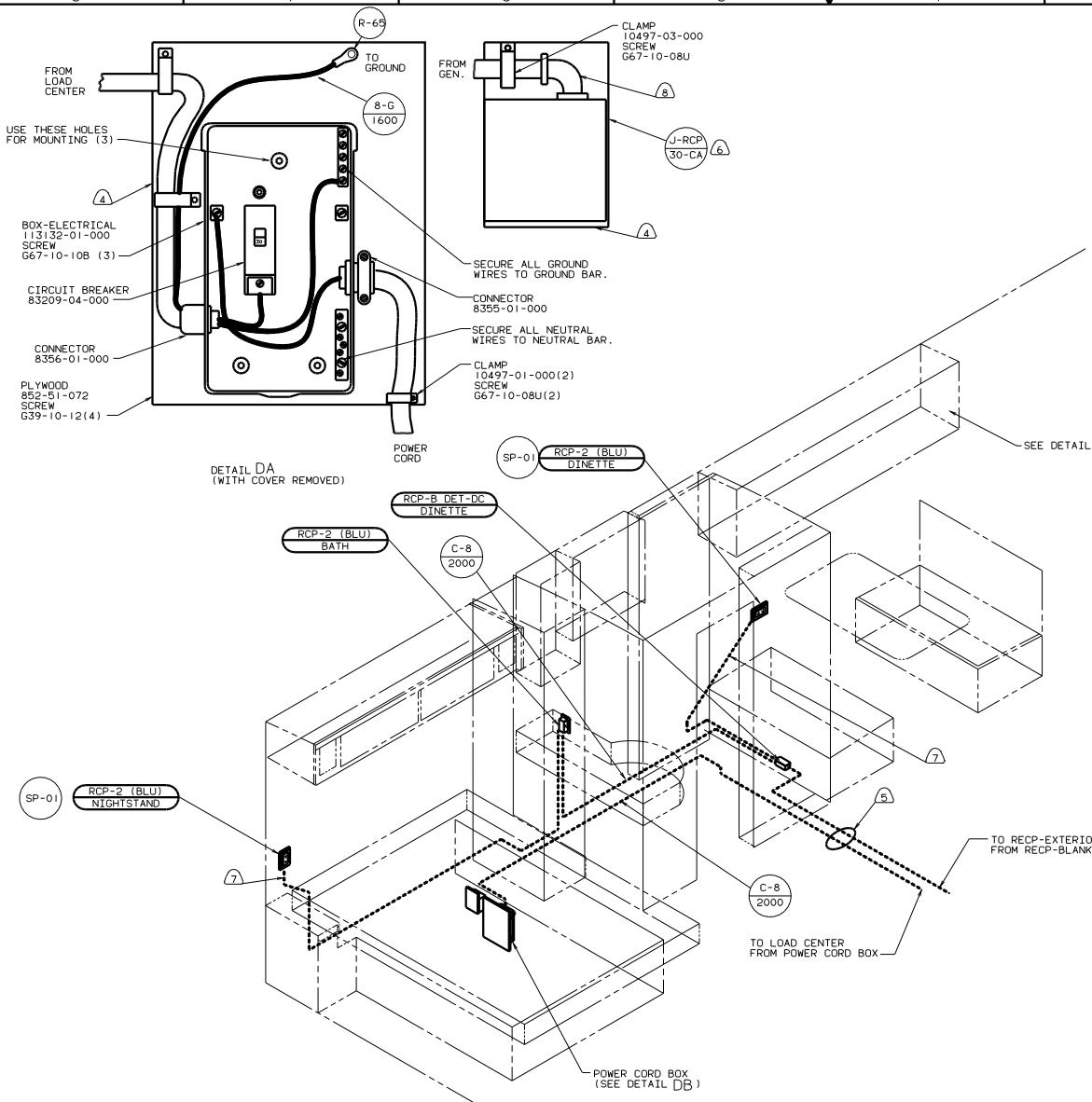
FOR ELECTRICAL TORQUE SPECIFICATIONS SEE DWG NO. 128783-01-000

FOR ELECTRICAL CALLOUTS SEE DWG NO. 121339-01-000

- 459 BED-TWINS
- 44X BED-QUEEN SIDEWALL
- 250 A/C ROOF AIR (1) 14,800 BTU
- 120 ELECTRICAL SYSTEM 30 AMP
- 181 CODES/STANDARDS USA
- 058 EUROPEAN EXPORT PREP-PARTIAL

00 F26P 181 120

FILE NO	121339-01-000
WIRING INSTL - BODY, 110V(30LCUL)	
SHEET 3 OF 7	DWG NO 132102



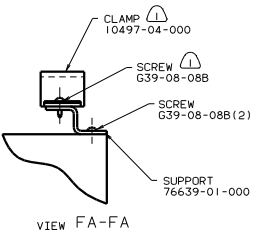
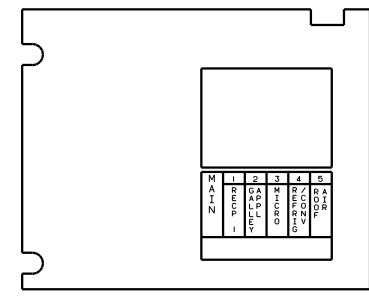
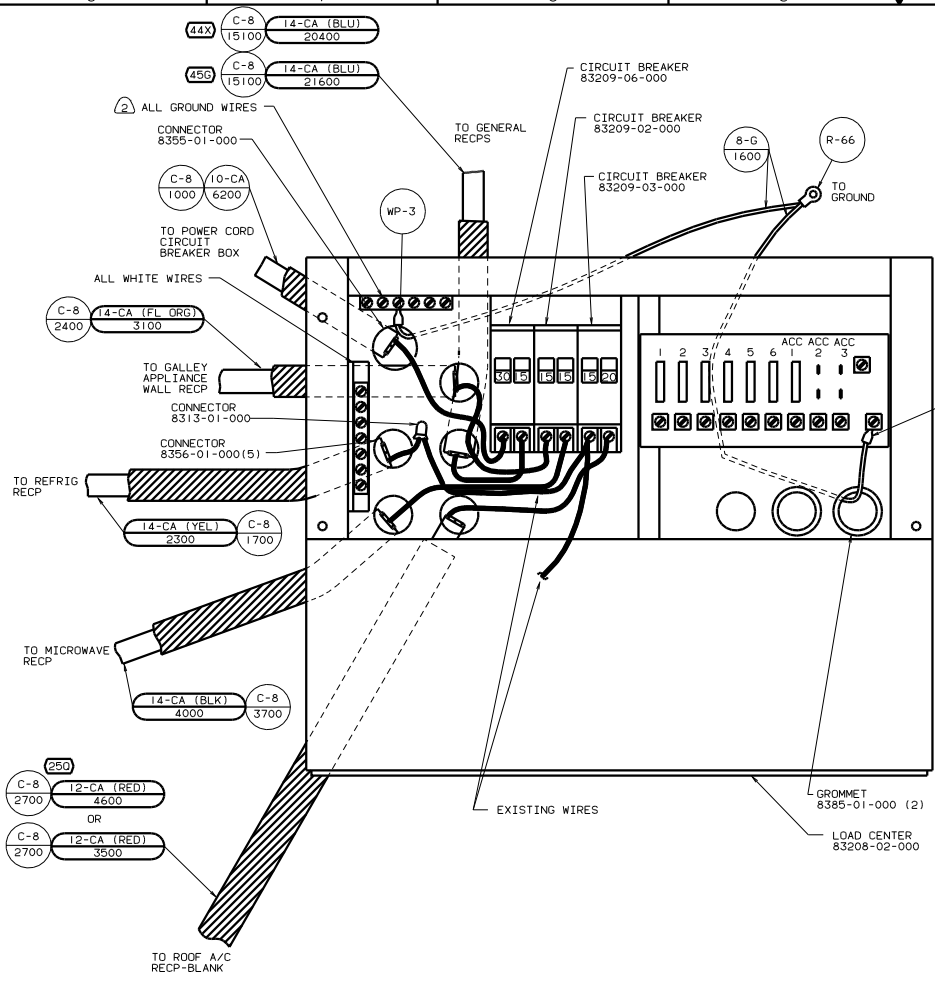
- NOTES:
- 1. ALL WIRE TO BE CLAMPED WITH CLAMP 10495-01-000 OR CLIP 80734-02-000 EVERY 600, USE SCREW G67-10-12B UNLESS OTHERWISE SPECIFIED.
 - 2. ALL WIRES ARE TO BE CLAMPED WITH CLAMP 10497-05-000 WITHIN 200 OF OUTLET BOXES, USE SCREW G67-10-12B, UNLESS OTHERWISE NOTED.
 - 3. ALL GROUND WIRES TO BE COVERED WITH TUBING 8041-02-000.

- (8) SEE GENERATOR INSTALLATION FOR ADDITIONAL INFORMATION.
- (7) WIRE ROUTED THRU SIDEWALL.
- (6) INSTALL RECP WITH GROUND TOWARD TOP SIDE OF VEHICLE.
- (5) WIRE ROUTED THRU FLOOR.
- (4) PAINT EXPOSED SURFACES BLACK WITH 108112-01-000.

- (45G) BED-TWINS
- (44X) BED-QUEEN SIDEWALL
- (40N) GEN-4.0KW-ONAN-GAS-MICROLITE
- (26S) CODES/STANDARDS-CSA/CMVSS
- (26U) COFFEE MAKER
- (12D) ELECTRICAL SYSTEM 30 AMP

FOR ELECTRICAL TORQUE SPECIFICATIONS SEE DWG NO. 128783-01-000

FOR ELECTRICAL CALLOUTS SEE DWG NO. 121339-01-000



2 ALL GROUND WIRES TO BE COVERED WITH TUBING 8041-02-000.
 1 FASTEN ALL WIRES TO SUPPORT. USE ONE SCREW PER CLAMP.

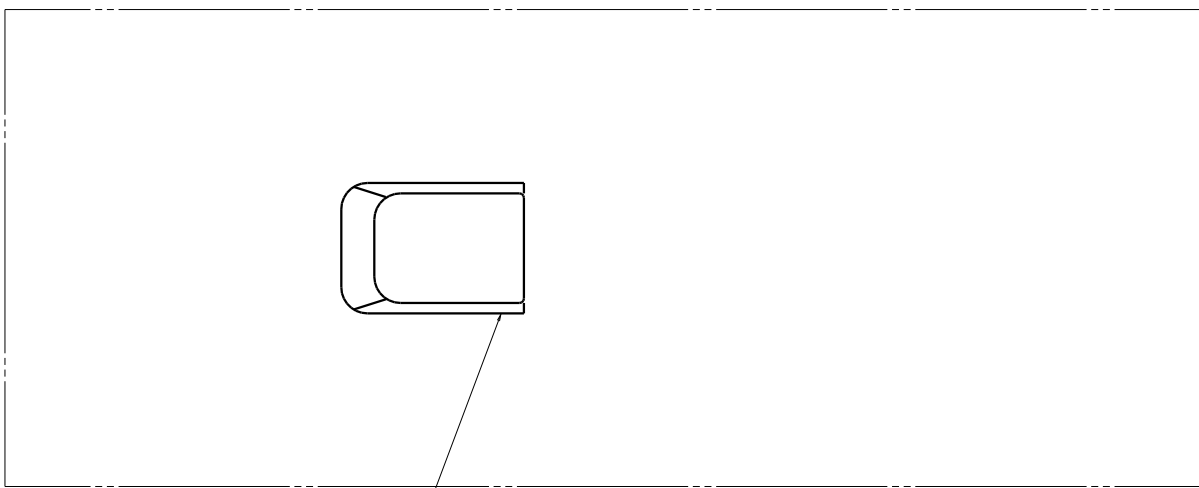
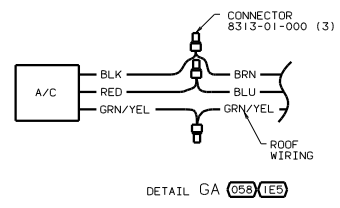
- 450 BED-TWINS
- 44X BED-QUEEN SIDEWALL
- 265 CODES/STANDARDS-CSA/CMVSS
- 250 A/C ROOF AIR (1) 14,800 BTU
- 120 ELECTRICAL SYSTEM 30 AMP

FOR ELECTRICAL TORQUE SPECIFICATIONS SEE DWG NO. 128783-01-000

FOR ELECTRICAL CALLOUTS SEE DWG NO. 121339-01-000

WIRING INSTL-BODY_110V(30LCCA)
 SHEET 6 OF 7
 132102

00 F26P 265 120



- (250) AIR CONDITIONER
131188-01-CHT
(14800 BTU)
- (290) (131185-01-CHT)
(13500 BTU)
- CEILING ASM
131184-01-CHT
BOARD-DIVIDER
131184-02-CHT
- (058) AIR CONDITIONER
130671-01-CHT
(13500 220V)
- CEILING ASM-A/C DUCTED
130671-02-CHT
FOR WIRING
(SEE DETAIL GA)

- (1E5) A/C ROOF/EXPORT-ONE
 - (265) CODES/STANDARDS-CSA/CMVSS
 - (1B1) CODES/STANDARDS USA
 - (290) A/C ROOF-ONE 13,500 BTU
 - (250) A/C ROOF AIR (1) 14,800 BTU
 - (058) EUROPEAN EXPORT PREP-PARTIAL
- 00 F26P (1B1) (265)

(1) SEE WIRING INSTL-BODY.12V FOR ADDITIONAL INFORMATION.

NOTES: