



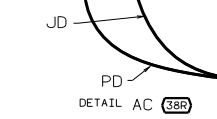
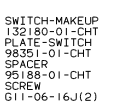
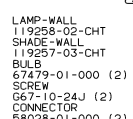
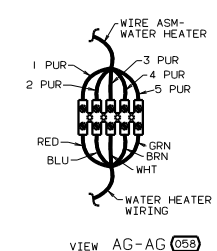
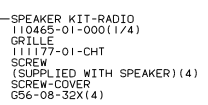
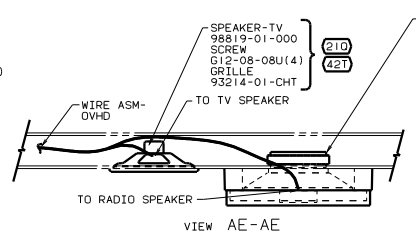
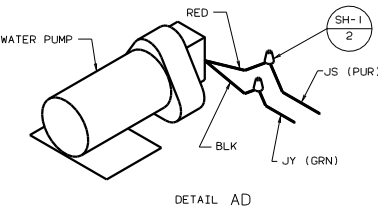
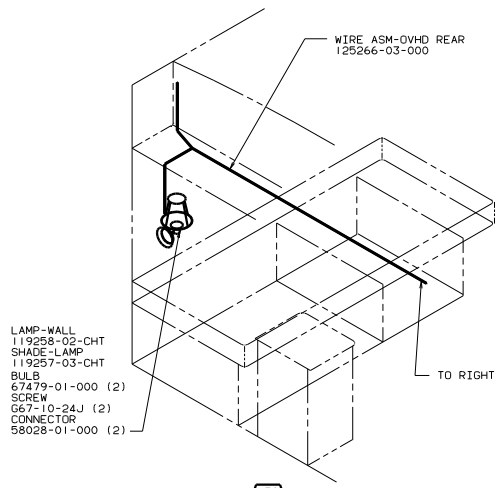
DANGER

Danger of electrical shock, burns or death. Always remove all power sources before attempting any repair, service or diagnostic work. Power can be present from shore power, generator, inverter or battery. All power sources must be disabled and secured before performing any service.

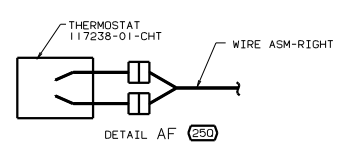
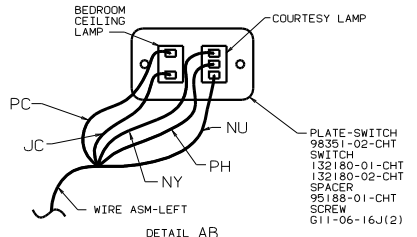
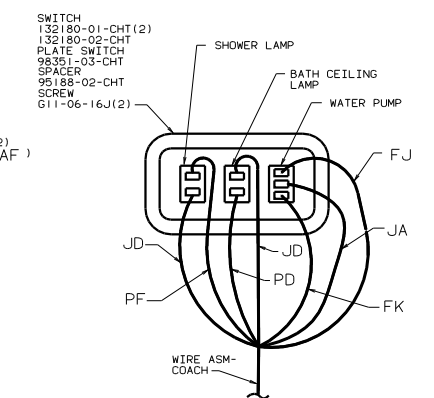
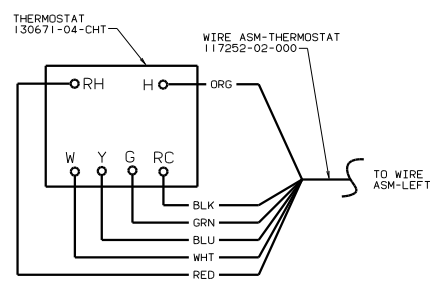
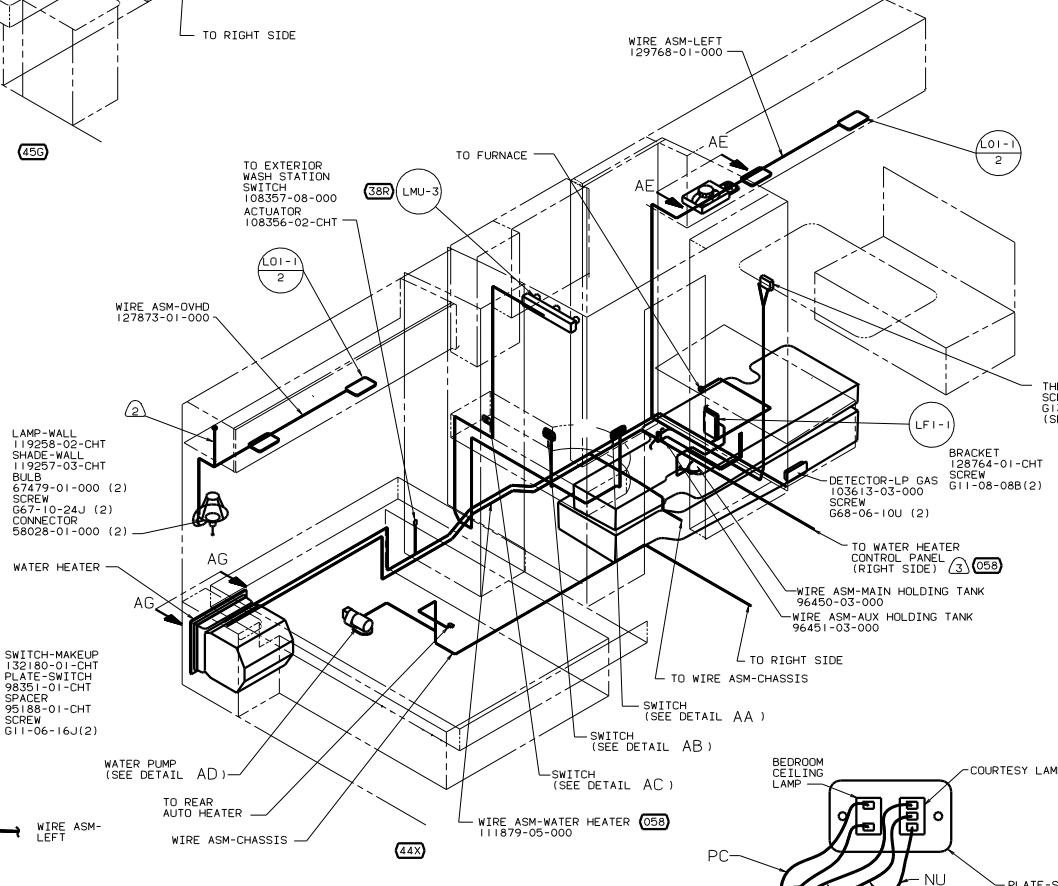


CAUTION

If you lack the skills, tools or equipment to perform diagnostic or repair work leave such work to an authorized Winnebago Industries dealer or other qualified shop.



NOTES:
 1. ALL WIRES TO BE CLAMPED WITH CLAMP 10495-01-000 OR CLIP 80734-02-000 EVERY 600. USE SCREW G67-10-02B UNLESS OTHERWISE SPECIFIED.
 2. COVER WITH CONDUIT 41953-02-000 IN THIS AREA.
 3. WIRE ROUTED THRU FLOOR.



- (49X) BED-QUEEN - BACKWALL
- (45B) BED-TWINS
- (42T) TV-19" FRONT W/VIDEO SEL
- (38R) COMFORT & CONVENIENCE PKG
- (265) CODES/STANDARDS-CSA/CMVSS
- (250) A/C ROOF AIR (1) 14,800 BTU
- (210) TV-19" W/VCR/VIDEO SELECTION
- (1E5) A/C ROOF/EXPORT-ONE
- (1B1) CODES/STANDARDS USA
- (05B) EUROPEAN EXPORT PREP-PARTIAL

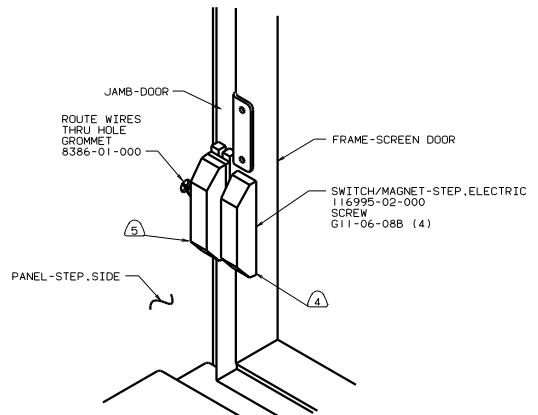
FOR ELECTRICAL TORQUE SPECIFICATIONS SEE DWG NO. 128783-01-000

(X-X) FOR ELECTRICAL CALLOUTS SEE DWG NO. 121359-01-000

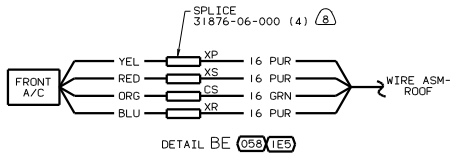
WINNEBAGO 00 F26P

OF IN	DATE	UNSPECIFIED TOLERANCES ARE:	MATERIAL
CHP	DATE	FRAC. DIM. (X.XX)	
PIE	DATE	ONE-PLACE (X.XX)	
D/E	DATE	ANGLE	
CDM	DATE	INDIC. W/ANGLE	

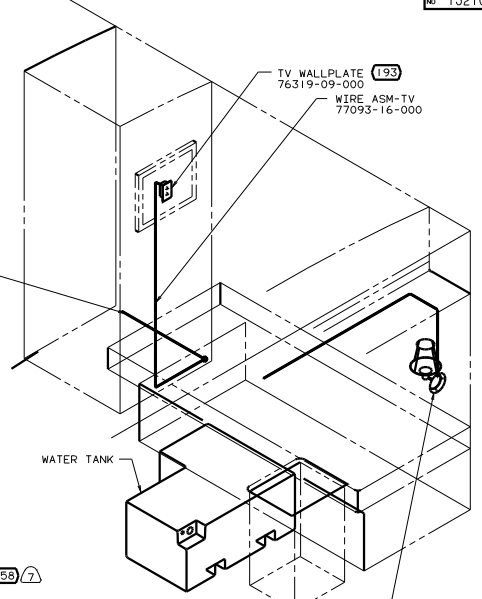
132101



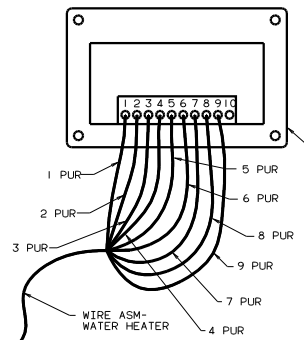
DETAIL BC (IE2)



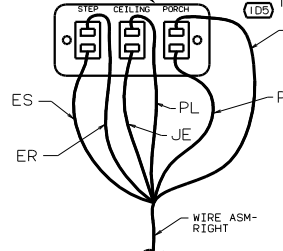
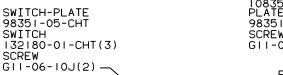
DETAIL BE (058) (IE5)



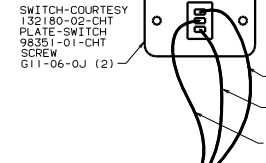
- 119258-02-000 LAMP-WALL
- 119257-03-000 SHADE-WALL
- 67479-01-000 (2) BULB
- G67-10-24J (2) SCREW
- 58026-01-000 (2) CONNECTOR



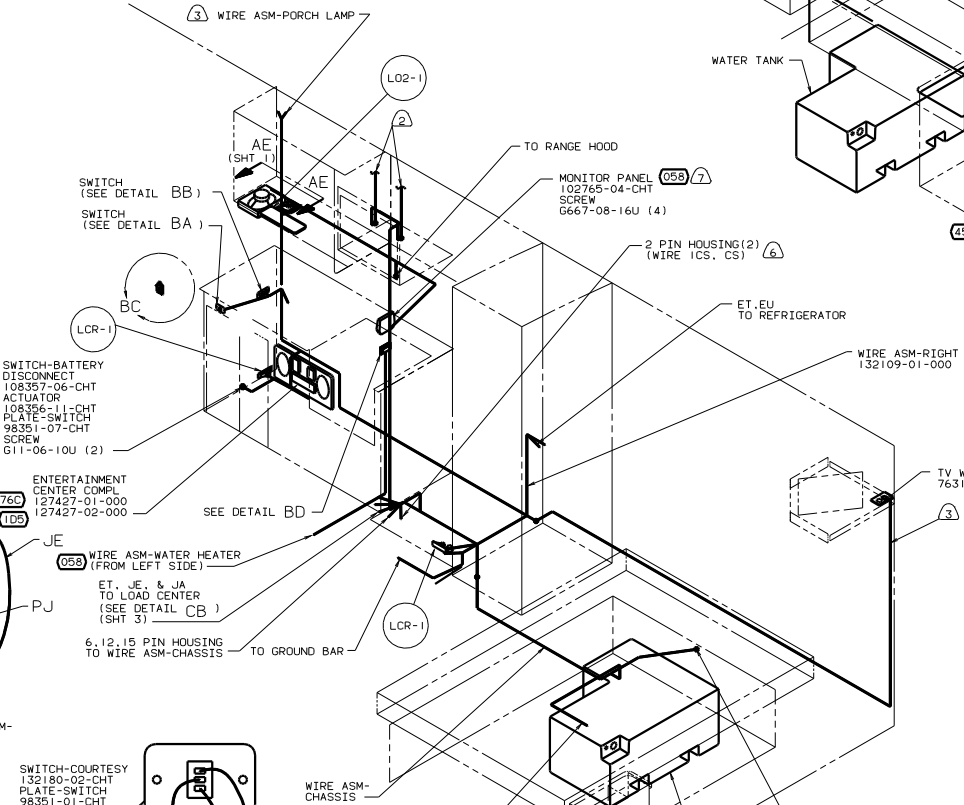
DETAIL BD (058)



DETAIL BB



DETAIL BA



- (8) REMOVE TERMINALS FROM WIRE ASM-ROOF - ADD SPLICES.
 - (7) REPLACE WATER HEATER SWITCH WITH SWITCH-DUMMY 89303-01-CHT AND CONNECT WIRES TO SWITCH TOGETHER WITH SPLICE 31876-04-000.
 - (6) WIRES CS AN ICS MUST BE DISCONNECTED WITH IEB A/C ROOF EXPORT-ONE.
 - (5) MOUNT SWITCH AND SPACER TO BLOCK ON JAMB ADJUST HEIGHT TO MATCH MAGNET.
 - (4) MOUNT MAGNET USING PILOT HOLES IN SCREEN DOOR FRAME. MOUNT WITH MAGNET TOWARD SWITCH.
 - (3) WIRE ROUTED IN SIDEWALL.
 - (2) WIRE ROUTED IN ROOF.
1. ALL WIRES TO BE CLAMPED WITH CLAMP 10495-01-000 OR CLIP 80734-02-000 EVERY 600. USE SCREW G67-10-02B UNLESS OTHERWISE SPECIFIED.

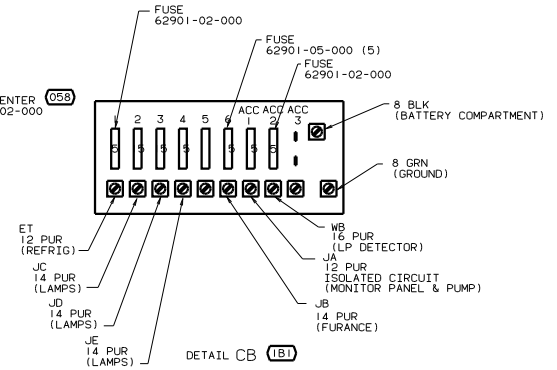
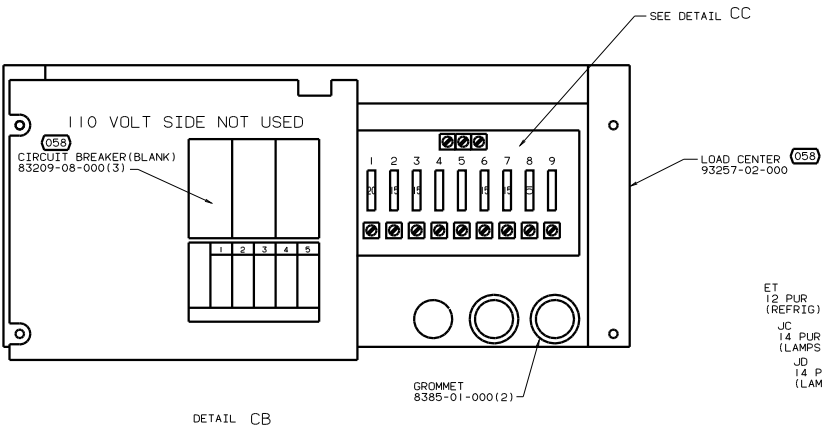
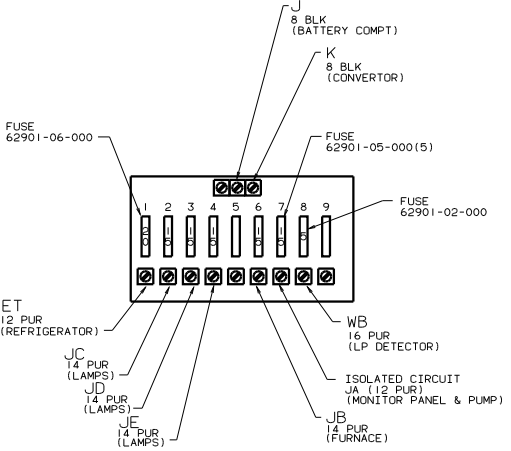
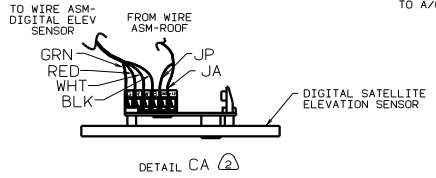
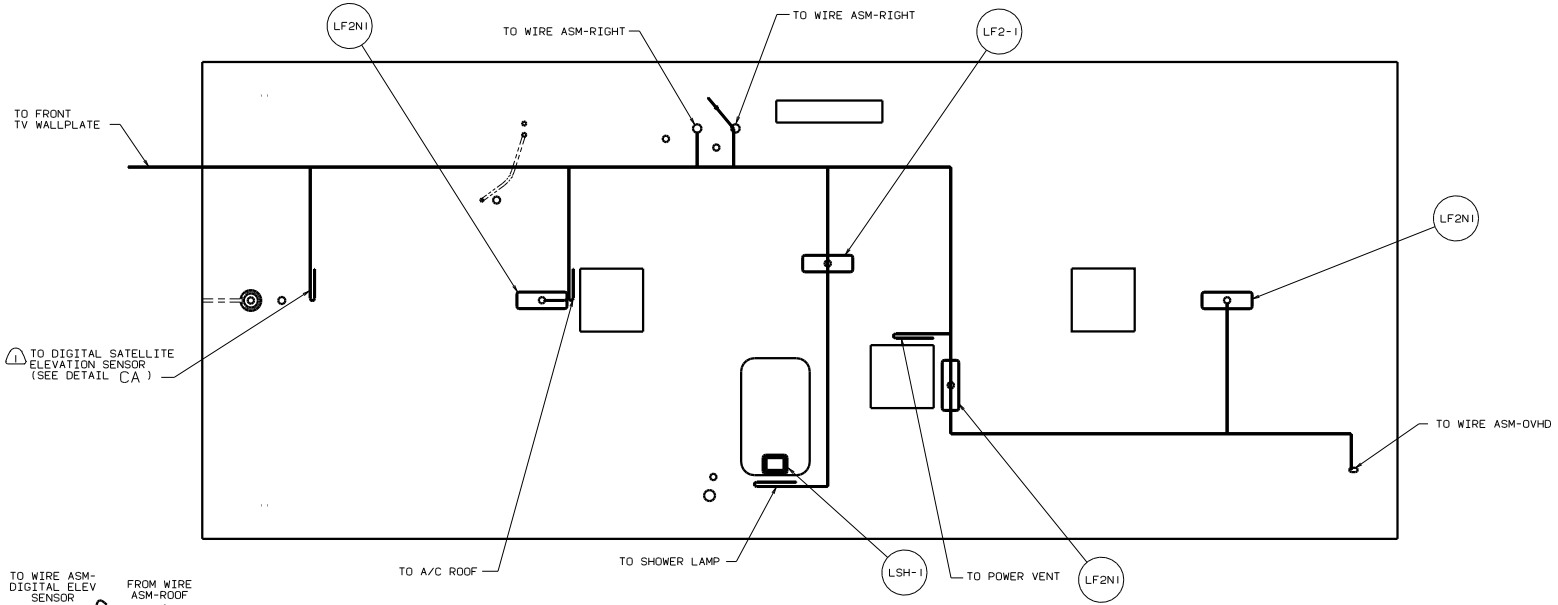
NOTES:

FOR ELECTRICAL TORQUE SPECIFICATIONS SEE DWG NO. 128783-01-000

FOR ELECTRICAL CALLOUTS SEE DWG NO. 121339-01-000

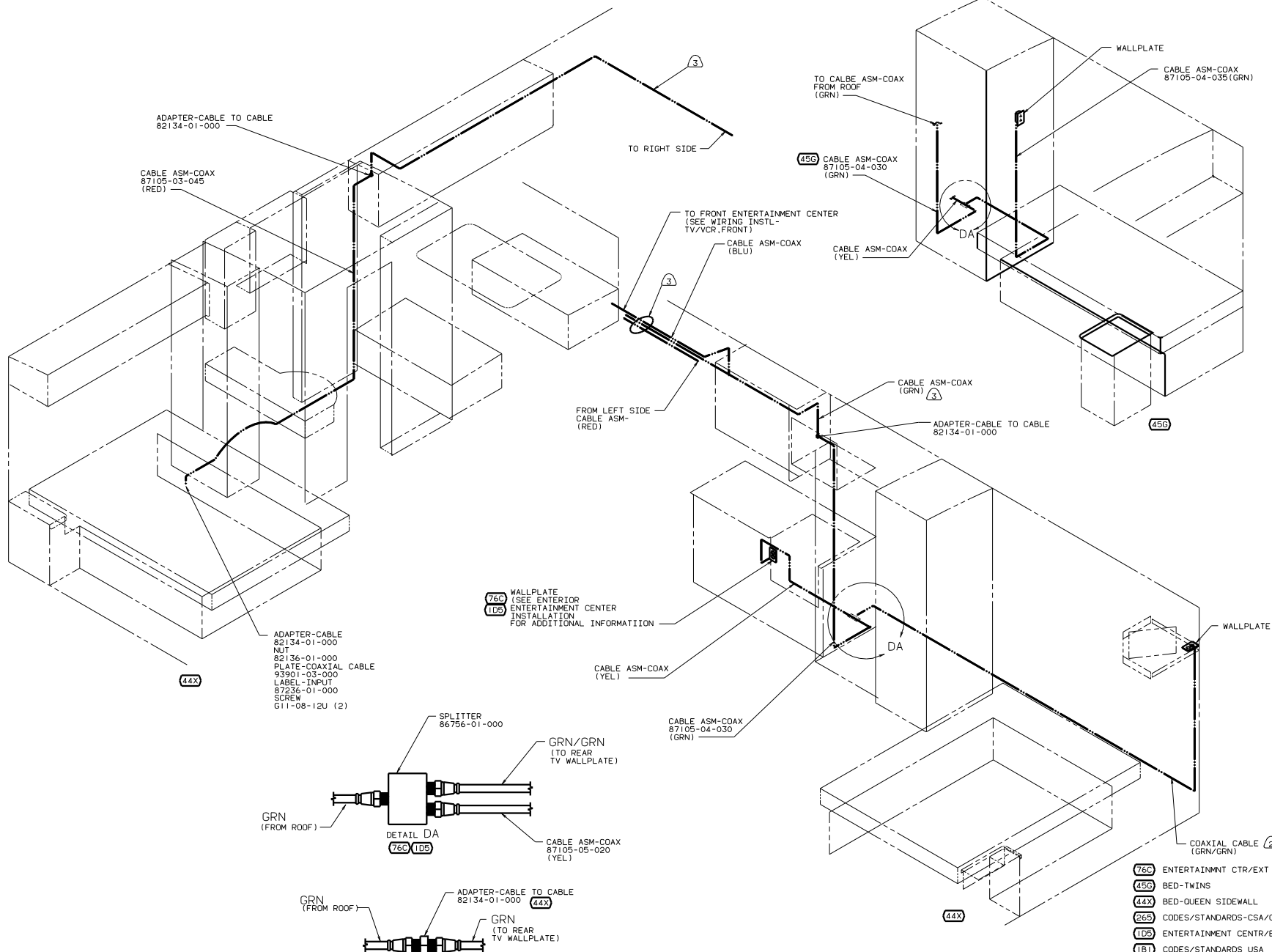
- (IE2) ENTRANCE STEP-ELEC.
- (455) BED-TWINS
- (44X) BED-QUEEN SIDEWALL
- (265) CODES/STANDARDS-CSA/CMVSS
- (193) TV ANTENNA
- (IE5) A/C ROOF/EXPORT-ONE
- (1B1) CODES/STANDARDS USA
- (058) EUROPEAN EXPORT PREP-PARTIAL

00 F26P (1B1) (265)



- 2. WITH (480)
- 1. SATELLITE SYSTEM-READY.

- (058) EUROPEAN EXPORT PREP-PARTIAL
- (48M) LIGHTS-INCANDESCENT
- (480) SATELLITE DISH
- (265) CODES/STANDARDS-CSA/CMVSS
- (IBI) CODES/STANDARDS USA



ADAPTER-CABLE TO CABLE
82134-01-000

CABLE ASM-COAX
87105-03-045
(RED)

TO RIGHT SIDE

TO CALBE ASM-COAX
FROM ROOF
(GRN)

WALLPLATE

CABLE ASM-COAX
87105-04-035
(GRN)

(45G) CABLE ASM-COAX
87105-04-030
(GRN)

TO FRONT ENTERTAINMENT CENTER
(SEE WIRING INSTL-
TV/VCR, FRONT)

CABLE ASM-COAX
(BLU)

CABLE ASM-COAX
(YEL)

CABLE ASM-COAX
(GRN)

ADAPTER-CABLE TO CABLE
82134-01-000

FROM LEFT SIDE
CABLE ASM-
(RED)

(76C) WALLPLATE
(105) (SEE EXTERIOR
ENTERTAINMENT CENTER
INSTALLATION
FOR ADDITIONAL INFORMATION)

CABLE ASM-COAX
(YEL)

CABLE ASM-COAX
87105-04-030
(GRN)

ADAPTER-CABLE
82134-01-000
NUT
82136-01-000
PLATE-COAXIAL CABLE
93901-03-000
LABEL-INPUT
87236-01-000
SCREW
G11-08-12U (2)

GRN
(FROM ROOF)

SPLITTER
86756-01-000

GRN/GRN
(TO REAR
TV WALLPLATE)

DETAIL DA
(76C) (105)

CABLE ASM-COAX
87105-05-020
(YEL)

GRN
(FROM ROOF)

ADAPTER-CABLE TO CABLE
82134-01-000 (44X)

GRN
(TO REAR
TV WALLPLATE)

DETAIL DA
(W/O EXTERIOR
ENTERTAINMENT CENTER)

- (76C) ENTERTAINMENT CTR/EXT CASSETTE
- (45G) BED-TWINS
- (44X) BED-QUEEN SIDEWALL
- (265) CODES/STANDARDS-CSA/CMVSS
- (105) ENTERTAINMENT CTR/EXT W/CD
- (105) CODES/STANDARDS USA
- (058) EUROPEAN EXPORT PREP-PARTIAL

FOR ELECTRICAL
TORQUE
SPECIFICATIONS
SEE DWG NO.
128783-01-000

00 F26P (105) (265)
TITLE: WIRING INSTL-BODY, 12V(COAX)
SHEET 4 OF 5

(3) WIRES ROUTED IN ROOF.

(2) WIRES ROUTED IN SIDEWALL.

1. CLAMP CABLES WITH CLAMP 10495-02-000 AND SCREW G11-08-12B EVERY 600.

NOTES:

A

B

C

D

E

F

G

H

8

7

6

5

4

3

2

1

