



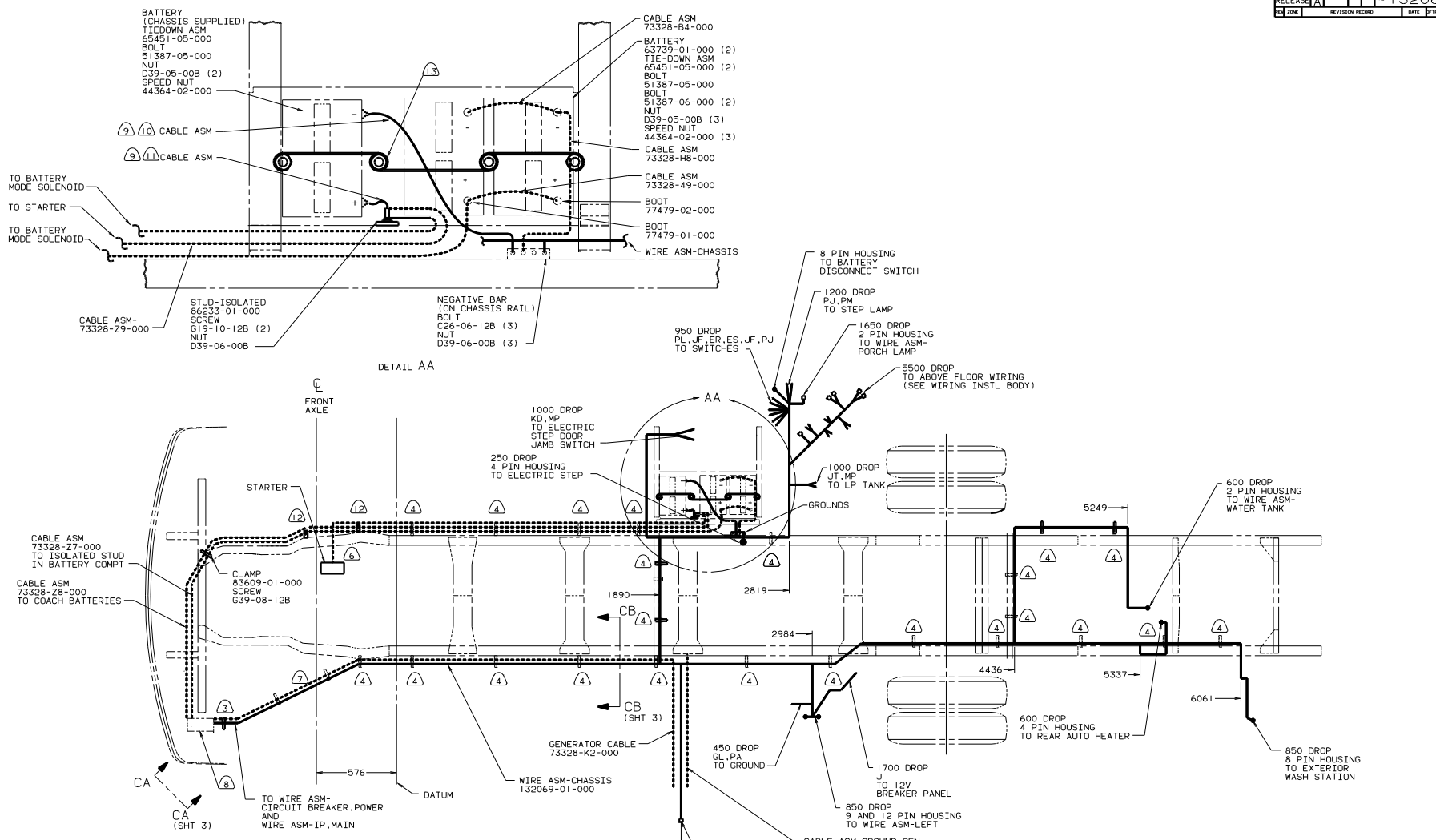
**DANGER**

**Danger of electrical shock, burns or death.** Always remove all power sources before attempting any repair, service or diagnostic work. Power can be present from shore power, generator, inverter or battery. All power sources must be disabled and secured before performing any service.



**CAUTION**

If you lack the skills, tools or equipment to perform diagnostic or repair work leave such work to an authorized Winnebago Industries dealer or other qualified shop.



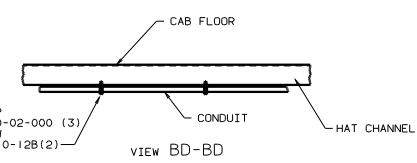
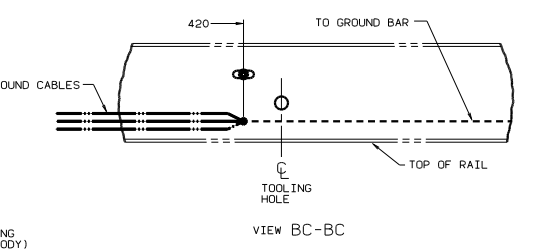
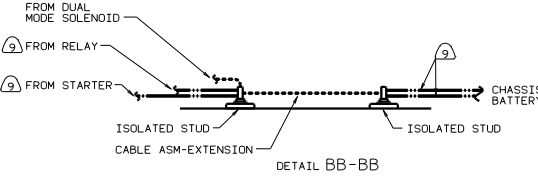
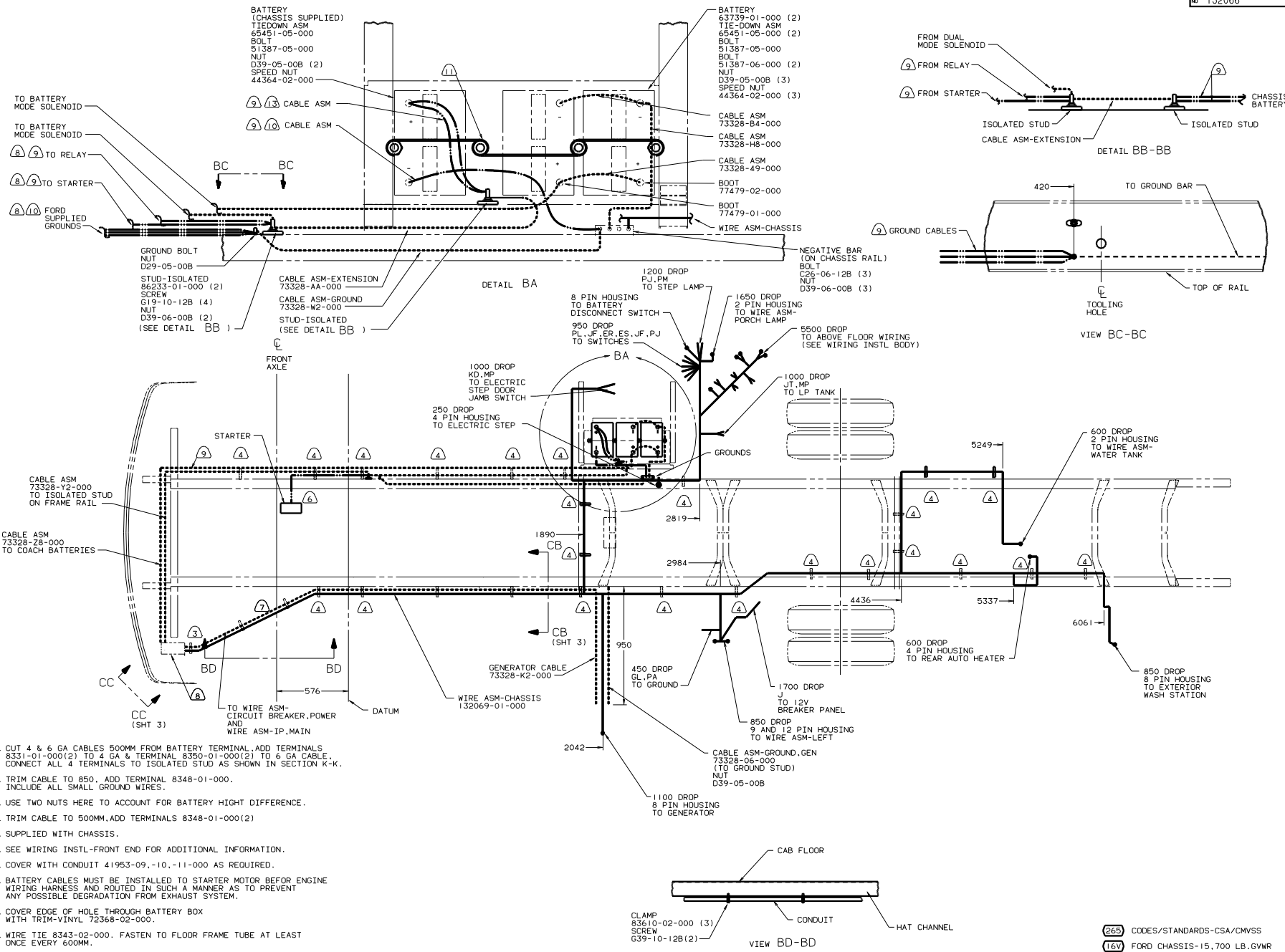
DETAIL AA

- ⑬ USE TWO NUTS HERE TO ACCOUNT FOR BATTERY HEIGHT DIFFERENCE.
  - ⑫ WIRE TIE 116673-01-000.
  - ⑪ TRIM CABLE TO 400MM, ADD TERMINAL 8348-01-000.
  - ⑩ TRIM CABLE TO 800MM, ADD TERMINAL 8348-01-000.
  - ⑨ SUPPLIED WITH CHASSIS.
  - ⑧ SEE WIRING INSTL-FRONT END FOR ADDITIONAL INFORMATION.
  - ⑦ COVER WITH CONDUIT 41953-09,-10,-11-000 AS REQUIRED.
  - ⑥ BATTERY CABLES MUST BE INSTALLED TO STARTER MOTOR BEFORE ENGINE WIRING HARNESS AND ROUTED IN SUCH A MANNER AS TO PREVENT ANY POSSIBLE DEGRADATION FROM EXHAUST SYSTEM.
  - ⑤ COVER EDGE OF HOLE THROUGH BATTERY BOX WITH TRIM-VINYL 72368-02-000.
  - ④ WIRE TIE 8343-02-000. FASTEN TO FLOOR FRAME TUBE AT LEAST ONCE EVERY 600MM.
  - ③ CLAMP 83610-01-000, SCREW G11-10-16B.
2. SECURE CONDUIT 41953-01,-02,-03 OVER ALL WIRES IN CONTACT WITH SHARP EDGES.
1. LEGEND: — WINNEBAGO, - - - - - CABLE, - - - - - CHASSIS SUPPLIED WIRING.

- ②65 CODES/STANDARDS-CSA/CMVSS
- ①C0 CHEVY CHASSIS 14,800 LB. GVWR
- ①B1 CODES/STANDARDS USA

FOR ELECTRICAL TORQUE SPECIFICATIONS SEE DWG NO 128783-01-000

OF IN		DATE	UNSPECIFIED TOLERANCES ARE:	MATERIAL
CHP	DATE	WHOLE OR 1/16"	± 0.15	
PIE	DATE	ONE-PLACE (1/32)"	± 0.15	
D/E	DATE	TWO-PLACE (1/64)"	± 0.15	
CONP	DATE	THIRD PLACE (1/128)"	± 0.15	
LANE	DATE	FOURTH PLACE (1/256)"	± 0.15	
TITLE: <b>WIRING INSTL-CHASSIS</b> SHEET 1 OF 3 REF: 129559-C 1 132066				



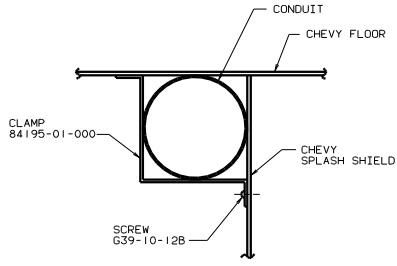
- ⑬ CUT 4 & 6 GA CABLES 500MM FROM BATTERY TERMINAL, ADD TERMINALS 8331-01-000(2) TO 4 GA & TERMINAL 8350-01-000(2) TO 6 GA CABLE, CONNECT ALL 4 TERMINALS TO ISOLATED STUD AS SHOWN IN SECTION K-K.
  - ⑫ TRIM CABLE TO 850, ADD TERMINAL 8348-01-000, INCLUDE ALL SMALL GROUND WIRES.
  - ⑪ USE TWO NUTS HERE TO ACCOUNT FOR BATTERY HIGHT DIFFERENCE.
  - ⑩ TRIM CABLE TO 500MM, ADD TERMINALS 8348-01-000(2)
  - ⑨ SUPPLIED WITH CHASSIS.
  - ⑧ SEE WIRING INSTL-FRONT END FOR ADDITIONAL INFORMATION.
  - ⑦ COVER WITH CONDUIT 41953-09,-10,-11-000 AS REQUIRED.
  - ⑥ BATTERY CABLES MUST BE INSTALLED TO STARTER MOTOR BEFOR ENGINE WIRING HARNESS AND ROUTED IN SUCH A MANNER AS TO PREVENT ANY POSSIBLE DEGRADATION FROM EXHAUST SYSTEM.
  - ⑤ COVER EDGE OF HOLE THROUGH BATTERY BOX WITH TRIM-VINYL 72368-02-000.
  - ④ WIRE TIE 8343-02-000, FASTEN TO FLOOR FRAME TUBE AT LEAST ONCE EVERY 600MM.
  - ③ CLAMP 83610-01-000, SCREW 611-10-16B.
2. SECURE CONDUIT 41953-01,-02,-03 OVER ALL WIRES IN CONTACT WITH SHARP EDGES.
1. LEGEND: — WINNEBAGO, - - - - - CABLE, - - - - - CHASSIS SUPPLIED WIRING.

FOR ELECTRICAL TORQUE SPECIFICATIONS SEE DWG NO. 126783-01-000

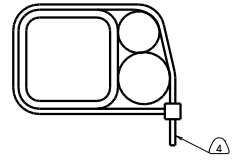
②65 CODES/STANDARDS-CSA/CMVSS  
①6V FORD CHASSIS-15.700 LB.GWVR  
①B1 CODES/STANDARDS USA

TITLE: WIRING INSTL-CHASSIS  
SHEET 2 OF 3  
132066

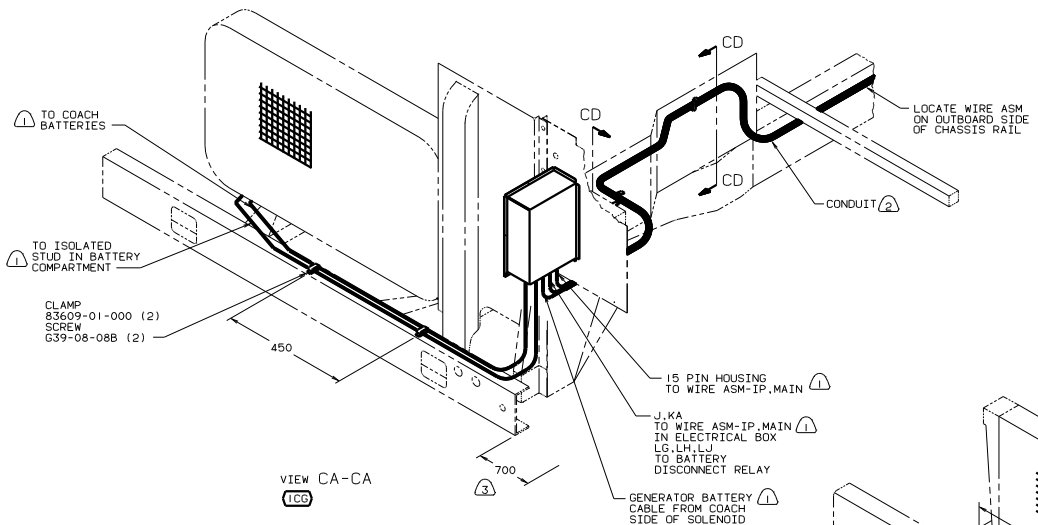
00 F29A



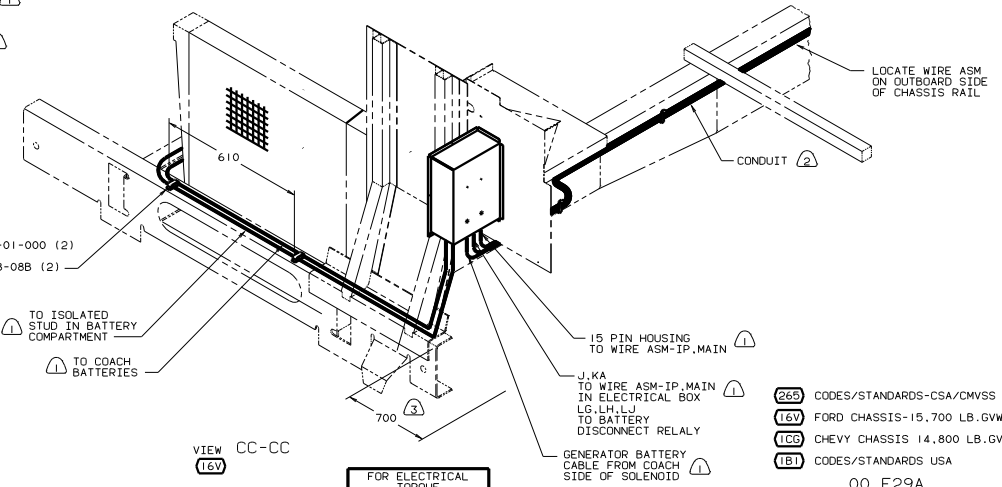
VIEW CD-CD  
(2 PLACES)



VIEW CB-CB



VIEW CA-CA  
(1C6)



VIEW CC-CC  
(16V)

- NOTES:
- ④ CUT OFF EXCESS END OF WIRE TIE.
  - ③ LAY BATTERY CABLES TO THIS DIMENSION FROM END OF CHASSIS CROSSMEMBER TO START INSTALLATION.
  - ② COVER WITH CONDUIT 41953-09,-10,-11-000 AS REQUIRED.
  - ① SEE WIRING INSTL-FRONT END FOR ADDITIONAL INFORMATION.

FOR ELECTRICAL TORQUE SPECIFICATIONS SEE DWG NO. 128783-01-000

(26B)	CODES/STANDARDS-CSA/CMVSS
(16V)	FORD CHASSIS-15,700 LB.GVWR
(1C6)	CHEVY CHASSIS 14,800 LB.GVWR
(1B1)	CODES/STANDARDS USA

00 F29A