



**DANGER**

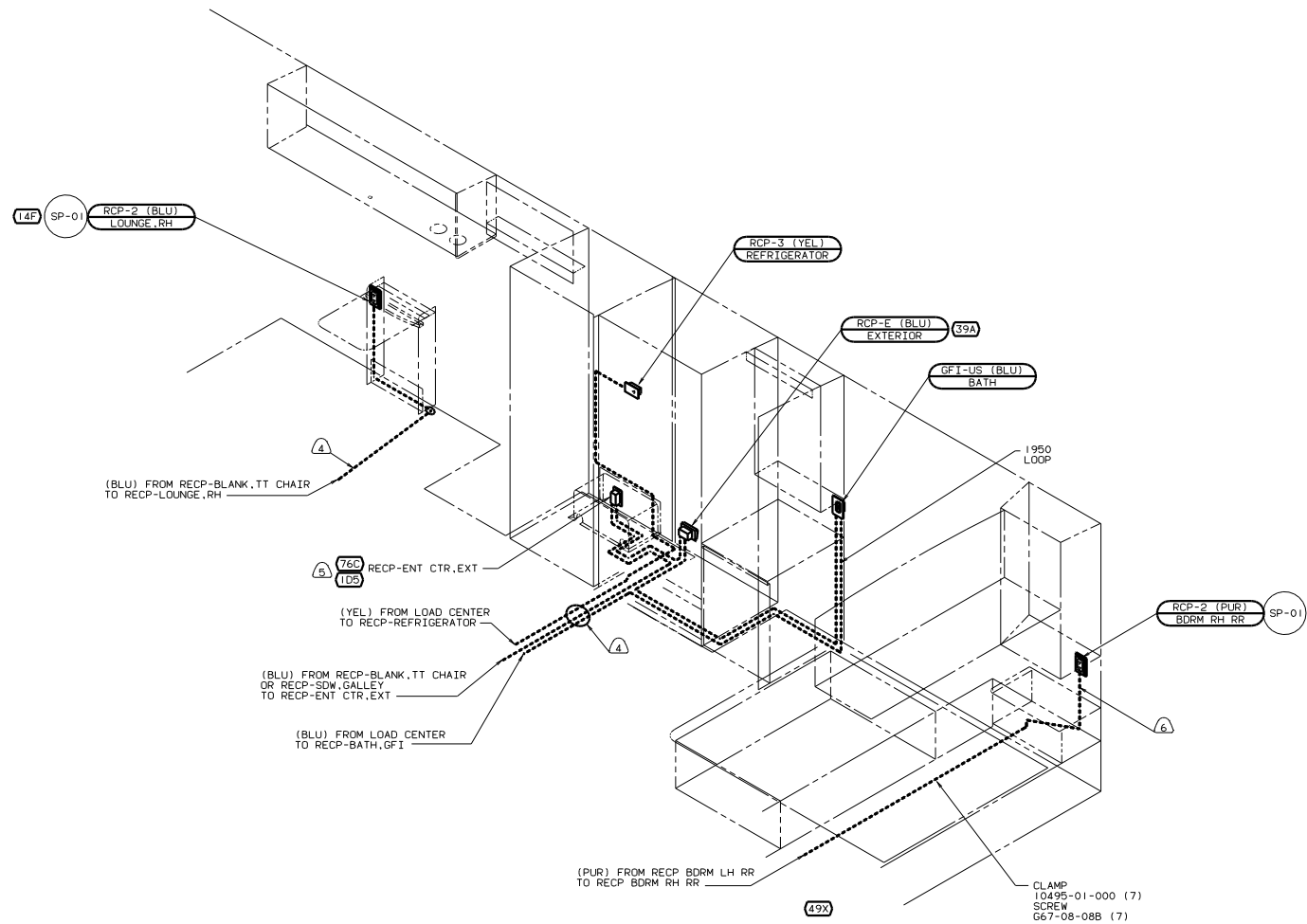
**Danger of electrical shock, burns or death.** Always remove all power sources before attempting any repair, service or diagnostic work. Power can be present from shore power, generator, inverter or battery. All power sources must be disabled and secured before performing any service.



**CAUTION**

If you lack the skills, tools or equipment to perform diagnostic or repair work leave such work to an authorized Winnebago Industries dealer or other qualified shop.





- (6) ROUTE WIRE THRU SIDEWALL.
  - (5) SEE ENTERTAINMENT CENTER COMP. FOR ADDITIONAL INFORMATION.
  - (4) ROUTE WIRE THRU FLOOR.
3. ALL GROUND WIRES TO BE COVERED WITH TUBING 8041-02-000.
  2. ALL WIRES ARE TO BE CLAMPED WITH CLAMP 10495-05-000 WITHIN 200 OF OUTLET BOXES AND SPLICES. USE SCREW G67-10-12B.
  1. ALL WIRE TO BE CLAMPED WITH CLAMP 10495-01-000 OR CLIP 80734-02-000 EVERY 600. USE SCREW G67-10-12B UNLESS OTHERWISE SPECIFIED.

NOTES:

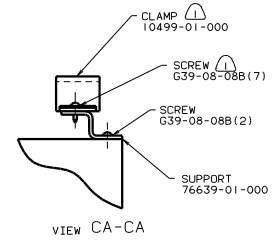
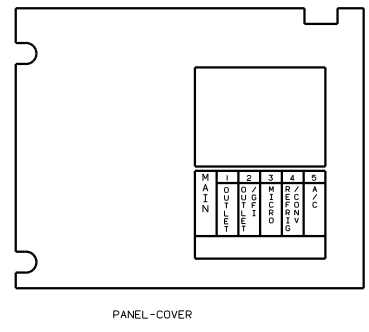
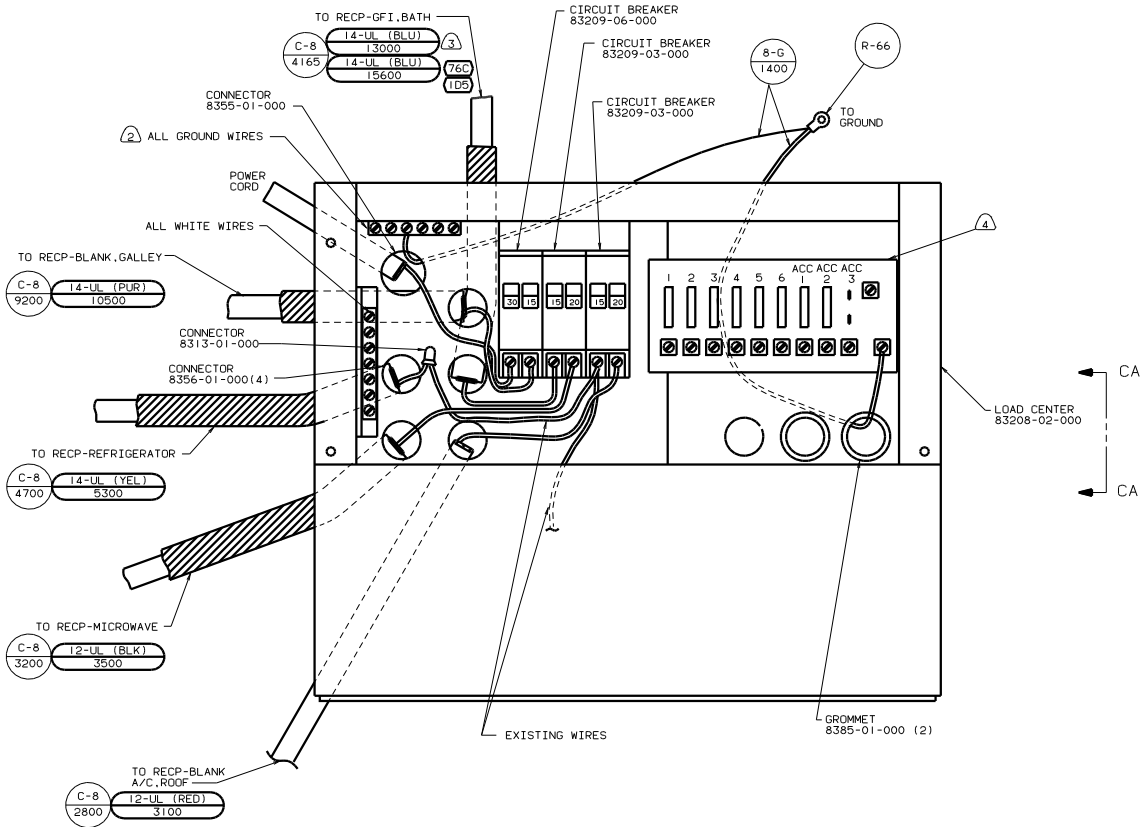
- (76C) ENTERTAINMENT CTR/EXT CASSETTE
- (39A) EXT RECEPTACLE DPLX 120VAC
- (14F) LOUNGE CHAIRS (2)-WITH TABLE
- (120) ELECTRICAL SYSTEM 30 AMP
- (1D5) ENTERTAINMENT CENTER/EXT W/CD
- (1B1) CODES/STANDARDS USA

FOR ELECTRICAL TORQUE SPECIFICATIONS SEE DWG NO. 128783-01-000

FOR ELECTRICAL CALLOUTS SEE DWG NO. 121339-01-000

00 F29A (1B1) (120)

WIRING INSTL - BODY, 110V (R30US)  
 SHEET 2 OF 7  
 132065



- NOTES:
- ④ SEE WIRING INSTL-BODY, 12V FOR ADDITIONAL INFORMATION.
  - ③ NOT USED WITH 76C OR 1D5
  - ② ALL GROUND WIRES TO BE COVERED WITH TUBING 8041-02-000.
  - ① FASTEN ALL WIRES TO SUPPORT, USE WITH ONE SCREW PER CLAMP.

- 76C ENTERTAINMNT CTR/EXT CASSETTE
- 12D ELECTRICAL SYSTEM 30 AMP
- 1D5 ENTERTAINMENT CENTR/EXT W/CD
- 1B1 CODES/STANDARDS USA

FOR ELECTRICAL TORQUE SPECIFICATIONS SEE DWG NO. 128783-01-000

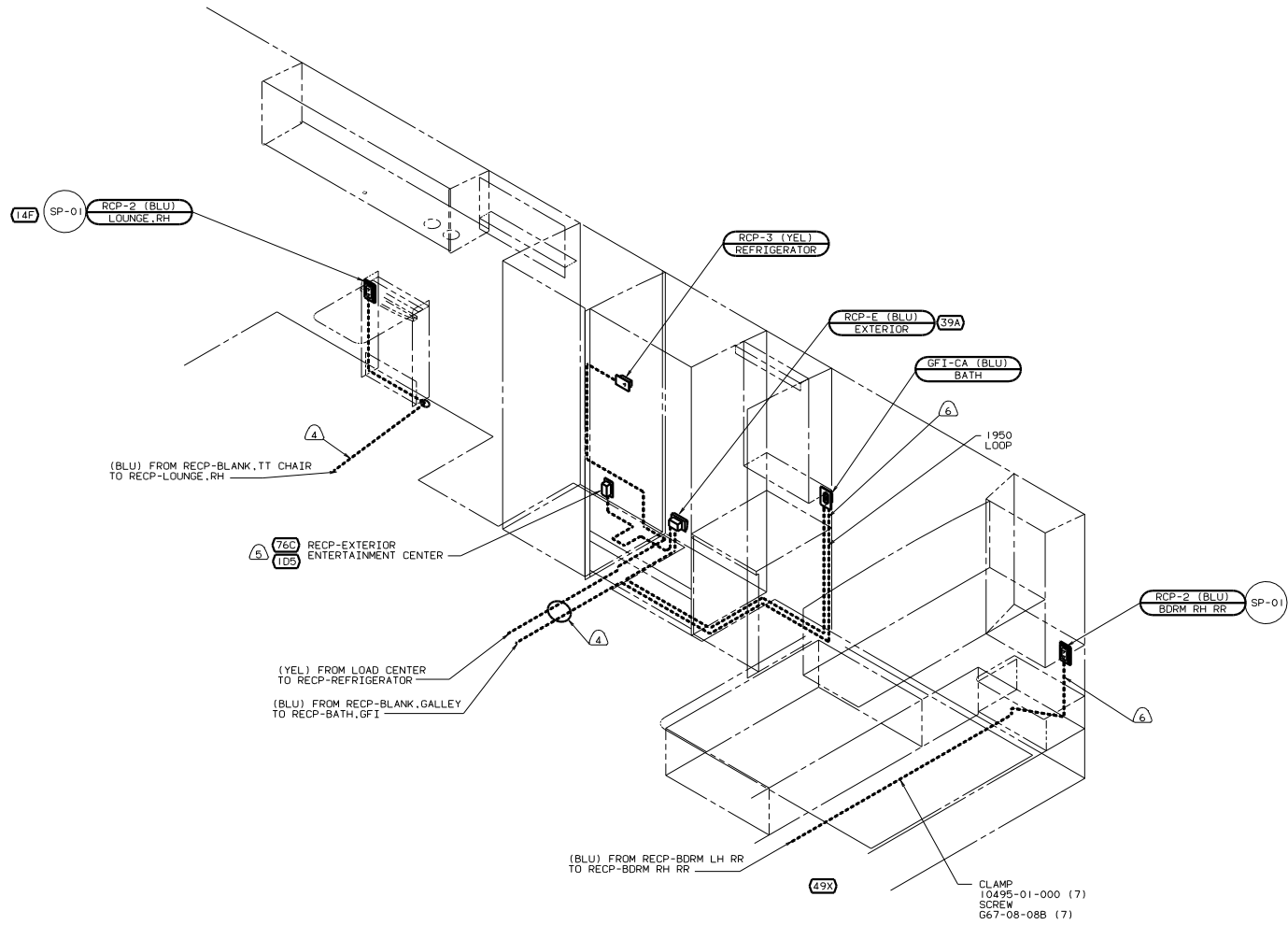
X-X

FOR ELECTRICAL CALLOUTS SEE DWG NO. 121339-01-000

00 F29A 1B1 12D

FILE NO.	WIRING INSTL-BODY, 110V(AC US)
DATE	12/16/00
SHEET	3 OF 7
FIG. NO.	132065





- 6. ROUTE WIRE THRU SIDEWALL.
  - 5. SEE ENTERTAINMENT CENTER COMP FOR ADDITIONAL INFORMATION.
  - 4. ROUTE WIRE THRU FLOOR.
3. ALL GROUND WIRES TO BE COVERED WITH TUBING 8041-02-000.
  2. ALL WIRES ARE TO BE CLAMPED WITH CLAMP 10497-05-000 WITHIN 200 OF OUTLET BOXES AND SPLICES. USE SCREW G67-10-12B.
  1. ALL WIRE TO BE CLAMPED WITH CLAMP 10495-01-000 OR CLIP 80734-02-000 EVERY 600. USE SCREW G67-10-12B UNLESS OTHERWISE SPECIFIED.

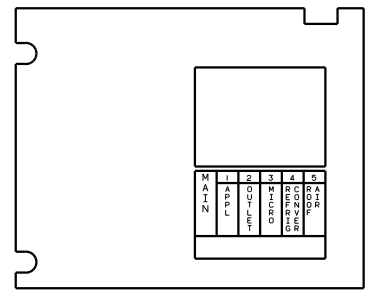
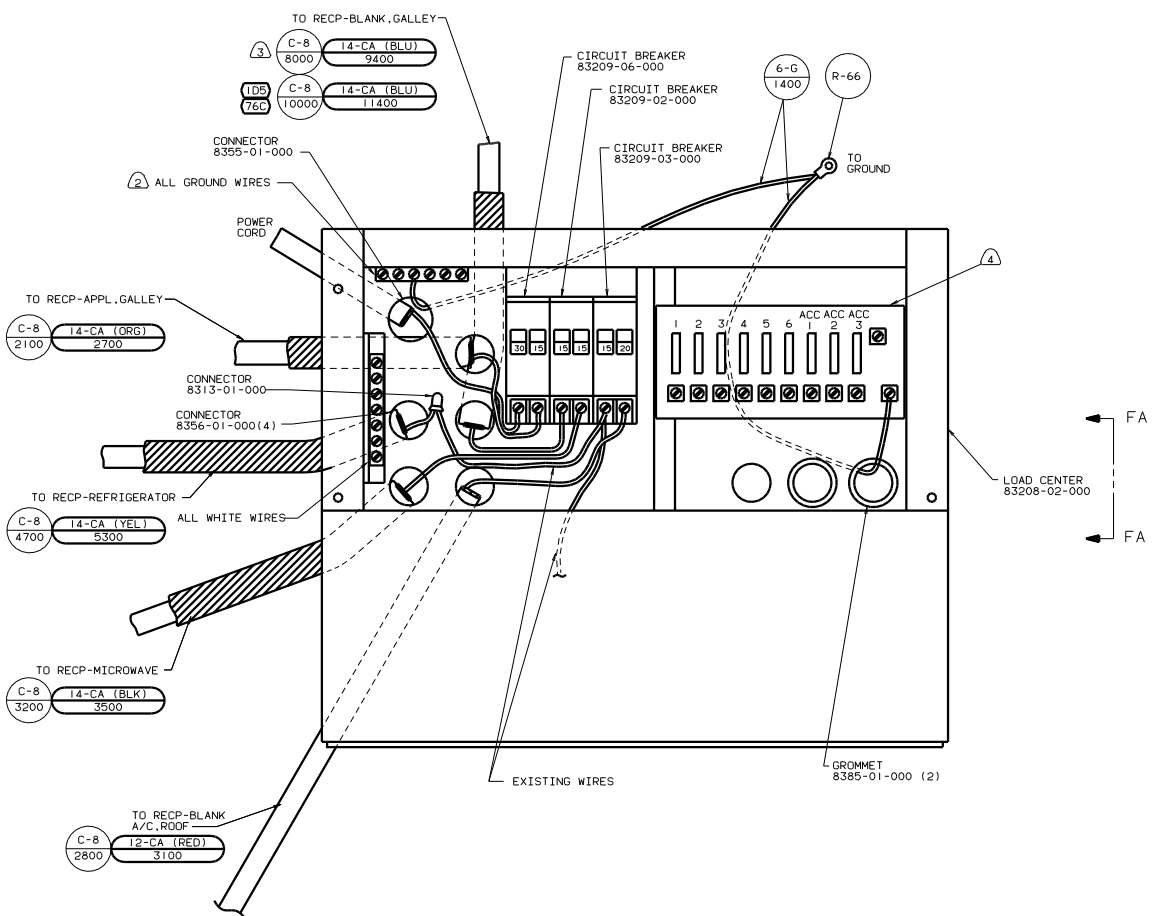
- 76C ENTERTAINMT CTR/EXT CASSETTE
- 49X BED-QUEEN - BACKWALL
- 39A EXT RECEPTACLE DPLX 120VAC
- 265 CODES/STANDARDS-CSA/CMVSS
- 14F LOUNGE CHAIRS (2)-WITH TABLE
- 120 ELECTRICAL SYSTEM 30 AMP
- 105 ENTERTAINMENT CNTR/EXT W/CD

FOR ELECTRICAL TORQUE SPECIFICATIONS SEE DWG NO. 128783-01-000

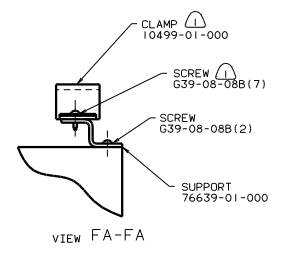
FOR ELECTRICAL CALLOUTS SEE DWG NO. 121339-01-000

00 F29A (265) (120)

WIRING INSTL-BODY, 110V(R30CAN)  
 SHEET 5 OF 7  
 132065



FA  
 FA



- NOTES:
- ④ SEE WIRING INSTL-BODY, 12V FOR ADDITIONAL INFORMATION.
  - ③ NOTE USED WITH 76C OR 1D5
  - ② ALL GROUND WIRES TO BE COVERED WITH TUBING 8041-02-000.
  - ① FASTEN ALL WIRES TO SUPPORT, USE WITH ONE SCREW PER CLAMP.

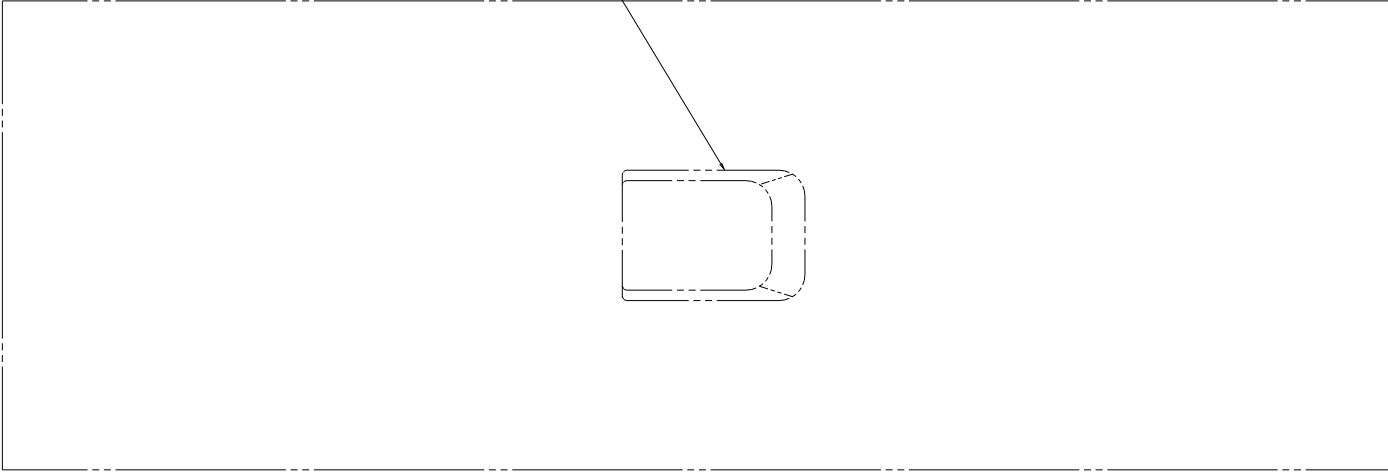
- 76C ENTERTAINMENT CTR/EXT CASSETTE
- 265 CODES/STANDARDS-CSA/CMVSS
- 12D ELECTRICAL SYSTEM 30 AMP
- 1D5 ENTERTAINMENT CENTR/EXT W/CD



FOR ELECTRICAL TORQUE SPECIFICATIONS SEE DWG NO. 128783-01-000


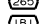

FOR ELECTRICAL CALLOUTS SEE DWG NO. 121339-01-000

WIRING INSTL-BODY, 110V(CCCAN)  
 SHEET 6 OF 7  
 132065








 AIR CONDITIONER  
 131188-01-CHT  
 (14800 BTU)  
 CEILING ASM  
 131184-01-CHT  
 BOARD DIVIDER  
 131184-02-CHT

-  A/C ROOF AIR (1) 14,800 BTU
-  CODES/STANDARDS-CSA/CMVSS
-  CODES/STANDARDS USA

FOR ELECTRICAL  
 TORQUE  
 SPECIFICATIONS  
 SEE DWG NO.  
 128783-01-000

TITLE: WIRING INSTL-BODY,110V(EX)  
 SHEET 7 of 7

 SEE WIRING INSTL-BODY.12V FOR ADDITIONAL INFORMATION.

