



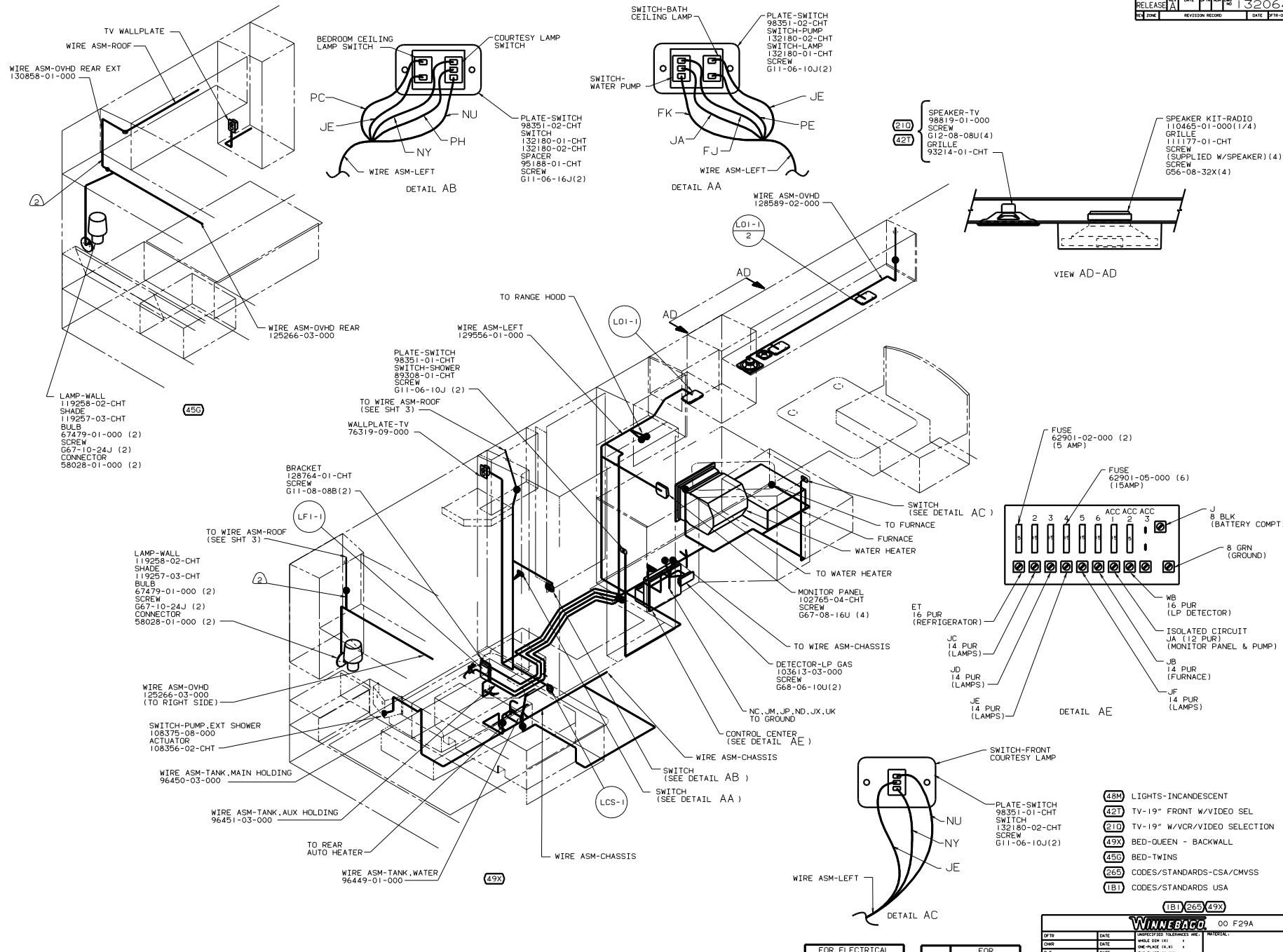
**DANGER**

**Danger of electrical shock, burns or death.** Always remove all power sources before attempting any repair, service or diagnostic work. Power can be present from shore power, generator, inverter or battery. All power sources must be disabled and secured before performing any service.



**CAUTION**

If you lack the skills, tools or equipment to perform diagnostic or repair work leave such work to an authorized Winnebago Industries dealer or other qualified shop.



(2) COVER WITH CONDUIT 41953-02-000 IN THIS AREA.

1. SECURE WIRES WITH CLAMP 83609-01-000 AND SCREW G11-08-12B EVERY 600.

NOTES:

FOR ELECTRICAL TORQUE SPECIFICATIONS SEE DWG NO. 128783-01-000

(X-X) FOR ELECTRICAL CALLOUTS SEE DWG NO. 121339-01-000

- (48M) LIGHTS-INCANDESCENT
- (42T) TV-19" FRONT W/VIDEO SEL
- (210) TV-19" W/VCR/VIDEO SELECTION
- (49X) BED-QUEEN - BACKWALL
- (45G) BED-TWINS
- (265) CODES/STANDARDS-CSA/CMVSS
- (1B1) CODES/STANDARDS USA

WINNEBAGO 00 F29A

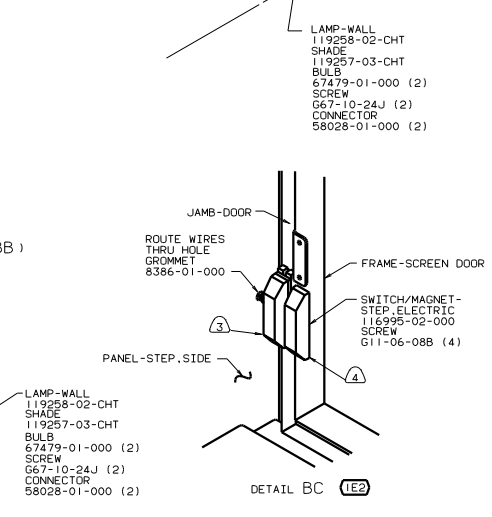
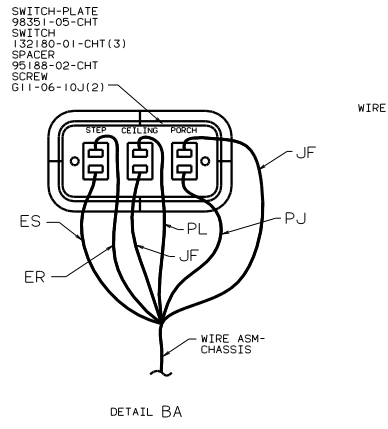
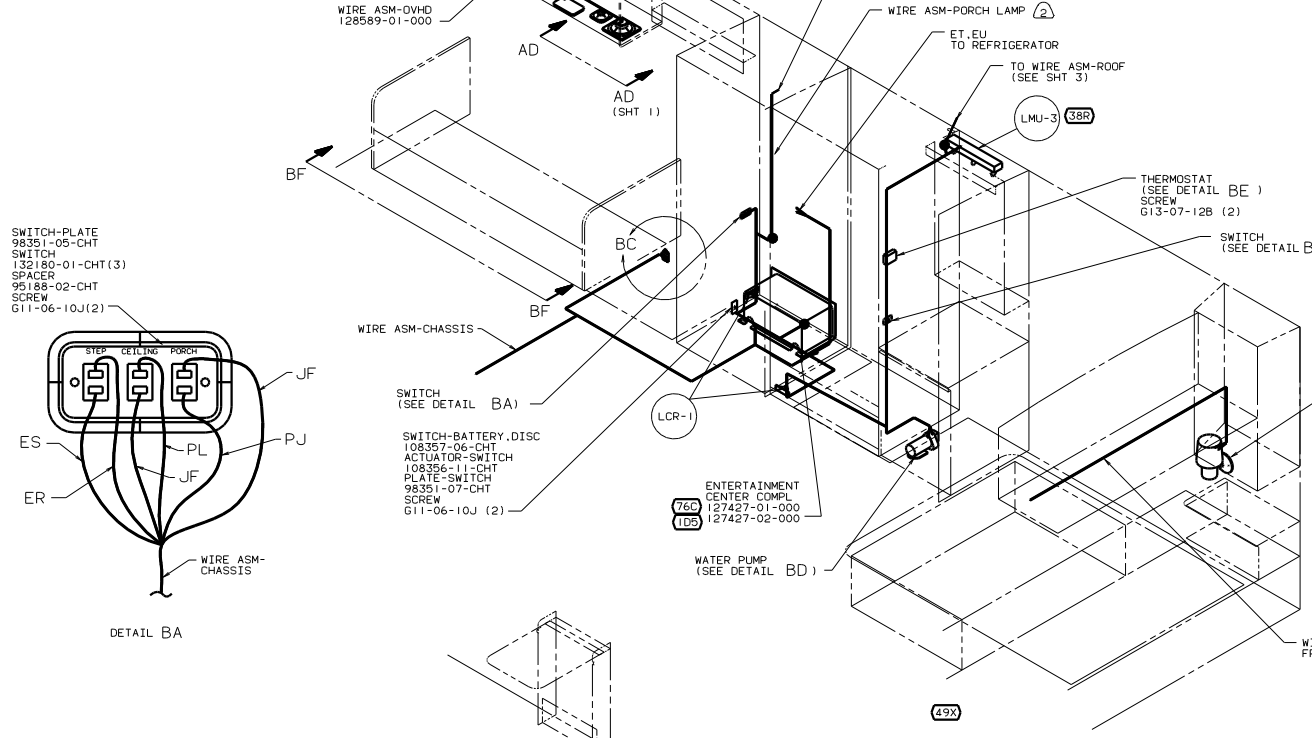
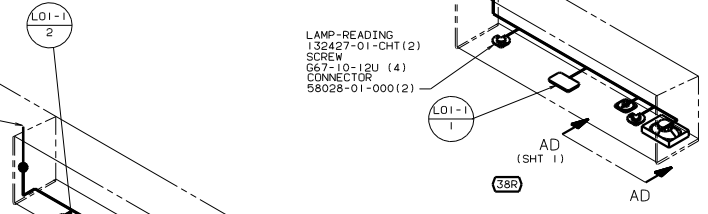
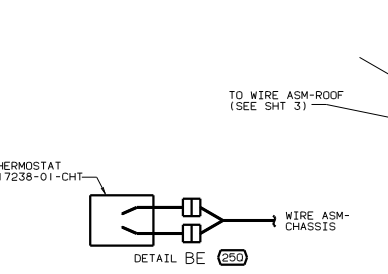
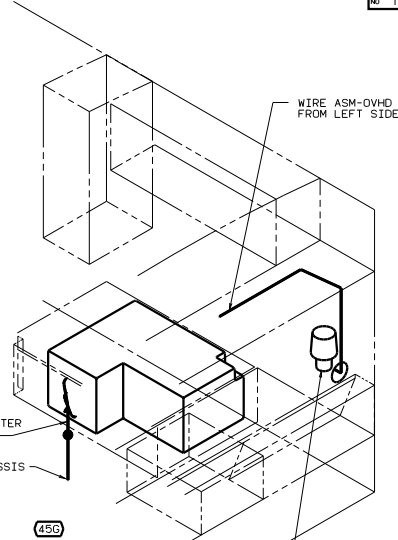
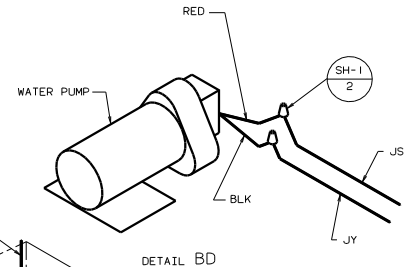
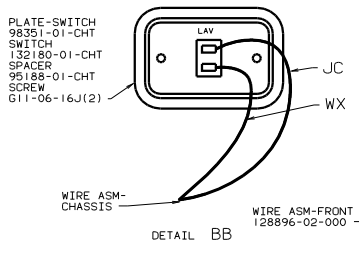
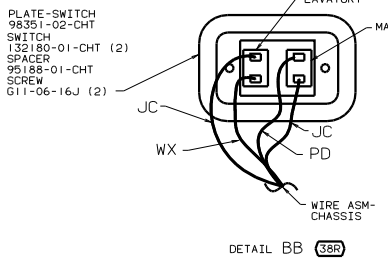
OF IN	DATE	UNSPECIFIED TOLERANCES ARE:	MATERIAL
CHP	DATE	WHOLE OR 1/16"	
DFE	DATE	ONE-PLACE (X.X)	
DFE	DATE	TWO-PLACE (X.XX)	
DFE	DATE	THREE-PLACE (X.XXX)	
DFE	DATE	FOUR-PLACE (X.XXXX)	
DFE	DATE	FIVE-PLACE (X.XXXX)	
DFE	DATE	SIX-PLACE (X.XXXX)	
DFE	DATE	SEVEN-PLACE (X.XXXX)	
DFE	DATE	EIGHT-PLACE (X.XXXX)	
DFE	DATE	NINE-PLACE (X.XXXX)	
DFE	DATE	TEN-PLACE (X.XXXX)	
DFE	DATE	ELEVEN-PLACE (X.XXXX)	
DFE	DATE	TWENTY-PLACE (X.XXXX)	

1. WIRING INSTL-BODY, 12V (LEFT)

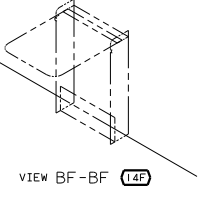
DATE: 11/11/13

BY: 19-010

132064



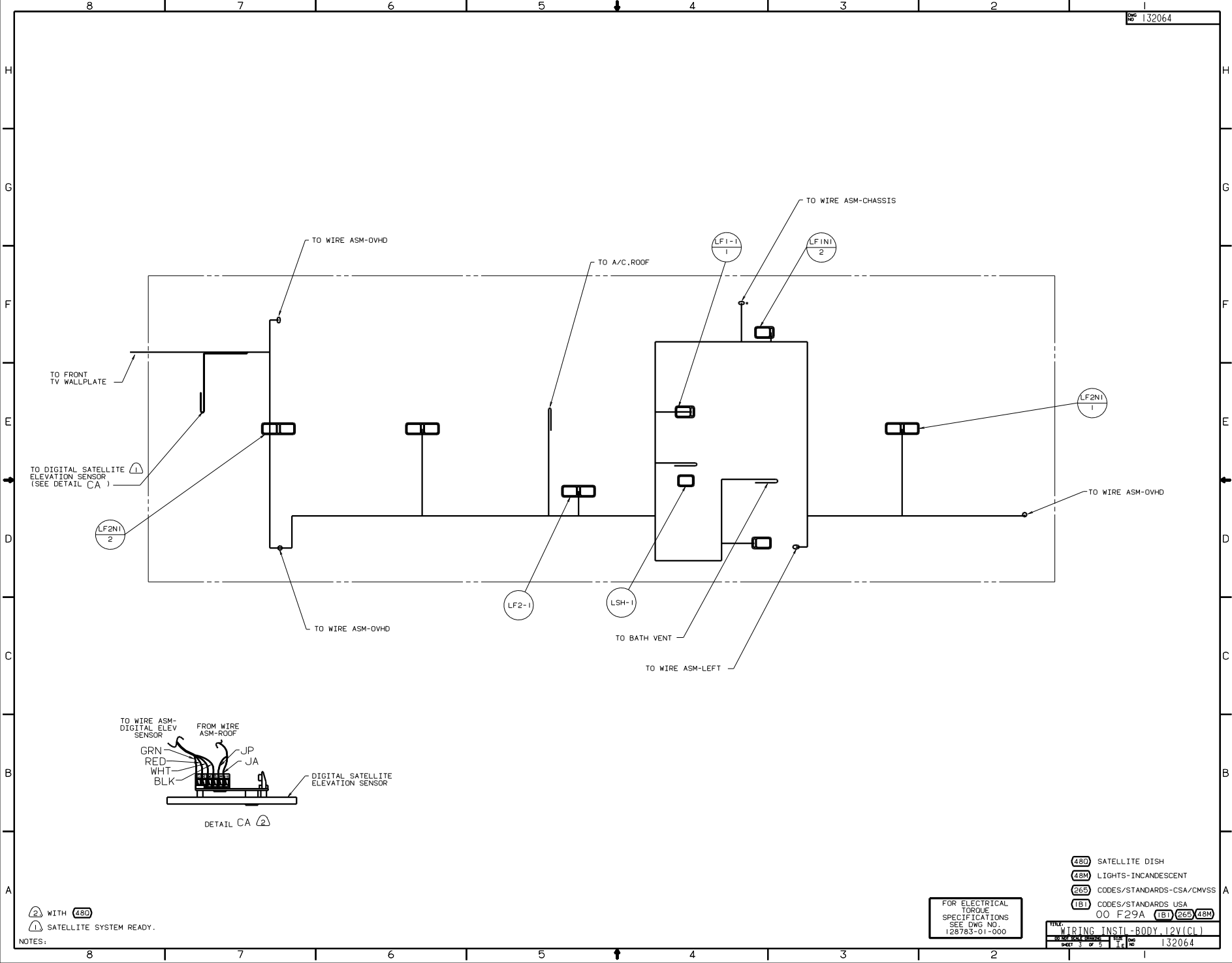
- ① MOUNT MAGNET USING PILOT HOLES IN SCREEN DOOR FRAME. MOUNT WITH MAGNET TOWARD SWITCH.
  - ② WIRE IN SIDEWALL
  - ③ MOUNT SWITCH AND SPACER TO BLOCK ON JAMB. ADJUST HEIGHT TO MATCH MAGNET.
- NOTES:  
1. SECURE WIRES WITH CLAMP 83609-01-000 AND SCREW G11-08-12B EVERY 600.



FOR ELECTRICAL TORQUE SPECIFICATIONS SEE DWG NO. 128783-01-000

FOR ELECTRICAL CALLOUTS SEE DWG NO. 121339-01-000

- (1E2) ENTRANCE STEP-ELEC.
- (76C) ENTERTAINMNT CTR/EXT CASSETTE
- (48M) LIGHTS-INCANDESCENT
- (49X) BED-QUEEN - BACKWALL
- (45B) BED-TWINS
- (38R) COMFORT & CONVENIENCE PKG
- (26S) CODES/STANDARDS-CSA/CMVSS
- (250) A/C ROOF AIR (1) 14.800 BTU
- (14F) LOUNGE CHAIRS (2)/WITH TABLE
- (131) COUCH RH
- (1D5) ENTERTAINMENT CENTER/W/CD
- (1B1) CODES/STANDARDS USA



TO FRONT TV WALLPLATE

TO DIGITAL SATELLITE ELEVATION SENSOR (SEE DETAIL CA)

LF2N1  
2

TO WIRE ASM-OVHD

TO A/C ROOF

TO WIRE ASM-CHASSIS

LF1-1  
1

LF1N1  
2

LF2N1  
1

TO WIRE ASM-OVHD

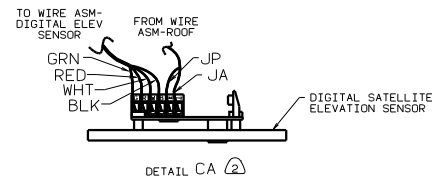
LF2-1

LSH-1

TO BATH VENT

TO WIRE ASM-LEFT

TO WIRE ASM-OVHD



NOTES:

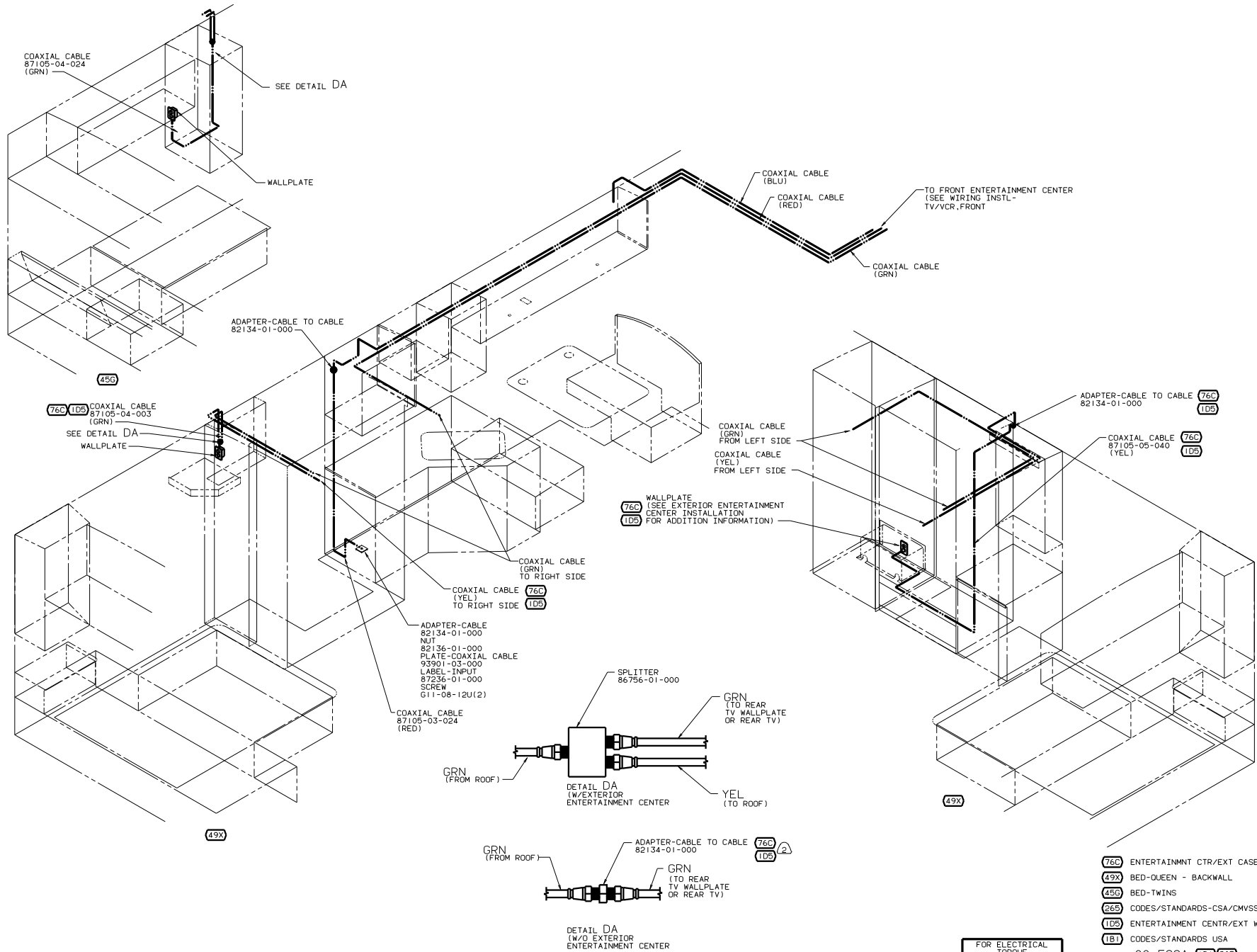
(2) WITH (480)

(1) SATELLITE SYSTEM READY.

FOR ELECTRICAL TORQUE SPECIFICATIONS SEE DWG NO. 128783-01-000

- (480) SATELLITE DISH
- (48M) LIGHTS-INCANDESCENT
- (265) CODES/STANDARDS-CSA/CMVSS
- (1B1) CODES/STANDARDS USA
- 00 F29A (1B1) (265) (48M)

TITLE		WIRING INSTL-BODY 12V(CL)	
DATE	BY	CHK	APP
1			
SHEET 3 OF 5		132064	



(2) CABLE FROM ROOF CONNECTS DIRECTLY TO WALLPLATE.

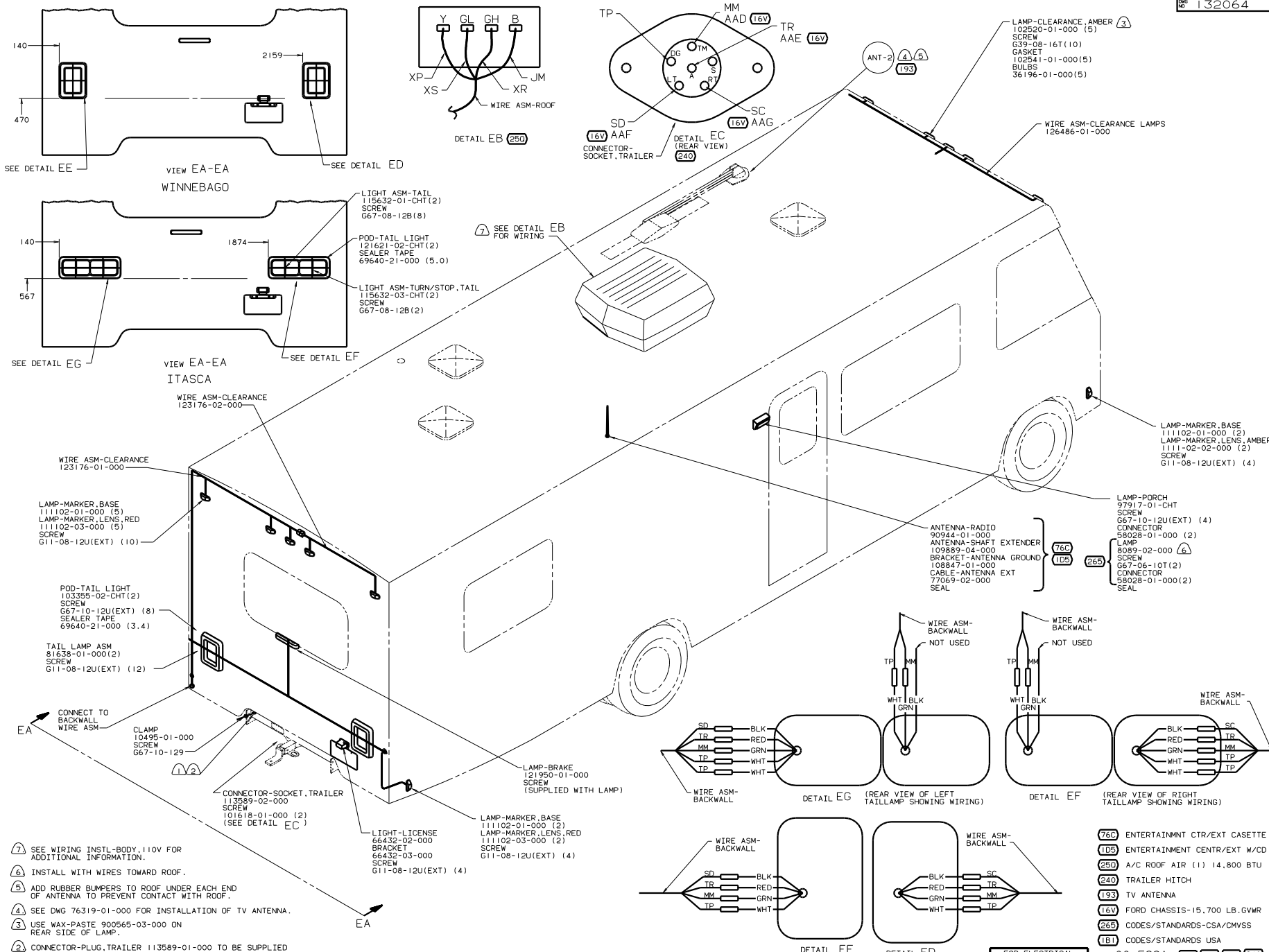
1. CLAMP CABLES WITH CLAMP 83609-01-000 AND SCREW G11-08-12B EVERY 600.

NOTES:

FOR ELECTRICAL TORQUE SPECIFICATIONS SEE DWG NO. 128783-01-000

- (76C) ENTERTAINMENT CTR/EXT CASSETTE
- (49X) BED-QUEEN - BACKWALL
- (45G) BED-TWINS
- (265) CODES/STANDARDS-CSA/CMVSS
- (1D5) ENTERTAINMENT CTR/EXT W/CD
- (1B1) CODES/STANDARDS USA

00 F29A (1B1) (265)



- ① TAPE BRANCH BACK ALONG WIRE ASM WITH TAPE 8363-01-000.
- ② CONNECTOR-PLUG, TRAILER 113589-01-000 TO BE SUPPLIED LOOSE IN COACH WITH TRAILER TOW PACKAGE.
- ③ USE WAX-PASTE 900565-03-000 ON REAR SIDE OF LAMP.
- ④ SEE DWG 76319-01-000 FOR INSTALLATION OF TV ANTENNA.
- ⑤ ADD RUBBER BUMPERS TO ROOF UNDER EACH END OF ANTENNA TO PREVENT CONTACT WITH ROOF.
- ⑥ INSTALL WITH WIRES TOWARD ROOF.
- ⑦ SEE WIRING INSTL-BODY, 110V FOR ADDITIONAL INFORMATION.

NOTES: