



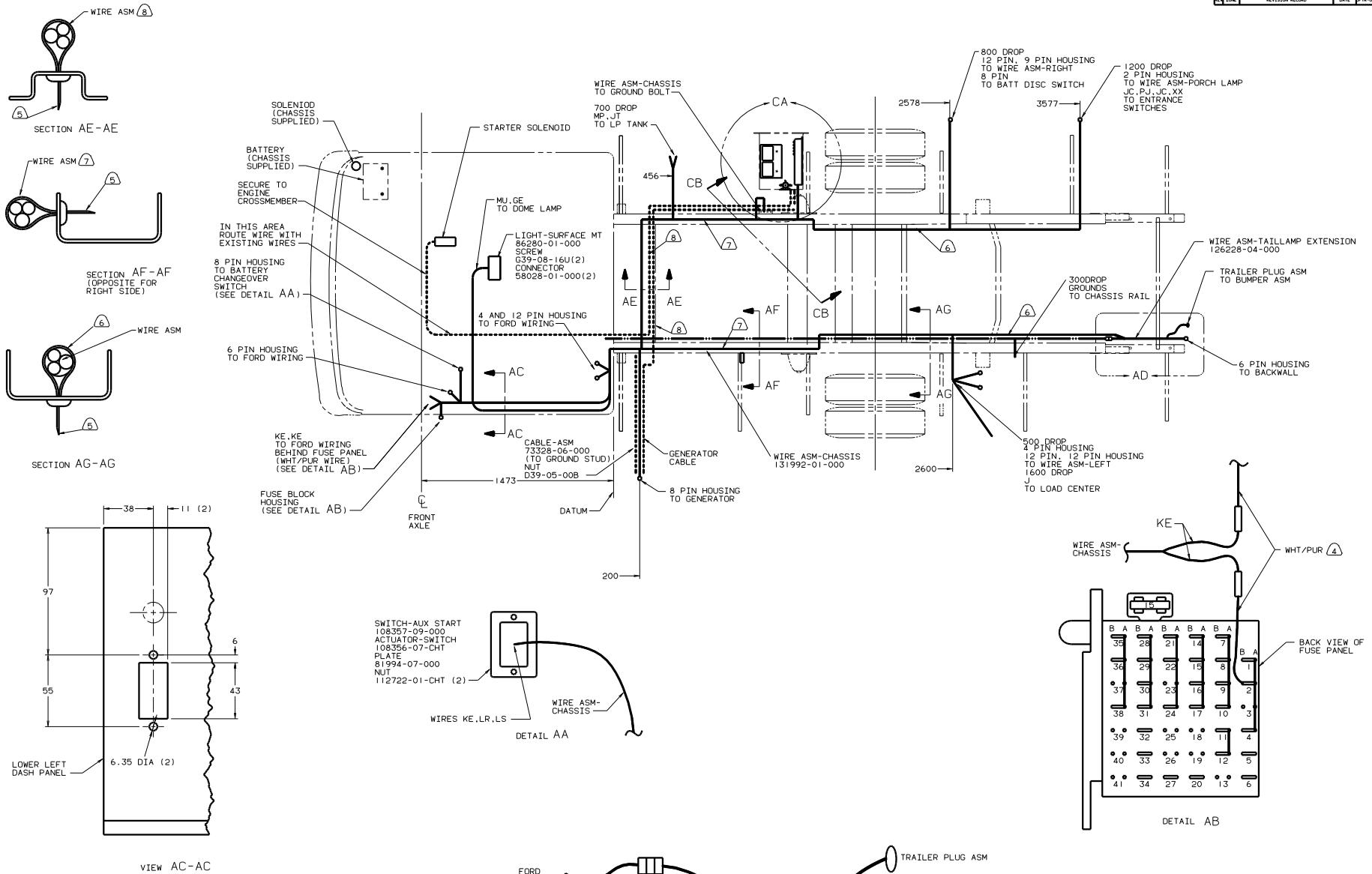
DANGER

Danger of electrical shock, burns or death. Always remove all power sources before attempting any repair, service or diagnostic work. Power can be present from shore power, generator, inverter or battery. All power sources must be disabled and secured before performing any service.



CAUTION

If you lack the skills, tools or equipment to perform diagnostic or repair work leave such work to an authorized Winnebago Industries dealer or other qualified shop.



- (8) WIRES TO BE TIED TO CROSSMEMBER USING EXISTING HOLES.
- (7) WIRES TO BE TIED ON TOP OF RAIL USING EXISTING HOLES.
- (6) WIRES TO BE TIED INSIDE OF RAIL USING EXISTING HOLES.
- (5) CUT OFF EXCESS END OF WIRE TIE.
- (4) CUT WIRE AND RECONNECT AS SHOWN.
3. USE WITH TIES 8343-02-000 AND 116673-01-000 APPROXIMATELY 600MM ON CENTER UNLESS OTHERWISE SPECIFIED.
2. SECURE CONDUIT 41953-01-000 OVER ALL WIRE IN CONTACT WITH SHARP EDGES.
1. LEGEND: — WINNEBAGO, CABLE, — CHASSIS SUPPLIED WIRING.

265 CODES/STANDARDS-CSA/CMVSS

165 FORD CHASSIS 10,700 LB. GVWR

181 CODES/STANDARDS USA

FORD

00 322R

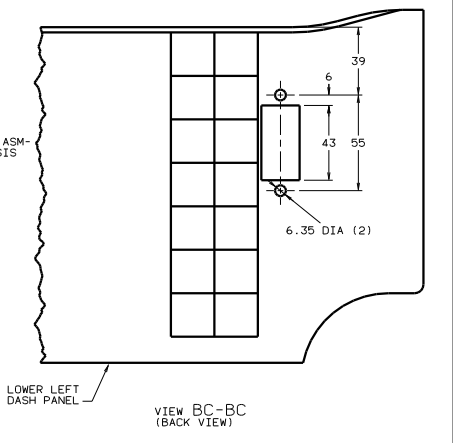
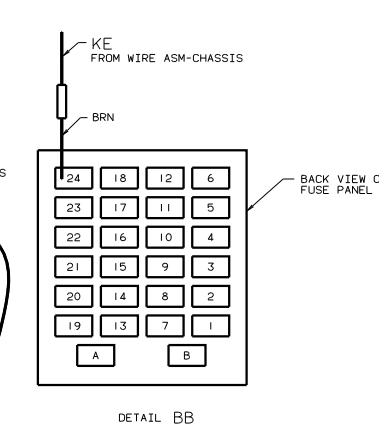
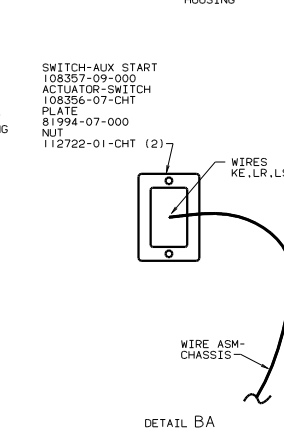
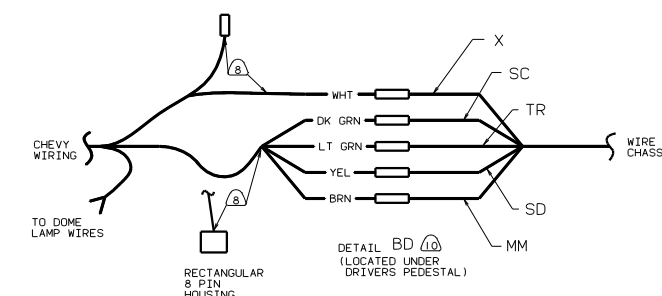
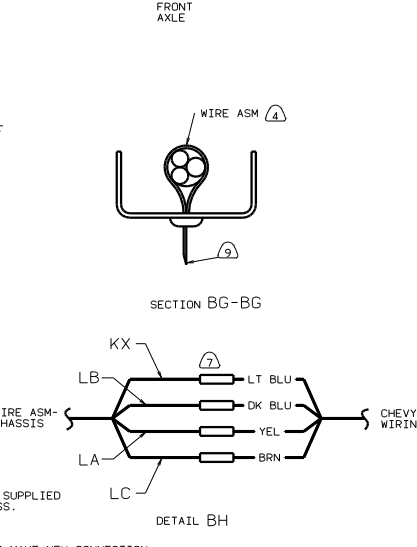
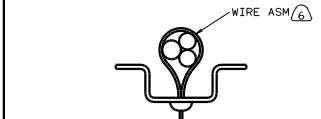
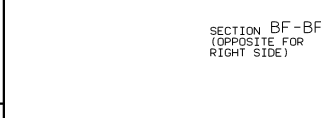
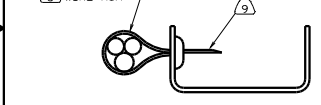
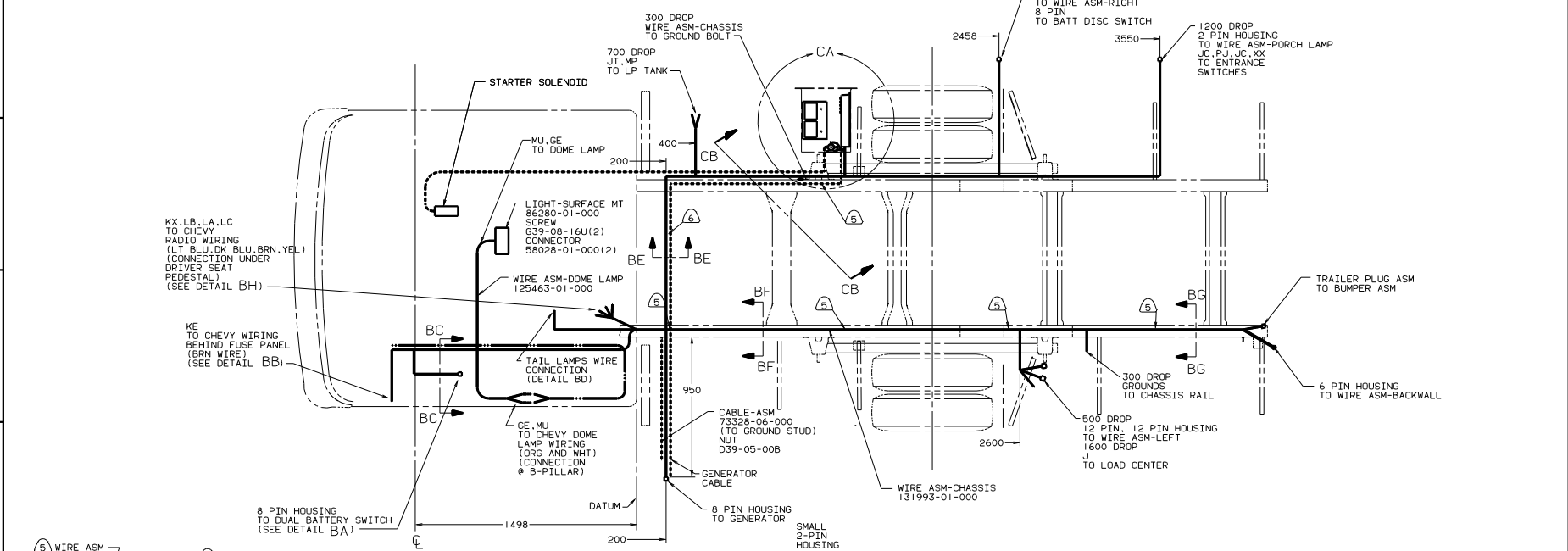
WINNEBAGO

OF IN	DATE	UNSPECIFIED TOLERANCES ARE:	MATERIAL
CHP	DATE	1/16" (1.6)	
PL	DATE	1/32" (0.8)	
PL	DATE	1/64" (0.4)	
CHP	DATE	1/16" (1.6)	
CHP	DATE	1/32" (0.8)	
CHP	DATE	1/64" (0.4)	

FOR ELECTRICAL TORQUE SPECIFICATIONS SEE DWG NO 128783-01-000

131987

REF: 130216-A



- NOTES:
- ① TAPE OVER THE ENDS OF UNUSED CHASSIS SUPPLIED WIRES, AND SECURE BACK TO MAIN HARNESS.
 - ② CUT OFF EXCESS END OF WIRE TIE.
 - ③ CUT AND REMOVE WIRES AT GM HOUSING TO MAKE NEW CONNECTION.
 - ④ CUT OFF CHEVY 6 PIN HOUSING AND RECONNECT AS SHOWN.
 - ⑤ WIRES TO BE TIED TO CROSS MEMBER USING EXISTING HOLES.
 - ⑥ WIRES TO BE TIED ON TOP OF RAIL USING EXISTING HOLES.
 - ⑦ WIRES TO BE TIED INSIDE OF RAIL USING EXISTING HOLES.

519 CAL EMISSION CHEVY

265 CODES/STANDARDS-CSA/CMVSS

1CW CHEVY CHASSIS 12,300 LB.GVWR

1BT CODES/STANDARDS USA

CHEVY 00 322R

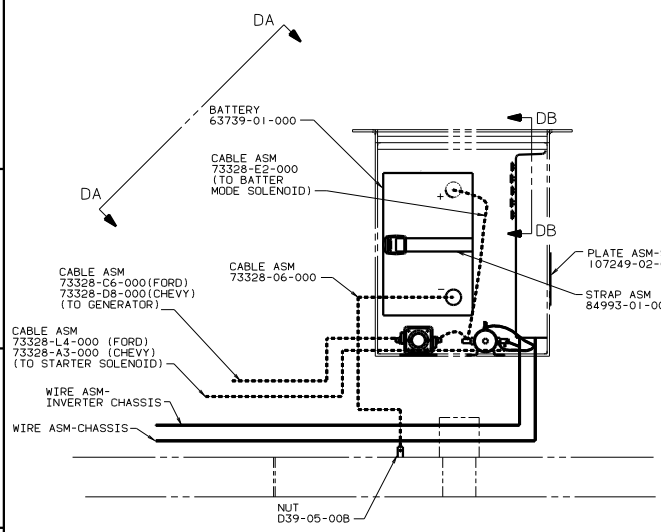
FOR ELECTRICAL TORQUE SPECIFICATIONS SEE DWG NO. 128783-01-000

TITLE: WIRING INSTL-CHASSIS

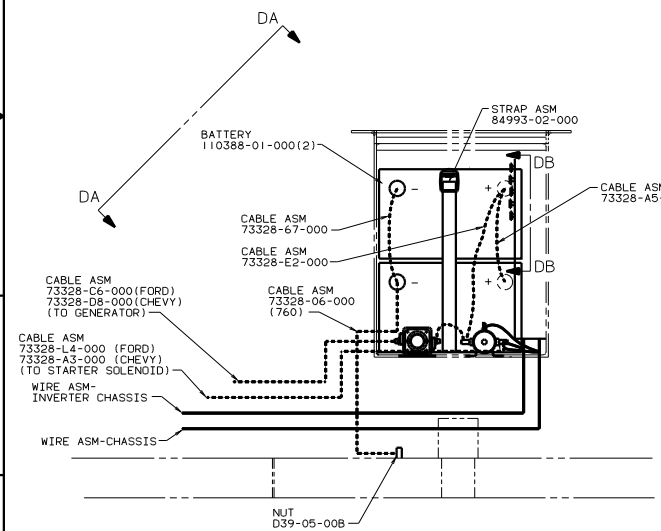
NO. OF SHEETS: 4 SHEET 2 OF 4

DATE: 1/16/87

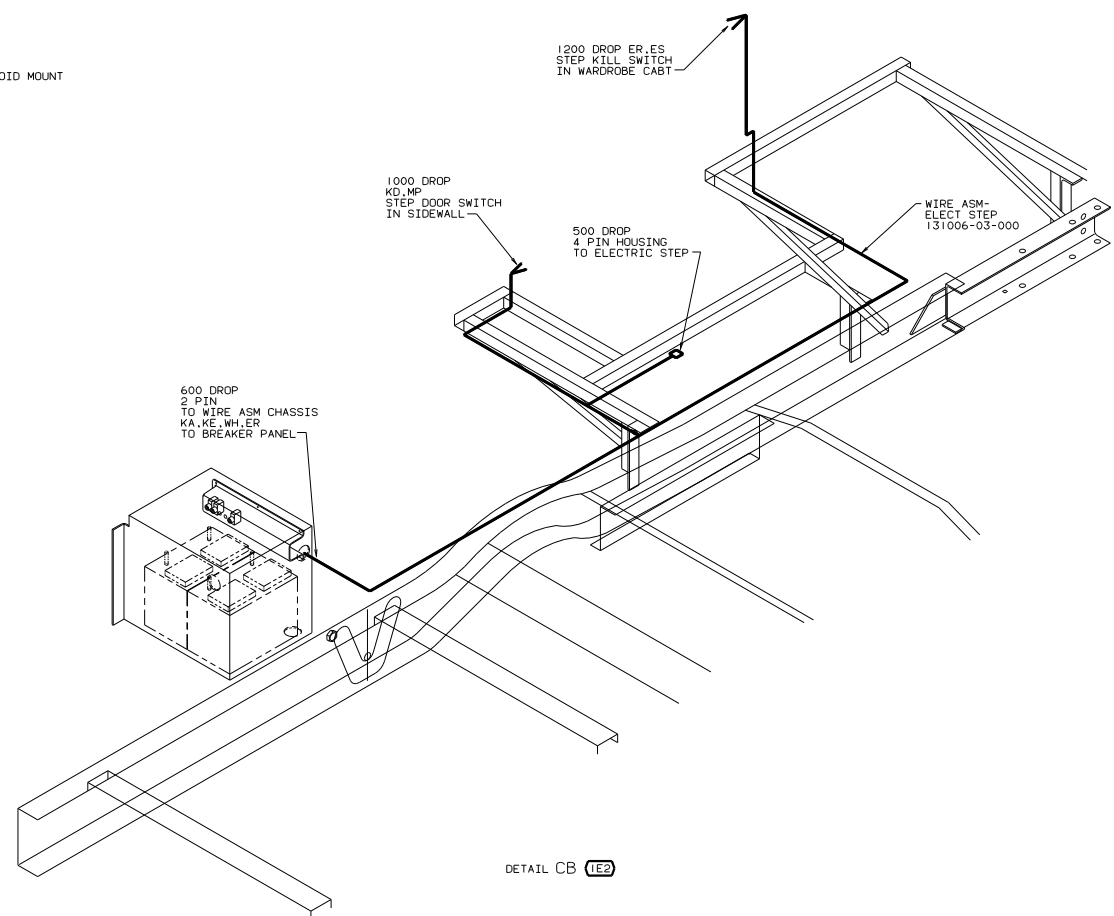
131987



DETAIL CA (12X)



DETAIL CA (22W)



DETAIL CB (1E2)

- ⑤ IE2 ENTRANCE STEP-ELECTRIC.
- ④ TRIM CABLE TO 800. ADD TERMINAL 8348-01-000.
- ③ ADD TERMINAL 8348-01-000.
- ② TRIM CABLE TO 700. ADD TERMINAL 8348-01-000.
- ① TRIM CABLE TO 600. ADD TERMINAL 8348-01-000.

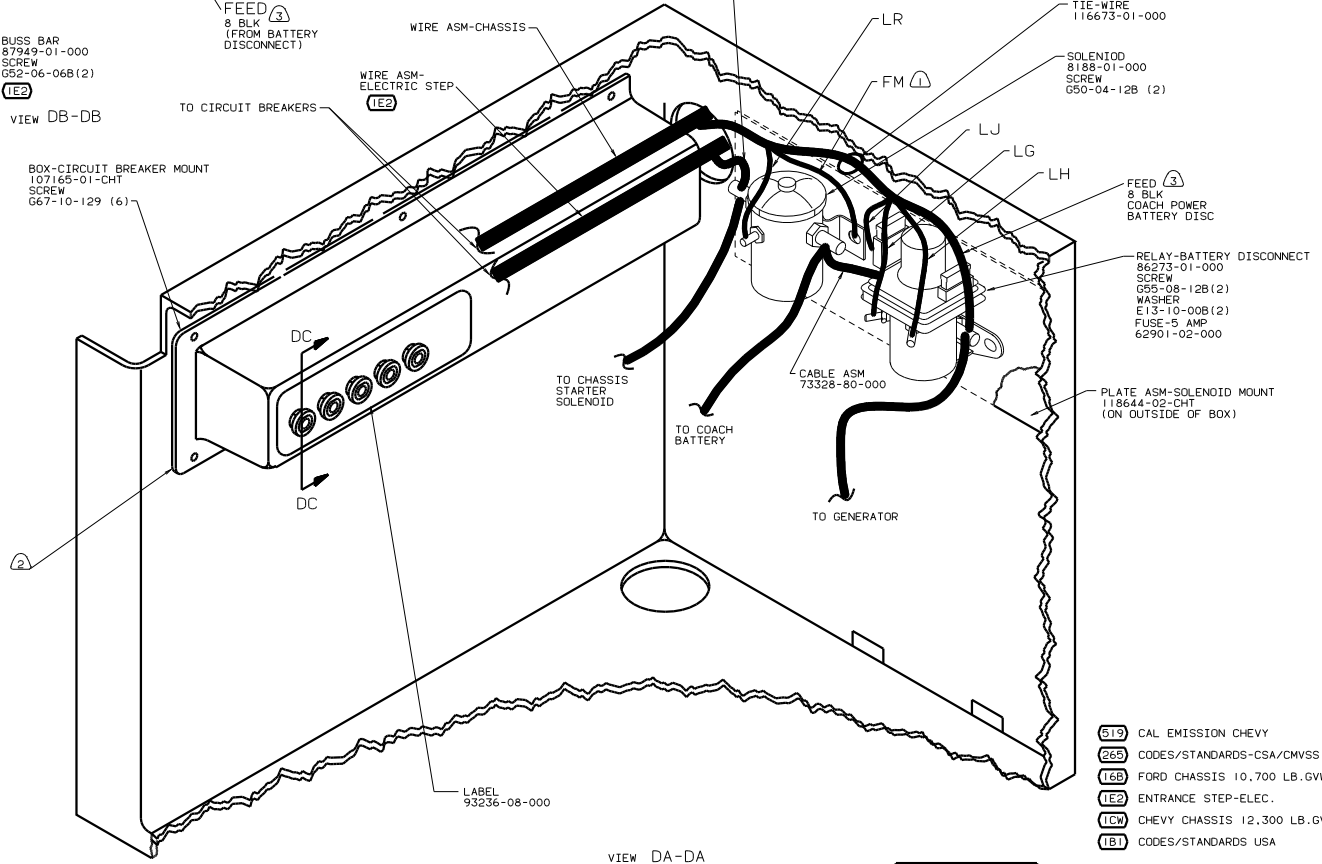
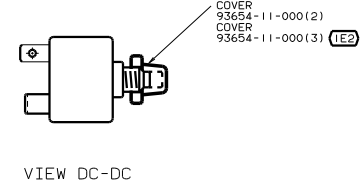
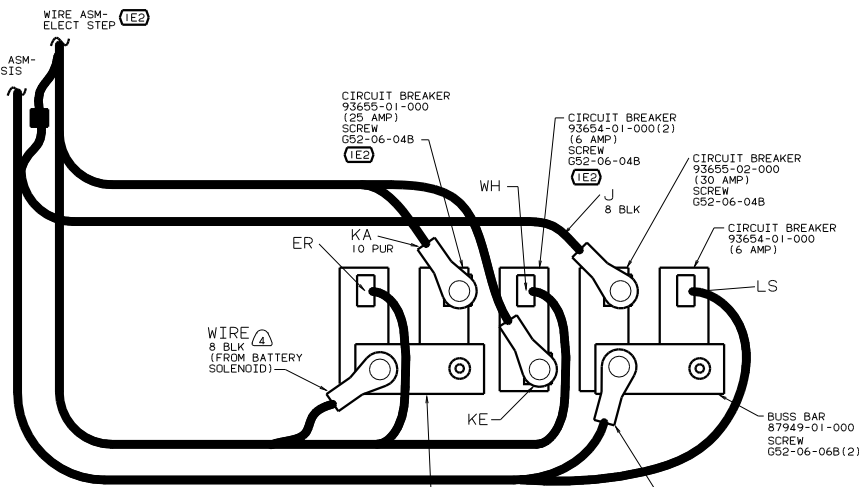
NOTES:

- (519) CAL EMISSION CHEVY
- (265) CODES/STANDARDS-CSA/CMVSS
- (22W) BATTERY-TWO
- (16B) FORD CHASSIS 10,700 LB.GVWR
- (12X) BATTERY-ONE
- (1E2) ENTRANCE STEP-ELEC.
- (1CW) CHEVY CHASSIS 12,300 LB.GVWR
- (1B1) CODES/STANDARDS USA

FOR ELECTRICAL
TOLERANCE
SPECIFICATIONS
SEE DWG NO.
128783-01-000

00 322R

TITLE: WIRING INSTL-CHASSIS	
30 100 SCALE 200%	16
SHEET 3 of 4	131987



- (4) LEAD MARKED WITH YELLOW TAPE.
- (3) LEAD MARKED WITH RED TAPE.
- (2) LOCATE BOX HORIZONTALLY BY CENTERING ON HOLE IN REAR OF COMPARTMENT.
- (1) SECURE WITH SOLENOID MOUNTING BOLT.

- (519) CAL EMISSION CHEVY
- (265) CODES/STANDARDS-CSA/CMVSS
- (IEB) FORD CHASSIS 10,700 LB.GVWR
- (IE2) ENTRANCE STEP-ELEC.
- (ICW) CHEVY CHASSIS 12,300 LB.GVWR
- (IB1) CODES/STANDARDS USA

FOR ELECTRICAL TORQUE SPECIFICATIONS SEE DWG NO. 128783-01-000