



**DANGER**

**Danger of electrical shock, burns or death.** Always remove all power sources before attempting any repair, service or diagnostic work. Power can be present from shore power, generator, inverter or battery. All power sources must be disabled and secured before performing any service.



**CAUTION**

If you lack the skills, tools or equipment to perform diagnostic or repair work leave such work to an authorized Winnebago Industries dealer or other qualified shop.



TO RECP-TV,FRONT  
FROM RECP-BLANK,  
OVHD,DINETTE

RECP-BLANK,OVHD,DINETTE (BRN)

FROM RECP-BLANK,OVHD,MICRO  
TO RECP-TV,FRONT

DETAIL BA

RCP-B DET-BA  
OVHD,DINETTE  
14-LUL C-8  
600 300

RCP-2 (BRN)  
OVHD,DINETTE

RCP-2 (BLU)  
DINETTE SP-01

RCP-E (BLU)  
EXTERIOR 39A

25D 29F TO A/C,FRONT

FROM A/C SWITCH  
TO A/C,FRONT

FROM RECP-BLANK,OVHD,MICRO  
TO RECP-BLANK,OVHD,DINETTE

1D5 76C 8 REC-ENT CTR-EXT  
(SEE ENTERTAINMENT  
CENTER INSTL)

GEN 4X4 BOX 39E 40T 39G 8

TO FRONT TV RECP

RCP-1 (BRN)  
COFFEE MAKER 26U

FROM RECP-BLANK,OVHD,MICRO  
TO RECP-COFFEE-MAKER

26U COFFEE MAKER

FROM RECP-SDW,GALLEY  
TO RECP-EXTERIOR

FROM GEN RECP BOX  
TO GENERATOR 4X4 BOX

FROM RECP-BDRM,LH,RR  
TO RECP-BDRM,RH,RR

REC-2 (BRN)  
BDRM,RH,RR SP-01

AC

AC

49X BED-QUEEN, CENTERED.  
26E COFFEE MAKER-WITHOUT.

- 76C ENTERTAINMNT CTR/EXT CASETTE
- 49X BED-QUEEN - BACKWALL
- 40T GEN-5.0KW ONAN-GAS-EMERALD
- 39G GEN-6.5KW-ONAN-GAS-EMERALD
- 39E GEN-4.0KW-ONAN-GAS-EMERALD
- 39A EXT RECEPTACLE DPLX 120VAC
- 29F A/C ROOF-TWO 13.500 BTU
- 26U COFFEE MAKER
- 26E COFFEE MAKER-WITHOUT
- 25D A/C ROOF AIR (1) 14,800 BTU
- 12D ELECTRICAL SYSTEM 30 AMP
- 1B1 CODES/STANDARDS USA

- 9 SEE GENERATOR INSTALLATION FOR ADDITIONAL INFORMATION.
- 8 ROUTE INSIDE COMPARTMENT ALONG BACKWALL. CLAMP AS REQUIRED.
- 7 WIRE ROUTED BELOW FLOOR. ATTACH TO FLOOR FRAME.
- 6 ROUTE WIRE THRU FLOOR.
- 5 WIRE ROUTED THRU SIDEWALL.
- 4 WIRE ROUTED IN ROOF.

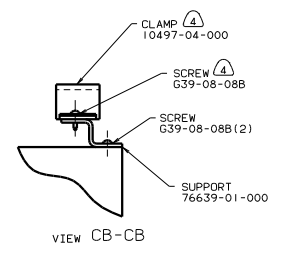
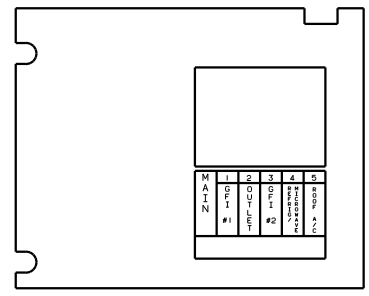
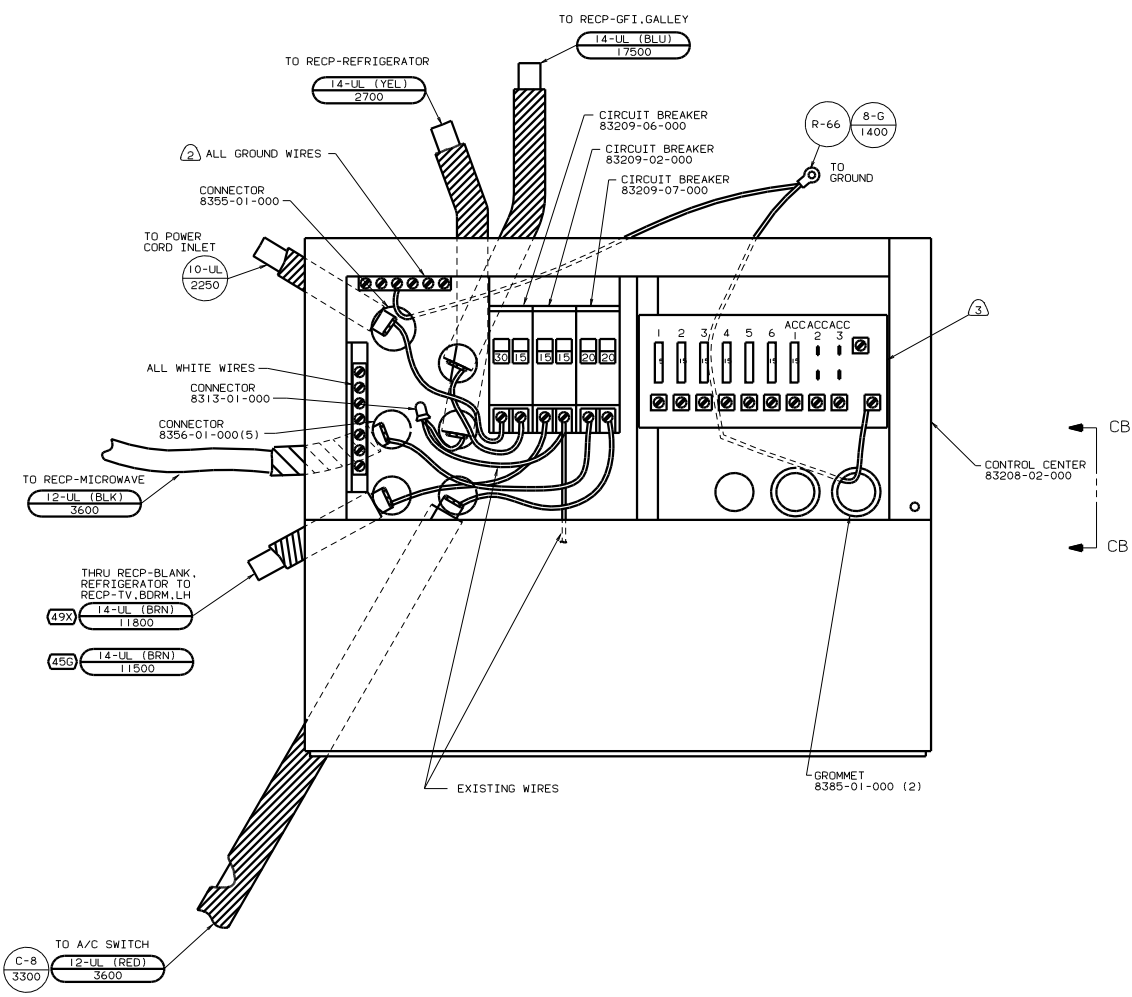
- 3. ALL GROUND WIRES ARE TO BE COVERED WITH TUBING 8041-02-000.
- 2. ALL WIRES ARE TO BE SECURED WITH CLAMP 10497-05-000 WITHIN 200 OF OUTLET BOXES AND SPLICES. USE SCREW G67-10-12B.
- 1. ALL WIRE TO BE SECURED WITH CLAMP 10495-01-000 OR CLIP 80734-02-000 EVERY 700. USE SCREW G67-10-12B UNLESS OTHERWISE SPECIFIED.

NOTES:

FOR ELECTRICAL  
TORQUE  
SPECIFICATIONS  
SEE DWG NO.  
128783-01-000

FOR  
ELECTRICAL  
CALLOUTS  
SEE DWG NO.  
121339-01-000

RIGHT SIDE  
00 F31B 1B1 12D  
WIRING INSTL-RBODY.110V(R30UL)  
SHEET 2 OF 3

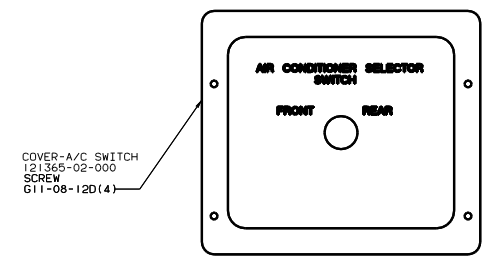
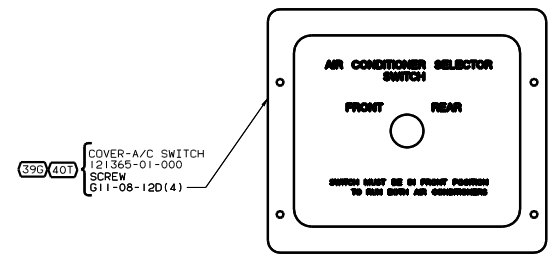
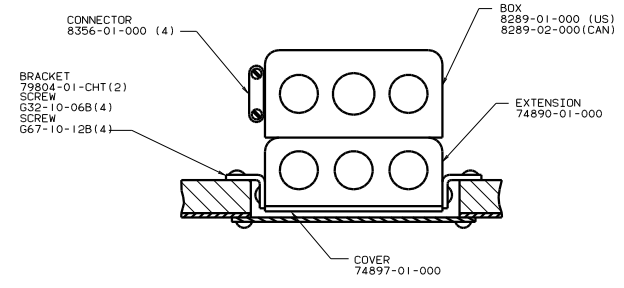
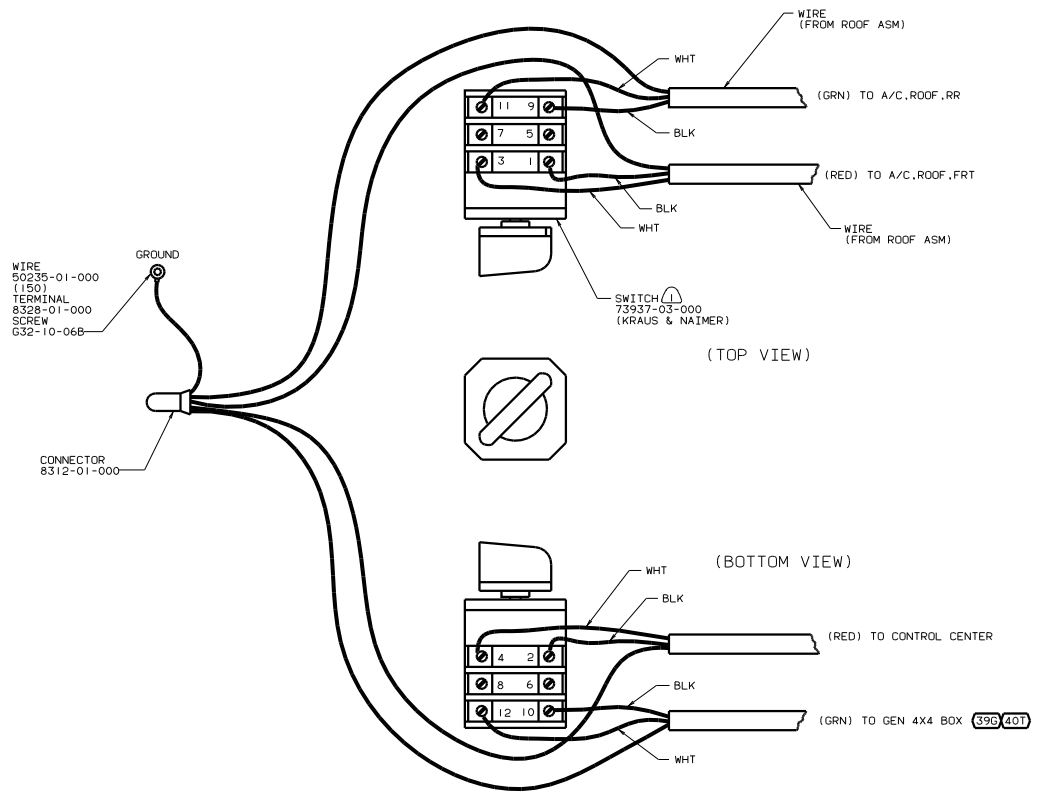


- 4 FASTEN ALL WIRES TO SUPPORT. USE ONE SCREW PER CLAMP.
- 3 SEE WIRING ISNTL-BODY.12V FOR ADDITIONAL INFORMATION.
- 2 ALL GROUND WIRES TO BE COVERED WITH TUBING 8041-02-000.
1. ALL ROMEX SHALL BE COVERED WITH CONDUIT-CONVOLUTE, SLIT 41953-01-000, 300 LESS THAN WIRE LENGTH.

FOR ELECTRICAL TORQUE SPECIFICATIONS SEE DWG NO. 128783-01-000

FOR ELECTRICAL CALLOUTS SEE DWG NO. 121339-01-000

- 49X BED-QUEEN - BACKWALL
- 45G BED-TWINS
- 120 ELECTRICAL SYSTEM 30 AMP
- 1B1 CODES/STANDARDS USA



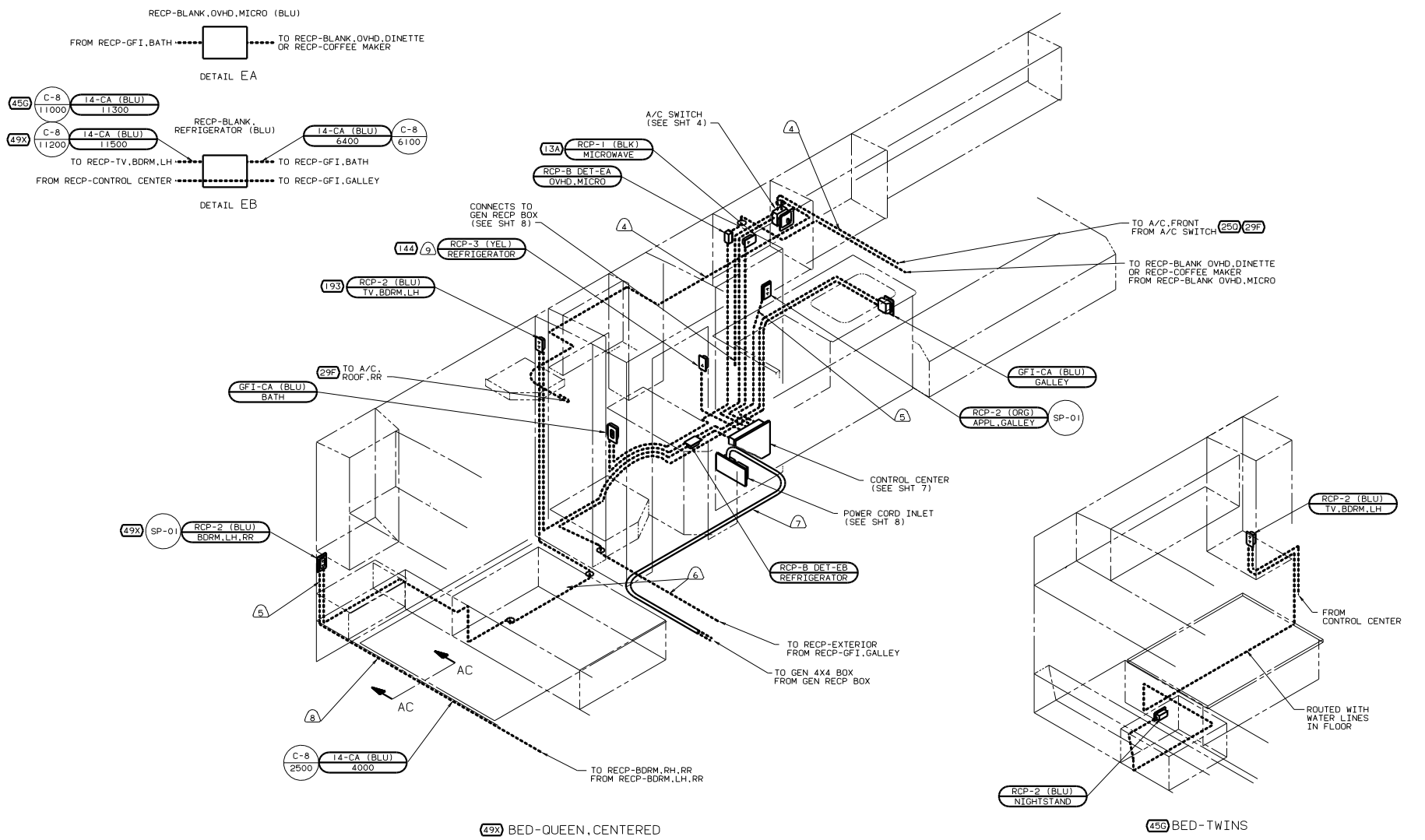
2. ALL GROUND WIRES TO BE COVERED WITH TUBING 8041-02-000.

FASTEN SWITCH TO COVER 74897-01-000 BEFORE FASTENING COVER TO BOX.

- 40T GEN-5, OKW ONAN-GAS-EMERALD
- 39G GEN-6, 5KW-ONAN-GAS-EMERALD
- 265 CODES/STANDARDS-CSA/CMVSS
- 1B1 CODES/STANDARDS USA

FOR ELECTRICAL CALLOUTS SEE DWG NO 121339-01-000

DUAL AIR SWITCH 00 F31B 1B1 265

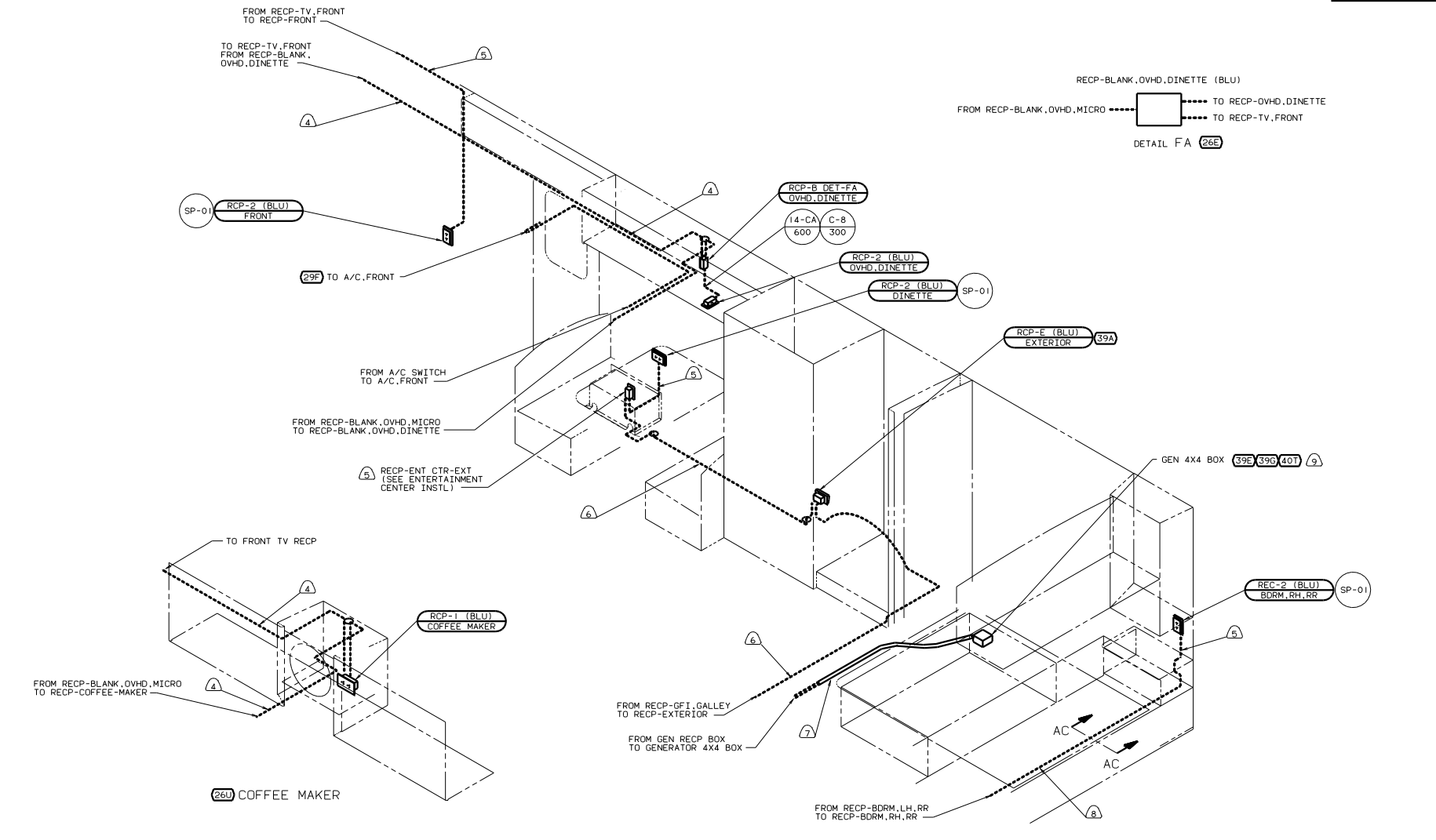


- (9) LOCATE ON TIEDOWN PLATE.
- (8) ROUTE INSIDE COMPARTMENT ALONG BACKWALL. CLAMP AS REQUIRED.
- (7) WIRE ROUTED BELOW FLOOR. ATTACH TO FLOOR FRAME.
- (6) ROUTE WIRE THRU FLOOR.
- (5) WIRE ROUTED THRU SIDEWALL.
- (4) WIRE ROUTED IN ROOF.

3. ALL GROUND WIRES ARE TO BE COVERED WITH TUBING 8041-02-000.
2. ALL WIRES ARE TO BE SECURED WITH CLAMP 10497-05-000 WITHIN 200 OF OUTLET BOXES AND SPLICES. USE SCREW G67-10-12B.
1. ALL WIRE TO BE SECURED WITH CLAMP 10495-01-000 OR CLIP 80734-02-000 EVERY 700. USE SCREW G67-10-12B UNLESS OTHERWISE SPECIFIED.

X-X	FOR ELECTRICAL CALLOUTS SEE DWG NO. 121339-01-000	FOR ELECTRICAL TORQUE SPECIFICATIONS SEE DWG NO. 128783-01-000

- (49X) BED-QUEEN - BACKWALL
- (45B) BED-TWINS
- (29F) A/C ROOF-TWO 13,500 BTU
- (26S) CODES/STANDARDS-CSA/CMVSS
- (25D) A/C ROOF AIR (1) 14,800 BTU
- (193) TV ANTENNA
- (144) REFRIGERATOR-DOUBLE DOOR
- (13A) MICROWAVE OVEN
- (12D) ELECTRICAL SYSTEM 30 AMP



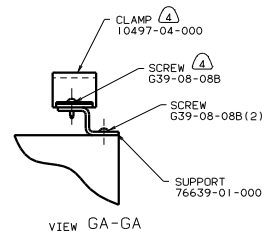
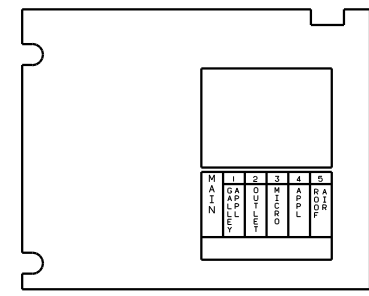
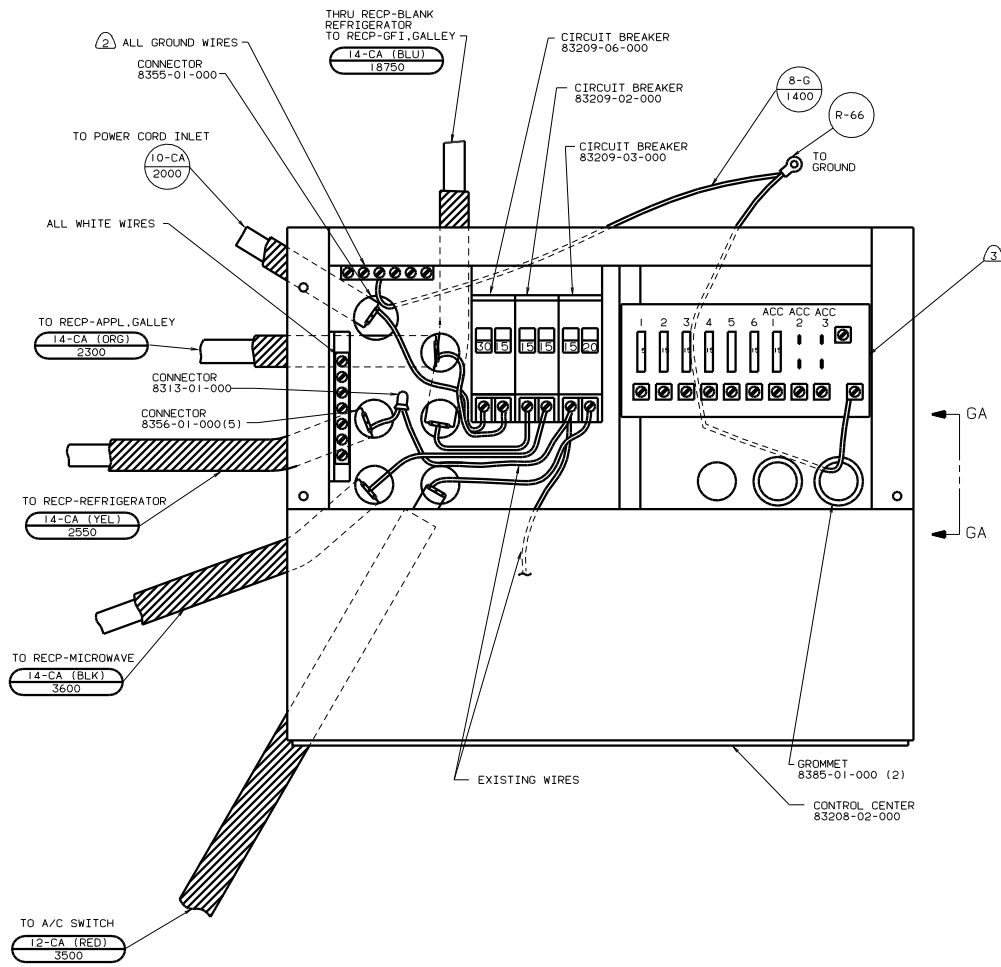
- 9) SEE GENERATOR INSTALLATION FOR ADDITIONAL INFORMATION.
  - 8) ROUTE INSIDE COMPARTMENT ALONG BACKWALL. CLAMP AS REQUIRED.
  - 7) WIRE ROUTED BELOW FLOOR. ATTACH TO FLOOR FRAME.
  - 6) ROUTE WIRE THRU FLOOR.
  - 5) WIRE ROUTED THRU SIDEWALL.
  - 4) WIRE ROUTED IN ROOF.
3. ALL GROUND WIRES ARE TO BE COVERED WITH TUBING 8041-02-000.
  2. ALL WIRES ARE TO BE SECURED WITH CLAMP 10497-05-000 WITHIN 200 OF OUTLET BOXES AND SPLICES. USE SCREW G67-10-12B.
  1. ALL WIRE TO BE SECURED WITH CLAMP 10495-01-000 OR CLIP 80734-02-000 EVERY 700. USE SCREW G67-10-12B UNLESS OTHERWISE SPECIFIED.

- 49X) BED-QUEEN - BACKWALL
- 40T) GEN-5.0KW ONAN-GAS-EMERALD
- 39B) GEN-6.5KW ONAN-GAS-EMERALD
- 39E) GEN-4.0KW ONAN-GAS-EMERALD
- 39A) EXT RECEPTACLE DPLX 120VAC
- 29F) A/C ROOF-TWO 13,500 BTU
- 26U) COFFEE MAKER
- 26E) COFFEE MAKER-WITHOUT
- 26S) CODES/STANDARDS-CSA/CMVSS
- 12D) ELECTRICAL SYSTEM 30 AMP

FOR ELECTRICAL TORQUE SPECIFICATIONS SEE DWG NO. 128783-01-000	X-X	FOR ELECTRICAL CALLOUTS SEE DWG NO. 121339-01-000
--	-----	---

RIGHT SIDE  
00 F31B (26S)

WIRING INSTL - BODY, 110V (R30CA)	FIG NO
SHEET 6 OF 9	131918



- 4 FASTEN ALL WIRES TO SUPPORT, USE ONE SCREW PER CLAMP.
- 3 SEE WIRING INSTL-BODY.12V FOR ADDITIONAL INFORMATION.
- 2 ALL GROUND WIRES TO BE COVERED WITH TUBING 8041-02-000.
1. ALL ROMEX SHALL BE COVERED WITH CONDUIT-CONVOLUTE.SLIT 41953-01-000. 300 LESS THAN WIRE LENGTH.

265 CODES/STANDARDS-CSA/CMVSS  
120 ELECTRICAL SYSTEM 30 AMP

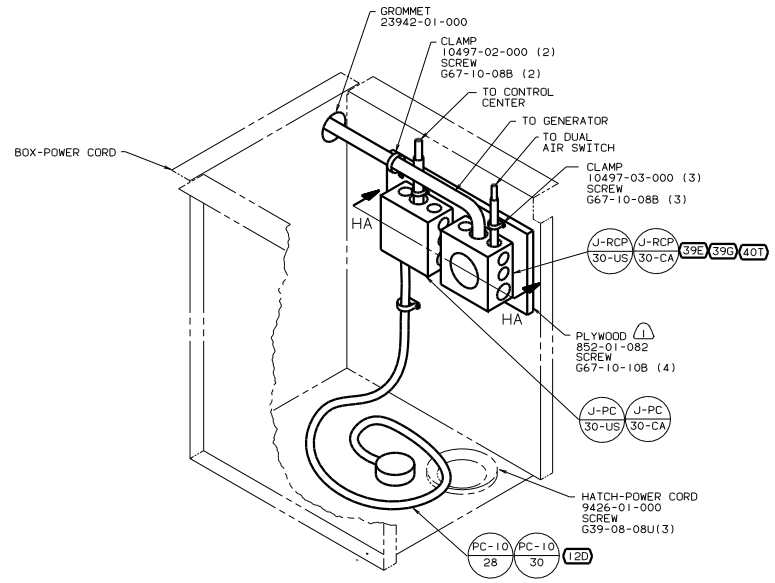
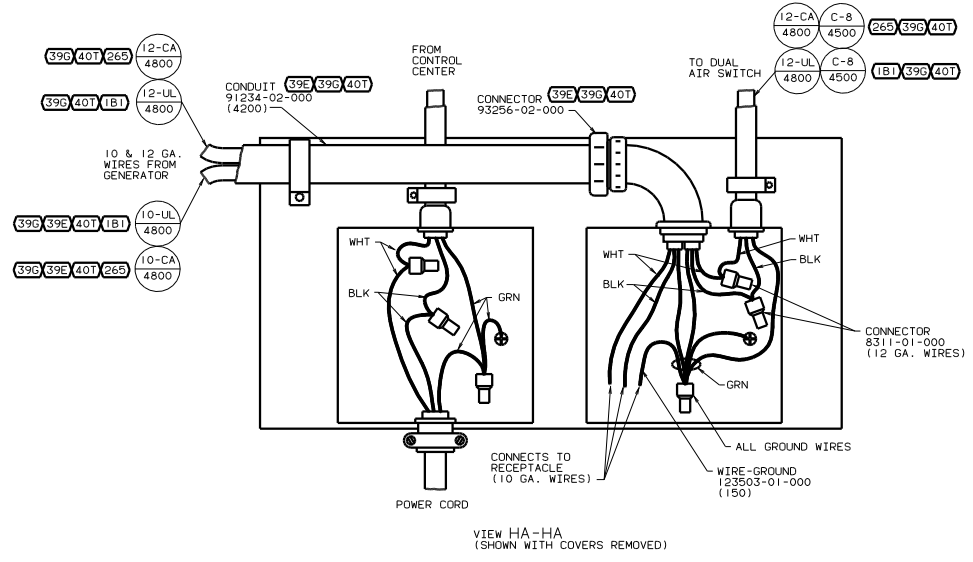
CONTROL CENTER  
00 F31B 265

FOR ELECTRICAL TORQUE SPECIFICATIONS SEE DWG NO. 128783-01-000

FOR ELECTRICAL CALLOUTS SEE DWG NO. 121339-01-000

WIRING INSTL-BODY.110V(CC)  
131918





- (40T) GEN-5.0KW ONAN-GAS-EMERALD
- (39G) GEN-6.5KW ONAN-GAS-EMERALD
- (39E) GEN-4.0KW ONAN-GAS-EMERALD
- (265) CODES/STANDARDS-CSA/CMVSS
- (12D) ELECTRICAL SYSTEM 30 AMP
- (1B1) CODES/STANDARDS USA

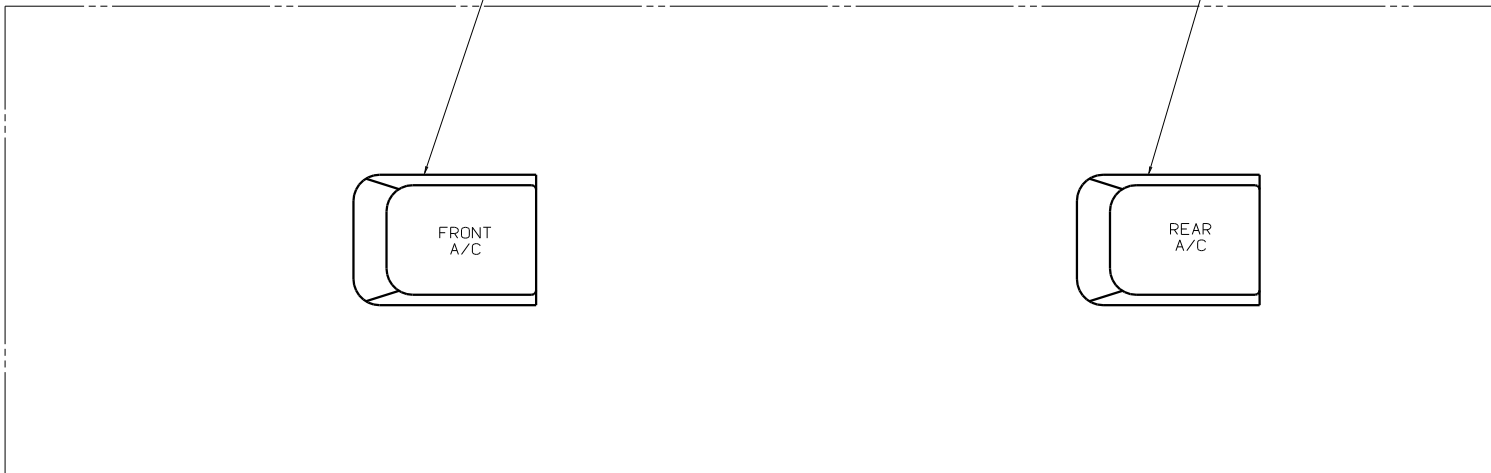
FOR ELECTRICAL TORQUE SPECIFICATIONS SEE DWG NO. 128783-01-000

FOR ELECTRICAL CALLOUTS SEE DWG NO. 121339-01-000

POWER CORD INLET  
00 F31B (1B1) (265)

WIRING INSTL-BODY.110V(PC)	
30 AMP 250 VOLT CIRCUIT	REV 1
SHEET 8 OF 9	DWG NO 131918

NOTES: (1) PAINT EXPOSED SURFACES BLACK 106112-01-000.



AIR CONDITIONER (250)

131188-01-CHT  
(14800 BTU)

AIR CONDITIONER (29F)

131185-01-CHT  
(13500 BTU)

CEILING ASM  
131184-01-CHT  
BOARD DIVIDER  
131184-01-CHT  
BOARD DIVIDER  
131184-02-CHT  
CEILING ASM

(250, 29F)

AIR CONDITIONER (29F)

131185-01-CHT  
(13500 BTU)

BOARD DIVIDER  
131184-02-CHT  
CEILING ASM  
131184-01-CHT

(29F)

FRONT  
A/C

REAR  
A/C

- (29F) A/C ROOF-TWO 13,500 BTU
- (265) CODES/STANDARDS-CSA/CMVSS
- (250) A/C ROOF AIR (1) 14,800 BTU
- (181) CODES/STANDARDS USA

A/C  
00 F31B (181, 265)

(X-X)  
FOR  
ELECTRICAL  
CALLOUTS  
SEE DWG NO.  
121339-01-000

131918

131918

131918

1. SEE WIRING INSTL-BODY.12V FOR ADDITIONAL INFORMATION.

NOTES:

