



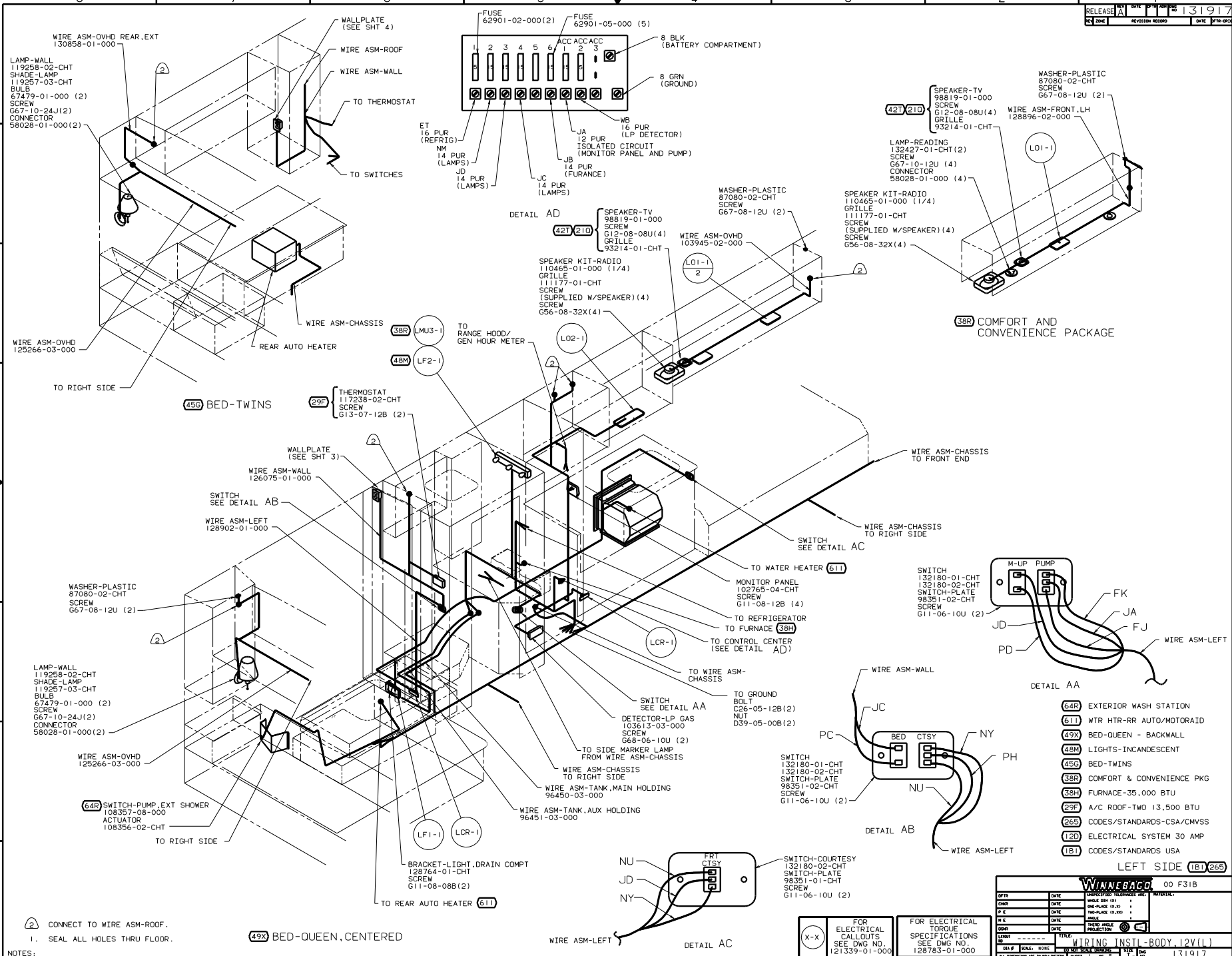
DANGER

Danger of electrical shock, burns or death. Always remove all power sources before attempting any repair, service or diagnostic work. Power can be present from shore power, generator, inverter or battery. All power sources must be disabled and secured before performing any service.



CAUTION

If you lack the skills, tools or equipment to perform diagnostic or repair work leave such work to an authorized Winnebago Industries dealer or other qualified shop.



NOTES:
 1. SEAL ALL HOLES THRU FLOOR.

CONNECT TO WIRE ASM-ROOF.
 49X BED-QUEEN, CENTERED

FOR ELECTRICAL CALLOUTS SEE DWG NO. 121339-01-000

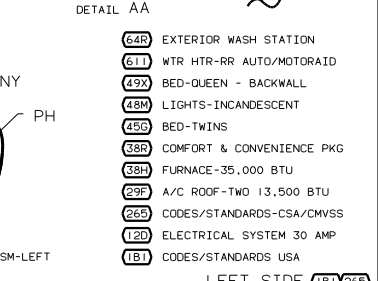
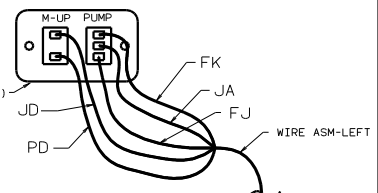
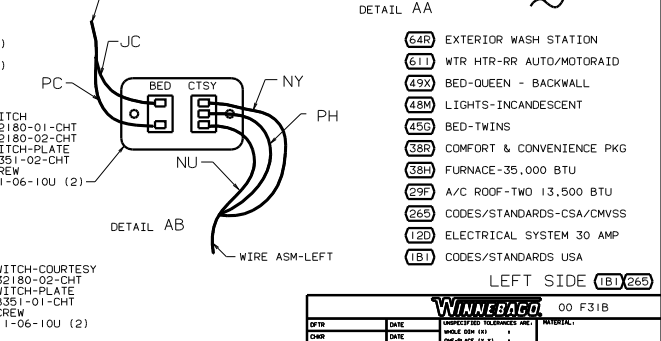
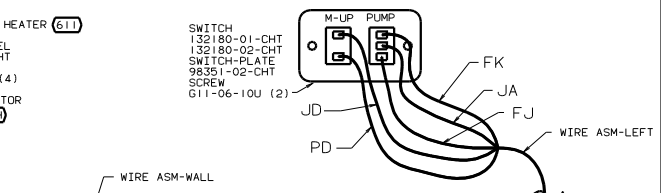
FOR ELECTRICAL TORQUE SPECIFICATIONS SEE DWG NO. 128783-01-000

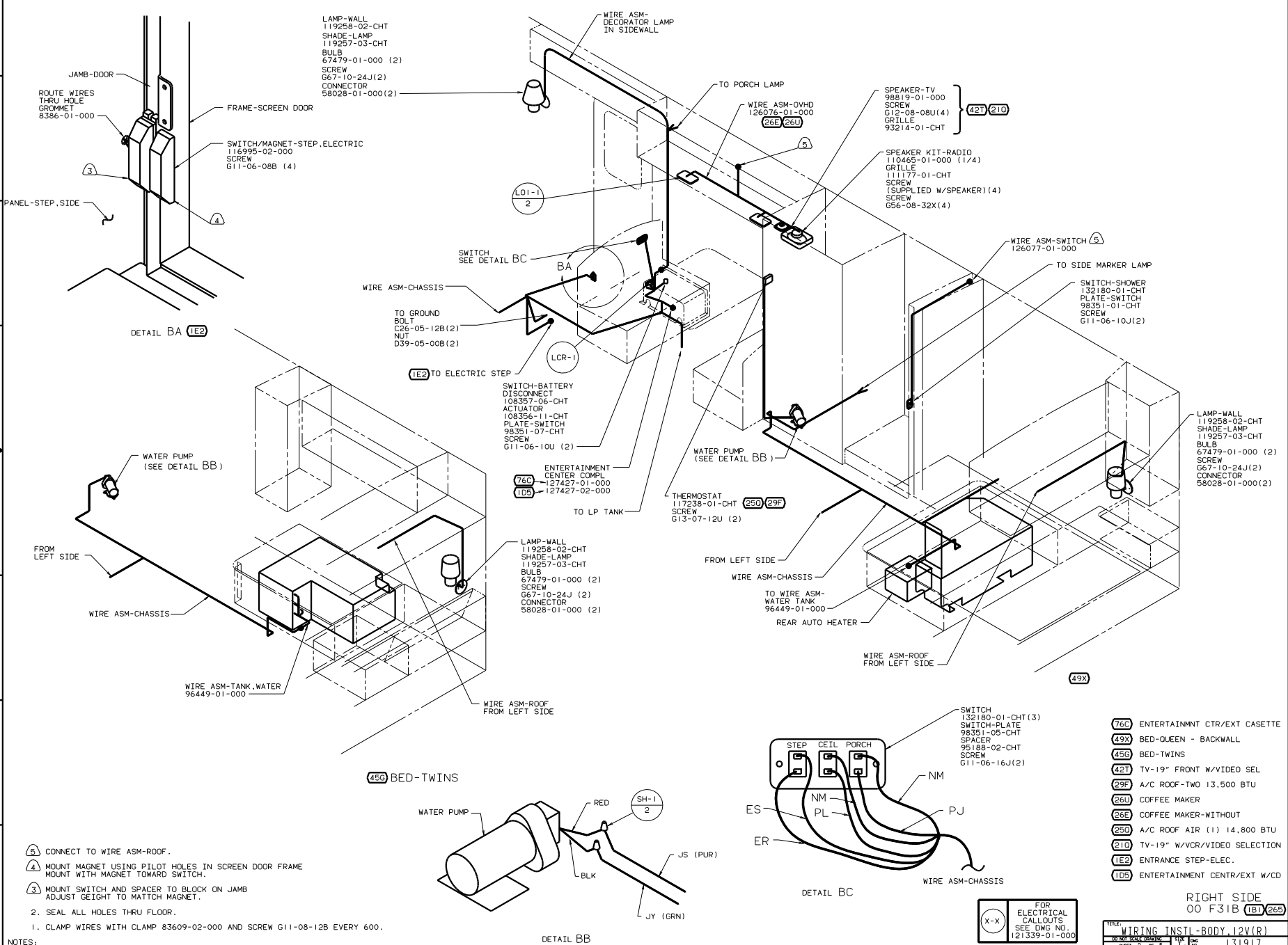
WINNEBAGO 00 F31B

DATE	DESCRIPTION	BY	CHKD

WIRING INSTL - BODY, 12V(1)
 SHEET 1 OF 5
 131917

- DETAIL AA**
- 64R EXTERIOR WASH STATION
 - 61I WTR HTR-RR AUTO/MOTORAID
 - 49X BED-QUEEN - BACKWALL
 - 48M LIGHTS-INCANDESCENT
 - 45G BED-TWINS
 - 38R COMFORT & CONVENIENCE PKG
 - 38H FURNACE-35,000 BTU
 - 29F A/C ROOF-TWO 13,500 BTU
 - 26B CODES/STANDARDS-CSA/CMVSS
 - 12D ELECTRICAL SYSTEM 30 AMP
 - 18I CODES/STANDARDS USA
- LEFT SIDE (18I) 26B**





LAMP-WALL
119258-02-CHT
SHADE-LAMP
119257-03-CHT
BULB
67479-01-000 (2)
SCREW
G67-10-24J(2)
CONNECTOR
58028-01-000(2)

SPEAKER-TV
98819-01-000
SCREW
G12-08-08U(4)
GRILLE
93214-01-CHT } (421) (210)

SPEAKER KIT-RADIO
110465-01-000 (1/4)
GRILLE
111177-01-CHT
SCREW
(SUPPLIED W/SPEAKER) (4)
SCREW
G56-08-32X(4)

SWITCH
SEE DETAIL BC

TO GROUND
BOLT
C26-05-12B(2)
NUT
D39-05-00B(2)

TO ELECTRIC STEP
SWITCH-BATTERY
DISCONNECT
108357-06-CHT
ACTUATOR
108356-11-CHT
PLATE-SWITCH
98351-07-CHT
SCREW
G11-06-10U (2)

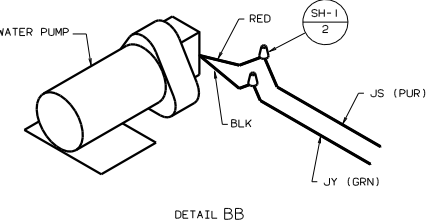
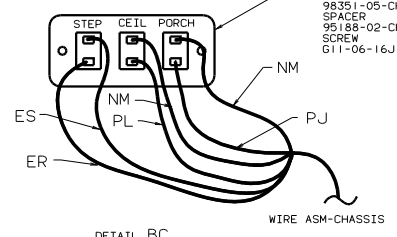
ENTERTAINMENT
CENTER COMPL
127427-01-000
(76C)
127427-02-000
(1D5)

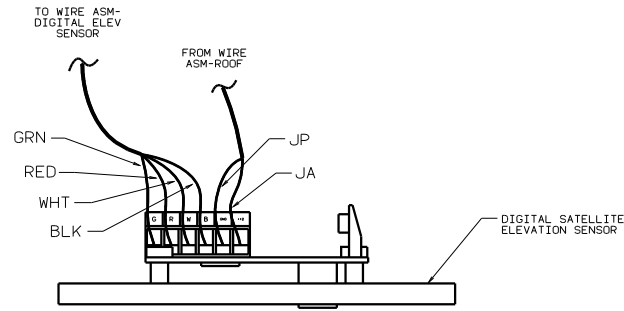
LAMP-WALL
119258-02-CHT
SHADE-LAMP
119257-03-CHT
BULB
67479-01-000 (2)
SCREW
G67-10-24J (2)
CONNECTOR
58028-01-000 (2)

SWITCH
132180-01-CHT(3)
SWITCH-PLATE
98351-05-CHT
SPACER
95188-02-CHT
SCREW
G11-06-16J(2)

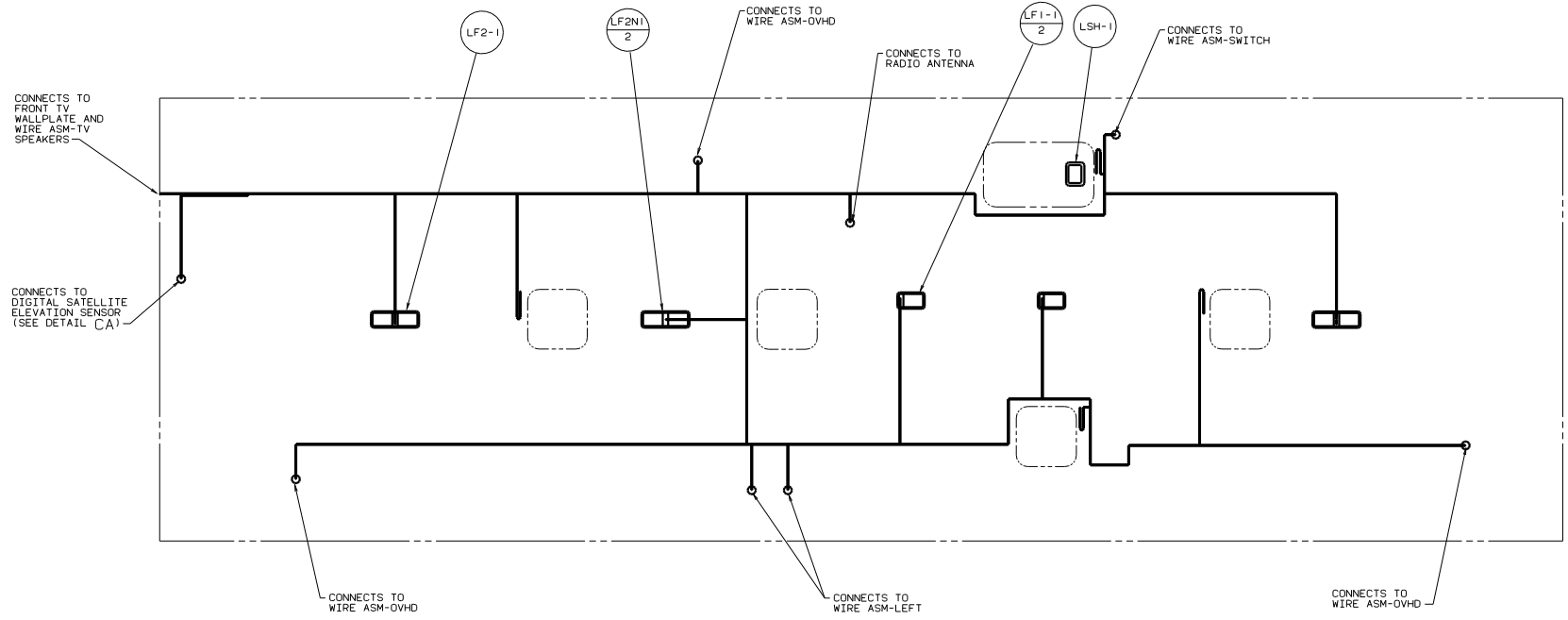
- (76C) ENTERTAINMENT CTR/EXT CASSETTE
- (49X) BED-QUEEN - BACKWALL
- (45C) BED-TWINS
- (421) TV-19" FRONT W/VIDEO SEL
- (29F) A/C ROOF-TWO 13,500 BTU
- (26U) COFFEE MAKER
- (26E) COFFEE MAKER-WITHOUT
- (25D) A/C ROOF AIR (1) 14,800 BTU
- (210) TV-19" W/VCR/VIDEO SELECTION
- (1E2) ENTRANCE STEP-ELEC.
- (1D5) ENTERTAINMENT CTR/EXT W/CD

- (A) CONNECT TO WIRE ASM-ROOF.
 - (4) MOUNT MAGNET USING PILOT HOLES IN SCREEN DOOR FRAME MOUNT WITH MAGNET TOWARD SWITCH.
 - (3) MOUNT SWITCH AND SPACER TO BLOCK ON JAMB ADJUST GEIGHT TO MATCH MAGNET.
2. SEAL ALL HOLES THRU FLOOR.
1. CLAMP WIRES WITH CLAMP 83609-02-000 AND SCREW G11-08-12B EVERY 600.





DETAIL CA



CONNECTS TO FRONT TV WALLPLATE AND WIRE ASM-TV SPEAKERS

CONNECTS TO DIGITAL SATELLITE ELEVATION SENSOR (SEE DETAIL CA)

CONNECTS TO WIRE ASM-OVHD

CONNECTS TO WIRE ASM-LEFT

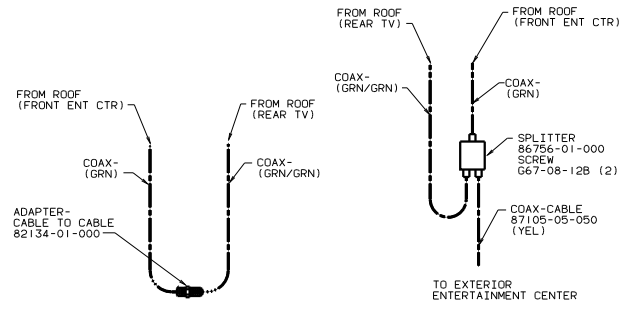
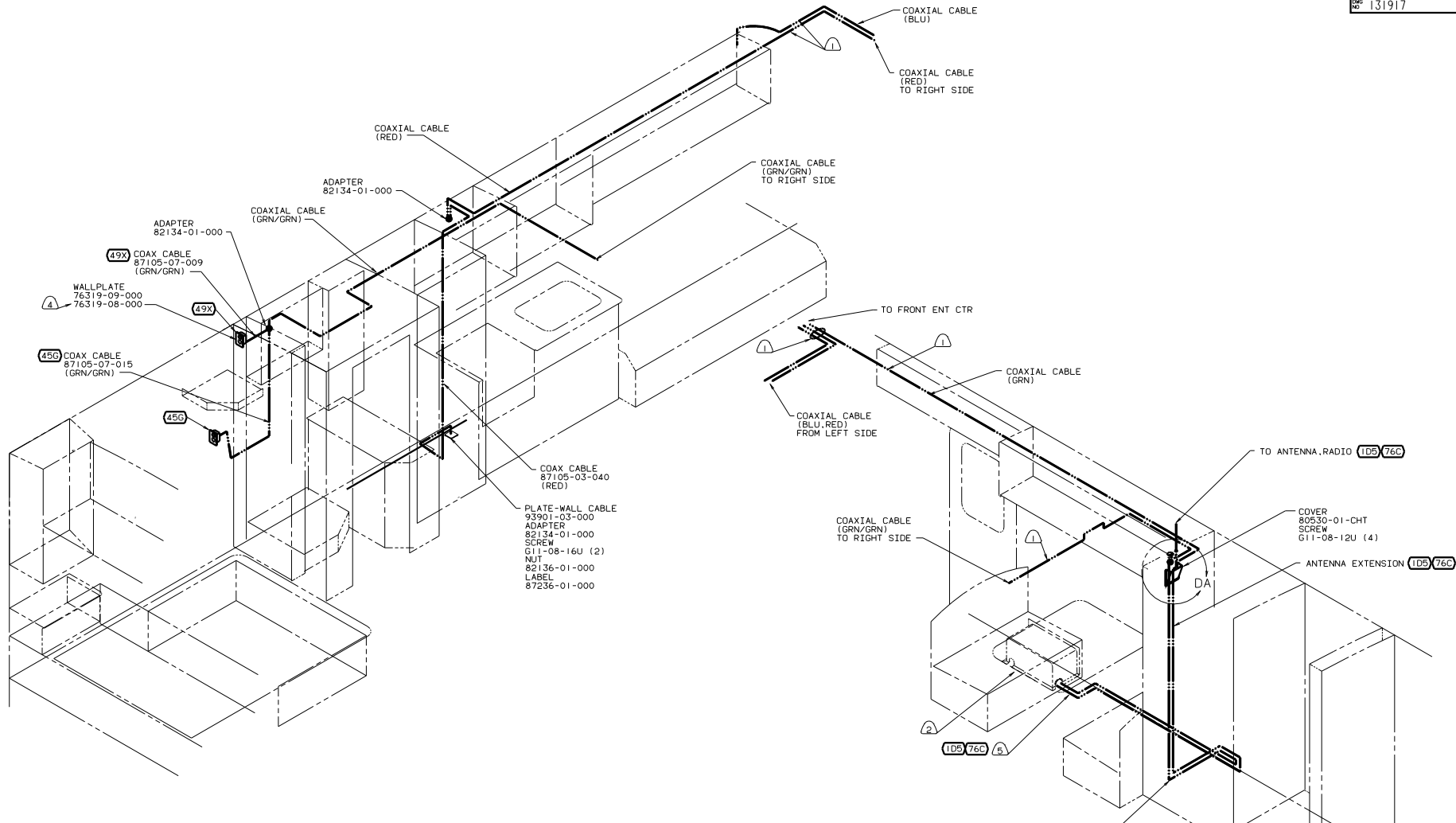
CONNECTS TO WIRE ASM-DVHD

(X-X)	FOR ELECTRICAL CALLOUTS
	SEE DWG NO 121339-01-000

CEILING LAMPS 00 F31B (1B1) (265)

TITLE: WIRING INSTL-BODY 12V (CL)	
NO. OF SHEETS: 5	SHEET NO: 3
DWG NO: 131917	

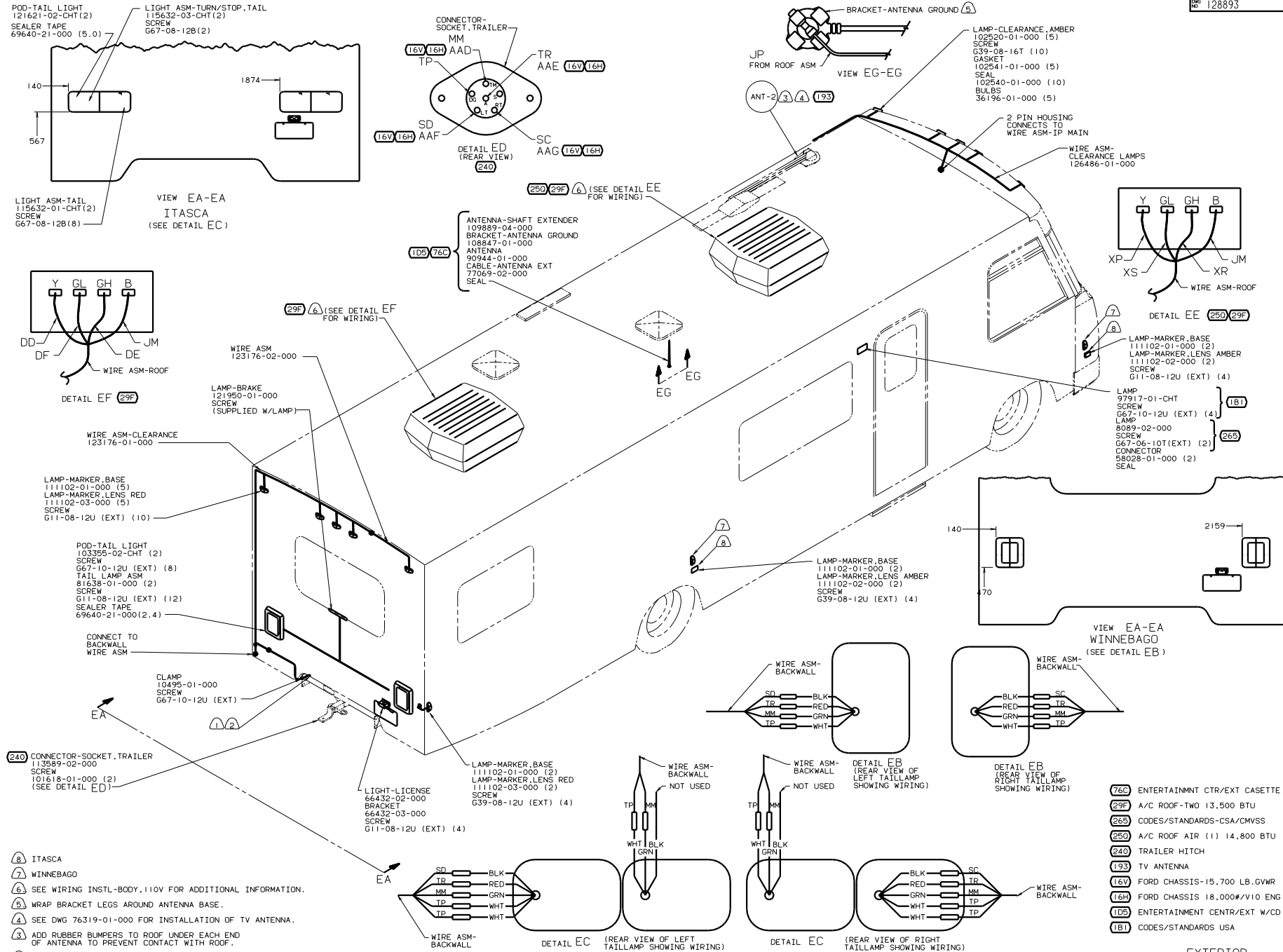
NOTES:



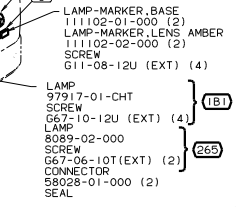
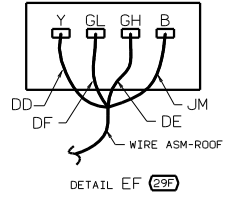
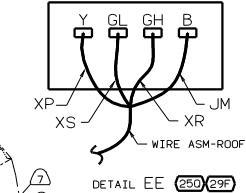
- 76C ENTERTAINMENT CTR/EXT CASSETTE
- 49X BED-QUEEN - BACKWALL
- 45D BED-TWINS
- 42T TV-19" FRONT W/VIDEO SEL
- 265 CODES/STANDARDS-CSA/CMVSS
- 210 TV-19" W/VCR/VIDEO SELECTION
- 193 TV ANTENNA
- 1D5 ENTERTAINMENT CTR/EXT W/CD
- 1B1 CODES/STANDARDS USA

- NOTES:
- 5 ROUTED THRU FLOOR.
 - 4 USE WITH DECORATIVE PANELING.
 - 3 WITHOUT 76C OR 1D5
 - 2 SEE ENTERTAINMENT CENTER INSTALLATION FOR ADDITIONAL INFORMATION.
 - 1 WIRE IN ROOF.

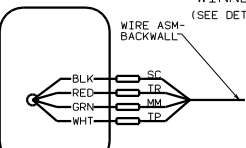
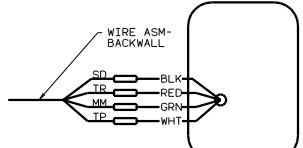
FOR ELECTRICAL CALLOUTS SEE DWG NO. 121339-01-000



VIEW EA-EA
ITASCA
(SEE DETAIL EC)

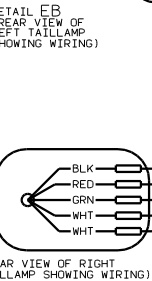
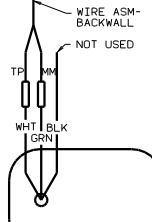
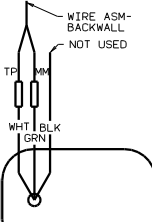


VIEW EA-EA
WINNEBAGO
(SEE DETAIL EB)



CONNECTOR-SOCKET, TRAILER
CONNECTOR-SOCKET, TRAILER
CONNECTOR-SOCKET, TRAILER

LAMP-MARKER, BASE
LAMP-MARKER, LENS RED
LAMP-MARKER, LENS RED
LAMP-MARKER, LENS RED



- NOTES:
- TAPE BRANCH BACK ALONG WIRE ASM WITH TAPE 8363-01-000.
 - CONNECTOR-PLUG, TRAILER 113589-01-000 TO BE SUPPLIED LOOSE IN COACH WITH TRAILER TOW PACKAGE, 240.
 - ADD RUBBER BUMPERS TO ROOF UNDER EACH END OF ANTENNA TO PREVENT CONTACT WITH ROOF.
 - SEE DWG 76319-01-000 FOR INSTALLATION OF TV ANTENNA.
 - WRAP BRACKET LEGS AROUND ANTENNA BASE.
 - SEE WIRING INSTL-BODY, 110V FOR ADDITIONAL INFORMATION.
 - WINNEBAGO
 - ITASCA

FOR ELECTRICAL CALLOUTS SEE DWG NO. 121339-01-000

- (760) ENTERTAINMENT CTR/EXT CASSETTE
- (29F) A/C ROOF-TWO 13,500 BTU
- (265) CODES/STANDARDS-CSA/CMVSS
- (250) A/C ROOF AIR (1) 14,800 BTU
- (240) TRAILER HITCH
- (193) TV ANTENNA
- (16V) FORD CHASSIS-15,700 LB. GVWR
- (16A) FORD CHASSIS 18,000# /V10 ENG
- (105) ENTERTAINMENT CENTR/EXT W/CD
- (181) CODES/STANDARDS USA

EXTERIOR 00 F31B (181, 265)
WIRING INSTL-BODY, 12V (EX)
131917