



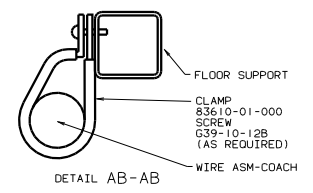
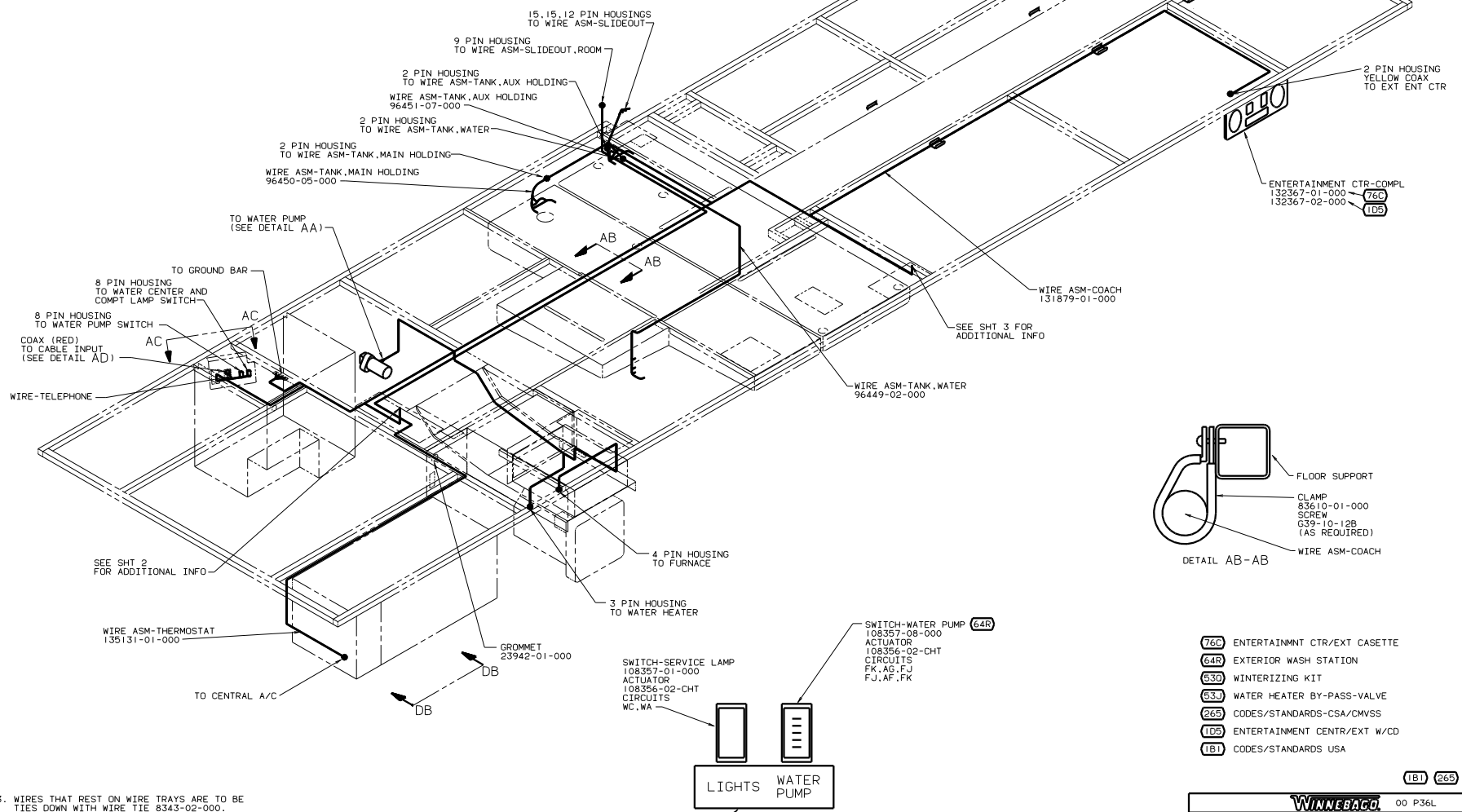
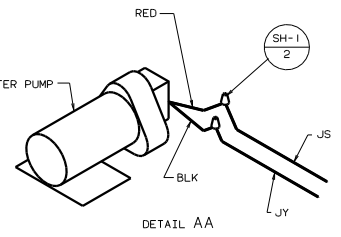
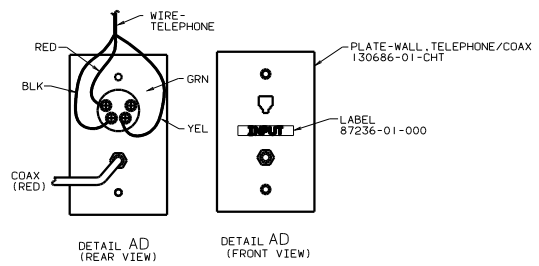
**DANGER**

**Danger of electrical shock, burns or death.** Always remove all power sources before attempting any repair, service or diagnostic work. Power can be present from shore power, generator, inverter or battery. All power sources must be disabled and secured before performing any service.



**CAUTION**

If you lack the skills, tools or equipment to perform diagnostic or repair work leave such work to an authorized Winnebago Industries dealer or other qualified shop.



- (76C) ENTERTAINMENT CTR/EXT CASSETTE
- (64R) EXTERIOR WASH STATION
- (530) WINTERIZING KIT
- (533) WATER HEATER BY-PASS-VALVE
- (265) CODES/STANDARDS-CSA/CMVSS
- (105) ENTERTAINMENT CENTR/EXT W/CD
- (1B1) CODES/STANDARDS USA

3. WIRES THAT REST ON WIRE TRAYS ARE TO BE TIES DOWN WITH WIRE TIE 8343-02-000.
2. CLAMP TO FLOOR SUPPORT TUBES AS NECESSARY WITH CLAMP 10497-01-000
1. ALL WIRES TO BE CLAMPED WITH CLAMP 10495-01-000 OR CLIP 80734-02-000 EVERY 700. USE SCREW G67-10-12B UNLESS OTHERWISE SPECIFIED.

LABEL  
117628-02-000

(X-X)  
FOR ELECTRICAL CALLOUTS  
SEE DWG NO  
121339-01-000

FOR ELECTRICAL TORQUE SPECIFICATIONS  
SEE DWG NO.  
128763-01-000

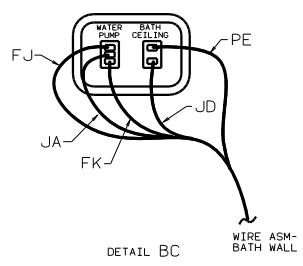
WINNEBAGO 00 P36L

DATE	UNSPECIFIED TOLERANCES ARE:	MATERIAL
DATE	WHOLE DIM (X)	
DATE	ONE-PLACE (X.X)	
DATE	TWO-PLACE (X.XX)	
DATE	THREE-PLACE (X.XXX)	
DATE	ANGLE	
DATE	ROUND W/ANGLE	
DATE	PROJECTION	

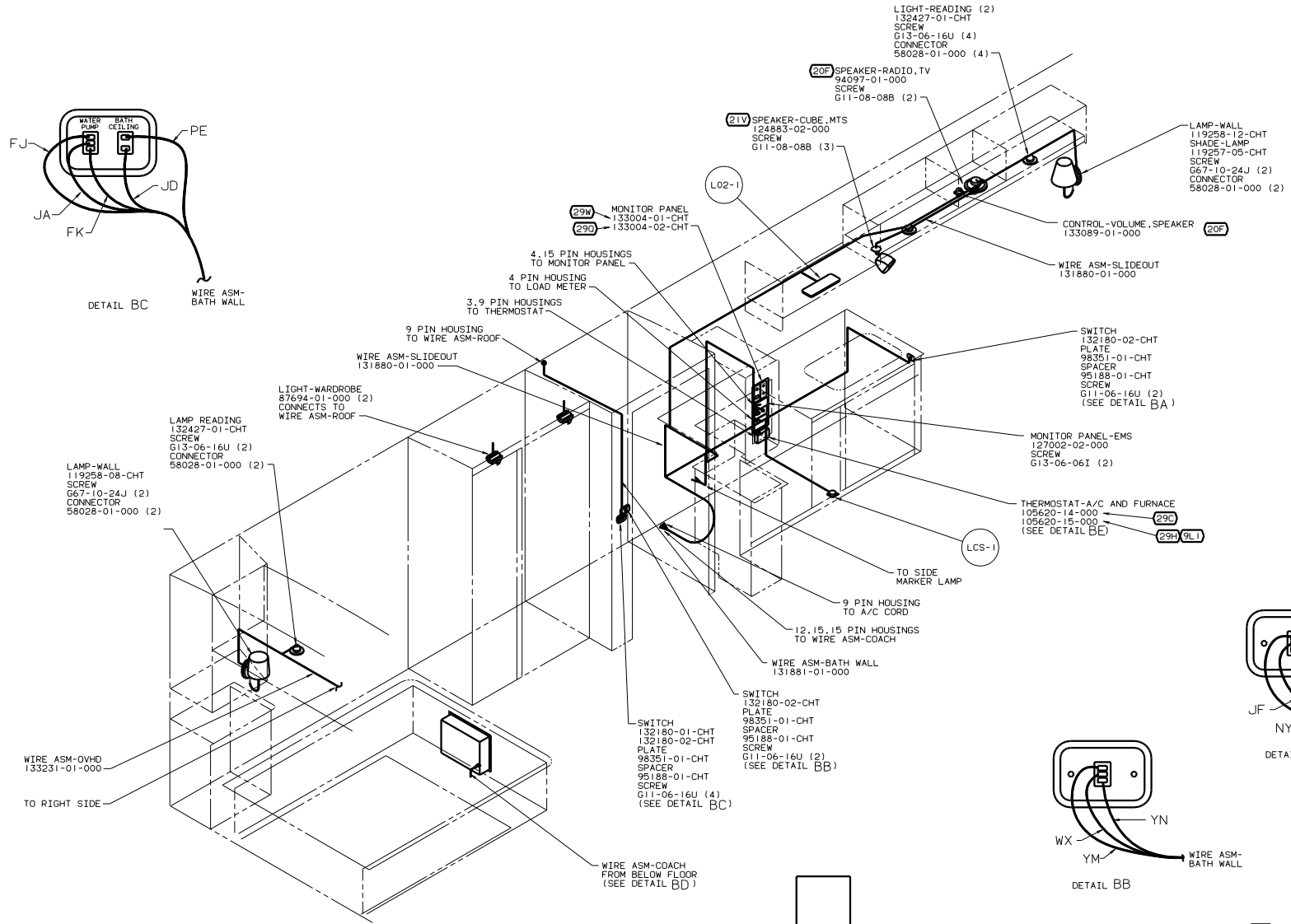
WIRING INSTL-BODY, 12V(BL)

SHEET 1 OF 6

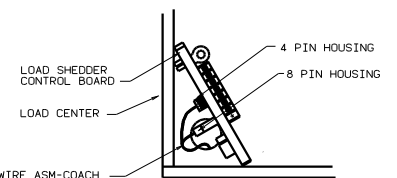
REF: 130345-N



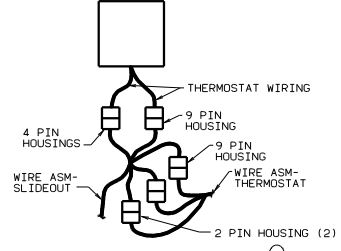
DETAIL BC



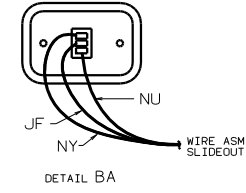
(49X) BED-QUEEN - BACKWALL



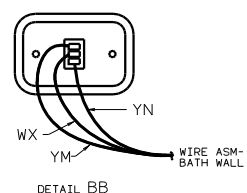
DETAIL BD



DETAIL BE



DETAIL BA



DETAIL BB

- (9L1) HOME COMFORT PLUS PACKAGE
- (29H) HEAT PUMP-A/C CENTRAL
- (29C) A/C CENTRAL
- (49X) BED-QUEEN - BACKWALL
- (29H) SOLAR PANEL/BATTERY CHRGR W/O
- (29D) SOLAR PANEL-10 WATT
- (26S) CODES/STANDARDS-CSA/CMVSS
- (21V) SOUND SYSTEM DELUXE
- (20F) DELUXE SOUND SYSTEM-WITHOUT
- (1B1) CODES/STANDARDS USA

FOR ELECTRICAL TORQUE SPECIFICATIONS SEE DWG NO. 128783-01-000

(X-X)

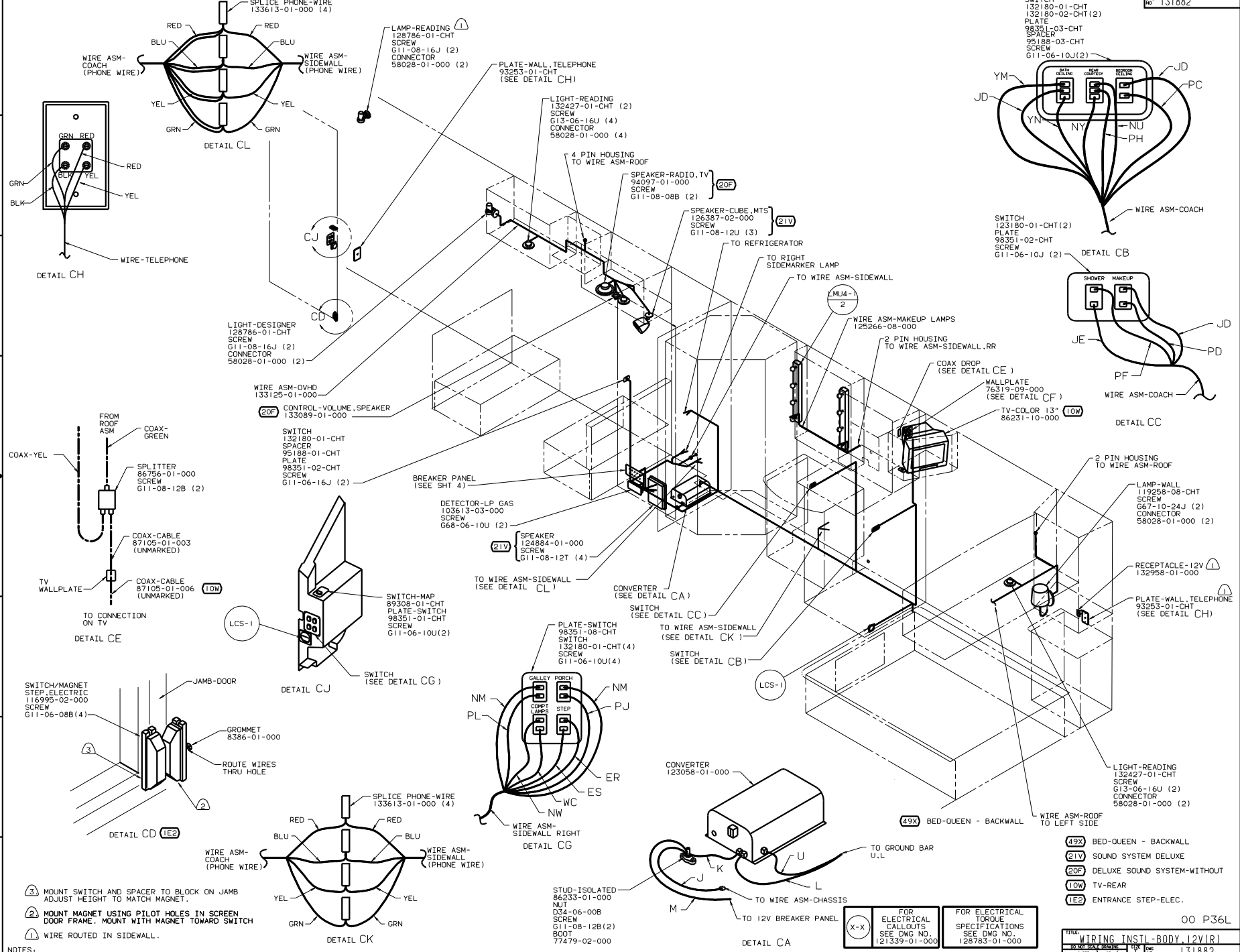
FOR ELECTRICAL CALLOUTS SEE DWG NO. 121339-01-000

(1B1) (26S) (48M) 00 P36L

TITLE: WIRING INSTL-BODY, 12V(L)

NO. OF SHEETS: 6 SHEET 2 OF 6

DATE: 131882



NOTES:

8 7 6 5 4 3 2 1

- ③ MOUNT SWITCH AND SPACER TO BLOCK ON JAMB ADJUST HEIGHT TO MATCH MAGNET.
- ② MOUNT MAGNET USING PILOT HOLES IN SCREEN DOOR FRAME. MOUNT WITH MAGNET TOWARD SWITCH
- ① WIRE ROUTED IN SIDEWALL.

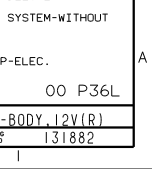
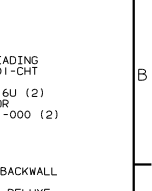
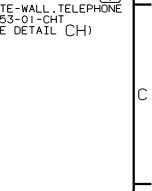
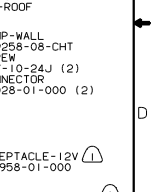
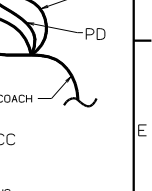
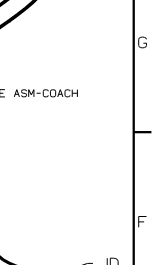
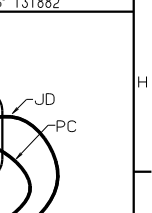
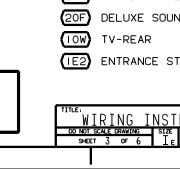
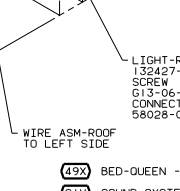
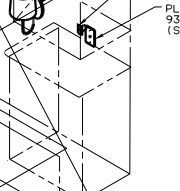
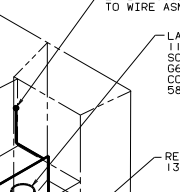
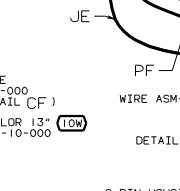
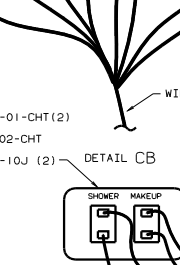
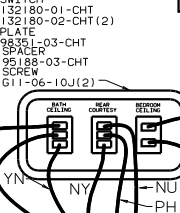
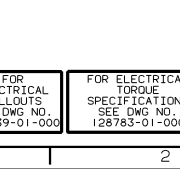
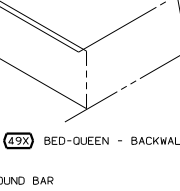
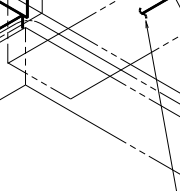
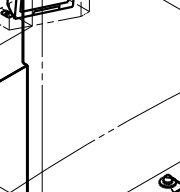
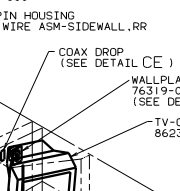
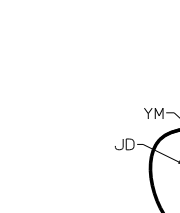
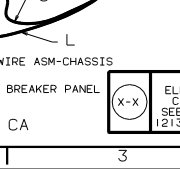
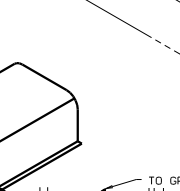
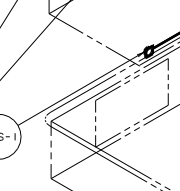
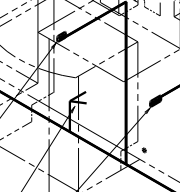
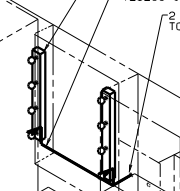
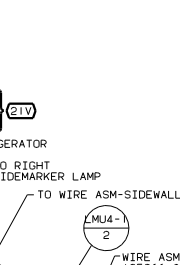
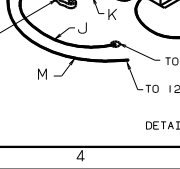
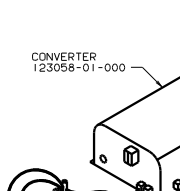
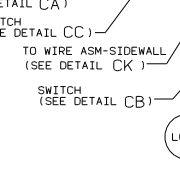
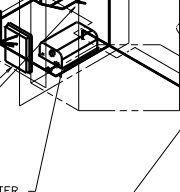
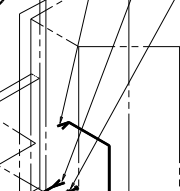
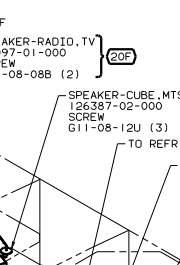
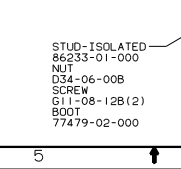
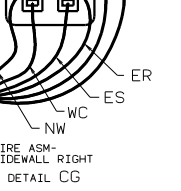
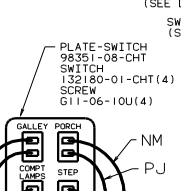
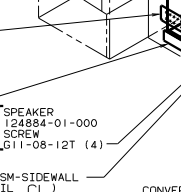
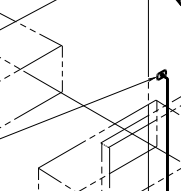
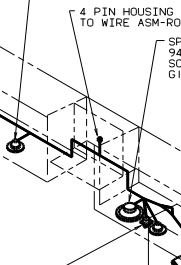
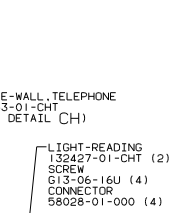
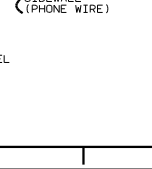
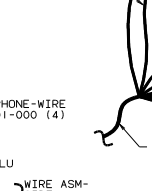
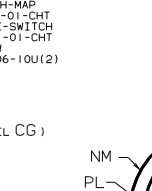
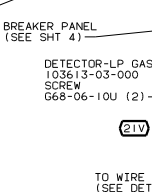
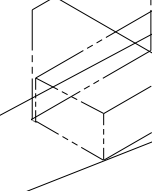
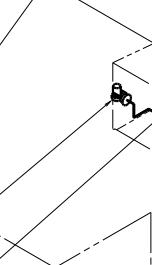
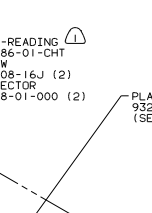
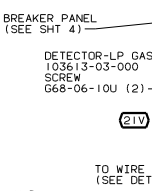
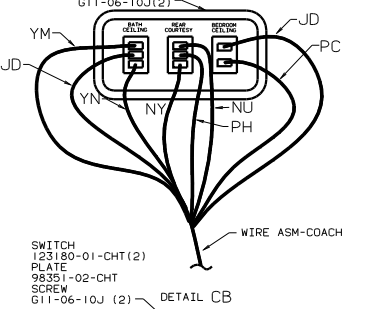
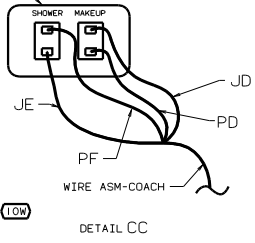
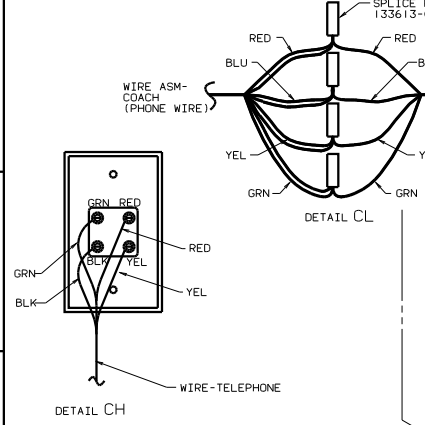
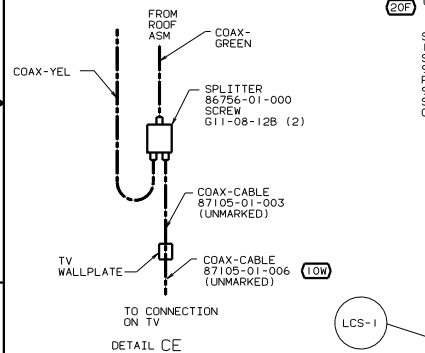
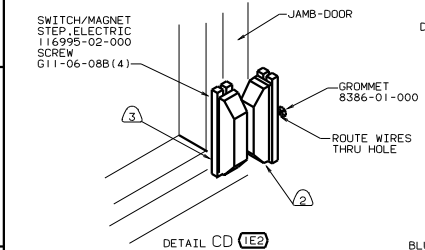
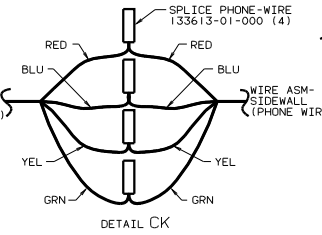
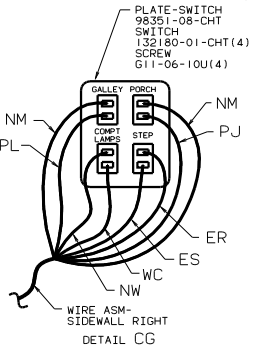
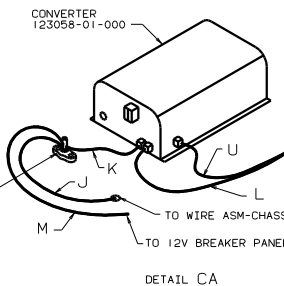
(X-X)  
FOR ELECTRICAL CALLOUTS SEE DWG NO. 121339-01-000

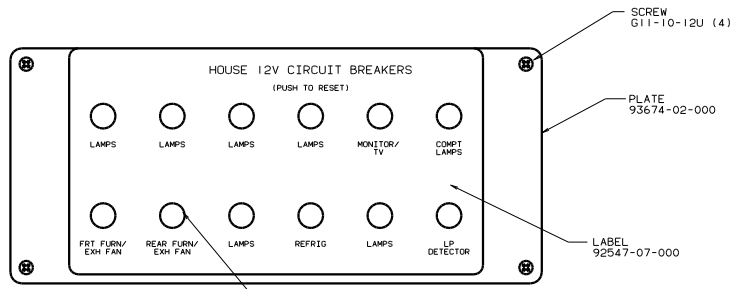
FOR ELECTRICAL SPECIFICATIONS SEE DWG NO. 128783-01-000

FILE: WIRING INSTL-BODY.12V(R)  
SHEET 3 OF 6  
131882

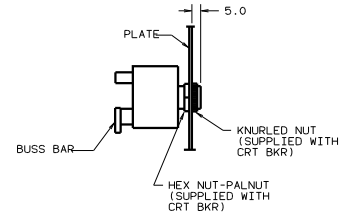
00 P36L

- (49X) BED-QUEEN - BACKWALL
- (21V) SOUND SYSTEM DELUXE
- (20F) DELUXE SOUND SYSTEM-WITHOUT
- (10W) TV-REAR
- (TE2) ENTRANCE STEP-ELEC.

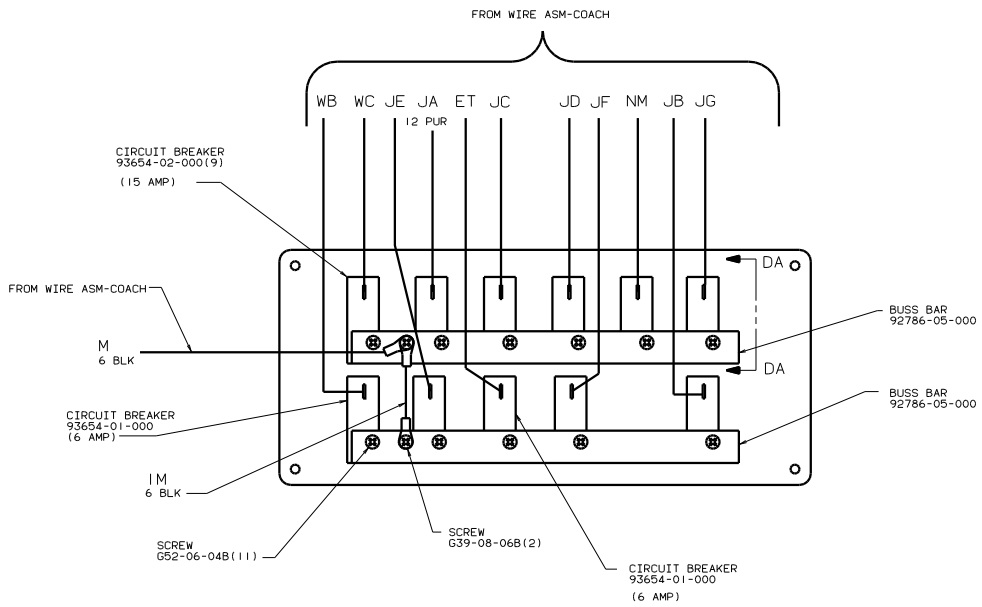




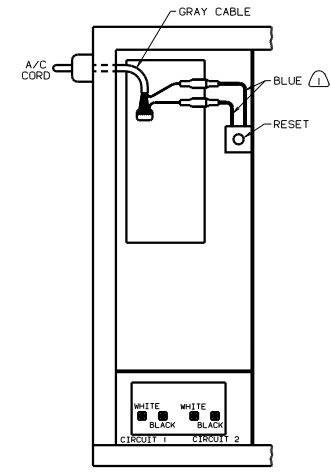
CIRCUIT BREAKER (FRONT VIEW)



SECTION DA-DA



CIRCUIT BREAKER (BACK VIEW)



VIEW DB-DB

NOTE: CONNECT BLUE WIRES FROM RESET TO THE BLUE WIRE WITH SPADE TERMINALS ON A/C CORD WITH 29H 9L1 FEATURE.

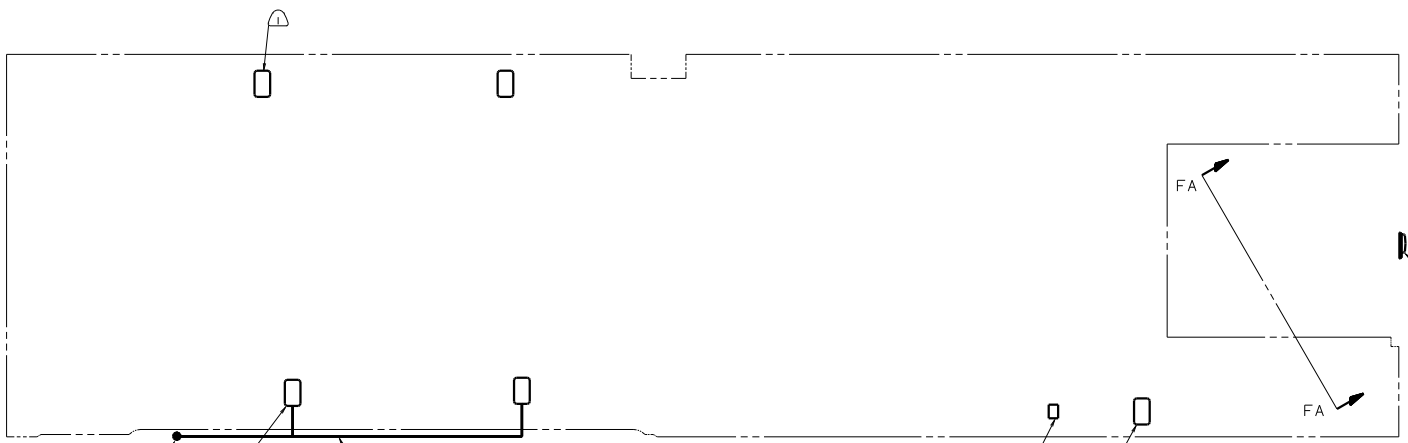
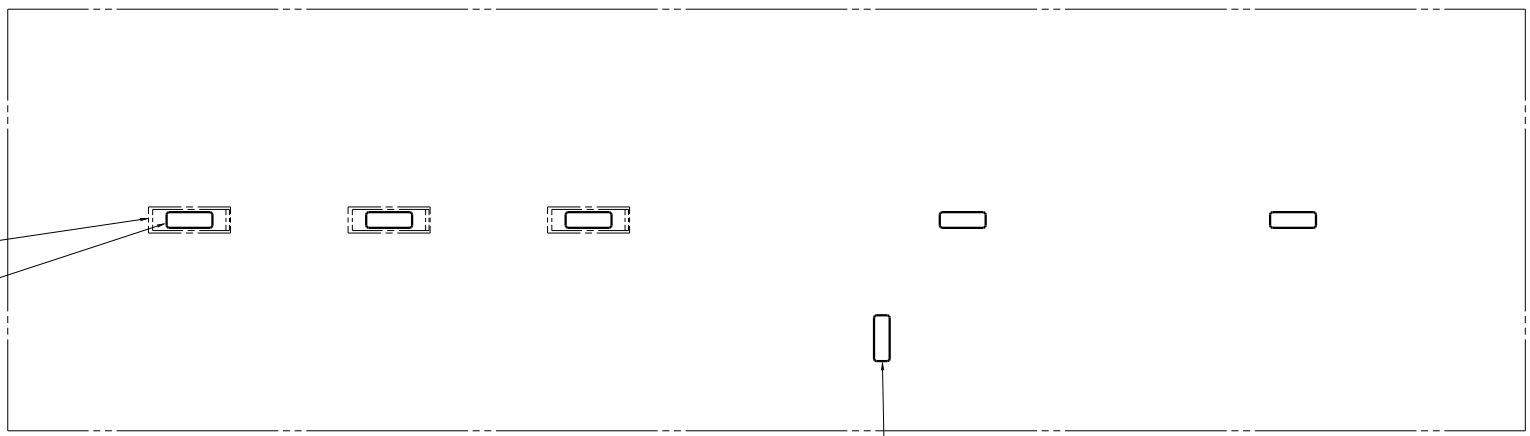
FOR ELECTRICAL TORQUE SPECIFICATIONS SEE DWG NO. 128783-01-000

00 P36L

WIRING INSTL-BODY, 12V(BP)

SHEET 4 OF 6

DWG NO 131882



LF1-1

TO WIRE ASM-SLIDEOUT ROOM

LF1-1 4

WIRE ASM-COMPT LAMPS 125266-09-000

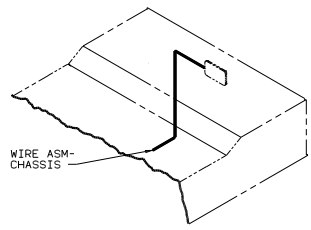
LAMP 86280-01-000  
 SCREW 667-10-12U(2)  
 CONNECTOR 58028-01-000(2)

LFNI

LF1-1

FA

FA



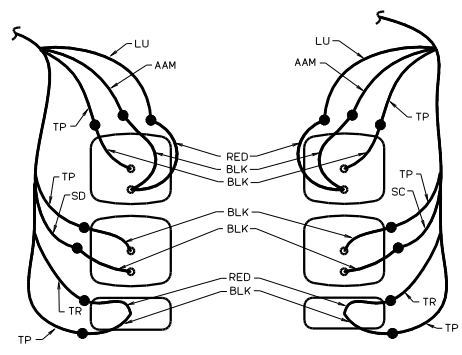
WIRE ASM-CHASSIS

VIEW FA-FA

- (48V) LIGHTS-FLUORESCENT
- (48M) LIGHTS-INCANDESCENT
- (265) CODES/STANDARDS-CSA/CWVSS
- (1B1) CODES/STANDARDS USA
- (1B1) (265) (48M) 00 P36L

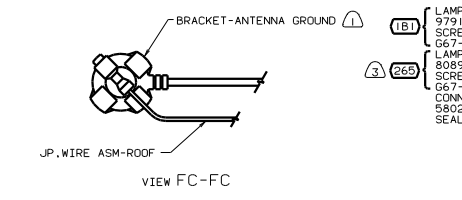
FOR ELECTRICAL TORQUE SPECIFICATIONS SEE DWG NO. 128783-01-000	(X-X)	FOR ELECTRICAL CALLOUTS SEE DWG NO. 121339-01-000
--	-------	---

NOTES:  
 ⚠ LAMPS TO BE MOUNTED WITH SWITCH OUTBOARD AND 75 ±20 FROM EDGE OF FLOOR.



VIEW FE-FE

VIEW FD-FD



VIEW FC-FC

- LAMP-MARKER, LENS, RED 133055-01-000 (5)
- LAMP-MARKER, BASE, WHITE 133055-03-000 (5)
- BULB 36196-01-000 (5)

- WIRE ASM-BACKWALL, FL 132673-02-000

- LIGHT ASM-STOP/TURN/TAIL, RED 133054-03-000 (2)
- SCREW G11-08-12U (EXT) (4)

- LIGHT ASM-TURN/AMBER 133054-04-000 (2)
- SCREW G11-08-12U (EXT) (4)

- LAMP ASM-BACKUP 106688-01-000 (2)
- BULB 37934-01-000 (2)
- SCREW G39-08-16U (EXT) (4)

- LAMP-LICENSE 87201-01-000
- SCREW G11-06-12U (EXT) (2)

- LAMP-BRAKE, CENTER 121950-01-000
- SCREW (SUPPLIED W/LAMP)

- (5) TO TRAILER PLUG
- (4) CONNECTOR-PLUG, TRAILER (113589-01-000) TO BE SUPPLIED IN COACH WITH (240)
- (4) TAPE BRANCH BACK ALONG WIRE ASM WITH TAPE 8363-01-000.
- (3) INSTALL WITH WIRES TOWARD ROOF.
- (2) FASTEN TO VENT.
- (1) WRAP BRACKET LEGS AROUND ANTENNA BASE.

NOTES:

- (181) LAMP-PORCH SCREW 97917-01-CHT(2)
- G67-10-12U(EXT)(8)
- (265) LAMP-PORCH SCREW 8089-02-000(2)
- G67-06-10U(EXT)(4)
- CONNECTOR 58028-01-000(4)
- SEAL

- (290) PANEL-SOLAR 10 WATT 115804-01-000
- SCREW G11-08-16U(4)
- (SEE DETAIL FA)

(193) ANT-2

(480) DM-1

WIRE ASM-CLEARANCE LAMPS 126486-03-000

2 PIN HOUSING TO WIRE ASM-TP, MAIN

- LAMP-MARKER, LENS, AMBER 133055-02-000 (5)
- LAMP-MARKER, BASE, WHITE 133055-03-000 (5)
- BULB 36196-01-000 (5)

FC  
FC

- LAMP-MARKER, LENS, AMBER 111102-02-000 (2)
- LAMP-MARKER, BASE, WHITE 111102-01-000 (2)
- SCREW G11-08-12U(EXT) (4)

- LAMP 97917-01-CHT (181)
- SCREW G67-10-12U (EXT) (4)
- LAMP 8089-02-000 (265)
- SCREW G67-06-10T (EXT) (2)
- CONNECTOR 58028-01-000 (2)
- SEAL

REFRIGERATOR VENT

- LAMP-MARKER, LENS, AMBER 111102-02-000 (2)
- LAMP-MARKER, BASE, WHITE 111102-01-000 (2)
- SCREW G11-08-12U(EXT) (4)

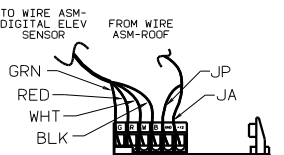
- ANTENNA-RADIO 90944-01-000
- EXTENDER-SHAFT, ANTENNA 109889-04-000
- BRACKET-ANTENNA GROUND 109847-01-000
- SEAL
- CABLE EXT 77069-02-000(3)

(76C) (105)

SOLAR PANEL

VIEW FA-FA

- (240) TRAILER HITCH
- (105) ENTERTAINMENT CENTR/EXT W/CD
- (76C) ENTERTAINMENT CTR/EXT CASSETTE
- (290) SOLAR PANEL-10 WATT
- (265) CODES/STANDARDS-CSA/CMVSS
- (181) CODES/STANDARDS USA



DETAIL FB (480)

FOR ELECTRICAL TORQUE SPECIFICATIONS SEE DWG NO. 128783-01-000

FOR ELECTRICAL CALLOUTS SEE DWG NO. 121339-01-000

X-X