



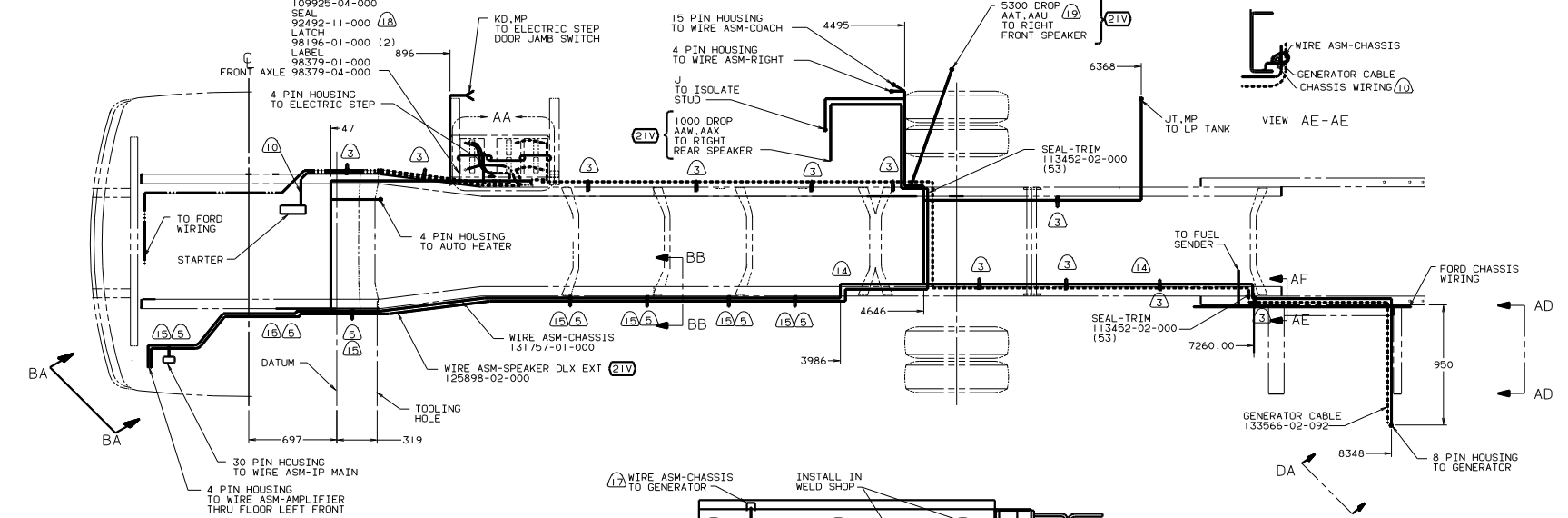
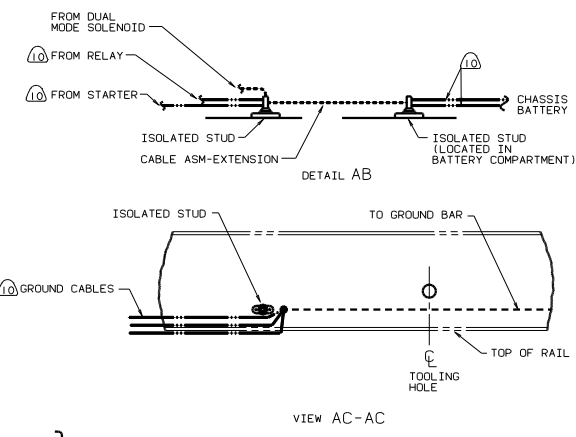
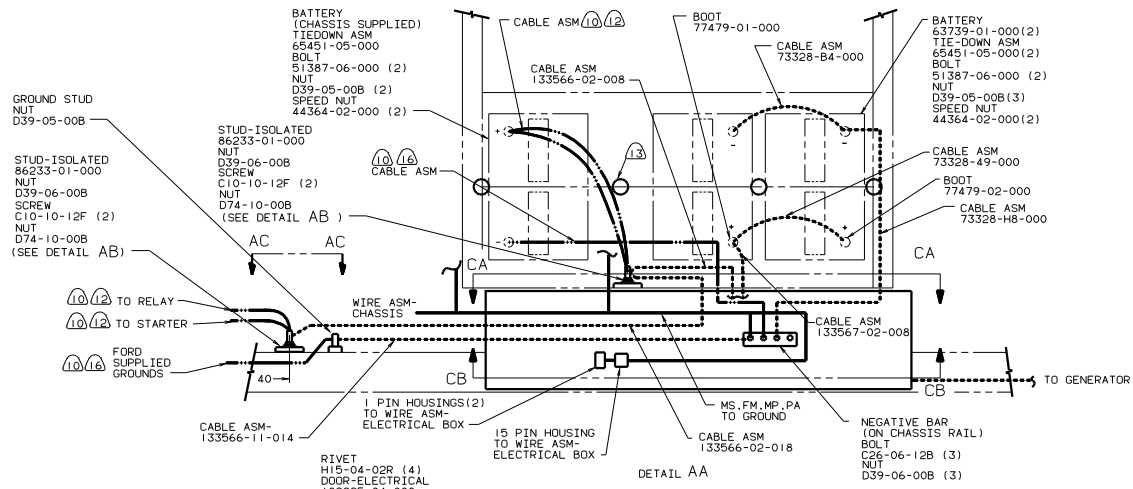
DANGER

Danger of electrical shock, burns or death. Always remove all power sources before attempting any repair, service or diagnostic work. Power can be present from shore power, generator, inverter or battery. All power sources must be disabled and secured before performing any service.



CAUTION

If you lack the skills, tools or equipment to perform diagnostic or repair work leave such work to an authorized Winnebago Industries dealer or other qualified shop.



- (12) CUT 14GA WIRE, 6 & 4GA CABLES 500 MM FROM BATTERY TERMINAL, ADD TERMINAL 8331-01-000(2) TO 4GA CABLES AND TERMINAL 8350-01-000(2) TO 14GA WIRES & 6GA CABLES. CONNECT TERMINALS TO ISOLATED STUDS AS SHOWN IN DETAIL AB
 - (11) USE TWO EXTENSIONS WHEN CHASSIS IS STRETCHED FROM 208" TO 228"
 - (10) SUPPLIED WITH CHASSIS.
 - (9) SEE WIRING INSTL-FRONT END FOR WIRING CONNECTIONS.
 - (8) COVER WITH CONDUIT-41953-10-000 & 41953-11-000 AS REQUIRED.
 - (7) DISCONNECT EXISTING CHASSIS WIRE ASM NEAR TRANSMISSION AND INSERT WIRE ASM-FD CHASSIS EXT
 - (6) ROUT WIRES & CABLE INSIDE CHASSIS RAIL AT THIS POINT AND TO THE REAR.
 - (5) CLAMP 10497-03-000, SCREW G39-08-12B.
 - (4) CLAMP 83609-01-000, SCREW G39-08-12B.
 - (3) CLAMP 83610-01-000, SCREW G39-08-12B.
2. SECURE CONDUIT 41953-01-000, 41953-02-000 AND 41953-03-000 OVER ALL WIRES IN CONTACT WITH SHARP EDGES.
1. LEGEND: — WINNEBAGO, CABLE, — CHASSIS SUPPLIED.

- (17) CABLE ASM-GENERATOR TO GENERATOR STARTER TERMINAL
- (19) WIRES TO BE ROUTED ABOVE SUB-FLOOR TO FRONT SPEAKER.
- (18) PLACE AROUND ENTIRE PERIMETER OF DOOR WITH SEAM AT TOP.
- (17) SECURE SO WIRES DO NOT CONTACT EXHAUST.
- (16) TRIM CABLE TO 500MM. ADD TERMINALS 8348-01-000(2).
- (15) WITH SLIDEOUT ROOM USE CLAMP 83610-03-000 & G39-08-12B
- (14) ROUTE WIRES & CABLE OVER SPRING HANGER & ON TOP OF CHASSIS RAIL AT THIS POINT.
- (13) USE TWO NUTS HERE TO ACCOUNT FOR BATTERY HEIGHT DIFFERENCE.

FOR ELECTRICAL TORQUE SPECIFICATIONS SEE DWG NO. 128783-01-000

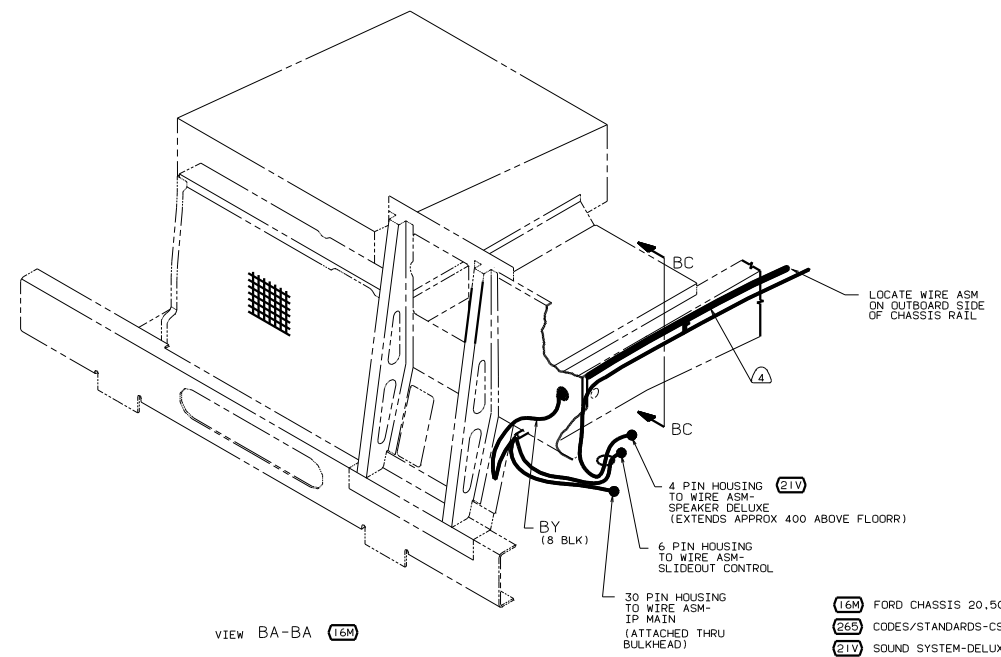
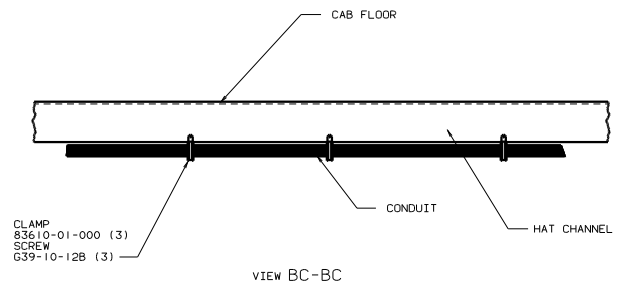
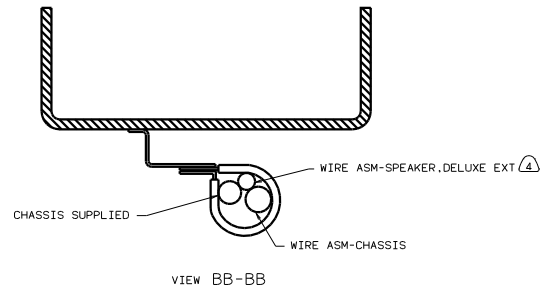
- (265) CODES/STANDARDS-CSA/CMVSS
- (21V) SOUND SYSTEM DELUXE
- (16M) FORD CHASSIS 20,500#/V10 ENG
- (1B1) CODES/STANDARDS-USA

OF IN	DATE	UNSPECIFIED TOLERANCES ARE:	MATERIAL
CHRP	DATE	ONE-PLACE (R.A.)	
DYE	DATE	TWO-PLACE (R.A.)	
DVE	DATE	MILL	
DATE	DATE	THRU W/OLE PROJECTION	

WINNEBAGO 00 G35B

TITLE: WIRING INSTL-CHASSIS

REF 131737-B 131755

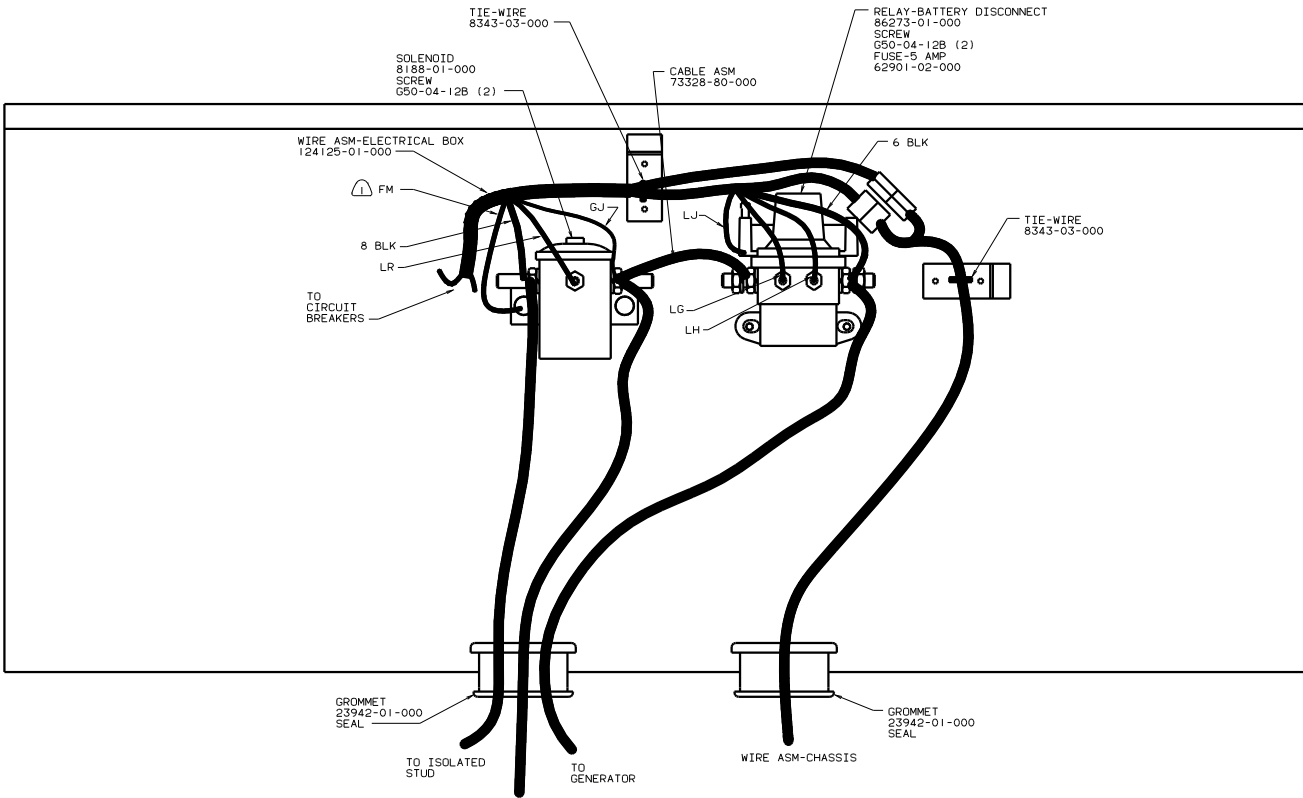


- ⁴ COVER WITH CONDUIT 41953-10-000 AND 41953-11-000 AS REQUIRED.
3. CONNECT CABLES TO COACH SIDE OF BATTERY DISCONNECT WHEN BATTERY DISCONNECT IS USED.
2. FOR ADDITIONAL INFORMATION SEE WIRING INSTLATION FRONT END.
1. CUT OFF EXCESS END OF WIRE TIE.

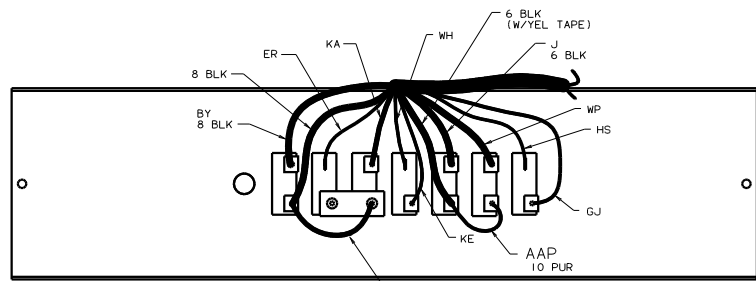
FOR ELECTRICAL TORQUE SPECIFICATIONS SEE DWG NO. 128783-01-000

16M	FORD CHASSIS 20,500#/V10 ENG
265	CODES/STANDARDS-CSA/CMVSS
21V	SOUND SYSTEM-DELUXE
181	CODES STANDARDS/USA
00 G35B	181 265 21V

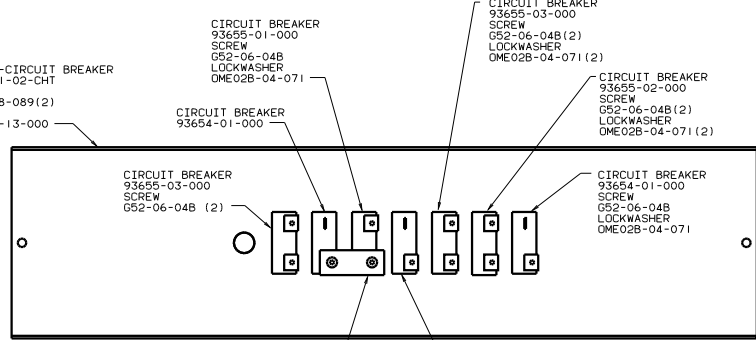
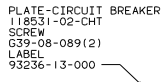
TITLE: WIRING INSTL-CHASSIS	
30 100 SCALE 20000	1:1
SHEET 2 OF 4	DWG NO 131755



VIEW CA-CA



VIEW CB-CB (WIRING)



VIEW CB-CB (HARDWARE)

NOTES: SECURE WITH SOLENOID MOUNTING SCREW.

FOR ELECTRICAL TORQUE SPECIFICATIONS SEE DWG NO. 128783-01-000

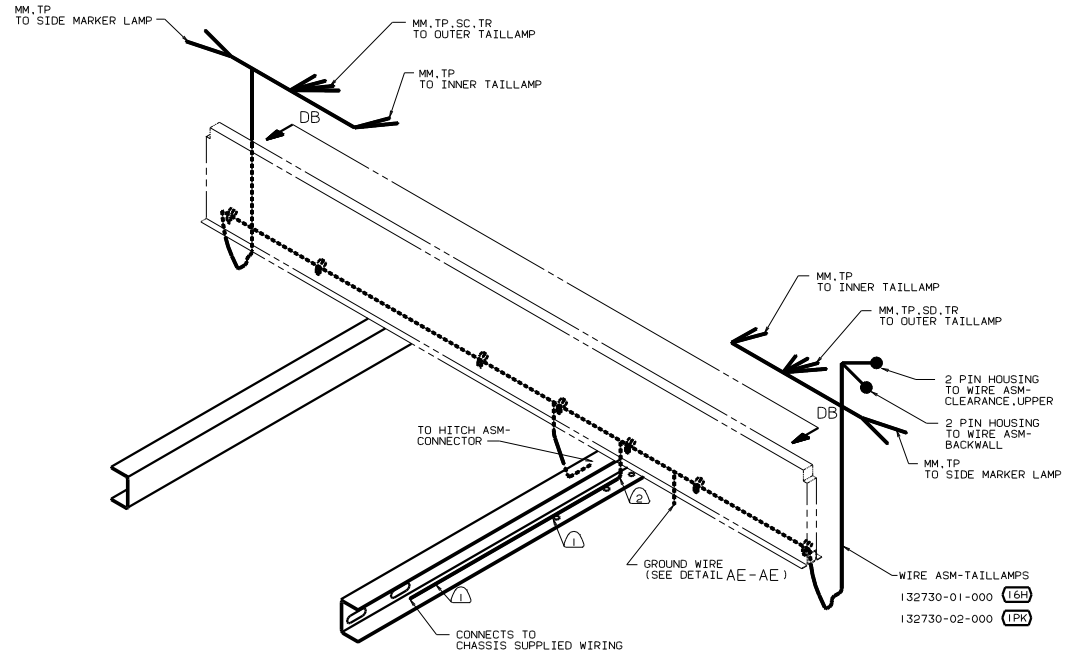
265 CODES/STANDARDS-CSA/CMVSS

181 CODES STANDARDS/USA

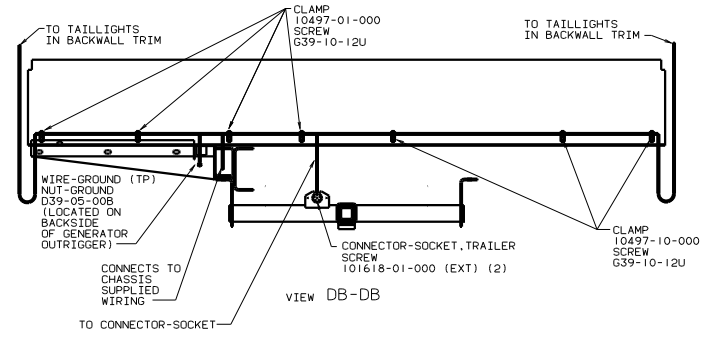
00 G35B 181 265

TITLE: WIRING INSTL-CHASSIS

SHEET 3 OF 4



VIEW DA-DA



VIEW DB-DB

- NOTES:
- ② WIRE TO BE ROUTED ON BACK SIDE OF RISER.
 - ① WIRE TIE 8343-02. FASTEN TO FRAME AT LEAST ONCE EVERY 600MM.

FOR ELECTRICAL TORQUE SPECIFICATIONS SEE DWG NO. 128783-01-000

00 G35B	
TITLE: WIRING INSTL-CHASSIS	
NO. OF SHEETS	TOTAL SHEETS
4	4
DWG NO. 131755	