



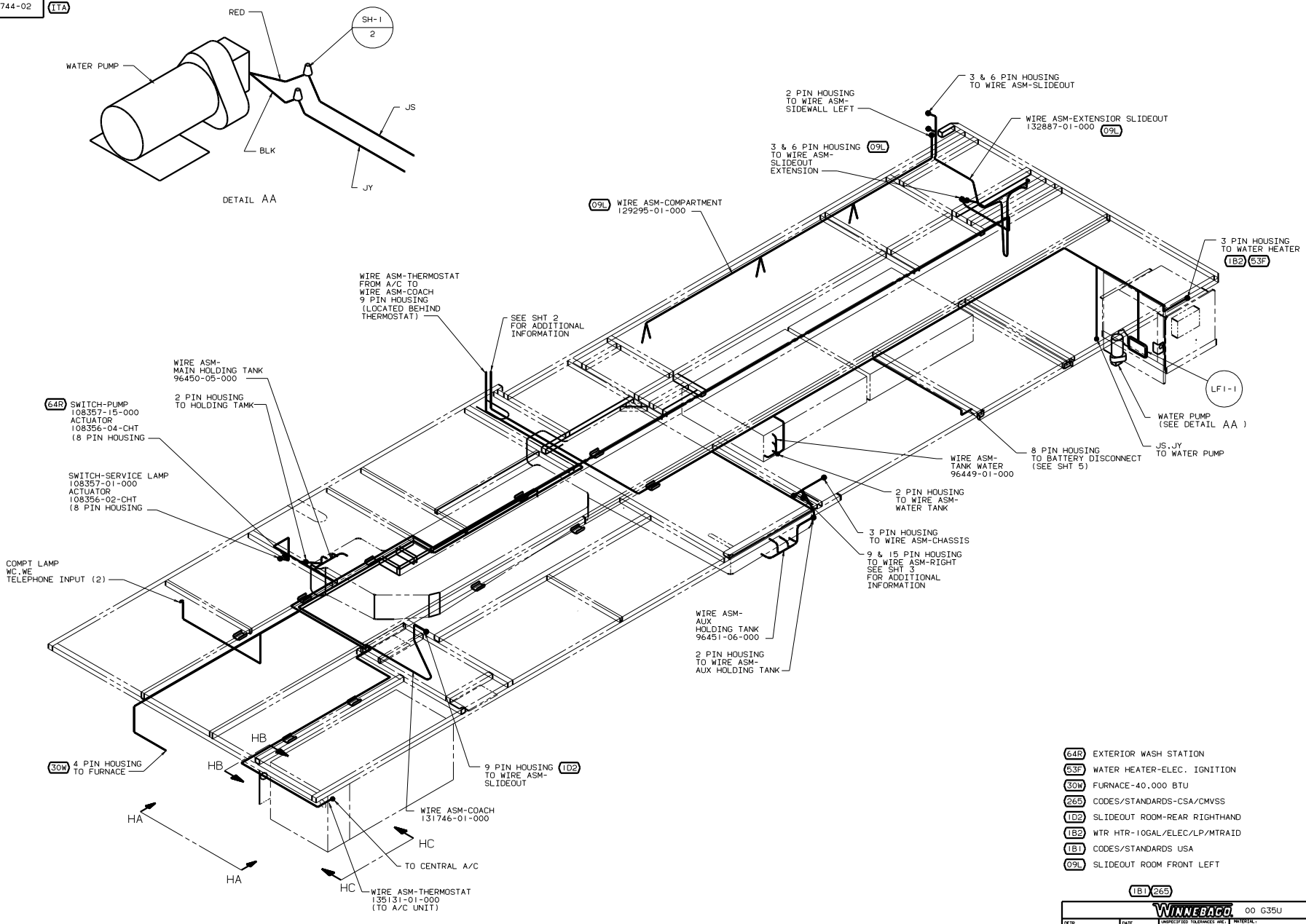
DANGER

Danger of electrical shock, burns or death. Always remove all power sources before attempting any repair, service or diagnostic work. Power can be present from shore power, generator, inverter or battery. All power sources must be disabled and secured before performing any service.



CAUTION

If you lack the skills, tools or equipment to perform diagnostic or repair work leave such work to an authorized Winnebago Industries dealer or other qualified shop.



2. SEE WIRING DIAGRAM-BODY FOR ADDITIONAL INFORMATION.

1. ALL WIRE TO BE CLAMPED WITH CLAMP 10495-01-000 OR WIRE TIE 8343-02-000 EVERY 600 UNLESS OTHERWISE SPECIFIED.

NOTES:

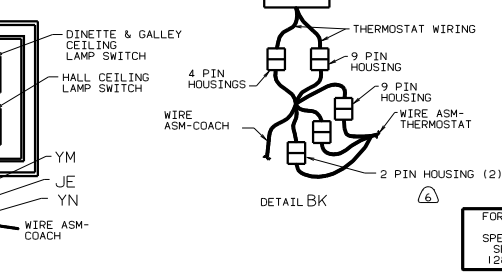
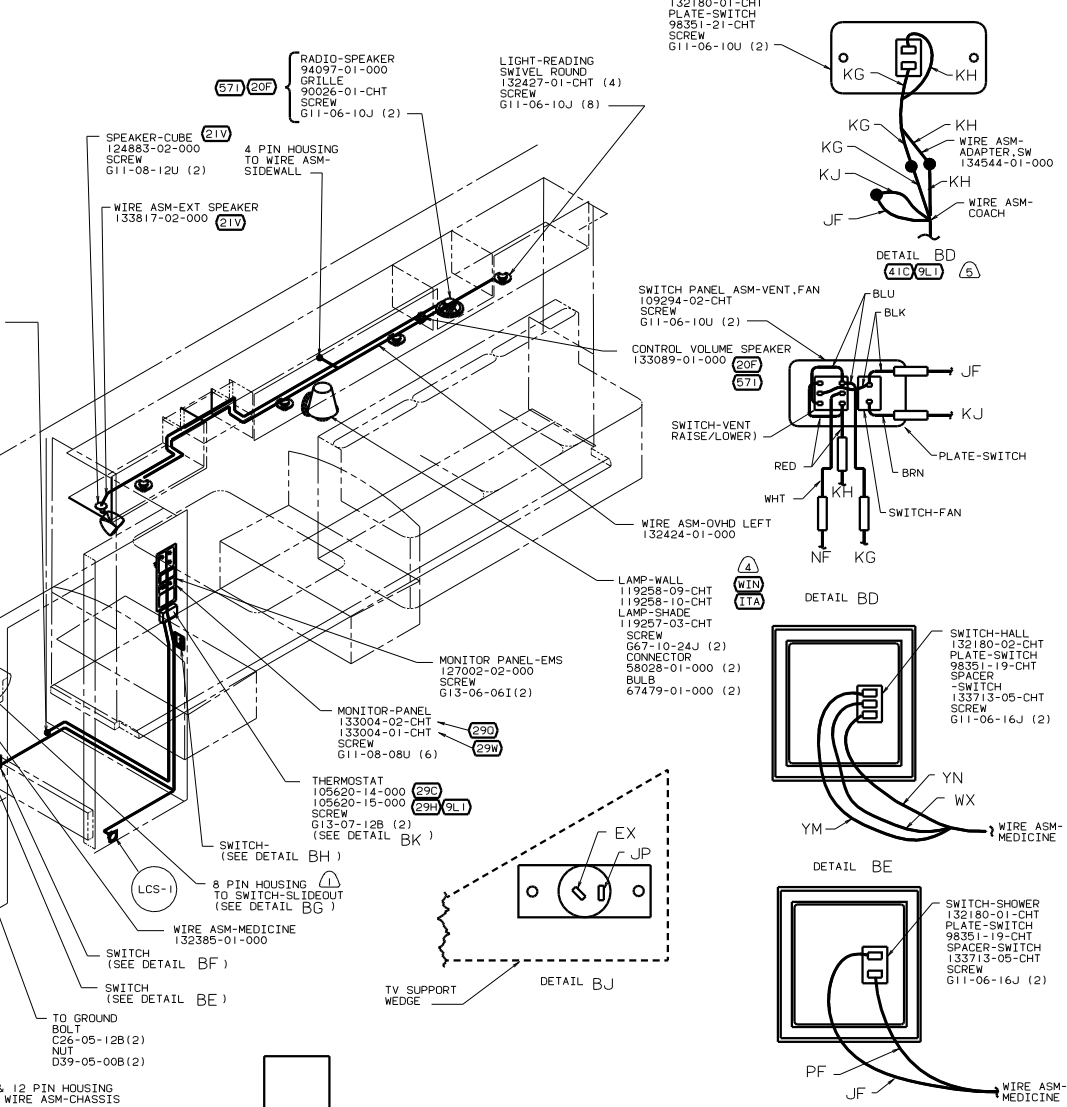
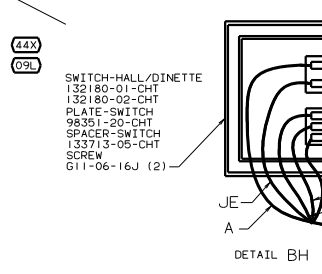
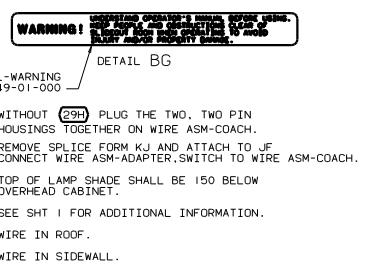
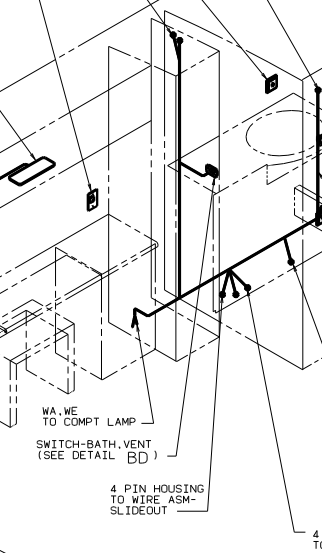
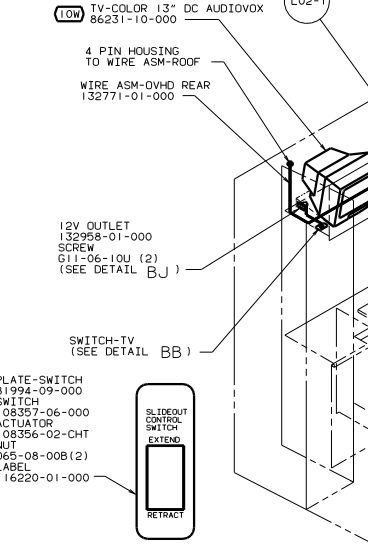
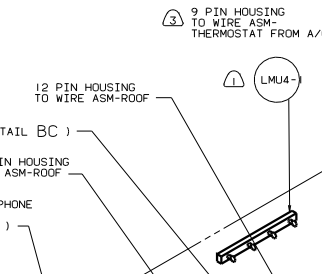
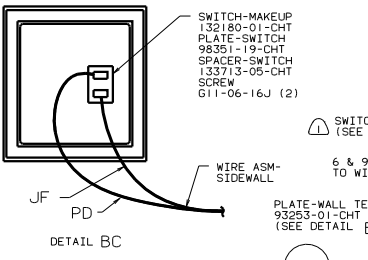
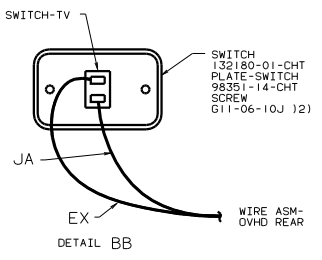
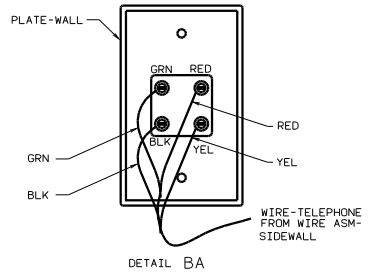
- (64R) EXTERIOR WASH STATION
- (63F) WATER HEATER-ELEC. IGNITION
- (30W) FURNACE-40,000 BTU
- (265) CODES/STANDARDS-CSA/CMVSS
- (1D2) SLIDEOUT ROOM-REAR RIGHTHAND
- (1B2) WTR HTR-10GAL/ELEC/LP/MTRAIID
- (1B1) CODES/STANDARDS USA
- (09L) SLIDEOUT ROOM FRONT LEFT

(1B1) 265

FOR ELECTRICAL TORQUE SPECIFICATIONS SEE DWG NO. 128783-01-000

FOR ELECTRICAL CALLOUTS SEE DWG NO. 121339-01-000

WINNEBAGO		00 G35U
OF IN	DATE	UNSPECIFIED TOLERANCES ARE:
CHP	DATE	WHOLE DIM (IN)
FPC	DATE	ONE-PLACE (IN.XI)
FVE	DATE	TWO-PLACE (IN.XI.XI)
COM	DATE	MILL
DATE	DATE	THIRD WHOLE INCREMENT
DRAWN BY: _____ TITLE: WIRING INSTL-BODY, 12V (RF)		CHECKED BY: _____
WIRE SCALE: NONE		DIM SCALE: NONE
ALL DIMENSIONS ARE IN MILLIMETERS		SHEET 1 OF 3
DWG NO. 131744		1 E



WARNING! DISCONNECT BATTERY NEGATIVE TERMINAL BEFORE WORKING ON ELECTRICAL SYSTEM. ALWAYS USE PROPER WIRING TECHNIQUES TO AVOID SHORTS AND FIRE HAZARD.

6 WITHOUT (29H) PLUG THE TWO, TWO PIN HOUSINGS TOGETHER ON WIRE ASM-COACH.

5 REMOVE SPLICE FORM KJ AND ATTACH TO JF CONNECT WIRE ASM-ADAPTER, SWITCH TO WIRE ASM-COACH.

4 TOP OF LAMP SHADE SHALL BE 150 BELOW OVERHEAD CABINET.

3 SEE SHT 1 FOR ADDITIONAL INFORMATION.

2 WIRE IN ROOF.

1 WIRE IN SIDEWALL.

- (41C) VENTL(2) PWR VNT/INSULATED
- (44X) BED-QUEEN SIDEWALL
- (29H) HEAT PUMP-A/C CENTRAL
- (29C) A/C CENTRAL
- (671) RADIO SPEAKERS
- (29W) SOLAR PANEL/BATTERY CHRG W/O WINNEBAGO ONLY
- (1TA) ITASCA ONLY
- (20F) DELUXE SOUND SYSTEM-WITHOUT
- (26S) CODES/STANDARDS-CSA/CMVSS
- (21V) SOUND SYSTEM DELUXE
- (10W) TV-REAR
- (1E3) ENERGY MANAGEMENT SYSTEM
- (1B1) CODES/STANDARDS USA
- (09L) SLIDEOUT ROOM FRONT LEFT

FOR ELECTRICAL TORQUE SPECIFICATIONS SEE DWG NO 128763-01-000

FOR ELECTRICAL CALLOUTS SEE DWG NO 121339-01-000

00 G35U (1B1) (26S)

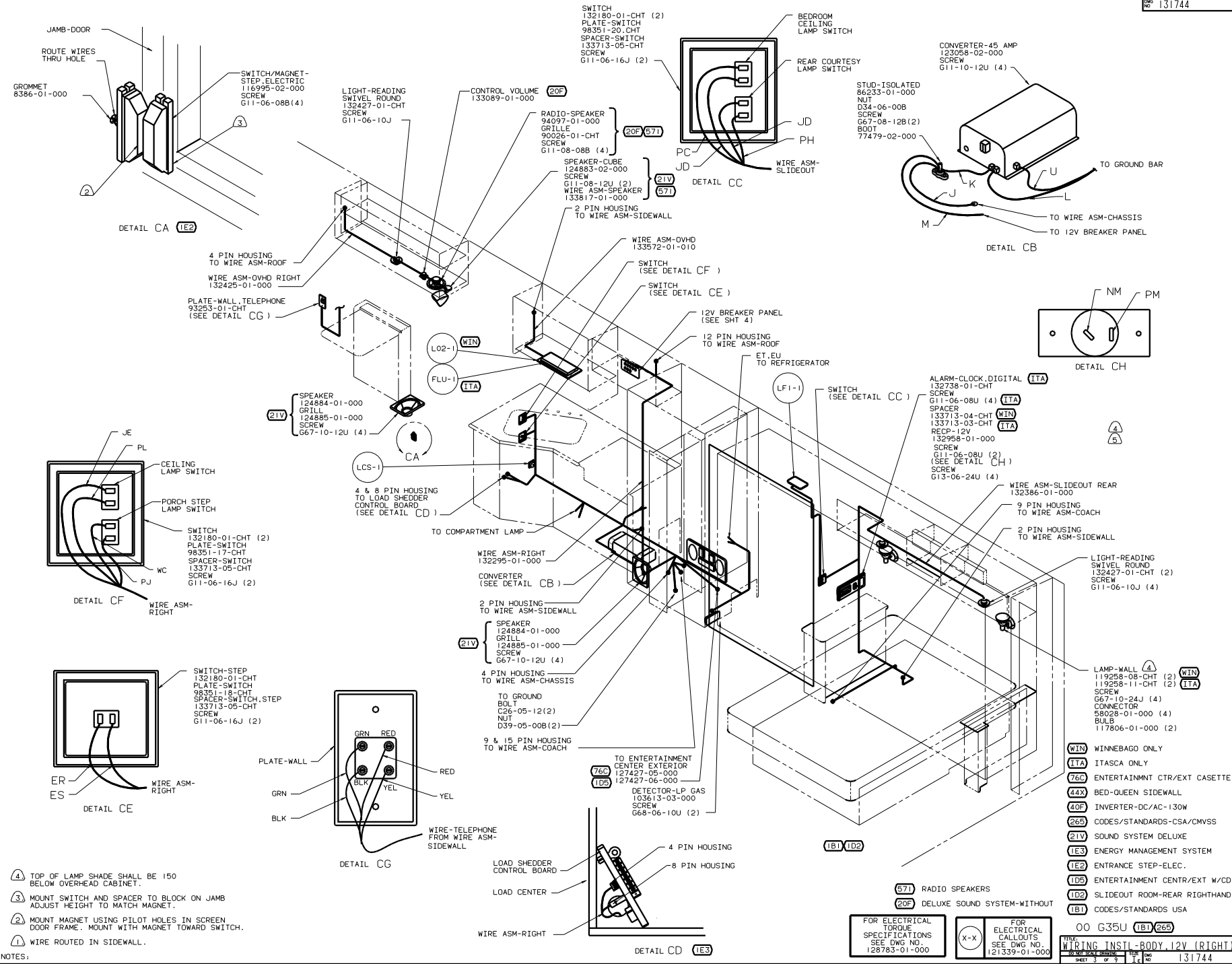
WIRING INSTL-BODY, 12V(LEFT)

DATE: 10/24/84

BY: J.E.

CHK: J.E.

131744



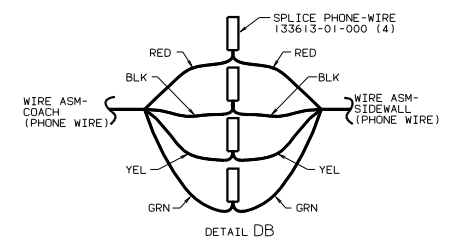
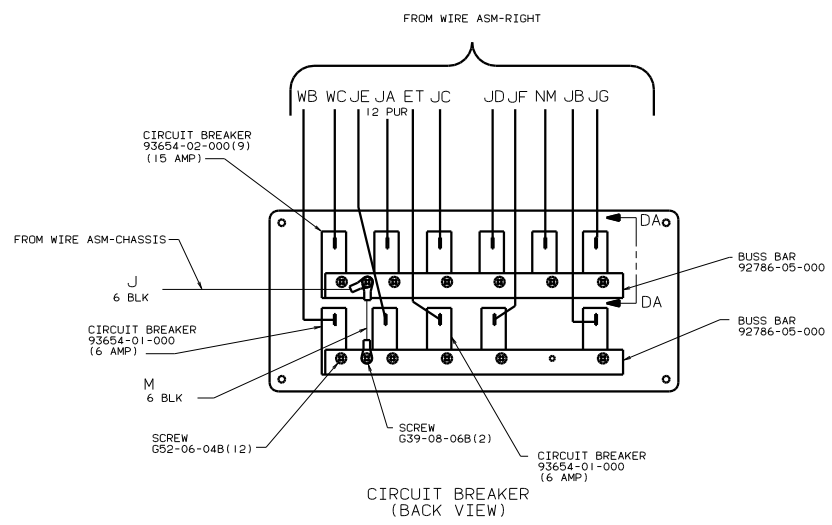
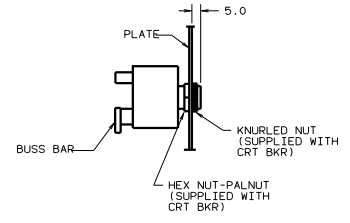
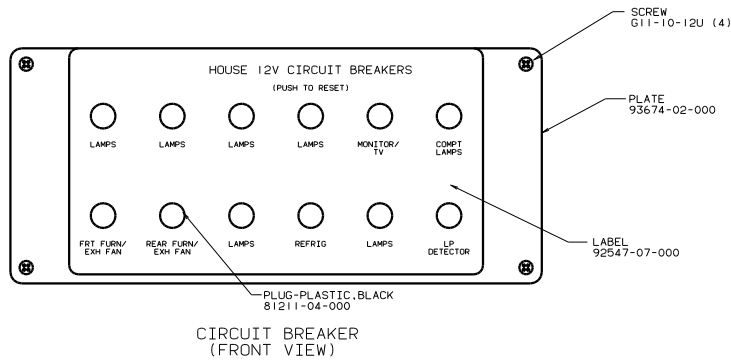
- NOTES:
- ④ TOP OF LAMP SHADE SHALL BE 150 BELOW OVERHEAD CABINET.
 - ③ MOUNT SWITCH AND SPACER TO BLOCK ON JAMB ADJUST HEIGHT TO MATCH MAGNET.
 - ② MOUNT MAGNET USING PILOT HOLES IN SCREEN DOOR FRAME. MOUNT WITH MAGNET TOWARD SWITCH.
 - ① WIRE ROUTED IN SIDEWALL.

- (WIN) WINNEBAGO ONLY
- (ITA) ITASCA ONLY
- (76C) ENTERTAINMENT CTR/EXT CASSETTE
- (44X) BED-QUEEN SIDEWALL
- (20P) INVERTER-DC/AC-130W
- (26S) CODES/STANDARDS-CSA/CMVSS
- (21V) SOUND SYSTEM DELUXE
- (IE2) ENERGY MANAGEMENT SYSTEM
- (105) ENTRANCE STEP-ELEC.
- (105) ENTERTAINMENT CTR/EXT W/CD
- (1D2) SLIDEOUT ROOM-REAR RIGHTHAND
- (1B1) CODES/STANDARDS USA

FOR ELECTRICAL TORQUE SPECIFICATIONS SEE DWG NO. 128783-01-000

FOR ELECTRICAL CALLOUTS SEE DWG NO. 121339-01-000

00 G35U (1B1) (26S)
 WIRING INSTL - BODY 12V (RIGHT)
 SHEET 3 OF 9
 131744

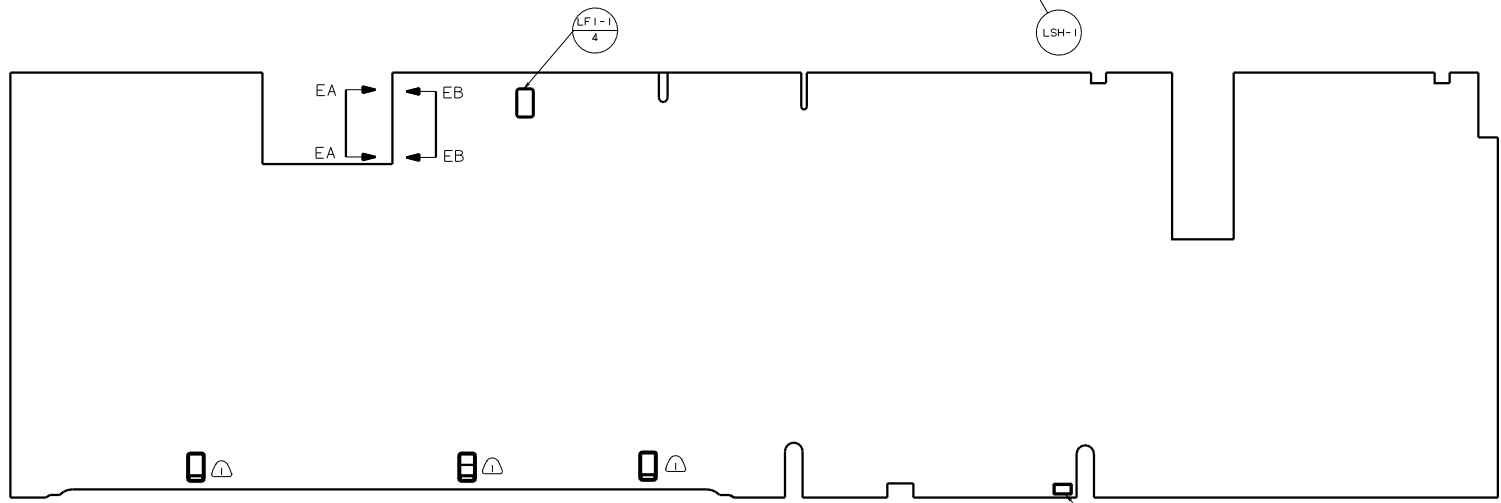
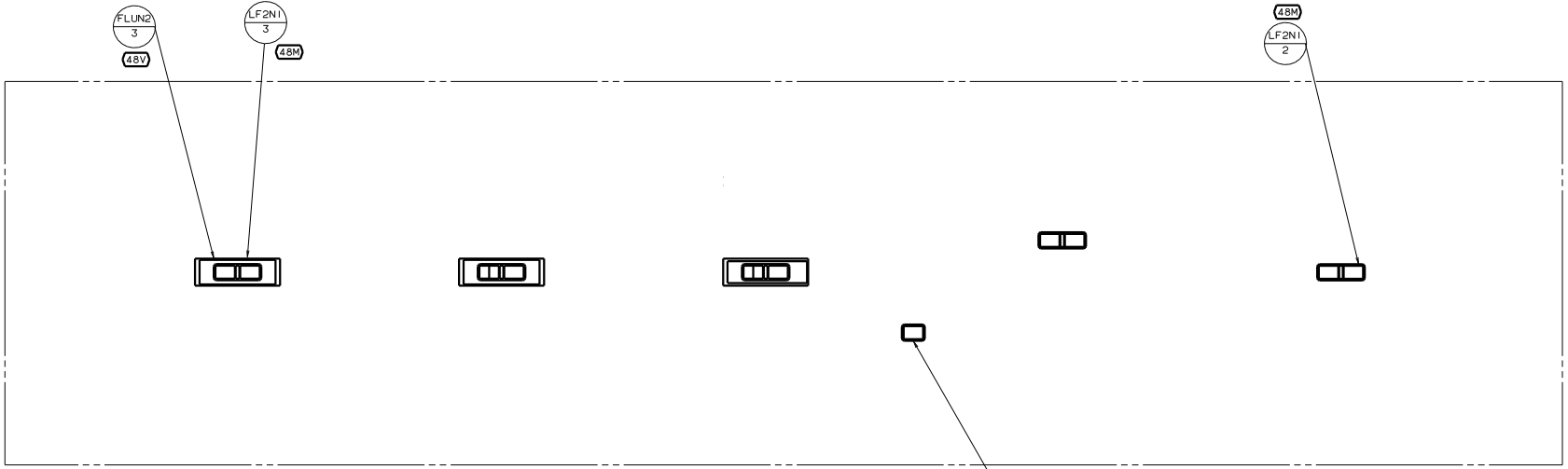


NOTES:

FOR ELECTRICAL TORQUE SPECIFICATIONS SEE DWG NO. 128783-01-000

(265) CODES/STANDARDS-CSA/CMVSS
(181) CODES/STANDARDS USA
00 G35U (181) (265)

TITLE		WIRING INSTL-BODY(12 BP)	
NO	REV	DATE	BY
1	1		
SHEET 4 OF 9		JOB NO 131744	

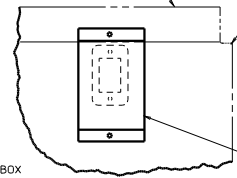
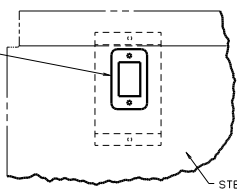


SWITCH-BATTERY DISC
 108357-06-000
 ACTUATOR-SWITCH
 108356-11-CHT
 PLATE-SWITCH
 98351-07-CHT
 SCREW
 G11-06-16U (2)

UPPER FLOOR
 SUPPORT FRAME

STEP BOX
 CHANNEL-HAT
 135167-01-CHT
 SCREW
 G39-10-08U (2)

LAMP
 86280-01-000
 SCREW
 G67-10-12U (4)
 CONNECTOR
 58028-01-000 (2)



- (48V) LIGHTS-FLUORESCENT
- (48M) LIGHTS-INCANDESCENT
- (265) CODES/STANDARDS-CSA/CMVSS
- (1B1) CODES/STANDARDS-USA

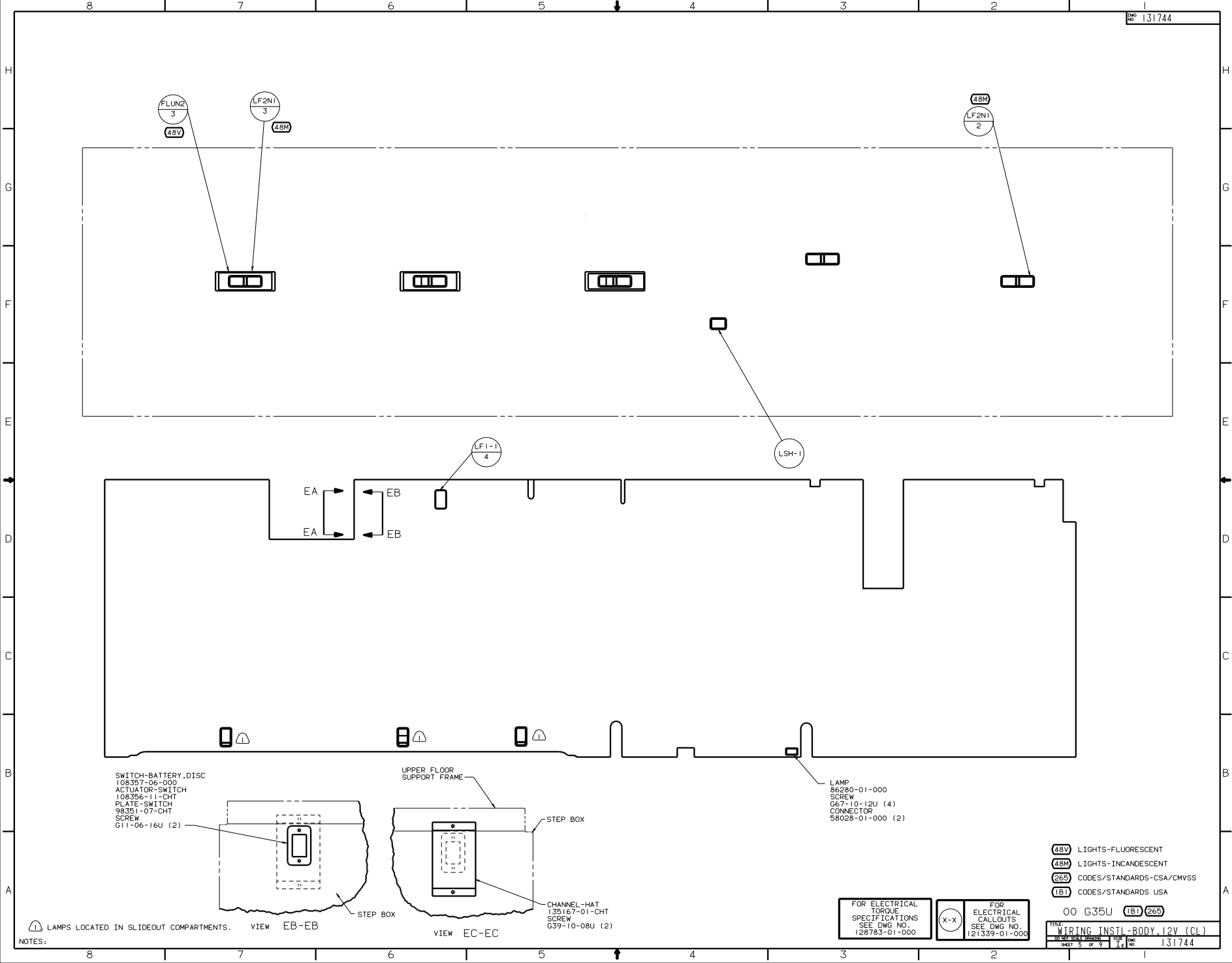
00 G35U (1B1) (265)

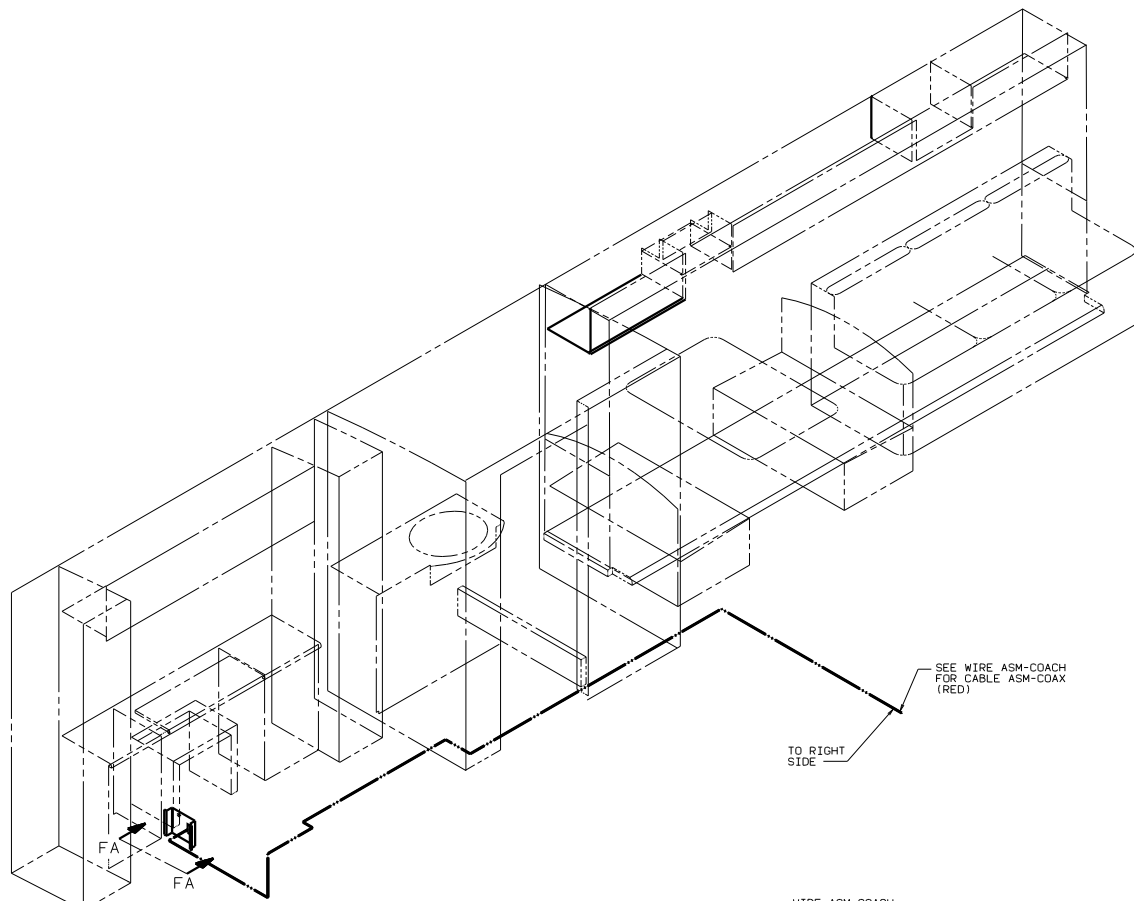
FOR ELECTRICAL
 TORQUE
 SPECIFICATIONS
 SEE DWG NO.
 128783-01-000

(X-X)
 FOR ELECTRICAL
 CALLOUTS
 SEE DWG NO.
 121339-01-000

TITLE: WIRING INSTL-BODY,12V (CL)
 SHEET 5 OF 9
 DWG NO 131744

NOTES:
 (1) LAMPS LOCATED IN SLIDEOUT COMPARTMENTS.





SEE WIRE ASM-COACH
FOR CABLE ASM-COAX
(RED)

TO RIGHT
SIDE

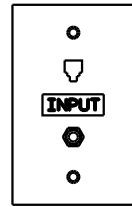
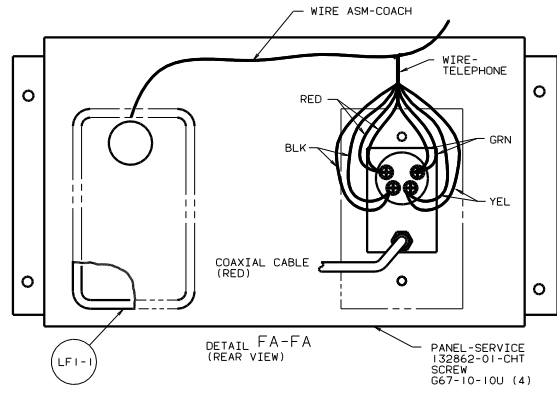


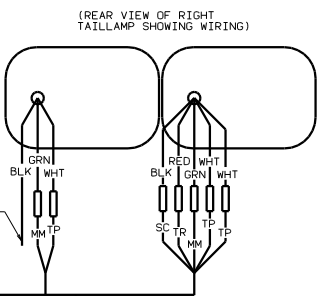
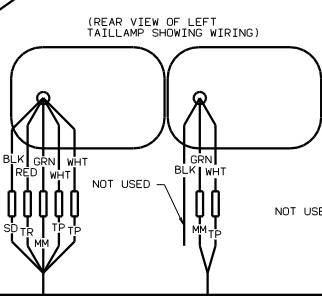
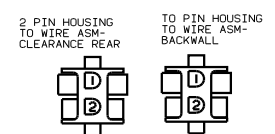
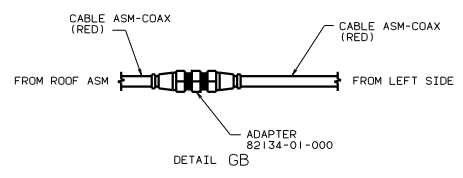
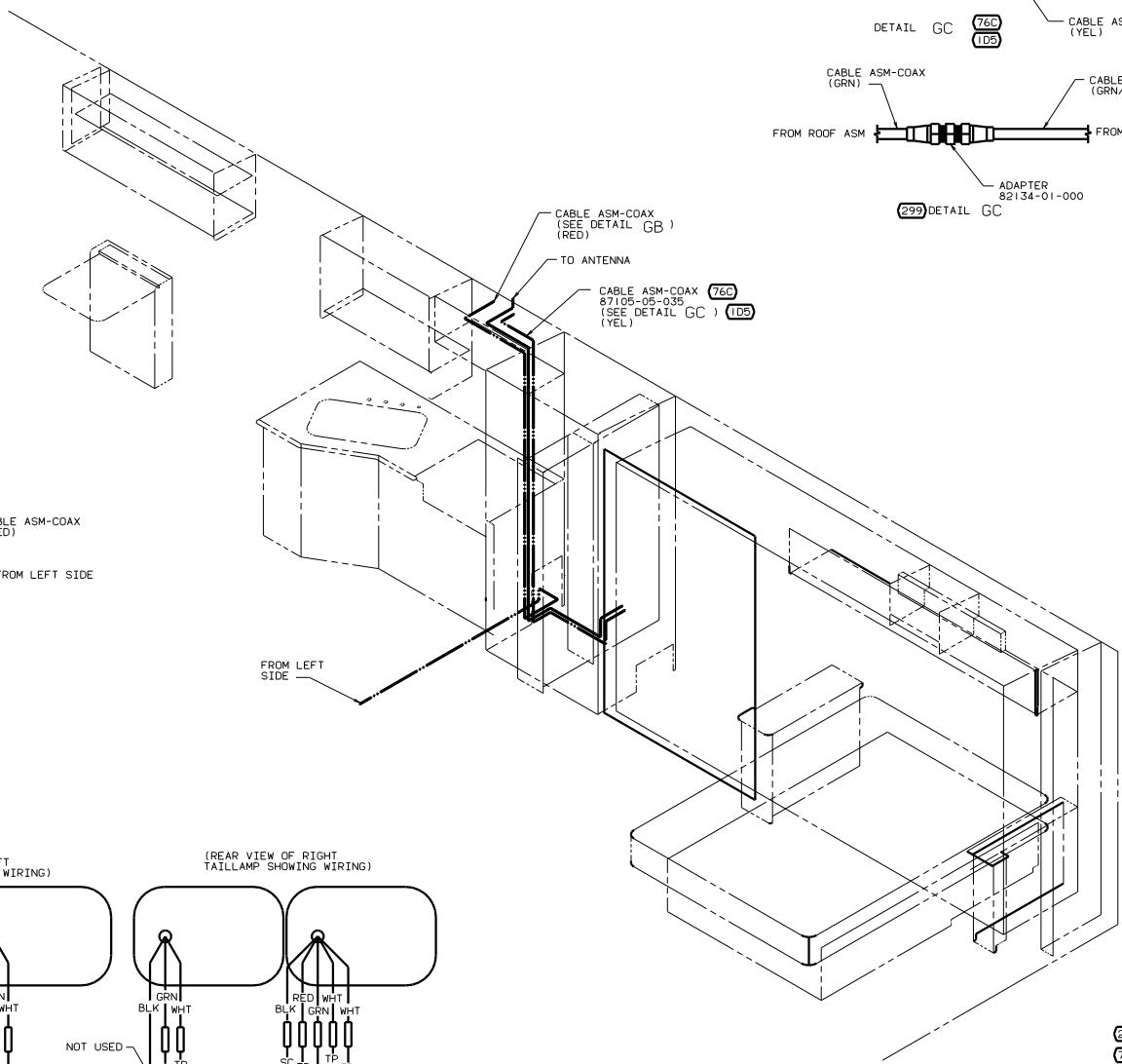
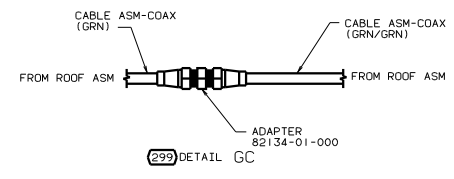
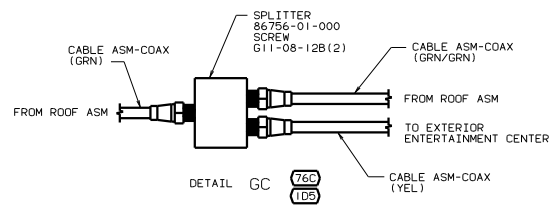
PLATE-WALL, TELEPHONE/COAX
 130686-01-CHT
 LABEL
 87236-01-000
 SCREW
 G39-08-08U (2)

265 CODES/STANDARDS-CSA/CMVSS
 1B1 CODES/STANDARDS USA

00 G35U 1B1 265

X-X FOR ELECTRICAL CALLOUTS SEE DWG NO. 121339-01-000

TITLE		DRAWING	
WIRING INSTL-BODY, 12V (COAX L)		131744	
NO. OF SHEETS	TOTAL SHEETS	SHEET NO.	TOTAL SHEETS
6	9	6	9

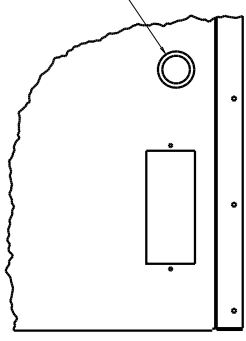


- (299) ENTERTAINMENT CENTER EXT. W/O
- (76C) ENTERTAINMENT CTR/EXT CASSETTE
- (1D5) ENTERTAINMENT CTR/EXT W/CD
- (265) CODES/STANDARDS-CSA/CMVSS
- (1B1) CODES/STANDARDS USA

FOR ELECTRICAL CALLOUTS SEE DWG NO. 121339-01-000

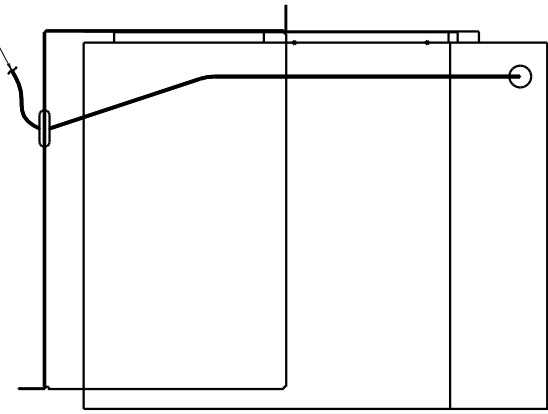
GROMMET
23942-01-000

WIRE ASM-THERMOSTAT
(COIL UP AND TIE EXCESS
WIRE IN BASEMENT AREA
WITH WIRE TIE 8343-02-000)



VIEW HB-HB

TO THERMOSTAT



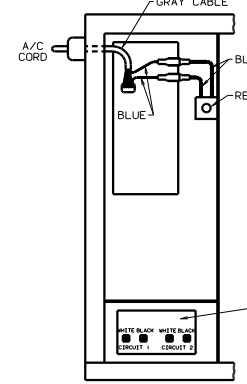
VIEW HA-HA

GRAY CABLE

A/C CORD

BLUE (2) (29H) (9L1)

RESET



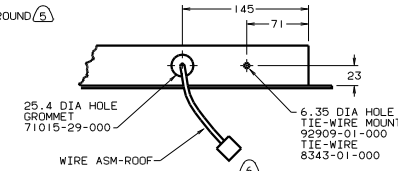
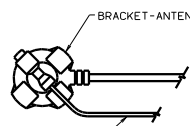
VIEW HC-HC

WIRE BLACK WIRE BLACK
CIRCUIT 1 CIRCUIT 2

- NOTES:
- Ⓐ CONNECT BLUE WIRES FROM RESET TO THE BLUE WIRES WITH SPADE TERMINALS ON A/C CORD WITH (29H) & (9L1) FEATURE.
 - Ⓐ SEE WIRING INSTL-BODY.110V FOR ADDITIONAL INFORMATION.

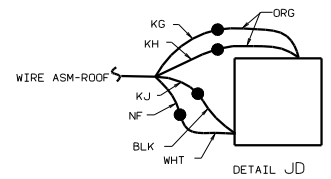
- (9L1) HOME COMFORT PLUS PACKAGE
- (29H) HEAT PUMP-A/C CENTRAL
- (265) CODES/STANDARDS-CSA/CMVSS
- (1B1) CODES/STANDARDS USA

00 G35U (1B1) (265)



VIEW JA-JA

VIEW JB-JB



DETAIL JD

- (1B1) LAMP 97917-01-CHT
- (1B1) SCREW 667-10-12U(EXT) (4)
- (265) LAMP 8089-02-000
- (265) SCREW 667-06-10T(EXT) (2)
- (265) CONNECTOR 58028-01-000 (2)
- SEAL

FOR WIRING (SEE DETAIL JD)

WIRE ASM-CLEARANCE LAMPS,RR 132729-01-000

LAMP-CLEARANCE, RED 133055-01-000 (5)
SCREW 639-08-16T (10)
BASE 133055-03-000 (5)
BULB 36196-01-000 (5)

LAMP ASM-BRAKE 121950-01-000
SCREW (SUPPLIED W/LAMP)

LAMP 87201-01-000
SCREW G11-06-12U (EXT) (2)

LAMP-MARKER, BASE 111102-01-000 (2)
LAMP-MARKER, LENS, RED 111102-03-000 (2)
SCREW 639-08-12U (EXT) (4)

(240) SCREW 101618-01-000(EXT) (2)

LIGHT ASM-STOP/TURN/TAILO, RED 115632-03-CHT (2)
CONNECTOR 58028-01-000 (2)
SCREW G11-08-12B (8) (EXT)

- (6) FASTEN TO VENT.
- (5) WRAP BRACKET LEGS AROUND ANTENNA BASE.
- (4) CONNECTOR-PLUG, TRAILER (113589-01-000) TO BE SUPPLIED LOOSE IN COACH WITH TRAILER TOW PACKAGE.
- (3) TAPE BRANCH BACK ALONG WIRE ASM WITH TAPE 8363-01-000.
- (2) SEE DWG 76319-01-000 FOR INSTALLATION OF TV ANTENNA.
- (1) INSTALL WITH WIRES TOWARDS ROOF.

- (8) HOUSING TO BE CLAMPED ABOVE TAILLAMP.
- (7) ADD RUBBER BUMPERS TO ROOF UNDER EACH END OF ANTENNA TO PREVENT CONTACT WITH ROOF.

NOTES:

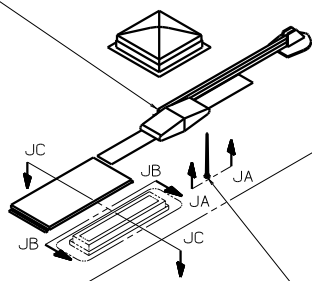
WIRE ASM-CLEARANCE LAMPS 126486-01-000

DM-1 (480)

ANT-2 (193)

LAMP-CLEARANCE AMBER 102520-01-000 (5)
132978-01-000 (5)
SCREW G39-08-16T (10)
GASKET 102541-01-000 (5)
BULBS 36196-01-000 (5)

CONNECTS TO WIRE ASM-IP, MAIN

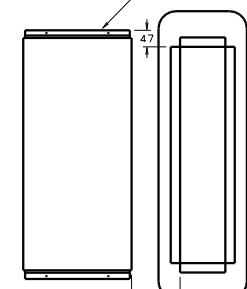


ANTENNA-SHAFT EXTENDER 109889-04-000
BRACKET-ANTENNA GROUND 108847-01-000
ANTENNA 90944-01-000
CABLE-ANTENNA EXTENSION 77069-02-000
SEAL

(76C)
(1D5)

LAMP-MARKER, BASE 111102-01-000 (2)
LAMP-MARKER, LENS, AMBER 111102-02-000 (2)
SCREW G11-08-12U(EXT) (4)

SOLAR PANEL 115504-01-000
SCREW G11-08-16U (4)



VIEW JC-JC

- (WIN) WINNEBAGO ONLY
- (ITA) ITASCA ONLY
- (76C) ENTERTAINMENT CTR/EXT CSETTE
- (240) TRAILER HITCH
- (1D5) ENTERTAINMENT CTR-EXT-W/CD
- (193) TV ANTENNA
- (480) SATELLITE DISH
- (290) SOLAR PANEL - 10 WATT
- (265) CODES/STANDARDS-CSA/CMVSS
- (1B1) CODES STANDARDS/USA

00 G35U (1B1) (265)

FOR ELECTRICAL CALLOUTS SEE DWG NO. 121339-01-000

TITLE: WIRING INSTL-BODY(EX L)
DWG NO. 121339-01-000
SHEET 9 OF 9

131744