



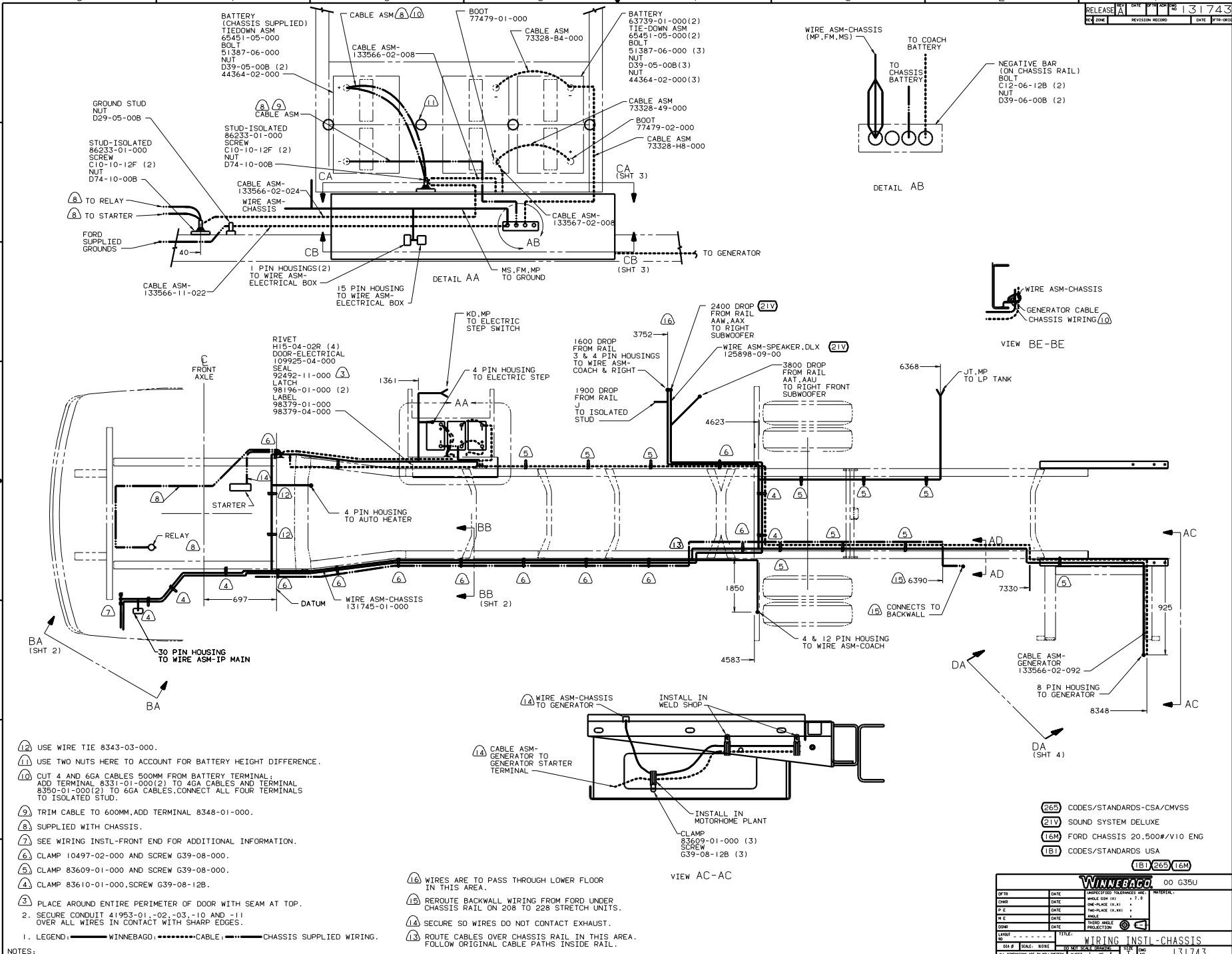
DANGER

Danger of electrical shock, burns or death. Always remove all power sources before attempting any repair, service or diagnostic work. Power can be present from shore power, generator, inverter or battery. All power sources must be disabled and secured before performing any service.



CAUTION

If you lack the skills, tools or equipment to perform diagnostic or repair work leave such work to an authorized Winnebago Industries dealer or other qualified shop.

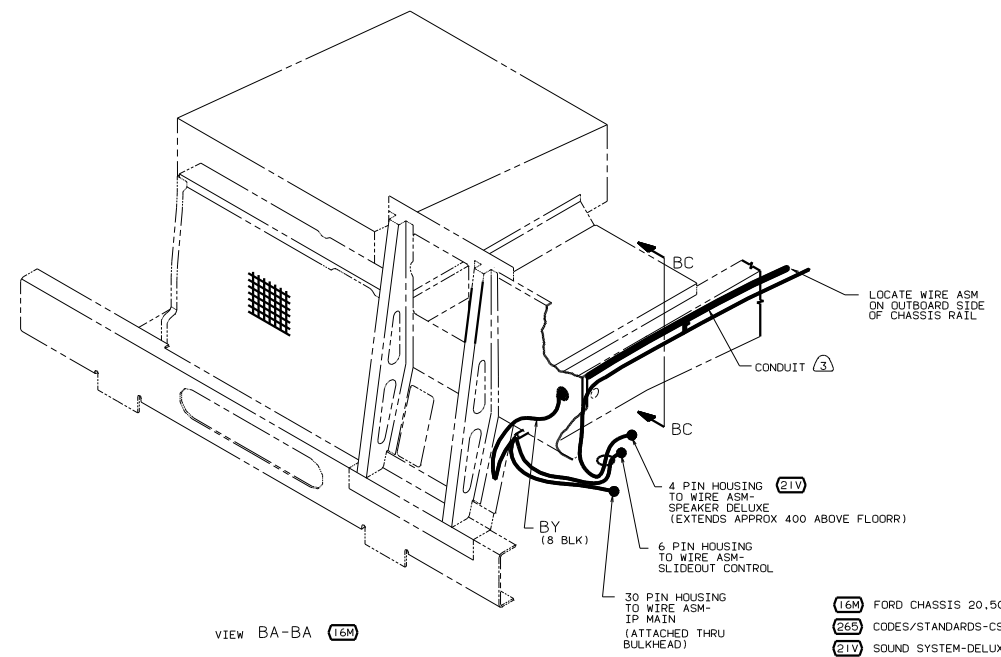
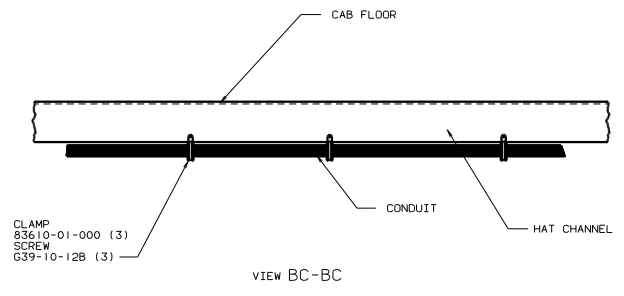
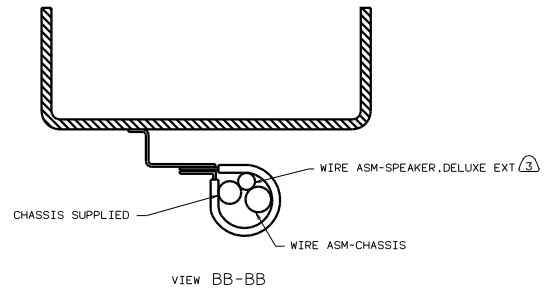


- (12) USE WIRE TIE 8343-03-000.
 (11) USE TWO NUTS HERE TO ACCOUNT FOR BATTERY HEIGHT DIFFERENCE.
 (10) CUT 4 AND 6GA CABLES 500MM FROM BATTERY TERMINAL; ADD TERMINAL 8331-01-000(2) TO 4GA CABLES AND TERMINAL 8360-01-000(2) TO 6GA CABLES. CONNECT ALL FOUR TERMINALS TO ISOLATED STUD.
 (9) TRIM CABLE TO 600MM. ADD TERMINAL 8348-01-000.
 (8) SUPPLIED WITH CHASSIS.
 (7) SEE WIRING INSTL-FRONT END FOR ADDITIONAL INFORMATION.
 (6) CLAMP 10497-02-000 AND SCREW G39-08-000.
 (5) CLAMP 83609-01-000 AND SCREW G39-08-000.
 (4) CLAMP 83610-01-000. SCREW G39-08-12B.
 (3) PLACE AROUND ENTIRE PERIMETER OF DOOR WITH SEAM AT TOP.
 2. SECURE CONDUIT 41953-01-02, -03, -10 AND -11 OVER ALL WIRES IN CONTACT WITH SHARP EDGES.
 1. LEGEND: — WINNEBAGO; - - - - - CABLE; - · - · - CHASSIS SUPPLIED WIRING.

- (16) WIRES ARE TO PASS THROUGH LOWER FLOOR IN THIS AREA.
 (15) REROUTE BACKWALL WIRING FROM FORD UNDER CHASSIS RAIL ON 208 TO 228 STRETCH UNITS.
 (14) SECURE SO WIRES DO NOT CONTACT EXHAUST.
 (13) ROUTE CABLES OVER CHASSIS RAIL IN THIS AREA. FOLLOW ORIGINAL CABLE PATHS INSIDE RAIL.

- (265) CODES/STANDARDS-CSA/CMVSS
 (21V) SOUND SYSTEM DELUXE
 (16M) FORD CHASSIS 20.500#V10 ENG
 (1B1) CODES/STANDARDS USA
 (1B1) (265) (16M)

WINNEBAGO 00 G35U	
OF IN: _____ DATE: _____ CHP: _____ DATE: _____ DATE: _____ DATE: _____ DATE: _____ DATE: _____	UNDESIGNED TOLERANCES ARE: _____ MATERIAL: _____ WELD DIM (1) = 1:1 HOLE-PLATE (1:2) HOLE-PLATE (1:100) HOLE-PLATE (1:100) HOLE-PLATE (1:100) HOLE-PLATE (1:100)
DRAWN BY: _____ CHECKED BY: _____ DATE: _____ DATE: _____ DATE: _____	TITLE: WIRING INSTL-CHASSIS SHEET 1 OF 4 131743

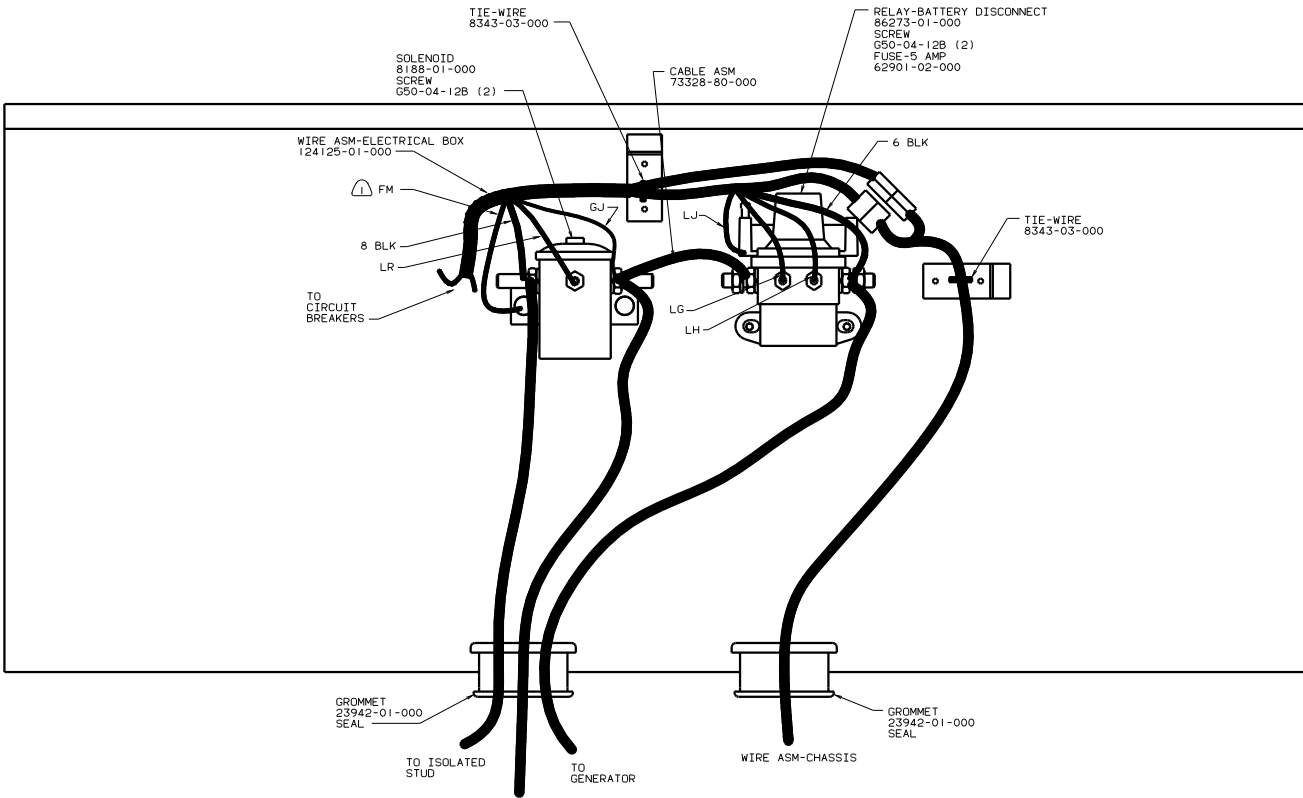


5. CONNECT CABLES TO COACH SIDE OF BATTERY DISCONNECT WHEN BATTERY DISCONNECT IS USED.
4. FOR ADDITIONAL INFORMATION SEE WIRING INSTLATION FRONT END.
3. COVER WITH CONDUIT 41953-10-000 AND 41953-11-000 AS REQUIRED.
2. SUPPLIED WITH CHASSIS.
1. CUT OFF EXCESS END OF WIRE TIE.

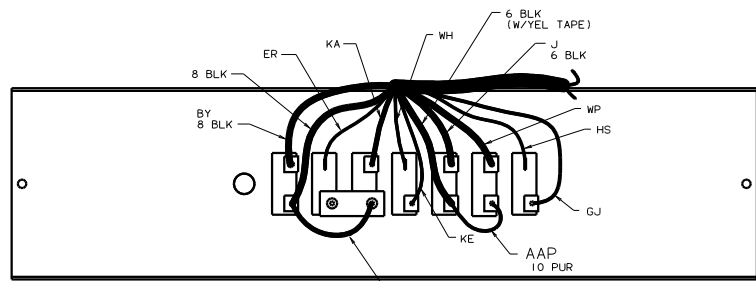
FOR ELECTRICAL TORQUE SPECIFICATIONS SEE DWG NO. 128783-01-000

- 16M FORD CHASSIS 20,500#/V10 ENG
- 265 CODES/STANDARDS-CSA/CMVSS
- 21V SOUND SYSTEM-DELUXE
- 181 CODES STANDARDS/USA
- 00 G35U 181 265 21V

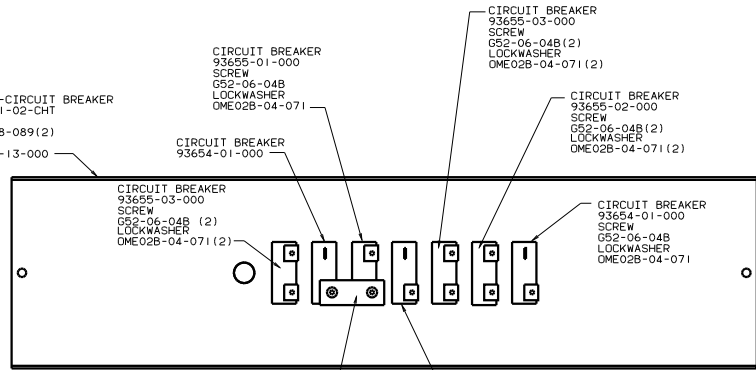
TITLE		WIRING INSTL-CHASSIS	
30 100 SCALE 20000	1/16	1/16	131743
SHEET 2	OF 4	1	1



VIEW CA-CA



VIEW CB-CB (WIRING)



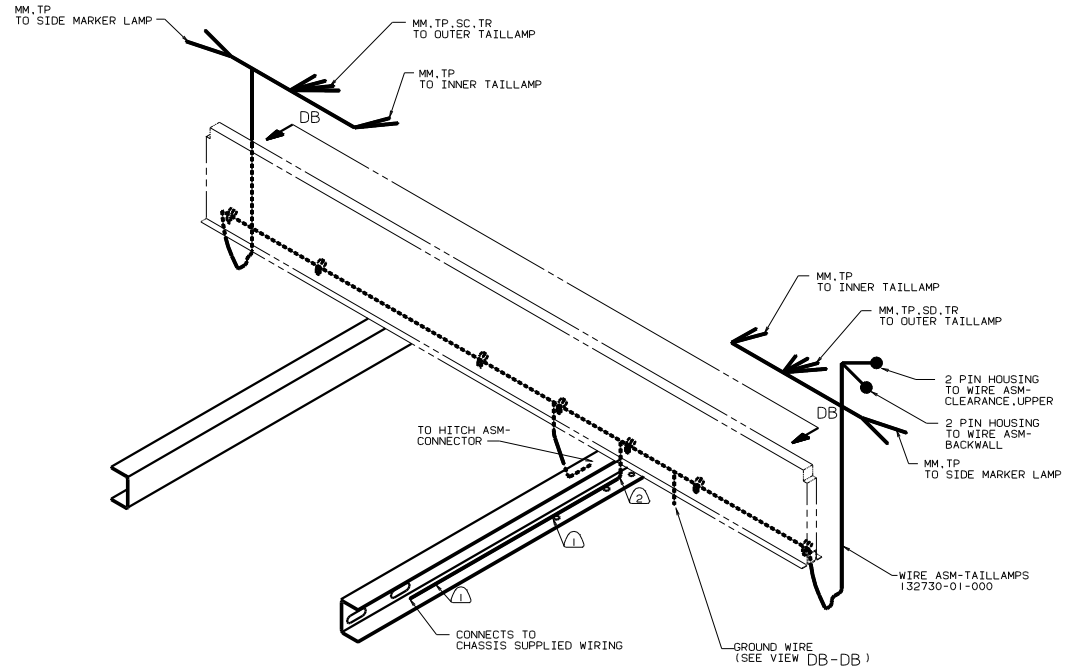
VIEW CB-CB (HARDWARE)

PLATE-CIRCUIT BREAKER
118531-02-CHT
SCREW
G39-08-089(2)
LABEL
93236-13-000

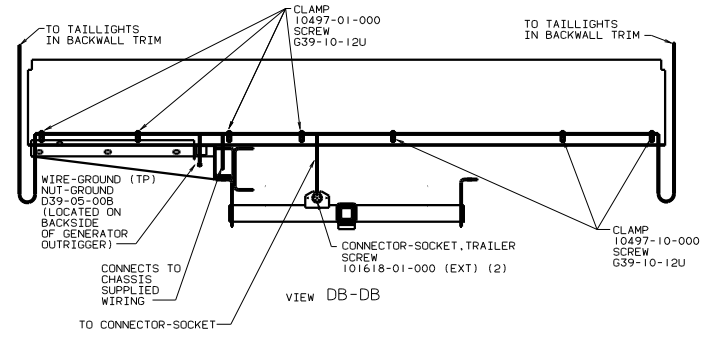
NOTES: SECURE WITH SOLENOID MOUNTING SCREW.

FOR ELECTRICAL
TORQUE
SPECIFICATIONS
SEE DWG NO.
128783-01-000

(265)	CODES/STANDARDS-CSA/CMVSS
(1B1)	CODES STANDARDS/USA
00 G35U	(1B1) (265)
TITLE: WIRING INSTL-CHASSIS	
DRAWING NO. 131743	
SHEET 3 OF 4	



VIEW DA-DA



VIEW DB-DB

- NOTES:
- ② WIRE TO BE ROUTED ON BACK SIDE OF RISER.
 - ① WIRE TIE 8343-02. FASTEN TO FRAME AT LEAST ONCE EVERY 600MM.

FOR ELECTRICAL TORQUE SPECIFICATIONS SEE DWG NO. 128783-01-000

00 G35U	
TITLE	WIRING INSTL-CHASSIS
NO. OF SHEETS	4
SHEET NO.	4
REV.	1
DWG. NO.	131743