



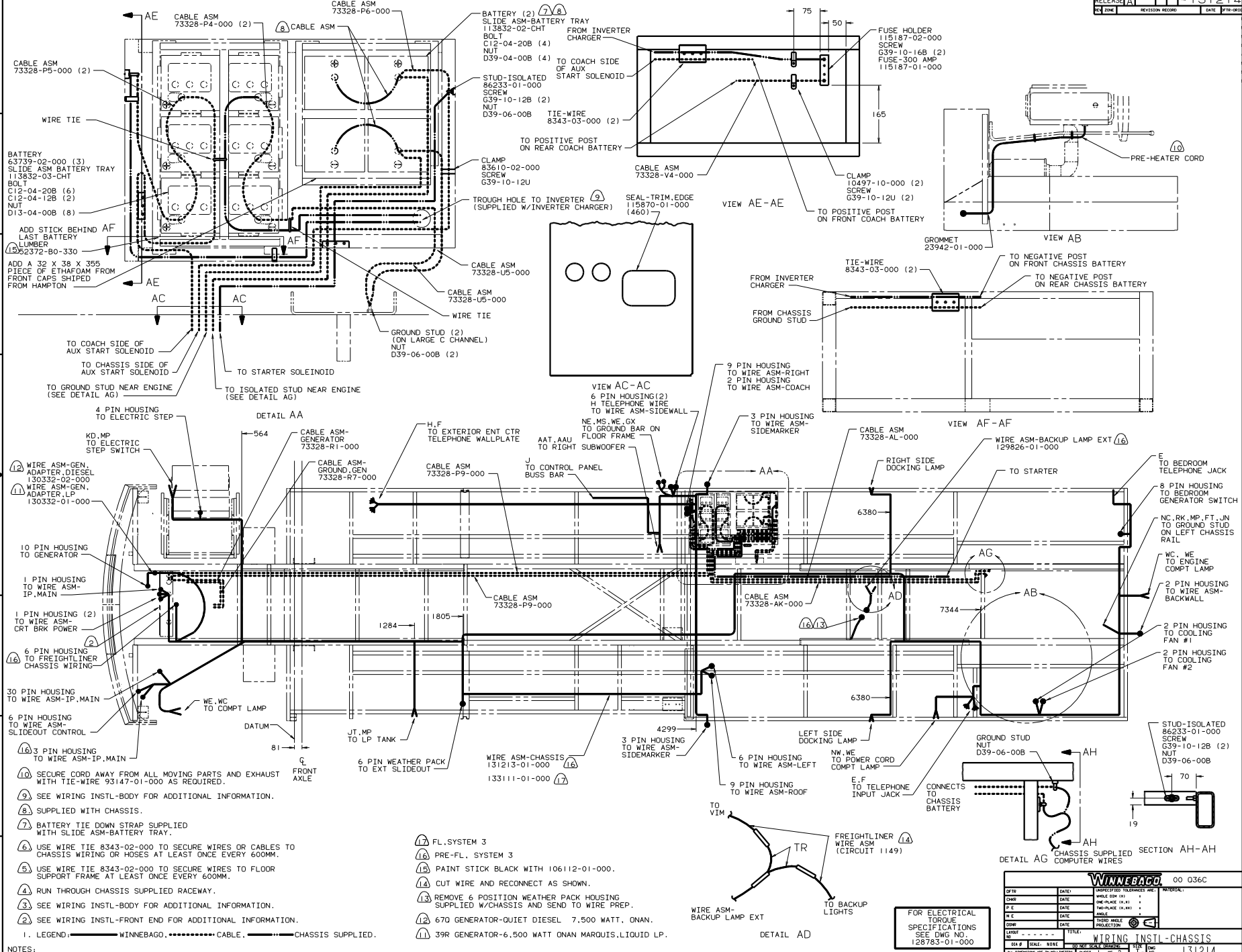
DANGER

Danger of electrical shock, burns or death. Always remove all power sources before attempting any repair, service or diagnostic work. Power can be present from shore power, generator, inverter or battery. All power sources must be disabled and secured before performing any service.



CAUTION

If you lack the skills, tools or equipment to perform diagnostic or repair work leave such work to an authorized Winnebago Industries dealer or other qualified shop.



- 1. LEGEND: — WINNEBAGO, CABLE, — CHASSIS SUPPLIED.
- 2. SEE WIRING INSTL-FRONT END FOR ADDITIONAL INFORMATION.
- 3. SEE WIRING INSTL-BODY FOR ADDITIONAL INFORMATION.
- 4. RUN THROUGH CHASSIS SUPPLIED RACEWAY.
- 13. REMOVE 6 POSITION WEATHER PACK HOUSING SUPPLIED W/CHASSIS AND SEND TO WIRE PREP.
- 12. 670 GENERATOR-QUIET DIESEL 7.500 WATT. ONAN.
- 11. 39R GENERATOR-6,500 WATT ONAN MARQUIS LIQUID LP.
- 10. SECURE CORD AWAY FROM ALL MOVING PARTS AND EXHAUST WITH TIE-WIRE 93147-01-000 AS REQUIRED.
- 9. SEE WIRING INSTL-BODY FOR ADDITIONAL INFORMATION.
- 8. SUPPLIED WITH CHASSIS.
- 7. BATTERY TIE DOWN STRAP SUPPLIED WITH SLIDE ASM-BATTERY TRAY.
- 6. USE WIRE TIE 8343-02-000 TO SECURE WIRES OR CABLES TO CHASSIS WIRING OR HOSES AT LEAST ONCE EVERY 600MM.
- 5. USE WIRE TIE 8343-02-000 TO SECURE WIRES TO FLOOR SUPPORT FRAME AT LEAST ONCE EVERY 600MM.

- 17. FL. SYSTEM 3
- 16. PRE-FL. SYSTEM 3
- 15. PAINT STICK BLACK WITH 106112-01-000.
- 14. CUT WIRE AND RECONNECT AS SHOWN.
- 13. REMOVE 6 POSITION WEATHER PACK HOUSING SUPPLIED W/CHASSIS AND SEND TO WIRE PREP.
- 12. 670 GENERATOR-QUIET DIESEL 7.500 WATT. ONAN.
- 11. 39R GENERATOR-6,500 WATT ONAN MARQUIS LIQUID LP.

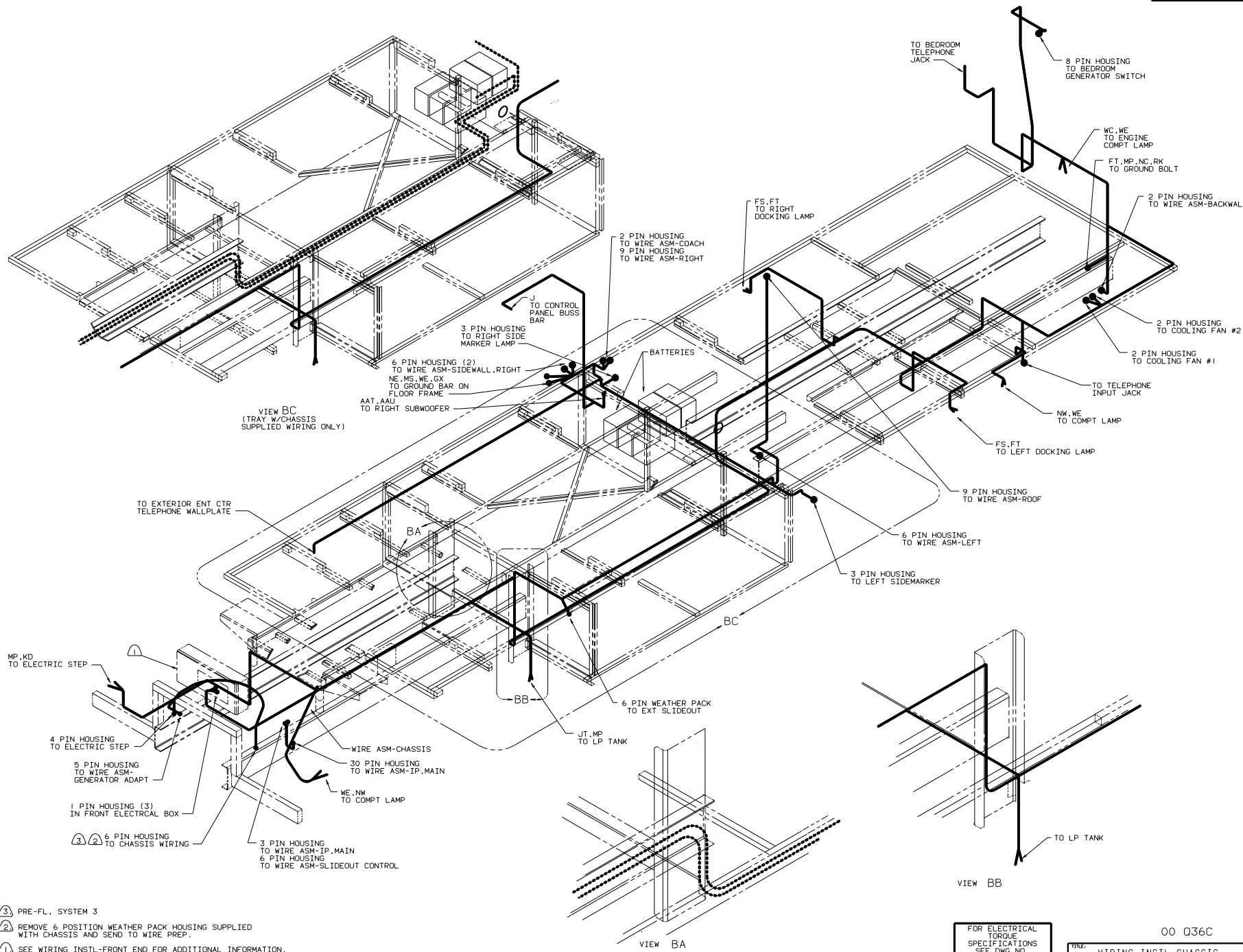
FOR ELECTRICAL TORQUE SPECIFICATIONS SEE DWG NO. 128783-01-000

OP IN	DATE	UNDESIGNED TOLERANCES ARE:	MATERIAL
CHRP	DATE	WHOLE OR 1/2"	
PIE	DATE	ONE-PLACE (R. 31)	
PIE	DATE	TWO-PLACE (R. 30)	
PIE	DATE	THREE-PLACE (R. 29)	
COMP	DATE	INDUS. W/OLE PRODUCTION	

WINNEBAGO 00 036C

WIRING INSTL-CHASSIS

131214



- ③ PRE-FL. SYSTEM 3
- ② REMOVE 6 POSITION WEATHER PACK HOUSING SUPPLIED WITH CHASSIS AND SEND TO WIRE PREP.
- ① SEE WIRING INSTL-FRONT END FOR ADDITIONAL INFORMATION.

NOTES:

FOR ELECTRICAL TORQUE SPECIFICATIONS SEE DWG NO. 128783-01-000

00 Q36C	
TITLE: WIRING INSTL-CHASSIS	
30 DAY SCALE DRAWING	REV 1
SHEET 2 OF 2	131214