



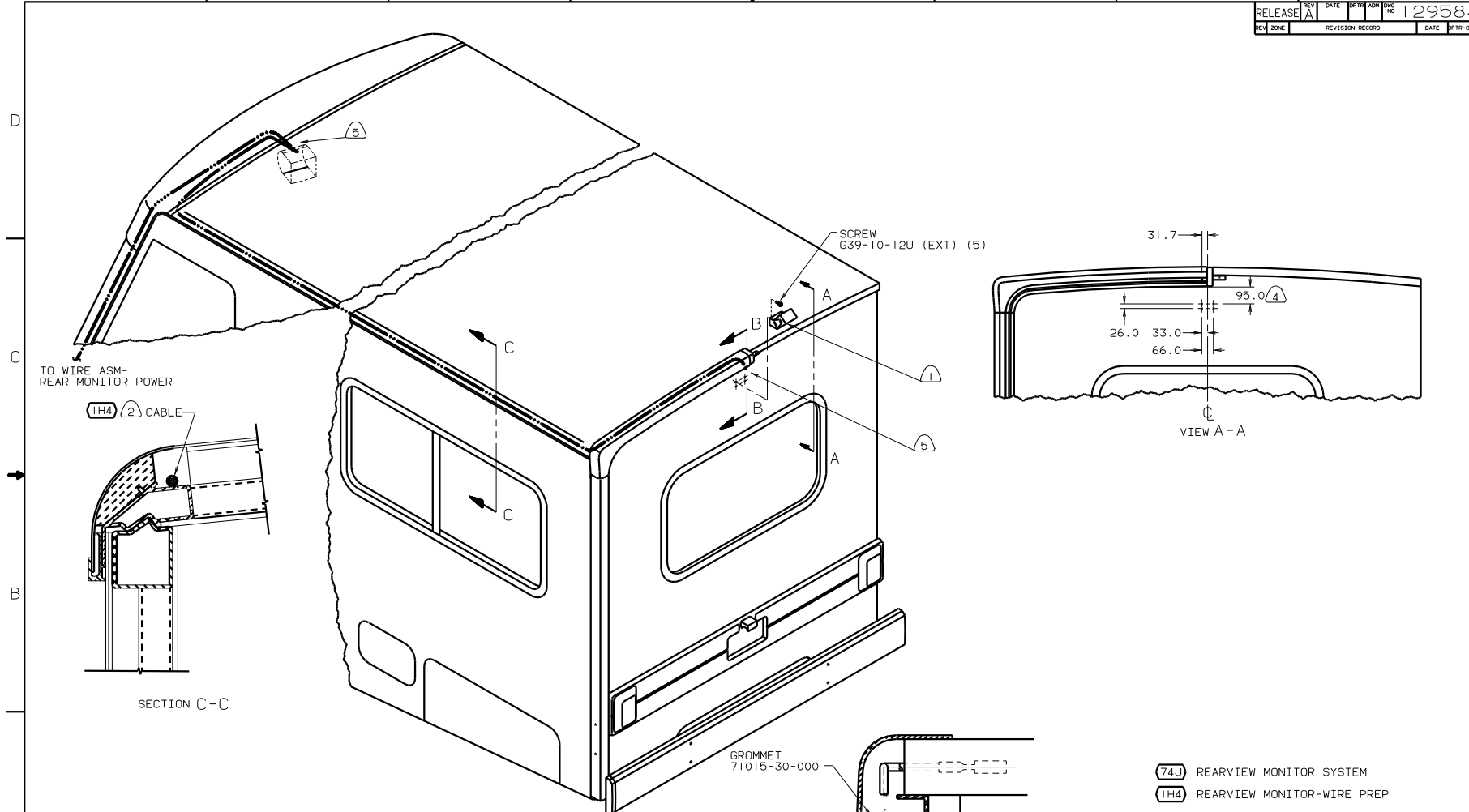
**DANGER**

**Danger of electrical shock, burns or death.** Always remove all power sources before attempting any repair, service or diagnostic work. Power can be present from shore power, generator, inverter or battery. All power sources must be disabled and secured before performing any service.



**CAUTION**

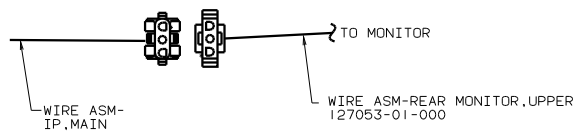
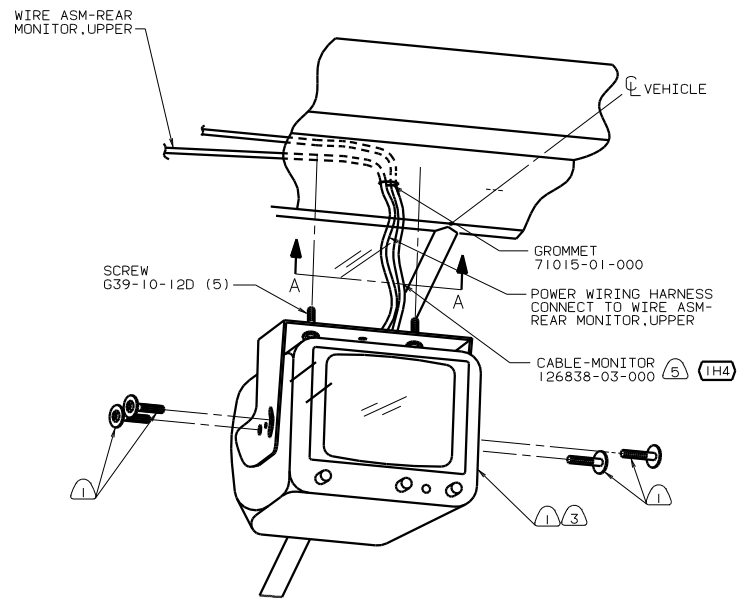
If you lack the skills, tools or equipment to perform diagnostic or repair work leave such work to an authorized Winnebago Industries dealer or other qualified shop.



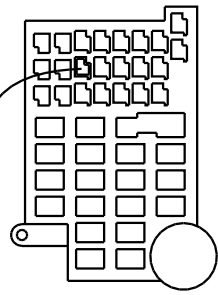
- NOTES:
- (5) END CABLE IN THIS AREA ON UNITS WITHOUT MONITOR WITH (1H4).
  - (4) MEASURED FROM BOTTOM BACKWALL TRIM.
  - (3) FACE OF MONITOR TO BE TOWARDS DRIVER, APPROX 45° OFF CENTER.
  - (2) RUN CABLE THRU LEFT HAND COVE TO REAR OF UNIT WITH (1H4).
  - (1) PARTS SUPPLIED WITH CAMERA KIT P/N 126838-01-000.

- (74J) REARVIEW MONITOR SYSTEM
- (1H4) REARVIEW MONITOR-WIRE PREP

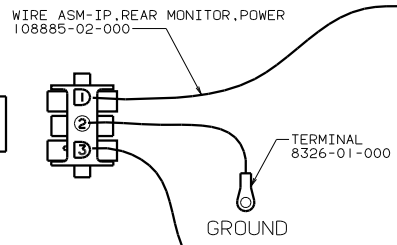
LAYOUT NO. -----		TITLE: MONITOR INSTL	
DIA #	SCALE: NONE	TO NEXT SCALE (CONTINUED)	FILE NO
ALL DIMENSIONS ARE IN MILLIMETERS		SHEET 1 OF 2	DWG NO 129584



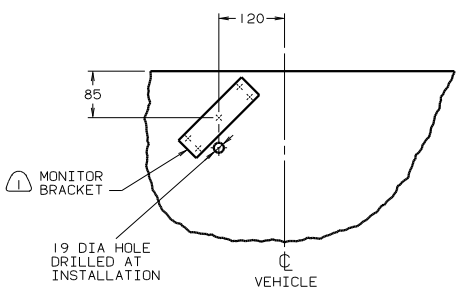
FORD & OSHKOSH & WORKHORSE (2)



FUSE BLOCK



CHEVY & WORKHORSE (1)



VIEW A-A

- NOTES:
- (2) 2001 WORKHORSE CHASSIS.
  - (1) 2000 WORKHORSE CHASSIS AND OLDER.

TITLE:		MONITOR INSTL	
DO NOT SCALE DRAWING	SHEET 2	OF 2	DWG NO 129584