

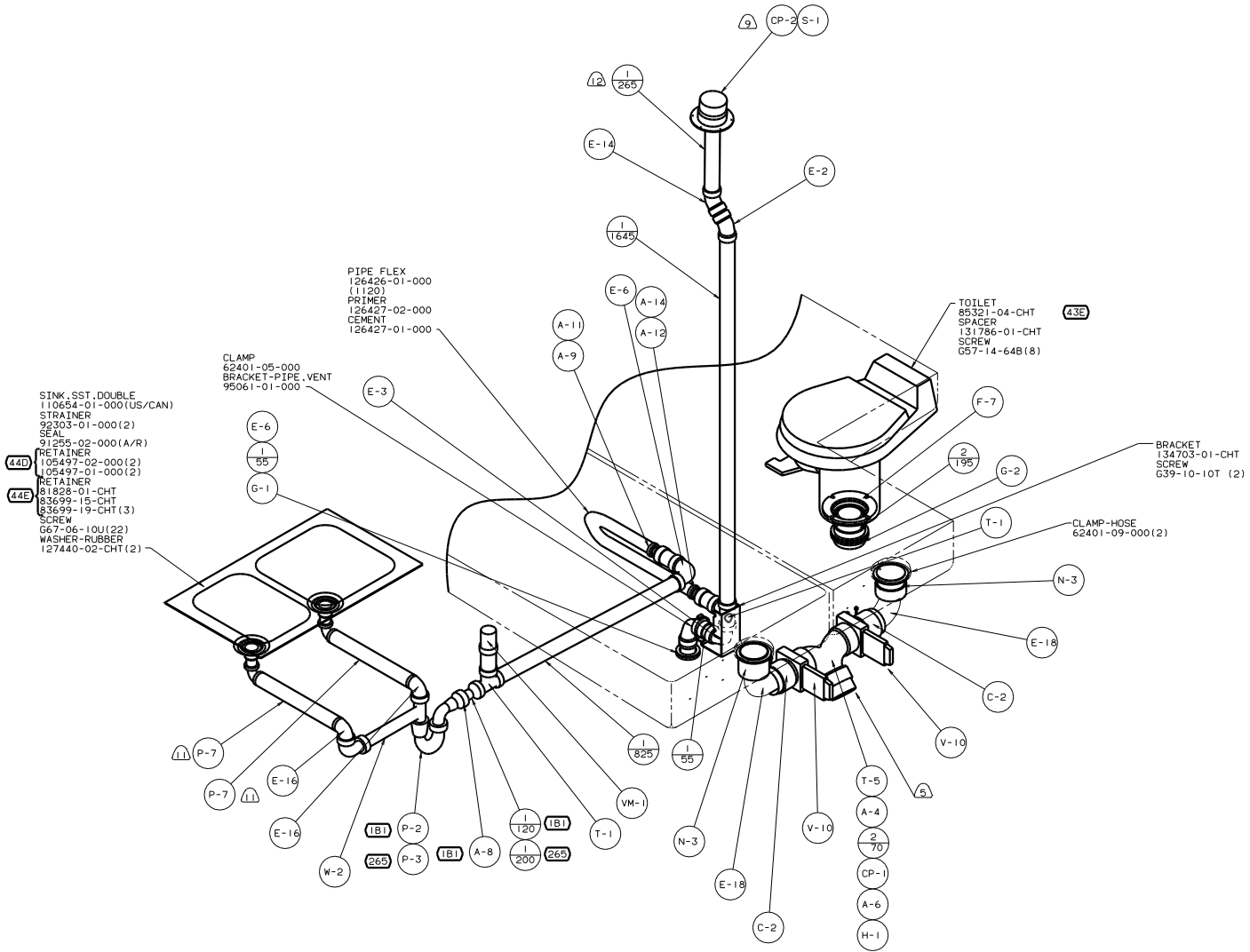
- COVER PIPE FROM ELBOW UP SCRAPER 9CARPT-02 WHEN AVAILABLE OR 9CART-02+000 (150 X 178).
- VALVE TERMINATION TEE TO BE POSITIONED AT 45° DOWN AND OUTBOARD.
- TRIM TO FIT.
- VENT PIPE MUST PROJECT 51 MIN AND 63.5 MAX ABOVE ROOF FOR PROPER FIT AND FUNCTION.
- SEE DWG 61607-01-000 FOR INSTL OF GROMMETS.
- SEAL ALL AROUND SHOWER WITH SILICONE.
- FOR CANADIAN UNITS EACH HOLDING TANK SHALL HAVE A CSA APPROVAL STAMPED NEAR THE TAMPO APPROVAL.
- FASTEN TO BOTTOM OF UPPER FLOOR.
- ALL EXTERIOR OPENINGS AROUND PIPE TO BE SEALED WITH 110744-01-000.
- ALL PIPE AND FITTINGS TO BE ASSEMBLED WITH SOLVENT 4020-01-000.
- SLOPE OF TRAP ARM MUST BE 6 PER 305.
- SLOPE OF HORIZONTAL PIPING TO BE 6 PER 305 MIN.

- A COUNTRTOP-SOL.SURFACE-GALLEY
- 44D COUNTRTOP-LAMINATE W/WOOD
- 265 CODES/STANDARDS-CSA/CMVSS
- 211 WASHER/DRYER-WITHOUT
- 1B1 CODES/STANDARDS USA
- 54E WASHER/DRYER
- 43E TOILET PORCELAIN-ROUND
- 21M WASHER/DRYER PREP

FOR DRAINAGE CALLOUTS SEE DWG NO. 116229-01-000

| | | | |
|-------|------|-----------------------------|----------|
| | | 00 P36L | |
| QTY | DATE | UNSPECIFIED TOLERANCES ARE: | REVISION |
| CHP | DATE | WHOLE OR .01 | F |
| PIE | DATE | ONE-PLACE (X.X) | |
| P.T.E | DATE | TWO-PLACE (X.XX) | |
| MM | DATE | THREE-PLACE (X.XXX) | |
| CDR | DATE | THREE-PLACE (X.XXX) | |
| DRN | DATE | THREE-PLACE (X.XXX) | |
| DRN | DATE | THREE-PLACE (X.XXX) | |

LANHT L00A TITLE: DRAINAGE SYSTEM INSTL
 DIA # SCALE: NONE 100 PER SCALE DRAWING
 ALL DIMENSIONS ARE IN MILLIMETERS SHEET 1 OF 4 1:1 E NO 132398
 REF: 125998 X 1



- SINK, SST. DOUBLE
110654-01-000(US/CAN)
- STRAINER
92303-01-000(2)
- SEAL
91255-02-000(A/R)
- RETAINER
105497-02-000(2)
- RETAINER
105497-01-000(2)
- RETAINER
81828-01-CHT
- SCREW
83699-15-CHT
- SCREW
667-06-10U(22)
- WASHER-RUBBER
127440-02-CHT(2)

- PIPE FLEX
126426-01-000
(1120)
- PRIMER
126427-02-000
- CEMENT
126427-01-000

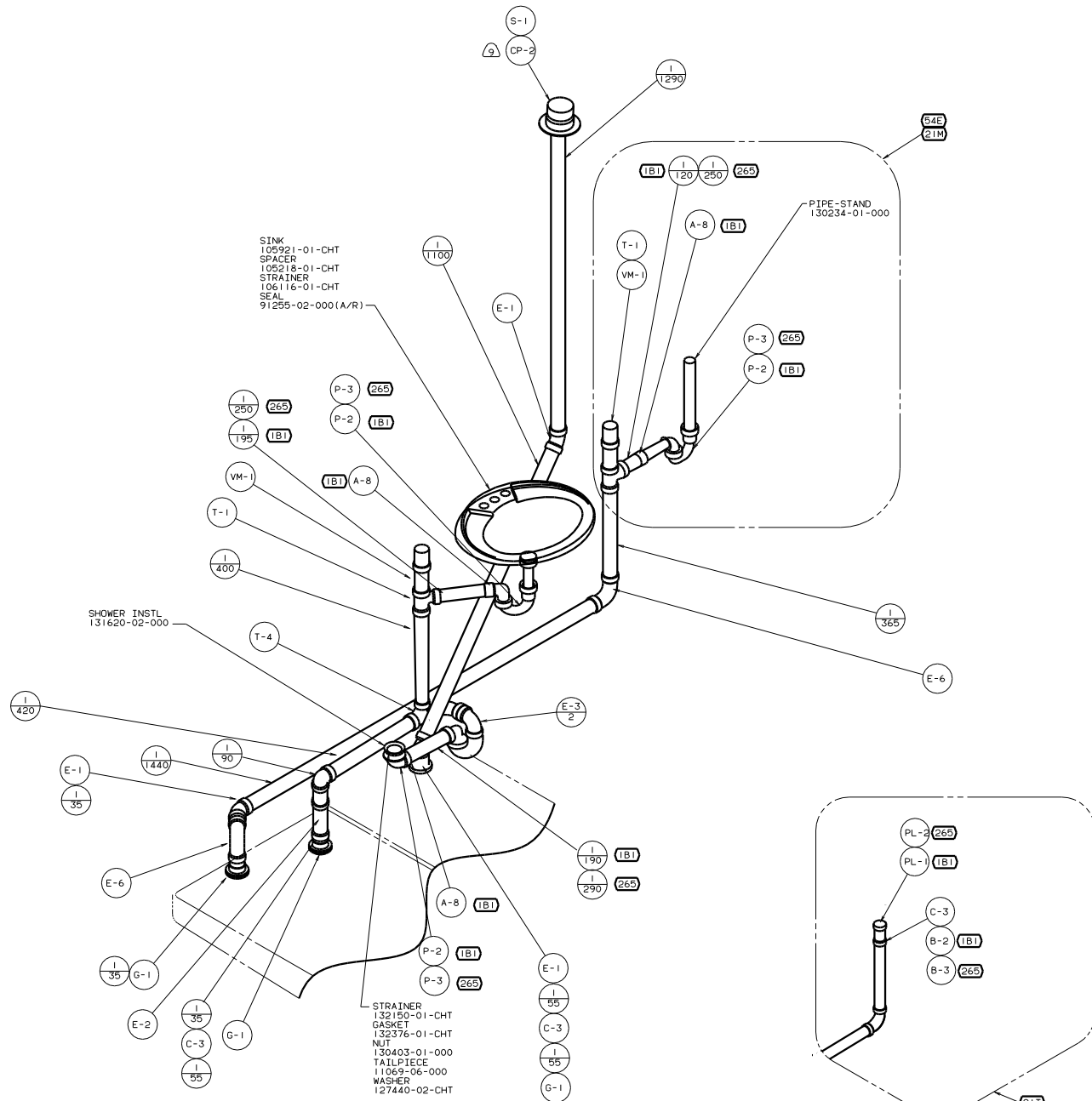
- CLAMP
62401-05-000
- BRACKET-PIPE, VENT
95061-01-000

- TOILET
85321-04-CHT
- SPACER
131786-01-CHT
- SCREW
G57-14-64B(8)

- BRACKET
134703-01-CHT
- SCREW
G39-10-10T (2)

- CLAMP-HOSE
62401-09-000(2)

VIEW A-A



SINK
 105921-01-CHT
 SPACER
 105218-01-CHT
 STRAINER
 106116-01-CHT
 SEAL
 91255-02-000(A/R)

SHOWER INSTL
 131620-02-000

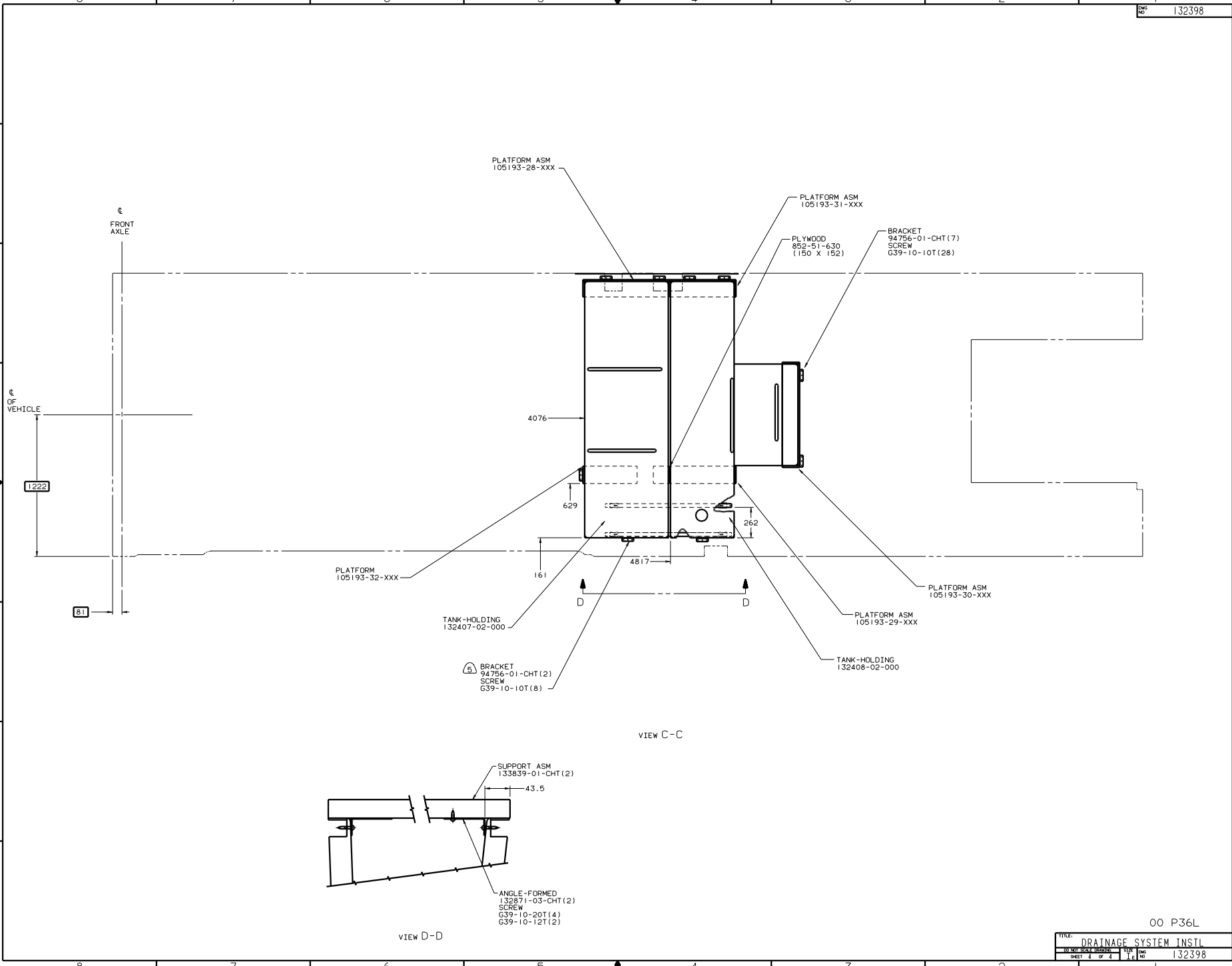
PIPE-STAND
 130234-01-000

STRAINER
 132150-01-CHT
 GASKET
 132376-01-CHT
 NUT
 130403-01-000
 TAILPIECE
 11069-06-000
 WASHER
 127440-02-CHT

VIEW B-B

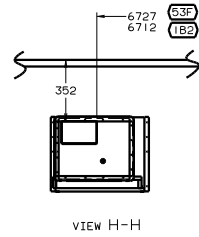
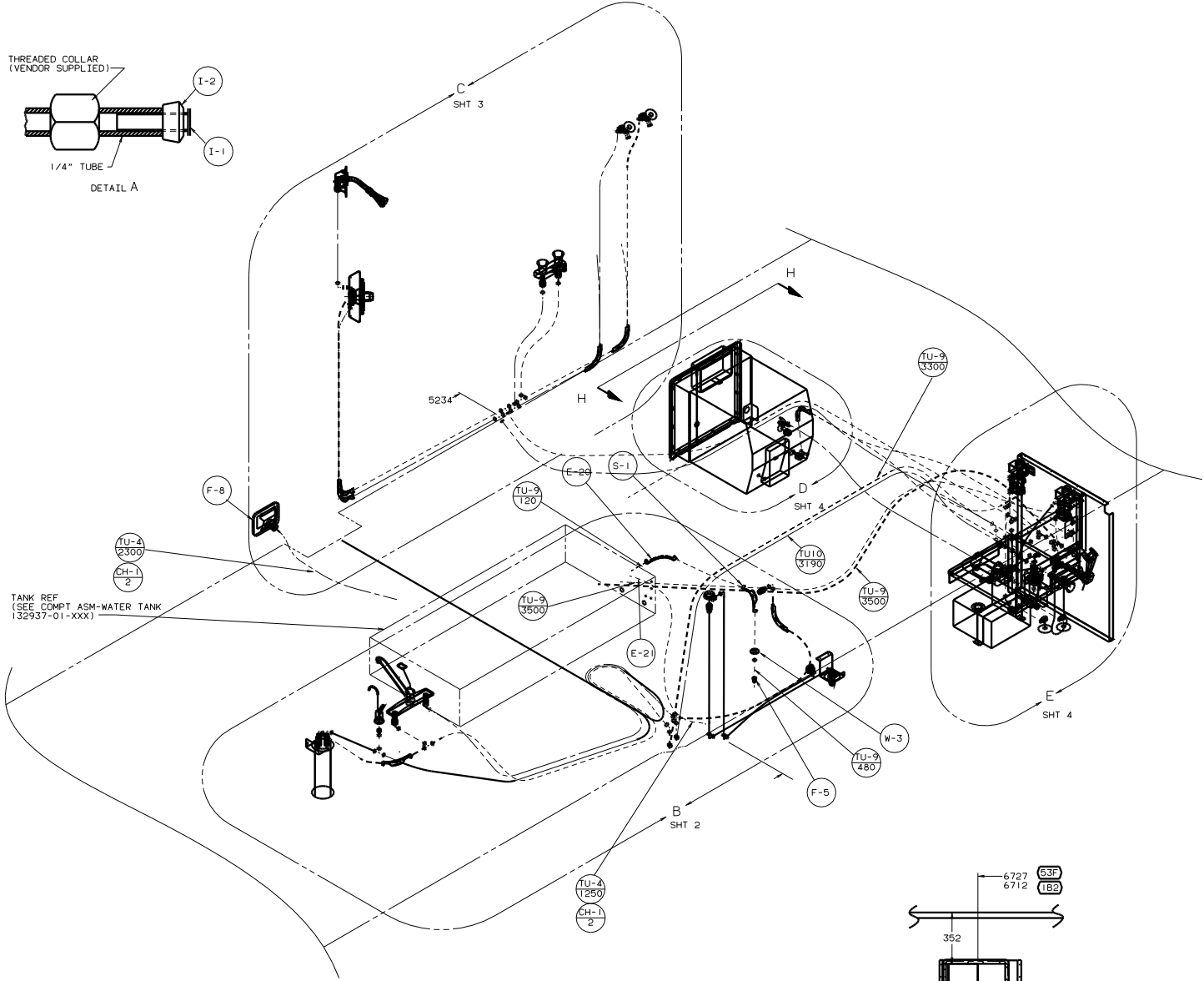
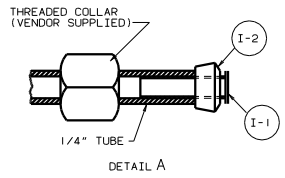
00 P36L

| | |
|------------------------------|-------------|
| TITLE: DRAINAGE SYSTEM INSTL | |
| NO. OF SHEETS: 4 | SHEET NO. 3 |
| DATE: 1/16 | REV. NO. 1 |
| 132398 | |



00 P36L

| | | | |
|------------------------------|--------------|----------------|-----------------|
| TITLE: DRAINAGE SYSTEM INSUL | | DATE: 11/01/05 | FIG. NO: 132398 |
| 30-001-000-0000 | SHEET 4 of 4 | REV: 1 | 132398 |



- (21T) WASHER/DRYER WITHOUT
- (64E) WASHER/DRYER
- (64R) EXTERIOR WASH STATION
- (63Z) WATER HEATER BY-PASS-VALVE
- (63C) WATER HEATER-ELEC. IGNITION
- (21W) WASHER/DRYER PREP
- (1B2) WTR HTR-10GAL/ELEC/LP/MTR/AID
- (29B) WATER PURIFIER
- (18U) REFRIGERATOR/FRZR W/ICEMAKER

- 1. PLASTIC FITTINGS TO BE SEALED WITH SEALANT 84456-01-000.
 - 2. TUBING TO BE INSTALLED WITH SUFFICIENT SLOPE TO PROVIDE DRAINAGE TO NEAREST VALVE.
 - 3. ALL TUBING TO BE SECURED AT 1200 INTERVALS MAXIMUM WITH CLAMP 10495-01-000 OR CLIP 9151-01-000 AND SCREW G67-10-12B.
- (A) FLUSHING SYSTEM REQUIRES 125697-06-000 INSTRUCTION SHEET.
 (B) CLAMPS MUST BE ON BARBS.
 (C) USE DETAIL "A" IN THIS AREA.

| LEGEND | |
|--------|-------|
| HOT | ----- |
| COLD | ----- |

FOR WATER CALLOUTS SEE DWG NO. 116230-01-000

WINNEBAGO 00 P36L

| QTY | DATE | UNDESIGNED TOLERANCES ARE: | MATERIAL |
|-----|------|----------------------------|----------|
| DRP | DATE | WHOLE OR .01 | |
| DYE | DATE | ONE-PLACE (X.X1) | |
| D/E | DATE | TWO-PLACE (X.XX) | |
| CDR | DATE | THREE-PLACE (X.XXX) | |

LAYOUT NO. P36L TITLE: WATER SYSTEM INSTL
 REV # SCALE: NONE 20-100 SCALE: 3/16"=1'-0" SHEET 1 OF 5
 ALL DIMENSIONS ARE IN MILLIMETERS

TO REFRIGERATOR

TO WATER CENTER

CHECK VALVE
125697-03-000

△ BREAKER-VACUUM
125697-04-000
(MUST BE MOUNTED ABOVE
TOILET FLOOD LEVEL)

FAUCET-GALLEY, SGL CONTROL
104114-02-CHT

29B FAUCET
103635-01-000

29B FILTER
87200-01-000
29B CARTRIDGE
87200-02-000
29B SCREW
G67-10-12U(2)

BRACKET-SUPPORT
132765-01-CHT

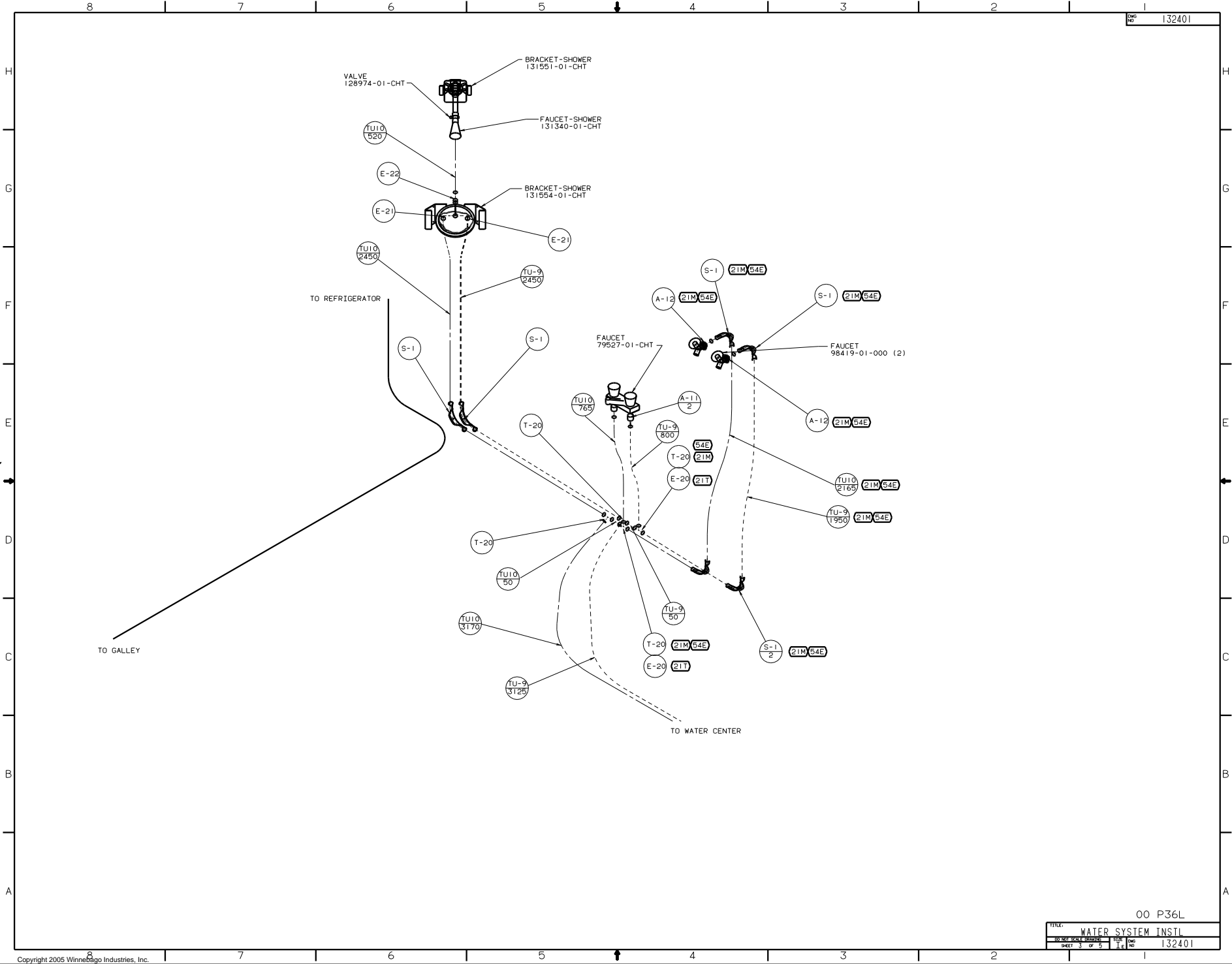
FILL INLET
125697-05-000

DETAIL B

DETAIL G

00 P36L

| | | | |
|-------|------|--------------------|----|
| TITLE | | WATER SYSTEM INSTL | |
| NO | DATE | REV | BY |
| 2 | 5 | 1 | E |
| SHEET | | 132401 | |



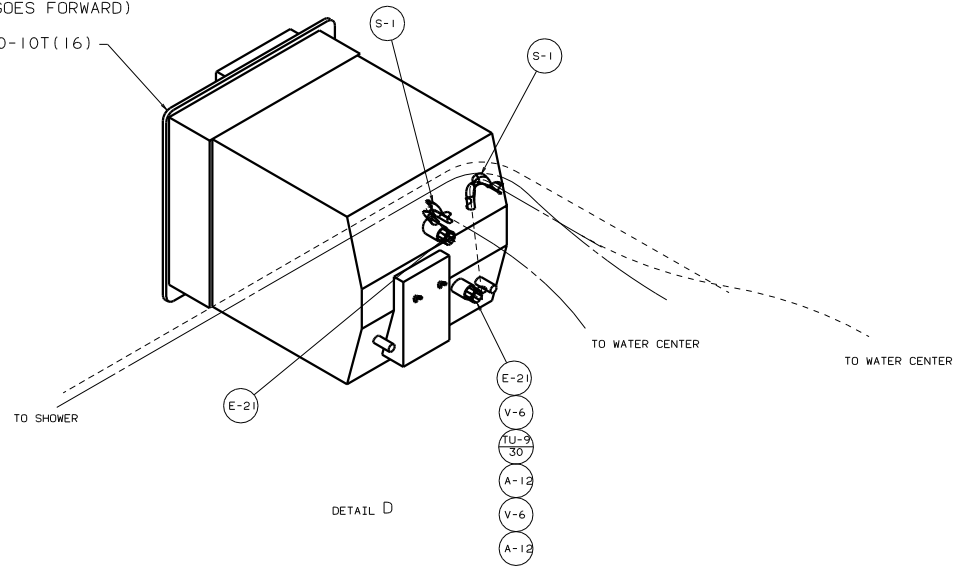
TO REFRIGERATOR

TO GALLEY

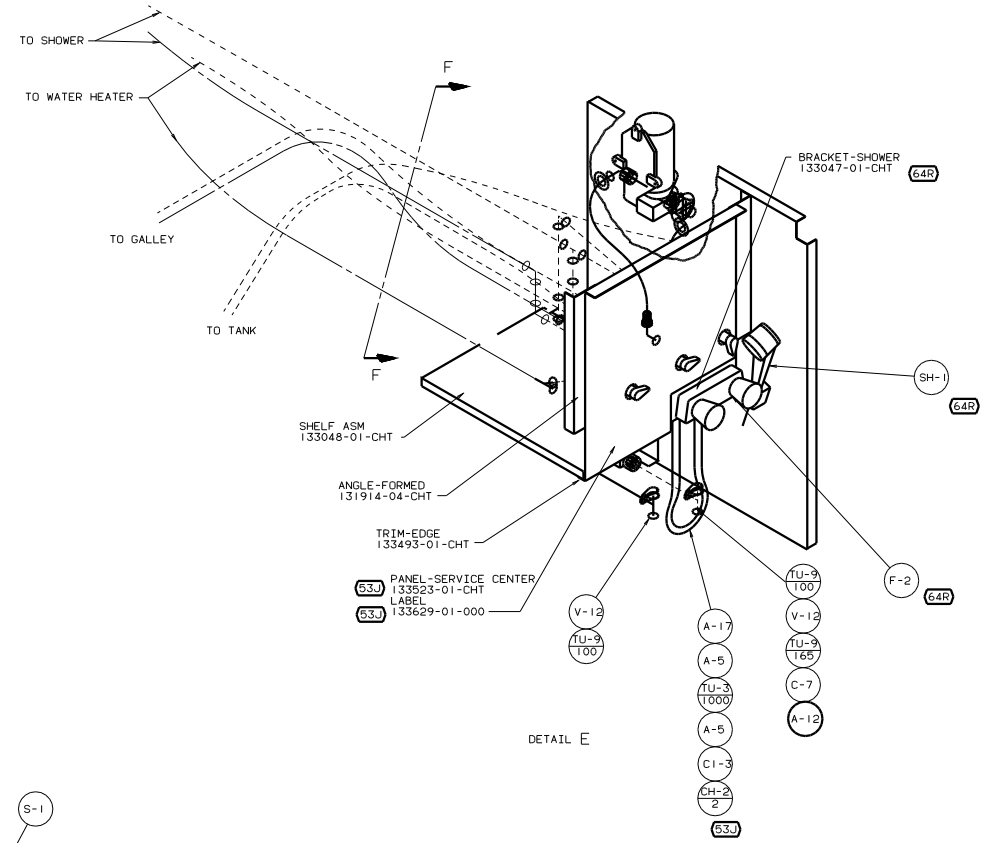
TO WATER CENTER

| | |
|---------------------------|-----------------|
| TITLE: WATER SYSTEM INSTL | |
| NO. OF SHEETS: 5 | SHEET NO: 3 |
| DATE: 11/16/05 | DWG. NO: 132401 |

- 63F WATERHEATER-6 GAL
51391-03-000
DOOR
125420-02-CHT
PLATE-WATER HEATER
133224-02-CHT
(TAB GOES FORWARD)
SCREW
G39-10-10T(16)
PLATFORM ASM
133631-01-000
- 1B2 WATERHEATER-10 GAL
51391-05-000
DOOR
125420-01-CHT
PLATE-WATER HEATER
133224-01-CHT
(TAB GOES FORWARD)
SCREW
G39-10-10T(16)

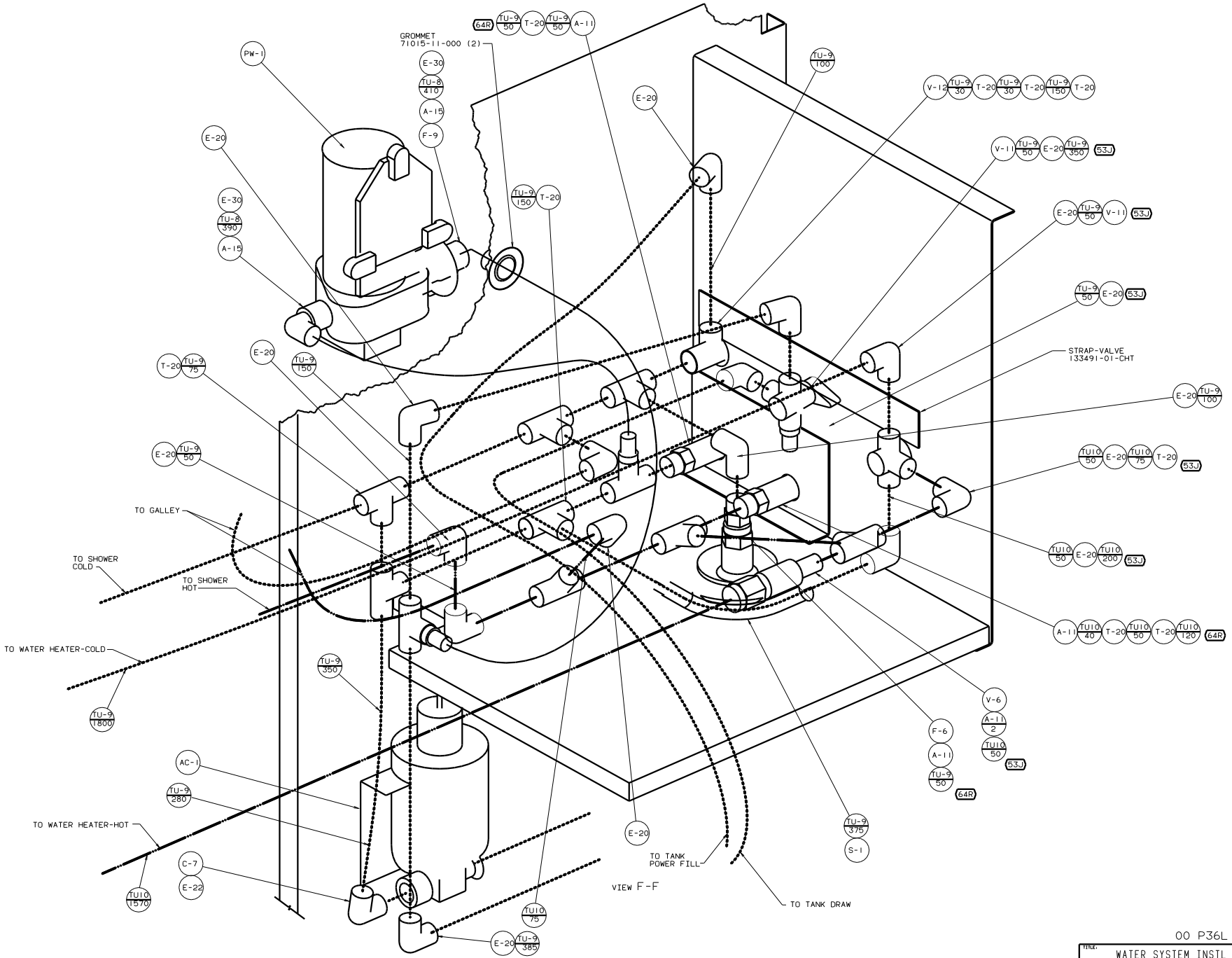


DETAIL D



DETAIL E

| | |
|-----------------------------------|--------------------|
| 00 P36L | |
| TITLE | WATER SYSTEM INSTL |
| 30 1/2" X 46 1/2" (762 X 1181) mm | 1 1/8" (31.8) mm |
| SHEET 4 OF 5 | 132401 |



GROMMET
71015-11-000 (2)

STRAP-VALVE
133491-01-CHT

VIEW F-F

00 P36L

| | |
|-------------------------|--------------------|
| TITLE | WATER SYSTEM INSTL |
| NO. THIS SHEET CONTAINS | 16 |
| SHEET NO. OF SHEETS | 5 OF 5 |
| DATE | 11/01/05 |
| FIG. NO. | 132401 |