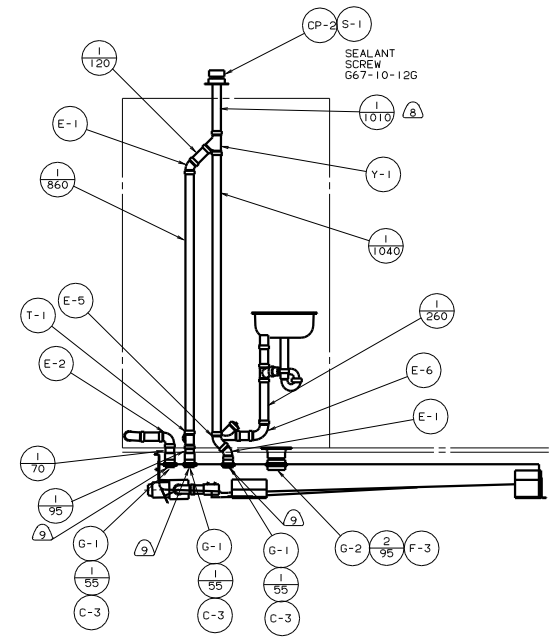
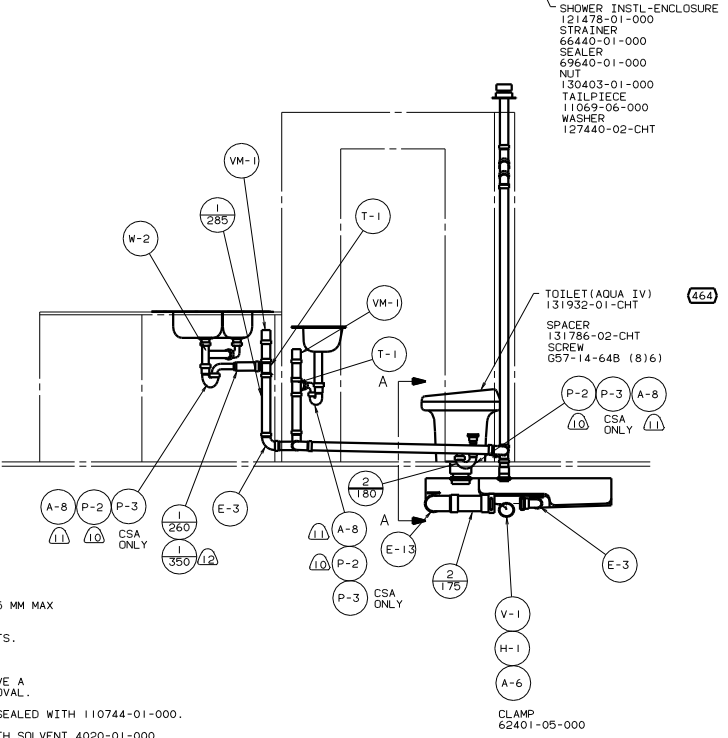


0  
 FRONT  
 AXLE



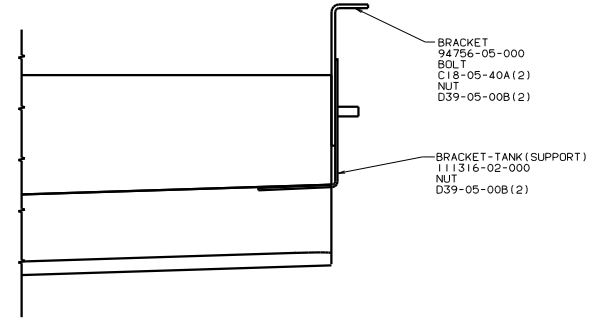
- 13 SECURE PIPES TO CABINET USING WIRE TIE 108046-02-000 AND SCREW G67-10-12U(8).
- 12 USE WITH CSA.
- 11 NOT USED ON CANADIAN UNITS.
- 10 TRIM P-TRAP TO FIT.
- 9 SECURE VENT TUBES TO FLOOR WITH BRACKET 95061-01-000 (2). CLAMP 62401-02-000, SCREW G67-10-12B (2).
- 8 VENT PIPE MUST PROJECT 51 MM MIN AND 63.5 MM MAX ABOVE ROOF FOR PROPER FIT AND FUNCTION.
- 7. SEE DWG 61607-01-000 FOR INSTL OF GROMMETS.
- 6. SEAL ALL AROUND SHOWER WITH SILICONE.
- 5. FOR CAN UNITS EACH HOLDING TANK SHALL HAVE A CSA APPROVAL STAMPED NEAR THE TAMPO APPROVAL.
- 4. ALL EXTERIOR OPENINGS AROUND PIPE TO BE SEALED WITH 110744-01-000.
- 3. ALL PIPE AND FITTINGS TO BE ASSEMBLED WITH SOLVENT 4020-01-000.
- 2. SLOPE OF TRAP ARM MUST BE 6 PER 305 MINIMUM.
- 1. SLOPE OF HORIZONTAL PIPING TO BE 6 PER 305 MINIMUM.

464

464 TOILET

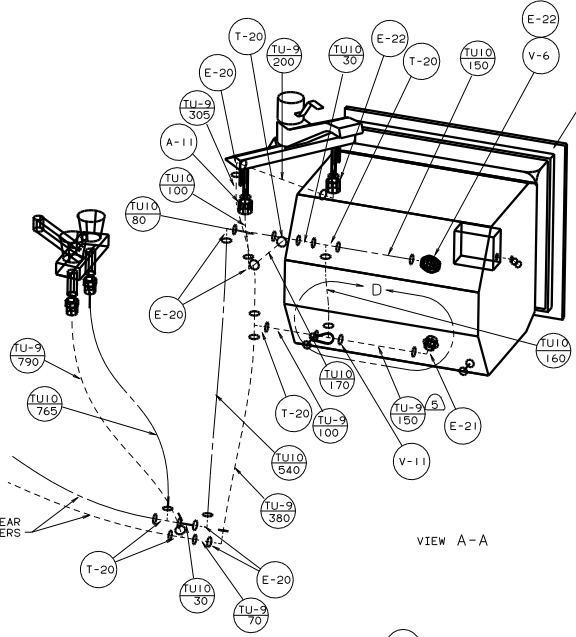
X-X  
 FOR  
 DRAINAGE  
 CALLOUTS  
 SEE DWG NO.  
 116229-01-000

WINNEBAGO		96 431W0	
OF IN	DATE	UNSPECIFIED TOLERANCES ARE:	MATERIAL
CHP	DATE	WHOLE DIM (R)	
PIE	DATE	ONE-PLACE (R.XI)	
D/E	DATE	TWO-PLACE (R.XXI)	
DATE	DATE	ANGLE	
DATE	DATE	THIRD ANGLE	
DATE	DATE	PROJECTION	
DRAWN 431W06		TITLE	
REV # SCALE 0:1		DRAINAGE SYSTEM INSTL	
ALL DIMENSIONS ARE IN MILLIMETERS		SHEET 1 OF 2	
		121394	



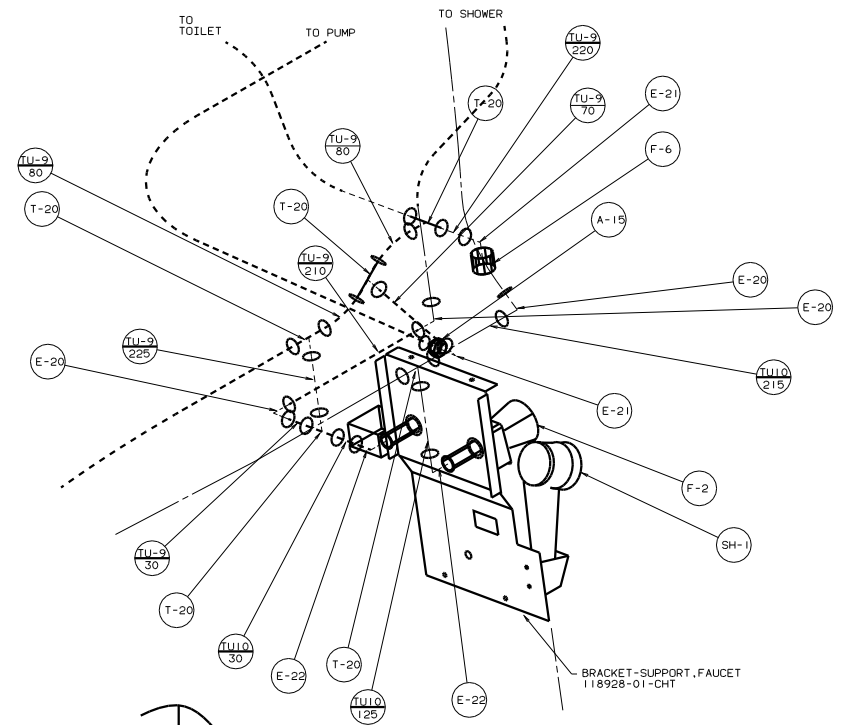
VIEW A-A





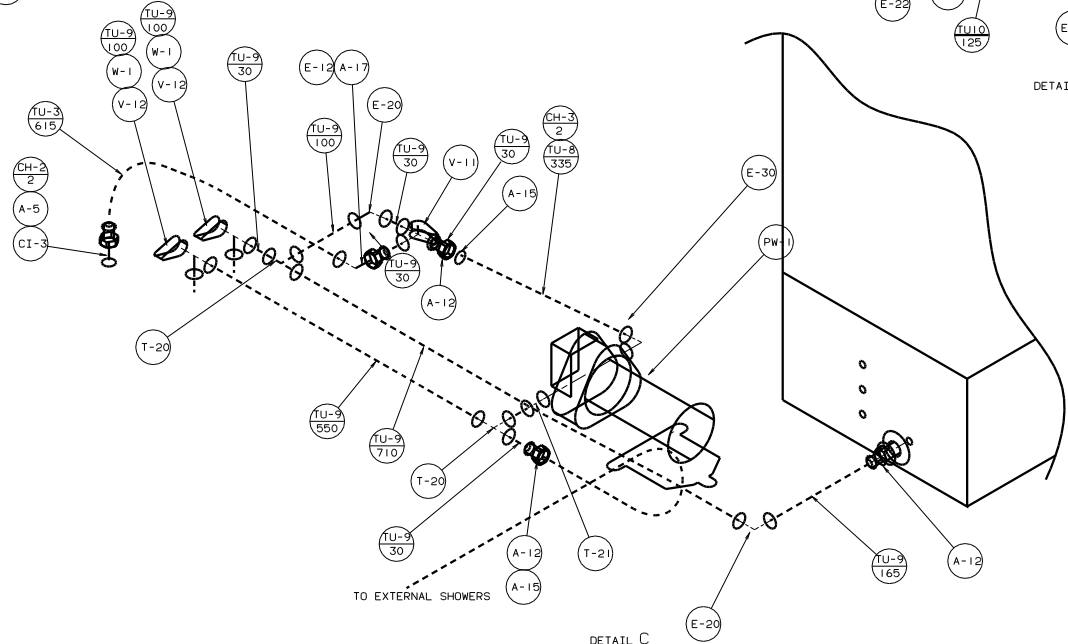
VIEW A-A

WATER HEATER (5)  
 51391-02-000  
 (ELECTRONIC IGNITION)  
 51391-03-000  
 (WITH MOTOR AID) (A)  
 DOOR  
 78506-01-CHT  
 AL EXTR  
 2726-01-210  
 2726-01-212 (2)  
 SCREW  
 G39-10-169 (18)  
 SEALANT

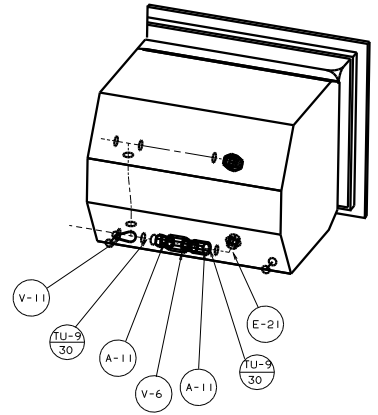


BRACKET-SUPPORT, FAUCET  
118928-01-CHT

DETAIL B



DETAIL C



VIEW D  
WITH MOTOR AID