



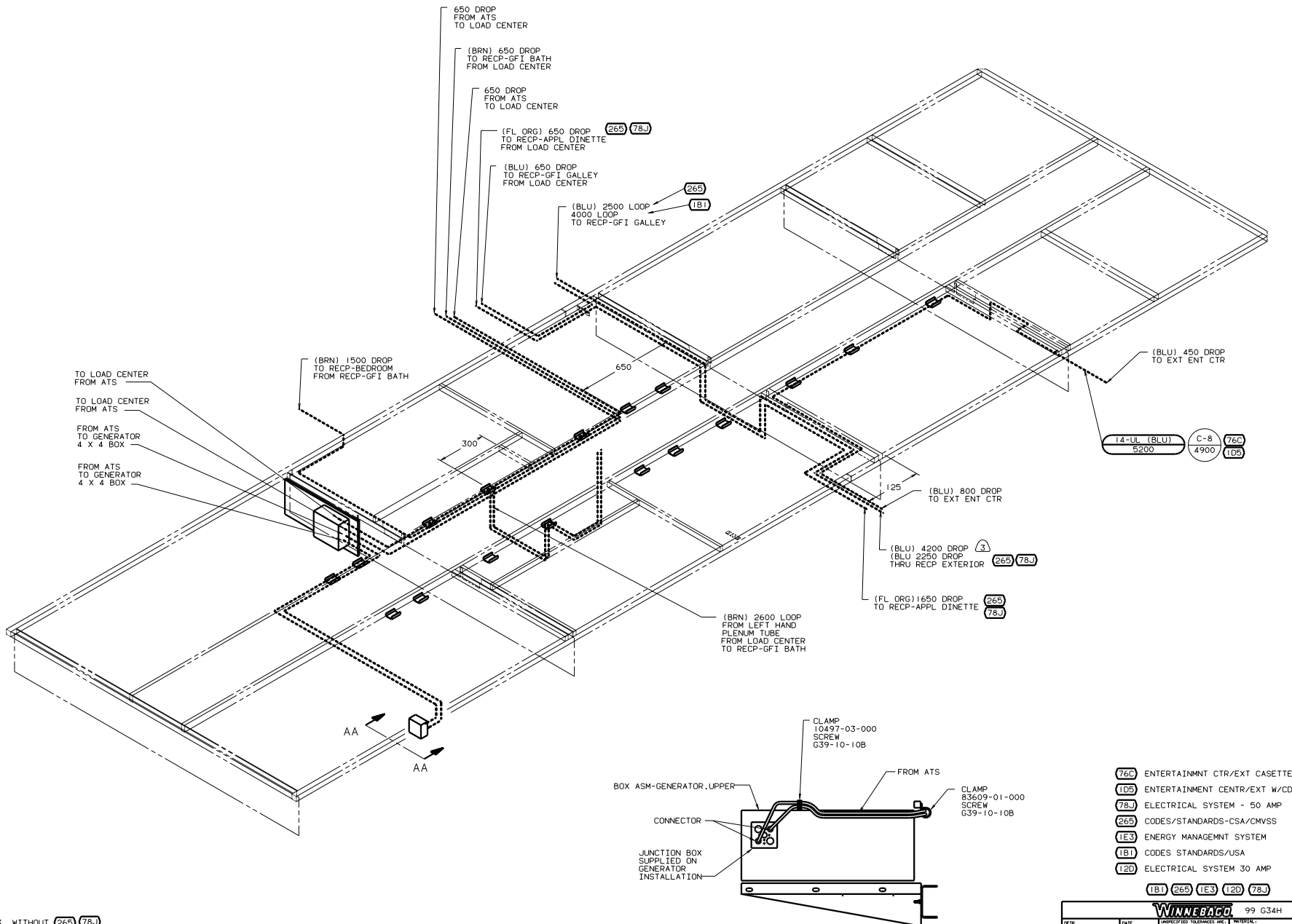
DANGER

Danger of electrical shock, burns or death. Always remove all power sources before attempting any repair, service or diagnostic work. Power can be present from shore power, generator, inverter or battery. All power sources must be disabled and secured before performing any service.



CAUTION

If you lack the skills, tools or equipment to perform diagnostic or repair work leave such work to an authorized Winnebago Industries dealer or other qualified shop.



- 3. WITHOUT (265) (78J)
- 2. WIRES THAT REST ON WIRE TRAYS ARE TO BE TIED DOWN WITH WIRE TIE 8343-02-000.
- 1. CLAMP TO FLOOR SUPPORT TUBES AS NECESSARY WITH CLAMP 10497-01-000.

NOTES:

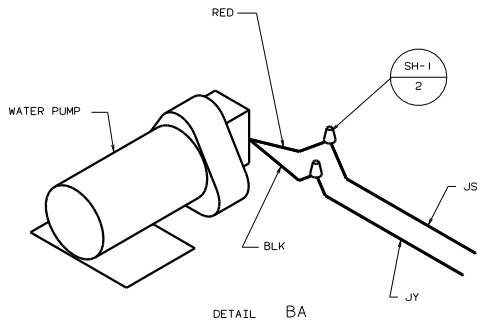
- (76C) ENTERTAINMENT CENTER/EXT CASSETTE
- (105) ENTERTAINMENT CENTER/EXT W/CD
- (78J) ELECTRICAL SYSTEM - 50 AMP
- (265) CODES/STANDARDS-CSA/CMVSS
- (IE3) ENERGY MANAGEMENT SYSTEM
- (IB1) CODES STANDARDS/USA
- (120) ELECTRICAL SYSTEM 30 AMP

(IB1) (265) (IE3) (120) (78J)

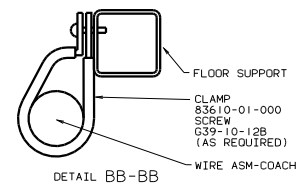
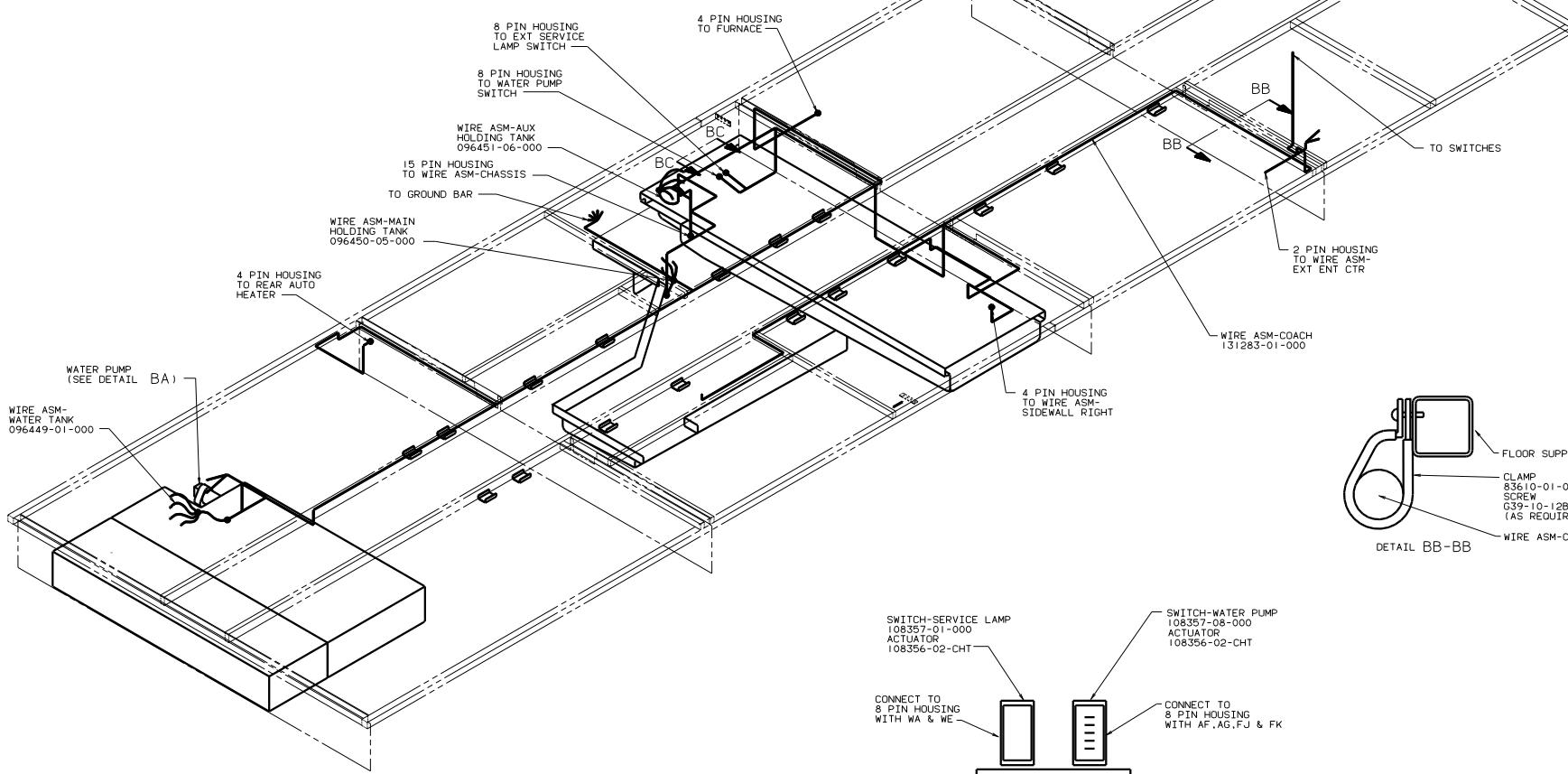
WINNEBAGO 99 G34H

DATE	DATE	UNDESIGNED TOLERANCES ARE:	MATERIAL
DATE	DATE	WHOLE DIM (IN)	
DATE	DATE	ONE-PLACE (IN.XI)	
DATE	DATE	TWO-PLACE (IN.XXX)	
DATE	DATE	MIXED	
DATE	DATE	THIRD WHOLE	
DATE	DATE	PRODUCTION	

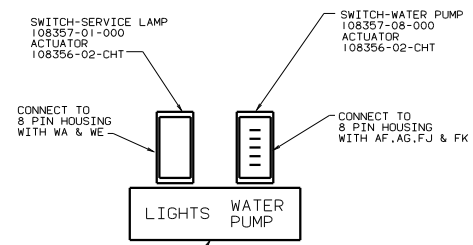
DRAWING TITLE: WIRING INSTL-BODY (BL 110V)
 SHEET 1 OF 2
 SCALE: AS SHOWN
 DATE: 11/11/13
 DRAWN BY: J.E.



DETAIL BA



DETAIL BB-BB



VIEW BC-BC (64R)

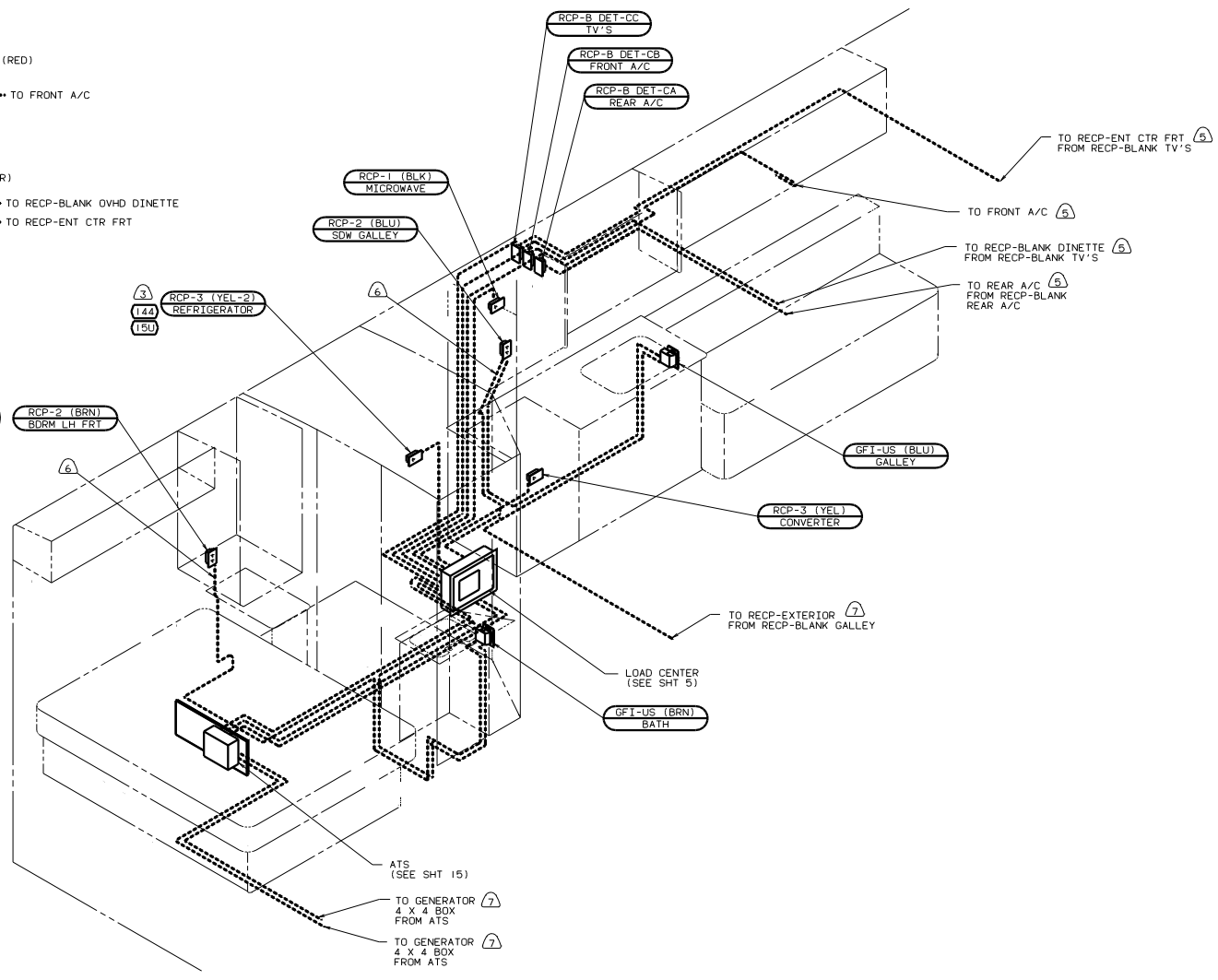
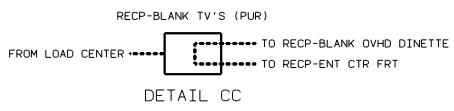
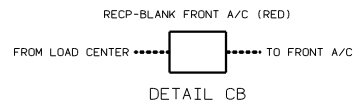
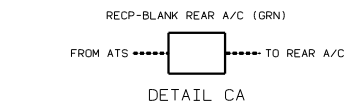
3. WIRES THAT REST ON WIRE TRAYS ARE TO BE TIES DOWN WITH WIRE TIE 8343-02-000.
2. CLAMP TO FLOOR SUPPORT TUBES AS NECESSARY WITH CLAMP 10497-01-000.
1. ALL WIRES TO BE CLAMPED WITH CLAMP 10495-01-000 OR CLIP 80734-02-000 EVERY 700. USE SCREW G67-10-12B UNLESS OTHERWISE SPECIFIED.

NOTES:

- (76C) ENTERTAINMENT CTR/EXT CSETTE
- (64R) EXTERIOR WASH STATION
- (265) CODES/STANDARDS-GSA/CMVSS
- (1D5) ENTERTAINMENT CTR-EXT-W/CD
- (1B1) CODES STANDARDS/USA

FOR ELECTRICAL CALLOUTS SEE DWG NO. 121339-01-000

99 G34H (1B1) (265)	
WIRING INSTL-BODY (BL 12V)	131303
SHEET 2 OF 24	1/E



- (7) WIRE ROUTED BELOW FLOOR. CLAMP TO FLOOR AS NECESSARY WITH CLAMP 10497-01-000.
- (6) ROUTE WIRE IN SIDEWALL.
- (5) WIRE IN ROOF.
4. COVER GROUND WIRE WITH TUBING 8041-02-000.
- (3) LOCATE TOP OF REFRIGERATOR RECEPTACLE 300 ABOVE SHELF.
2. ALL WIRES ARE TO BE CLAMPED WITH CLAMP 10497-05-000 WITHIN 200 OF OUTLET BOXES. USE SCREW 667-10-12B.
1. ALL WIRES TO BE CLAMPED WITH CLAMP 10495-01-000 OR CLIP 80734-02-000 EVERY 700. USE SCREW 667-10-12B UNLESS OTHERWISE SPECIFIED.

(44X)

- (150) REFRIGERATOR/FRZR W/ICEMAKER
- (144) REFRIGERATOR-DOUBLE DOOR
- (44X) BED-QUEEN-SIDEWALL
- (IE3) ENERGY MANAGMNT SYSTEM
- (IB1) CODES STANDARDS/USA
- (150) REFRIGERATOR/FRZR W/ICEMAKER
- (144) REFRIGERATOR-DOUBLE DOOR
- (120) ELECTRICAL SYSTEM 30 AMP

FOR ELECTRICAL TORQUE SPECIFICATIONS SEE DWG NO. 128783-01-000

FOR ELECTRICAL CALLOUTS SEE DWG NO. 121339-01-000

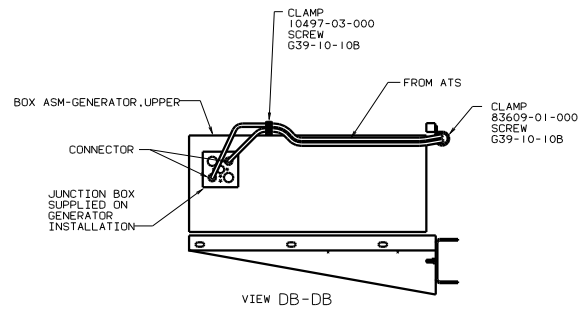
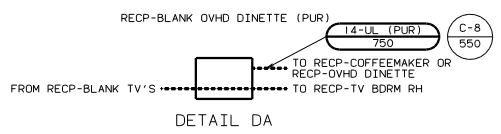
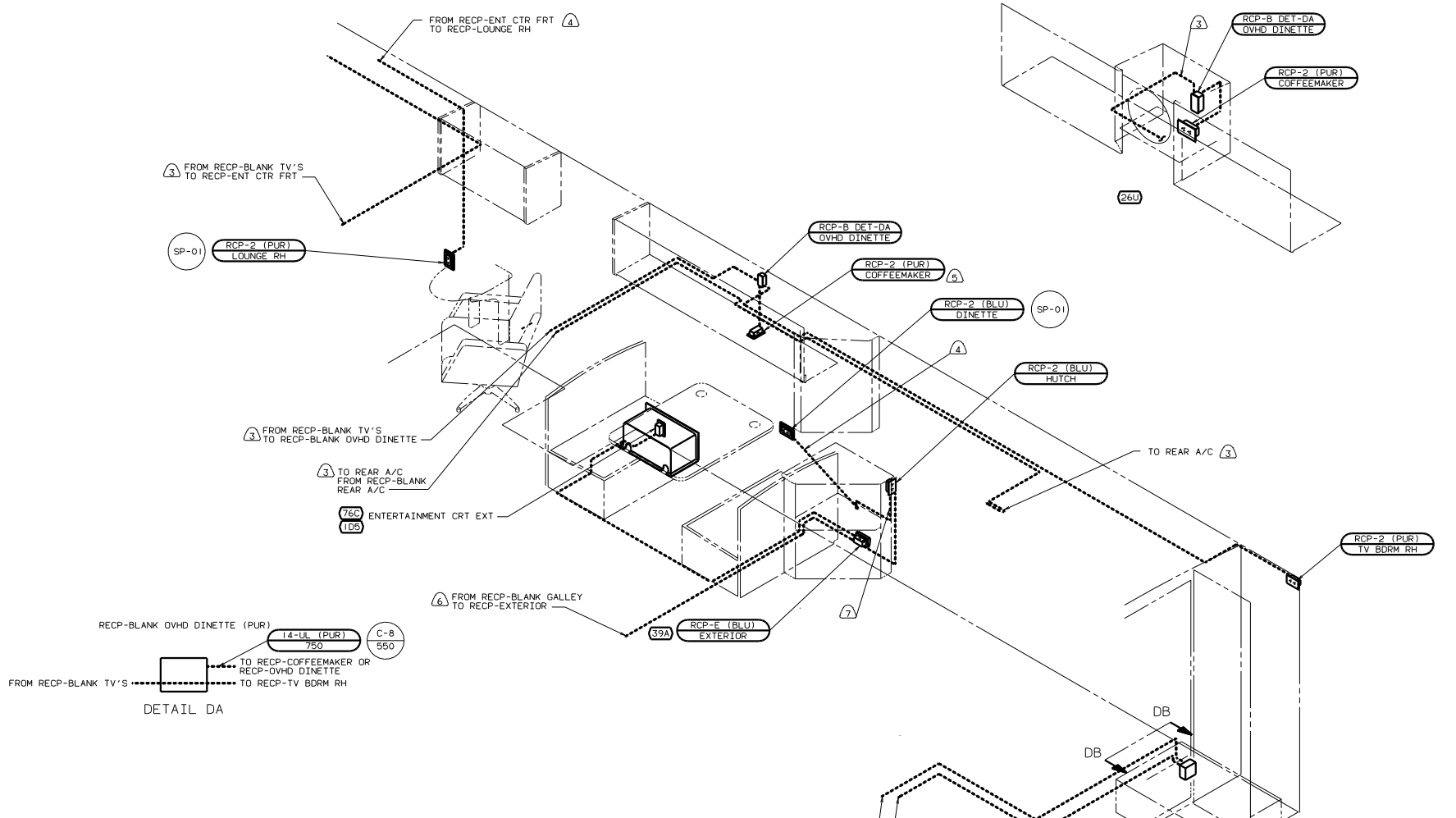
99 G34H (IB1) (I20) (IE3) (44X)

FILE: WIRING INSTL-BODY (110130US)

NO. OF SHEETS: 3 OF 24 SHEET NO. 3

REV: 1.6

131303



- NOTES:
- ⑦ PROTECT WIRES WITH CONDUIT 41953-01-000 IN THIS AREA.
 - ⑥ WIRE ROUTED BELOW FLOOR. CLAMP TO FLOOR AS NECESSARY WITH CLAMP 10497-01-000.
 - ⑤ WITHOUT ②6E
 - ④ WIRE IN SIDEWALL.
 - ③ WIRE IN ROOF.
2. ALL WIRES ARE TO BE CLAMPED WITH CLAMP 10497-05-000 WITHIN 200 OF OUTLET BOXES. USE SCREW G67-10-12B.
1. ALL WIRE TO BE CLAMPED WITH CLAMP 10495-01-000 OR CLIP 80734-02-000 EVERY 700. USE SCREW G67-10-12B UNLESS OTHERWISE SPECIFIED.

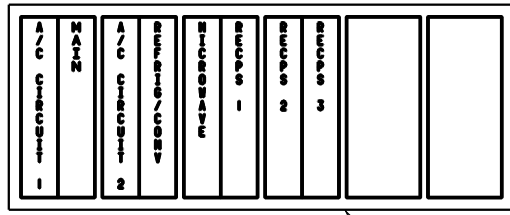
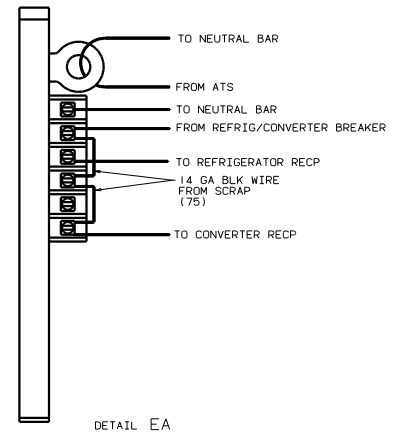
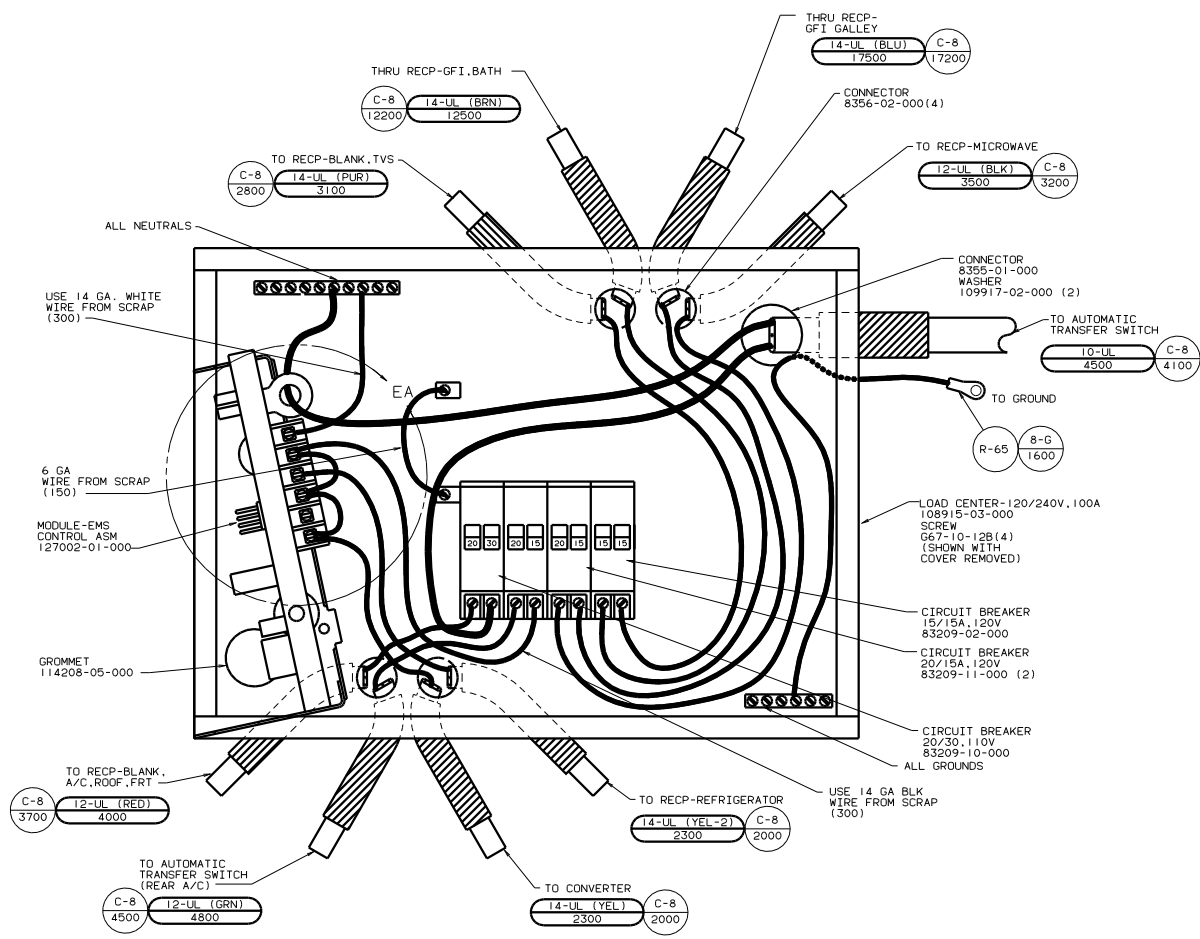
- ⑥ FROM ATS TO GENERATOR 4 X 4 BOX
- ⑥ FROM ATS TO GENERATOR 4 X 4 BOX

- ③9A EXT RECEPTACLE DPLX 120VAC
- ⑦8C ENTERTAINMENT CTR/EXT CSETTE
- ④4X BED-QUEEN-SIDEWALL
- ②6U COFFEE MAKER
- ②6E COFFEE MAKER-WITHOUT
- ①E3 ENERGY MANAGEMNT SYSTEM
- ①D5 ENTERTAINMENT CTR-EXT-W/CD
- ①B1 CODES STANDARDS/USA
- ①2D ELECTRICAL SYSTEM 30 AMP

FOR ELECTRICAL TORQUE SPECIFICATIONS SEE DWG NO. 128783-01-000

FOR ELECTRICAL CALLOUTS SEE DWG NO. 121339-01-000

99 G34H ①B1 ①2D ④4X ①E3	
WIRING INSTL-BODY (110R30US)	131303
SHEET 4 OF 24	1 E



INSTALL LABEL ON FRONT PANEL BELOW BREAKERS BETWEEN MOUNTING HOLES

LABEL 95721-27-000

1. ALL GROUND WIRES TO BE COVERED WITH TUBING 8041-02-000.

NOTES:

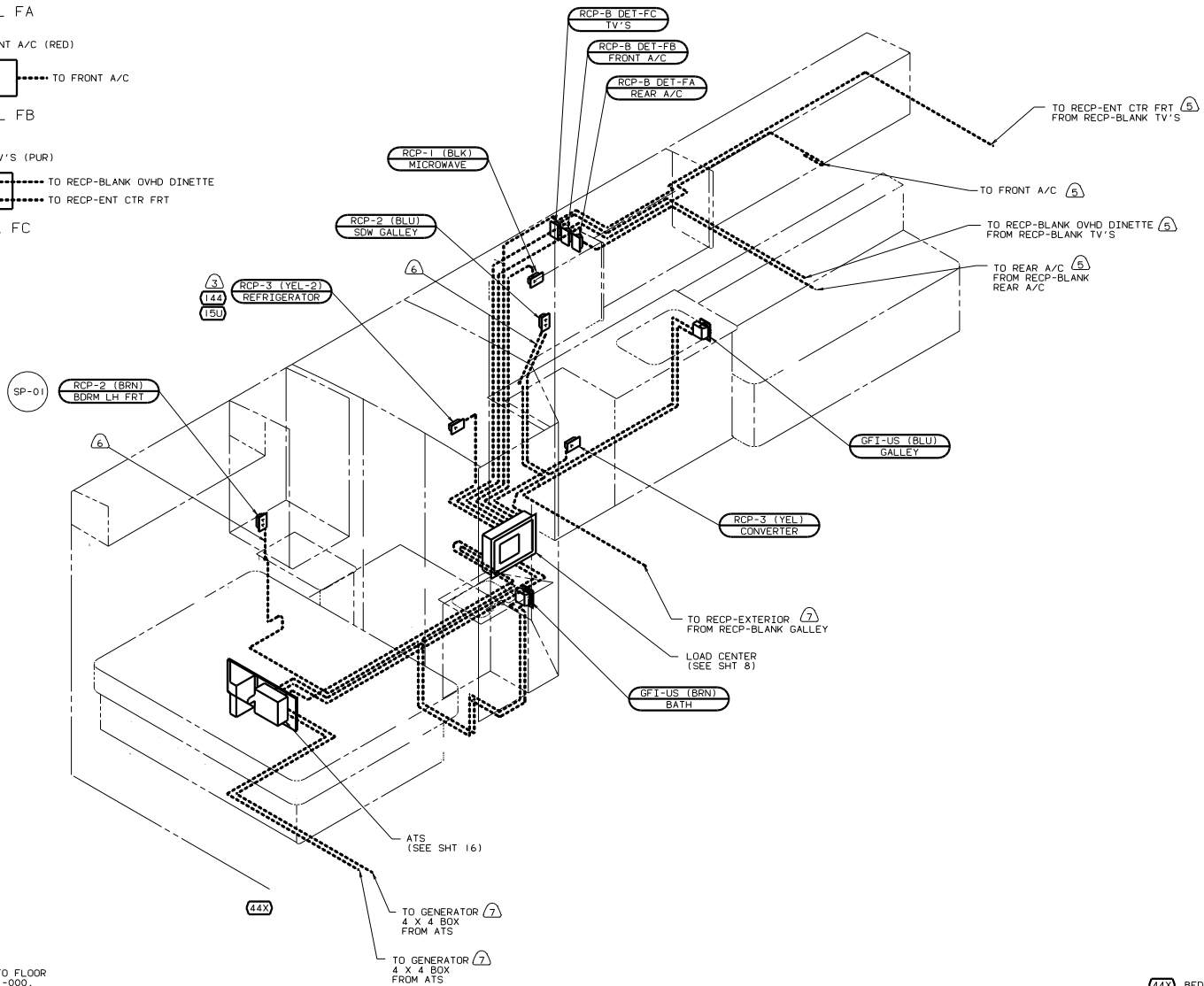
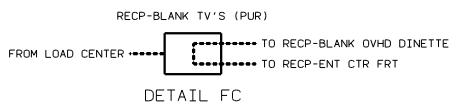
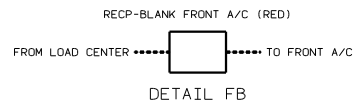
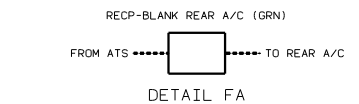
FOR ELECTRICAL TORQUE SPECIFICATIONS SEE DWG NO. 128783-01-000

FOR ELECTRICAL CALLOUTS SEE DWG NO. 121339-01-000

(E3) ENERGY MANAGEMNT SYSTEM
 (1B1) CODES STANDARDS/USA
 (12D) ELECTRICAL SYSTEM 30 AMP

99 G34H (1B1) (12D) (E3)

WIRING INSTL-BODY(30 CC US)
 SHEET 5 of 24



- 7) WIRE ROUTED BELOW FLOOR. CLAMP TO FLOOR AS NECESSARY WITH CLAMP 10497-01-000.
- 6) ROUTE WIRE IN SIDEWALL.
- 5) WIRE IN ROOF.
4. COVER GROUND WIRE WITH TUBING 8041-02-000.
- 3) LOCATE TOP OF REFRIGERATOR RECEPTACLE 300 ABOVE SHELF.
- 2) ALL WIRES ARE TO BE CLAMPED WITH CLAMP 10497-05-000 WITHIN 200 OF OUTLET BOXES. USE SCREW G67-10-12B.
1. ALL WIRES TO BE CLAMPED WITH CLAMP 10495-01-000 OR CLIP 80734-02-000 EVERY 700. USE SCREW G67-10-12B UNLESS OTHERWISE SPECIFIED.

- 44X) BED-QUEEN-SIDEWALL
- IE3) ENERGY MANAGMNT SYSTEM
- IB1) CODES STANDARDS/USA
- IBU) REFRIGERATOR/FRZR W/ICEMAKER
- 144) REFRIGERATOR-DOUBLE DOOR
- 78J) ELECTRICAL SYSTEM - 50 AMP

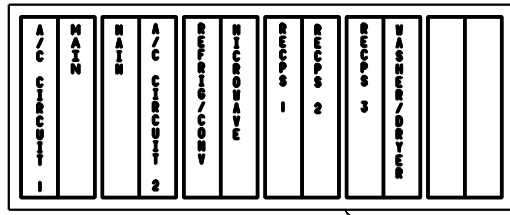
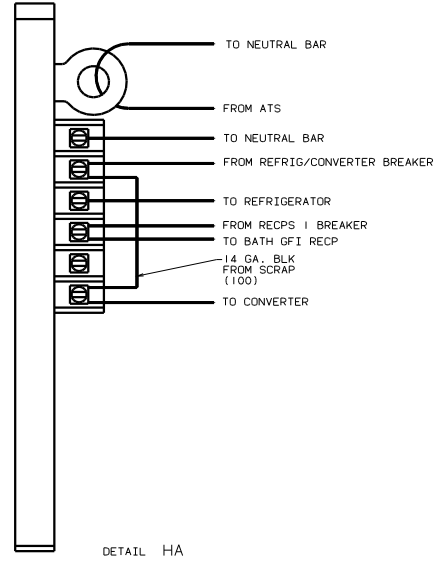
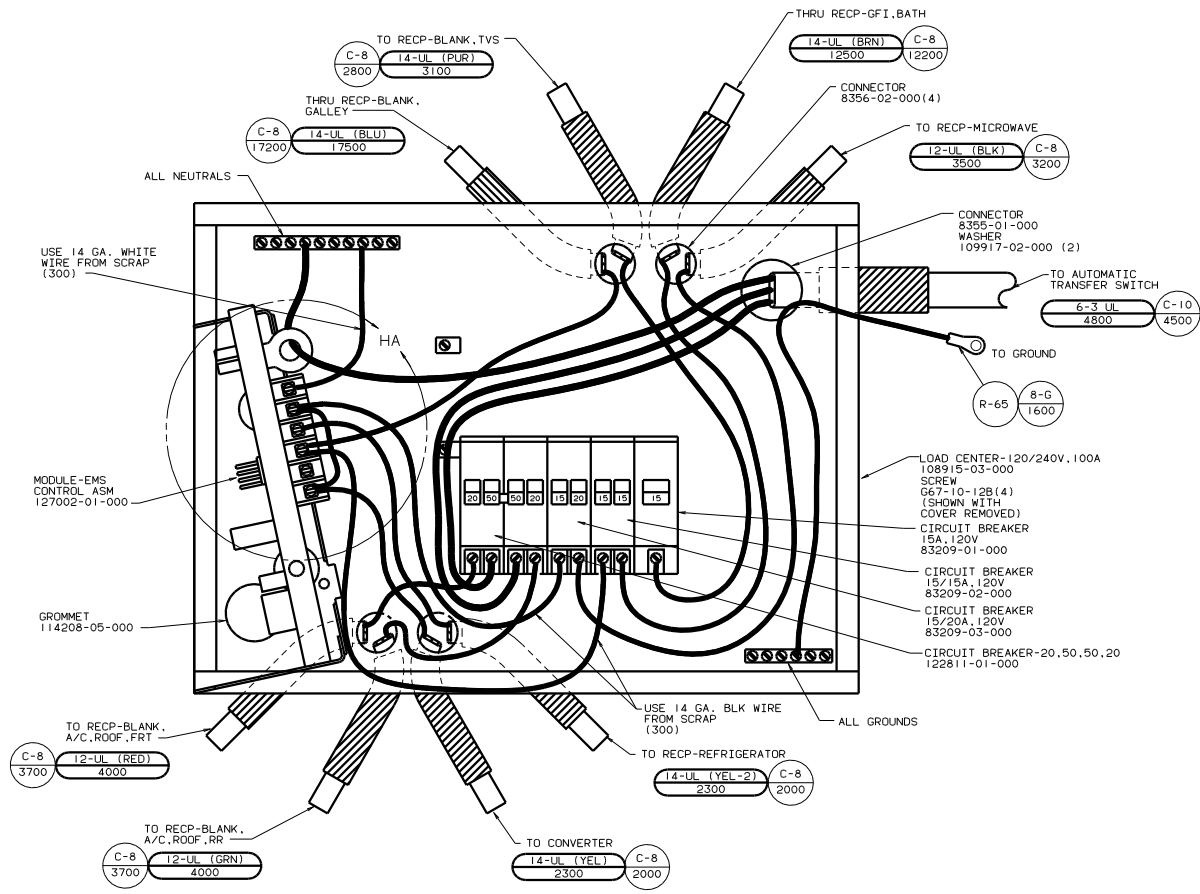
FOR ELECTRICAL TORQUE SPECIFICATIONS SEE DWG NO. 128783-01-000

FOR ELECTRICAL CALLOUTS SEE DWG NO. 121339-01-000

99 G34H (IB1) (78J) (44X) (IE3)

WIRING INSTL-BODY (110150US)

131303



INSTALL LABEL ON FRONT PANEL BELOW BREAKERS BETWEEN MOUNTING HOLES

LABEL 95721-29-000

1. ALL GROUND WIRES TO BE COVERED WITH TUBING 8041-02-000.

NOTES:

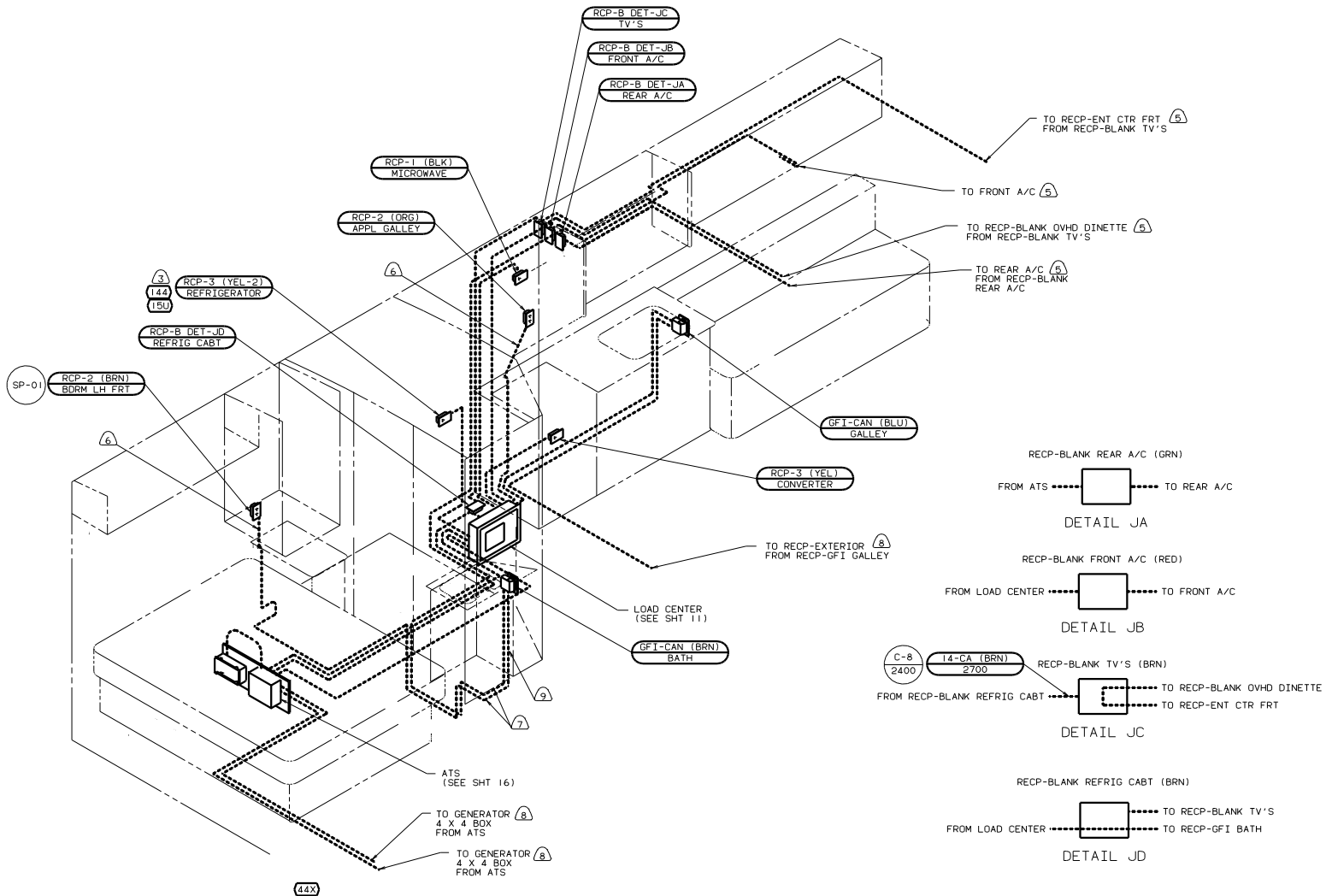
FOR ELECTRICAL TORQUE SPECIFICATIONS SEE DWG NO. 128783-01-000

FOR ELECTRICAL CALLOUTS SEE DWG NO. 121359-01-000

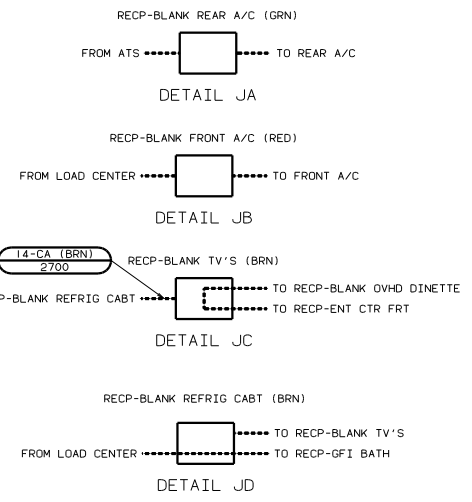
(78J) ELECTRICAL SYSTEM - 50 AMP
 (ES) ENERGY MANAGEMNT SYSTEM
 (1B1) CODES STANDARDS/USA

99 G34H (1B1) (78J) (ES)

WIRING INSTL-BODY (50 LC US)
 SHEET 8 OF 24



- ⑨ PROTECT WIRES WITH CONDUIT 41953-01-000 IN THIS AREA.
- ⑧ WIRE ROUTED BELOW FLOOR. CLAMP TO FLOOR AS NECESSARY WITH CLAMP 10497-01-000.
- ⑦ ROUTE WIRE THRU FLOOR.
- ⑥ WIRE IN SIDEWALL.
- ⑤ WIRE IN ROOF.
- 4. COVER GROUND WIRE WITH TUBING 8041-02-000.
- ③ LOCATE TOP OF REFRIGERATOR RECEPTACLE 300 ABOVE SHELF
- 2. ALL WIRES ARE TO BE CLAMPED WITH CLAMP 10497-05-000 WITHIN 200 OF OUTLET BOXES. USE SCREW 667-10-12B.
- 1. ALL WIRES TO BE CLAMPED WITH CLAMP 10495-01-000 OR CLIP 80734-02-000 EVERY 700. USE SCREW 667-10-12B UNLESS OTHERWISE SPECIFIED.



- ④④X BED-QUEEN-SIDEWALL
- ②65 CODES/STANDARDS-CSA/CMVSS
- ①E3 ENERGY MANAGEMNT SYSTEM
- ①5U REFRIGERATOR/FRZR W/ICEMAKER
- ①44 REFRIGERATOR-DOUBLE DOOR
- ①2D ELECTRICAL SYSTEM 30 AMP

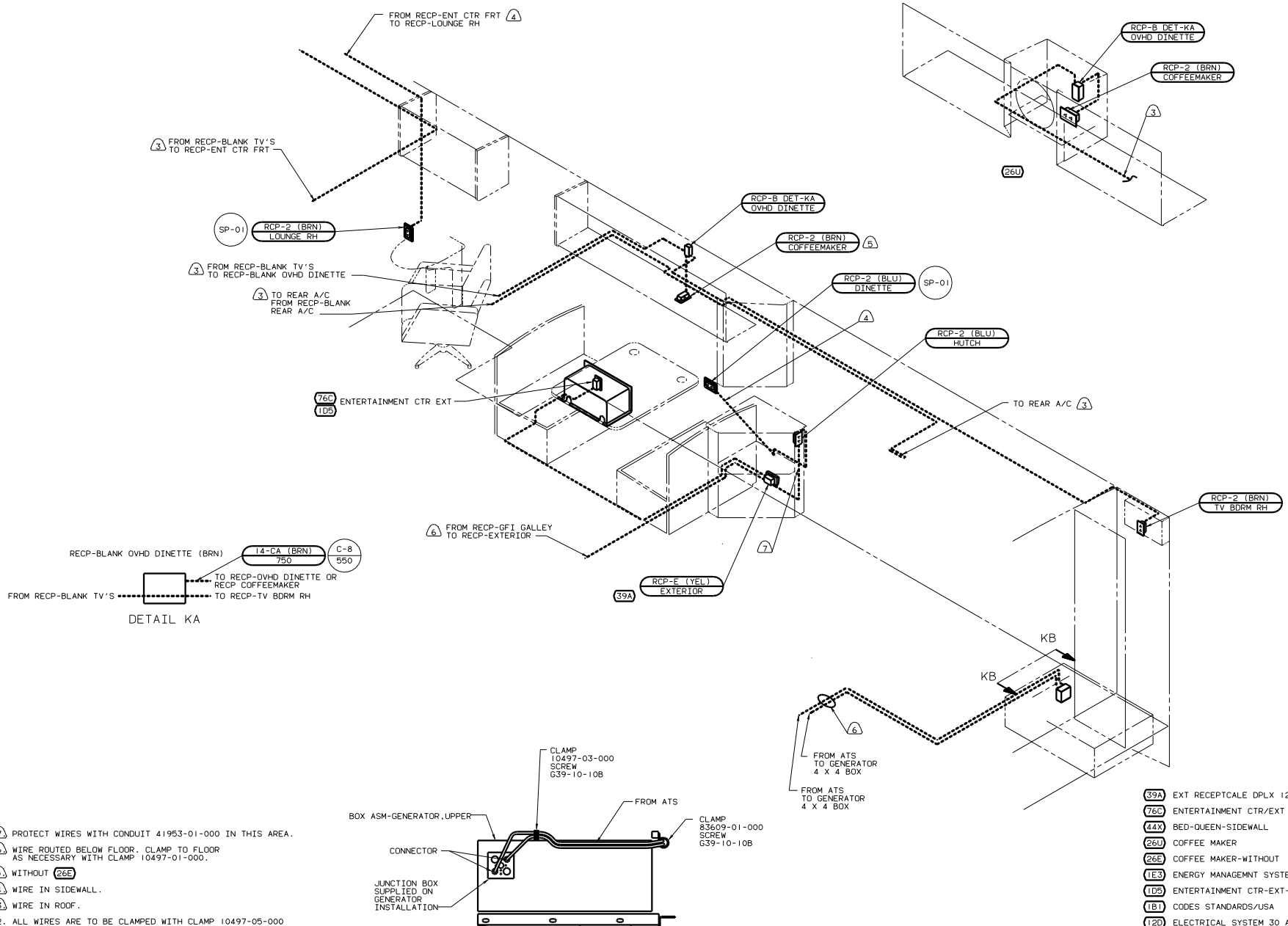
FOR ELECTRICAL TORQUE SPECIFICATIONS SEE DWG NO. 128783-01-000

X-X FOR ELECTRICAL CALLOUTS SEE DWG NO. 121339-01-000

99 G34H ②65 ①2D ④④X ①E3

WIRING INSTL-BODY(110130CAN)

131303



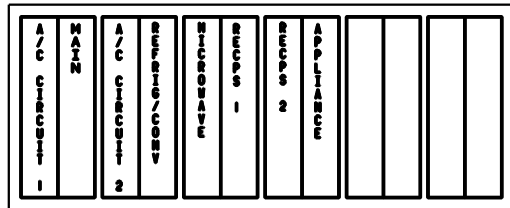
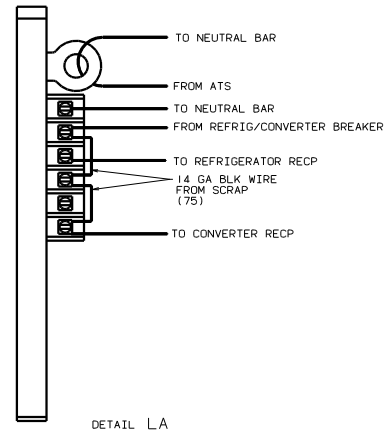
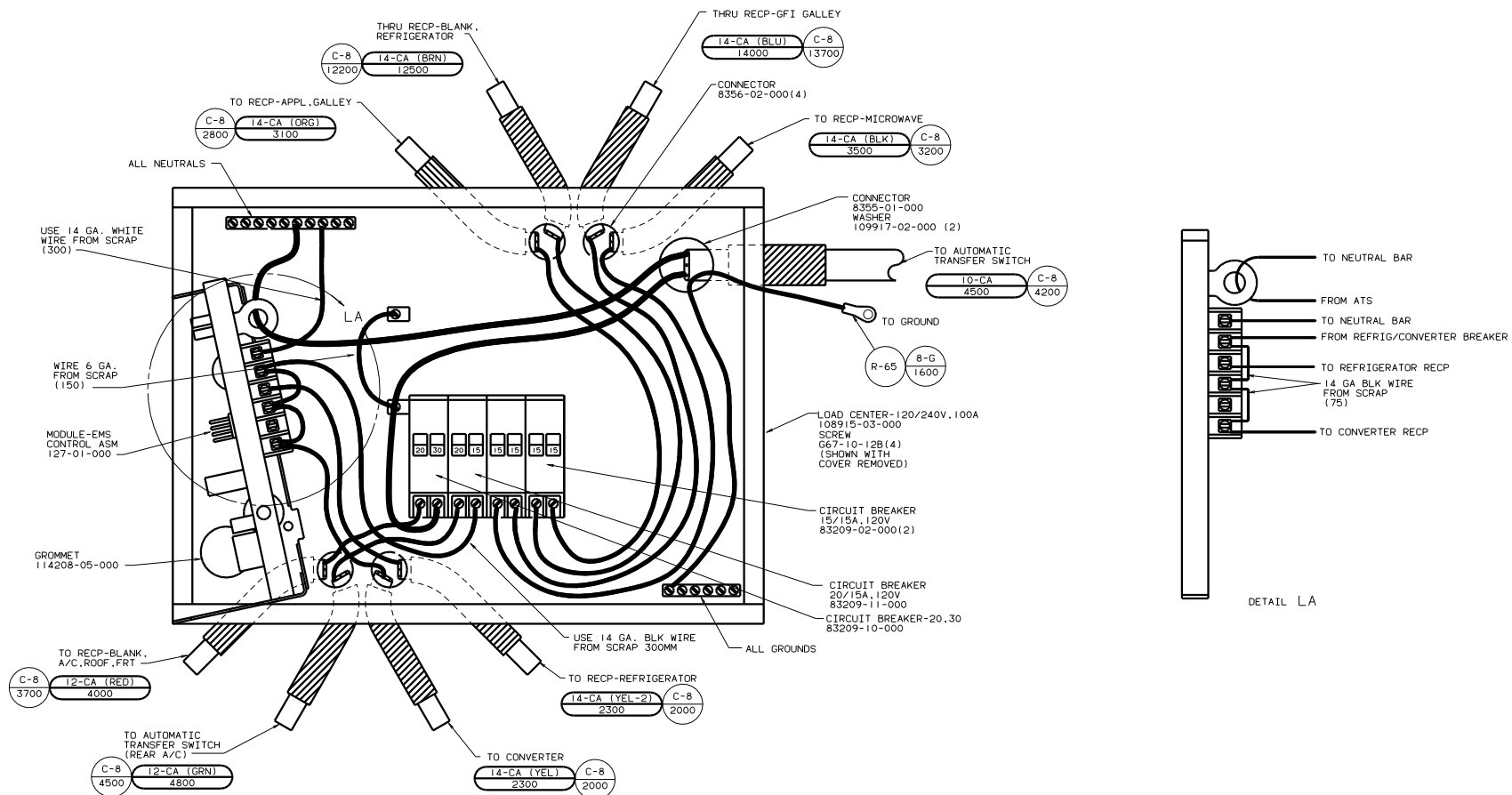
- ⑦ PROTECT WIRES WITH CONDUIT 41953-01-000 IN THIS AREA.
 - ⑥ WIRE ROUTED BELOW FLOOR. CLAMP TO FLOOR AS NECESSARY WITH CLAMP 10497-01-000.
 - ⑤ WITHOUT 26U
 - ④ WIRE IN SIDEWALL.
 - ③ WIRE IN ROOF.
2. ALL WIRES ARE TO BE CLAMPED WITH CLAMP 10495-01-000 WITHIN 200 OF OUTLET BOXES. USE SCREW G67-10-12B.
1. ALL WIRE TO BE CLAMPED WITH CLAMP 10495-01-000 OR CLIP 80734-02-000 EVERY 700. USE SCREW G67-10-12B UNLESS OTHERWISE SPECIFIED.

- 39A EXT RECEPTACLE DPLX 120VAC
- 76C ENTERTAINMENT CTR/EXT CSETTE
- 44X BED-QUEEN-SIDEWALL
- 26U COFFEE MAKER
- 26E COFFEE MAKER-WITHOUT
- 1E3 ENERGY MANAGEMNT SYSTEM
- 1D5 ENTERTAINMENT CTR-EXT-W/CD
- 1B1 CODES STANDARDS/USA
- 12D ELECTRICAL SYSTEM 30 AMP

FOR ELECTRICAL TORQUE SPECIFICATIONS SEE DWG NO. 128783-01-000	X-X	FOR ELECTRICAL CALLOUTS SEE DWG NO. 121339-01-000
----------------------------------------------------------------	-----	---------------------------------------------------

99 G34H 265 12D 1E3 44X

FILE NO.	131303
DATE	11/03/00
REV	1
BY	JL
CHECKED	10/24/00
APP'D	



INSTALL LABEL ON FRONT PANEL BELOW BREAKERS BETWEEN MOUNTING HOLES

LABEL 95721-28-000

- (265) CODES/STANDARDS-CSA/CMVSS
- (IE3) ENERGY MANEMNT SYSTEM
- (120) ELECTRICAL SYSTEM 30 AMP

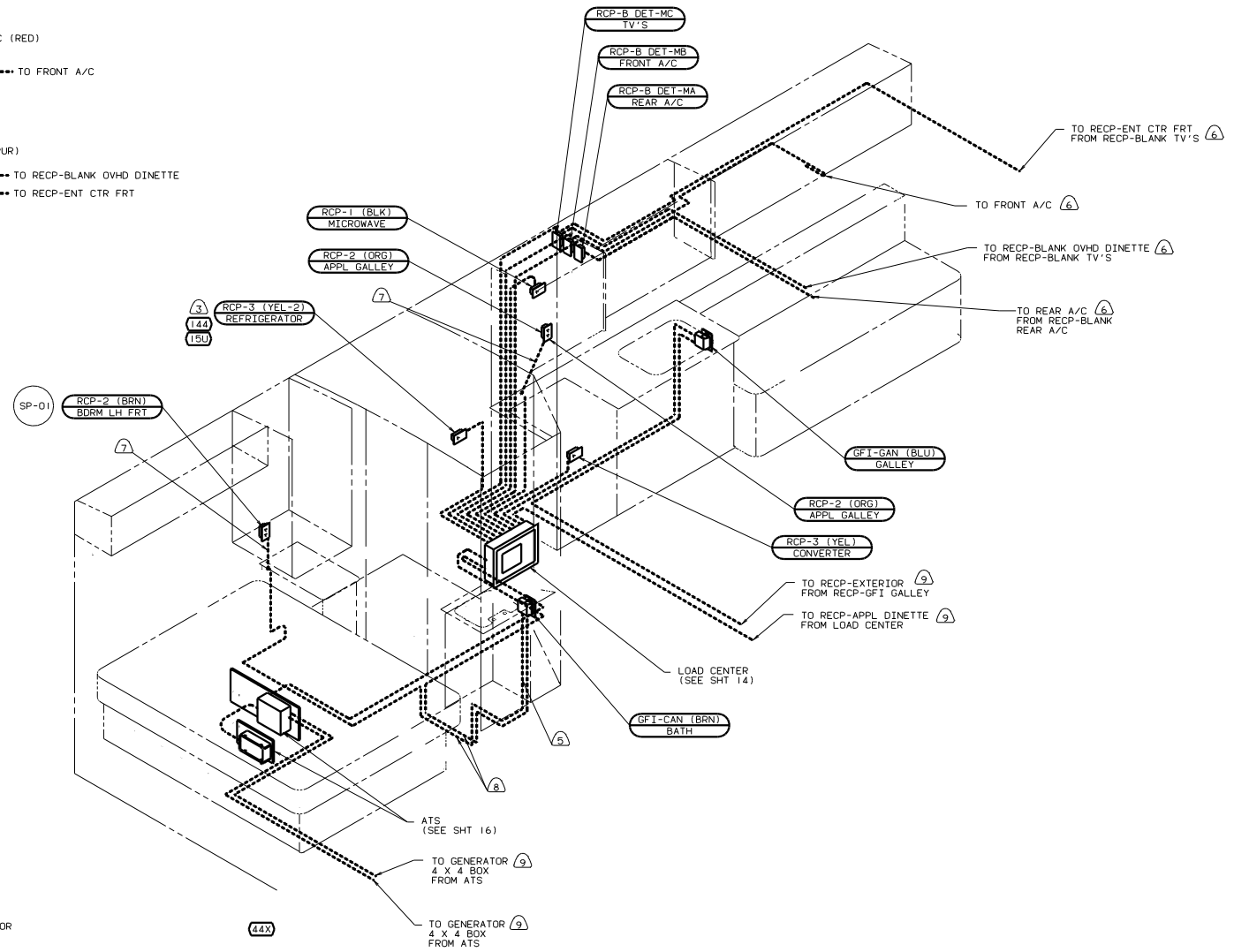
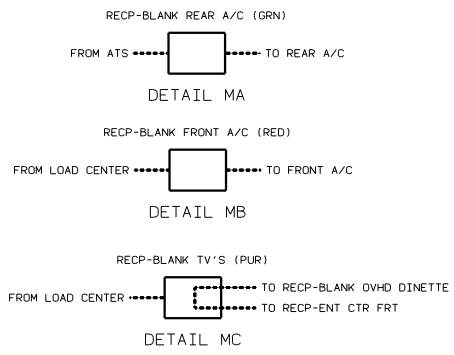
99 G34H (265) (120) (IE3)

FOR ELECTRICAL TORQUE SPECIFICATIONS SEE DWG NO. 128783-01-000	X-X	FOR ELECTRICAL CALLOUTS SEE DWG NO. 121339-01-000
----------------------------------------------------------------	-----	---------------------------------------------------

TITLE	WIRING INSTL-BODY(30 CC CAN)
NO. OF SHEETS	11 of 24
SHEET NO.	11
DWG NO.	131303

1. ALL GROUND WIRES TO BE COVERED WITH TUBING 8041-02-000.

NOTES:



- 9) WIRE ROUTED BELOW FLOOR. CLAMP TO FLOOR AS NECESSARY WITH CLAMP 10497-01-000.
- 8) ROUTE WIRE IN FLOOR.
- 7) WIRE THRU SIDEWALL.
- 6) WIRE IN ROOF.
- 5) PROTECT WIRES WITH CONDUIT 41953-01-000 IN THIS AREA.
- 4) COVER GROUND WIRE WITH TUBING 8041-02-000.
- 3) LOCATE TOP OF REFRIGERATOR RECEPTACLE 300 ABOVE SHELF.
2. ALL WIRES ARE TO BE CLAMPED WITH CLAMP 10497-05-000 WITHIN 200 OF OUTLET BOXES. USE SCREW 667-10-12B.
1. ALL WIRES TO BE CLAMPED WITH CLAMP 10495-01-000 OR CLIP 80734-02-000 EVERY 700. USE SCREW 667-10-12B UNLESS OTHERWISE SPECIFIED.

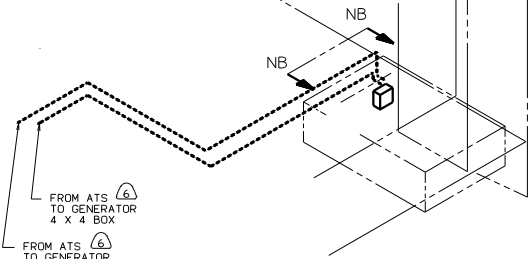
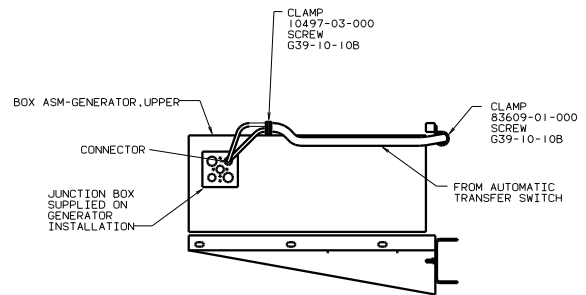
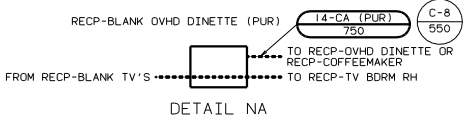
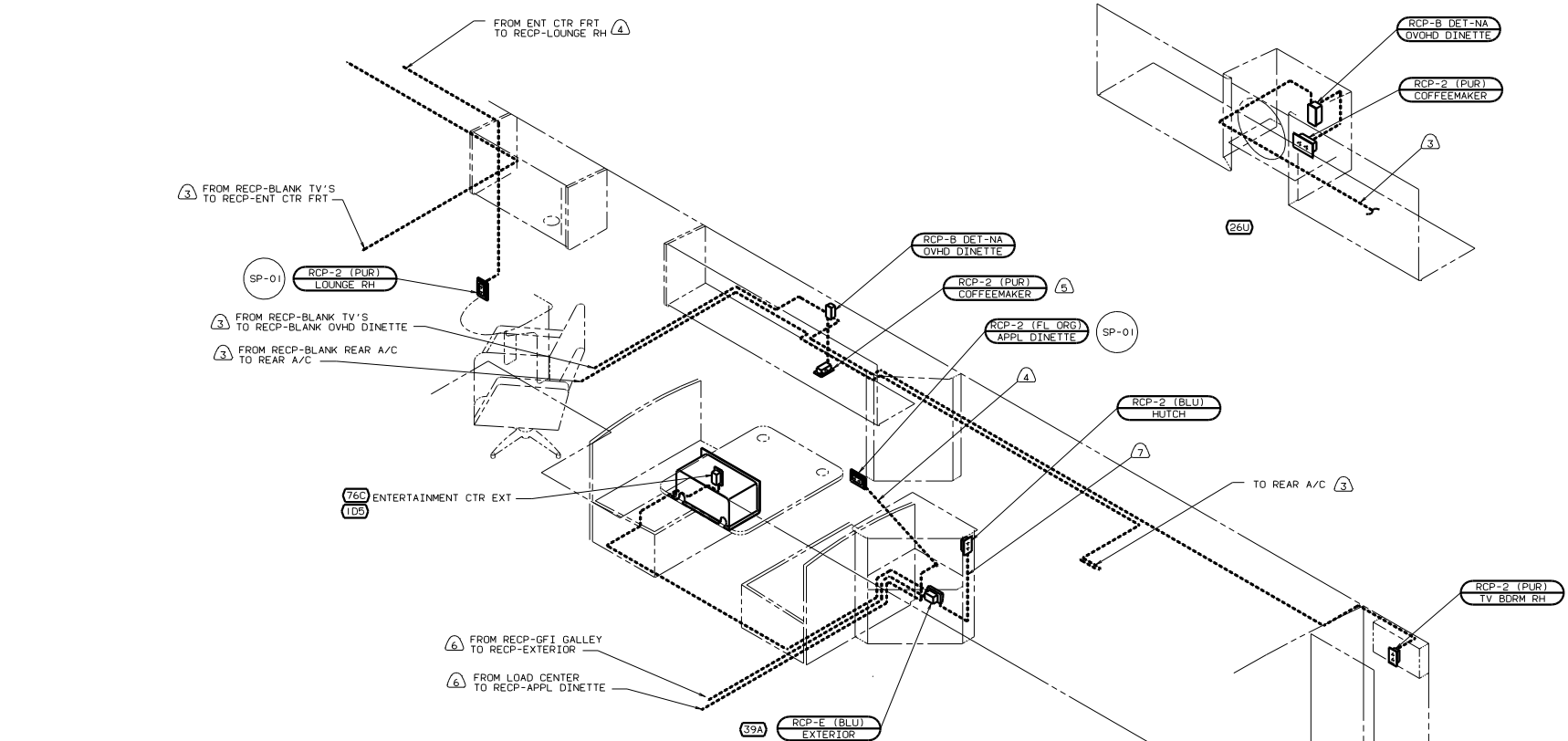
- 78) ELECTRICAL SYSTEM - 50 AMP
- 44X) BED-QUEEN-SIDEWALL
- 265) CODES/STANDARDS-CSA/CMVSS
- 1E3) ENERGY MANAGEMNT SYSTEM
- 15U) REFRIGERATOR/FRZR W/ICEMAKER
- 144) REFRIGERATOR-DOUBLE DOOR

FOR ELECTRICAL TORQUE SPECIFICATIONS SEE DWG NO. 128783-01-000

FOR ELECTRICAL CALLOUTS SEE DWG NO. 121339-01-000

99 G34H 265 78J 44X 1E3

TITLE	WIRING INSTL-BODY(110150CAN)
SCALE	1:1
SHEET	12 OF 24
DWG NO.	131303



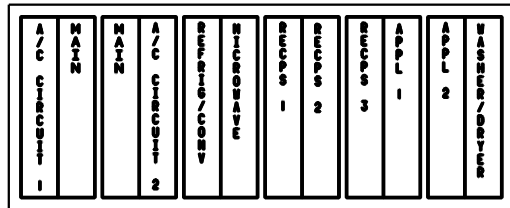
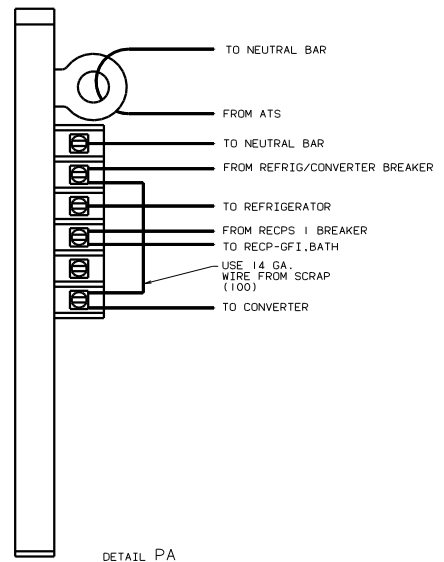
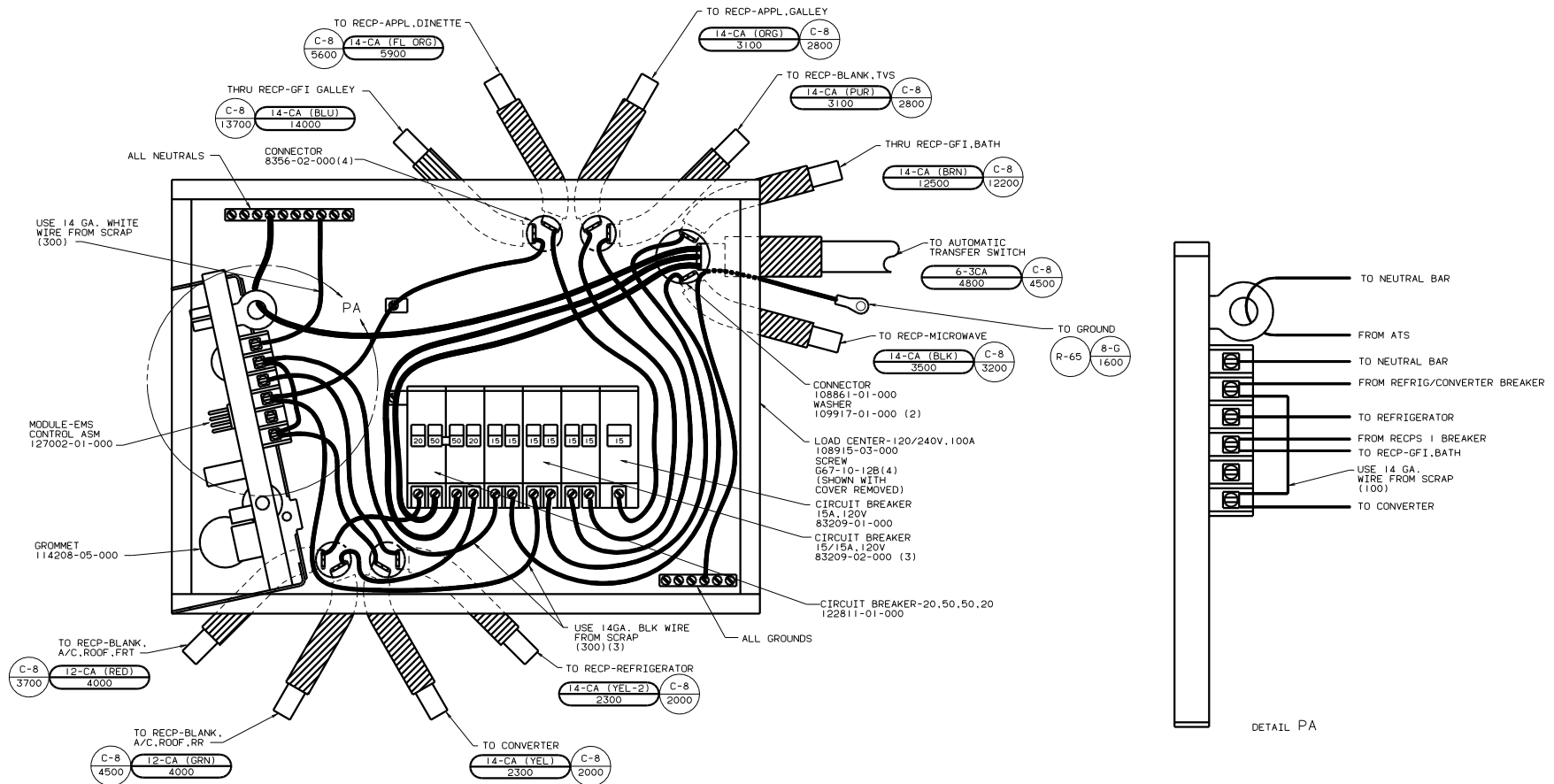
- 39A EXT RECEPTACLE DPLX 120VAC
- 78J ELECTRICAL SYSTEM - 50 AMP
- 44X BED-QUEEN-SIDEWALL
- 26U COFFEE MAKER
- 26E COFFEE MAKER-WITHOUT
- 26S CODES/STANDARDS-CSA/CMVSS
- 1E3 ENERGY MANEMNT SYSTEM

- 7 PROTECT WIRES WITH CONDUIT 41953-01-000 IN THIS AREA.
 - 6 WIRE ROUTED BELOW FLOOR. CLAMP TO FLOOR AS NECESSARY WITH CLAMP 10497-01-000.
 - 5 WITHOUT 26E
 - 4 WIRE IN SIDEWALL.
 - 3 WIRE IN ROOF.
2. ALL WIRES ARE TO BE CLAMPED WITH CLAMP 10495-01-000 WITHIN 200 OF OUTLET BOXES. USE SCREW G67-10-12B.
1. ALL WIRE TO BE CLAMPED WITH CLAMP 10495-01-000 OR CLIP 80734-02-000 EVERY 700. USE SCREW G67-10-12B UNLESS OTHERWISE SPECIFIED.

FOR ELECTRICAL TORQUE SPECIFICATIONS SEE DWG NO. 128783-01-000	(X-X)	FOR ELECTRICAL CALLOUTS SEE DWG NO. 121339-01-000
----------------------------------------------------------------	-------	---------------------------------------------------

99G34H (26S) (78J) (44X) (1E3)

WIRING INSTL - BODY (110R50CAN)	131303
---------------------------------	--------



INSTALL LABEL ON FRONT PANEL BELOW BREAKERS BETWEEN MOUNTING HOLES

LABEL 95721-30-000

1. ALL GROUND WIRES TO BE COVERED WITH TUBING 8041-02-000.

NOTES:

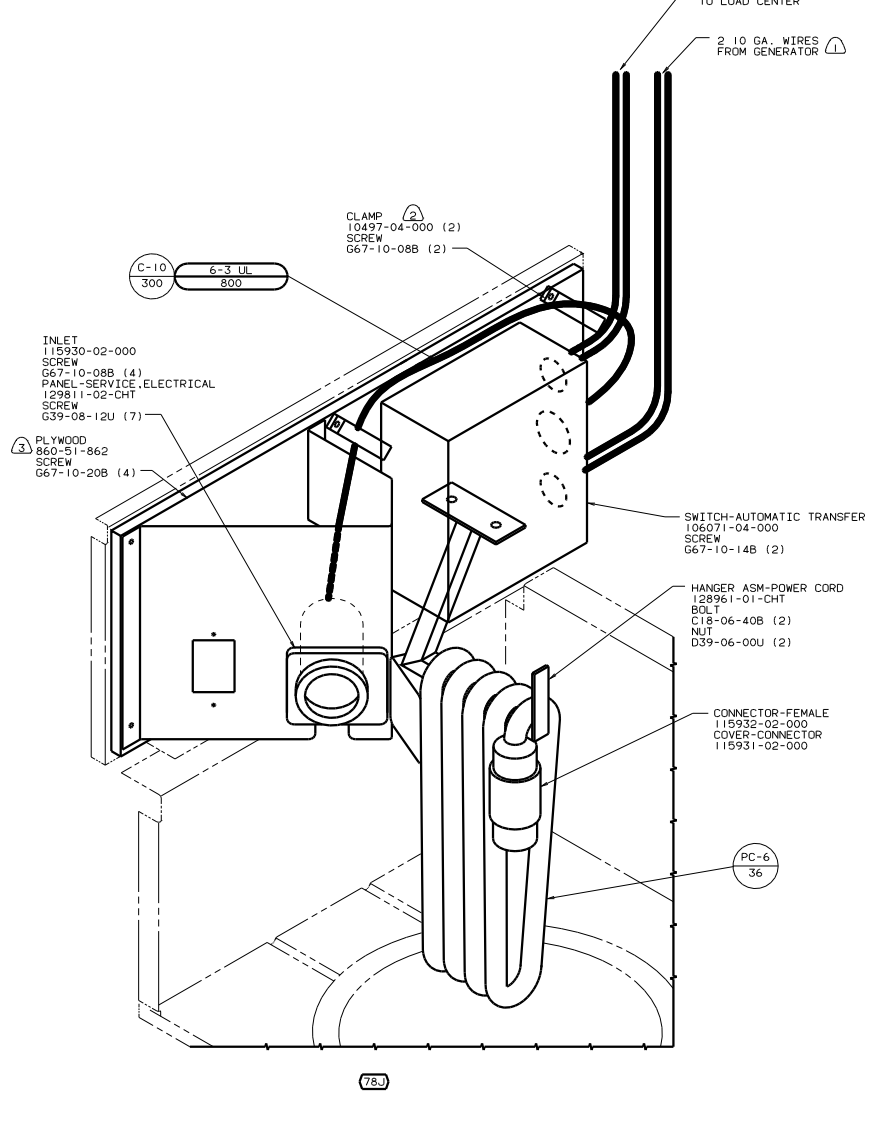
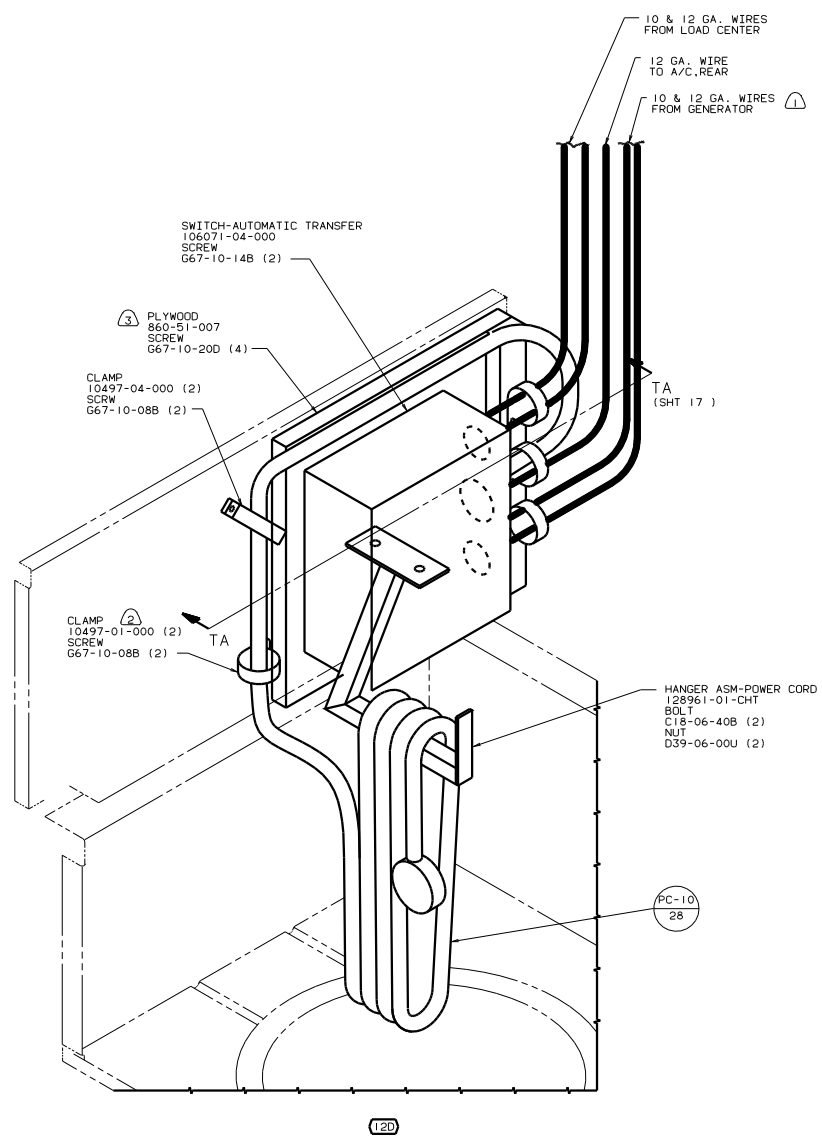
FOR ELECTRICAL TORQUE SPECIFICATIONS SEE DWG NO. 128783-01-000

FOR ELECTRICAL CALLOUTS SEE DWG NO. 121339-01-000

(78J) ELECTRICAL SYSTEM - 50 AMP
 (265) CODES/STANDARDS-CSA/CMVSS
 (IE3) ENERGY MANAGEMENT SYSTEM

99 G34H (265) (78J) (IE3)

TITLE: WIRING INSTL-BODY (50 CC CAN)
 SHEET 14 OF 24



- ⚠ PAINT EXPOSED SURFACES BLACK 106112-01-000.
- ② MOUNT FLUSH WITH BOTTOM OF BOARD.
- ⚠ WITH GENERATOR.

NOTES:

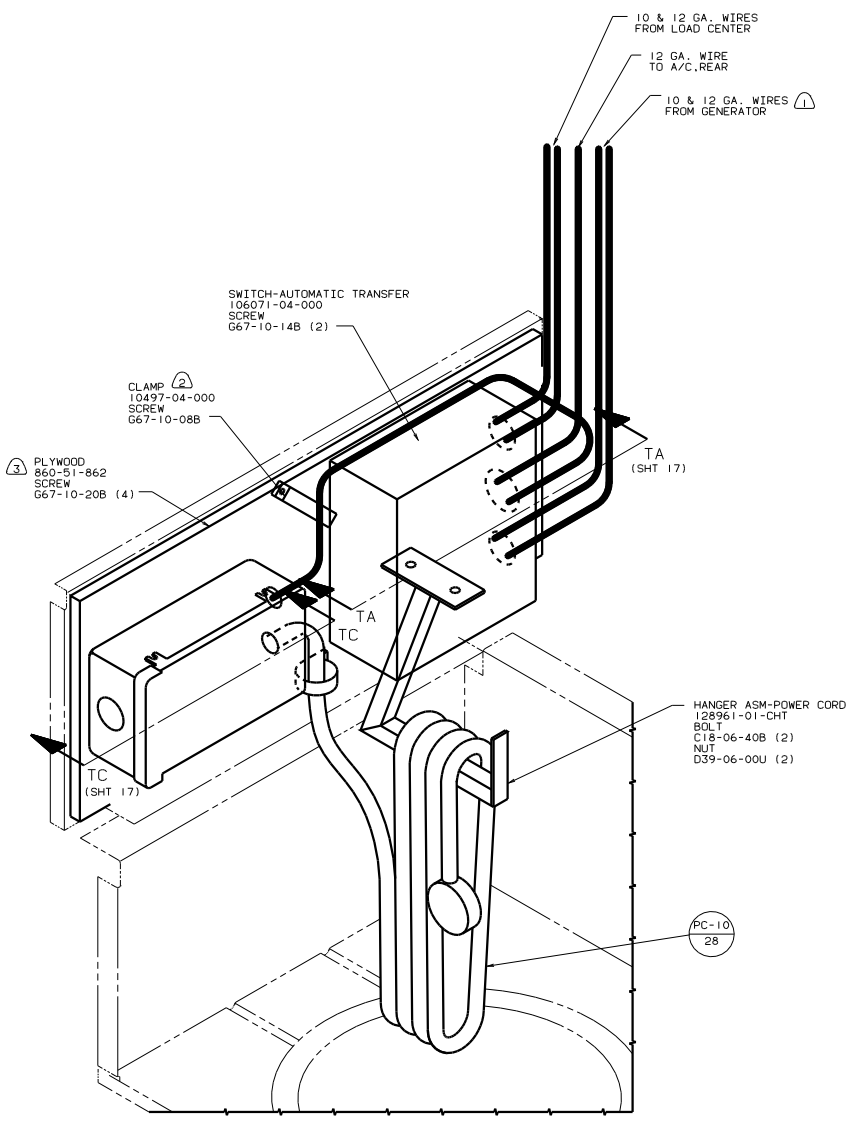
- 78J ELECTRICAL SYSTEM - 50 AMP
- 1B1 CODES STANDARDS/USA
- 120 ELECTRICAL SYSTEM 30 AMP

99 G34H 1B1

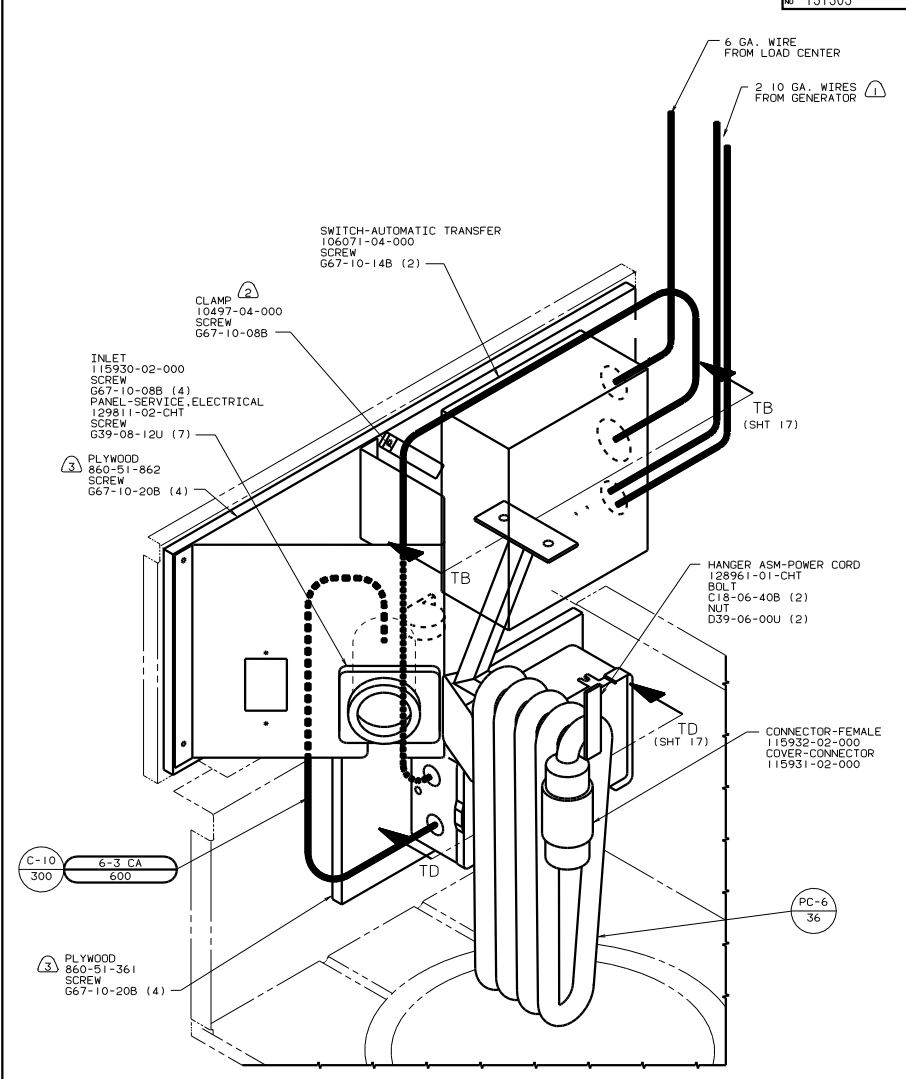
FOR ELECTRICAL TORQUE SPECIFICATIONS SEE DWG NO. 126783-01-000

FOR ELECTRICAL CALLOUTS SEE DWG NO. 121339-01-000

WIRING INSTL-BODY (ATS/US)
SHEET 15 OF 24



12D



78J

- ③ PAINT EXPOSED SURFACES BLACK 106112-01-000.
- ② MOUNT FLUSH WITH BOTTOM OF BOARD.
- ① WITH GENERATOR.

FOR ELECTRICAL TORQUE SPECIFICATIONS SEE DWG NO. 128783-01-000

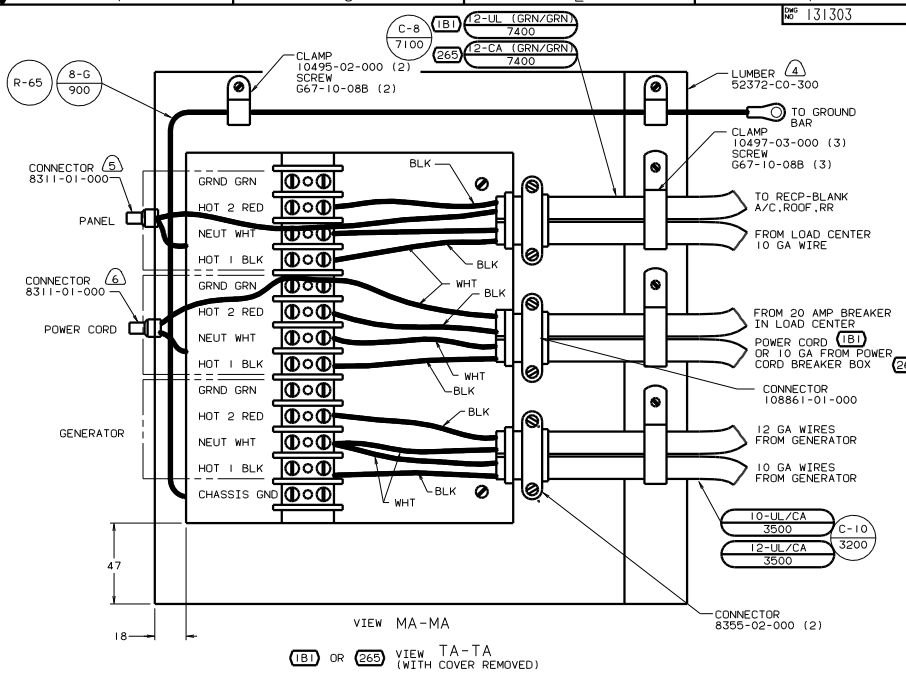
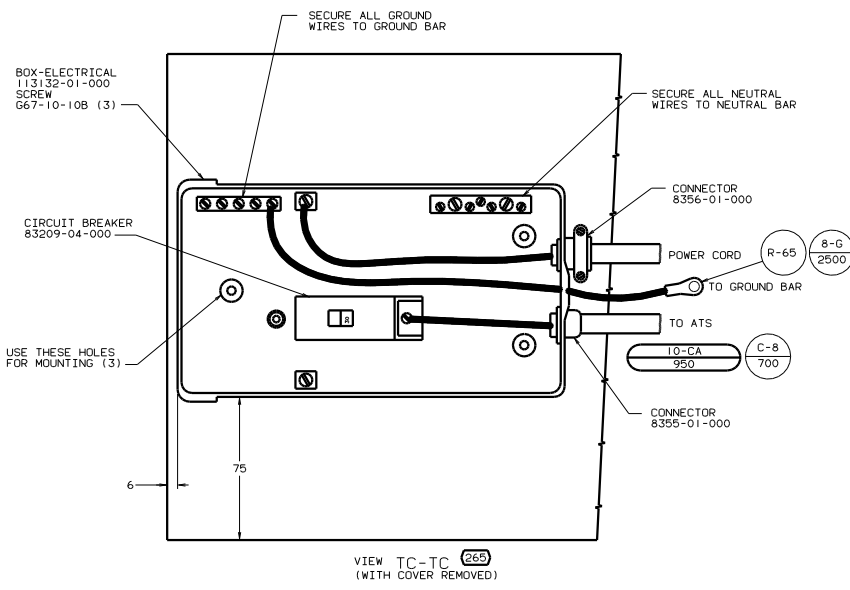
FOR ELECTRICAL CALLOUTS SEE DWG NO. 121339-01-000

- 78J ELECTRICAL SYSTEM - 50 AMP
- 265 CODES/STANDARDS-CSA/CMVSS
- 12D ELECTRICAL SYSTEM 30 AMP

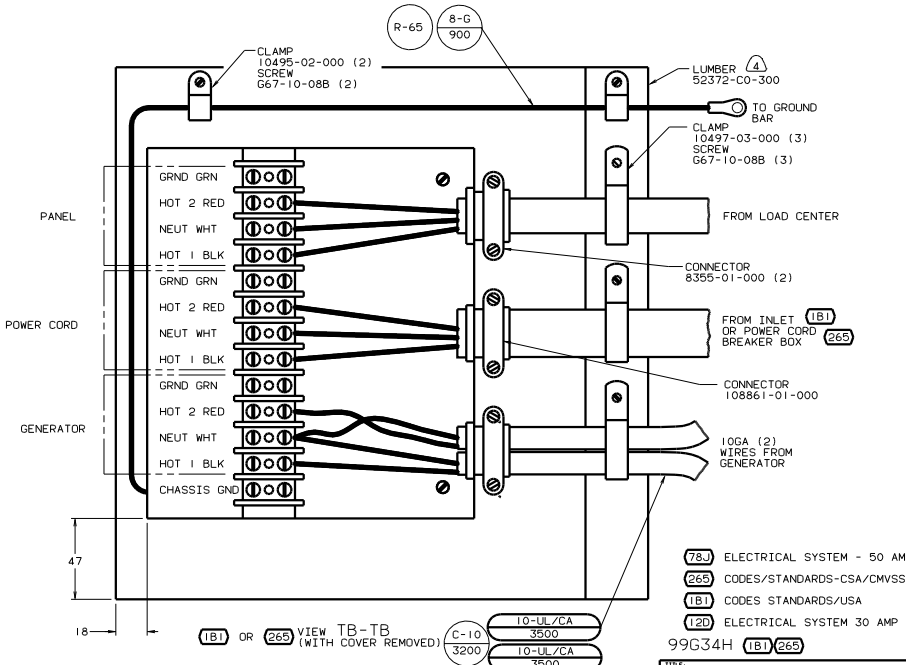
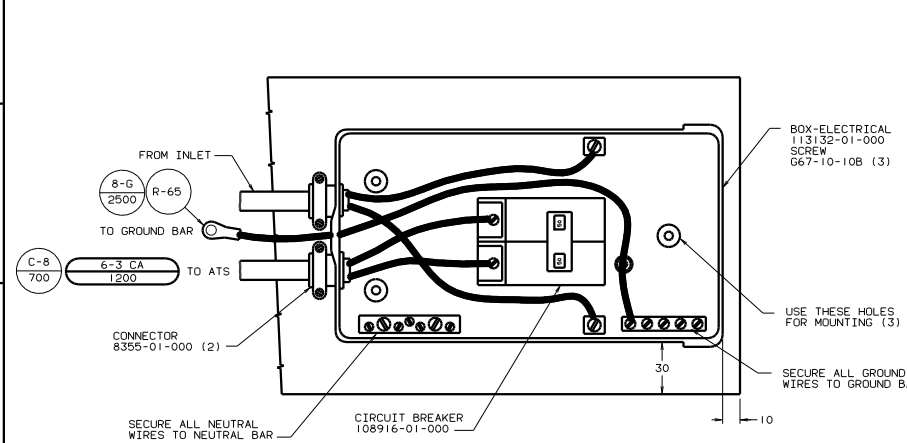
99G34H 265

WIRING INSTL - BODY (ATS/CAN)

131303



(12D) ELECTRICAL SYSTEM 30 AMP

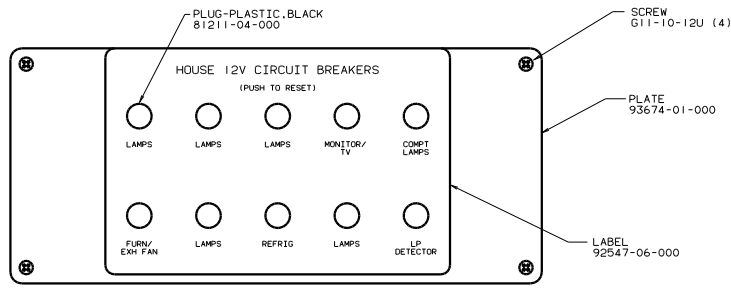


(78J) ELECTRICAL SYSTEM - 50 AMP

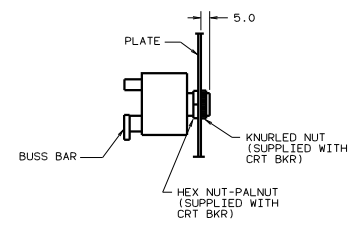
- 6. FOR THIS CONNECTION REMOVE NEUTRAL WIRE MARKED BLUE FROM CONNECTIONS MARKED POWER CORD.
- 5. FOR THIS CONNECTION REMOVE NEUTRAL WIRE MARKED BLUE FROM CONNECTIONS MARKED PANEL.
- 4. PAINT EXPOSED SURFACE BLACK WITH 106112-01-000
- 3. ALL 110V STRANDED WIRE W/O TERMINALS TO BE STRIPPED 10MM AND SOLDER DIPPED.
- 2. GROUND WIRES NOT SHOWN FOR CLARITY.
- 1. ALL WIRES TO BE CLAMPED WITH IN 200 OF BOX.

(78J) ELECTRICAL SYSTEM - 50 AMP
 (265) CODES/STANDARDS-CSA/CMVSS
 (1B1) CODES STANDARDS/USA
 (12D) ELECTRICAL SYSTEM 30 AMP
 99G34H (1B1)(265)

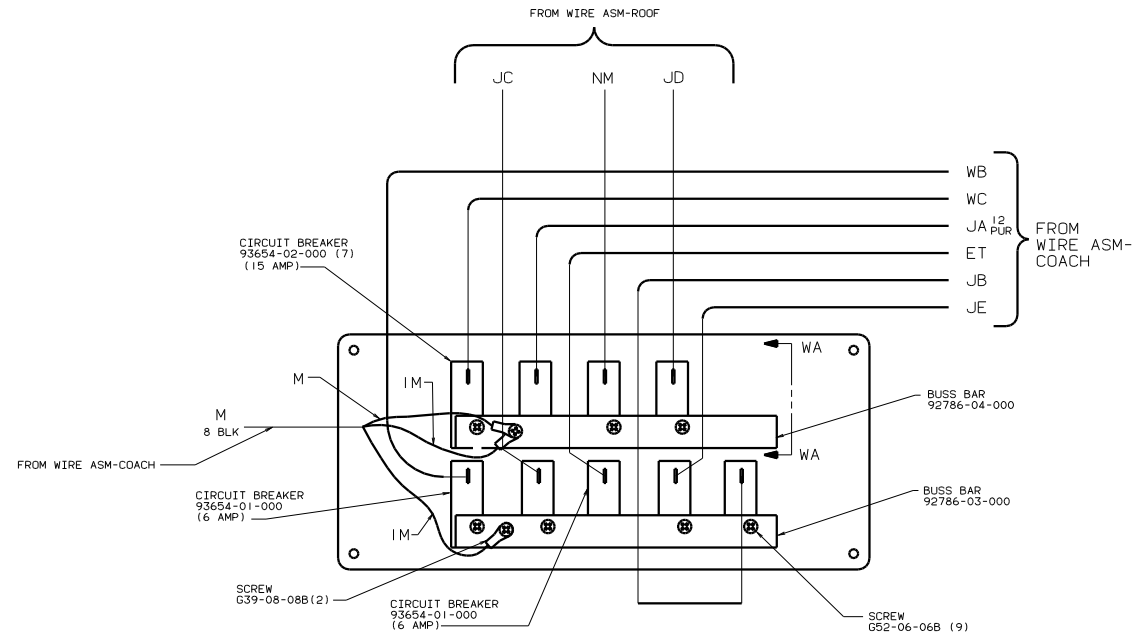
WIRING INSTL - BODY (ATS)
 SHEET 17 OF 24
 131303



CIRCUIT BREAKER
(FRONT VIEW)



SECTION WA-WA

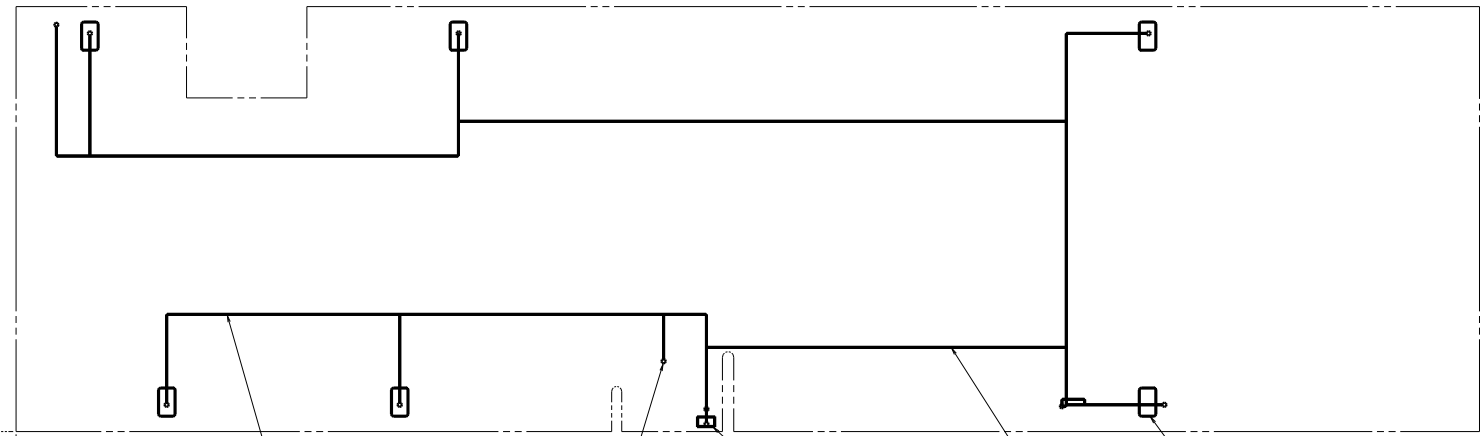
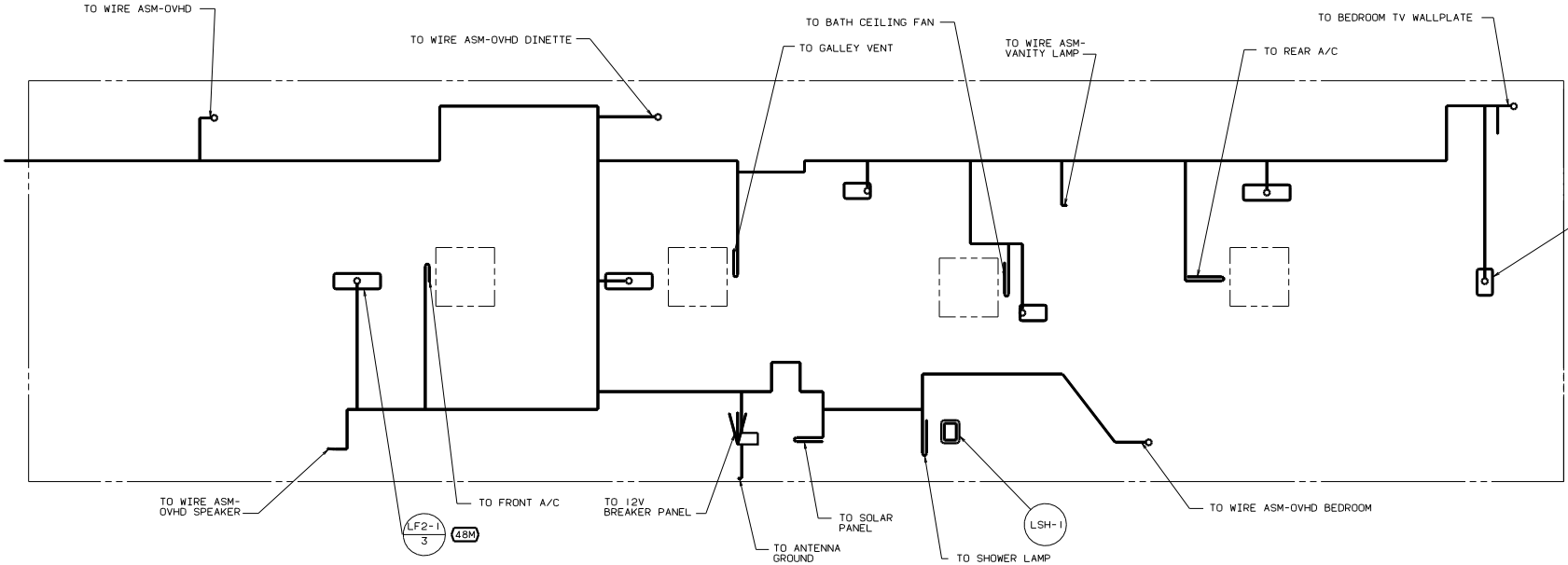


CIRCUIT BREAKER
(BACK VIEW)

FOR ELECTRICAL
TORQUE
SPECIFICATIONS
SEE DWG NO.
128783-01-000

(265) CODES/STANDARDS-CSA/CMVSS
(1B1) CODES STANDARDS/USA
99 G34H (1B1) (265)

TITLE		WIRING INSTL-BODY(12 BP)	
NO	REV	DATE	BY
1	1		
SHEET 20 of 24		DWG NO. 131303	



2. LAMPS TO BE MOUNTED WITH SWITCH OUTBOARD AND 75 +/- 20 FROM EDGE OF FLOOR.

⚠ WIRE ASM ROUTED IN FLOOR.

NOTES:

LAMP-COMPARTMENT
86280-01-000
SCREW
G11-08-12B (2)
CONNECTOR
58028-01-000 (2)

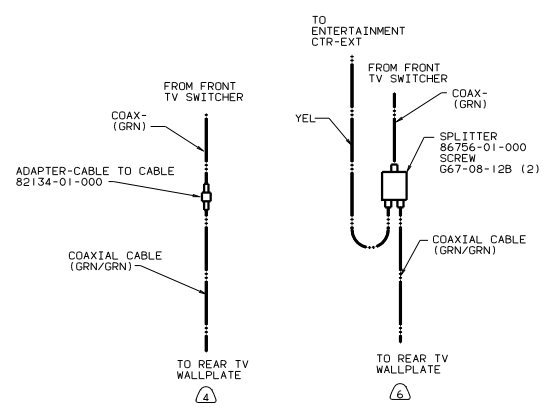
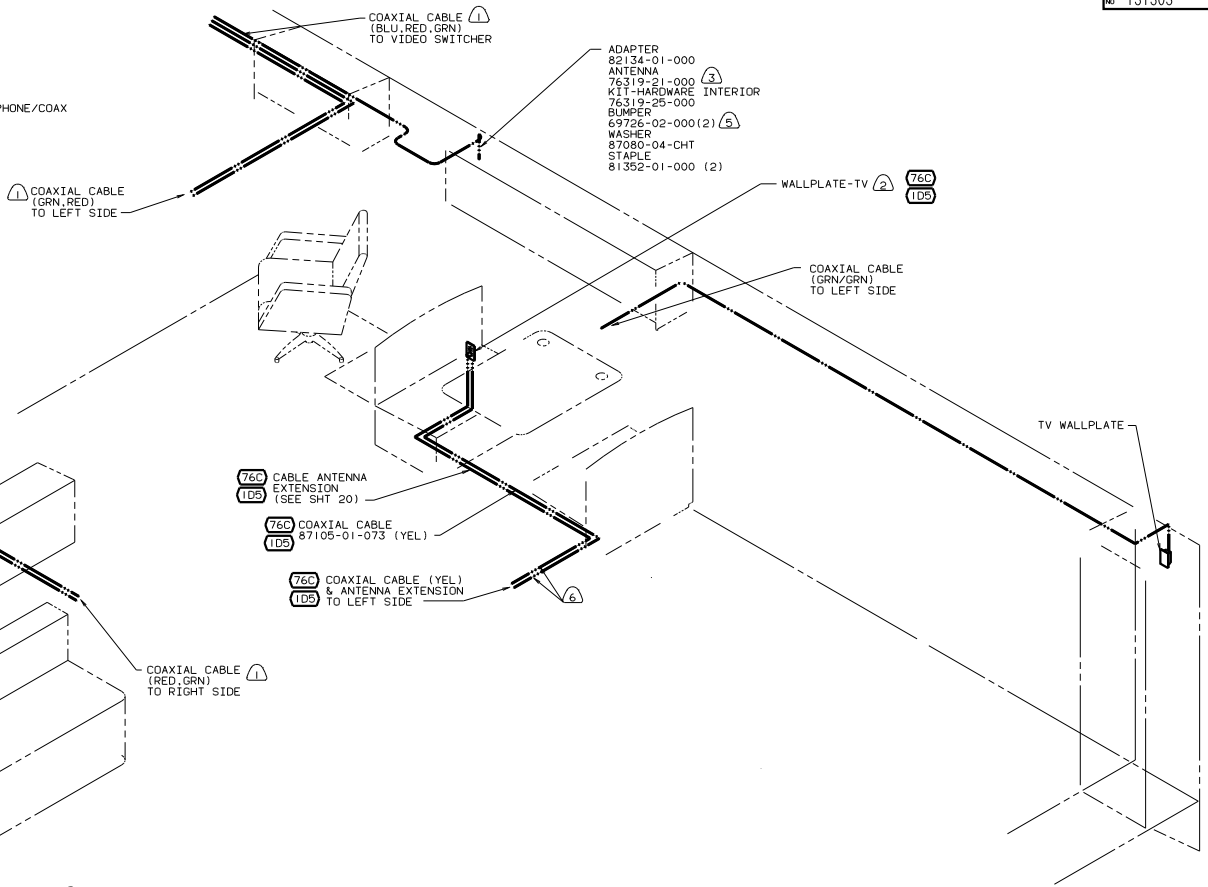
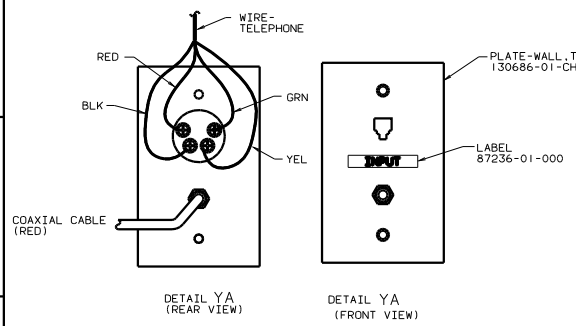
FOR ELECTRICAL TORQUE SPECIFICATIONS SEE DWG NO. 128783-01-000

FOR ELECTRICAL CALLOUTS SEE DWG NO. 121339-01-000

- (48M) LIGHTS-INCANDESCENT
- (265) CODES/STANDARDS-CSA/CMVSS
- (IB1) CODES STANDARDS/USA

99 G34H (IB1)(265)

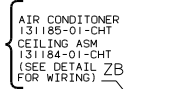
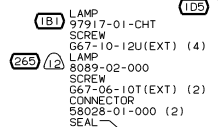
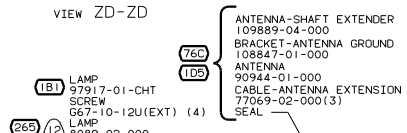
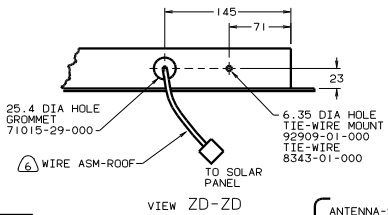
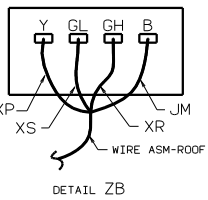
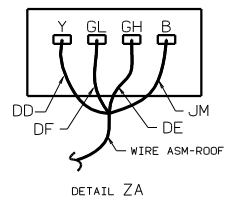
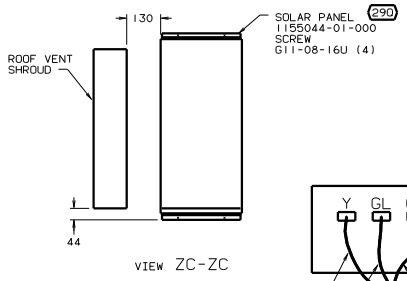
TITLE: WIRING INSTL-BODY(12 CL)
DWG NO 131303
SHEET 21 of 24



- (6) ROUTED BELOW MAIN FLOOR, BEFORE MAIN FLOOR IS INSTALLED.
- (5) ADD RUBBER BUMPER TO ANTENNA UNDER EACH END OF ANTENNA WHEN IN DOWN POSITION WHICH MAY COME IN CONTACT WITH ROOF.
- (4) WITHOUT (76C) OR (1D5)
- (3) SEE DRAWING 76319-01-000 FOR INSTALLATION OF TV ANTENNA.
- (2) SEE ENTERTAINMENT CENTER INSTL FOR MORE WIRING INFORMATION.
- (1) WIRE IN ROOF

FOR ELECTRICAL
TORQUE
SPECIFICATIONS
SEE DWG NO.
128783-01-000

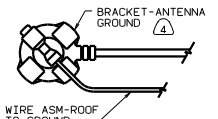
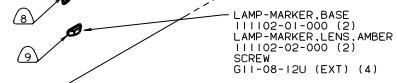
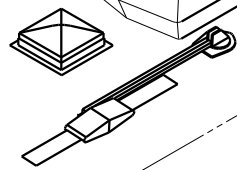
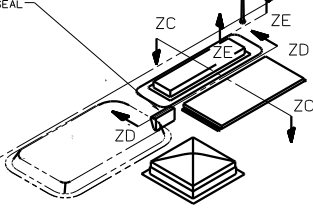
(78J)	ELECTRICAL SYSTEM - 50 AMP
(265)	CODES/STANDARDS-CSA/CMVSS
(1B1)	CODES STANDARDS/USA
(120)	ELECTRICAL SYSTEM 30 AMP
99 G34H (1B1) (265)	
TITLE: WIRING INSTL-BODY(COAX)	
NO. OF SHEETS DRAWING	TOTAL SHEETS
SHEET 22 OF 24	16
131303	



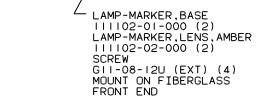
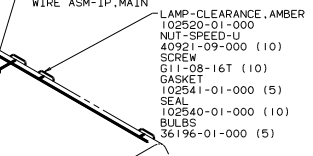
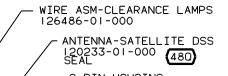
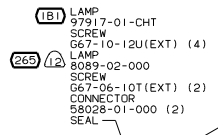
H
G
F
E
D
C
B
A

- 9 ITASCA UNITS.
- 8 WINNEBAGO UNITS.
- 7 INSTALL WITH WIRES TOWARD ROOF.
- 6 FASTEN TO VENT.
- 5 INSTALL RUBBER BOOT SUPPLIED WITH CONNECTOR-SOCKET ON WIRE ASM BEFORE WIRING SOCKET.
- 4 WRAP BRACKET LEGS AROUND ANTENNA BASE.
- 3 USE WAX-PASTE 900565-03-000 ON REAR SIDE OF LAMP.
- 2 TAPE BRANCH BACK ALONG WIRE ASM WITH TAPE 8363-01-000.
- 1 SEE SHT 24 FOR ADDITIONAL INFORMATION.

NOTES:



VIEW ZE-ZE



- 76C ENTERTAINMENT CTR/EXT CETTE
- 480 SATELLITE DISH
- 290 SOLAR PANEL - 10 WATT
- 292 A/C ROOF-HIGH EFFICIENCY
- 265 CODES/STANDARDS-CSA/CMVSS
- 105 ENTERTAINMENT CTR-EXT-W/CD
- 181 CODES STANDARDS/USA

FOR ELECTRICAL TORQUE SPECIFICATIONS SEE DWG NO. 128783-01-000

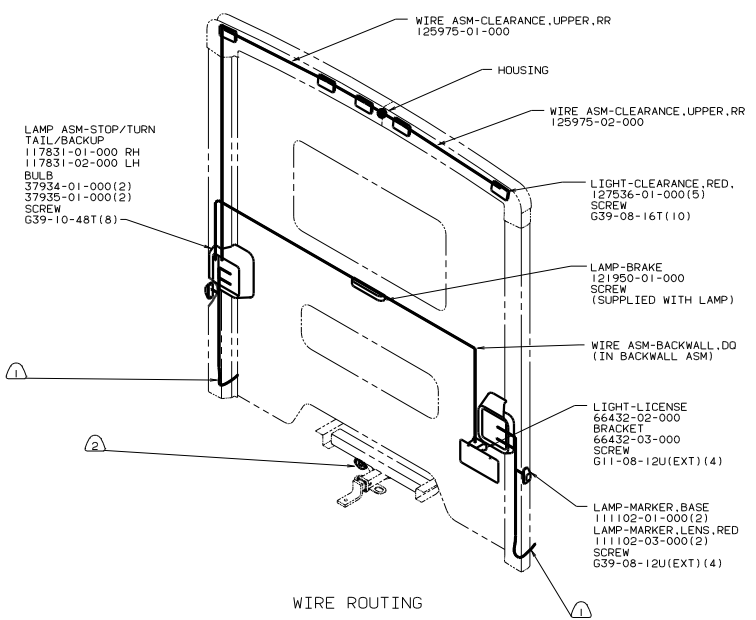
99G34H 181 265

TITLE: WIRING INSTL-BODY(EX L)

NO. OF SHEETS: 23 OF 24 SHEET 23 OF 24

DATE: 11/10/00

131303



WIRE ROUTING

- LAMP ASM-STOP/TURN TAIL/BACKUP
- 117831-01-000 RH
- 117831-02-000 LH
- BULB
- 37934-01-000(2)
- 37935-01-000(2)
- SCREW
- G39-10-48T(8)

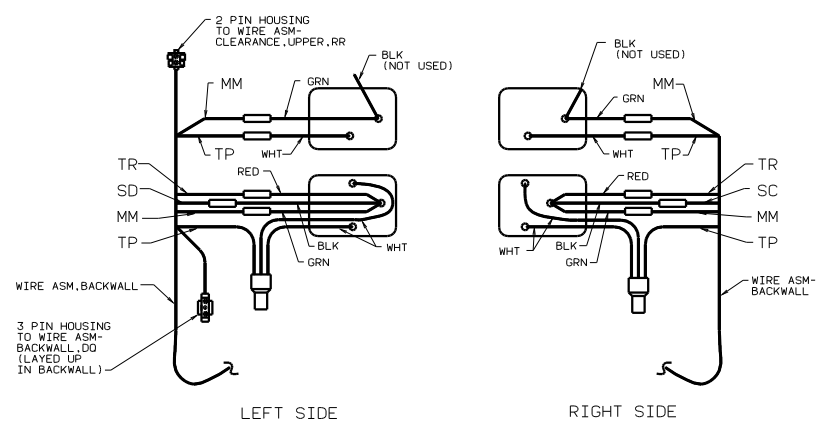
- WIRE ASM-CLEARANCE, UPPER, RR
- 125975-02-000
- HOUSING
- WIRE ASM-CLEARANCE, UPPER, RR
- 125975-01-000
- LIGHT-CLEARANCE, RED.
- (127536-01-000(5)
- SCREW
- G39-08-16T(10)

- LAMP-BRAKE
- 121950-01-000
- SCREW
- (SUPPLIED WITH LAMP)

- WIRE ASM-BACKWALL, DO
- (IN BACKWALL ASM)

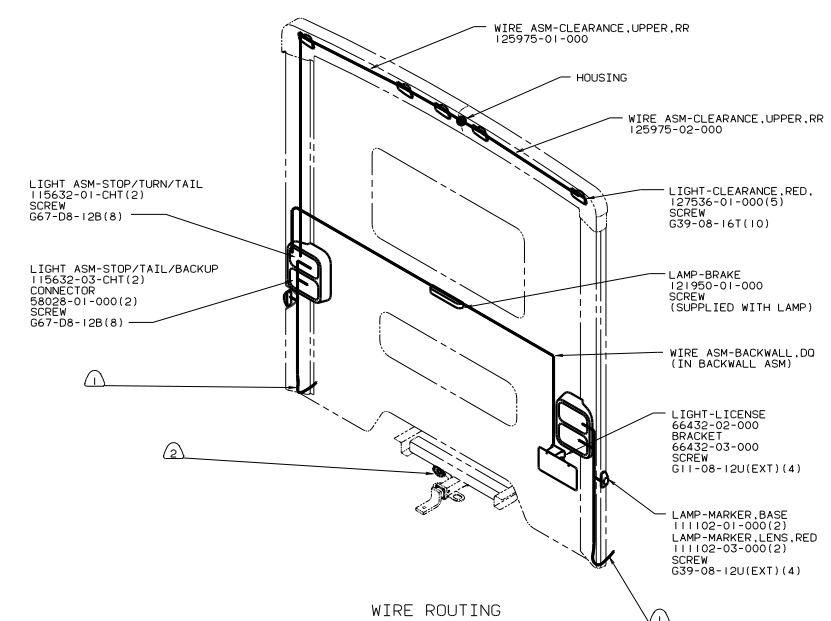
- LIGHT-LICENSE BRACKET
- 66432-02-000
- SCREW
- G11-08-12U(EXT) (4)

- LAMP-MARKER, BASE
- 111102-01-000(2)
- LAMP-MARKER, LENS, RED
- 111102-03-000(2)
- SCREW
- G39-08-12U(EXT) (4)



LEFT SIDE RIGHT SIDE

TAILLAMP WIRING



WIRE ROUTING

- LIGHT ASM-STOP/TURN/TAIL
- 115632-01-CHT(2)
- SCREW
- G67-D8-12B(8)

- LIGHT ASM-STOP/TAIL/BACKUP CONNECTOR
- 115632-03-CHT(2)
- SCREW
- 58028-01-000(2)
- SCREW
- G67-D8-12B(8)

- WIRE ASM-CLEARANCE, UPPER, RR
- 125975-02-000
- HOUSING
- WIRE ASM-CLEARANCE, UPPER, RR
- 125975-01-000
- LIGHT-CLEARANCE, RED.
- (127536-01-000(5)
- SCREW
- G39-08-16T(10)

- LAMP-BRAKE
- 121950-01-000
- SCREW
- (SUPPLIED WITH LAMP)

- WIRE ASM-BACKWALL, DO
- (IN BACKWALL ASM)

- LIGHT-LICENSE BRACKET
- 66432-02-000
- SCREW
- G11-08-12U(EXT) (4)

- LAMP-MARKER, BASE
- 111102-01-000(2)
- LAMP-MARKER, LENS, RED
- 111102-03-000(2)
- SCREW
- G39-08-12U(EXT) (4)

2 CONNECTOR-PLUG, TRAILER 113589-01-000 TO BE SUPPLIED LOOSE IN COACH WITH TRAILER TOW PACKAGE.

1 SEE WIRING INSTL-CHASSIS FOR ADDITIONAL INFORMATION.

NOTES:

WINNEBAGO

ITASCA

FOR ELECTRICAL TORQUE SPECIFICATIONS SEE DWG NO 128783-01-000

265 CODES/STANDARDS-CSA/CMVSS
 1B1 CODES STANDARDS/USA
 99 G34H 1B1 265

TITLE: WIRING INSTL-BODY(EX L)
 SHEET 24 OF 24