



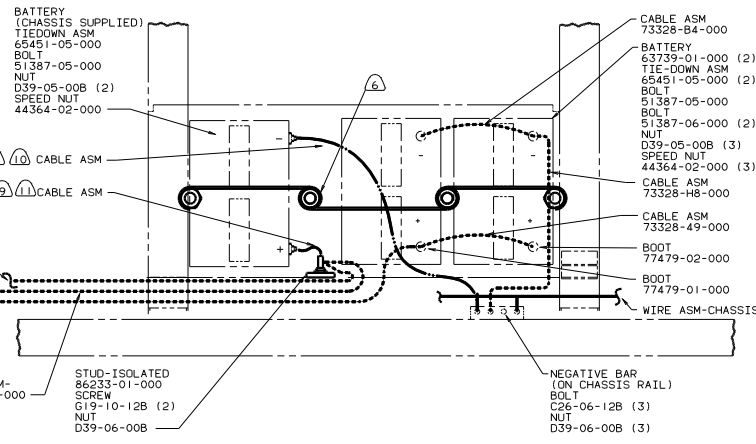
**DANGER**

**Danger of electrical shock, burns or death.** Always remove all power sources before attempting any repair, service or diagnostic work. Power can be present from shore power, generator, inverter or battery. All power sources must be disabled and secured before performing any service.

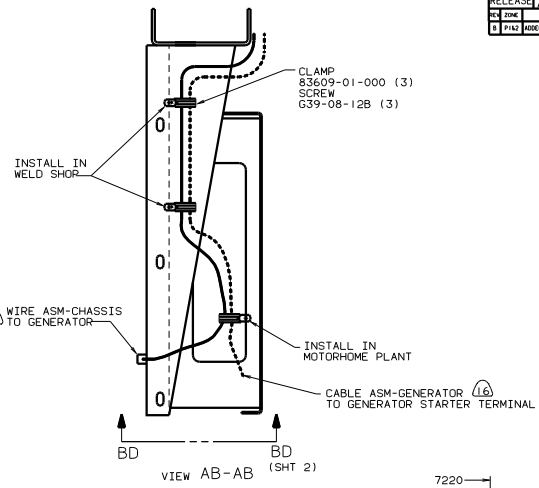


**CAUTION**

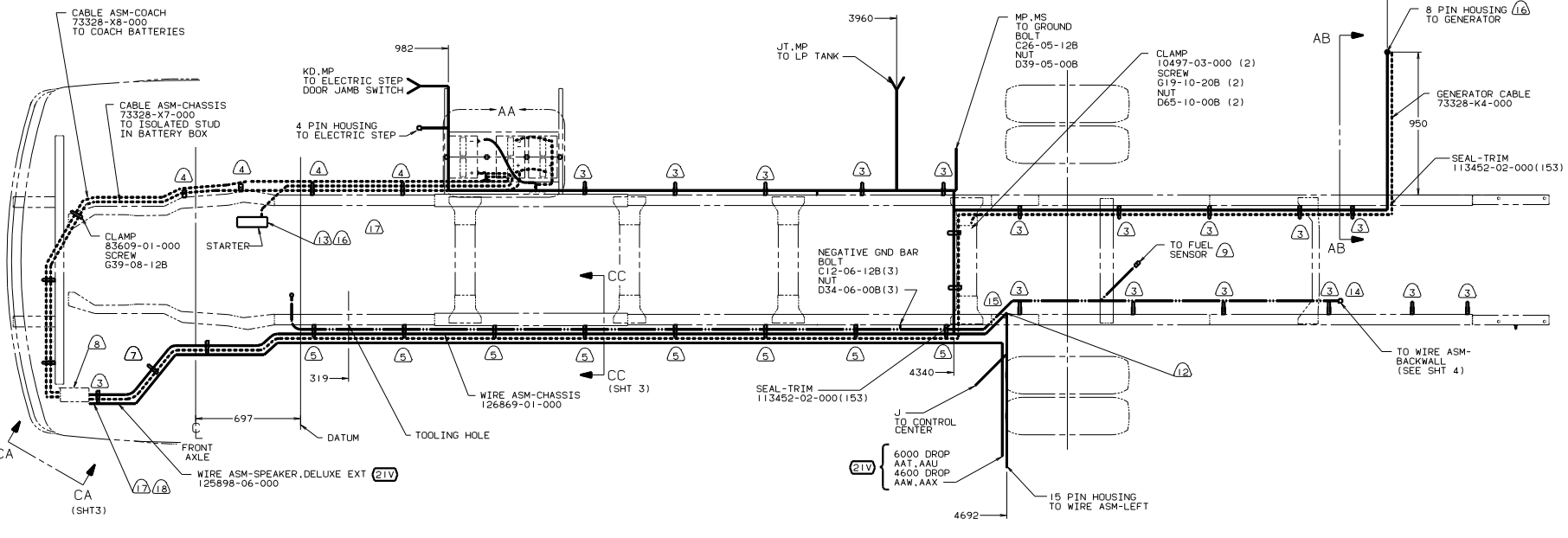
If you lack the skills, tools or equipment to perform diagnostic or repair work leave such work to an authorized Winnebago Industries dealer or other qualified shop.



DETAIL AA



VIEW AB-AB (SHT 2)



- (12) WIRES TO BE ROUTED THRU LOWER FLOOR.
  - (11) TRIM CABLE TO 400MM, ADD TERMINAL 8348-01-000.
  - (10) TRIM CABLE TO 800MM, ADD TERMINAL 8348-01-000.
  - (9) SUPPLIED WITH CHASSIS.
  - (8) SEE WIRING INSTL-FRONT END FOR ADDITIONAL INFORMATION.
  - (7) COVER WITH CONDUIT-41953-10-000 & 41953-11-000 AS REQUIRED.
  - (6) USE TWO NUTS HERE TO ACCOUNT FOR BATTERY HEIGHT DIFFERENCE.
  - (5) CLAMP 10497-03-000 AND SCREW G39-08-12B.
  - (4) CLAMP 83609-01-000 AND SCREW G39-08-12B.
  - (3) CLAMP 83610-01-000, SCREW G39-08-12B.
2. SECURE CONDUIT 41953-01-000, 41953-02-000 AND 41953-03-000 OVER ALL WIRES IN CONTACT WITH SHARP EDGES.
1. LEGEND: — WINNEBAGO, ..... CABLE, — CHASSIS SUPPLIED.

- (17) 4 PIN HOUSING TO WIRE ASM-AMPLIFIER THRU FLOOR, LEFT FRONT.
- (16) SECURE SO WIRES DO NOT CONTACT EXHAUST.
- (15) ROUTE WIRES & CABLE OVER SPRING HANGER & ON TOP OF CHASSIS RAIL AT THIS POINT.
- (14) ROUTE WIRES & CABLE INSIDE CHASSIS RAIL AT THIS POINT & TO THE REAR.
- (13) BATTERY CABLE MUST BE INSTALLED TO STARTER MOTOR BEFORE ENGINE WIRING HARNESS AND ROUTED IN SUCH A MANNER AS TO PREVENT ANY POSSIBLE DEGRADATION FROM THE EXHAUST SYSTEM.

- (265) CODES/STANDARDS-CSA/CMVSS
- (22W) BATTERY-TWO
- (21V) SOUND SYSTEM-DELUXE
- (1CM) CHEVY CHASSIS-16,500# GVWR
- (1B1) CODES STANDARDS/USA

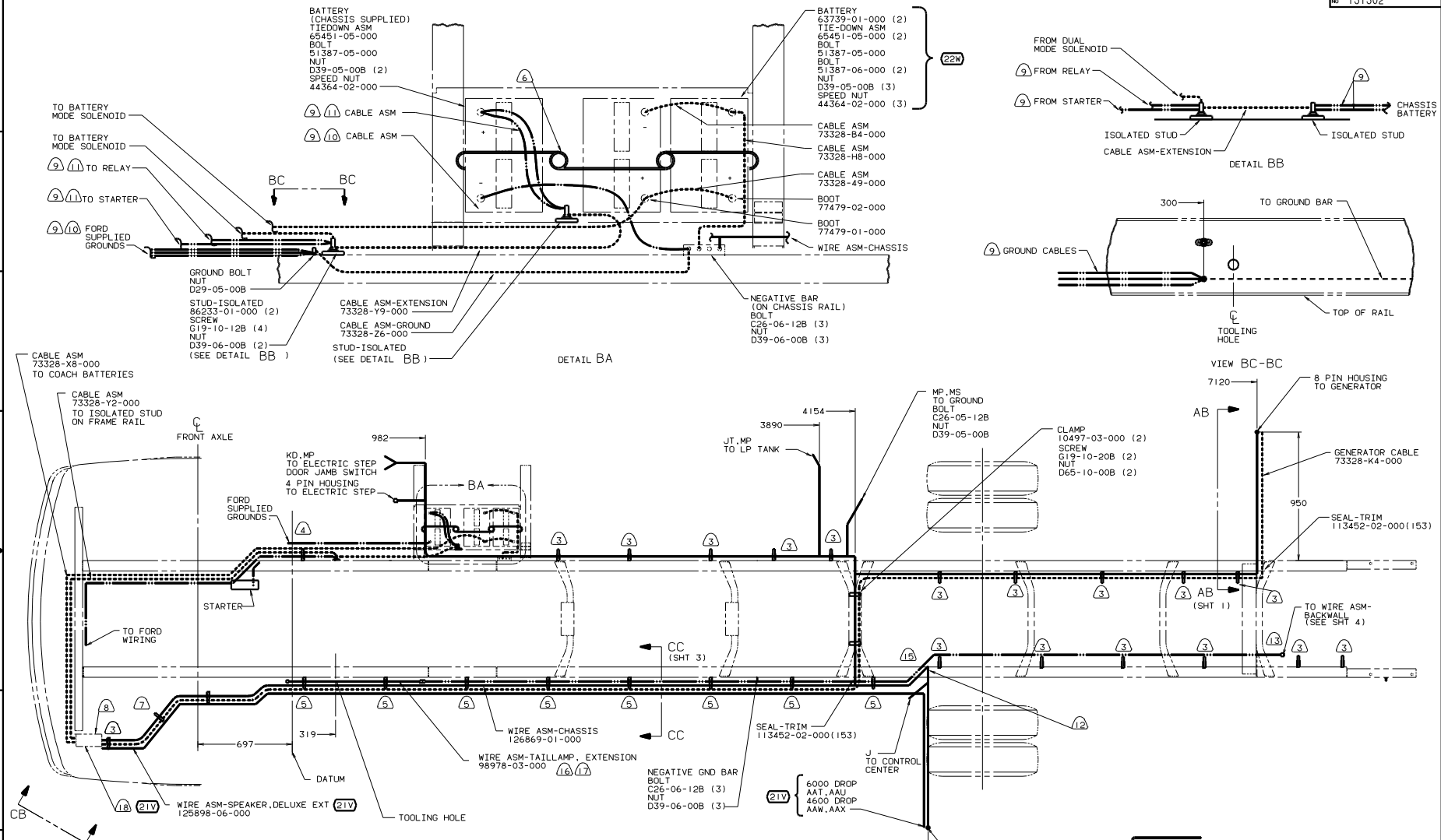
WINNEBAGO 99 G34H

OF IN	DATE	UNSPECIFIED TOLERANCES ARE:	MATERIAL
OMP	DATE	WHOLE DIM (1)	F 1:1
PIE	DATE	ONE-PLACE (1, 2)	
PIE	DATE	TWO-PLACE (1, 2)	
PIE	DATE	ANGLE	
COMP	DATE	THIRD ANGLE PROJECTION	

FOR ELECTRICAL TORQUE SPECIFICATIONS SEE DWG NO. 128783-01-000

WIRING INSTL-CHASSIS

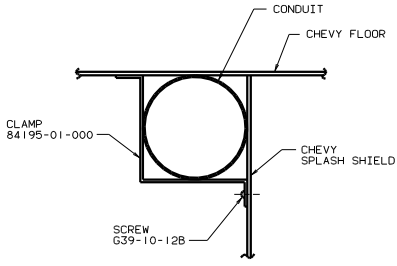
REF: 126830-K 1 131302



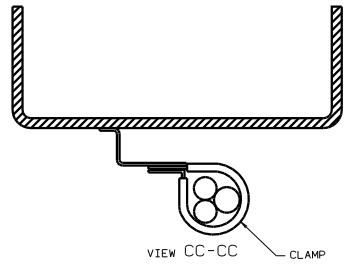
- 1. LEGEND: — WINNEBAGO, - - - - - CABLE, ——— CHASSIS SUPPLIED.
- 2. SECURE CONDUIT 41953-01-000, 41953-02-000 AND 41953-03-000 OVER ALL WIRES IN CONTACT WITH SHARP EDGES.
- 3. CLAMP 83610-01-000, SCREW G39-08-12B.
- 4. CLAMP 83609-01-000 AND SCREW G39-08-12B.
- 5. CLAMP 10497-03-000 AND SCREW G39-08-12B.
- 6. USE TWO NUTS HERE TO ACCOUNT FOR HEIGHT DIFFERENCE.
- 7. SEE WIRING INSTL-FRONT END FOR ADDITIONAL INFORMATION.
- 8. COVER WITH CONDUIT-41953-10-000 & 41953-11-000 AS REQUIRED.
- 9. SUPPLIED WITH CHASSIS.
- 10. TRIM CABLE TO 500 ADD TERMINAL 8348-01-000 (2) INCLUDE ALL GROUND WIRES.
- 11. CUT 14GA WIRE, 6 & 4GA CABLES 500 FROM BATTERY TERMINAL, ADD TERMINAL 8331-01-000(2) TO 4GA CABLES AND TERMINAL 8350-01-000(2) TO 14GA WIRES & 6GA CABLES. CONNECT TERMINALS TO ISOLATED STUDS AS SHOWN IN DETAIL P.
- 12. WIRES TO BE ROUTED THRU LOWER FLOOR.
- 13. ROUTE WIRES & CABLES OVER SPRING HANGER AND ON TOP OF CHASSIS RAIL AT THIS POINT.
- 14. TIE EXCESS CABLE AND WIRE INSIDE CHASSIS RAIL WITH WIRE TIE 116673-01-000 OR 8343-02-000 AS REQUIRED.
- 15. ROUTE WIRES & CABLE INSIDE CHASSIS RAIL AT THIS POINT & TO THE REAR.
- 16. USE WIRE ASM-EXTENSION WITH 208" TO 228" STRETCHED PRE 1999 CHASSIS ONLY.
- 17. DISCONNECT EXISTING CHASSIS WIRE ASM NEAR TRANSMISSION AND INSERT EXTENSION ASSEMBLY.
- 18. 4 PIN HOUSING TO WIRE ASM-AMPLIFIER THRU FLOOR LEFT FRONT.
- 19. ROUTE WIRES & CABLES OVER SPRING HANGER AND ON TOP OF CHASSIS RAIL AT THIS POINT.
- 20. TRIM CABLE TO 500 ADD TERMINAL 8348-01-000 (2) INCLUDE ALL GROUND WIRES.
- 21. SOUND SYSTEM-DELUXE
- 22. BATTERY-TWO
- 23. WIRES TO BE ROUTED THRU LOWER FLOOR.
- 24. TIE EXCESS CABLE AND WIRE INSIDE CHASSIS RAIL WITH WIRE TIE 116673-01-000 OR 8343-02-000 AS REQUIRED.
- 25. CODES/STANDARDS-CSA/CMVSS
- 26. CODES STANDARDS/USA
- 27. FORD CHASSIS-20,500# GVWR

FOR ELECTRICAL TORQUE SPECIFICATIONS SEE DWG NO. 128783-01-000

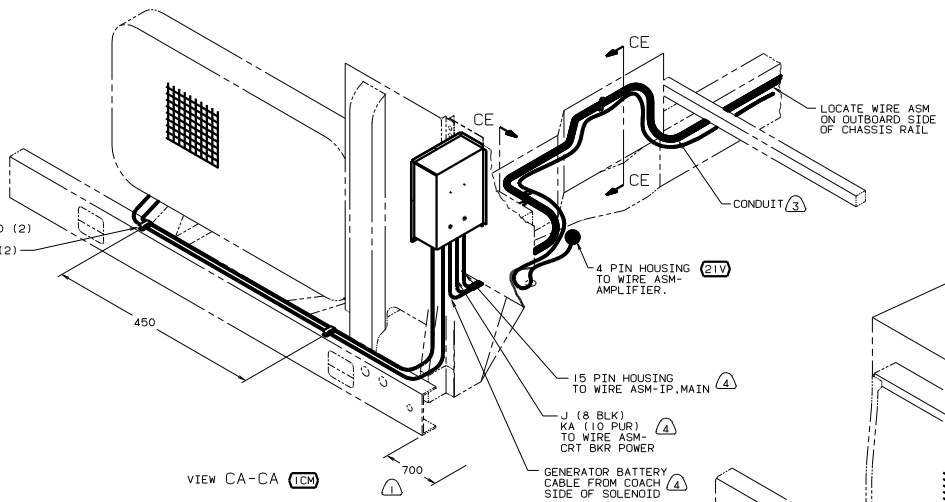
265	CODES/STANDARDS-CSA/CMVSS
22W	BATTERY-TWO
21V	SOUND SYSTEM-DELUXE
1B1	CODES STANDARDS/USA
16M	FORD CHASSIS-20,500# GVWR
99	G34H 1B1 265 16M
TITLE: WIRING INSTL-CHASSIS	
DRAWN BY: [Signature]	
CHECKED BY: [Signature]	
DATE: [Date]	
SHEET 2 OF 4	
131302	



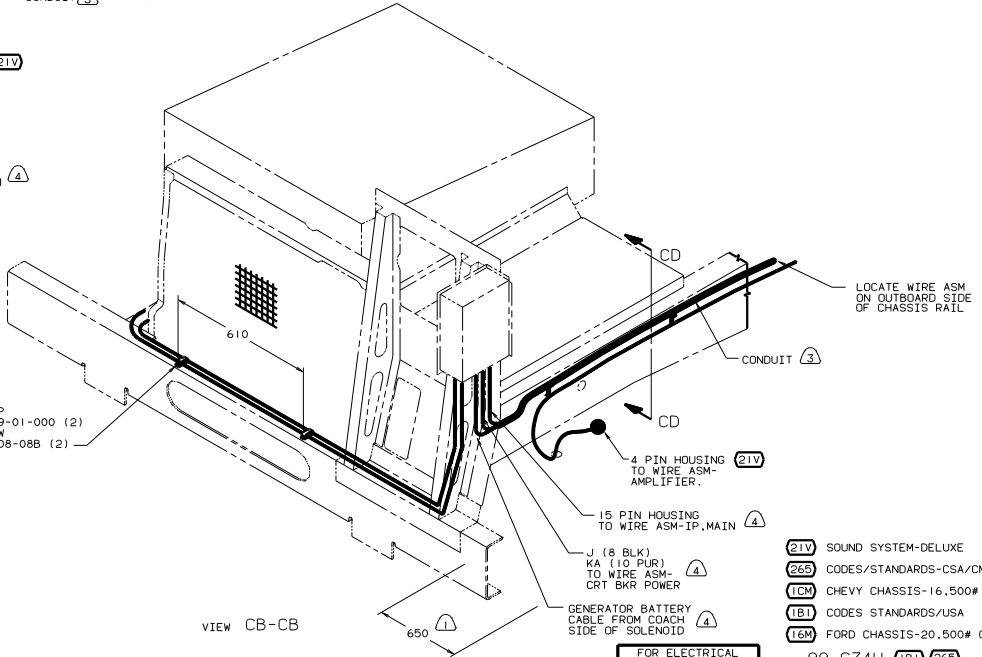
VIEW CE-CE  
(2 PLCS)



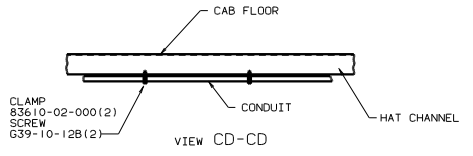
VIEW CC-CC



VIEW CA-CA (1CM)



VIEW CB-CB



VIEW CD-CD

- (4) FOR ADDITIONAL INFORMATION SEE WIRING INSTLATION FRONT END.
- (3) COVER WITH CONDUIT 41953-10-000 AND 41953-11-000 AS REQUIRED.
- (2) CONNECT CABLES TO COACH SIDE OF BATTERY DISCONNECT WHEN BATTERY DISCONNECT IS USED.
- (1) LAY BATTERY AND GENERATOR CABLES TO THIS DIMENSION FROM END OF CROSSMEMBER TO START INSTALLATION.

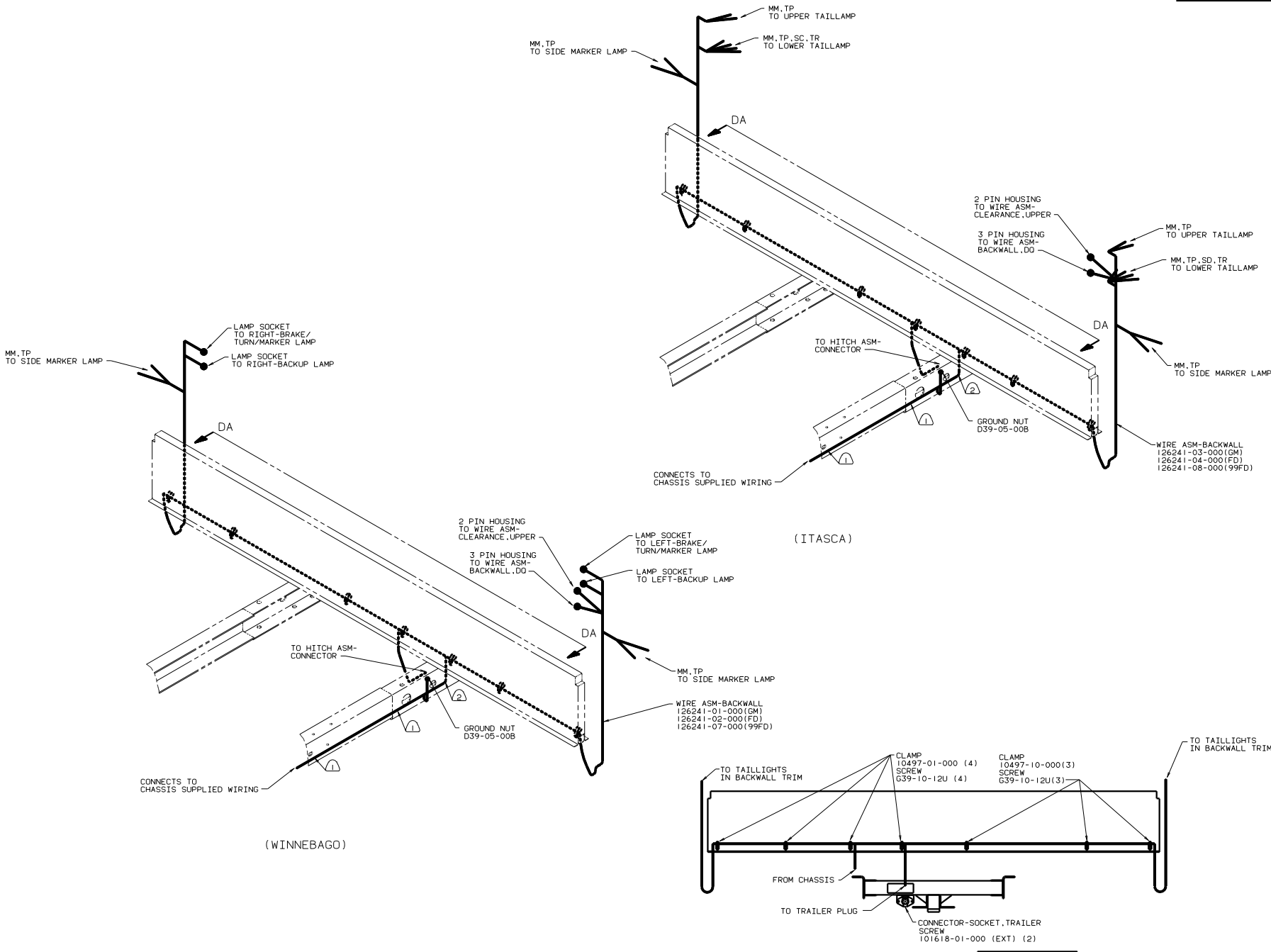
NOTES:

- (21V) SOUND SYSTEM-DELUXE
- (265) CODES/STANDARDS-CSA/CMVSS
- (1CM) CHEVY CHASSIS-16,500# GVWR
- (1B1) CODES STANDARDS/USA
- (1CM) FORD CHASSIS-20,500# GVWR

FOR ELECTRICAL TORQUE SPECIFICATIONS SEE DWG NO 128783-01-000

99 G34H (1B1) (265)

TITLE:	WIRING INSTL-CHASSIS
SHEET	3 OF 4
REV	1 E
NO	131302



- ② WIRE TO BE ROUTED ON BACK SIDE OF RISER.
- ① WIRE TIE 8343-02. FASTEN TO FRAME AT LEAST ONCE EVERY 600MM.

FOR ELECTRICAL TORQUE SPECIFICATIONS SEE DWG NO. 128783-01-000

99 G34H (1B1) (265)	
TITLE	WIRING INSTL-CHASSIS
NO. OF SHEETS	4 OF 4
SHEET NO.	4
DWG NO.	131302