



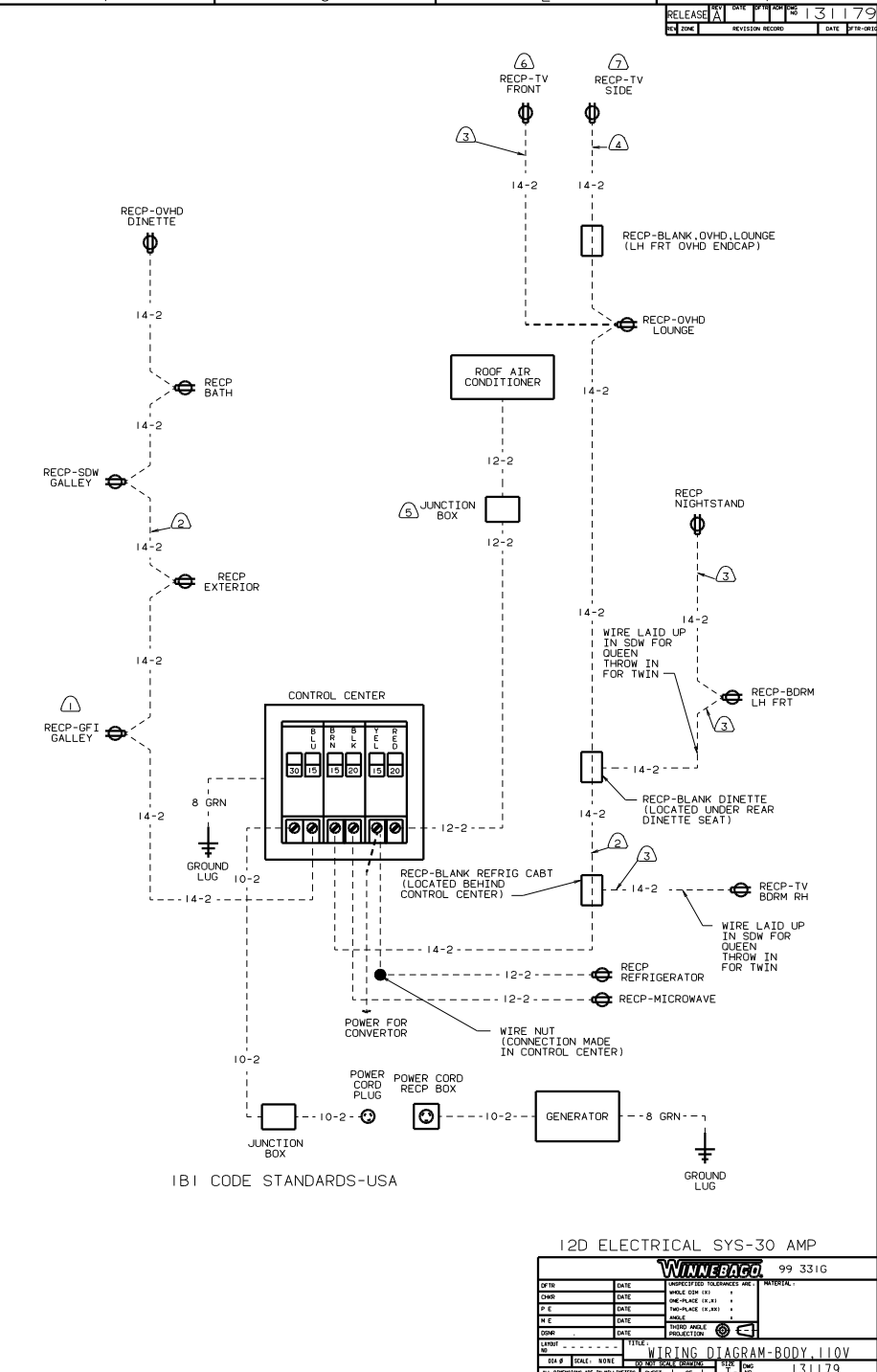
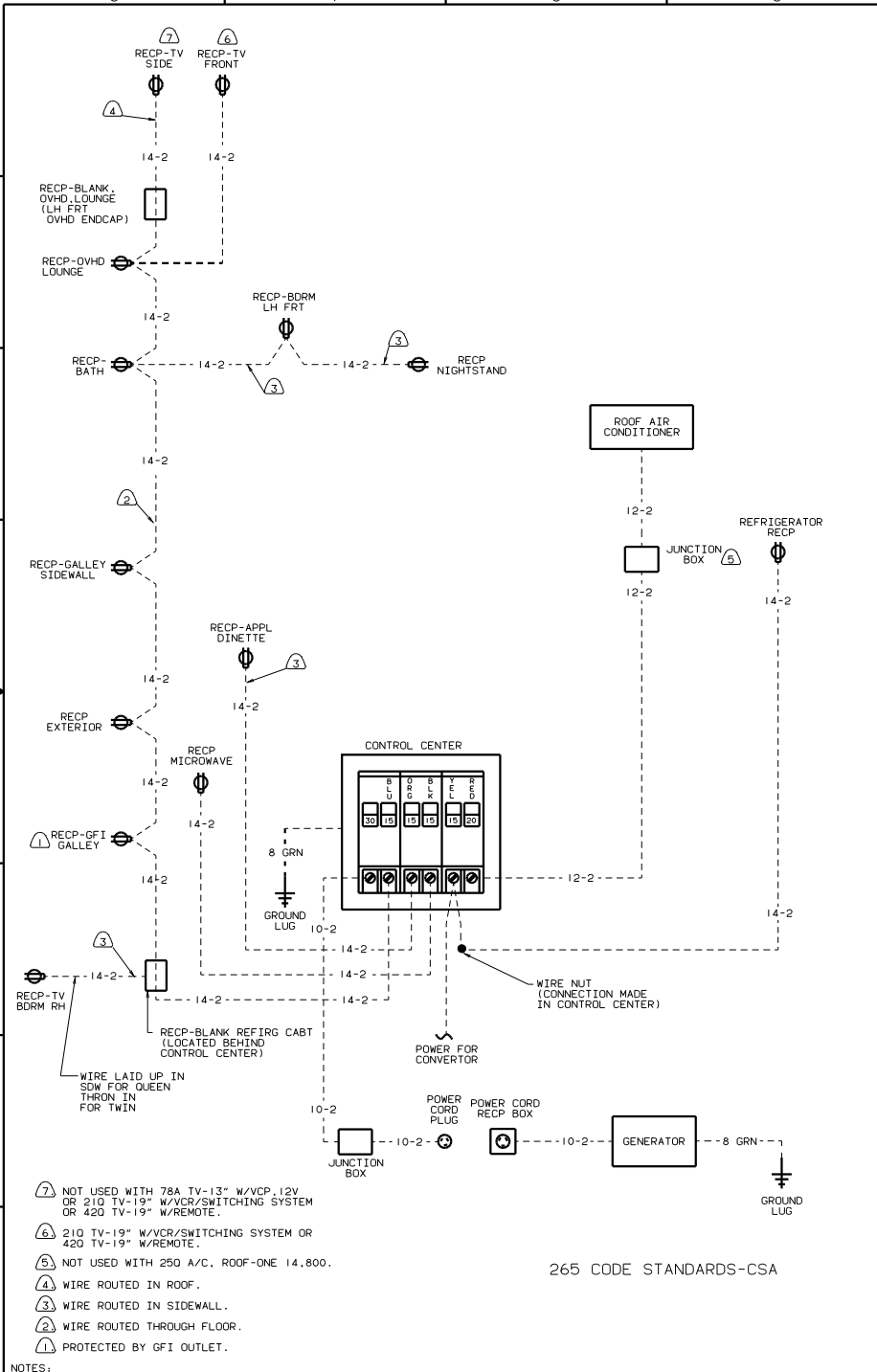
DANGER

Danger of electrical shock, burns or death. Always remove all power sources before attempting any repair, service or diagnostic work. Power can be present from shore power, generator, inverter or battery. All power sources must be disabled and secured before performing any service.



CAUTION

If you lack the skills, tools or equipment to perform diagnostic or repair work leave such work to an authorized Winnebago Industries dealer or other qualified shop.



- ⑦ NOT USED WITH 78A TV-13" W/VCP, 12V OR 210 TV-19" W/VCR/SWITCHING SYSTEM OR 420 TV-19" W/REMOTE.
- ⑧ 210 TV-19" W/VCR/SWITCHING SYSTEM OR 420 TV-19" W/REMOTE.
- ⑨ NOT USED WITH 250 A/C. ROOF-ONE 14,800.
- ④ WIRE ROUTED IN ROOF.
- ③ WIRE ROUTED IN SIDEWALL.
- ② WIRE ROUTED THROUGH FLOOR.
- ① PROTECTED BY GFI OUTLET.

265 CODE STANDARDS-CSA

IBI CODE STANDARDS-USA

12D ELECTRICAL SYS-30 AMP

WINNEBAGO		99 331G
OF IN	DATE	UNDESIGNED REVISIONS ARE MATERIAL
CHP	DATE	WHOLE OR IN PART
DR	DATE	ONE-PLACE (R, A, I)
PL	DATE	TWO-PLACE (R, A, I)
W/E	DATE	W/REVISION
CON	DATE	INDICATE W/REVISION
LAUNCH	DATE	TITLE
REV #	SCALE	NOTE
ALL DIMENSIONS ARE IN MILLIMETERS	SHEET	1 OF 1
WIRING DIAGRAM-BODY, 110V		131179