



**DANGER**

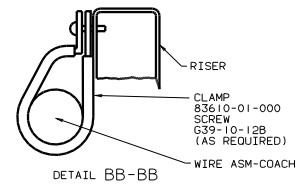
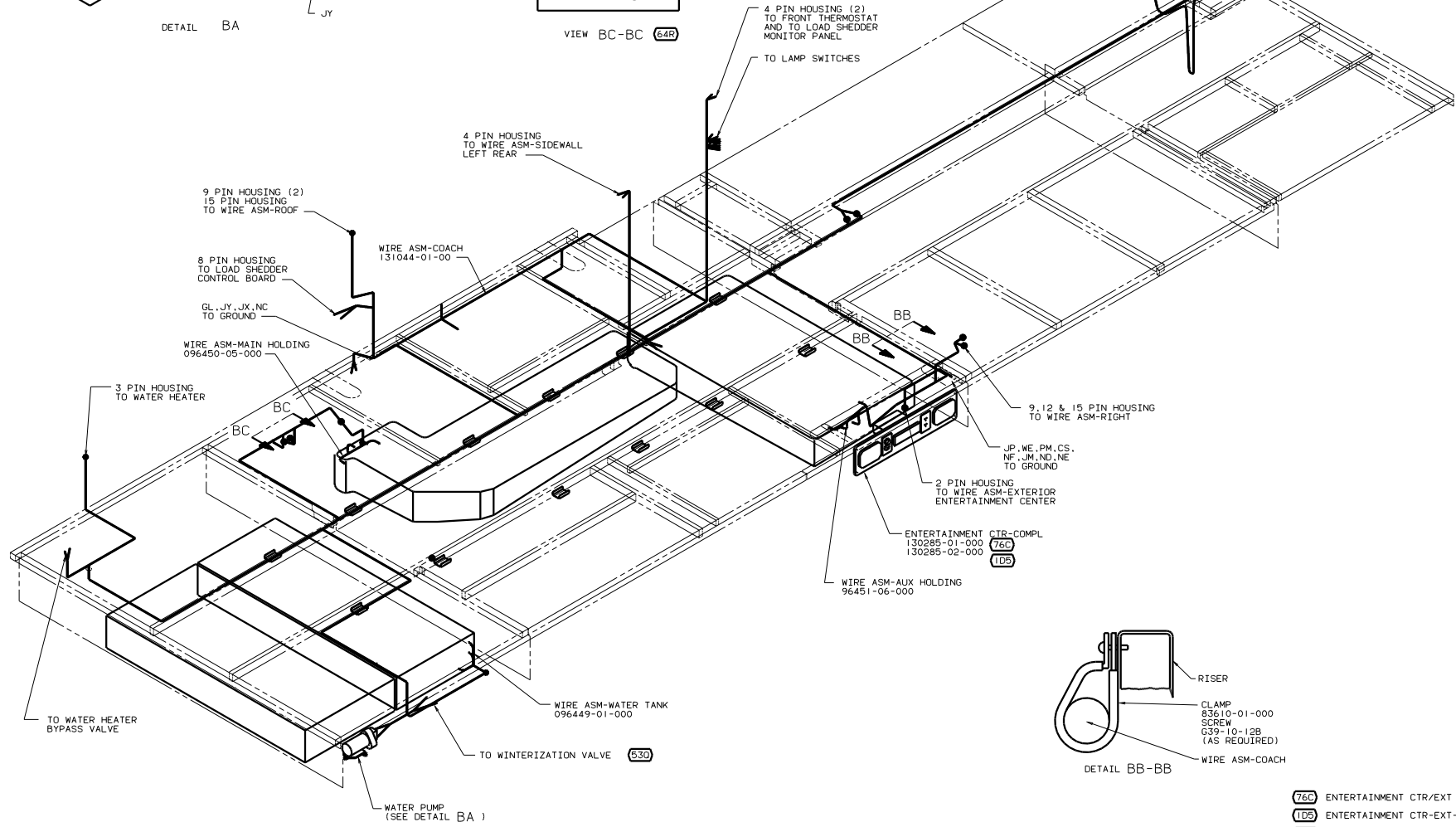
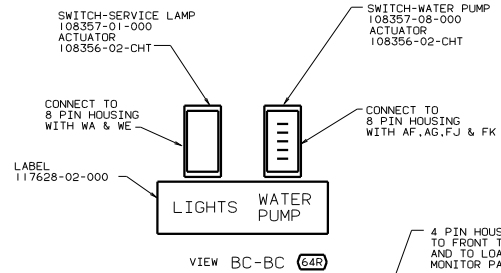
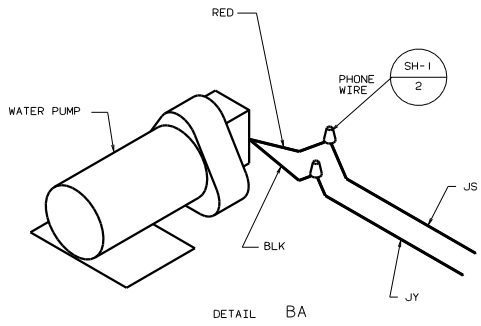
**Danger of electrical shock, burns or death.** Always remove all power sources before attempting any repair, service or diagnostic work. Power can be present from shore power, generator, inverter or battery. All power sources must be disabled and secured before performing any service.



**CAUTION**

If you lack the skills, tools or equipment to perform diagnostic or repair work leave such work to an authorized Winnebago Industries dealer or other qualified shop.



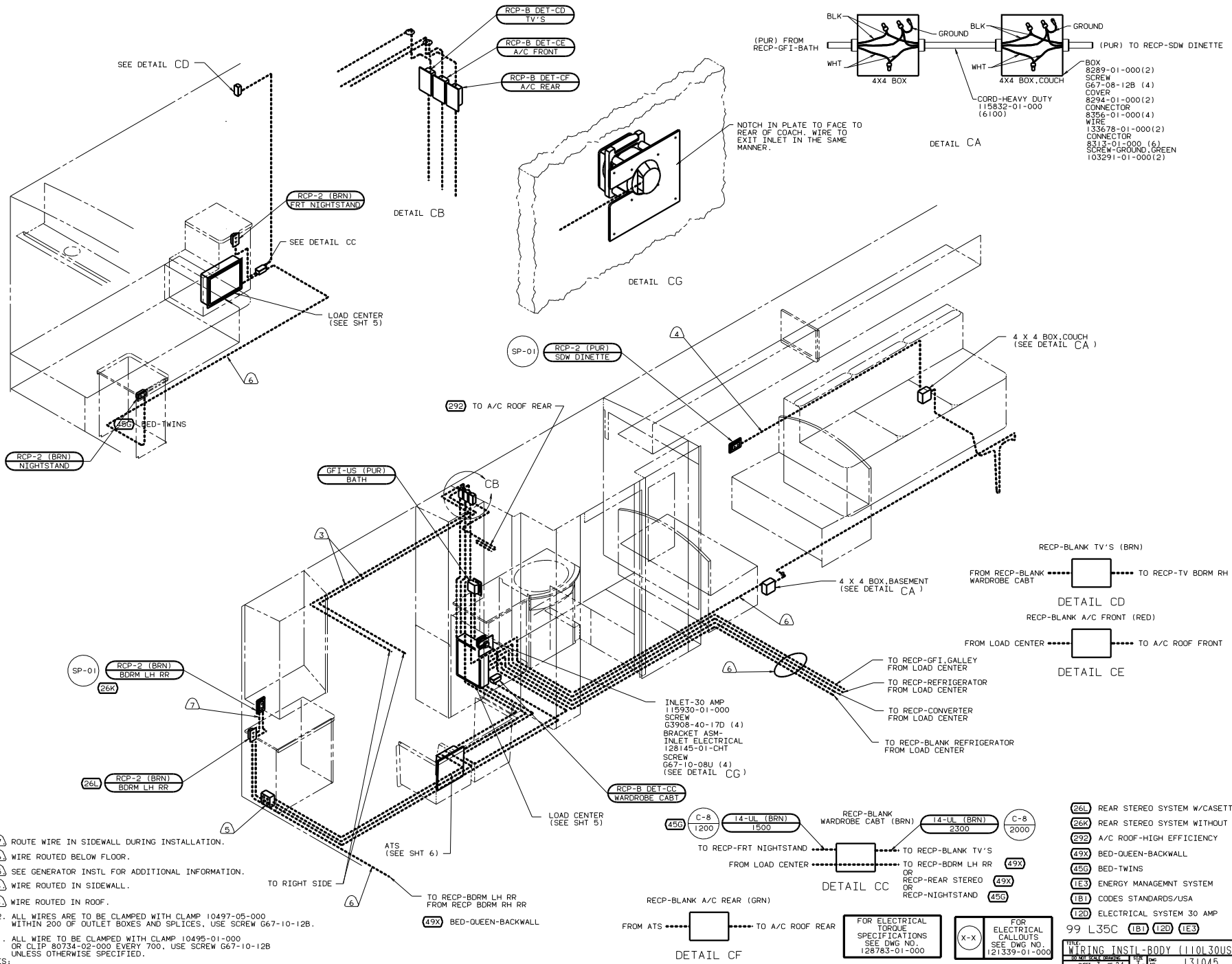


- NOTES:
1. ALL WIRES TO BE CLAMPED WITH CLAMP 10495-01-000 OR CLIP 80734-02-000 EVERY 700. USE SCREW G67-10-12B UNLESS OTHERWISE SPECIFIED.
  2. CLAMP TO FLOOR SUPPORT TUBES AS NECESSARY WITH CLAMP 10497-01-000.
  3. WIRES THAT REST ON WIRE TRAYS ARE TO BE TIES DOWN WITH WIRE TIE 8343-02-000.

- (76C) ENTERTAINMENT CTR/EXT CSETTE
- (1D5) ENTERTAINMENT CTR-EXT-W/CD
- (64R) EXTERIOR WASH STATION
- (530) WINTERIZING KIT
- (265) CODES/STANDARDS-CSA/CMVSS
- (1B1) CODES STANDARDS/USA

FOR ELECTRICAL CALLOUTS SEE DWG NO. 121339-01-000

WIRING INSTL - BODY (BL 12V)  
 SHEET 2 OF 24  
 131045



SEE DETAIL CD

RCP-2 (BRN)  
FRT NIGHTSTAND

SEE DETAIL CC

LOAD CENTER  
(SEE SHT 5)

BED-TWINS

RCP-2 (BRN)  
NIGHTSTAND

GFI-US (PUR)  
BATH

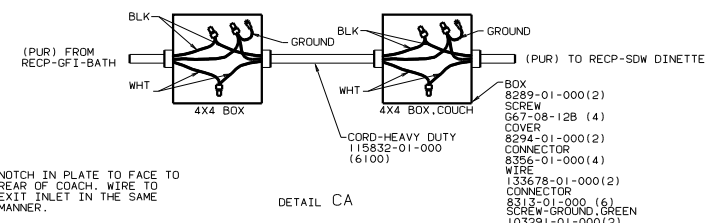
SP-01 RCP-2 (BRN)  
BDRM LH RR  
26K

26L RCP-2 (BRN)  
BDRM LH RR

DETAIL CB

DETAIL CG

SP-01 RCP-2 (PUR)  
SDW DINETTE



DETAIL CA

4 X 4 BOX, COUCH  
(SEE DETAIL CA)

4 X 4 BOX, BASEMENT  
(SEE DETAIL CA)

INLET-30 AMP  
115930-01-000  
SCREW  
G3908-40-17D (4)  
BRACKET ASM  
INLET ELECTRICAL  
128145-01-CHT  
SCREW  
G67-10-08U (4)  
(SEE DETAIL CG)

LOAD CENTER  
(SEE SHT 5)

ATS  
(SEE SHT 6)

LOAD CENTER  
(SEE SHT 5)

49X BED-QUEEN-BACKWALL

RECP-BLANK A/C REAR (GRN)  
FROM ATS

DETAIL CF

RECP-BLANK TV'S (BRN)

FROM RECP-BLANK WARDROBE CABT TO RECP-TV BDRM RH

DETAIL CD

RECP-BLANK A/C FRONT (RED)

FROM LOAD CENTER TO A/C ROOF FRONT

DETAIL CE

TO RECP-GFI, GALLEY FROM LOAD CENTER  
TO RECP-REFRIGERATOR FROM LOAD CENTER  
TO RECP-CONVERTER FROM LOAD CENTER  
TO RECP-BLANK REFRIGERATOR FROM LOAD CENTER

DETAIL CC

TO RECP-FRT NIGHTSTAND  
FROM LOAD CENTER

TO RECP-BLANK TV'S  
TO RECP-BDRM LH RR  
OR  
RECP-REAR STEREO  
OR  
RECP-NIGHTSTAND

FOR ELECTRICAL TORQUE SPECIFICATIONS SEE DWG NO. 128783-01-000

FOR ELECTRICAL CALLOUTS SEE DWG NO. 121339-01-000

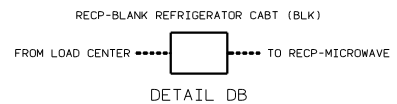
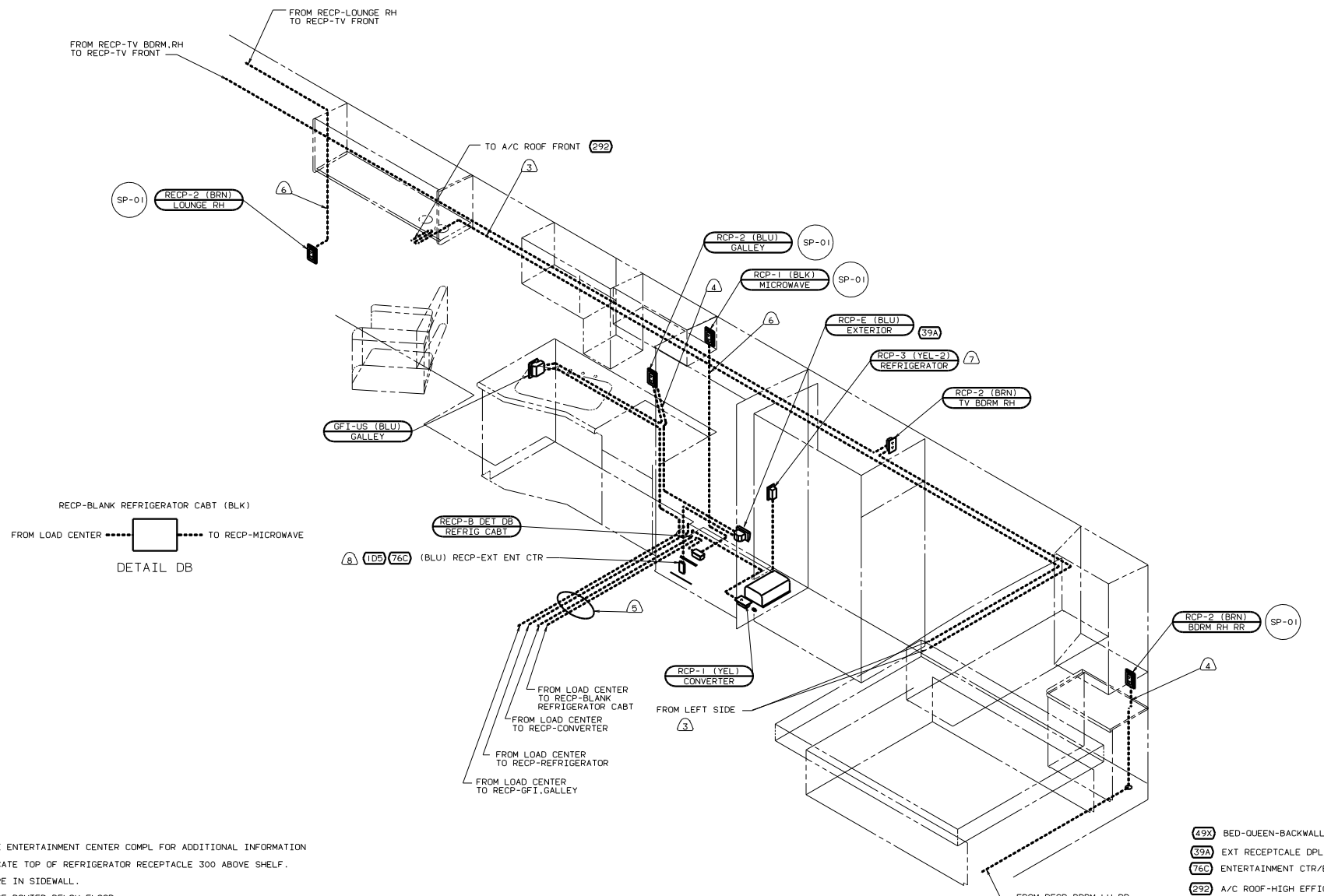
- 26L REAR STEREO SYSTEM W/CASSETTE
- 26K REAR STEREO SYSTEM WITHOUT
- 292 A/C ROOF-HIGH EFFICIENCY
- 49X BED-QUEEN-BACKWALL
- 45G BED-TWINS
- 1E3 ENERGY MANGEMNT SYSTEM
- 1B1 CODES STANDARDS/USA
- 12D ELECTRICAL SYSTEM 30 AMP

99 L35C (1B1) (12D) (1E3)

WIRING INSTL-BODY (110130US)  
sheet 3 of 24  
131045

- ① ROUTE WIRE IN SIDEWALL DURING INSTALLATION.
- ② WIRE ROUTED BELOW FLOOR.
- ③ SEE GENERATOR INSTL FOR ADDITIONAL INFORMATION.
- ④ WIRE ROUTED IN SIDEWALL.
- ⑤ WIRE ROUTED IN ROOF.

- 2. ALL WIRES ARE TO BE CLAMPED WITH CLAMP 10495-05-000 WITHIN 200 OF OUTLET BOXES AND SPLICES. USE SCREW G67-10-12B.
- 1. ALL WIRE TO BE CLAMPED WITH CLAMP 10495-01-000 OR CLIP 80734-02-000 EVERY 700. USE SCREW G67-10-12B UNLESS OTHERWISE SPECIFIED.



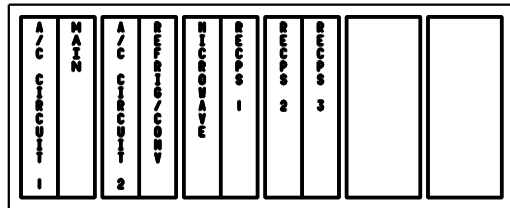
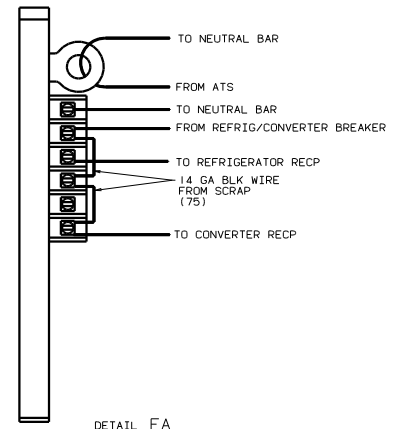
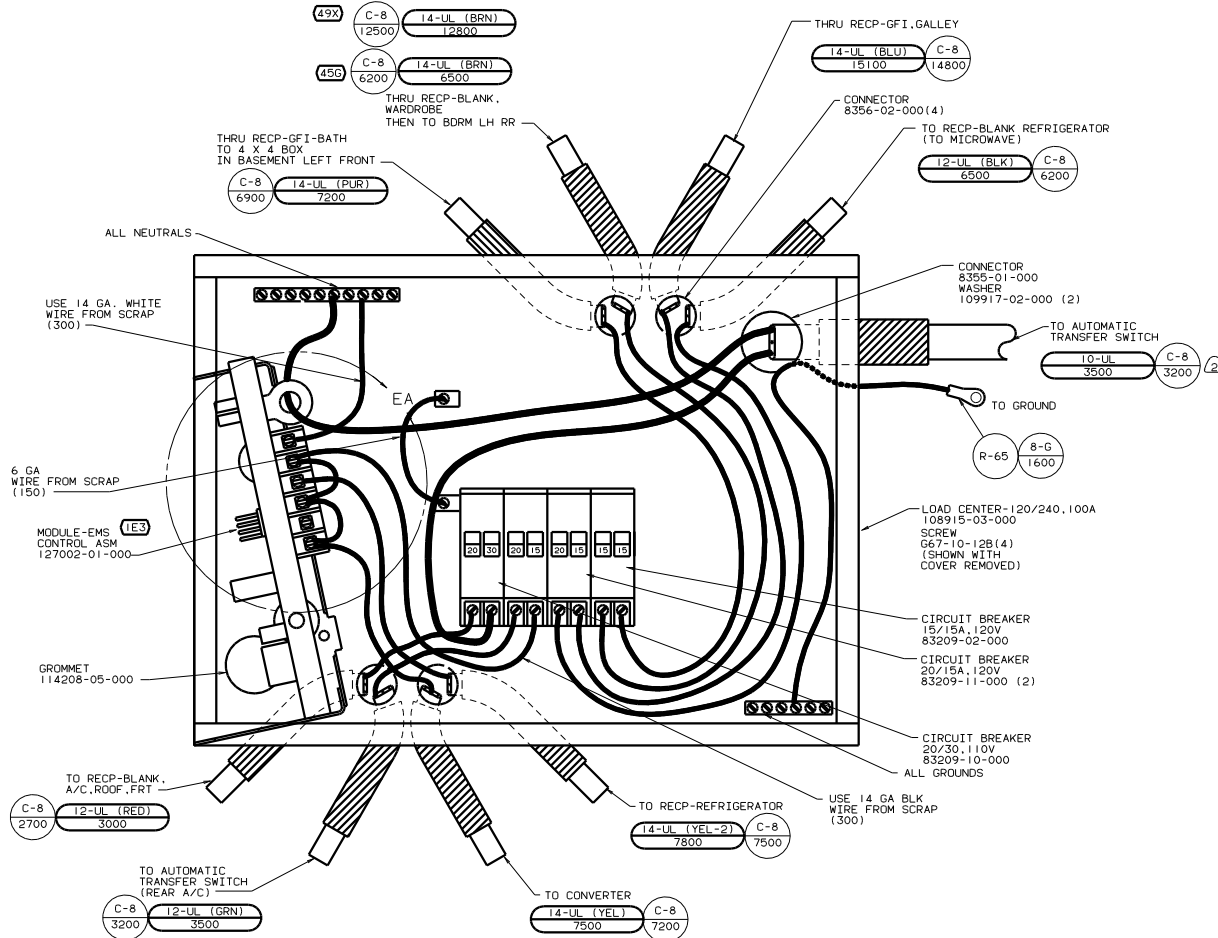
- Ⓐ SEE ENTERTAINMENT CENTER COMPL FOR ADDITIONAL INFORMATION
  - Ⓑ LOCATE TOP OF REFRIGERATOR RECEPTACLE 300 ABOVE SHELF.
  - Ⓒ WIRE IN SIDEWALL.
  - Ⓓ WIRE ROUTED BELOW FLOOR.
  - Ⓔ WIRE ROUTED THRU SIDEWALL.
  - Ⓕ WIRE IN ROOF.
2. ALL WIRES ARE TO BE CLAMPED WITH CLAMP 10497-05-000 WITHIN 200 OF OUTLET BOXES AND SPLICES. USE SCREW 667-10-12B.
1. ALL WIRE TO BE CLAMPED WITH CLAMP 10495-01-000 OR CLIP 80734-02-000 EVERY 600. USE SCREW 667-10-12B UNLESS OTHERWISE SPECIFIED.

- Ⓓⓧ BED-QUEEN-BACKWALL
  - Ⓒⓧⓐ EXT RECEPTACLE DPLX 120VAC
  - ⒺⒸ ENTERTAINMENT CTR/EXT CSETTE
  - ⒹⒹ A/C ROOF-HIGH EFFICIENCY ENERGY MANAGMNT SYSTEM
  - ⒹⒺ ENTERTAINMENT CTR-EXT-W/CD
  - ⒹⒻ CODES STANDARDS/USA
  - ⒹⒼ ELECTRICAL SYSTEM 30 AMP
- 99 L35C ⒹⒻ ⒹⒼ ⒹⒺ

FOR ELECTRICAL TORQUE SPECIFICATIONS SEE DWG NO. 128783-01-000

FOR ELECTRICAL CALLOUTS SEE DWG NO. 121339-01-000

WIRING INSTL-BODY (1110R30US)  
 SHEET 4 OF 24  
 131045



INSTALL LABEL ON FRONT PANEL BELOW BREAKERS BETWEEN MOUNTING HOLES

- 3 WIRE TO BE STRIPPED 10 AND SOLDER DIPPED.
- 2 WIRE MUST BE 600 LONG INSIDE BOX. ALL OTHER TO BE 300 LONG.
1. ALL GROUND WIRES TO BE COVERED WITH TUBING 8041-02-000.
- NOTES:

FOR ELECTRICAL TORQUE SPECIFICATIONS SEE DWG NO. 128783-01-000

FOR ELECTRICAL CALLOUTS SEE DWG NO. 121339-01-000

49X BED-QUEEN - BACKWALL

456 BED-TWINS

1E3 ENERGY MANAGEMNT SYSTEM

1B1 CODES STANDARDS/USA

120 ELECTRICAL SYSTEM 30 AMP

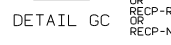
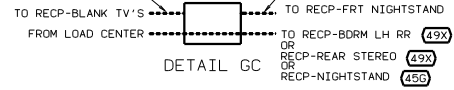
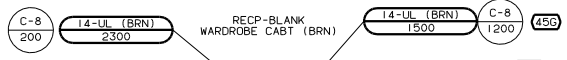
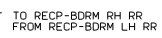
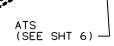
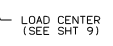
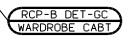
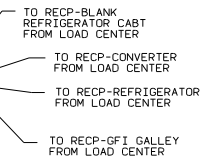
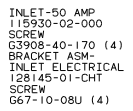
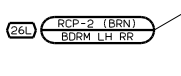
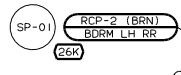
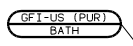
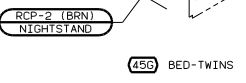
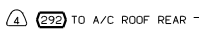
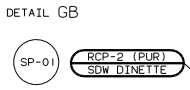
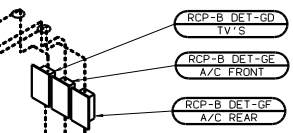
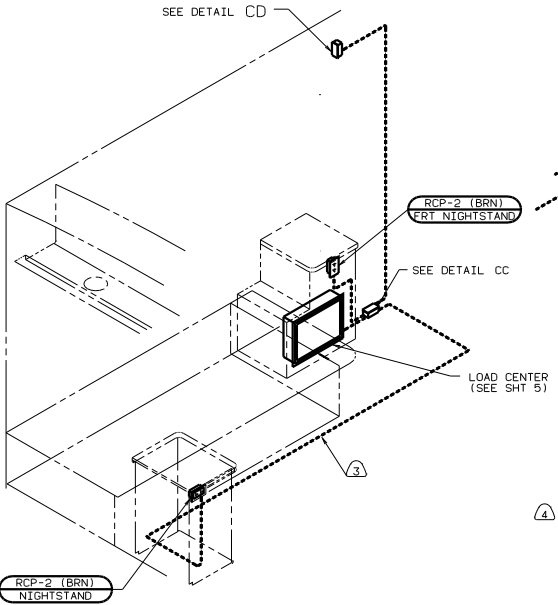
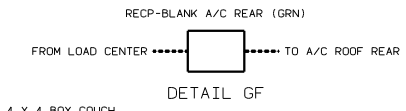
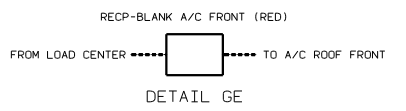
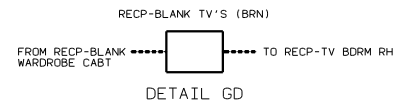
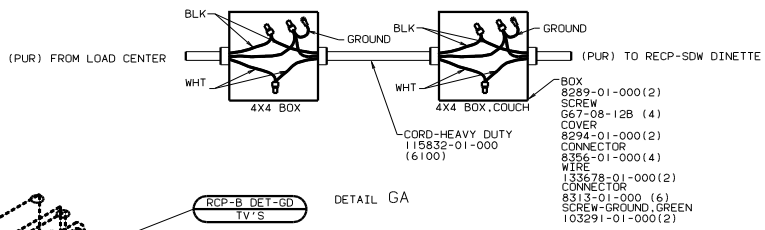
99 L35C 120 1B1 1E3

FILE: 121339-01-000

WIRING INSTL-BODY(30 LC US)

131045





- ⑦ ROUTE WIRE IN SIDEWALL DURING INSTALLATION.
- ⑥ WIRE ROUTED IN SIDEWALL.
- ⑤ SEE GENERATOR INSTL FOR ADDITIONAL INFORMATION.
- ④ WIRE ROUTED IN ROOF.
- ③ WIRE ROUTED BELOW FLOOR.

2. ALL WIRES ARE TO BE CLAMPED WITH CLAMP 10497-05-000 WITHIN 200 OF OUTLET BOXES AND SPLICES. USE SCREW 667-10-12B.

1. ALL WIRE TO BE CLAMPED WITH CLAMP 10495-01-000 OR CLIP 80734-02-000 EVERY 700. USE SCREW 667-10-12B UNLESS OTHERWISE SPECIFIED.



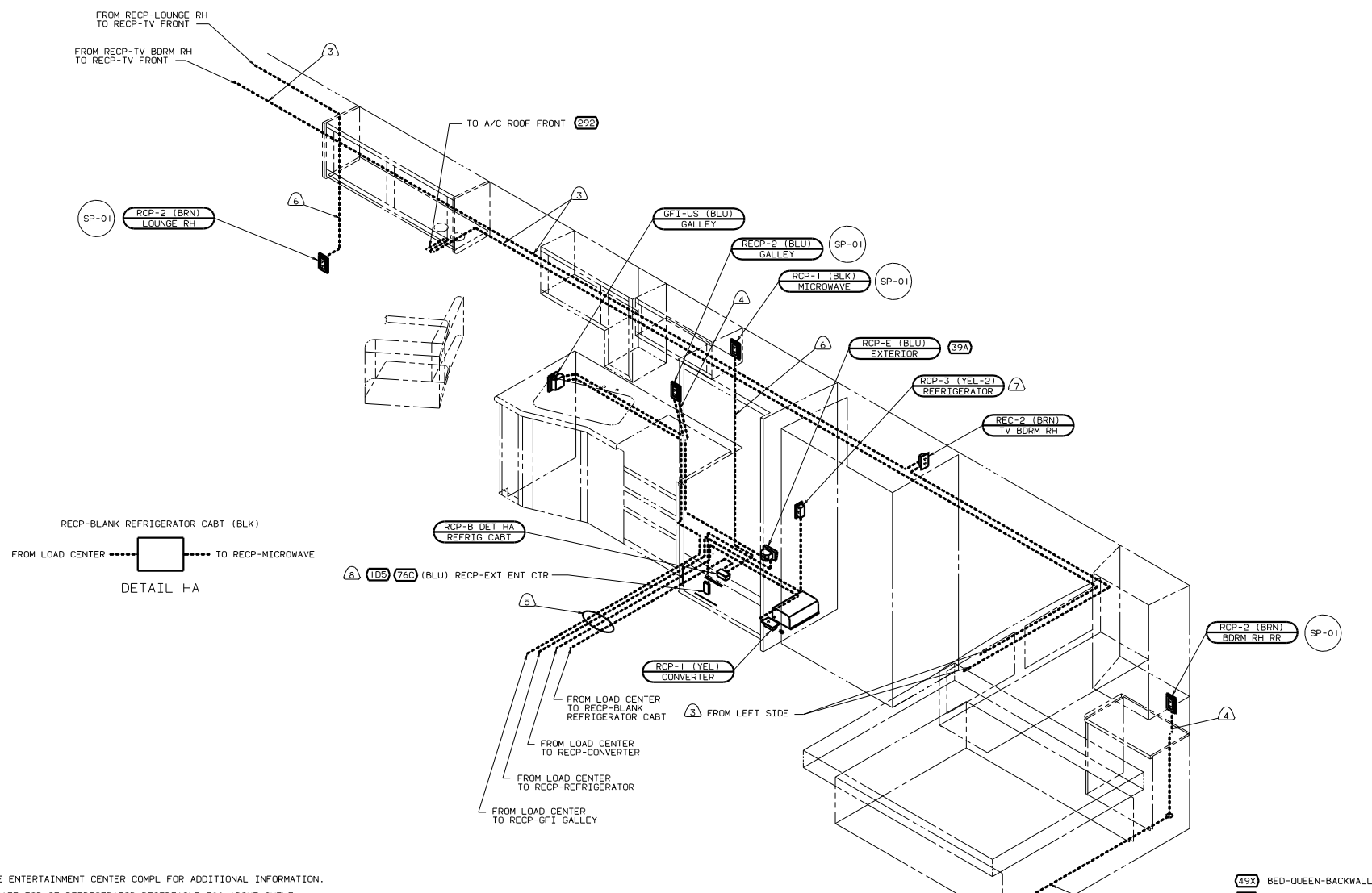
- 26L REAR STEREO SYSTEM W/CASSETTE
- 26K REAR STEREO SYSTEM WITHOUT
- 45G BED-TWINS
- 49X BED-QUEEN-BACKWALL
- 292 A/C ROOF-HIGH EFFICIENCY
- 78J ELECTRICAL SYSTEM - 50 AMP
- 26G CODES/STANDARDS-CSA/CMVSS
- 1E3 ENERGY MANEGMNT SYSTEM

FOR ELECTRICAL TORQUE SPECIFICATIONS SEE DWG NO. 128783-01-000

FOR ELECTRICAL CALLOUTS SEE DWG NO. 121339-01-000

99 L35C (1B) (78J) (1E3)  
 WIRING INSTL-BODY (110150US)  
 SHEET 7 OF 24  
 131045





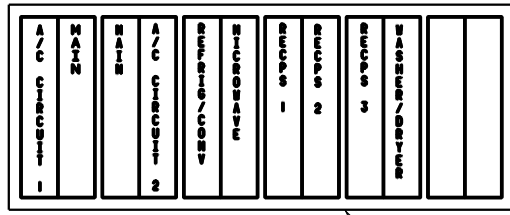
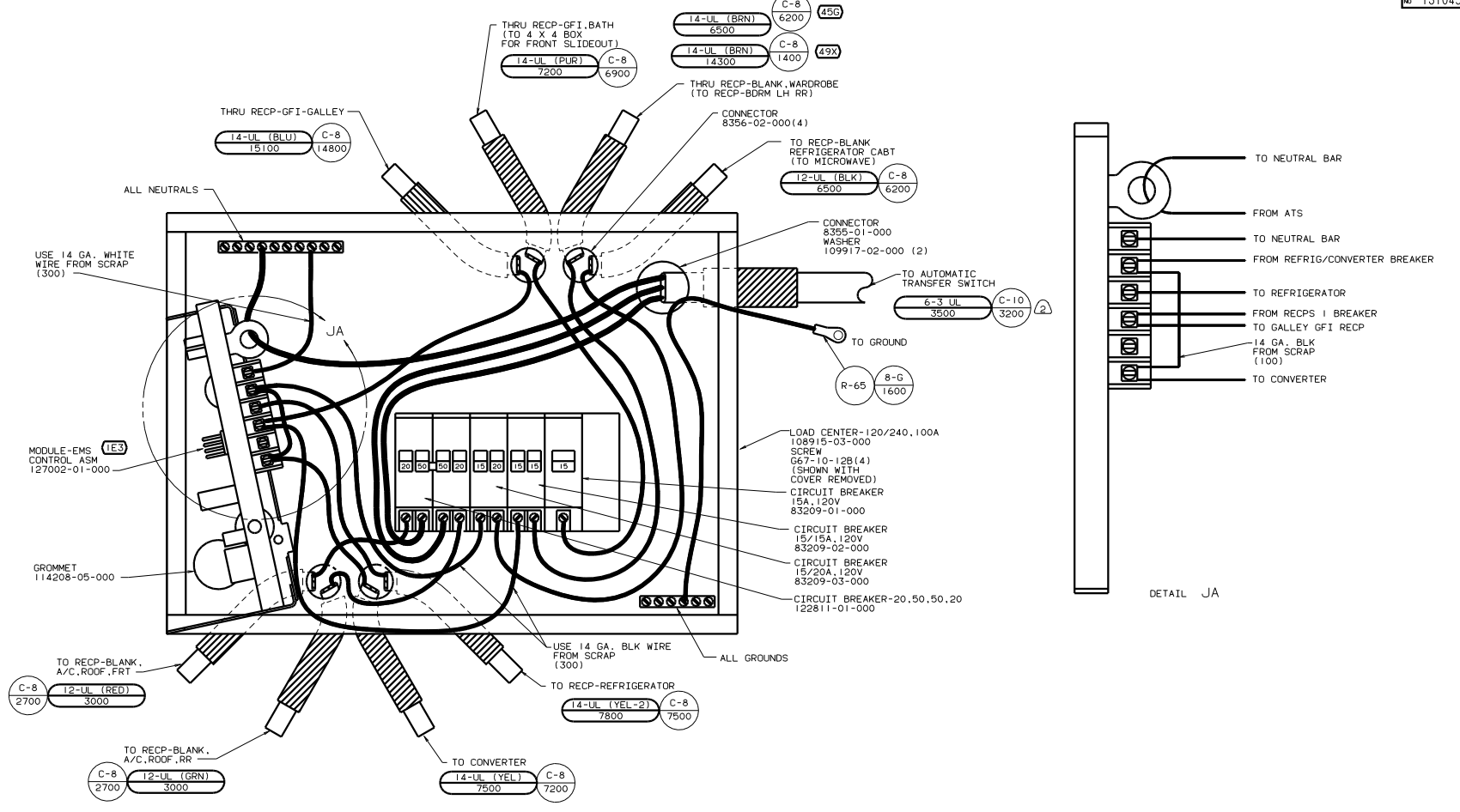
- Ⓐ SEE ENTERTAINMENT CENTER COMPL FOR ADDITIONAL INFORMATION.
  - Ⓑ LOCATE TOP OF REFRIGERATOR RECEPTACLE 300 ABOVE SHELF.
  - Ⓒ WIRE IN SIDEWALL.
  - Ⓓ WIRE ROUTED BELOW FLOOR.
  - Ⓔ WIRE ROUTED THRU SIDEWALL.
  - Ⓕ WIRE IN ROOF.
2. ALL WIRES ARE TO BE CLAMPED WITH CLAMP 10497-05-000 WITHIN 200 OF OUTLET BOXES AND SPLICES. USE SCREW G67-10-12B.
1. ALL WIRE TO BE CLAMPED WITH CLAMP 10495-01-000 OR CLIP 80734-02-000 EVERY 600. USE SCREW G67-10-12B UNLESS OTHERWISE SPECIFIED.

- Ⓓⓧ BED-QUEEN-BACKWALL
- ⓧⒶ EXT RECEPTACLE DPLX 120VAC
- ⓧⒸ ENTERTAINMENT CTR/EXT CSETTE
- ⓧⒹ A/C ROOF-HIGH EFFICIENCY
- Ⓔⓧ ENERGY MANAGEMNT SYSTEM
- ⒺⒹ ENTERTAINMENT CTR-EXT-W/CD
- ⒺⒻ CODES STANDARDS/USA

FOR ELECTRICAL TORQUE SPECIFICATIONS SEE DWG NO. 128783-01-000	(X-X)	FOR ELECTRICAL CALLOUTS SEE DWG NO. 121339-01-000
--	-------	---

99 L35C (1B1) (78J) (1E3)

TITLE: WIRING INSTL - BODY (110R50US)	
NO. OF SHEETS: 8	SHEET NO. 8 OF 24
DATE: 1.6	131045



INSTALL LABEL ON FRONT PANEL BELOW BREAKERS BETWEEN MOUNTING HOLES

② WIRE MUST BE 600 LONG INSIDE BOX, ALL OTHERS TO BE 300 LONG.  
1. ALL GROUND WIRES TO BE COVERED WITH TUBING 8041-02-000.

NOTES:

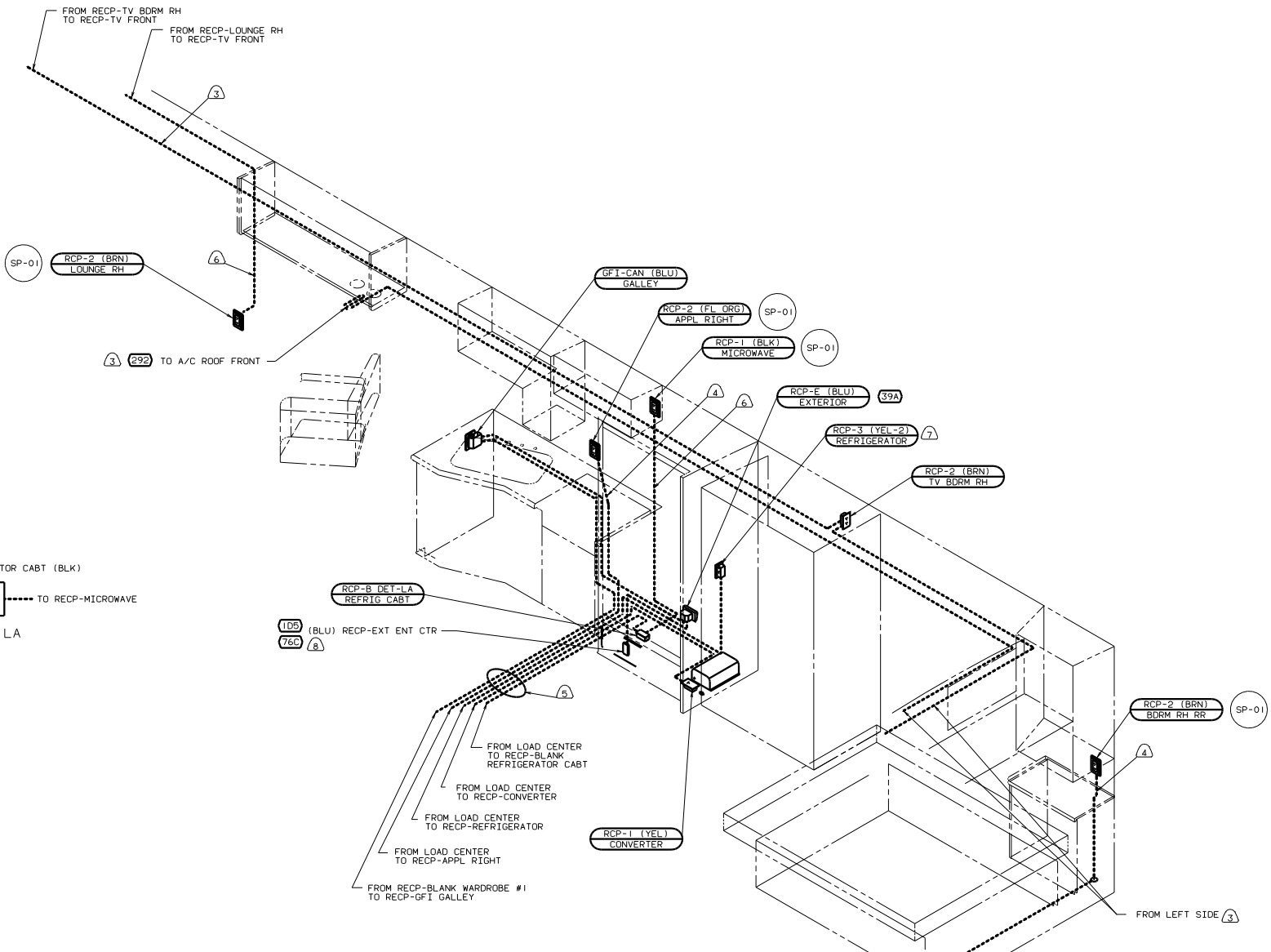
- (49X) BED-QUEEN - BACKWALL
  - (45G) BED-TWINS
  - (78J) ELECTRICAL SYSTEM - 50 AMP
  - (IE3) ENERGY MANAGMNT SYSTEM
  - (IB1) CODES STANDARDS/USA
- 99 L35C (IB1) (IE3) (78J)

FOR ELECTRICAL TORQUE SPECIFICATIONS SEE DWG NO. 128783-01-000

(X-X) FOR ELECTRICAL CALLOUTS SEE DWG NO. 121339-01-000

FILE: WIRING INSTL-BODY(50 LC US)  
131045





- ⑧ SEE ENTERTAINMENT CENTER COMPL FOR ADDITIONAL INFORMATION.
- ⑦ LOCATE TOP OF REFRIGERATOR RECEPTACLE 300 ABOVE SHELF.
- ⑥ WIRE IN SIDEWALL.
- ⑤ WIRE ROUTED BELOW FLOOR.
- ④ WIRE ROUTED THRU SIDEWALL.
- ③ WIRE IN ROOF.

2. ALL WIRES ARE TO BE CLAMPED WITH CLAMP 10497-05-000 WITHIN 200 OF OUTLET BOXES AND SPLICES. USE SCREW G67-10-12B.

1. ALL WIRE TO BE CLAMPED WITH CLAMP 10495-01-000 OR CLIP 80734-02-000 EVERY 600. USE SCREW G67-10-12B UNLESS OTHERWISE SPECIFIED.

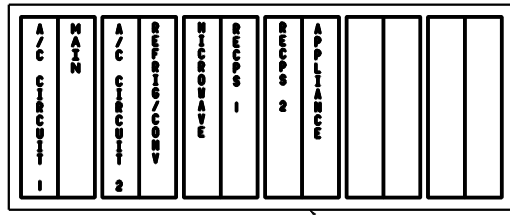
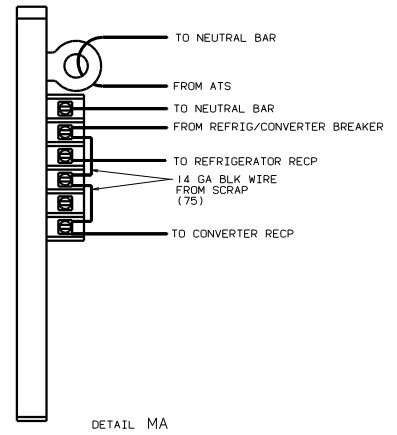
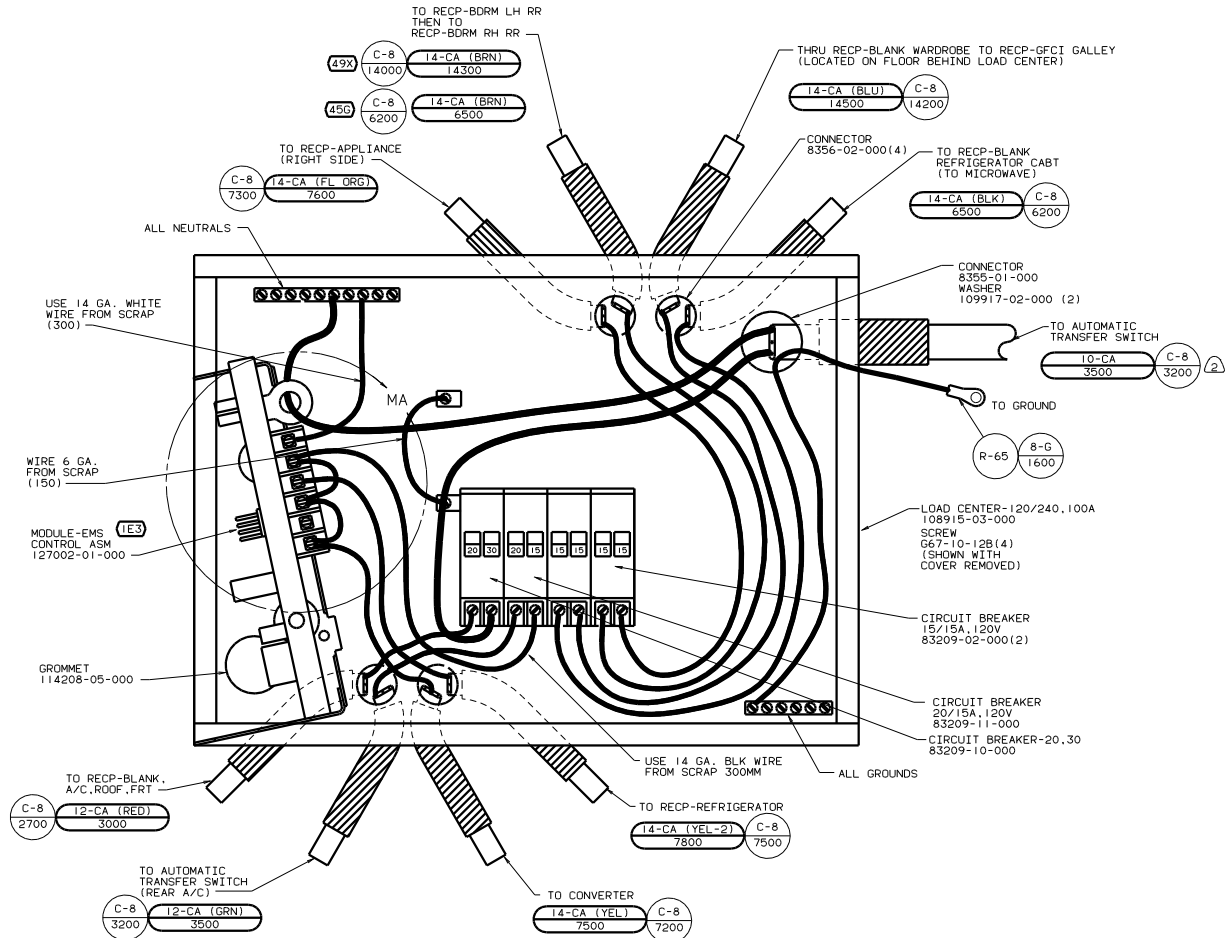
NOTES:

- ④9X BED-QUEEN-BACKWALL
- ③9A EXT RECEPTACLE DPLX 120VAC
- ②65 CODES/STANDARDS-CSA/CMVSS
- ①E3 ENERGY MANAGMNT SYSTEM
- ①D5 ENTERTAINMENT CTR-EXT-W/CD
- ①20 ELECTRICAL SYSTEM 30 AMP

99 L35C (265) (120) (1E3)  
 WIRING INSTL-BODY(110R30CAN)  
 SHEET 11 OF 24 1E3 NO 131045

FOR ELECTRICAL TORQUE SPECIFICATIONS SEE DWG NO. 128783-01-000

FOR ELECTRICAL CALLOUTS SEE DWG NO. 121339-01-000



INSTALL LABEL ON FRONT PANEL BELOW BREAKERS BETWEEN MOUNTING HOLES

- 2 WIRE MUST BE 600 LONG INSIDE BOX, ALL OTHER TO BE 300 LONG.
1. ALL GROUND WIRES TO BE COVERED WITH TUBING 8041-02-000.

265 CODES/STANDARDS-CSA/CMVSS

1E3 ENERGY MANEMNT SYSTEM

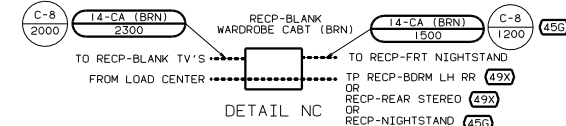
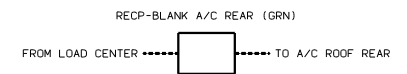
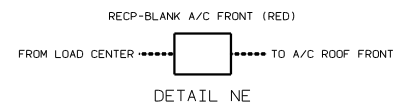
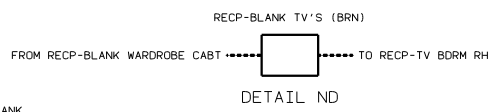
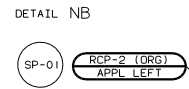
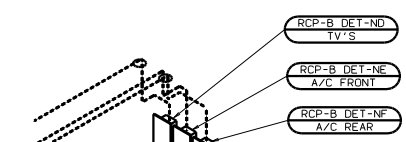
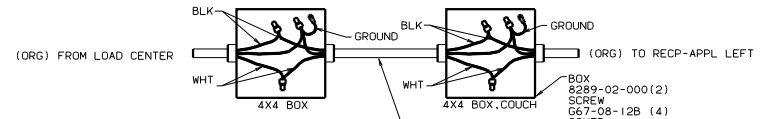
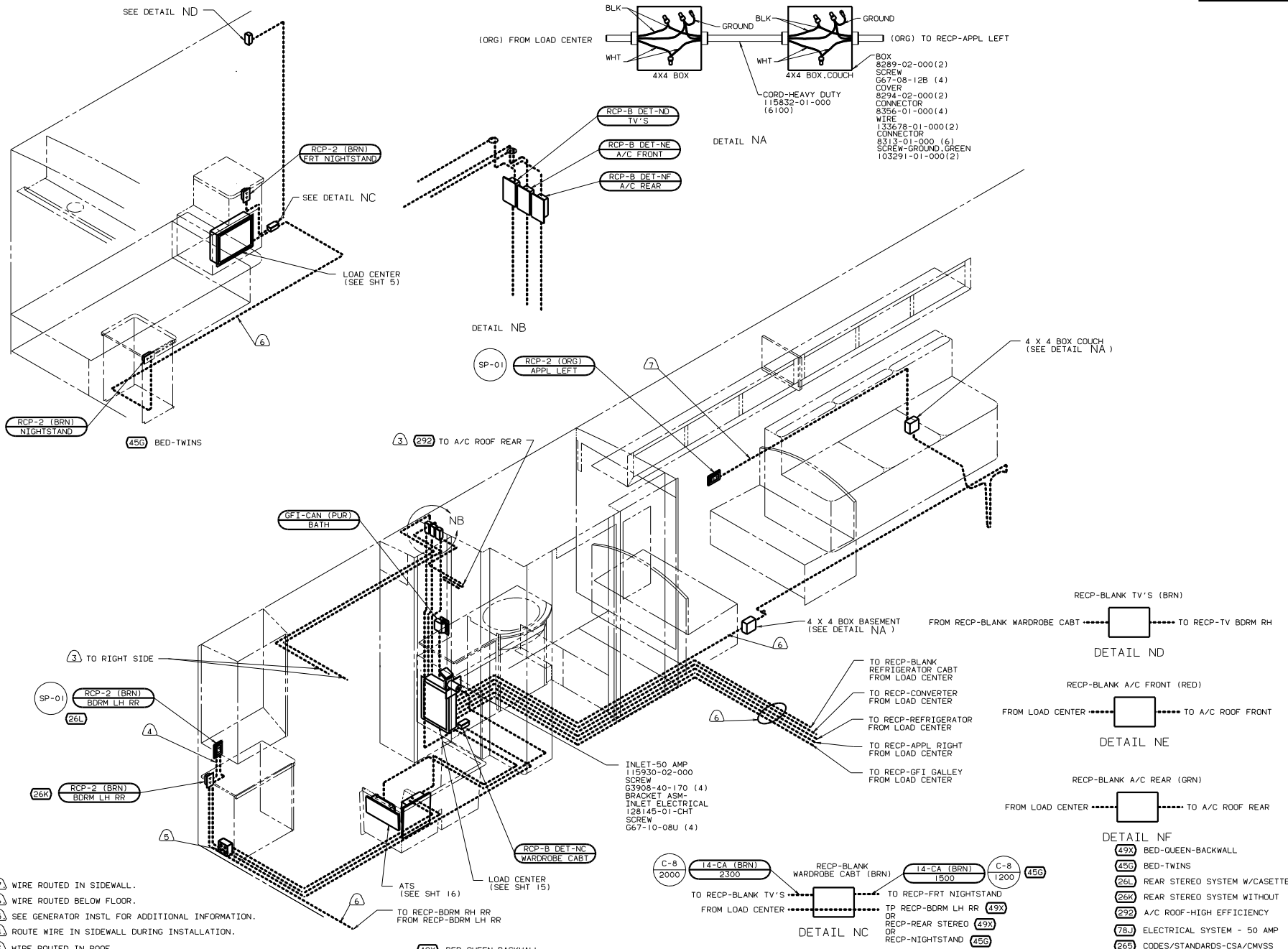
120 ELECTRICAL SYSTEM 30 AMP

99 L35C 265 1E3 120

(X-X) FOR ELECTRICAL CALLOUTS SEE DWG NO. 121339-01-000

WIRING INSTL-BODY(30 LC CAN)

131045



- ⑦ WIRE ROUTED IN SIDEWALL.
- ⑥ WIRE ROUTED BELOW FLOOR.
- ⑤ SEE GENERATOR INSTL FOR ADDITIONAL INFORMATION.
- ④ ROUTE WIRE IN SIDEWALL DURING INSTALLATION.
- ③ WIRE ROUTED IN ROOF.

2. ALL WIRES ARE TO BE CLAMPED WITH CLAMP 10497-05-000 WITHIN 200 OF OUTLET BOXES AND SPLICES. USE SCREW G67-10-128.

1. ALL WIRE TO BE CLAMPED WITH CLAMP 10495-01-000 OR CLIP 80734-01-000 EVERY 700. USE SCREW G67-10-128 UNLESS OTHERWISE SPECIFIED.

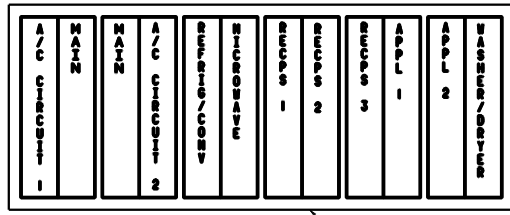
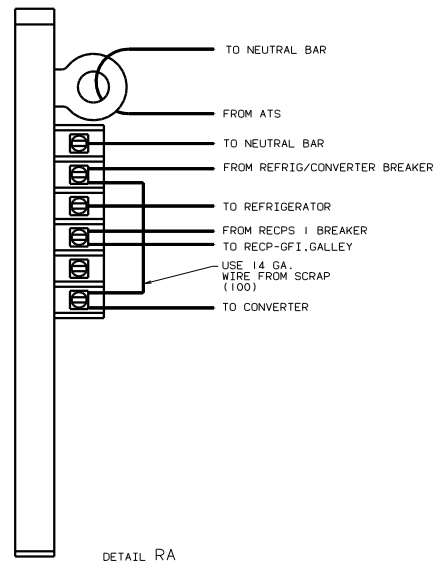
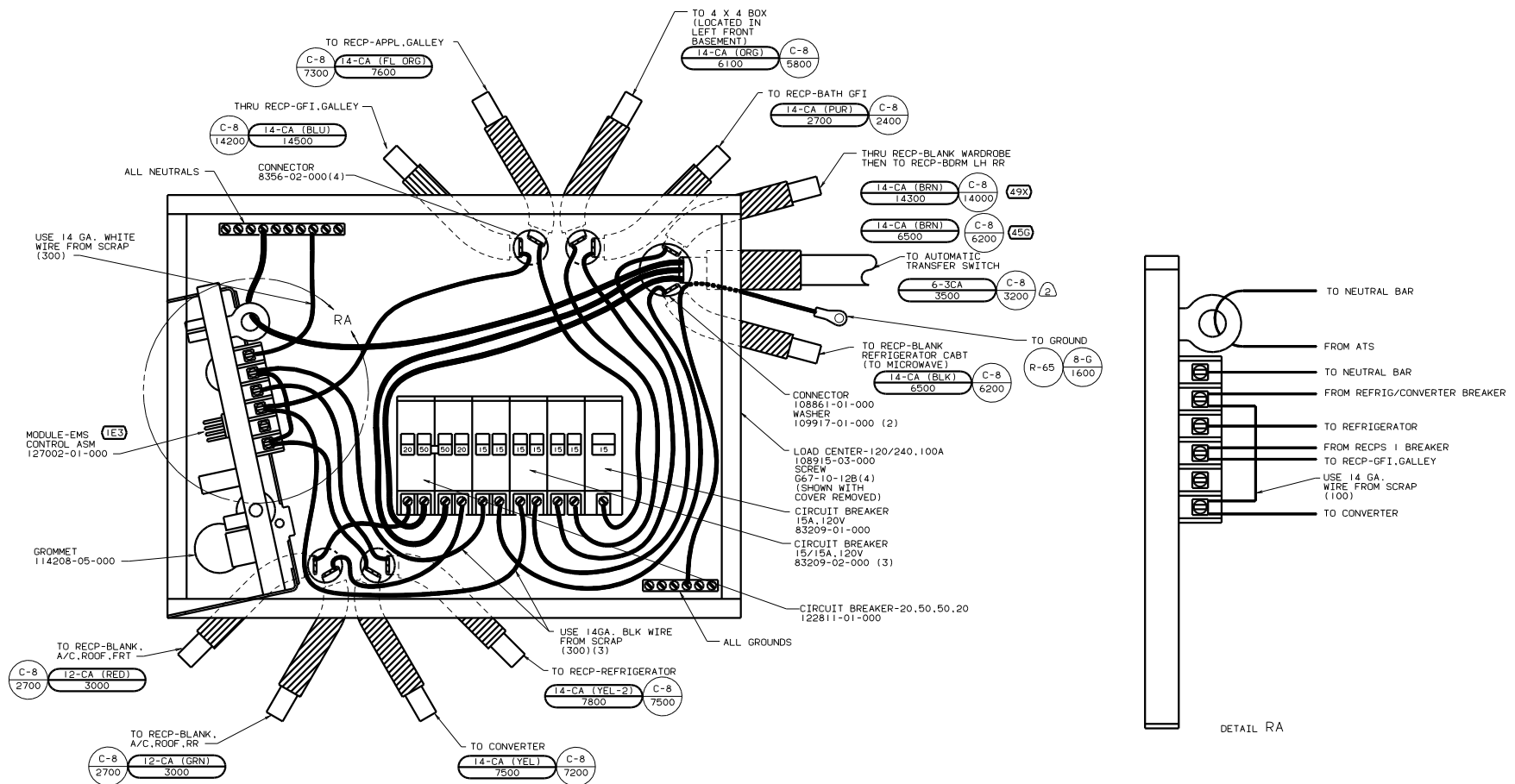
- ④9X BED-QUEEN-BACKWALL
- ④5G BED-TWINS
- ②6L REAR STEREO SYSTEM W/CASETTE
- ②6K REAR STEREO SYSTEM WITHOUT
- ②92 A/C ROOF-HIGH EFFICIENCY
- ⑦8J ELECTRICAL SYSTEM - 50 AMP
- ②6S CODES/STANDARDS-CSA/CMVSS
- ①E3 ENERGY MANAGMNT SYSTEM

FOR ELECTRICAL TORQUE SPECIFICATIONS SEE DWG NO. 128783-01-000

FOR ELECTRICAL CALLOUTS SEE DWG NO. 121339-01-000

99 L35C (26S) (78J) (1E3)  
 WIRING INSTL-BODY(110150CAN)  
 SHEET 13 OF 24 131045





LABEL 95721-30-000

INSTALL LABEL ON FRONT PANEL BELOW BREAKERS BETWEEN MOUNTING HOLES

- (2) WIRE MUST BE 600 LONG INSIDE BOX, ALL OTHERS TO BE 300 LONG.
1. ALL GROUND WIRES TO BE COVERED WITH TUBING 8041-02-000.

NOTES:

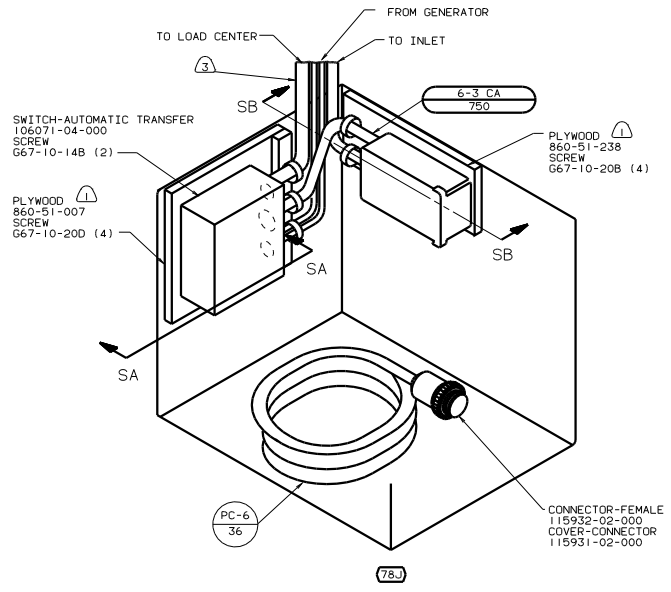
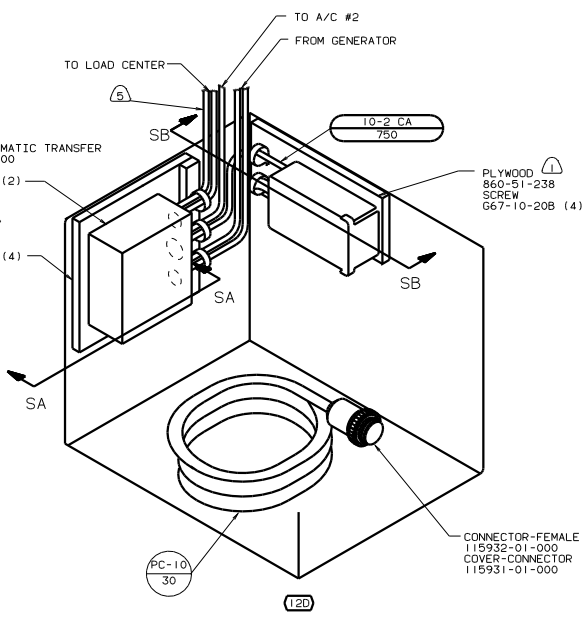
- (49X) BED-QUEEN - BACKWALL
- (450) BED-TWINS
- (78J) ELECTRICAL SYSTEM - 50 AMP CODES/STANDARDS-CSA/CMVSS
- (265) ENERGY MANAGEMNT SYSTEM
- (IE3)
- 99 L35C (265) (78J) (IE3)

FOR ELECTRICAL TORQUE SPECIFICATIONS SEE DWG NO. 128783-01-000

(X-X) FOR ELECTRICAL CALLOUTS SEE DWG NO. 121339-01-000

TITLE: WIRING INSTL-BODY(50 LC CAN)  
DWG NO. 121339-01-000  
SHEET 15 OF 24  
REV 1E  
131045





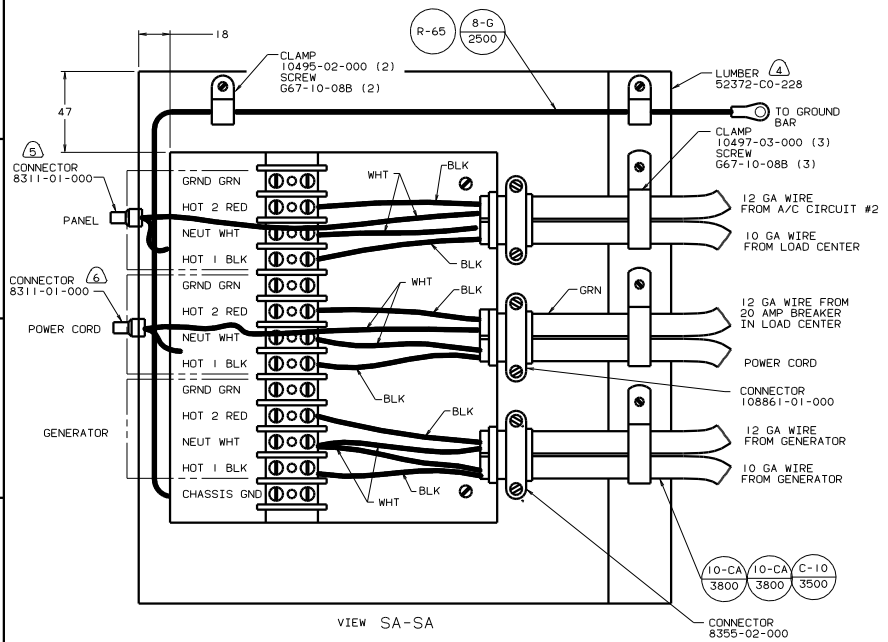
- ⑤ WIRES TO PASS THROUGH HOLE IN POWER CORD COMPARTMENT.
- ④ FOR CONNECTION OF GROUND WIRES.
- ③ FOR THIS CONNECTION REMOVE NEUTRAL WIRE MARKED BLUE FROM CONNECTIONS MARKED POWER CORD.
- ② FOR THIS CONNECTION REMOVE NEUTRAL WIRE MARKED BLUE FROM CONNECTIONS MARKED PANEL.
- ① PAINT EXPOSED SURFACES BLACK WITH 106112-01-000

NOTES:

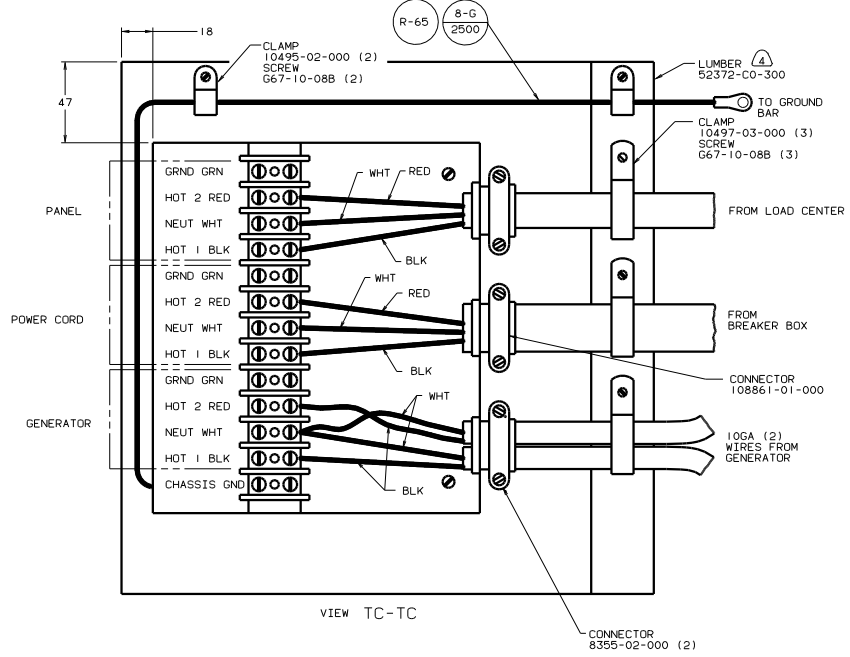
- ⑫ ELECTRICAL SYSTEM 30 AMP
- ⑰ ELECTRICAL SYSTEM-50 AMP
- ⑳ CODES/STANDARDS-CSA/CMVSS

X-X FOR ELECTRICAL CALLOUTS SEE DWG NO. 121339-01-000

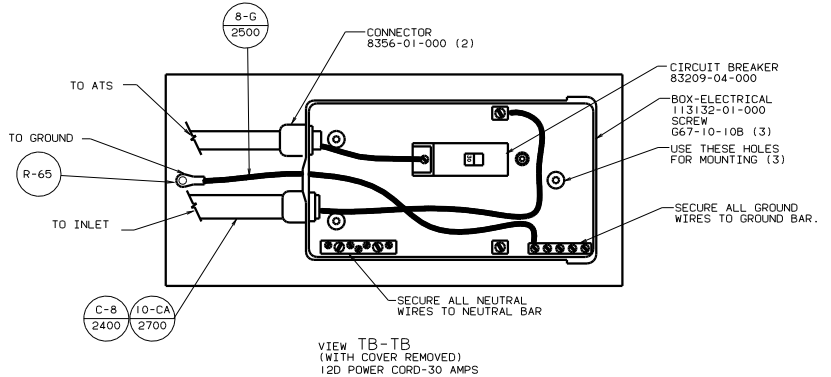
99 L35C ⑳ ⑰ ⑫  
 WIRING INSTL - BODY (ATS/CAN)  
 SHEET 16 OF 24 131045



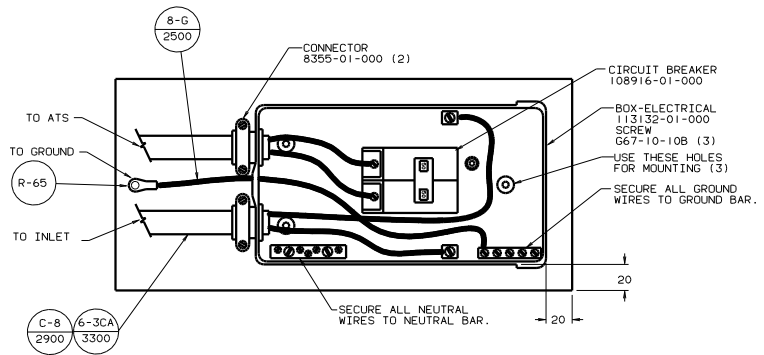
VIEW SA-SA



VIEW TC-TC



VIEW TB-TB (WITH COVER REMOVED) 12D POWER CORD-30 AMPS



VIEW TD-TD (WITH COVER REMOVED)

- 6. FOR THIS CONNECTION REMOVE NEUTRAL WIRE MARKED BLUE FROM CONNECTIONS MARKED POWER CORD.
- 5. FOR THIS CONNECTION REMOVE NEUTRAL WIRE MARKED BLUE FROM CONNECTIONS MARKED PANEL.
- 4. PAINT EXPOSED SURFACES BLACK WITH 106112-01-000.
- 3. ALL 110V STRANDED WIRE W/O TERMINALS TO BE STRIPPED 10MM AND SOLDER DIPPED.
- 2. GROUND WIRES NOT SHOWN FOR CLARITY.
- 1. ALL WIRES TO BE CLAMPED WITH IN 200 OF BOX.

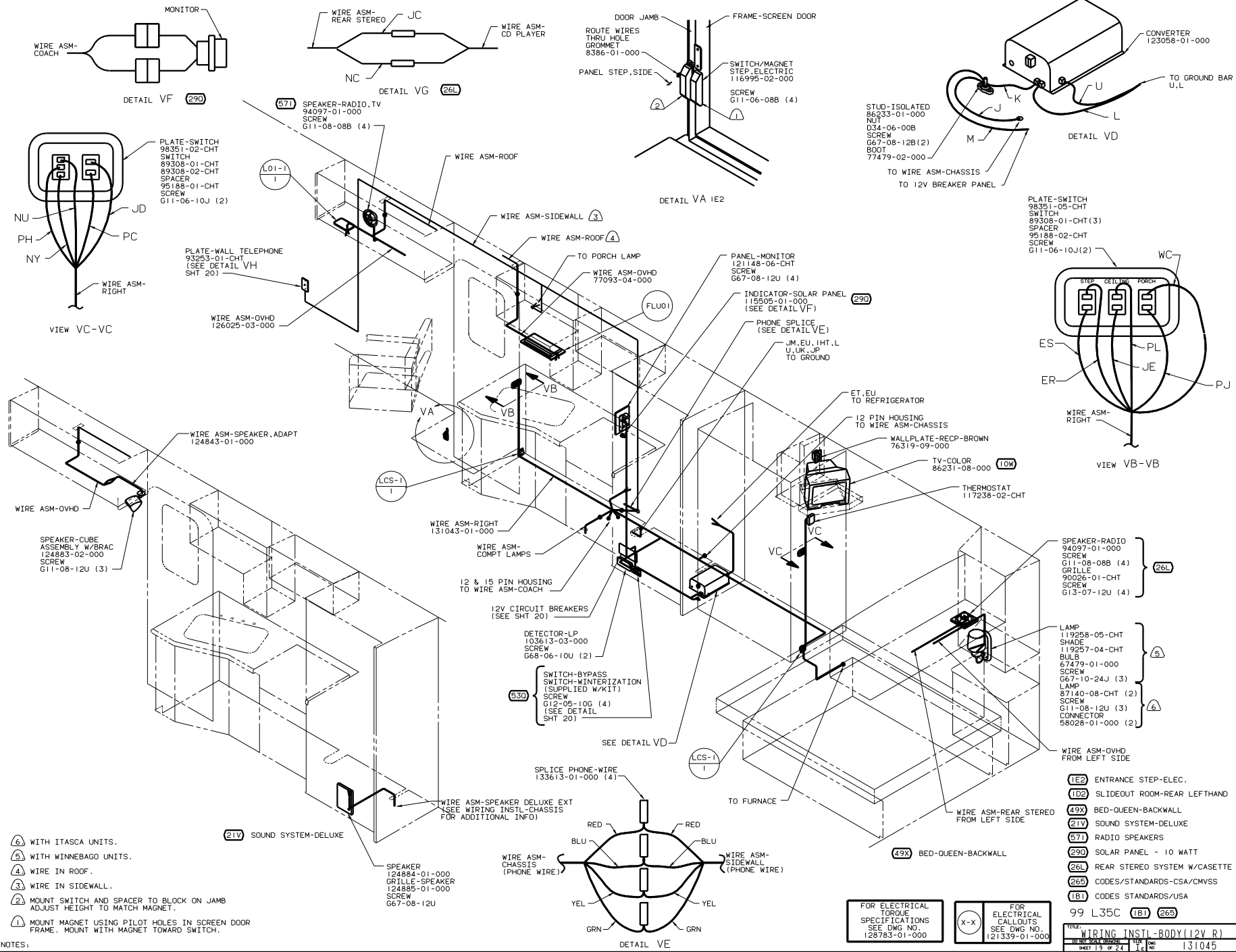
12D ELECTRICAL SYSTEM 30 AMP

78L ELECTRICAL SYSTEM - 50 AMP

- 401 GEN-5.0KW-ONAN-GAS-EMERALD
- 39M GEN-7.0KW ONAN-GAS-MARQUIS
- 265 CODES/STANDARDS-CSA/CMVSS
- 99 L35C 265

TITLE		WIRING INSTL - BODY (ATS/CAN)	
NO. REV	DATE	BY	CHK
1			
SHEET 17 OF 24		131045	





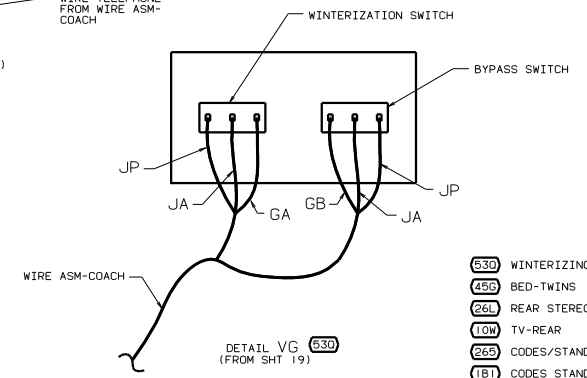
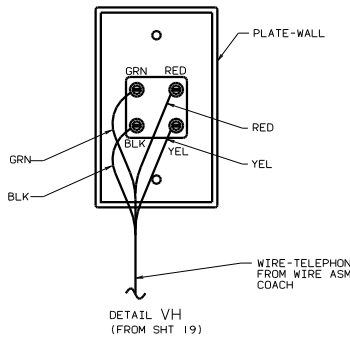
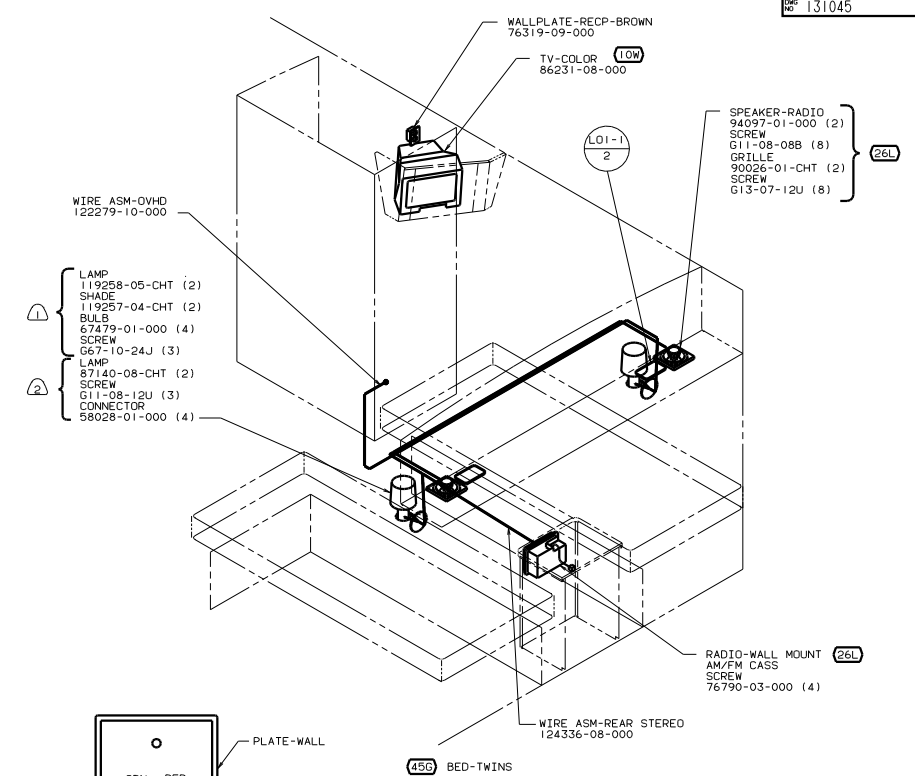
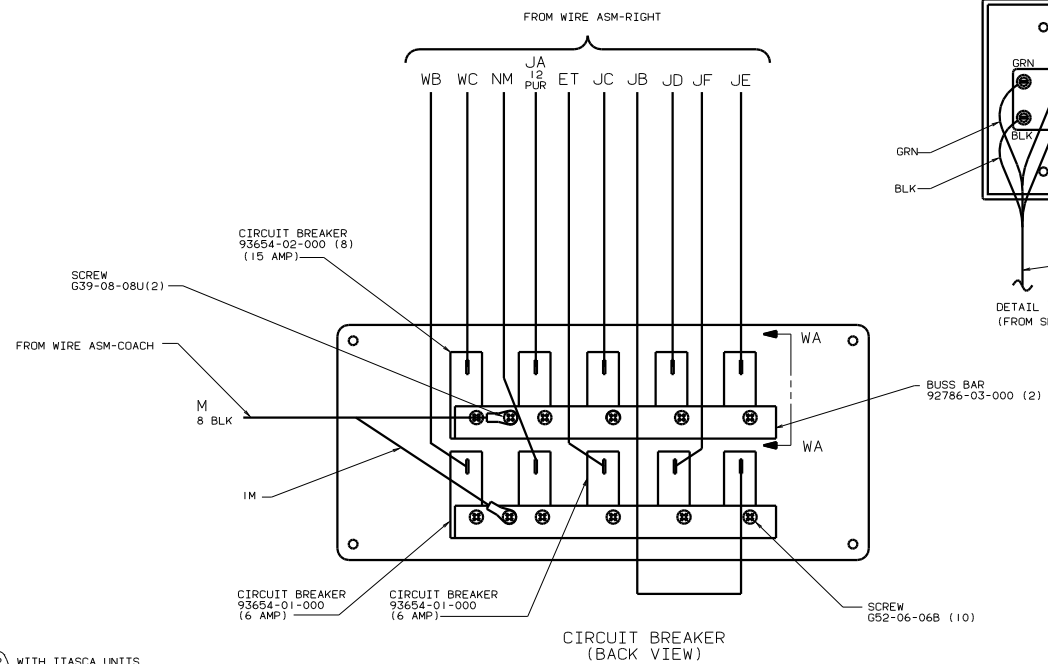
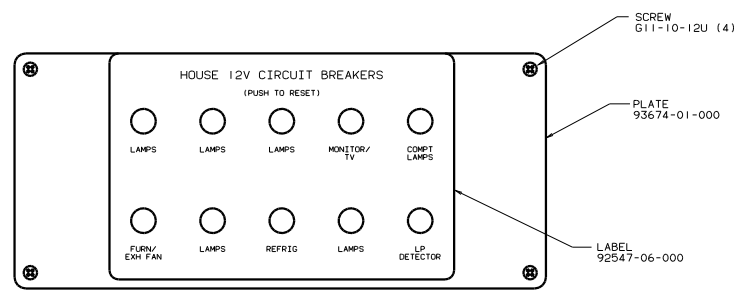
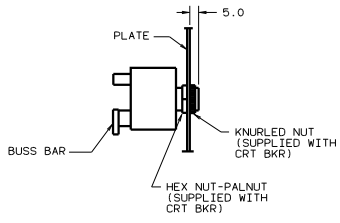
- (6) WITH ITASCA UNITS.
- (5) WITH WINNEBAGO UNITS.
- (4) WIRE IN ROOF.
- (3) WIRE IN SIDEWALL.
- (2) MOUNT SWITCH AND SPACER TO BLOCK ON JAMB ADJUST HEIGHT TO MATCH MAGNET.
- (1) MOUNT MAGNET USING PILOT HOLES IN SCREEN DOOR FRAME. MOUNT WITH MAGNET TOWARD SWITCH.

- (1E2) ENTRANCE STEP-ELEC.
- (1D2) SLIDEOUT ROOM-REAR LEFTHAND
- (49X) BED-QUEEN-BACKWALL
- (21V) SOUND SYSTEM-DELUXE
- (57I) RADIO SPEAKERS
- (290) SOLAR PANEL - 10 WATT
- (26L) REAR STEREO SYSTEM W/CASSETTE
- (26S) CODES/STANDARDS-CSA/CMVSS
- (1B1) CODES STANDARDS/USA
- 99 L35C (1B1) (26S)

FOR ELECTRICAL TORQUE SPECIFICATIONS SEE DWG NO. 126783-01-000

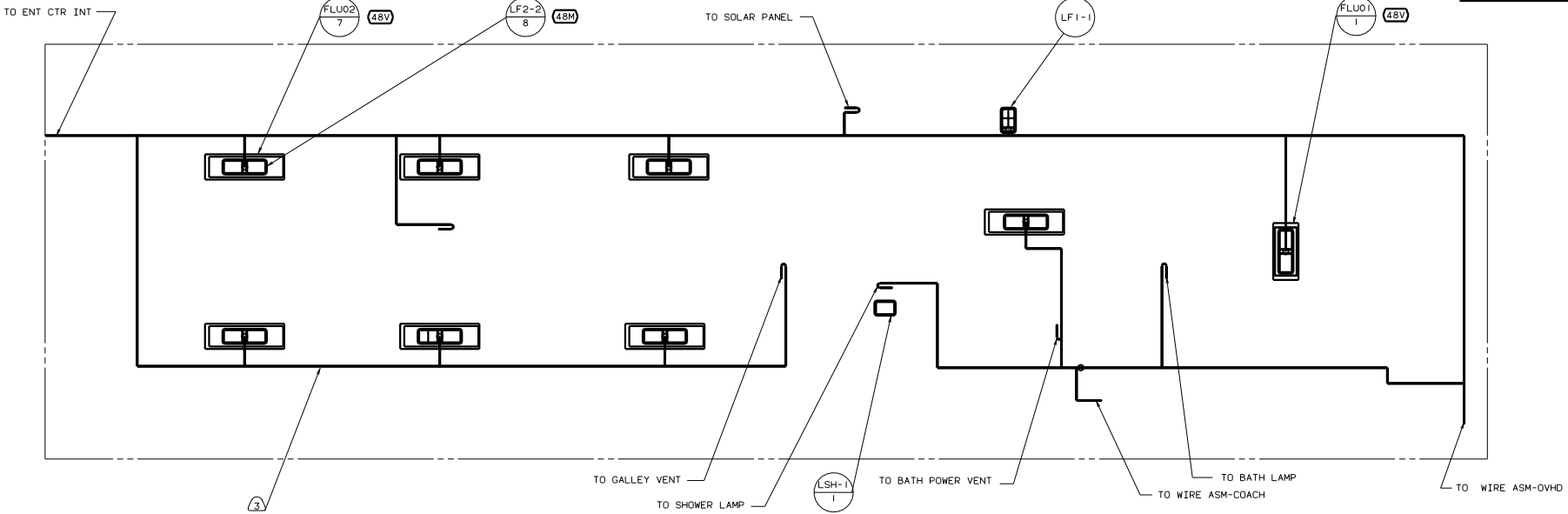
FOR ELECTRICAL CALLOUTS SEE DWG NO. 121339-01-000

TITLE: WIRING INSTL-BODY(12V R)  
 TO THE 50% DRAWING THE DATE: 1/16/05  
 SHEET 19 OF 24 131045

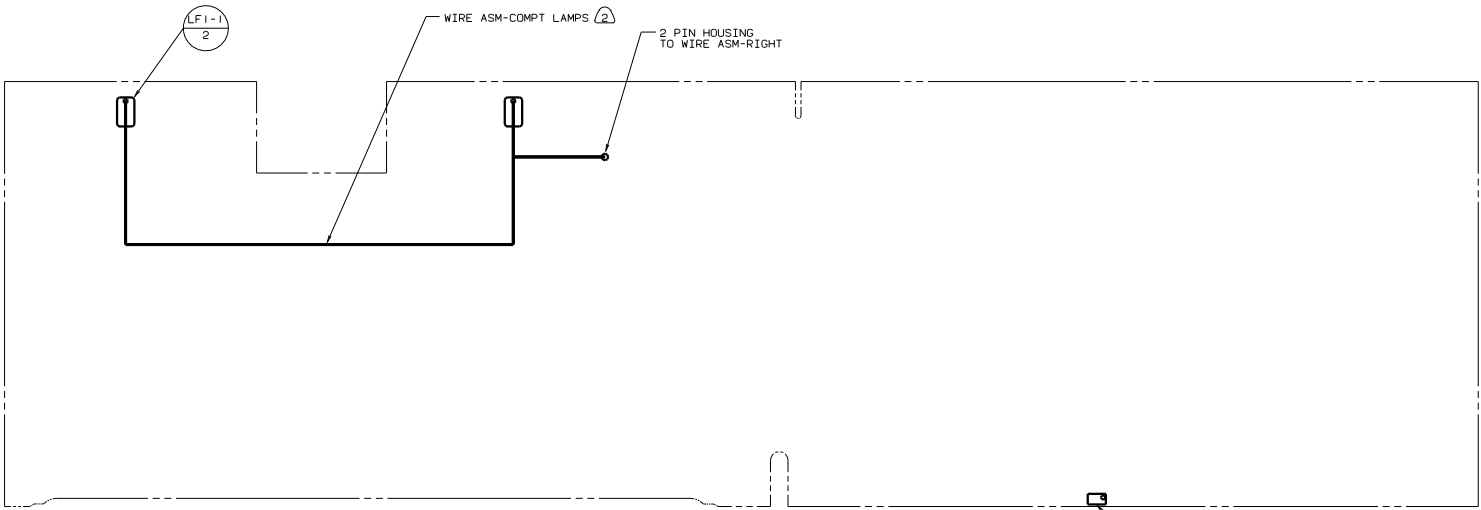


- (530) WINTERIZING KIT
- (450) BED-TWINS
- (26L) REAR STEREO SYSTEM W/CASSETTE
- (10W) TV-REAR
- (26S) CODES/STANDARDS-CSA/CMVSS
- (1B1) CODES STANDARDS/USA
- 99 L35C (1B1) (265)

NOTES:  
 (2) WITH ITASCA UNITS  
 (1) WITH WINNEBAGO UNITS



CEILING LAMPS



COMPARTMENT LAMPS

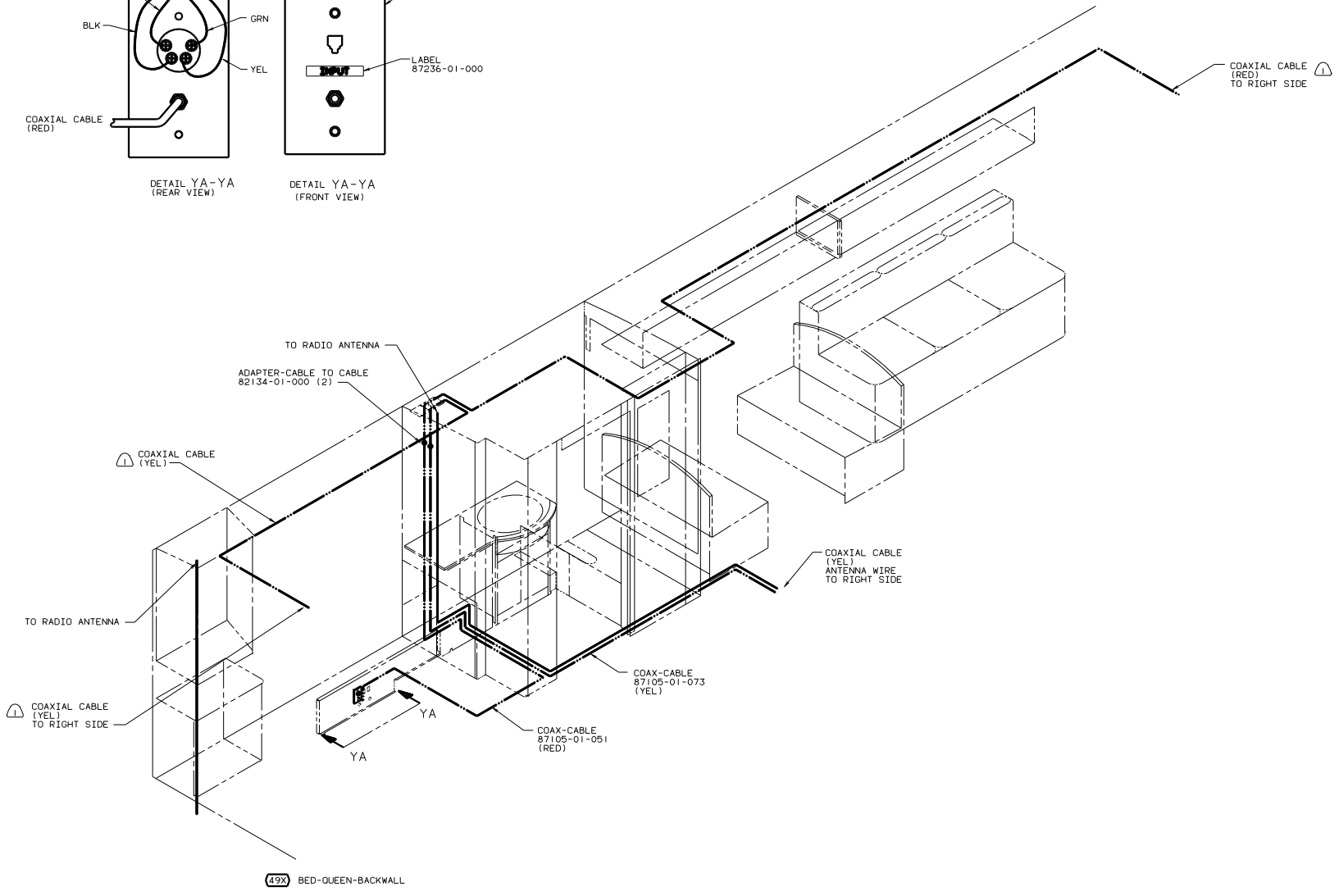
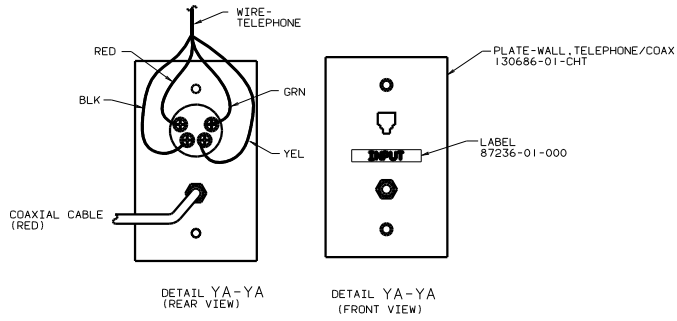
- NOTES:
- (3) WIRE IN ROOF.
  - (2) WIRE ASM ROUTED IN FLOOR.
  - 1. LAMPS TO BE MOUNTED WITH SWITCH OUTBOARD AND 75 ±20 FROM EDGE OF FLOOR.

LAMP  
86280-01-000  
SCREW  
667-10-12U (4)  
CONNECTOR  
58028-01-000

- (48V) LIGHTS-FLUORESCENT
- (48M) LIGHTS-INCANDESCENT
- (265) CODES/STANDARDS-CSA/CMVSS
- (1B1) CODES STANDARDS/USA
- 99 L35C (1B1) (265)

FOR ELECTRICAL CALLOUTS SEE DWG NO. 121339-01-000

TITLE: WIRING INSTL-BODY(12 CL)	
NO. OF SHEETS: 24	SHEET NO: 21
DATE: 11/01/05	DWG NO: 131045



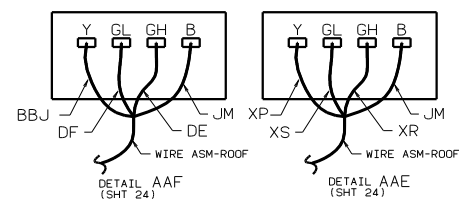
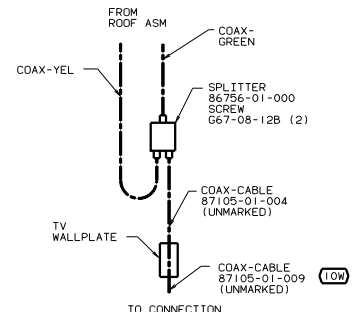
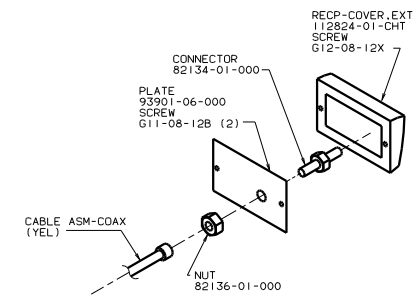
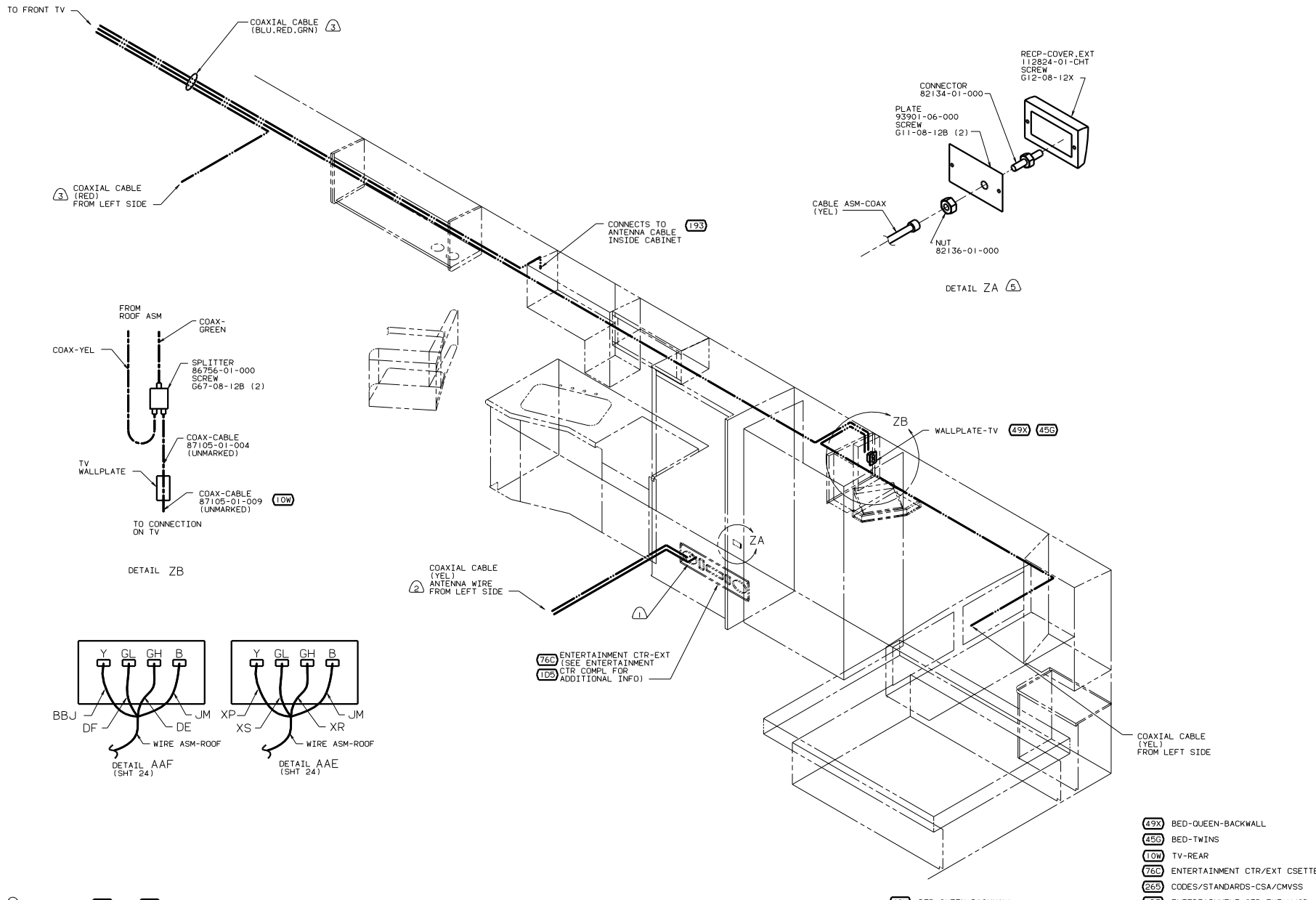
49X BED-QUEEN-BACKWALL

WIRE IN ROOF.

NOTES:

- 49X BED-QUEEN-BACKWALL
- 265 CODES/STANDARDS-CSA/CMVSS
- 181 CODES STANDARDS/USA
- 99 L35C 181 265

TITLE		WIRING ZN51-BODY(COAX L)	
NO. OF SHEETS	22	SHEET NO.	22
DATE		DESIGNER	
DRAWN		131045	



(76D) ENTERTAINMENT CTR-EXT (SEE ENTERTAINMENT CTR COMPL FOR ADDITIONAL INFO)  
 (10S)

- (49X) BED-QUEEN-BACKWALL
- (45S) BED-TWINS
- (10W) TV-REAR
- (76C) ENTERTAINMENT CTR/EXT CSETTE
- (26S) CODES/STANDARDS-CSA/CMVSS
- (10S) ENTERTAINMENT CTR-EXT-W/CD
- (1B1) CODES STANDARDS/USA
- (193) TV ANTENNA
- 99 L35C (1B1) (26S)

- (5) USE WITHOUT (76C) & (10S)
- (4) WIRE ROUTED BELOW FLOOR.
- (3) WIRE IN ROOF.
- (2) FROM RADIO ANTENNA.
- (1) TO ENTERTAINMENT CTR.



