



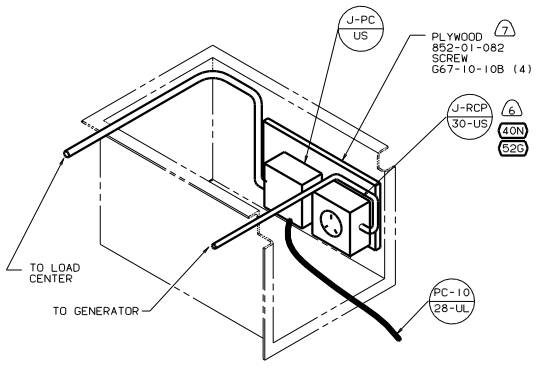
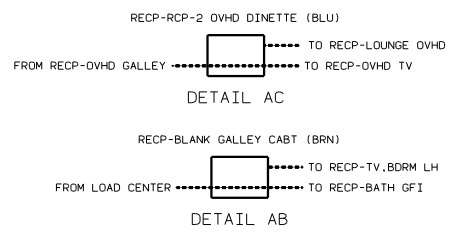
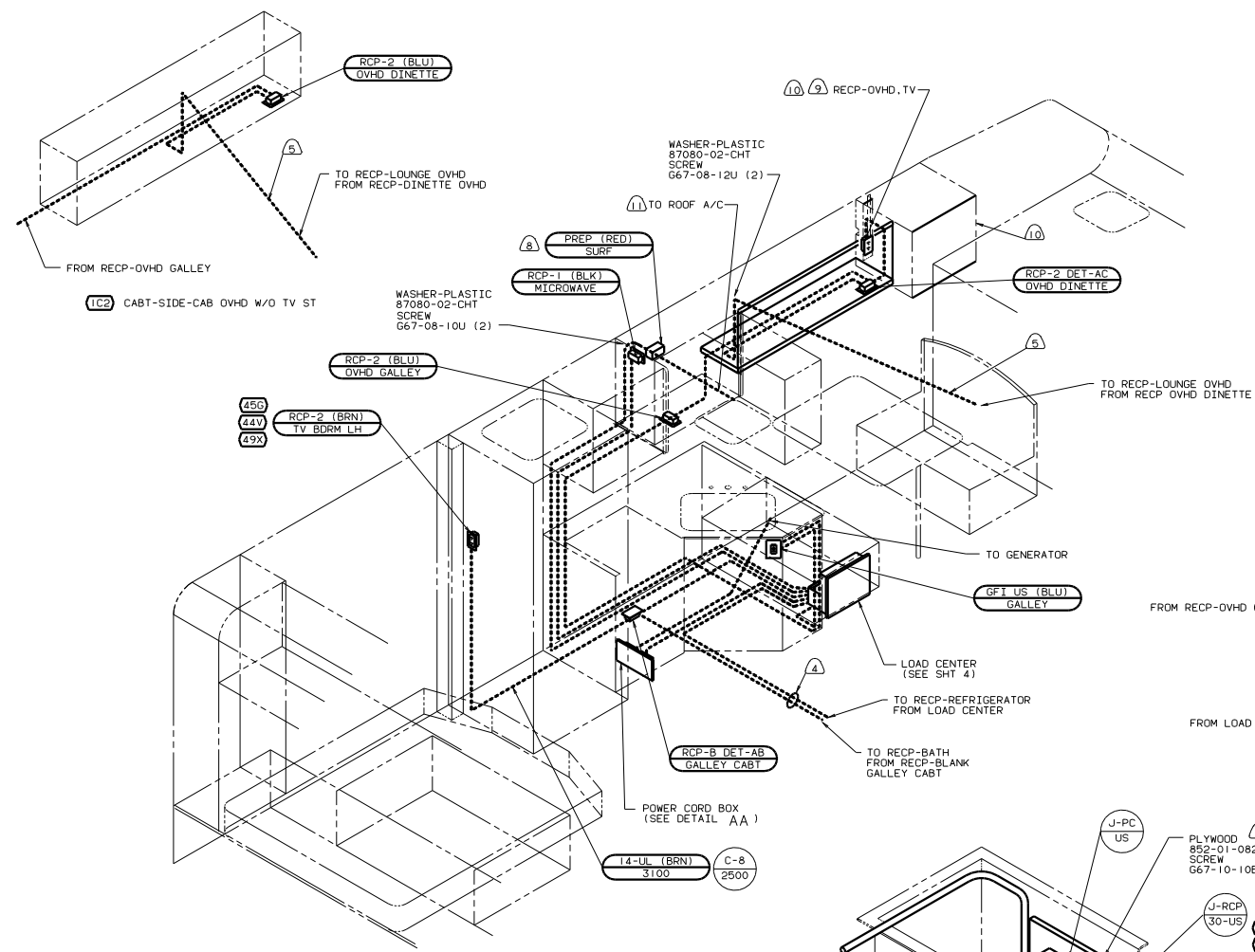
**DANGER**

**Danger of electrical shock, burns or death.** Always remove all power sources before attempting any repair, service or diagnostic work. Power can be present from shore power, generator, inverter or battery. All power sources must be disabled and secured before performing any service.



**CAUTION**

If you lack the skills, tools or equipment to perform diagnostic or repair work leave such work to an authorized Winnebago Industries dealer or other qualified shop.



- (8) NOT USED WITH (29D)
  - (7) PAINT EXPOSED SURFACE BLACK WITH 106112-01-000.
  - (6) INSTALL RECEPTACLE WITH GROUND TOWARD OUTBOARD SIDE OF VEHICLE.
  - (5) WIRE ROUTED IN ROOF.
  - (4) WIRE ROUTED THRU FLOOR.
3. ALL GROUND WIRES TO BE COVERED WITH TUBING 8041-02-000.
2. ALL 110V WIRES ARE TO BE CLAMPED WITH CLAMP 10495-01-000 WITHIN 200 OF OUTLET BOXES. USE SCREW G67-10-12B.
1. ALL WIRES TO BE CLAMPED WITH CLAMP 10495-01-000 OR CLIP 80734-01-000 EVERY 600. USE SCREW G67-10-12B UNLESS OTHERWISE SPECIFIED.

- (11) ROUTE WIRE THRU ROOF.
- (10) SEE WIRING INSTL-TV/VCR. SIDE FOR ADDITIONAL INFORMATION.
- (9) NOT USED WITH (21D) (42T) (78A)

- (49X) BED-QUEEN-BACKWALL
- (1C2) CABT-SIDE-CAB OVHD W/O TV ST
- (1C1) CABINET-SIDE W/O TV STORAGE
- (78A) TV-13" WITH VCP 12V
- (42T) TV-19" FRONT & SWITCHING SYS
- (29D) A/C ROOF-ONE 13,500 BTU
- (21D) TV-19" W/VCR/SWITCHING SYS
- (52C) GEN-3.6KW ONAN LP
- (40N) GEN-4.0KW-ONAN-GAS-MICROLITE
- (12D) ELECTRICAL SYSTEM 30 AMP
- (1B1) CODES STANDARDS/USA

99 329N (1B1) (12D)

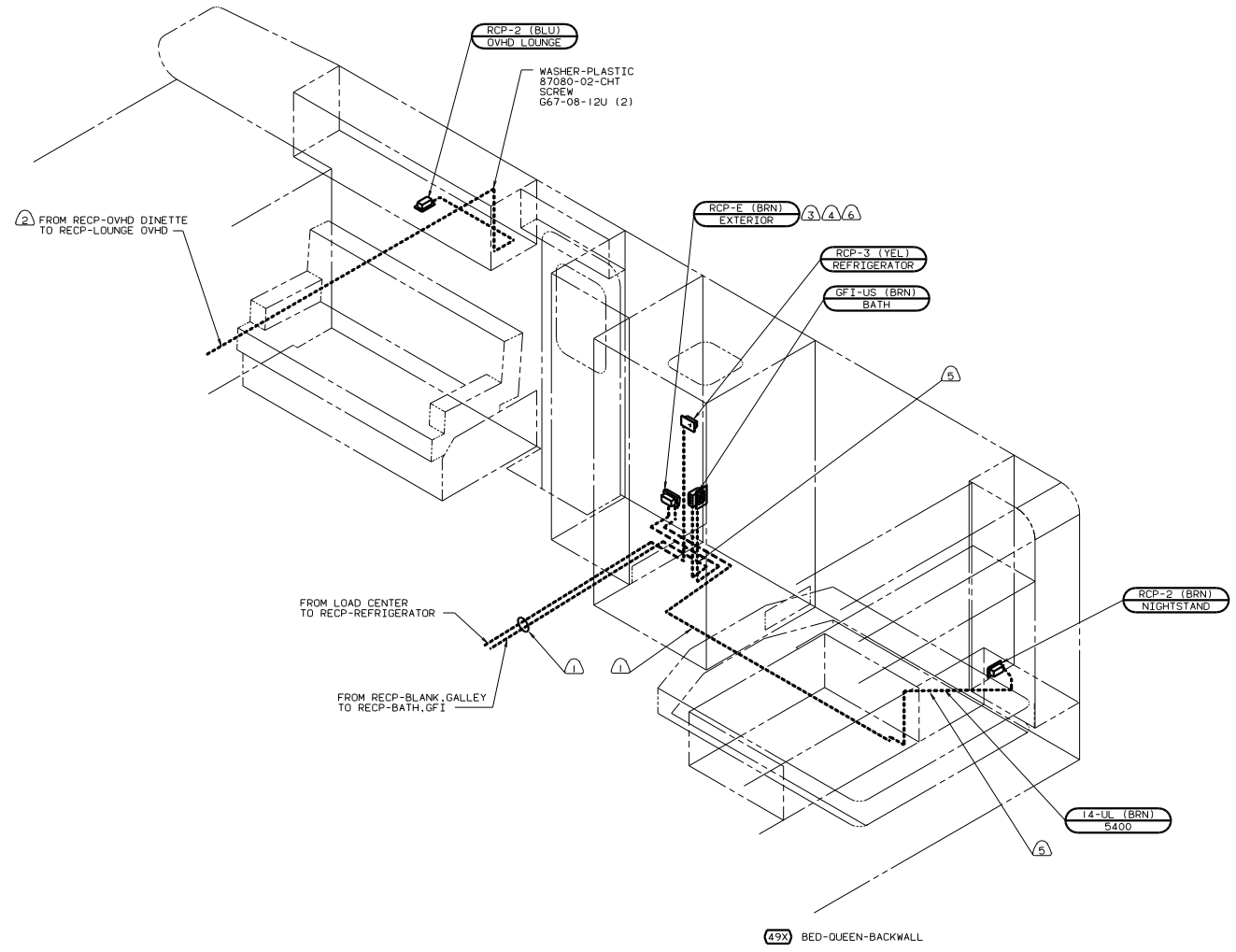
**WINNEBAGO**

QTY	DATE	UNSPECIFIED TOLERANCES ARE:	MATERIAL
OMP	DATE	WHOLE OR 1/16"	
F/F	DATE	ONE-PLACE (1/32)"	
D/E	DATE	HOT-PLATE (1/64)"	
D/E	DATE	MILL	
DATE	DATE	INDUS. WARE	
DATE	DATE	PRODUCTION	

WIRING INSTL-BODY (110130USA)  
 130723

FOR ELECTRICAL TORQUE SPECIFICATIONS SEE DWG NO. 128783-01-000

(X-X) FOR ELECTRICAL CALLOUTS SEE DWG NO. 121339-01-000



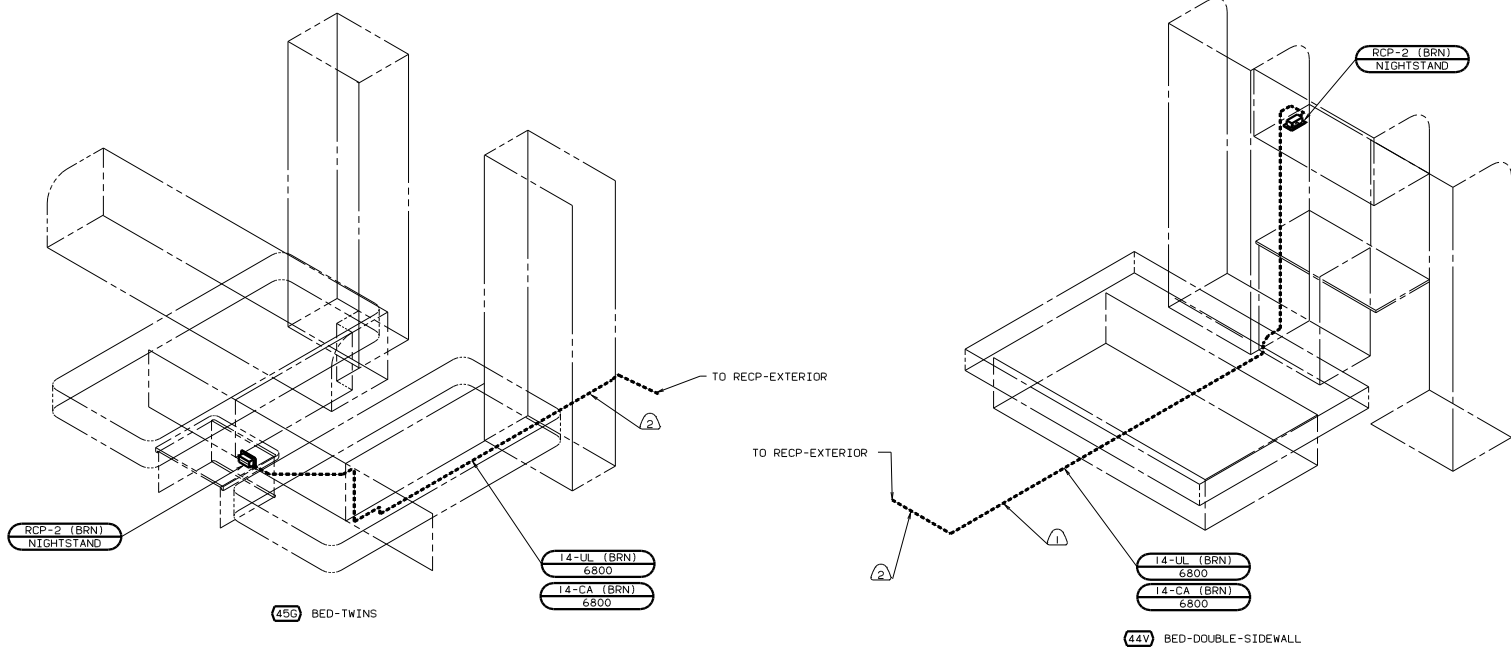
7. SEE SHT 3 FOR TWIN AND DOUBLE BEDS.  
 (6) SEE ENT CTR INSTL-EXT FOR ADDITIONAL INFORMATION.  
 (5) ADD CONDUIT 41953-01-000 IN THIS AREA.  
 (4) NOT USED WITH (76C)  
 (3) SEAL BACK SIDE OF RECP FACE.  
 (2) WIRE ROUTED IN ROOF.  
 (1) WIRE ROUTED THRU FLOOR.

- (76C) ENTERTAINMENT CTR/EXT CSETTE  
 (49X) BED-QUEEN-BACKWALL  
 (1B1) CODES STANDARDS/USA  
 (12D) ELECTRICAL SYSTEM 30 AMP  
 99 329N (1B1) (12D)

FOR ELECTRICAL TORQUE SPECIFICATIONS SEE DWG NO. 128763-01-000

(X-X) FOR ELECTRICAL CALLOUTS SEE DWG NO. 121339-01-000

TITLE: WIRING INSTL-BODY (110R30USA)	
NO. OF SHEETS: 12	SHEET: 2 OF 12
DATE: 11/03/05	REV: 1
130723	



- ② ADD CONDUIT 41953-01-000 IN THIS AREA.
- ① WIRE ROUTED THRU FLOOR.

FOR ELECTRICAL TORQUE SPECIFICATIONS SEE DWG NO. 128783-01-000

FOR ELECTRICAL CALLOUTS SEE DWG NO. 121339-01-000

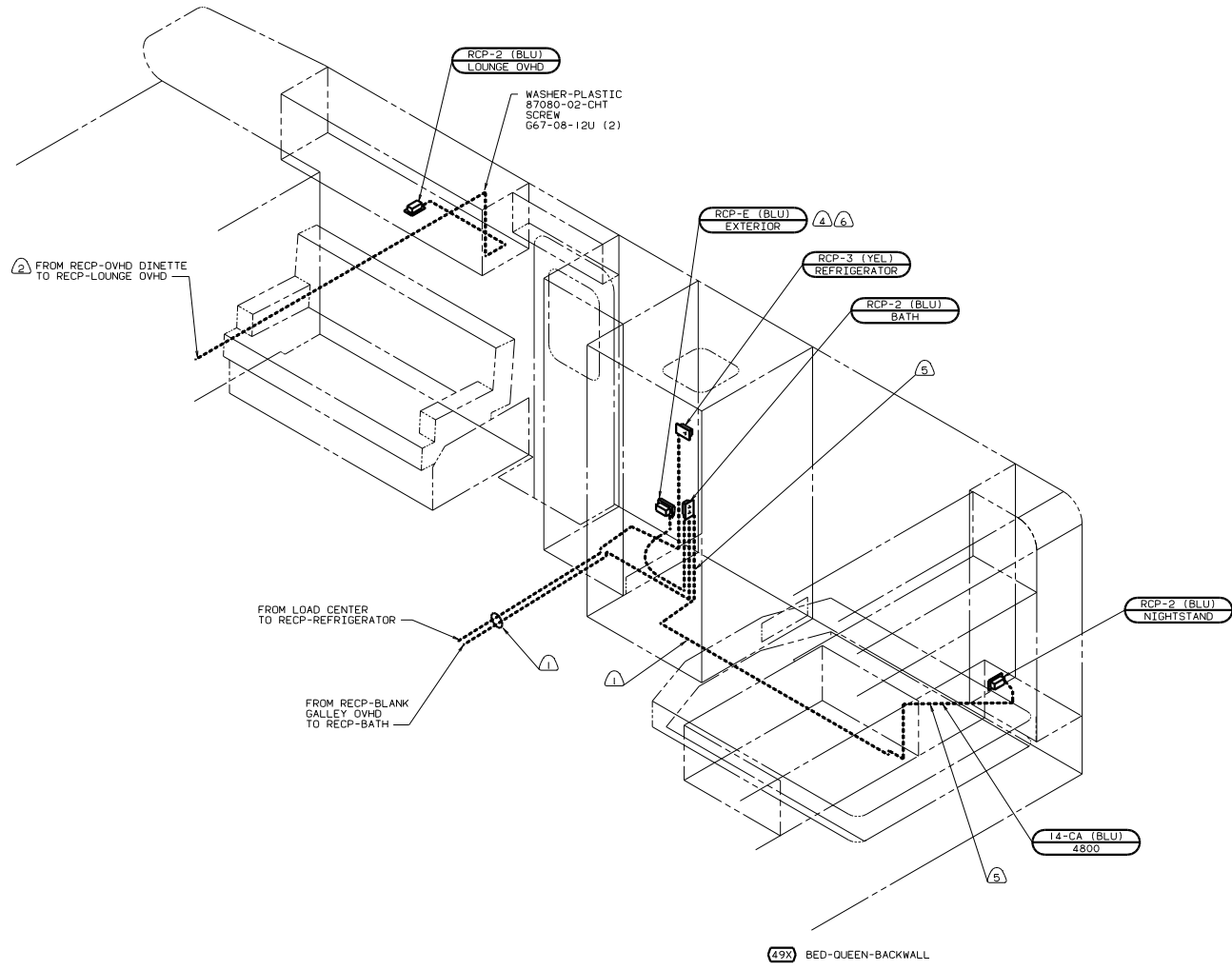
- ④50 BED-TWINS
- ④4V BED-DOUBLE-SIDEWALL
- ②65 CODES/STANDARDS-CSA/CMVSS
- ①B1 CODES STANDARDS/USA
- ①20 ELECTRICAL SYSTEM 30 AMP

99 329N ①B1 ②65 ①20

WIRING INSTL-BODY(110 BDRM)  
 SHEET 3 OF 12







- 7. SEE SHT 3 FOR TWIN, BUNK AND DOUBLE BEDS.
- Ⓐ NOT USED WITH 76C
- Ⓔ ADD CONDUIT 41953-01-000 IN THIS AREA.
- Ⓐ SEE ENT CTR INSTL-EXT FOR ADDITIONAL INFORMATION.
- Ⓒ SEAL BACK SIDE OF RECP FACE.
- Ⓔ WIRE ROUTED IN ROOF.
- Ⓐ WIRE ROUTED THRU FLOOR.

NOTES:

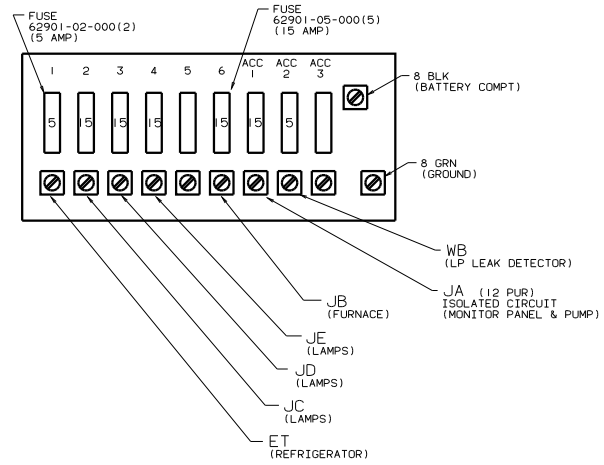
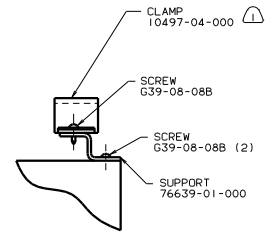
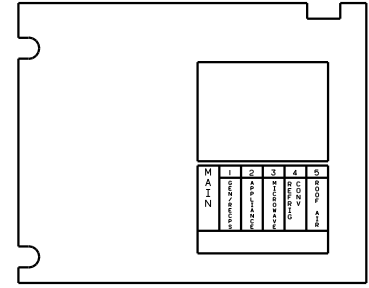
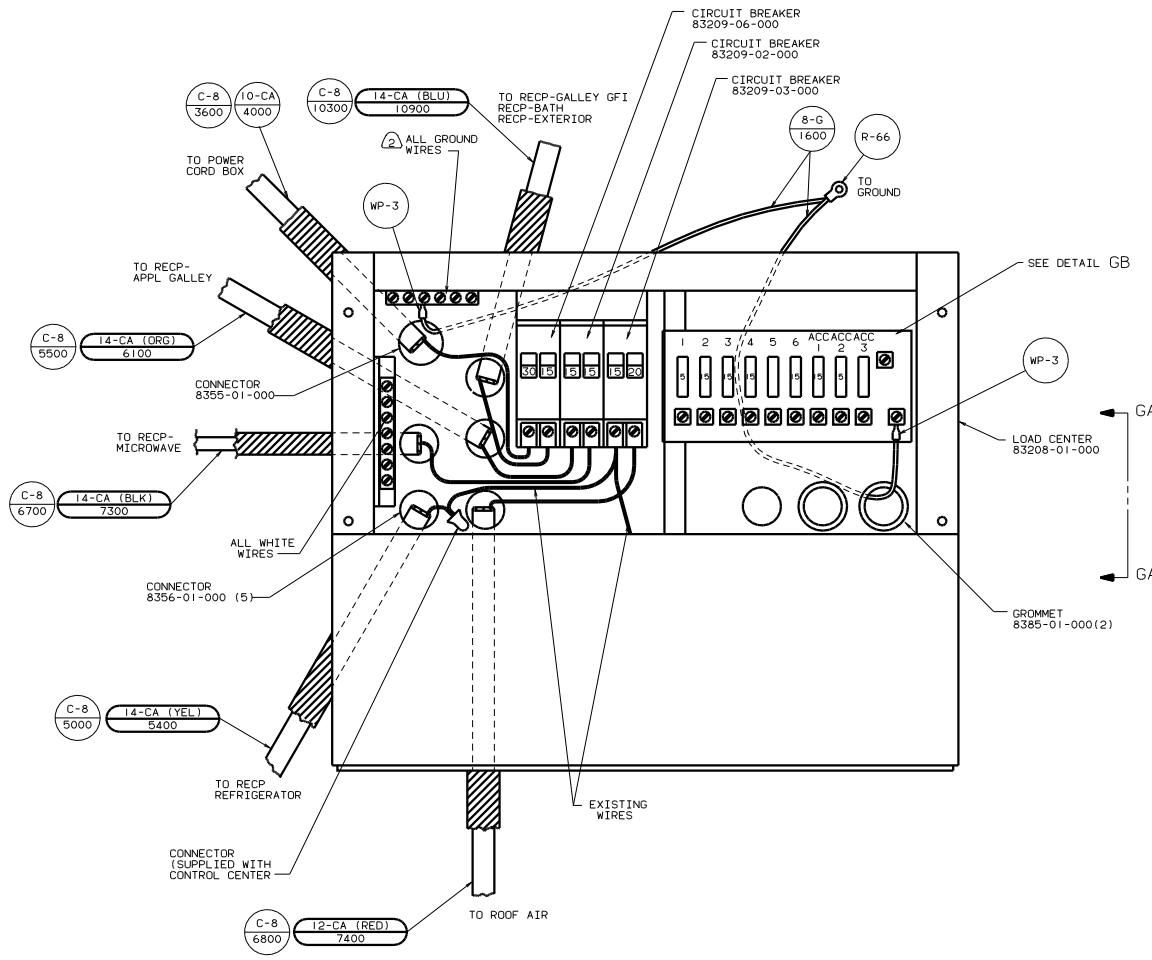
- 76C ENTERTAINMENT CTR/EXT CSETTE
- 49X BED-QUEEN-BACKWALL
- 265 CODES/STANDARDS-CSA/CMVSS
- 120 ELECTRICAL SYSTEM 30 AMP

99 329N 265 120  
 TITLE: WIRING INSTL-BODY(110R30CSA)  
 SHEET 6 OF 12

FOR ELECTRICAL TORQUE SPECIFICATIONS SEE DWG NO. 128783-01-000

FOR ELECTRICAL CALLOUTS SEE DWG NO. 121339-01-000





2 ALL GROUND WIRES TO BE COVERED WITH TUBING 8041-02-000.  
 1 FASTEN ALL WIRES TO SUPPORT. USE ONE SCREW PER CLAMP.

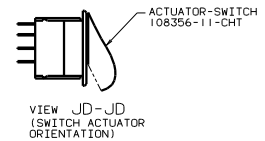
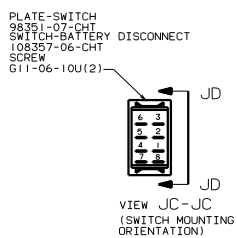
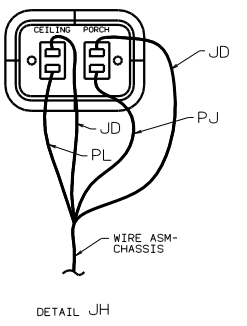
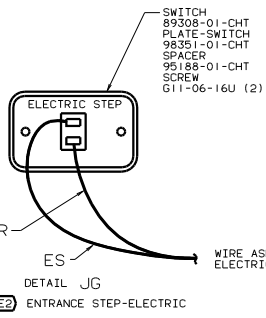
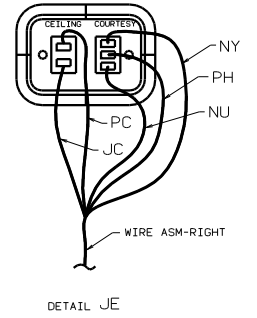
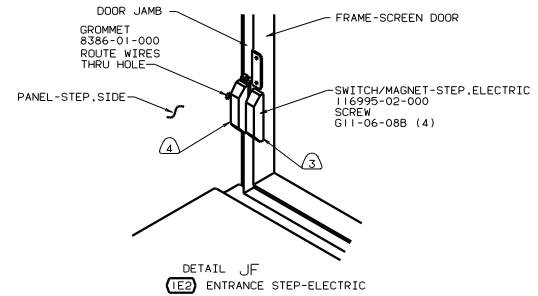
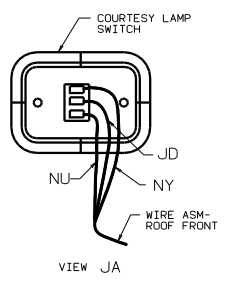
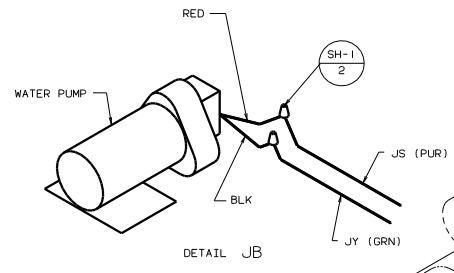
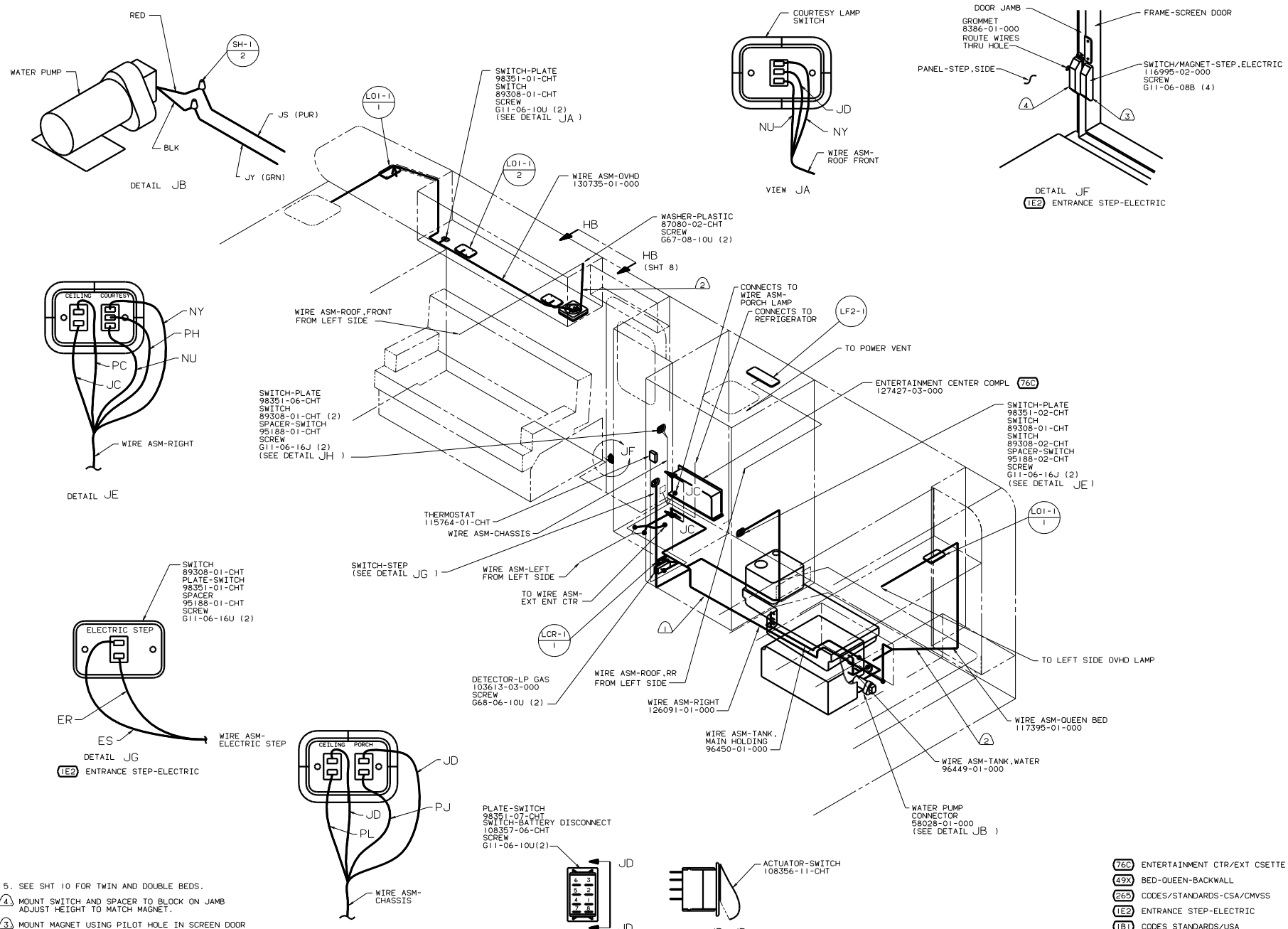
FOR ELECTRICAL TORQUE SPECIFICATIONS SEE DWG NO 128783-01-000

X-X FOR ELECTRICAL CALLOUTS SEE DWG NO 121339-01-000

265 CODES/STANDARDS-CSA/CMVSS  
 120 ELECTRICAL SYSTEM 30 AMP  
 99 329N 265 120  
 TITLE: WIRING INSTL-BODY(30 CC CSA)  
 SHEET 7 OF 12 DWG NO 130723







5. SEE SHT 10 FOR TWIN AND DOUBLE BEDS.
- ④ MOUNT SWITCH AND SPACER TO BLOCK ON JAMB ADJUST HEIGHT TO MATCH MAGNET.
- ③ MOUNT MAGNET USING PILOT HOLE IN SCREEN DOOR FRAME. MOUNT WITH MAGNET TOWARD SWITCH.
- ② COVER WITH CONDUIT 41953-01-000 IN THIS AREA.
- ① WIRE ROUTED THRU FLOOR.

- ⑦65 ENTERTAINMENT CTR/EXT CSETTE
- ④9X BED-QUEEN-BACKWALL
- ②65 CODES/STANDARDS-CSA/CMVSS
- ①E2 ENTRANCE STEP-ELECTRIC
- ①B1 CODES STANDARDS/USA

FOR ELECTRICAL TORQUE SPECIFICATIONS SEE DWG NO. 128783-01-000

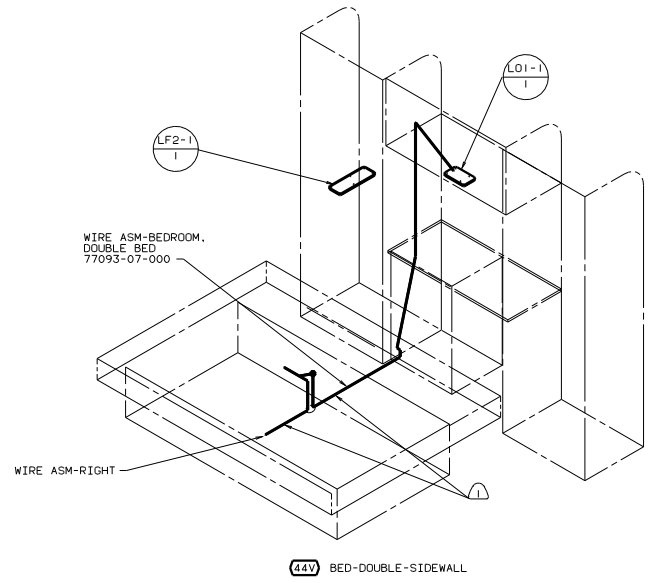
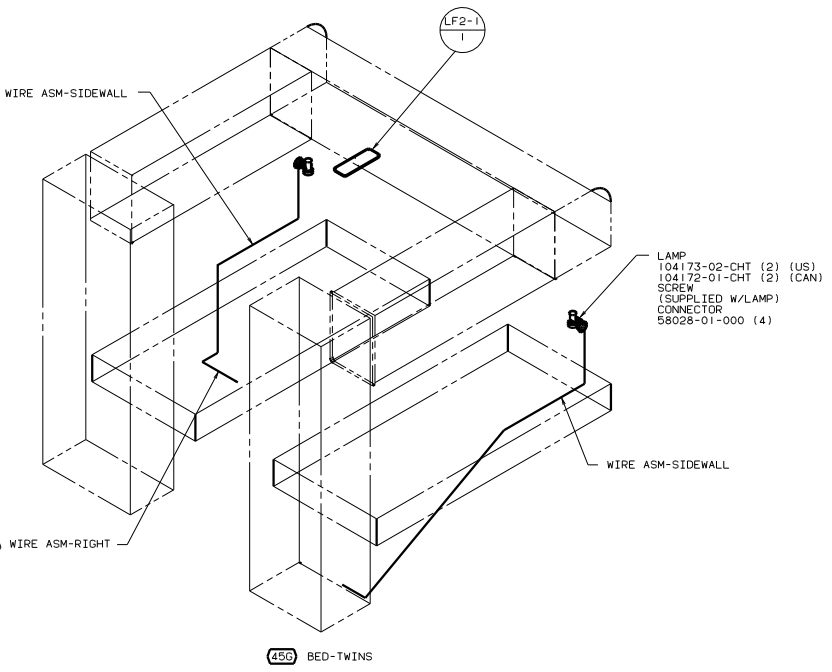
FOR ELECTRICAL CALL OUTS SEE DWG NO. 121339-01-000

99 329N (1B1) (265)

TITLE: WIRING INSTL-BODY(12\_R)

SHEET 9 OF 12

DWG NO 130723



NOTES:  
1 WIRE ROUTED IN FLOOR.

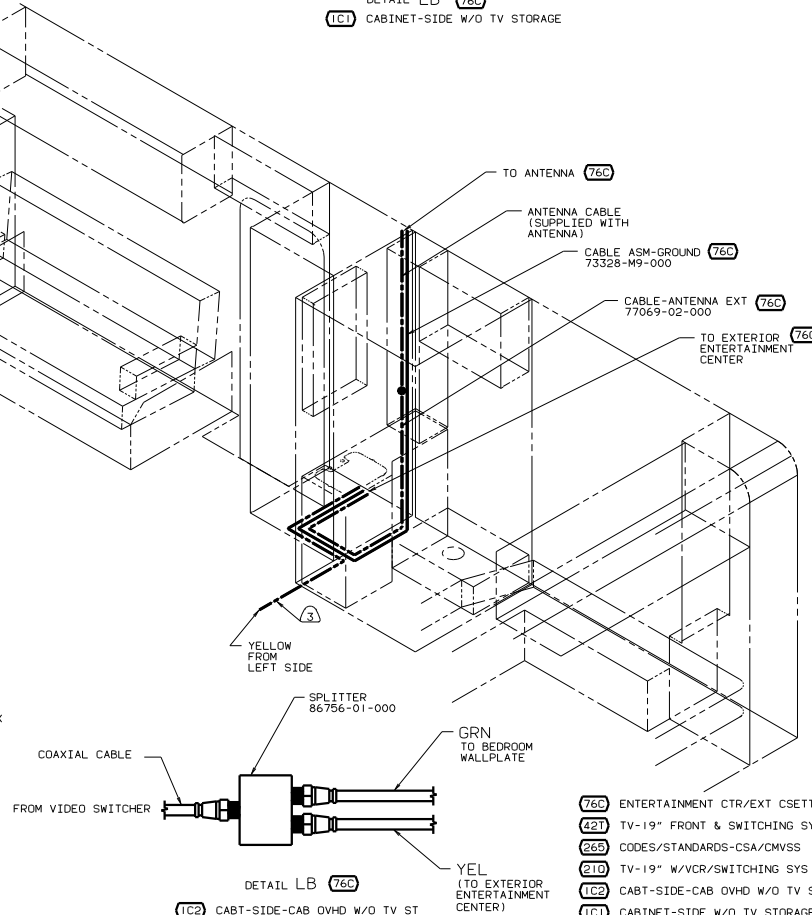
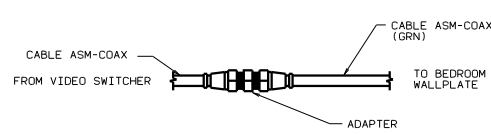
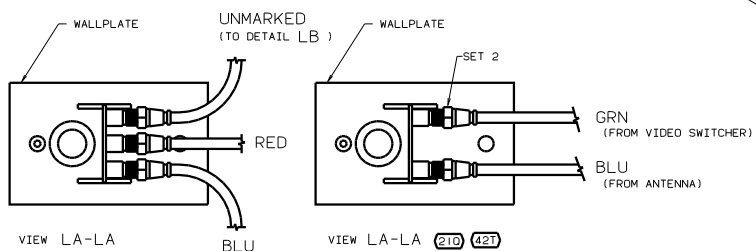
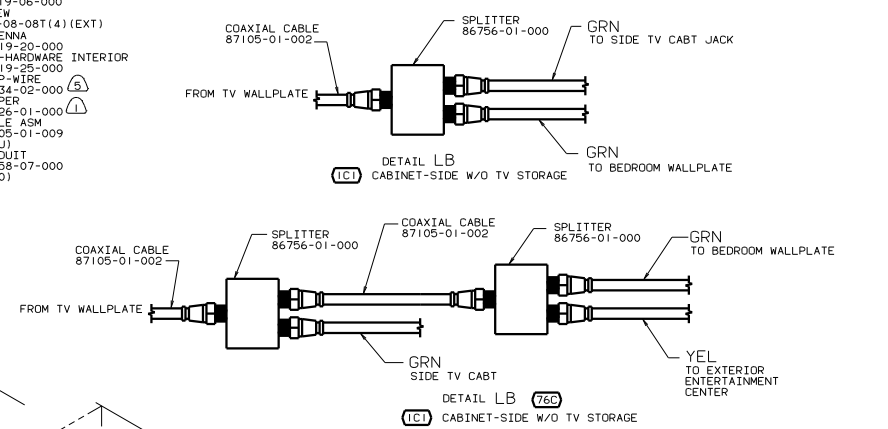
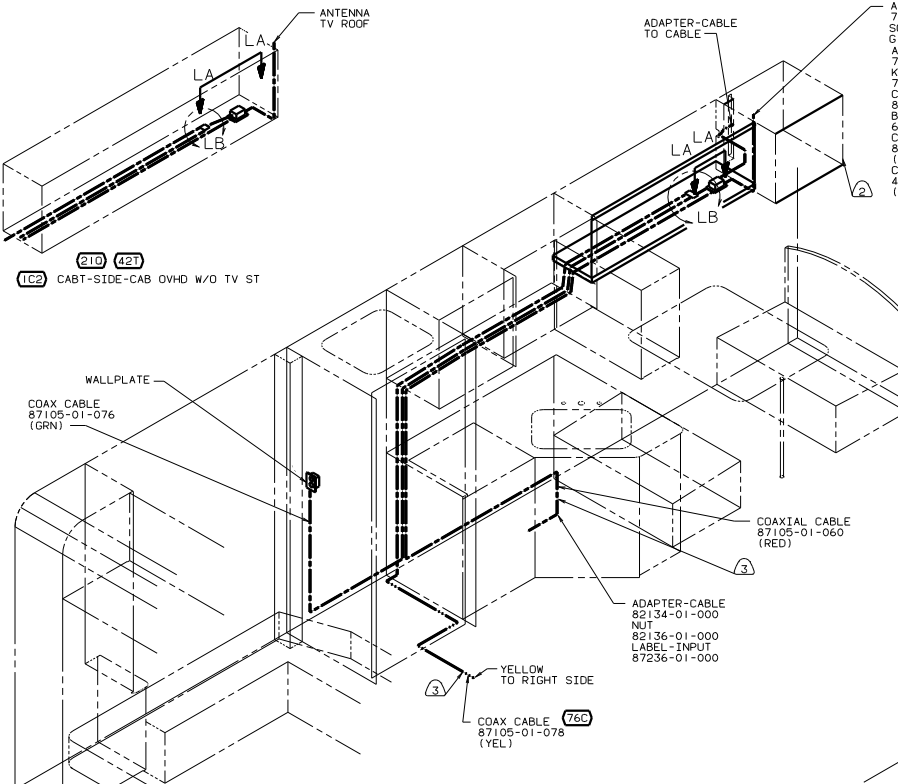
FOR ELECTRICAL  
TORQUE  
SPECIFICATIONS  
SEE DWG NO.  
128783-01-000

FOR  
ELECTRICAL  
CALLOUTS  
SEE DWG NO.  
121339-01-000

45G BED-TWINS  
44V BED-DOUBLE-SIDEWALL  
265 CODES/STANDARDS-CSA/CMVSS  
1B1 CODES STANDARDS/USA

99 329N 1B1 265

TITLE: WIRING INSTL-BODY(L2 BDRM)  
DWG NO: 130723  
SHEET 10 OF 12



- ⑥ SEE WIRING INSTL-TV/VCR,FRONT FOR ADDITIONAL INFORMATION.
- ⑤ LOCATE TO RETAIN CABLE BUT NOT TO RESTRICT ANTENNA TRAVEL.
- ④ SEE DRAWING 76319-01-000 FOR INSTALLATION OF TV ANTENNA.
- ③ ROUTED THROUGH FLOOR, ADD CONDUIT 41953-07-000 600 BELOW FLOOR
- ② SEE WIRING INSTL-TV/VCR,SIDE FOR ADDITIONAL INFORMATION.
- ① ADD RUBBER BUMPER TO ROOF UNDER EACH END OF ANTENNA IN DOWN POSITION WHICH MAY COME INTO CONTACT WITH ROOF.

- 76C ENTERTAINMENT CTR/EXT CSETTE
- 421 TV-19" FRONT & SWITCHING SYS
- 265 CODES/STANDARDS-CSA/CMVSS
- 210 TV-19" W/VCR/SWITCHING SYS
- IC2 CABT-SIDE-CAB OVHD W/O TV ST
- IC1 CABINET-SIDE W/O TV STORAGE
- 1B1 CODES STANDARDS/USA

FOR ELECTRICAL TORQUE SPECIFICATIONS SEE DWG NO. 128783-01-000

(X-X)

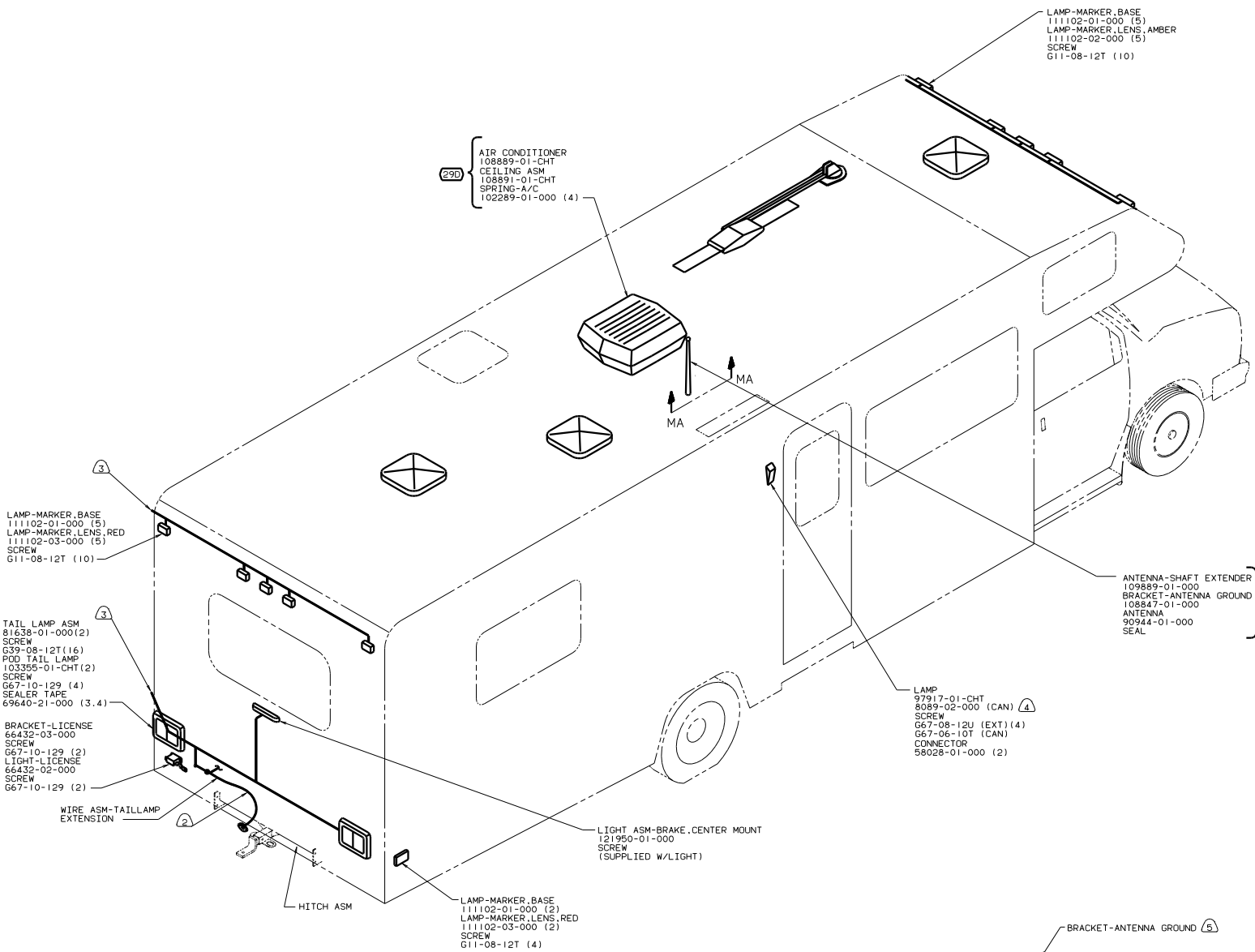
FOR ELECTRICAL CALLOUTS SEE DWG NO. 121339-01-000

99 329N (1B1) (265)

TITLE: WIRING INSTL-BODY(COAX)

NO. OF SHEETS: 11 OF 12

DWG NO. 130723



- 5 WRAP BRACKET LEGS AROUND ANTENNA BASE.
  - 4 INSTALL WITH WIRES TOWARD ROOF.
  - 3 CONNECT TO WIRE ASM-SIDEWALL WITH CONNECTOR 58028-01-000 (2)
  - 2 SECURE WIRE BELOW COACH WITH CLAMP 10495-01-000 AND SCREW G67-10-129.
1. CONNECTOR-PLUG, TRAILER 113589-01-000 TO BE SUPPLIED LOOSE IN COACH WITH TRAILER TOW PACKAGE.

NOTES:

76C ENTERTAINMENT CTR/EXT CSETTE  
 265 CODES/STANDARDS-CSA/CWVSS  
 1B1 CODES STANDARDS/USA  
 99 329N 1B1 265

TITLE: WIRING INSTL-BODY(EX L)	
NO. OF SHEETS	TOT. SHEETS
12 OF 12	12
130723	