



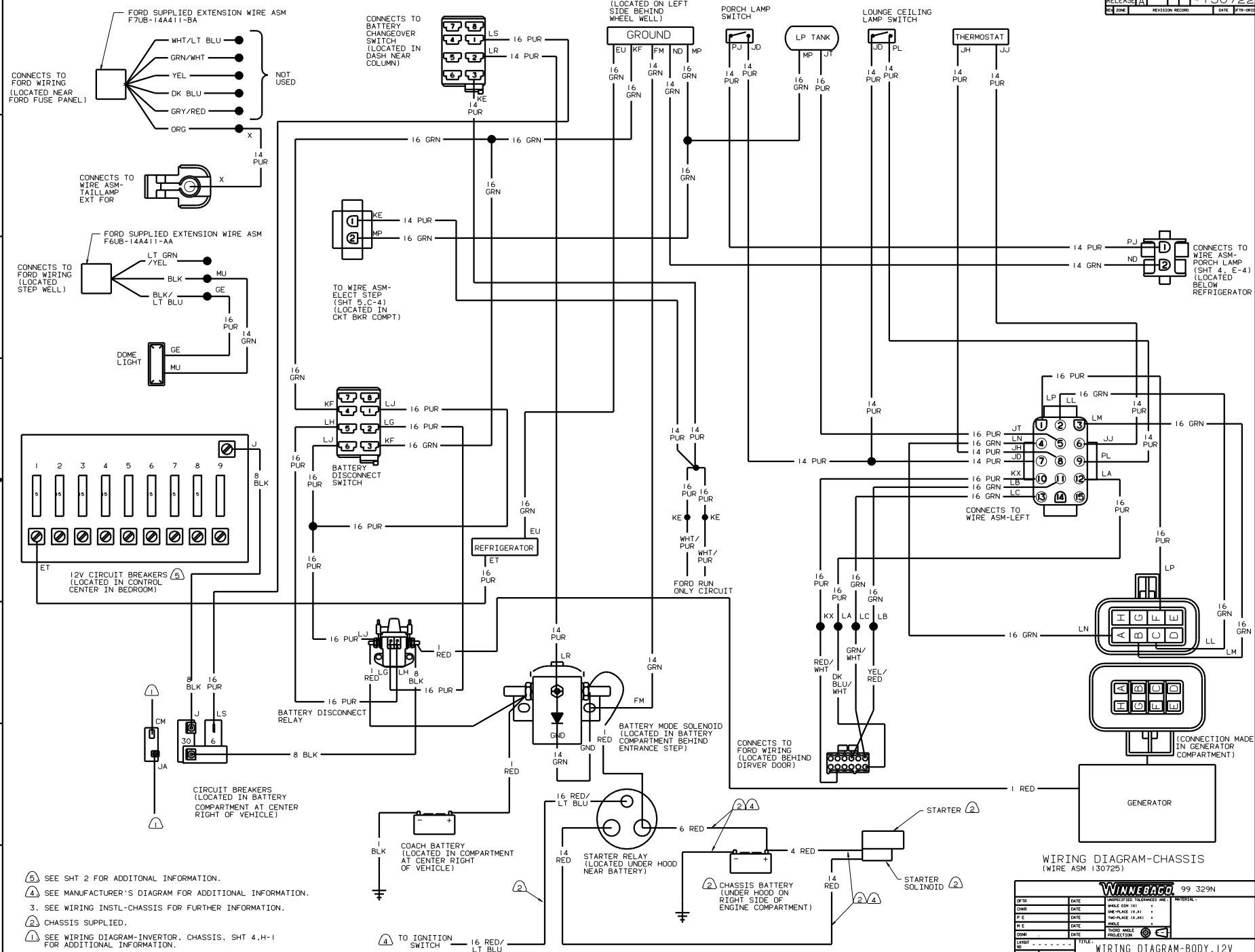
**DANGER**

**Danger of electrical shock, burns or death.** Always remove all power sources before attempting any repair, service or diagnostic work. Power can be present from shore power, generator, inverter or battery. All power sources must be disabled and secured before performing any service.



**CAUTION**

If you lack the skills, tools or equipment to perform diagnostic or repair work leave such work to an authorized Winnebago Industries dealer or other qualified shop.



- NOTES:
- ③ SEE SHT 2 FOR ADDITIONAL INFORMATION.
  - ④ SEE MANUFACTURER'S DIAGRAM FOR ADDITIONAL INFORMATION.
  - 3. SEE WIRING INSTL-CHASSIS FOR FURTHER INFORMATION.
  - ② CHASSIS SUPPLIED.
  - ① SEE WIRING DIAGRAM-INVERTOR, CHASSIS, SHT 4.H-1 FOR ADDITIONAL INFORMATION.

**WINNEBAGO** 99 329N

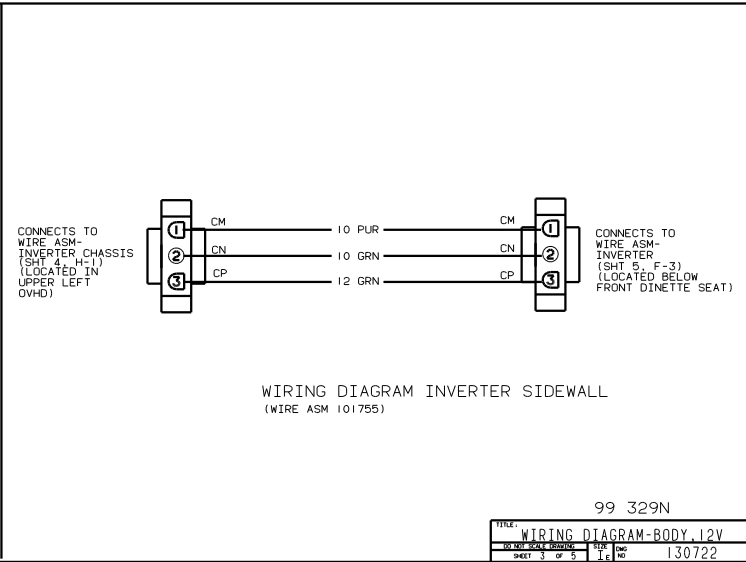
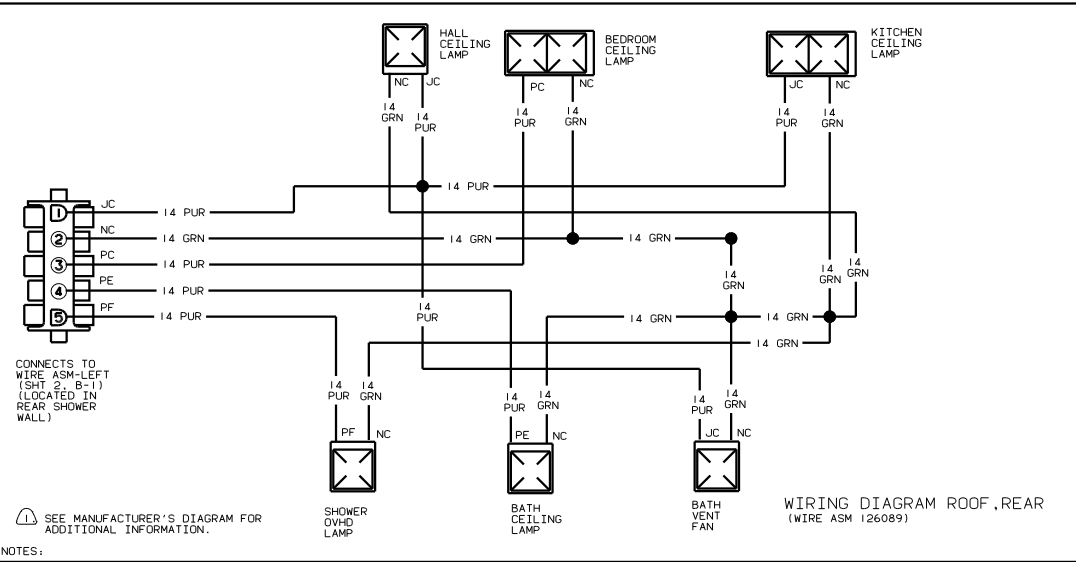
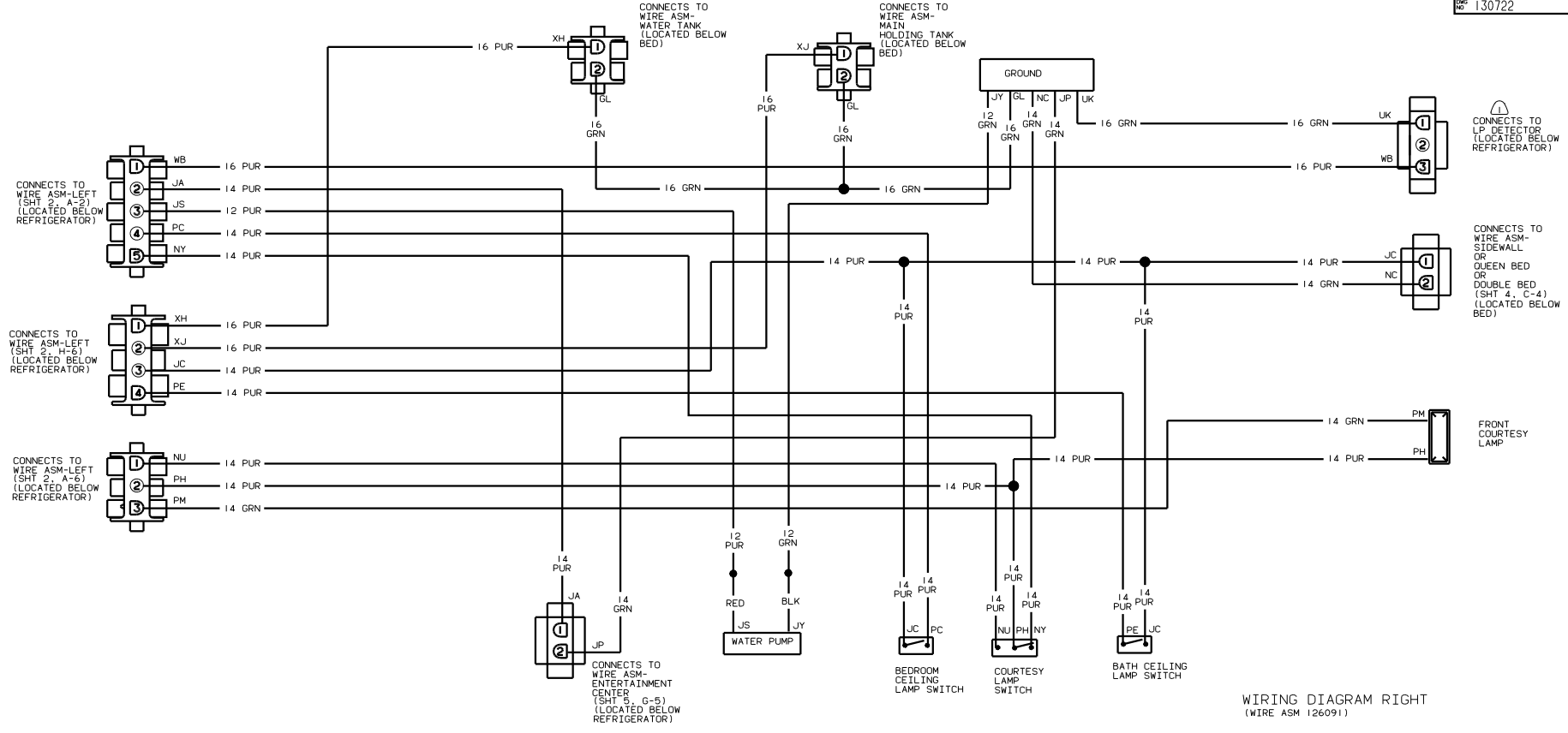
**WIRING DIAGRAM-CHASSIS**  
(WIRE ASM 130725)

DATE	DESCRIPTION	BY	CHKD

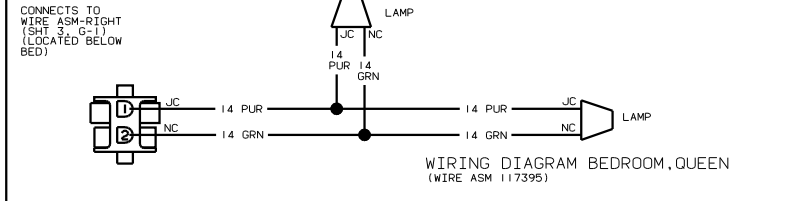
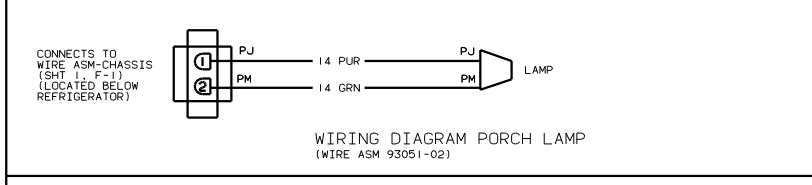
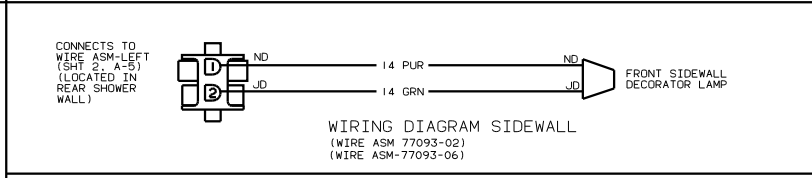
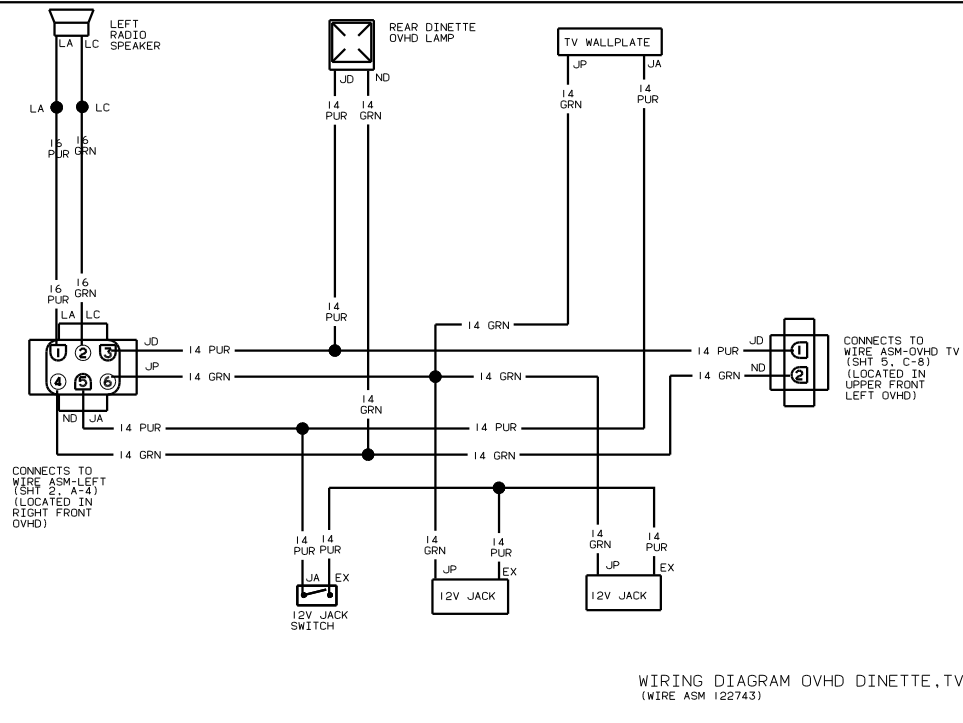
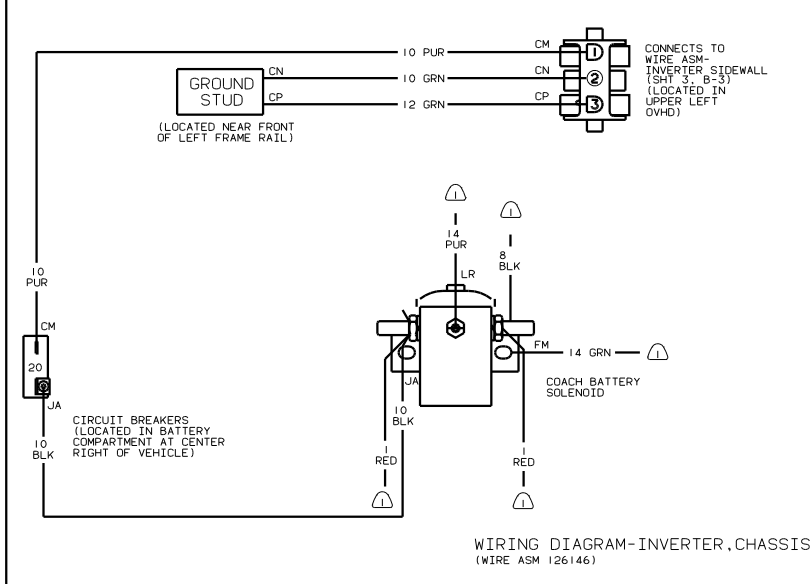
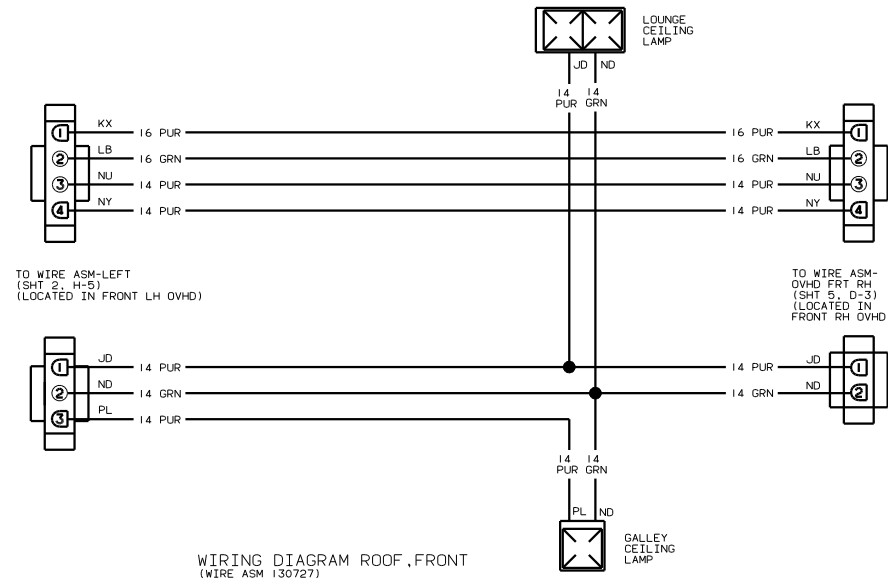
**WIRING DIAGRAM-BODY 12V**

SHEET 1 OF 5

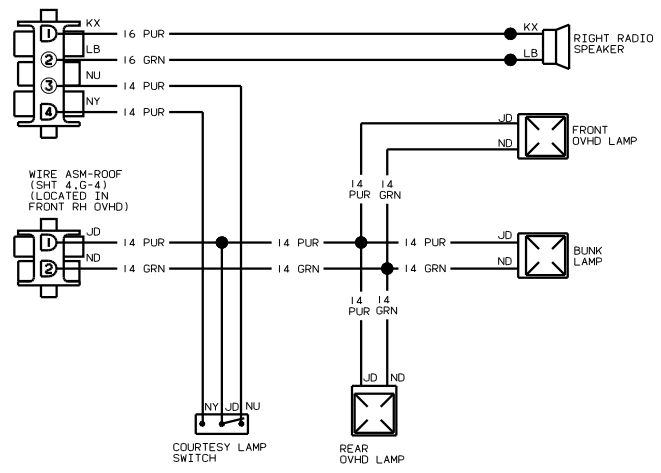
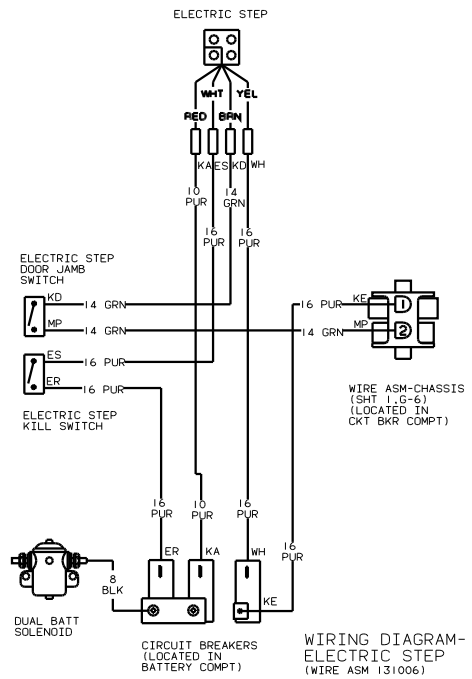
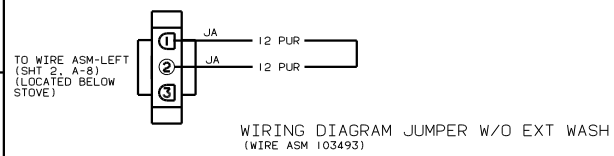
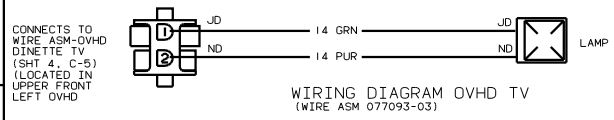
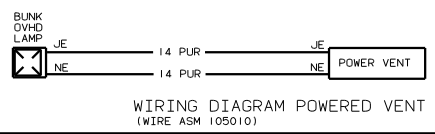
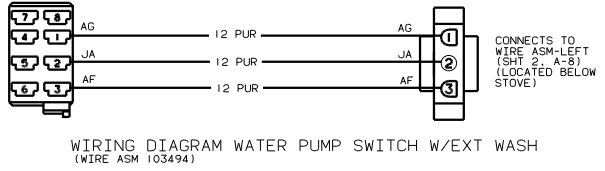
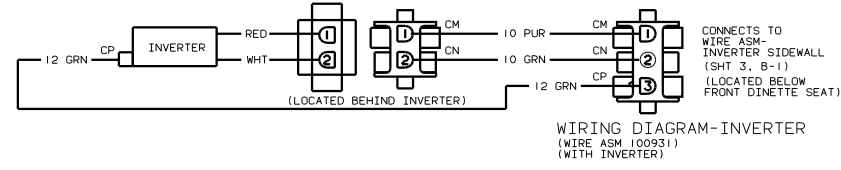
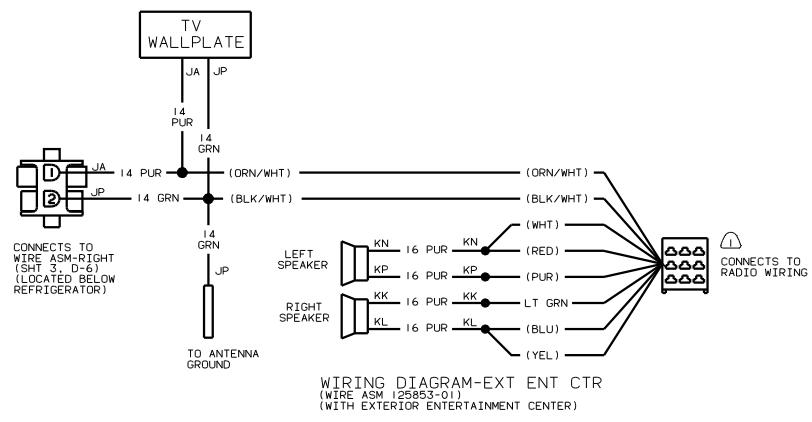
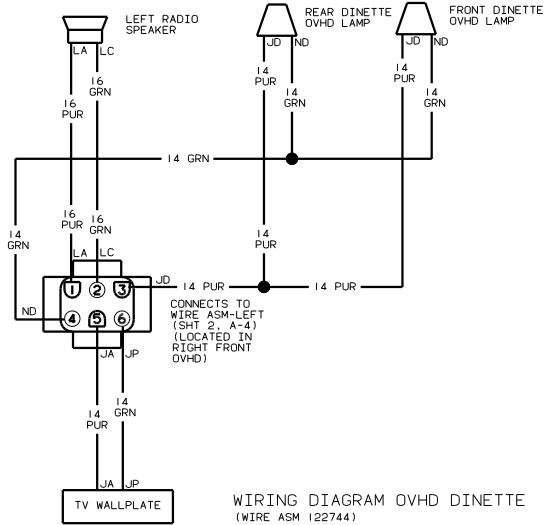




NOTES:  
 1 SEE MANUFACTURER'S DIAGRAM FOR ADDITIONAL INFORMATION.



NOTES: SEE WIRING DIAGRAM-CHASSIS, SHT 1, C-5 FOR ADDITIONAL INFORMATION.



1) SEE MANUFACTURER'S DIAGRAM FOR ADDITIONAL INFORMATION.

NOTES: