



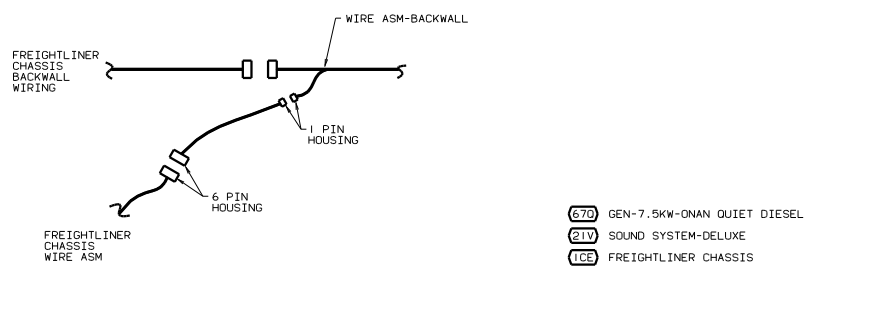
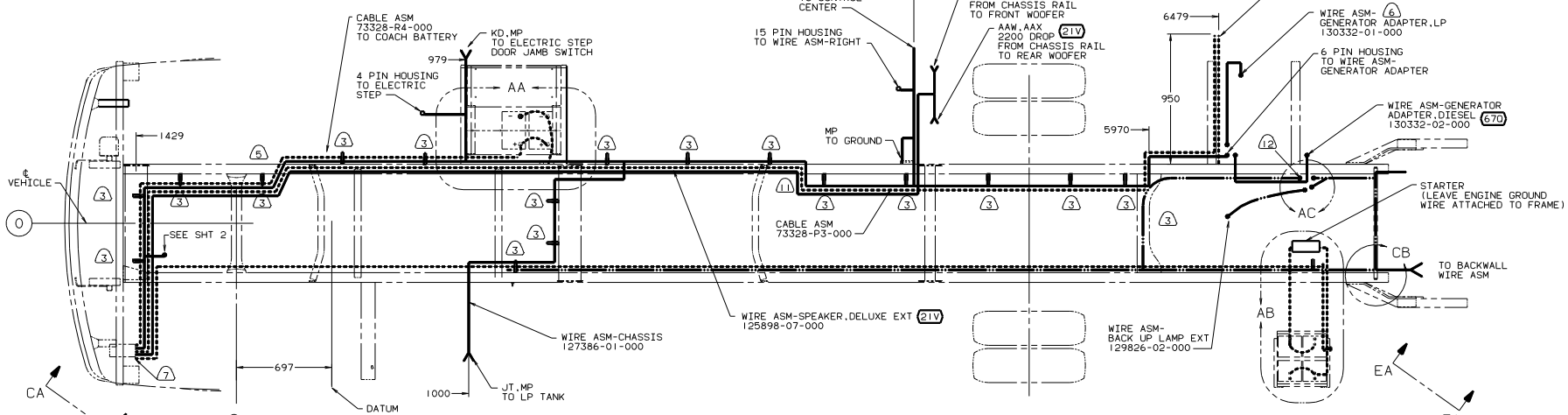
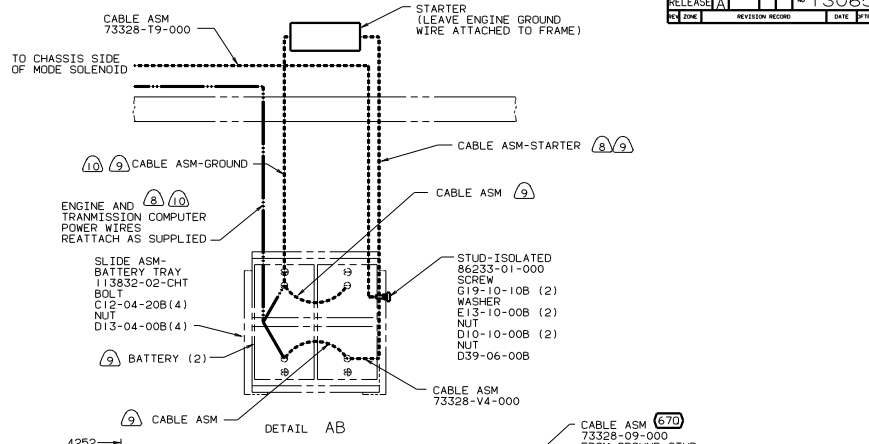
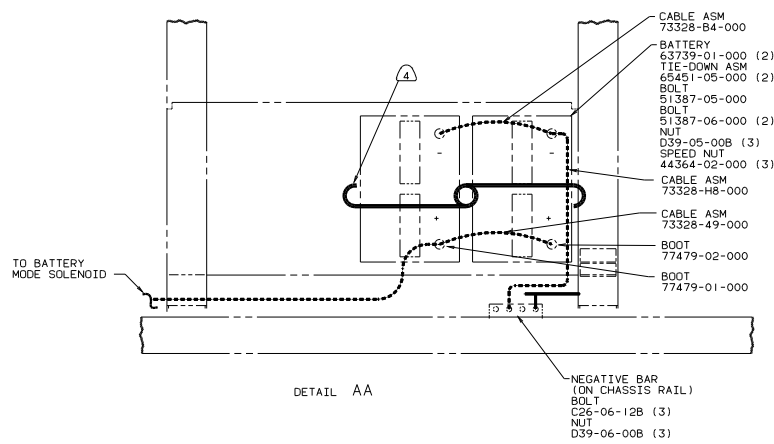
**DANGER**

**Danger of electrical shock, burns or death.** Always remove all power sources before attempting any repair, service or diagnostic work. Power can be present from shore power, generator, inverter or battery. All power sources must be disabled and secured before performing any service.



**CAUTION**

If you lack the skills, tools or equipment to perform diagnostic or repair work leave such work to an authorized Winnebago Industries dealer or other qualified shop.



- (2) REMOVE 6 POSITION WEATHER PACK HOUSING SUPPLIED W/CHASSIS & SEND TO WIRE PREP
- (1) ROUTE WIRES & CABLE INSIDE CHASSIS RAIL AT THIS POINT & TO THE REAR.
- (10) USE AS SUPPLIED
- (9) SUPPLIED WITH CHASSIS.
- (8) COIL UP EXCESS CABLE AND TIE WITH 8343-02-000.
- (7) SEE WIRING INSTL-FRONT END FOR ADDITIONAL INFORMATION.
- (6) USE WITH LP GENERATOR.
- (5) ROUTE CABLES THRU CHASSIS RAIL IN THIS AREA. FOLLOW INSIDE RAIL TO FRONT.
- (4) USE TWO NUTS HERE TO ACCOUNT FOR BATTERY HEIGHT DIFFERENCE.
- (3) USE WIRE TIE 8343-02-000 OR 8343-03-000 AS REQUIRED.

2. SECURE CONDUIT 41953-09-000, 41953-10-000 AND 41953-11-000 OVER ALL WIRES IN CONTACT WITH SHARP EDGES.

1. LEGEND: — WINNEBAGO, - - - - - CABLE, . . . . . CHASSIS SUPPLIED.

- (670) GEN-7.5KW-ONAN QUIET DIESEL
- (21V) SOUND SYSTEM-DELUXE
- (ICE) FREIGHTLINER CHASSIS

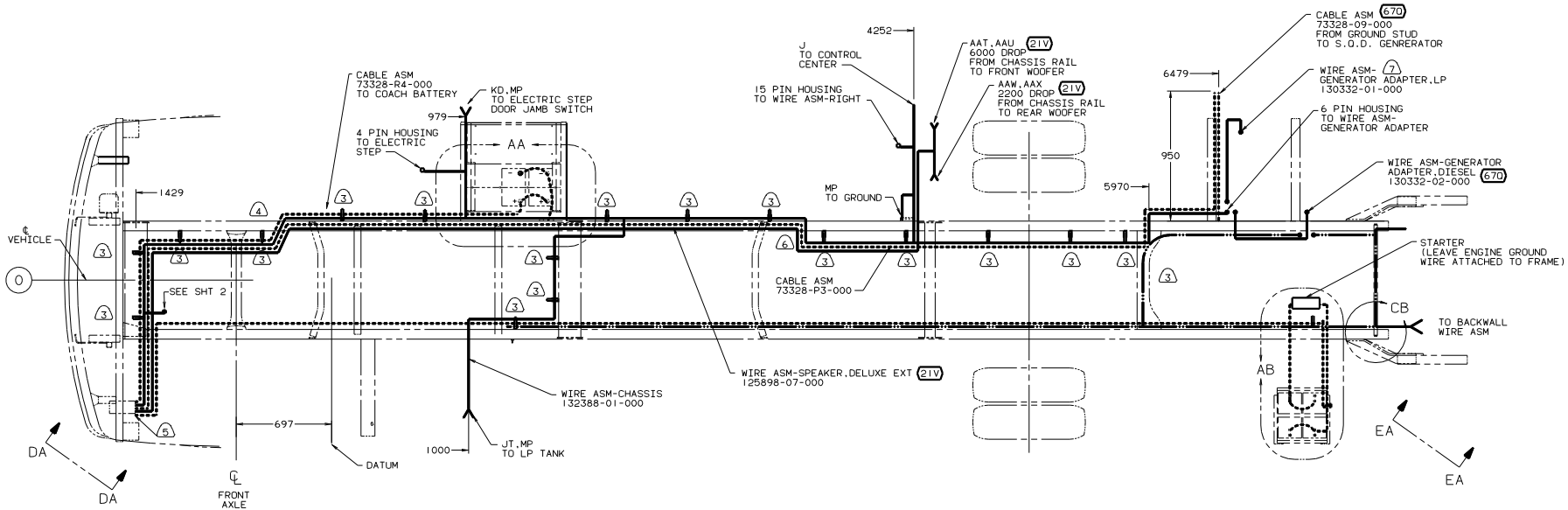
FOR ELECTRICAL TORQUE SPECIFICATIONS SEE DWG NO. 128783-01-000

DATE		UNSPECIFIED TOLERANCES ARE:		MATERIAL	
QTY IN	DATE	FRONT VIEW	1:1	FRONT VIEW	1:1
CHP	DATE	ONE-PLACE (1:1)	1:1	ONE-PLACE (1:1)	1:1
DATE	DATE	TWO-PLACE (1:1)	1:1	TWO-PLACE (1:1)	1:1
DATE	DATE	THREE-PLACE (1:1)	1:1	THREE-PLACE (1:1)	1:1
DATE	DATE	FOUR-PLACE (1:1)	1:1	FOUR-PLACE (1:1)	1:1
DATE	DATE	FIVE-PLACE (1:1)	1:1	FIVE-PLACE (1:1)	1:1
DATE	DATE	SIX-PLACE (1:1)	1:1	SIX-PLACE (1:1)	1:1
DATE	DATE	SEVEN-PLACE (1:1)	1:1	SEVEN-PLACE (1:1)	1:1
DATE	DATE	EIGHT-PLACE (1:1)	1:1	EIGHT-PLACE (1:1)	1:1
DATE	DATE	NINE-PLACE (1:1)	1:1	NINE-PLACE (1:1)	1:1
DATE	DATE	TEN-PLACE (1:1)	1:1	TEN-PLACE (1:1)	1:1
DATE	DATE	ELEVEN-PLACE (1:1)	1:1	ELEVEN-PLACE (1:1)	1:1
DATE	DATE	TWELVE-PLACE (1:1)	1:1	TWELVE-PLACE (1:1)	1:1

WINNEBAGO 99 G34V

127385-H

130659



- (7) USE WITH LP GENERATOR
- (6) ROUTE WIRES & CABLE INSIDE CHASSIS RAIL AT THIS POINT & TO THE REAR.
- (5) SEE WIRING INSTL-FRONT END FOR ADDITIONAL INFORMATION.
- (4) ROUTE CABLES THRU CHASSIS RAIL IN THIS AREA. FOLLOW INSIDE RAIL TO FRONT.
- (3) USE WIRE TIE 8343-02-000 OR 8343-03-000 AS REQUIRED.

2. SECURE CONDUIT 41953-09-000, 41953-10-000 AND 41953-11-000 OVER ALL WIRES IN CONTACT WITH SHARP EDGES.

1. LEGEND: — WINNEBAGO, - - - - - CABLE, . . . . . CHASSIS SUPPLIED.

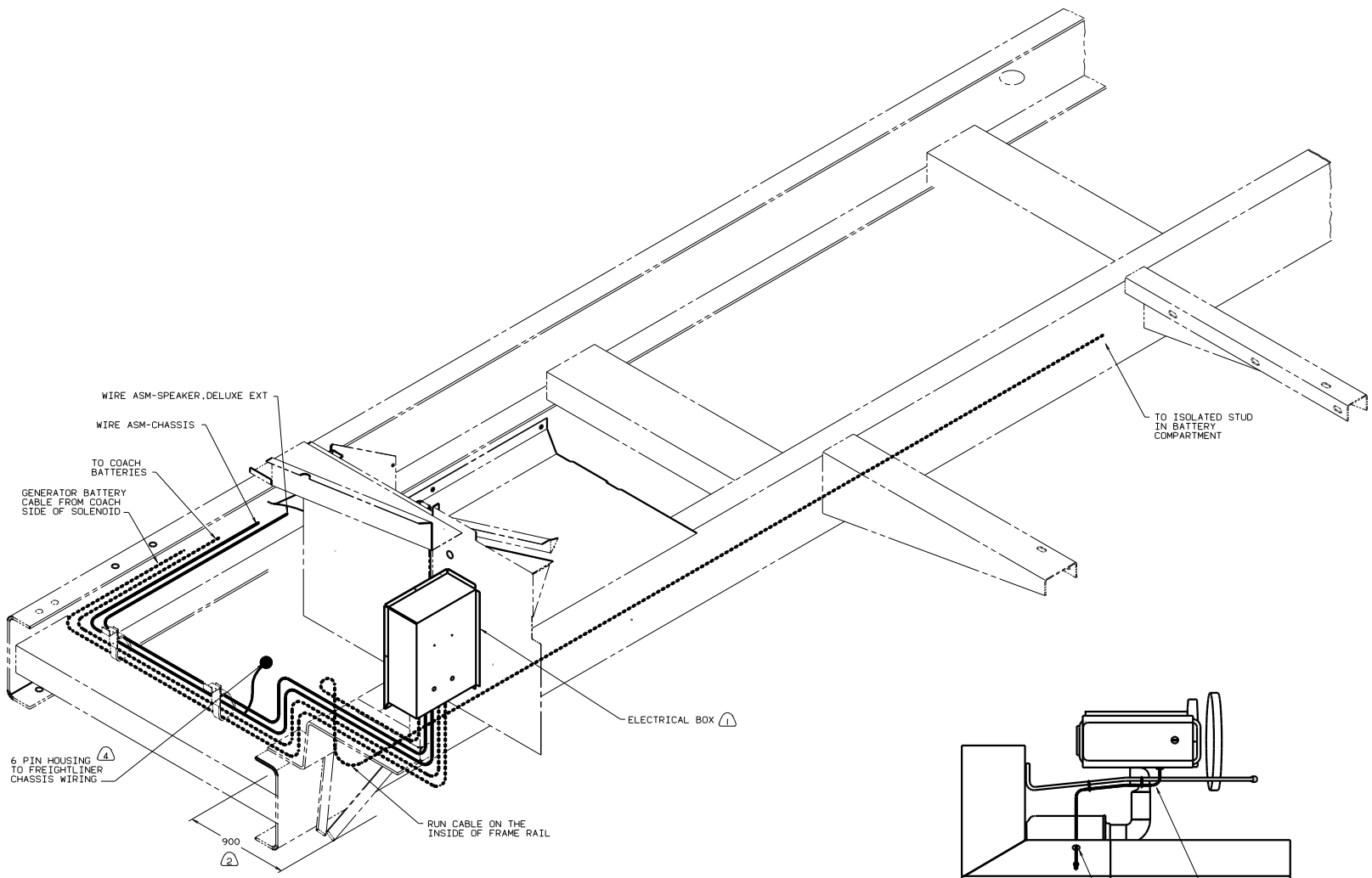
NOTES:

- (670) GEN-7.5KW-QNAN-QUIET DIESEL
- (21V) SOUND SYSTEM DELUXE
- (ICE) FREIGHTLINER CHASSIS

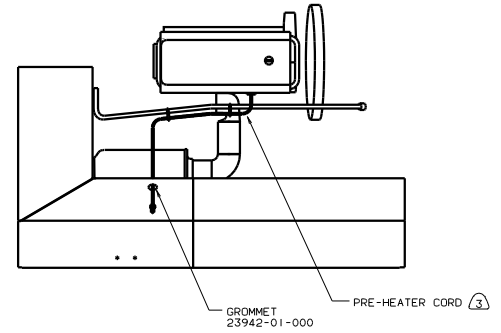
FOR ELECTRICAL TORQUE SPECIFICATIONS SEE DWG NO. 128783-01-000

99 1/2 G34V ONLY (ICE)

TITLE:	WIRING INSTL-CHASSIS
NO. OF SHEETS:	5
SHEET NO.:	2
REV. NO.:	1
REV. DATE:	11/83
DWG. NO.:	130659



VIEW CA-CA



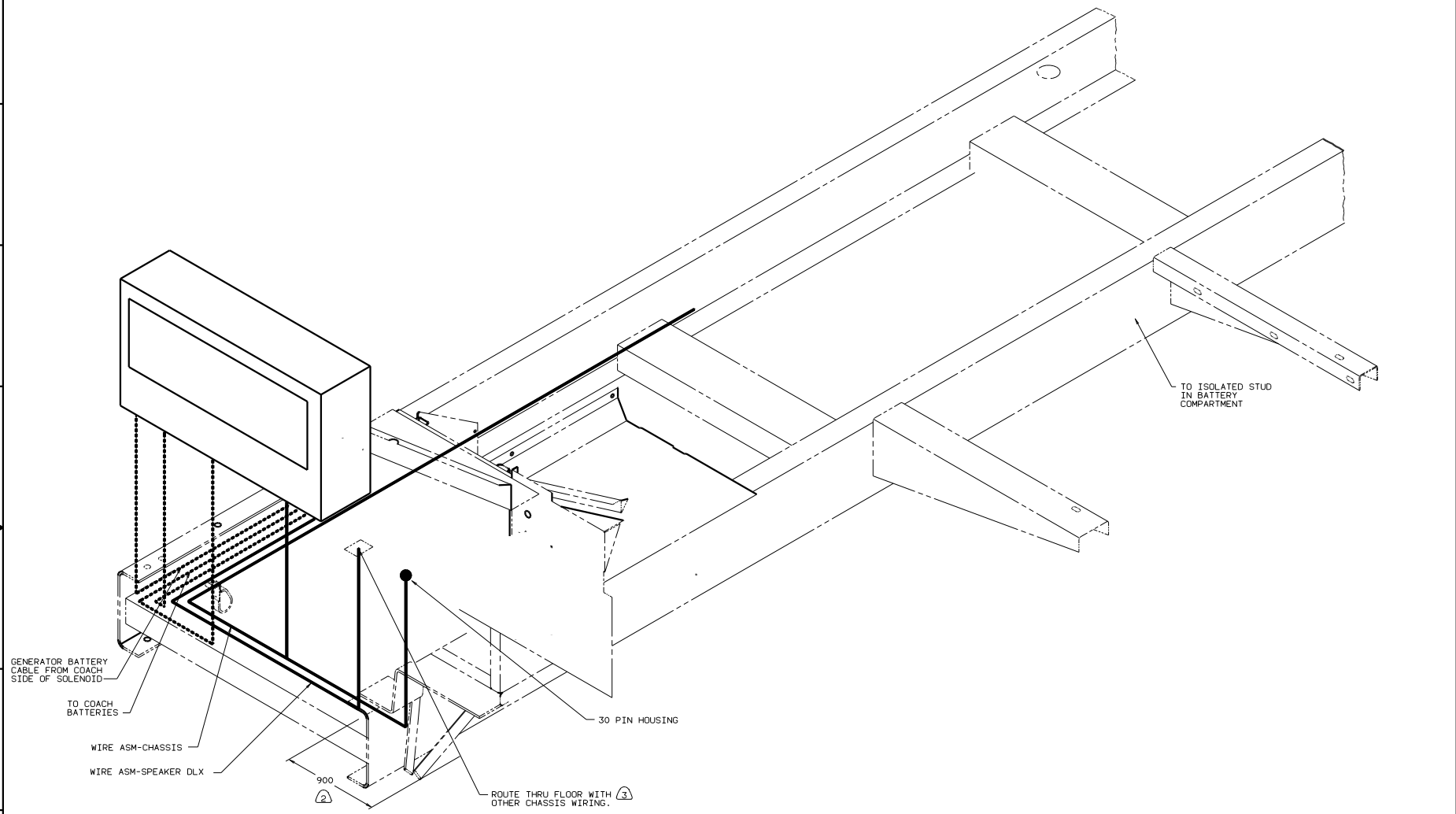
VIEW CB

⚠ WIRE TIE 8343-02. FASTEN TO FRAME AT LEAST ONCE EVERY 600MM.

FOR ELECTRICAL TORQUE SPECIFICATIONS SEE DMC NO 128783-01-000

99 G34V ONLY

TITLE: WIRING INSTL-CHASSIS SHEET 3 OF 5	DWG NO: 130659 I.E. NO:
---	----------------------------



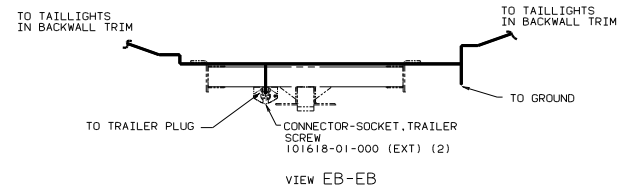
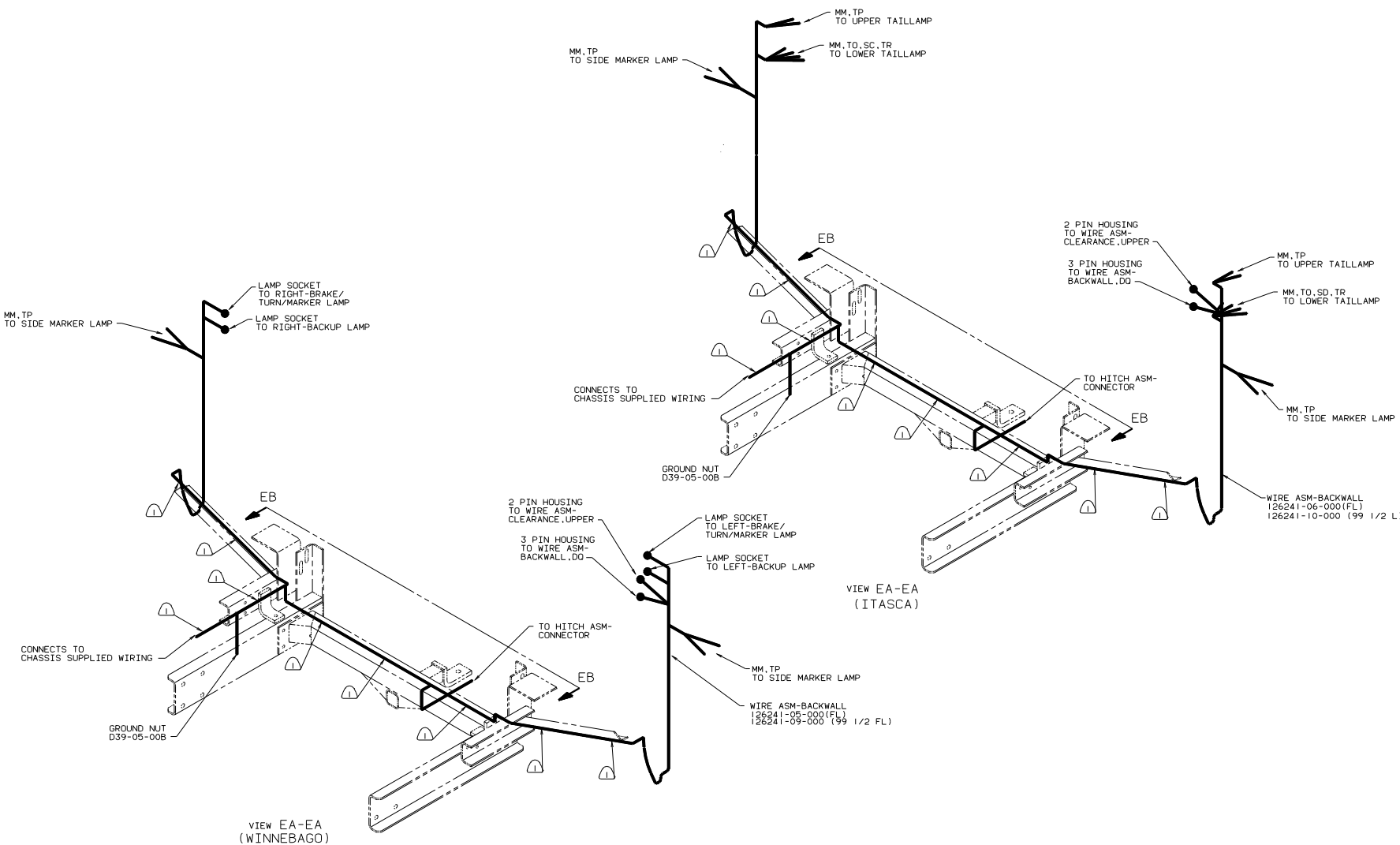
VIEW DA-DA

- ④ REMOVE 6 POSITION WEATHER PACK HOUSING SUPPLIED W/CHASSIS AND SEND TO WIRE PREP.
- ③ SECURE CORD AWAY FROM ALL MOVING PARTS AND EXHAUST WITH TIE-WIRE 93147-01-000 AS REQUIRED.
- ② LAY BATTERY AND GENERATOR CABLES TO THIS DIMENSION FROM MAIN CHASSIS RAIL TO START INSTALLATION.
- ① SEE WIRING INSTL-FRONT END FOR ADDITIONAL INFORMATION.

NOTES:

FOR ELECTRICAL TORQUE SPECIFICATIONS SEE DWG NO. 128783-01-000

99 1/2 G34V ONLY	
TITLE: WIRING INSTL-CHASSIS	
30 DAY SCALE DRAWING	1/16" = 1' (1/8" = 1')
SHEET 4 OF 5	DWG NO. 130659



⚠ WIRE TIE 8343-02. FASTEN TO FRAME AT LEAST ONCE EVERY 600MM.

NOTES:

FOR ELECTRICAL TORQUE SPECIFICATIONS SEE DWG NO 128783-01-000

99 & 99 1/2 G34V	
TITLE: WIRING INSTL-CHASSIS	
NO. OF SHEETS	TOTAL SHEETS
5 OF 5	5
130659	