



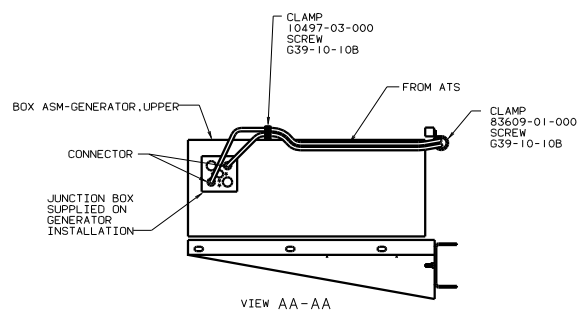
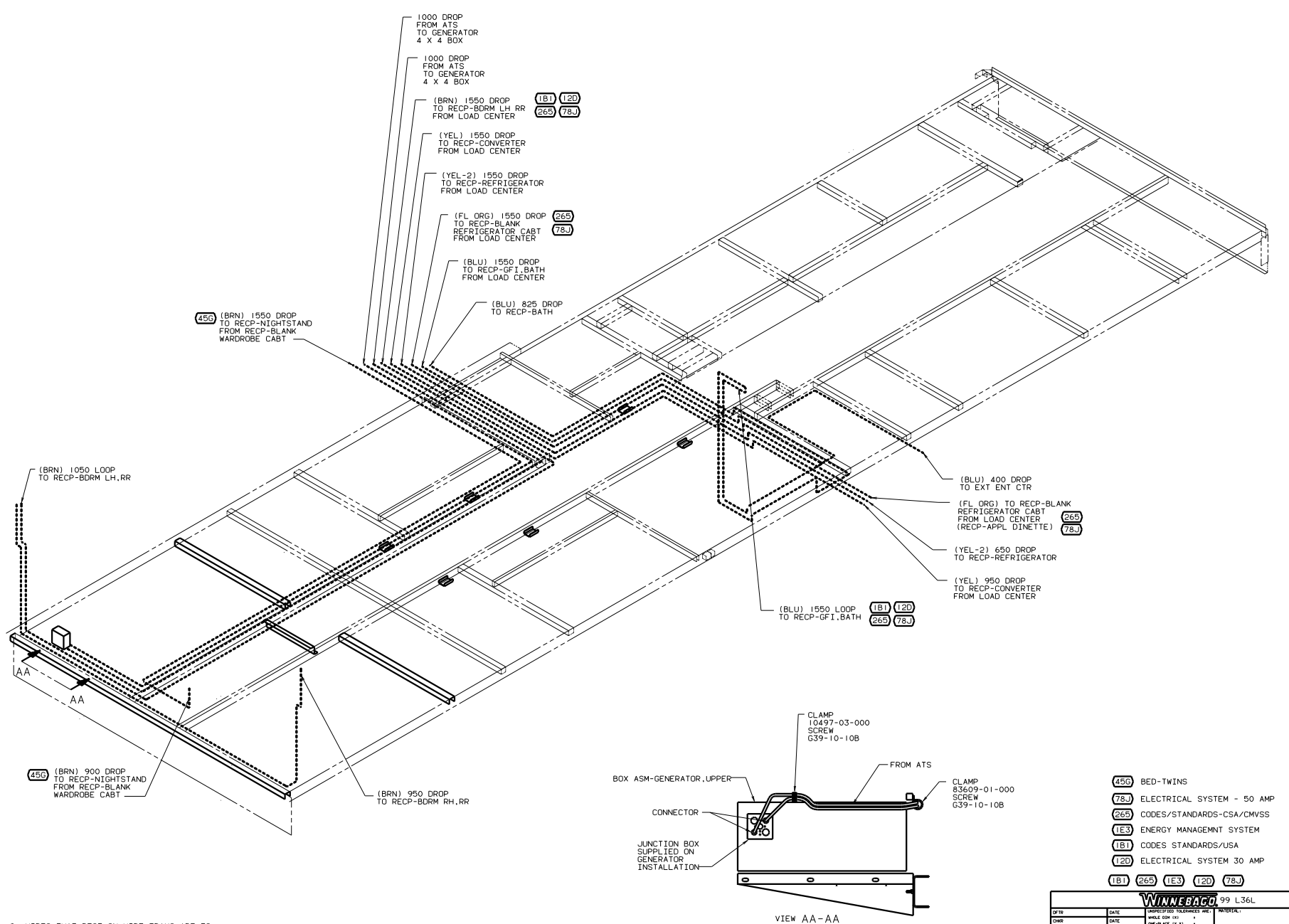
DANGER

Danger of electrical shock, burns or death. Always remove all power sources before attempting any repair, service or diagnostic work. Power can be present from shore power, generator, inverter or battery. All power sources must be disabled and secured before performing any service.



CAUTION

If you lack the skills, tools or equipment to perform diagnostic or repair work leave such work to an authorized Winnebago Industries dealer or other qualified shop.



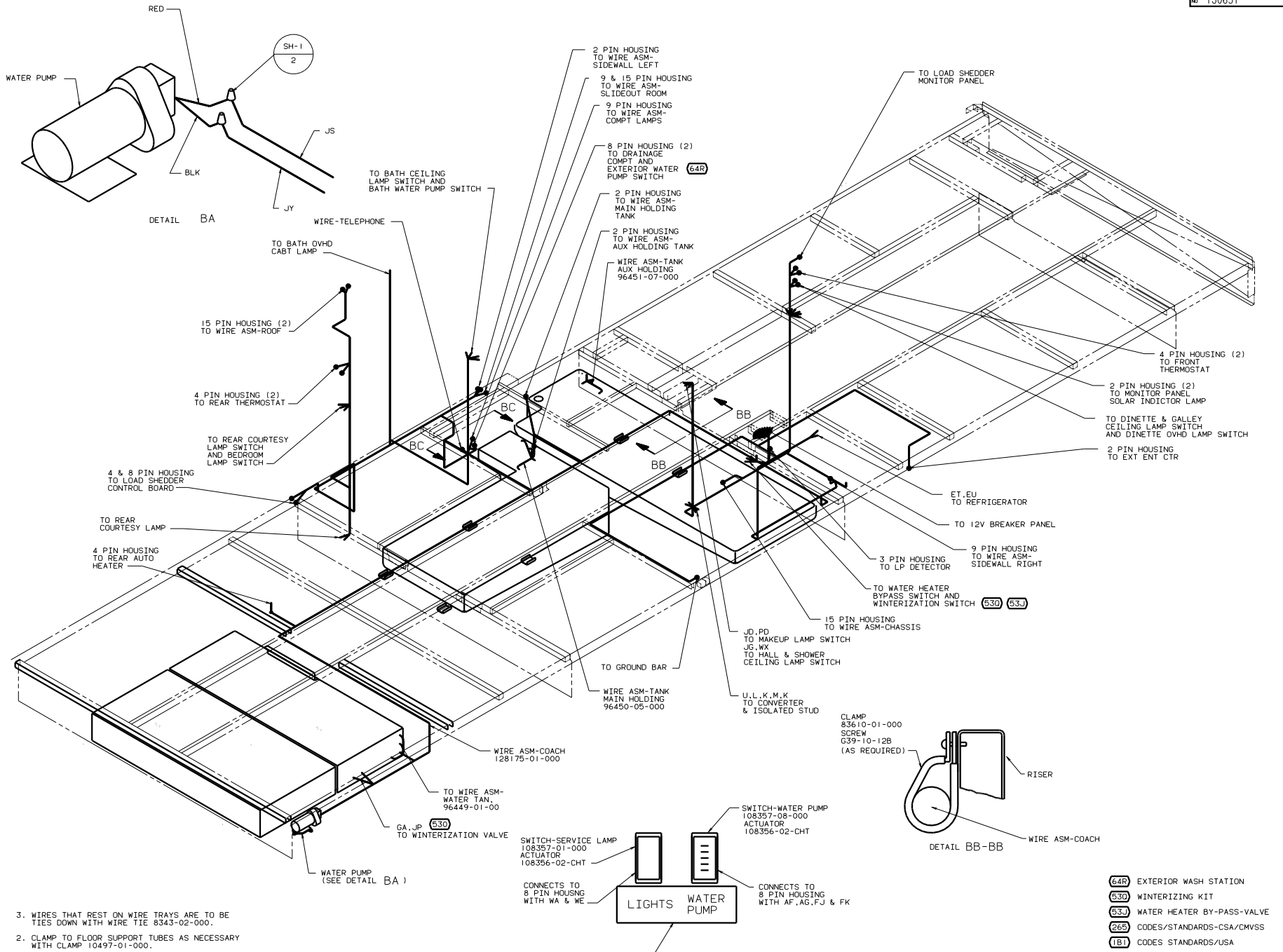
2. WIRES THAT REST ON WIRE TRAYS ARE TO BE TIED DOWN WITH WIRE TIE 8343-02-000.
 1. CLAMP TO FLOOR SUPPORT TUBES AS NECESSARY WITH CLAMP 10497-01-000.

- (45G) BED-TWINS
- (78J) ELECTRICAL SYSTEM - 50 AMP
- (265) CODES/STANDARDS-CSA/CMVSS
- (IE3) ENERGY MANAGMENT SYSTEM
- (IB1) CODES STANDARDS/USA
- (120) ELECTRICAL SYSTEM 30 AMP
- (IB1) (265) (IE3) (120) (78J)

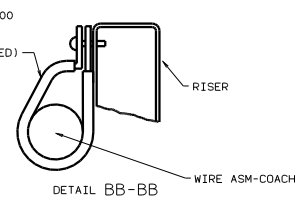
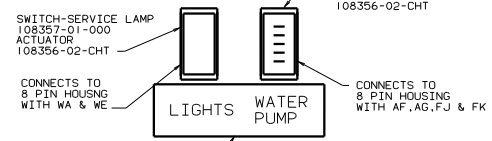
WINNEBAGO 99 L36L

DATE	DATE	UNDESIGNED TOLERANCES ARE:	MATERIAL
DATE	DATE	WHOLE DIM (IN)	
DATE	DATE	ONE-PLACE (IN.XI)	
DATE	DATE	TWO-PLACE (IN.XX)	
DATE	DATE	MIXED	
DATE	DATE	THIRD WHOLE	
DATE	DATE	PRODUCTION	

LANE# 1 TITLE: WIRING INSTL-BODY (BL 110V)
 REV # 1 SCALE: NONE 10:10 SCALE: NONE 1:1
 ALL DIMENSIONS ARE IN MILLIMETERS SHEET 1 OF 22 130651



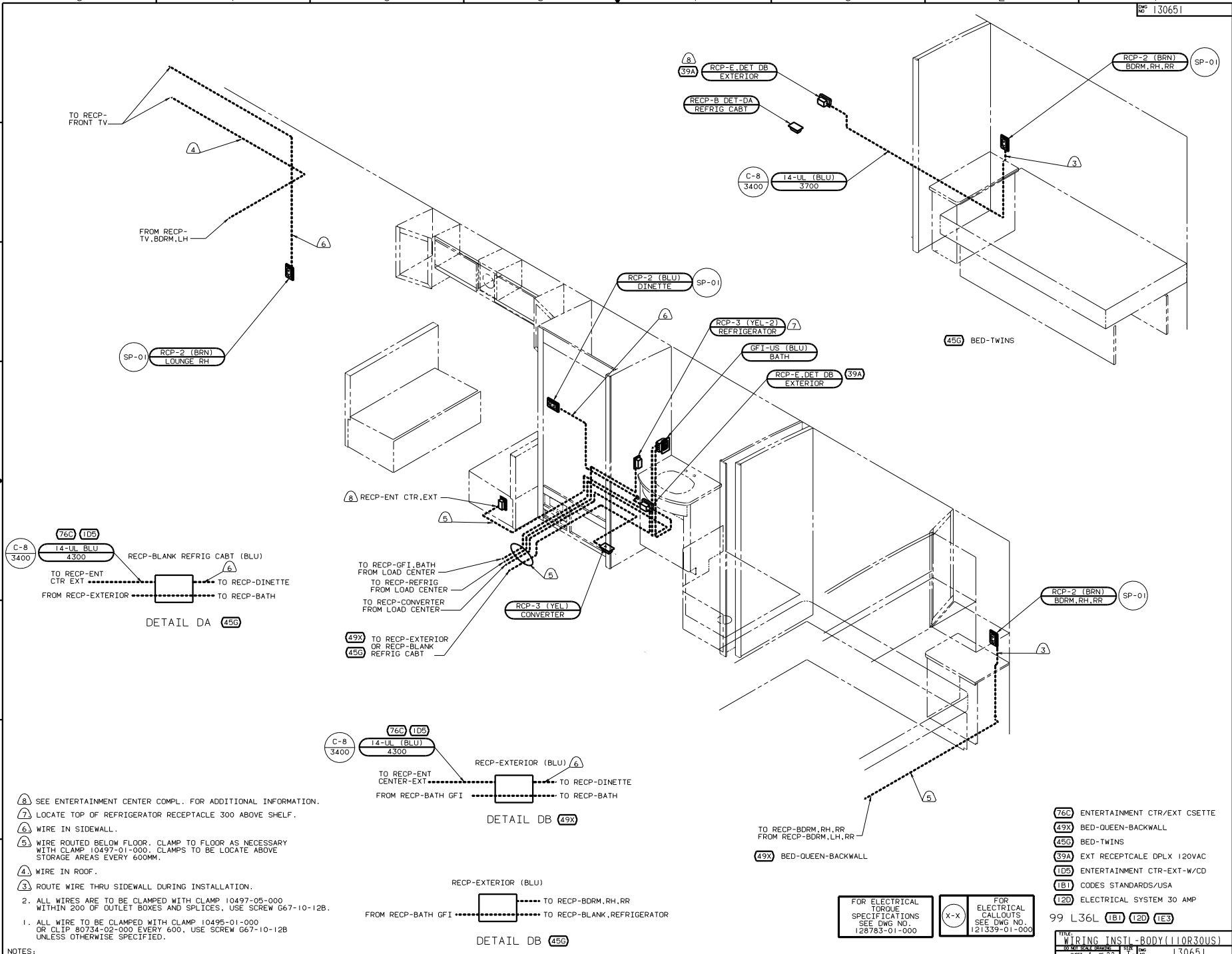
3. WIRES THAT REST ON WIRE TRAYS ARE TO BE TIED DOWN WITH WIRE TIE 8343-02-000.
2. CLAMP TO FLOOR SUPPORT TUBES AS NECESSARY WITH CLAMP 10497-01-000.
1. ALL WIRES TO BE CLAMPED WITH CLAMP 10495-01-000 OR CLIP 80734-02-000 EVERY 700. USE SCREW G67-10-12B UNLESS OTHERWISE SPECIFIED.



- 64R EXTERIOR WASH STATION
- 630 WINTERIZING KIT
- 631 WATER HEATER BY-PASS-VALVE
- 265 CODES/STANDARDS-CMA/CMVSS
- 1B1 CODES STANDARDS-USA

99 L36L 1B1 265

FILE	WIRING INSTL-BODY (BL 12V)
NO. OF SHEETS	16
SHEET	2 OF 22
DATE	1.6
NO.	130651



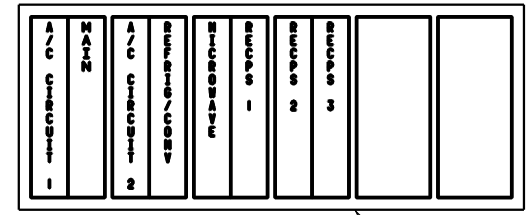
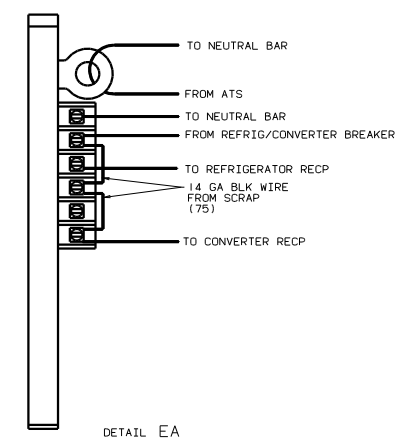
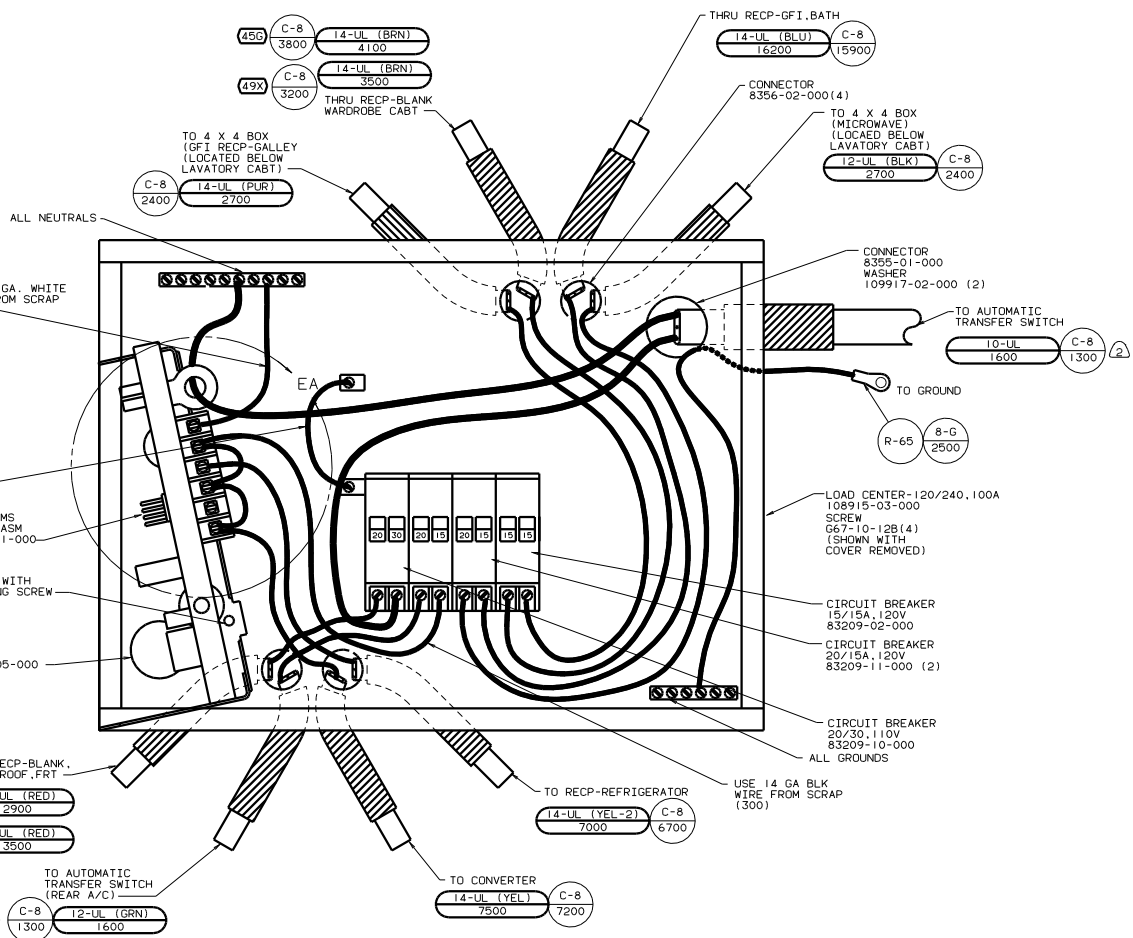
- 8) SEE ENTERTAINMENT CENTER COMPL. FOR ADDITIONAL INFORMATION.
 7) LOCATE TOP OF REFRIGERATOR RECEPTACLE 300 ABOVE SHELF.
 6) WIRE IN SIDEWALL.
 5) WIRE ROUTED BELOW FLOOR. CLAMP TO FLOOR AS NECESSARY WITH CLAMP 10497-01-000. CLAMPS TO BE LOCATE ABOVE STORAGE AREAS EVERY 600MM.
 4) WIRE IN ROOF.
 3) ROUTE WIRE THRU SIDEWALL DURING INSTALLATION.
2. ALL WIRES ARE TO BE CLAMPED WITH CLAMP 10497-05-000 WITHIN 200 OF OUTLET BOXES AND SPLICES. USE SCREW G67-10-12B.
1. ALL WIRE TO BE CLAMPED WITH CLAMP 10495-01-000 OR CLIP 80734-02-000 EVERY 600. USE SCREW G67-10-12B UNLESS OTHERWISE SPECIFIED.

- 76C ENTERTAINMENT CTR/EXT CSETTE
 49X BED-QUEEN-BACKWALL
 45G BED-TWINS
 39A EXT RECEPTACLE DPLX 120VAC
 1B5 ENTERTAINMENT CTR-EXT-W/CD
 1B1 CODES STANDARDS/USA
 12D ELECTRICAL SYSTEM 30 AMP

FOR ELECTRICAL TORQUE SPECIFICATIONS SEE DWG NO. 128783-01-000

(X-X) FOR ELECTRICAL CALLOUTS, SEE DWG NO. 121339-01-000

TITLE: WIRING INSTL-BODY (110R30US)	
NO. 2074 244 244	REV. 1.0
SHEET 4 OF 22	130651



② WIRE MUST BE 700 LONG INSIDE BOX.

1. ALL GROUND WIRES TO BE COVERED WITH TUBING 8041-02-000.

- ④9X BED-QUEEN-BACKWALL
- ④56 BED-TWINS
- ②92 A/C ROOF-HIGH EFFICIENCY
- ①E3 ENERGY MANEMNT SYSTEM
- ①B1 CODES STANDARDS/USA
- ①20 ELECTRICAL SYSTEM 30 AMP

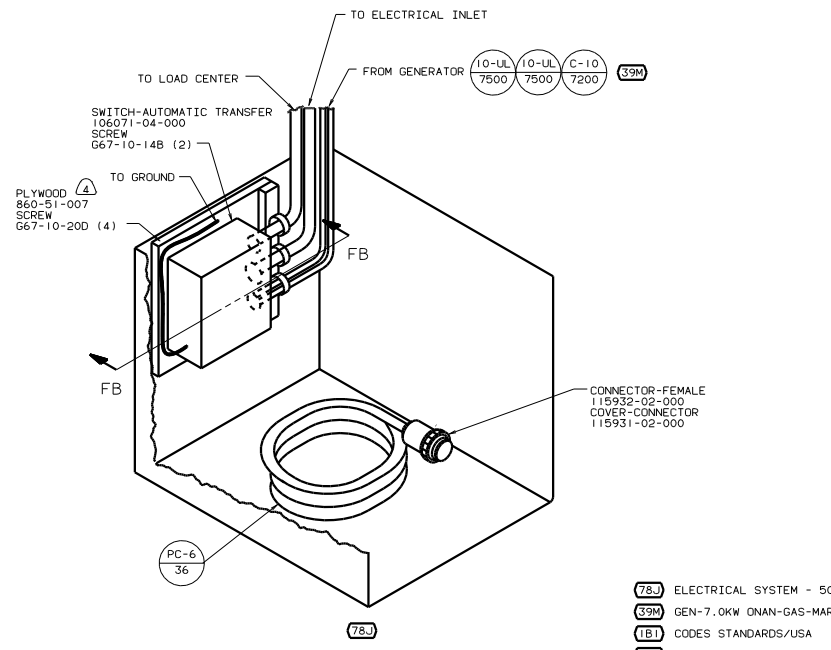
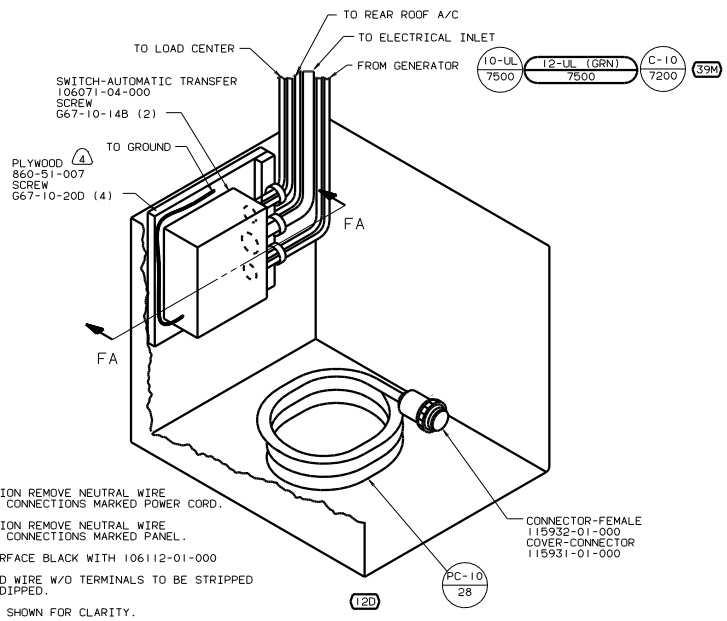
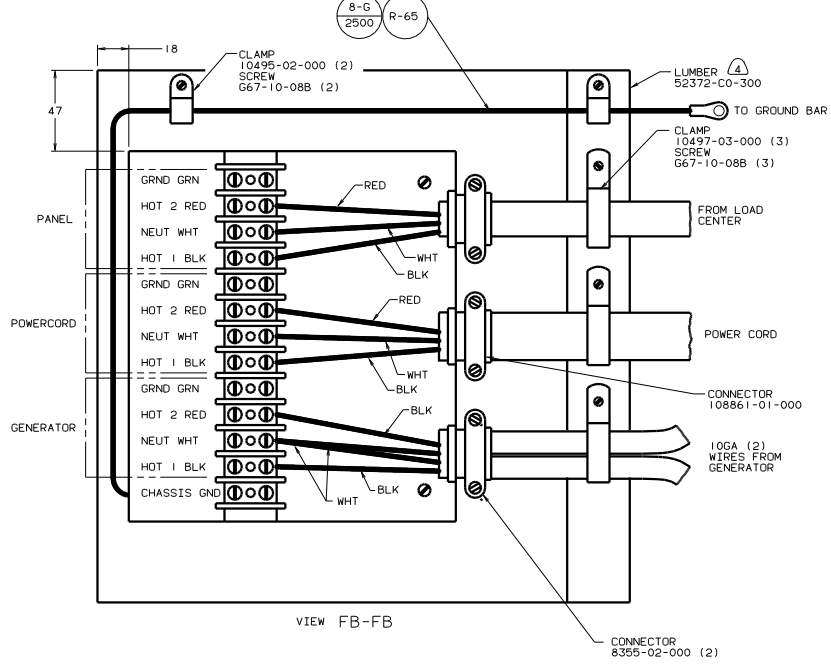
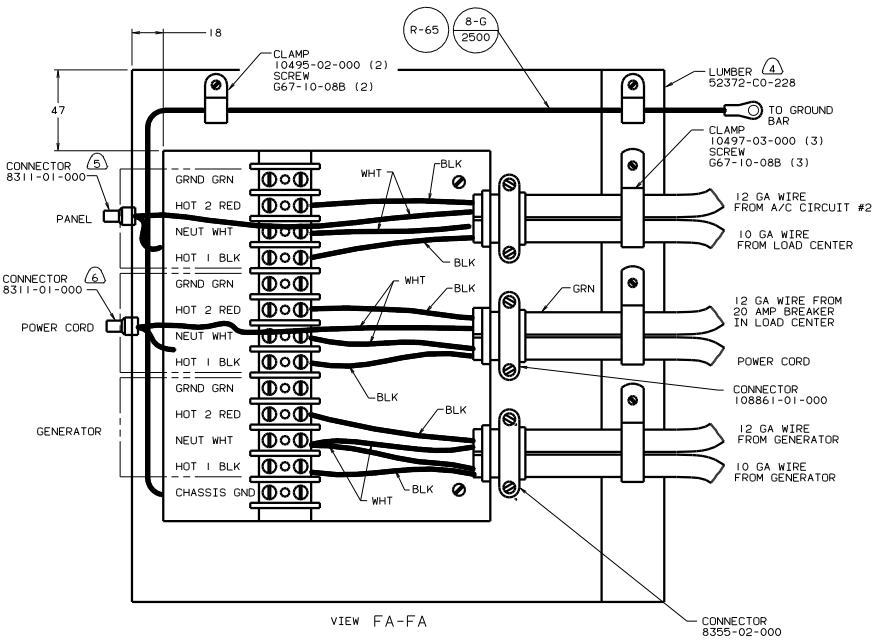
FOR ELECTRICAL TORQUE SPECIFICATIONS SEE DWG NO. 128783-01-000

(X-X) FOR ELECTRICAL CALLOUTS SEE DWG NO. 121339-01-000

99 L36L ①B1 ①20 ①E3

WIRING INSTL-BODY(30 CC US)

130651

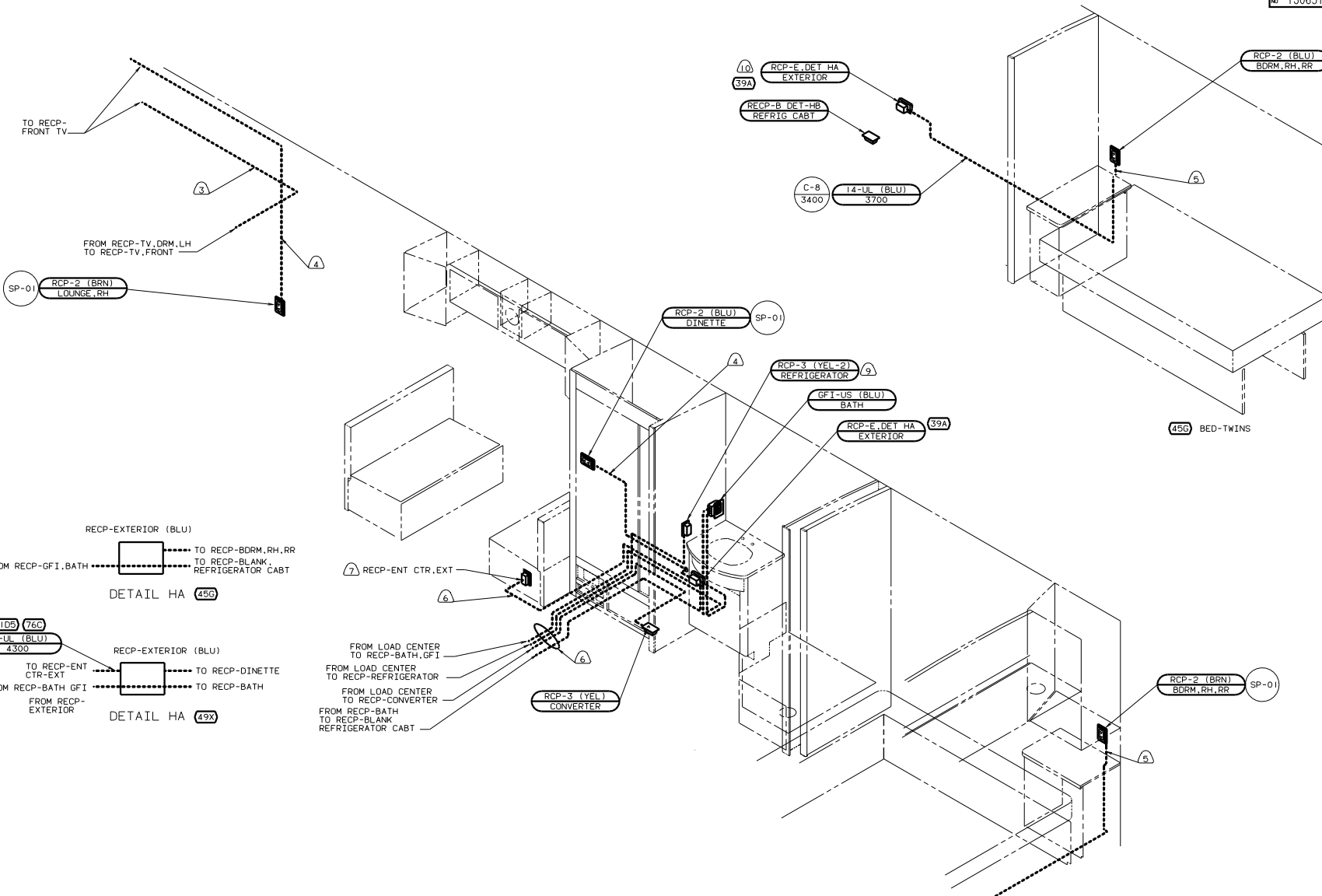


- Ⓐ FOR THIS CONNECTION REMOVE NEUTRAL WIRE MARKED BLUE FROM CONNECTIONS MARKED POWER CORD.
- Ⓑ FOR THIS CONNECTION REMOVE NEUTRAL WIRE MARKED BLUE FROM CONNECTIONS MARKED PANEL.
- Ⓓ PAINT EXPOSED SURFACE BLACK WITH 106112-01-000
- 3. ALL 110V STRANDED WIRE W/O TERMINALS TO BE STRIPPED 10MM AND SOLDER DIPPED.
- 2. GROUND WIRES NOT SHOWN FOR CLARITY.
- 1. ALL WIRES TO BE CLAMPED WITH IN 200 OF BOX.

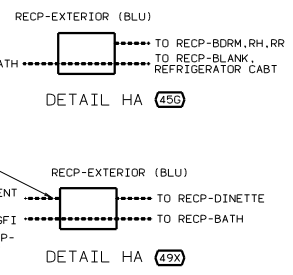
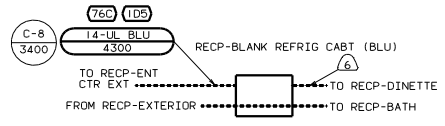
FOR ELECTRICAL TORQUE SPECIFICATIONS SEE DWG NO. 128783-01-000

FOR ELECTRICAL CALLOUTS SEE DWG NO. 121359-01-000

- 78J ELECTRICAL SYSTEM - 50 AMP
 - 39M GEN-7.0KW ONAN-GAS-MARQUIS
 - 1B1 CODES STANDARDS/USA
 - 12D ELECTRICAL SYSTEM 30 AMP
- 99 L36L 1B1



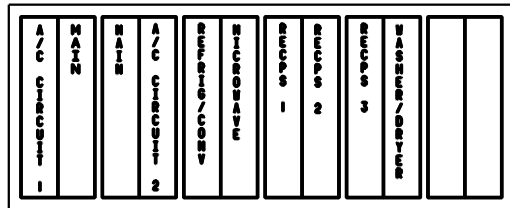
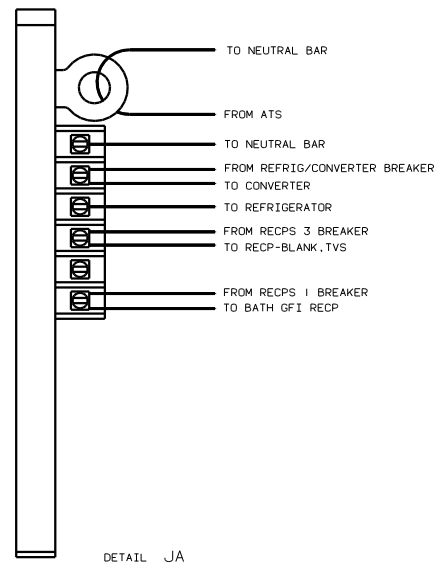
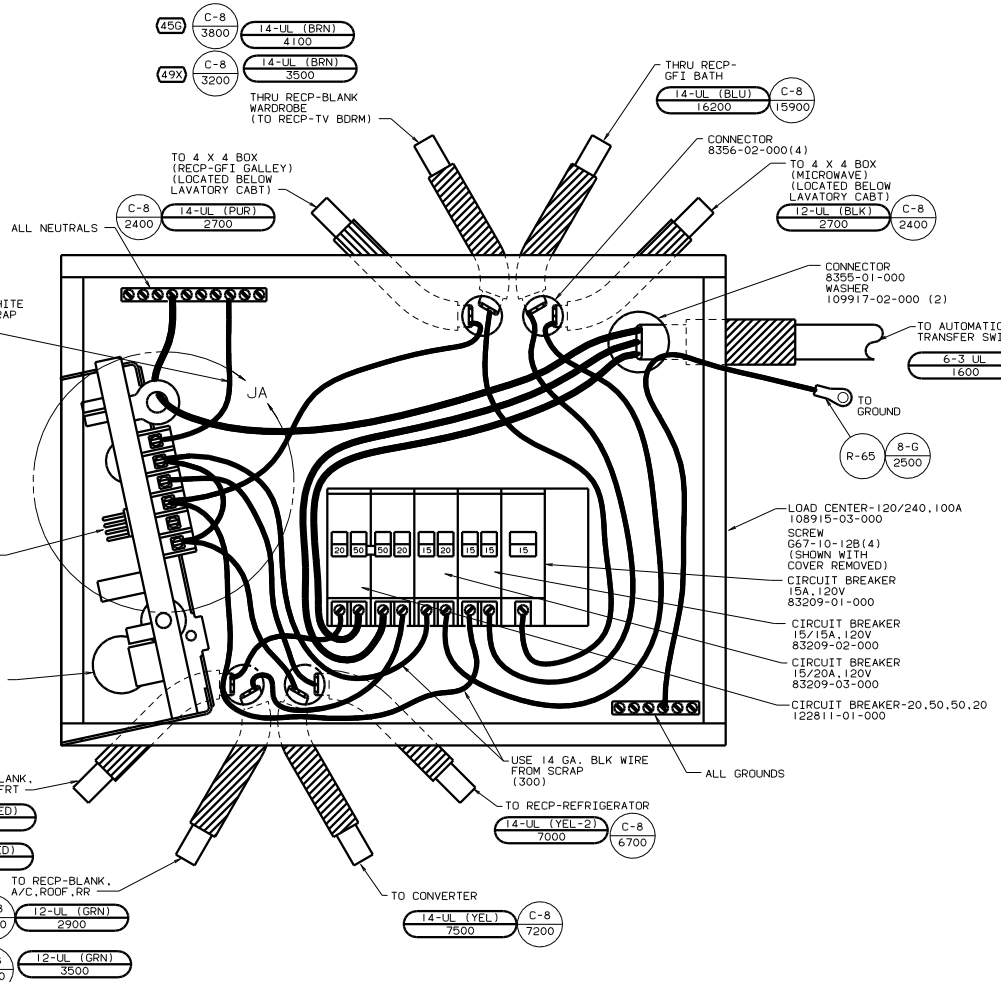
- ③ LOCATE TOP OF REFRIGERATOR RECEPTACLE 300 ABOVE SHELF.
 - ⑦ SEE ENTERTAINMENT CENTER COMP. FOR ADDITIONAL INFORMATION.
 - ⑥ WIRE ROUTED BELOW FLOOR. CLAMP TO FLOOR FRAME OR FLOOR AS NECESSARY WITH CLAMP 10497-01-000 AND SCREW C39-10-12B. CLAMPS TO BE LOCATED ABOVE STORAGE AREAS EVERY 600MM.
 - ⑤ ROUTE WIRE THRU SIDEWALL DURING INSTALLATION.
 - ④ WIRES IN SIDEWALL.
 - ③ WIRE IN ROOF.
2. ALL WIRES ARE TO BE CLAMPED WITH CLAMP 10495-05-000 WITHIN 200 OF OUTLET BOXES AND SPLICES. USE SCREW G67-10-12B.
1. ALL WIRE TO BE CLAMPED WITH CLAMP 10495-01-000 OR CLIP 80734-01-000 EVERY 600. USE SCREW G67-10-12B UNLESS OTHERWISE SPECIFIED.



FOR ELECTRICAL TORQUE SPECIFICATIONS SEE DWG NO. 128783-01-000	(X-X)	FOR ELECTRICAL CALLOUTS SEE DWG NO. 121339-01-000
--	-------	---

- (78J) ELECTRICAL SYSTEM - 50 AMP
- (76C) ENTERTAINMENT CTR/EXT CSETTE
- (49X) BED-QUEEN-BACKWALL
- (456) BED-TWINS
- (39A) EXT RECEPTACLE DPLX 120VAC
- (1D5) ENTERTAINMENT CTR-EXT-W/CD
- (1B1) CODES STANDARDS/USA

99 L36L (1B1) (78J)



INSTALL LABEL ON FRONT PANEL BELOW BREAKERS BETWEEN MOUNTING HOLES

- (2) WIRE MUST BE 700 LONG INSIDE BOX.
1. ALL GROUND WIRES TO BE COVERED WITH TUBING 8041-02-000.

- (78J) ELECTRICAL SYSTEM - 50 AMP
- (49X) BED-QUEEN-BACKWALL
- (45B) BED-TWINS
- (292) A/C ROOF-HIGH EFFICIENCY
- (IE3) ENERGY MANAGMNT SYSTEM
- (1B1) CODES STANDARDS/USA

FOR ELECTRICAL TORQUE SPECIFICATIONS SEE DWG NO. 128783-01-000

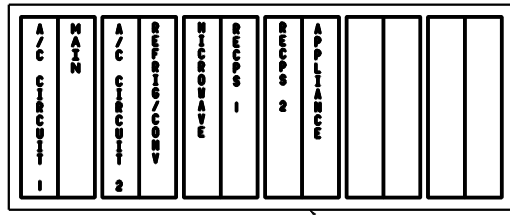
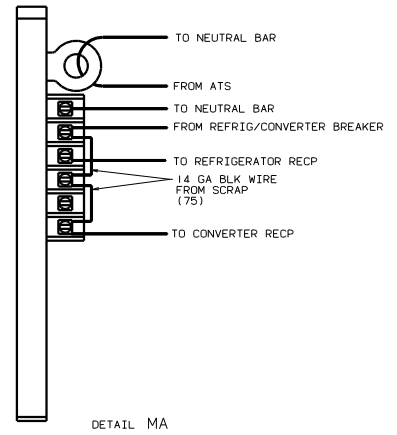
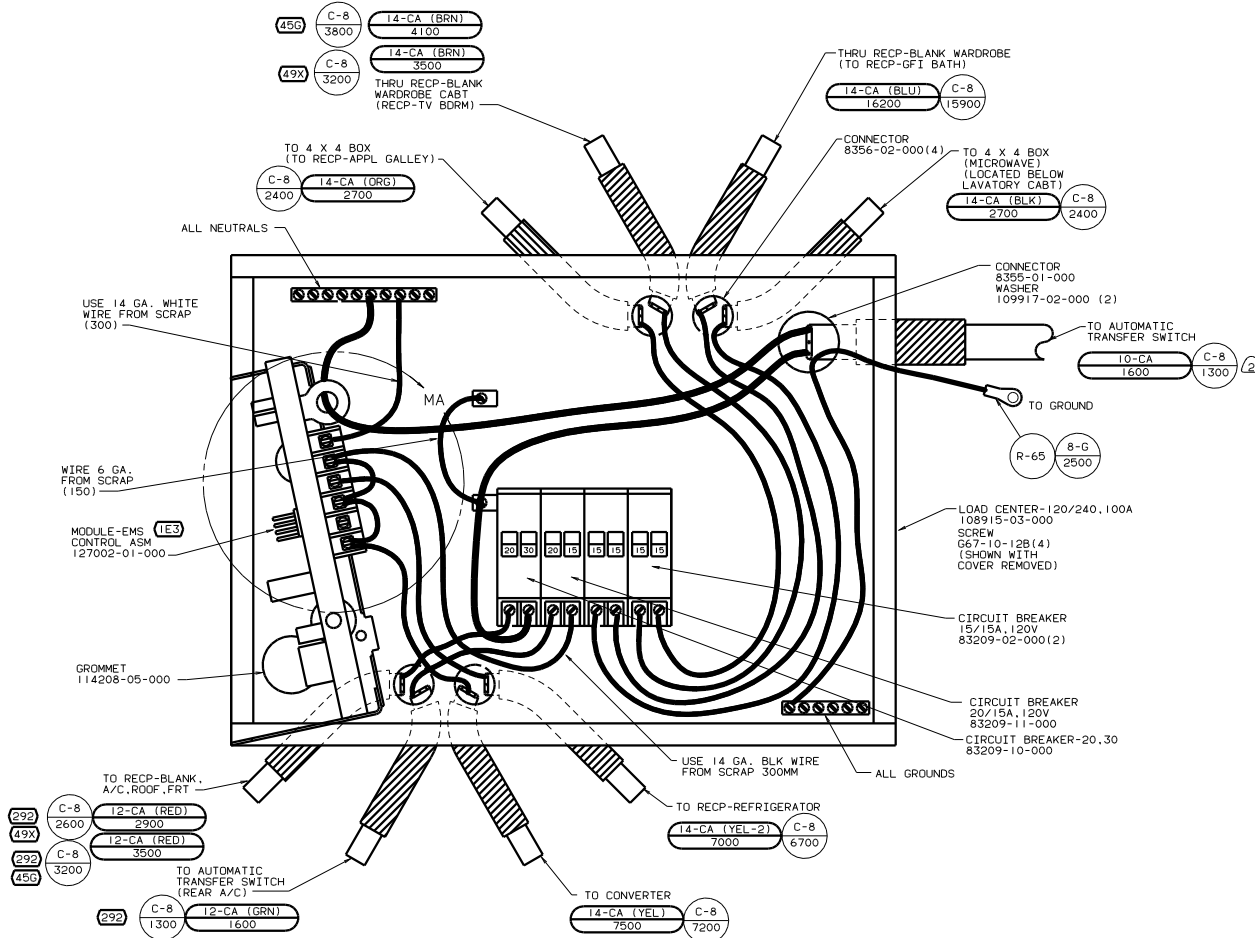
(X-X) FOR ELECTRICAL CALLOUTS SEE DWG NO. 121339-01-000

99 L36L (1B1) (78J) (IE3)

WIRING INSTL-BODY(50 CC US)

sheet 9 of 22

130651



INSTALL LABEL ON FRONT PANEL BELOW BREAKERS BETWEEN MOUNTING HOLES
 LABEL 95721-28-000

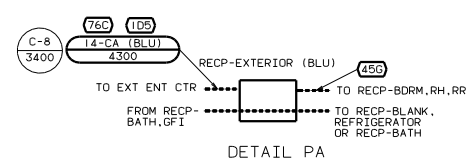
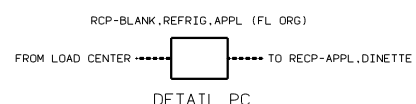
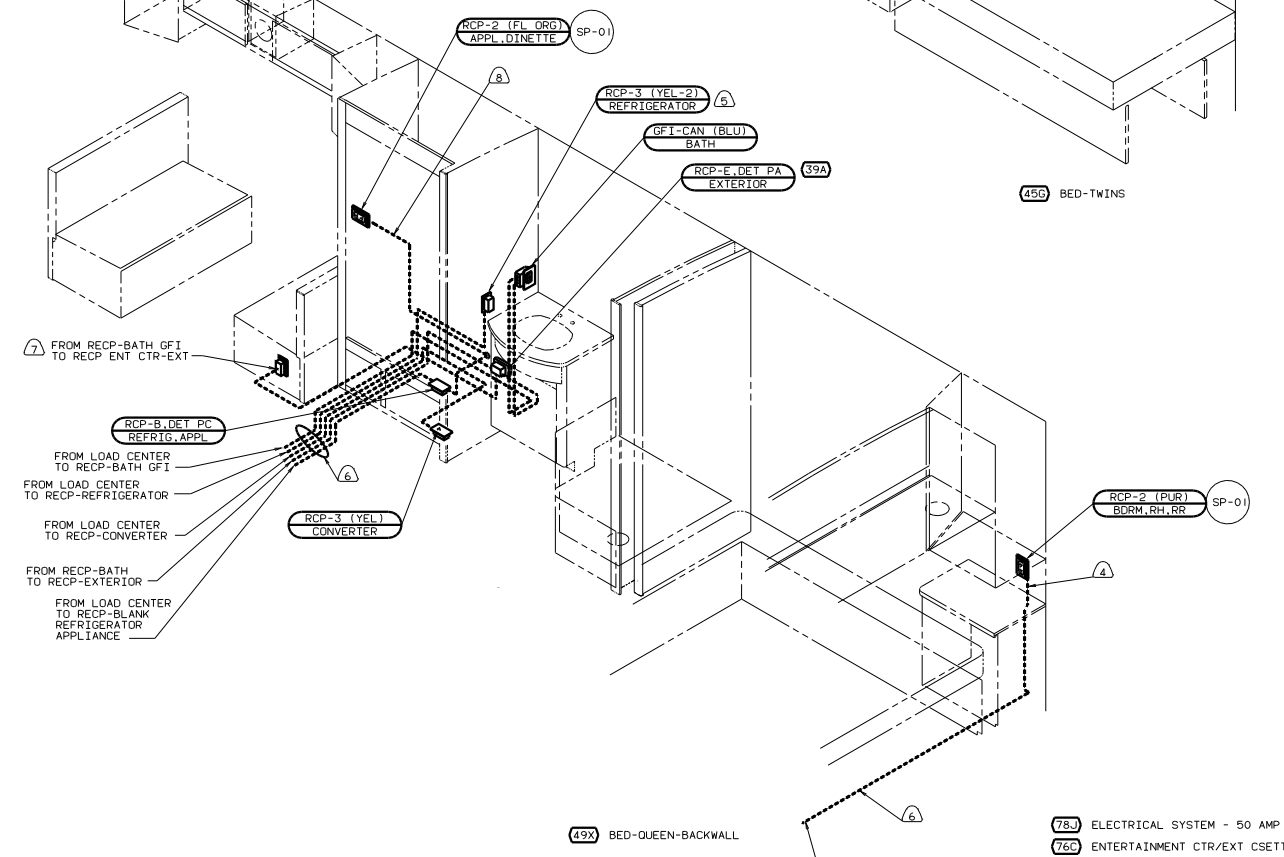
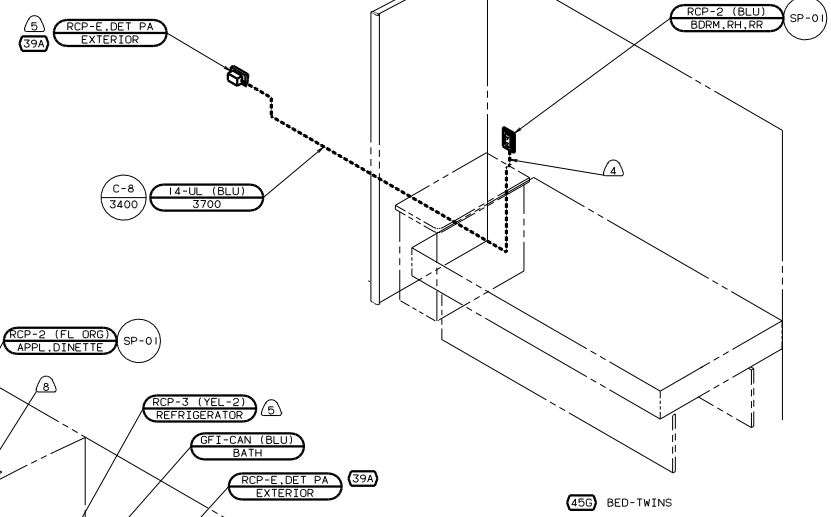
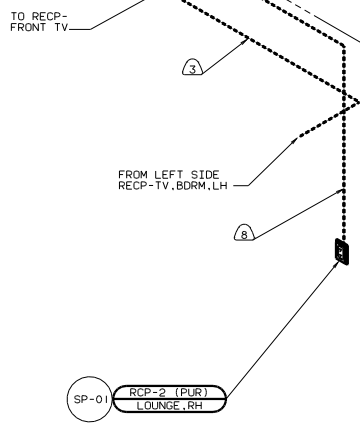
- ② WIRE MUST BE 700 LONG INSIDE BOX.
 1. ALL GROUND WIRES TO BE COVERED WITH TUBING 8041-02-000.

- (49X) BED-QUEEN-BACKWALL
- (45G) BED-TWINS
- (292) A/C ROOF-HIGH EFFICIENCY
- (265) CODES/STANDARDS-CSA/CMVSS
- (IE3) ENERGY MANAGMNT SYSTEM
- (12D) ELECTRICAL SYSTEM 30 AMP

FOR ELECTRICAL TORQUE SPECIFICATIONS SEE DWG NO. 128783-01-000

(X-X) FOR ELECTRICAL CALLOUTS SEE DWG NO. 121339-01-000

99 L36L (265) (12D) (IE3)
 WIRING INSTL-BODY(30 CC CAN)
 SHEET 12 OF 22 130651



- 8 WIRE IN SIDEWALL.
 - 7 SEE ENTERTAINMENT CENTER COMPL FOR ADDITIONAL INFORMATION.
 - 6 WIRE ROUTED BELOW FLOOR. CLAMP TO FLOOR AS NECESSARY WITH CLAMP 10497-01-000. CLAMPS TO BE LOCATED ABOVE STORAGE AREAS EVERY 600 MM.
 - 5 LOCATE TOP OF REFRIGERATOR RECEPTACLE 300 ABOVE SHELF.
 - 4 ROUTE WIRE THRU SIDEWALL DURING INSTALLATION.
 - 3 WIRE IN ROOF.
2. ALL WIRES ARE TO BE CLAMPED WITH CLAMP 10495-05-000 WITHIN 200 OF OUTLET BOXES AND SPLICES. USE SCREW 667-10-12B.
1. ALL WIRE TO BE CLAMPED WITH CLAMP 10495-01-000 OR CLIP 80734-02-000 EVERY 600. USE SCREW 667-10-12B UNLESS OTHERWISE SPECIFIED.

- 78J ELECTRICAL SYSTEM - 50 AMP
- 76C ENTERTAINMENT CTR/EXT CSETTE
- 49X BED-QUEEN-BACKWALL
- 456 BED-TWINS
- 39A EXT RECEPTACLE DPLX 120VAC
- 265 CODES/STANDARDS-CSA/CMVSS
- 1E3 ENERGY MANEGMNT SYSTEM
- 105 ENTERTAINMENT CTR-EXT-W/CD

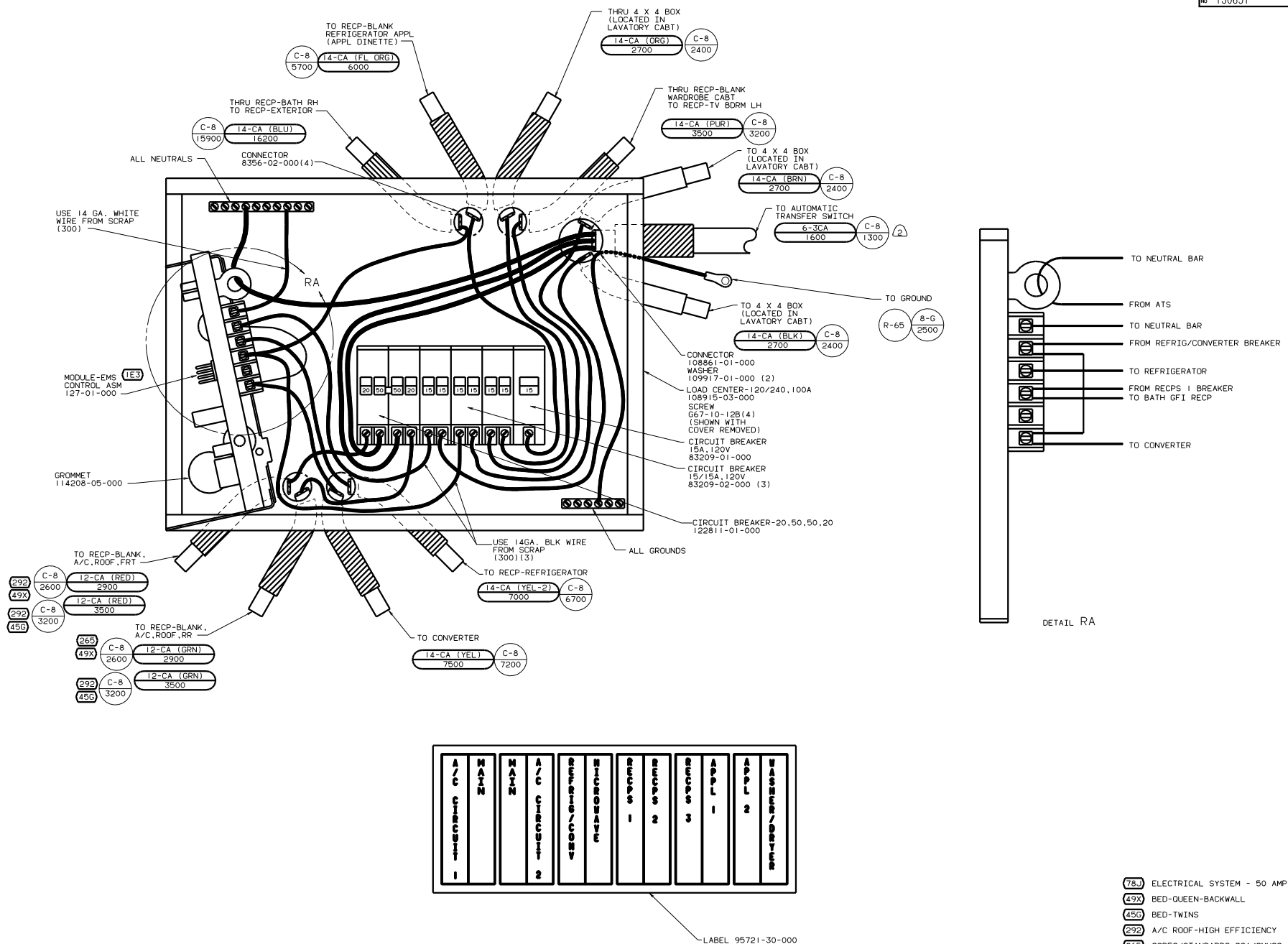
FOR ELECTRICAL TORQUE SPECIFICATIONS SEE DWG NO. 128785-01-000

FOR ELECTRICAL CALLOUTS SEE DWG NO. 121339-01-000

99 L36L 265 78J 1E3

WIRING INSTL-BODY(110R50CAN)

130651



A/C CIRCUIT 1	MAIN	MAIN	A/C CIRCUIT 2	REFRIG/CONV	WTCROWAVE	RECP'S 1	RECP'S 2	RECP'S 3	APPL 1	APPL 2	WASHER/DRYER
---------------	------	------	---------------	-------------	-----------	----------	----------	----------	--------	--------	--------------

INSTALL LABEL ON FRONT PANEL BELOW BREAKERS BETWEEN MOUNTING HOLES

LABEL 95721-30-000

2 WIRE MUST BE 700 LONG INSIDE BOX.

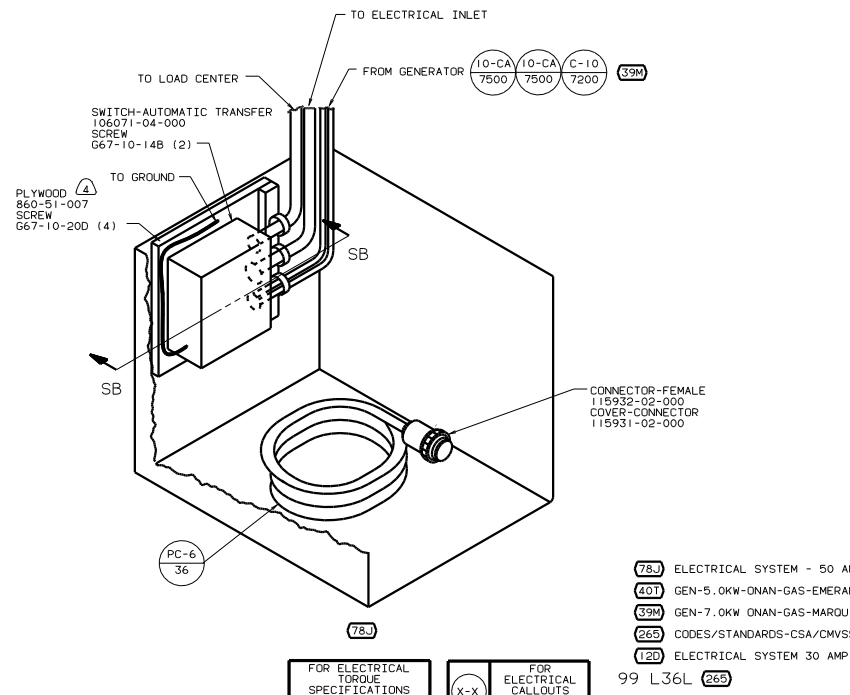
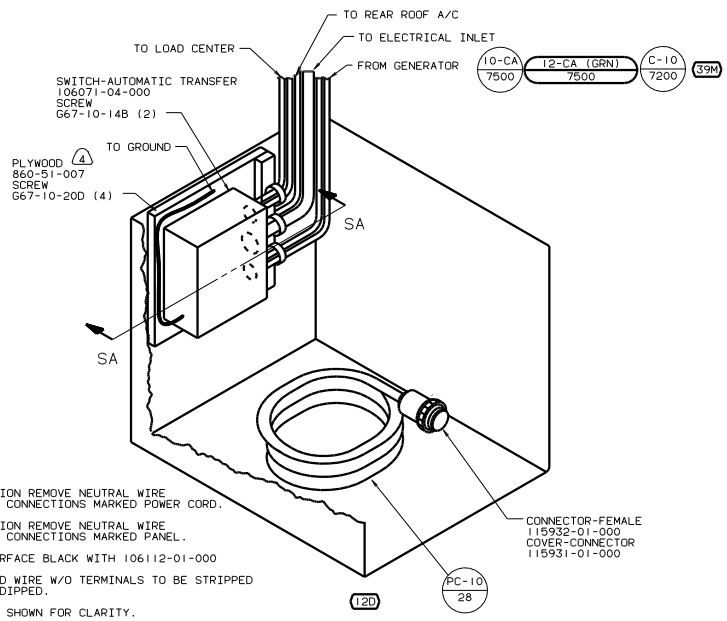
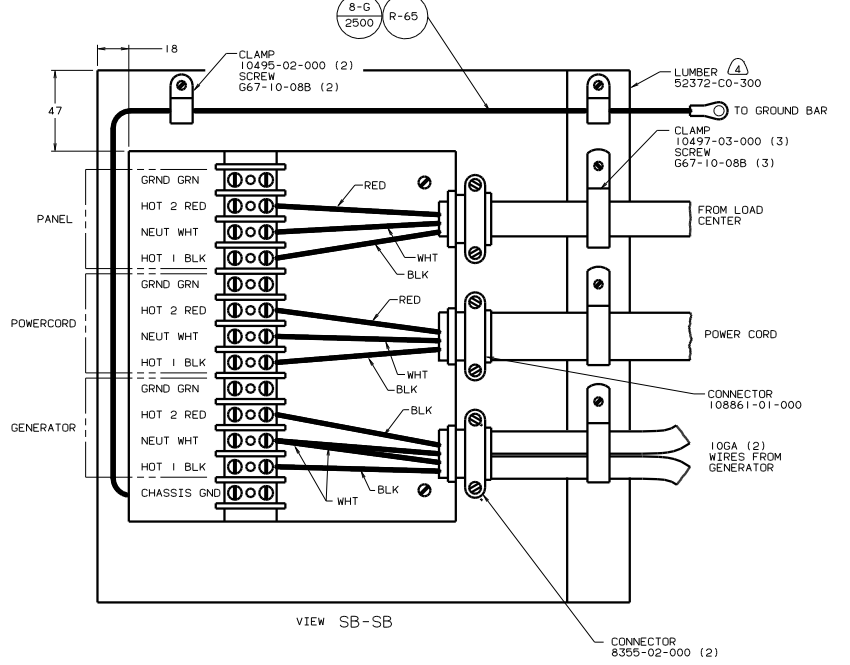
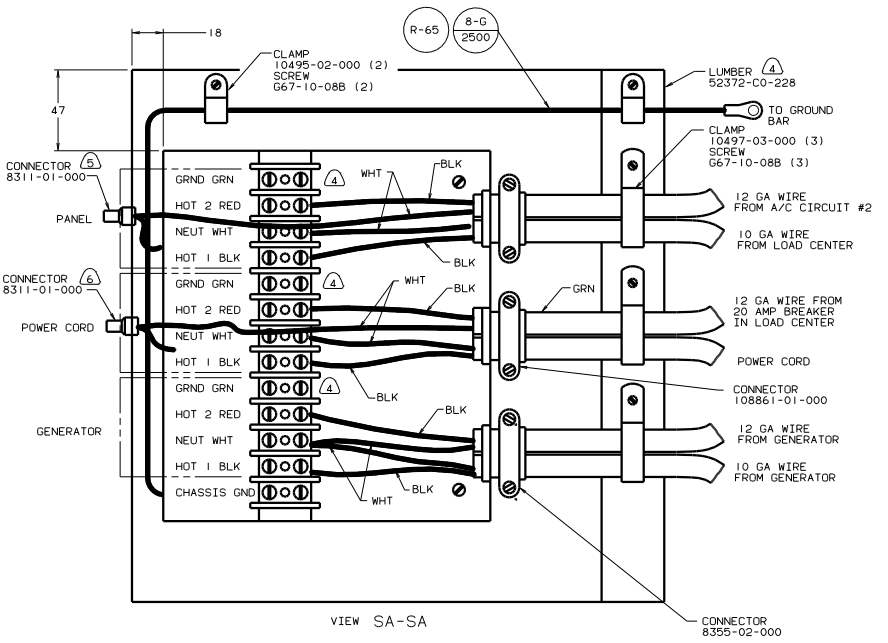
1. ALL GROUND WIRES TO BE COVERED WITH TUBING 8041-02-000.

- 78J ELECTRICAL SYSTEM - 50 AMP
- 49X BED-QUEEN-BACKWALL
- 45G BED-TWINS
- 292 A/C ROOF-HIGH EFFICIENCY
- 265 CODES/STANDARDS-CSA/CMVSS
- 1E3 ENERGY MANAGEMENT SYSTEM

FOR ELECTRICAL TORQUE SPECIFICATIONS SEE DWG NO. 128783-01-000

FOR ELECTRICAL CALLOUTS SEE DWG NO. 121339-01-000

99 L36L 265 78J 1E3
 TITLE: WIRING INSTL-BODY(50 CC CAN)
 30 DAY SCALE DRAWING FILE NO. 130651
 SHEET 15 OF 22 I.E. NO. 130651



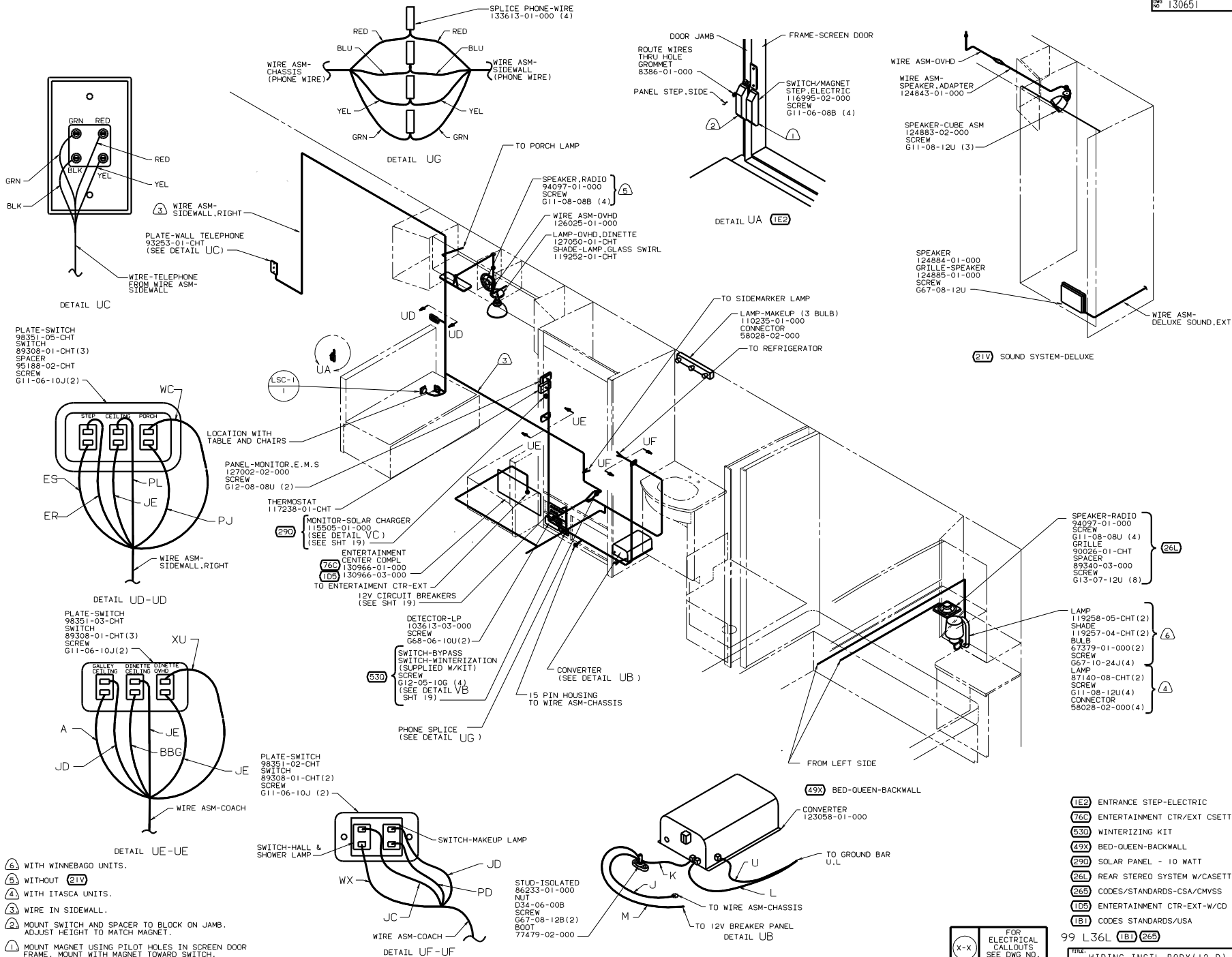
- Ⓐ FOR THIS CONNECTION REMOVE NEUTRAL WIRE MARKED BLUE FROM CONNECTIONS MARKED POWER CORD.
- Ⓑ FOR THIS CONNECTION REMOVE NEUTRAL WIRE MARKED BLUE FROM CONNECTIONS MARKED PANEL.
- Ⓒ PAINT EXPOSED SURFACE BLACK WITH 106112-01-000
- 3. ALL 110V STRANDED WIRE W/O TERMINALS TO BE STRIPPED 10MM AND SOLDER DIPPED.
- 2. GROUND WIRES NOT SHOWN FOR CLARITY.
- 1. ALL WIRES TO BE CLAMPED WITH IN 200 OF BOX.

FOR ELECTRICAL TORQUE SPECIFICATIONS SEE DWG NO. 128783-01-000

X-X

FOR ELECTRICAL CALLOUTS SEE DWG NO. 121359-01-000

- 78J ELECTRICAL SYSTEM - 50 AMP
- 40T GEN-5.0KW-ONAN-GAS-EMERALD
- 39M GEN-7.0KW-ONAN-GAS-MARQUIS
- 265 CODES/STANDARDS-CSA-CMVSS
- 12D ELECTRICAL SYSTEM 30 AMP

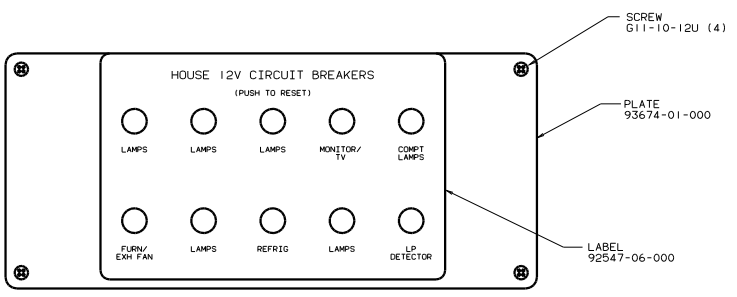
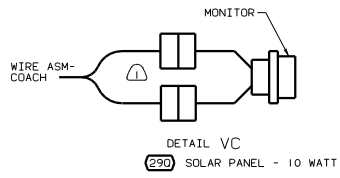


- Ⓐ WITH WINNEBAGO UNITS.
- Ⓑ WITHOUT 21V.
- Ⓒ WITH ITASCA UNITS.
- Ⓓ WIRE IN SIDEWALL.
- Ⓔ MOUNT SWITCH AND SPACER TO BLOCK ON JAMB. ADJUST HEIGHT TO MATCH MAGNET.
- Ⓕ MOUNT MAGNET USING PILOT HOLES IN SCREEN DOOR FRAME. MOUNT WITH MAGNET TOWARD SWITCH.

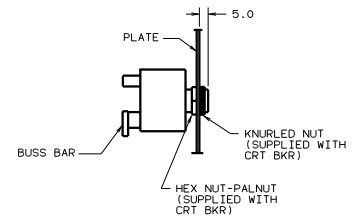
- 1E2 ENTRANCE STEP-ELECTRIC
- 76S ENTERTAINMENT CTR/EXT CASSETTE
- 530 WINTERIZING KIT
- 49X BED-QUEEN-BACKWALL
- 29D SOLAR PANEL - 10 WATT
- 26L REAR STEREO SYSTEM W/CASSETTE
- 26S CODES/STANDARDS-CSA/CMVSS
- 1DS ENTERTAINMENT CTR-EXT-W/CD
- 1B1 CODES STANDARDS/USA

FOR ELECTRICAL CALLOUTS SEE DWG NO. 121339-01-000

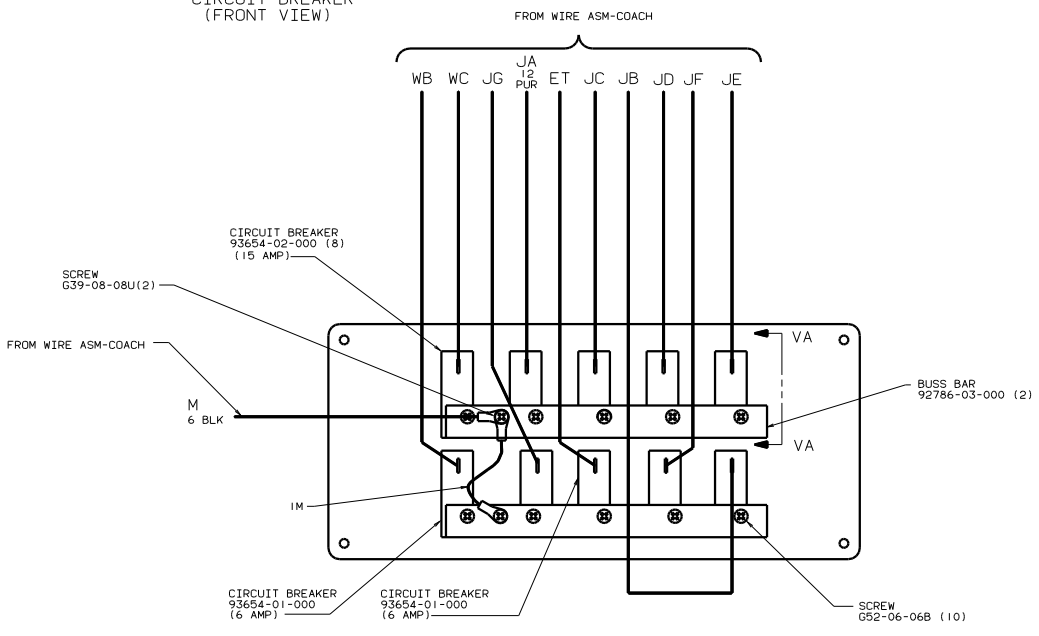
99 L36L 1B1 26S	
TITLE	WIRING INSTL-BODY (12 R)
BY	
CHK	
DATE	130651
SHEET	18 OF 22



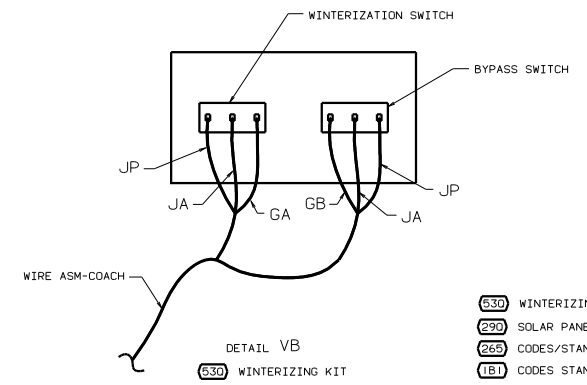
CIRCUIT BREAKER (FRONT VIEW)



SECTION VA-VA



CIRCUIT BREAKER (BACK VIEW)



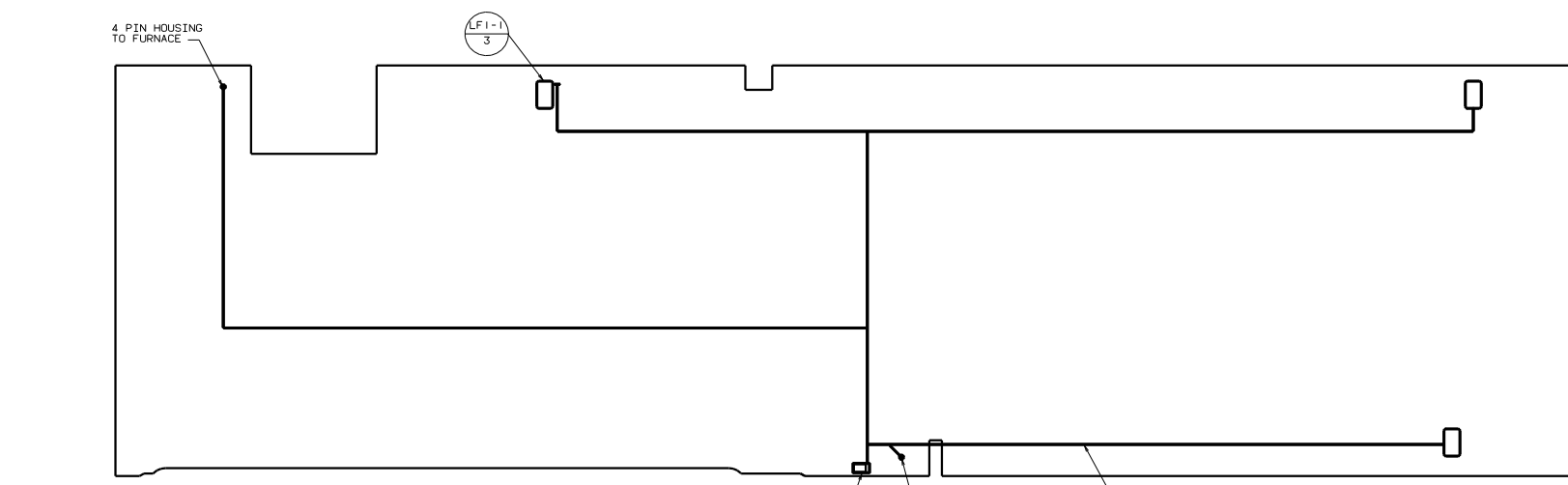
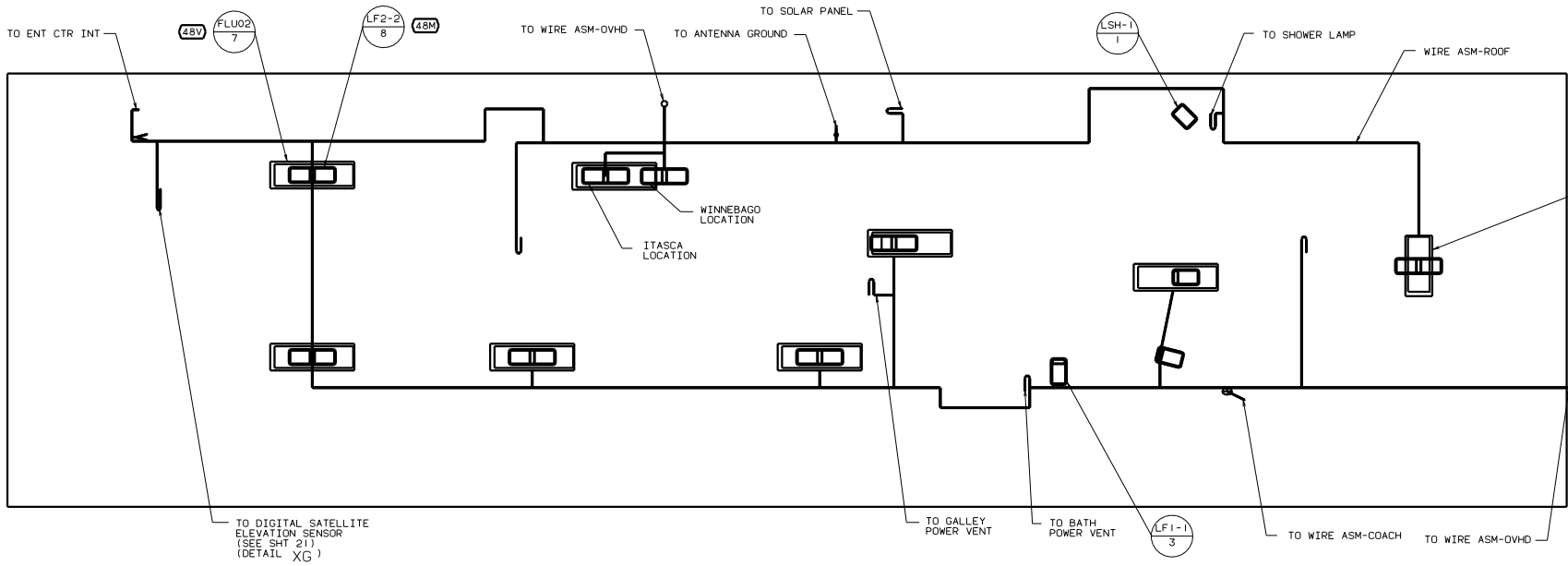
DETAIL VB

- 530 WINTERIZING KIT
- 290 SOLAR PANEL - 10 WATT
- 265 CODES/STANDARDS-CSA/CMVSS
- 1B1 CODES STANDARDS/USA

99 L36L 1B1 265

NOTES: 1. CONNECT HOUSINGS TOGETHER WITHOUT SOLAR PANEL

TITLE: WIRING INSTL-BODY(12 BP)	
30-NO SCALE	REV
SHEET 19 OF 22	1 E NO 130651



(2) WIRE ASM ROUTED IN FLOOR.

1. LAMPS TO BE MOUNTED WITH SWITCH OUTBOARD AND 75 ±20 FROM EDGE OF FLOOR.

LAMP
86280-01-000
SCREW
667-10-12U (2)
CONNECTOR
58028-01-000

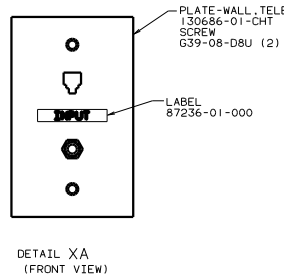
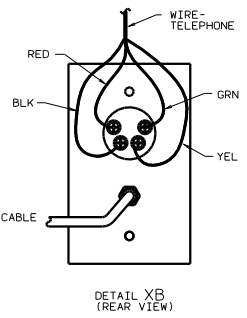
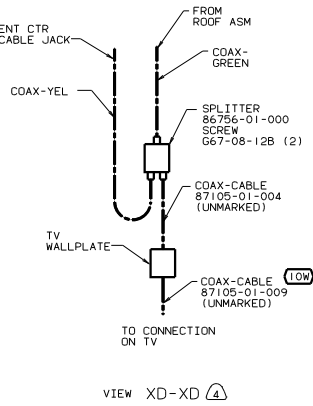
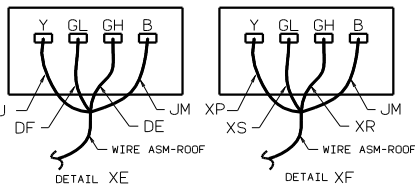
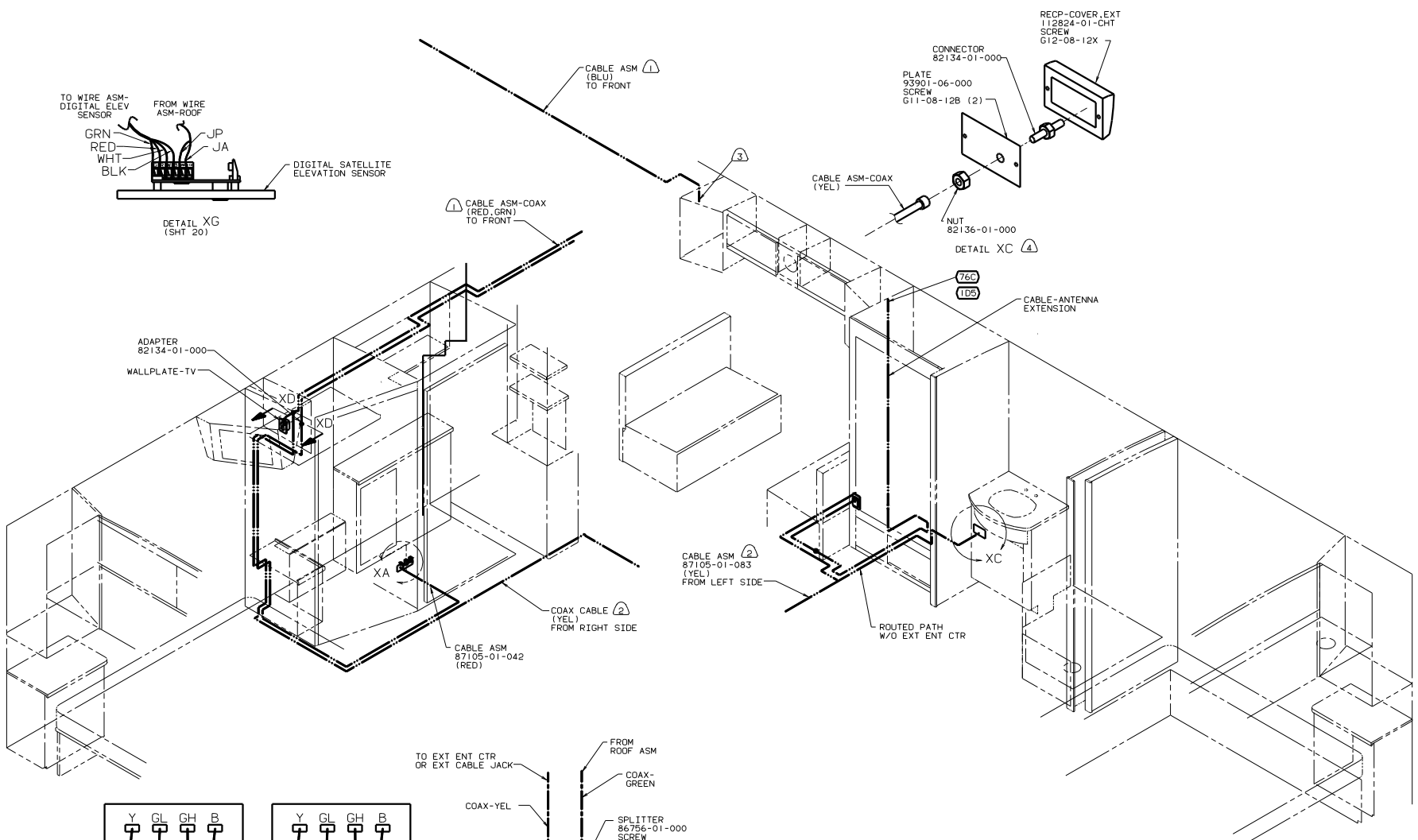
9 PIN HOUSING
TO WIRE ASM-COACH

WIRE ASM-COMPARTMENT LAMPS (2)

- (48V) LIGHTS-FLUORESCENT
- (48M) LIGHTS-INCANDESCENT
- (265) CODES/STANDARDS-CSA/CMVSS
- (1B1) CODES STANDARDS/USA

FOR ELECTRICAL CALLOUTS
SEE DWG NO. 121339-01-000

99 L36L (1B1) (265)
TITLE: WIRING INSTL-BODY(12 CL)
SHEET 20 OF 22

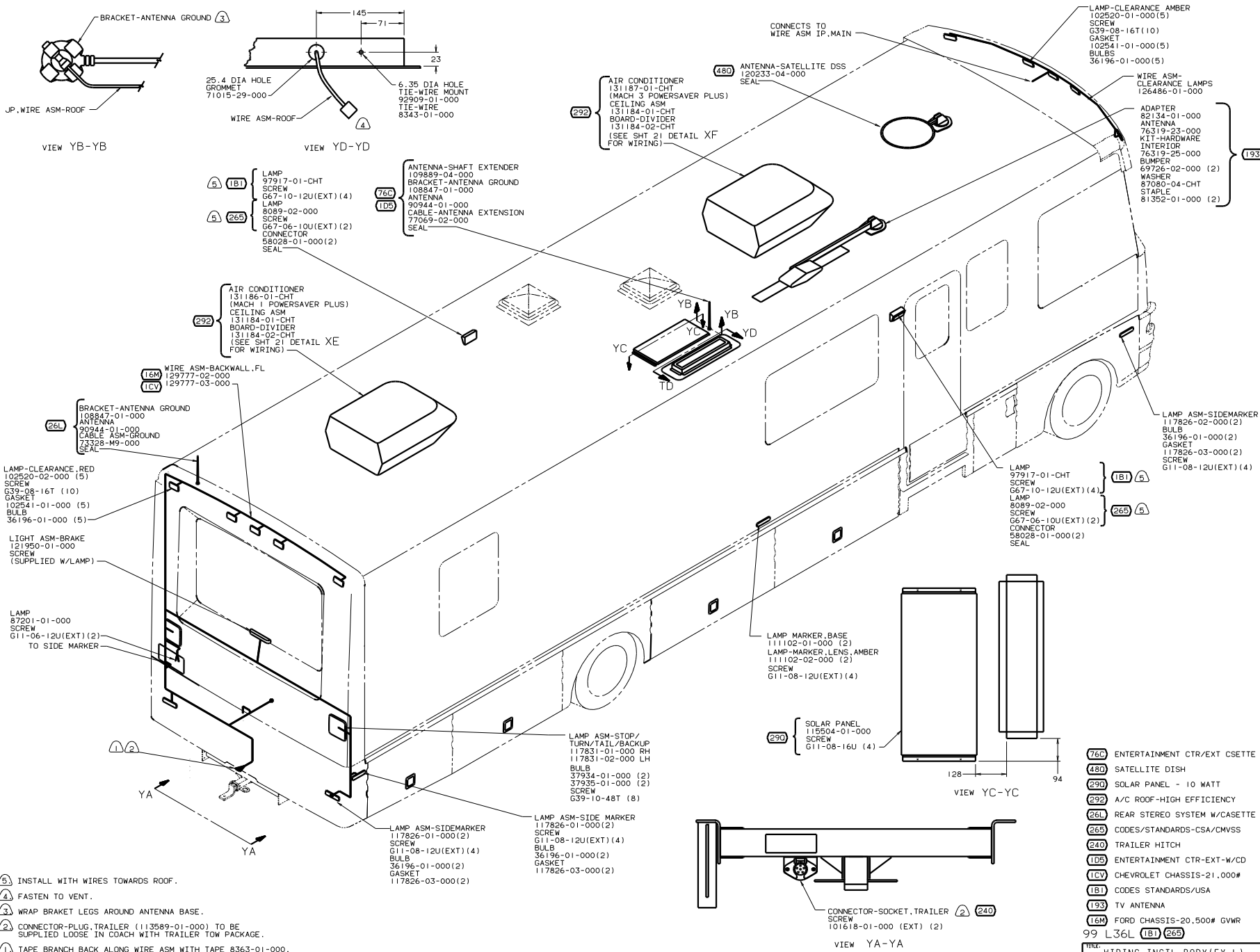


- 76C ENTERTAINMENT CTR/EXT CSETTE
- 265 CODES/STANDARDS-CSA/CMVSS
- 1D5 ENTERTAINMENT CTR-EXT-W/CD
- 1B1 CODES STANDARDS/USA
- 10W TV-REAR

99 L36L (1B1) (265)

TITLE: WIRING INSTL-BODY(COAX)
 SHEET 21 OF 22
 130651

- NOTES:
- 4 WITHOUT 76C OR 1D5
 - 3 SEE SHT 22 FOR ANTENNA CALLOUT.
 - 2 WIRE IN FLOOR.
 - 1 WIRE IN ROOF.



- NOTES:
- 3 INSTALL WITH WIRES TOWARDS ROOF.
 - 4 FASTEN TO VENT.
 - 3 WRAP BRACKET LEGS AROUND ANTENNA BASE.
 - 2 CONNECTOR-PLUG, TRAILER (113589-01-000) TO BE SUPPLIED LOOSE IN COACH WITH TRAILER TOW PACKAGE.
 - 1 TAPE BRANCH BACK ALONG WIRE ASM WITH TAPE 8363-01-000.

- 760 ENTERTAINMENT CTR/EXT CSETTE
- 480 SATELLITE DISH
- 290 SOLAR PANEL - 10 WATT
- 292 A/C ROOF-HIGH EFFICIENCY
- 26L REAR STEREO SYSTEM W/CASSETTE
- 265 CODES/STANDARDS-CSA/CMVSS
- 240 TRAILER HITCH
- 105 ENTERTAINMENT CTR-EXT-W/CD
- 1CV CHEVROLET CHASSIS-21.000#
- 181 CODES STANDARDS-USA
- 193 TV ANTENNA
- 16M FORD CHASSIS-20.500# GVWR
- 99 L36L 181 265