



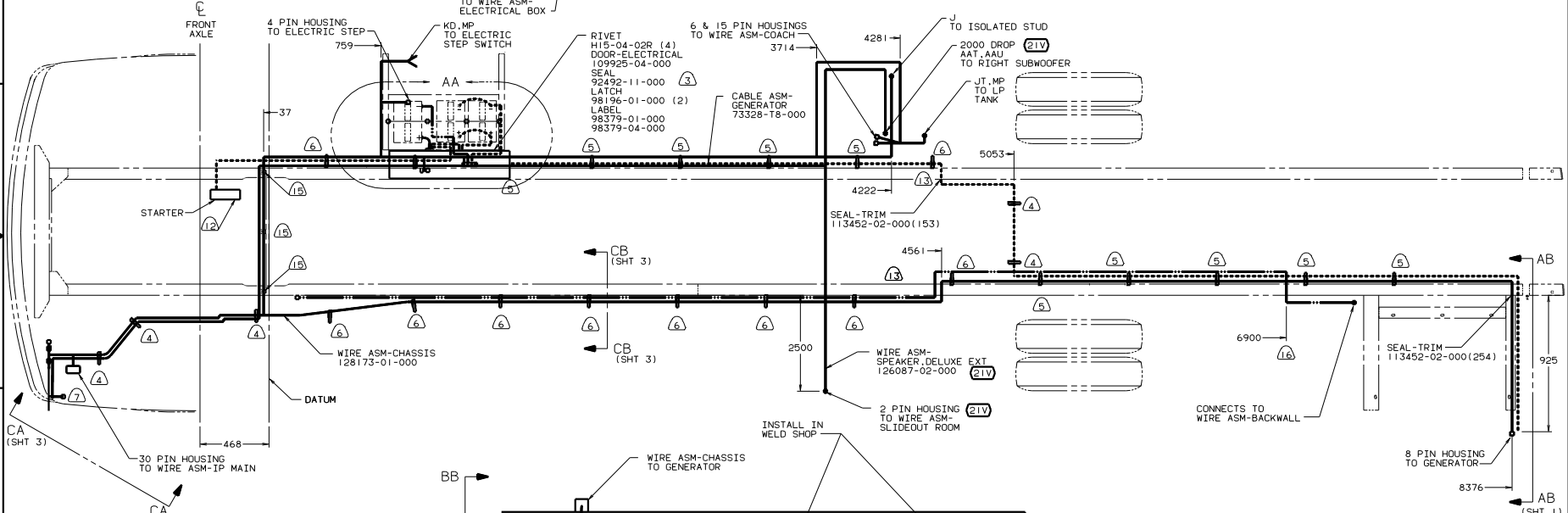
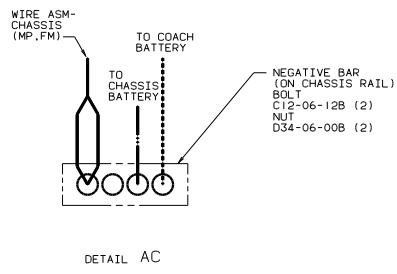
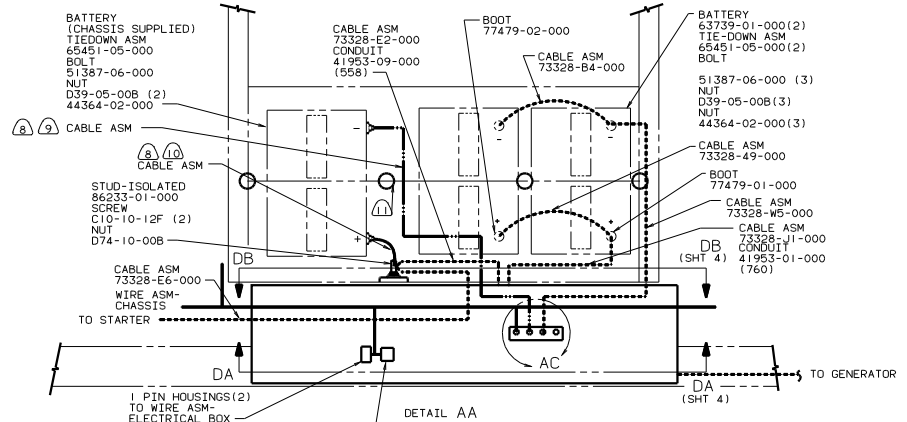
DANGER

Danger of electrical shock, burns or death. Always remove all power sources before attempting any repair, service or diagnostic work. Power can be present from shore power, generator, inverter or battery. All power sources must be disabled and secured before performing any service.

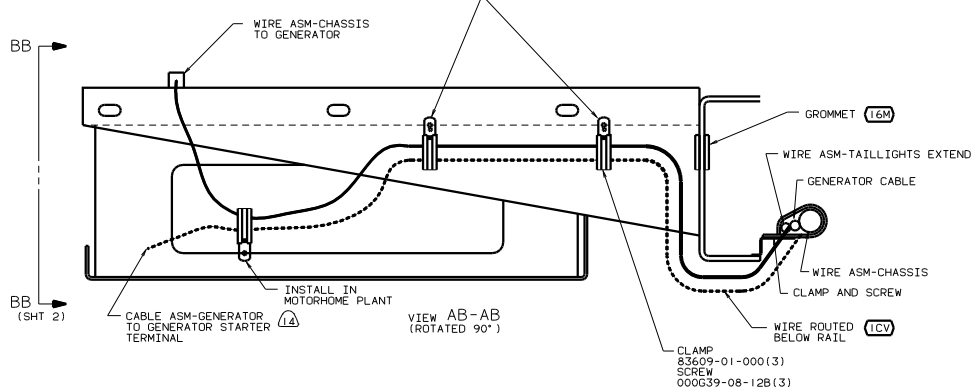


CAUTION

If you lack the skills, tools or equipment to perform diagnostic or repair work leave such work to an authorized Winnebago Industries dealer or other qualified shop.



- (15) USE WIRE TIE 8343-03-000.
- (14) SECURE SO WIRES DO NOT CONTACT EXHAUST.
- (13) ROUTE CABLES OVER CHASSIS RAIL IN THIS AREA. FOLLOW ORIGINAL CABLE PATHS INSIDE RAIL.
- (12) BATTERY CABLE MUST BE INSTALLED TO STARTER MOTOR BEFORE ENGINE WIRING HARNESS AND ROUTED IN SUCH A MANNER AS TO PREVENT ANY POSSIBLE DEGRADATION FROM THE EXHAUST SYSTEM.
- (11) USE TWO NUTS HERE TO ACCOUNT FOR BATTERY HEIGHT DIFFERENCE.
- (10) TRIM CABLE TO 400MM, ADD TERMINAL 8348-01-000.
- (9) TRIM CABLE TO 600MM, ADD TERMINAL 8348-01-000.
- (8) SUPPLIED WITH CHASSIS.
- (7) SEE WIRING INSTL-FRONT END FOR ADDITIONAL INFORMATION.
- (6) CLAMP 10497-02-000 AND SCREW G39-08-12B.
- (5) CLAMP 83609-01-000 AND SCREW G39-08-12B.
- (4) CLAMP 83610-01-000, SCREW G39-08-12B.
- (3) PLACE AROUND ENTIRE PERIMETER OF DOOR WITH SEAM AT TOP.



- (16M) FORD CHASSIS-20.500# GVWR
- (265) CODES/STANDARDS-CSA/CMVSS
- (21V) SOUND SYSTEM-DELUXE
- (1CV) CHEVROLET CHASSIS-21.000#
- (1B1) CODES STANDARDS/USA

1. LEGEND: — WINNEBAGO; - - - - - CABLE; - · - - - CHASSIS SUPPLIED WIRING.

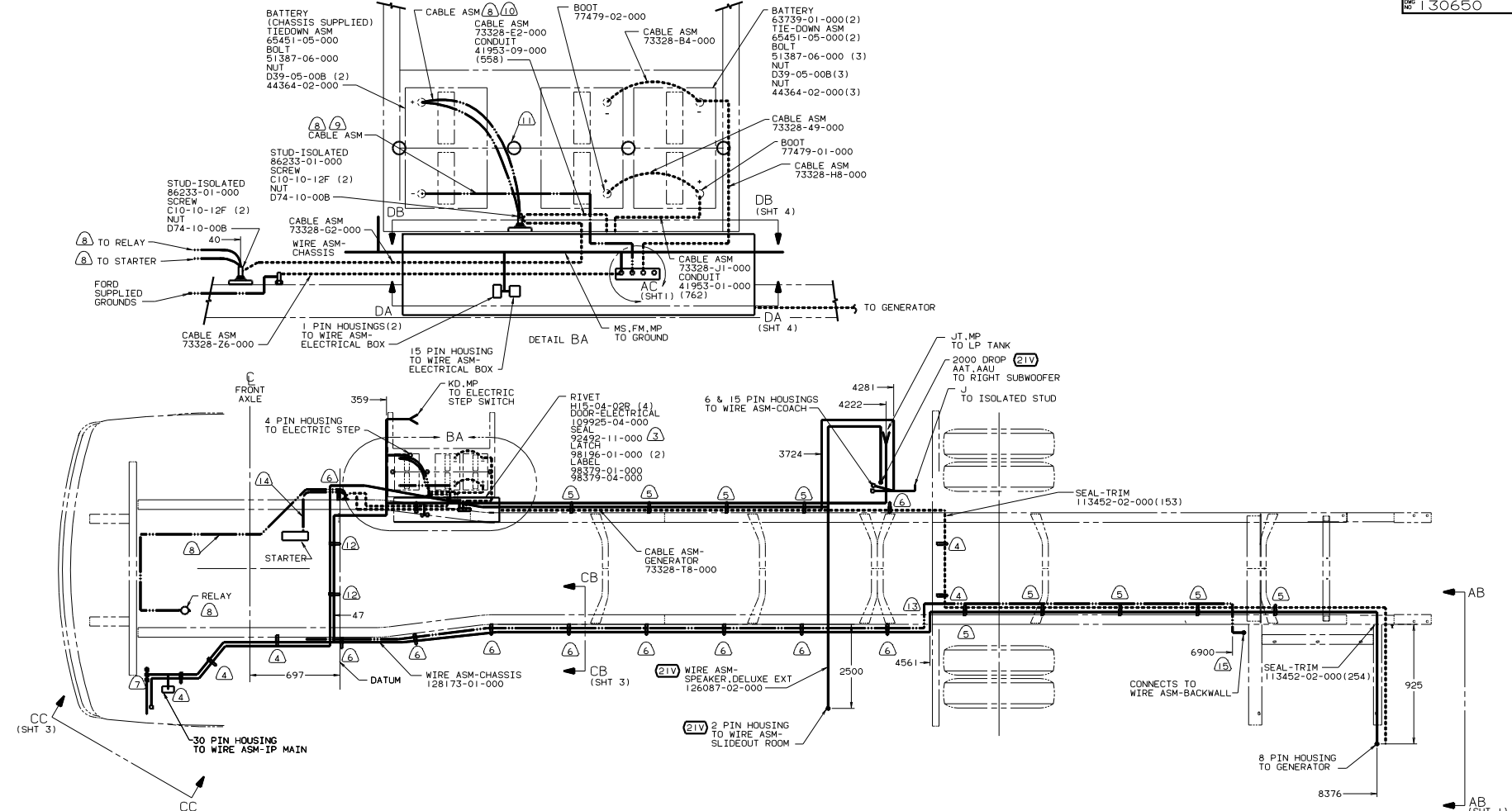
(16) WIRE ASM (CHASSIS SUPPLIED) TO CROSS OVER TOP OF CHASSIS RAIL AT THIS POINT TAPE WHITE WIRE BACK TO MAIN ASM. (DO NOT USE)

FOR ELECTRICAL TORQUE SPECIFICATIONS SEE DWG NO. 128783-01-000

WINNEBAGO 99 L36L

OF IN	DATE	UNSPECIFIED TOLERANCES ARE:	MATERIAL
CHP	DATE	WHOLE DIMS (Ø)	F 1:1
DFE	DATE	ONE-PLACE (Ø, Ø)	
D/E	DATE	TWO-PLACE (Ø, Ø)	
COM	DATE	THIRD-PLACE (Ø, Ø)	

TITLE: WIRING INSTL-CHASSIS(GM)
 SHEET 1 OF 4
 REF 128174-F 1
 130650



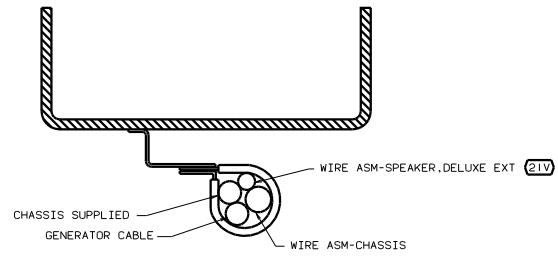
- (15) WIRE ASM (CHASSIS SUPPLIED) TO CROSS OVER TOP OF CHASSIS AT THIS POINT TAPE WHITE WIRE BACK TO MAIN ASM (DO NOT USE)
- (14) BATTERY CABLE MUST BE INSTALLED TO STARTER MOTOR BEFORE ENGINE WIRING HARNESS AND ROUTED IN SUCH A MANNER AS TO PREVENT ANY POSSIBLE DEGRADATION FROM THE EXHAUST SYSTEM.
- (13) ROUTE CABLES OVER CHASSIS RAIL IN THIS AREA. FOLLOW ORIGINAL CABLE PATHS INSIDE RAIL.
- (12) USE WIRE TIE 8343-03-000.
- (11) USE TWO NUTS HERE TO ACCOUNT FOR BATTERY HEIGHT DIFFERENCE.
- (10) CUT 4 AND 6GA CABLES 500MM FROM BATTERY TERMINAL; ADD TERMINAL 8331-01-000(2) TO 4GA CABLES AND TERMINAL 8360-01-000(2) TO 6GA CABLES. CONNECT ALL FOUR TERMINALS TO ISOLATED STUD.
- (9) TRIM CABLE TO 900MM. ADD TERMINAL 8348-01-000.
- (8) SUPPLIED WITH CHASSIS.
- (7) SEE WIRING INSTL-FRONT END FOR ADDITIONAL INFORMATION.
- (6) CLAMP 10497-02-000 AND SCREW G39-08-000.
- (5) CLAMP 83609-01-000 AND SCREW G39-08-000.
- (4) CLAMP 83610-01-000. SCREW G39-08-12B.
- (3) PLACE AROUND ENTIRE PERIMETER OF DOOR WITH SEAM AT TOP.

1. LEGEND: — WINNEBAGO; CABLE; - - - - - CHASSIS SUPPLIED WIRING.

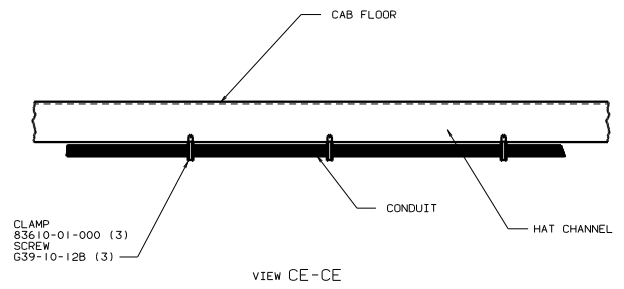
- (265) CODES/STANDARDS-CSA/CMVSS
- (21V) SOUND SYSTEM-DELUXE
- (1B) CODES STANDARDS/JSA
- (16M) FORD CHASSIS-20.500# GVWR

FOR ELECTRICAL TORQUE SPECIFICATIONS SEE DWG NO. 128783-01-000

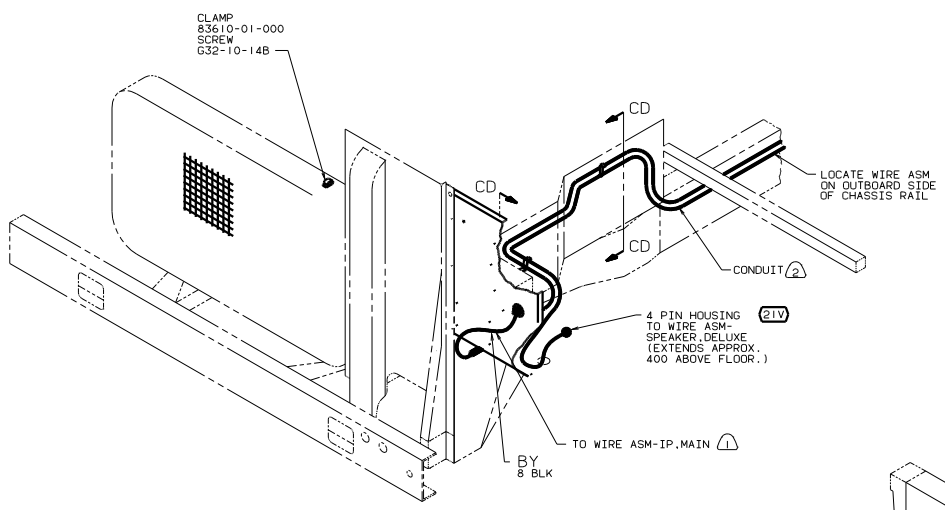
99 L36L (1B) (265) (21V) (16M)
 WIRING INSTL-CHASSIS(FORD)
 SHEET 2 OF 4



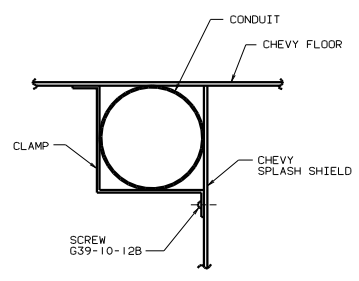
VIEW CB-CB



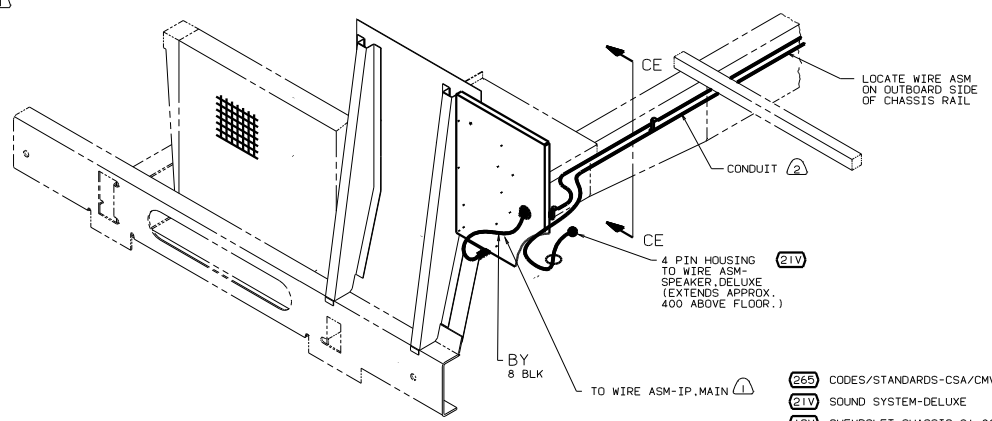
VIEW CE-CE



VIEW CA-CA (1CV)



VIEW CD-CD (2 PLCS)



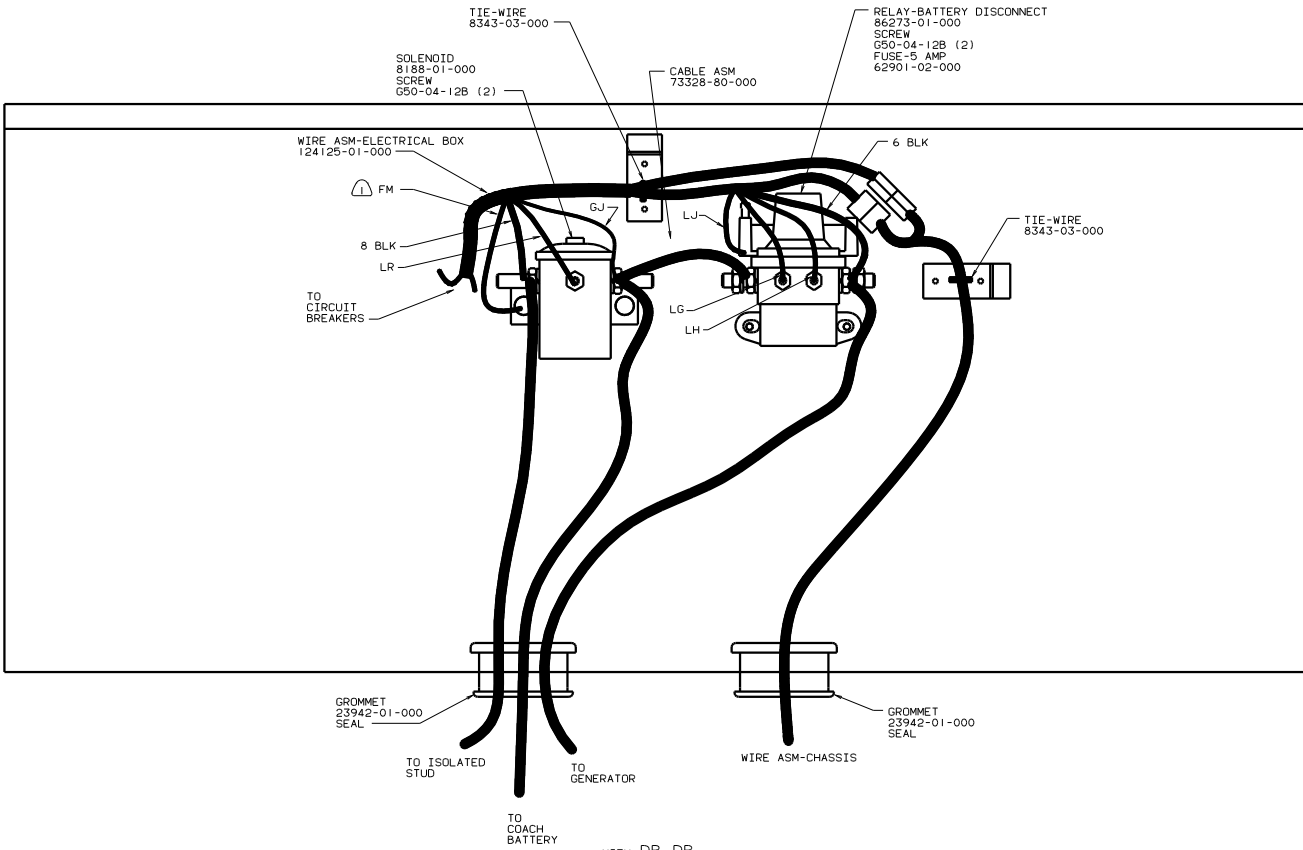
VIEW CC-CC (1M1)

- NOTES:
- ② COVER WITH CONDUIT 41953-10-000 AND 41953-11-000 AS REQUIRED.
 - ⚠ FOR ADDITIONAL INFORMATION SEE WIRING INSTALLATION FRONT END.

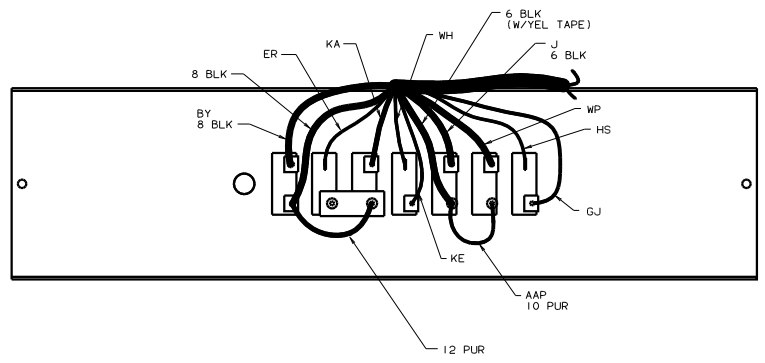
- (265) CODES/STANDARDS-CSA/CMVSS
- (21V) SOUND SYSTEM-DELUXE
- (1CV) CHEVROLET CHASSIS-21.000#
- (1B1) CODES STANDARDS/USA
- (16M) FORD CHASSIS-20.500# GVWR

FOR ELECTRICAL TORQUE SPECIFICATIONS SEE DWG NO. 128783-01-000

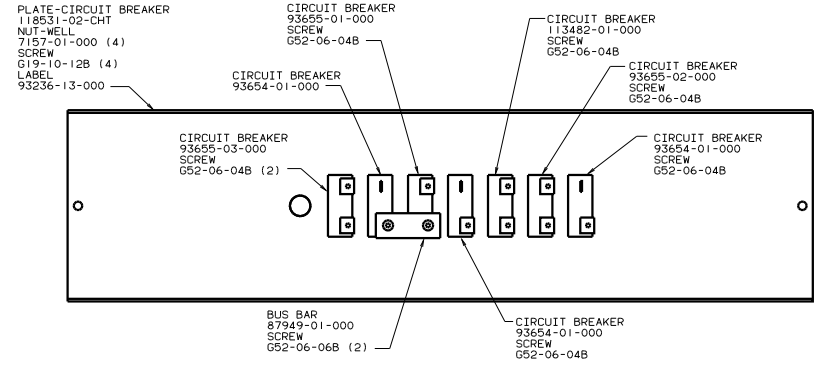
99 L36L (1B1) (265) (21V)	
TITLE	WIRING INSTL-CHASSIS
NO. OF SHEETS	4
SHEET NO.	3
DWG NO.	130650



VIEW DB-DB



VIEW DA-DA (WIRING)



VIEW DA-DA (HARDWARE)

NOTES: SECURE WITH SOLENOID MOUNTING SCREW.

FOR ELECTRICAL TORQUE SPECIFICATIONS SEE DWG NO. 128783-01-000

(265) CODES/STANDARDS-CSA/CMVSS
 (181) CODES STANDARDS/USA

99 L36L (181) (265)

TITLE: WIRING INSTL-CHASSIS	
NO. OF SHEETS: 4	SHEET: 4 OF 4
DATE: 11/01/05	REV: 1
130650	