



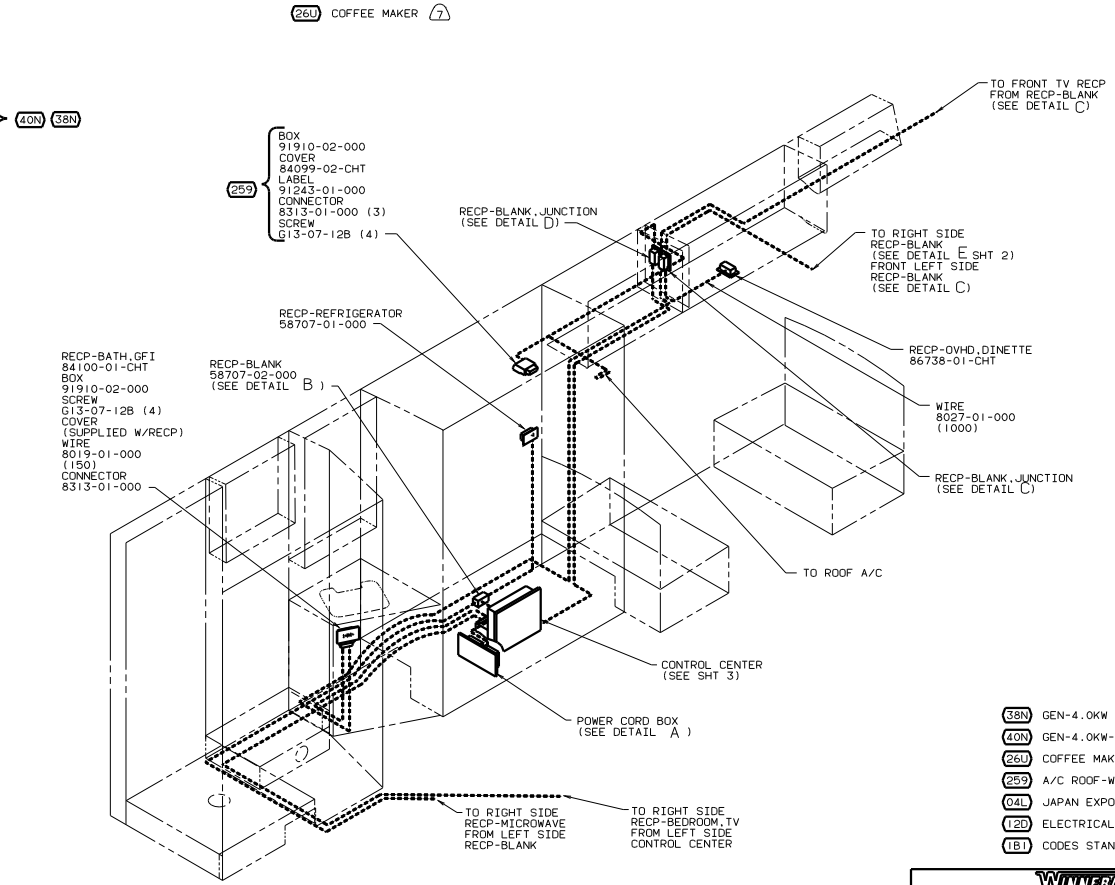
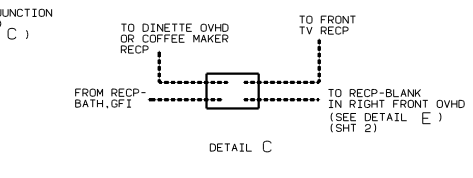
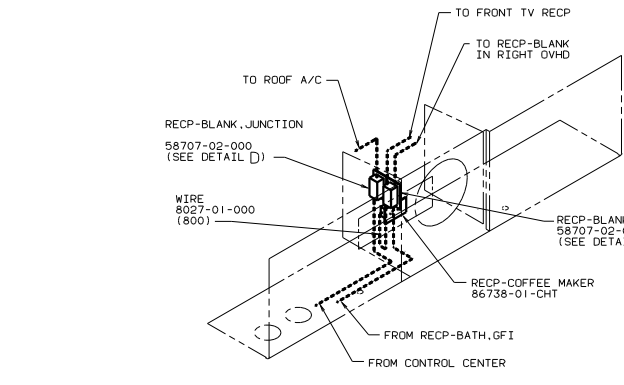
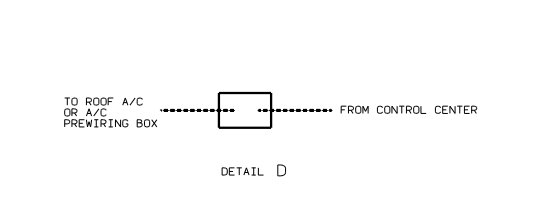
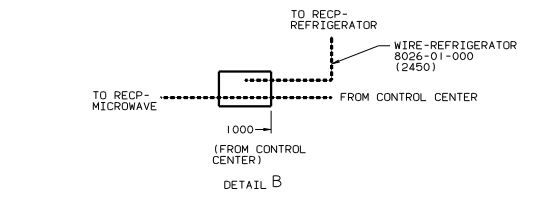
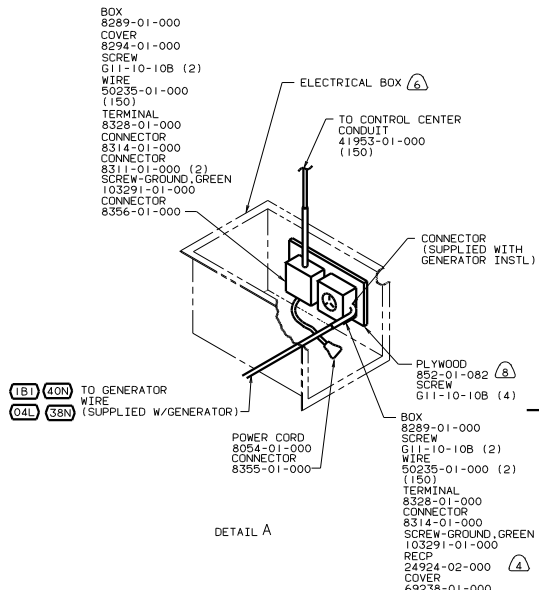
DANGER

Danger of electrical shock, burns or death. Always remove all power sources before attempting any repair, service or diagnostic work. Power can be present from shore power, generator, inverter or battery. All power sources must be disabled and secured before performing any service.



CAUTION

If you lack the skills, tools or equipment to perform diagnostic or repair work leave such work to an authorized Winnebago Industries dealer or other qualified shop.



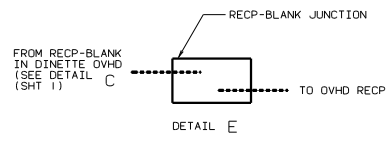
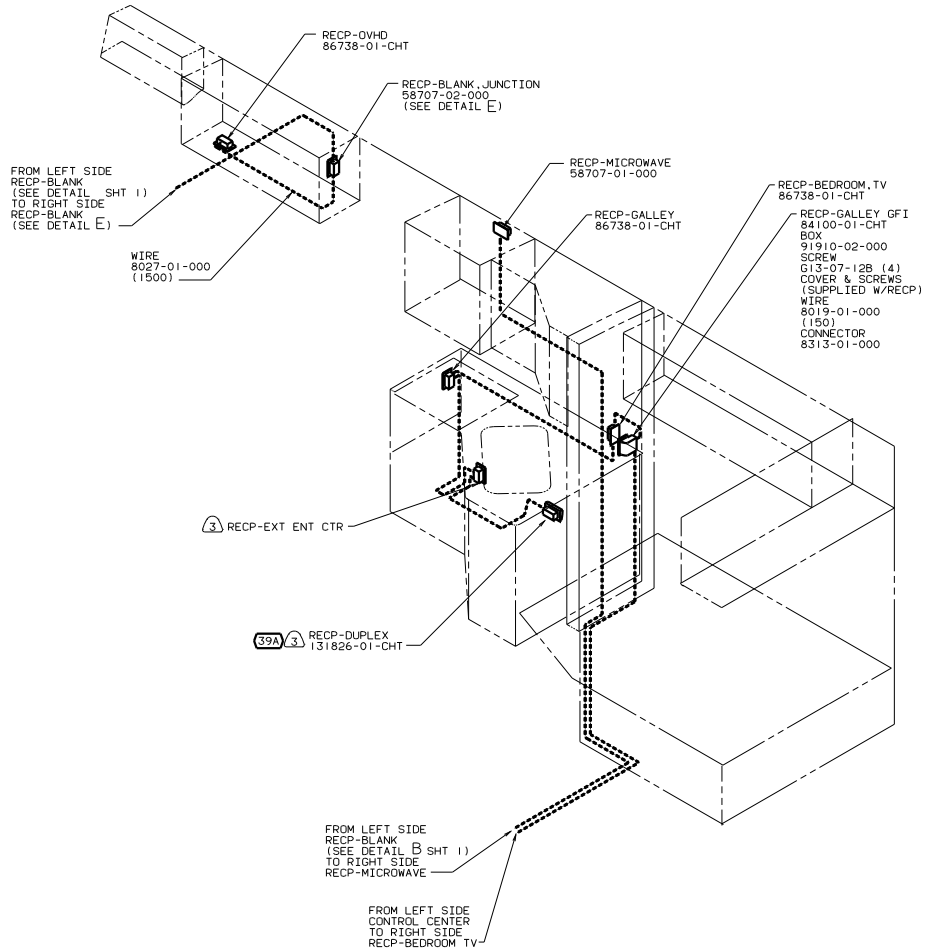
- (8) PAINT EXPOSED SURFACES BLACK WITH 106112-01-000.
- (7) 26U COFFEE MAKER NOT AVAILABLE FOR JAPAN.
- (6) SEE BODY INSTL-DOORS & COMPARTMENTS FOR ADDITIONAL INFORMATION.
- 5. SEAL ALL HOLES THROUGH FLOOR.
- (4) INSTALL RECEPTACLE WITH GROUND TOWARD OUTBOARD SIDE OF VEHICLE.
- 3. ALL GROUND WIRES TO BE COVERED WITH TUBING 8041-02-000.
- 2. ALL WIRES ARE TO BE CLAMPED WITH CLAMP 10497-05-000 WITHIN 200 OF OUTLET BOXES, USE SCREW 667-10-12B.
- 1. ALL WIRE TO BE CLAMPED WITH CLAMP 10495-01-000 OR CLIP 80734-02-000 EVERY 600, USE SCREW 667-10-12B UNLESS OTHERWISE SPECIFIED.

- (40N) (38N) BOX 8289-01-000
 SCREW G11-10-10B (2)
 WIRE 50235-01-000 (2)
 TERMINAL 8328-01-000
 CONNECTOR 8314-01-000
 SCREW-GROUND, GREEN 103291-01-000
 RECP 24924-02-000
 COVER 69238-01-000
- (26U) COFFEE MAKER (7)
- (259) BOX 91910-02-000
 COVER 84099-02-CHT
 LABEL 91243-01-000
 CONNECTOR 8313-01-000 (3)
 SCREW G13-07-12B (4)

- (38N) GEN-4.0KW ONAN GAS-JAPAN
- (40N) GEN-4.0KW-ONAN-GAS-MICROLITE
- (26U) COFFEE MAKER
- (259) A/C ROOF-WITHOUT
- (04L) JAPAN EXPORT PACKAGE
- (12D) ELECTRICAL SYSTEM 30 AMP
- (1B1) CODES STANDARDS/JUSA

FOR ELECTRICAL SPECIFICATIONS SEE DWG NO. 128783-01-000

WINNEBAGO		99 F25F
DATE	UNSPECIFIED TOLERANCES ARE:	MATERIAL
DATE	WHOLE DIM (1)	
DATE	ONE-PLACE (1X.01)	
DATE	TWO-PLACE (1X.005)	
DATE	ANGLE	
DATE	THRU HOLE PROJECTION	
DATE	DATE	130642
DATE	DATE	130642
DATE	DATE	130642
DATE	DATE	130642



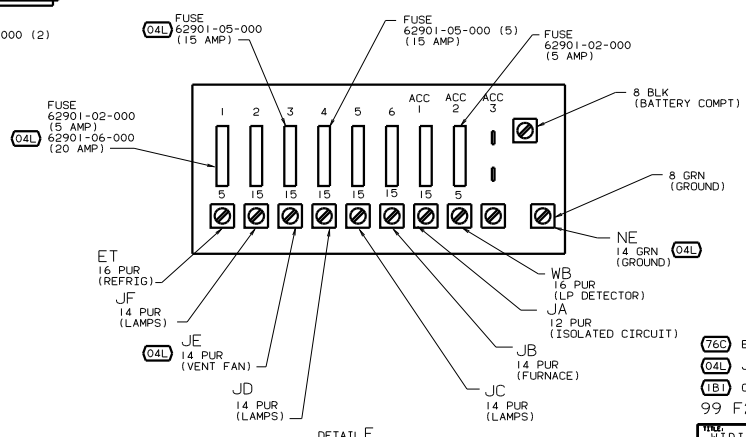
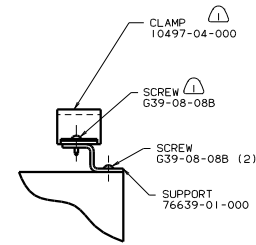
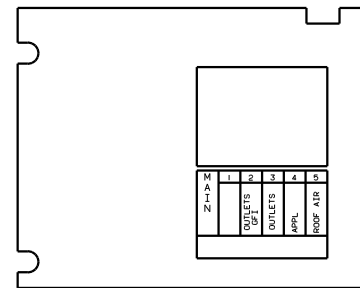
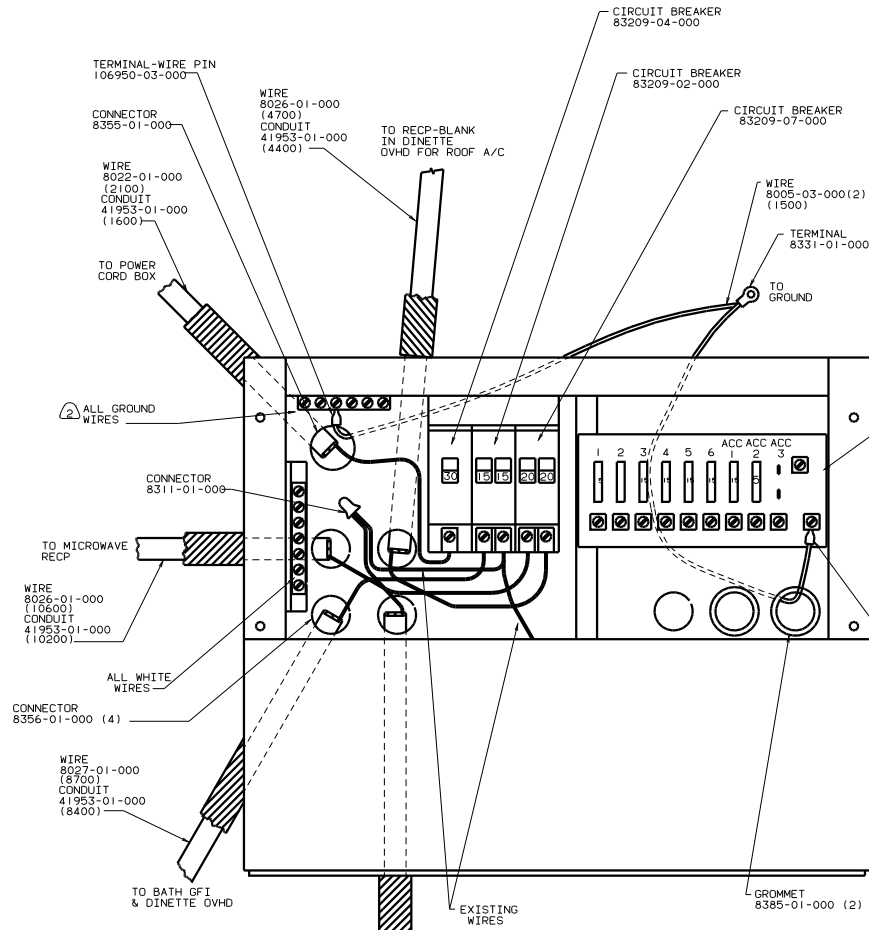
- 3 SEE ENTERTAINMENT CENTER INSTL FOR ADDITIONAL INFORMATION.
2. ALL WIRES TO BE CLAMPED WITH CLAMP 10497-05-000 WITHINS 200 OF OUTLET BOXES. USE SCREW G67-10-12B.
1. ALL WIRES TO BE CLAMPED WITH CLAMP 10495-01-000 OR CLIP 80734-02-000 EVERY 600. USE SCREW G67-10-12B UNLESS OTHERWISE SPECIFIED.

FOR ELECTRICAL TORQUE SPECIFICATIONS SEE DWG NO. 128783-01-000

- 39A EXT RECEPTACLE DPLX 120VAC
- 64L JAPAN EXPORT PACKAGE
- 12D ELECTRICAL SYSTEM 30 AMP
- 1B1 CODES STANDARDS/USA

99 F25F 1B1

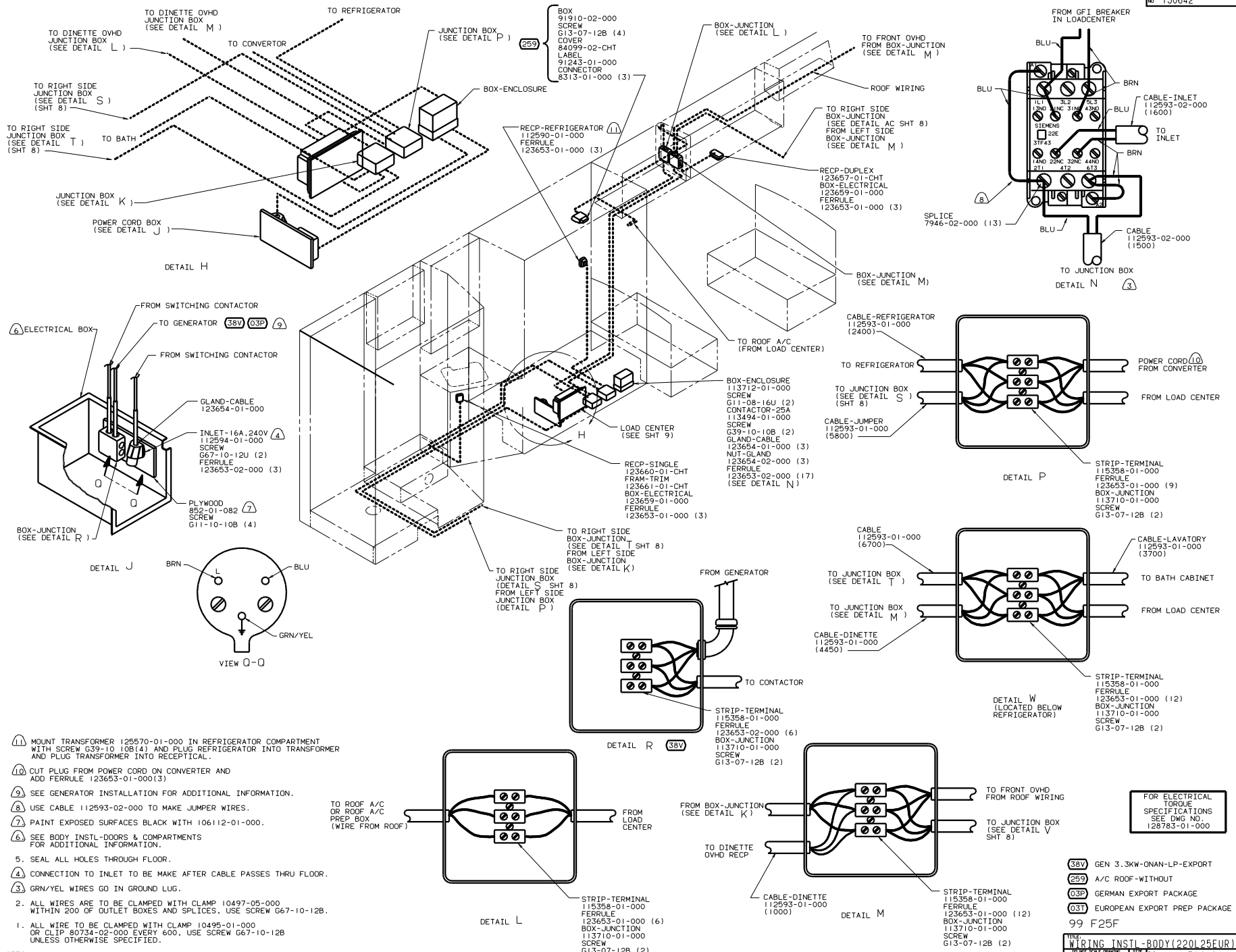
TITLE		DRAWING NO.	
WIRING INSTL-BODY (110R30US)		130642	
DATE	BY	DATE	BY
10/21/04	116	10/21/04	116
SHEET 2 OF 10		PAGE 16	



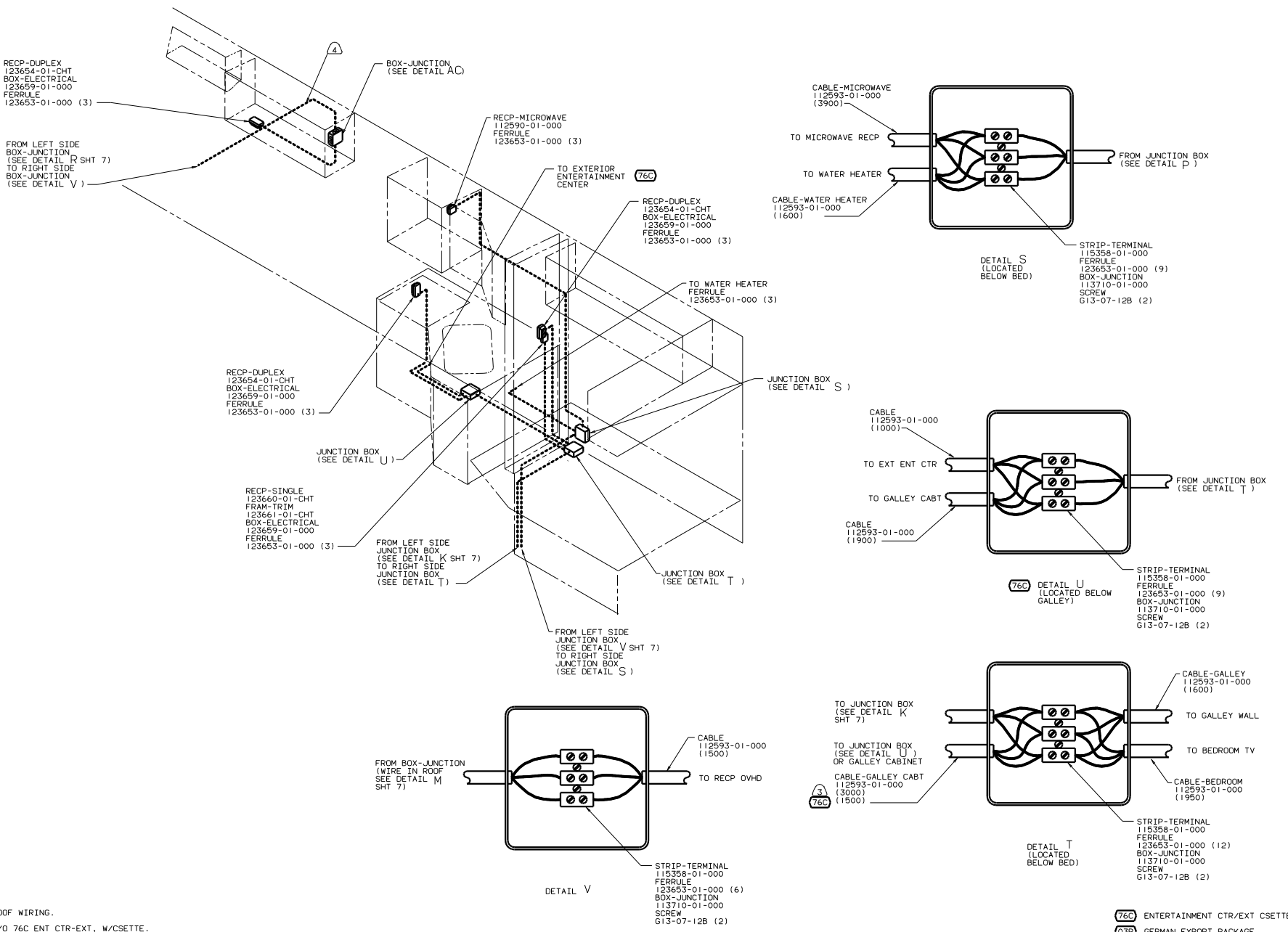
FOR ELECTRICAL TORQUE SPECIFICATIONS SEE DWG NO. 128783-01-000

- 76C ENTERTAINMENT CTR/EXT CSETTE
- 04L JAPAN EXPORT PACKAGE
- 1B1 CODES STANDARDS/USA
- 99 F25F 1B1

- 3 W/O 76C ENT CTR-EXT W/CSETTE.
- 2 ALL GROUND WIRES TO BE COVERED WITH TUBING 8041-02-000.
- 1 FASTEN ALL WIRES TO SUPPORT, USE ONE SCREW PER CLAMP.



- (11) MOUNT TRANSFORMER 128570-01-000 IN REFRIGERATOR COMPARTMENT WITH SCREW G39-10-10B(4) AND PLUG REFRIGERATOR INTO TRANSFORMER AND PLUG TRANSFORMER INTO RECEPTICAL.
- (10) CUT PLUG FROM POWER CORD ON CONVERTER AND ADD FERRULE 123653-01-000(3)
- (9) SEE GENERATOR INSTALLATION FOR ADDITIONAL INFORMATION.
- (8) USE CABLE 112593-02-000 TO MAKE JUMPER WIRES.
- (7) PAINT EXPOSED SURFACES BLACK WITH 106112-01-000.
- (6) SEE BODY INSTL-DOORS & COMPARTMENTS FOR ADDITIONAL INFORMATION.
- 5. SEAL ALL HOLES THROUGH FLOOR.
- (4) CONNECTION TO INLET TO BE MADE AFTER CABLE PASSES THRU FLOOR.
- (3) GRN/YEL WIRES GO IN GROUND LUG.
- 2. ALL WIRES ARE TO BE CLAMPED WITH CLAMP 10497-05-000 WITHIN 200 OF OUTLET BOXES AND SPLICES. USE SCREW G67-10-12B.
- 1. ALL WIRE TO BE CLAMPED WITH CLAMP 10495-01-000 OR CLIP 80734-02-000 EVERY 600. USE SCREW G67-10-12B UNLESS OTHERWISE SPECIFIED.



- 4) ROOF WIRING.
- 3) W/O 76C ENT CTR-EXT. W/CSETTE.
- 2. ALL WIRES ARE TO BE CLAMPED WITH CLAMP 10497-05-000 WITHIN 200 OF OUTLET BOXES AND SPLICES. USE SCREW G67-10-12B.
- 1. ALL WIRE TO BE CLAMPED WITH CLAMP 10495-01-000 OR CLIP 80734-02-000 EVERY 600. USE SCREW G67-10-12B UNLESS OTHERWISE SPECIFIED.

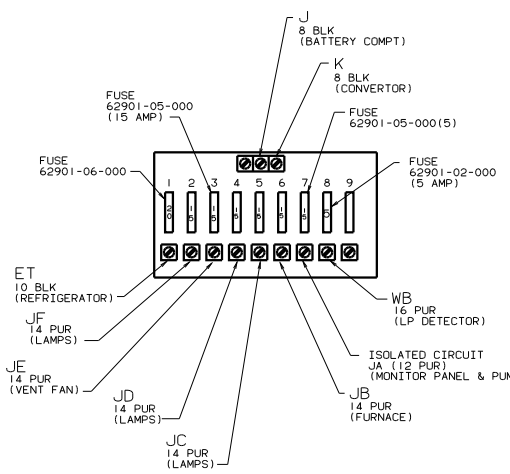
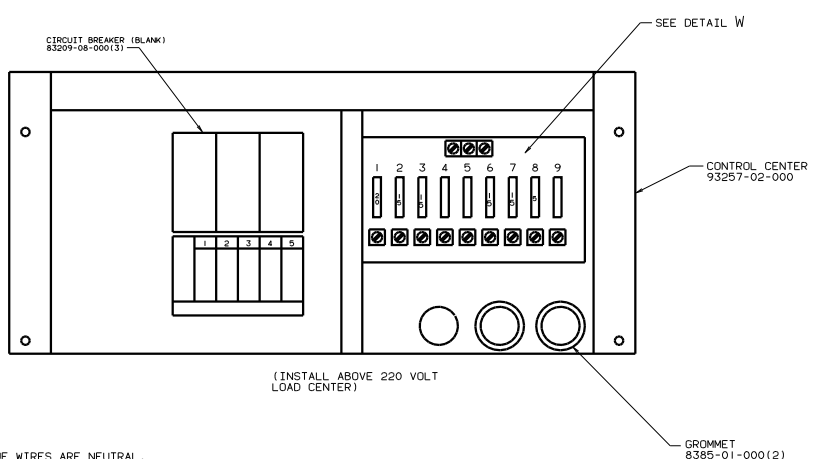
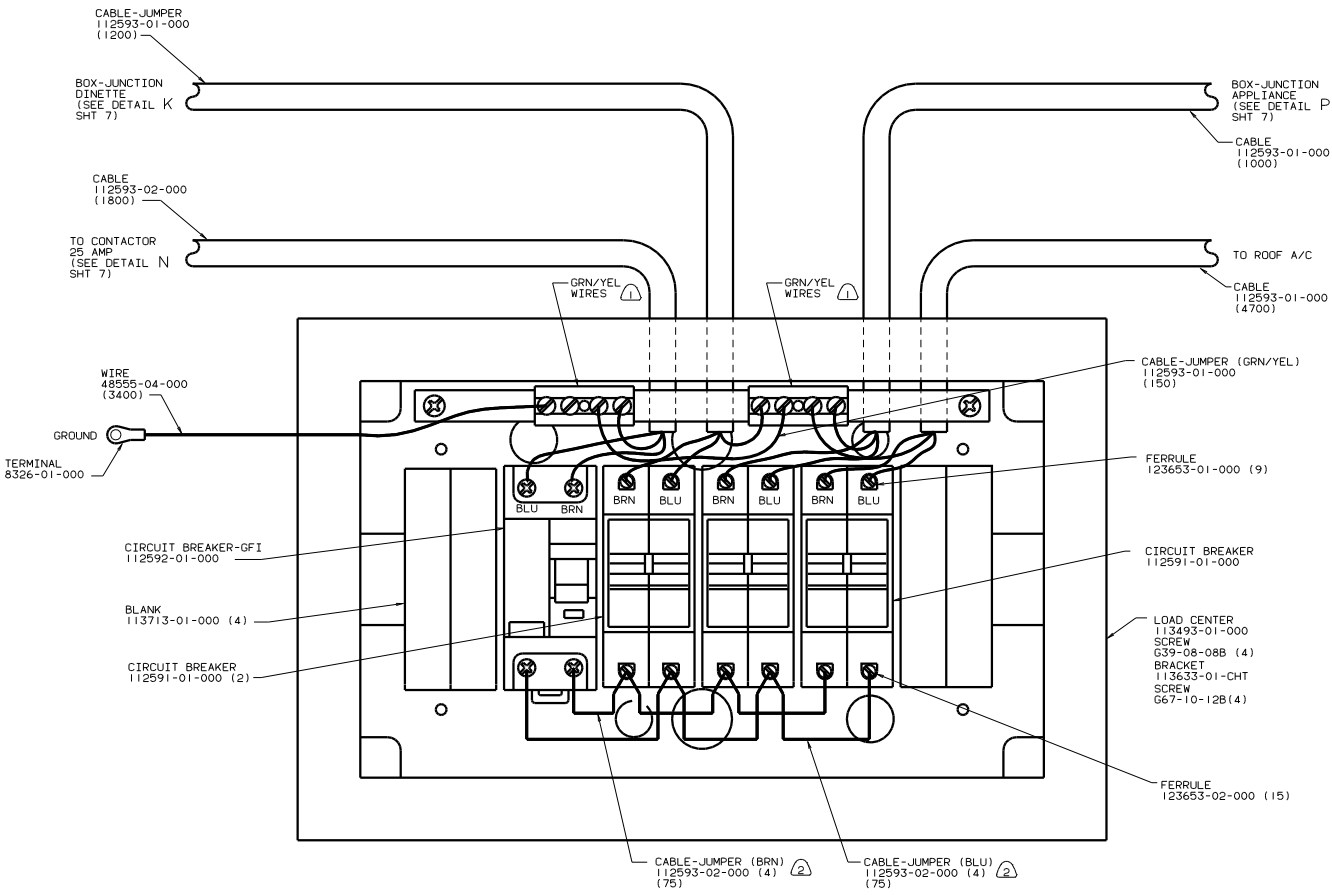
NOTES:

- 76C ENTERTAINMENT CTR/EXT CSETTE
- 03P GERMAN EXPORT PACKAGE
- 03T EUROPEAN EXPORT PREP PACKAGE

99 F25F

FOR ELECTRICAL TORQUE SPECIFICATIONS SEE DWG NO. 128783-01-000

WIRING INSTL-BODY(220R25EUR)	130642
100% SCALE	1 of 1
SHEET 5 OF 10	



DETAIL W

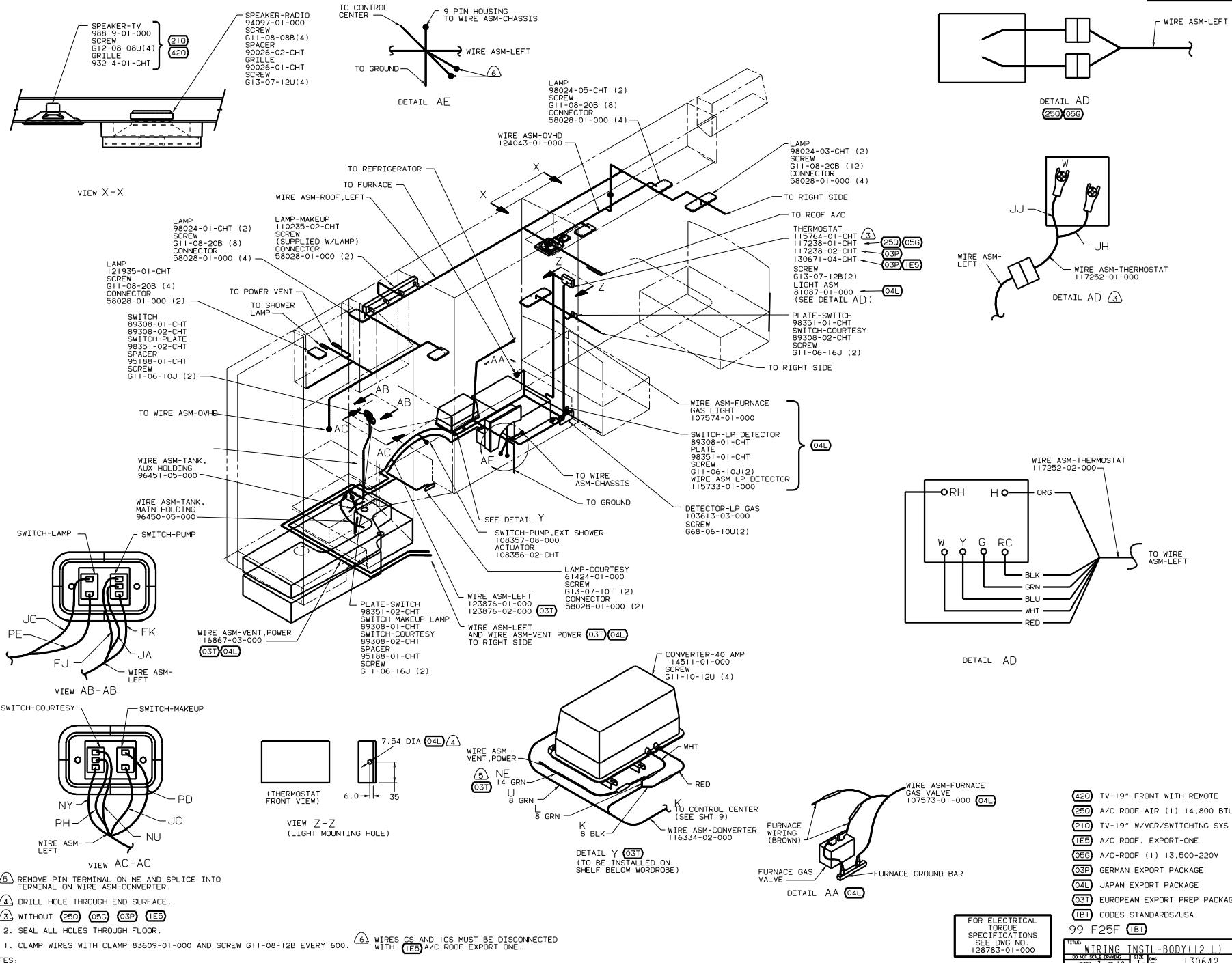
FOR ELECTRICAL TORQUE SPECIFICATIONS SEE DWG NO. 128783-01-000

GERMAN EXPORT PACKAGE (03P)
EUROPEAN EXPORT PREP PACKAGE (03T)
99 F25F

FILE: WIRING INSTL-BODY(25 LC EUR)
SHEET 6 OF 10

130642

Ⓜ BROWN WIRES ARE LINELOAD. BLUE WIRES ARE NEUTRAL.
Ⓛ ALL GRN/YEL WIRES GO TO GROUND BAR.



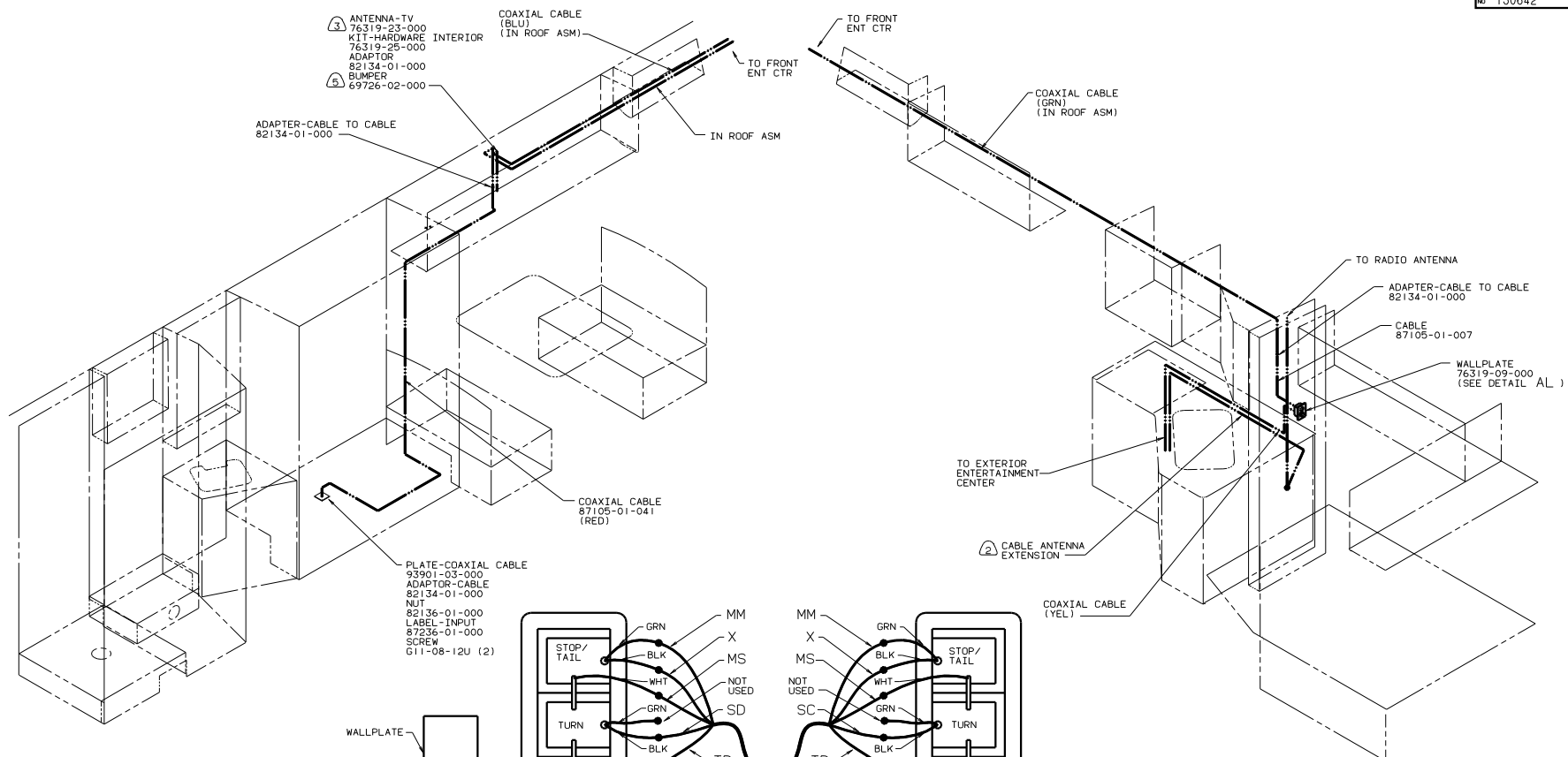
1. CLAMP WIRES WITH CLAMP 83609-01-000 AND SCREW G11-08-12B EVERY 600.
2. SEAL ALL HOLES THROUGH FLOOR.
3. WITHOUT (250) (05G) (03P) (1E5)
4. DRILL HOLE THROUGH END SURFACE.
5. REMOVE PIN TERMINAL ON NE AND SPLICE INTO TERMINAL ON WIRE ASM-CONVERTER.

WIRES CS AND ICS MUST BE DISCONNECTED WITH (1E5) A/C ROOF EXPORT ONE.

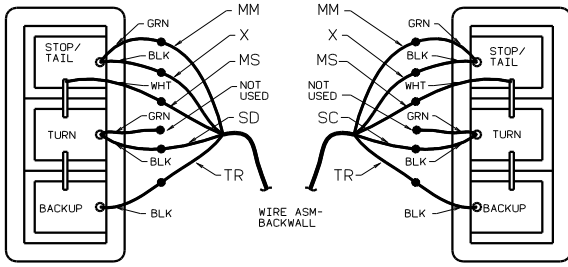
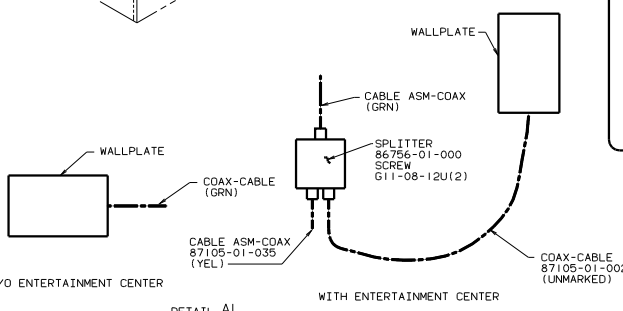
FOR ELECTRICAL TORQUE SPECIFICATIONS SEE DWG NO. 128763-01-000

(420)	TV-19" FRONT WITH REMOTE
(250)	A/C ROOF AIR (1) 14,800 BTU
(210)	TV-19" W/VCR/SWITCHING SYS
(1E5)	A/C ROOF, EXPORT-ONE
(05G)	A/C-ROOF (1) 13,500-220V
(03P)	GERMAN EXPORT PACKAGE
(04L)	JAPAN EXPORT PACKAGE
(031)	EUROPEAN EXPORT PREP PACKAGE
(1B1)	CODES STANDARDS/USA
(1B1)	99 F25F
TITLE: WIRING INSTL-BODY(12 L)	
DWG NO. 130642	
SHEET 7 OF 10	

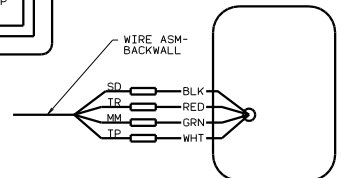
- 3 ANTENNA-TV 76319-23-000
KIT-HARDWARE 76319-25-000
ADAPTOR 82134-01-000
BUMPER 69726-02-000
- 5 ADAPTER-CABLE TO CABLE 82134-01-000



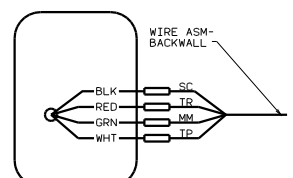
- PLATE-COAXIAL CABLE 93901-03-000
ADAPTOR-CABLE 82134-01-000
NUT 82136-01-000
LABEL-INPUT 87236-01-000
SCREW G11-08-12U (2)



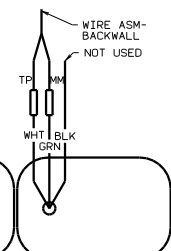
DETAIL AT (SHOWN FROM REAR VIEW) 04L



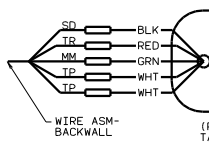
(REAR VIEW OF LEFT TAILLAMP SHOWING WIRING)



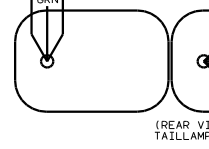
(REAR VIEW OF RIGHT TAILLAMP SHOWING WIRING)



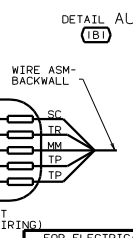
DETAIL AV 1B1



(REAR VIEW OF LEFT TAILLAMP SHOWING WIRING)



(REAR VIEW OF RIGHT TAILLAMP SHOWING WIRING)



DETAIL AU 1B1

- NOTES:
1. CLAMP WIRES WITH CLAMP 83609-01-000 AND SCREW G11-08-12B EVERY 600.
 2. USE WITH EXTERIOR ENTERTAINMENT CENTER. TAPE TOGETHER WITH TAPE 8363-1-000.
 3. SEE DRAWING 76319-01-000 FOR INSTALLATION OF TELEVISION ANTENNA.
 4. SEAL ALL HOLES THROUGH FLOOR.
 5. ADD RUBBER BUMPER UNDER EACH END OF ANTENNA WHEN IN DOWN POSITION WHICH MAY COME IN CONTACT WITH ROOF.

04L JAPAN EXPORT PACKAGE
 03T EUROPEAN EXPORT PREP PACKAGE
 1B1 CODES STANDARDS/USA
 99 F25F 1B1
 FOR ELECTRICAL TORQUE SPECIFICATIONS SEE DWG NO 128783-01-000
 TITLE: WIRING INSTL-BODY(COAX)
 SHEET 9 OF 10 130642

