



**DANGER**

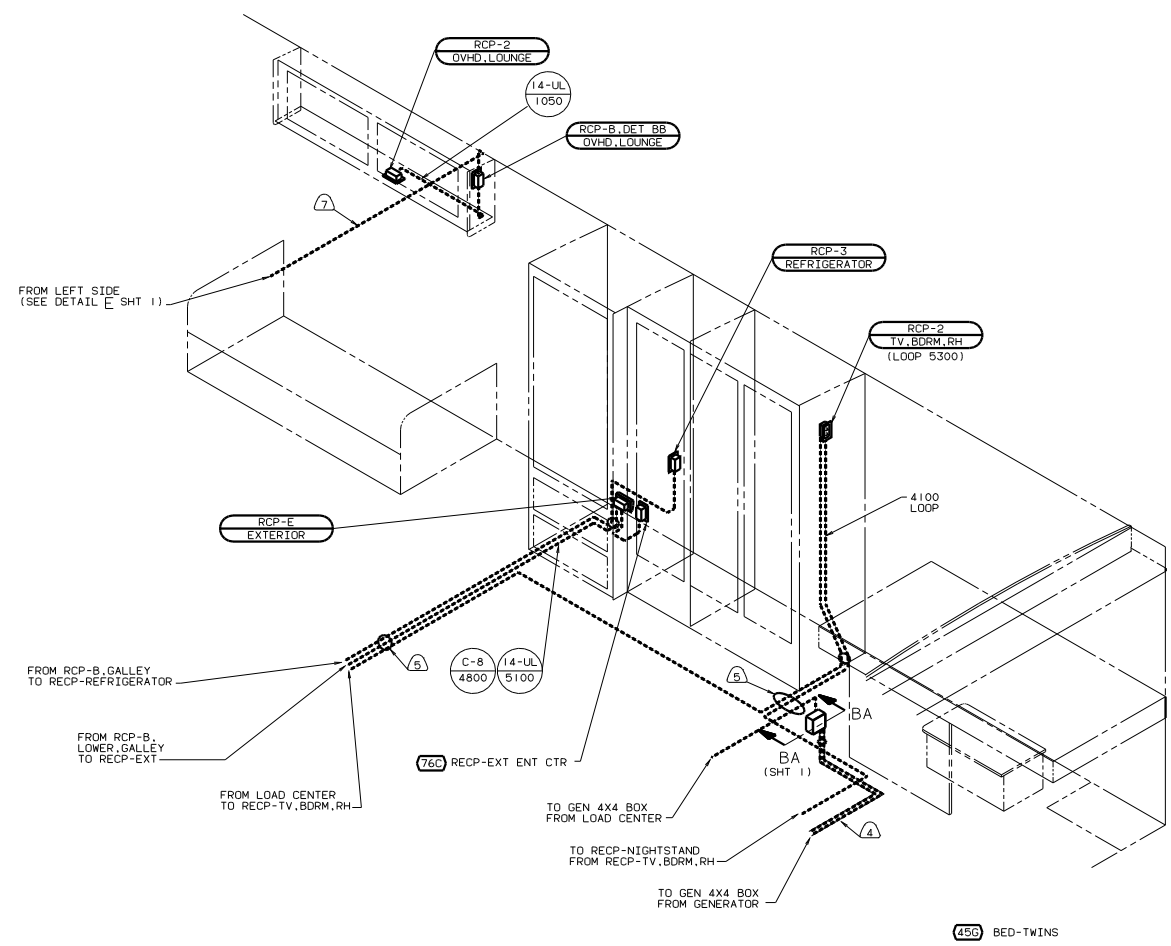
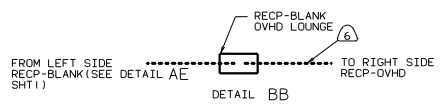
**Danger of electrical shock, burns or death.** Always remove all power sources before attempting any repair, service or diagnostic work. Power can be present from shore power, generator, inverter or battery. All power sources must be disabled and secured before performing any service.



**CAUTION**

If you lack the skills, tools or equipment to perform diagnostic or repair work leave such work to an authorized Winnebago Industries dealer or other qualified shop.





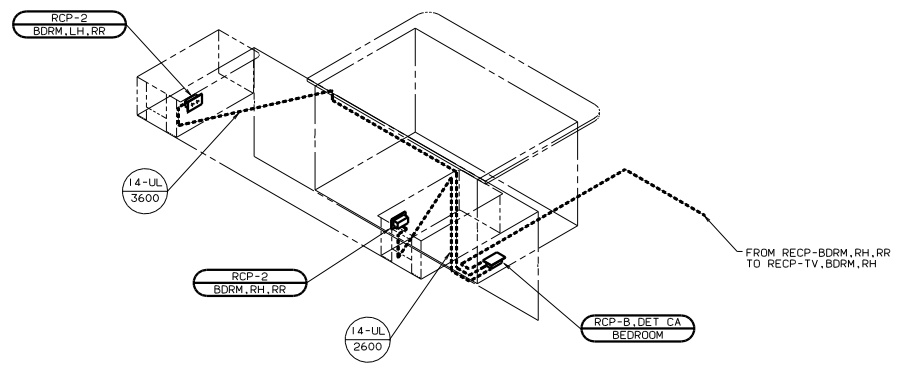
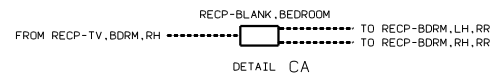
- 7 WIRE ROUTED IN ROOF.
  - 6 SEE GENERATOR INSTL FOR ADDITIONAL INFO.
  - 5 WIRE ROUTED BELOW FLOOR.
  - 4 WIRE ROUTED BELOW LOWER FLOOR.
3. ALL GROUND WIRES TO BE COVERED WITH TUBING 8041-02-000.
2. ALL WIRES ARE TO BE CLAMPED WITH CLAMP 10497-05-000 WITHIN 200 OF OUTLET BOXES AND SPLICES. USE SCREW G67-10-12B.
1. ALL WIRE TO BE CLAMPED WITH CLAMP 10495-01-000 OR CLIP 80734-01-000 EVERY 600. USE SCREW G67-10-12B UNLESS OTHERWISE SPECIFIED.

- 76C ENTERTAINMENT CTR/EXT CSETTE
- 45C BED-TWINS
- 1B1 CODES STANDARDS/USA
- 120 ELECTRICAL SYSTEM 30 AMP

FOR ELECTRICAL TORQUE SPECIFICATIONS SEE DWG NO. 126783-01-000

FOR ELECTRICAL CALLOUTS SEE DWG NO. 121339-01-000

99 F30N (1B1) (120)  
 WIRING INSTL-BODY (110R30US)  
 SHEET 2 OF 13  
 130607



3. WIRE ROUTED BELOW FLOOR.
2. ALL WIRES ARE TO BE CLAMPED WITH CLAMP 10497-05-000 WITHIN 200 OF OUTLET BOXES AND SPLICES. USE SCREW G67-10-12B.
1. ALL WIRE TO BE CLAMPED WITH CLAMP 10495-01-000 OR CLIP 80734-01-000 EVERY 600. USE SCREW G67-10-12B UNLESS OTHERWISE SPECIFIED.

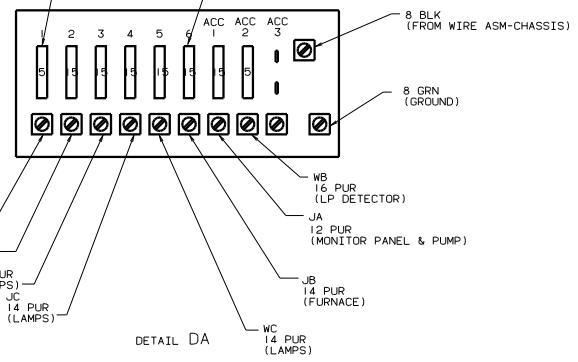
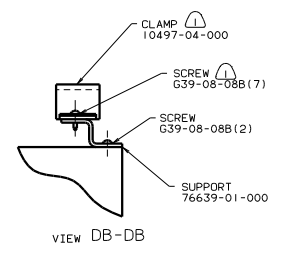
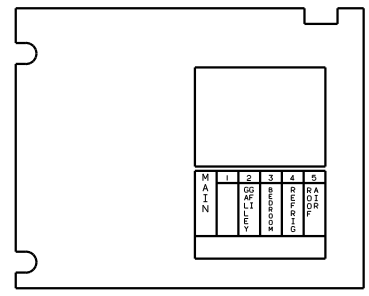
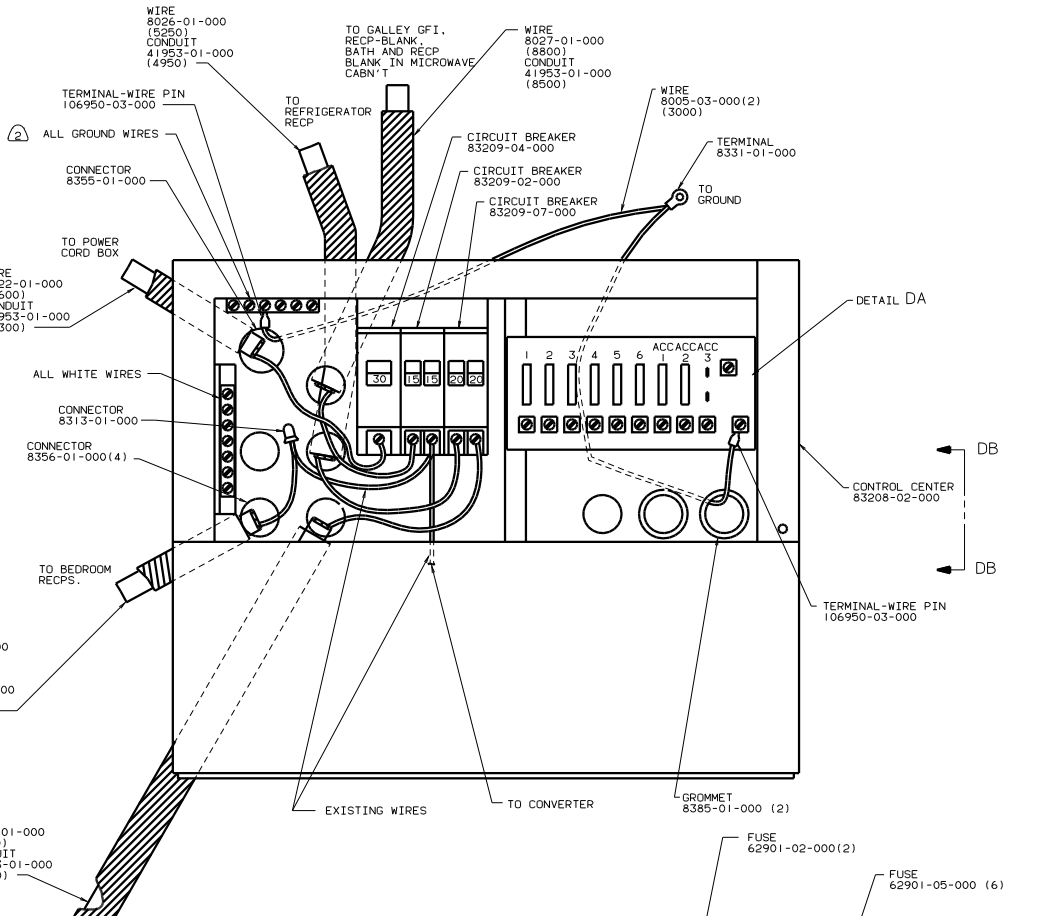
FOR ELECTRICAL TORQUE SPECIFICATIONS SEE DWG NO. 128783-01-000

FOR ELECTRICAL CALLOUTS SEE DWG NO. 121339-01-000

99 F30N (1B1) (12D) (49X)

FILE: WIRING INSTL-BODY (1 LOOB) WALL  
 SHEET 3 OF 13

DWG NO. 130607

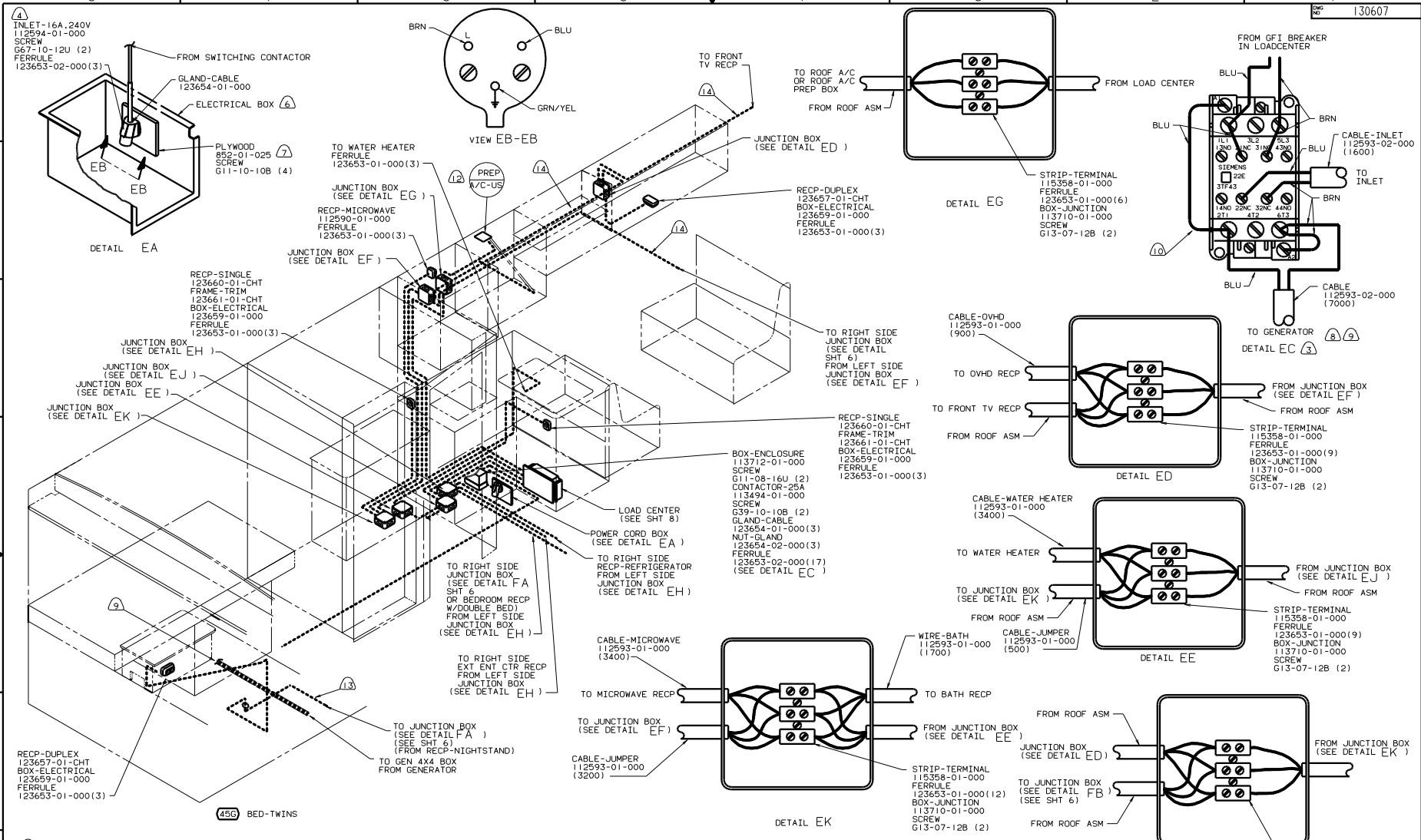


- 49X WIRE 8027-01-000 (19070)
- 45G CONDUIT 41953-01-000 (18500)
- 49X WIRE 8027-01-000 (18500)
- 45G CONDUIT 41953-01-000 (17100)

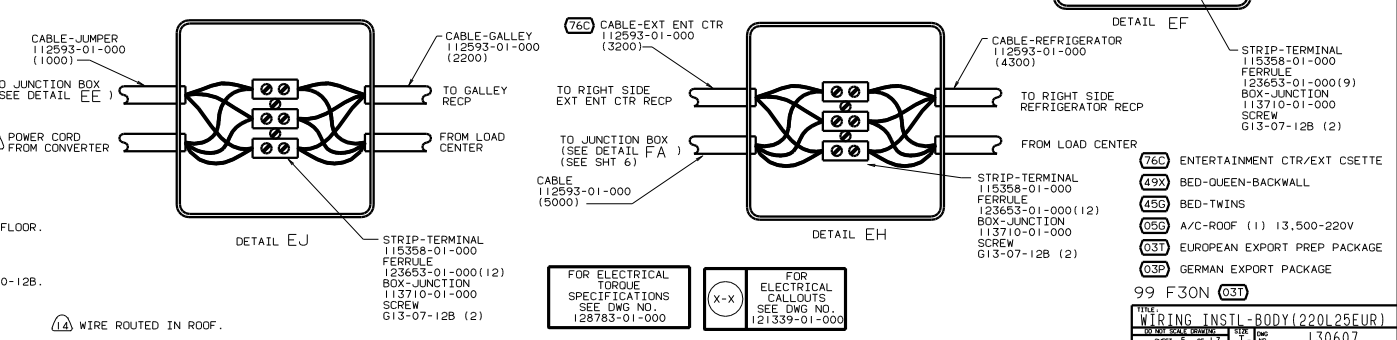
(2) ALL GROUND WIRES TO BE COVERED WITH TUBING 8041-02-000.  
 (1) FASTEN ALL WIRES TO SUPPORT. USE WITH ONE SCREW PER CLAMP.

FOR ELECTRICAL TORQUE SPECIFICATIONS SEE DWG NO. 128783-01-000

49X	BED-QUEEN-BACKWALL
45G	BED-TWINS
1B1	CODES STANDARDS/USA
12B	ELECTRICAL SYSTEM 30 AMP
99 F30N 1B1 12B	
TITLE: WIRING INSTL-BODY(30 CC US)	
SHEET 4 OF 13	
130607	



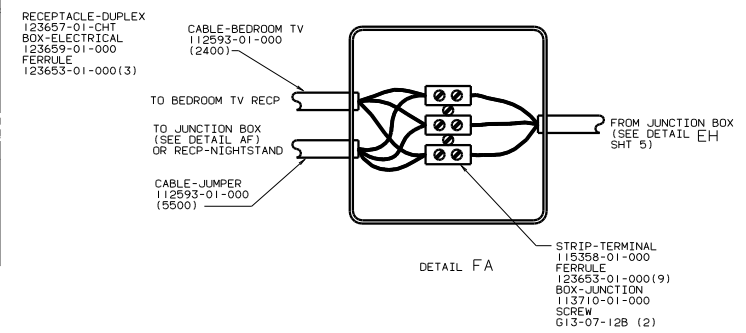
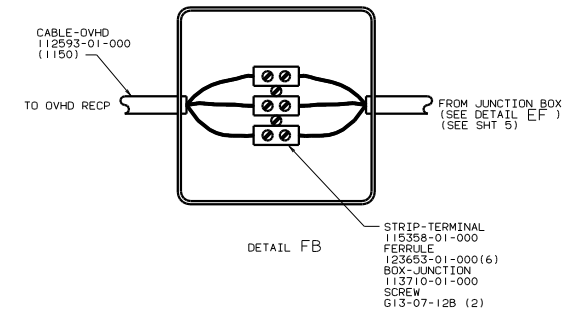
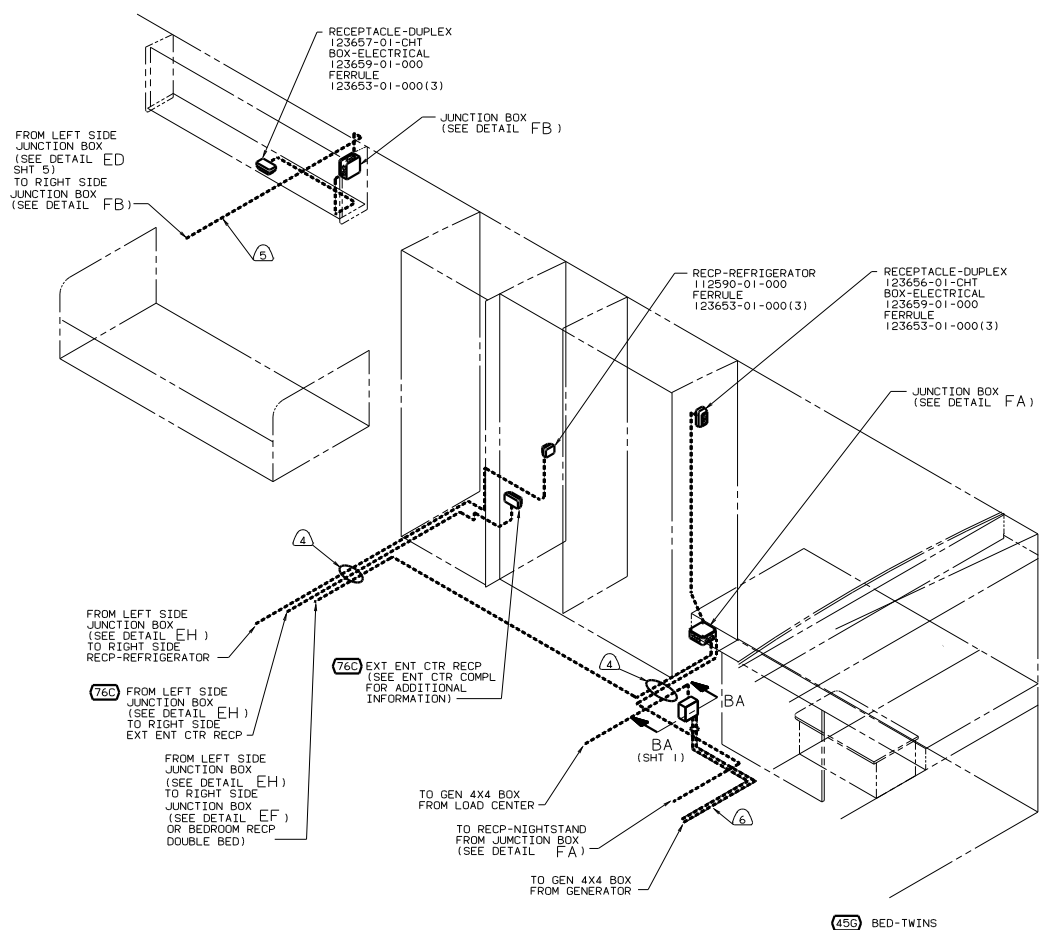
- ① INLET-16A, 240V  
112594-01-000  
SCREW  
G67-10-12U (2)  
FERRULE  
123653-02-000(3)
- ② ALL WIRES ARE TO BE CLAMPED WITH CLAMP 10495-01-000 WITHIN 200 OF OUTLET BOXES AND SPLICES. USE SCREW G67-10-12B.
- ③ GRN/YEL WIRES GO IN GROUND LUG.
- ④ CONNECTION TO INLET TO BE MAKE AFTER CABLE PASSES THRU FLOOR.
- ⑤ SEAL ALL HOLES THROUGH FLOOR.
- ⑥ SEE BODY INSTL-DOORS & COMPARTMENTS FOR ADDITIONAL INFORMATION.
- ⑦ PAINT EXPOSED SURFACES BLACK WITH 106112-01-000.
- ⑧ WITH GENERATOR ONLY.
- ⑨ SEE GENERATOR INSTALLATION FOR ADDITIONAL INFORMATION.
- ⑩ USE CABLE 112593-02-000 TO MAKE JUMPER WIRES.
- ⑪ CUT PLUG FROM POWER CORD ON CONVERTER AND ADD SPLICE 7946-02-000(3).
- ⑫ WITHOUT 056
- ⑬ WIRE ROUTED BELOW FLOOR.



FOR ELECTRICAL TORQUE SPECIFICATIONS SEE DWG NO. 128783-01-000

(X-X) FOR ELECTRICAL CALLOUTS SEE DWG NO. 121339-01-000

⑦65	ENTERTAINMENT CTR/EXT CSETTE
④9X	BED-QUEEN-BACKWALL
④5B	BED-TWINS
①56	A/C-ROOF (1) 13,500-220V
①3T	EUROPEAN EXPORT PREP PACKAGE
①3D	GERMAN EXPORT PACKAGE
99 F30N ①3T	
TITLE: WIRING INSTL-BODY(220L 25EUR)	
DWG NO. 130607	
SHEET 5 OF 13	



- (6) WIRE ROUTED BELOW LOWER FLOOR.
- (5) WIRE ROUTED IN ROOF.
- (4) WIRE ROUTED BELOW FLOOR.

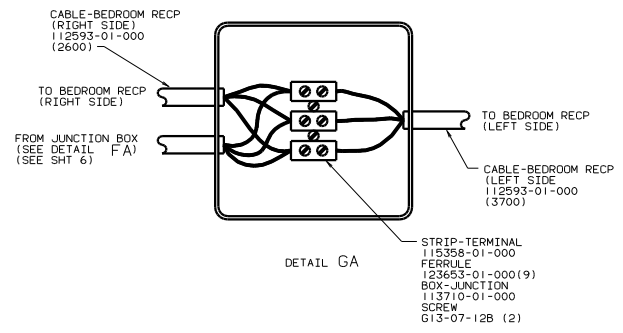
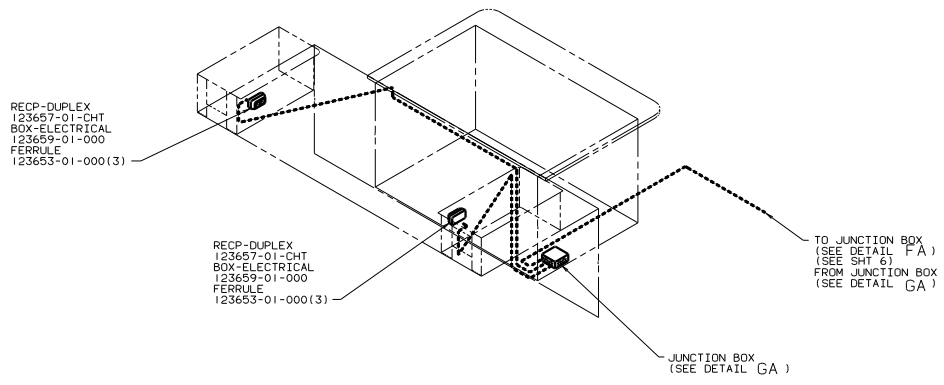
3. SEAL ALL HOLES THROUGH FLOOR.
2. ALL WIRES ARE TO BE CLAMPED WITH CLAMP 10497-05-000 WITHIN 200 OF OUTLET BOXES AND SPLICES. USE SCREW G67-10-12B.
1. ALL WIRES TO BE CLAMPED WITH CLAMP 10495-01-000 OR CLIP 80734-02-000 EVERY 600. USE SCREW G67-10-12B. UNLESS OTHERWISE SPECIFIED.

NOTES:

- (76C) ENTERTAINMENT CTR/EXT CSETTE
- (49X) BED-QUEEN-BACKWALL
- (45C) BED-TWINS
- (03T) EUROPEAN EXPORT PREP PACKAGE
- (03P) GERMAN EXPORT PACKAGE

FOR ELECTRICAL TORQUE SPECIFICATIONS SEE DWG NO. 128783-01-000

99 F30N (03T)  
**WIRING INSTL-BODY(220R25EUR)**  
 SHEET 6 OF 13



- 3. SEAL ALL HOLES THROUGH FLOOR.
- 2. ALL WIRES ARE TO BE CLAMPED WITH CLAMP 10497-05-000 WITHIN 200 OF OUTLET BOXES AND SPLICES. USE SCREW G67-10-12B.
- 1. ALL WIRES TO BE CLAMPED WITH CLAMP 10495-01-000 OR CLIP 80734-02-000 EVERY 600. USE SCREW G67-10-12B. UNLESS OTHERWISE SPECIFIED.

NOTES:

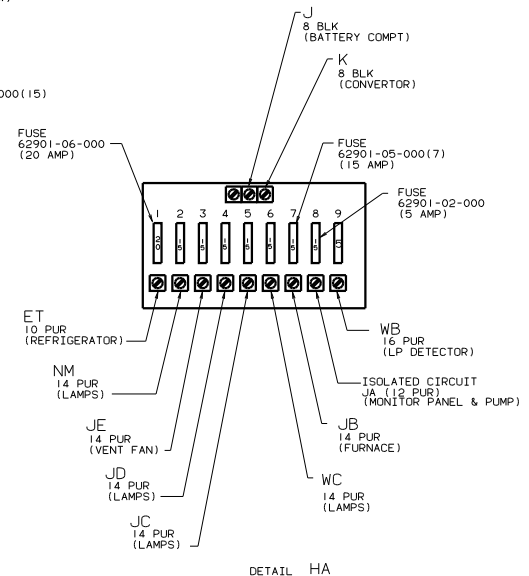
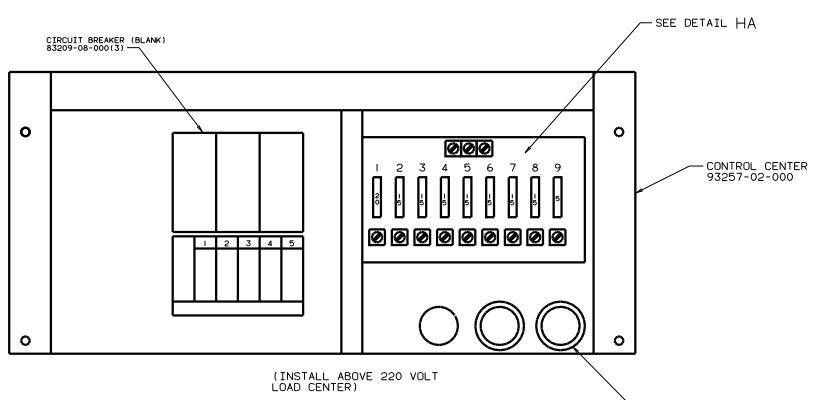
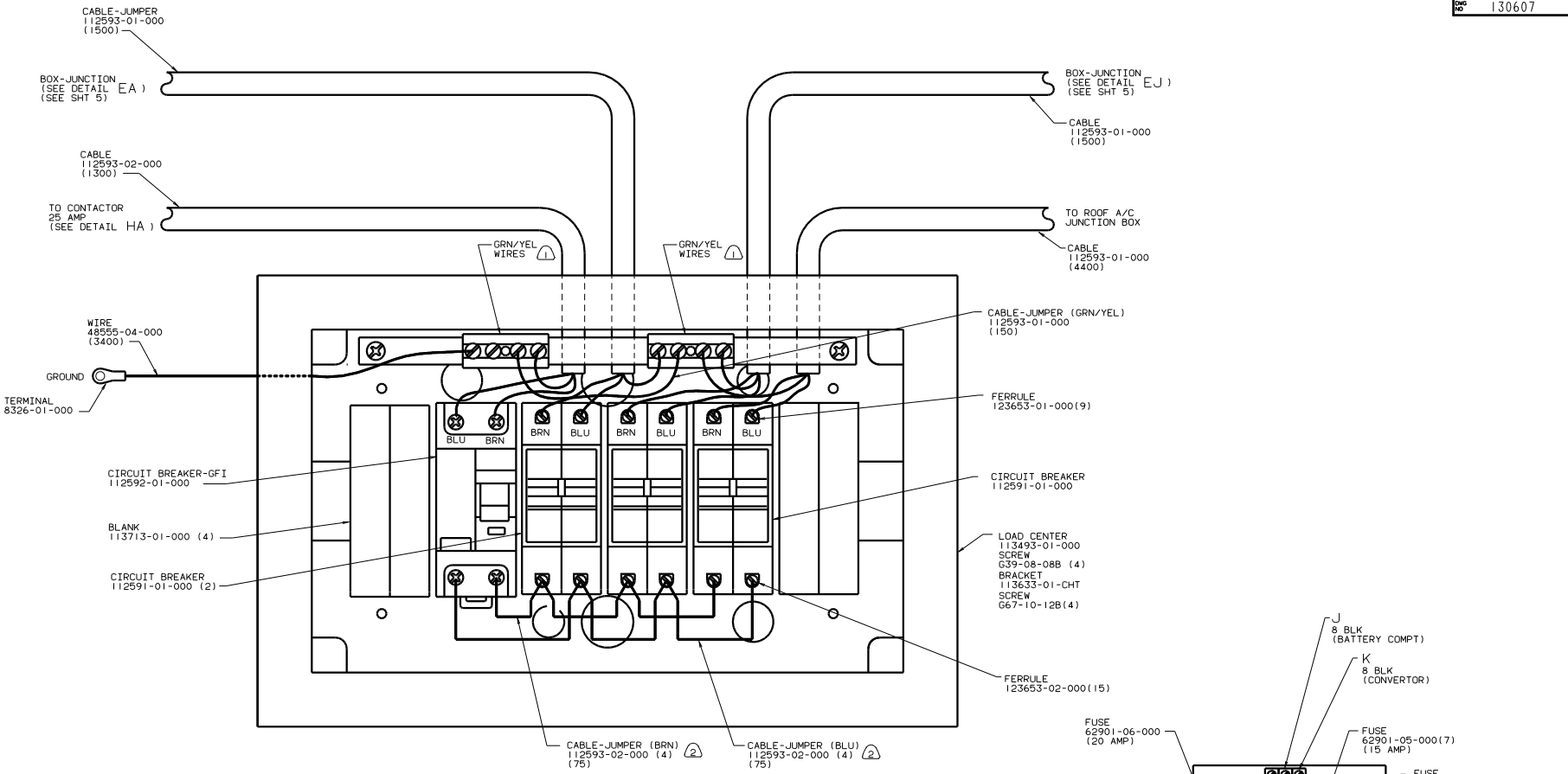
- (49X) BED-QUEEN-BACKWALL
- (03T) EUROPEAN EXPORT PREP PACKAGE
- (03P) GERMAN EXPORT PACKAGE

FOR ELECTRICAL TORQUE SPECIFICATIONS SEE DWG NO. 128783-01-000

99 F30N (03T)

TITLE		DRAWING NO.	
WIRING INSTL-BODY(220RB'WALL)		130607	
SHEET 7 OF 13		1 E	

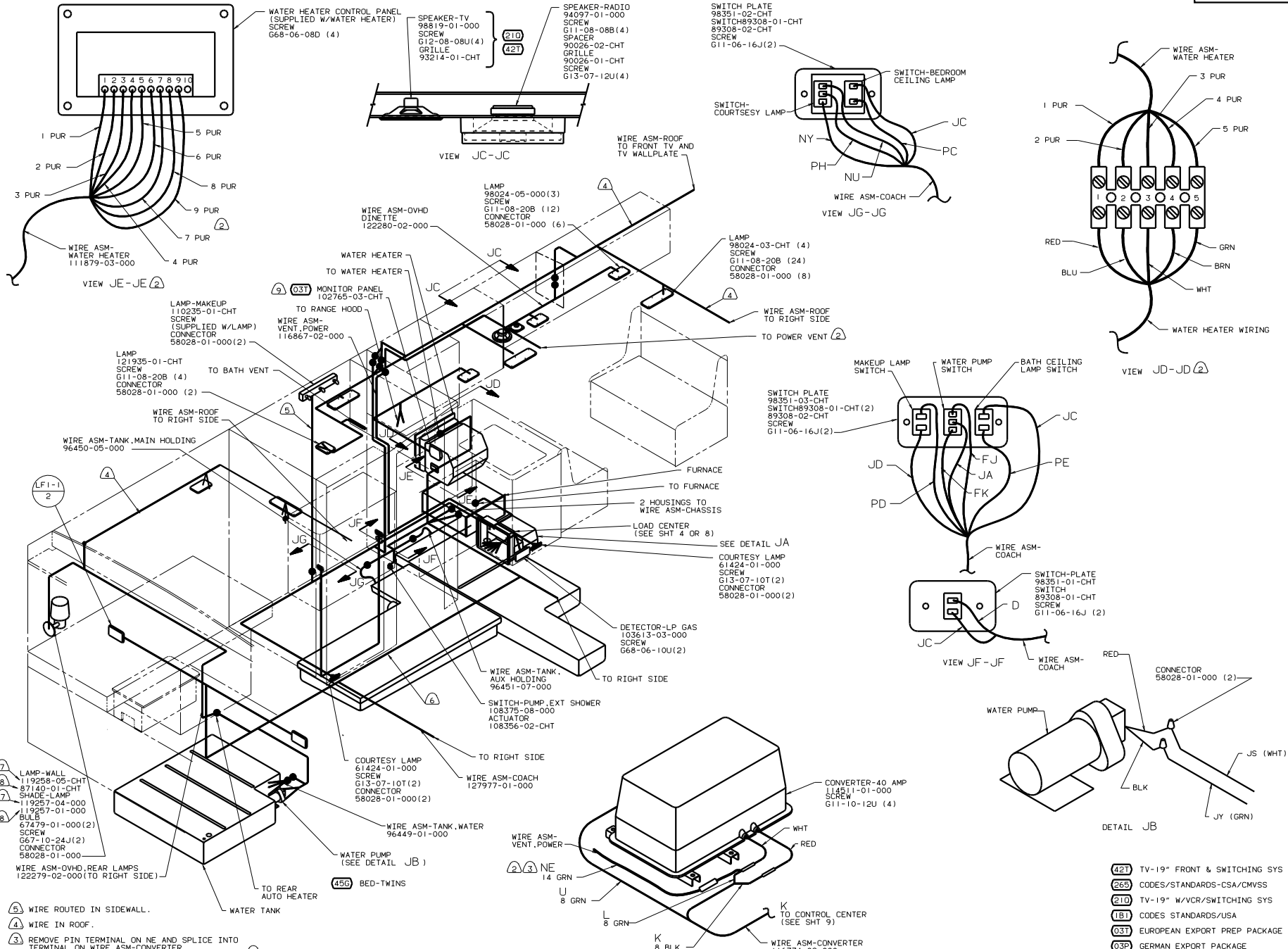




NOTES:  
 (2) BROWN WIRES ARE LINELOAD. BLUE WIRES ARE NEUTRAL.  
 (1) ALL GRN/YEL WIRES GO TO GROUND BAR.

FOR ELECTRICAL TORQUE SPECIFICATIONS SEE DWG NO. 128783-01-000

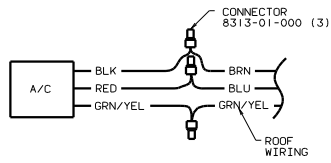
(03T) EUROPEAN EXPORT PREP PACKAGE  
 (03D) GERMAN EXPORT PACKAGE  
 99 F30N (03T)  
 WIRING INSTL-BODY(25 LC EUR)  
 SHEET 8 OF 13



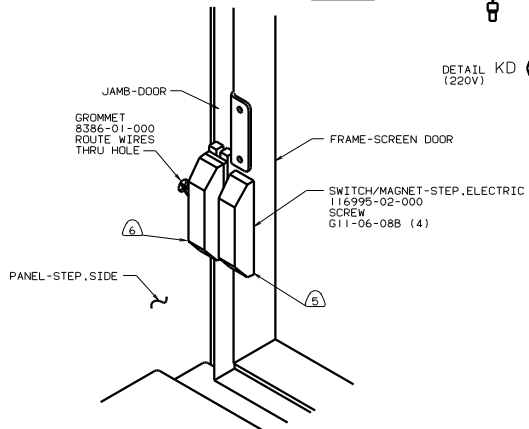
- NOTES**
1. CLAMP WIRES WITH CLAMP 83609-01-000 AND SCREW G11-08-12B EVERY 600.
  2. 03T EUROPEAN EXPORT PREP PACKAGE.
  3. REMOVE PIN TERMINAL ON NE AND SPLICE INTO TERMINAL ON WIRE ASM-CONVERTER.
  4. WIRE ROUTED IN SIDEWALL.
  5. WIRE IN ROOF.
  6. WIRE ROUTED BELOW FLOOR.
  7. WINNEBAGO UNITS.
  8. ITASCA UNITS.
  9. REPLACE WATER HEATER SWITCH WITH SWITCH-DUMMY 89303-01-CHT AND CONNECT WIRES TO SWITCH TOGETHER WITH SPLICE 31876-04-00.

42T	TV-19" FRONT & SWITCHING SYS
26S	CODES/STANDARDS-CSA/CMVSS
210	TV-19" W/VCR/SWITCHING SYS
18T	CODES STANDARDS/USA
03T	EUROPEAN EXPORT PREP PACKAGE
03P	GERMAN EXPORT PACKAGE
99 F30N (18T) (26S) (03T)	
TITLE: WIRING INSTL-BODY(L2 L)	
SHEET 9 OF 13	
130607	

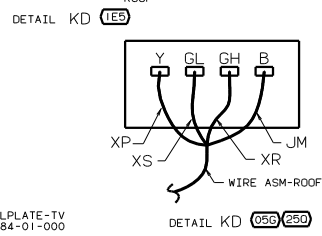
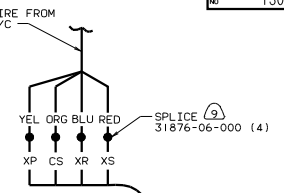
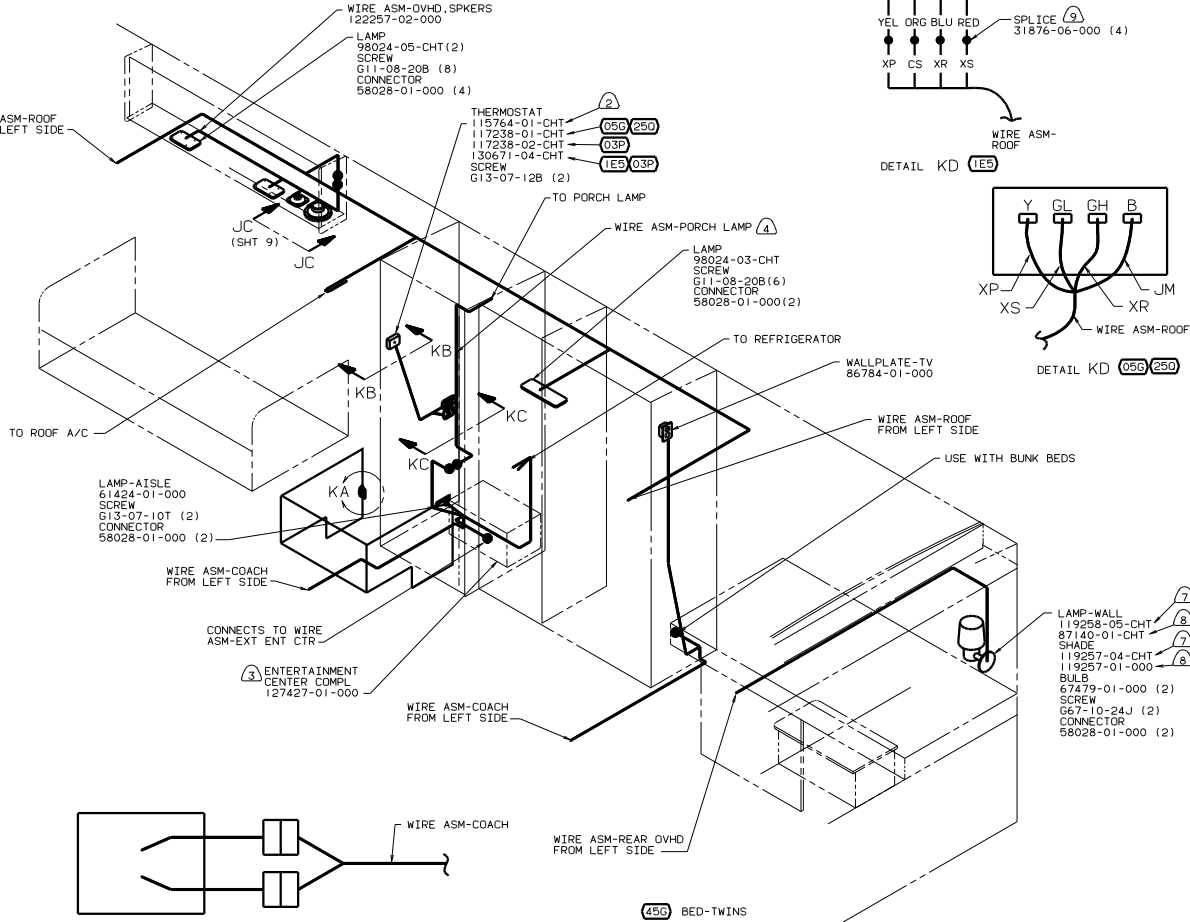
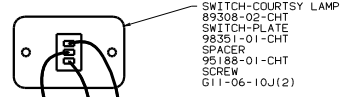
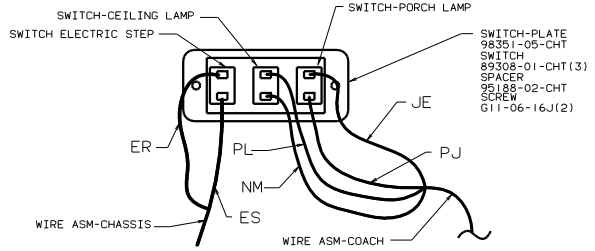
FOR ELECTRICAL TORQUE SPECIFICATIONS SEE DWG NO. 128783-01-000



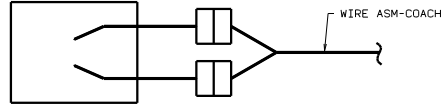
DETAIL KD (1E5)  
(220V)



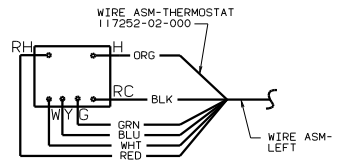
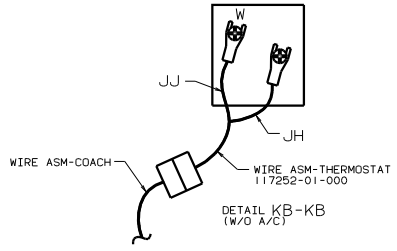
DETAIL KA (1E2)



DETAIL KB-KB (WITH A/C)



DETAIL KB-KB (W/O A/C)

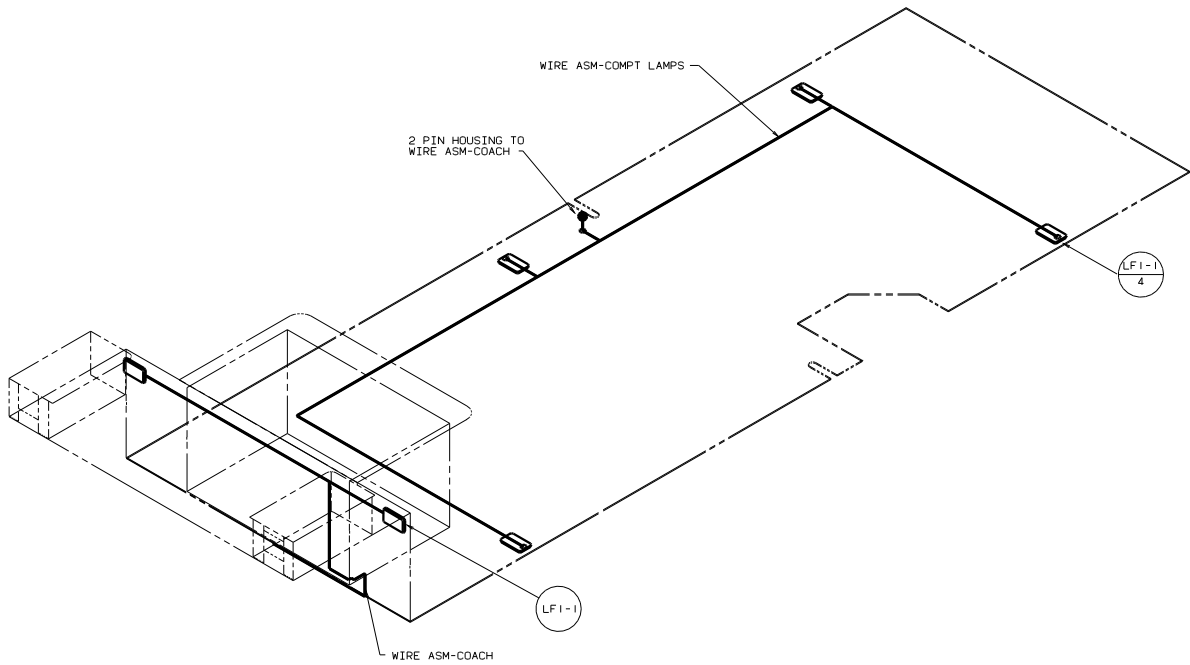


VIEW KB-KB (1E5, 03P)

FOR ELECTRICAL TORQUE SPECIFICATIONS SEE DWG NO. 128783-01-000

- (1E2) ENTRANCE STEP-ELEC.
- (45G) BED-TWINS
- (03P) GERMAN EXPORT PACKAGE
- (1E5) A/C ROOF, EXPORT-ONE
- (03P) GERMAN EXPORT PACKAGE
- (05G) A/C-ROOF (1) 13,500-220V
- (03T) EUROPEAN EXPORT PREP PACKAGE
- (250) A/C ROOF AIR (1) 14,800 BTU
- (265) CODES/STANDARDS-CSA/CMVSS
- (1B1) CODES STANDARDS/USA
- 99 F30N (1B1) (265)

- (9) REMOVE TERMINALS FROM WIRE ASM-ROOF - ADD SPLICES.
  - (8) ITASCA UNITS.
  - (7) WINNEBAGO UNITS.
  - (6) MOUNT SWITCH AND SPACER TO BLOCK ON JAMB ADJUST HEIGHT TO MATCH MAGNET.
  - (5) MOUNT MAGNET USING PILOT HOLES IN SCREEN DOOR FRAME. MOUNT WITH MAGNET TOWARD SWITCH.
  - (4) WIRE ROUTED IN SIDEWALL.
  - (3) SEE ENTERTAINMENT\_CENTER-COMPL FOR ADDITIONAL INFORMATION.
  - (2) WITHOUT (250) (05G) (1E5) (03P)
1. CLAMP WIRES WITH CLAMP 83609-01-000 AND SCREW G11-08-12B EVERY 600.



1. CLAMP WIRES WITH CLAMP 83609-01-000  
 AND SCREW G11-08-12B EVERY 600.

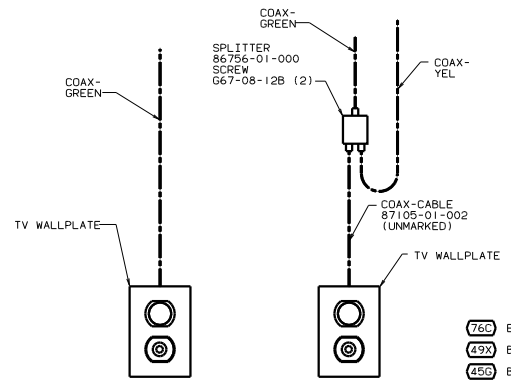
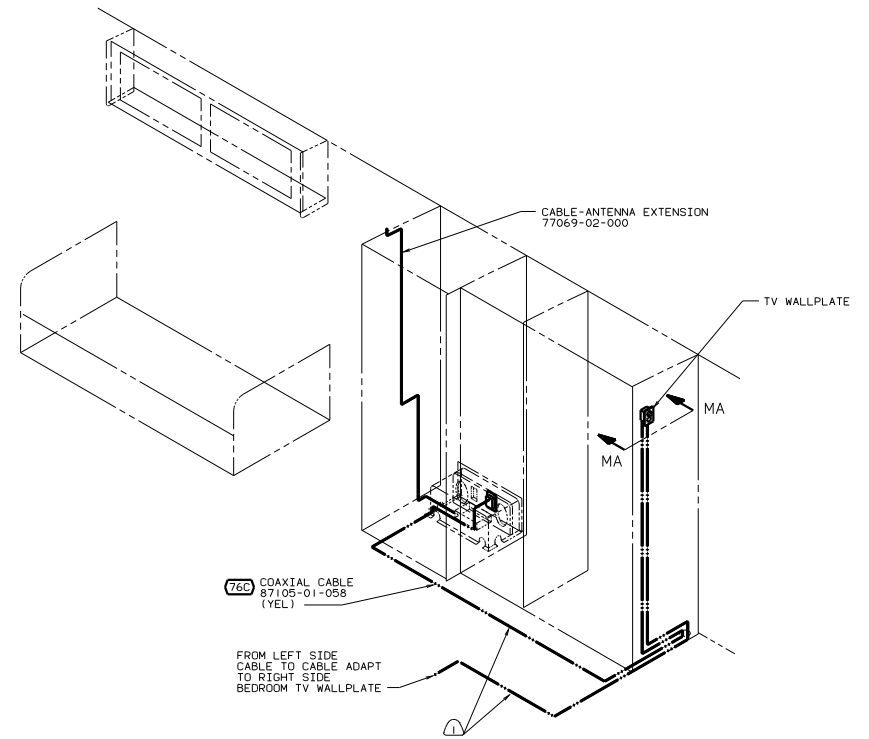
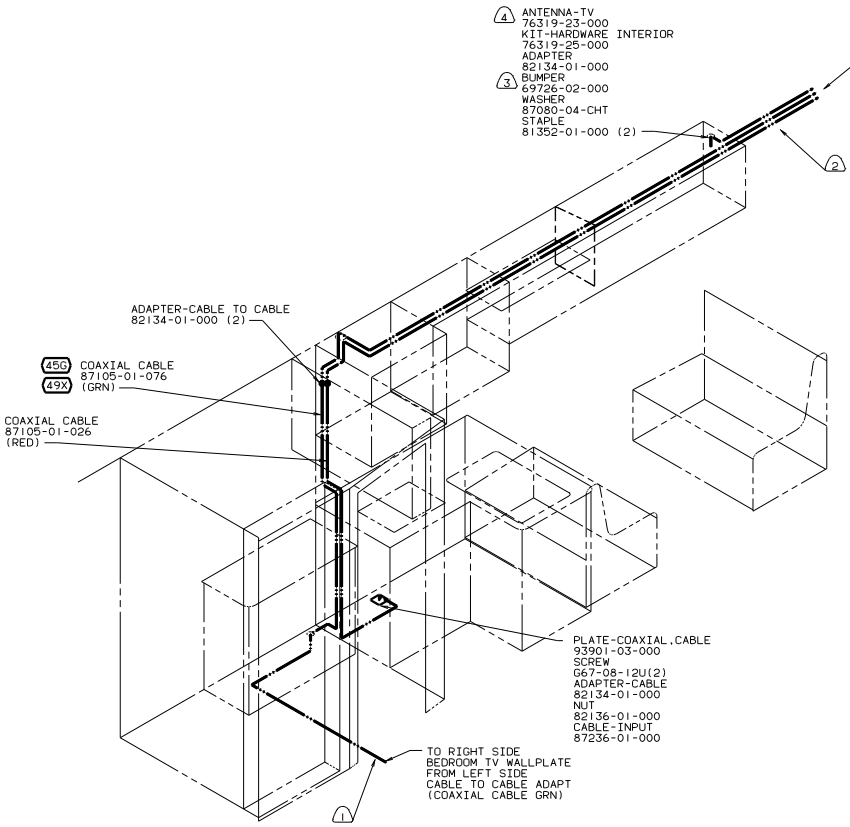
NOTES:

FOR ELECTRICAL  
 TORQUE  
 SPECIFICATIONS  
 SEE DWG NO.  
 128783-01-000

- (49X) BED-QUEEN-BACKWALL
- (1B1) CODES STANDARDS/USA
- (03T) EUROPEAN EXPORT PREP PACKAGE
- (03R) GERMAN EXPORT PACKAGE

99 F30N (1B1) (03T)

TITLE: WIRING INSTL-BODY(12 BL.)  
 DWG NO. 130607 SHEET 11 OF 13

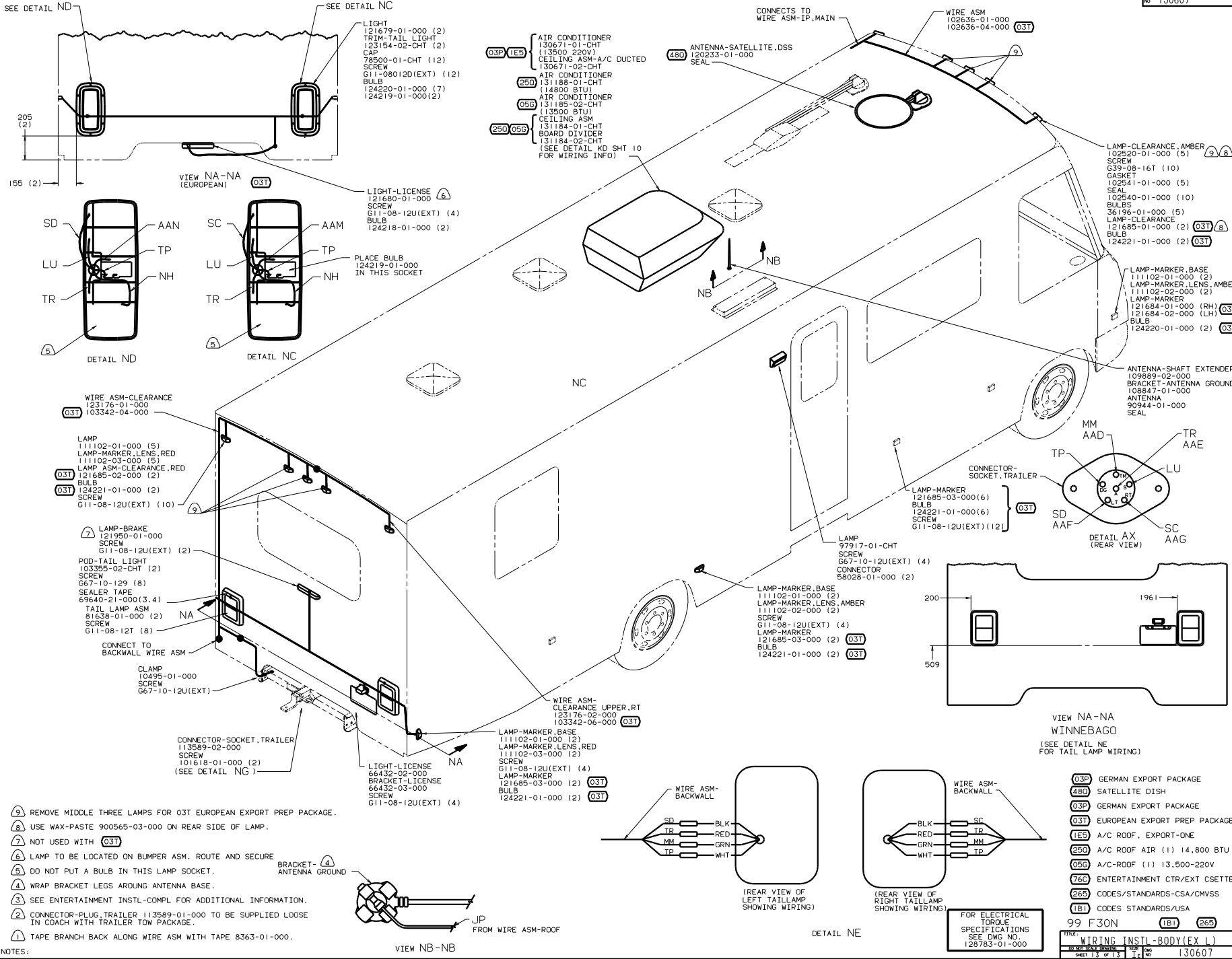


- 76C ENTERTAINMENT CTR/EXT CSETTE
- 49X BED-QUEEN-BACKWALL
- 45G BED-TWINS
- 265 CODES/STANDARDS-CSA/CMVSS
- 1B1 CODES STANDARDS/JSA
- 03T EUROPEAN EXPORT PREP PACKAGE
- 03P GERMAN EXPORT PACKAGE

FOR ELECTRICAL TORQUE SPECIFICATIONS SEE DWG NO. 128783-01-000

99 F30N (1B1) (265) (03T)  
 TITLE: WIRING INSTL-BODY(COAX)  
 SHEET 12 OF 13

- 4 SEE DRAWING 76319-01-000 FOR INSTALLATION OF TV ANTENNA.
- 3 ADD RUBBER BUMPERS TO ROOF UNDER EACH END OF ANTENNA TO PREVENT CONTACT WITH ROOF.
- 2 ROUTED IN ROOF.
- 1 ROUTED BELOW FLOOR.



- NOTES:
- ② CONNECTOR-PLUG, TRAILER 113589-01-000 TO BE SUPPLIED LOOSE IN COACH WITH TRAILER TOW PACKAGE.
  - ③ SEE ENTERTAINMENT INSTL-COMPL FOR ADDITIONAL INFORMATION.
  - ④ WRAP BRACKET LEGS AROUND ANTENNA BASE.
  - ⑤ DO NOT PUT A BULB IN THIS LAMP SOCKET.
  - ⑥ LAMP TO BE LOCATED ON BUMPER ASM. ROUTE AND SECURE
  - ⑦ NOT USED WITH 03T
  - ⑧ USE WAX-PASTE 900565-03-000 ON REAR SIDE OF LAMP.
  - ⑨ REMOVE MIDDLE THREE LAMPS FOR 03T EUROPEAN EXPORT PREP PACKAGE.

03P	GERMAN EXPORT PACKAGE
480	SATELLITE DISH
03T	EUROPEAN EXPORT PREP PACKAGE
1E5	A/C ROOF, EXPORT-ONE
250	A/C ROOF AIR (1) 14,800 BTU
05G	A/C-ROOF (1) 13,500-220V
76C	ENTERTAINMENT CTR/EXT CSETTE
26S	CODES/STANDARDS-CSA/CVSS
1B1	CODES STANDARDS/USA

99 F30N 1B1 26S

FOR ELECTRICAL TORQUE SPECIFICATIONS SEE DWG NO. 128783-01-000

TITLE: WIRING INSTL-BODY(EX LJ)  
 SHEET 13 OF 13