



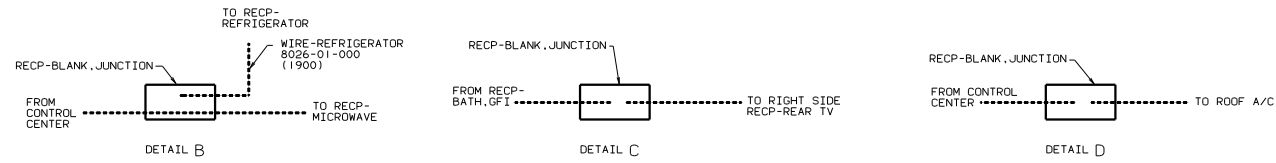
DANGER

Danger of electrical shock, burns or death. Always remove all power sources before attempting any repair, service or diagnostic work. Power can be present from shore power, generator, inverter or battery. All power sources must be disabled and secured before performing any service.

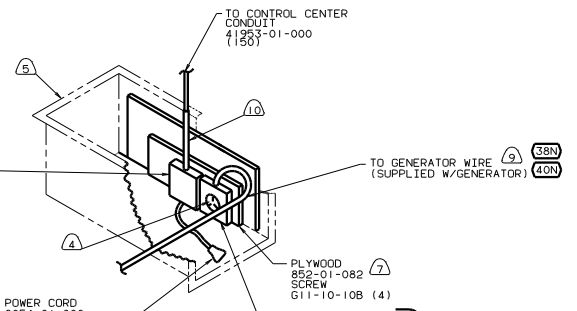


CAUTION

If you lack the skills, tools or equipment to perform diagnostic or repair work leave such work to an authorized Winnebago Industries dealer or other qualified shop.

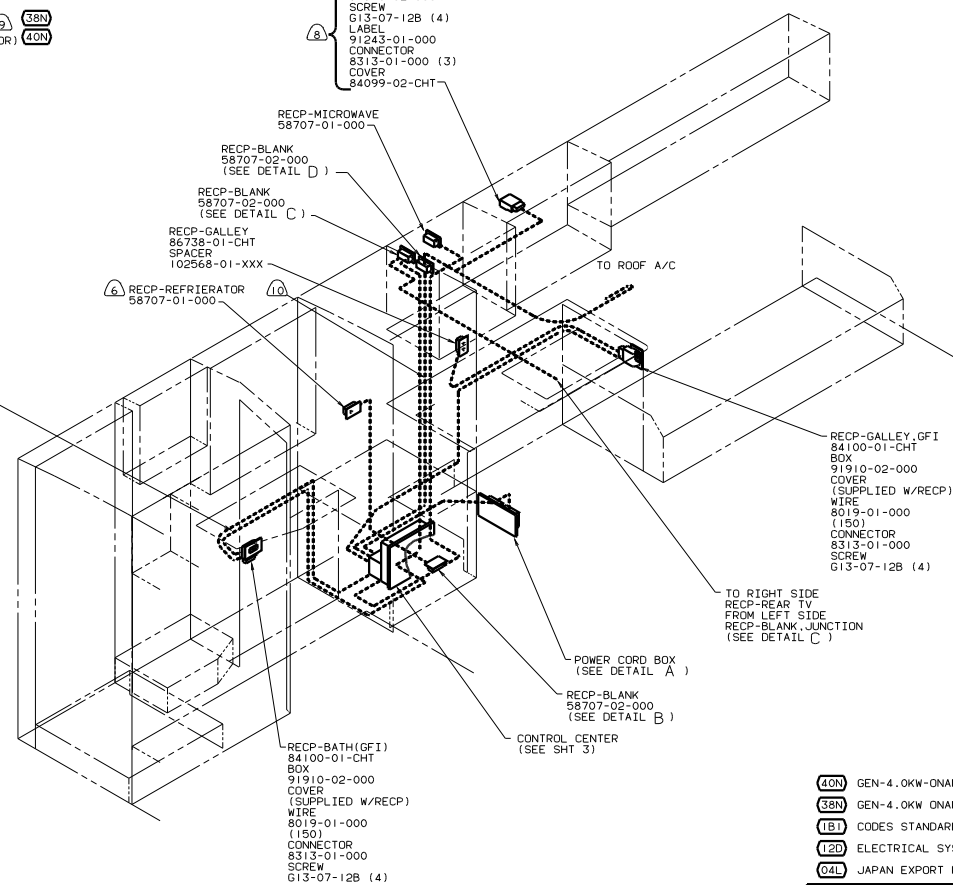


- BOX 8289-01-000
- COVER 8294-01-000
- SCREW G67-10-10B (2)
- WIRE 50235-01-000 (150)
- TERMINAL 8328-01-000
- CONNECTOR 8314-01-000
- CONNECTOR 8314-01-000
- 8311-01-000 (2)
- SCREW-GROUND_GREEN 103291-01-000
- CONNECTOR 8356-01-000



- (38N)
- (40N)

- BOX 91910-02-000
- SCREW G13-07-12B (4)
- LABEL 91243-01-000
- CONNECTOR 8313-01-000 (3)
- COVER 84099-02-CHT



11. SEAL ALL HOLES THROUGH FLOOR.
 - (10) APPLY MINIMUM DIAMETER CONDUIT 41953-01-.02-.03-.08-000 AS REQUIRED.
 - (9) SEE GENERATOR INSTALLATION FOR ADDITIONAL INFORMATION
 - (8) WITHOUT 250 A/C ROOF-ONE 14800.
 - (7) PAINT EXPOSED SURFACES BLACK WITH 106112-01-000.
 - (6) LOCATE RECEPTACLE ON TIEDOWN BRACKET.
 - (5) SEE BODY INSTL-DOORS & COMPARTMENTS FOR ADDITIONAL INFORMATION.
 - (4) INSTALL RECEPTACLE WITH GROUND TOWARD OUTBOARD SIDE OF VEHICLE.
3. ALL GROUND WIRES TO BE COVERED WITH TUBING 8041-02-000.
 2. ALL WIRES ARE TO BE CLAMPED WITH CLAMP 10497-05-000 WITHIN 200 OF OUTLET BOXES. USE SCREW G67-10-12B.
 1. ALL WIRE TO BE CLAMPED WITH CLAMP 10495-01-000 OR CLIP 80734-02-000 EVERY 600. USE SCREW G67-10-12B UNLESS OTHERWISE SPECIFIED.

- (40N) GEN-4.0KW-ONAN-GAS-MICROLITE
- (38N) GEN-4.0KW-ONAN-GAS-JAPAN
- (1B1) CODES STANDARDS/USA
- (12D) ELECTRICAL SYSTEM 30 AMP
- (04L) JAPAN EXPORT PACKAGE

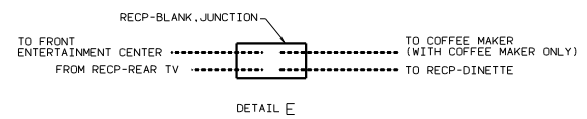
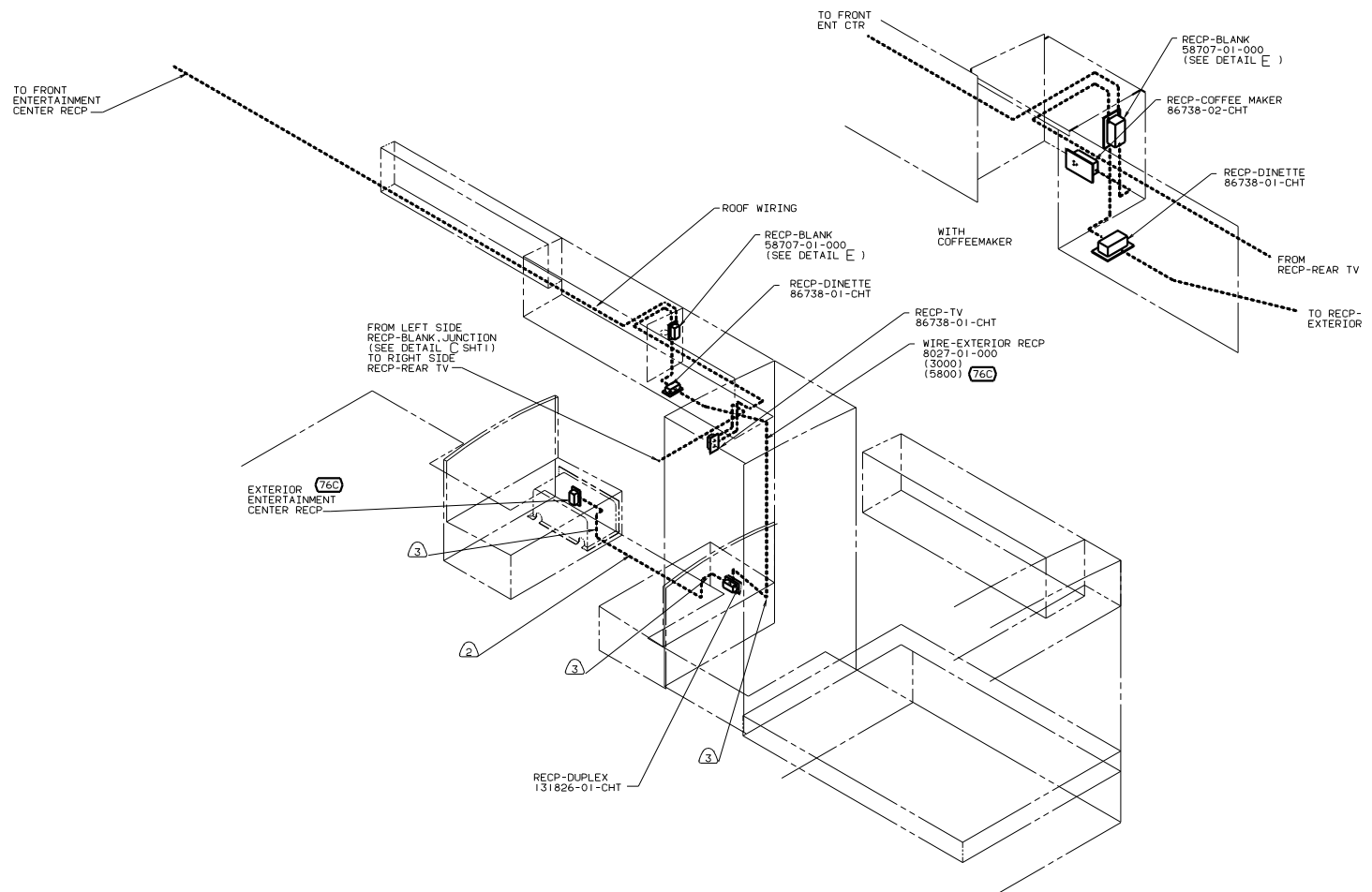
FOR ELECTRICAL TORQUE SPECIFICATIONS SEE DWG NO 128783-01-000

DATE		UNSPECIFIED TOLERANCES ARE:	MATERIAL
DATE	DATE	FRAMES 0.015	
DATE	DATE	ONE-PLACE 0.015	
DATE	DATE	TWO-PLACE 0.015	
DATE	DATE	THREE-PLACE 0.015	
DATE	DATE	FOUR-PLACE 0.015	
DATE	DATE	FIVE-PLACE 0.015	
DATE	DATE	SIX-PLACE 0.015	
DATE	DATE	SEVEN-PLACE 0.015	
DATE	DATE	EIGHT-PLACE 0.015	
DATE	DATE	NINE-PLACE 0.015	
DATE	DATE	TEN-PLACE 0.015	
DATE	DATE	ELEVEN-PLACE 0.015	
DATE	DATE	TWELVE-PLACE 0.015	
DATE	DATE	THIRTEEN-PLACE 0.015	
DATE	DATE	FOURTEEN-PLACE 0.015	
DATE	DATE	FIFTEEN-PLACE 0.015	
DATE	DATE	SIXTEEN-PLACE 0.015	
DATE	DATE	SEVENTEEN-PLACE 0.015	
DATE	DATE	EIGHTEEN-PLACE 0.015	
DATE	DATE	NINETEEN-PLACE 0.015	
DATE	DATE	TWENTY-PLACE 0.015	

WINNEBAGO 99 F28E

LANE F28RC TITLE WIRING INSTL-BODY(110130US)

REV 1 SCALE: NONE SEE DWG NO 128783-01-000 SHEET 1 OF 10

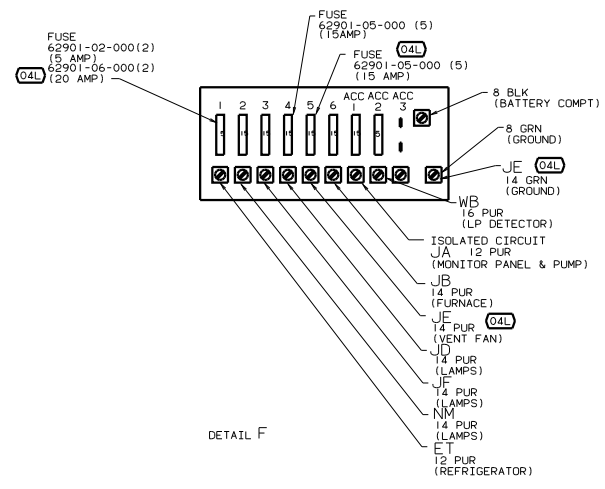
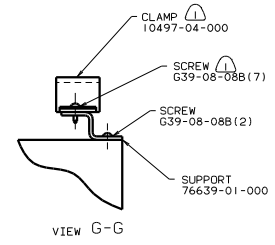
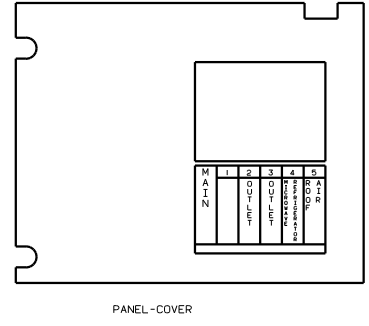
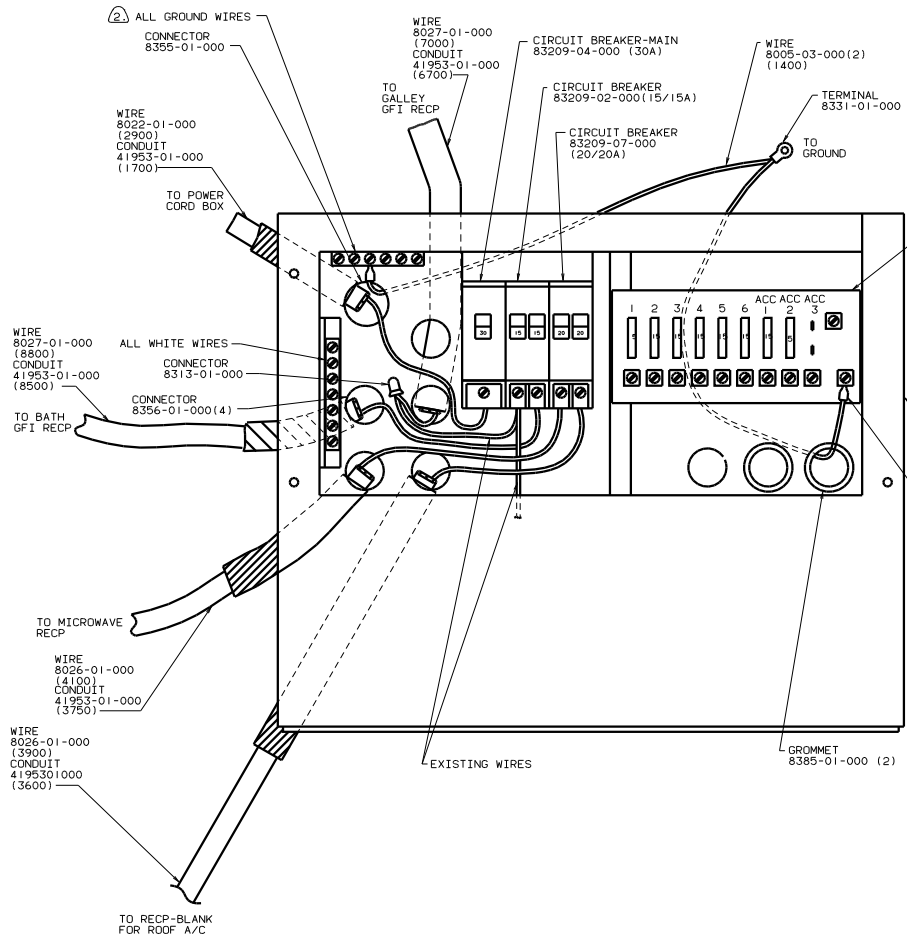


- NOTES:
- ③ APPLY MINIMUM DIAMETER CONDUIT 41953-01,-02,-07,-08 AS REQUIRED.
 - ② ROUTED IN FLOOR.
 - ① ALL WIRE TO BE CLAMPED WITH CLAMP 10495-01-000 OR CLIP 80734-02-000 EVERY 600, USE SCREW G67-10-12B UNLESS OTHERWISE SPECIFIED.

FOR ELECTRICAL TORQUE SPECIFICATIONS SEE DWG NO. 128783-01-000

- 99 F28E
- ⑦6C ENTERTAINMENT CTR/EXT CSETTE
 - ⑧1B1 CODES STANDARDS/USA
 - ⑩2D ELECTRICAL SYSTEM 30 AMP
 - ⑭4L JAPAN EXPORT PACKAGE

TITLE: WIRING INSTL-BODY(110R30US)	
NO. OF SHEETS: 2	SHEET NO. 2 OF 10
DATE: 11/01/05	130602



2 ALL GROUND WIRES TO BE COVERED WITH TUBING 8041-02-000.

1 FASTEN ALL WIRES TO SUPPORT, USE WITH ONE SCREW PER CLAMP.

FOR ELECTRICAL TORQUE SPECIFICATIONS SEE DWG NO. 128783-01-000

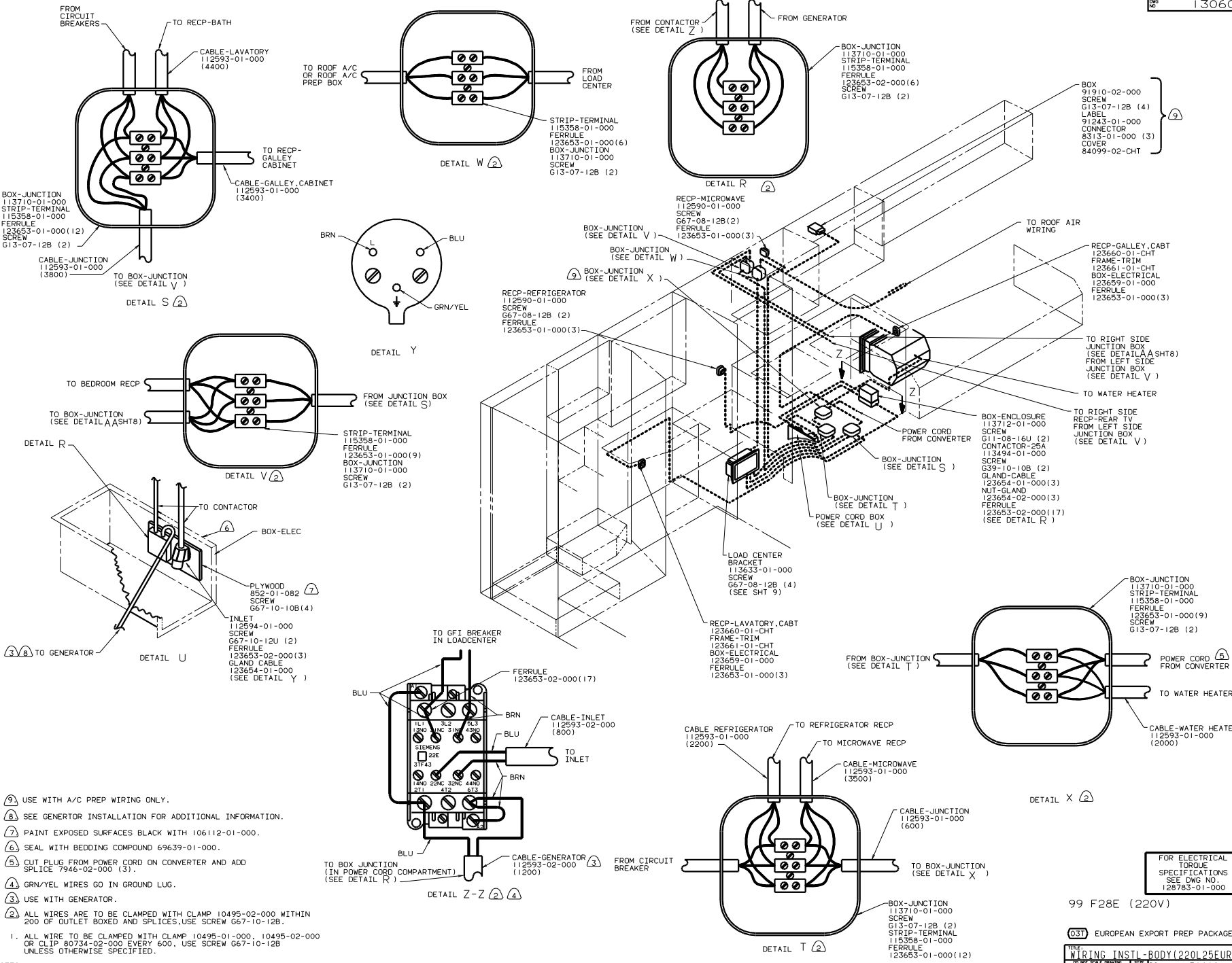
99 F28E

(1B) CODES STANDARDS/USA

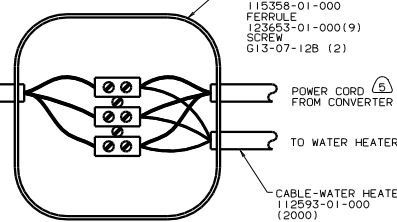
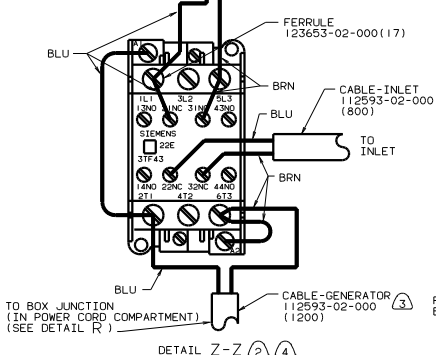
(12D) ELECTRICAL SYSTEM 30 AMP

(04L) JAPAN EXPORT PACKAGE

FILE	130602	REV	1
DATE	10/20/00	BY	J.E.
SHEET	3	OF 10	



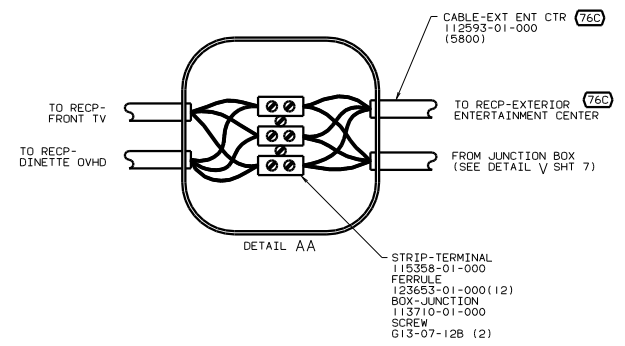
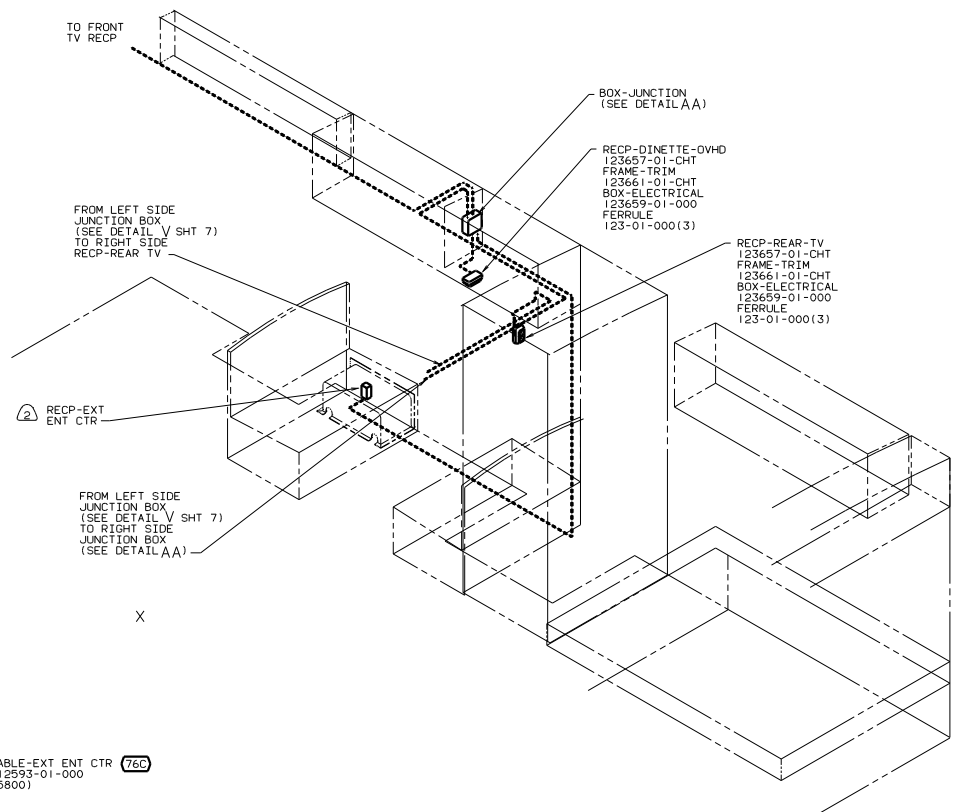
- ② USE WITH A/C PREP WIRING ONLY.
 - ③ SEE GENERATOR INSTALLATION FOR ADDITIONAL INFORMATION.
 - ④ PAINT EXPOSED SURFACES BLACK WITH 106112-01-000.
 - ⑤ SEAL WITH BEDDING COMPOUND 69639-01-000.
 - ⑥ CUT PLUG FROM POWER CORD ON CONVERTER AND ADD SPLICE 7946-02-000 (3).
 - ⑦ GRN/YEL WIRES GO IN GROUND LUG.
 - ⑧ USE WITH GENERATOR.
 - ⑨ ALL WIRES ARE TO BE CLAMPED WITH CLAMP 10495-02-000 WITHIN 200 OF OUTLET BOXED AND SPLICES, USE SCREW G67-10-12B.
1. ALL WIRE TO BE CLAMPED WITH CLAMP 10495-01-000, 10495-02-000 OR CLIP 80734-02-000 EVERY 600, USE SCREW G67-10-12B UNLESS OTHERWISE SPECIFIED.



FOR ELECTRICAL TORQUE SPECIFICATIONS SEE DWG NO. 128783-01-000	
--	--

99 F28E (220V)

③31 EUROPEAN EXPORT PREP PACKAGE	
FILE	WIRING INSTL - BODY (220L 25EUR)
NO. OF SHEETS	16
SHEET NO.	4 OF 16
DATE	130602



(2) SEE ENTERTAINMENT CENTER COMPL FOR ADDITIONAL INFORMATION.

1. ALL WIRES TO BE CLAMPED WITH CLAMP 10495-01-000, 10495-02-000 OR CLIP 80734-01-000 EVERY 600. USE SCREW 667-10-12B UNLESS OTHERWISE SPECIFIED.

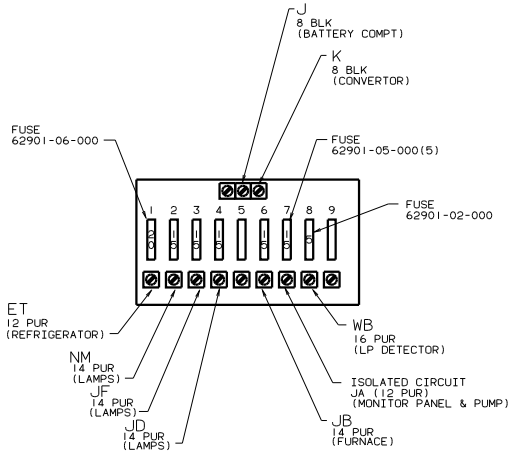
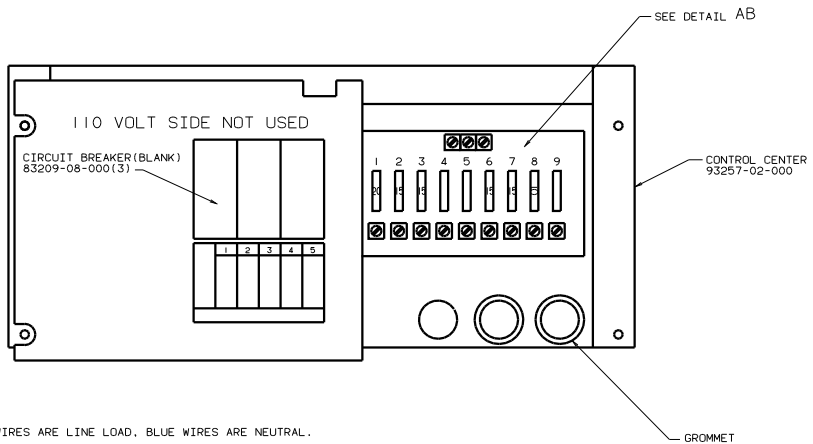
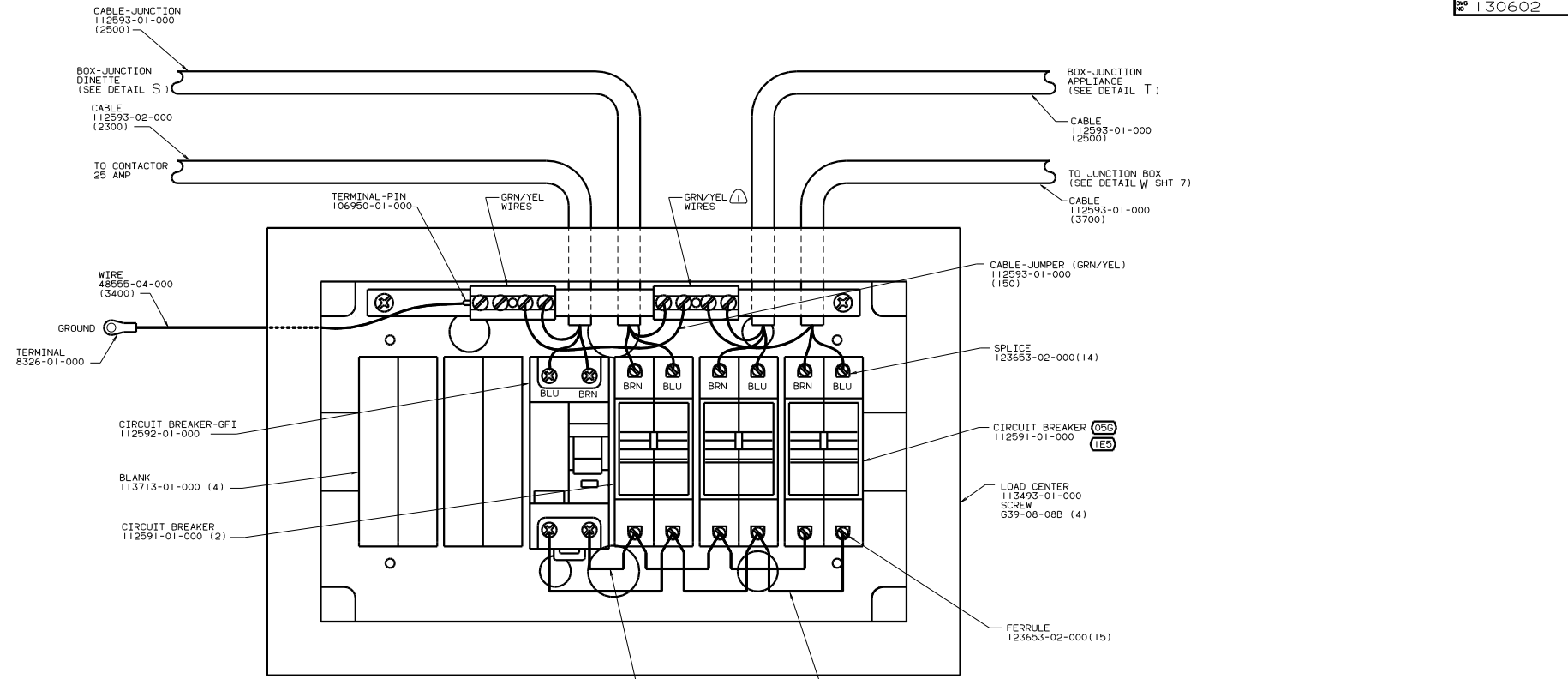
NOTES:

99 F28E (220V)

(76C) ENTERTAINMENT CTR/EXT CSETTE
(03T) EUROPEAN EXPORT PREP PACKAGE

FOR ELECTRICAL TORQUE SPECIFICATIONS SEE DWG NO. 128783-01-000

TITLE		WIRING INSTL-BODY (220R25EUR)	
NO. OF SHEETS	5	OF	10
DATE		REV	1.0
DRAWN		130602	



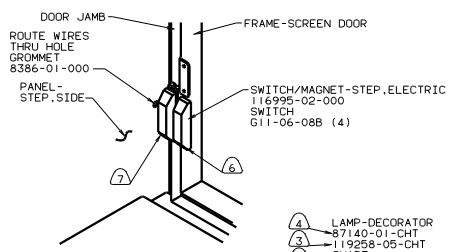
NOTES:
 1) ALL GRN/YEL WIRES GO TO GROUND BAR.
 2) BROWN WIRES ARE LINE LOAD, BLUE WIRES ARE NEUTRAL.

FOR ELECTRICAL TORQUE SPECIFICATIONS SEE DWG NO. 128783-01-000

99 F28E

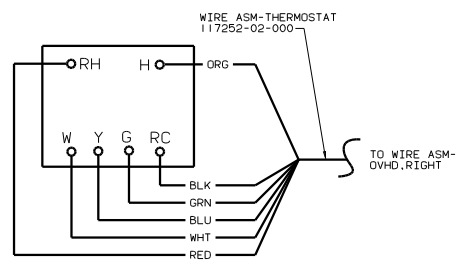
IES	A/C ROOF, EXPORT-ONE
OSG	A/C-ROOF (1) 13,500-220V
O3T	EUROPEAN EXPORT PREP PACKAGE

FILE	WIRING INSTL-BODY(25 CC EUR)
NO. OF SHEETS	5 OF 10
DWG NO.	130602

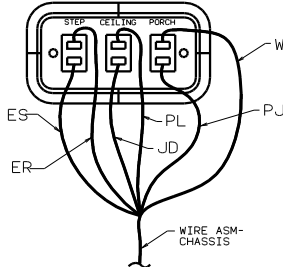
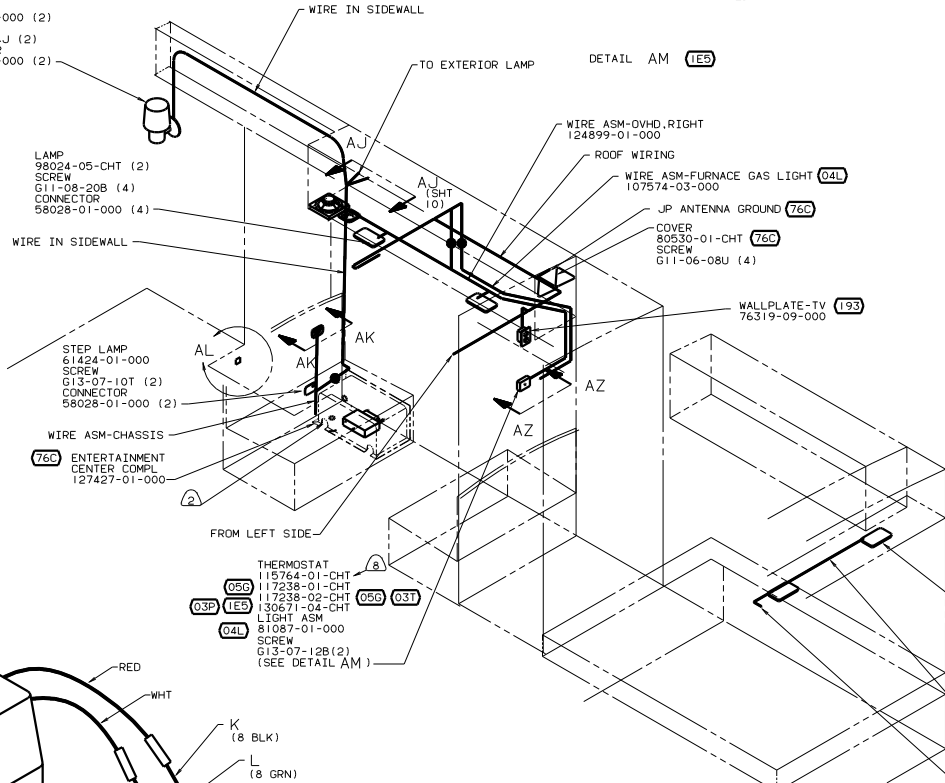


- ④ LAMP-DECORATOR 87140-01-CHT
- ③ 119258-05-CHT
- ④ SHADE
- ③ 119257-01-CHT
- ③ 119257-04-CHT
- BULB 67479-01-000 (2)
- SCREW 667-10-24J (2)
- CONNECTOR 58028-01-000 (2)

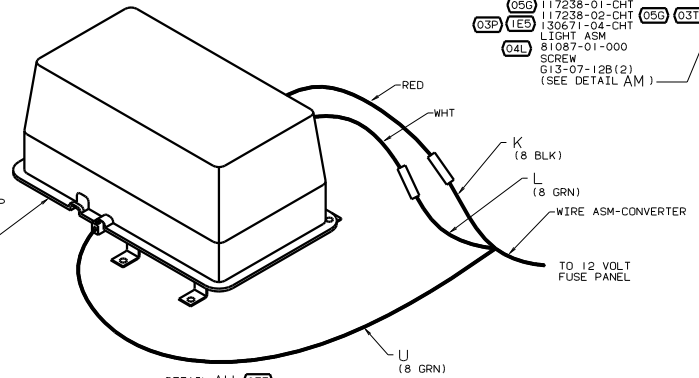
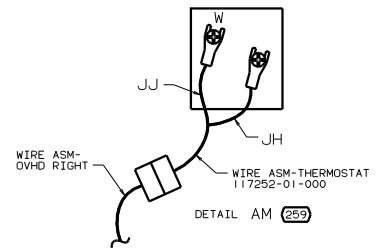
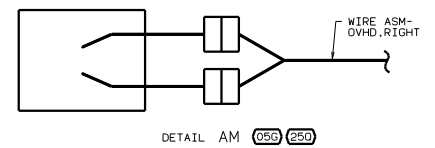
DETAIL AL (1E2)



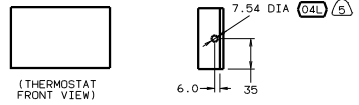
DETAIL AM (1E5)



VIEW AK-AK



DETAIL AH (03T) (SEE SHT 7)



VIEW AZ-AZ (LIGHT MOUNTING HOLE)

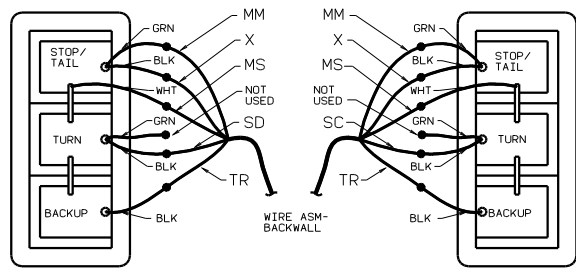
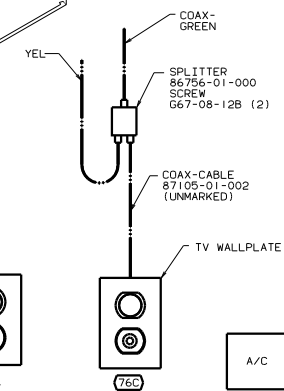
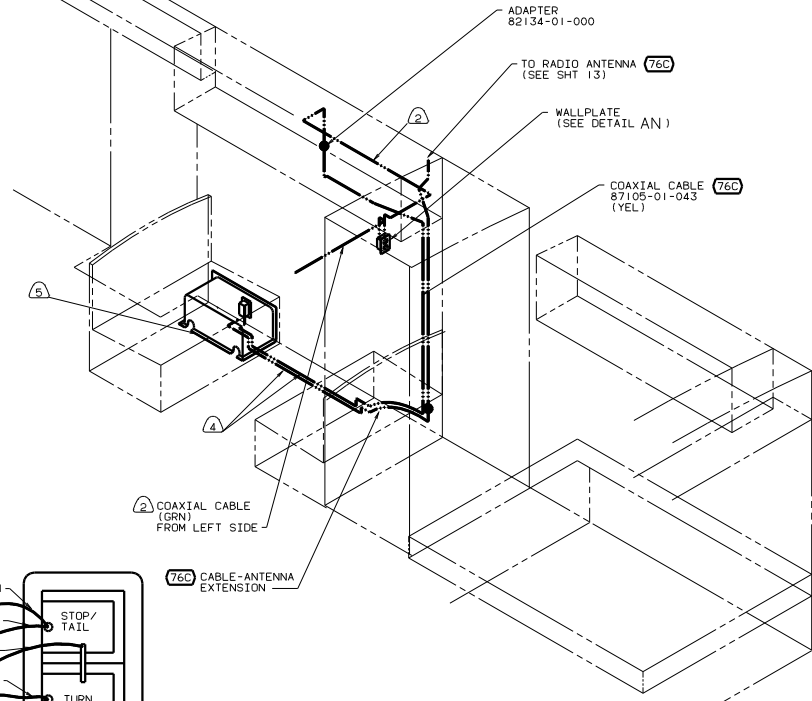
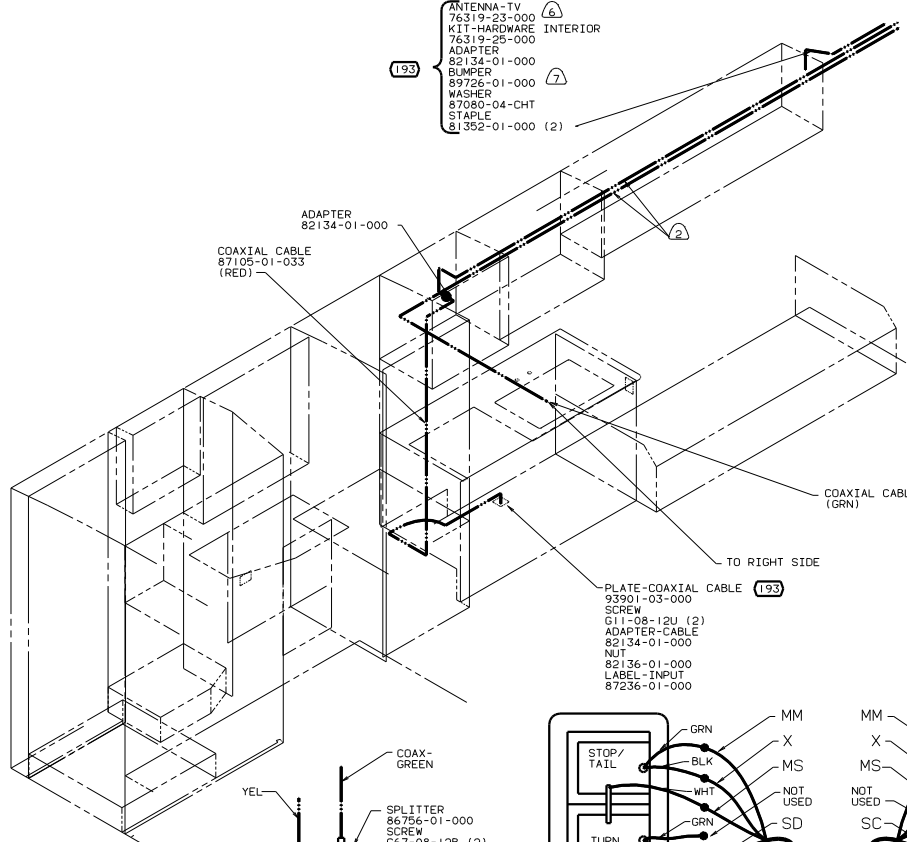
- ⑤ DRILL HOLE THRU END SURFACE.
- ④ ITASCA UNITS.
- ③ WINNEBAGO UNITS.
- ② SEAL HOLES THROUGH FLOOR.
- ① ALL WIRE TO BE CLAMPED WITH CLAMP 10495-01-000 OR CLIP 80734-02-000 EVERY 600. USE SCREW G67-10-12B UNLESS OTHERWISE SPECIFIED.

- ⑧ WITHOUT 05G A/C-ROOF-1/13.5-220V.
- ⑦ MOUNT SWITCH AND SPACER TO BLOCK ON JAMB. ADJUST HEIGHT TO MATCH MAGNET.
- ⑥ MOUNT MAGNET USING PLOT HOLES IN SCREEN DOOR FRAME. MOUNT WITH MAGNET TOWARD SWITCH.

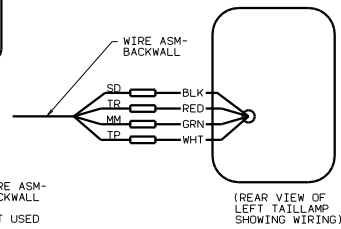
99 F28E

- (1E2) ENTRANCE STEP-ELEC.
- (76C) ENTERTAINMENT CTR/EXT CSETTE
- (250) A/C ROOF AIR (1) 14,800 BTU
- (259) A/C ROOF WITHOUT
- (1E5) A/C ROOF, EXPORT-ONE
- (1B1) CODES STANDARDS/USA
- (193) TV ANTENNA
- (05G) A/C-ROOF (1) 13,500-220V
- (04L) JAPAN EXPORT PACKAGE
- (03T) EUROPEAN EXPORT PREP PACKAGE
- (03P) GERMAN EXPORT PACKAGE

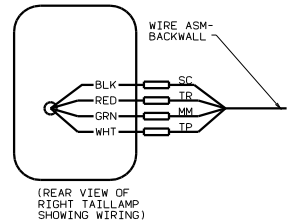
FOR ELECTRICAL TORQUE SPECIFICATIONS SEE DWG NO. 128783-01-000



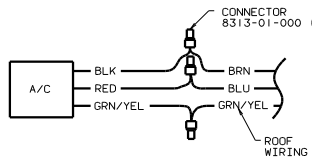
DETAIL BB (SHOWN FROM REAR VIEW)



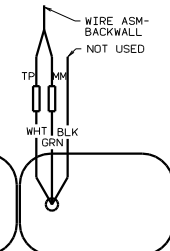
(REAR VIEW OF LEFT TAILLAMP SHOWING WIRING)



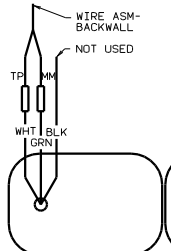
(REAR VIEW OF RIGHT TAILLAMP SHOWING WIRING)



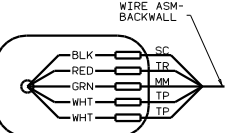
DETAIL AS (1E5)



(REAR VIEW OF LEFT TAILLAMP SHOWING WIRING)



(REAR VIEW OF RIGHT TAILLAMP SHOWING WIRING)



(REAR VIEW OF RIGHT TAILLAMP SHOWING WIRING)

- 8. SEAL ALL HOLES THROUGH FLOOR.
- 7. ADD RUBBER BUMPERS TO ANTENNA UNDER EACH END OF ANTENNA TO PREVENT CONTACT WITH ROOF.
- 6. SEE DRAWING 76319-01-000 FOR INSTALLATION OF TV ANTENNA.
- 5. SEE ENTERTAINMENT CENTER COMPL. FOR MORE WIRING INFORMATION.
- 4. ROUTED THRU FLOOR.
- 3. WITHOUT 76C ENT CTR-EXT W/CASSETTE
- 2. ROOF WIRING.
- 1. CLAMP WIRES WITH CLAMP 83609-01-000 AND SCREW G11-08-12B EVERY 600.

FOR ELECTRICAL TORQUE SPECIFICATIONS SEE DWG NO. 128763-01-000

- 99 F28E
- 76C ENTERTAINMENT CTR/EXT CSETTE
- 665 CODES/STANDARDS-CSA/CMVSS
- 1B1 CODES STANDARDS/JUSA
- 193 TV ANTENNA
- 03T EUROPEAN EXPORT PREP PACKAGE

