



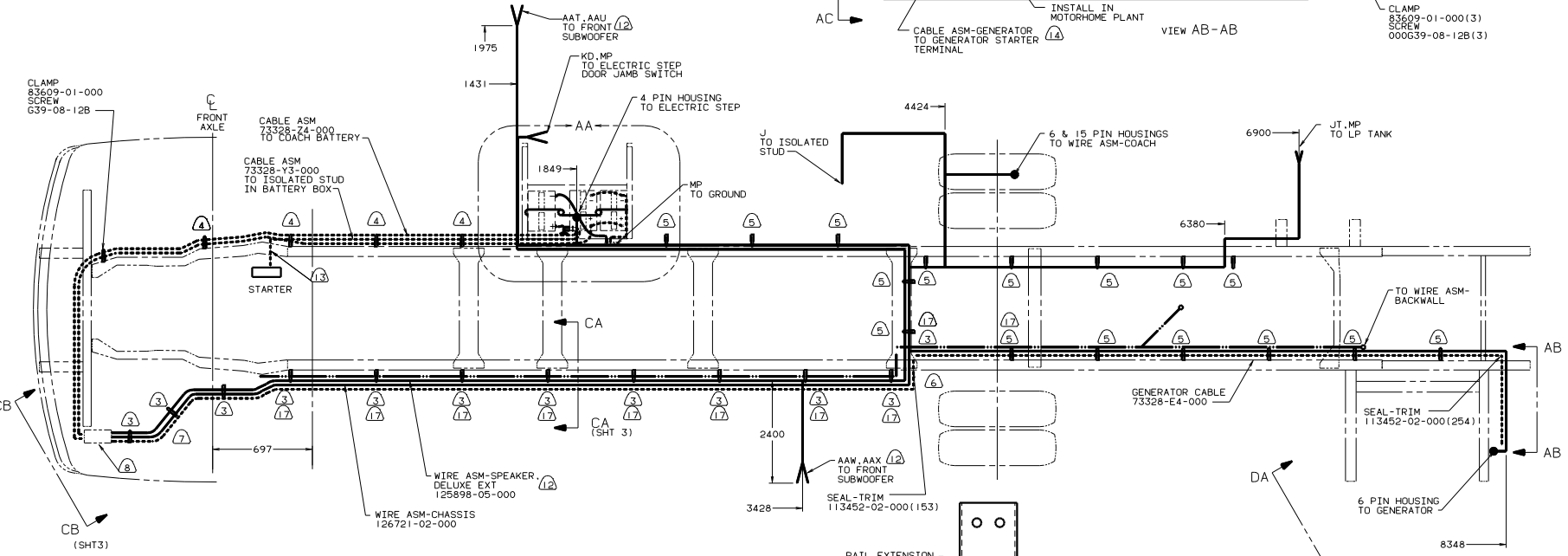
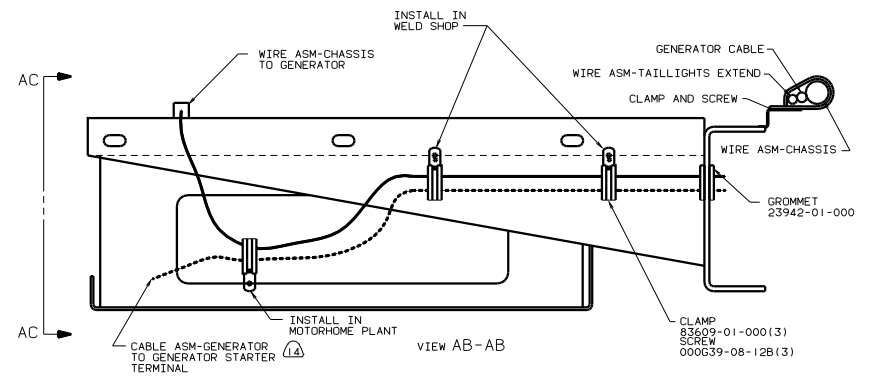
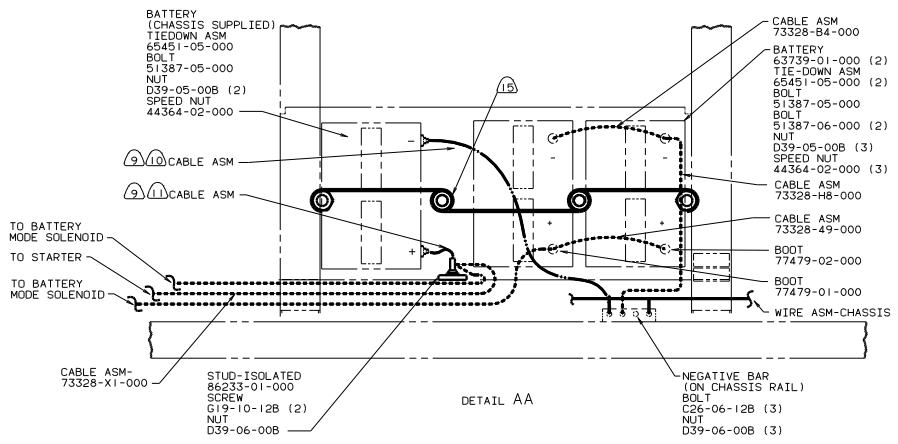
DANGER

Danger of electrical shock, burns or death. Always remove all power sources before attempting any repair, service or diagnostic work. Power can be present from shore power, generator, inverter or battery. All power sources must be disabled and secured before performing any service.



CAUTION

If you lack the skills, tools or equipment to perform diagnostic or repair work leave such work to an authorized Winnebago Industries dealer or other qualified shop.



- 12 21V SOUND SYSTEM-DXL
- 11 TRIM CABLE TO 400MM, ADD TERMINAL 8348-01-000.
- 10 TRIM CABLE TO 1300MM, ADD TERMINAL 8348-01-000.
- 9 SUPPLIED WITH CHASSIS.
- 8 SEE WIRING INSTL-FRONT END FOR ADDITIONAL INFORMATION.
- 7 COVER WITH CONDUIT 41953-09-000, 41953-10-000 & 41953-11-000 AS REQUIRED.
- 6 ROUTE WIRES AND CABLE OVER SPRING HANGER AND ON TOP OF CHASSIS RAIL AT THIS POINT.
- 5 CLAMP 10497-03-000, SCREW G39-08-12B
- 4 CLAMP 83609-01-000, SCREW G39-08-12B
- 3 CLAMP 83610-01-000, SCREW G39-08-12B.

- 15 USE TWO NUTS HERE TO ACCOUNT FOR BATTERY HEIGHT DIFFERENCE.
- 14 ROUTE WIRES & CABLE INSIDE CHASSIS RAIL AT THIS POINT & TO THE REAR.
- 13 BATTERY CABLE MUST BE INSTALLED TO STARTER MOTOR BEFORE ENGINE WIRING HARNESS AND ROUTED IN SUCH A MANNER AS TO PREVENT ANY POSSIBLE DEGRADATION FROM THE EXHAUST SYSTEM.

FOR ELECTRICAL TORQUE SPECIFICATIONS SEE DWG NO. 128783-01-000

16Q CHASSIS-CHEVY, GAS

| | | |
|------|----------------------------|----------|
| DATE | UNDESIGNED TOLERANCES ARE: | MATERIAL |
| DATE | WHOLE DIM (IN) | F 1:1 |
| DATE | ONE-PLACE (IN) | |
| DATE | TWO-PLACE (IN) | |
| DATE | THREE-PLACE (IN) | |
| DATE | FOUR-PLACE (IN) | |
| DATE | INCHES | |
| DATE | MILLIMETERS | |

WINNEBAGO 99 F & G35C

16Q CHASSIS-CHEVY, GAS

DATE: 07/10/00

SCALE: 1:1

SHEET 1 OF 4

130598

BATTERY (CHASSIS SUPPLIED)
 TIEDOWN ASM
 65451-05-000
 BOLT
 51387-05-000
 NUT
 D39-05-008 (2)
 SPEED NUT
 44364-02-000

BATTERY
 63739-01-000 (2)
 TIE-DOWN ASM
 65451-05-000 (2)
 BOLT
 51387-05-000
 BOLT
 51387-06-000 (2)
 NUT
 D39-05-008 (3)
 SPEED NUT
 44364-02-000 (3)

TO BATTERY MODE SOLENOID
 TO BATTERY MODE SOLENOID
 TO RELAY
 TO STARTER
 FORD SUPPLIED GROUNDS

CABLE ASM
 CABLE ASM

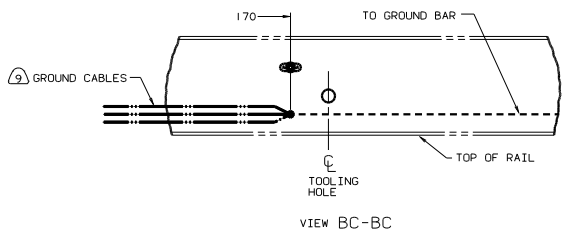
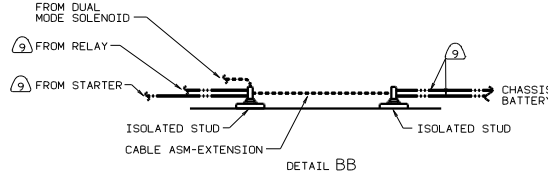
CABLE ASM
 73328-B4-000
 CABLE ASM
 73328-H8-000
 CABLE ASM
 73328-49-000
 BOOT
 77479-02-000
 BOOT
 77479-01-000

GROUND BOLT NUT
 D29-05-008
 STUD-ISOLATED
 86233-01-000 (2)
 SCREW
 G19-10-12B (4)
 NUT
 D39-06-008 (2)
 (SEE DETAIL BB)

CABLE ASM-EXTENSION
 73328-Y6-000
 CABLE ASM-GROUND
 73328-W4-000
 STUD-ISOLATED
 (SEE DETAIL BB)

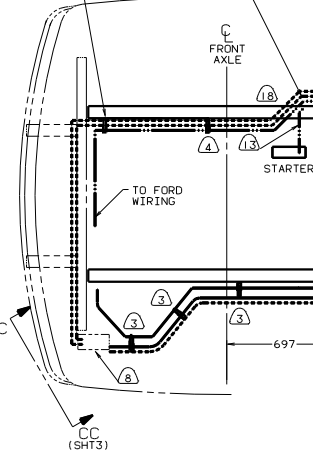
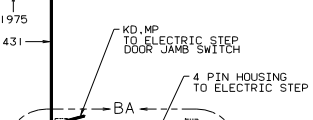
NEGATIVE BAR (ON CHASSIS RAIL)
 BOLT
 C26-06-12B (3)
 NUT
 D39-06-008 (3)

DETAIL BA

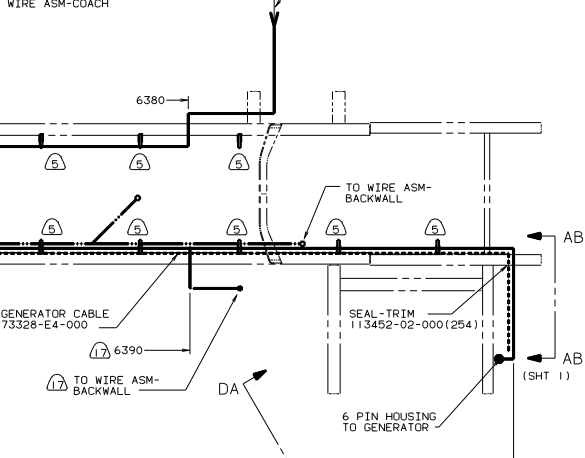
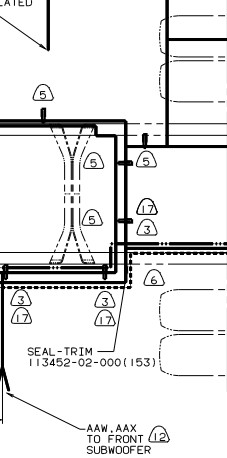
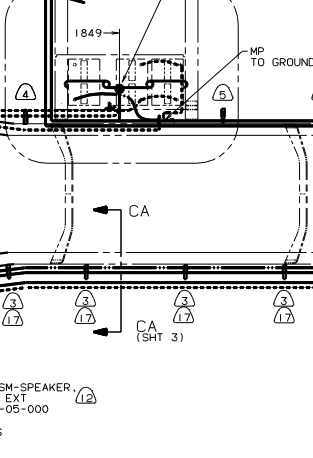


CLAMP
 83609-01-000
 SCREW
 G39-08-12B
 CABLE ASM
 73328-Y2-000
 TO ISOLATED STUD ON FRAME RAIL

AAT, AAU (12)
 TO FRONT SUBWOOFER



WIRE ASM-SPEAKER DELUXE EXT
 125898-05-000
 WIRE ASM-CHASSIS
 126721-02-000



- (11) CUT 14GA WIRE, 6 & 4GA CABLES 500 MM FROM BATTERY TERMINAL. ADD TERMINAL 8331-01-000(2) TO 4GA CABLES AND TERMINAL 8350-01-000(2) TO 14GA WIRES & 6GA CABLES. CONNECT TERMINALS TERMINALS TO ISOLATED STUDS AS SHOWN IN DETAIL N
- (10) TRIM CABLE TO 500MM. ADD TERMINAL 8348-01-000(2). INCLUDE ALL SMALL GROUND WIRES.
- (9) SUPPLIED WITH CHASSIS.
- (8) SEE WIRING INSTL-FRONT END FOR ADDITIONAL INFORMATION.
- (7) COVER WITH CONDUIT 41953-09-000, 41953-10-000 & 41953-11-000 AS REQUIRED.
- (6) ROUTE WIRES AND CABLE OVER SPRING HANGER AND ON TOP OF CHASSIS RAIL AT THIS POINT.
- (5) CLAMP 10497-03-000, SCREW G39-08-12B
- (4) CLAMP 83609-01-000, SCREW G39-08-12B
- (3) CLAMP 83610-01-000, SCREW G39-08-12B.

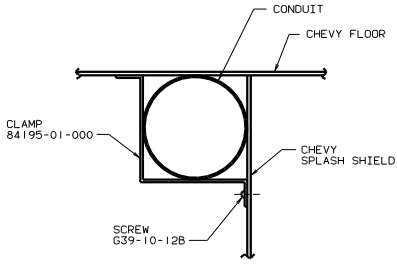
- (17) REROUTE FORD BACKWALL WIRING THRU FUEL FILL HOLE IN CHASSIS RAIL ON 208 TO 228 STRETCH UNITS.
- (16) HEAT SLEEVING IS NEEDED AROUND ENGINE BEGINNING AT 1900. LENGTH SHOULD BE 1200. PART # FOR 16G 87225-01-000. PART # FOR 170 GA 87226-02-000
- (15) USE TWO NUTS HERE TO ACCOUNT FOR BATTERY HEIGHT DIFFERENCE.
- (14) ROUTE WIRES & CABLE INSIDE CHASSIS RAIL AT THIS POINT & TO THE REAR
- (13) BATTERY CABLE MUST BE INSTALLED TO STARTER MOTOR BEFORE ENGINE WIRING HARNESS AND ROUTED IN SUCH A MANNER AS TO PREVENT ANY POSSIBLE DEGRADATION FROM THE EXHAUST SYSTEM.
- (12) 21V SOUND SYSTEM-DLX.

2. SECURE CONDUIT 41953-01-000, 41953-02-000 AND 41953-03-000 OVER ALL WIRES IN CONTACT WITH SHARP EDGES.

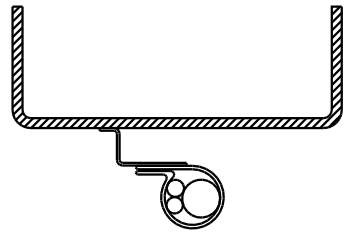
1. LEGEND: — WINNEBAGO, - - - - - CABLE, ——— CHASSIS SUPPLIED.

FOR ELECTRICAL TORQUE SPECIFICATIONS SEE DWG NO. 128783-01-000

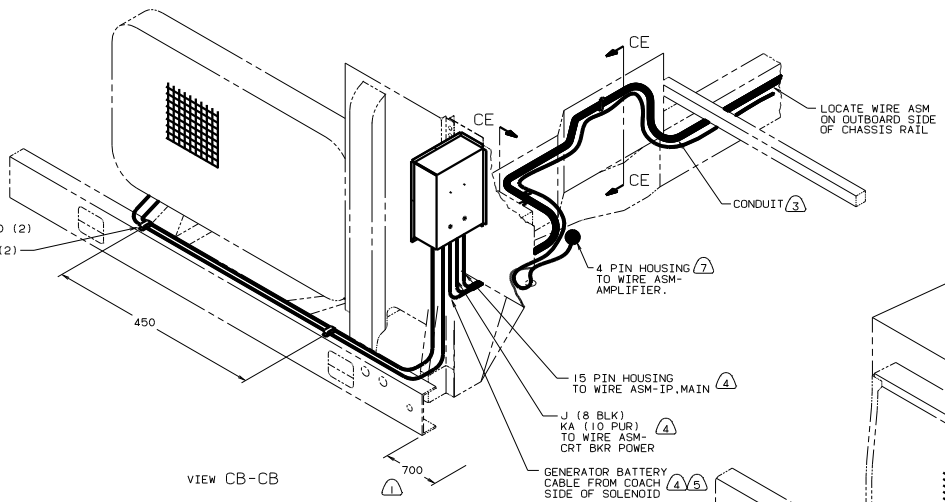
99 F & G35C
 16D CHASSIS-FORD.GAS
 TITLE: WIRING INSTL-CHASSIS
 SHEET 2 OF 4
 130598



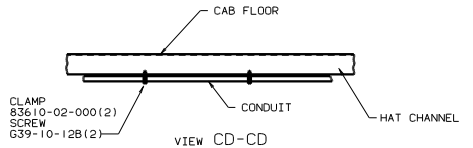
VIEW CE-CE



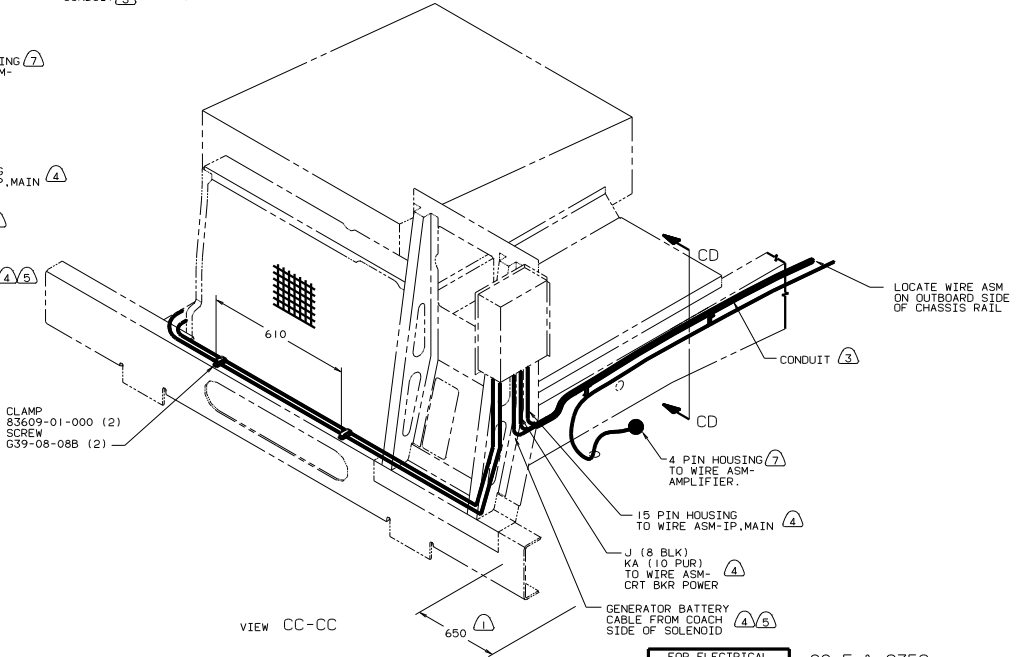
VIEW CA-CA



VIEW CB-CB



VIEW CD-CD



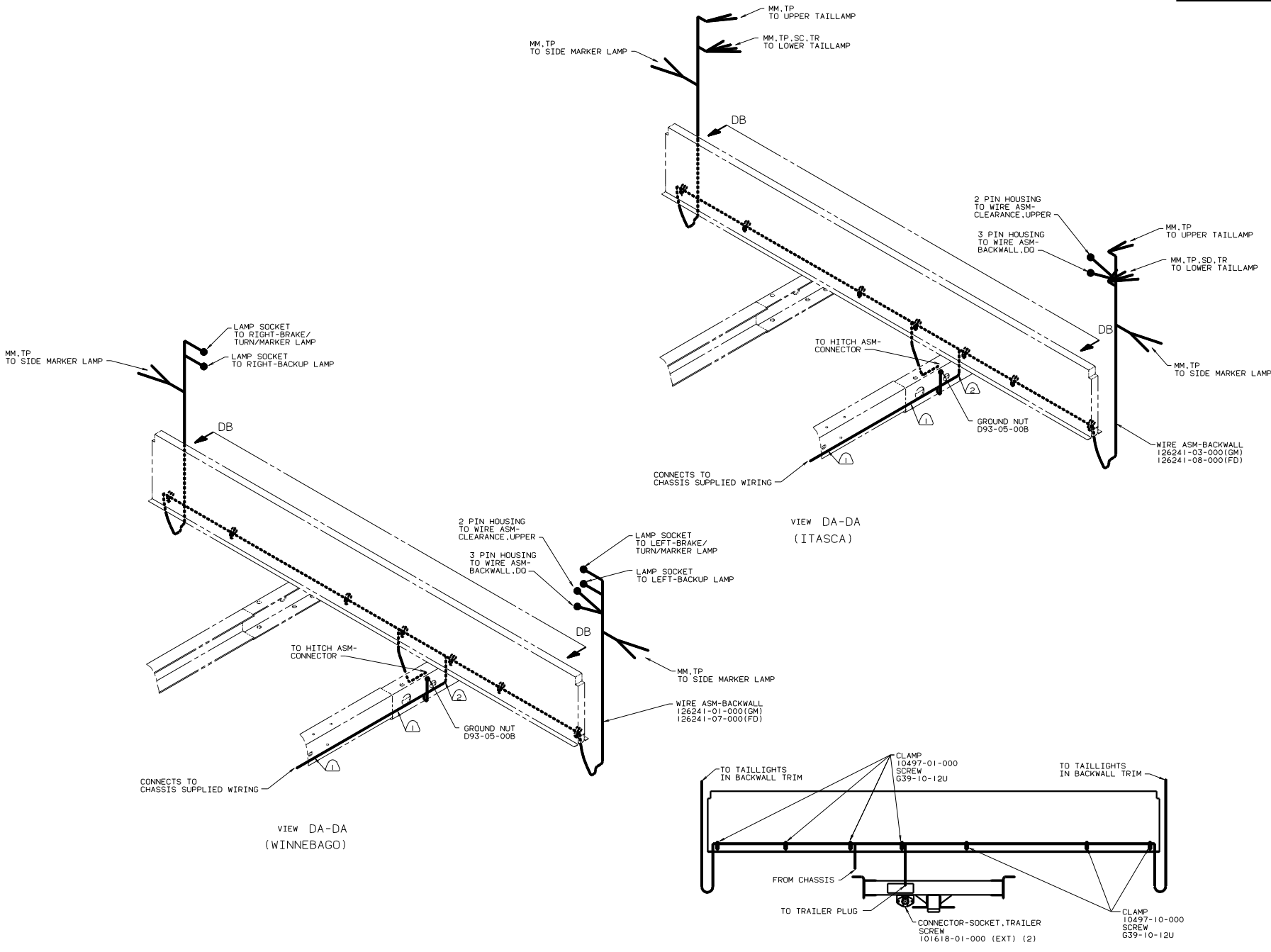
VIEW CC-CC

- ① WITH DELUXE SOUND. (21V)
- ② CUT OFF EXCESS END OF WIRE TIE.
- ③ CONNECT CABLES TO COACH SIDE OF BATTERY DISCONNECT WHEN BATTERY DISCONNECT IS USED.
- ④ FOR ADDITIONAL INFORMATION SEE WIRING INSTALATION FRONT END.
- ⑤ COVER WITH CONDUIT 41953-10-000 AND 41953-11-000 AS REQUIRED.
- ⑥ SUPPLIED WITH CHASSIS.
- ⑦ LAY BATTERY AND GENERATOR CABLES TO THIS DIMENSION FROM END OF CROSSMEMBER TO START INSTALLATION.

NOTES:

FOR ELECTRICAL TORQUE SPECIFICATIONS SEE DWG NO. 128783-01-000

| | |
|-----------------------------|----------|
| 99 F & G35C | |
| TITLE: WIRING INSTL-CHASSIS | |
| DRW NO. 130598 | REV 1 |
| SHEET 3 OF 4 | FILE NO. |



- NOTES:
- ② WIRE TO BE ROUTED ON BACK SIDE OF RISER.
 - ① WIRE TIE 8343-02. FASTEN TO FRAME AT LEAST ONCE EVERY 600MM.

FOR ELECTRICAL TORQUE SPECIFICATIONS SEE DWG NO. 128783-01-000

| | |
|---------------------|----------------------|
| 99 G35C ONLY | |
| TITLE | WIRING INSTL-CHASSIS |
| NO. OF SHEETS | 4 OF 4 |
| SHEET NO. | 4 |
| DWG NO. | 130598 |