



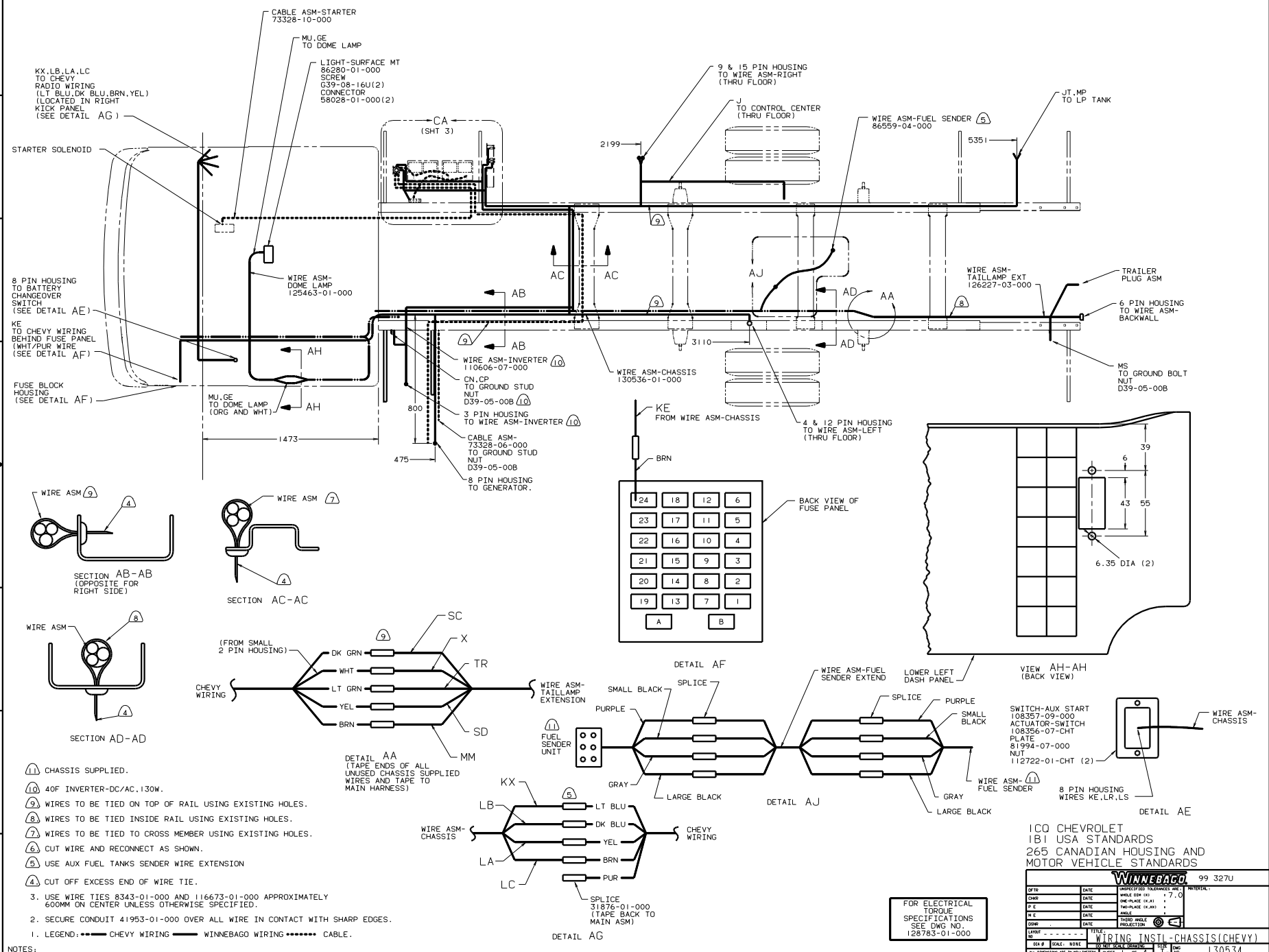
**DANGER**

**Danger of electrical shock, burns or death.** Always remove all power sources before attempting any repair, service or diagnostic work. Power can be present from shore power, generator, inverter or battery. All power sources must be disabled and secured before performing any service.



**CAUTION**

If you lack the skills, tools or equipment to perform diagnostic or repair work leave such work to an authorized Winnebago Industries dealer or other qualified shop.



FOR ELECTRICAL TORQUE SPECIFICATIONS SEE DWG NO 128783-01-000

100 CHEVROLET  
 181 USA STANDARDS  
 265 CANADIAN HOUSING AND  
 MOTOR VEHICLE STANDARDS

DATE	DESCRIPTION	BY	CHKD
DATE	UNSPECIFIED TOLERANCES ARE MATERIAL.		
DATE	WELD DIM 1:1		
DATE	ONE-PLACE 1:1.51		
DATE	TWO-PLACE 1:1.51		
DATE	WELD		
DATE	INDUS WELD PRODUCTION		
DATE			

WINNEBAGO 99 327U

1. LEGEND: --- CHEVY WIRING - - - WINNEBAGO WIRING ..... CABLE.

2. SECURE CONDUIT 41953-01-000 OVER ALL WIRE IN CONTACT WITH SHARP EDGES.

3. USE WIRE TIES 8343-01-000 AND 116673-01-000 APPROXIMATELY 600MM ON CENTER UNLESS OTHERWISE SPECIFIED.

NOTES:

① CHASSIS SUPPLIED.

⑩ 40F INVERTER-DC/AC,130W.

⑨ WIRES TO BE TIED ON TOP OF RAIL USING EXISTING HOLES.

⑧ WIRES TO BE TIED INSIDE RAIL USING EXISTING HOLES.

⑦ WIRES TO BE TIED TO CROSS MEMBER USING EXISTING HOLES.

⑥ CUT WIRE AND RECONNECT AS SHOWN.

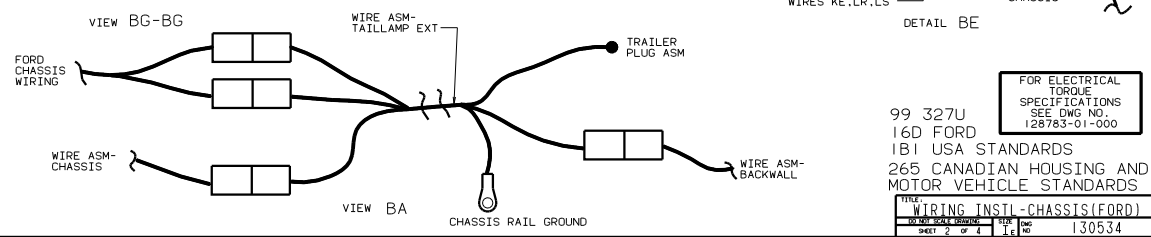
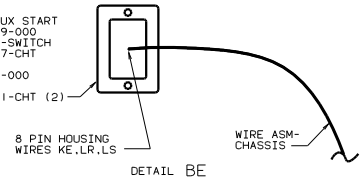
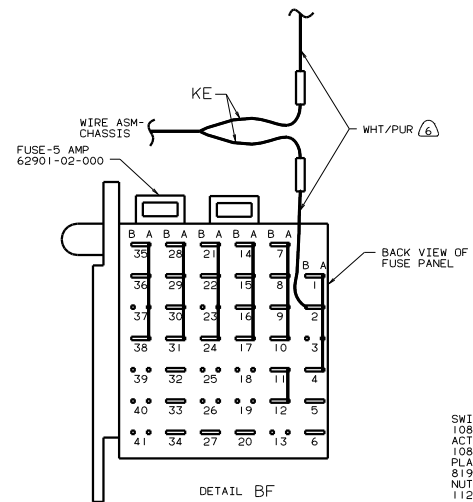
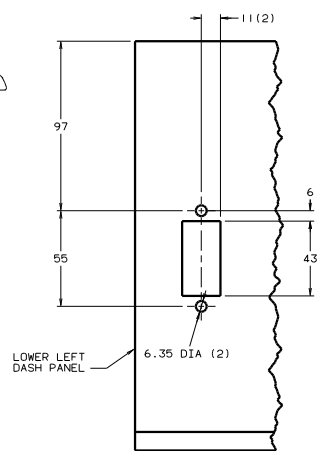
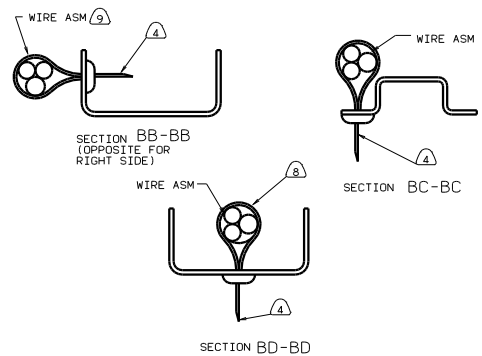
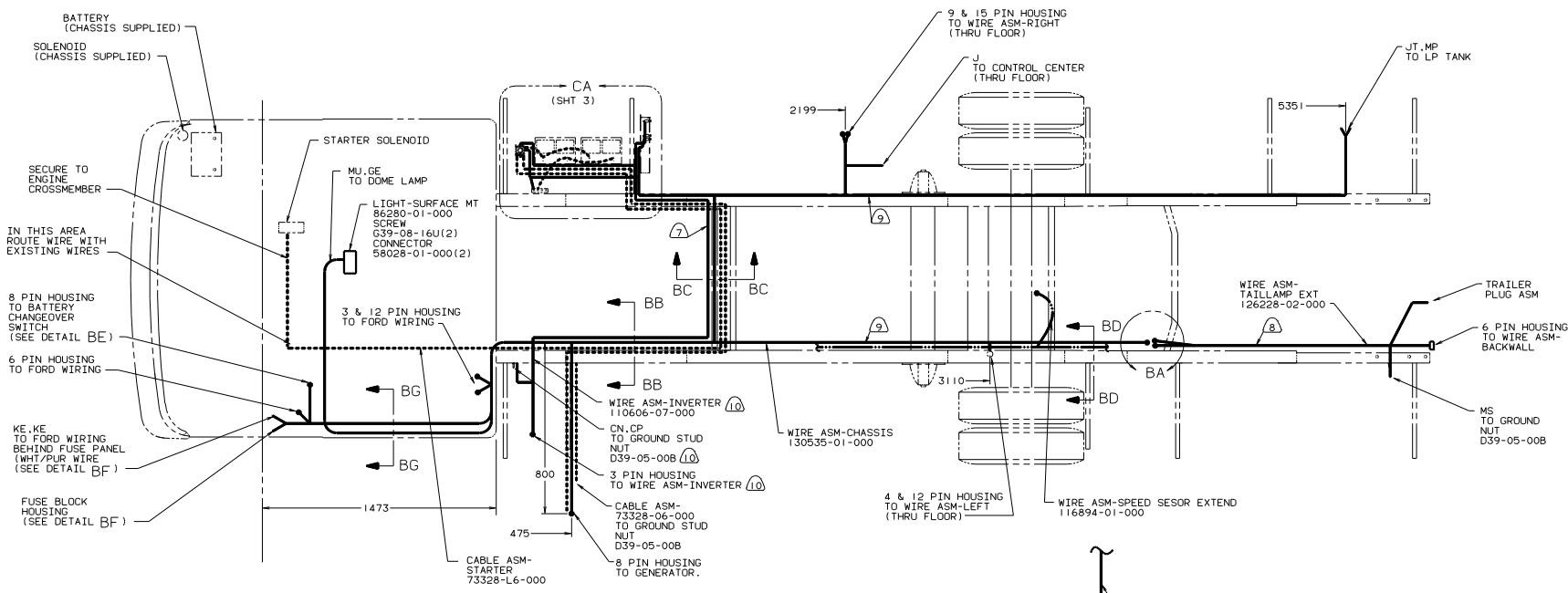
⑤ USE AUX FUEL TANKS SENDER WIRE EXTENSION

④ CUT OFF EXCESS END OF WIRE TIE.

WIRING INSTL-CHASSIS(CHEVY)

SHEET 1 OF 4

130534



- 10 40F INVERTER-DC/AC, 130W
- 9 WIRES TO BE TIED ON TOP OF RAIL USING EXISTING HOLES.
- 8 WIRES TO BE TIED INSIDE RAIL USING EXISTING HOLES.
- 7 WIRES TO BE TIED TO CROSS MEMBER USING EXISTING HOLES.
- 6 CUT WIRE AND RECONNECT AS SHOWN.
- 5 USE AUX FUEL TANKS SENDER WIRE EXTENSION (CHASSIS SUPPLIED).
- 4 CUT OFF EXCESS END OF WIRE TIE.
- 3 USE WIRE TIES 8343-01-000 AND 116673-01-000 APPROXIMATELY 600MM ON CENTER UNLESS OTHERWISE SPECIFIED.
- 2 SECURE CONDUIT 41953-01-000 OVER ALL WIRE IN CONTACT WITH SHARP EDGES.
- 1 LEGEND: ●●● FORD WIRING — WINNEBAGO WIRING ..... CABLE.

FOR ELECTRICAL TORQUE SPECIFICATIONS SEE DWG NO 128783-01-000

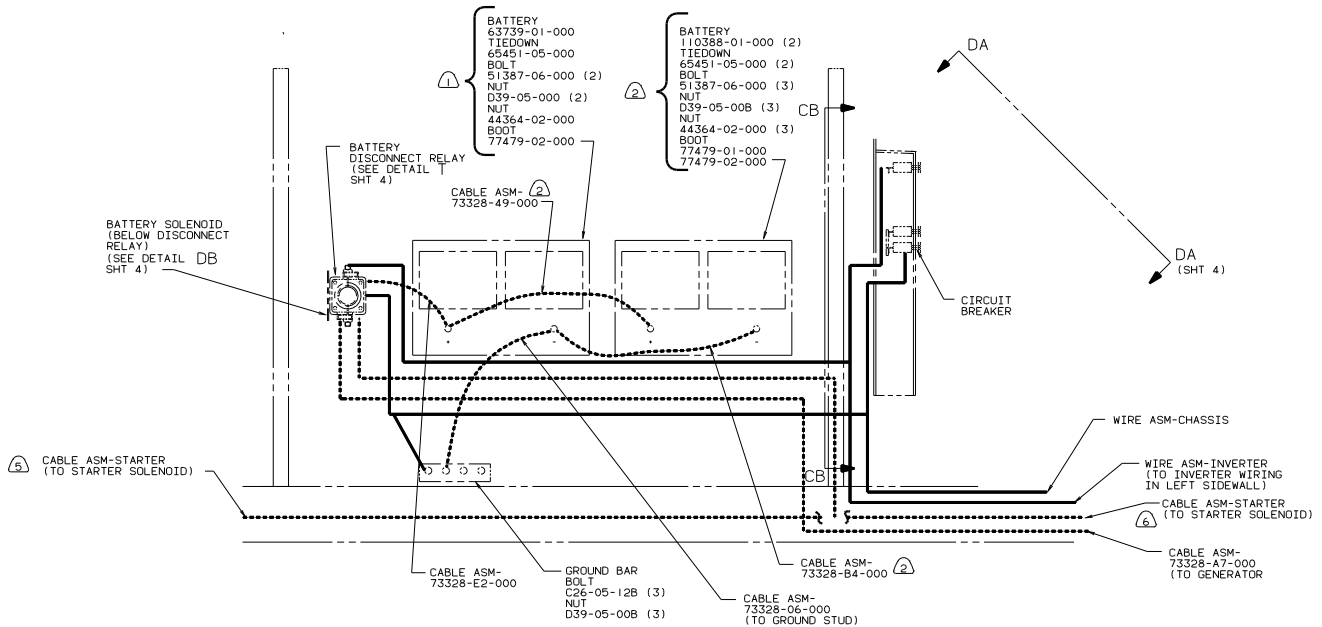
99 327U 16D FORD 1B1 USA STANDARDS 265 CANADIAN HOUSING AND MOTOR VEHICLE STANDARDS

WIRING INSTL-CHASSIS(FORD)

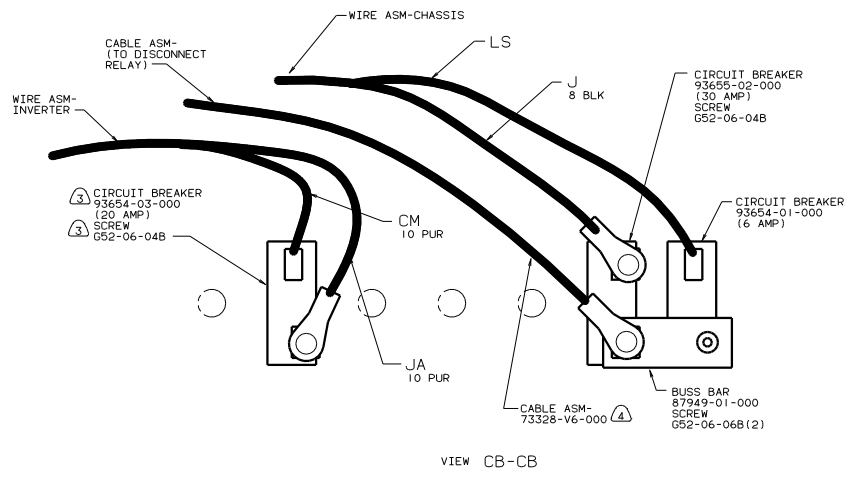
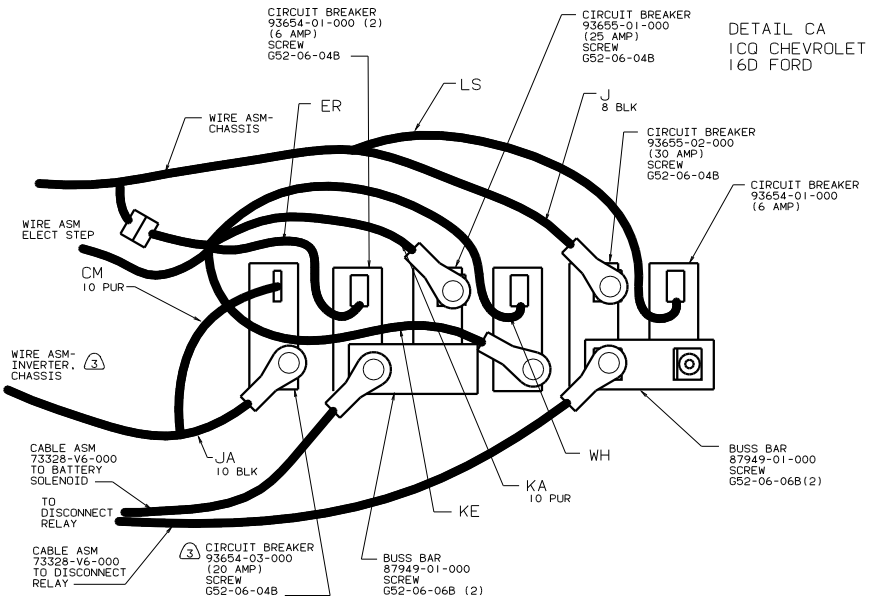
30-00 SCALE: 1:1

SHEET 2 OF 4

130534



DETAIL CA  
100 CHEVROLET  
16D FORD

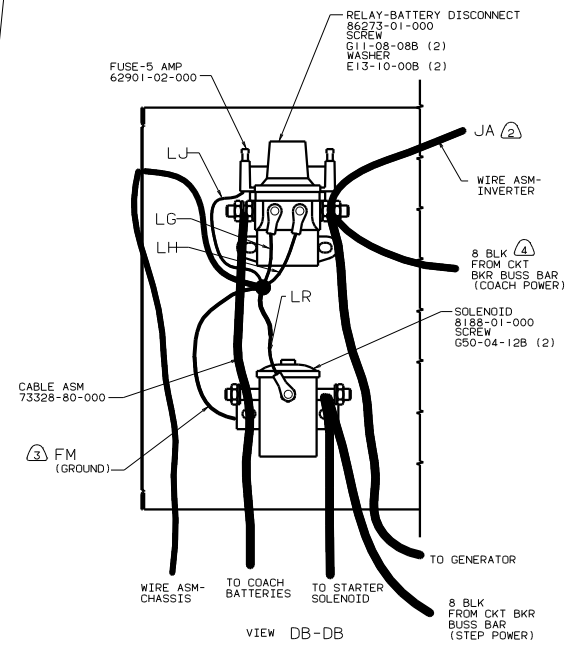
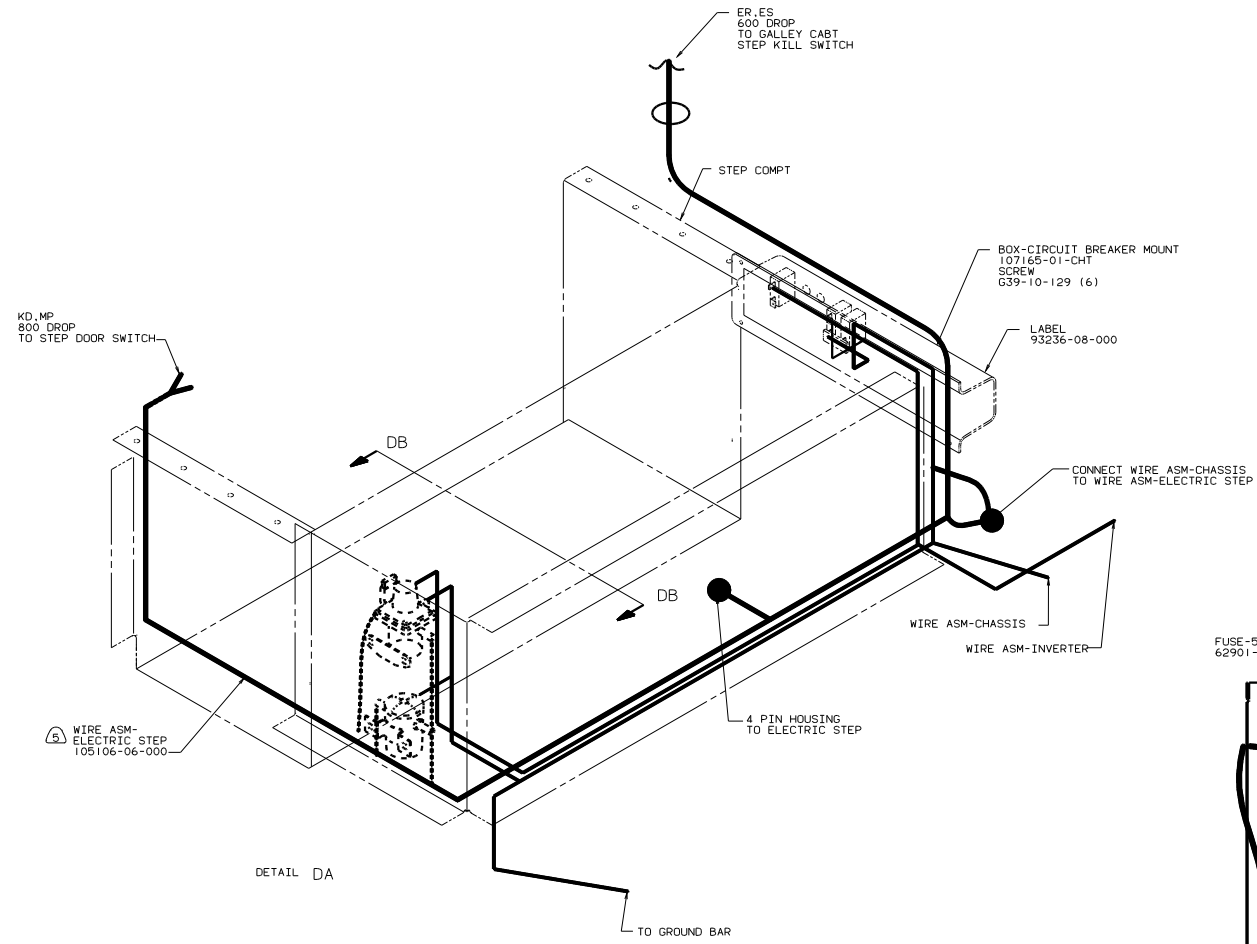


- ⑦ 1E2 DOOR,STEP-MAIN DOUBLE ELECTRIC W/DOOR JAMB SWITCH.
  - ⑥ 16D FORD.
  - ⑤ 100 CHEVROLET.
  - ④ MARKED WITH BLUE TAPE.
  - ③ 40F INVERTER-DC/AC, 130 WATT.
  - ② 22W BATTERY 2 DEEP CYCLE.
  - ① 12X BATTERY 1 DEEP CYCLE.
- VIEW CB-CB ⑦

FOR ELECTRICAL TORQUE SPECIFICATIONS SEE DWG NO. 128783-01-000

99 327U  
1B1 USA STANDARDS  
265 CANADIAN HOUSING AND MOTOR VEHICLE STANDARDS

TITLE: WIRING INSTL-CHASSIS  
SHEET 3 OF 4



- ⑤ 1E2 DOOR,STEP-MAIN DOUBLE ELECTRIC W/DOOR JAMB SWITCH.
- ④ MARKED WITH BLUE TAPE.
- ③ SECURE WITH SOLENOID MOUNTING BOLT.
- ② 40F INVERTER -DC/AC,130 WATT.
- ① LOCATE BOX HORIZONTALLY BY CENTERING ON HOLE IN COMPT.

NOTES:

FOR ELECTRICAL  
TORQUE  
SPECIFICATIONS  
SEE DWG NO.  
128783-01-000

99 327U  
181 USA STANDSRDS  
265 CANADIAN HOUSING AND  
MOTOR VEHICLE STANDARDS

TITLE		WIRING INSTL-CHASSIS	
NO. OF SHEETS	TOTAL SHEETS	REV.	DATE
4	4	1	130534