



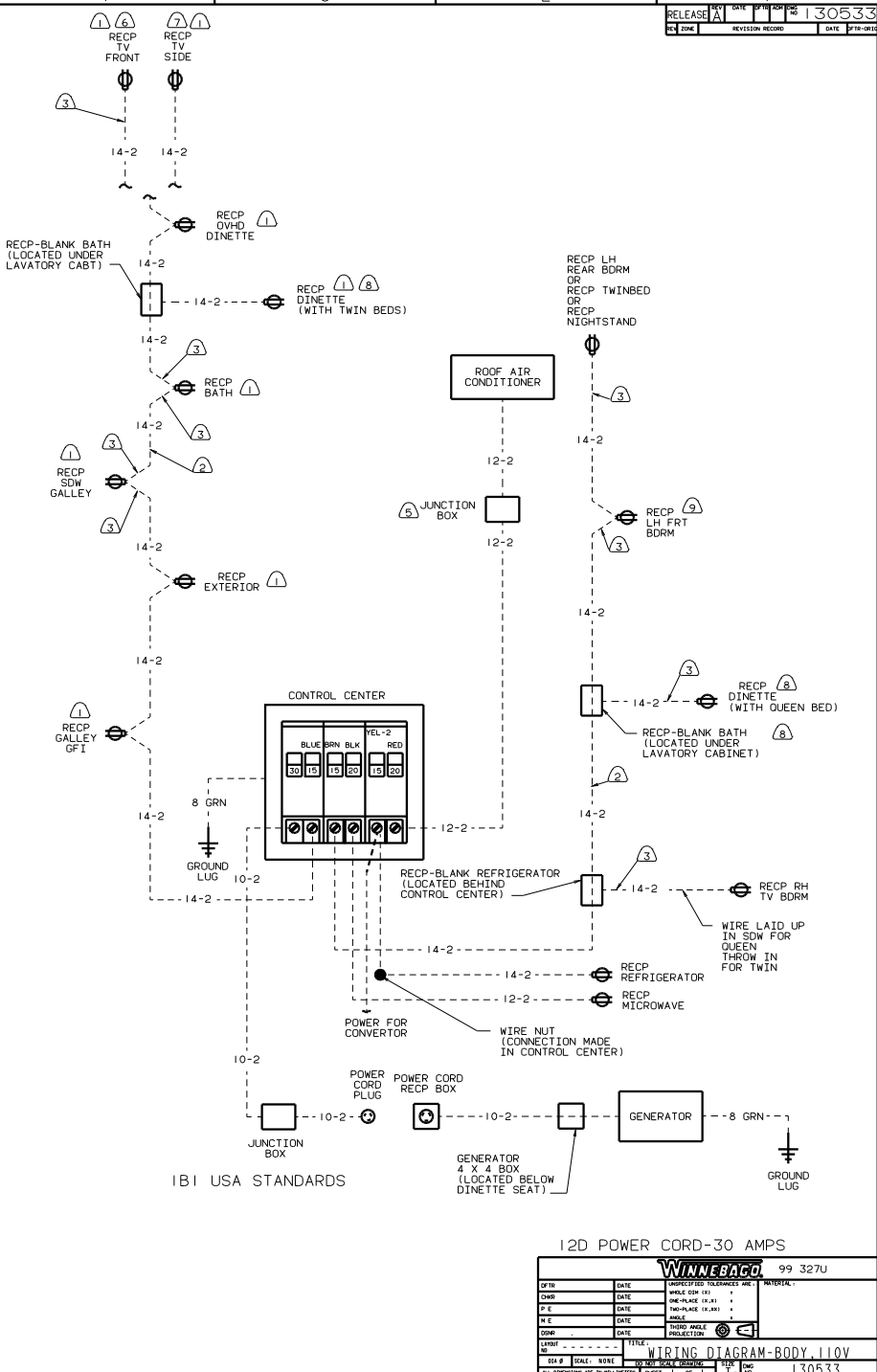
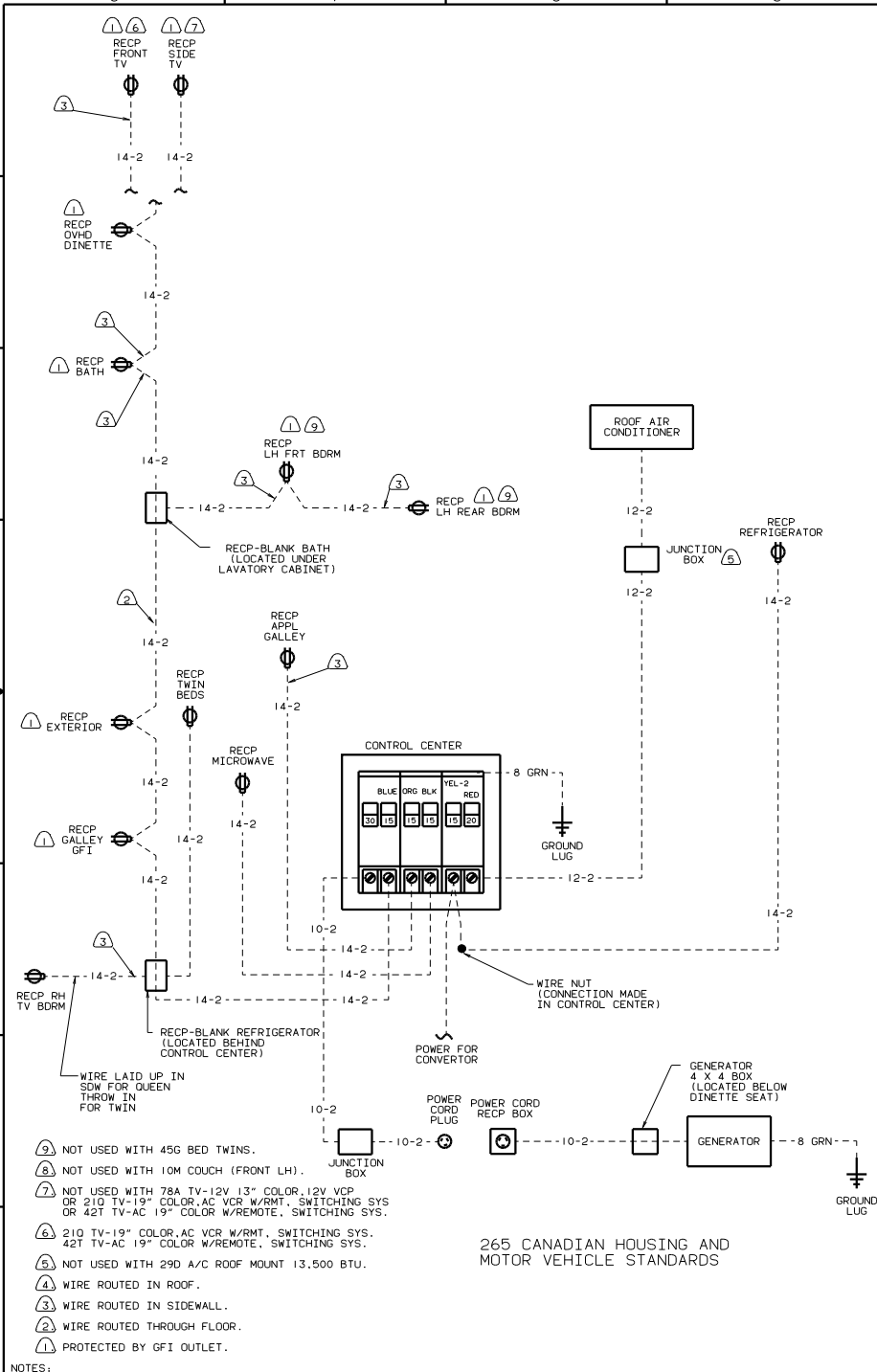
DANGER

Danger of electrical shock, burns or death. Always remove all power sources before attempting any repair, service or diagnostic work. Power can be present from shore power, generator, inverter or battery. All power sources must be disabled and secured before performing any service.



CAUTION

If you lack the skills, tools or equipment to perform diagnostic or repair work leave such work to an authorized Winnebago Industries dealer or other qualified shop.



- NOTES:
- ⑨ NOT USED WITH 45G BED TWINS.
 - ⑧ NOT USED WITH 10M COUCH (FRONT LH).
 - ⑦ NOT USED WITH 78A TV-12V 13" COLOR, 12V VCP OR 210 TV-19" COLOR, AC VCR W/RMT. SWITCHING SYS OR 42T TV-AC 19" COLOR W/REMOTE. SWITCHING SYS.
 - ⑥ 210 TV-19" COLOR, AC VCR W/RMT. SWITCHING SYS. 42T TV-AC 19" COLOR W/REMOTE. SWITCHING SYS.
 - ⑤ NOT USED WITH 29D A/C ROOF MOUNT 13,500 BTU.
 - ④ WIRE ROUTED IN ROOF.
 - ③ WIRE ROUTED IN SIDEWALL.
 - ② WIRE ROUTED THROUGH FLOOR.
 - ① PROTECTED BY GFI OUTLET.

WINNEBAGO		99 327U
OF IN	DATE	UNDESIGNED TOLERANCES ARE MATERIAL
CHP	DATE	WELD DIM 1/16"
DRP	DATE	ONE-PLACE 1/8"
DFE	DATE	TWO-PLACE 1/8"
DFE	DATE	ANGLE
COMB	DATE	INDIC. W/ANGLE PRODUCTION
LAINT	DATE	
TITLE: WIRING DIAGRAM-BODY, 110V		
REV #	SCALE	NO. OF SHEETS
1	1:1	1 OF 1
SHEET 1 OF 1		130533