



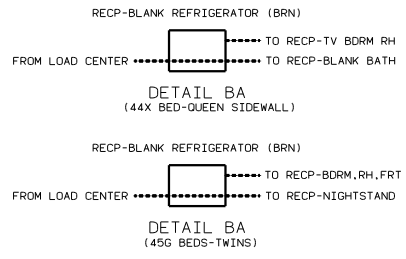
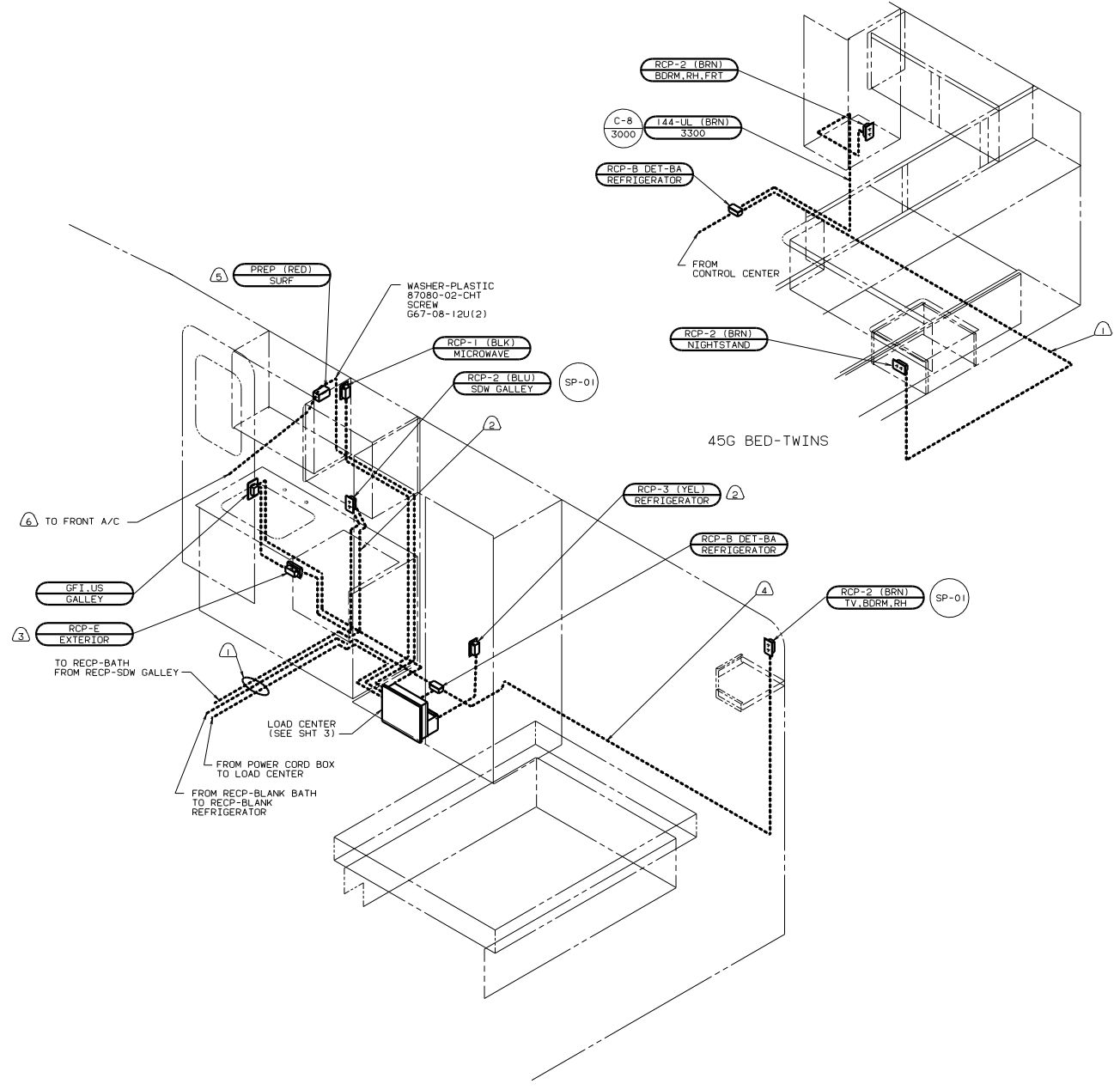
DANGER

Danger of electrical shock, burns or death. Always remove all power sources before attempting any repair, service or diagnostic work. Power can be present from shore power, generator, inverter or battery. All power sources must be disabled and secured before performing any service.



CAUTION

If you lack the skills, tools or equipment to perform diagnostic or repair work leave such work to an authorized Winnebago Industries dealer or other qualified shop.



- NOTES:
- ⑥ ROUTE WIRE IN ROOF.
 - ⑤ WITH GUT 29D A/C ROOF-MOUNT 13,500 BTU.
 - ④ WIRE ROUTED IN SIDEWALL.
 - ③ SEAL BACK SIDE OF RECP FACE.
 - ② ROUTE WIRE THRU SIDEWALL.
 - ① WIRE ROUTED THRU FLOOR.

44X BED-QUEEN SIDEWALL

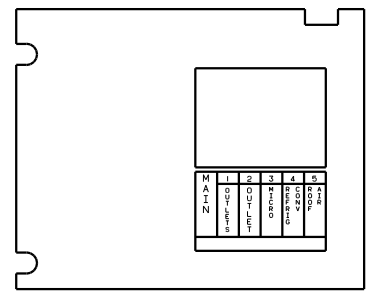
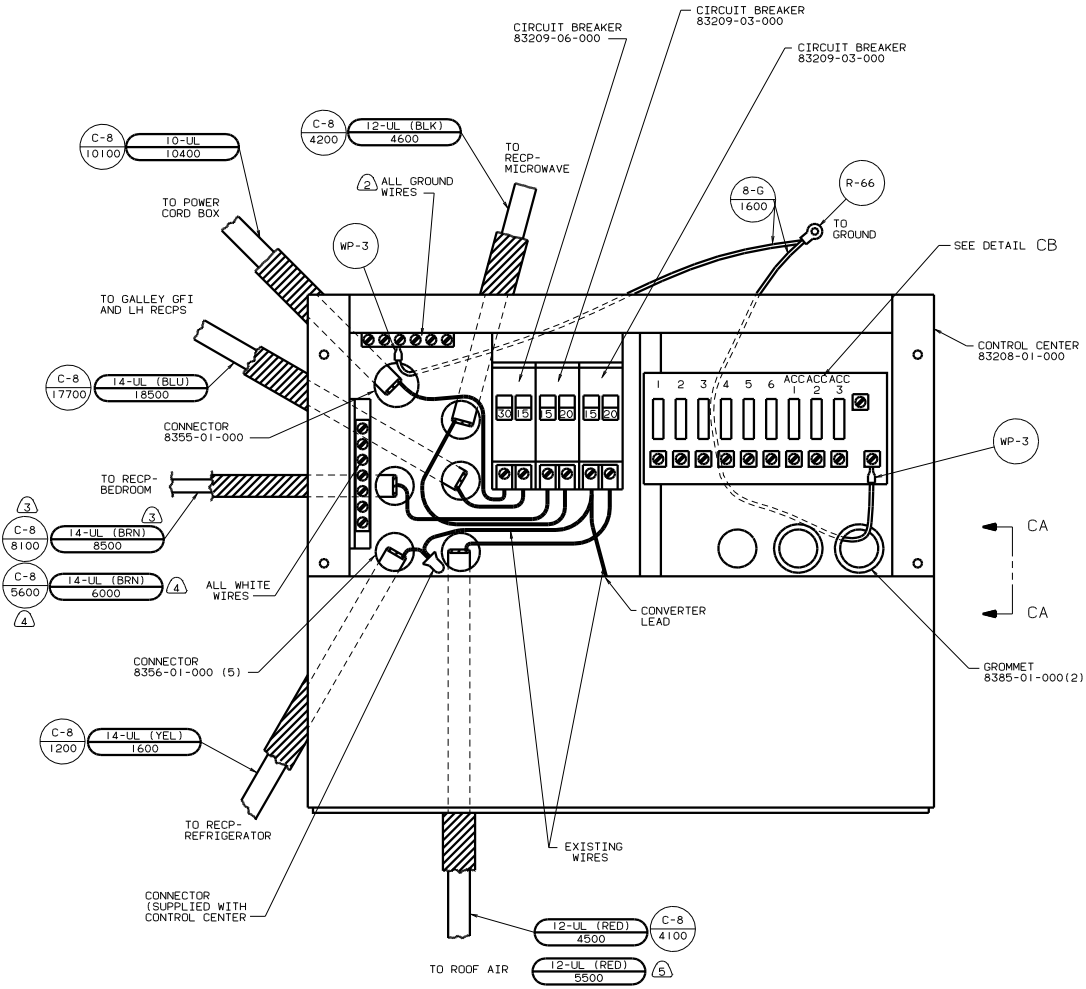
FOR ELECTRICAL TORQUE SPECIFICATIONS SEE DWG NO. 128783-01-000



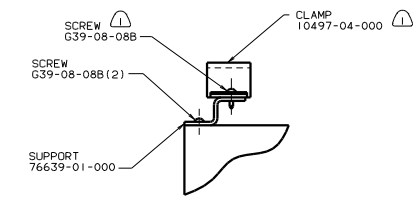
FOR ELECTRICAL CALLOUTS SEE DWG NO. 121339-01-000

99 327U
IBI USA STANDARDS
12D POWER CORD-30 AMPS

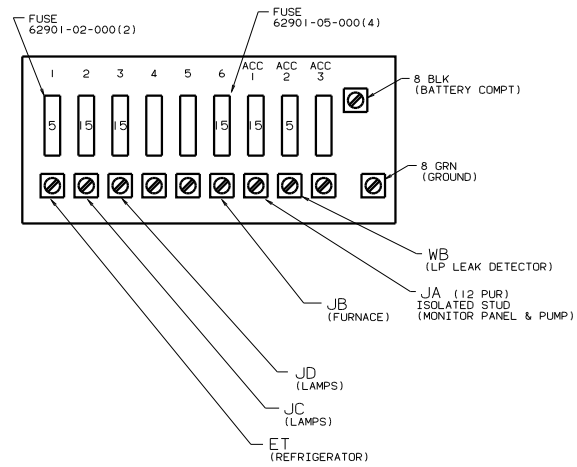
TITLE		130531	
WIRING INSTL-BODY (110R30US)			
NO. OF SHEETS	TOTAL SHEETS	SHEET NO.	TITLE
2	11	2	130531



PANEL-COVER



VIEW CA-CA



DETAIL CB

- NOTES:
- ⑤ 29D A/C ROOF MOUNT-13,500 BTU.
 - ④ 45G BED-TWINS.
 - ③ 44X BED-QUEEN SIDEWALL.
 - ② ALL GROUND WIRES TO BE COVERED WITH TUBING 8041-02-000.
 - ① FASTEN ALL WIRES TO SUPPORT. USE ONE SCREW PER CLAMP.

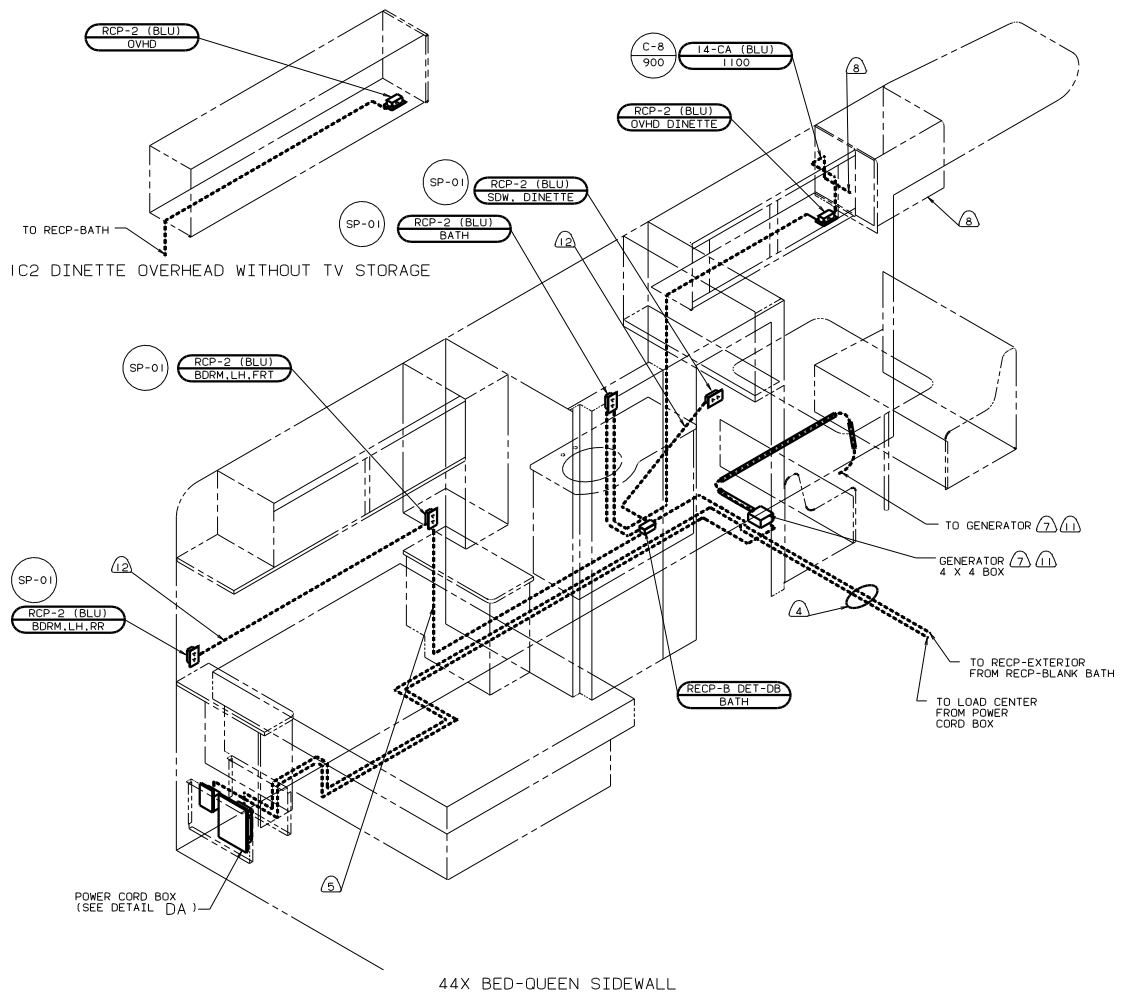
FOR ELECTRICAL TORQUE SPECIFICATIONS SEE DWG NO. 128783-01-000

X-X

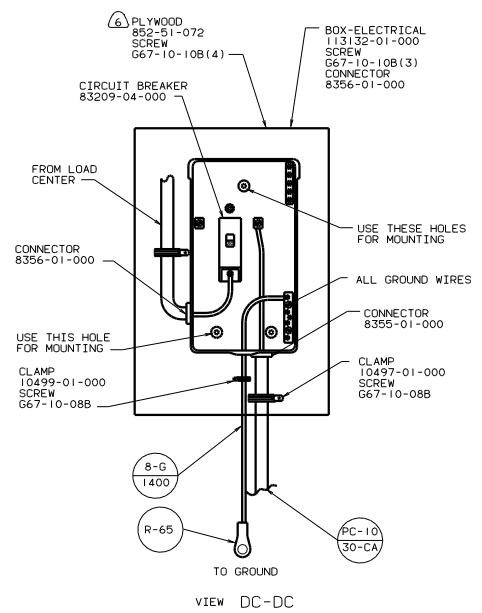
FOR ELECTRICAL CALL-OUTS SEE DWG NO. 121339-01-000

99 327U
1B1 USA STANDARDS
12D POWER CORD-30 AMPS

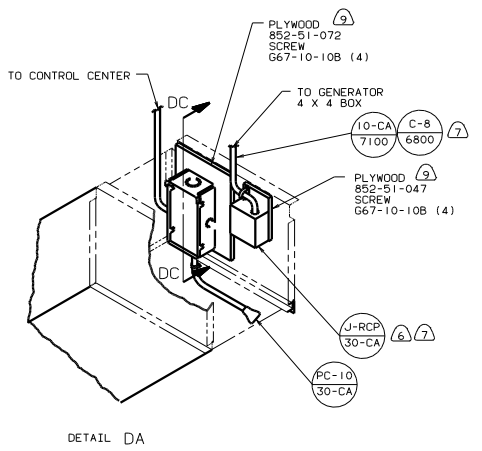
FILE	121339-01-000	REV	1.0
DATE	11/11/00	BY	J.E.
SHEET	3 OF 11	FIG. NO.	130531



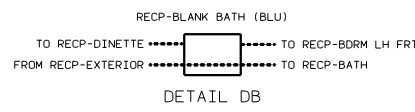
44X BED-QUEEN SIDEWALL



VIEW DC-DC



DETAIL DA



DETAIL DB

- ⑨ PAINT EXPOSED SURFACE BLACK WITH 106112-01-000.
- ⑧ SEE WIRING INSTL-TV/VCR. SIDE FOR ADDITIONAL INFORMATION.
- ⑦ 40N GENERATOR-4000 WATT, ONAN MICROLITE GAS.
- ⑥ INSTALL RECEPTACLE WITH GROUND TOWARD OUTBOARD SIDE OF VEHICLE.
- ⑤ ROUTE WIRE IN SIDEWALL.
- ④ WIRE ROUTED THRU FLOOR.
- 3. ALL GROUND WIRES TO BE COVERED WITH TUBING 8041-02-000.
- 2. ALL 110V WIRES ARE TO BE CLAMPED WITH CLAMP 10497-01-000 WITHIN 200 OF OUTLET BOXES. USE SCREW 667-10-12B.
- 1. ALL WIRES TO BE CLAMPED WITH CLAMP 10495-01-000 OR CLIP 80734-01-000 EVERY 600. USE SCREW 667-10-12B UNLESS OTHERWISE SPECIFIED.

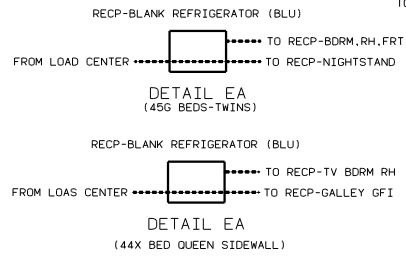
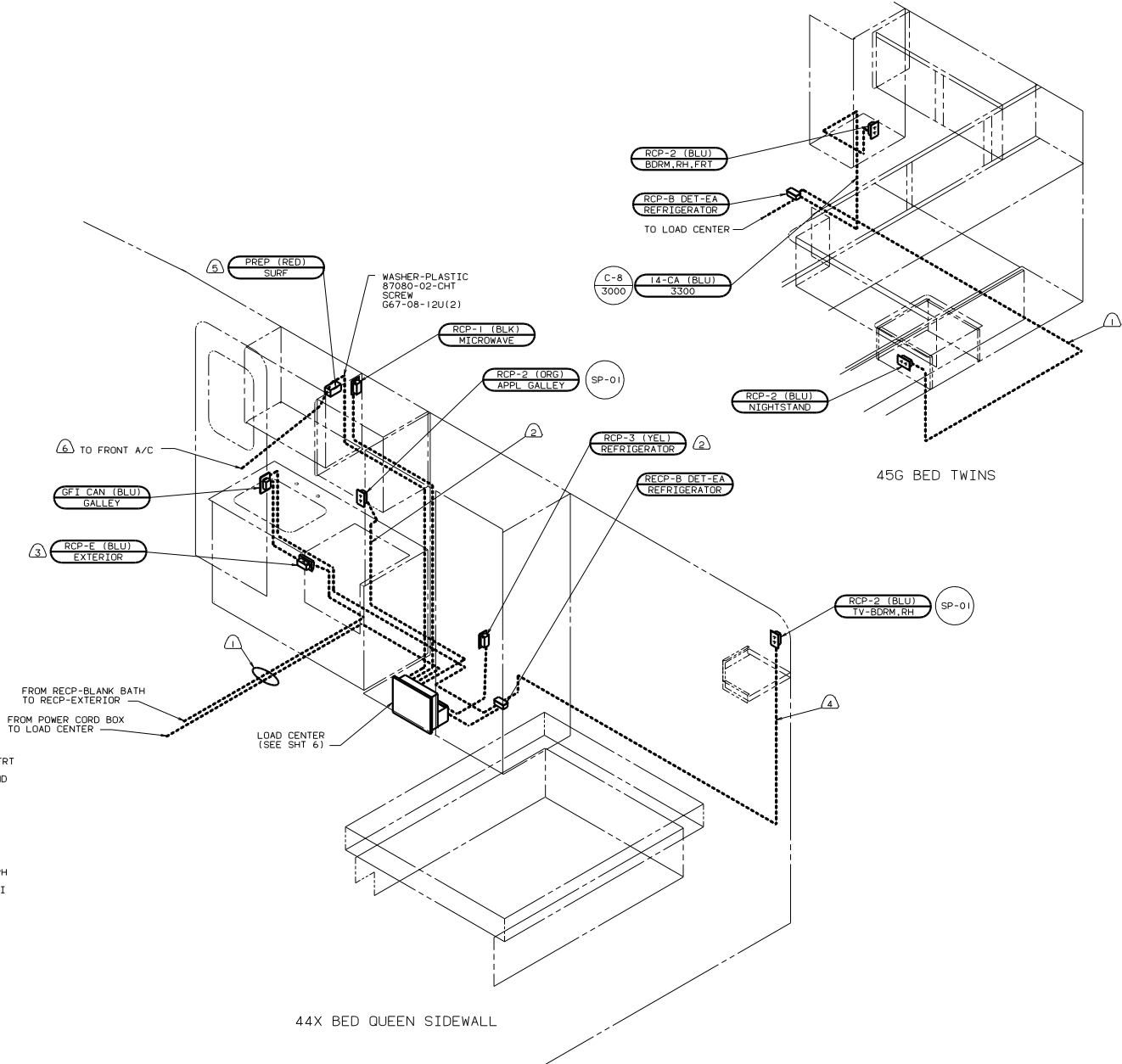
- ⑫ WIRE ROUTED IN SIDEWALL.
- ⑪ SEE GENERATOR INSTL FOR ADDITIONAL INFORMATION.
- ⑩ NOT USED WITH 210 TV-AC 19" COLOR AC VCR W/RMT SWITCHING SYS & SINGLE BUNK 42T TV-AC 19" COLOR W/REMOTE SWITCHING SYS & SINGLE BUNK

FOR ELECTRICAL TORQUE SPECIFICATIONS SEE DWG NO. 128783-01-000

FOR ELECTRICAL CALLOUTS SEE DWG NO. 121339-01-000

99 327U
12D POWER CORD-30 AMPS
265 CANADIAN HOUSING AND MOTOR VEHICLE STANDARDS

WIRING INSTL-BODY (110130CAN)
SHEET 4 OF 11
130531

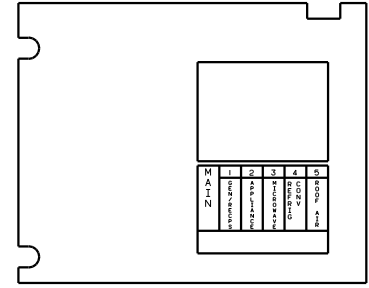
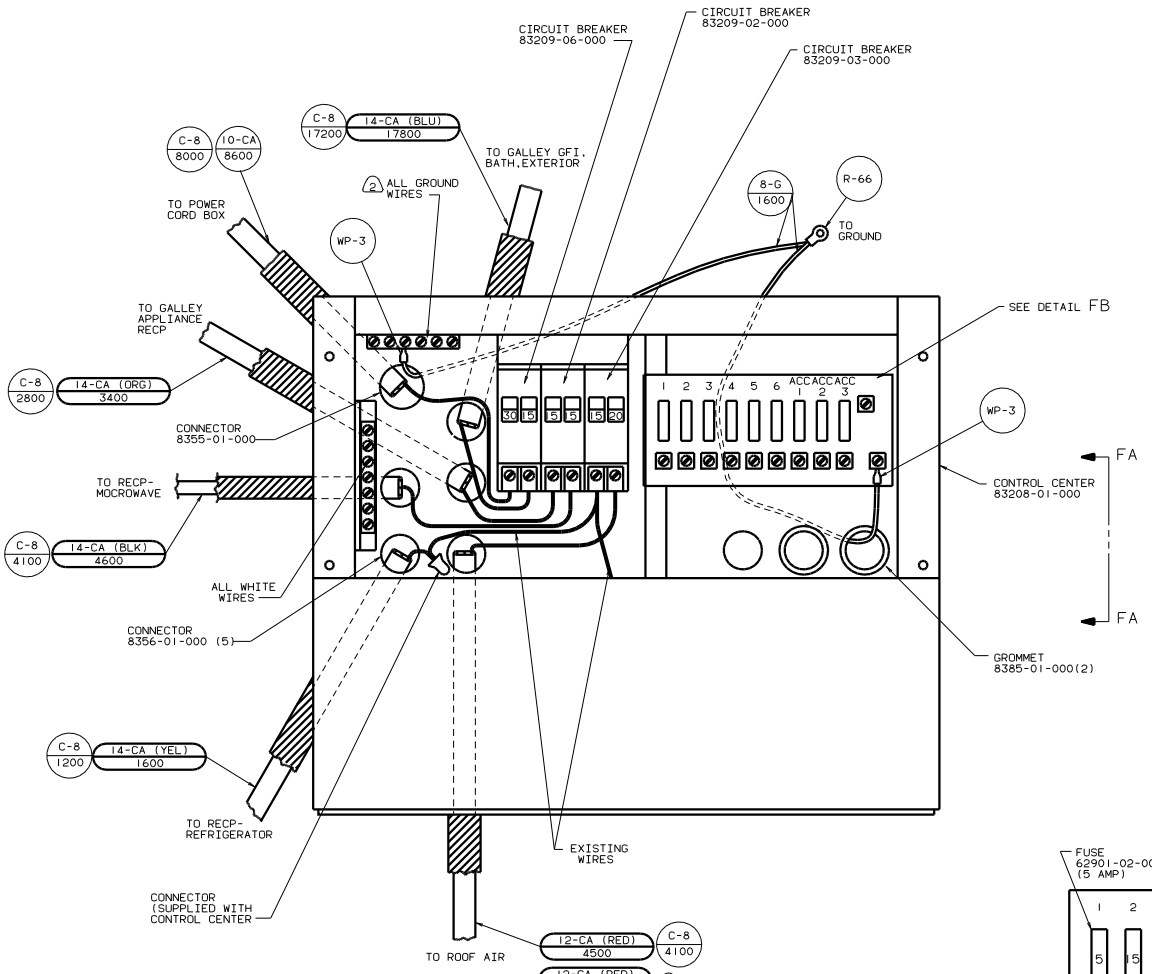


- (6) ROUTE WIRE IN ROOF.
 (5) WITH OUT 29D A/C ROOF-MOUNT 13,500 BTU.
 (4) WIRE ROUTED IN SIDEWALL.
 (3) SEAL BACK SIDE OF RECP FACE.
 (2) ROUTE WIRE IN SIDEWALL.
 (1) WIRE ROUTED THRU FLOOR.

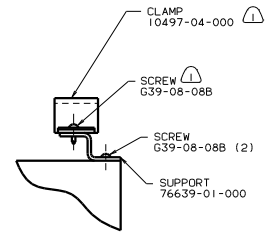
FOR ELECTRICAL
 TORQUE
 SPECIFICATIONS
 SEE DWG NO.
 128783-01-000

FOR
 ELECTRICAL
 CALLOUTS
 SEE DWG NO.
 121339-01-000

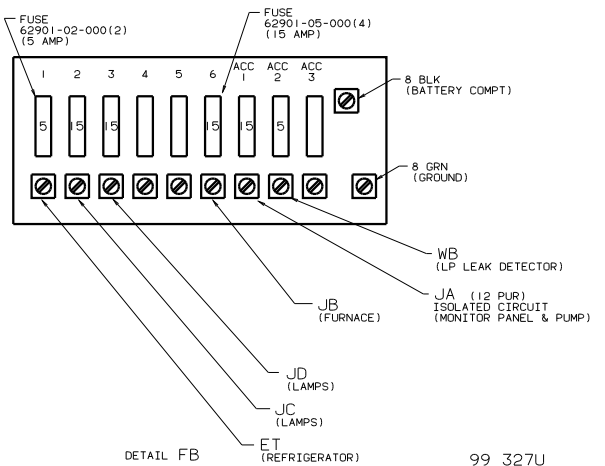
99 327U
 12D POWER CORD-30 AMPS
 265 CANADIAN HOUSING AND
 MOTOR VEHICLE STANDARDS
 TITLE: WIRING INSTL-BODY (110R30CAN)
 SHEET 5 OF 11



PANEL-COVER



VIEW FA-FA



DETAIL FB

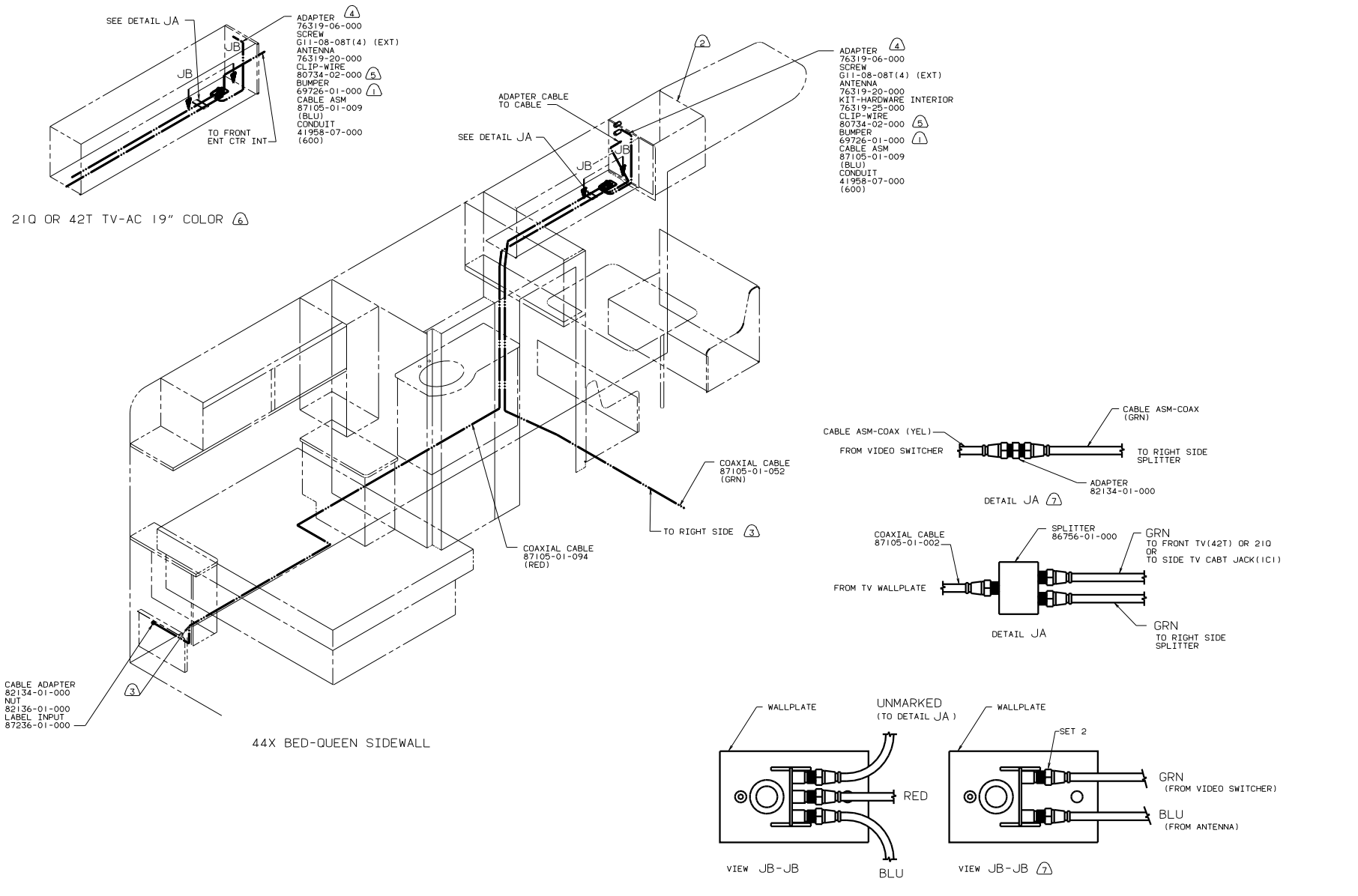
- NOTES:
- ③ 29D A/C ROOF MOUNT 13,500 BTU.
 - ② ALL GROUND WIRES TO BE COVERED WITH TUBING 8041-02-000.
 - ① FASTEN ALL WIRES TO SUPPORT. USE ONE SCREW PER CLAMP.

FOR ELECTRICAL TORQUE SPECIFICATIONS SEE DWG NO. 128783-01-000

FOR ELECTRICAL CALLOUTS SEE DWG NO. 121339-01-000

99 327U
12D POWER CORD-30 AMPS
265 CANADIAN HOUSING AND MOTOR VEHICLE STANDARDS

WIRING INSTL-BODY(30 CC CAN)
SHEET 6 OF 11



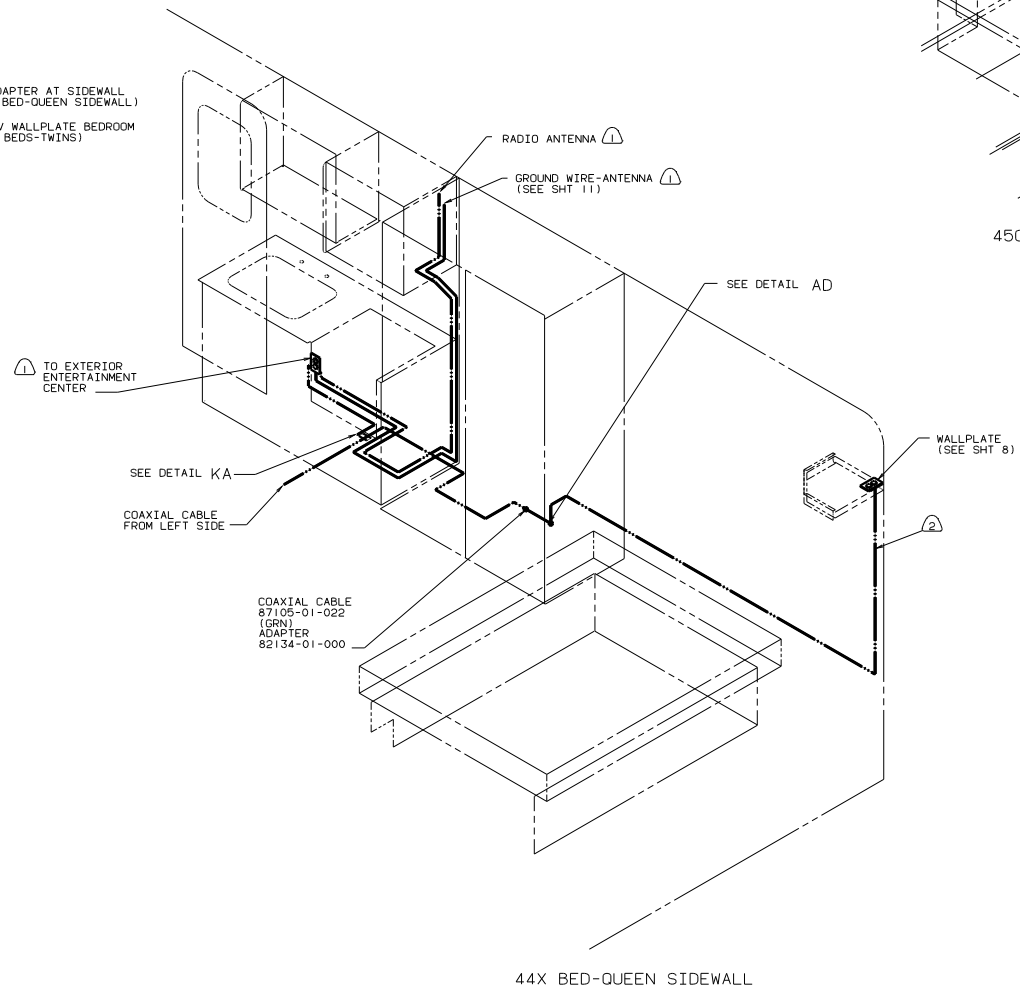
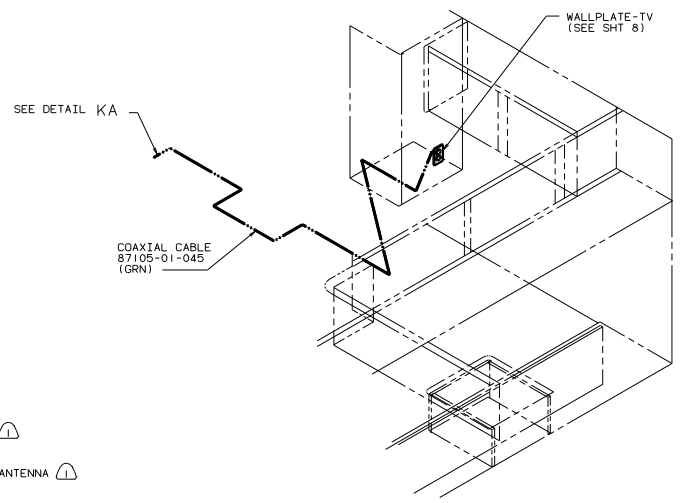
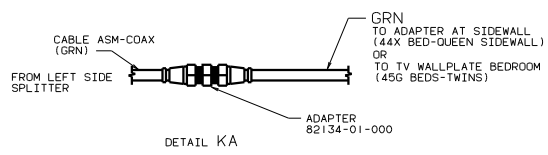
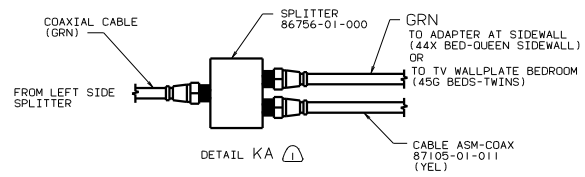
- (1) 21Q, TV-19" COLOR, A/C VCR W/REMT. SWITCHING SYM. OR 42T TV-AC 19" COLOR W/REMOTE, SWITCHING SYS.
- (2) SEE WIRING INSTL-TV/VCR,FRONT FOR ADDITIONAL INFORMATION.
- (3) LOCATE TO RETAIN CABLE BUT NOT TO RESTRICT ANTENNA TRAVEL.
- (4) SEE DRAWING 76319-01-000 FOR INSTALLATION OF TV ANTENNA.
- (5) ROUTED THROUGH FLOOR, ADD CONDUIT 41953-07-000 600 BELOW FLOOR
- (6) SEE WIRING INSTL-TV/VCR,SIDE FOR ADDITIONAL INFORMATION.
- (7) ADD RUBBER BUMPER TO ROOF UNDER EACH END OF ANTENNA IN DOWN POSITION WHICH MAY COME INTO CONTACT WITH ROOF.

NOTES:

FOR ELECTRICAL TORQUE SPECIFICATIONS SEE DWG NO. 128783-01-000

99 327U
IB1 USA STANDARDS
265 CANADIAN HOUSING AND MOTOR VEHICLE STANDARDS

TITLE		DRAWING NO.	
WIRING INSTL-BODY(COAX L)		130531	
BY	CHK	DATE	REV
SHEET 9 OF 11		1 E	

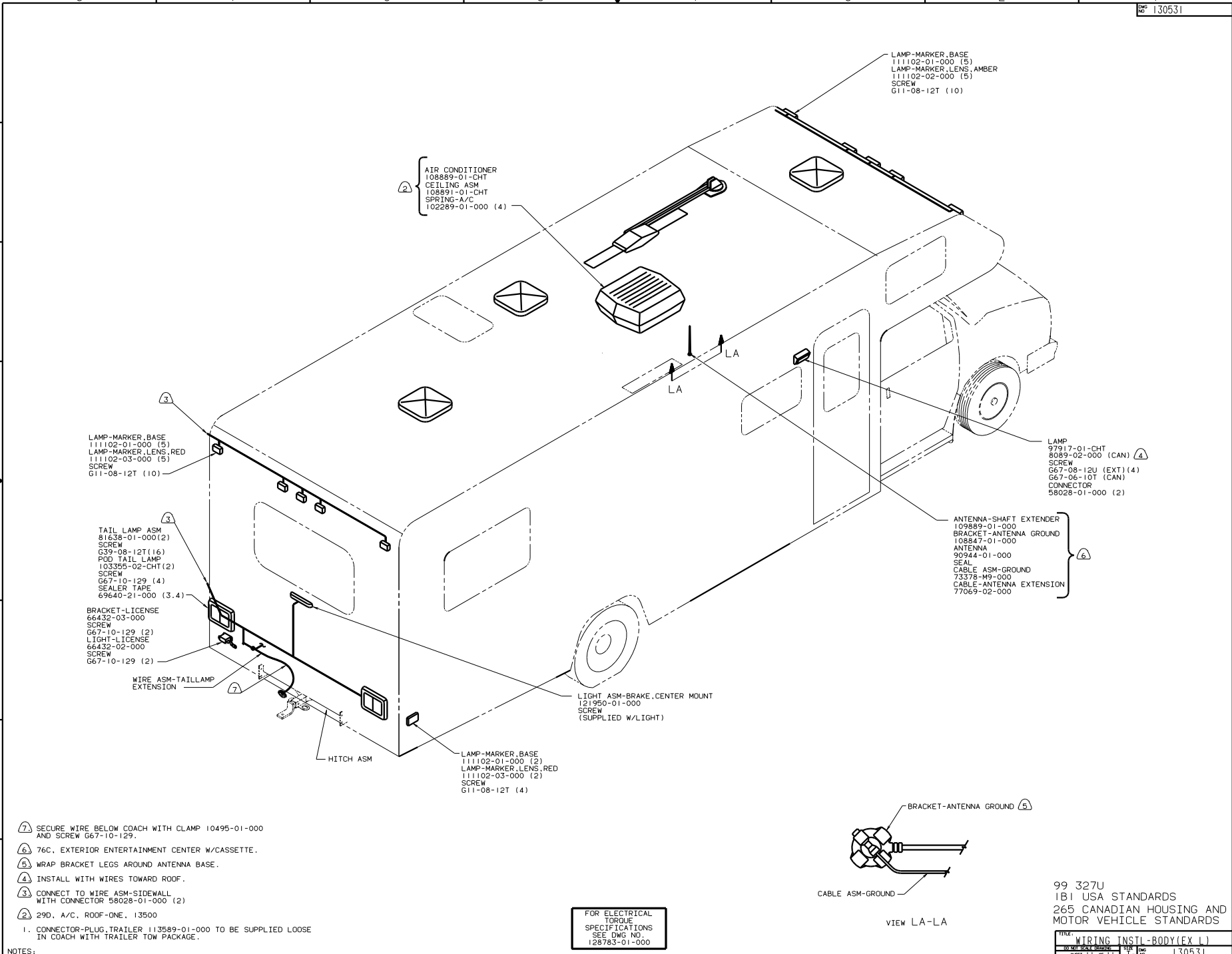


- NOTES:
- ② COAX ROUTED IN SIDEWALL.
 - ① 76C EXTERIOR ENTERTAINMENT CENTER W/CASSETTE.

FOR ELECTRICAL TORQUE SPECIFICATIONS SEE DWG NO. 128783-01-000

99 327U
181 USA STANDARDS
265 CANADIAN HOUSING AND MOTOR VEHICLE STANDARDS

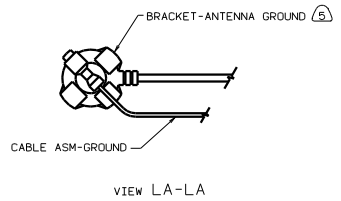
TITLE		DWG NO.	
WIRING INSTL-BODY(COAX R)		130531	
NO OF SHEETS	TOTAL SHEETS	SHEET NO.	TOTAL SHEETS
1	1	1	1



- ⑦ SECURE WIRE BELOW COACH WITH CLAMP 10495-01-000 AND SCREW G67-10-129.
- ⑥ 76C, EXTERIOR ENTERTAINMENT CENTER W/CASSETTE.
- ⑤ WRAP BRACKET LEGS AROUND ANTENNA BASE.
- ④ INSTALL WITH WIRES TOWARD ROOF.
- ③ CONNECT TO WIRE ASM-SIDEWALL WITH CONNECTOR 58028-01-000 (2)
- ② 29D, A/C, ROOF-ONE, 13500

1. CONNECTOR-PLUG,TRAILER 113589-01-000 TO BE SUPPLIED LOOSE IN COACH WITH TRAILER TOW PACKAGE.

FOR ELECTRICAL TORQUE SPECIFICATIONS SEE DWG NO. 128783-01-000



99 327U
IBI USA STANDARDS
265 CANADIAN HOUSING AND
MOTOR VEHICLE STANDARDS

TITLE	WIRING INSTL-BODY(EX L)
NO. OF SHEETS	11
SHEET NO.	11
DWG NO.	130531