



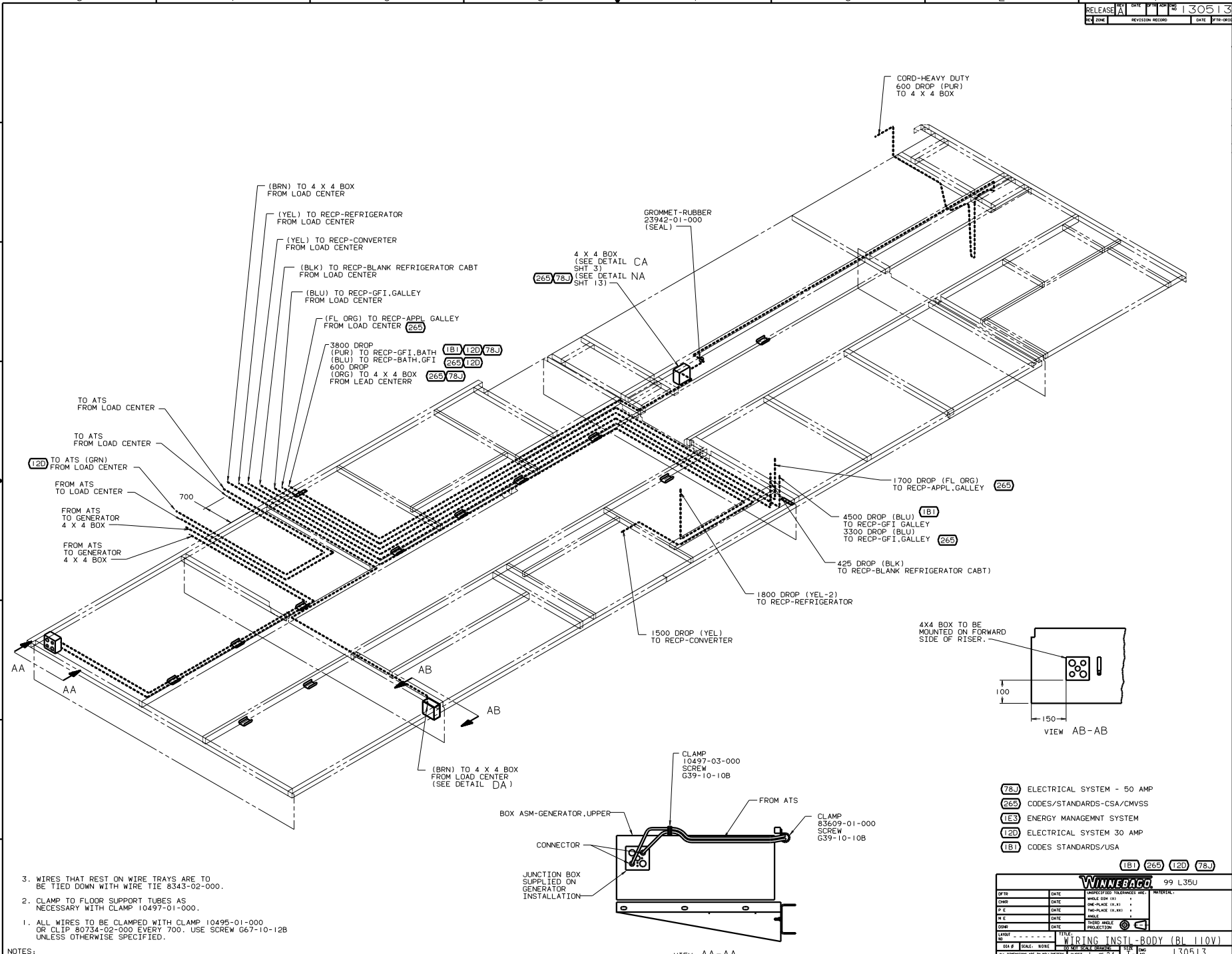
DANGER

Danger of electrical shock, burns or death. Always remove all power sources before attempting any repair, service or diagnostic work. Power can be present from shore power, generator, inverter or battery. All power sources must be disabled and secured before performing any service.



CAUTION

If you lack the skills, tools or equipment to perform diagnostic or repair work leave such work to an authorized Winnebago Industries dealer or other qualified shop.



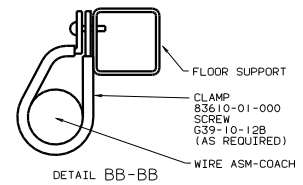
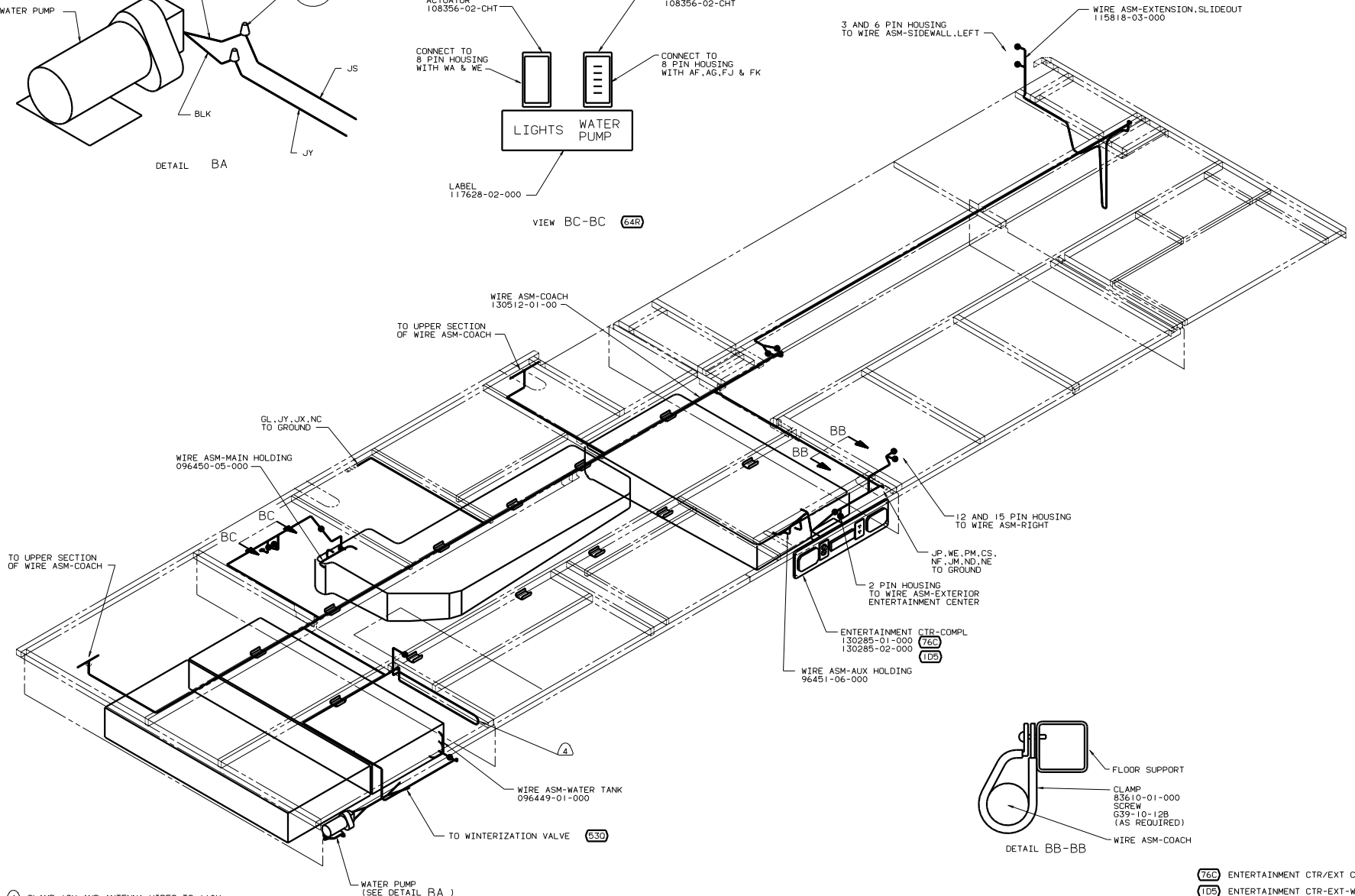
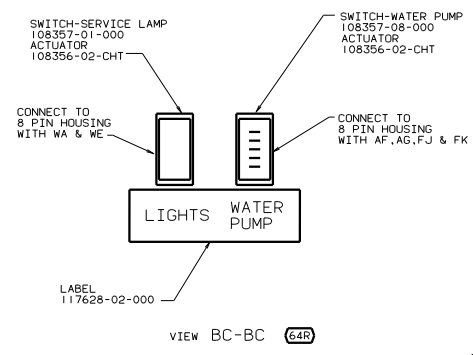
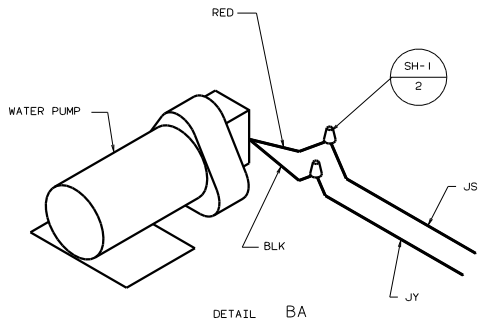
3. WIRES THAT REST ON WIRE TRAYS ARE TO BE TIED DOWN WITH WIRE TIE 8343-02-000.
2. CLAMP TO FLOOR SUPPORT TUBES AS NECESSARY WITH CLAMP 10497-01-000.
1. ALL WIRES TO BE CLAMPED WITH CLAMP 10495-01-000 OR CLIP 80734-02-000 EVERY 700. USE SCREW G67-10-12B UNLESS OTHERWISE SPECIFIED.

NOTES:

(78J) ELECTRICAL SYSTEM - 50 AMP
 (265) CODES/STANDARDS-CSA/CHVSS
 (1E3) ENERGY MANAGMNT SYSTEM
 (12D) ELECTRICAL SYSTEM 30 AMP
 (1B1) CODES STANDARDS/USA

(1B1) (265) (12D) (78J)

DRAWN BY		TITLE	
DATE	UNDESIGNED TOLERANCES ARE:	99 L35U	
DATE	WHOLE DIM (1:1)	WIRING INSTL-BODY (BL 110V)	
DATE	ONE-PLACE (1:1)	SHEET 1 OF 2	
DATE	TWO-PLACE (1:1)	130513	
DATE	MISC.		
DATE	INDIC. W/ANGLE		
DATE	PROJECTION		
DATE			

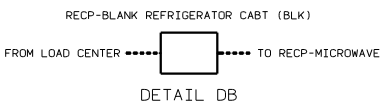
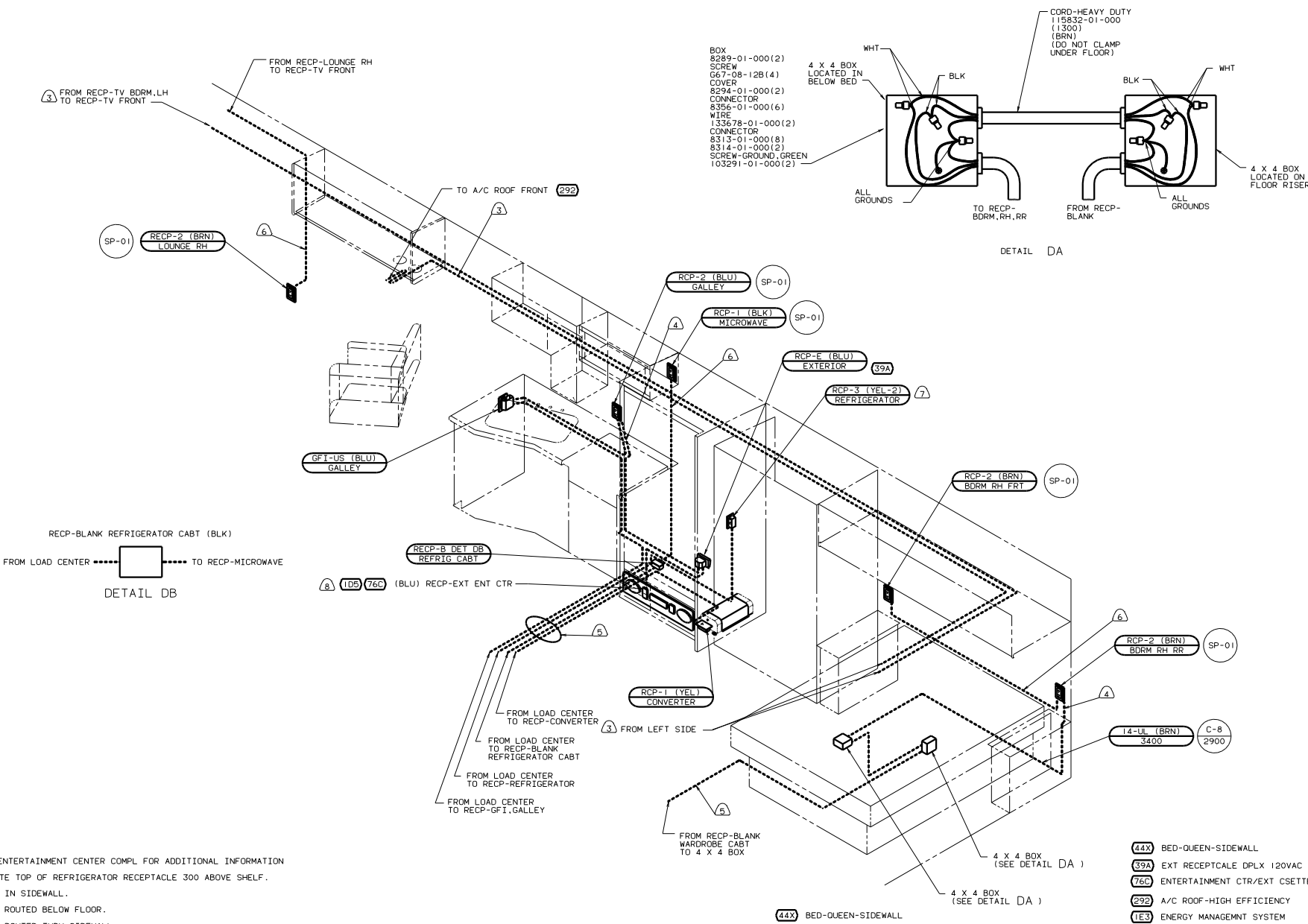


- NOTES:
- ④ CLAMP 12V AND ANTENNA WIRES TO 110V FLEX WIRE BELOW FLOOR.
 - 3. WIRES THAT REST ON WIRE TRAYS ARE TO BE TIED DOWN WITH WIRE TIE 8343-02-000.
 - 2. CLAMP TO FLOOR SUPPORT TUBES AS NECESSARY WITH CLAMP 10497-01-000.
 - 1. ALL WIRES TO BE CLAMPED WITH CLAMP 10495-01-000 OR CLIP 80734-02-000 EVERY 700. USE SCREW G67-10-12B UNLESS OTHERWISE SPECIFIED.

- (76C) ENTERTAINMENT CTR/EXT CSETTE
- (1D5) ENTERTAINMENT CTR-EXT-W/CD
- (64R) EXTERIOR WASH STATION
- (630) WINTERIZING KIT
- (265) CODES/STANDARDS-CSA/CMVSS
- (1B1) CODES STANDARDS/USA
- 99 L35U (1B1) (265)

FOR ELECTRICAL CALLOUTS SEE DWG NO. 121339-01-000

WIRING INSTL - BODY (BL 12V)
 SHEET 2 OF 2

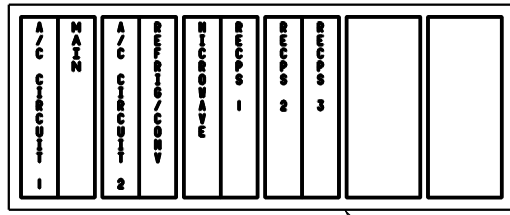
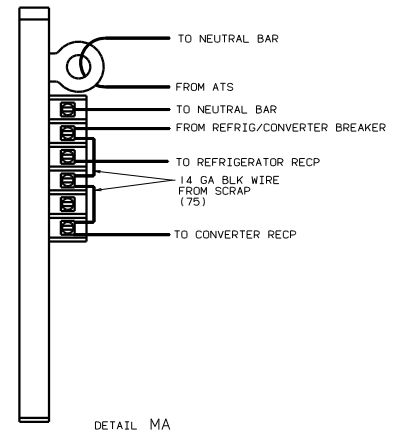
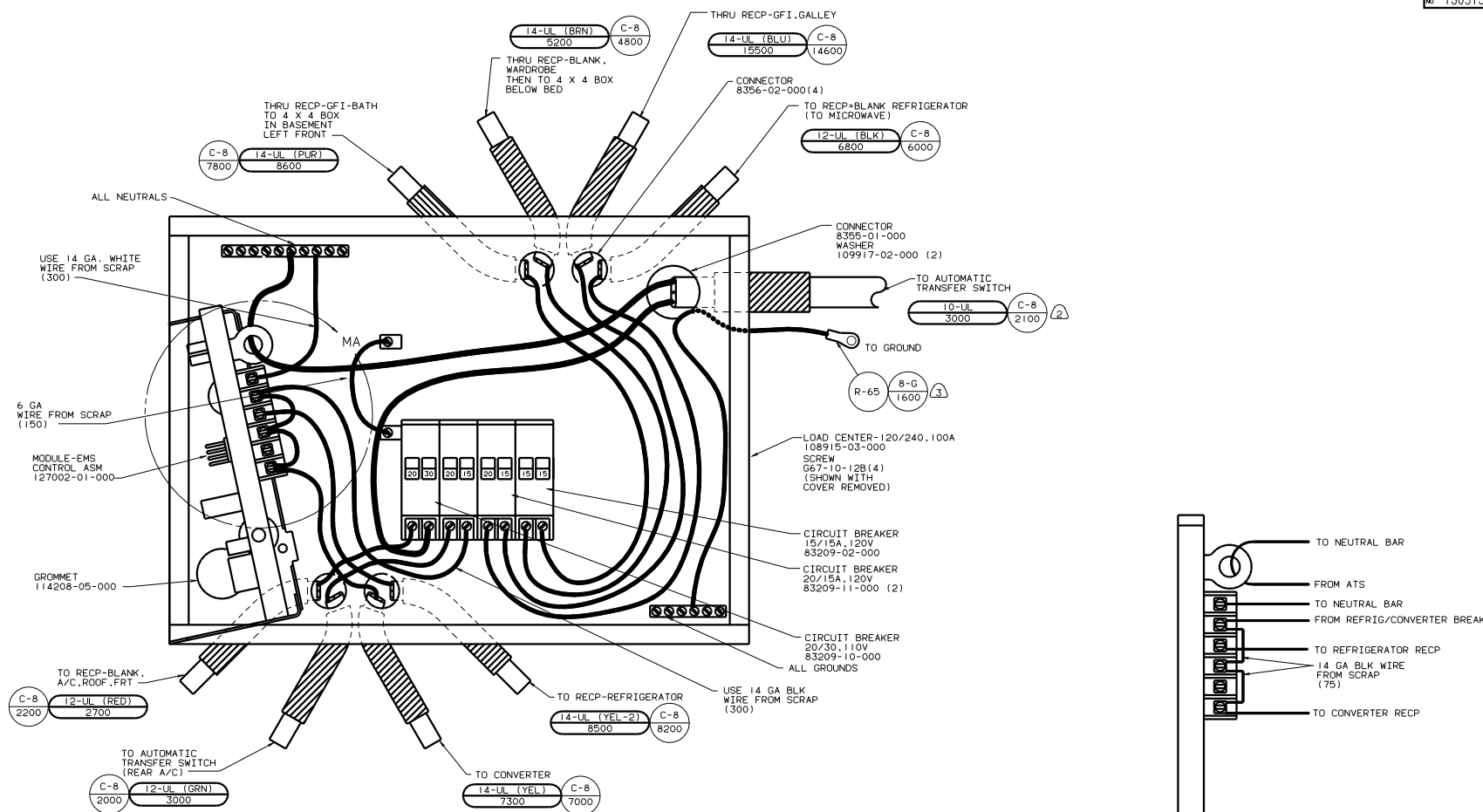


FOR ELECTRICAL TORQUE SPECIFICATIONS SEE DWG NO. 128783-01-000

FOR ELECTRICAL CALLOUTS SEE DWG NO. 121339-01-000

99	L35U	(1B1)	(12D)	(IE3)
WIRING INSTL-BODY (110R30US)				
130513				

- NOTES:
1. ALL WIRE TO BE CLAMPED WITH CLAMP 10495-01-000 OR CLIP 80734-01-000 EVERY 600. USE SCREW 667-10-12B UNLESS OTHERWISE SPECIFIED.
 2. ALL WIRES ARE TO BE CLAMPED WITH CLAMP 10497-05-000 WITHIN 200 OF OUTLET BOXES AND SPLICES. USE SCREW 667-10-12B.
- (3) WIRE IN ROOF.
 - (4) WIRE ROUTED THRU SIDEWALL.
 - (5) WIRE ROUTED BELOW FLOOR.
 - (6) WIRE IN SIDEWALL.
 - (7) LOCATE TOP OF REFRIGERATOR RECEPTACLE 300 ABOVE SHELF.
 - (8) SEE ENTERTAINMENT CENTER COMPL FOR ADDITIONAL INFORMATION



INSTALL LABEL ON FRONT PANEL BELOW BREAKERS BETWEEN MOUNTING HOLES

- ③ WIRE TO BE STRIPPED 10 AND SOLDER DIPPED.
- ② WIRE MUST BE 600 LONG INSIDE BOX, ALL OTHER TO BE 300 LONG.
- 1. ALL GROUND WIRES TO BE COVERED WITH TUBING 8041-02-000.

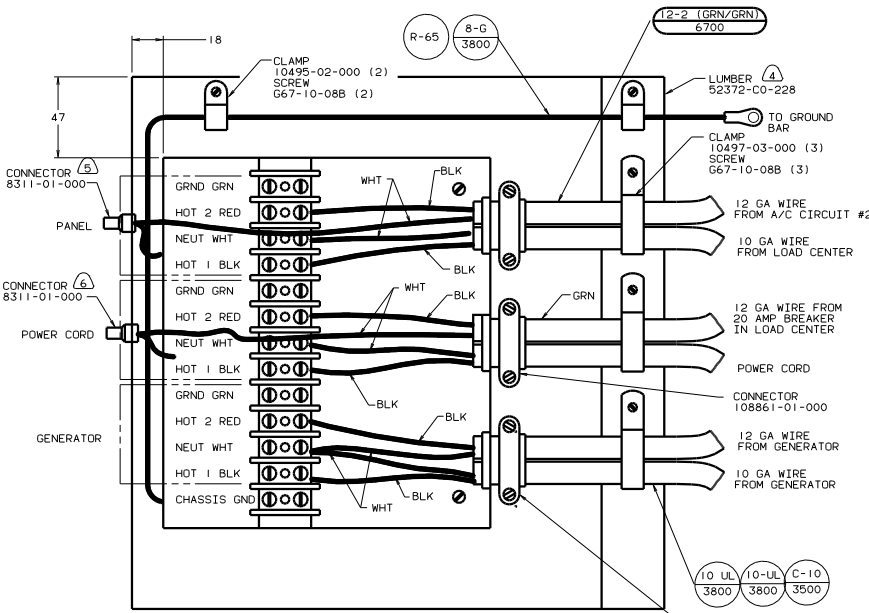
NOTES:

FOR ELECTRICAL TORQUE SPECIFICATIONS SEE DWG NO. 128783-01-000

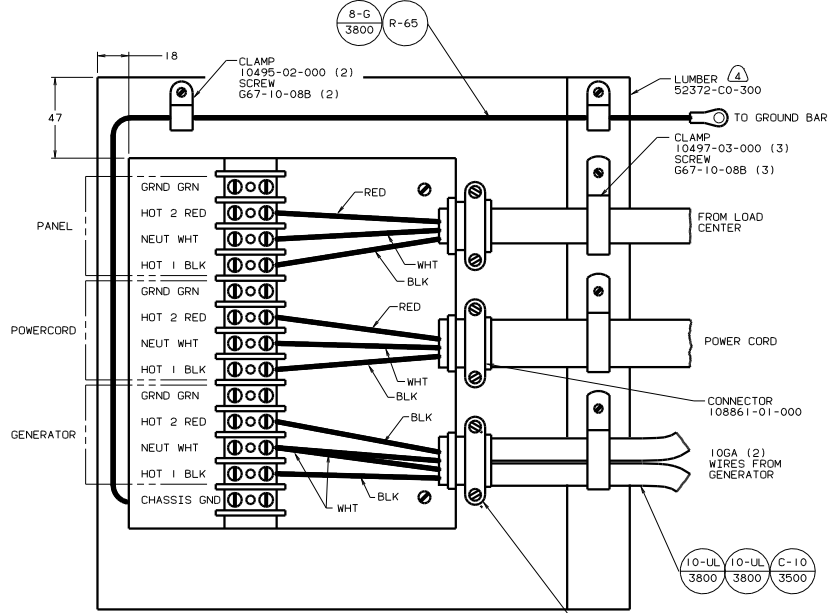
FOR ELECTRICAL CALLOUTS SEE DWG NO. 121339-01-000

①E3 ENERGY MANAGEMNT SYSTEM
①B1 CODES STANDARDS/USA
①20 ELECTRICAL SYSTEM 30 AMP
99 L35U ①20 ①B1 ①E3

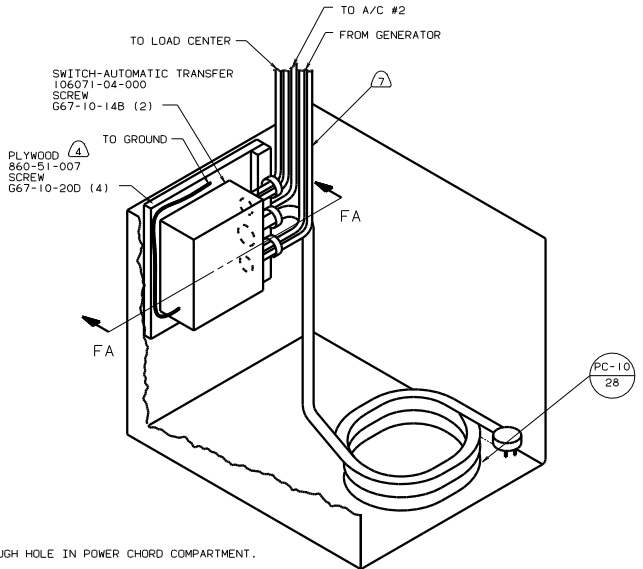
WIRING INSTL-BODY(30 LC US)
SHEET 5 of 24



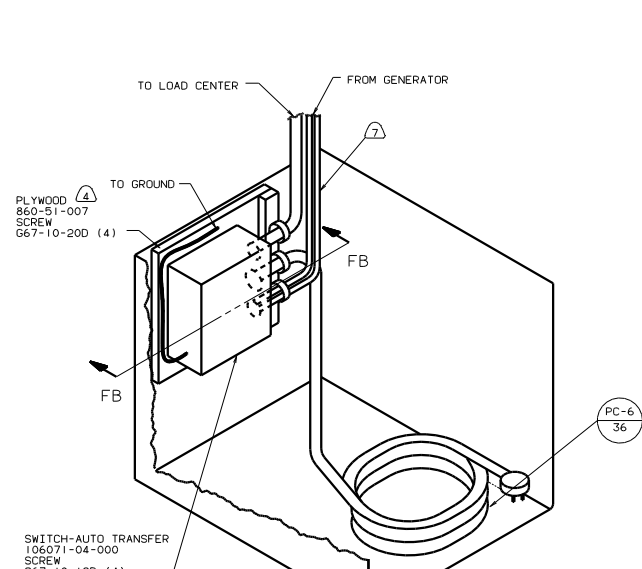
VIEW FA-FA



VIEW FB-FB



120



78.5 ELECTRICAL SYSTEM - 50 AMP

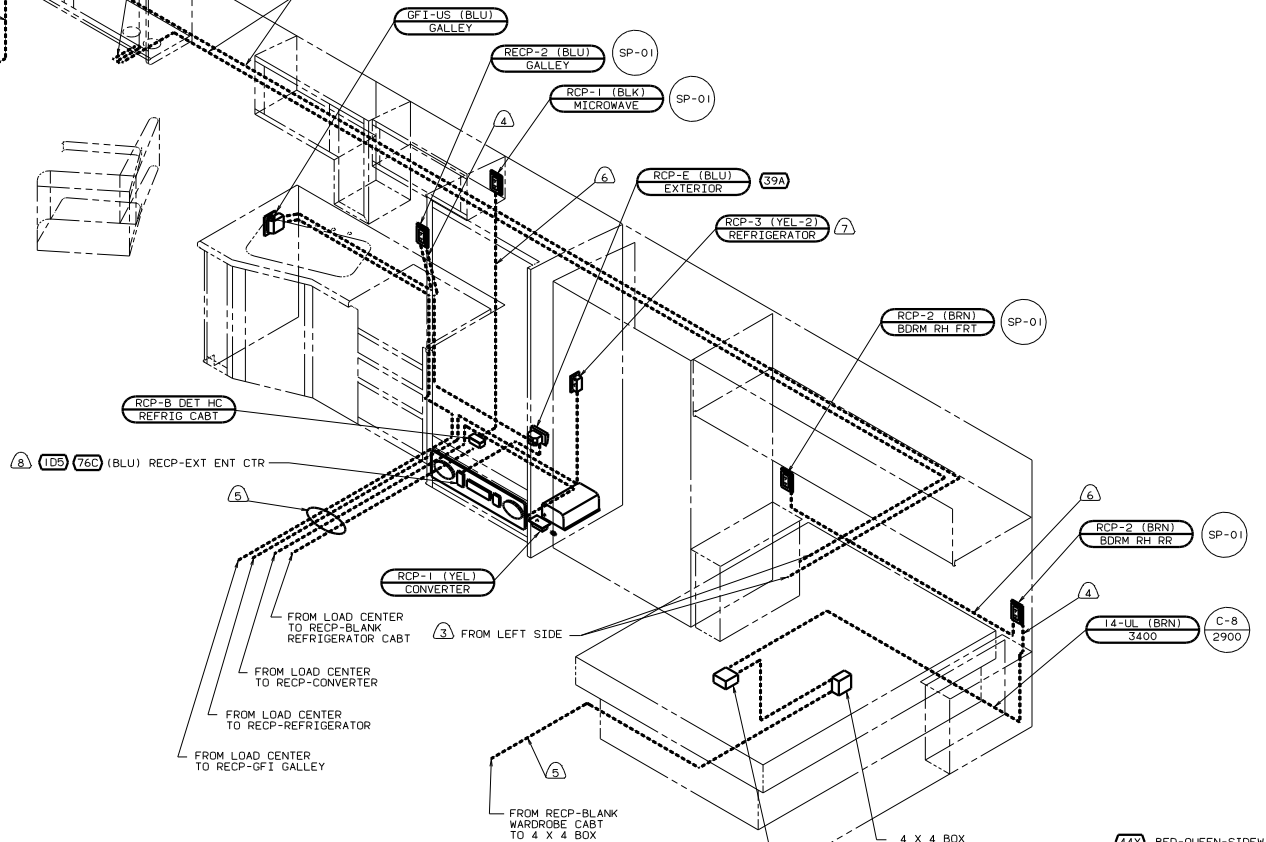
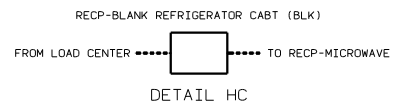
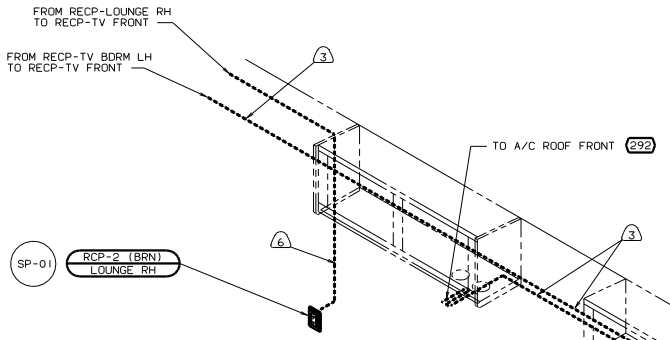
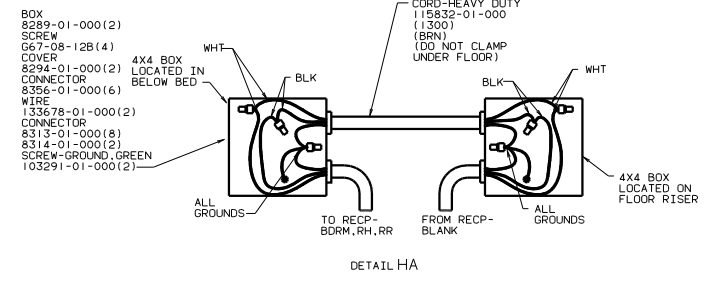
- 7 WIRES TO PASS THROUGH HOLE IN POWER CHORD COMPARTMENT.
- 6 FOR THIS CONNECTION REMOVE NEUTRAL WIRE MARKED BLUE FROM CONNECTIONS MARKED POWER CORD.
- 5 FOR THIS CONNECTION REMOVE NEUTRAL WIRE MARKED BLUE FROM CONNECTIONS MARKED PANEL.
- 4 PAINT EXPOSED SURFACE BLACK WITH 106112-01-000
- 3. ALL 110V STRANDED WIRE W/O TERMINALS TO BE STRIPPED 10MM AND SOLDER DIPPED.
- 2. GROUND WIRES NOT SHOWN FOR CLARITY.
- 1. ALL WIRES TO BE CLAMPED WITH IN 200 OF BOX.

120 ELECTRICAL SYSTEM 30 AMP

FOR ELECTRICAL TORQUE SPECIFICATIONS SEE DWG NO. 128783-01-000	X-X	FOR ELECTRICAL CALLOUTS SEE DWG NO. 121339-01-000
----------------------------------------------------------------	-----	---------------------------------------------------

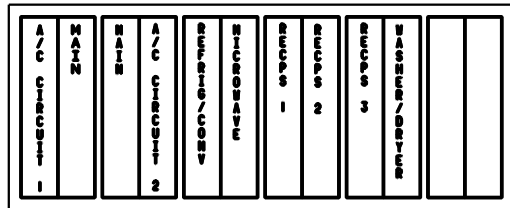
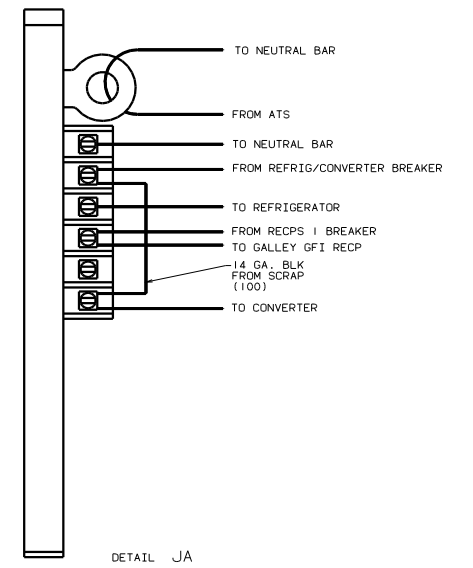
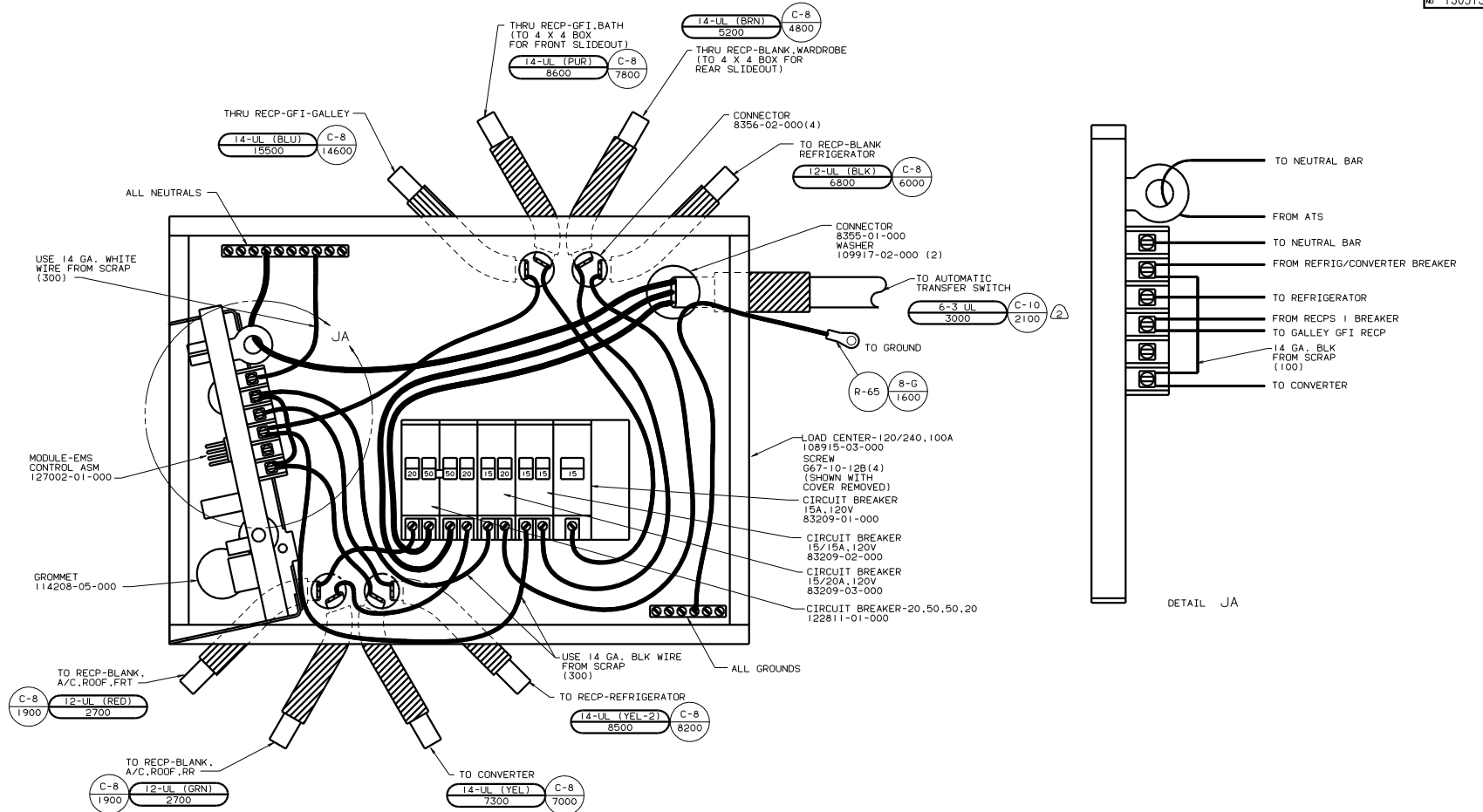
- 78. ELECTRICAL SYSTEM-50 AMP
- 265 CODES/STANDARDS-CSA/CMVSS
- 120 ELECTRICAL SYSTEM 30 AMP
- 181 CODES/STANDARDS USA

99 L35U (181) (120) (78.5)



- 8 SEE ENTERTAINMENT CENTER COMPL FOR ADDITIONAL INFORMATION.
 - 7 LOCATE TOP OF REFRIGERATOR RECEPTACLE 300 ABOVE SHELF.
 - 6 WIRE IN SIDEWALL.
 - 5 WIRE ROUTED BELOW FLOOR.
 - 4 WIRE ROUTED THRU SIDEWALL.
 - 3 WIRE IN ROOF.
2. ALL WIRES ARE TO BE CLAMPED WITH CLAMP 10497-05-000 WITHIN 200 OF OUTLET BOXES AND SPLICES. USE SCREW 667-10-12B.
1. ALL WIRE TO BE CLAMPED WITH CLAMP 10495-01-000 OR CLIP 80734-01-000 EVERY 600. USE SCREW 667-10-12B UNLESS OTHERWISE SPECIFIED.

FOR ELECTRICAL TORQUE SPECIFICATIONS SEE DWG NO. 128783-01-000	(X-X)	FOR ELECTRICAL CALLOUTS SEE DWG NO. 121339-01-000	99 L35U (1B1) (78J) (IE3)
TITLE: WIRING INSTL-BODY (110R50US)			130513
SHEET 8 OF 24			1.6



LABEL 95721-29-000

INSTALL LABEL ON FRONT PANEL BELOW BREAKERS BETWEEN MOUNTING HOLES

2 WIRE MUST BE 600 LONG INSIDE BOX, ALL OTHERS TO BE 300 LONG.

1. ALL GROUND WIRES TO BE COVERED WITH TUBING 8041-02-000.

NOTES:

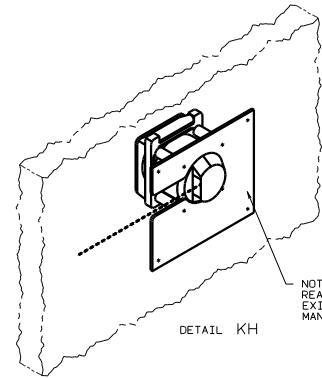
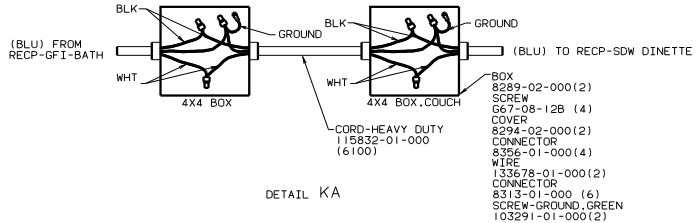
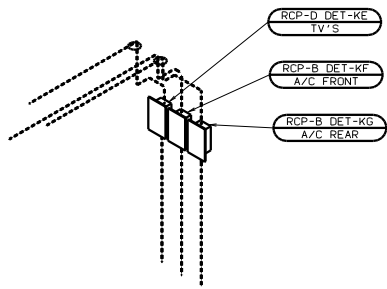
- (78J) ELECTRICAL SYSTEM - 50 AMP
 - (1E3) ENERGY MANAGMENT SYSTEM
 - (1B1) CODES STANDARDS/USA
- 99 L35U (1B1) (1E3) (78J)

FOR ELECTRICAL TORQUE SPECIFICATIONS SEE DWG NO. 128783-01-000

(X-X) FOR ELECTRICAL CALLOUTS SEE DWG NO. 121339-01-000

WIRING INSTL-BODY (50 LC US)

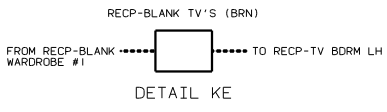
130513



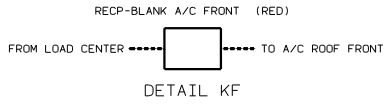
DETAIL KB

DETAIL KA

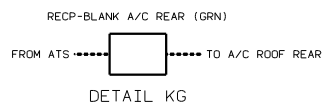
DETAIL KH



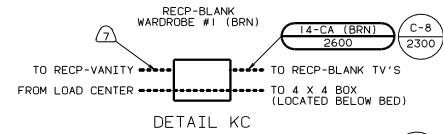
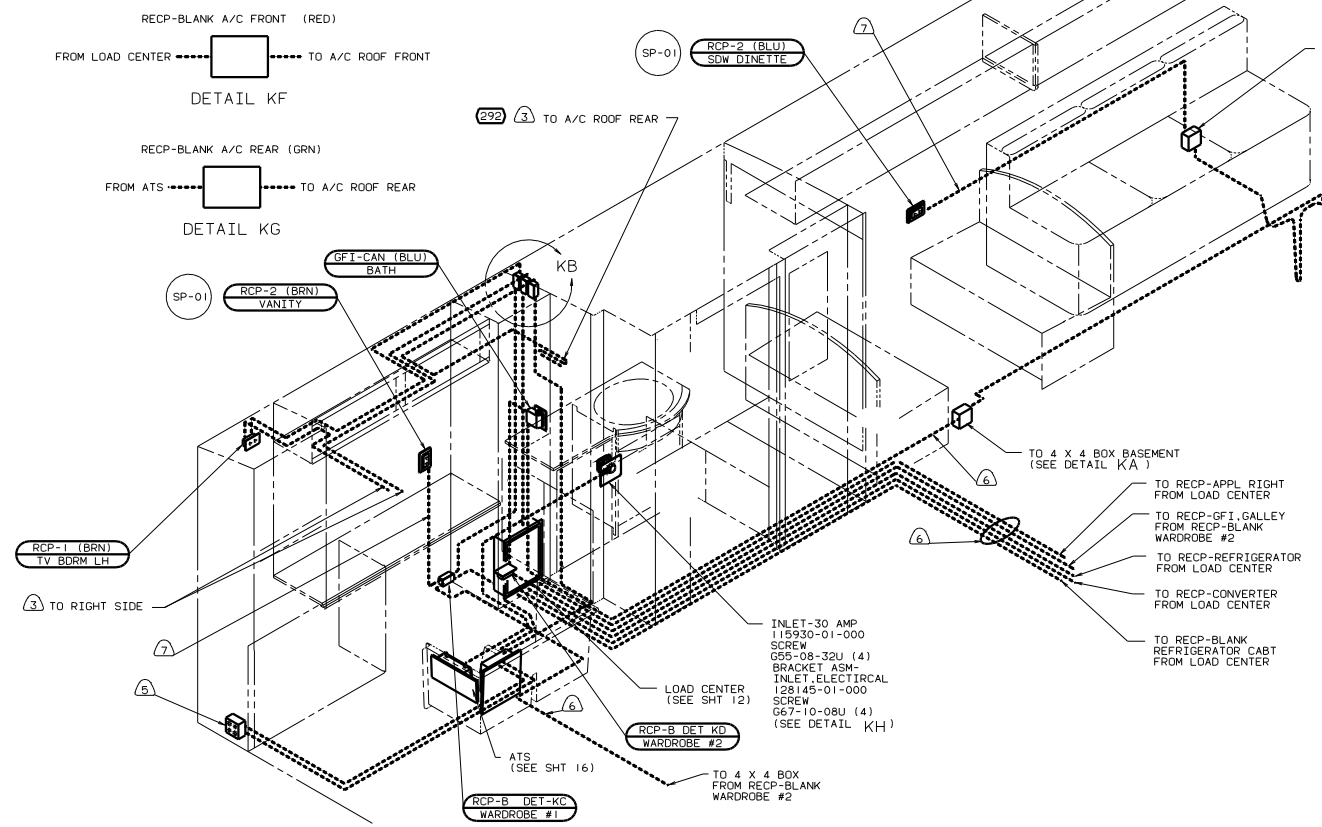
DETAIL KE



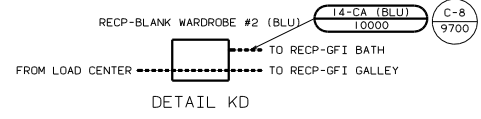
DETAIL KF



DETAIL KG



DETAIL KC



DETAIL KD

- ⑦ WIRE ROUTED IN SIDEWALL.
- ⑥ WIRE ROUTED BELOW FLOOR.
- ⑤ SEE GENERATOR INSTL FOR ADDITIONAL INFORMATION.
- ④ ROUTE WIRE IN SIDEWALL DURING INSTALLATION.
- ③ WIRE ROUTED IN ROOF.

2. ALL WIRES ARE TO BE CLAMPED WITH CLAMP 10497-05-000 WITHIN 200 OF OUTLET BOXES AND SPLICES. USE SCREW G67-10-12B.

1. ALL WIRE TO BE CLAMPED WITH CLAMP 10495-01-000 OR CLIP 80734-01-000 EVERY 700. USE SCREW G67-10-12B UNLESS OTHERWISE SPECIFIED.

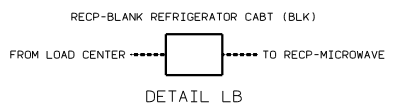
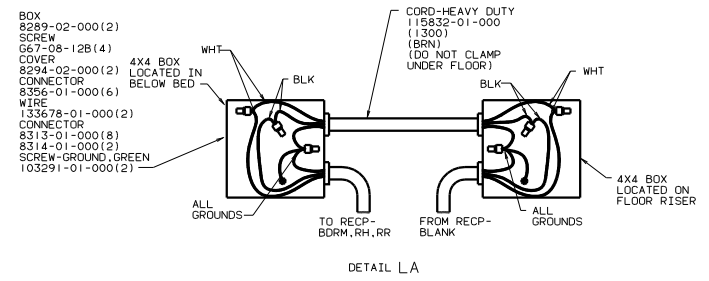
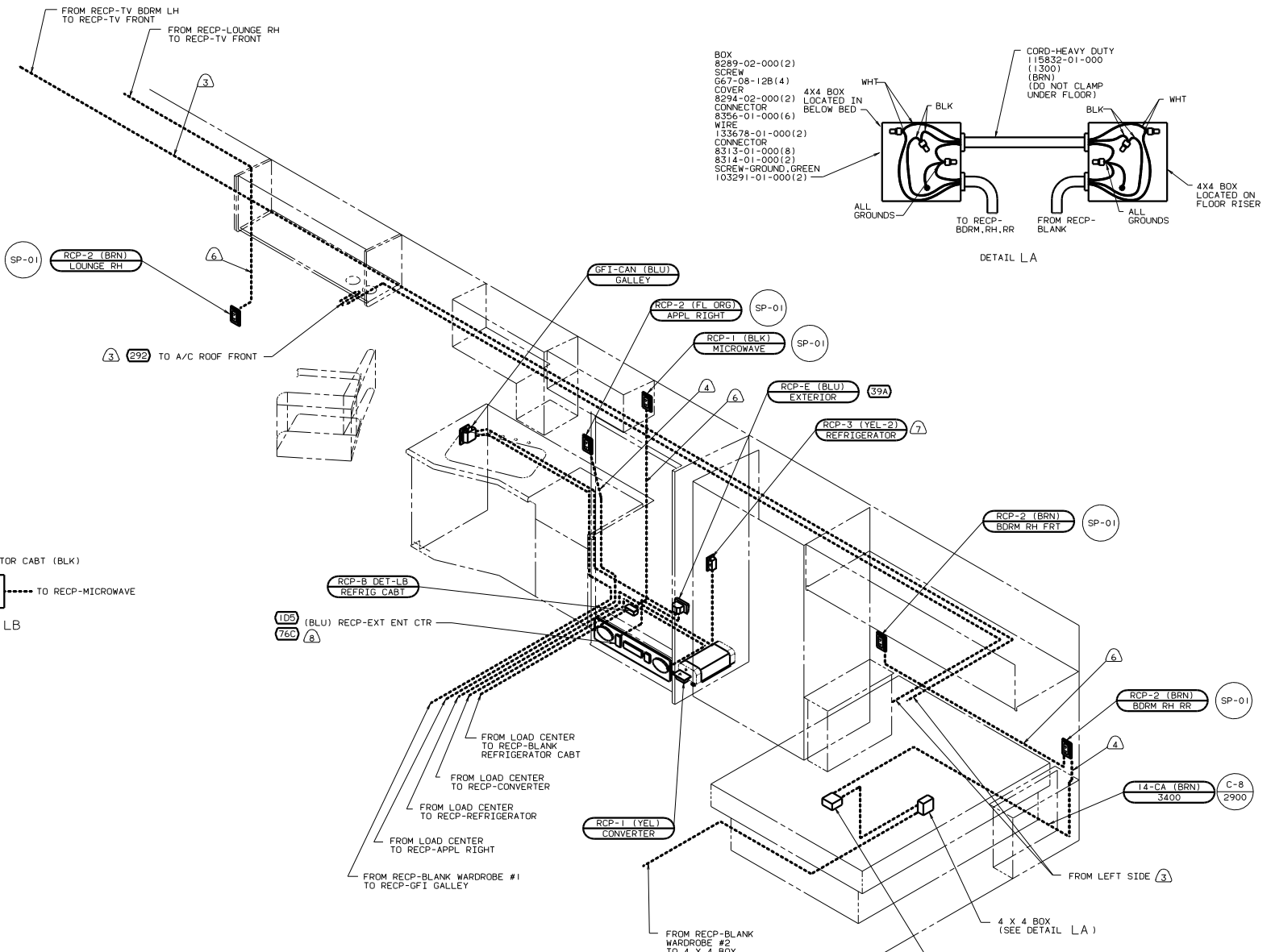
44X BED-QUEEN-SIDEWALL

- 44X BED-QUEEN-SIDEWALL
- 292 A/C ROOF-HIGH EFFICIENCY
- 265 CODES/STANDARDS-CSA/CMVSS
- 1E3 ENERGY MGMT SYSTEM
- 12B ELECTRICAL SYSTEM 30 AMP

FOR ELECTRICAL TORQUE SPECIFICATIONS SEE DWG NO. 128783-01-000

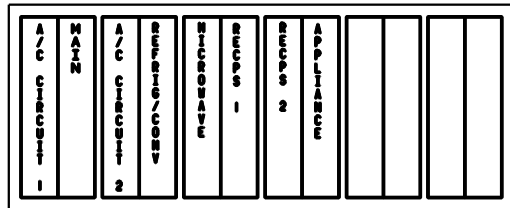
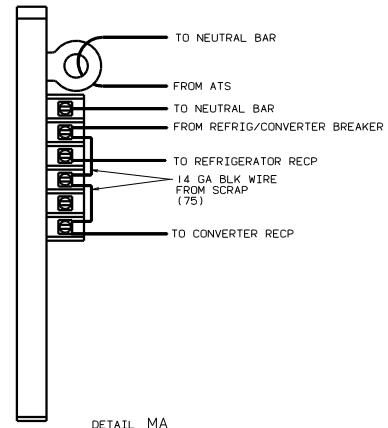
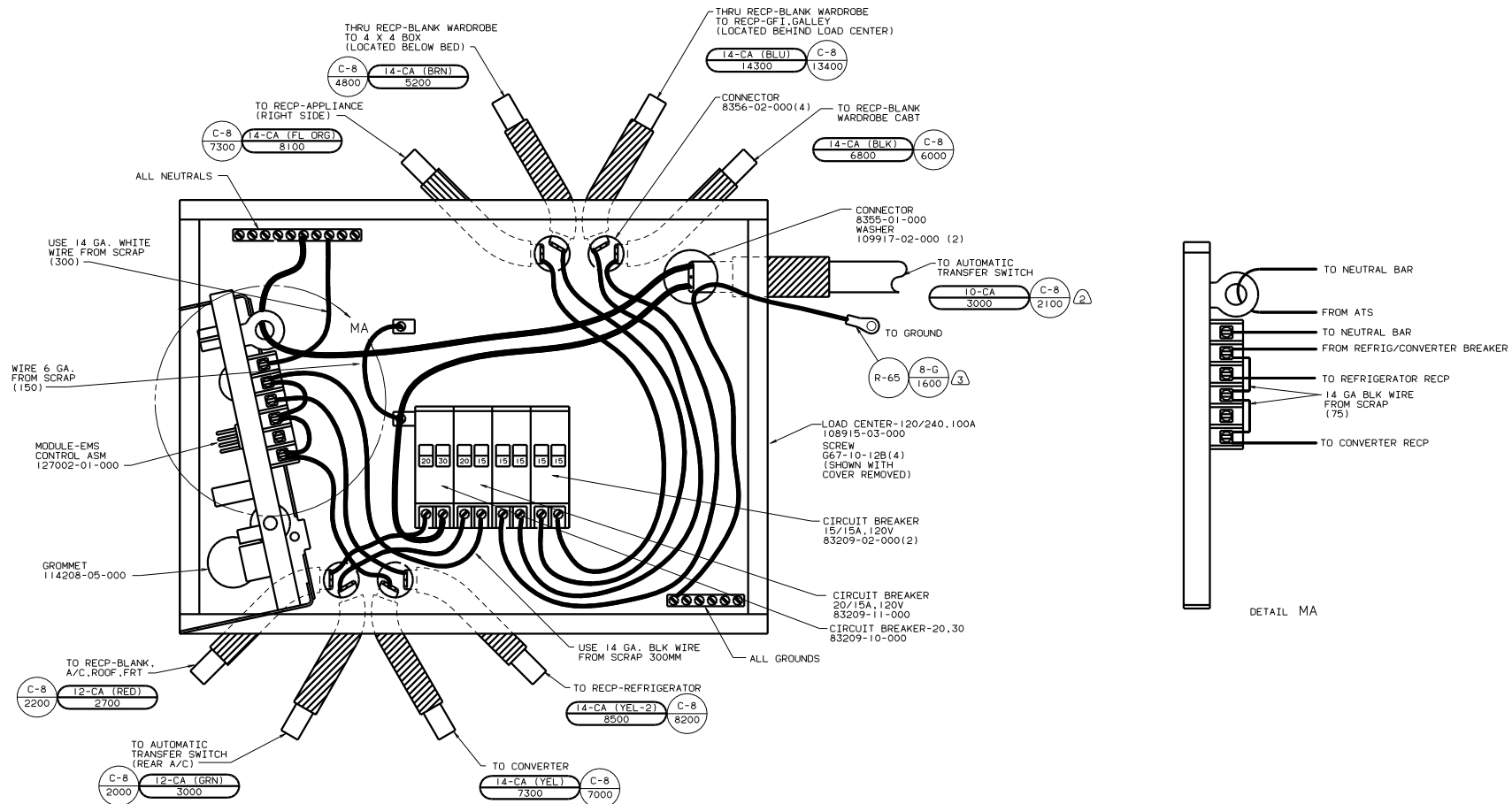
FOR ELECTRICAL CALLOUTS SEE DWG NO. 121339-01-000

99 L35U 265 12B 1E3
 WIRING INSTL-BODY(110130CAN)
 130513



- ⑧ SEE ENTERTAINMENT CENTER COMPL FOR ADDITIONAL INFORMATION.
 - ⑦ LOCATE TOP OF REFRIGERATOR RECEPTACLE 300 ABOVE SHELF.
 - ⑥ WIRE IN SIDEWALL.
 - ⑤ WIRE ROUTED BELOW FLOOR.
 - ④ WIRE ROUTED THRU SIDEWALL.
 - ③ WIRE IN ROOF.
2. ALL WIRES ARE TO BE CLAMPED WITH CLAMP 10497-05-000 WITHIN 200 OF OUTLET BOXES AND SPLICES. USE SCREW G67-10-12B.
1. ALL WIRE TO BE CLAMPED WITH CLAMP 10495-01-000 OR CLIP 80734-02-000 EVERY 600. USE SCREW G67-10-12B UNLESS OTHERWISE SPECIFIED.

FOR ELECTRICAL TORQUE SPECIFICATIONS SEE DWG NO. 128783-01-000	X-X	FOR ELECTRICAL CALLOUTS SEE DWG NO. 121339-01-000	39A EXT RECEPTACLE DPLX 120VAC
			44X BED-QUEEN-SIDEWALL
			76C ENTERTAINMENT CTR/EXT CSETTE
			265 CODES/STANDARDS-CSA/CMVSS
			1E3 ENERGY MANAGEMENT SYSTEM
			1D5 ENTERTAINMENT CTR-EXT-W/CD
			12D ELECTRICAL SYSTEM 30 AMP
99 L35U (265) (12D) (1E3)			
WIRING INSTL-BODY(110R30CAN)			
SHEET 11 OF 24			130513



- ③ WIRE TO BE STRIPPED 10 AND SOLDER DIPPED.
- ② WIRE MUST BE 600 LONG INSIDE BOX, ALL OTHER TO BE 300 LONG.
- 1. ALL GROUND WIRES TO BE COVERED WITH TUBING 8041-02-000.

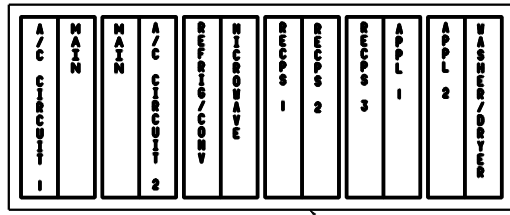
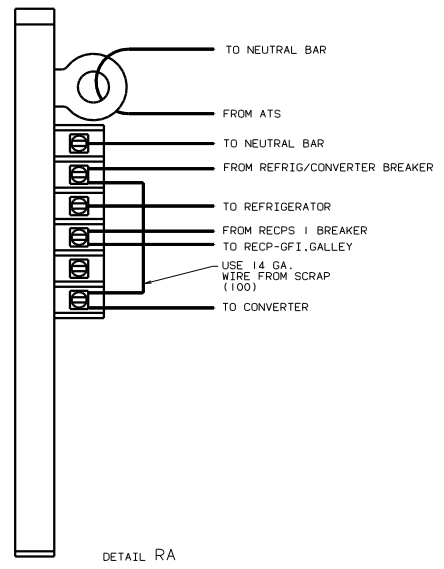
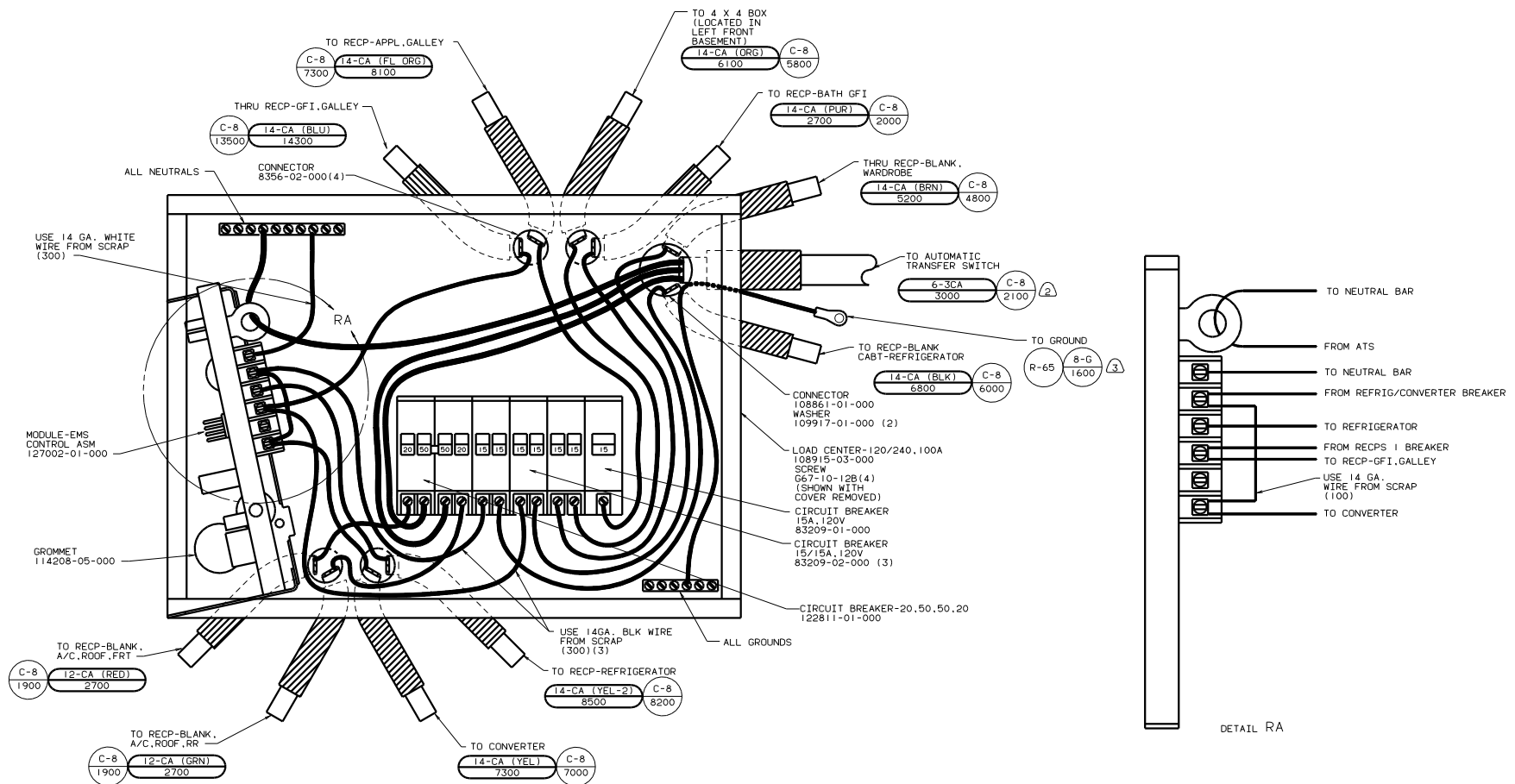
(X-X) FOR ELECTRICAL CALLOUTS SEE DWG NO. 121339-01-000

②65 CODES/STANDARDS-CSA/CMVSS
 ①E3 ENERGY MANAGMNT SYSTEM
 ①20 ELECTRICAL SYSTEM 30 AMP

99 L35U ②65 ①E3 ①20

WIRING INSTL-BODY(30 LC CAN)

130513



LABEL 95721-30-000

INSTALL LABEL ON FRONT PANEL BELOW BREAKERS BETWEEN MOUNTING HOLES

- 3 WIRE TO BE STRIPPED 10 AND SOLDER DIPPED.
- 2 WIRE MUST BE 600 LONG INSIDE BOX, ALL OTHERS TO BE 300 LONG.
1. ALL GROUND WIRES TO BE COVERED WITH TUBING 8041-02-000.

NOTES:

78J ELECTRICAL SYSTEM - 50 AMP

265 CODES/STANDARDS-CSA/CMVSS

1E3 ENERGY MANAGMENT SYSTEM

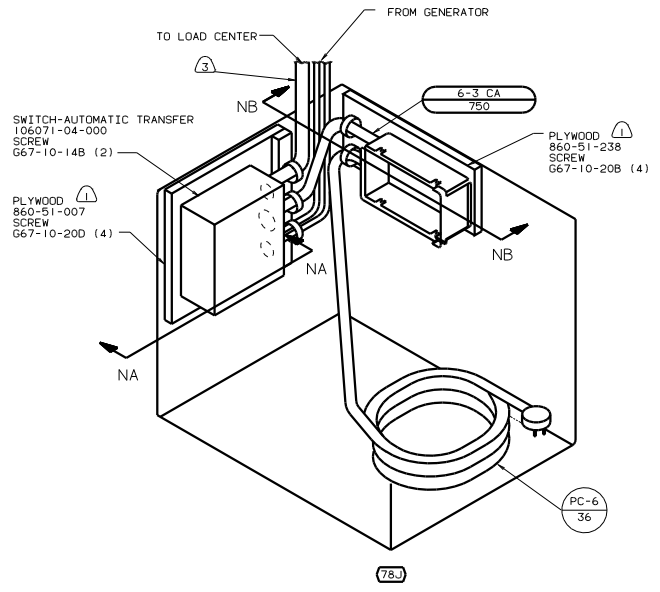
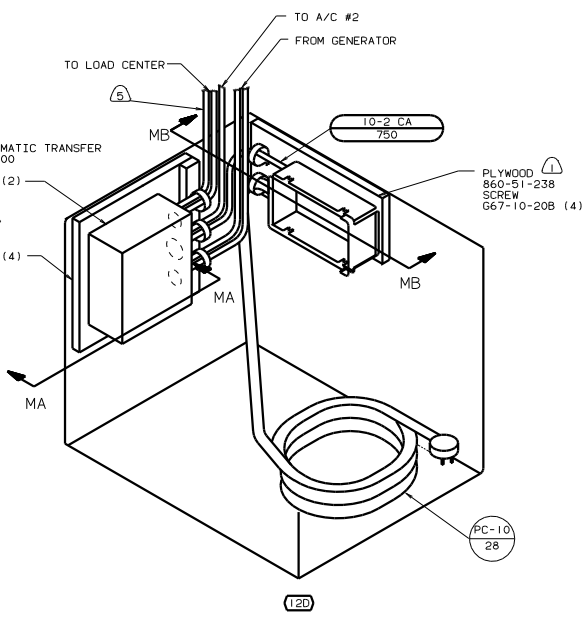
99 L35U 265 78J 1E3

FOR ELECTRICAL SPECIFICATIONS SEE DWG NO. 128783-01-000

FOR ELECTRICAL CALLOUTS SEE DWG NO. 121339-01-000

WIRING INSTL-BODY(50 LC CAN)

130513



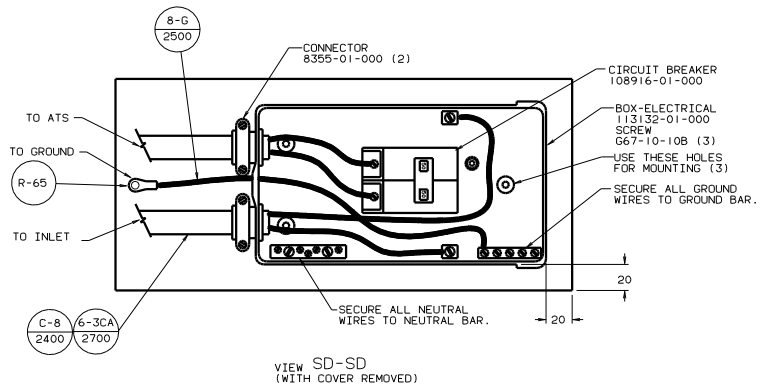
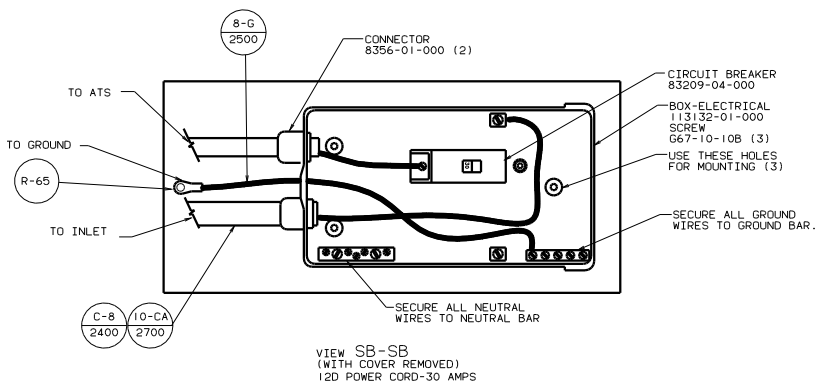
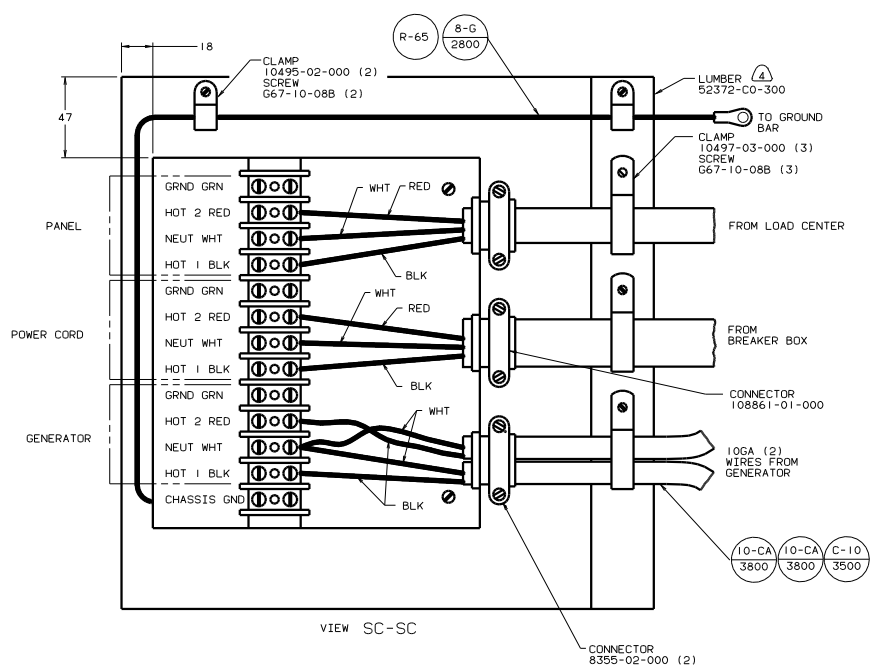
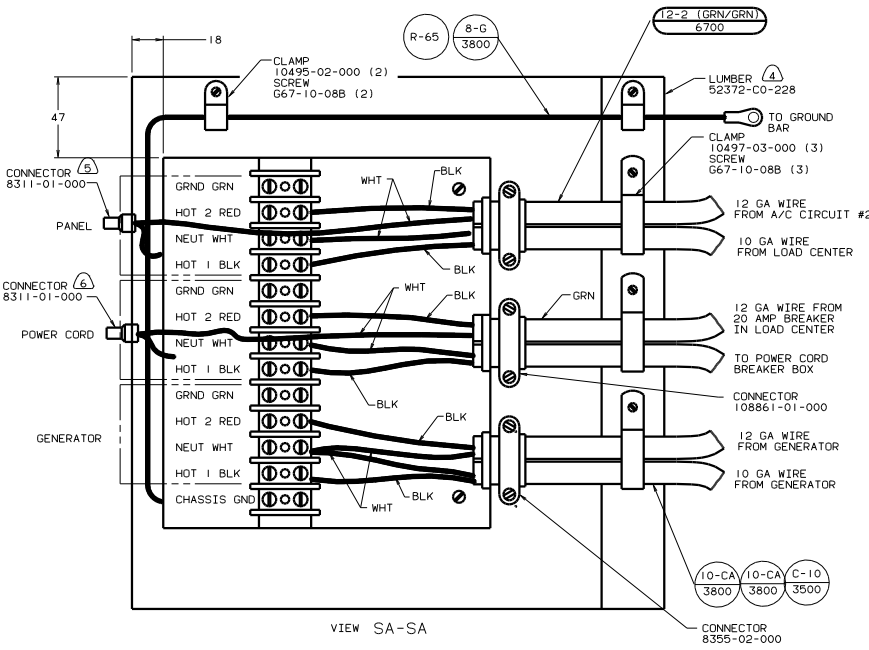
- ⑤ WIRES TO PASS THROUGH HOLE IN POWER CORD COMPARTMENT.
- ④ FOR CONNECTION OF GROUND WIRES.
- ③ FOR THIS CONNECTION REMOVE NEUTRAL WIRE MARKED BLUE FROM CONNECTIONS MARKED POWER CORD.
- ② FOR THIS CONNECTION REMOVE NEUTRAL WIRE MARKED BLUE FROM CONNECTIONS MARKED PANEL.
- ① PAINT EXPOSED SURFACES BLACK WITH 106112-01-000

NOTES:

- 120 ELECTRICAL SYSTEM 30 AMP
- 78J ELECTRICAL SYSTEM-50 AMP
- 265 CODES/STANDARDS-CSA/CMVSS

FOR ELECTRICAL CALLOUTS SEE DWG NO. 121339-01-000

99 L35U 265 78J 120
 WIRING INSTL-BODY(AIS/CAN)
 SHEET 16 OF 24 130513

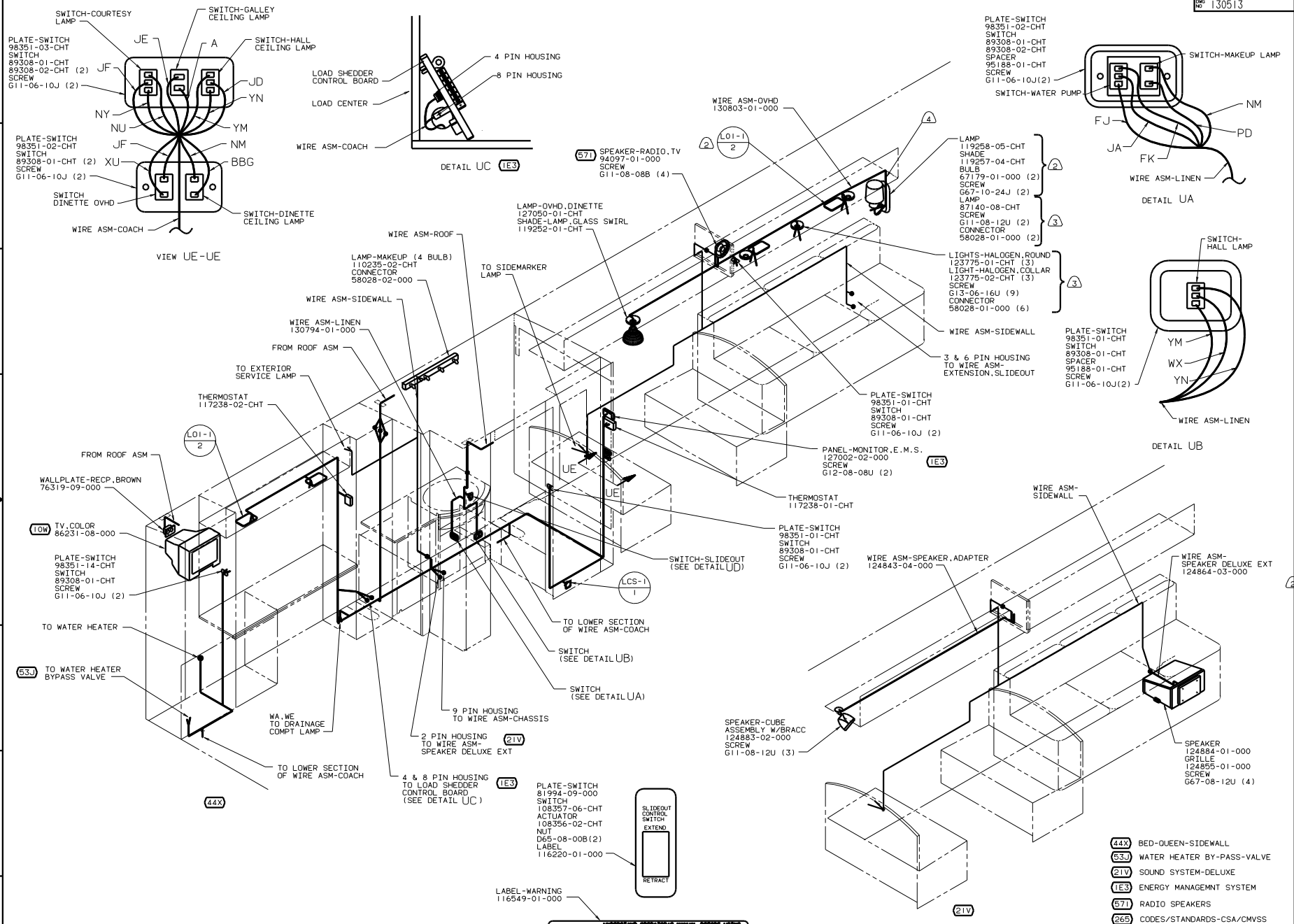


- 6. FOR THIS CONNECTION REMOVE NEUTRAL WIRE MARKED BLUE FROM CONNECTIONS MARKED POWER CORD.
- 5. FOR THIS CONNECTION REMOVE NEUTRAL WIRE MARKED BLUE FROM CONNECTIONS MARKED PANEL.
- 4. PAINT EXPOSED SURFACE BLACK WITH 106112-01-000
- 3. ALL 110V STRANDED WIRE W/O TERMINALS TO BE STRIPPED 10MM AND SOLDER DIPPED.
- 2. GROUND WIRES NOT SHOWN FOR CLARITY.
- 1. ALL WIRES TO BE CLAMPED WITH IN 200 OF BOX.

12D ELECTRICAL SYSTEM 30 AMP

78U ELECTRICAL SYSTEM - 50 AMP

401 GEN-5.0KW-ONAN-GAS-EMERALD
 39M GEN-7.0KW ONAN-GAS-MARQUIS
 265 CODES/STANDARDS-CSA/CMVSS
 99 L35U 265



- NOTES:
- ④ ROUTED IN WALL DURING INSTALLATION.
 - ③ WITH ITASCAS UNITS.
 - ② WITH WINNEBAGO UNITS.
 - ① WIRE ROUTED IN SIDEWALL.

WARNING! ELECTRICAL SYSTEMS ARE HIGHLY SENSITIVE TO MOISTURE. ALWAYS USE PROPER WIRING TECHNIQUES TO PREVENT CORROSION AND SHORTS.

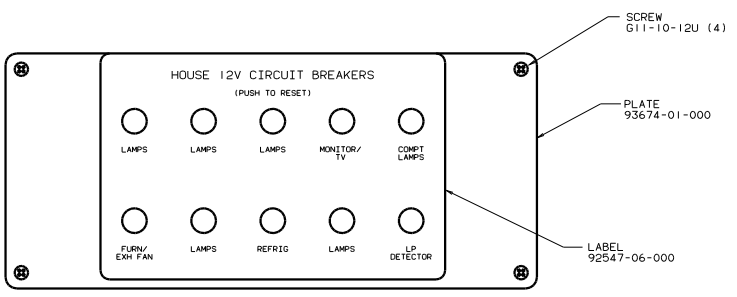
DETAIL UD

FOR ELECTRICAL TORQUE SPECIFICATIONS SEE DWG NO. 128783-01-000

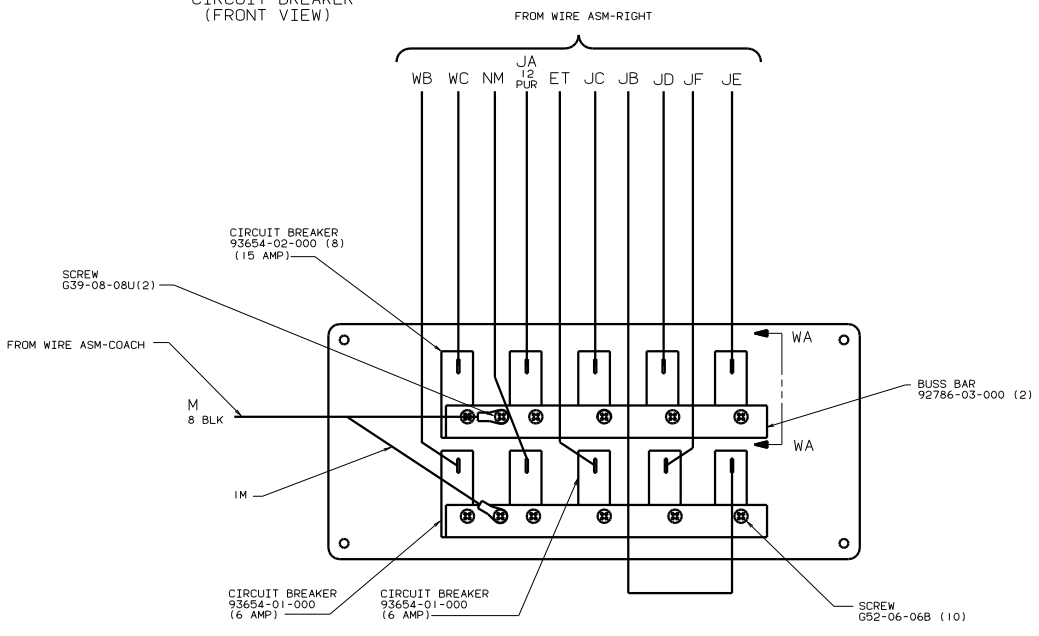
FOR ELECTRICAL CALL OUTS SEE DWG NO. 121339-01-000

④④	BED-QUEEN-SIDEWALL
⑤③	WATER HEATER BY-PASS-VALVE
②1V	SOUND SYSTEM-DELUXE
1E3	ENERGY MANAGMENT SYSTEM
⑤71	RADIO SPEAKERS
②65	CODES/STANDARDS-CSA/CMVSS
①B1	CODES STANDARDS/USA
10W	TV-REAR
99 L35U	①B1 ②65

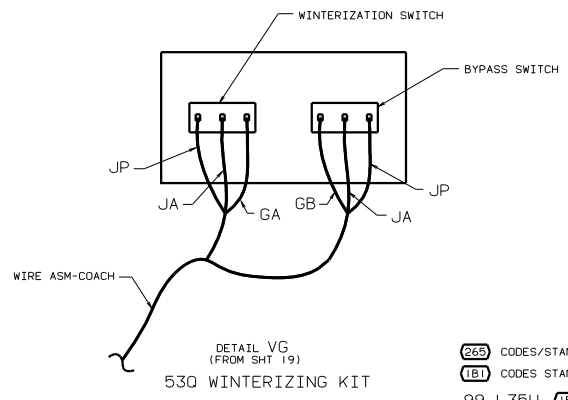
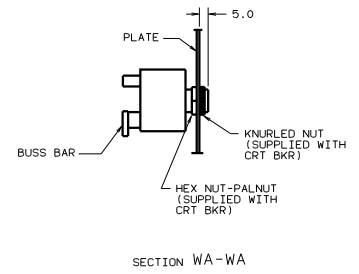
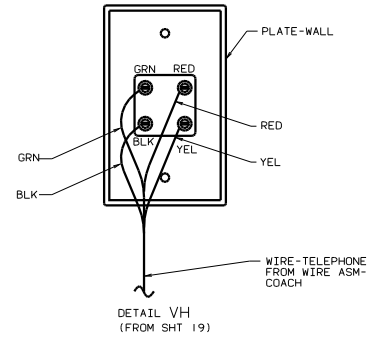
TITLE: WIRING INSTL-BODY(12V L)
 130513



CIRCUIT BREAKER (FRONT VIEW)

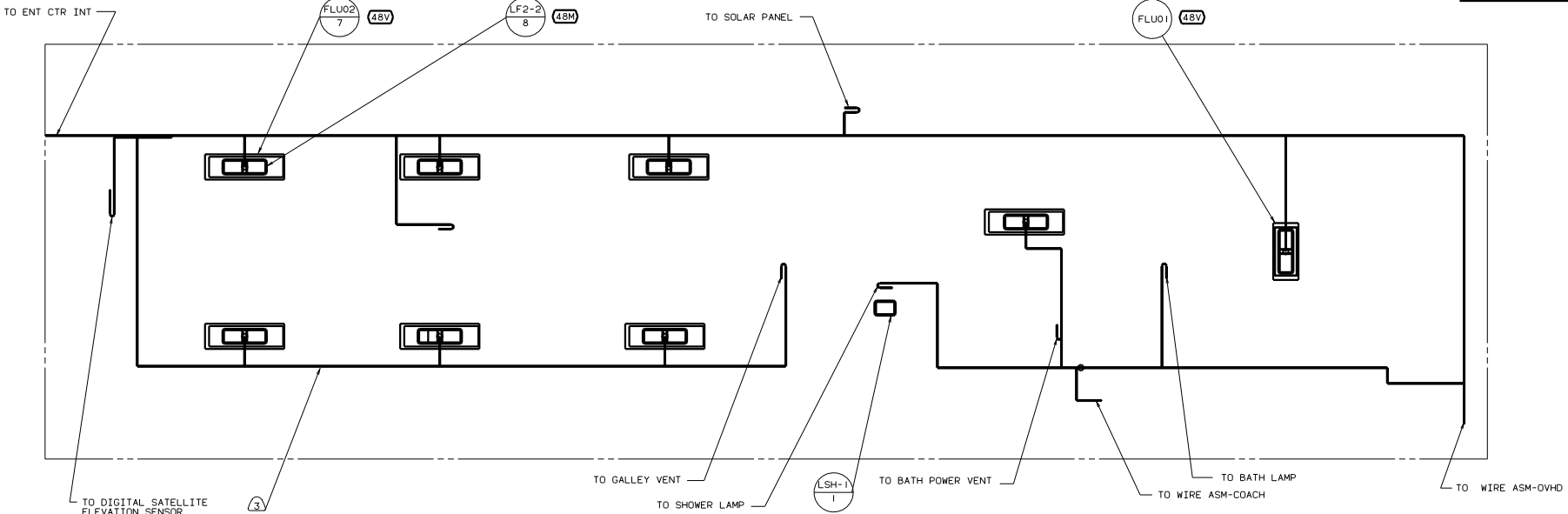


CIRCUIT BREAKER (BACK VIEW)

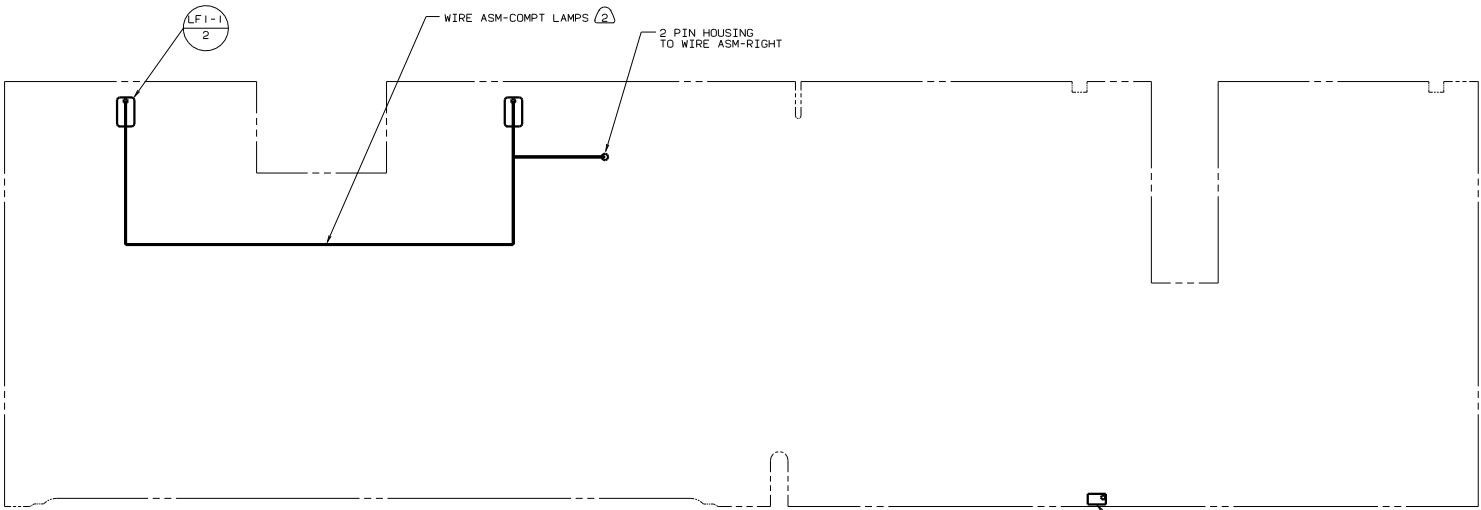


(265) CODES/STANDARDS-CSA/CMVSS
 (1B1) CODES STANDARDS/USA
 99 L35U (1B1) (265)

TITLE		WIRING INSTL-BODY(12 BP)	
30 NO SCALE	DATE	REV	FIG NO
SHEET 20 of 24		1E	130513



CEILING LAMPS



COMPARTMENT LAMPS

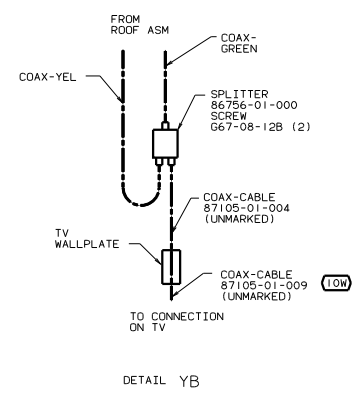
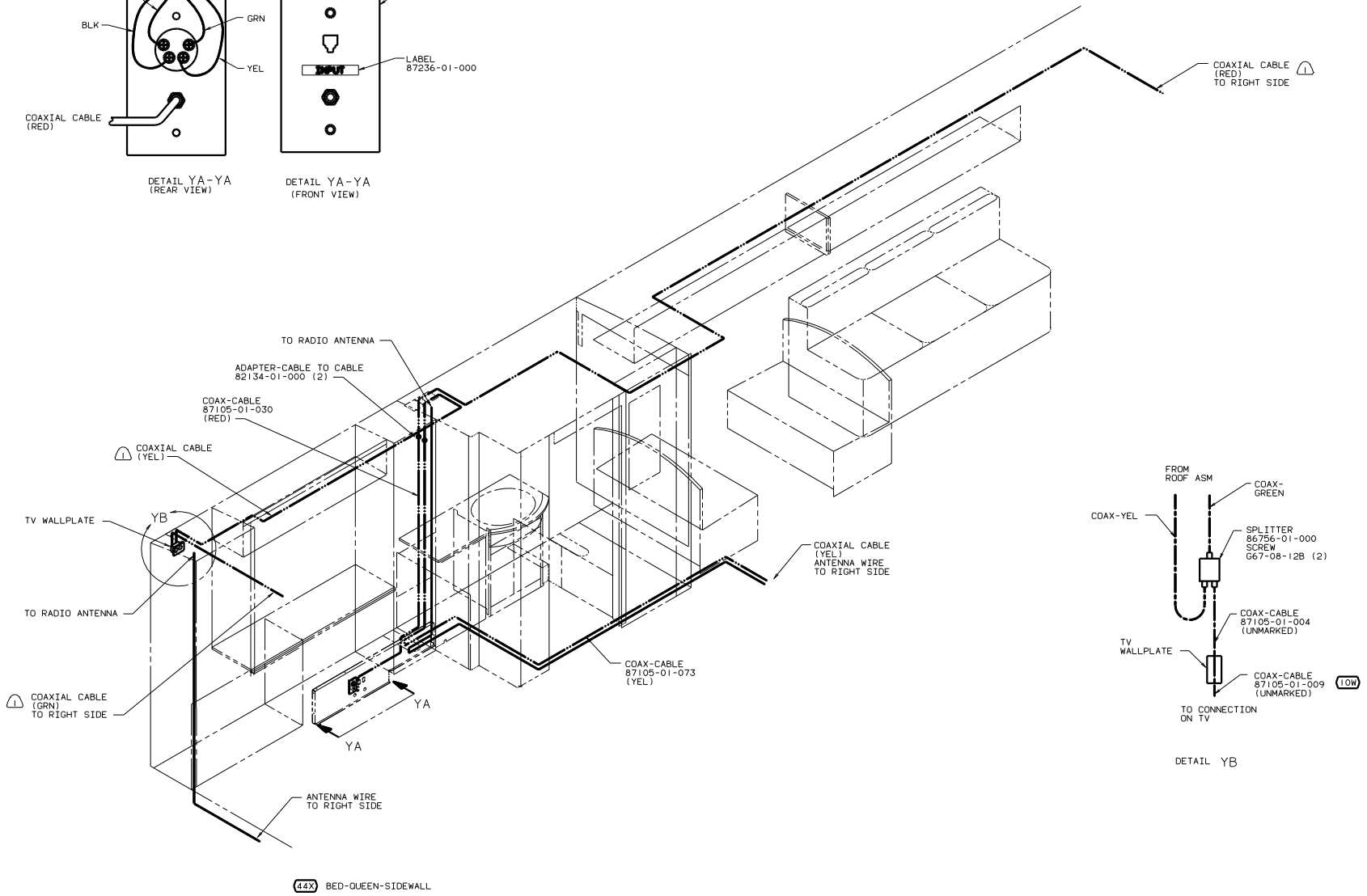
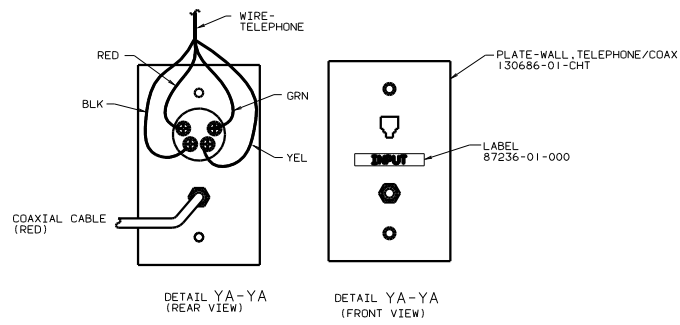
- NOTES:
- ③ WIRE IN ROOF.
 - ② WIRE ASM ROUTED IN FLOOR.
 - 1. LAMPS TO BE MOUNTED WITH SWITCH OUTBOARD AND 75 ±20 FROM EDGE OF FLOOR.

LAMP
86280-01-000
SCREW
667-10-12U (4)
CONNECTOR
58028-01-000

- (48V) LIGHTS-FLUORESCENT
- (48M) LIGHTS-INCANDESCENT
- (265) CODES/STANDARDS-CSA/CMVSS
- (1B1) CODES STANDARDS/USA
- 99 L35U (1B1) (265)

(X-X)	FOR ELECTRICAL CALLOUTS SEE DWG NO. 121339-01-000
	DATE BY CHKD APP'D

TITLE WIRING INSTL-BODY(12 CL)	
SHEET 21 of 24	FIG NO 130513

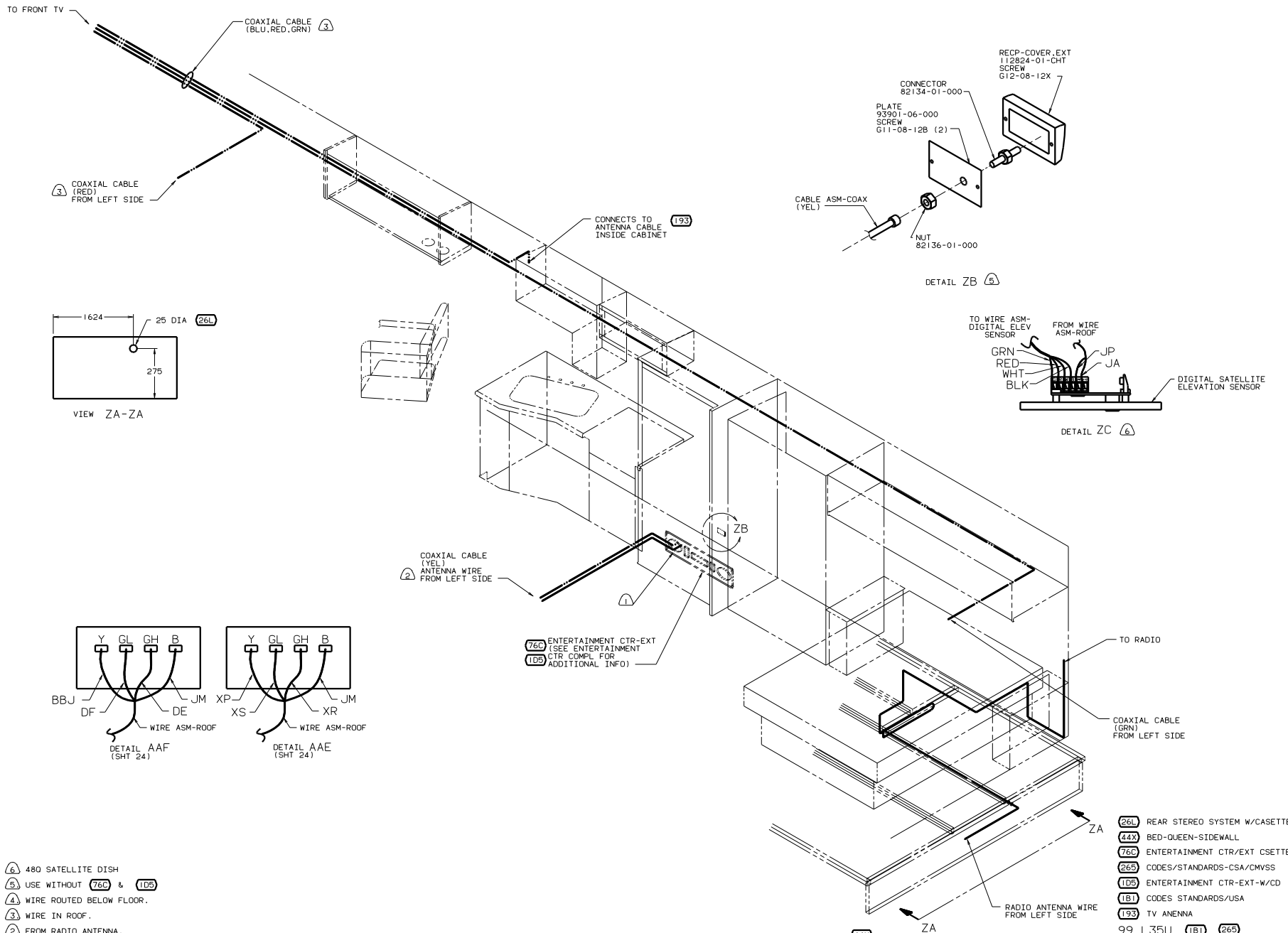


WIRE IN ROOF.

NOTES:

- 10W TV-REAR
- 265 CODES/STANDARDS-CSA/CMVSS
- 181 CODES STANDARDS/USA
- 99 L35U 181 265

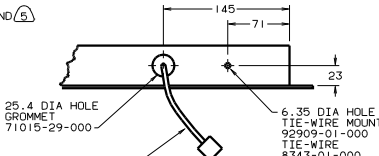
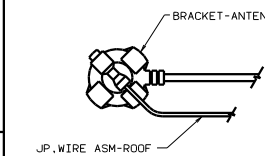
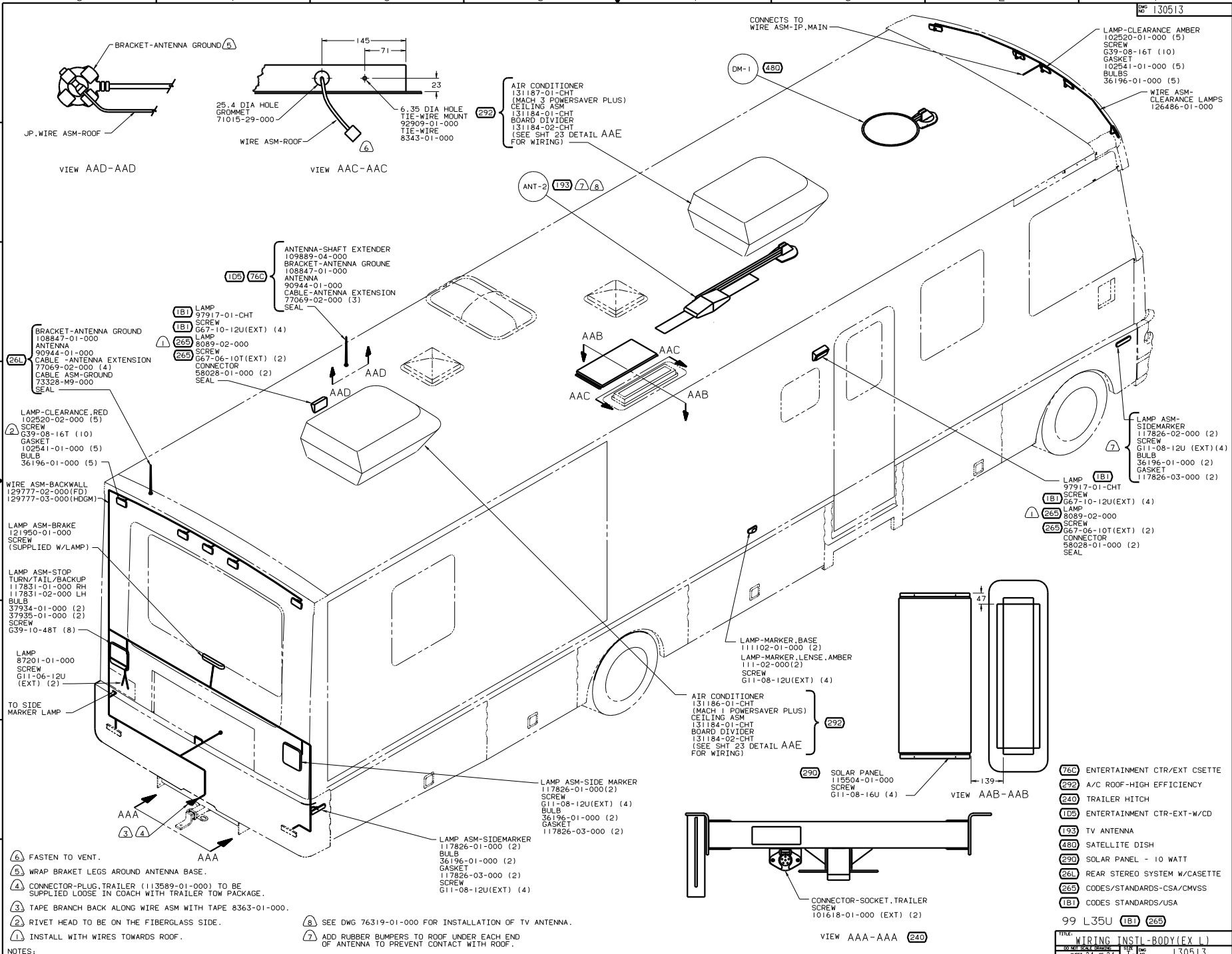
TITLE		WIRING INSTL-BODY(COAX L)	
NO	REV	DATE	BY
1	1		
SHEET 22 of 24		130513	



- (6) 480 SATELLITE DISH
- (5) USE WITHOUT (76C) & (105)
- (4) WIRE ROUTED BELOW FLOOR.
- (3) WIRE IN ROOF.
- (2) FROM RADIO ANTENNA.
- (1) TO ENTERTAINMENT CTR.

- (26L) REAR STEREO SYSTEM W/CASSETTE
- (44X) BED-QUEEN-SIDEWALL
- (76C) ENTERTAINMENT CTR/EXT CSETTE
- (265) CODES/STANDARDS-CSA/CMVSS
- (105) ENTERTAINMENT CTR-EXT-W/CD
- (181) CODES STANDARDS/USA
- (193) TV ANTENNA
- 99 L35U (181) (265)

TITLE		WIRING INSTL-BODY(COAX R)	
NO	REV	DATE	BY
1	1		
SHEET 23 of 24		130513	



AIR CONDITIONER (MACH 3 POWERSAVER PLUS)
131187-01-CHT
CEILING ASM
131184-01-CHT
BOARD DIVIDER
131184-02-CHT
(SEE SHT 23 DETAIL AAE FOR WIRING)

BRACKET-ANTENNA GROUND 108847-01-000
ANTENNA 90944-01-000
CABLE-ANTENNA EXTENSION 77069-02-000 (4)
CABLE ASM-GROUND 73328-M9-000 SEAL

LAMP 97917-01-CHT SCREW G67-10-12U(EXT) (4)
LAMP 8089-02-000 SCREW G67-06-10T(EXT) (2)
CONNECTOR 58028-01-000 (2) SEAL

LAMP-CLEARANCE, RED 102520-02-000 (5)
SCREW G39-08-16T (10)
GASKET 102541-01-000 (5)
BULB 36196-01-000 (5)

LAMP ASM-BRAKE 121950-01-000 SCREW (SUPPLIED W/LAMP)

LAMP ASM-STOP TURN/TAIL/BACKUP 117831-01-000 RH 117831-02-000 LH
BULB 37984-01-000 (2)
37935-01-000 (2)
SCREW G39-10-48T (8)

LAMP 87201-01-000 SCREW G11-06-12U (EXT) (2)

TO SIDE MARKER LAMP

FASTEN TO VENT.
WRAP BRACKET LEGS AROUND ANTENNA BASE.
CONNECTOR-PLUG-TRAILER (113589-01-000) TO BE SUPPLIED LOOSE IN COACH WITH TRAILER TOW PACKAGE.
TAPE BRANCH BACK ALONG WIRE ASM WITH TAPE 8363-01-000.
RIVET HEAD TO BE ON THE FIBERGLASS SIDE.
INSTALL WITH WIRES TOWARDS ROOF.

NOTES:
FASTEN TO VENT.
WRAP BRACKET LEGS AROUND ANTENNA BASE.
CONNECTOR-PLUG-TRAILER (113589-01-000) TO BE SUPPLIED LOOSE IN COACH WITH TRAILER TOW PACKAGE.
TAPE BRANCH BACK ALONG WIRE ASM WITH TAPE 8363-01-000.
RIVET HEAD TO BE ON THE FIBERGLASS SIDE.
INSTALL WITH WIRES TOWARDS ROOF.

LAMP ASM-SIDE MARKER 117826-01-000(2)
BULB G11-08-12U(EXT) (4)
BULB 36196-01-000 (2)
GASKET 117826-03-000 (2)
SCREW G11-08-12U(EXT) (4)

SEE DWG 76319-01-000 FOR INSTALLATION OF TV ANTENNA.
ADD RUBBER BUMPERS TO ROOF UNDER EACH END OF ANTENNA TO PREVENT CONTACT WITH ROOF.

LAMP-MARKER, BASE 111102-01-000 (2)
LAMP-MARKER, LENSE, AMBER 1111-02-000(2)
SCREW G11-08-12U(EXT) (4)

AIR CONDITIONER (MACH 1 POWERSAVER PLUS)
131186-01-CHT
CEILING ASM
131184-01-CHT
BOARD DIVIDER
131184-02-CHT
(SEE SHT 23 DETAIL AAE FOR WIRING)

SOLAR PANEL 119504-01-000 SCREW G11-08-16U (4)

CONNECTOR-SOCKET, TRAILER SCREW 101618-01-000 (EXT) (2)

- 76C ENTERTAINMENT CTR/EXT CSETTE
- 292 A/C ROOF-HIGH EFFICIENCY
- 240 TRAILER HITCH
- 1D5 ENTERTAINMENT CTR-EXT-W/CD
- 193 TV ANTENNA
- 480 SATellite DISH
- 290 SOLAR PANEL - 10 WATT
- 26L REAR STEREO SYSTEM W/CASSETTE
- 26S CODES/STANDARDS-CSA/CMVSS
- 1B1 CODES STANDARDS/USA

99 L35U		1B1	26S
TITLE: WIRING INSTL-BODY(EX L)			
NO. OF SHEETS	TOTAL SHEETS	DATE	REV
24	24	1.6	
			130513