



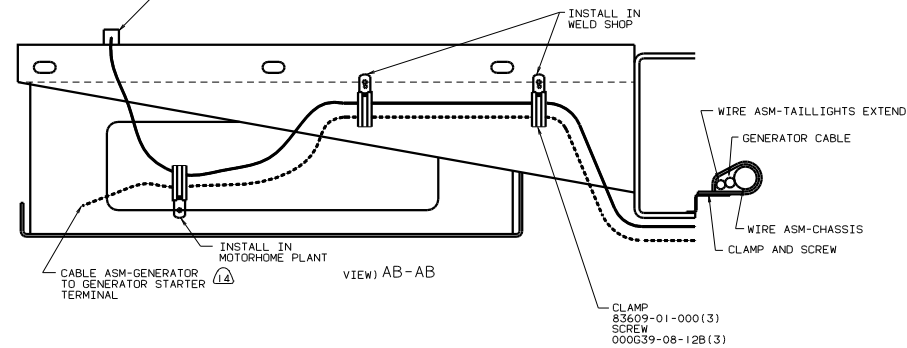
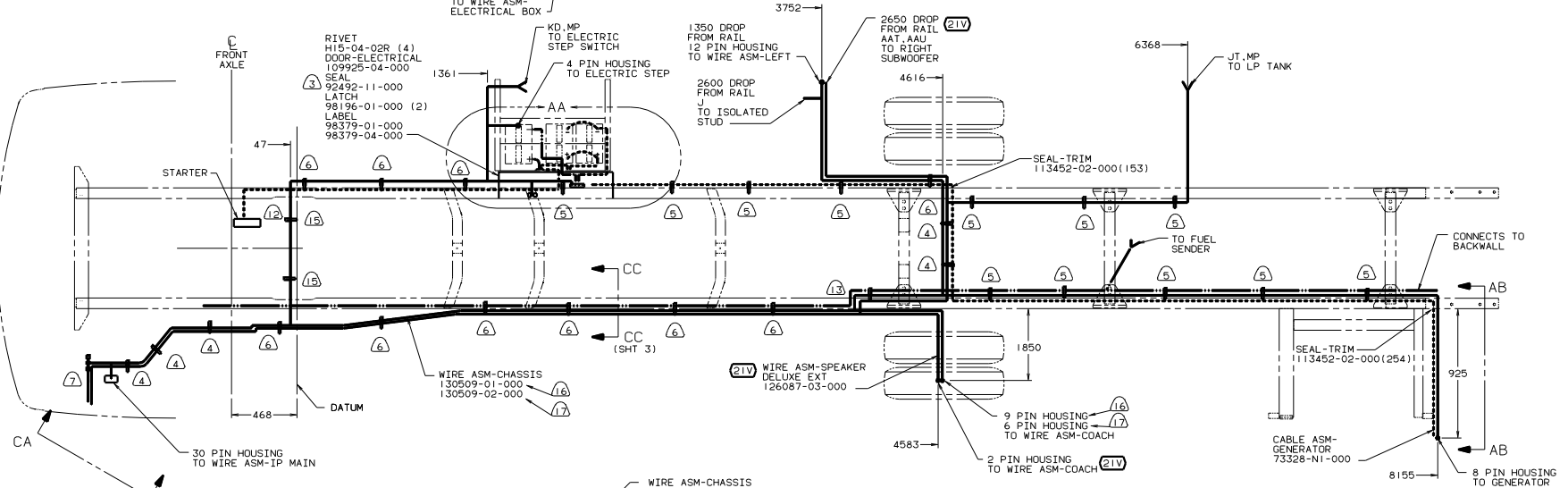
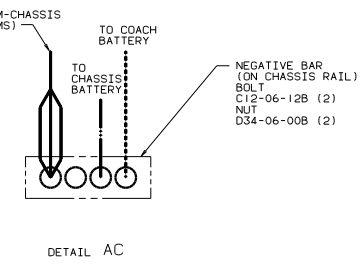
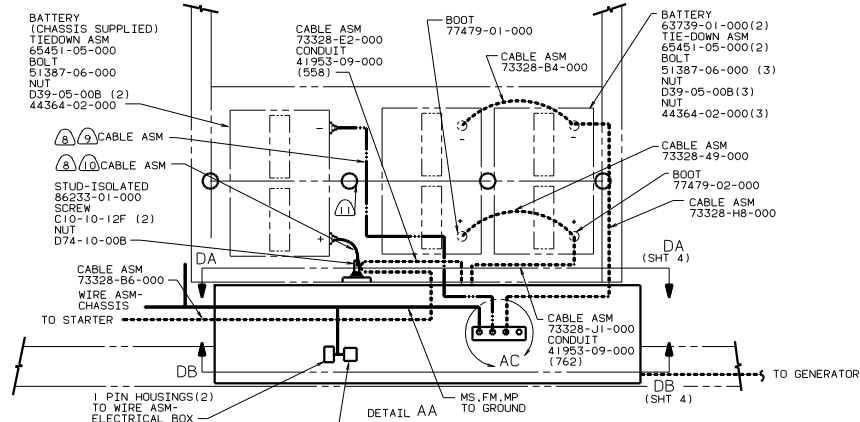
DANGER

Danger of electrical shock, burns or death. Always remove all power sources before attempting any repair, service or diagnostic work. Power can be present from shore power, generator, inverter or battery. All power sources must be disabled and secured before performing any service.



CAUTION

If you lack the skills, tools or equipment to perform diagnostic or repair work leave such work to an authorized Winnebago Industries dealer or other qualified shop.



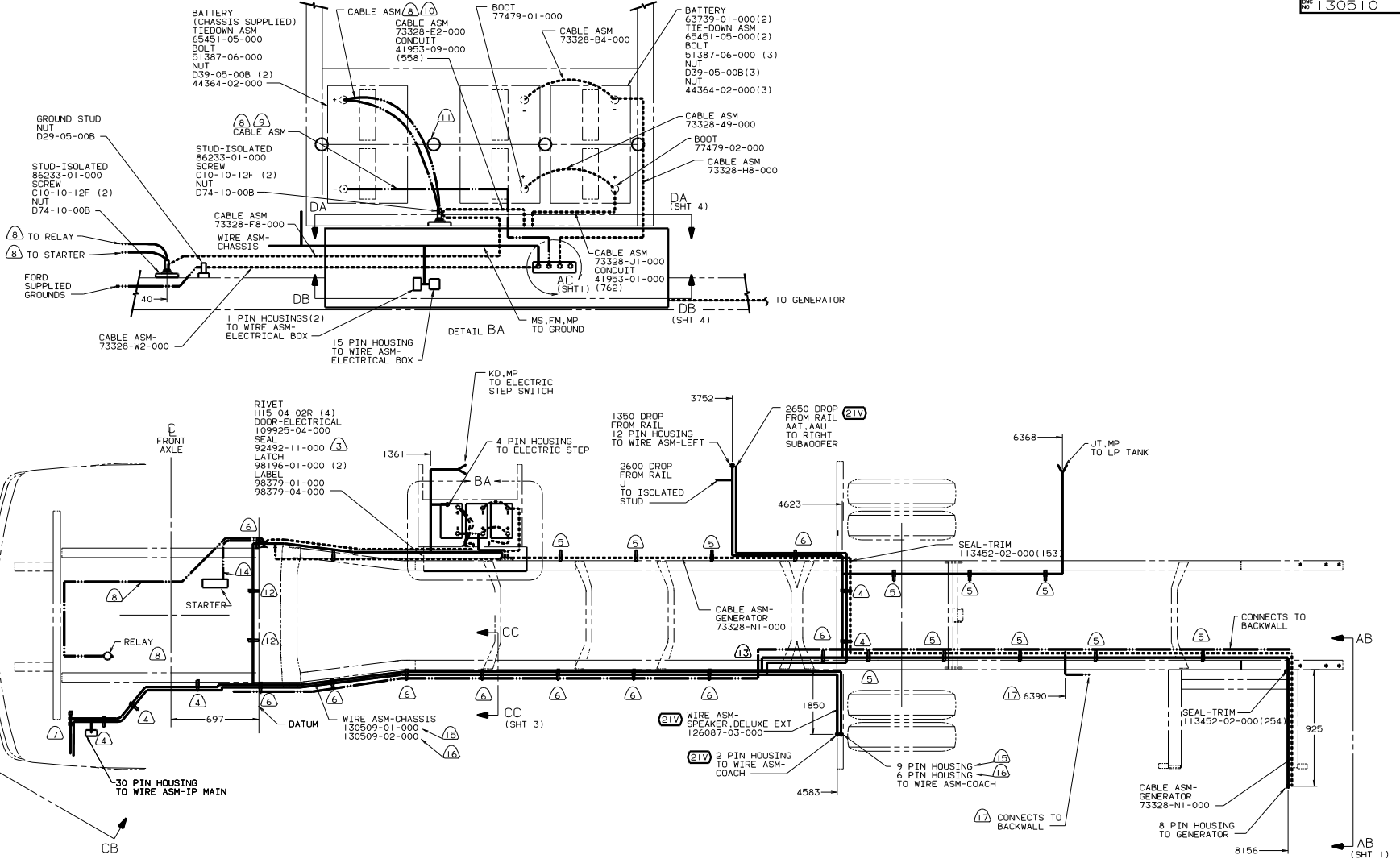
- (14) SECURE SO WIRES DO NOT CONTACT EXHAUST.
- (13) ROUTE CABLES OVER CHASSIS RAIL IN THIS AREA. FOLLOW ORIGINAL CABLE PATHS INSIDE RAIL.
- (12) BATTERY CABLE MUST BE INSTALLED TO STARTER MOTOR BEFORE ENGINE WIRING HARNESS AND ROUTED IN SUCH A MANNER AS TO PREVENT ANY POSSIBLE DEGRADATION FROM THE EXHAUST SYSTEM.
- (11) USE TWO NUTS HERE TO ACCOUNT FOR BATTERY HEIGHT DIFFERENCE.
- (10) TRIM CABLE TO 400MM, ADD TERMINAL 8348-01-000.
- (9) TRIM CABLE TO 600MM, ADD TERMINAL 8348-01-000.
- (8) SUPPLIED WITH CHASSIS.
- (7) SEE WIRING INSTL-FRONT END FOR ADDITIONAL INFORMATION.
- (6) CLAMP 10497-02-000 AND SCREW G39-08-12B.
- (5) CLAMP 83609-01-000 AND SCREW G39-08-12B.
- (4) CLAMP 83610-01-000, SCREW G39-08-12B.
- (3) PLACE AROUND ENTIRE PERIMETER OF DOOR WITH SEAM AT TOP.

- (17) WITH L35C.
- (16) WITH L35U.
- (15) USE WIRE TIE 8343-03-000.

- (265) CODES/STANDARDS-CSA/CMVSS
 - (21V) SOUND SYSTEM-DELUXE
 - (1CV) CHEVROLET CHASSIS-21.000#
 - (1B1) CODES STANDARDS/USA
- 99 L35U (1B1) (265) (1CV)

WINNEBAGO		99 L35C/U
OF IN	DATE	UNDESIGNED TOLERANCES ARE:
CHP	DATE	WHOLE DIM (1:1) F 1:1
PIE	DATE	ONE-PLACE (1:1)
P/E	DATE	TWO-PLACE (1:1)
DATE	DATE	ANGLE
CODE	DATE	THIRD ANGLE PRACTICE
TITLE: WIRING INSTL-CHASSIS		130510
SHEET 1 OF 4	SCALE: NONE	DATE: 11/10/83

FOR ELECTRICAL TORQUE SPECIFICATIONS SEE DWG NO. 128783-01-000



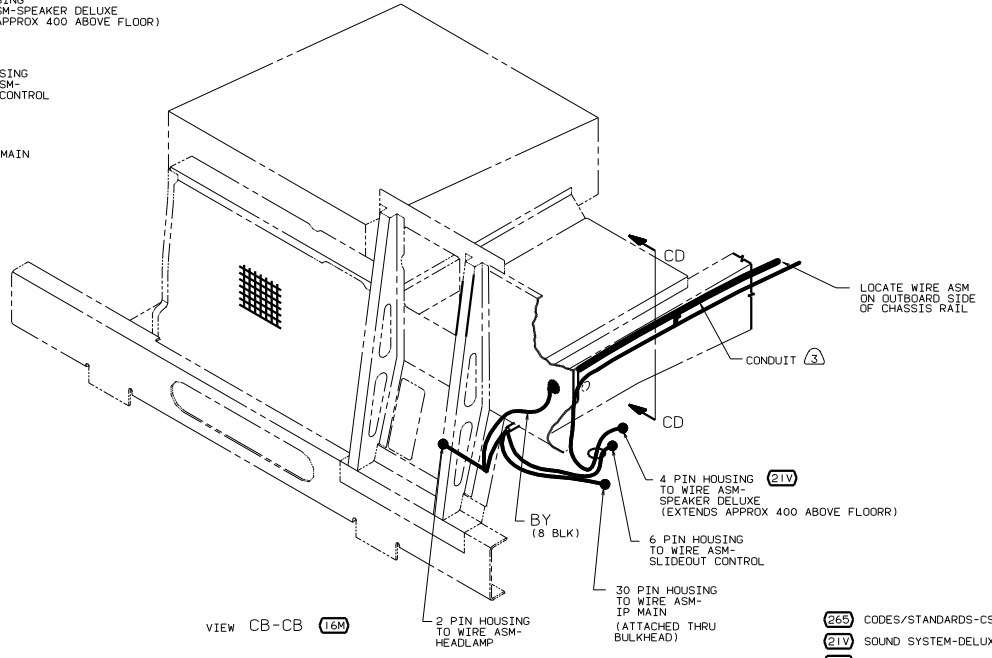
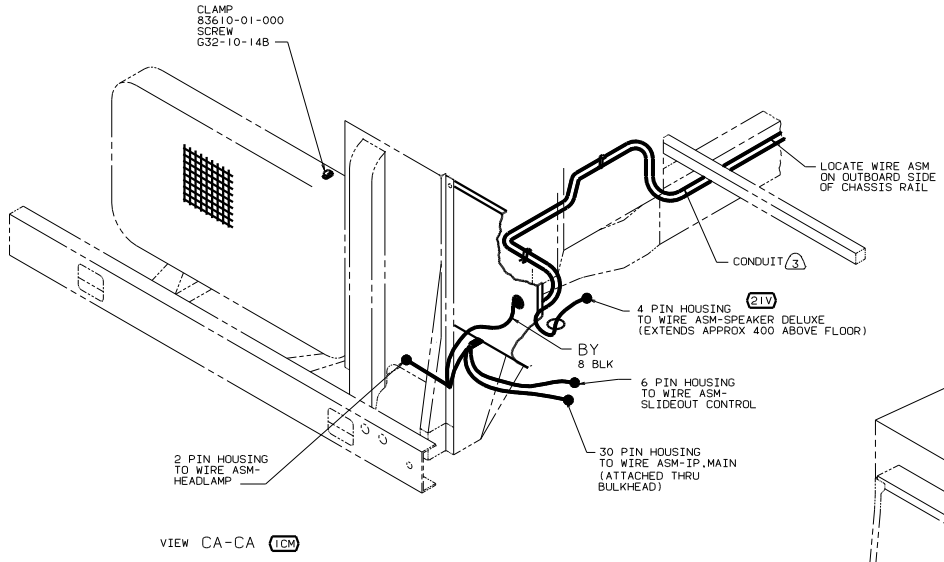
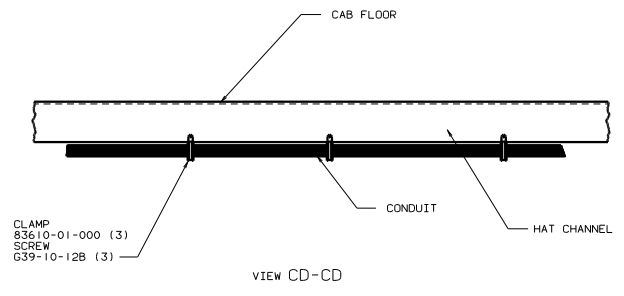
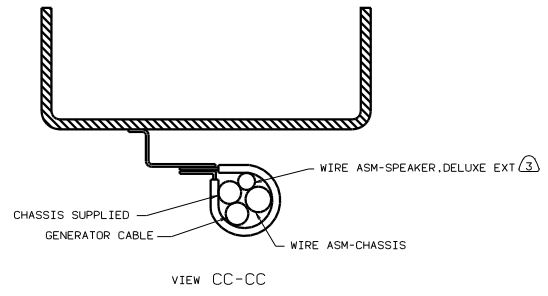
- (2) USE WIRE TIE 8343-03-000.
- (1) USE TWO NUTS HERE TO ACCOUNT FOR BATTERY HEIGHT DIFFERENCE.
- (10) CUT 4 AND 6GA CABLES 500MM FROM BATTERY TERMINAL. ADD TERMINAL 8331-01-000(2) TO 4GA CABLES AND TERMINAL 8360-01-000(2) TO 6GA CABLES. CONNECT ALL FOUR TERMINALS TO ISOLATED STUD.
- (9) TRIM CABLE TO 600MM. ADD TERMINAL 8348-01-000.
- (8) SUPPLIED WITH CHASSIS.
- (7) SEE WIRING INSTL-FRONT END FOR ADDITIONAL INFORMATION.
- (6) CLAMP 10497-02-000 AND SCREW G39-08-000.
- (5) CLAMP 83609-01-000 AND SCREW G39-08-000.
- (4) CLAMP 83610-01-000. SCREW G39-08-12B.
- (3) PLACE AROUND ENTIRE PERIMETER OF DOOR WITH SEAM AT TOP.

- (14) REROUTE BACKWALL WIRING FROM FORD THRU FUEL FILL HOLE IN CHASSIS RAIL ON 208 TO 228 STRETCH UNITS.
- (16) WITH L35C.
- (15) WITH L35U.
- (14) BATTERY CABLE MUST BE INSTALLED TO STARTER MOTOR BEFORE ENGINE WIRING HARNESS AND ROUTED IN SUCH A MANNER AS TO PREVENT ANY POSSIBLE DEGRADATION FROM THE EXHAUST SYSTEM.
- (13) ROUTE CABLES OVER CHASSIS RAIL IN THIS AREA. FOLLOW ORIGINAL CABLE PATHS INSIDE RAIL.

- (265) CODES/STANDARDS-CSA/CMVSS
- (21V) SOUND SYSTEM-DELUXE
- (1B1) CODES STANDARDS/USA
- (16M) FORD CHASSIS-20,500# GVWR

FOR ELECTRICAL TORQUE SPECIFICATIONS SEE DWG NO. 128783-01-000

99 L35C/U (1B1) (265) (16M)
 TITLE: WIRING INSTL-CHASSIS
 SHEET 2 OF 4

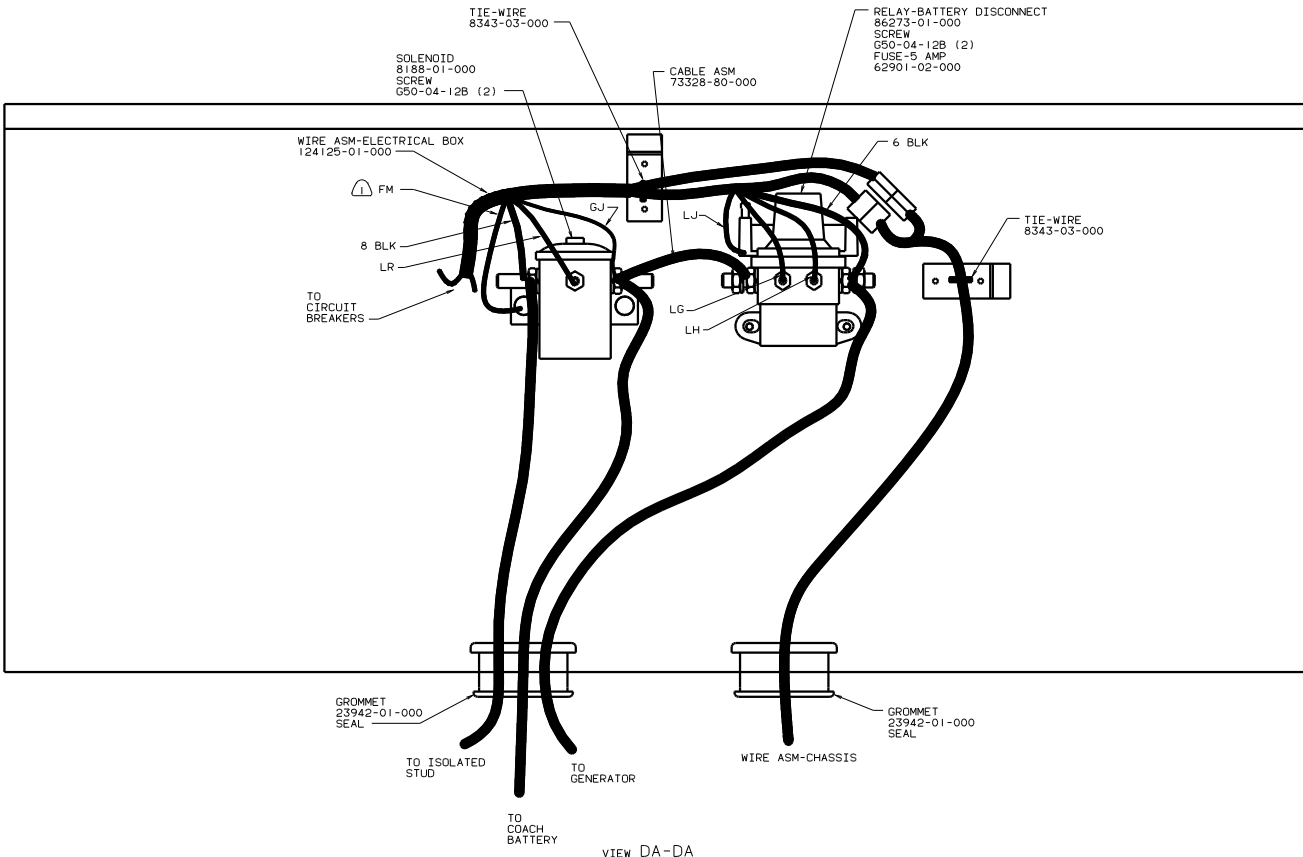


5. CONNECT CABLES TO COACH SIDE OF BATTERY DISCONNECT WHEN BATTERY DISCONNECT IS USED.
4. FOR ADDITIONAL INFORMATION SEE WIRING INSTALATION FRONT END.
- (3) COVER WITH CONDUIT 41953-10-000 AND 41953-11-000 AS REQUIRED.
- (2) SUPPLIED WITH CHASSIS.
1. CUT OFF EXCESS END OF WIRE TIE.

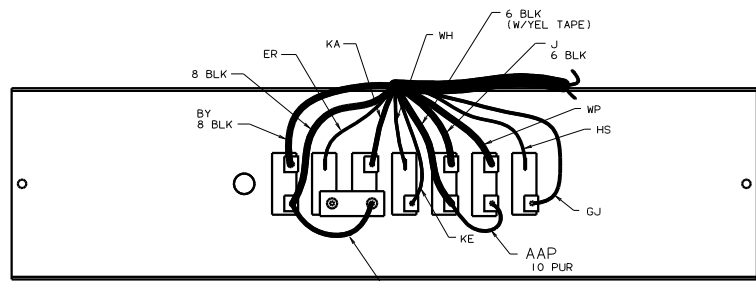
FOR ELECTRICAL TORQUE SPECIFICATIONS SEE DWG NO. 128783-01-000

(265)	CODES/STANDARDS-CSA/CMVSS
(21V)	SOUND SYSTEM-DELUXE
(1B1)	CODES STANDARDS/USA
99 L35C/U (1B1) (265) (21V)	

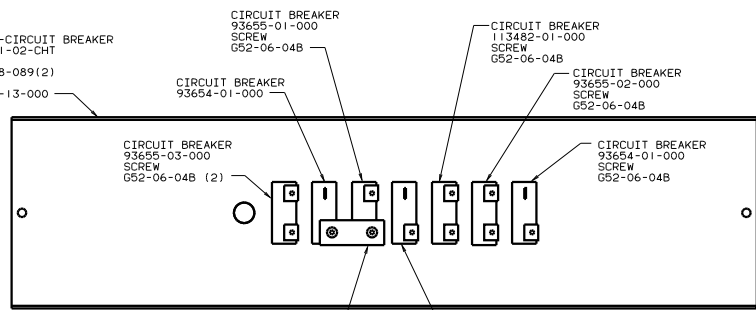
TITLE: WIRING INSTL-CHASSIS	
30 100 SCALE 30000	1/16
SHEET 3 OF 4	130510



VIEW DA-DA



VIEW DB-DB (WIRING)



VIEW DB-DB (HARDWARE)

NOTES: SECURE WITH SOLENOID MOUNTING SCREW.

FOR ELECTRICAL TORQUE SPECIFICATIONS SEE DWG NO. 128783-01-000

(265)	CODES/STANDARDS-CSA/CMVSS
(181)	CODES STANDARDS/USA
99 L35C/U	(181) (265)
TITLE: WIRING INSTL-CHASSIS	
DRAWING NO. 130510	
SHEET 4 OF 4	