



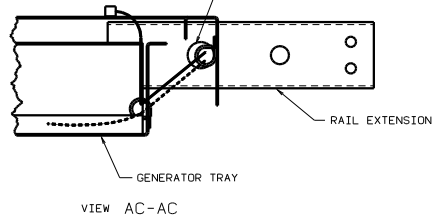
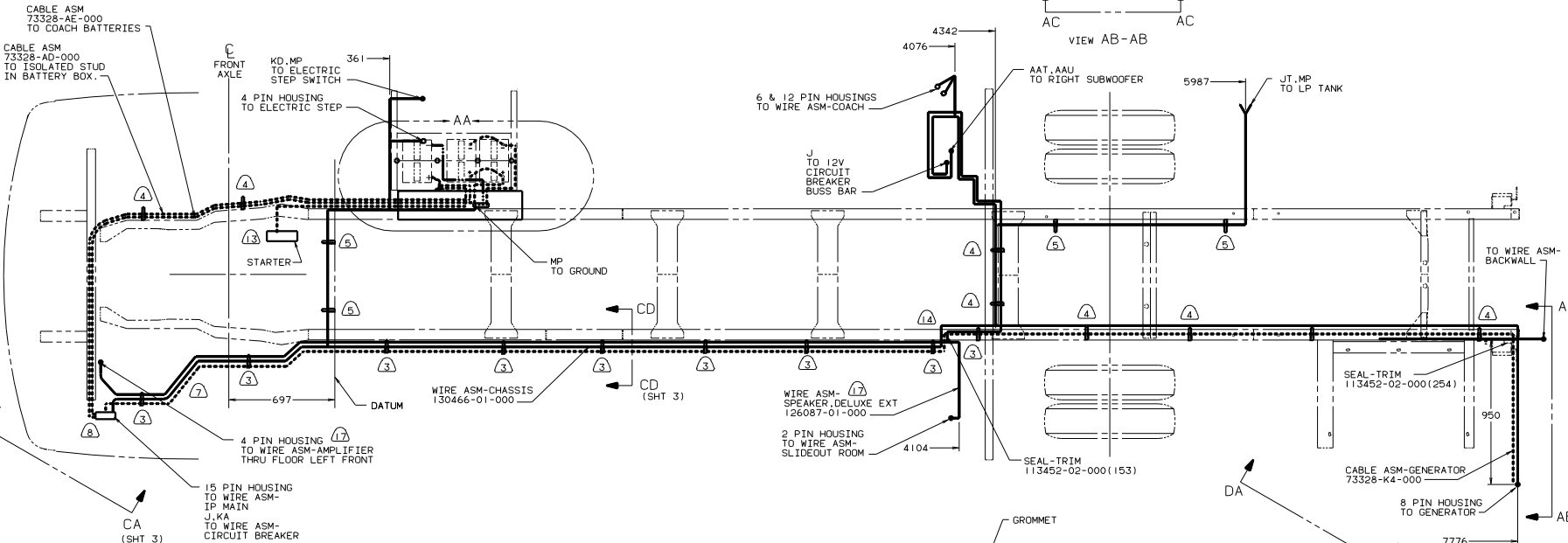
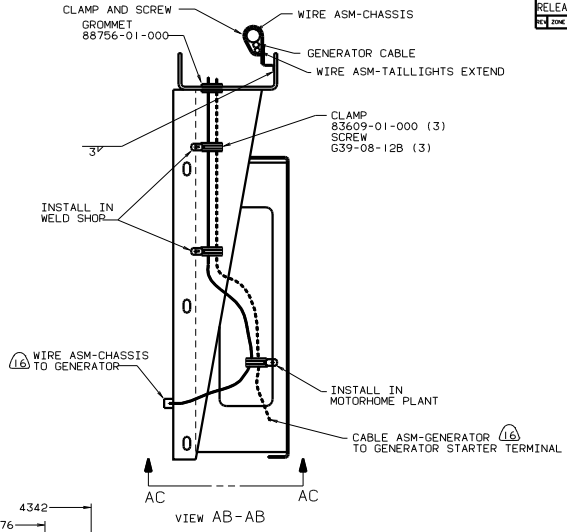
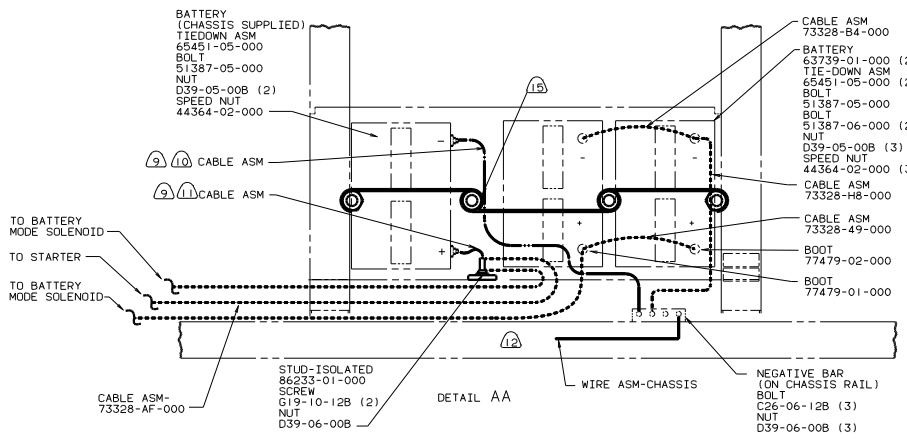
DANGER

Danger of electrical shock, burns or death. Always remove all power sources before attempting any repair, service or diagnostic work. Power can be present from shore power, generator, inverter or battery. All power sources must be disabled and secured before performing any service.



CAUTION

If you lack the skills, tools or equipment to perform diagnostic or repair work leave such work to an authorized Winnebago Industries dealer or other qualified shop.



- ⑫ COVER EDGE OF HOLE THROUGH BATTERY BOX WITH TRIM-VINYL 72368-02-000.
- ⑪ TRIM CABLE TO 400MM, ADD TERMINAL 8348-01-000.
- ⑩ TRIM CABLE TO 800MM, ADD TERMINAL 8348-01-000.
- ⑨ SUPPLIED WITH CHASSIS.
- ⑧ SEE WIRING INSTL-FRONT END FOR ADDITIONAL INFORMATION.
- ⑦ COVER WITH CONDUIT 41953-09-000, 41953-10-000 & 41953-11-000 AS REQUIRED.
- ⑥ ROUTE WIRES AND CABLE OVER SPRING HANGER AND ON TOP OF CHASSIS RAIL AT THIS POINT.
- ⑤ CLAMP 10497-03-000, SCREW G39-08-12B
- ④ CLAMP 83609-01-000, SCREW G39-08-12B
- ③ CLAMP 83610-01-000, SCREW G39-08-12B.
- 2. SECURE CONDUIT 41953-01-000, 41953-02-000 AND 41953-03-000 OVER ALL WIRES IN CONTACT WITH SHARP EDGES.
- 1. LEGEND: — WINNEBAGO, - - - - - CABLE, ——— CHASSIS SUPPLIED.
- ⑬ 21V SOUND SYSTEM DELUXE.
- ⑭ SECURE SO WIRES DO NOT CONTACT EXHAUST.
- ⑮ USE TWO NUTS HERE TO ACCOUNT FOR BATTERY HEIGHT DIFFERENCE.
- ⑯ ROUTE WIRES & CABLE INSIDE CHASSIS RAIL AT THIS POINT & TO THE REAR.
- ⑰ BATTERY CABLE MUST BE INSTALLED TO STARTER MOTOR BEFORE ENGINE WIRING HARNESS AND ROUTED IN SUCH A MANNER AS TO PREVENT ANY POSSIBLE DEGRADATION FROM THE EXHAUST SYSTEM.

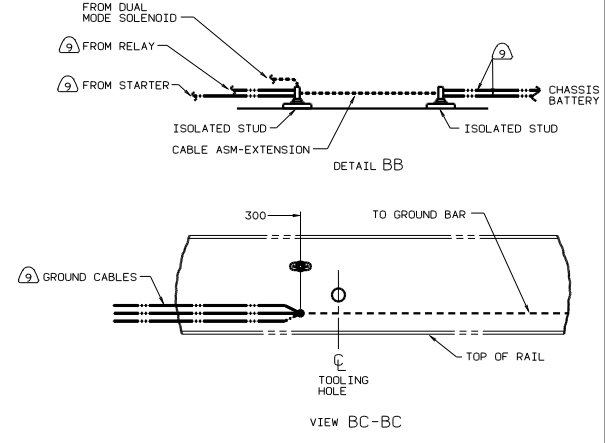
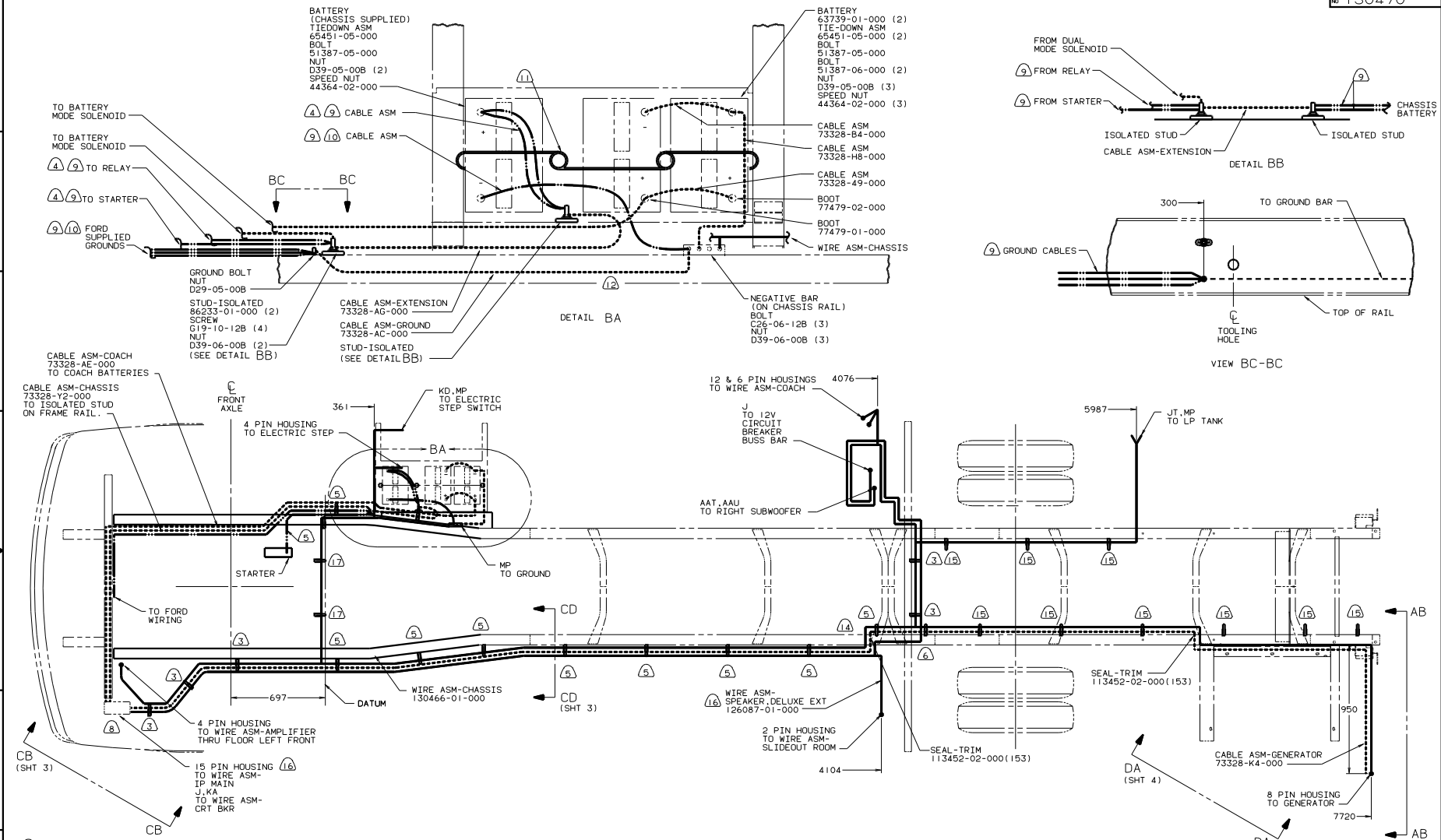
FOR ELECTRICAL TORQUE SPECIFICATIONS SEE DWG NO. 128783-01-000

100 CHEVY CHASSIS GAS
 265 CODES/STDS-CSA/CMVSS
 181 CODES/STANDARDS USA



REV	DATE	DESCRIPTION	MATERIAL
01	08/19/04	ISSUED FOR PRODUCTION	
02	08/19/04	ONE-PLATE (R.21)	
03	08/19/04	ONE-PLATE (R.20)	
04	08/19/04	ANGLE	
05	08/19/04	TRUSS W/ANGLE PROTECTOR	

LAYOUT NO. _____ TITLE: WIRING INSTL-CHASSIS
 REV. NO. _____ DATE: 08/19/04
 ALL DIMENSIONS ARE IN MILLIMETERS SHEET 1 OF 4
 REF: 128267 G 130470

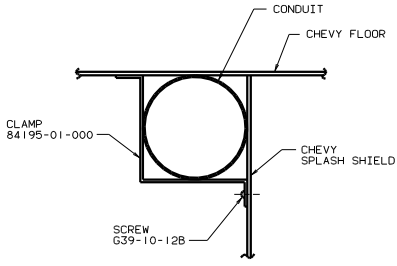


1. LEGEND: — WINNEBAGO, - - - - - CABLE, CHASSIS SUPPLIED.
2. SECURE CONDUIT 41953-01-000, 41953-02-000 AND 41953-03-000 OVER ALL WIRES IN CONTACT WITH SHARP EDGES.
3. CLAMP 83610-01-000, SCREW G39-08-128.
4. CUT 14GA WIRE, 6 & 4GA CABLES 500 MM FROM BATTERY TERMINAL, ADD TERMINAL 8331-01-000(2) TO 4GA CABLES AND TERMINAL 8350-01-000(2) TO 14GA WIRES & 6GA CABLES. CONNECT TERMINALS TO ISOLATED STUDS AS SHOWN IN DETAIL P.
5. CLAMP 10497-03-000, SCREW G39-08-128.
6. ROUTE WIRES AND CABLE OVER SPRING HANGER AND ON TOP OF CHASSIS RAIL AT THIS POINT. ATTACH TO FLOOR SUPPORT OVER AXLE.
7. COVER WITH CONDUIT 41953-09-000, 41953-10-000 & 41953-11-000 AS REQUIRED.
8. SEE WIRING INSTL-FRONT END FOR ADDITIONAL INFORMATION.
9. SUPPLIED WITH CHASSIS.
10. TRIM CABLE TO 500MM, ADD TERMINALS 8348-01-000(2).
11. USE TWO NUTS HERE TO ACCOUNT FOR BATTERY HEIGHT DIFFERENCE.
12. COVER EDGE OF HOLE THROUGH BATTERY BOX WITH TRIM-VINYL 72368-02-000.
13. BATTERY CABLE MUST BE INSTALLED TO STARTER MOTOR BEFORE ENGINE WIRING HARNESS AND ROUTED IN SUCH A MANNER AS TO PREVENT ANY POSSIBLE DEGRADATION FROM THE EXHAUST SYSTEM.
14. ROUTE WIRES & CABLE INSIDE CHASSIS RAIL AT THIS POINT & TO THE REAR.
15. CLAMP 83609-01-000, SCREW G39-08-128.
16. 21V SOUND SYSTEM DELUXE.
17. USE WIRE TIE 8343-03-000

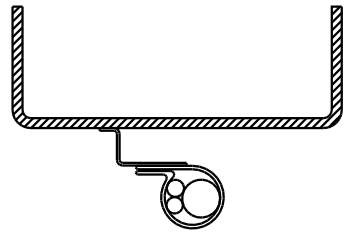
FOR ELECTRICAL TORQUE SPECIFICATIONS SEE DWG NO. 128783-01-000

99 G33B
16D FORD CHASSIS GAS
265 CODES/STDS-CSA/CMVSS
IBI CODES/STANDARDS UAS

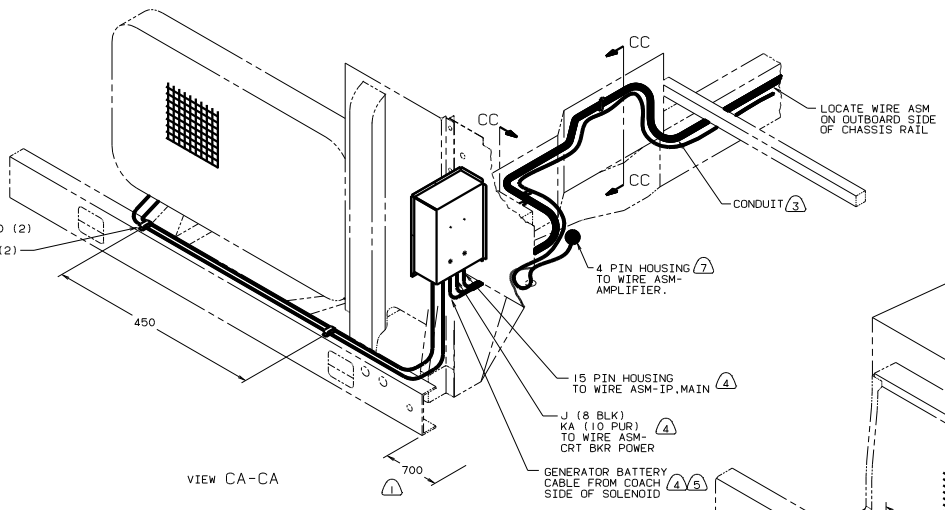
TITLE	WIRING INSTL-CHASSIS
NO. OF SHEETS	2 OF 4
DWG NO.	130470



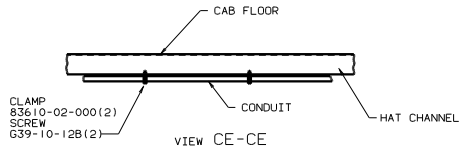
VIEW CC-CC



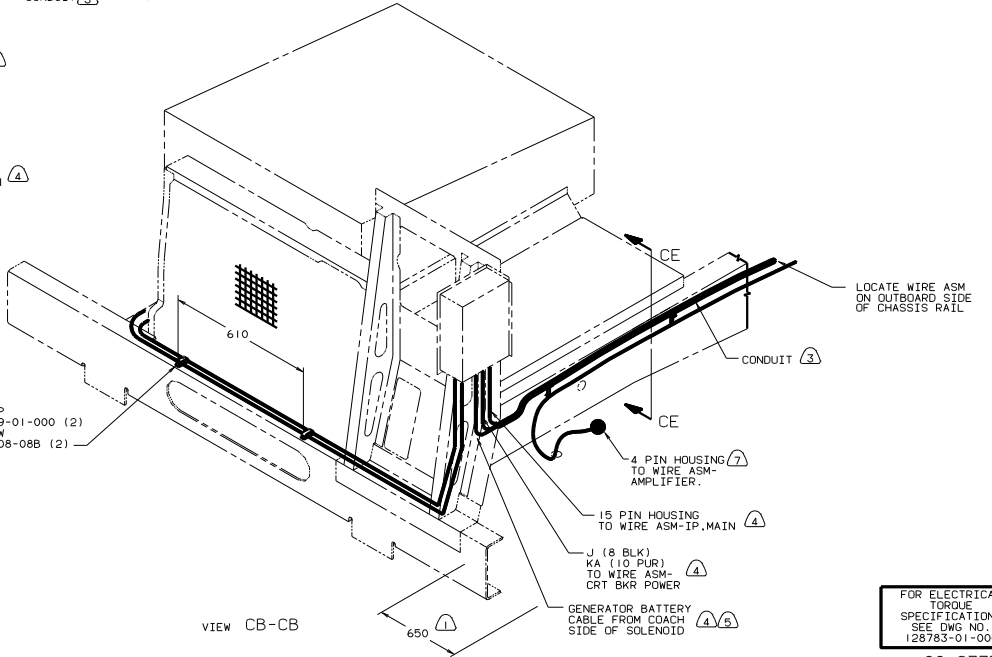
VIEW CD-CD



VIEW CA-CA



VIEW CE-CE



VIEW CB-CB

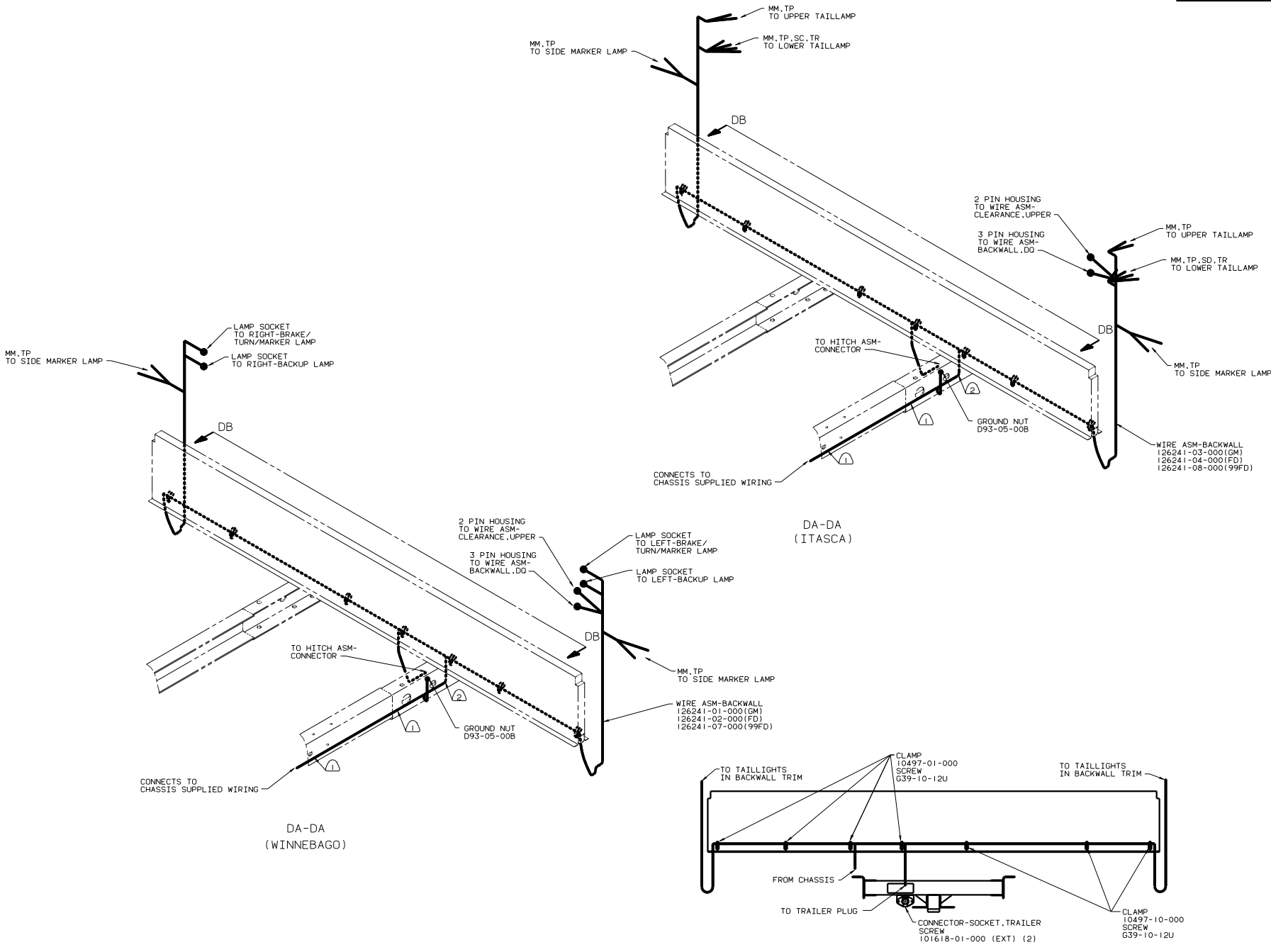
- ⑦ 21V SOUND SYSTEM DELUXE.
- ④ CUT OFF EXCESS END OF WIRE TIE.
- ⑤ CONNECT CABLES TO COACH SIDE OF BATTERY DISCONNECT WHEN BATTERY DISCONNECT IS USED.
- ④ FOR ADDITIONAL INFORMATION SEE WIRING INSTALATION FRONT END.
- ③ COVER WITH CONDUIT 41953-10-000 AND 41953-11-000 AS REQUIRED.
- ② SUPPLIED WITH CHASSIS.
- ① LAY BATTERY AND GENERATOR CABLES TO THIS DIMENSION FROM END OF CROSSMEMBER TO START INSTALLATION.

NOTES:

FOR ELECTRICAL TORQUE SPECIFICATIONS SEE DWG NO. 128783-01-000

99 G33B

TITLE		WIRING INSTL-CHASSIS	
30	NO SCALE	1	1
SHEET 3	OF 4	FIG	NO 130470



- ② WIRE TO BE ROUTED ON BACK SIDE OF RISER.
- ① WIRE TIE 8343-02. FASTEN TO FRAME AT LEAST ONCE EVERY 600MM.

FOR ELECTRICAL TORQUE SPECIFICATIONS SEE DWG NO. 128783-01-000

99 G33B	
TITLE: WIRING INSTL-CHASSIS	
NO. OF SHEETS	TOTAL SHEETS
4 OF 4	4
DWG NO. 130470	