



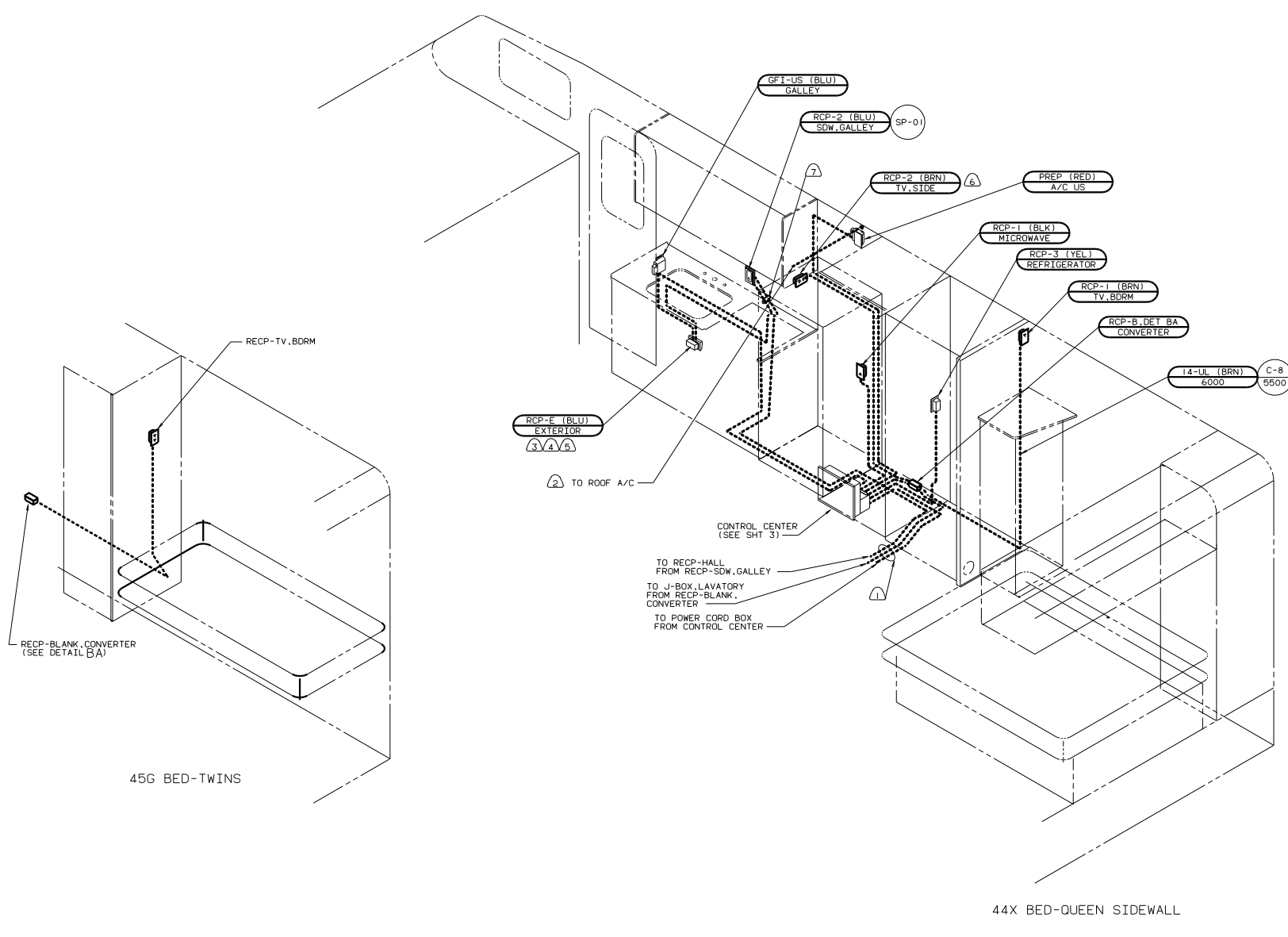
DANGER

Danger of electrical shock, burns or death. Always remove all power sources before attempting any repair, service or diagnostic work. Power can be present from shore power, generator, inverter or battery. All power sources must be disabled and secured before performing any service.

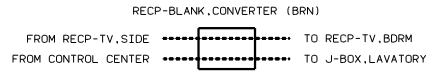


CAUTION

If you lack the skills, tools or equipment to perform diagnostic or repair work leave such work to an authorized Winnebago Industries dealer or other qualified shop.



- NOTES:
- ⑦ ROUTE WIRE THRU SIDEWALL.
 - ⑥ SEE WIRING INSTL-TV/VCR.SIDE FOR ADDITIONAL INFORMATION.
 - ⑤ NOT USED WITH 76C ENTERTAINMENT CTR-EXT.
 - ④ SEE ENT CTR INSTL-EXT FOR ADDITIONAL INFORMATION.
 - ③ SEAL BACK SIDE OF RECP FACE.
 - ② ROUTE WIRE THRU ROOF.
 - ① ROUTE WIRE THRU FLOOR.



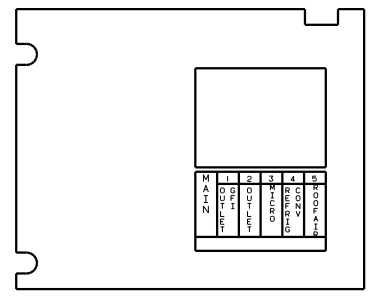
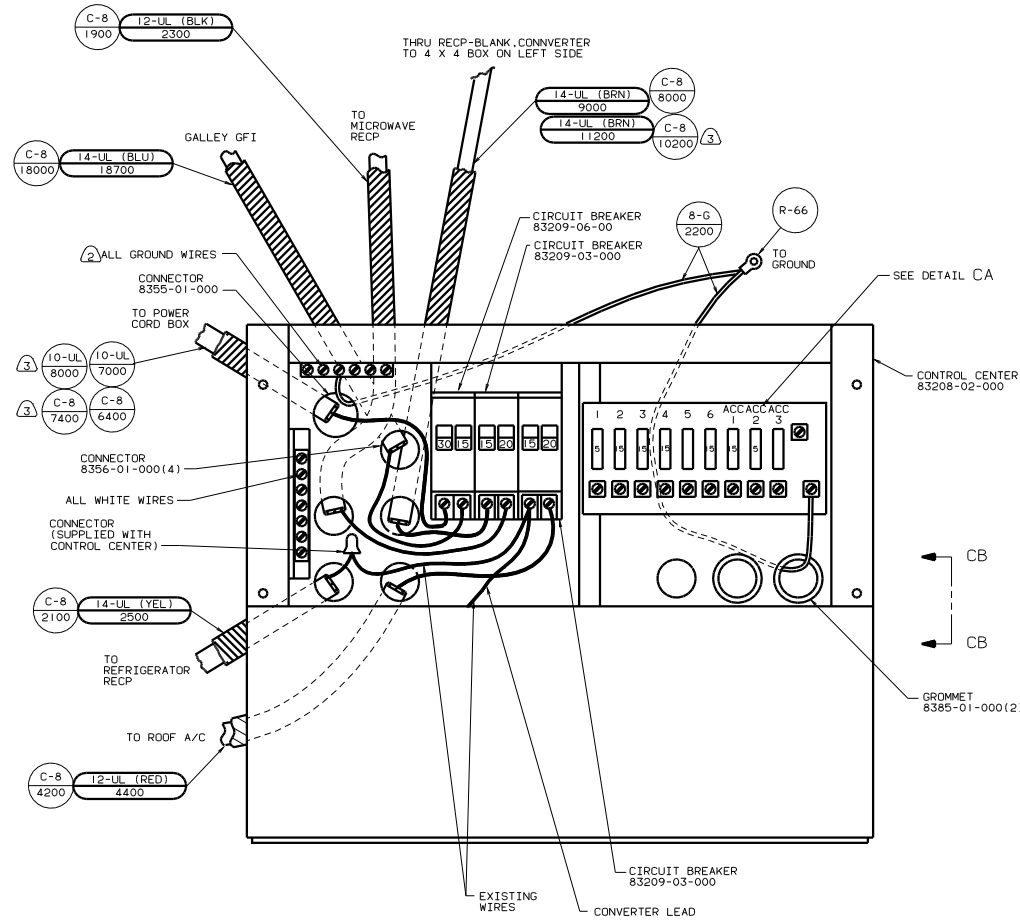
DETAIL BA

FOR ELECTRICAL TORQUE SPECIFICATIONS SEE DWG NO. 128783-01-000

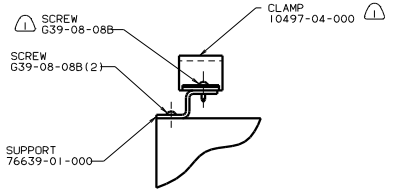
FOR ELECTRICAL CALLOUTS SEE DWG NO. 121339-01-000

99 331C
RIGHT SIDE
12D ELECTRICAL SYS-30 AMP
IB1 CODE STANDARDS-USA

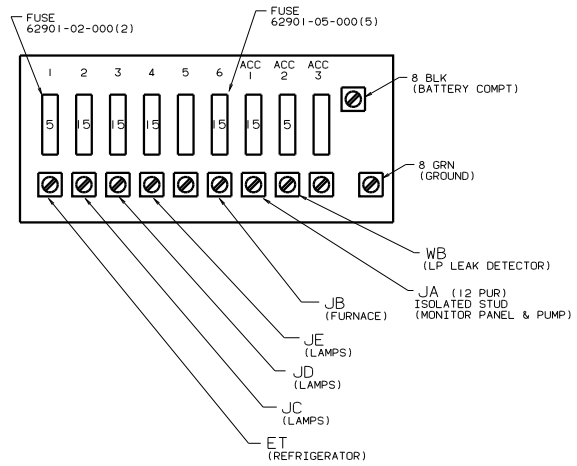
FILE NO.	130371
REV.	1.0
SHEET	2 OF 10



PANEL-COVER



VIEW CB-CB



DETAIL CA

- 3) 45G. BED-TWIN.
- 2) ALL GROUND WIRES TO BE COVERED WITH TUBING 8041-02-000.
- 1) FASTEN ALL WIRES TO SUPPORT. USE ONE SCREW PER CLAMP.

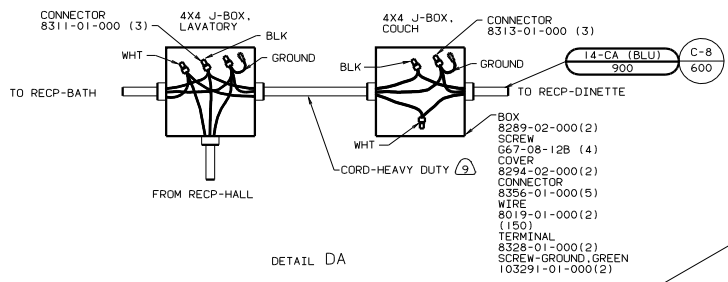
FOR ELECTRICAL TORQUE SPECIFICATIONS SEE DWG NO. 128783-01-000

X-X

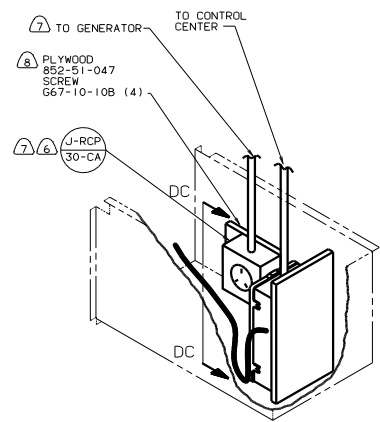
FOR ELECTRICAL CALLOUTS SEE DWG NO. 121339-01-000

99 331C
CONTROL CENTER
12D ELECTRICAL SYS-30 AMP
1B1 CODE STANDARDS-USA

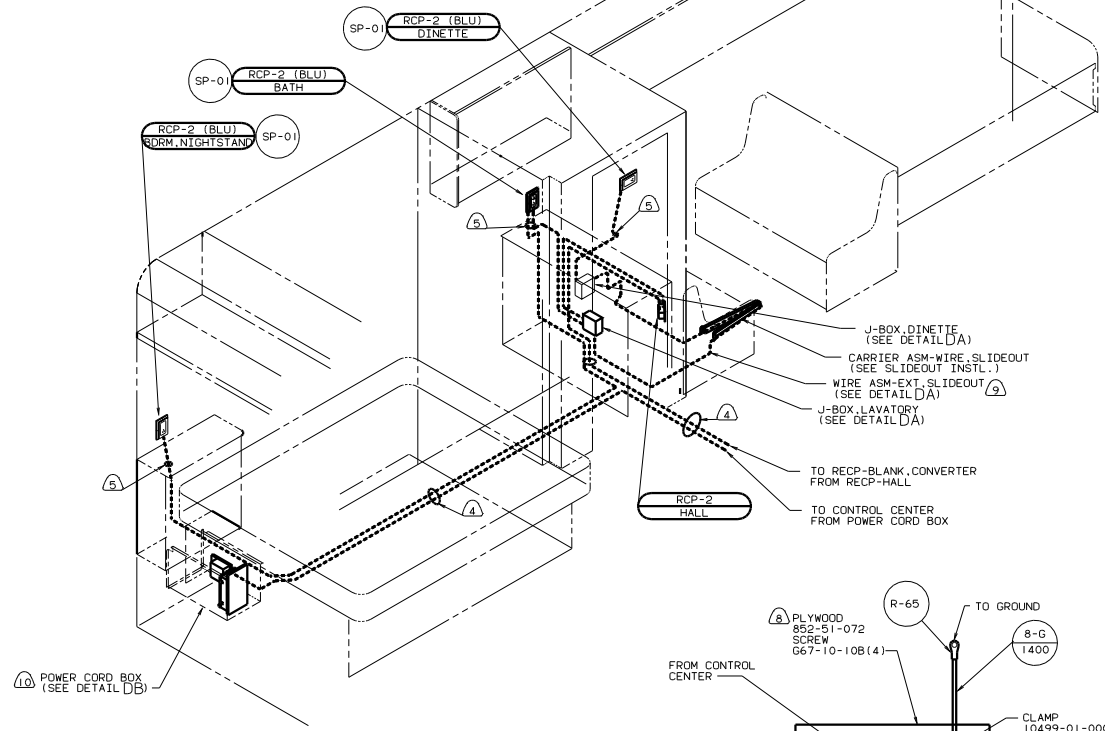
WIRING INSTL-BODY(30 CC US)	
NO. OF SHEETS	TOT. SHEETS
3 OF 10	10
SHEET NO.	130371



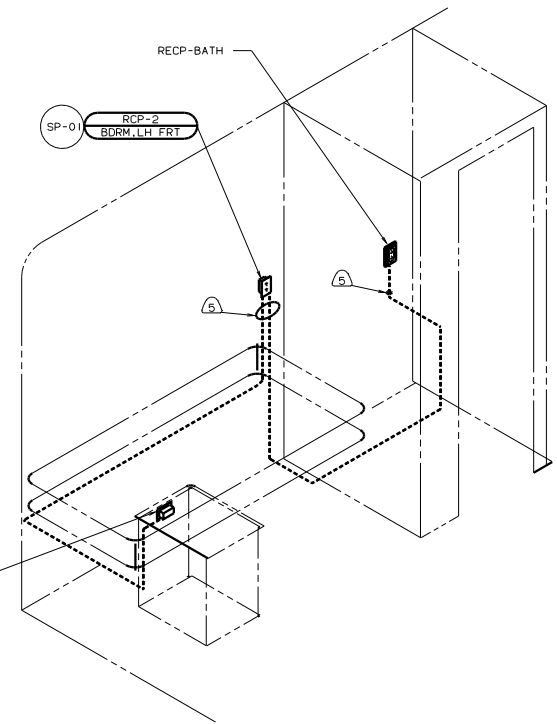
DETAIL DA



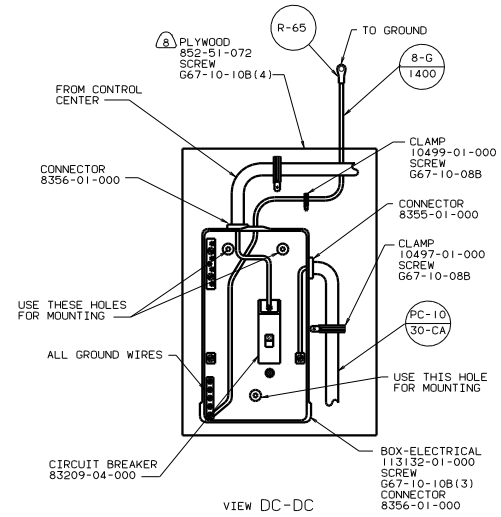
DETAIL DB



49X BED-QUEEN, CENTERED



45G BED-TWINS



VIEW DC-DC

- 10 SEE GENERATOR INSTL FOR ADDITIONAL INFORMATION.
- 9 CORD IS PART OF WIRE ASM-EXT.SLIDEOUT CALLED OUT ON SHT 7.
- 8 PAINT EXPOSED SURFACES BLACK WITH 106112-01-000.
- 7 40N GEN-4.0KW, MICROLITE, GAS OR 52G GEN-3.6KW, MICROLITE, LP. SEE GENERATOR INSTL FOR ADDITIONAL INFORMATION.
- 6 INSTALL RECP WITH GROUND TOWARD OUTBOARD SIDE OF VEHICLE.
- 5 ROUTE WIRE THRU SIDEMALL.
- 4 ROUTE WIRE THRU FLOOR.

- 3. ALL GROUND WIRES TO BE COVERED WITH TUBING 8041-02-000.
- 2. ALL WIRES ARE TO BE CLAMPED WITH CLAMP 10497-05-000 WITHIN 200 OF OUTLET BOXES. USE SCREW 667-10-12B UNLESS OTHERWISE SPECIFIED.
- 1. ALL WIRE TO BE CLAMPED WITH CLAMP 10495-01-000 OR CLIP 80734-02-000 EVERY 600. USE SCREW 667-10-12B UNLESS OTHERWISE SPECIFIED.

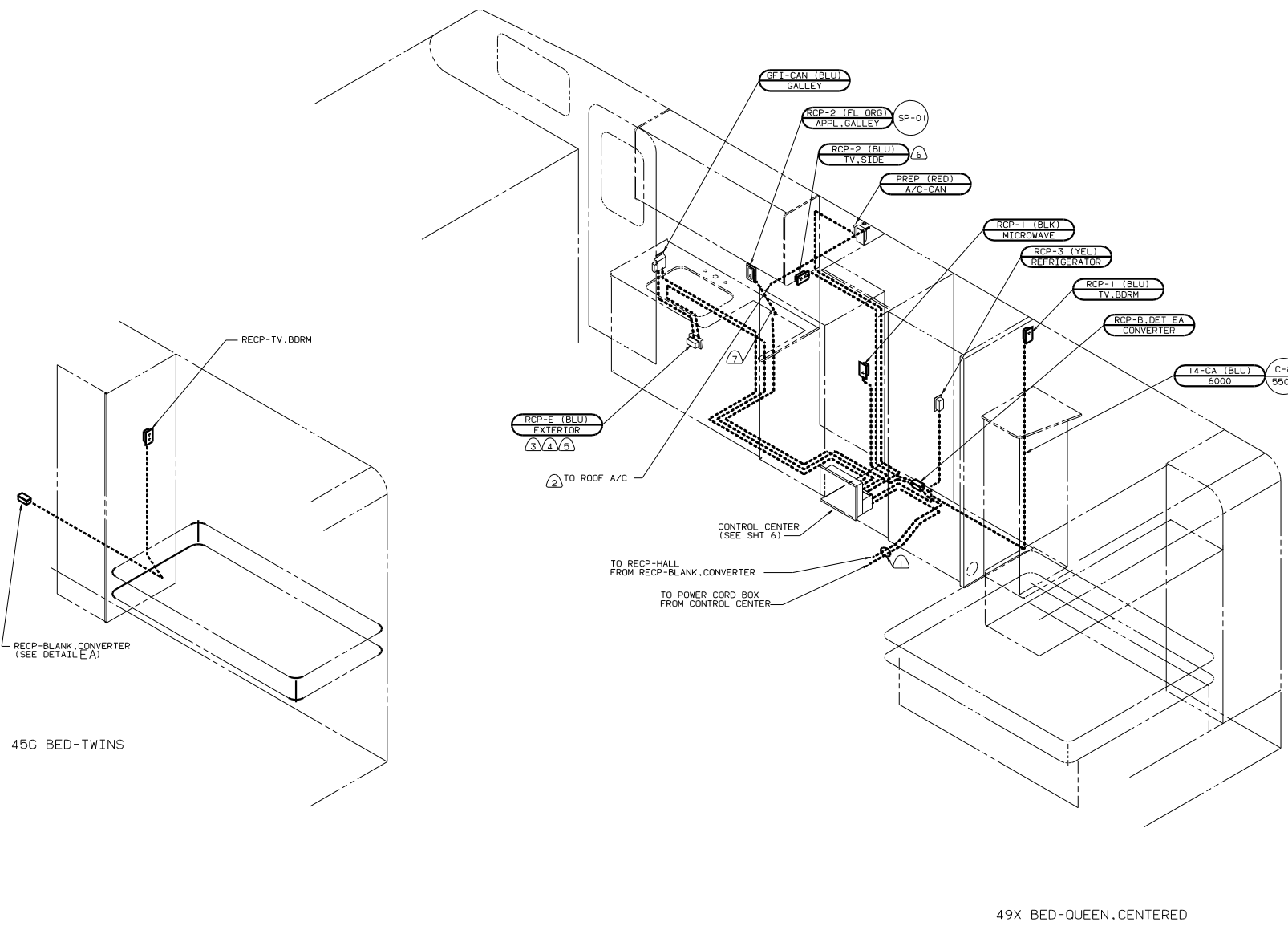
NOTES:

FOR ELECTRICAL TORQUE SPECIFICATIONS SEE DWG NO. 128783-01-000

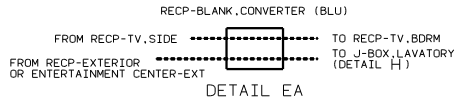
FOR ELECTRICAL CALLOUTS SEE DWG NO. 121339-01-000

99 331C LEFT SIDE 12D ELECTRICAL SYS-30 AMP 265 CODE STANDARDS-CSA

WIRING INSTL-BODY (110130CAN)
 SHEET 4 OF 10
 130371



- NOTES:
- ⑦ ROUTE WIRE THRU SIDEWALL.
 - ⑥ SEE WIRING INSTL-TV/VCR SIDE FOR ADDITIONAL INFORMATION.
 - ⑤ NOT USED WITH 76C ENTERTAINMENT CTR-EXT.
 - ④ SEE ENT CTR INSTL-EXT FOR ADDITIONAL INFORMATION.
 - ③ SEAL BACK SIDE OF RECP FACE.
 - ② ROUTE WIRE THRU ROOF.
 - ① ROUTE WIRE THRU FLOOR.

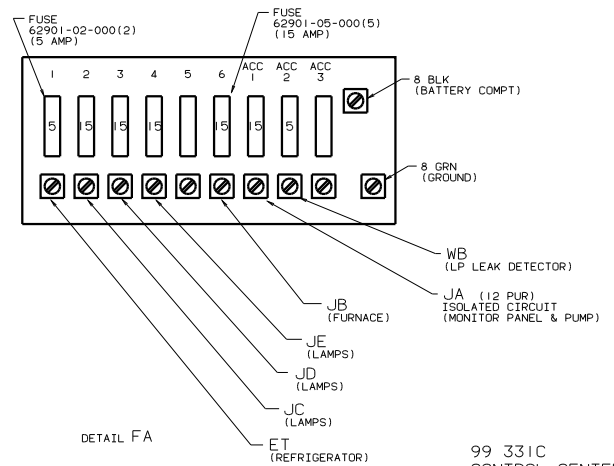
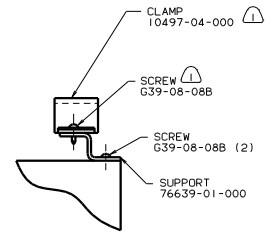
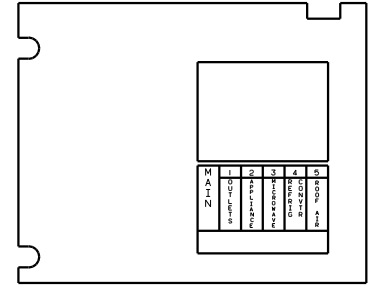
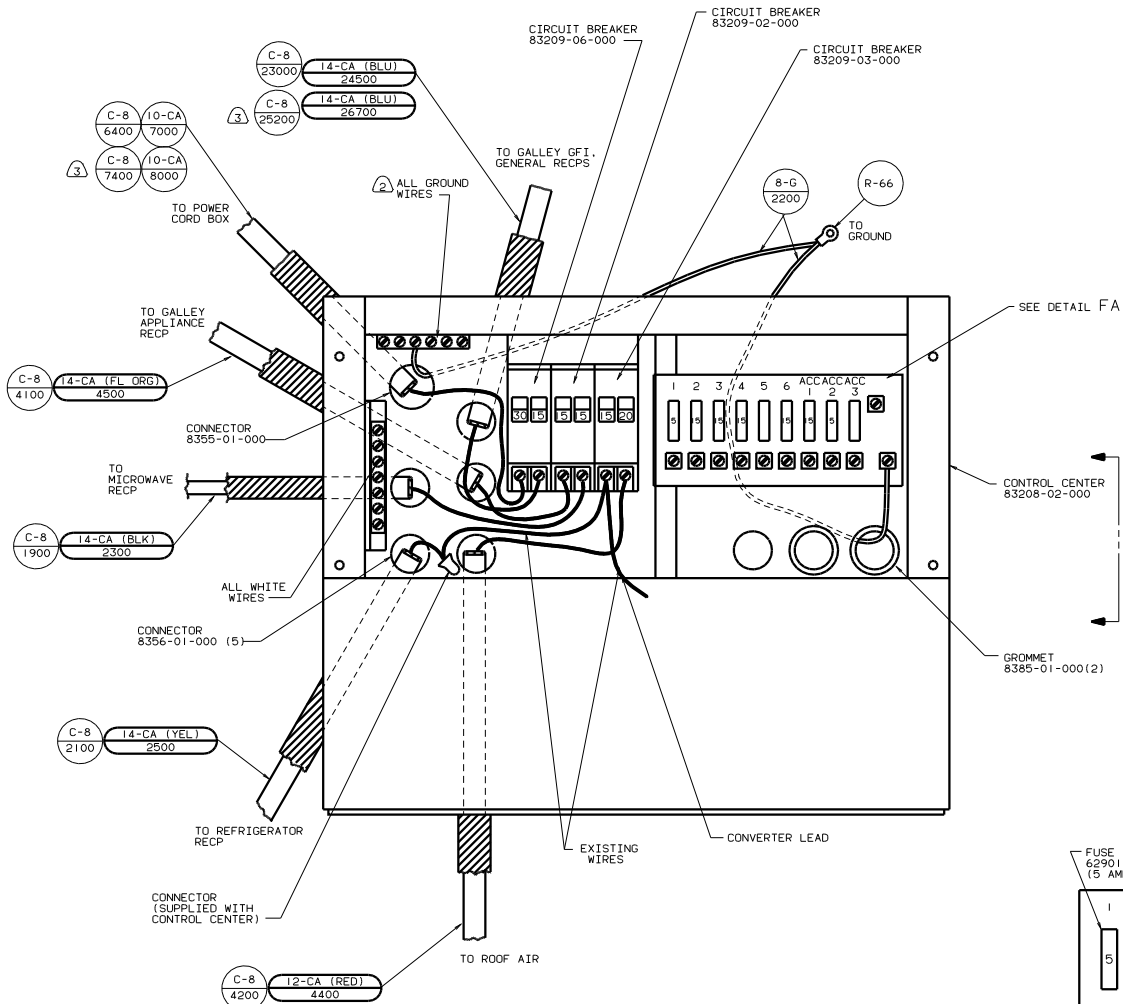


FOR ELECTRICAL TORQUE SPECIFICATIONS SEE DWG NO. 128783-01-000

FOR ELECTRICAL CALLOUTS SEE DWG NO. 1215339-01-000

99 331C
12D ELECTRICAL SYS-30 AMP
265 CODE STANDARDS-CSA

TITLE: WIRING INSTL-BODY (110R30CAN)
SHEET 5 OF 10

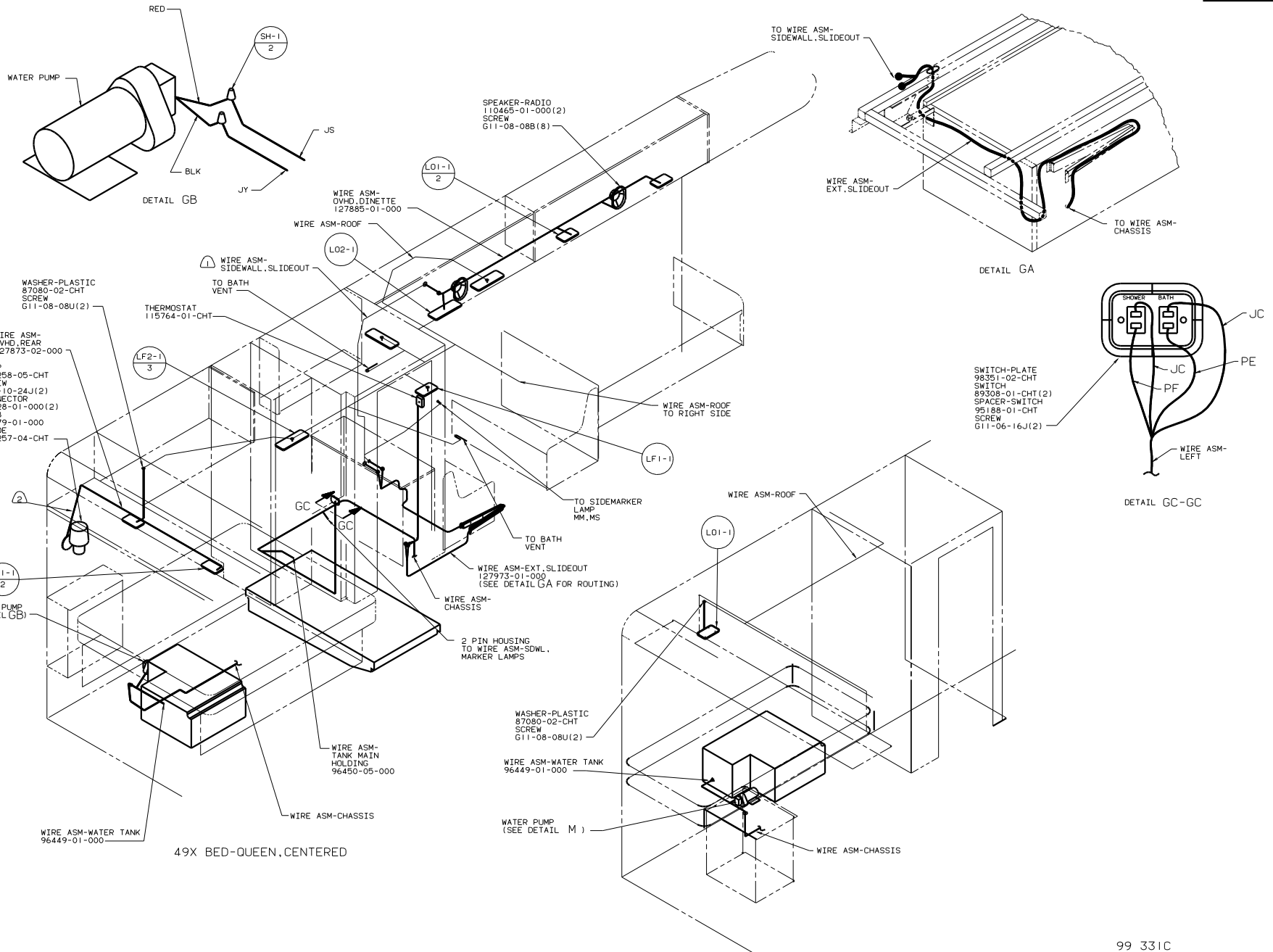


- NOTES:
- ③ 45G BED-TWIN.
 - ② ALL GROUND WIRES TO BE COVERED WITH TUBING 8041-02-000.
 - ① FASTEN ALL WIRES TO SUPPORT. USE ONE SCREW PER CLAMP.

FOR ELECTRICAL TORQUE SPECIFICATIONS SEE DWG NO. 128783-01-000	X-X	FOR ELECTRICAL CALLOUTS SEE DWG NO. 121339-01-000
--	-----	---

99 331C
CONTROL CENTER
12D ELECTRICAL SYS-30 AMP
265 CODE STANDARDS-CSA

TITLE	WIRING INSTL-BODY(30 CC CAN)
NO. OF SHEETS	1
SHEET NO.	6 OF 10
DATE	11/01/00
DRWING NO.	130371



- ② ROUTE WIRE IN SIDEWALL.
- ① WIRE IN SIDEWALL.

NOTES:

45G BED-TWINS
(LEFT SIDE)

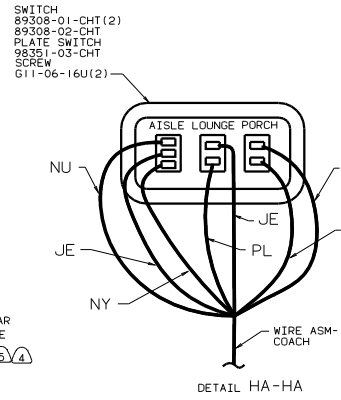
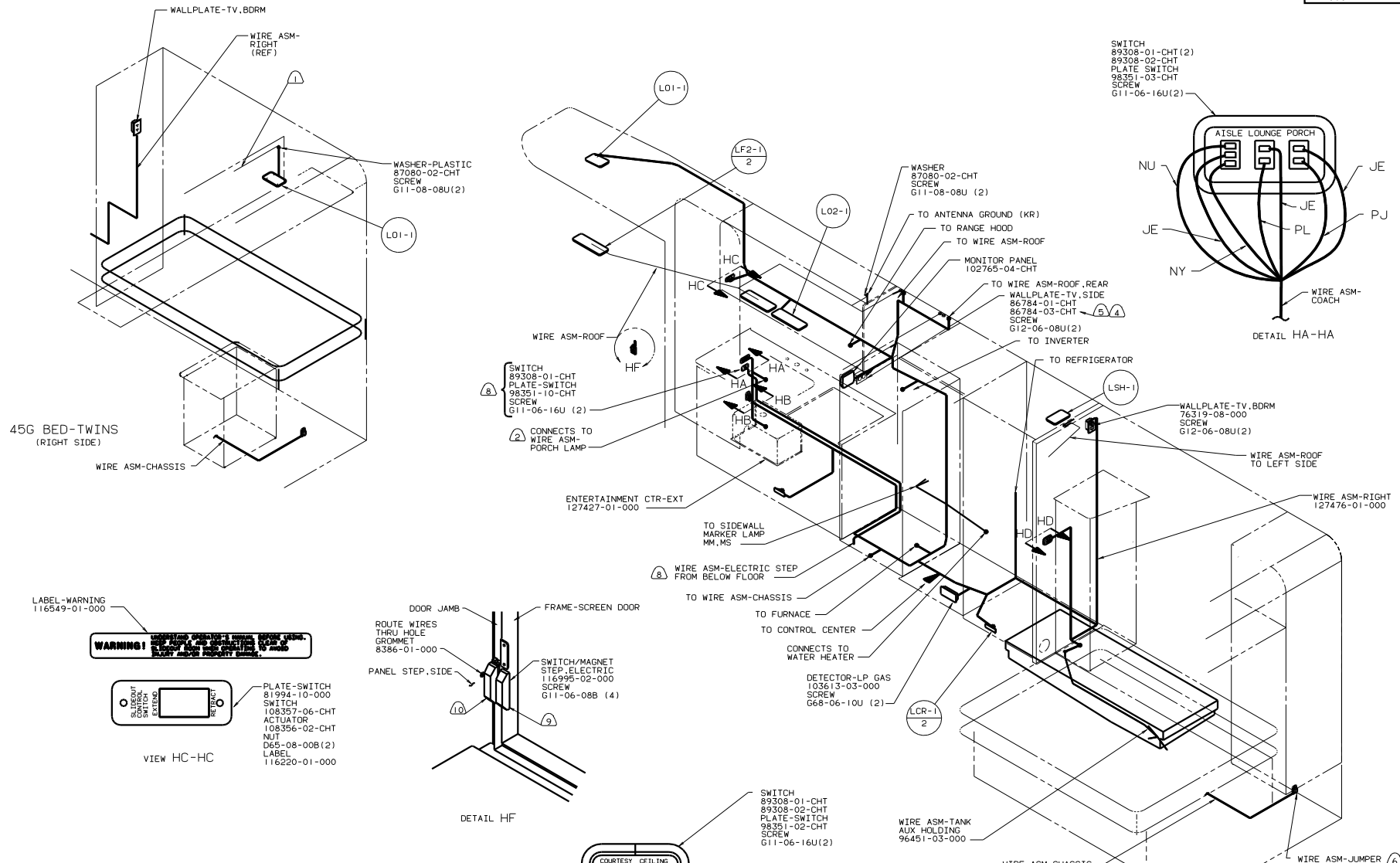
49X BED-QUEEN, CENTERED

FOR ELECTRICAL
TORQUE
SPECIFICATIONS
SEE DWG NO.
128783-01-000

(X-X)
FOR ELECTRICAL
CALLOUTS
SEE DWG NO.
121339-01-000

99 331C
12V LEFT SIDE
265 CODE STANDARDS-CSA
181 CODE STANDARDS-USA

TITLE: WIRING INSTL-BODY(12 L)	
30 101 344 34400	128 101 344 34400
SHEET 7 OF 10	130371



45G BED-TWINS
(RIGHT SIDE)

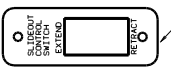
VIEW HC-HC

DETAIL HF

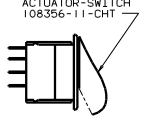
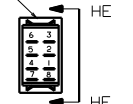
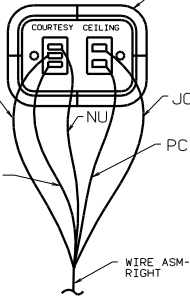
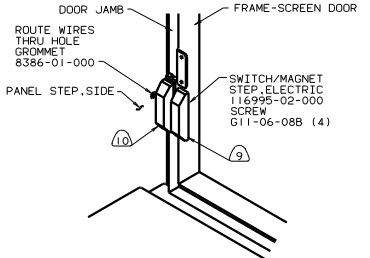
DETAIL HD-HD

49X BED-QUEEN,CENTERED

- ⑩ MOUNT SWITCH AND SPACER TO BLOCK ON JAMB. ADJUST HEIGHT TO MATCH MAGNET.
- ⑨ MOUNT MAGNET USING P/TLOL HOLES IN SCREEN DOOR FRAME. MOUNT WITH MAGNET TOWARD SWITCH
- ⑧ IE2 DOOR_STEP-MAIN,SINGLE ELECTRIC W/DOOR JAMB SWITCH.
- ⑦ 64R EXTERIOR WASH STATION.
- ⑥ NOT USED WITH 64R EXTERIOR WASH STATION.
- ⑤ 42T TV-19" FRT & SW-SYS OR 210 TV-19" W/VCR/SW-SYS.
- ④ SEE WIRING INSTL-TV/VCR SIDE FOR ADDITIONAL INFORMATION.
- ③ 76C ENTERTAINMENT CTR-EXT. W/CASSETTE
- ② WIRE ROUTED IN SIDEWALL.
- ① WIRE ROUTED IN ROOF.



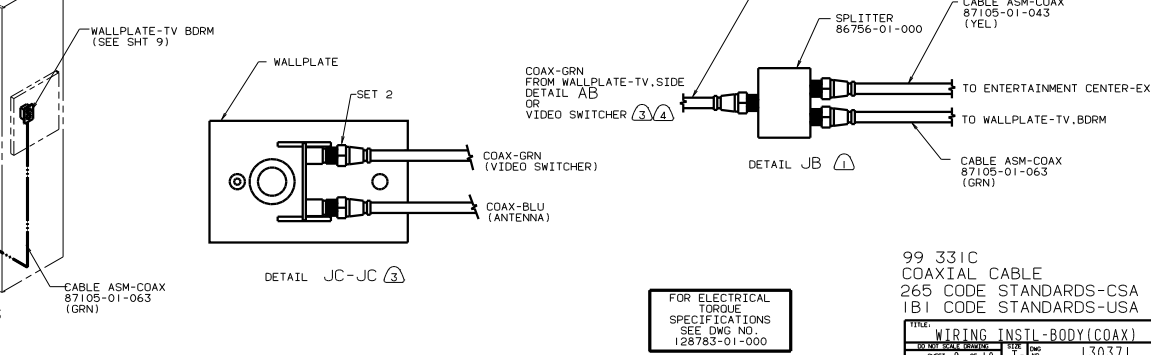
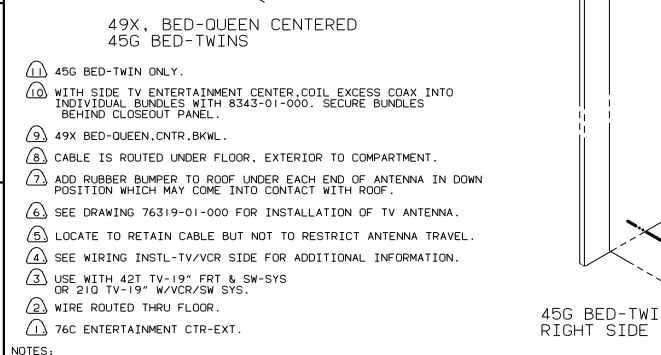
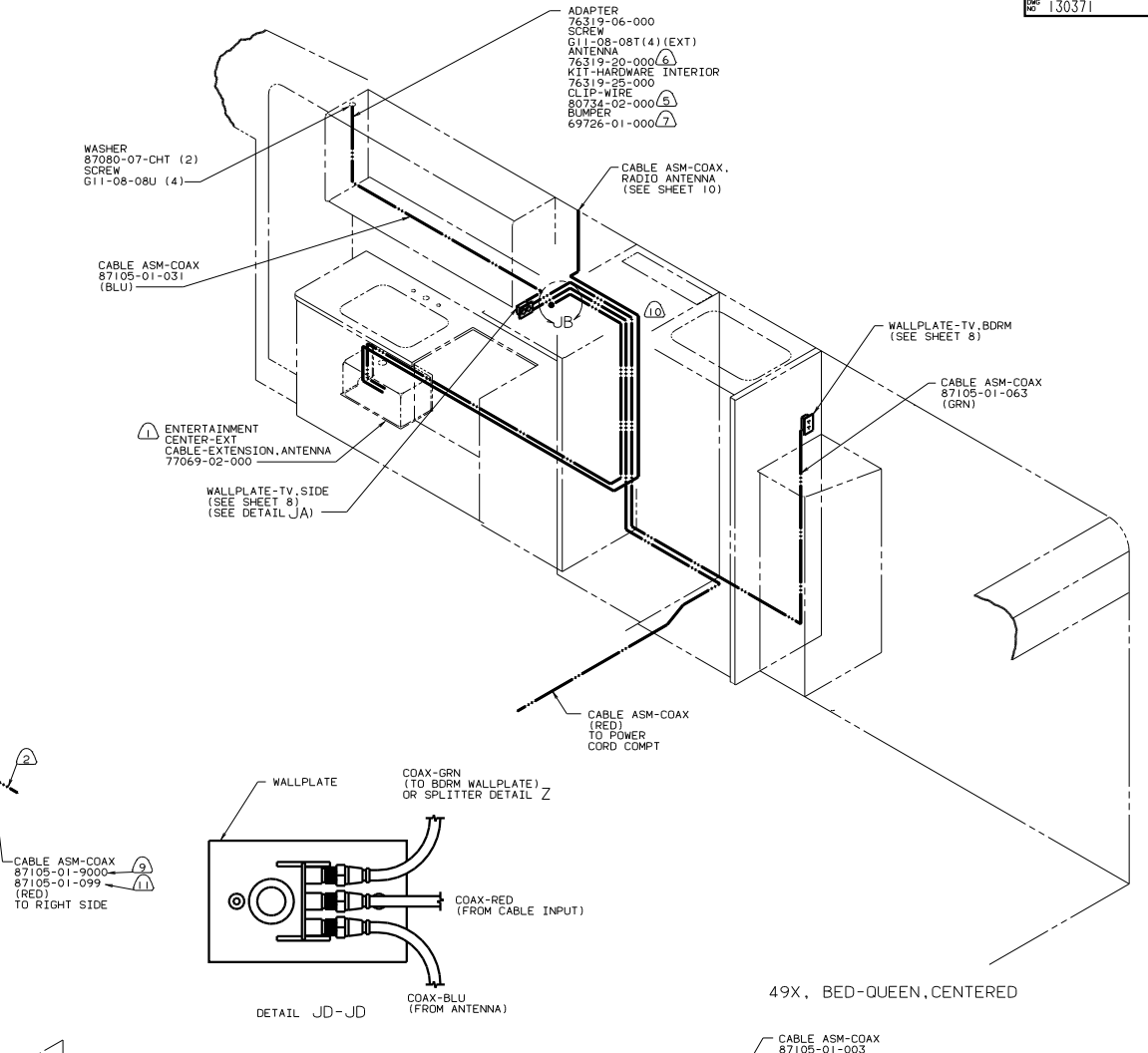
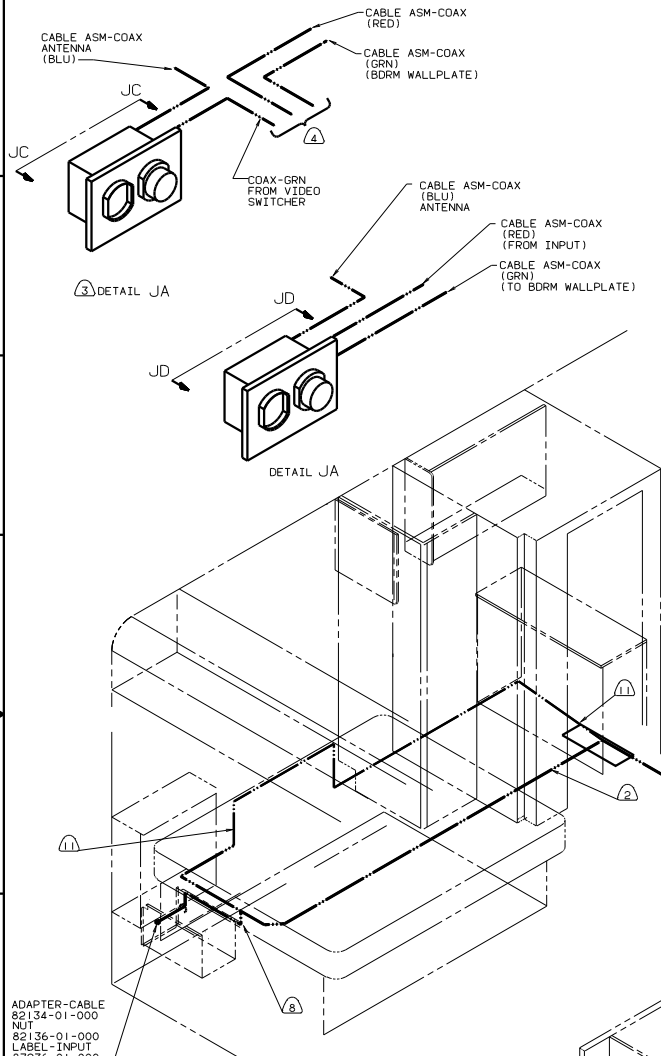
VIEW HC-HC



FOR ELECTRICAL TORQUE SPECIFICATIONS SEE DWG NO. 128783-01-000

FOR ELECTRICAL CALLOUTS SEE DWG NO. 121339-01-000

99 331C
12V RIGHT SIDE
265 CODE STANDARDS-CSA
181 CODE STANDARDS-CSA



49X, BED-QUEEN CENTERED
45G BED-TWINS

NOTES:

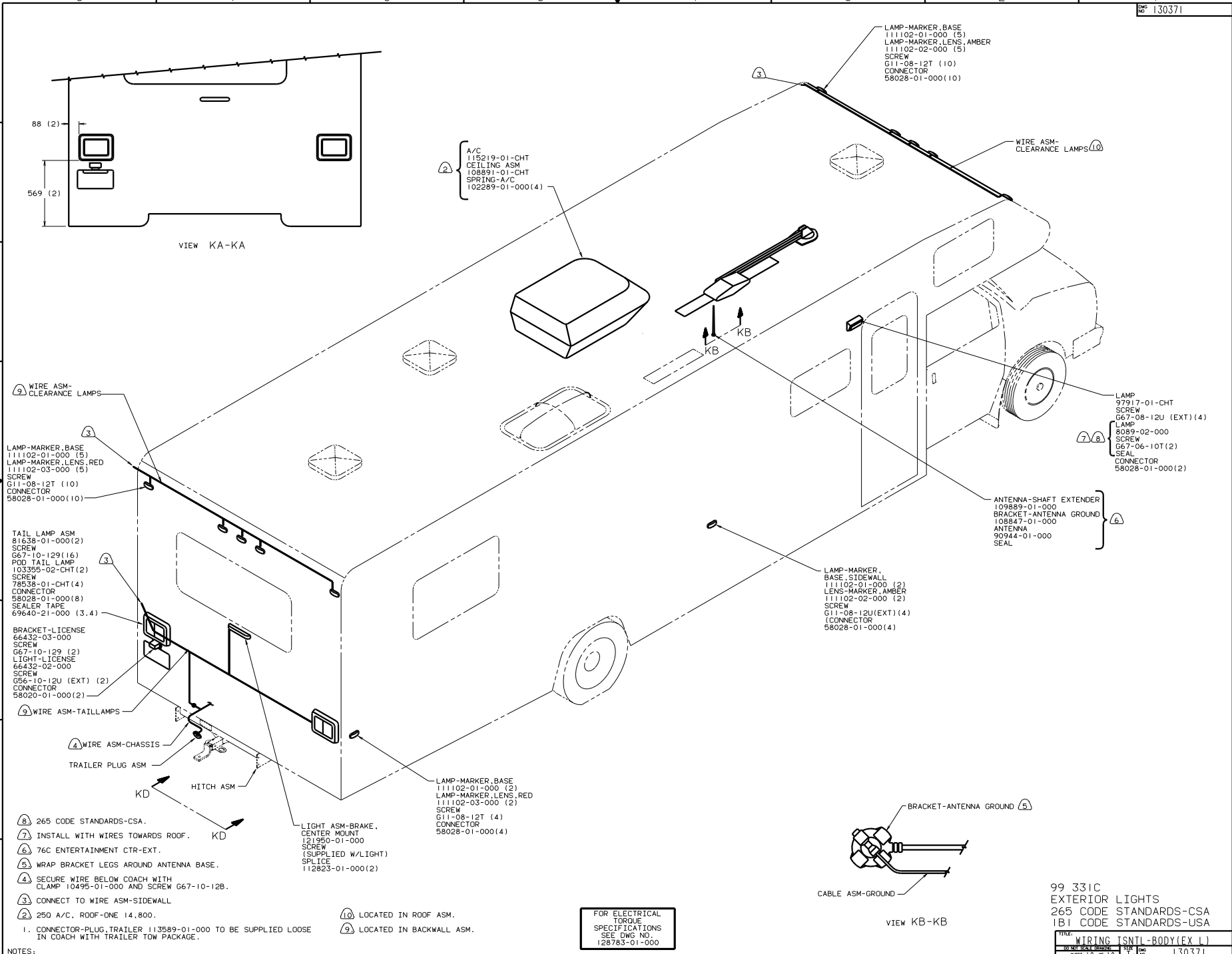
- 45G BED-TWIN ONLY.
- WITH SIDE TV ENTERTAINMENT CENTER, COIL EXCESS COAX INTO INDIVIDUAL BUNDLES WITH 8343-01-000. SECURE BUNDLES BEHIND CLOSEOUT PANEL.
- 49X BED-QUEEN, CNTR, BKWL.
- CABLE IS ROUTED UNDER FLOOR, EXTERIOR TO COMPARTMENT.
- ADD RUBBER BUMPER TO ROOF UNDER EACH END OF ANTENNA IN DOWN POSITION WHICH MAY COME INTO CONTACT WITH ROOF.
- SEE DRAWING 76319-01-000 FOR INSTALLATION OF TV ANTENNA.
- LOCATE TO RETAIN CABLE BUT NOT TO RESTRICT ANTENNA TRAVEL.
- SEE WIRING INSTL-TV/VCR SIDE FOR ADDITIONAL INFORMATION.
- USE WITH 42" TV-19" FRT & SW-SYS OR 210 TV-19" W/VCR/SW SYS.
- WIRE ROUTED THRU FLOOR.
- 76C ENTERTAINMENT CTR-EXT.

49X, BED-QUEEN, CENTERED
45G BED-TWINS RIGHT SIDE

FOR ELECTRICAL TORQUE SPECIFICATIONS SEE DWG NO. 128783-01-000

99 331C
COAXIAL CABLE
265 CODE STANDARDS-CSA
1B1 CODE STANDARDS-USA

TITLE	DATE	BY	CHK	APP
WIRING INSTL-BODY(COAX)				
NO. OF SHEETS	TOTAL SHEETS	130371		
SHEET 9 OF 10	16			



88 (2)
569 (2)

VIEW KA-KA

2
A/C
115219-01-CHT
CEILING ASM
108891-01-CHT
SPRING-A/C
102289-01-000(4)

3
LAMP-MARKER, BASE
111102-01-000 (5)
LAMP-MARKER, LENS, AMBER
111102-02-000 (5)
SCREW
G11-08-12T (10)
CONNECTOR
58028-01-000(10)

10
WIRE ASM-
CLEARANCE LAMPS

9
WIRE ASM-
CLEARANCE LAMPS

3
LAMP-MARKER, BASE
111102-01-000 (5)
LAMP-MARKER, LENS, RED
111102-03-000 (5)
SCREW
G11-08-12T (10)
CONNECTOR
58028-01-000(10)

D
TAIL LAMP ASM
81638-01-000(2)
SCREW
G67-10-129(16)
POD TAIL LAMP
103355-02-CHT(2)
SCREW
78538-01-CHT(4)
CONNECTOR
58028-01-000(8)
SEALER TAPE
69640-21-000 (3,4)

C
BRACKET-LICENSE
66432-03-000
SCREW
G67-10-129 (2)
LIGHT-LICENSE
66432-02-000
SCREW
G56-10-12U (EXT) (2)
CONNECTOR
58020-01-000(2)

9
WIRE ASM-TAILLAMPS

4
WIRE ASM-CHASSIS

TRAILER PLUG ASM

KD HITCH ASM

8
265 CODE STANDARDS-CSA.

7
INSTALL WITH WIRES TOWARDS ROOF.

6
76C ENTERTAINMENT CTR-EXT.

5
WRAP BRACKET LEGS AROUND ANTENNA BASE.

4
SECURE WIRE BELOW COACH WITH
CLAMP 10496-01-000 AND SCREW G67-10-12B.

3
CONNECT TO WIRE ASM-SIDEWALL

2
250 A/C, ROOF-ONE 14,800.

NOTES:

1. CONNECTOR-PLUG,TRAILER 113589-01-000 TO BE SUPPLIED LOOSE
IN COACH WITH TRAILER TOW PACKAGE.

10
LIGHT ASM-BRAKE,
CENTER MOUNT
121950-01-000
SCREW
(SUPPLIED W/LIGHT)
SPLICE
112823-01-000(2)

LAMP-MARKER, BASE
111102-01-000 (2)
LAMP-MARKER, LENS, RED
111102-03-000 (2)
SCREW
G11-08-12T (4)
CONNECTOR
58028-01-000(4)

LAMP-MARKER,
BASE, SIDEWALL
111102-01-000 (2)
LENS-MARKER, AMBER
111102-02-000 (2)
SCREW
G11-08-12U(EXT) (4)
(CONNECTOR
58028-01-000(4)

7
8
LAMP
97917-01-CHT
SCREW
G67-08-12U (EXT) (4)
LAMP
8089-02-000
SCREW
G67-06-10T(2)
SEAL
CONNECTOR
58028-01-000(2)

6
ANTENNA-SHAFT EXTENDER
109889-01-000
BRACKET-ANTENNA GROUND
108847-01-000
ANTENNA
90944-01-000
SEAL

5
BRACKET-ANTENNA GROUND

CABLE ASM-GROUND

VIEW KB-KB

10
LOCATED IN ROOF ASM.

9
LOCATED IN BACKWALL ASM.

FOR ELECTRICAL
TORQUE
SPECIFICATIONS
SEE DWG NO.
128783-01-000

99 331C
EXTERIOR LIGHTS
265 CODE STANDARDS-CSA
1B1 CODE STANDARDS-USA

TITLE: WIRING (SNTL-BODY(EX L))
DRAWN: []
CHECKED: []
DATE: []
SHEET 10 OF 10 I.E. NO. 130371