



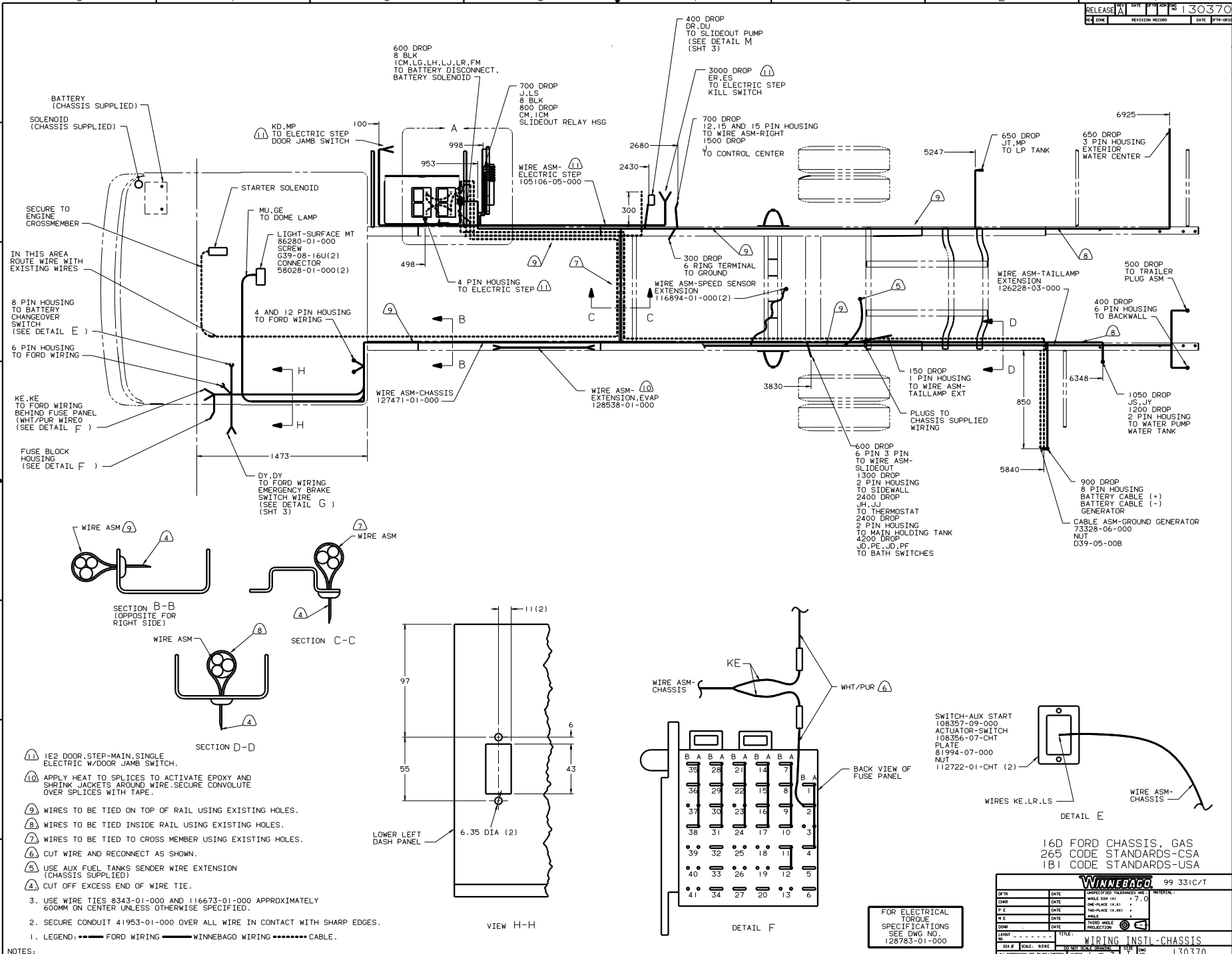
**DANGER**

**Danger of electrical shock, burns or death.** Always remove all power sources before attempting any repair, service or diagnostic work. Power can be present from shore power, generator, inverter or battery. All power sources must be disabled and secured before performing any service.



**CAUTION**

If you lack the skills, tools or equipment to perform diagnostic or repair work leave such work to an authorized Winnebago Industries dealer or other qualified shop.



1. LEGEND: ●●● FORD WIRING — WINNEBAGO WIRING ..... CABLE.
2. SECURE CONDUIT 41953-01-000 OVER ALL WIRE IN CONTACT WITH SHARP EDGES.
3. USE WIRE TIES 8343-01-000 AND 116673-01-000 APPROXIMATELY 600MM ON CENTER UNLESS OTHERWISE SPECIFIED.
4. CUT OFF EXCESS END OF WIRE TIE.
5. USE AUX FUEL TANKS SENDER WIRE EXTENSION (CHASSIS SUPPLIED).
6. CUT WIRE AND RECONNECT AS SHOWN.
7. WIRES TO BE TIED TO CROSS MEMBER USING EXISTING HOLES.
8. WIRES TO BE TIED INSIDE RAIL USING EXISTING HOLES.
9. WIRES TO BE TIED ON TOP OF RAIL USING EXISTING HOLES.
10. APPLY HEAT TO SPLICES TO ACTIVATE EPOXY AND SHRINK JACKETS AROUND WIRE. SECURE CONVOLUTE OVER SPLICES WITH TAPE.
11. 1E2 DOOR, STEP-MAIN, SINGLE ELECTRIC W/DOOR JAMB SWITCH.

FOR ELECTRICAL TORQUE SPECIFICATIONS SEE DWG NO. 128783-01-000

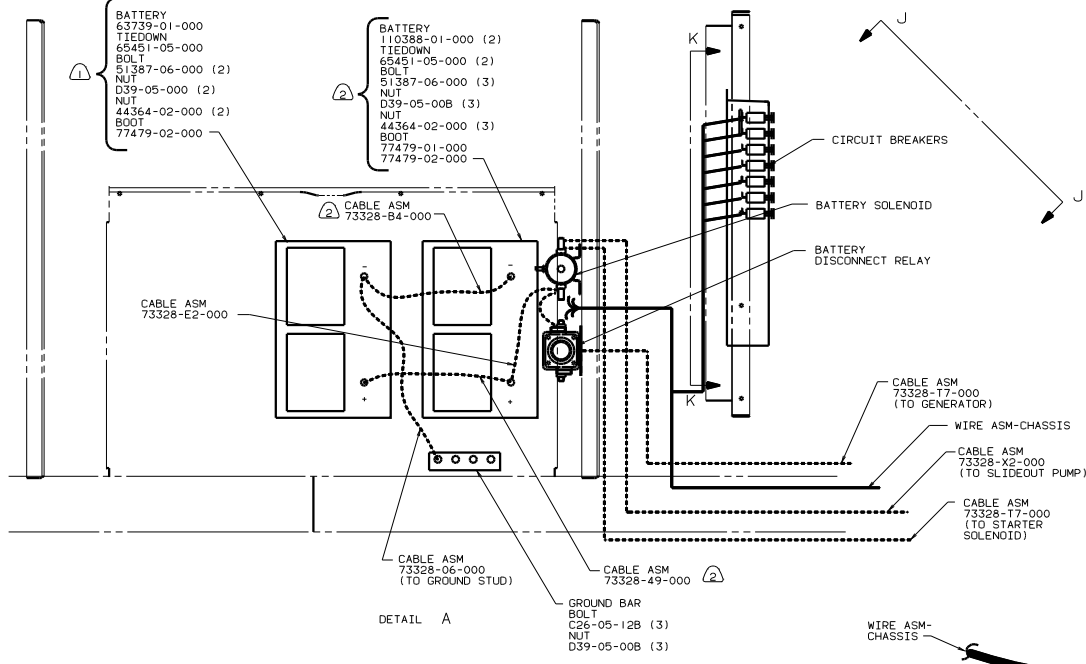
REV	DATE	DESCRIPTION	BY	CHKD
1				
2				
3				
4				
5				
6				
7				
8				
9				
10				
11				
12				
13				
14				
15				
16				
17				
18				
19				
20				
21				
22				
23				
24				
25				
26				
27				
28				
29				
30				
31				
32				
33				
34				
35				
36				
37				
38				
39				
40				
41				

WINNEBAGO 99 331C/T

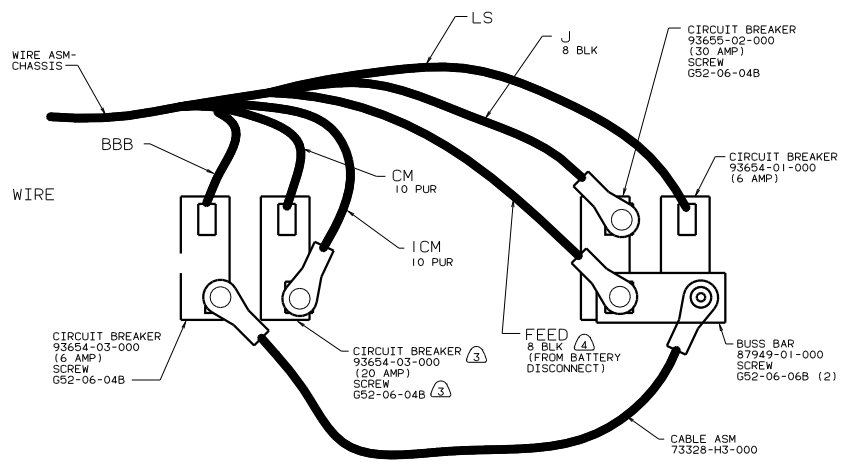
16D FORD CHASSIS, GAS 265 CODE STANDARDS-CSA 1B1 CODE STANDARDS-USA

WIRING INSTL-CHASSIS

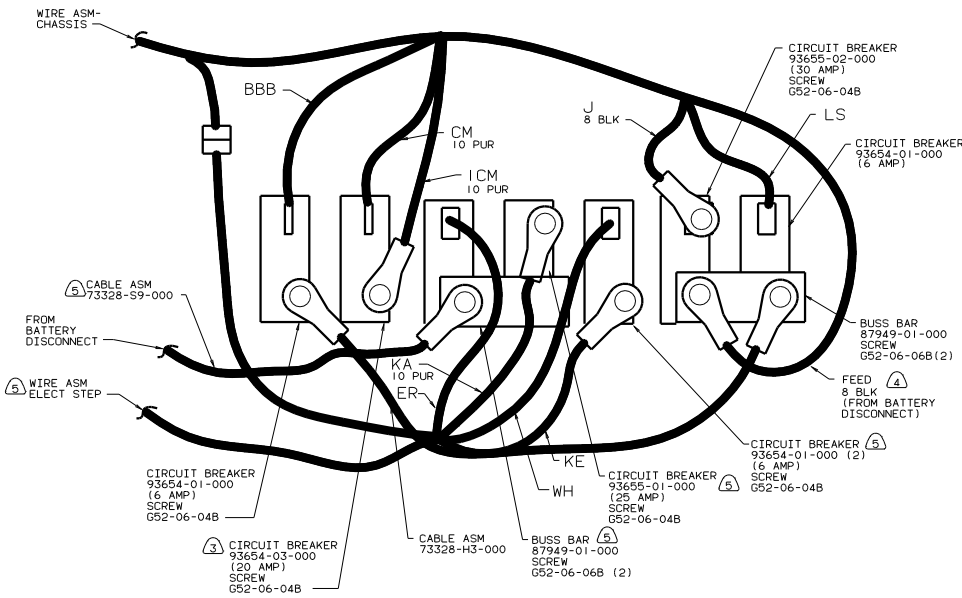
130370



DETAIL A



VIEW K-K ⑥



VIEW CB-CB ⑤

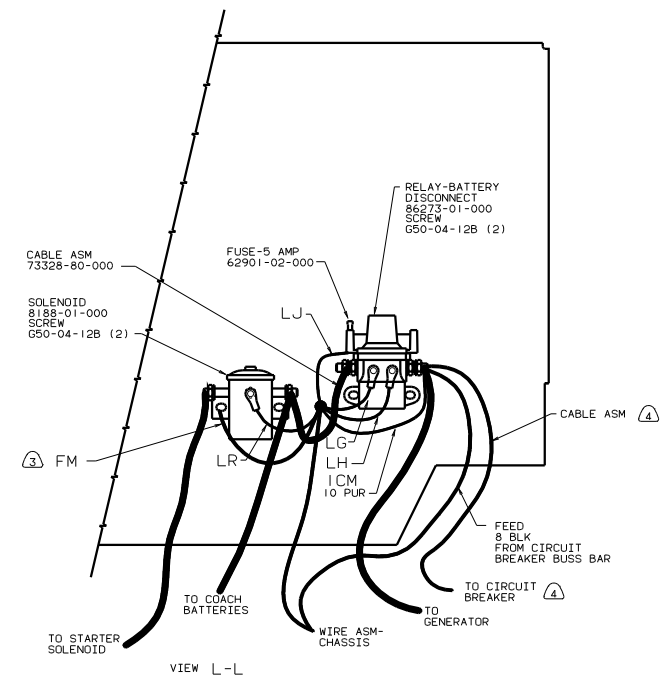
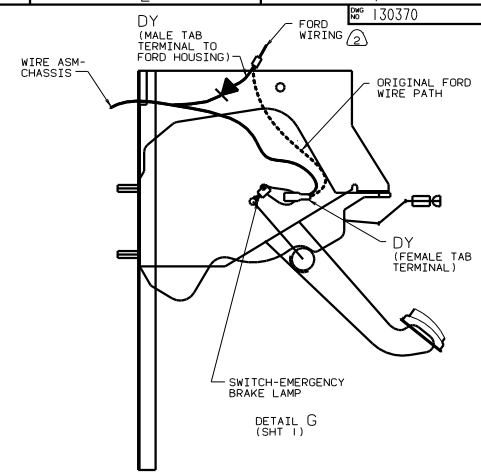
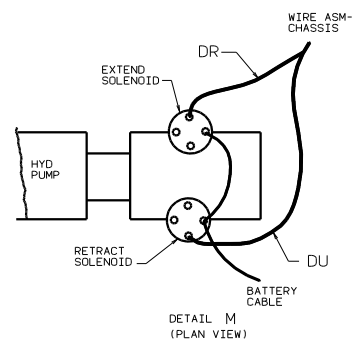
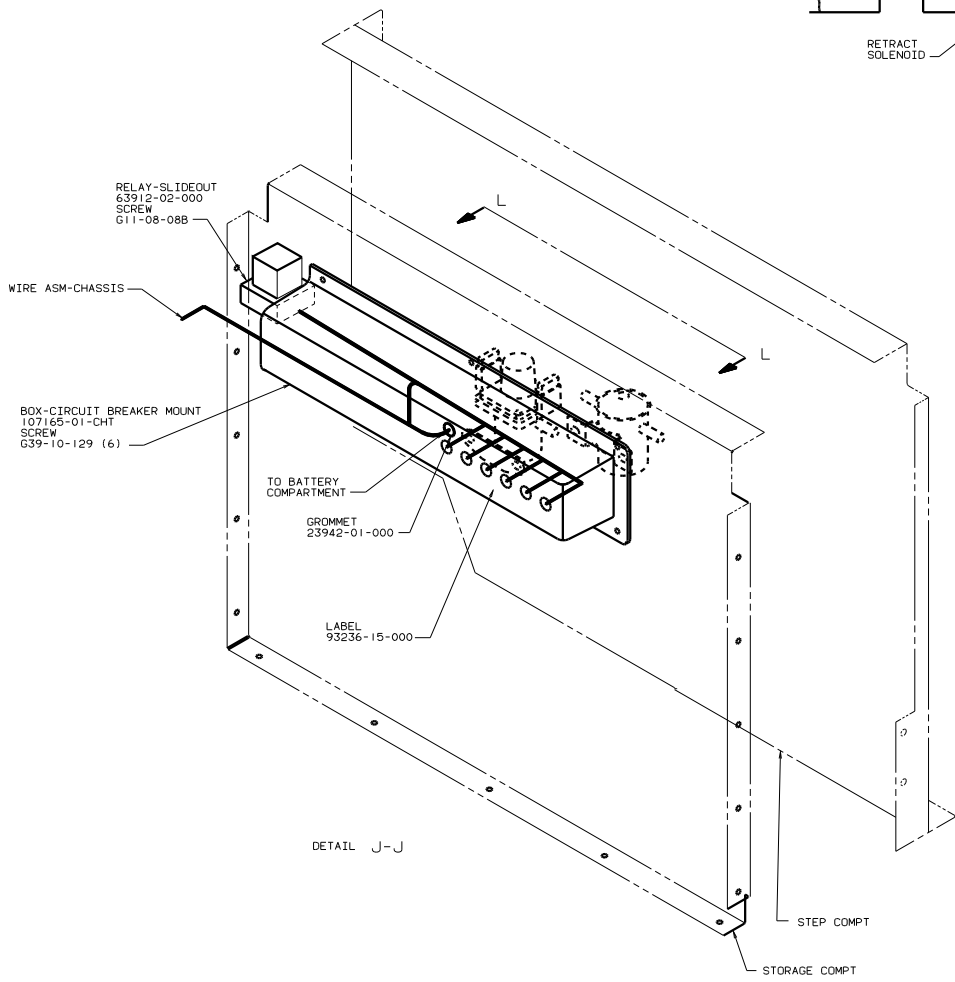
- ⑥ 1E1 DOOR\_STEP-MAIN.SINGLE MANUAL PULL-OUT.
- ⑤ 1E2 DOOR\_STEP-MAIN.SINGLE ELECTRIC W/DOOR JAMB SWITCH.
- ④ MARKED WITH RED TAPE.
- ③ 40F INVERTER-DC./AC. 130W.
- ② 22W BATTERY-TWO.
- ① 12X BATTERY-ONE.

NOTES:

FOR ELECTRICAL TORQUE SPECIFICATIONS SEE DWG NO. 128783-01-000

99 331C/T  
 12D FORD CHASSIS, GAS  
 265 CODE STANDARDS-CSA  
 IBI CODE STANDARDS-USA

TITLE	WIRING INSTL-CHASSIS
NO. OF SHEETS	2 OF 3
SHEET NO.	2
DWG NO.	130370



- NOTES:
- ④ IE2 DOOR, STEP-MAIN, SINGLE ELECTRIC W/DOOR JAMB SWITCH.
  - ③ SECURE WITH SOLENOID MOUNTING BOLT.
  - ② DISCONNECT THE FORD WIRING FROM THE PARK BRAKE INDICATOR SWITCH. RECONNECT CIRCUIT DY AS SHOWN.
  - ① LOCATE BOX VERTICALLY BY CENTERING ON HOLE IN COMPT.

FOR ELECTRICAL TORQUE SPECIFICATIONS SEE DWG NO. 128783-01-000

99 331C/T  
16D FORD CHASSIS, GAS  
265 CODE STANDARDS-CSA  
1B1 CODE STANDARDS-USA

TITLE	WIRING INSTL-CHASSIS
NO. OF SHEETS	3 OF 3
DWG NO.	130370