



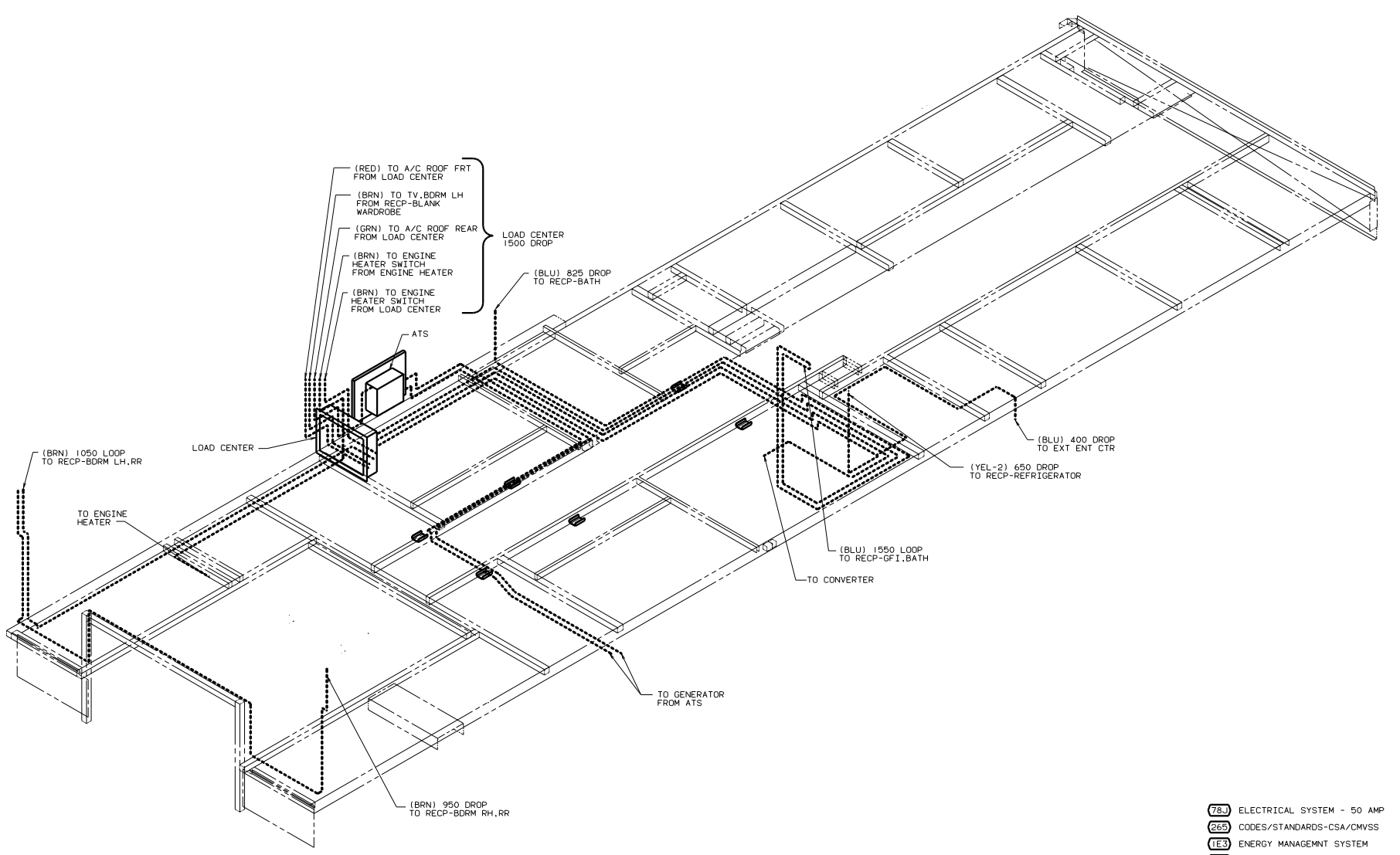
**DANGER**

**Danger of electrical shock, burns or death.** Always remove all power sources before attempting any repair, service or diagnostic work. Power can be present from shore power, generator, inverter or battery. All power sources must be disabled and secured before performing any service.



**CAUTION**

If you lack the skills, tools or equipment to perform diagnostic or repair work leave such work to an authorized Winnebago Industries dealer or other qualified shop.



3. WIRES THAT REST ON WIRE TRAYS ARE TO BE TIED DOWN WITH WIRE TIE 8343-02-000.
2. CLAMP TO FLOOR SUPPORT TUBES AS NECESSARY WITH CLAMP 10497-01-000.
1. ALL WIRES TO BE CLAMPED WITH CLAMP 10495-01-000 OR CLIP 80734-02-000 EVERY 700. USE SCREW G67-10-12B UNLESS OTHERWISE SPECIFIED.

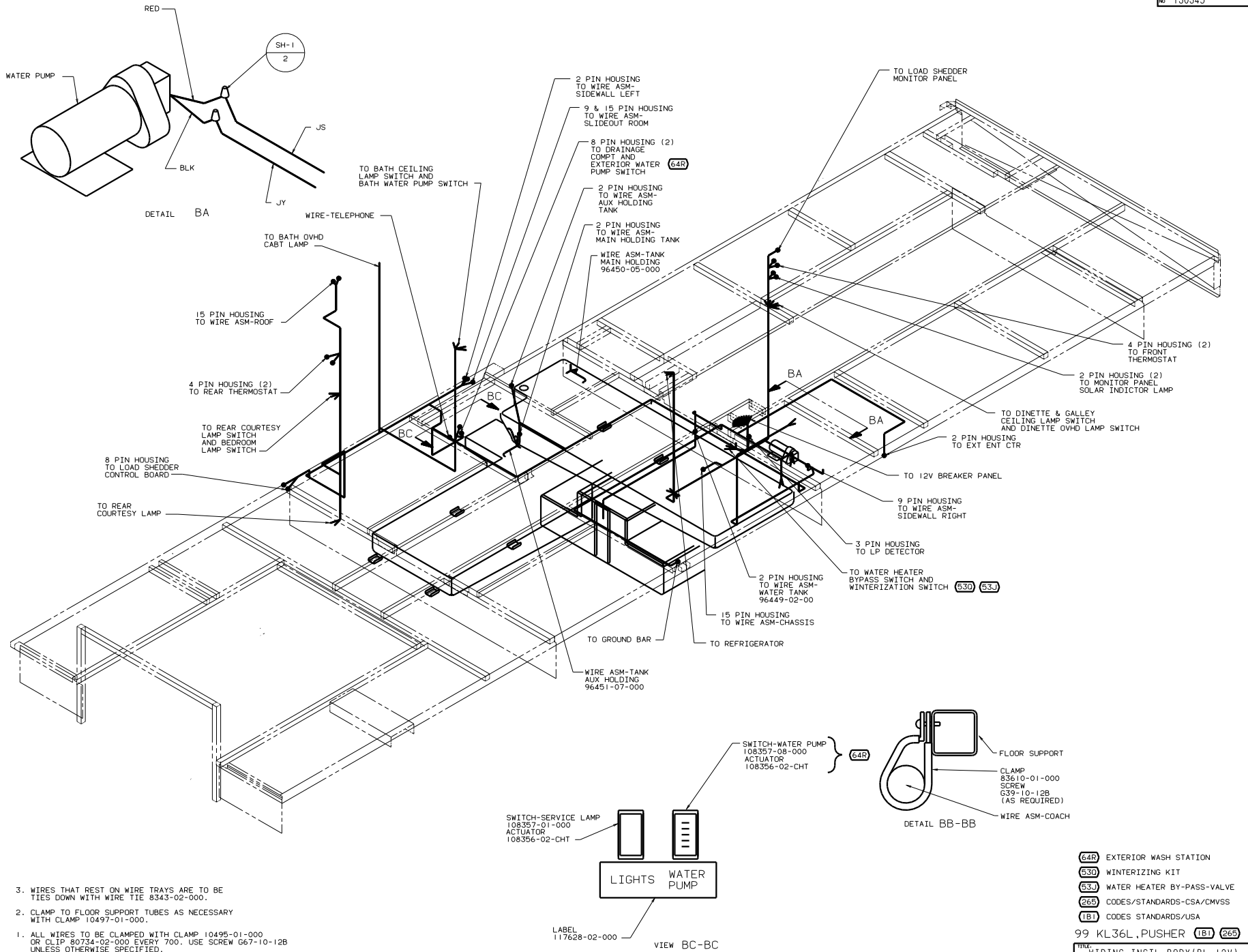
NOTES:

- (78J) ELECTRICAL SYSTEM - 50 AMP
- (265) CODES/STANDARDS-CSA/CMVSS
- (1E3) ENERGY MANAGMNT SYSTEM
- (1B1) CODES STANDARDS/USA
- (120) ELECTRICAL SYSTEM 30 AMP
- (1B1) (265) (1E3) (120) (78J)

**WINNEBAGO** 99 KL36L, PUSHER

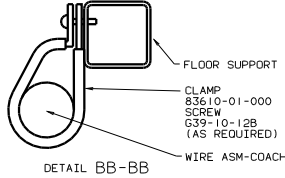
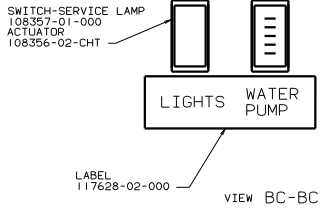
DATE	DESCRIPTION	BY	CHKD

TITLE: **WIRING INSTL - BODY (BL 110V)**  
 SHEET 1 OF 23  
 REF: 126997 130345



3. WIRES THAT REST ON WIRE TRAYS ARE TO BE TIES DOWN WITH WIRE TIE 8343-02-000.
2. CLAMP TO FLOOR SUPPORT TUBES AS NECESSARY WITH CLAMP 10497-01-000.
1. ALL WIRES TO BE CLAMPED WITH CLAMP 10495-01-000 OR CLIP 80734-02-000 EVERY 700. USE SCREW G67-10-12B UNLESS OTHERWISE SPECIFIED.

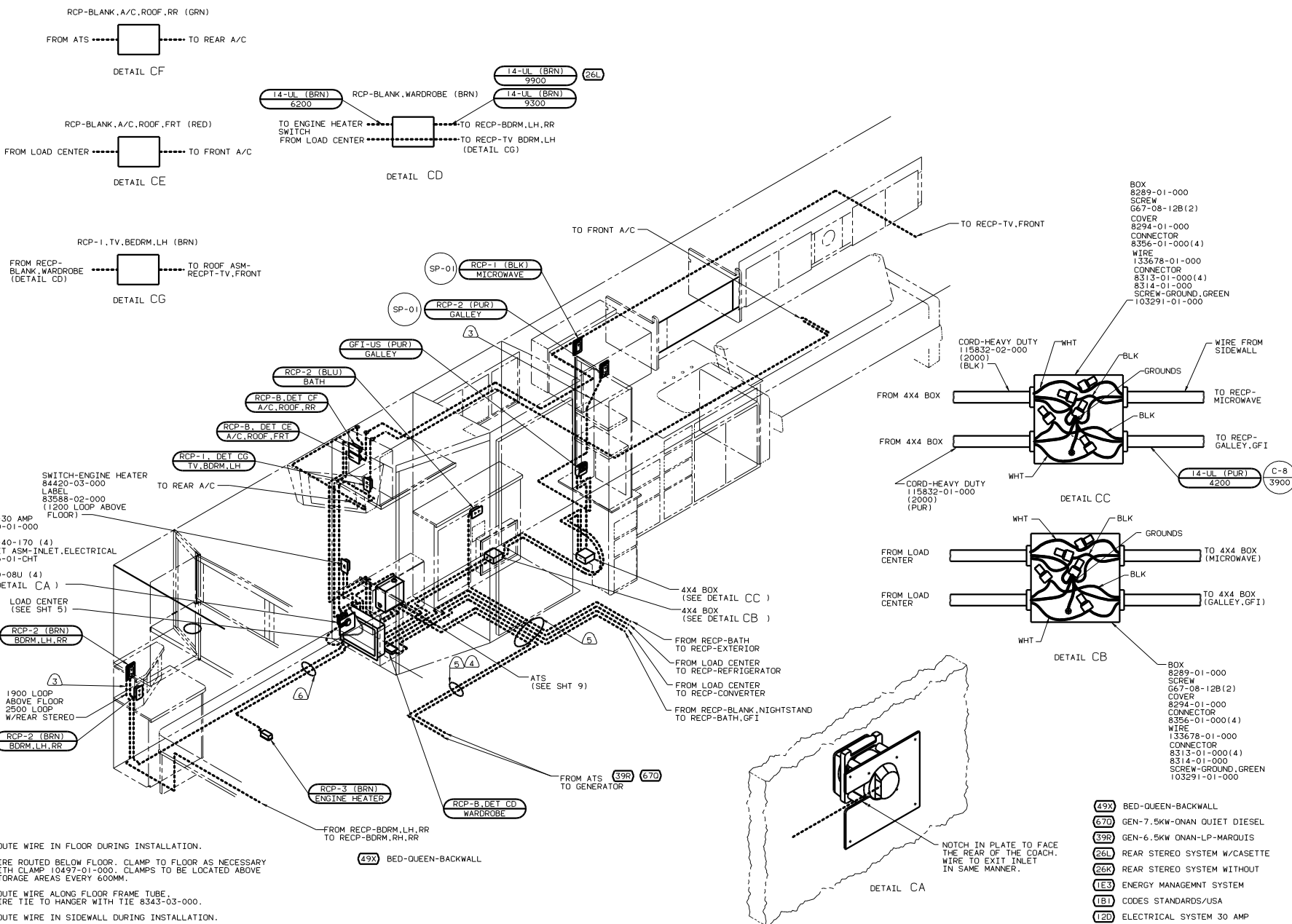
NOTES:



- 64R EXTERIOR WASH STATION
- 630 WINTERIZING KIT
- 63J WATER HEATER BY-PASS-VALVE
- 265 CODES/STANDARDS-CSA/CMVSS
- 1B1 CODES STANDARDS/USA
- 1B2

99 KL36L,PUSHER 1B1 265

FILE	WIRING INSTL-BODY (BL 12V)
NO. OF SHEETS	16
SHEET	2 OF 23
DATE	11/80
130345	



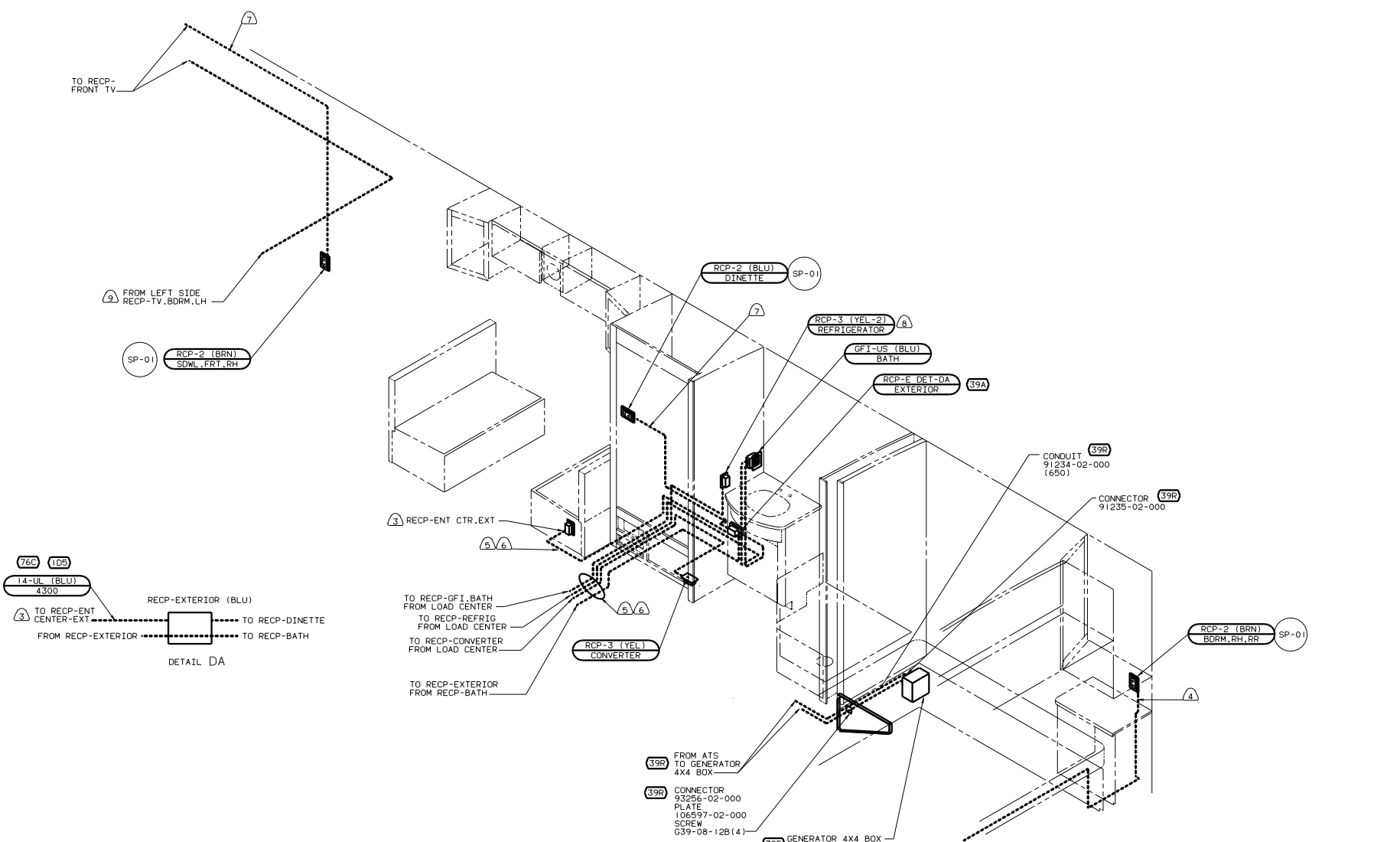
- NOTES:
- ALL WIRE TO BE CLAMPED WITH CLAMP 10495-01-000 OR CLIP 80734-02-000 EVERY 700, USE SCREW G67-10-12B UNLESS OTHERWISE SPECIFIED.
  - ALL WIRES ARE TO BE CLAMPED WITH CLAMP 10497-05-000 WITHIN 200 OF OUTLET BOXES AND SPLICES. USE SCREW G67-10-12B.
  - ROUTE WIRE IN SIDEWALL DURING INSTALLATION.
  - ROUTE WIRE ALONG FLOOR FRAME TUBE. WIRE TIE TO HANGER WITH TIE 8343-03-000.
  - WIRE ROUTED BELOW FLOOR. CLAMP TO FLOOR AS NECESSARY WITH CLAMP 10497-01-000. CLAMPS TO BE LOCATED ABOVE STORAGE AREAS EVERY 600MM.
  - ROUTE WIRE IN FLOOR DURING INSTALLATION.

FOR ELECTRICAL TORQUE SPECIFICATIONS SEE OMD NO. 128783-01-000

- 49X) BED-QUEEN-BACKWALL
- 67D) GEN-7.5KW-ONAN QUIET DIESEL
- 39R) GEN-6.5KW ONAN-LP-MARQUIS
- 26L) REAR STEREO SYSTEM W/CASSETTE
- 26K) REAR STEREO SYSTEM WITHOUT
- 1E3) ENERGY MANEGMNT SYSTEM
- 1B1) CODES STANDARDS/USA
- 12D) ELECTRICAL SYSTEM 30 AMP

99 KL36L, PUSHER (1B1) (12D) (1E3)

FILE NO.	130345
DATE	11/01/00
SHEET	3 OF 23
REV	1
DATE	11/01/00
BY	130345



- ⑨ WIRE IN ROOF.
  - ⑧ LOCATE TOP OF REFRIGERATOR RECEPTACLE 300 ABOVE SHELF.
  - ⑦ WIRE IN SIDEWALL.
  - ⑥ WIRE ROUTED BELOW FLOOR. CLAMP TO FLOOR FRAME AS NECESSARY WITH CLAMP 10497-01-000 AND SCREW G39-10-12B.
  - ⑤ ROUTE WIRES BEFORE SETTING UPPER FLOOR ASM.
  - ④ ROUTE WIRE IN SIDEWALL DURING INSTALLATION.
  - ③ SEE ENTERTAINMENT CENTER COMPL. FOR ADDITIONAL INFORMATION.
2. ALL WIRES ARE TO BE CLAMPED WITH CLAMP 10497-05-000 WITHIN 200 OF OUTLET BOXES AND SPLICES. USE SCREW G67-10-12B.
1. ALL WIRE TO BE CLAMPED WITH CLAMP 10495-01-000 OR CLIP 80734-01-000 EVERY 600. USE SCREW G67-10-12B UNLESS OTHERWISE SPECIFIED.

- ④9X BED-QUEEN-BACKWALL
- ⑦6C ENTERTAINMENT CTR/EXT CSETTE
- ③9R GEN-6.5KW ONAN-LP-MARQUIS
- ③9A EXT RECEPTACLE DPLX 120VAC
- ①E3 ENERGY MANAGEMNT SYSTEM
- ①D5 ENTERTAINMENT CTR-EXT-W/CD
- ①B1 CODES STANDARDS/USA
- ①D0 ELECTRICAL SYSTEM 30 AMP
- ①B1 ①D0 ①E3

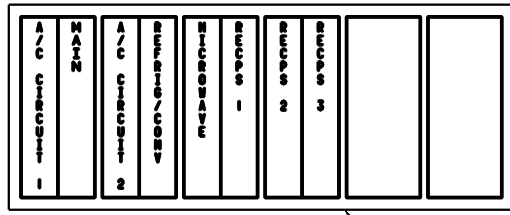
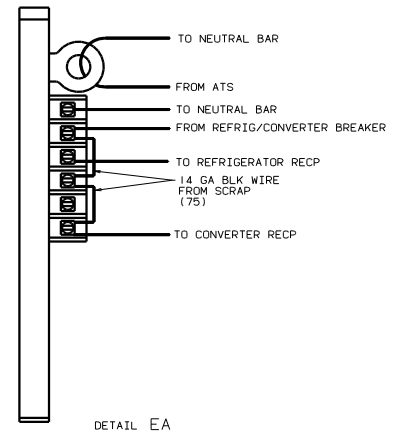
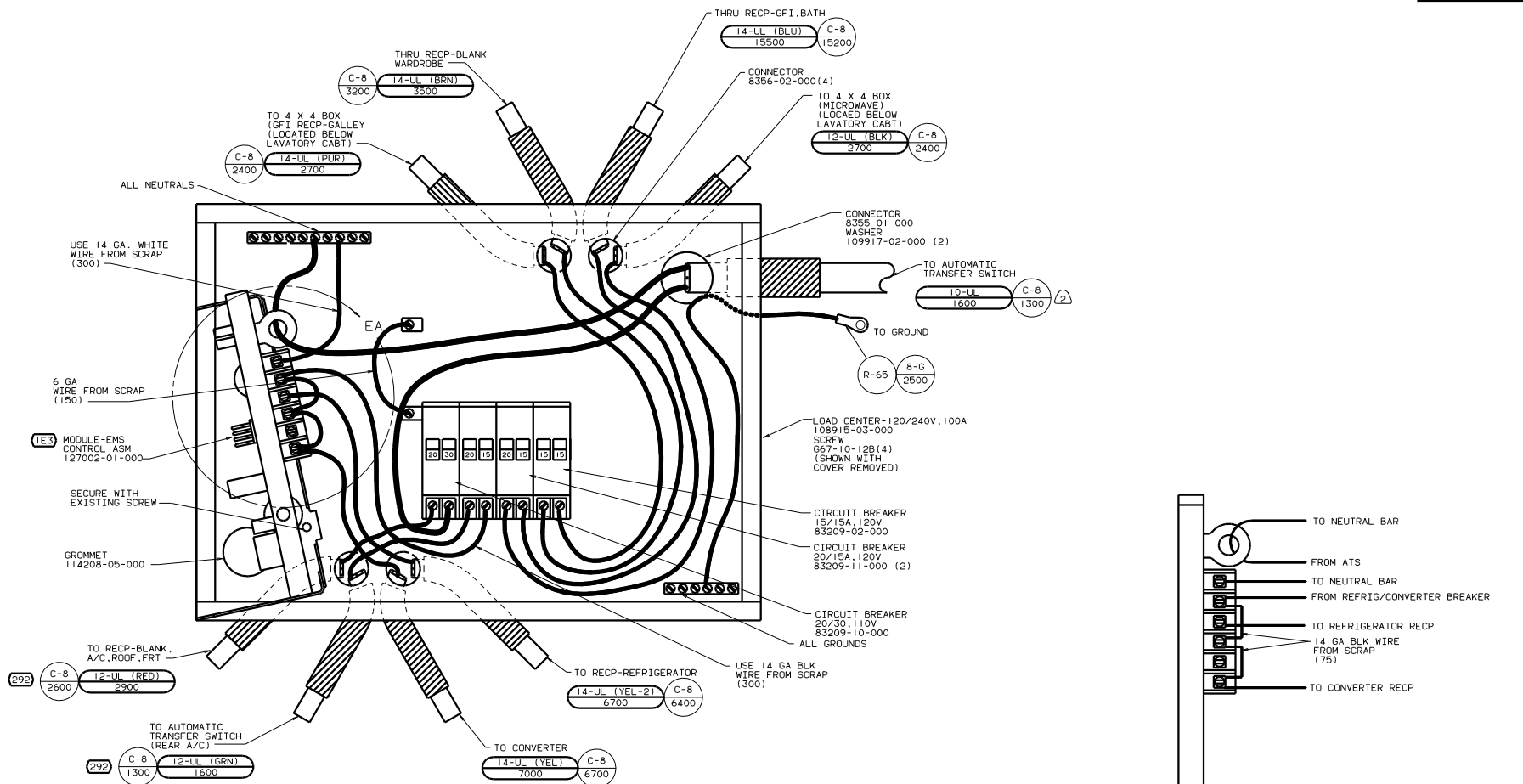
FOR ELECTRICAL TORQUE SPECIFICATIONS SEE DWG NO. 128783-01-000

FOR ELECTRICAL CALLOUTS SEE DWG NO. 121339-01-000

99 KL36L, PUSHER

WIRING INSTL-BODY (110R30US)

130345



INSTALL LABEL ON FRONT PANEL BELOW BREAKERS BETWEEN MOUNTING HOLES

- ATTACH WIRES TO BACKSIDE OF LOAD CENTER. USE EXISTING HOLES AND TIE-WIRE 116673-01-000.
- WIRE MUST BE 600 LONG INSIDE BOX. ALL OTHERS TO BE 300.
- ALL GROUND WIRES TO BE COVERED WITH TUBING 8041-02-000.

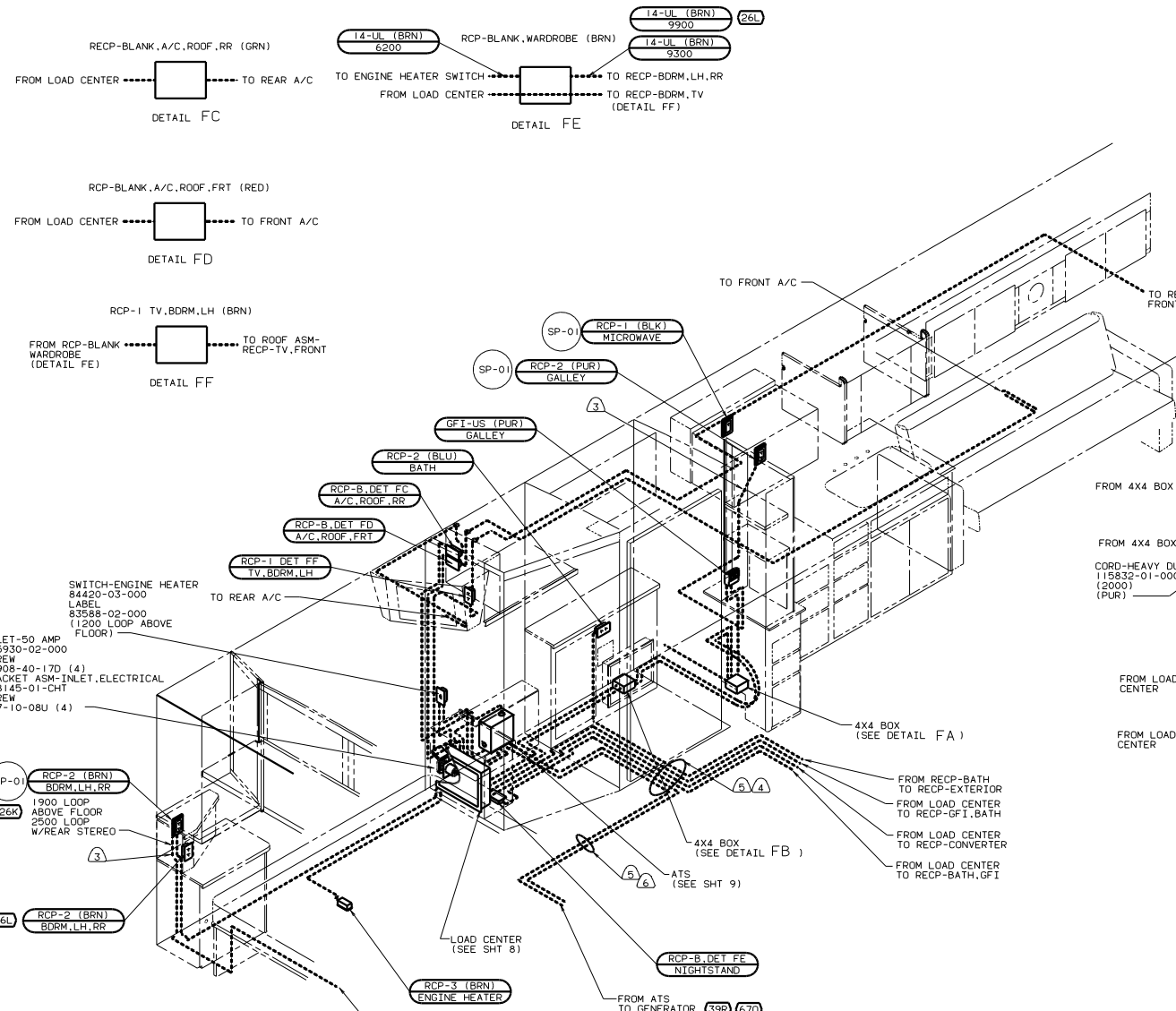
- (292) A/C ROOF-HIGH EFFICIENCY
- (1E3) ENERGY MANAGEMNT SYSTEM
- (1B1) CODES STANDARDS/USA
- (120) ELECTRICAL SYSTEM 30 AMP

FOR ELECTRICAL TORQUE SPECIFICATIONS SEE DWG NO. 128783-01-000

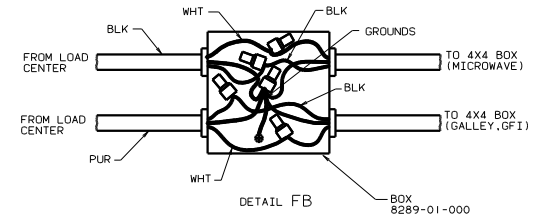
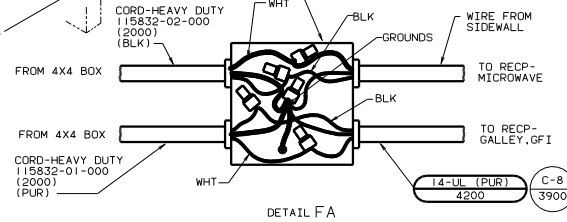
FOR ELECTRICAL CALLOUTS SEE DWG NO. 121339-01-000

99 KL36L, PUSHER (1B1) (120) (1E3)

WIRING INSTL-BODY (30 LC US)  
SHEET 5 OF 23



- BOX 8289-01-000
- SCREW G67-08-12B (2)
- COVER 8294-01-000
- CONNECTOR 8356-01-000 (4)
- WIRE 133678-01-000
- CONNECTOR 8313-01-000 (4)
- 8314-01-000
- SCREW-GROUND, GREEN 103291-01-000



- BOX 8289-01-000
- SCREW G67-08-12B(2)
- COVER 8294-01-000
- CONNECTOR 8356-01-000(4)
- WIRE 133678-01-000
- CONNECTOR 8313-01-000(4)
- 8314-01-000
- SCREW-GROUND, GREEN 103291-01-000

- ③ ROUTED WIRE ALONG FLOOR FRAME TUBES. WIRE TIE TO HANGER WITH TIE 8343-03-000.
- ⑤ ROUTED WIRES BEFORE SETTING UPPER FLOOR ASM.
- ④ WIRE ROUTED BELOW FLOOR. CLAMP TO FLOOR AS NECESSARY WITH CLAMP 10497-01-000 AND SCREW G39-10-12B. CLAMPS TO BE LOCATED ABOVE STORAGE AREAS EVERY 600MM.
- ③ ROUTE WIRE INSIDE WALL DURING INSTALLATION.

- 2. ALL WIRES ARE TO BE CLAMPED WITH CLAMP 10497-05-000 WITHIN 200 OF OUTLET BOXES AND SPLICES. USE SCREW G67-10-12B.
- 1. ALL WIRE TO BE CLAMPED WITH CLAMP 10495-01-000 OR CLIP 80734-02-000 EVERY 700. USE SCREW G67-10-12B UNLESS OTHERWISE SPECIFIED.

NOTES:

④9X BED-QUEEN-BACKWALL

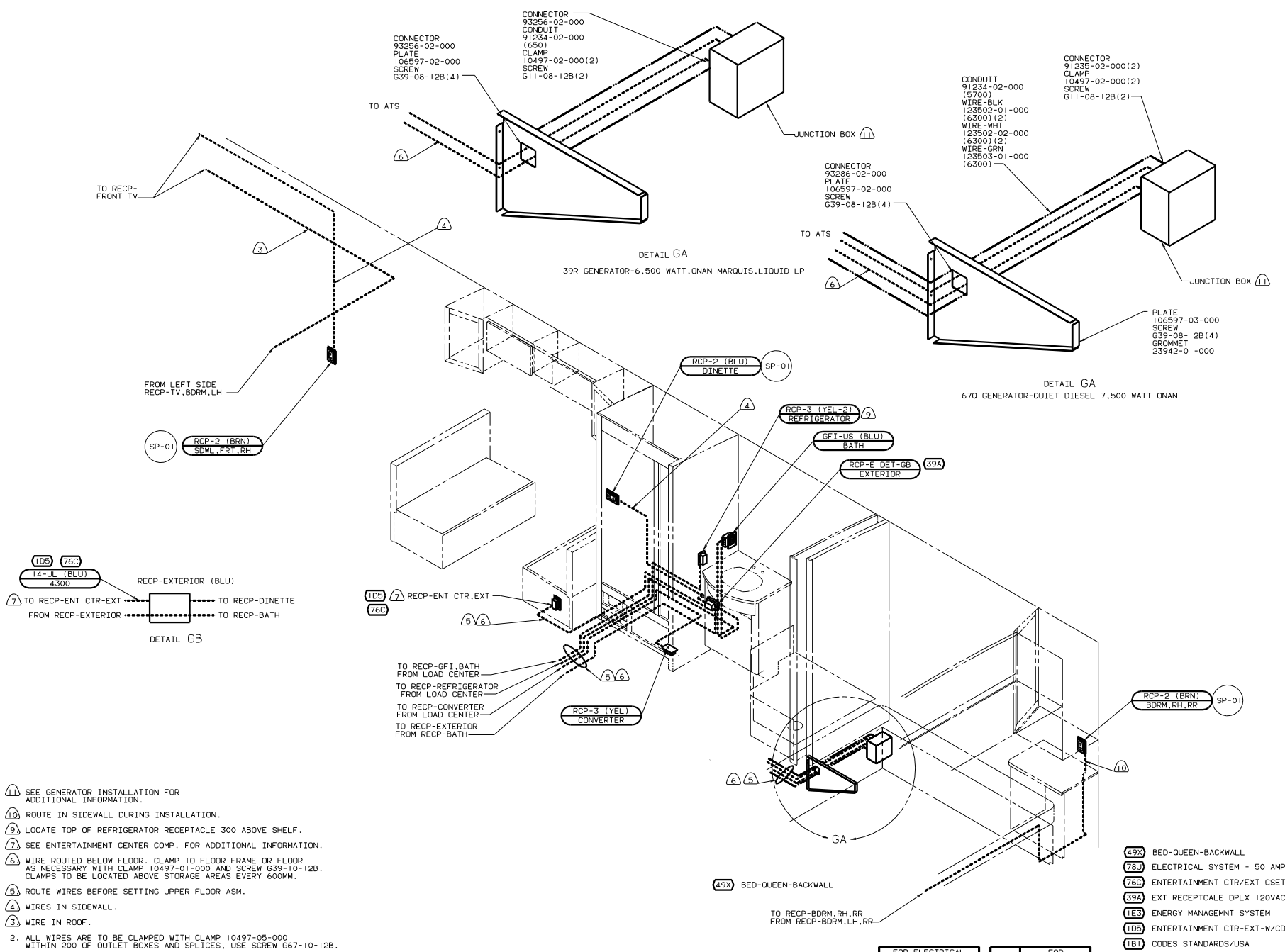
FOR ELECTRICAL TORQUE SPECIFICATIONS SEE DWG NO. 128783-01-000

FOR ELECTRICAL CALLOUTS SEE DWG NO. 121339-01-000

- ④9X BED-QUEEN-BACKWALL
- ⑦0 GEN-7.5KW-ONAN QUIET DIESEL
- ⑦8 ELECTRICAL SYSTEM - 50 AMP
- ③9R GEN-6.5KW ONAN-LP-MARQUIS
- ②6L REAR STEREO SYSTEM W/CASSETTE
- ②6K REAR STEREO SYSTEM WITHOUT
- ①E3 ENERGY MANAGMNT SYSTEM
- ①B1 CODES STANDARDS/USA

99 KL36L,PUSHER ①B1 ⑦8 ①E3

WIRING INSTL-BODY(110150US)  
 SHEET 6 OF 23



- (1) SEE GENERATOR INSTALLATION FOR ADDITIONAL INFORMATION.
- (10) ROUTE IN SIDEWALL DURING INSTALLATION.
- (9) LOCATE TOP OF REFRIGERATOR RECEPTACLE 300 ABOVE SHELF.
- (7) SEE ENTERTAINMENT CENTER COMP. FOR ADDITIONAL INFORMATION.
- (6) WIRE ROUTED BELOW FLOOR. CLAMP TO FLOOR FRAME OR FLOOR AS NECESSARY WITH CLAMP 10497-01-000 AND SCREW G39-10-12B. CLAMPS TO BE LOCATED ABOVE STORAGE AREAS EVERY 600MM.
- (5) ROUTE WIRES BEFORE SETTING UPPER FLOOR ASM.
- (4) WIRES IN SIDEWALL.
- (3) WIRE IN ROOF.

2. ALL WIRES ARE TO BE CLAMPED WITH CLAMP 10495-01-000 WITHIN 200 OF OUTLET BOXES AND SPLICES. USE SCREW G67-10-12B.

1. ALL WIRE TO BE CLAMPED WITH CLAMP 10495-01-000 OR CLIP 80734-01-000 EVERY 600. USE SCREW G67-10-12B UNLESS OTHERWISE SPECIFIED.

NOTES:

FOR ELECTRICAL TORQUE SPECIFICATIONS SEE DWG NO. 128783-01-000

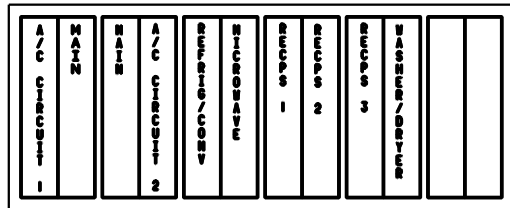
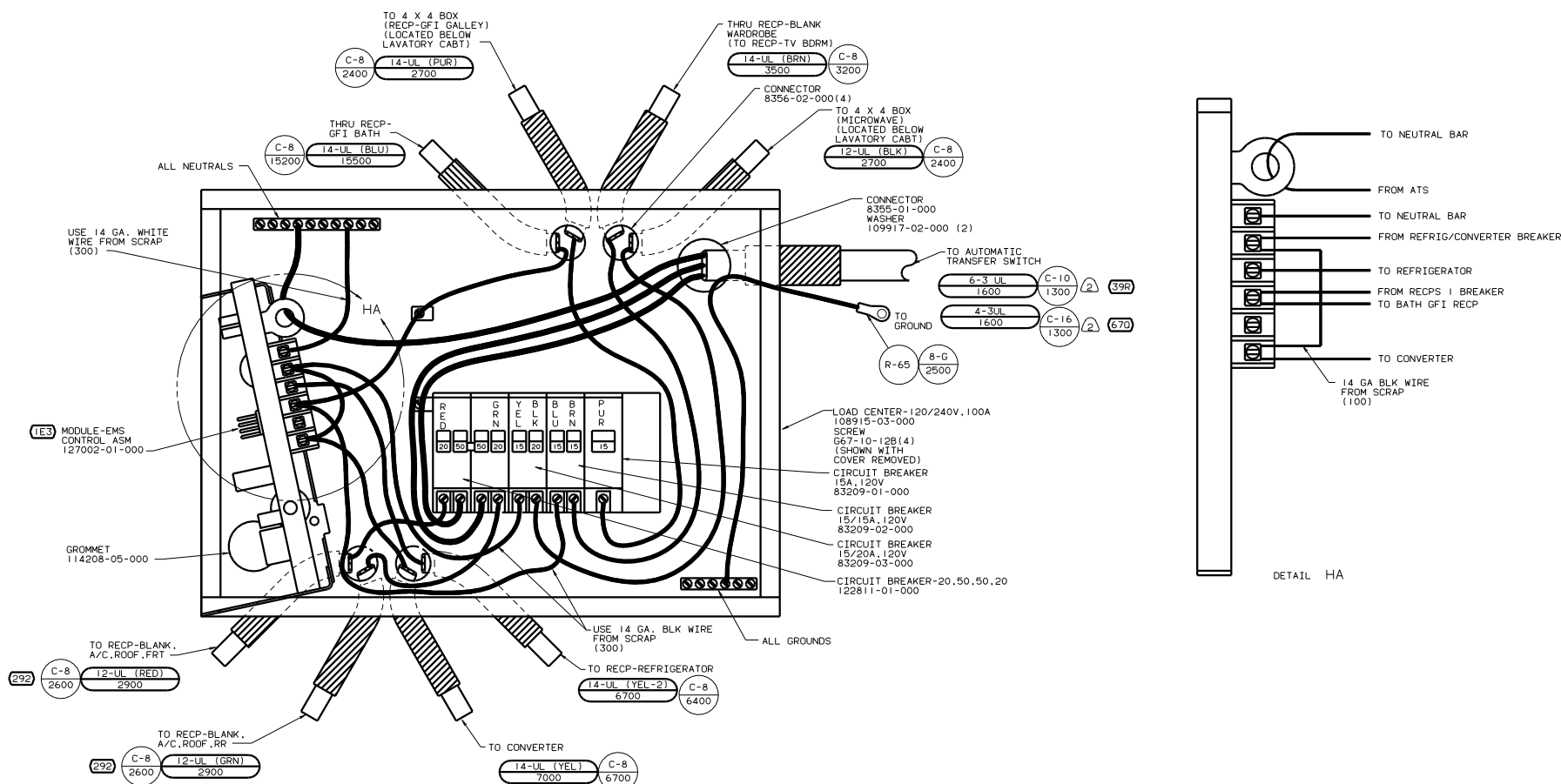
FOR ELECTRICAL CALLOUTS SEE DWG NO. 121339-01-000

- (49X) BED-QUEEN-BACKWALL
- (78J) ELECTRICAL SYSTEM - 50 AMP
- (76C) ENTERTAINMENT CTR/EXT CSETTE
- (39A) EXT RECEPTACLE DPLX 120VAC
- (1E3) ENERGY MANAGMNT SYSTEM
- (1D5) ENTERTAINMENT CTR-EXT-W/CD
- (1B1) CODES STANDARDS/USA

99 KL36L, PUSHER (1B) (78J) (1E3)

WIRING INSTL - BODY (110R50US)  
 SHEET 7 OF 23  
 130345





INSTALL LABEL ON FRONT PANEL BELOW BREAKERS BETWEEN MOUNTING HOLES

LABEL 95721-29-000

- 3. ATTACH WIRES TO BACKSIDE OF LOADCENTER. USE EXISTING HOLES AND TIE-WIRE 116673-01-000.
- ② WIRE MUST BE 600 LONG INSIDE BOX. ALL OTHERS TO BE 300.
- 1. ALL GROUND WIRES TO BE COVERED WITH TUBING 8041-02-000.

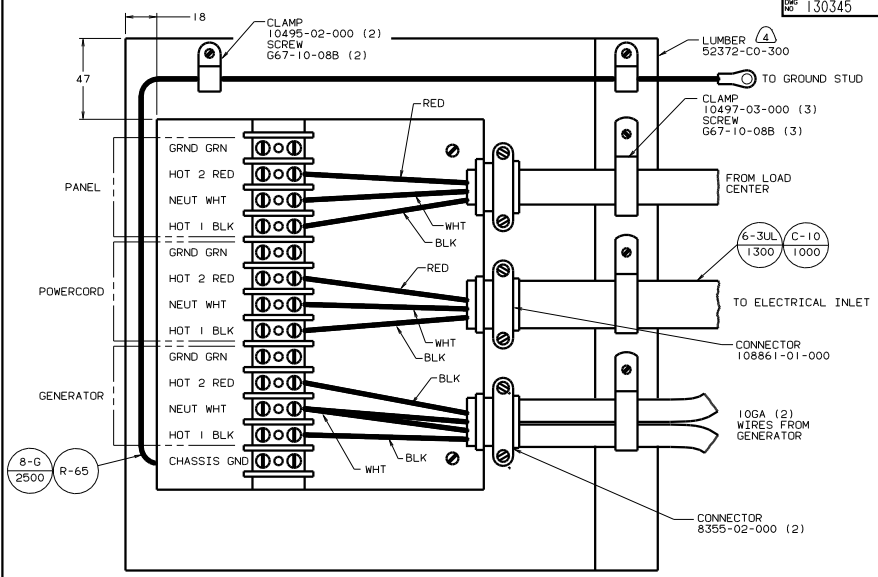
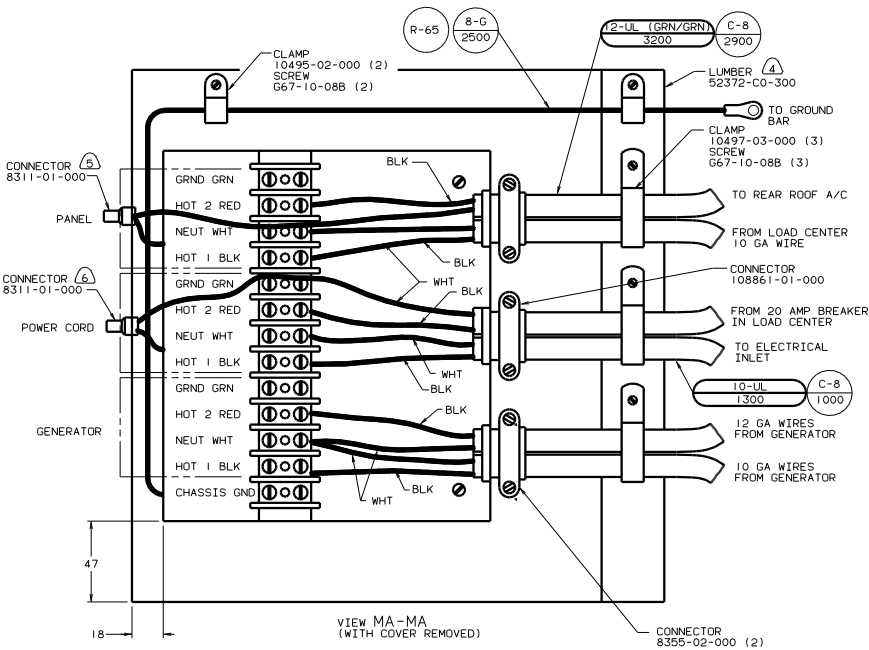
- ⑥70 GEN-7.5KW-ONAN-QUIET DIESEL
- ③9R GEN-6.5KW-ONAN-LP-MARQUIS
- ⑦8J ELECTRICAL SYSTEM - 50 AMP
- ②92 A/C ROOF-HIGH EFFICIENCY
- ①E3 ENERGY MANEGMNT SYSTEM
- ①B1 CODES STANDARDS/USA

FOR ELECTRICAL TORQUE SPECIFICATIONS SEE DWG NO. 128783-01-000

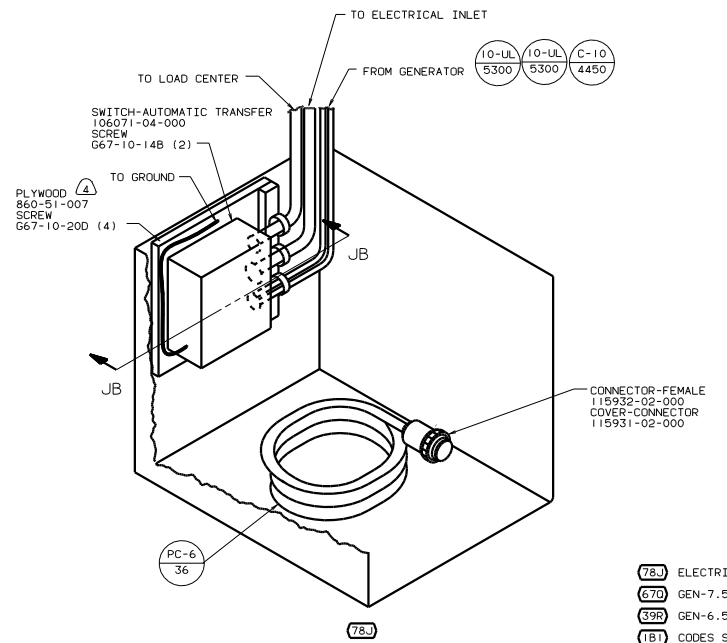
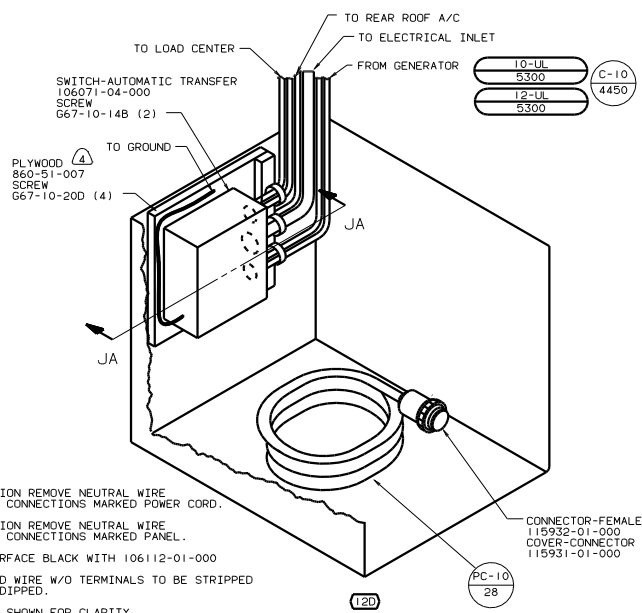
FOR ELECTRICAL CALLOUTS SEE DWG NO. 121339-01-000

99 KL36L, PUSHER ①B1 ⑦8J ①E3

WIRING INSTL-BODY(50 LC US)  
 SHEET 8 OF 23  
 130345



VIEW JB-JB (WITH COVER REMOVED) (SEE SHT 17 FOR QUIET DIESEL VIEW)



- Ⓐ FOR THIS CONNECTION REMOVE NEUTRAL WIRE MARKED BLUE FROM CONNECTIONS MARKED POWER CORD.
- Ⓑ FOR THIS CONNECTION REMOVE NEUTRAL WIRE MARKED BLUE FROM CONNECTIONS MARKED PANEL.
- Ⓓ PAINT EXPOSED SURFACE BLACK WITH 106112-01-000
- 3. ALL 110V STRANDED WIRE W/O TERMINALS TO BE STRIPPED 10MM AND SOLDER DIPPED.
- 2. GROUND WIRES NOT SHOWN FOR CLARITY.
- 1. ALL WIRES TO BE CLAMPED WITH IN 200 OF BOX.

FOR ELECTRICAL TORQUE SPECIFICATIONS SEE DWG NO. 128783-01-000

X-X

FOR ELECTRICAL CALLOUTS SEE DWG NO. 121339-01-000

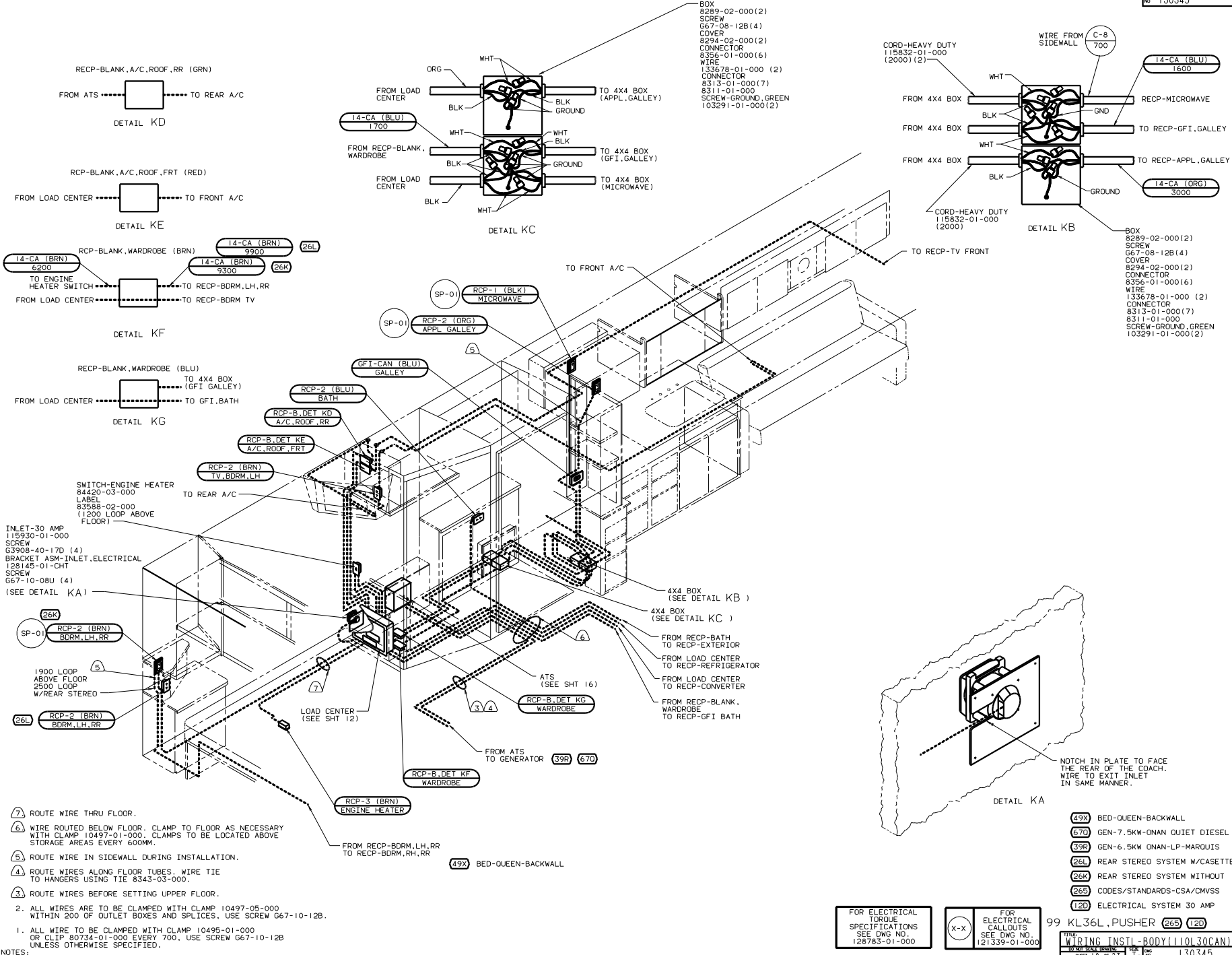
- 78.J ELECTRICAL SYSTEM - 50 AMP
- 670 GEN-7.5KW-ONAN QUIET DIESEL
- 39R GEN-6.5KW-ONAN-LP-MARQUIS
- 1B1 CODES STANDARDS/USA
- 12D ELECTRICAL SYSTEM 30 AMP

99 KL36L, PUSHER 1B1

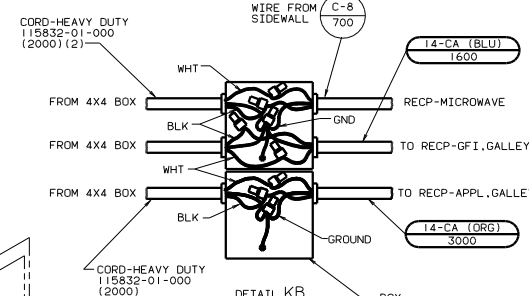
TITLE: WIRING INSTL-BODY(AIS)

NO. 10 THE SCALE GROUP THE DWG NO. 130345

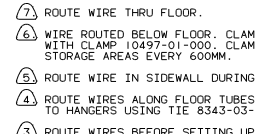
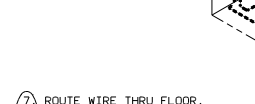
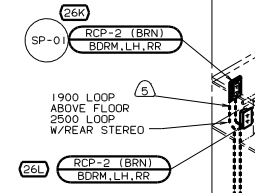
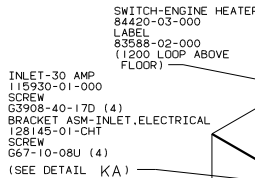
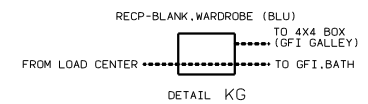
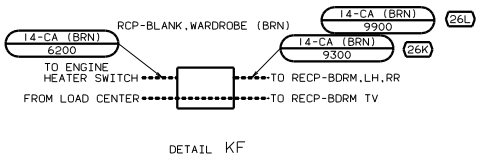
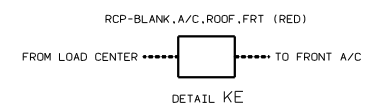
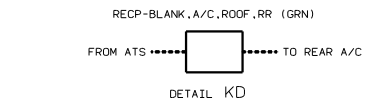
SHEET 9 OF 23 1.E. NO.



- BOX 8289-02-000(2)
- SCREW 667-08-128(4)
- COVER 8294-02-000(2)
- CONNECTOR 8356-01-000(6)
- WIRE 133678-01-000 (2)
- CONNECTOR 8313-01-000(7)
- 8311-01-000
- SCREW-GROUND, GREEN 103291-01-000(2)



- BOX 8289-02-000(2)
- SCREW 667-08-128(4)
- COVER 8294-02-000(2)
- CONNECTOR 8356-01-000(6)
- WIRE 133678-01-000 (2)
- CONNECTOR 8313-01-000(7)
- 8311-01-000
- SCREW-GROUND, GREEN 103291-01-000(2)



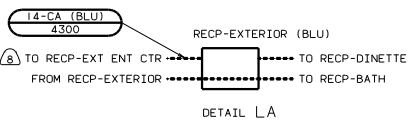
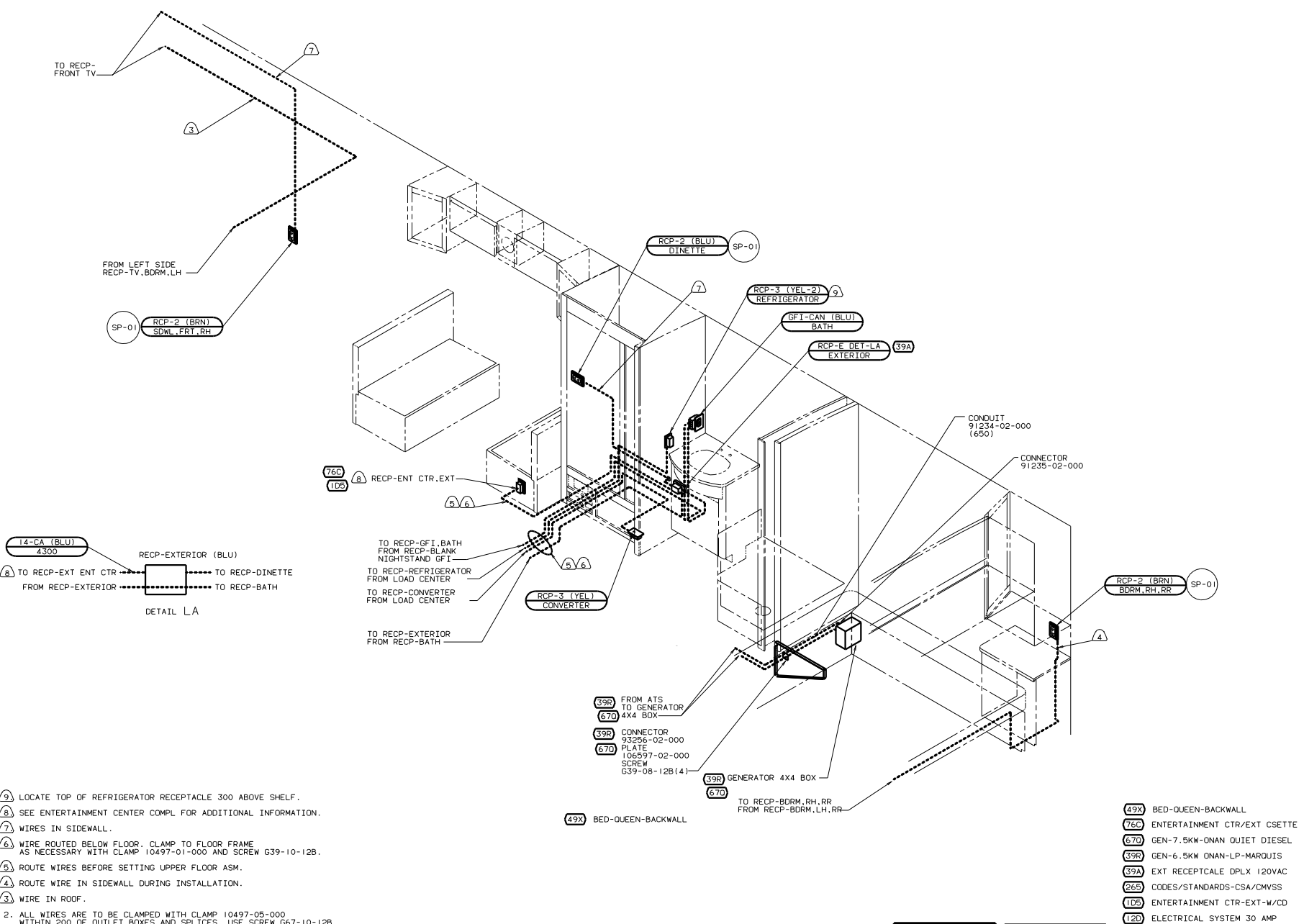
1. ALL WIRES ARE TO BE CLAMPED WITH CLAMP 10495-01-000 WITHIN 200 OF OUTLET BOXES AND SPLICES. USE SCREW 667-10-128.
2. ALL WIRES ARE TO BE CLAMPED WITH CLAMP 10495-01-000 OR CLIP 80734-01-000 EVERY 700, USE SCREW 667-10-128 UNLESS OTHERWISE SPECIFIED.

FOR ELECTRICAL TORQUE SPECIFICATIONS SEE DWG NO. 128783-01-000

FOR ELECTRICAL CALLOUTS SEE DWG NO. 121359-01-000

- 49X) BED-QUEEN-BACKWALL
- 670) GEN-7.5KW ONAN QUIET DIESEL
- 39R) GEN-6.5KW ONAN-LP-MARQUIS
- 26L) REAR STEREO SYSTEM W/CASSETTE
- 28K) REAR STEREO SYSTEM WITHOUT
- 26S) CODES/STANDARDS-CSA/CMVSS
- 12D) ELECTRICAL SYSTEM 30 AMP

99 KL36L, PUSHER 26S 12D  
 TITLE: WIRING INSTL - BODY (110130CAN)  
 SHEET 10 OF 23 FILE NO. 130345



- ⑨ LOCATE TOP OF REFRIGERATOR RECEPTACLE 300 ABOVE SHELF.
  - ⑧ SEE ENTERTAINMENT CENTER COMPL FOR ADDITIONAL INFORMATION.
  - ⑦ WIRES IN SIDEWALL.
  - ⑥ WIRE ROUTED BELOW FLOOR. CLAMP TO FLOOR FRAME AS NECESSARY WITH CLAMP 10497-01-000 AND SCREW G39-10-12B.
  - ⑤ ROUTE WIRES BEFORE SETTING UPPER FLOOR ASM.
  - ④ ROUTE WIRE IN SIDEWALL DURING INSTALLATION.
  - ③ WIRE IN ROOF.
2. ALL WIRES ARE TO BE CLAMPED WITH CLAMP 10497-05-000 WITHIN 200 OF OUTLET BOXES AND SPLICES. USE SCREW G67-10-12B.
1. ALL WIRE TO BE CLAMPED WITH CLAMP 10495-01-000 OR CLIP 80734-01-000 EVERY 600. USE SCREW G67-10-12B UNLESS OTHERWISE SPECIFIED.

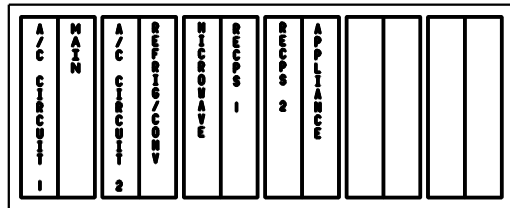
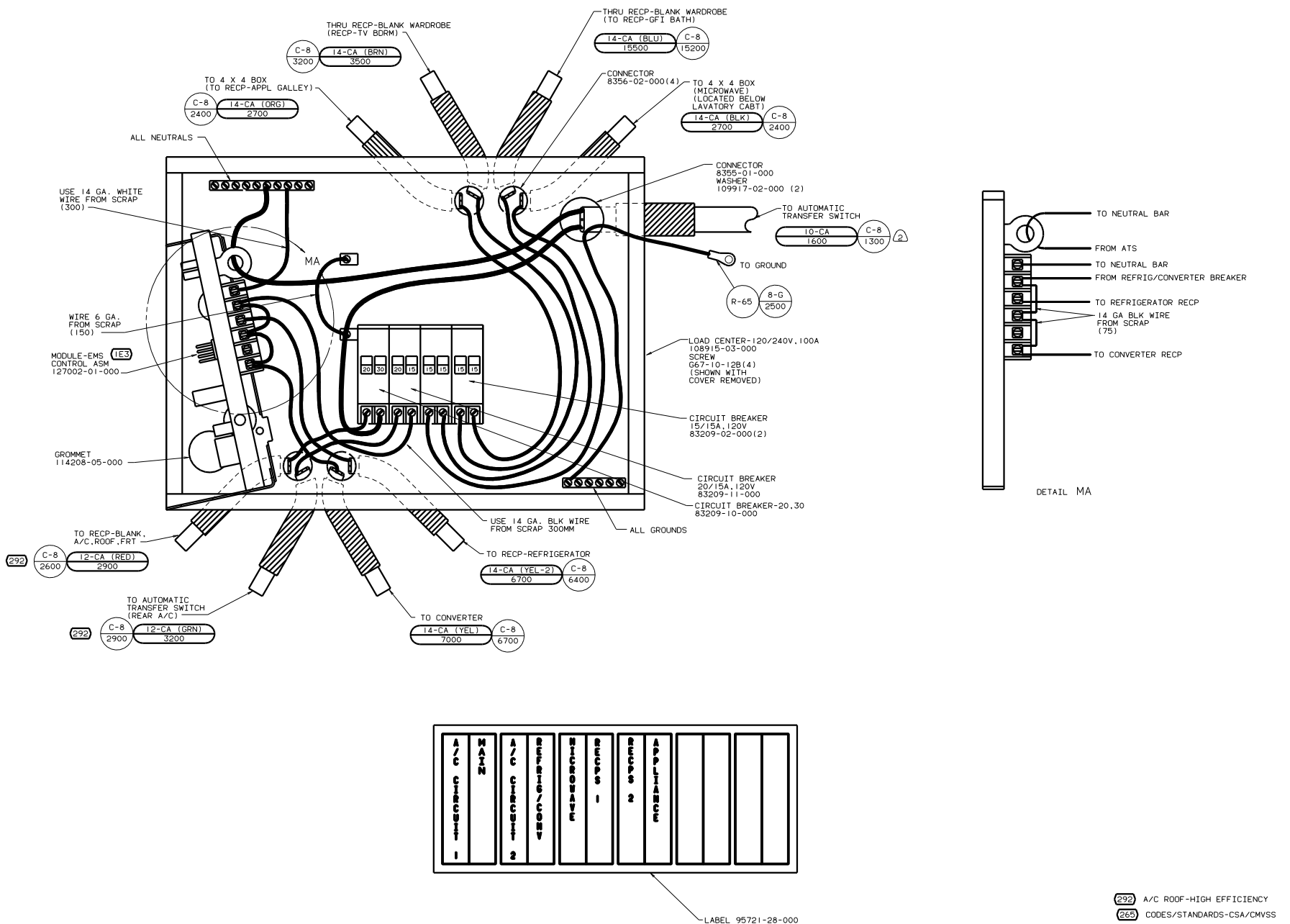
- ③9R FROM ATS TO GENERATOR
- ⑥70 4X4 BOX
- ③9R CONNECTOR
- ⑥70 93256-02-000
- ⑥70 PLATE
- ⑥70 106597-02-000
- ⑥70 SCREW
- ⑥70 G39-08-12B(4)
- ③9R GENERATOR 4X4 BOX
- ⑥70 TO RECP-BDRM,RH,RR FROM RECP-BDRM,LH,RR
- ④9X BED-QUEEN-BACKWALL

- ④9X BED-QUEEN-BACKWALL
- ⑦6C ENTERTAINMENT CTR/EXT CSETTE
- ⑥70 GEN-7.5KW-ONAN QUIET DIESEL
- ③9R GEN-6.5KW-ONAN-LP-MARQUIS
- ③9A EXT RECEPTACLE DPLX 120VAC
- ⑦6S CODES/STANDARDS-CSA/CMVSS
- ①DS ENTERTAINMENT CTR-EXT-W/CD
- ①20 ELECTRICAL SYSTEM 30 AMP

FOR ELECTRICAL TORQUE SPECIFICATIONS SEE DWG NO. 128783-01-000

FOR ELECTRICAL CALLOUTS SEE DWG NO. 121339-01-000

99 KL36L,PUSHER ⑦6S ①20  
 WIRING INSTL-BODY (110R30CAN)  
 SHEET 11 OF 23 130345



LABEL 95721-28-000

INSTALL LABEL ON FRONT PANEL BELOW BREAKERS BETWEEN MOUNTING HOLES

- 3. ATTACH WIRE TO BACKSIDE OF LOAD CENTER. USE EXISTING HOLES AND TIE-WIRE 11673-01-000.
- 2. WIRE MUST BE 600 LONG INSIDE BOX ALL OTHERS TO BE 300.
- 1. ALL GROUND WIRES TO BE COVERED WITH TUBING 8041-02-000.

- 292 A/C ROOF-HIGH EFFICIENCY
- 265 CODES/STANDARDS-CSA/CMVSS
- 1E3 ENERGY MANEMNT SYSTEM
- 120 ELECTRICAL SYSTEM 30 AMP

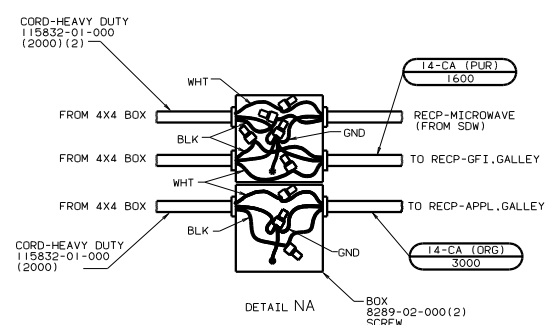
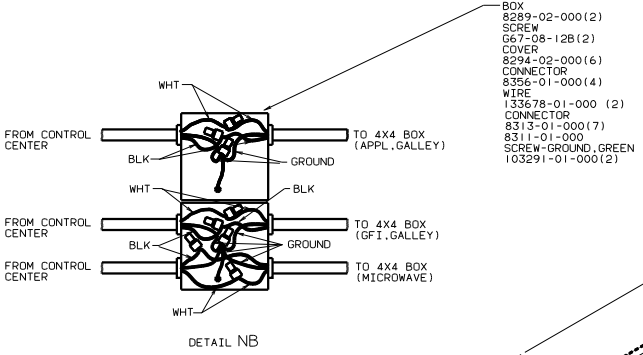
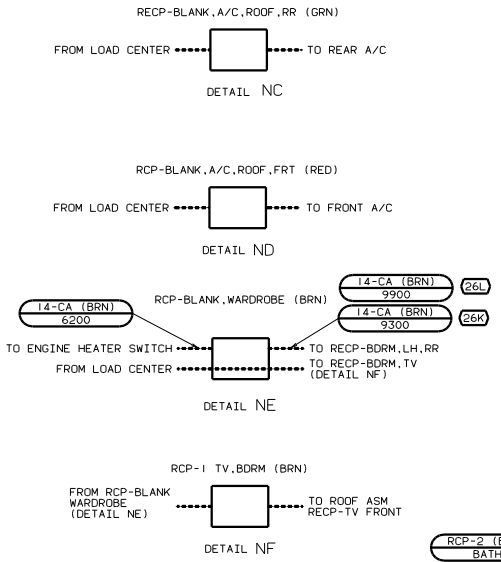
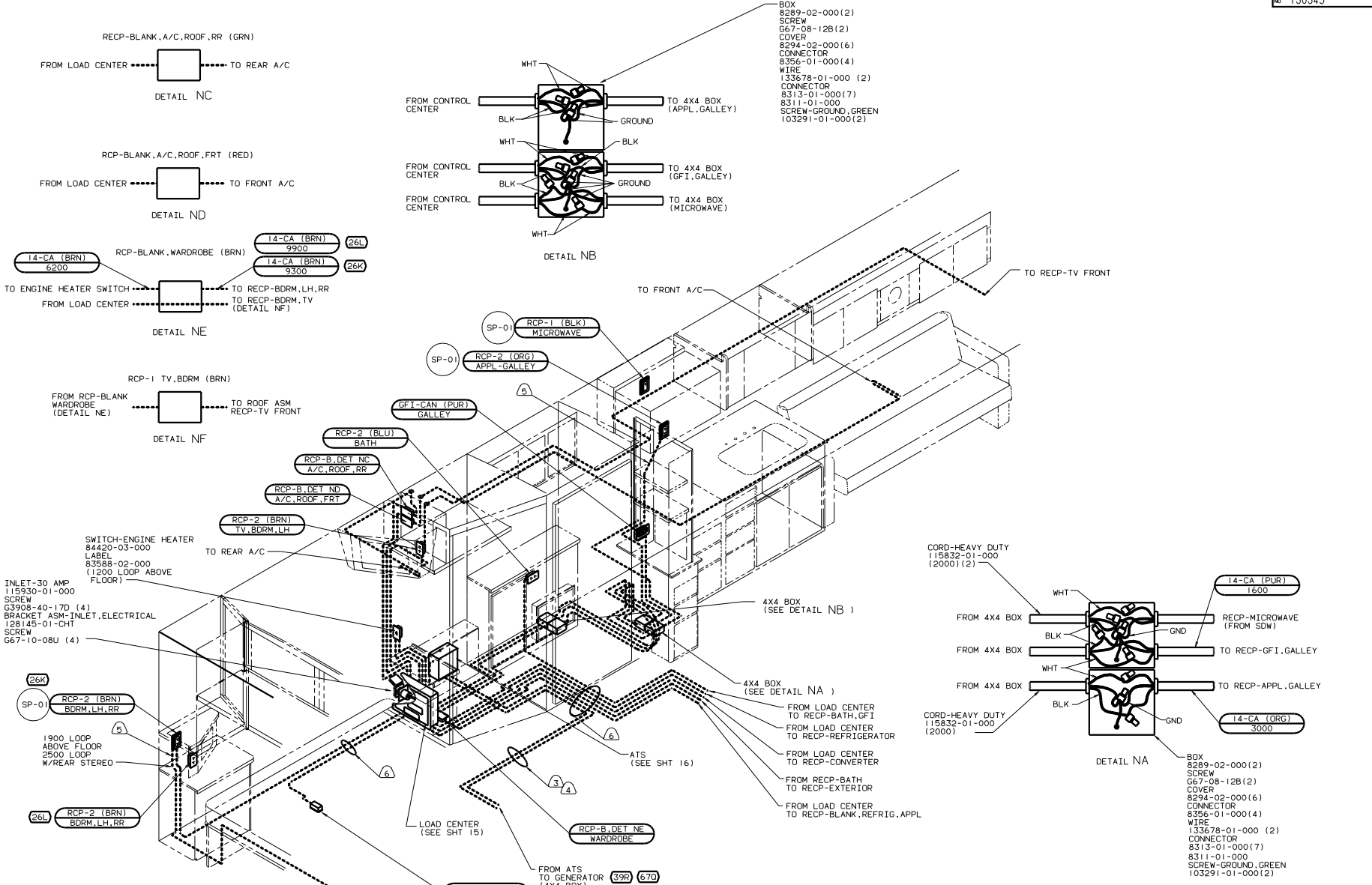
FOR ELECTRICAL TORQUE SPECIFICATIONS SEE DWG NO. 128763-01-000

FOR ELECTRICAL CALLOUTS SEE DWG NO. 121339-01-000

99 KL36L, PUSHER 265 120 1E3

WIRING INSTL-BODY(30 LC CAN)

130345



- 1. ALL WIRES TO BE CLAMPED WITH CLAMP 10495-01-000 OR CLIP 80734-01-000 EVERY 700, USE SCREW G67-10-128 UNLESS OTHERWISE SPECIFIED.
- 2. ALL WIRES ARE TO BE CLAMPED WITH CLAMP 10497-05-000 WITHIN 200 OF OUTLET BOXES AND SPLICES. USE SCREW G67-10-128.
- 3. ROUTE WIRES BEFORE SETTING UPPER FLOOR.
- 4. ROUTE WIRES ALONG FLOOR TUBES. WIRE TIE TO HANGERS USING TIE 8343-03-000.
- 5. ROUTE WIRE IN SIDEWALL DURING INSTALLATION.
- 6. ROUTE WIRE THRU FLOOR.
- 7. WIRE ROUTED BELOW FLOOR. CLAMP TO FLOOR AS NECESSARY WITH CLAMP 10497-01-000. CLAMPS TO BE LOCATED ABOVE STORAGE AREAS EVERY 600MM.

- 39R (67D) FROM ATS TO GENERATOR (4X4 BOX)
- 49X BED-QUEEN-BACKWALL
- 67D GEN-7.5KW-ONAN QUIET DIESEL
- 39R GEN-6.5KW ONAN-LP-MARQUIS
- 26L REAR STEREO SYSTEM W/CASSETTE
- 26K REAR STEREO SYSTEM WITHOUT
- 26S CODES/STANDARDS-CSA/CMVSS

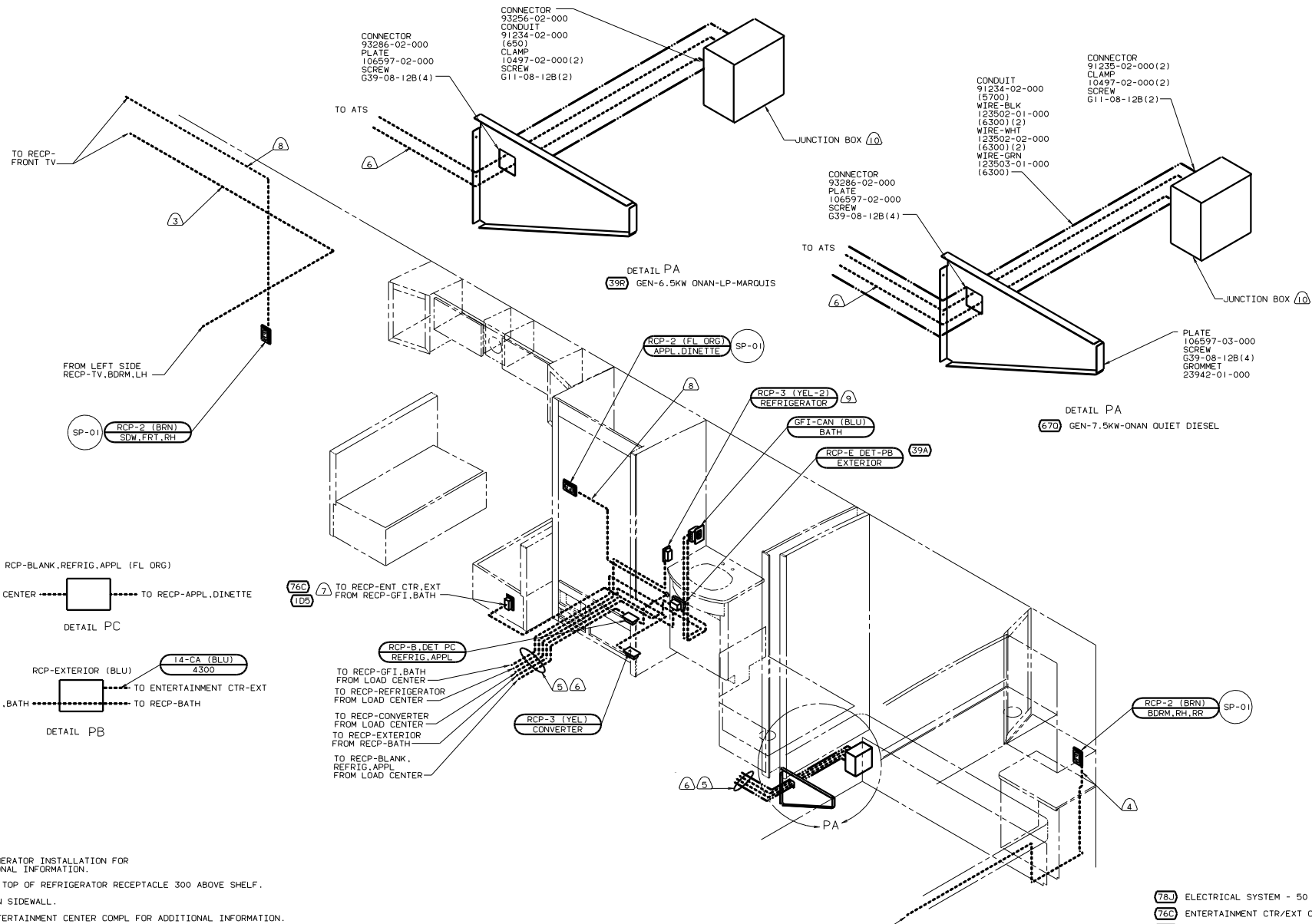
- BOX 8289-02-000(2)
- SCREW G67-08-128(2)
- COVER 8294-02-000(6)
- CONNECTOR 8356-01-000(4)
- WIRE 133678-01-000 (2)
- CONNECTOR 8313-01-000(7)
- 8311-01-000
- SCREW-GROUND, GREEN 103291-01-000(2)

FOR ELECTRICAL TORQUE SPECIFICATIONS SEE DWG NO. 128783-01-000

FOR ELECTRICAL CALLOUTS SEE DWG NO. 121339-01-000

- 49X BED-QUEEN-BACKWALL
- 78J ELECTRICAL SYSTEM - 50 AMP
- 67D GEN-7.5KW-ONAN QUIET DIESEL
- 39R GEN-6.5KW ONAN-LP-MARQUIS
- 26L REAR STEREO SYSTEM W/CASSETTE
- 26K REAR STEREO SYSTEM WITHOUT
- 26S CODES/STANDARDS-CSA/CMVSS

99 KL36L, PUSHER (26S) (78J)  
 WIRING INSTL - BODY (110150CAN)  
 130345



- 10 SEE GENERATOR INSTALLATION FOR ADDITIONAL INFORMATION.
- 9 LOCATE TOP OF REFRIGERATOR RECEPTACLE 300 ABOVE SHELF.
- 8 WIRE IN SIDEWALL.
- 7 SEE ENTERTAINMENT CENTER COMPL FOR ADDITIONAL INFORMATION.
- 6 WIRE ROUTED BELOW FLOOR. CLAMP TO FLOOR FRAME AS NECESSARY WITH CLAMP 10497-01-000 AND SCREW G39-10-12B.
- 5 ROUTE WIRES BEFORE SETTING UPPER FLOOR ASM.
- 4 ROUTE WIRE IN SIDEWALL DURING INSTALLATION.
- 3 WIRE IN ROOF.

2. ALL WIRES ARE TO BE CLAMPED WITH CLAMP 10497-05-000 WITHIN 200 OF OUTLET BOXES AND SPLICES. USE SCREW G67-10-12B.

1. ALL WIRE TO BE CLAMPED WITH CLAMP 10495-01-000 OR CLIP 80734-02-000 EVERY 600. USE SCREW G67-10-12B UNLESS OTHERWISE SPECIFIED.

NOTES:

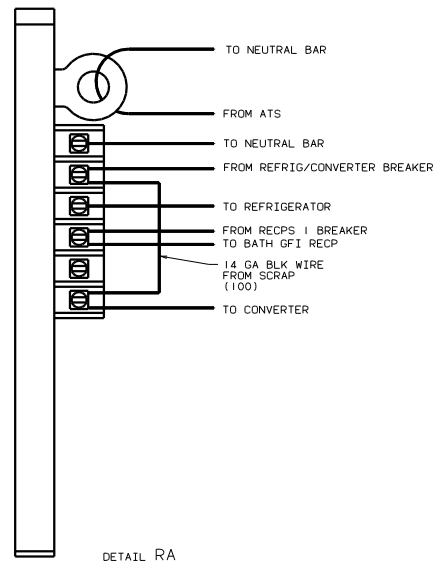
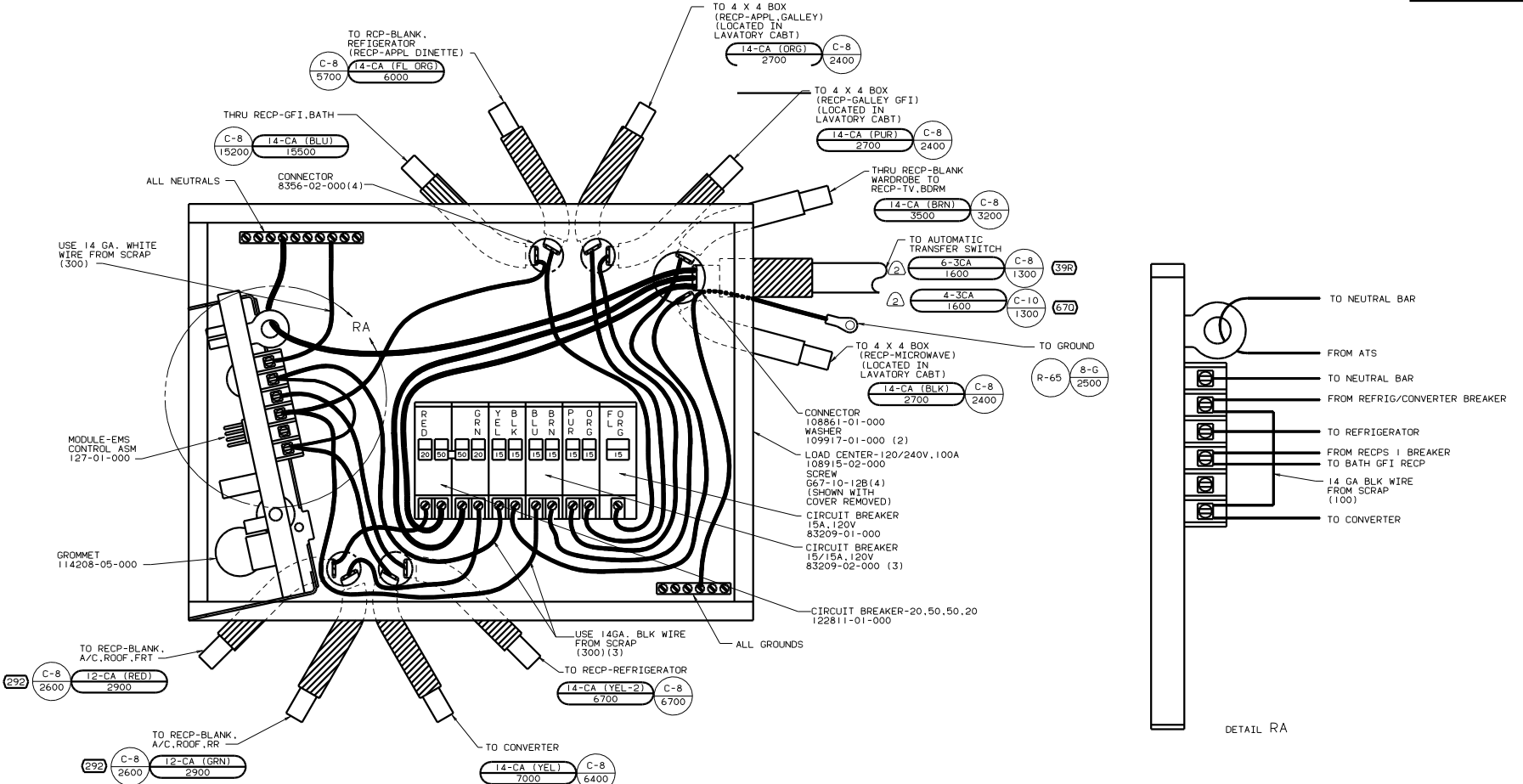
- 78J ELECTRICAL SYSTEM - 50 AMP
- 76C ENTERTAINMENT CTR/EXT CSETTE
- 670 GEN-7.5KW-ONAN QUIET DIESEL
- 49X BED-QUEEN-BACKWALL
- 39G GEN-6.5KW ONAN-GAS-EMERALD
- 39A EXT RECEPTACLE DPLX 120VAC
- 265 CODES/STANDARDS-CSA/CMVSS
- 105 ENTERTAINMENT CTR-EXT-W/CD

99 KL36L, PUSHER (265) (78J)

FOR ELECTRICAL TORQUE SPECIFICATIONS SEE DWG NO. 128783-01-000

FOR ELECTRICAL CALLOUTS SEE DWG NO. 121339-01-000

WIRING INSTL-BODY(110R50CAN)  
 SHEET 14 OF 23  
 130345



A/C CIRCUIT 1	MAIN	MAIN	A/C CIRCUIT 2	REFRIG/CONV	MICROWAVE	RECPS 1	RECPS 2	RECPS 3	APPL 1	APPL 2	WASHER/DRYER
---------------	------	------	---------------	-------------	-----------	---------	---------	---------	--------	--------	--------------

INSTALL LABEL ON FRONT PANEL BELOW BREAKERS BETWEEN MOUNTING HOLES LABEL 95721-30-000

- 3. ATTACH WIRES TO BACKSIDE OF LOAD CENTER. USE EXISTING HOLES AND TIE-WIRE 116673-01-000.
- 2. WIRE MUST BE 600 LONG INSIDE BOX. ALL OTHERS TO BE 300 LONG.
- 1. ALL GROUND WIRES TO BE COVERED WITH TUBING 8041-02-000.

NOTES:

INSTALL LABEL ON FRONT PANEL BELOW BREAKERS BETWEEN MOUNTING HOLES LABEL 95721-30-000

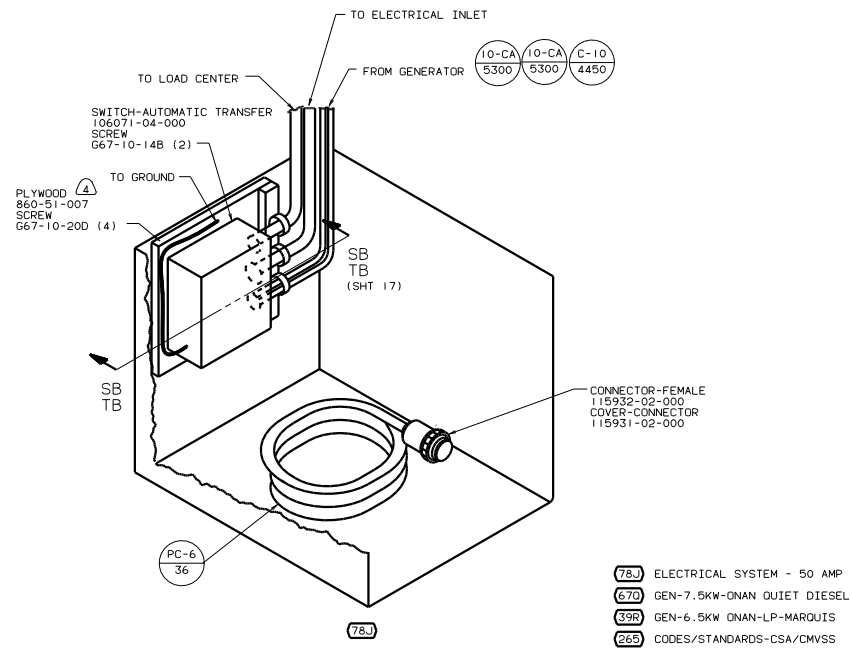
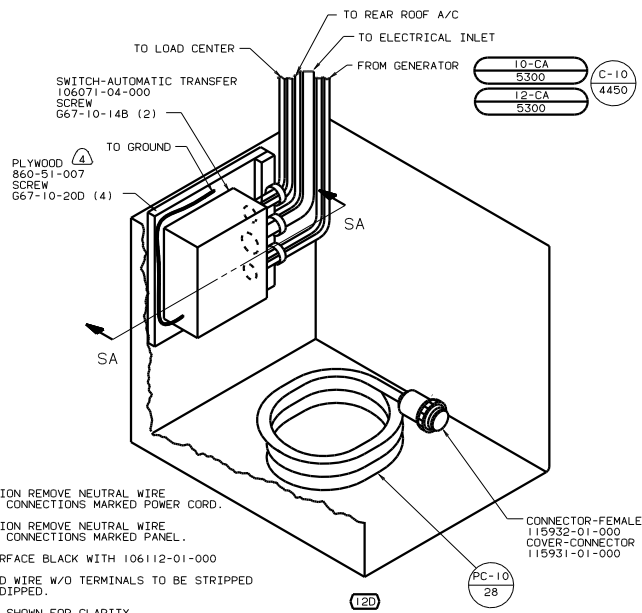
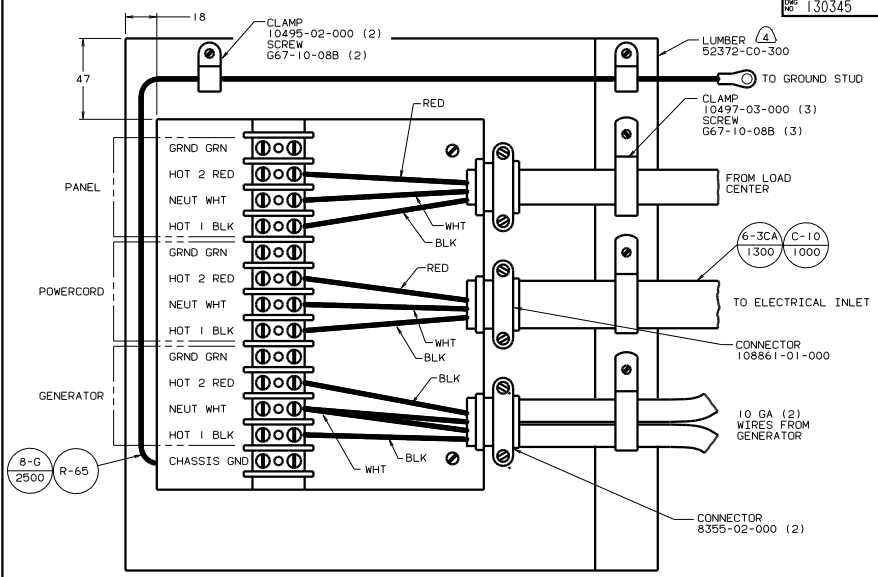
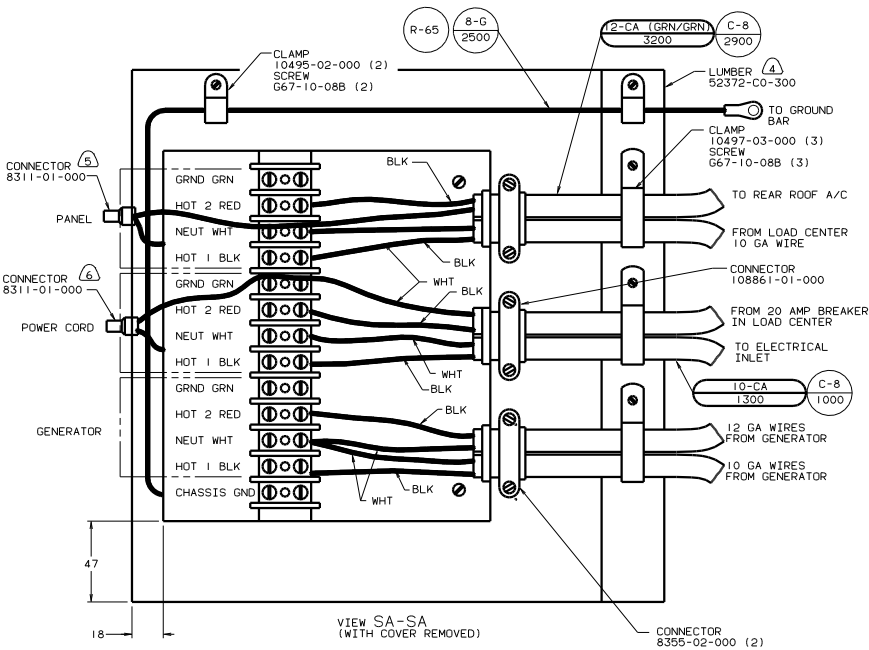
- 78J ELECTRICAL SYSTEM - 50 AMP
- 67D GEN-7.5KW-ONAN QUIET DIESEL
- 39R GEN-6.5KW-ONAN-LP-MARQUIS
- 292 A/C ROOF-HIGH EFFICIENCY
- 265 CODES/STANDARDS-CSA/CMVSS

FOR ELECTRICAL TORQUE SPECIFICATIONS SEE DWG NO. 126763-01-000

FOR ELECTRICAL CALLOUTS SEE DWG NO. 121339-01-000

99 KL36L, PUSHER (265) (78J) WIRING INSTL-BODY(50 LC CAN) SHEET 15 OF 23 130345





- Ⓐ FOR THIS CONNECTION REMOVE NEUTRAL WIRE MARKED BLUE FROM CONNECTIONS MARKED POWER CORD.
- Ⓑ FOR THIS CONNECTION REMOVE NEUTRAL WIRE MARKED BLUE FROM CONNECTIONS MARKED PANEL.
- Ⓓ PAINT EXPOSED SURFACE BLACK WITH 106112-01-000
- 3. ALL 110V STRANDED WIRE W/O TERMINALS TO BE STRIPPED 10MM AND SOLDER DIPPED.
- 2. GROUND WIRES NOT SHOWN FOR CLARITY.
- 1. ALL WIRES TO BE CLAMPED WITH IN 200 OF BOX.

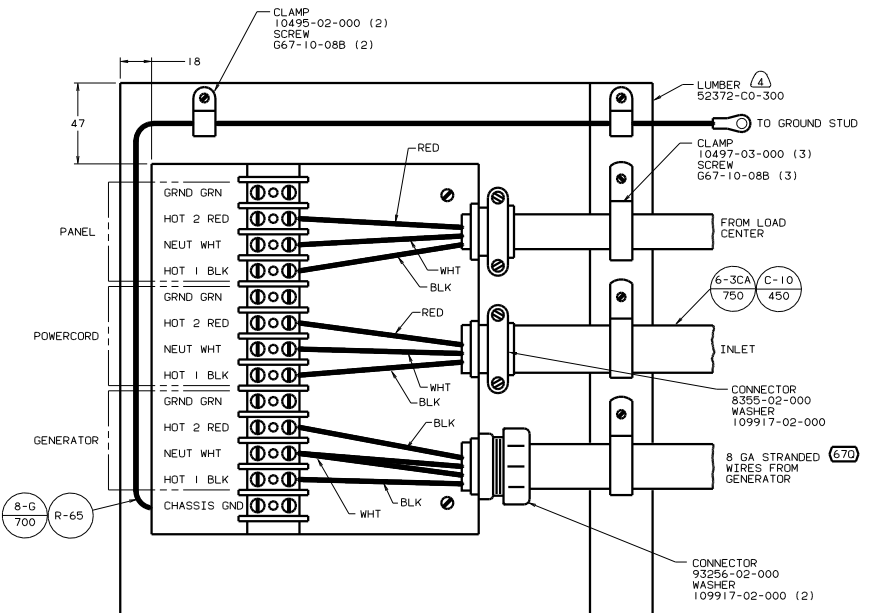
FOR ELECTRICAL TORQUE SPECIFICATIONS SEE DWG NO. 128783-01-000

FOR ELECTRICAL CALLOUTS SEE DWG NO. 121339-01-000

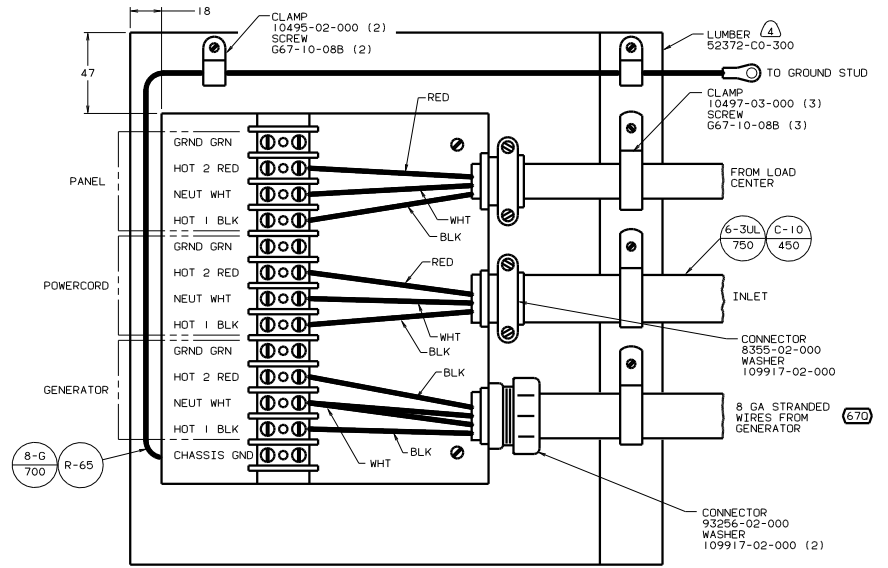
- (78J) ELECTRICAL SYSTEM - 50 AMP
- (670) GEN-7.5KW-ONAN QUIET DIESEL
- (30R) GEN-6.5KW ONAN-LP-MARQUIS
- (265) CODES/STANDARDS-CSA/CMVSS
- (12D) ELECTRICAL SYSTEM 30 AMP

99 KL36L,PUSHER (265)

TITLE: WIRING INSTL-BODY (ATS)  
 30 THE S&K GROUP, INC. THE S&K GROUP, INC.  
 SHEET 16 OF 23 1.E. NO. 130345



VIEW TB-TB  
(WITH COVER REMOVED)  
(265) CODES/STANDARDS-CSA/CMVSS



VIEW TA-TA  
(WITH COVER REMOVED)  
(1B1) CODES STANDARDS/USA

- ▲ PAINT EXPOSED SURFACE BLACK WITH 106112-01-000
- 3. ALL 110V STRANDED WIRE W/O TERMINALS TO BE STRIPPED 10MM AND SOLDER DIPPED.
- 2. GROUND WIRES NOT SHOWN FOR CLARITY.
- 1. ALL WIRES TO BE CLAMPED WITH IN 200 OF BOX.

FOR ELECTRICAL SPECIFICATIONS SEE DWG NO. 128783-01-000

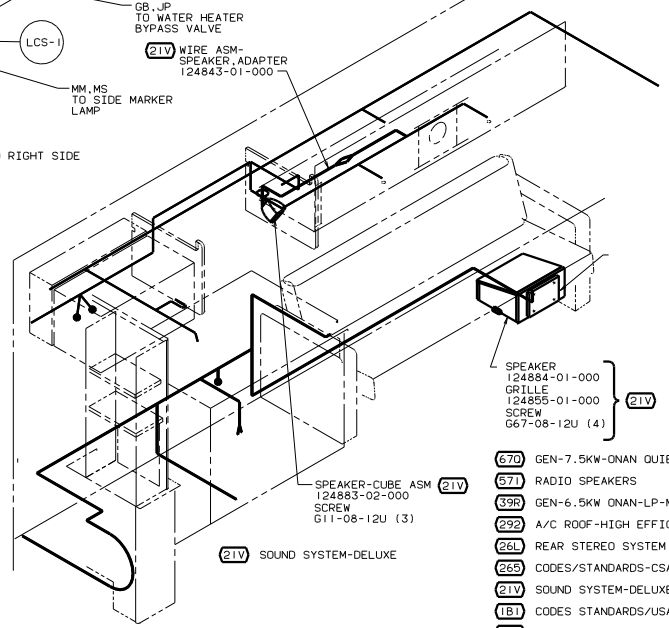
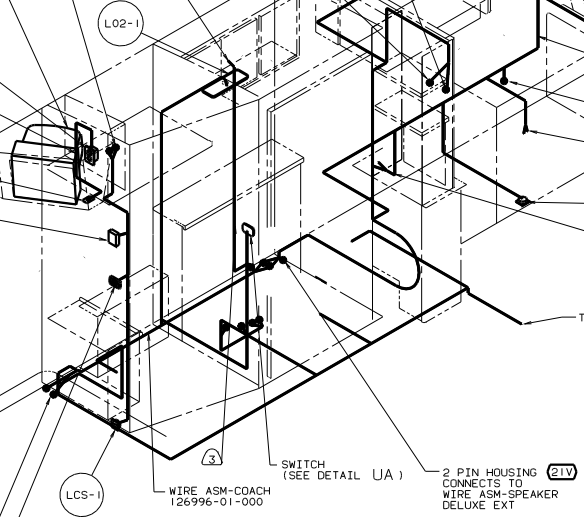
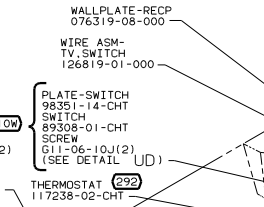
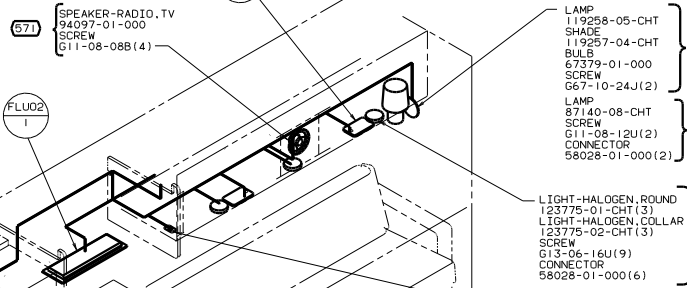
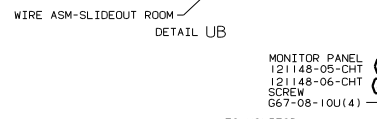
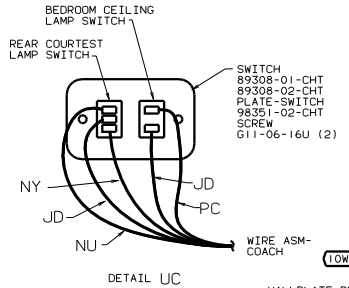
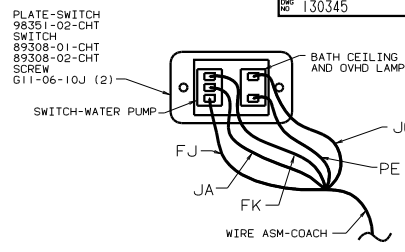
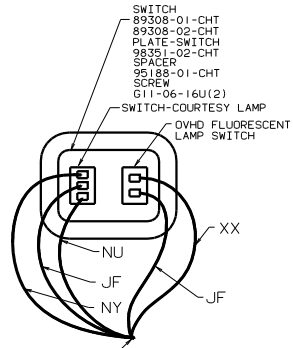
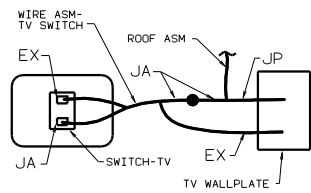
(X-X)

FOR ELECTRICAL CALLOUTS SEE DWG NO. 121339-01-000

- (78J) ELECTRICAL SYSTEM - 50 AMP
- (670) GEN-7.5KW-ONAN QUIET DIESEL
- (265) CODES/STANDARDS-CSA/CMVSS
- (1B1) CODES STANDARDS/USA

99 KL36L,PUSHER (265) (1B1)

TITLE	WIRING INSTL-BODY(AIS)
NO. OF SHEETS	17
SHEET NO.	17
REV	1
DATE	10/23/05
DWG NO.	130345



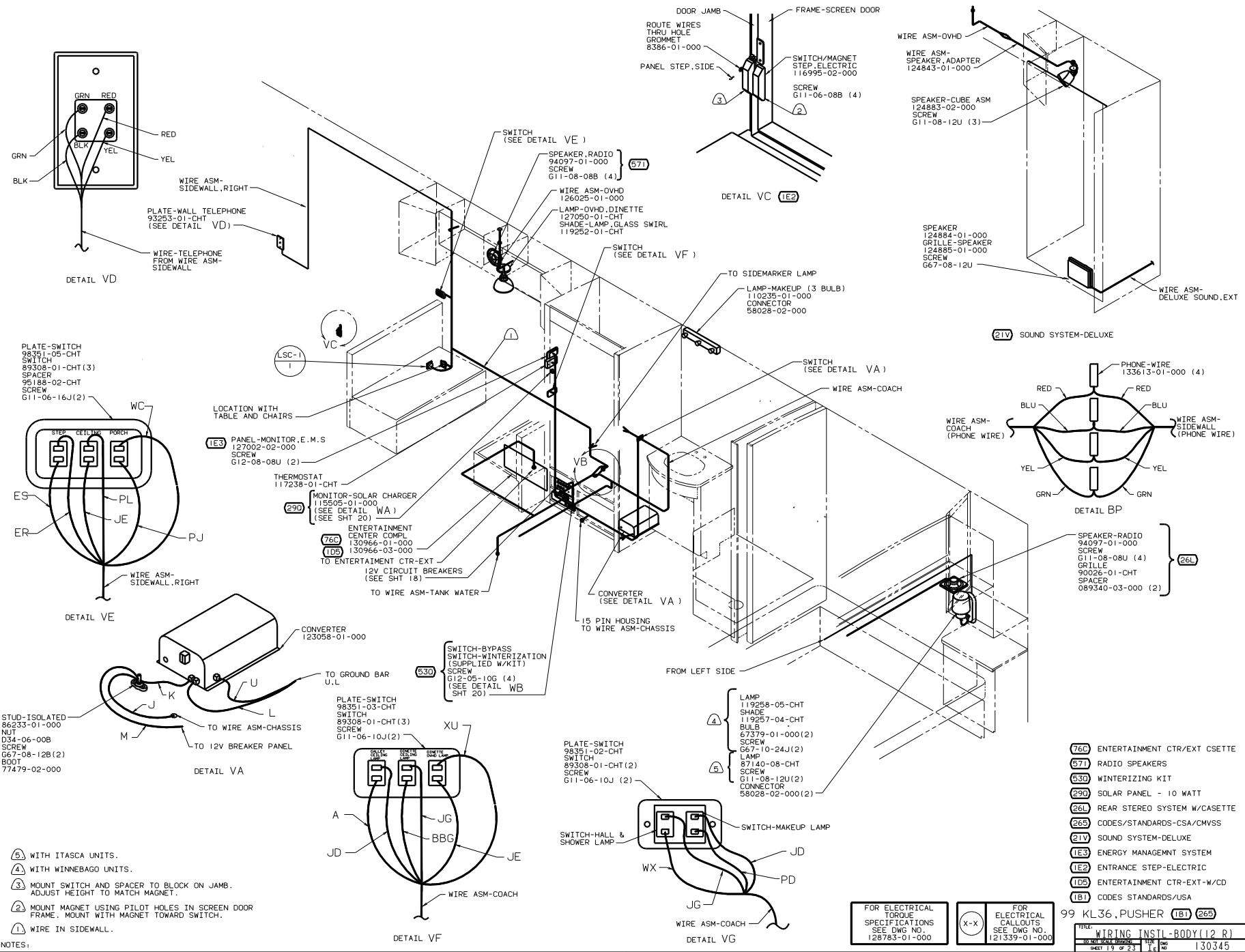
- (26L) SPEAKER-RADIO 94097-01-000(2)
- GRILLE 90026-01-CHT
- SCREW G11-08-08B(8)
- (1) LAMP 119258-05-CHT
- SHADE 119257-04-CHT
- BULB 67379-01-000(2)
- SCREW G67-10-24J(2)
- (2) LAMP 87140-08-CHT
- SCREW G11-08-12U(2)
- CONNECTOR 58028-02-000(2)
- (26L) WIRE ASM-REAR STEREO 124336-03-000
- (26L) RADIO-WALL MOUNT AM/FM CASS 126958-01-000
- SCREW 76790-03-00(2)
- WIRE ASM-OVHD 122279-02-000
- (21V) WIRE ASM-SPEAKER ADAPTER 124843-01-000
- MM, MS TO SIDE MARKER LAMP
- (21V) SOUND SYSTEM-DELUXE
- (670) GEN-7.5KW-ONAN QUIET DIESEL
- (671) RADIO SPEAKERS
- (39R) GEN-6.5KW ONAN-LP-MARQUIIS
- (292) A/C ROOF-HIGH EFFICIENCY
- (26L) REAR STEREO SYSTEM W/CASSETTE
- (265) CODES/STANDARDS-CSA/CMVSS
- (21V) SOUND SYSTEM-DELUXE
- (1B1) CODES STANDARDS/USA
- (10W) TV-REAR
- 99 KL36L, PUSHER (1B1) (265)

- (4) ADD .25 DIA HOLES IN BACKWALL WITH REAR STEREO. WIRE TO BE ROUTED BETWEEN BACKWALL AND REAR CAP.
- (3) WIRE ROUTED IN SIDEWALL.
- (2) WITH ITASCA UNITS.
- (1) WITH WINNEBAGO UNITS.

FOR ELECTRICAL TORQUE SPECIFICATIONS SEE DWG NO. 128783-01-000

FOR ELECTRICAL CALLOUTS SEE DWG NO. 121339-01-000

WIRING INSTL-BODY (12 L)  
SHEET 18 OF 23  
130345



- NOTES:
- ⑤ WITH ITASCA UNITS.
  - ④ WITH WINNEBAGO UNITS.
  - ③ MOUNT SWITCH AND SPACER TO BLOCK ON JAMB. ADJUST HEIGHT TO MATCH MAGNET.
  - ② MOUNT MAGNET USING PILOT HOLES IN SCREEN DOOR FRAME. MOUNT WITH MAGNET TOWARD SWITCH.
  - ① WIRE IN SIDEWALL.

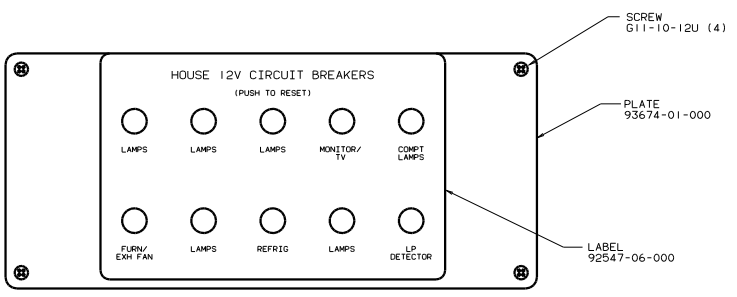
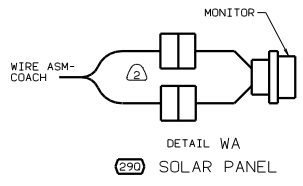
- ⑦⑥ ENTERTAINMENT CTR/EXT CSETTE
- ⑤⑦① RADIO SPEAKERS
- ⑤③① WINTERIZING KIT
- ②⑨① SOLAR PANEL - 10 WATT
- ②⑥① REAR STEREO SYSTEM W/CASSETTE
- ②⑥⑤ CODES/STANDARDS-CSA/CMVSS
- ②①③ SOUND SYSTEM-DELUXE
- ②①③ ENERGY MANAGMNT SYSTEM
- ①②② ENTRANCE STEP-ELECTRIC
- ①②⑤ ENTERTAINMENT CTR-EXT-W/CD
- ①②① CODES STANDARDS/USA

FOR ELECTRICAL TORQUE SPECIFICATIONS SEE DWG NO. 126783-01-000



FOR ELECTRICAL CALLOUTS SEE DWG NO. 121339-01-000

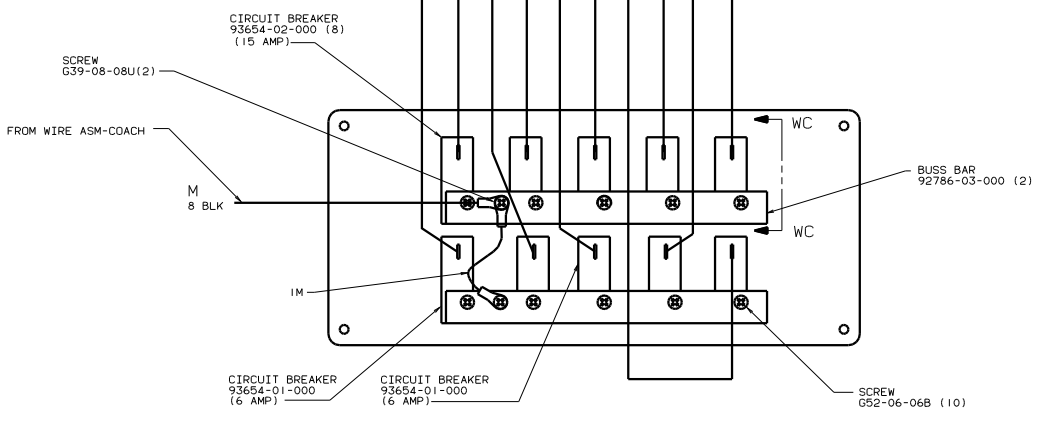
99 KL36, PUSHER ①②① ②⑥⑤	
TITLE	WIRING INSTL-BODY (12 R)
REV	08 04 02 02 02 02
SHEET	19 OF 23
REF	130345



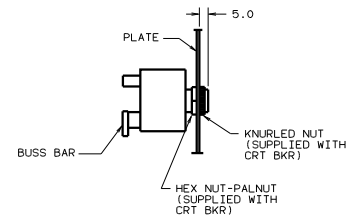
CIRCUIT BREAKER (FRONT VIEW)

FROM WIRE ASM-COACH

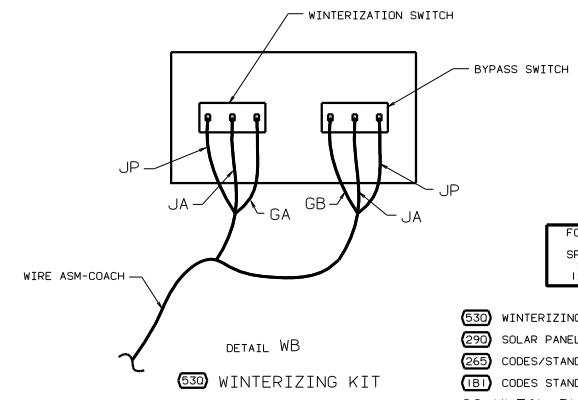
WB WC JG JA 12 PUR ET JC JB JD JF JE



CIRCUIT BREAKER (BACK VIEW)



SECTION WC-WC

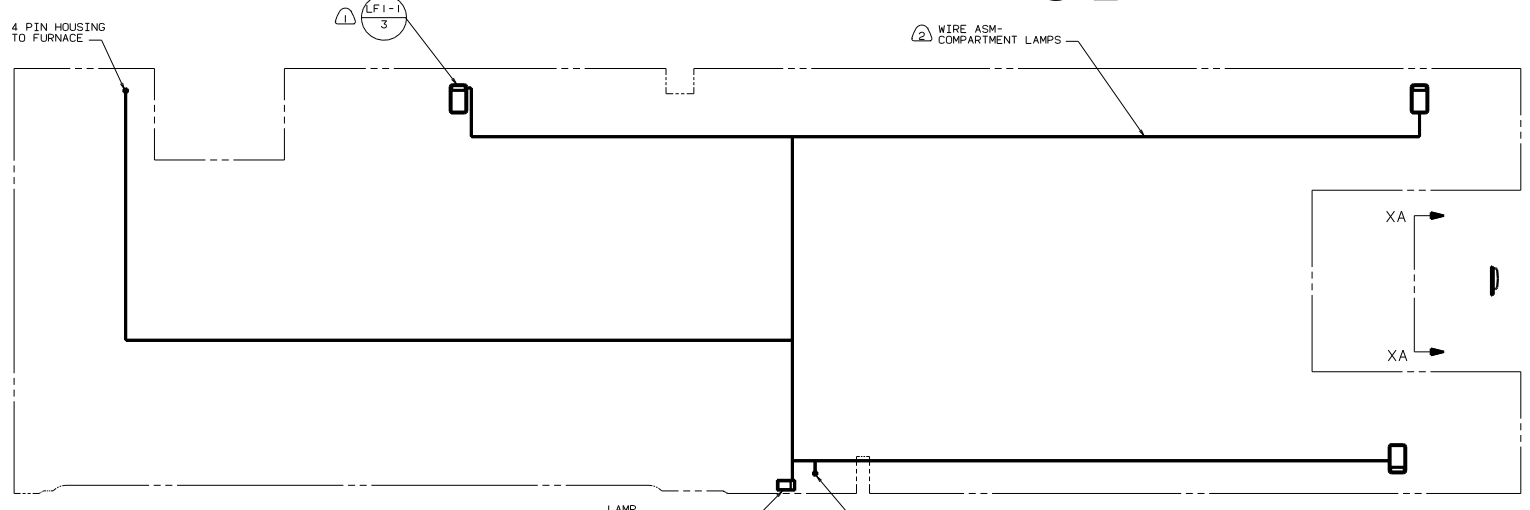
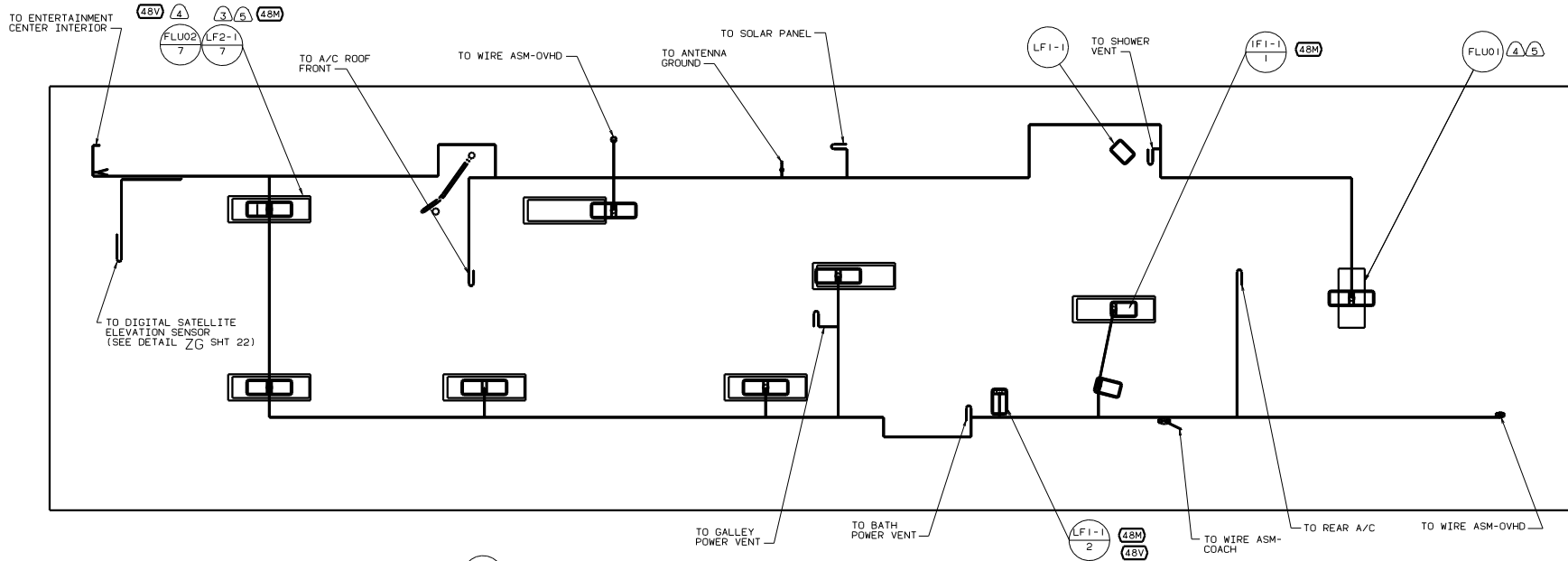


DETAIL WB

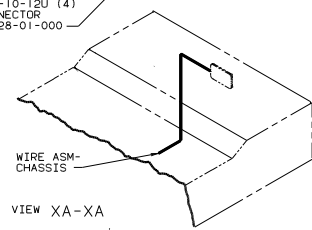
FOR ELECTRICAL TORQUE SPECIFICATIONS SEE DWG NO. 128783-01-000

- 630 WINTERIZING KIT
- 290 SOLAR PANEL - 10 WATT
- 265 CODES/STANDARDS-CSA/CMVSS
- 181 CODES/STANDARDS/USA
- 99 KL36L,PUSHER 181

TITLE		WIRING INSTL-BODY(12 BP)	
NO. OF SHEETS	23	SHEET NO.	20
DATE	11/01/05	DESIGNER	130345



LAMP 86280-01-000  
 SCREW 667-10-12U (4)  
 CONNECTOR 58028-01-000



- NOTES:
- (4) WITH ITASCA UNITS.
  - (3) WITH WINNEBAGO UNITS.
  - (2) WIRE ASM ROUTED IN FLOOR.
  - (1) LAMPS TO BE MOUNTED WITH SWITCH OUTBOARD AND 75 ±20 FROM EDGE OF FLOOR.

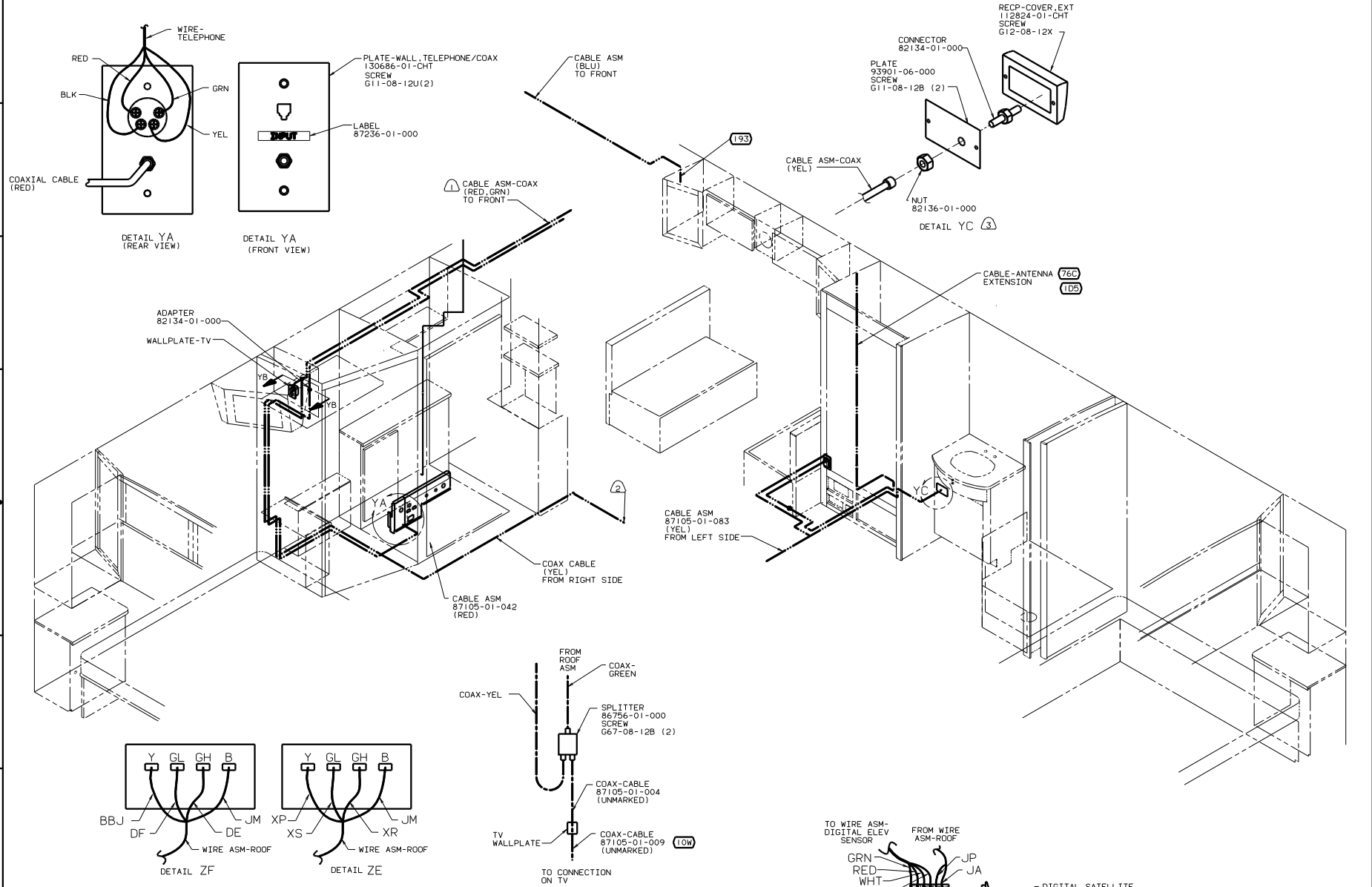
- (48V) LIGHTS-FLUORESCENT
- (48M) LIGHTS-INCANDESCENT
- (265) CODES/STANDARDS-CSA/CMVSS
- (181) CODES STANDARDS/USA

FOR ELECTRICAL TORQUE SPECIFICATIONS SEE DWS NO. 128783-01-000

FOR ELECTRICAL CALLOUTS SEE DWS NO. 121339-01-000

99 KL36L,PUSHER (181) (265)

TITLE: WIRING INSTL-BODY(12 CL.)  
 SHEET 21 OF 23



- ④ 480 SATELLITE DISH.
- ③ SEE SHT 23 FOR ANTENNA CALLOUT.
- ④ SEE ENTERTAINMENT CENTER COMP. FOR ADDITIONAL INFORMATION.
- ③ WITHOUT 76C OR 1D5
- ② WIRE IN FLOOR.
- ① WIRE IN ROOF.

NOTES:

- 76C ENTERTAINMENT CTR/EXT CSETTE
- 265 CODES/STANDARDS-CSA/CMVSS
- 1D5 ENTERTAINMENT CTR-EXT-W/CD
- 1B1 CODES STANDARDS/USA
- 193 TV ANENNA
- LOW TV-REAR

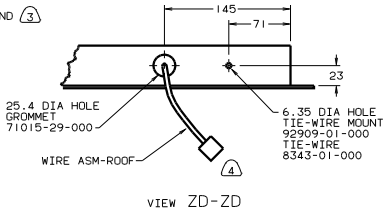
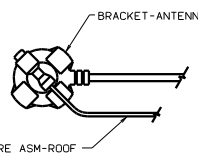
FOR ELECTRICAL TORQUE SPECIFICATIONS SEE DWG NO. 128783-01-000

99KL36L, PUSHER 1B1 265

TITLE: WIRING INSTL-BODY(COAX)

NO. OF SHEETS: 22 SHEET 22 OF 23

130345



- (1B1) LAMP 97917-01-CHT
  - SCREW 667-10-12U(EXT) (4)
  - LAMP 8089-02-000
  - SCREW 667-06-10U(EXT) (2)
  - CONNECTOR 58028-01-000(2)
  - SEAL
- (76C) ANTENNA-SHAFT EXTENDER 109889-04-000
  - BRACKET-ANTENNA GROUND 108847-01-000
  - ANTENNA 90944-01-000
  - CABLE-ANTENNA EXTENSION 77069-02-000(2)
  - SEAL

- (222) AIR CONDITIONER 131186-01-CHT (MACH 1 POWERSAVER)
- CEILING ASM 131184-01-CHT
- BOARD DIVIDER 131184-02-CHT (SEE SHT 22 DETAIL ZF FOR WIRING)

- WIRE ASM-BACKWALL\_FL 129777-04-000 (99 FL)
- 129777-06-000 (99 1/2 FL)

- (26L) BRACKET-ANTENNA GROUND 108847-01-000
- ANTENNA 90944-01-000
- CABLE ASM-GROUND 73328-M9-000
- SEAL

- LAMP-CLEARANCE, RED 102520-02-000 (5)
- SCREW 639-08-16T (10)
- GASKET 102541-01-000 (5)
- BULB 36196-01-000 (5)

- LIGHT ASM-BRAKE 121950-01-000
- SCREW (SUPPLIED W/LAMP)

- LAMP 87201-01-000
- SCREW G11-06-12U(EXT) (2)
- TO SIDE MARKER

(1) (2)

ZA

- (8) SEE DWG 76319-01-000 FOR INSTALLATION OF TV ANTENNA.
- (7) ADD RUBBER BUMPERS TO ROOF UNDER EACH END OF ANTENNA TO PREVENT CONTACT WITH ROOF.
- (6) FOR ITASCA UNITS ONLY.
- (5) INSTALL WITH WIRES TOWARDS ROOF.
- (4) FASTEN TO VENT.
- (3) WRAP BRACKET LEGS AROUND ANTENNA BASE.
- (2) CONNECTOR-PLUG, TRAILER (113589-01-000) TO BE SUPPLIED LOOSE IN COACH WITH TRAILER TOW PACKAGE.
- (1) TAPE BRANCH BACK ALONG WIRE ASM WITH TAPE 8363-01-000.

- (292) AIR CONDITIONER 131187-01-CHT (MACH 3 POWERSAVER PLUS)
- CEILING ASM 131184-01-CHT
- BOARD DIVIDER 131184-02-CHT (SEE SHT 22 DETAIL ZE FOR WIRING)

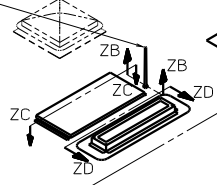
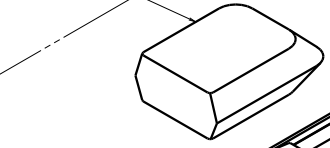
CONNECTS TO WIRE ASM IP.MAIN

DM-1 (480)

- LAMP-CLEARANCE AMBER 102520-01-000(5)
- SCREW 639-08-16T (10)
- GASKET 102541-01-000(5)
- BULBS 36196-01-000(5)

- WIRE ASM-CLEARANCE LAMPS 126486-01-000

ANT-2 (193) (7) (8)



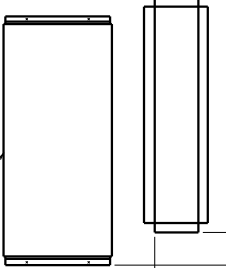
- LAMP ASM-SIDEMARKER 117826-02-000(2)
- BULB 36196-01-000(2)
- GASKET 117826-03-000(2)
- SCREW G11-08-12U(EXT) (4)

- (1B1) LAMP 97917-01-CHT
- SCREW 667-10-12U(EXT) (4)
- LAMP 8089-02-000
- SCREW 667-06-10U(EXT) (2)
- CONNECTOR 58028-01-000(2)
- SEAL

(265)

- LAMP MARKER, BASE 111102-01-000 (2)
- LAMP-MARKER, LENS, AMBER 111102-02-000 (2)
- SCREW G11-08-12U(EXT) (4)

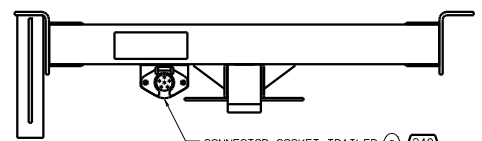
- (290) SOLAR PANEL 115504-01-000
- SCREW G11-08-16U (4)



- LAMP ASM-STOP/TURN/TAIL/BACKUP 117831-01-000 RH
- 117831-02-000 LH
- BULB 37934-01-000 (2)
- 37935-01-000 (2)
- SCREW 639-10-48T (8)

- LAMP ASM-SIDEMARKER 117826-01-000(2)
- SCREW G11-08-12U(EXT) (4)
- BULB 36196-01-000(2)
- GASKET 117826-03-000(2)

- LAMP ASM-SIDE MARKER 117826-01-000(2)
- SCREW G11-08-12U(EXT) (4)
- BULB 36196-01-000(2)
- GASKET 117826-03-000(2)



FOR ELECTRICAL TORQUE SPECIFICATIONS SEE DWG NO. 128783-01-000

- (76C) ENTERTAINMENT CTR/EXT CSETTE
- (290) SOLAR PANEL - 10 WATT
- (292) A/C ROOF-HIGH EFFICIENCY
- (26L) REAR STEREO SYSTEM W/CASSETTE
- (265) CODES/STANDARDS-CSA/CMVSS
- (240) TRAILER HITCH
- (1B5) ENTERTAINMENT CTR-EXT-W/CD
- (1B1) CODES STANDARDS/USA
- (193) TV ANENNA

99 KL36L, PUSHER (1B1) (265)

TITLE	WIRING INSTL - BODY (EX L)
DATE	04/02/05
DRW	23
REV	1
REF	130345