



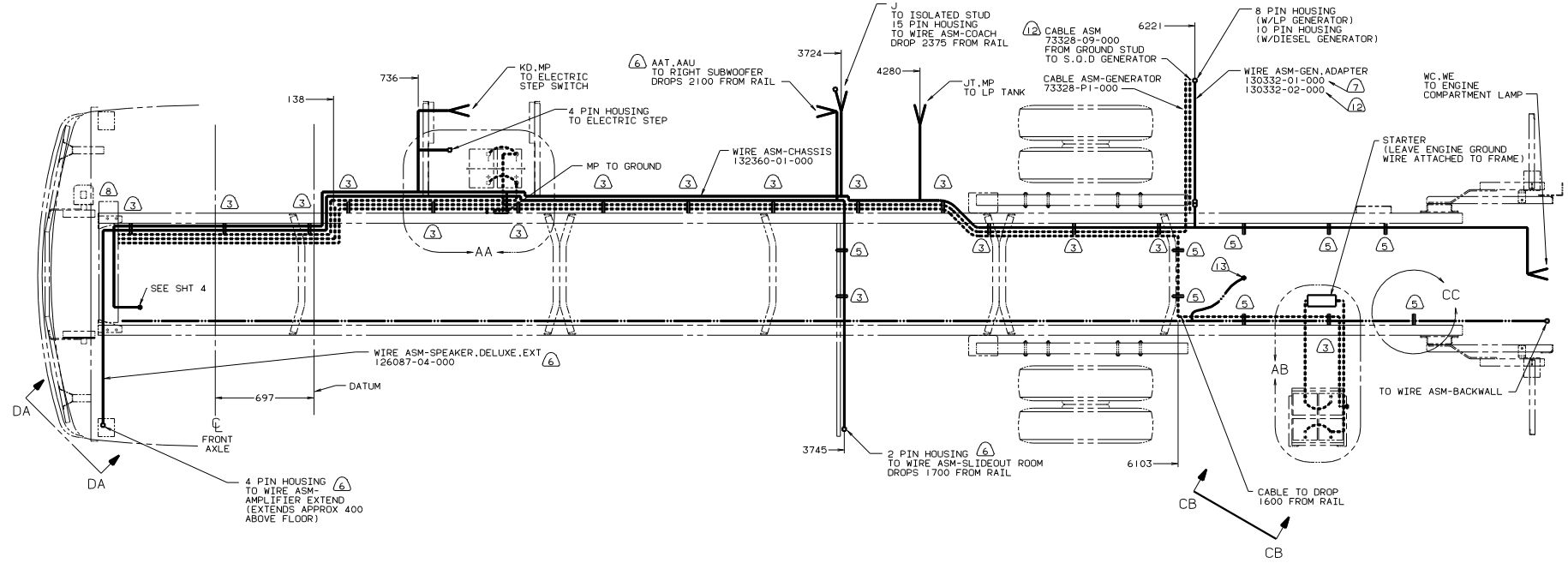
DANGER

Danger of electrical shock, burns or death. Always remove all power sources before attempting any repair, service or diagnostic work. Power can be present from shore power, generator, inverter or battery. All power sources must be disabled and secured before performing any service.



CAUTION

If you lack the skills, tools or equipment to perform diagnostic or repair work leave such work to an authorized Winnebago Industries dealer or other qualified shop.

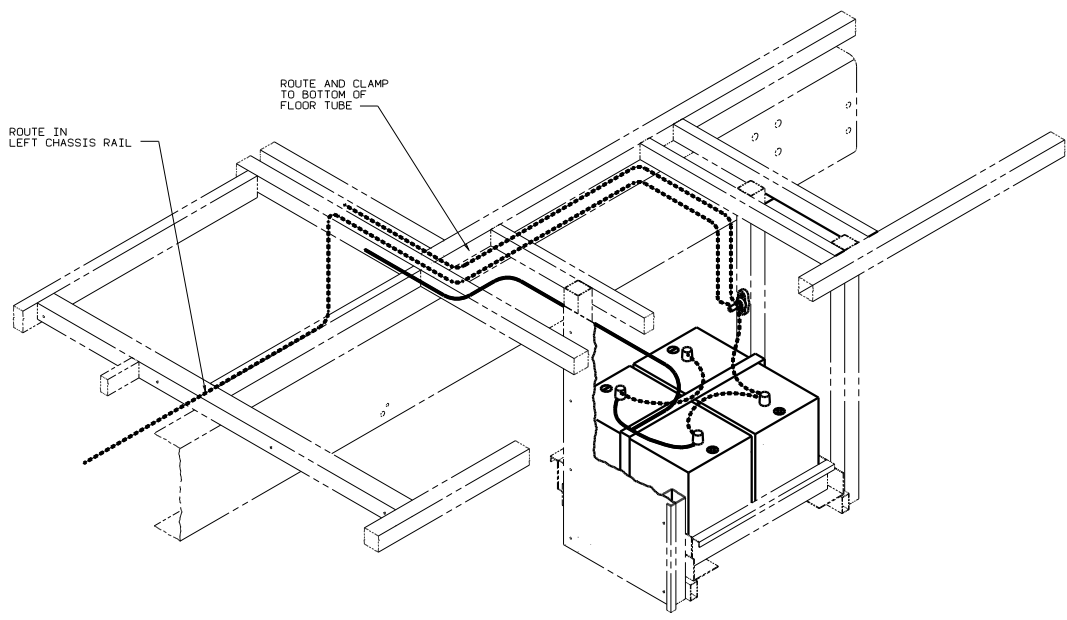


- (1) CUT WIRE AND RECONNECT AS SHOWN.
- (2) REMOVE 6 POSITION WEATHER PACK HOUSING SUPPLIED W/CHASSIS & SEND TO WIRE PREP
- (3) 670 GEN-7.5KW,QUIET DIESEL.
- (4) COIL UP EXCESS CABLE AND TIE WITH 8343-02-000.
- (5) USE AS SUPPLIED.
- (6) SUPPLIED WITH CHASSIS.
- (7) FOR ADDITIONAL INFORMATION, SEE WIRING INSTL FRONT END.
- (8) 39R GEN-6.5KW,MARQUIS,LOUD LP.
- (9) 21V SOUND SYSTEM-DLX.
- (10) CLAMP 10497-03-000, SCREW G11-10-16B.
- (11) ROUTE CABLES BELOW CHASSIS RAIL IN THIS AREA, FOLLOW INSIDE RAIL.
- (12) CLAMP 83610-01-000, SCREW G11-10-16B.
- (13) SECURE CONDUIT 41953-09-000, 41953-10-000 AND 41953-11-000 OVER ALL WIRES IN CONTACT WITH SHARP EDGES.

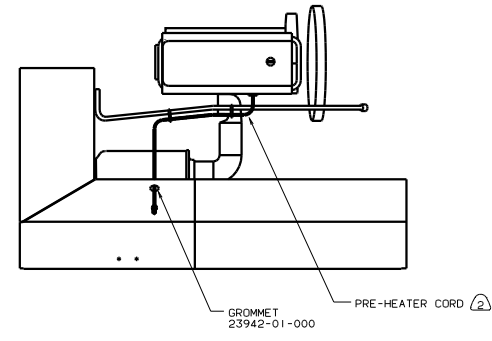
1. LEGEND: — WINNEBAGO WIRING, CABLE, - - - - - SPAR WIRING.

FOR ELECTRICAL TORQUE SPECIFICATIONS SEE DWG NO. 128783-01-000

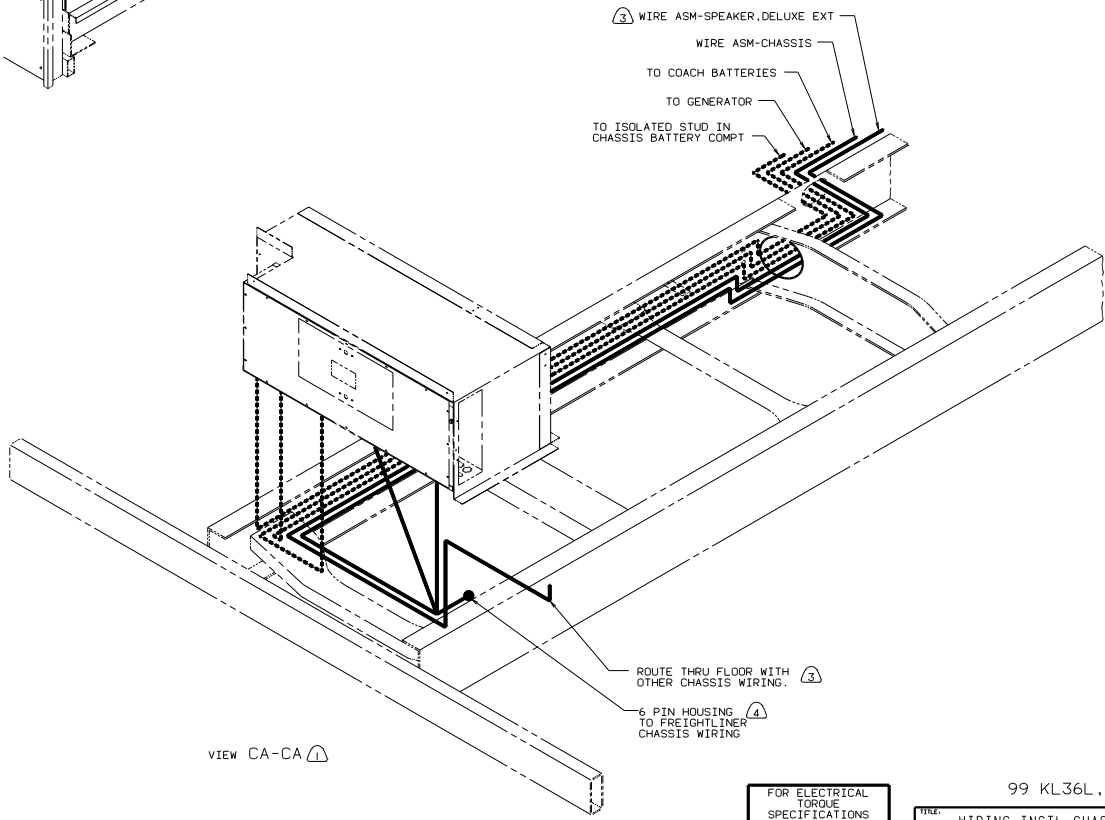
99 1/2 KL36L,PUSHER
 TITLE: WIRING INSTL-CHASSIS
 SHEET 2 OF 4
 130344



VIEW CB-CB



VIEW CC



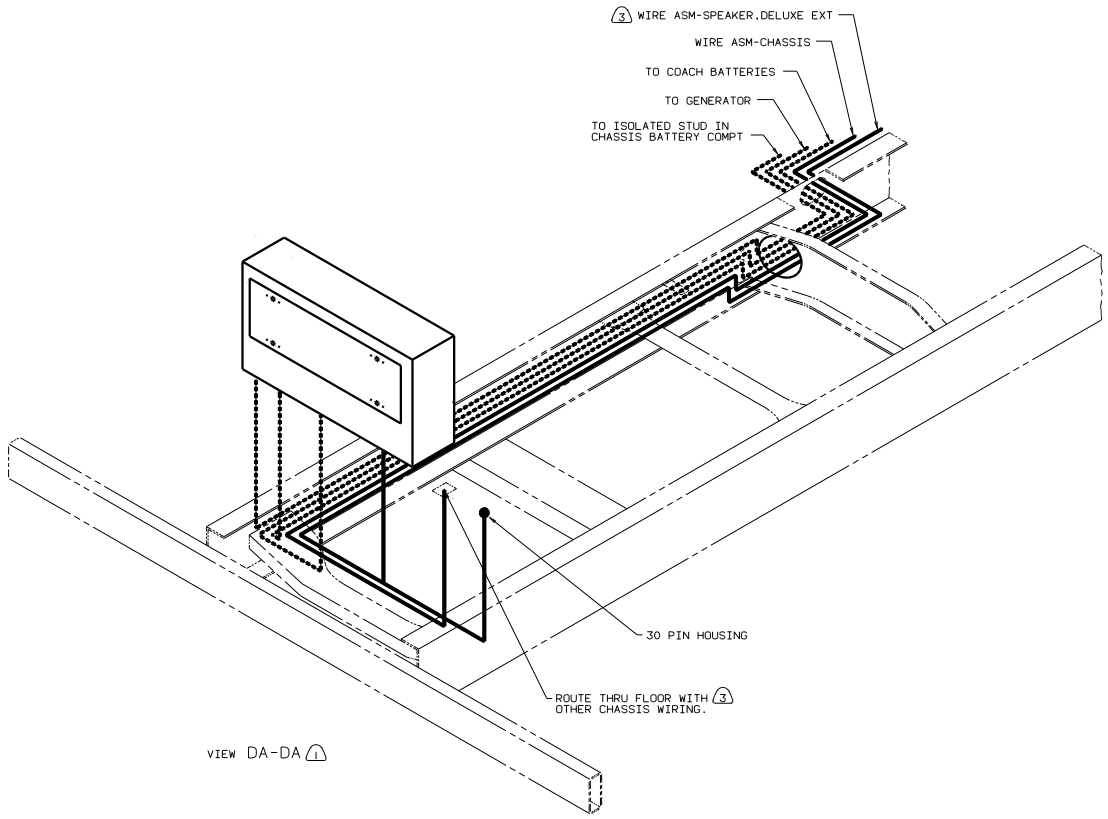
VIEW CA-CA

- ④ REMOVE 6 POSITION WEATHER PACK HOUSING SUPPLIED W/CHASSIS AND SEND TO WIRE PREP.
- ③ 21V SOUND SYSTEM-DLX.
- ② SECURE CORD AWAY FROM ALL MOVING PARTS AND EXHAUST WITH TIE-WIRE 93147-01-000 AS REQUIRED.
- ① SEE WIRING INSTL-FRONT END FOR ADDITIONAL INFORMATION.

NOTES:

FOR ELECTRICAL TORQUE SPECIFICATIONS SEE DWG NO. 128783-01-000

| | | | |
|----------------------|----------|------------------|-----|
| TITLE | | 99 KL36L, PUSHER | |
| WIRING INSTL-CHASSIS | | | |
| 30 | NO SCALE | 16 | 1.6 |
| SHEET 3 OF 4 | | DWG NO 130344 | |



VIEW DA-DA (1)

(1) WIRE ASM-SPEAKER, DELUXE EXT
 WIRE ASM-CHASSIS
 TO COACH BATTERIES
 TO GENERATOR
 TO ISOLATED STUD IN
 CHASSIS BATTERY COMPT

30 PIN HOUSING

ROUTE THRU FLOOR WITH (3)
OTHER CHASSIS WIRING.

- (3) 21V SOUND SYSTEM-DLX.
- (2) SECURE CORD AWAY FROM ALL MOVING PARTS AND EXHAUST WITH TIE-WIRE 93147-01-000 AS REQUIRED.
- (1) SEE WIRING INSTL-FRONT END FOR ADDITIONAL INFORMATION.

NOTES:

FOR ELECTRICAL
 TORQUE
 SPECIFICATIONS
 SEE DWG NO.
 128783-01-000

99 1/2 KL36L, PUSHER

TITLE: WIRING INSTL-CHASSIS
 SHEET 4 OF 4