



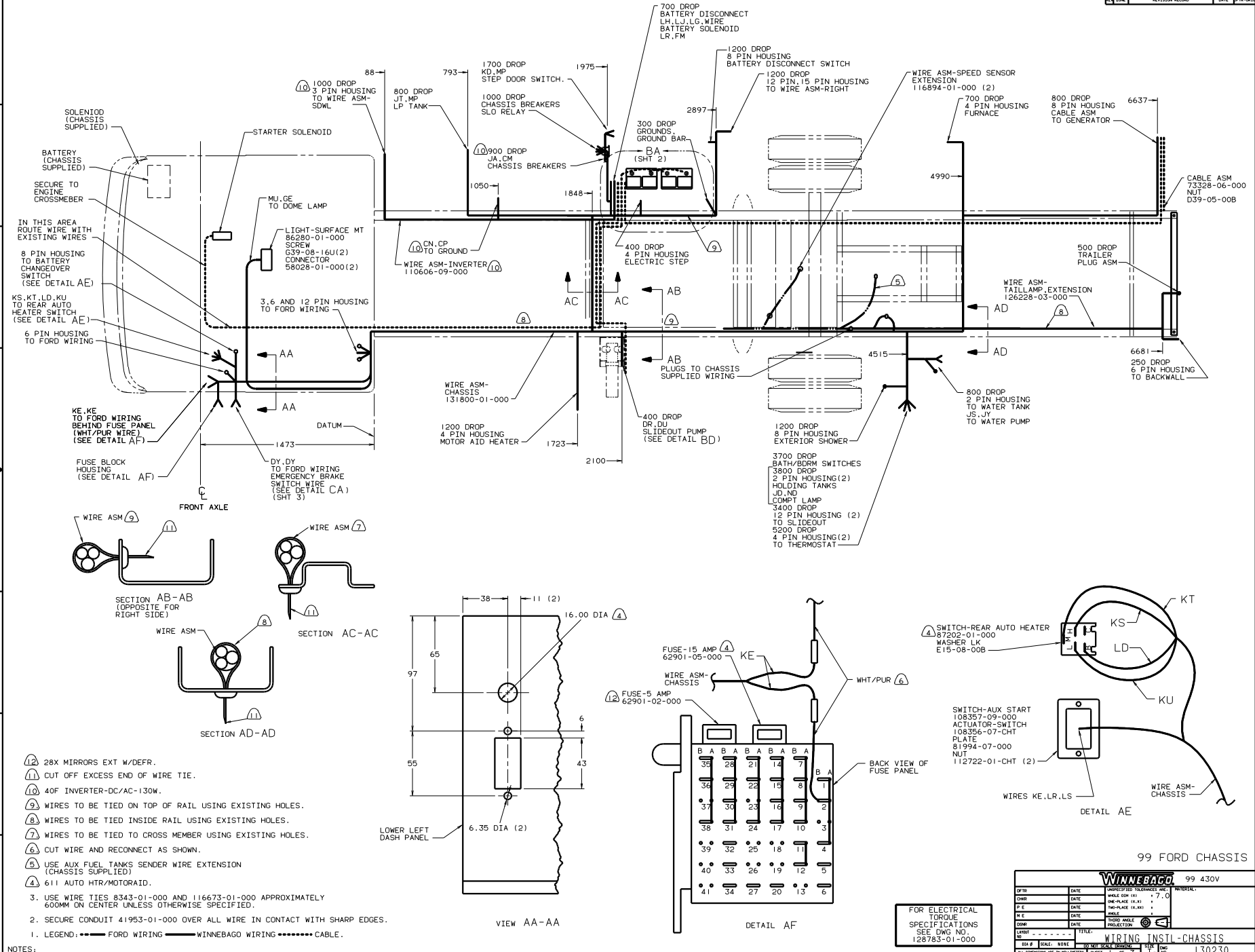
**DANGER**

**Danger of electrical shock, burns or death.** Always remove all power sources before attempting any repair, service or diagnostic work. Power can be present from shore power, generator, inverter or battery. All power sources must be disabled and secured before performing any service.

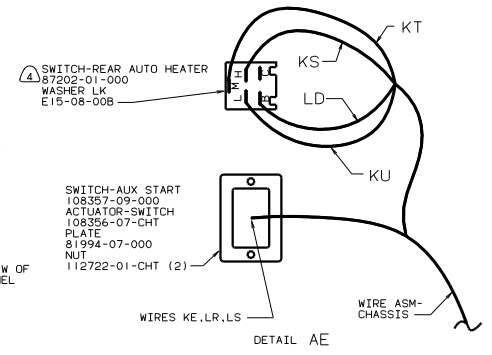
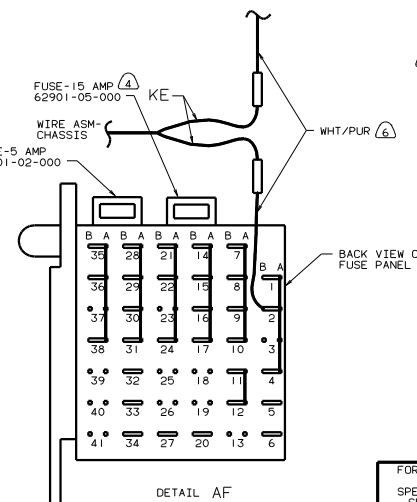
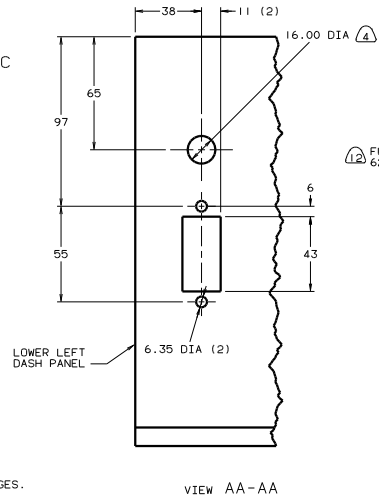
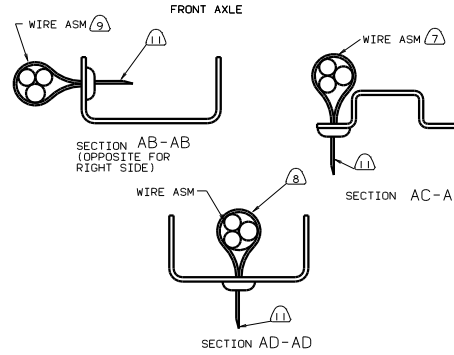


**CAUTION**

If you lack the skills, tools or equipment to perform diagnostic or repair work leave such work to an authorized Winnebago Industries dealer or other qualified shop.



NOTES:  
 1. LEGEND: ●●● FORD WIRING — WINNEBAGO WIRING ..... CABLE.  
 2. SECURE CONDUIT 41953-01-000 OVER ALL WIRE IN CONTACT WITH SHARP EDGES.  
 3. USE WIRE TIES 8343-01-000 AND 116673-01-000 APPROXIMATELY 600MM ON CENTER UNLESS OTHERWISE SPECIFIED.



FOR ELECTRICAL TORQUE SPECIFICATIONS SEE DWG NO. 128783-01-000

99 FORD CHASSIS 99 430V

REV	DATE	UNSPECIFIED TOLERANCES ARE:	INT.
CHP	DATE	FRAC-PLS (1:1)	7.0
DFE	DATE	FRAC-PLS (1:10)	
DVE	DATE	FRAC-PLS (1:100)	
COMB	DATE	FRAC-PLS (1:1000)	

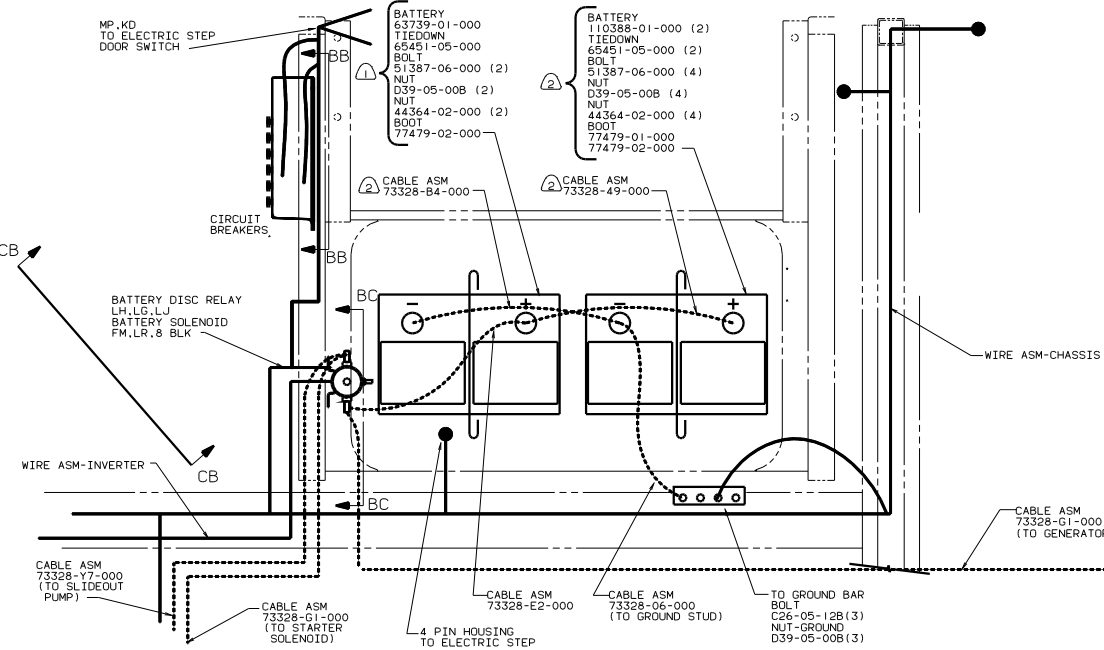
WINNEBAGO

WIRING INSTL-CHASSIS

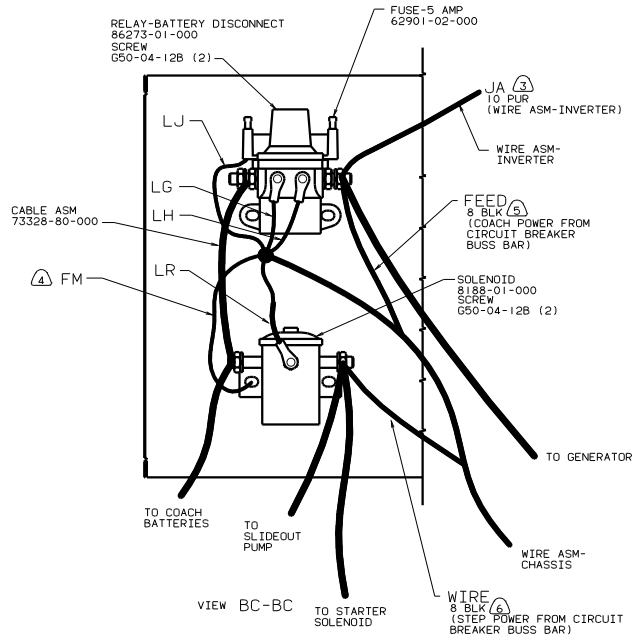
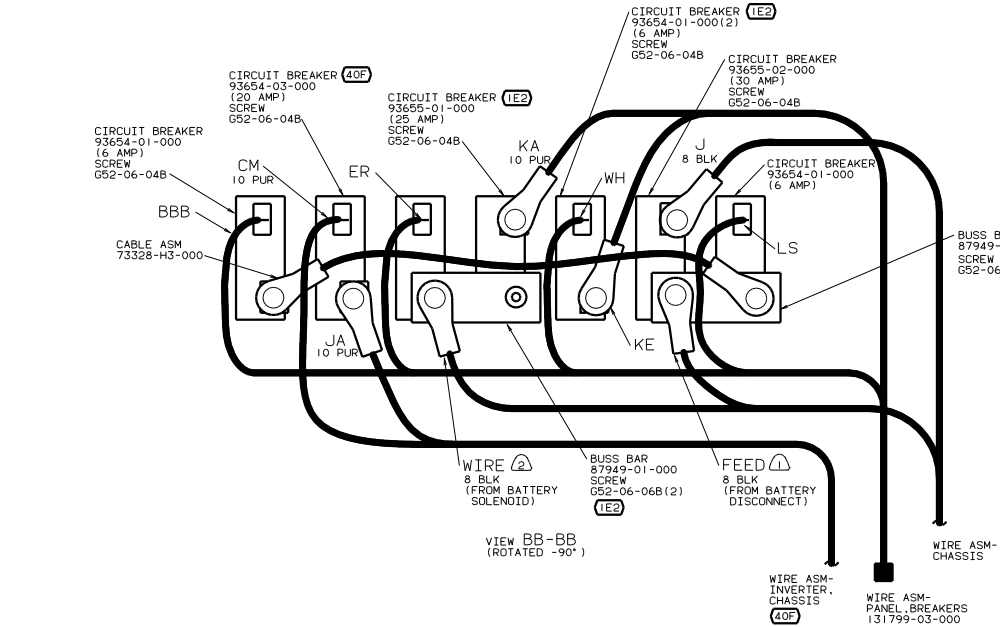
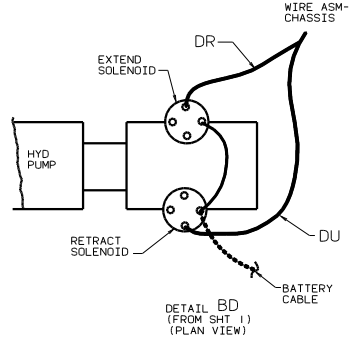
SHEET 1 OF 3

REF: 125474

130230



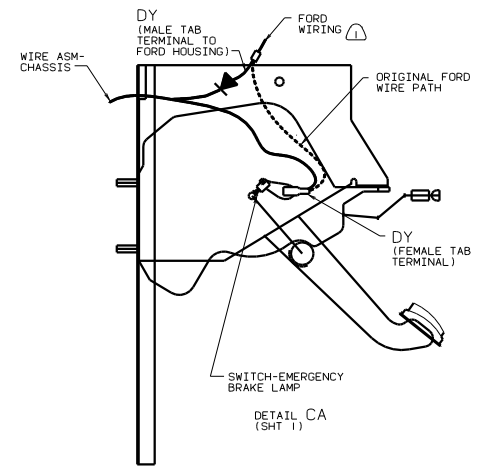
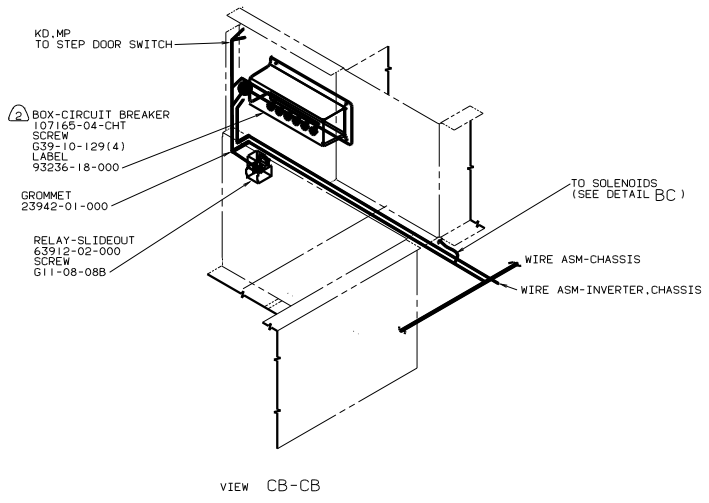
DETAIL BA



- NOTES:
- ③ 40F INVERTER-DC/AC, 130W.
  - ② 22W. BATTERY TWO.
  - ① 12X. BATTERY ONE.
  - ④ LEAD IS MARKED WITH YELLOW TAPE.
  - ⑤ LEAD IS MARKED WITH RED TAPE.
  - ④ SECURE WITH SOLENOID MOUNTING SCREW.

FOR ELECTRICAL TORQUE SPECIFICATIONS SEE DWG NO. 128783-01-000

99 430V	
TITLE	WIRING INSTL-CHASSIS
NO. OF SHEETS	3
SHEET NO.	2
DATE	1.6
DRW NO.	130230



DISCONNECT FORD WIRING FROM THE PARK BRAKE INDICATOR SWITCH.  
RECONNECT CIRCUIT 'DY' AS SHOWN.

FOR ELECTRICAL TORQUE SPECIFICATIONS SEE DWG NO. 128783-01-000

TITLE: WIRING INSTL-CHASSIS		99 430V	
30 DAY SCALE DRAWING	1/8" = 1"	1/8" = 1"	130230
SHEET 3 OF 3	1/8" = 1"	1/8" = 1"	130230