



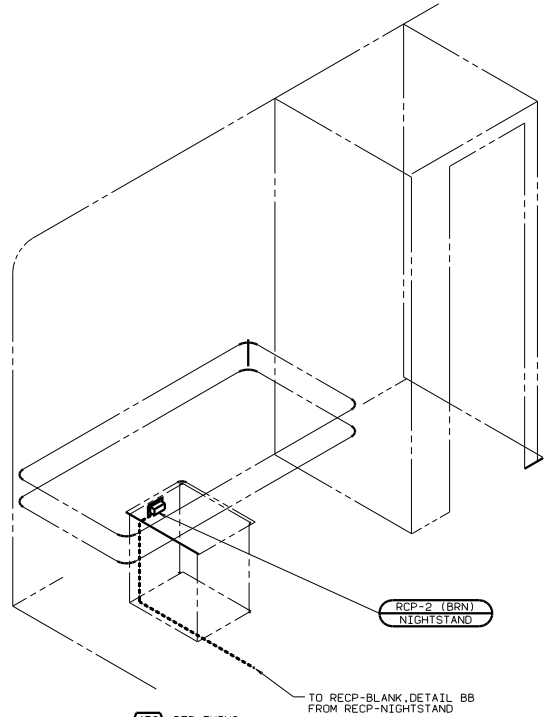
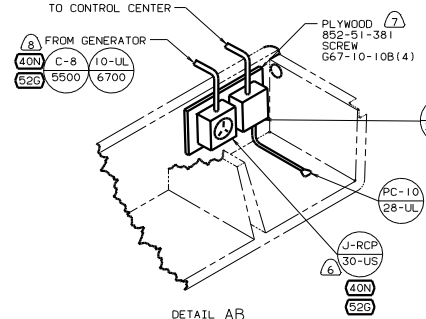
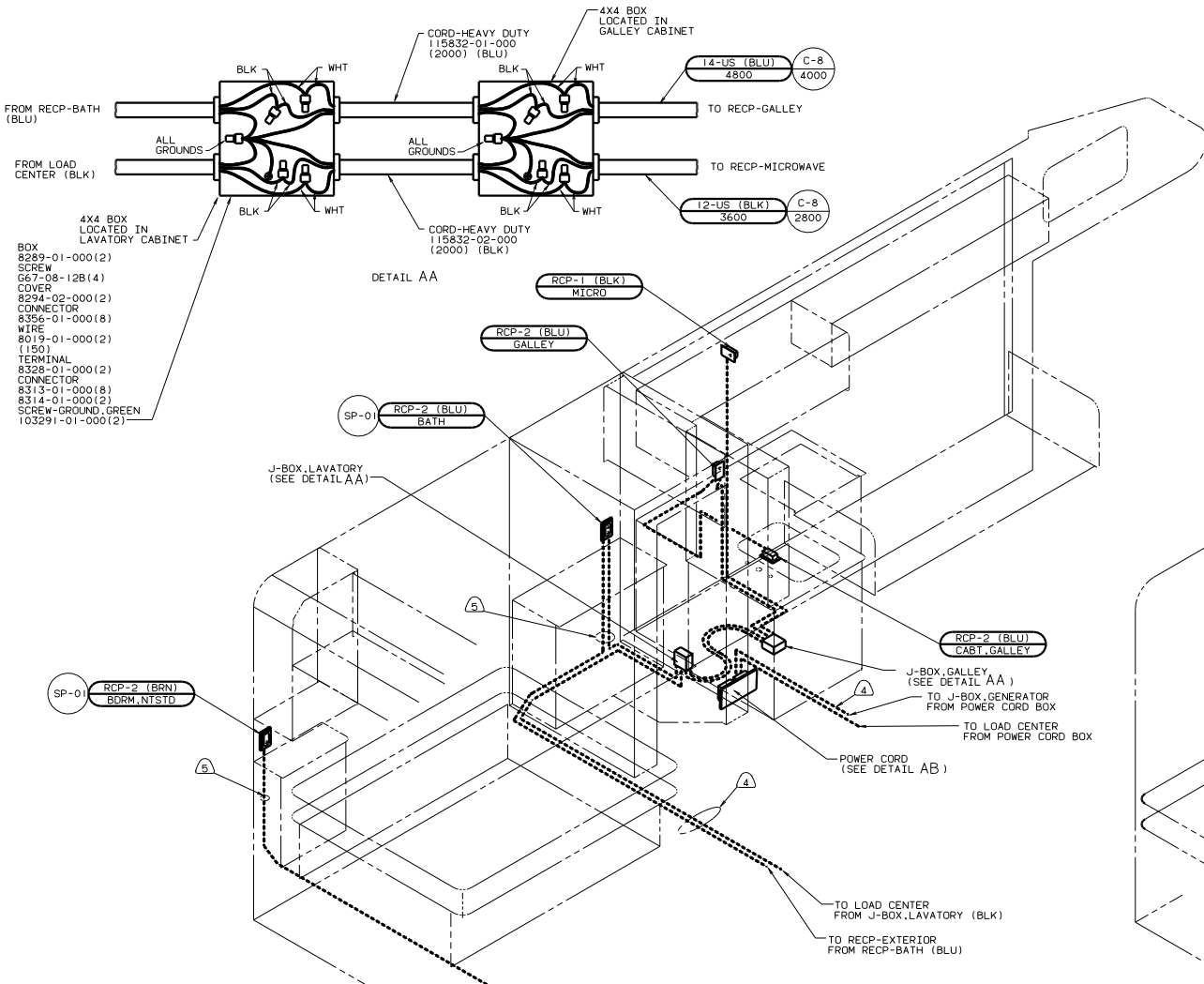
DANGER

Danger of electrical shock, burns or death. Always remove all power sources before attempting any repair, service or diagnostic work. Power can be present from shore power, generator, inverter or battery. All power sources must be disabled and secured before performing any service.



CAUTION

If you lack the skills, tools or equipment to perform diagnostic or repair work leave such work to an authorized Winnebago Industries dealer or other qualified shop.



- 4X4 BOX LOCATED IN LAVATORY CABINET
- BOX 8289-01-000(2)
 - SCREW 667-08-12B(4)
 - COVER 8294-02-000(2)
 - CONNECTOR 8356-01-000(8)
 - WIRE 8013-01-000(2)
 - (150)
 - TERMINAL 8328-01-000(2)
 - CONNECTOR 8313-01-000(8)
 - 8314-01-000(2)
 - SCREW-GROUND, GREEN 103291-01-000(2)

DETAIL AA

49X BED-QUEEN-BACKWALL

45G BED-TWINS

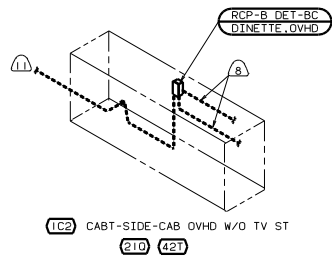
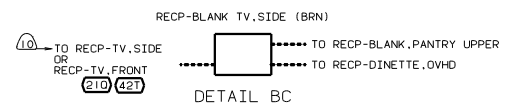
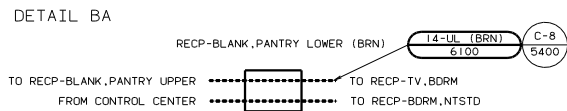
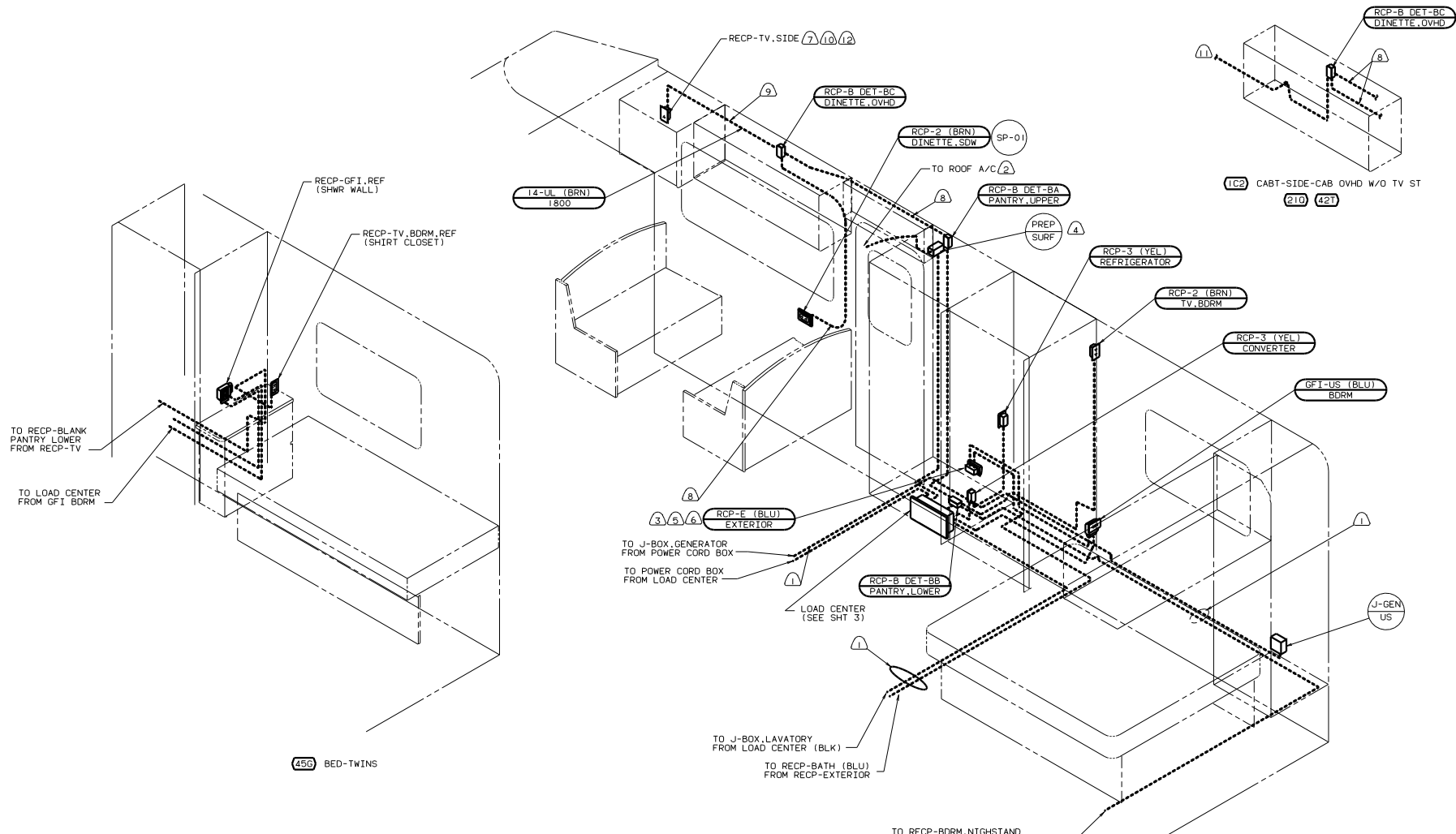
- NOTES:
1. ALL WIRES TO BE CLAMPED WITH CLAMP 10495-01-000 OR CLIP 80734-01-000 EVERY 600. USE SCREW 667-10-12B UNLESS OTHERWISE SPECIFIED.
 2. ALL 110V WIRES ARE TO BE CLAMPED WITH CLAMP 10497-01-000 WITHIN 200 OF OUTLET BOXES. USE SCREW 667-10-12B.
 3. ALL GROUND WIRES TO BE COVERED WITH TUBING 8041-02-000.
- (8) SEE GENERATOR INSTL- FOR ADDITIONAL INFORMATION.
 (7) PAINT EXPOSED SURFACES BLACK WITH 106112-01-000.
 (6) INSTALL RECEPTACLE WITH GROUND TOWARD FRONT OF VEHICLE.
 (5) ROUTE WIRE THRU SIDEWALL.
 (4) ROUTE WIRE THRU FLOOR.

- 52G GEN-3.6KW ONAN LP
- 49X BED-QUEEN-BACKWALL
- 45G BED-TWINS
- 40N GEN-4.0KW-ONAN-GAS-MICROLITE
- 1B1 CODES STANDARDS/USA
- 12B ELECTRICAL SYSTEM 30 AMP

WINNEBAGO 99 430V

OF IT	DATE	UNSPECIFIED TOLERANCES ARE:
CHP	DATE	WHOLE OR 1/16"
PIE	DATE	ONE-PLACE (1/32)
PIE	DATE	TWO-PLACE (1/64)
COM	DATE	THREE-PLACE (1/128)

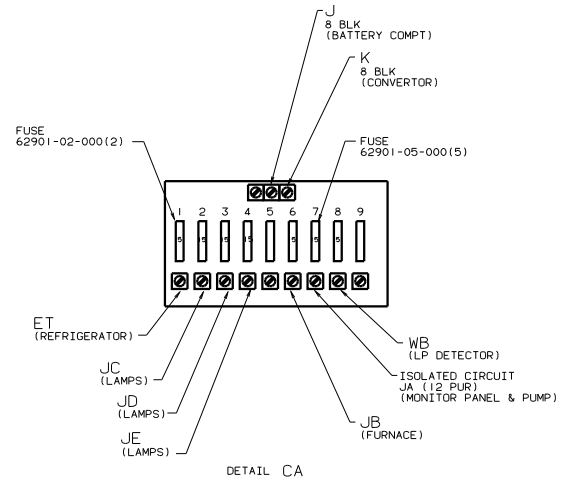
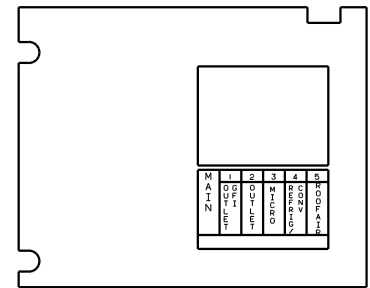
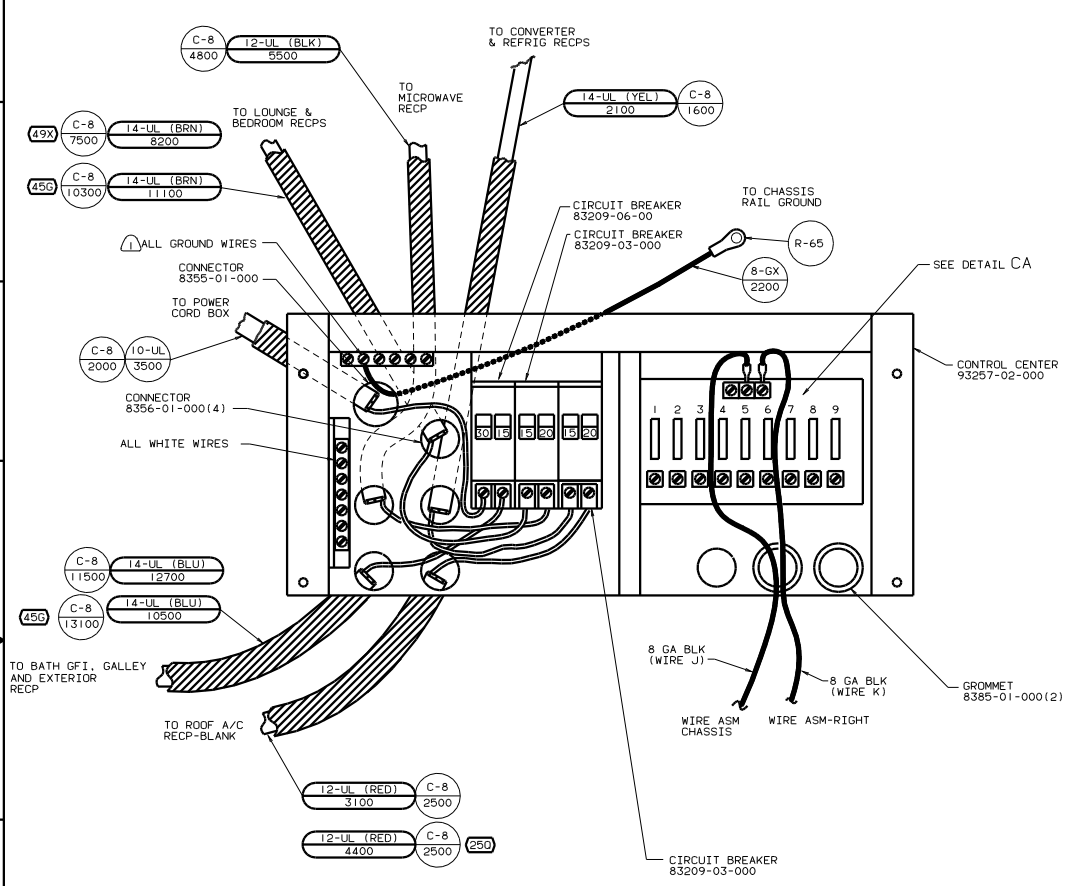
TITLE: WIRING INSTL-BODY (110130US)
 SHEET 1 OF 11
 130225



- NOTES:
- ⑫ NOT USED WITH 210 421
 - ①① SEE WIRING INSTL-TV/VCR FRONT FOR ADDITIONAL INFORMATION.
 - ⑩⑩ NOT USED WITH 78A
 - ⑨⑨ ROUTE WIRE THRU SIDEWALL.
 - ⑧⑧ WIRE ROUTED IN SIDEWALL.
 - ⑦⑦ SEE WIRING INSTL-TV/VCR, SIDE FOR ADDITIONAL INFORMATION.
 - ⑥⑥ NOT USED WITH 76C
 - ⑤⑤ SEE ENT CTR INSTL-EXT FOR ADDITIONAL INFORMATION.
 - ④④ NOT USED WITH 250
 - ③③ SEAL BACK SIDE OF RECP FACE.
 - ②② ROUTE WIRE THRU ROOF.
 - ①① ROUTE WIRE THRU FLOOR.

- ④9X BED-QUEEN-BACKWALL
- ④5G BED-TWINS
- ⑦6C ENTERTAINMENT CTR/EXT CSETTE
- ②50 A/C ROOF AIR (1) 14.800 BTU
- ⑦8A TV-13" WITH VCP 12V
- ④21 TV-19" FRONT & SWITCHING SYS
- ②10 TV-19" W/VCR/SWITCHING SYS
- ①02 CABT-SIDE-CAB OVHD W/O TV ST
- ①01 CABINET-SIDE W/O TV STORAGE
- ①81 CODES STANDARDS/USA
- ①20 ELECTRICAL SYSTEM 30 AMP

99 430V ①81 ①20



NOTES: ALL GROUND WIRES TO BE COVERED WITH TUBING 8041-02-000.

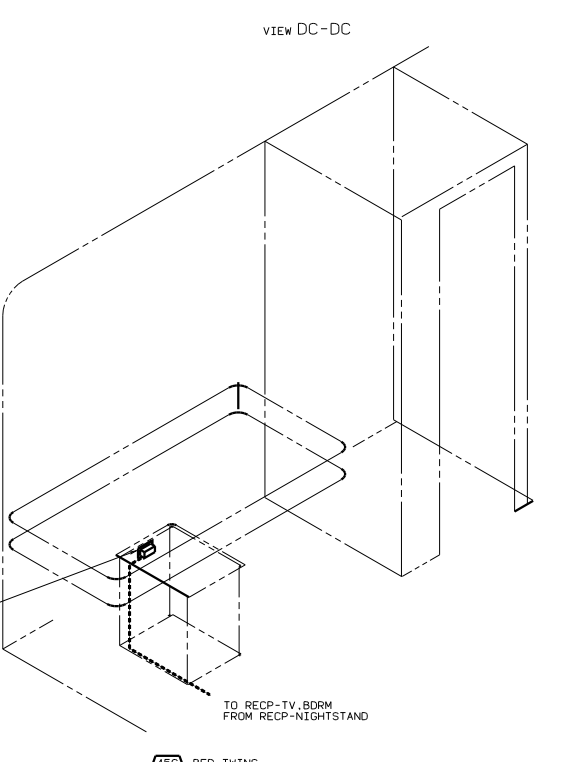
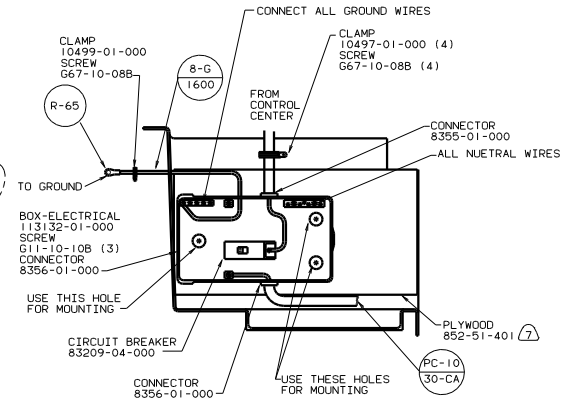
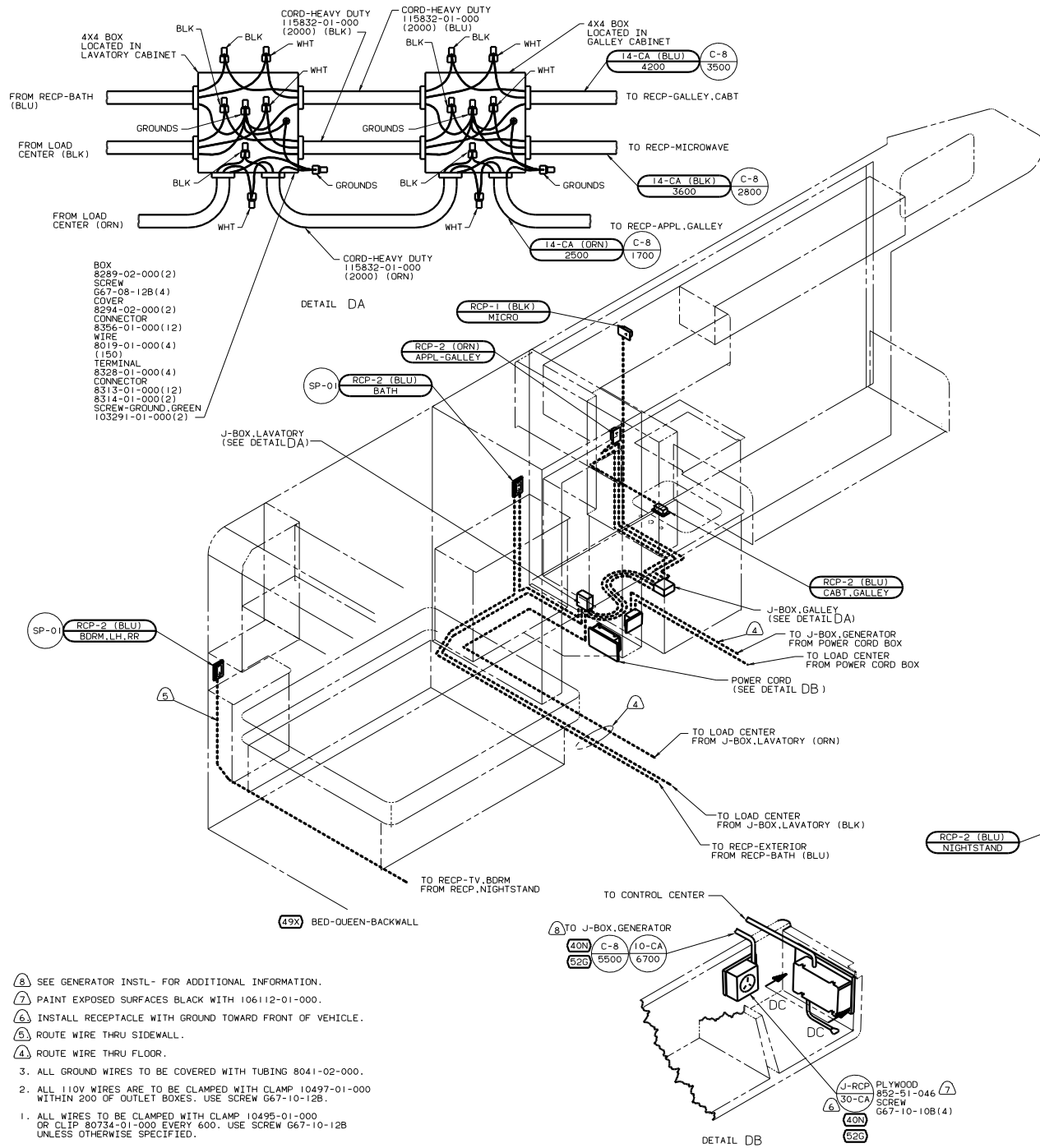
FOR ELECTRICAL TORQUE SPECIFICATIONS SEE DWG NO. 128783-01-000

FOR ELECTRICAL CALLOUTS SEE DWG NO. 121339-01-000

- BED-QUEEN-BACKWALL
- BED-TWINS
- A/C ROOF AIR (1) 14.800 BTU
- CODES STANDARDS/USA
- ELECTRICAL SYSTEM 30 AMP

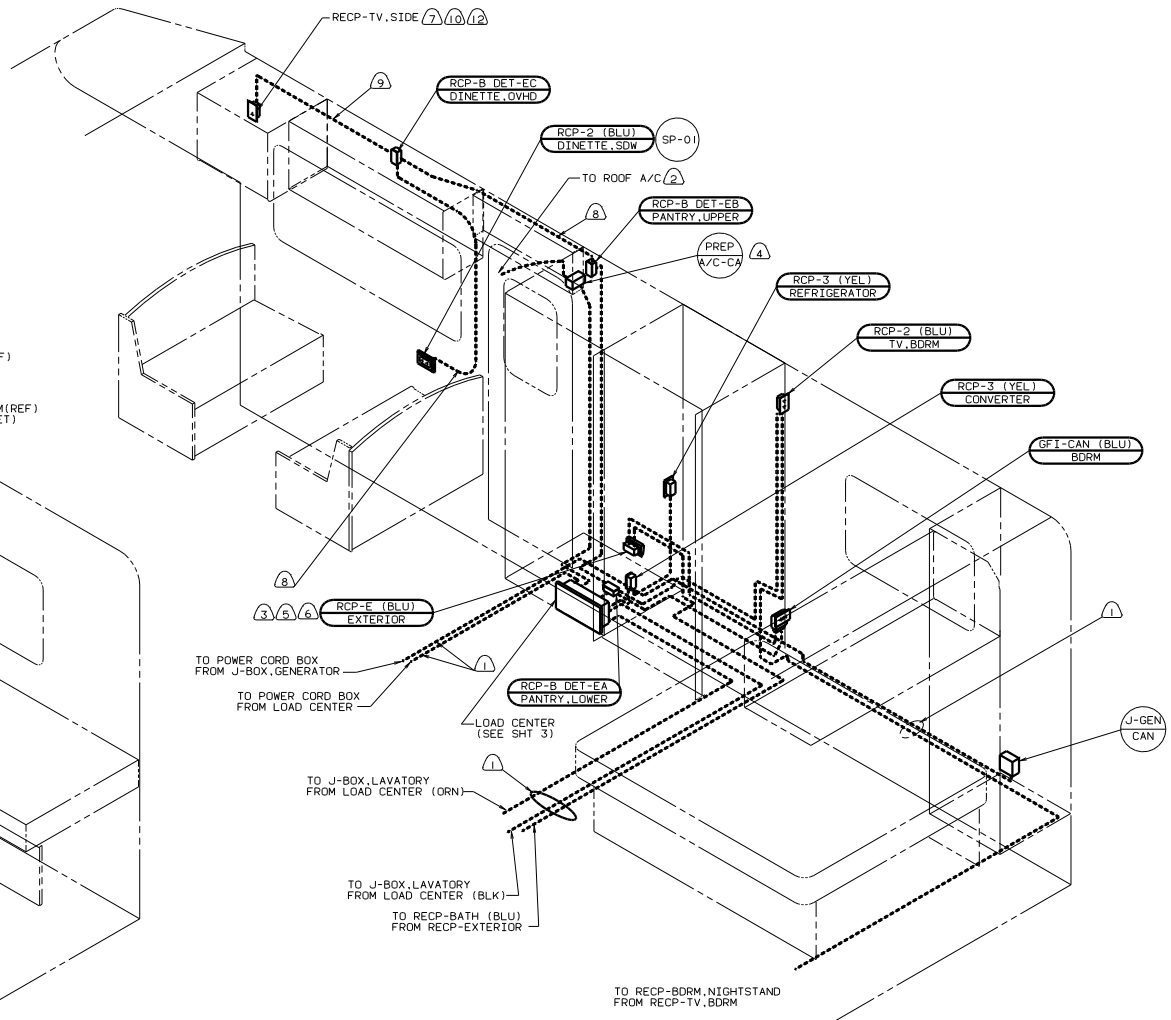
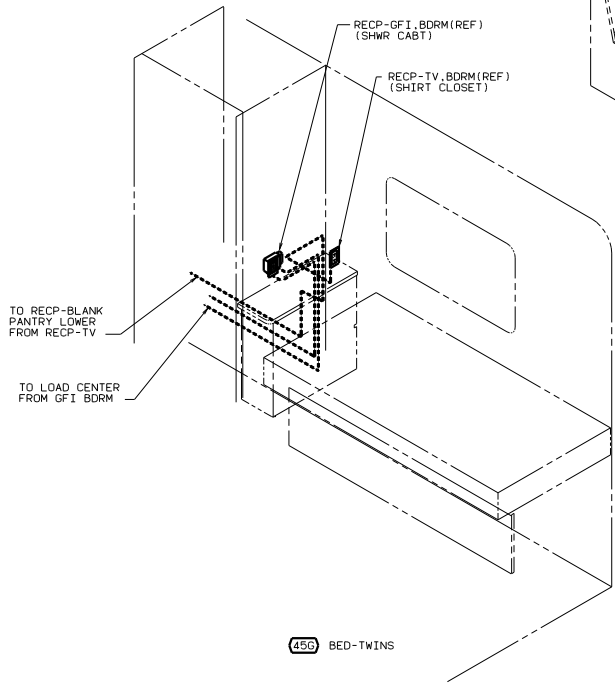
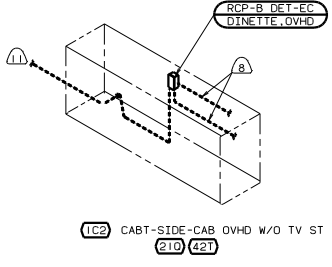
99 430V

FILE: WIRING INSTL-BODY(30 CC USA)
SHEET 3 OF 11

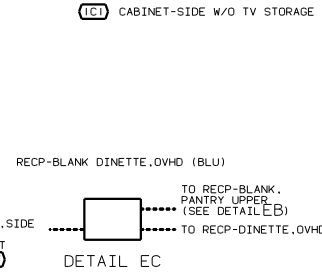
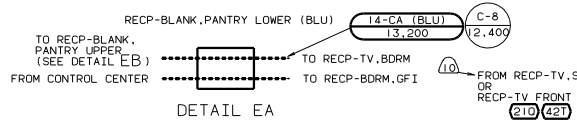
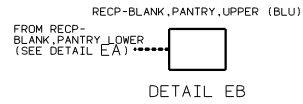


- NOTES:**
- 1. ALL WIRES TO BE CLAMPED WITH CLAMP 10495-01-000 OR CLIP 80734-01-000 EVERY 600. USE SCREW 667-10-12B UNLESS OTHERWISE SPECIFIED.
 - 2. ALL 110V WIRES ARE TO BE CLAMPED WITH CLAMP 10497-01-000 WITHIN 200 OF OUTLET BOXES. USE SCREW 667-10-12B.
 - 3. ALL GROUND WIRES TO BE COVERED WITH TUBING 8041-02-000.
 - 4. ROUTE WIRE THRU FLOOR.
 - 5. ROUTE WIRE THRU SIDEWALL.
 - 6. INSTALL RECEPTACLE WITH GROUND TOWARD FRONT OF VEHICLE.
 - 7. PAINT EXPOSED SURFACES BLACK WITH 106112-01-000.
 - 8. SEE GENERATOR INSTL- FOR ADDITIONAL INFORMATION.

- 52B GEN-3.6KW ONAN LP
- 49X BED-QUEEN-BACKWALL
- 45B BED-TWINS
- 40N GEN-4.0KW-ONAN-GAS-MICROLITE
- 26B CODES/STANDARDS-CSA/CMVSS
- 12D ELECTRICAL SYSTEM 30 AMP

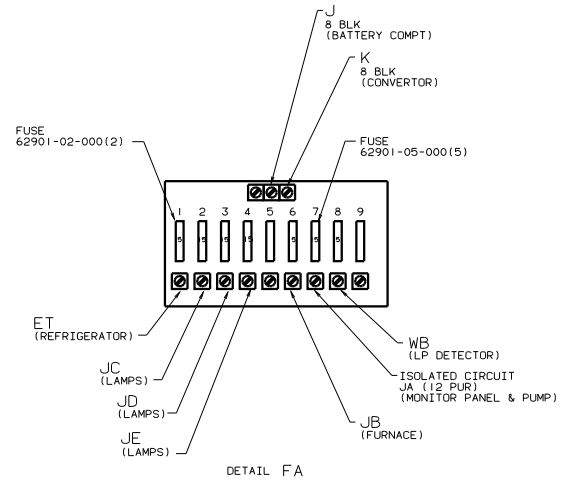
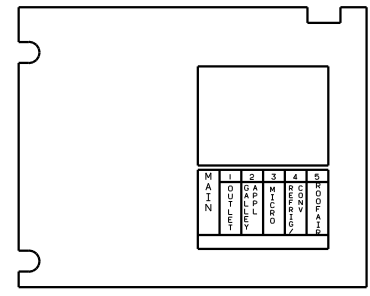
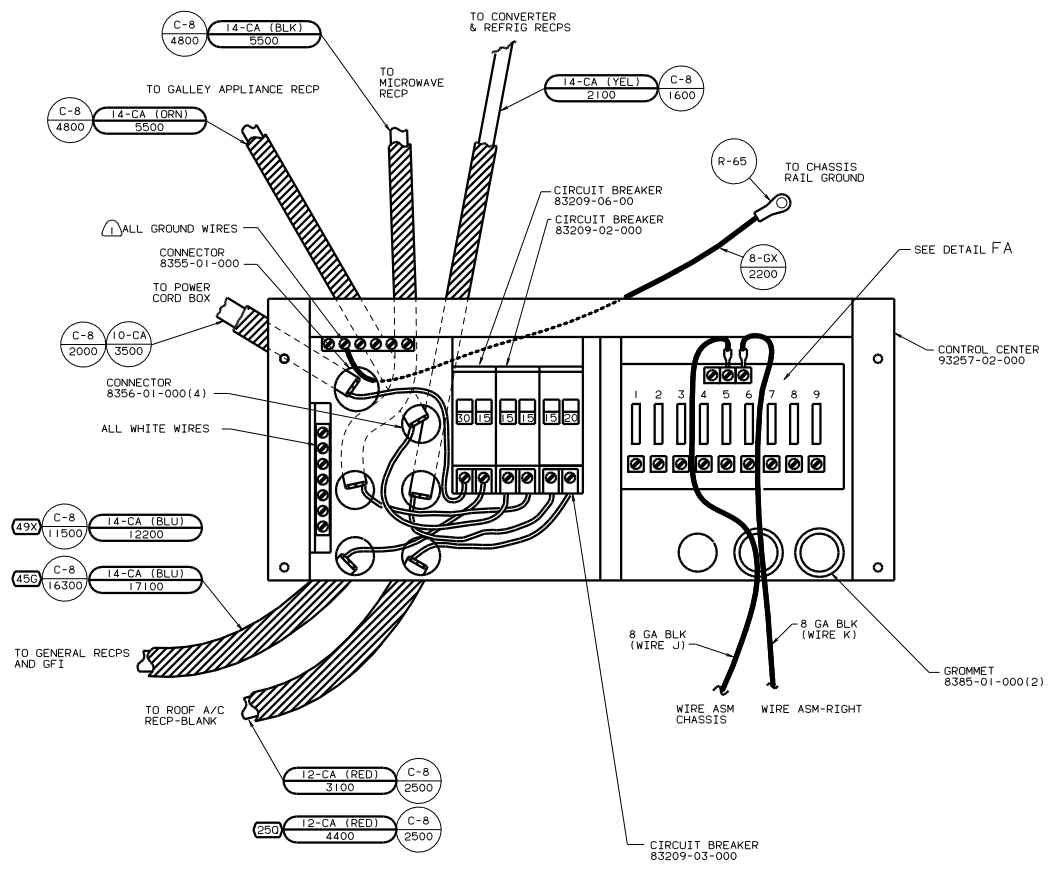


- NOT USED WITH (210) (421)
- SEE WIRING INSTL-TV/VCR FRONT FOR ADDITIONAL INFORMATION.
- NOT USED WITH (78A)
- ROUTE WIRE THRU SIDEWALL.
- WIRE ROUTED IN SIDEWALL.
- SEE WIRING INSTL-TV/VCR, SIDE FOR ADDITIONAL INFORMATION.
- NOT USED WITH (76C)
- SEE ENT CTR INSTL-EXT FOR ADDITIONAL INFORMATION.
- NOT USED WITH (250)
- SEAL BACK SIDE OF RECP FACE.
- ROUTE WIRE THRU ROOF.
- ROUTE WIRE THRU FLOOR.



- (78A) TV-13" WITH VCP 12V
- (76C) ENTERTAINMENT CTR/EXT CSETTE
- (49X) BED-QUEEN-BACKWALL
- (456) BED-TWINS
- (421) TV-19" FRONT & SWITCHING SYS
- (285) CODES/STANDARDS-CSA/CMVSS
- (250) A/C ROOF AIR (1) 14,800 BTU
- (210) TV-19" W/VCR/SWITCHING SYS
- (122) CABT-SIDE-CAB OVHD W/O TV ST
- (121) CABINET-SIDE W/O TV STORAGE
- (120) ELECTRICAL SYSTEM 30 AMP

99 430V (120) (265)



⚠ ALL GROUND WIRES TO BE COVERED WITH TUBING 8041-02-000.

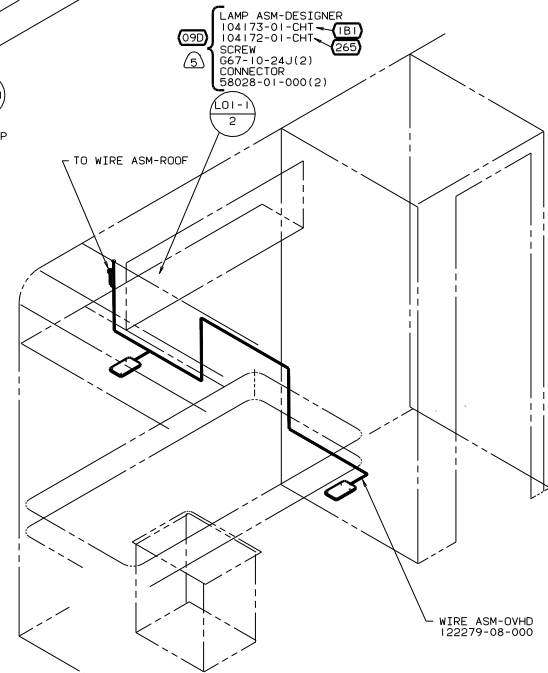
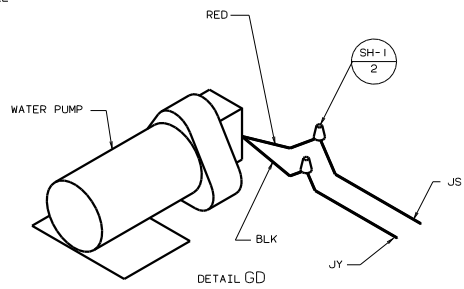
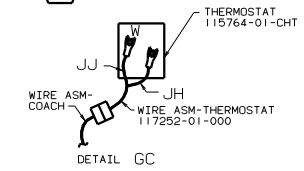
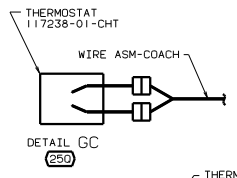
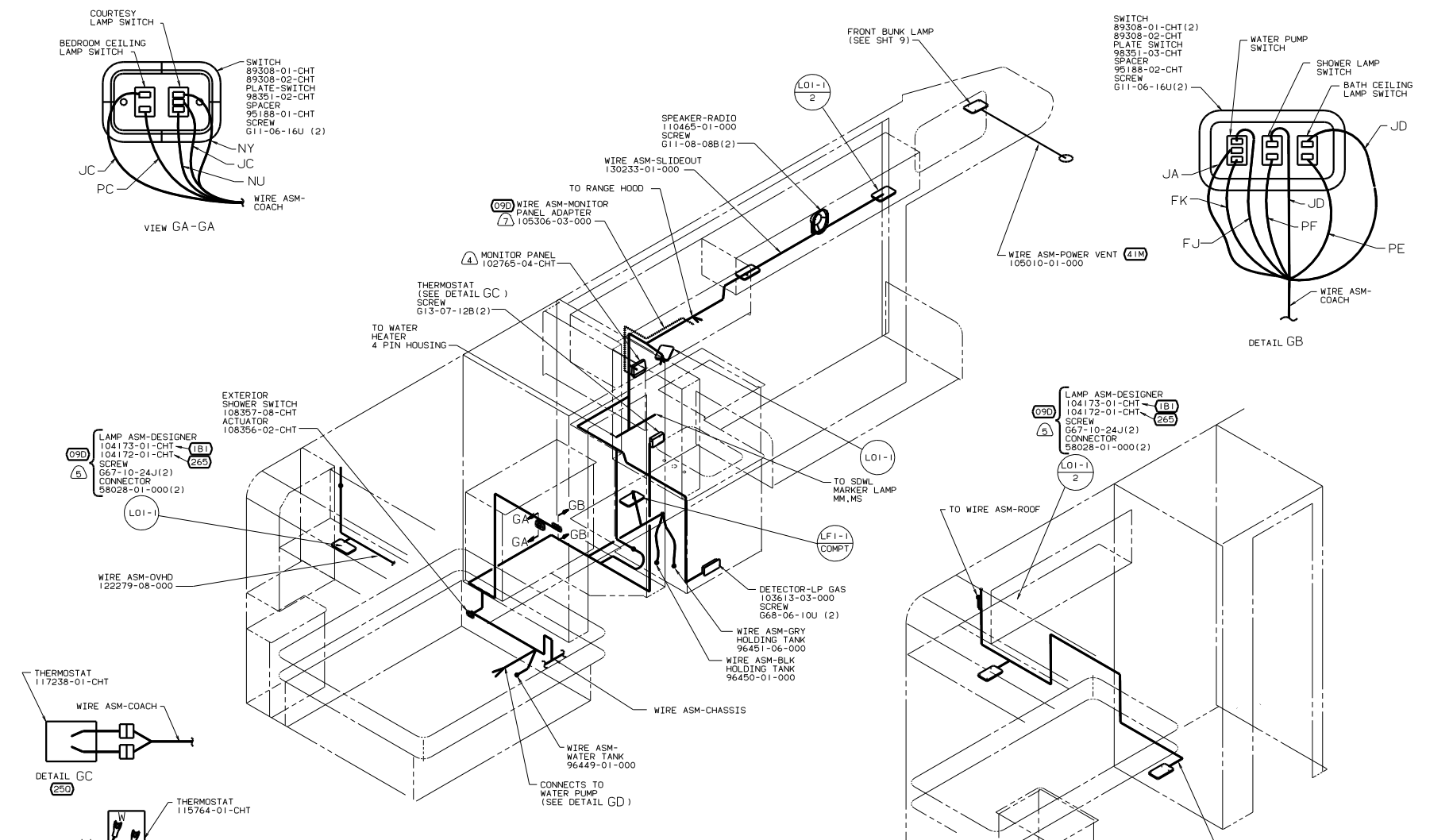
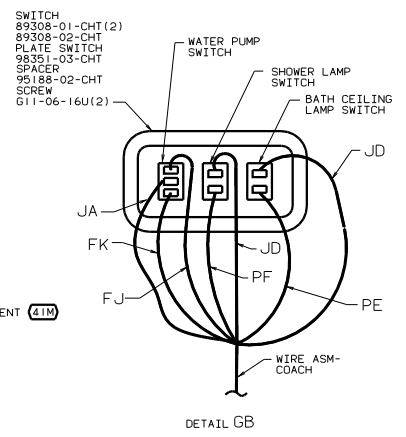
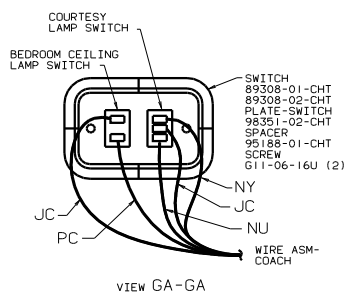
FOR ELECTRICAL TORQUE SPECIFICATIONS SEE DWG NO. 128783-01-000

FOR ELECTRICAL CALLOUTS SEE DWG NO. 121339-01-000

- (49X) BED-QUEEN-BACKWALL
- (45G) BED-TWINS
- (265) CODES/STANDARDS-CSA/CMVSS
- (250) A/C ROOF AIR (1) 14,800 BTU
- (120) ELECTRICAL SYSTEM 30 AMP

99 430V (120)(265)

FILE WIRING INSTL-BODY(30 CC CAN)
 SHEET 6 OF 11
 130225

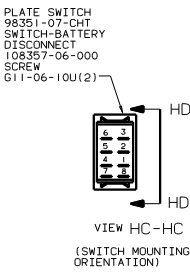
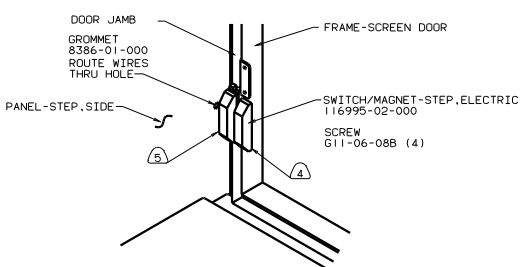


- NOTES:
- 7) DASHED LINES REPRESENT ROUTING FOR ADAPTER.
 - 6) WINNEBAGO
 - 5) ITASCA
 - 4) NOT USED WITH 09D
3. ALL GROUND WIRES TO BE COVERED WITH TUBING 8041-02-000.
2. ALL 110V WIRES ARE TO BE CLAMPED WITH CLAMP 10497-01-000 WITHIN 200 OF OUTLET BOXES. USE SCREW G67-10-12B.
1. ALL WIRES TO BE CLAMPED WITH CLAMP 10495-01-000 OR CLIP 80734-01-000 EVERY 600. USE SCREW G67-10-12B UNLESS OTHERWISE SPECIFIED.

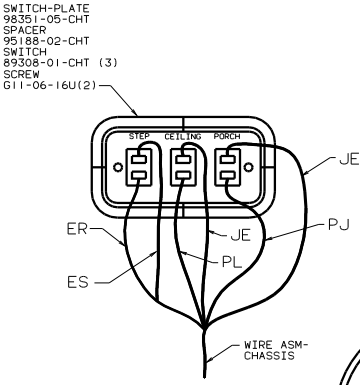
- 41M VENT-PWR VENTILATOR
- 09D DELUXE UPGRADE PACKAGE
- 250 A/C ROOF AIR (1) 14,800 BTU
- 265 CODES/STANDARDS-CMA/CMVSS
- 1B1 CODES STANDARDS-USA

99 430V 1B1 265

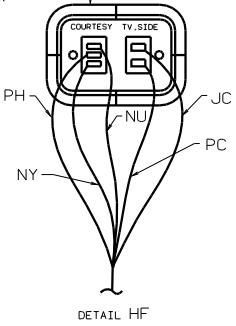
DATE	REV	BY	CHK
10/10/00	1	JL	1
TITLE: WIRING INSTL-BODY (12 L)			
SHEET 7 OF 11			
130225			



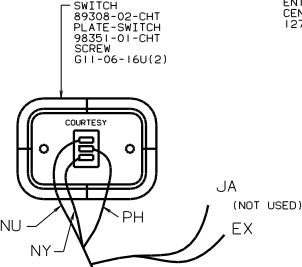
DETAIL HE 1E2



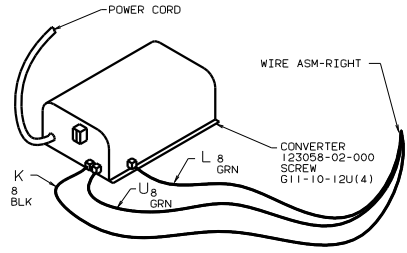
DETAIL HB



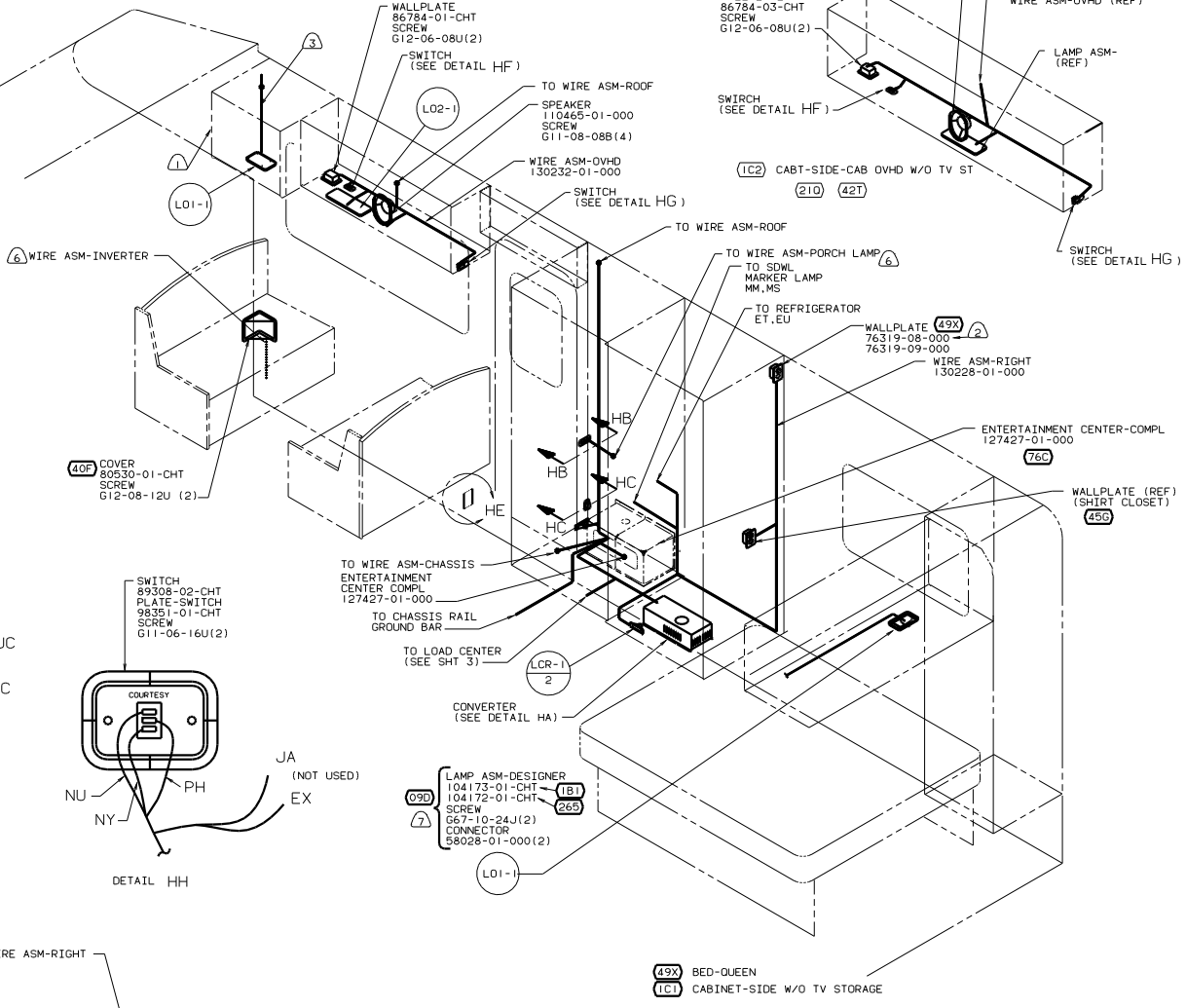
DETAIL HF



DETAIL HH

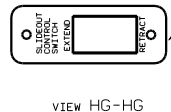


DETAIL HA



- 8 WINNEBAGO
7 ITASCA
6 WIRE ROUTED IN SIDEWALL.
5 MOUNT SWITCH AND SPACER TO BLOCK ON JAMB. ADJUST HEIGHT TO MATCH MAGNET.
4 MOUNT MAGNET USING PILOT HOLES IN SCREW DOOR FRAME. MOUNT WITH MAGNET TOWARD SWITCH.
3 SEE CABT ASM-TV FOR ADDITIONAL INFORMATION.
2 DECORATIVE PANELING.
1 SEE WIRING INSTL-TV/VCR, SIDE FOR ADDITIONAL INFORMATION.

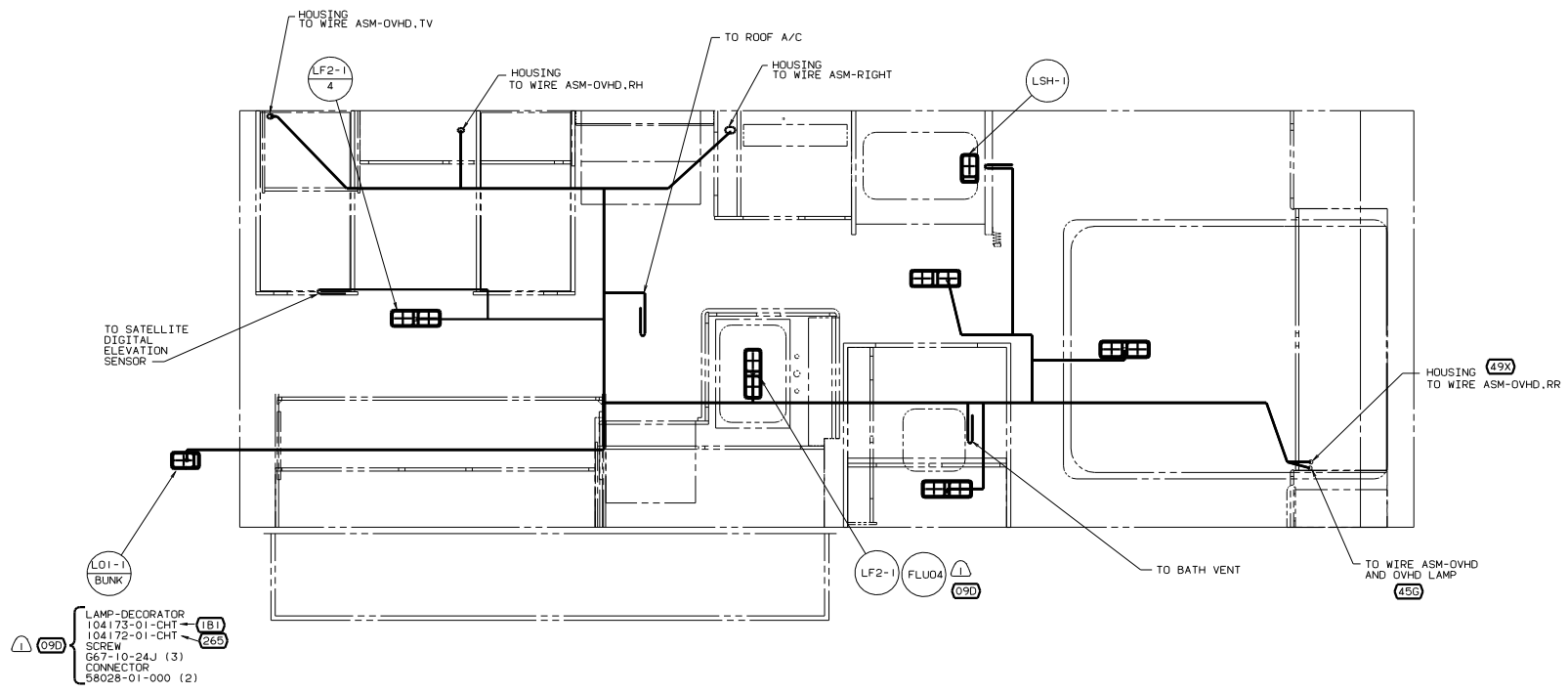
WARNING! DISCONNECT POWER TO THE UNIT BEFORE ATTEMPTING TO SERVICE THE UNIT. ALWAYS USE PROPER SAFETY PROCEDURES.



VIEW HC-HG

- 1E2 ENTRANCE STEP-ELEC.
40F INVERTER-DC/AC 130W
40P DELUXE Upgrade PACKAGE
1C2 CABT-SIDE-CAB OVHD W/O TV ST
1E1 CABINET-SIDE W/O TV STORAGE
1B1 CODES STANDARDS/USA
265 CODES/STANDARDS-CSA/CMVSS
42T TV-19" FRONT & SWITCHING SYS
21C TV-19" W/VCR/SWITCHING SYS
76C ENTERTAINMENT CTR/EXT CSETTE
250 A/C ROOF AIR (1) 14,800 BTU

99 430V (1B1)(265)



- ⚠ 09D
- ⚠ 1B1
- ⚠ 265
- LAMP-DECORATOR 104173-01-CHT
- 104172-01-CHT
- SCREW G67-10-24J (3)
- CONNECTOR 58028-01-000 (2)

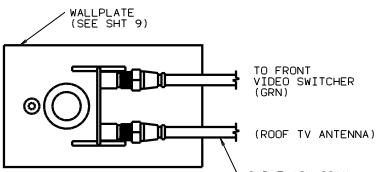
- 49X BED-QUEEN-BACKWALL
- 45G BED-TWINS
- 265 CODES/STANDARDS-CSA/CMVSS
- 1B1 CODES STANDARDS/USA
- 09D DELUXE UPGRADE PACKAGE

3. SEE ROOF ASM FOR ADDITIONAL INFORMATION.

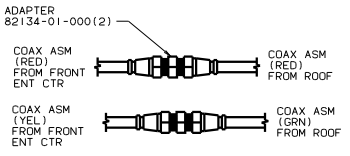
- 2 WINNEBAGO
- 1 ITASCA

99 430V 1B1 265

TITLE		WIRING INSTL-BODY (CEIL LMP)	
NO. OF SHEETS	1	SHEET NO.	1
DRAWING NO.		130225	

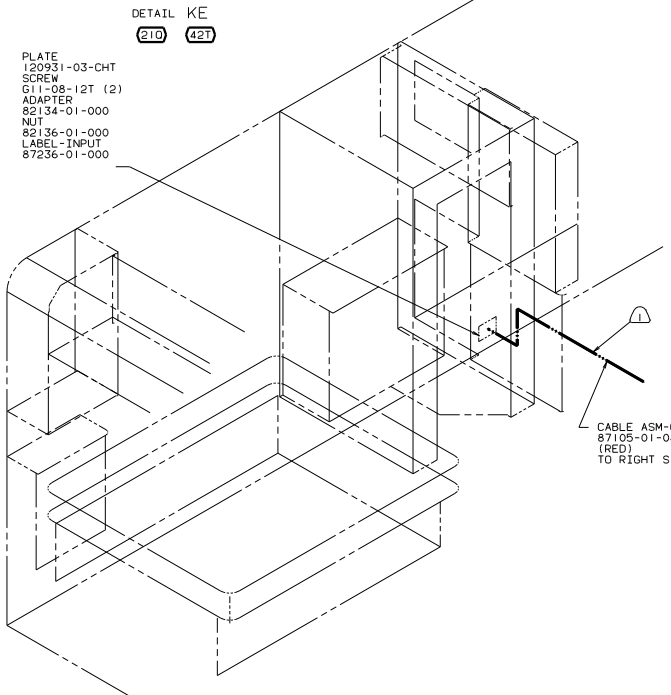


VIEW KD-KD
(210) (421)



DETAIL KE
(210) (421)

- PLATE 120931-03-CHT
- SCREW G11-08-12T (2)
- ADAPTER 82134-01-000
- NUT 82136-01-000
- LABEL-INPUT 87236-01-000

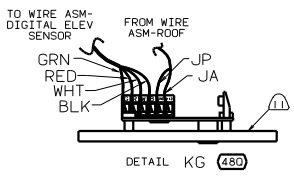
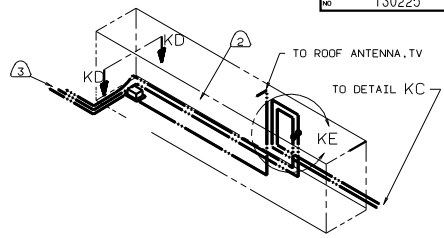


- (1) SENSOR ASM SUPPLIED WITH (480)
- (10) ROUTE COAX THRU SIDEWALL.
- (9) SEE DRAWING 76319-01-000 FOR INSTALLATION OF TV ANTENNA.
- (8) LOCATE TO RETAIN CABLE BUT NOT TO RESTRICT ANTENNA TRAVEL.
- (7) ADD RUBBER BUMPER TO ROOF UNDER EACH END OF ANTENNA IN DOWN POSITION WHICH MAY COME INTO CONTACT WITH ROOF.
- (6) NOT USED WITH (76C)
- (5) SEE WIRING INSTL-TV/VCR.SIDE FOR ADDITIONAL INFORMATION.
- (4) SEE ENT CTR INSTL-EXT FOR ADDITIONAL INFORMATION.
- (3) SEE WIRING INSTL-TV/VCR FRONT FOR ADDITIONAL INFORMATION.
- (2) WIRE ROUTED IN ROOF.
- (1) ROUTE WIRE THRU FLOOR.

NOTES:

SEE DETAIL KG

- ADAPTER 76319-06-000
- SCREW G11-08-08T(4) (EXT)
- ANTENNA 76319-23-000 (A)
- KIT-HARDWARE INTERIOR 76319-25-000
- CLIP-WIRE 80734-02-000 (A)
- BUMPER 69726-01-000 (7)

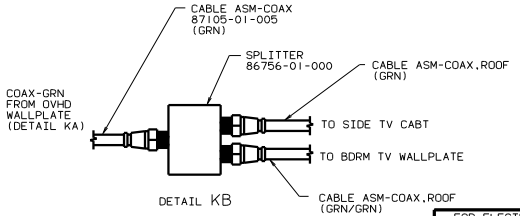
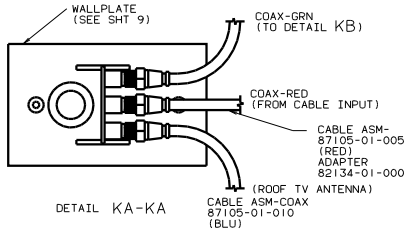
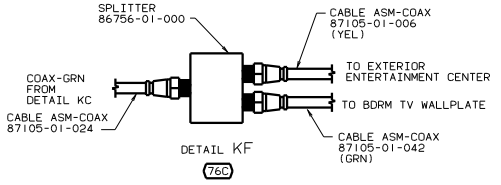
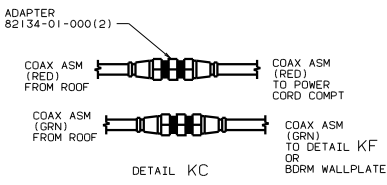


CABLE ASM-COAX, RADIO ANTENNA (SEE SHT 11)

WALLPLATE-TV, BDRM (SEE SHT 8)

CABLE ASM-COAX 87105-01-057 (GRN)

WALLPLATE (REF) (459)

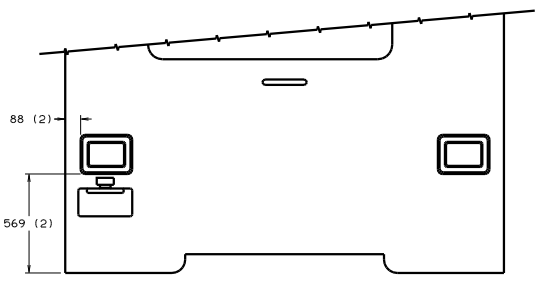


FOR ELECTRICAL TORQUE SPECIFICATIONS SEE DWG NO. 128783-01-000

(1C1) CABINET-SIDE W/O TV STORAGE

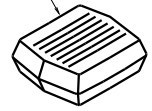
- (480) SATELLITE DISH
- (1C2) CABT-SIDE-CAB OVHD W/O TV ST
- (1E1) CABINET-SIDE W/O TV STORAGE
- (76C) ENTERTAINMENT CTR/EXT CSETTE
- (49X) BED-QUEEN-BACKWALL
- (459) BED-TWINS
- (421) TV-19" FRONT & SWITCHING SYS
- (210) TV-19" W/VCR/SWITCHING SYS
- (265) CODES/STANDARDS-CSA/CMVSS
- (1B1) CODES STANDARDS/USA

99 430V (1B1) (265)



VIEW KA-KA

- (250) AIR CONDITIONER 13188-01-CHT
- CETILING ASM 13184-01-CHT
- DIVIDER 13184-02-CHT
- (SEE DETAIL KC FOR WIRING)



ANTENNA ASM-TV (SEE SHT 10)

(480) SATELLITE ASM 120233-04-000

- LAMP-MARKER, BASE 111102-01-000 (5)
- LAMP-MARKER, LENS, AMBER 111102-02-000 (5)
- SCREW G11-08-12T (10)
- CONNECTOR 58028-01-000(10)

WIRE ASM-CLEARANCE LAMPS (7)

WIRE ASM-SIDEWALL

(6) WIRE ASM-CLEARANCE LAMPS

- LAMP-MARKER, BASE 111102-01-000 (5)
- LAMP-MARKER, LENS, RED 111102-03-000 (5)
- SCREW G11-08-12T (10)
- CONNECTOR 58028-01-000(10)

- TAIL LAMP ASM 81638-01-000(2)
- SCREW G67-10-129(16)
- POD TAIL LAMP 103355-02-CHT(2)
- SCREW 78538-01-CHT(4)
- CONNECTOR 58028-01-000 (8)
- SEALER TAPE 69640-21-000(3, 4)

- BRACKET-LICENSE 66432-03-000
- SCREW G67-10-129 (2)
- LIGHT-LICENSE 66432-02-000
- SCREW G56-10-12U (EXT) (2)
- CONNECTOR 58028-01-000 (2)

(6) WIRE ASM-TAILLAMPS

WIRE ASM-CHASSIS

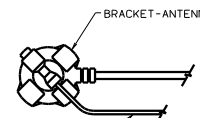
TRAILER PLUG ASM

HITCH ASM

KA

- LIGHT ASM-BRAKE, CENTER MOUNT 121950-01-000
- SCREW (SUPPLIED W/LIGHT) SPLICE 112823-01-000 (2)

- LAMP-MARKER, BASE 111102-01-000 (2)
- LAMP-MARKER, LENS, RED 111102-03-000 (2)
- SCREW G11-08-12T (4)
- CONNECTOR 58028-01-000(4)



VIEW KB-KB

KB

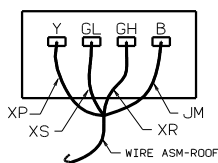
- ANTENNA-SHAFT EXTENDER 109889-01-000
- BRACKET-ANTENNA GROUND 108847-01-000
- ANTENNA 90944-01-000
- SEAL

(76C)

- LAMP 97917-01-CHT
- SCREW G67-08-12U (EXT) (4)
- LAMP 8089-02-000
- SCREW G67-06-10T(2)
- SEAL
- CONNECTOR 58028-01-000(2)

(265)

- LAMP-MARKER, BASE, SIDEWALL 111102-01-000 (2)
- LENS-MARKER, AMBER 111102-02-000 (2)
- SCREW G11-08-12U(EXT) (4)
- CONNECTOR 58028-01-000(4)



DETAIL KC

- (7) LOCATED IN ROOF ASM.
- (6) LOCATED IN BACKWALL ASM.
- (5) WRAP BRACKET LEGS AROUND ANTENNA BASE.
- (4) SECURE WIRE BELOW COACH WITH CLAMP 10496-01-000 AND SCREW G67-10-12B.
- (3) CONNECT TO WIRE ASM-SIDEWALL
- (2) INSTALL WITH WIRES TOWARDS ROOF.

1. CONNECTOR-PLUG, TRAILER 113589-01-000 TO BE SUPPLIED LOOSE IN COACH WITH TRAILER TOW PACKAGE.

NOTES:

- (76C) ENTERTAINMENT CTR/EXT CSETTE
- (480) SATELLITE DISH
- (250) A/C ROOF AIR (1) 14,800 BTU
- (265) CODES/STANDARDS-CSA/CMVSS
- (1B1) CODES STANDARDS/USA

FOR ELECTRICAL TORQUE SPECIFICATIONS SEE DWG NO. 128753-01-000

99 430V (1B1)(265)
 TITLE: WIRING INSTL-BODY(EXT LMP)
 SHEET 11 OF 11