



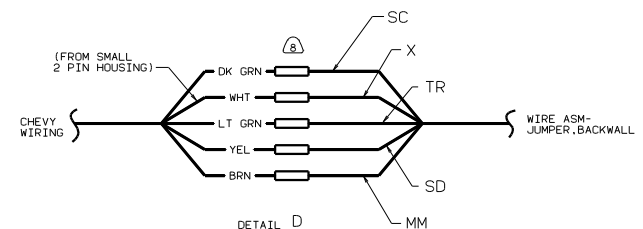
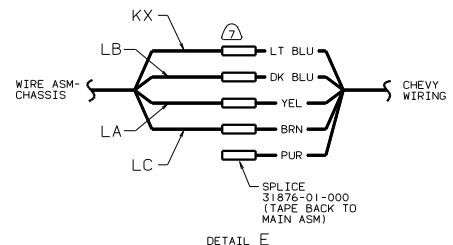
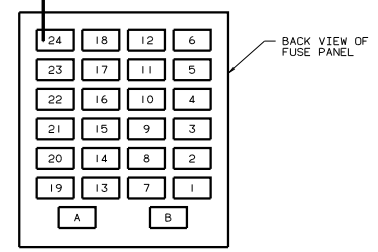
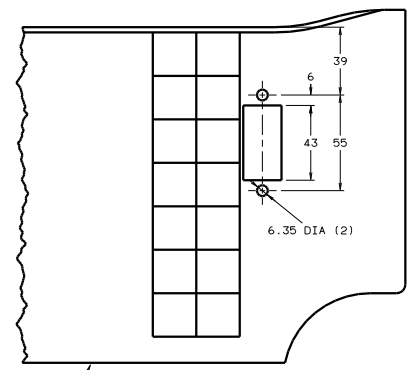
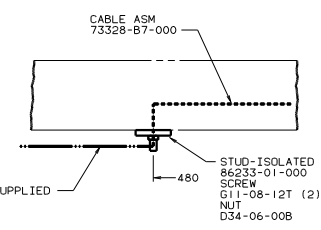
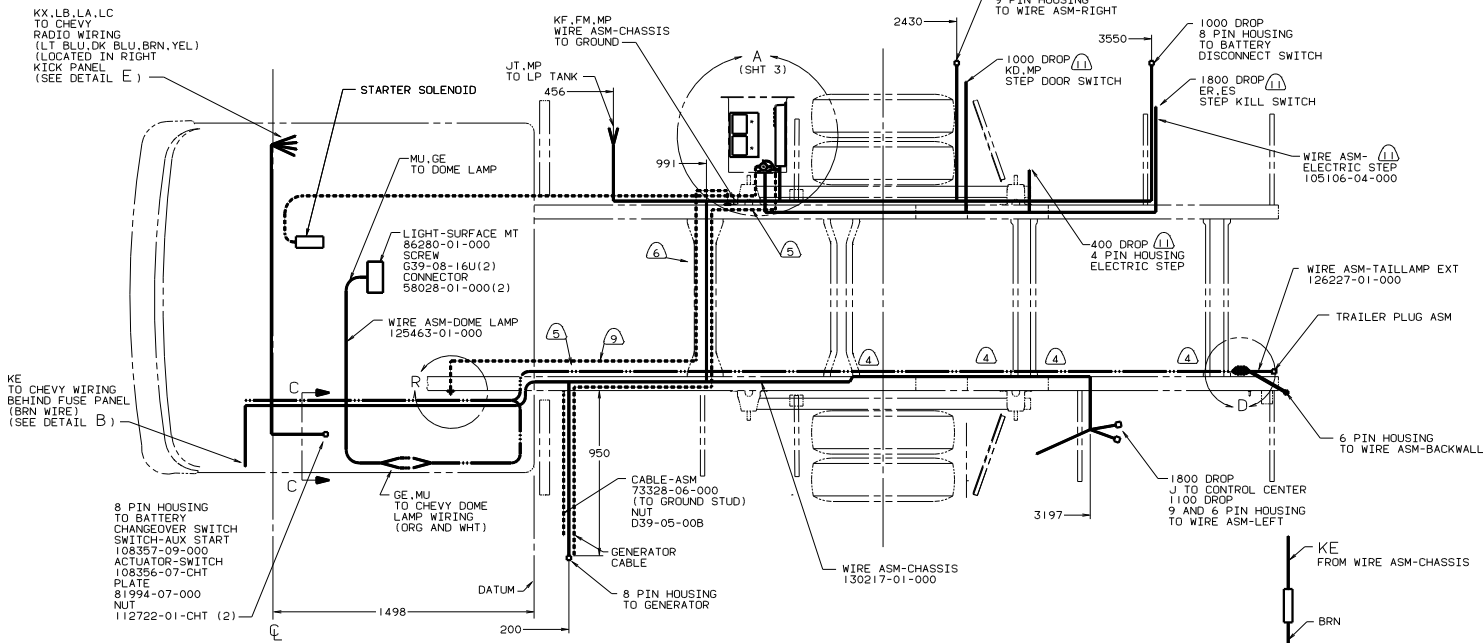
DANGER

Danger of electrical shock, burns or death. Always remove all power sources before attempting any repair, service or diagnostic work. Power can be present from shore power, generator, inverter or battery. All power sources must be disabled and secured before performing any service.



CAUTION

If you lack the skills, tools or equipment to perform diagnostic or repair work leave such work to an authorized Winnebago Industries dealer or other qualified shop.



- 11 IE2 ENTRANCE STEP-ELEC.
 - 10 ADD TERMINAL 8348-01-000.
 - 9 54P CHEVY CHASSIS, DIESEL.
 - 8 APPLY HEAT TO SPLICES TO ACTIVATE EPOXY AND SHRINK JACKET AROUND WIRES. COVER WIRES WITH CONVOLUTE TUBING AND TAPE.
 - 7 CUT OFF CHEVY 6 PIN HOUSING AND RECONNECT AS SHOWN.
 - 6 WIRES TO BE TIED TO CROSS MEMBER USING EXISTING HOLES.
 - 5 WIRES TO BE TIED ON TOP OF RAIL USING EXISTING HOLES.
 - 4 WIRES TO BE TIED INSIDE OF RAIL USING EXISTING HOLES.
3. USE WITH TIES 8343-02-000 AND 116673-01-000. APPROXIMATELY 600MM ON CENTER UNLESS OTHERWISE SPECIFIED.
2. SECURE CONDUIT 41953-01-000 OVER ALL WIRE IN CONTACT WITH SHARP EDGES.
1. LEGEND: — WINNEBAGO, CABLE, — CHASSIS SUPPLIED WIRING.

FOR ELECTRICAL TORQUE SPECIFICATIONS SEE DWG NO 128783-01-000

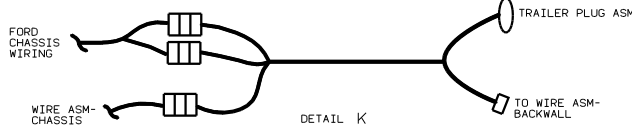
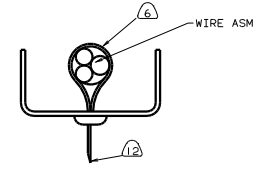
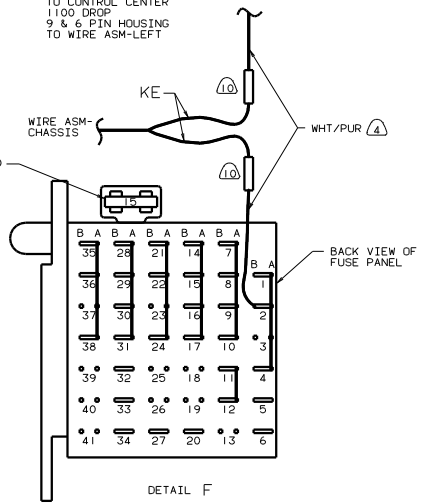
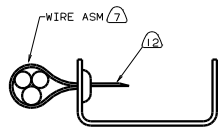
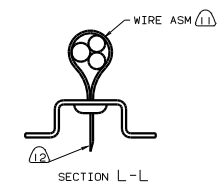
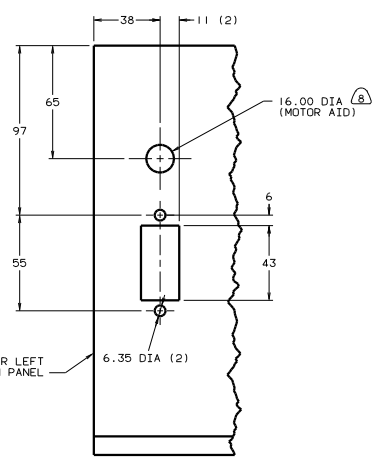
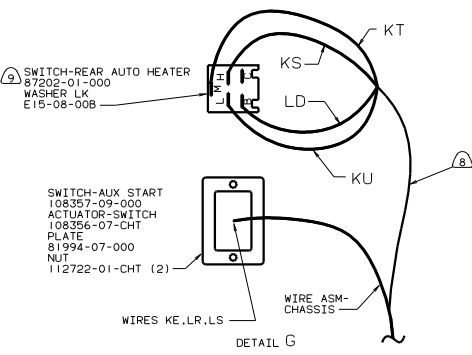
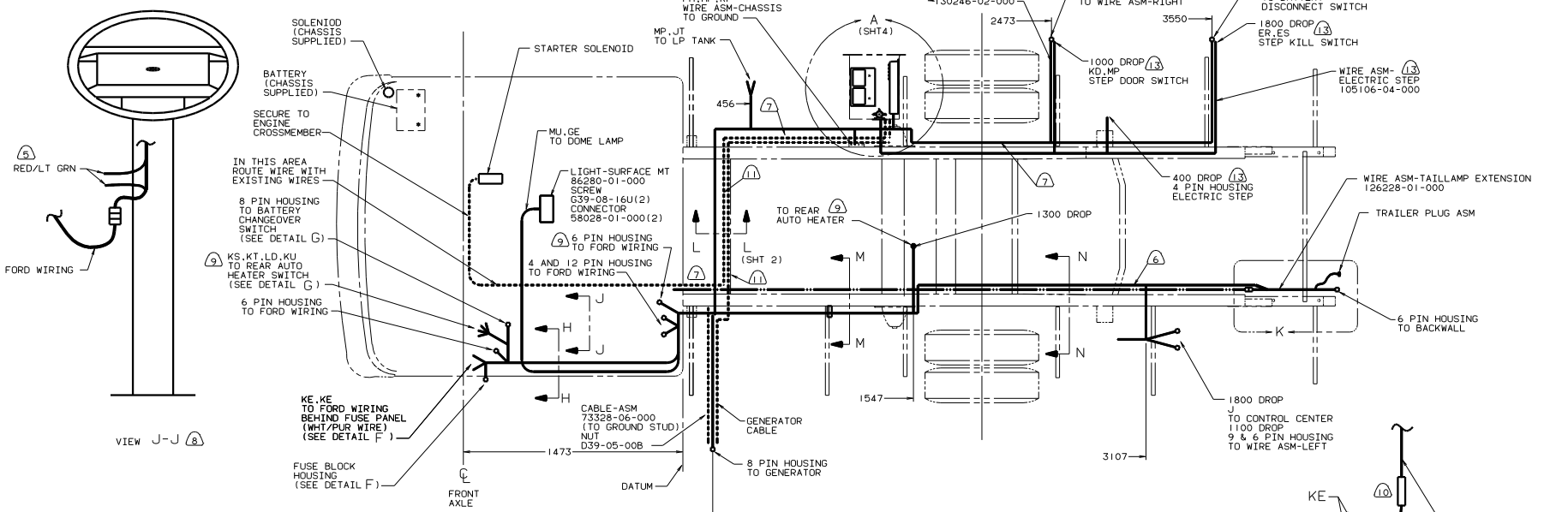
WINNEBAGO 99 322R

DATE	UNSPECIFIED TOLERANCES ARE:	MATERIAL
DATE	WHOLE DIM (1)	FRACTIONS
DATE	ONE-PLACE (1)	TWO-PLACE (1)
DATE	THREE-PLACE (1)	FOUR-PLACE (1)
DATE	ANGLES	DECIMALS
DATE	THREADS	PROJECTIONS
DATE	DATE	DATE

WIRING INSTL-CHASSIS

SHEET 1 OF 4

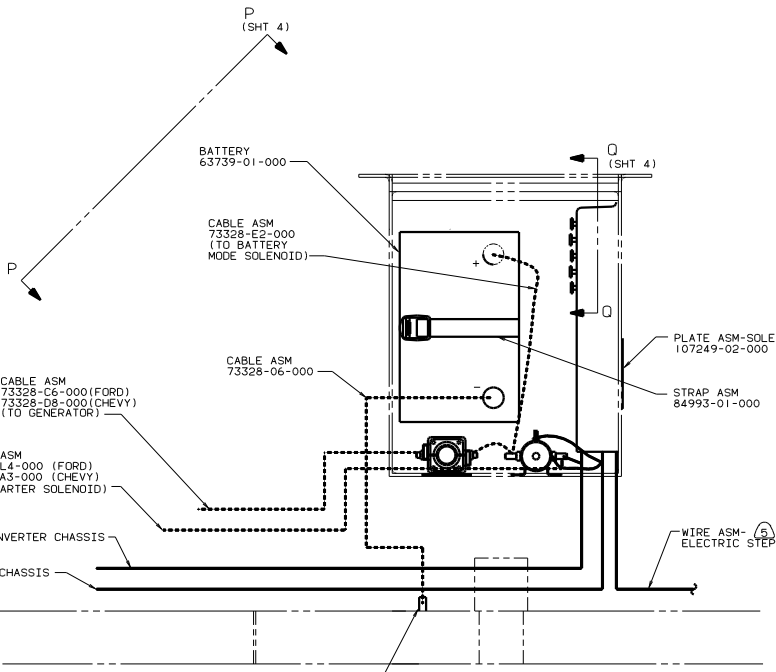
130216



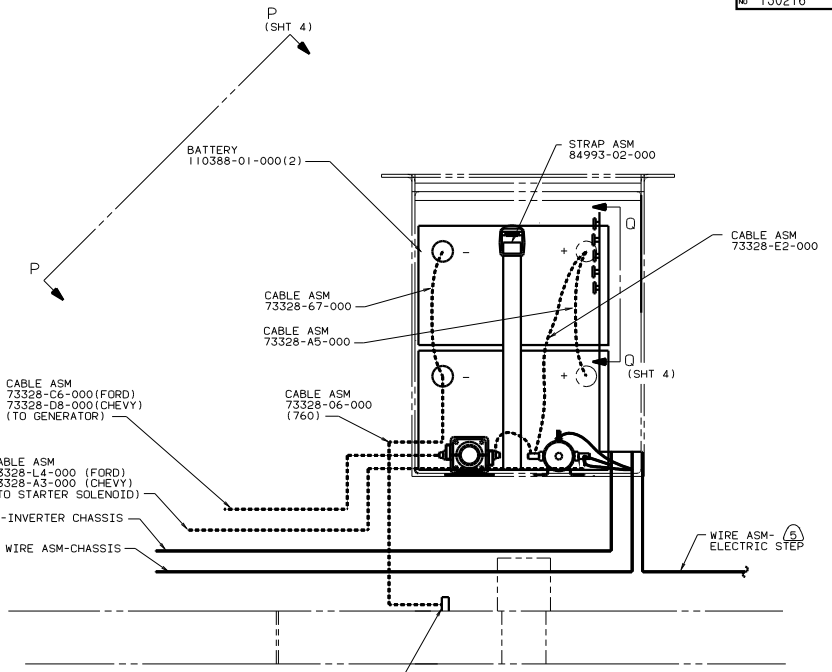
- ⑬ IE2 ENTRANCE STEP-ELECTRIC.
- ⑫ CUT OFF EXCESS END OF WIRE TIE.
- ⑪ WIRES TO BE TIED TO CROSSMEMBER USING EXISTING HOLES.
- ⑩ APPLY HEAT TO SPLICE TO ACTIVATE EPOXY SEAL AND TO SHRINK.
- ⑨ 611 RR AUTO HTR/MOTORAID.
- ⑧ 04L JAPAN EXPORT PKG.
- ⑦ WIRES TO BE TIED ON TOP OF RAIL USING EXISTING HOLES.
- ⑥ WIRES TO BE TIED INSIDE OF RAIL USING EXISTING HOLES.
- ⑤ CUT RED/LT GRN WIRE AND TAPE ENDS ON 04L JAPAN EXPORT PKG.
- ④ CUT WIRE AND RECONNECT AS SHOWN.

3. USE WITH TIES 8343-02-000 AND 116673-01-000 APPROXIMATELY 600MM ON CENTER UNLESS OTHERWISE SPECIFIED.
2. SECURE CONDUIT 41953-01-000 OVER ALL WIRE IN CONTACT WITH SHARP EDGES.
1. LEGEND: — WINNEBAGO, CABLE, - - - CHASSIS SUPPLIED WIRING.

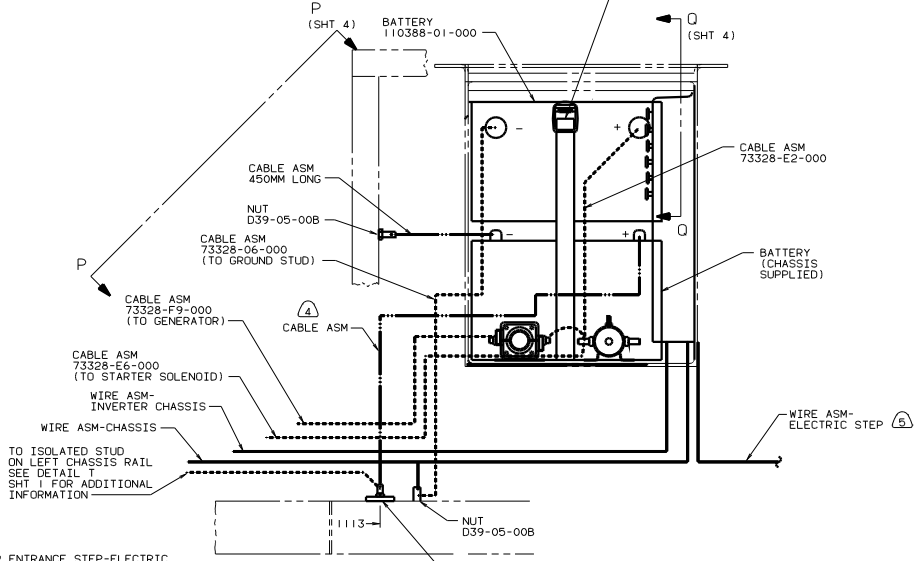
FOR ELECTRICAL TORQUE SPECIFICATIONS SEE DWG NO. 128783-01-000



DETAIL A
(12X BATTERY-ONE)



DETAIL A
22W BATTERY-TWO

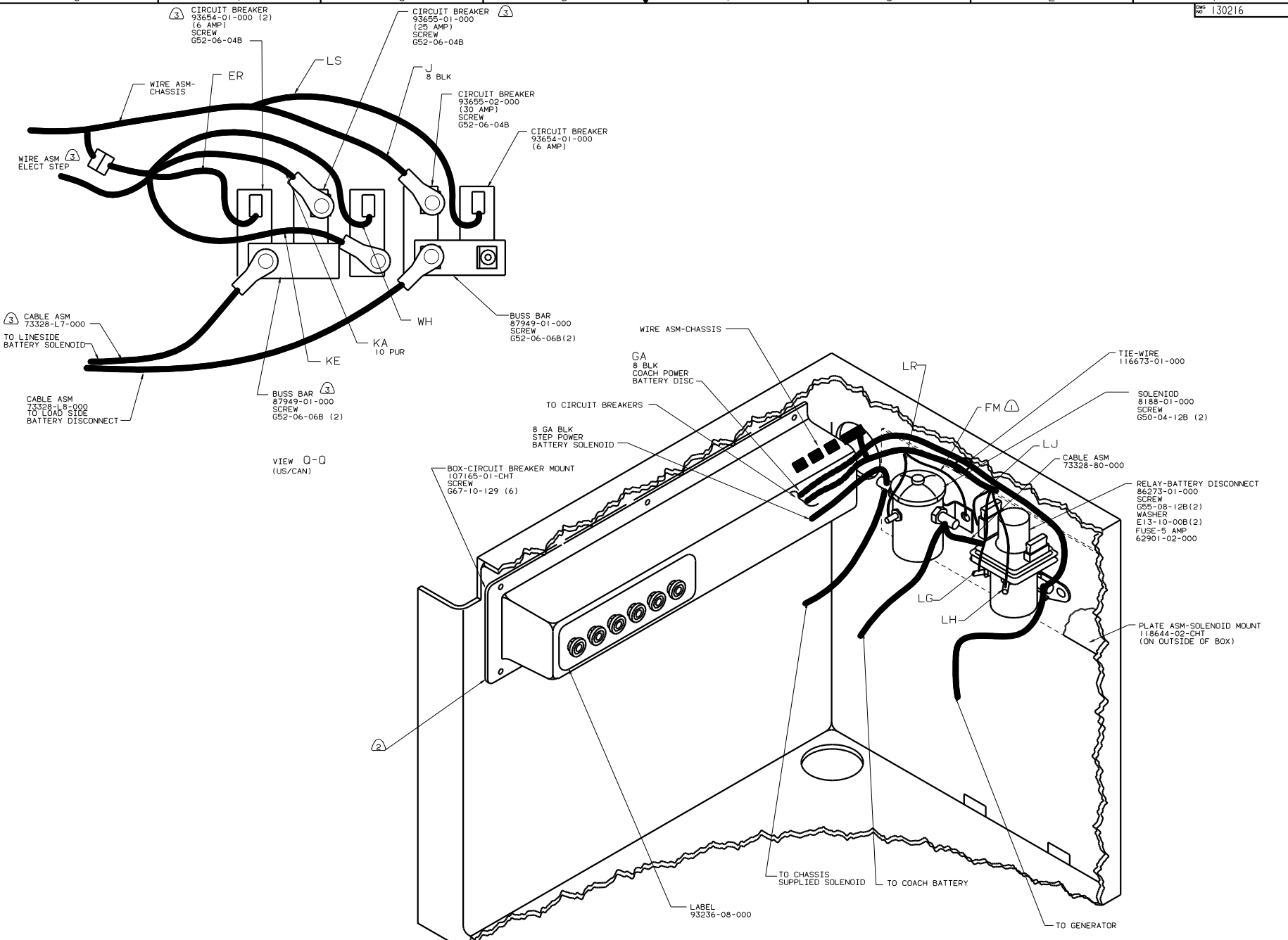


DETAIL A
(54P CHEVY CHASSIS, DIESEL)

- NOTES:
- ⑤ IE2 ENTRANCE STEP-ELECTRIC.
 - ④ TRIM CABLE TO 800. ADD TERMINAL 8348-01-000.
 - ③ ADD TERMINAL 8348-01-000.
 - ② TRIM CABLE TO 700. ADD TERMINAL 8348-01-000.
 - ① TRIM CABLE TO 600. ADD TERMINAL 8348-01-000.

FOR ELECTRICAL
TROUBLE
SPECIFICATIONS
SEE DWG NO.
128783-01-000

TITLE		99 322R	
WIRING INSTL-CHASSIS			
NO. OF SHEETS	TOTAL SHEETS	REV.	DATE
3 OF 4	4		



- ③ IE2 ENTRANCE STEP-ELEC.
- ② LOCATE BOX HORIZONTALLY BY CENTERING ON HOLE IN REAR OF COMPARTMENT.
- ① SECURE WITH SOLENIOD MOUNTING BOLT.

NOTES:

FOR ELECTRICAL TORQUE SPECIFICATIONS SEE DWG NO. 128783-01-000

99 322R	
TITLE: WIRING INSTL-CHASSIS	130216
NO. OF SHEETS: 4	SHEET 4 OF 4
REV. NO.	1