



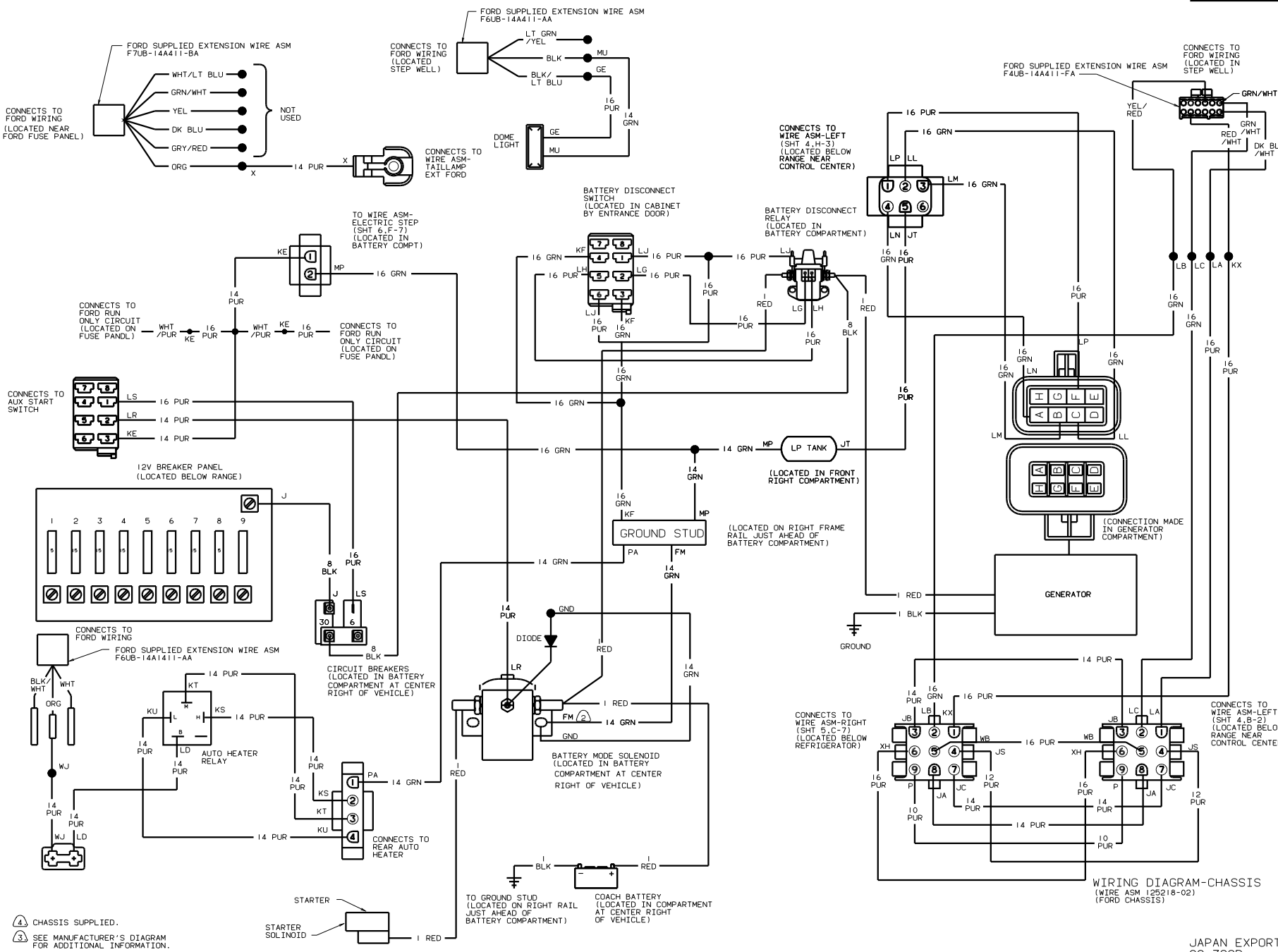
DANGER

Danger of electrical shock, burns or death. Always remove all power sources before attempting any repair, service or diagnostic work. Power can be present from shore power, generator, inverter or battery. All power sources must be disabled and secured before performing any service.



CAUTION

If you lack the skills, tools or equipment to perform diagnostic or repair work leave such work to an authorized Winnebago Industries dealer or other qualified shop.

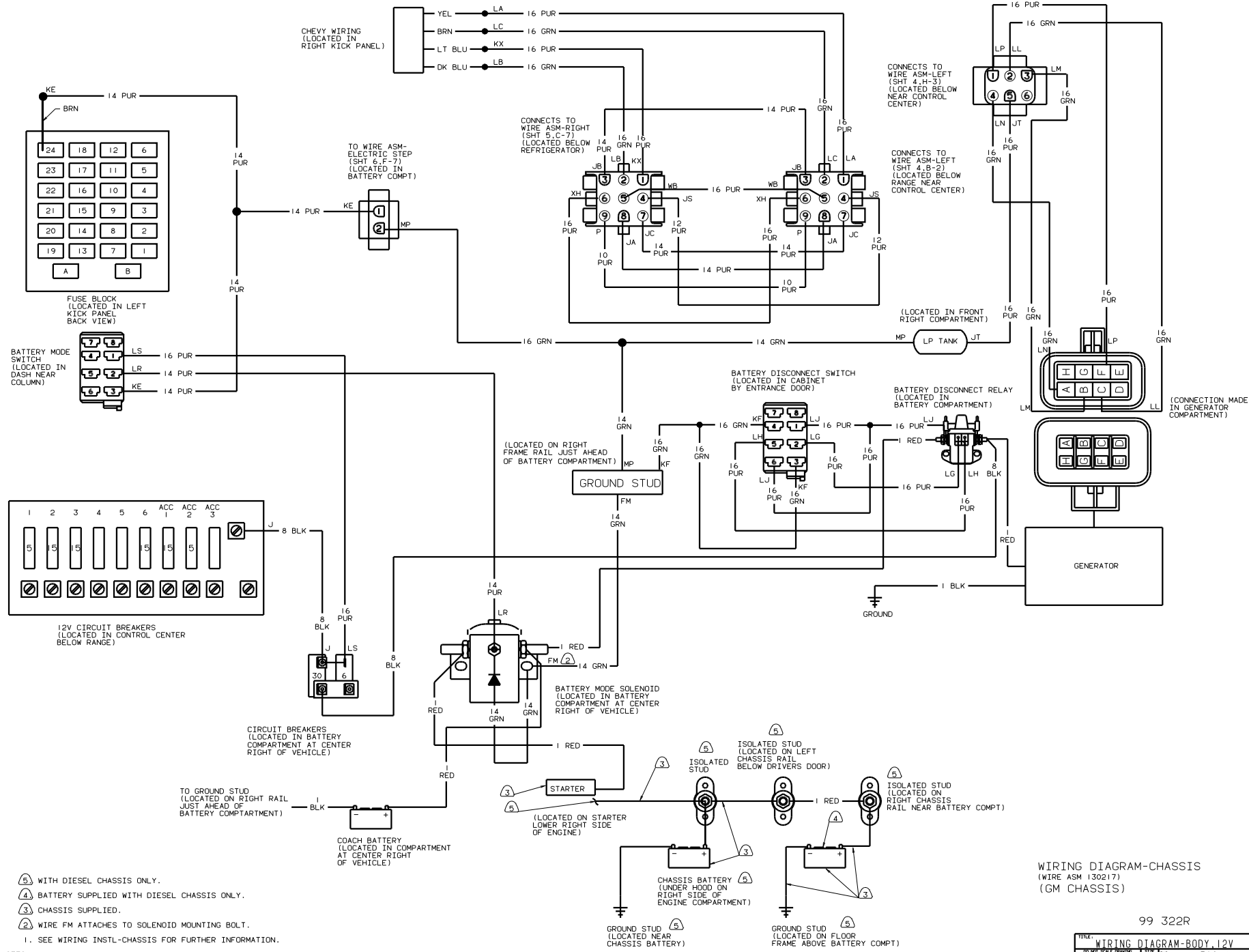


WIRING DIAGRAM-CHASSIS (WIRE ASM 125218-02) (FORD CHASSIS)

JAPAN EXPORT 99 322R

TITLE	WIRING DIAGRAM-BODY-12V
NO. OF SHEETS	2 OF 6
SHEET	2 OF 6
DATE	1.6
NO.	130214

- NOTES:
- CHASSIS SUPPLIED.
 - SEE MANUFACTURER'S DIAGRAM FOR ADDITIONAL INFORMATION.
 - WIRE FM ATTACHES TO SOLENOID MOUNTING BOLT.
1. SEE WIRING INSTL-CHASSIS FOR FURTHER INFORMATION.

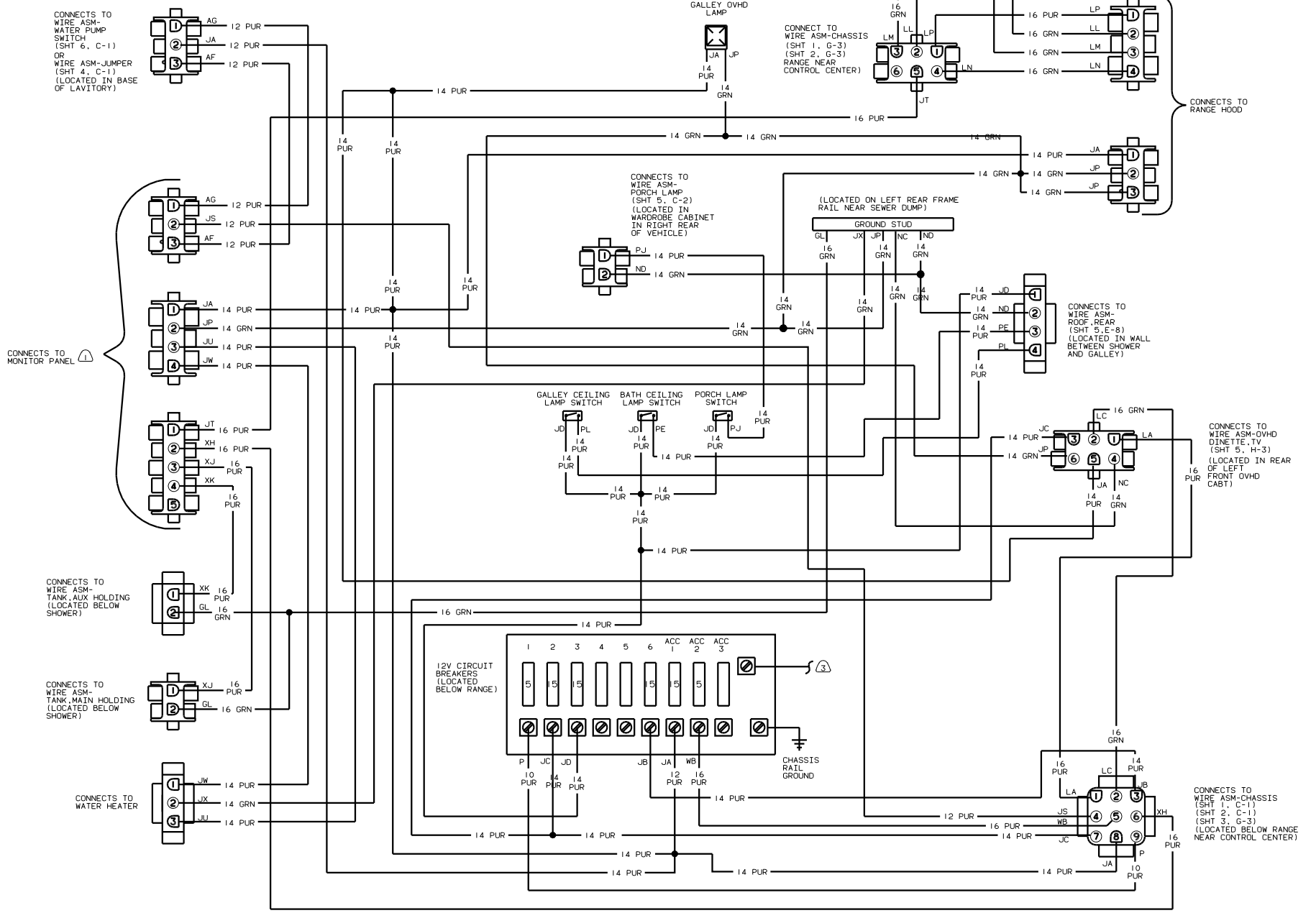


- ⑤ WITH DIESEL CHASSIS ONLY.
 - ④ BATTERY SUPPLIED WITH DIESEL CHASSIS ONLY.
 - ③ CHASSIS SUPPLIED.
 - ② WIRE FM ATTACHES TO SOLENOID MOUNTING BOLT.
1. SEE WIRING INSTL-CHASSIS FOR FURTHER INFORMATION.

WIRING DIAGRAM-CHASSIS
 (WIRE ASM 130217)
 (GM CHASSIS)

99 322R

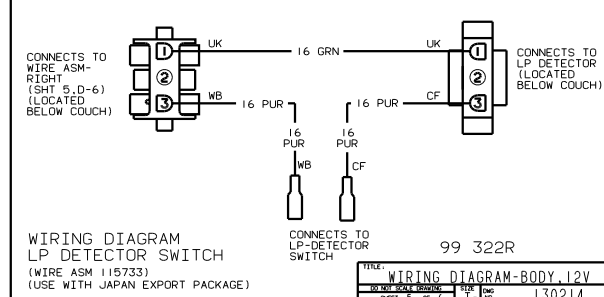
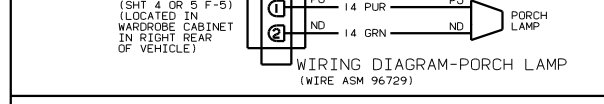
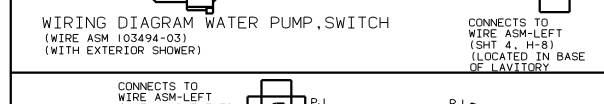
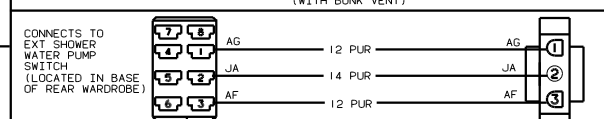
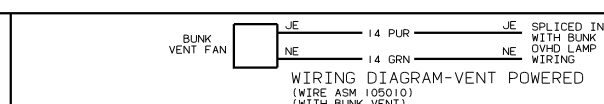
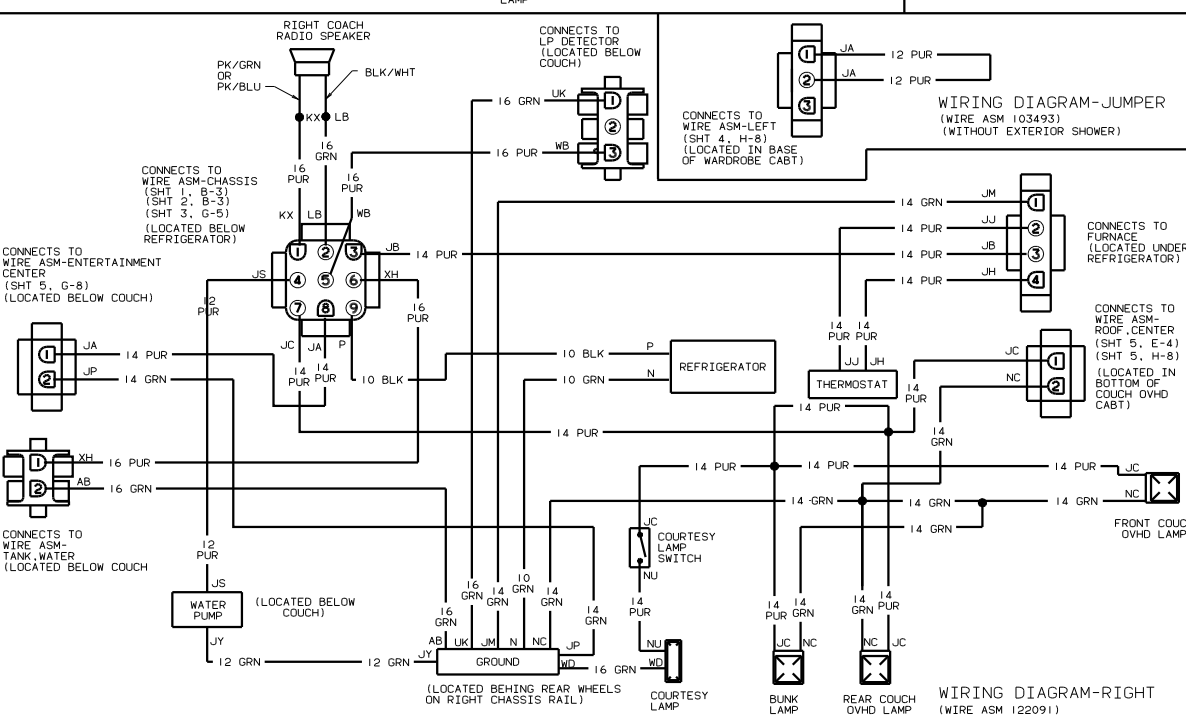
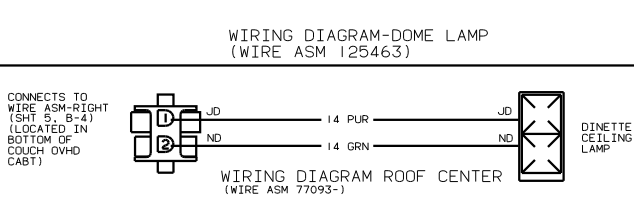
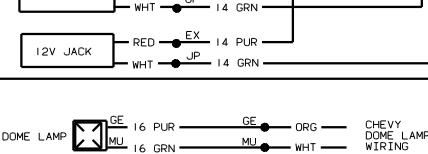
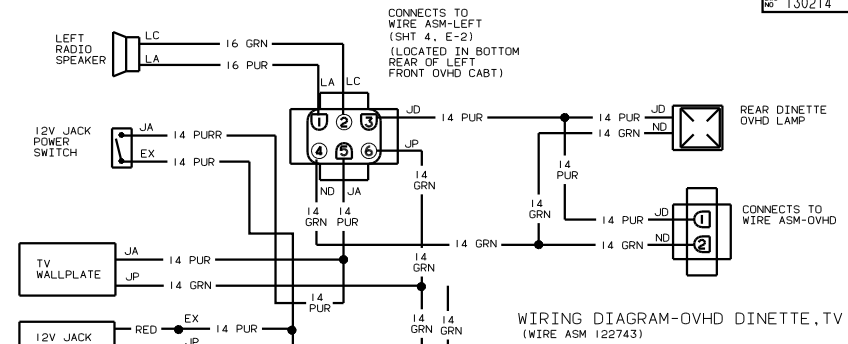
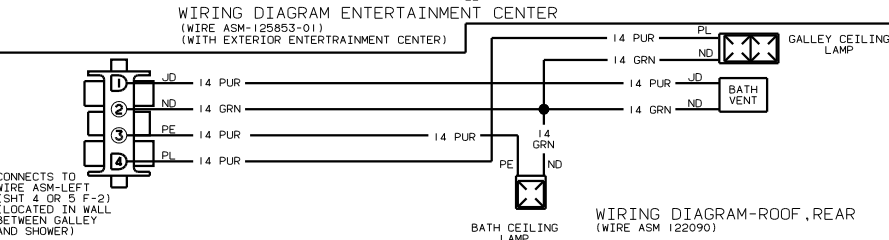
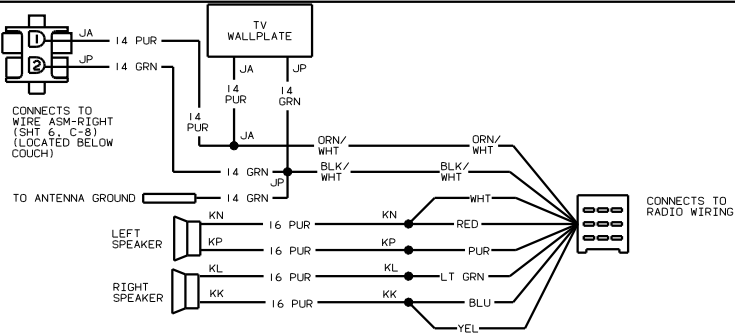
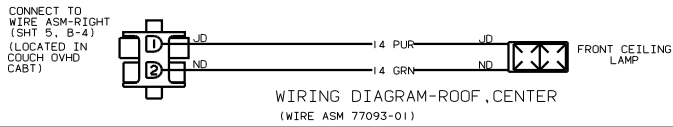
TITLE: WIRING DIAGRAM-BODY 12V	
30-000-0000-0000	REV: 1.0
SHEET 3 OF 6	FIG NO: 130214



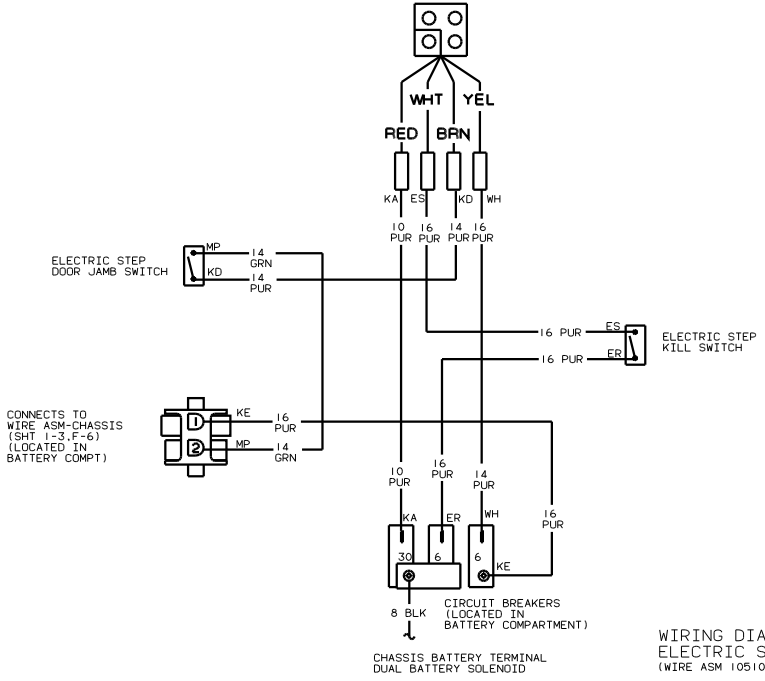
⚠ SEE SHT'S 1 & 3 FOR ADDITIONAL INFORMATION.
 ⚠ USED WITH TV/VCP PACKAGE.
 ⚠ SEE MONITOR PANEL DRAWING FOR ADDITIONAL INFORMATION.

WIRING DIAGRAM-LEFT
(WIRE ASM 125217)

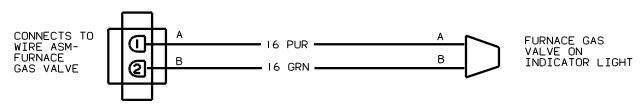
99 322R	
TITLE: WIRING DIAGRAM-BODY_12V	
NO. OF SHEETS	TOTAL SHEETS
1	6
130214	



ELECTRIC STEP



WIRING DIAGRAM-
ELECTRIC STEP
(WIRE ASM 105106-04)



WIRING DIAGRAM-
FURNACE GAS LIGHT
(WIRE ASM 107574)