



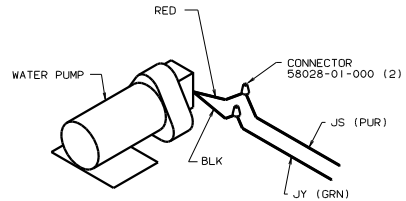
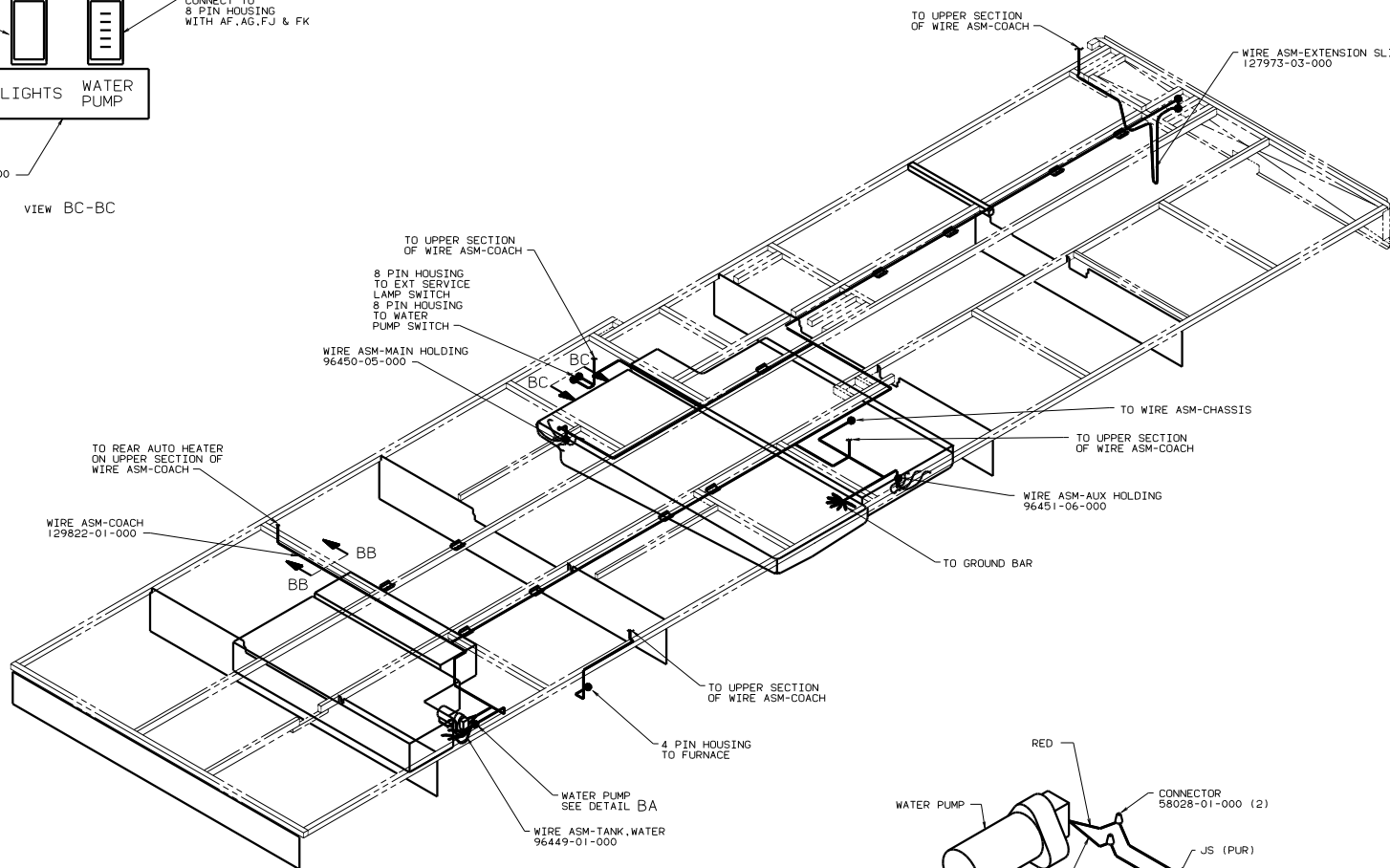
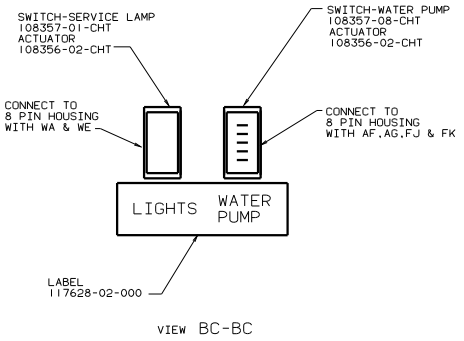
DANGER

Danger of electrical shock, burns or death. Always remove all power sources before attempting any repair, service or diagnostic work. Power can be present from shore power, generator, inverter or battery. All power sources must be disabled and secured before performing any service.

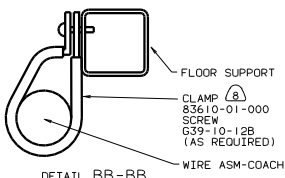


CAUTION

If you lack the skills, tools or equipment to perform diagnostic or repair work leave such work to an authorized Winnebago Industries dealer or other qualified shop.



DETAIL BA



DETAIL BB-BB

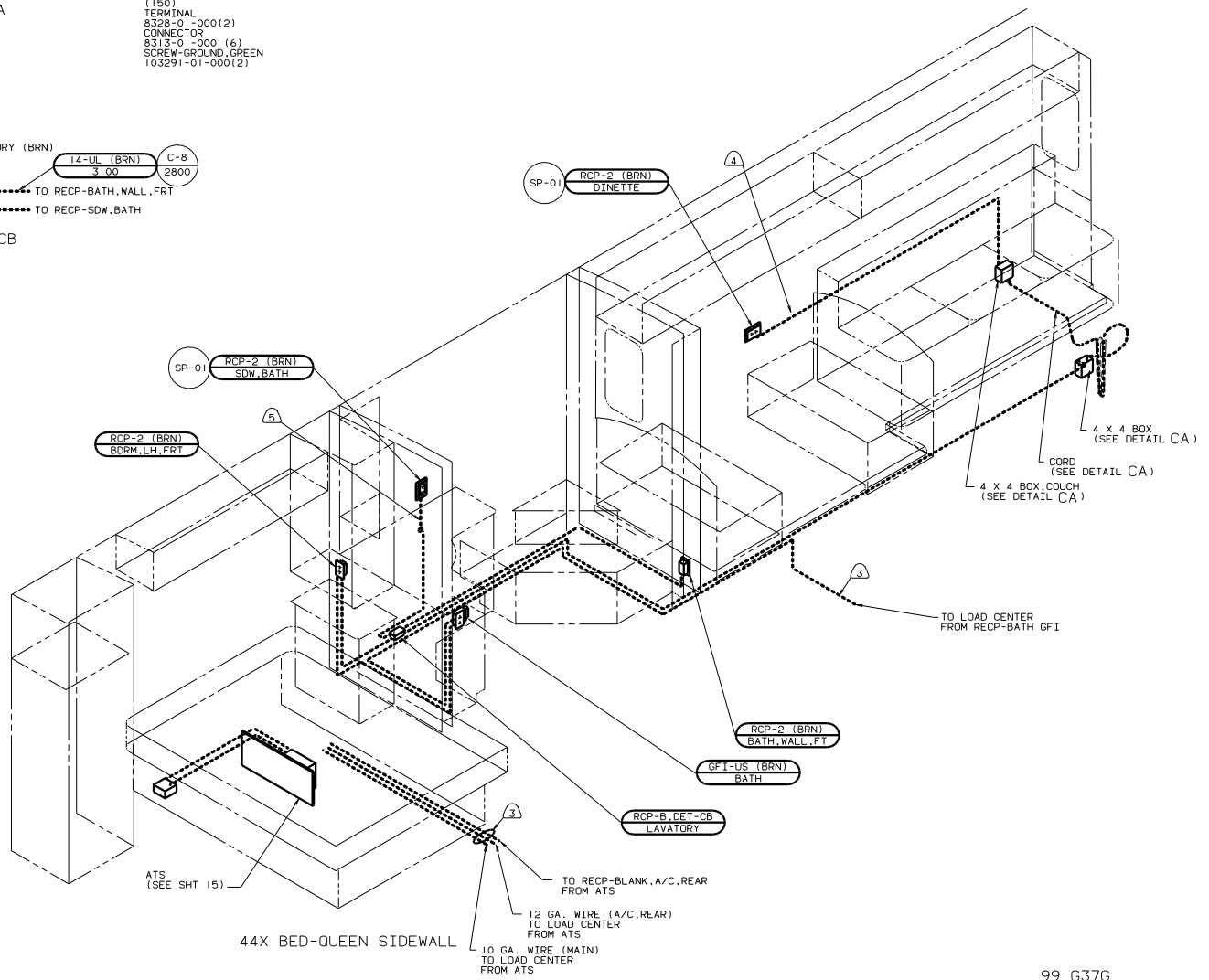
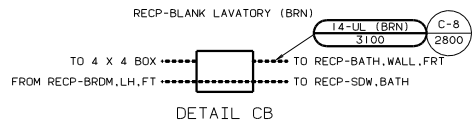
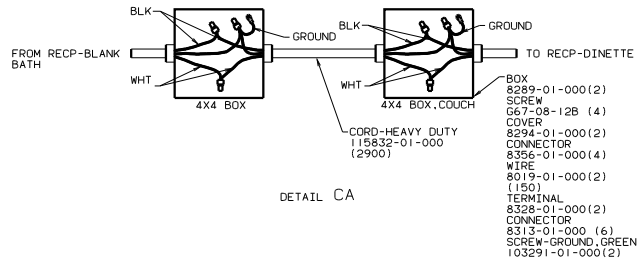
3. WIRES THAT REST ON WIRE TRAYS ARE TO BE TIED DOWN WITH WIRE TIE 8343-02-000.
2. CLAMP TO FLOOR SUPPORT TUBES AS NECESSARY WITH CLAMP 10497-01-000
1. ALL WIRE TO BE CLAMPED WITH CLAMP 10495-01-000 OR CLIP 80734-01-000 EVERY 700. USE SCREW G67-10-12B UNLESS OTHERWISE SPECIFIED.

NOTES:

| | |
|-----|-------------------------------|
| X-X | FOR ELECTRICAL CALLOUTS |
| | SEE DWG NO. 121339-01-000 |

99 F&G37G
1B1 CODE STANDARD-USA
265 CODE STANDARD-CSA

| | |
|---------------|---------------------------|
| FILE | WIRING INSTL BODY(BL 12V) |
| NO. OF SHEETS | 2 OF 24 |
| DWG NO. | 130060 |



- ⑤ WIRE ROUTED THRU SIDEWALL.
- ④ WIRE IN SIDEWALL.
- ③ WIRE ROUTED BELOW FLOOR

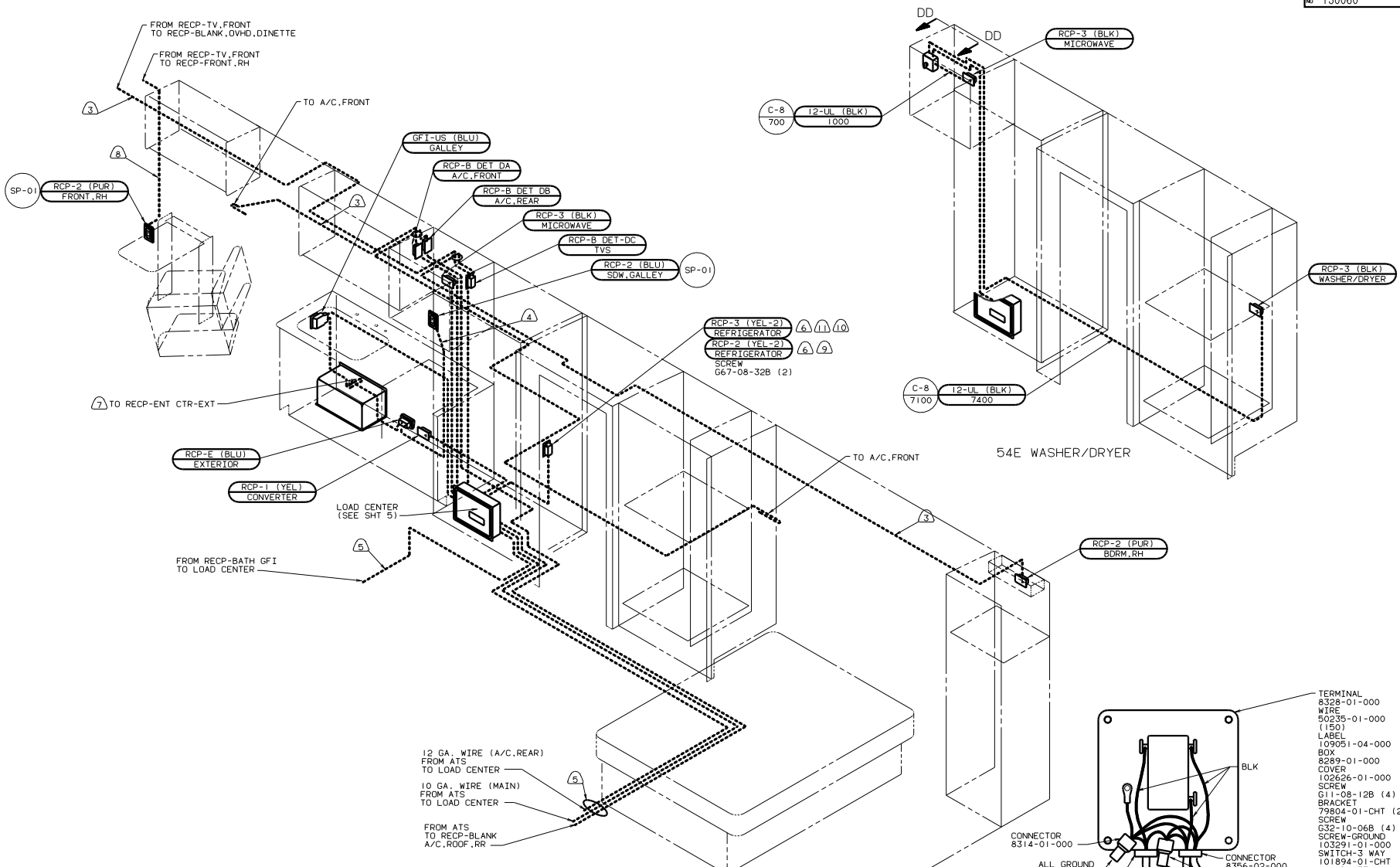
2. ALL WIRES ARE TO BE CLAMPED WITH CLAMP 10497-05-000 WITHIN 200 OF OUTLET BOXES. USE SCREW 667-10-12B.
1. ALL WIRES TO BE CLAMPED WITH CLAMP 10495-01-000 OR CLIP 80734-02-000 EVERY 600. USE SCREW 667-10-12B UNLESS OTHERWISE SPECIFIED.

NOTES:

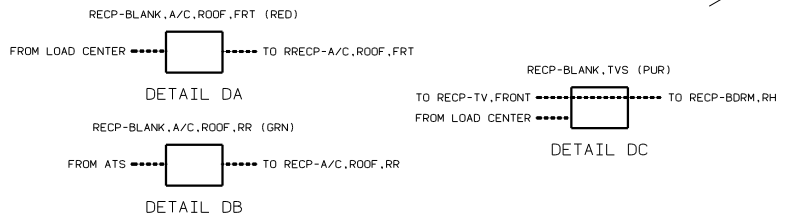
| | |
|--|---|
| FOR ELECTRICAL TORQUE SPECIFICATIONS SEE DWG NO. 128783-01-000 | FOR ELECTRICAL CALLOUTS SEE DWG NO. 121339-01-000 |
|--|---|

99 G37G
LEFT SIDE
181 CODES/STANDARDS USA
12D ELECTRICAL SYS-30 AMP

| | |
|---------------|------------------------------|
| FILE | WIRING INSTL-BODY (110130US) |
| NO. OF SHEETS | 3 OF 24 |
| DATE | 11/01/00 |
| DWG NO. | 130060 |



- 11 15U REFRIG-WITH ICEMAKER
 - 10 144 REFG-DOUBLE DOOR
 - 9 15Y REFRIG/FRZR SIDE/SIDE
 - 8 WIRE IN SIDEWALL.
 - 7 76C ENT CTR-EXT W/CSETTE OR 105 ENT CTR-EXT W/CD.
 - 6 LOCATE REFRIGERATOR RECEPTACLE ON TIEDOWN BRACKET.
 - 5 WIRE ROUTED BELOW FLOOR.
 - 4 WIRE ROUTED THRU SIDEWALL.
 - 3 WIRE IN ROOF.
2. ALL WIRES ARE TO BE CLAMPED WITH CLAMP 10495 WITHIN 200 OF OUTLET BOXES. USE SCREW 667-10-12B.
1. ALL WIRES TO BE CLAMPED WITH CLAMP 10495-01-000 OR CLIP 80734-02-000 EVERY 600. USE SCREW 667-10-12B UNLESS OTHERWISE SPECIFIED.

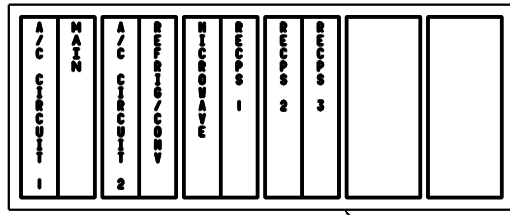
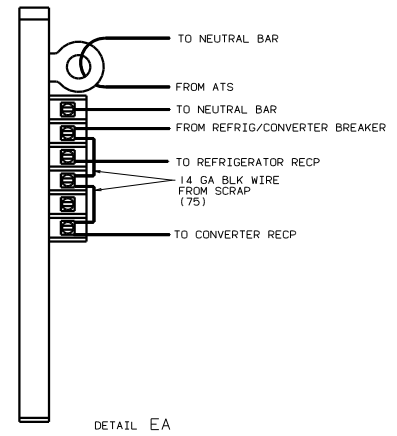
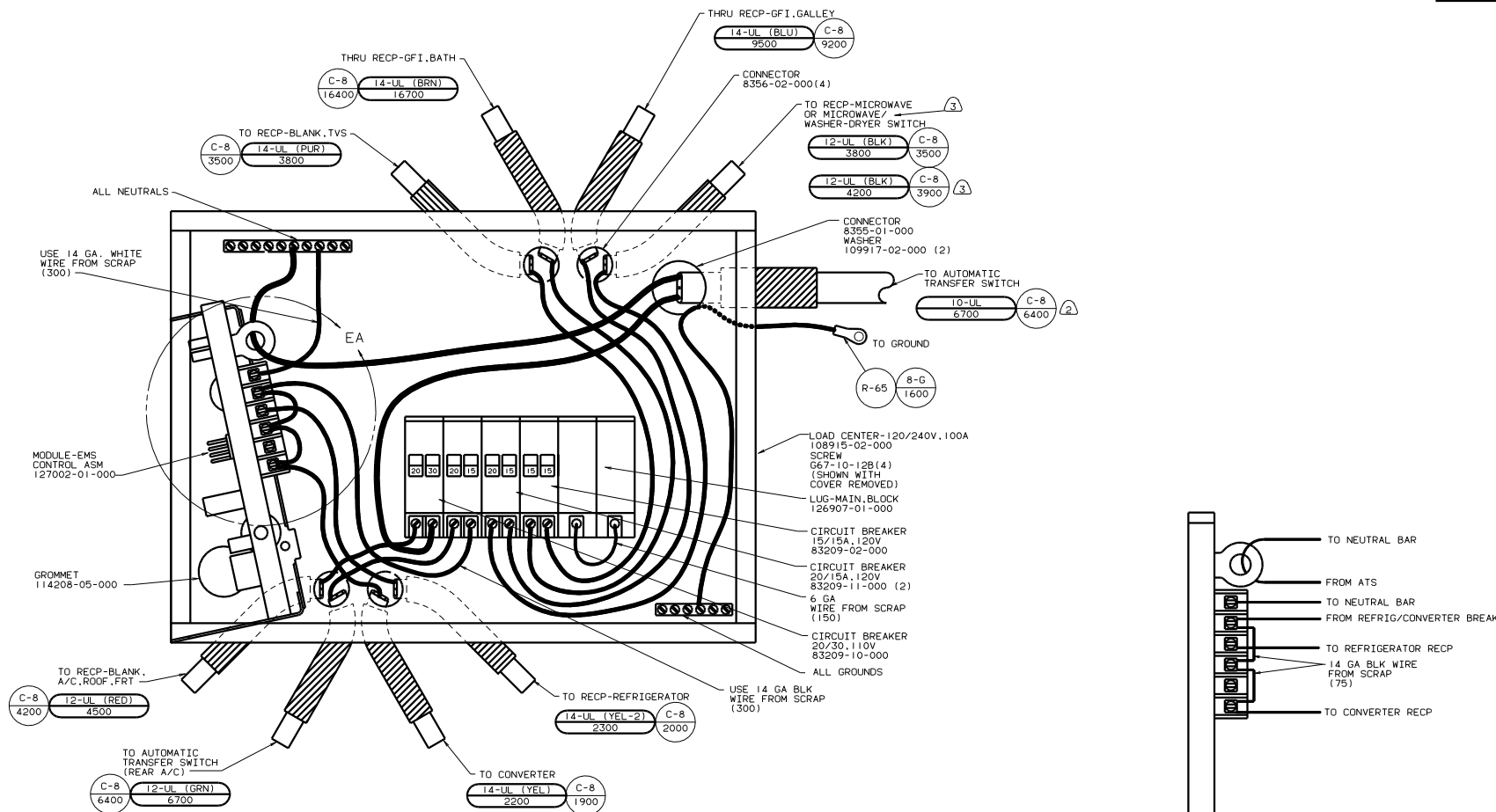


FOR ELECTRICAL TORQUE SPECIFICATIONS SEE DWG NO. 128783-01-000

FOR ELECTRICAL CALLOUTS SEE DWG NO. 121339-01-000

99 G37G
RIGHT SIDE
181 CODES/STANDARDS USA
12D ELECTRICAL SYS-30 AMP

| | |
|---------------|------------------------------|
| FILE | WIRING INSTL-BODY (11OR30US) |
| NO. OF SHEETS | 16 |
| SHEET | 4 OF 24 |
| DATE | 130060 |



INSTALL LABEL ON FRONT PANEL BELOW BREAKERS BETWEEN MOUNTING HOLES

- ③ 54E WASHER/DRYER
- ② WIRE MUST BE 700 LONG INSIDE BOX.

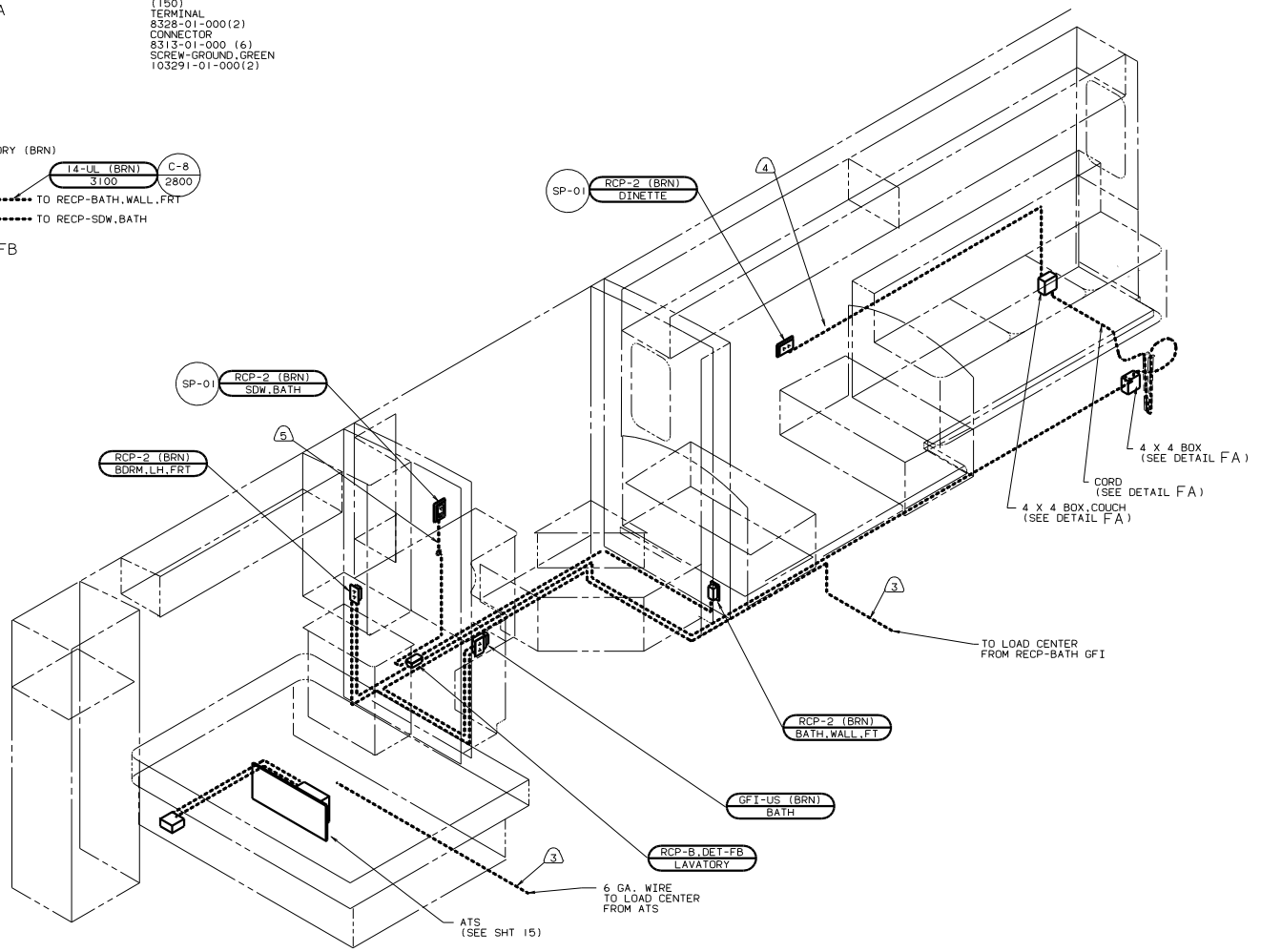
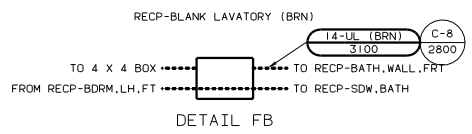
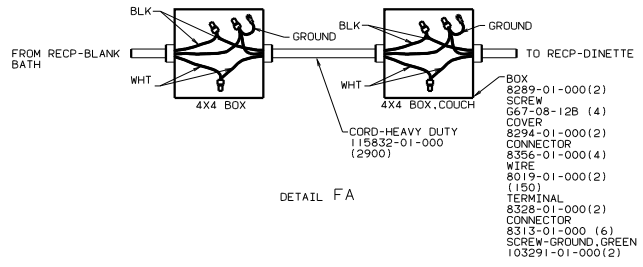
1. ALL GROUND WIRES TO BE COVERED WITH TUBING 8041-02-000.

FOR ELECTRICAL TORQUE SPECIFICATIONS SEE DWG NO 128783-01-000

(X-X) FOR ELECTRICAL CALLOUTS SEE DWG NO 121339-01-000

99 G37G
1B1 CODE STANDARDS-USA
12D ELECTRICAL SYS-30 AMP

WIRING INSTL-BODY (30 LC US)
SHEET 5 of 24
130060



- ⑤ WIRE ROUTED THRU SIDEWALL.
- ④ WIRE IN SIDEWALL.
- ③ WIRE ROUTED BELOW FLOOR.

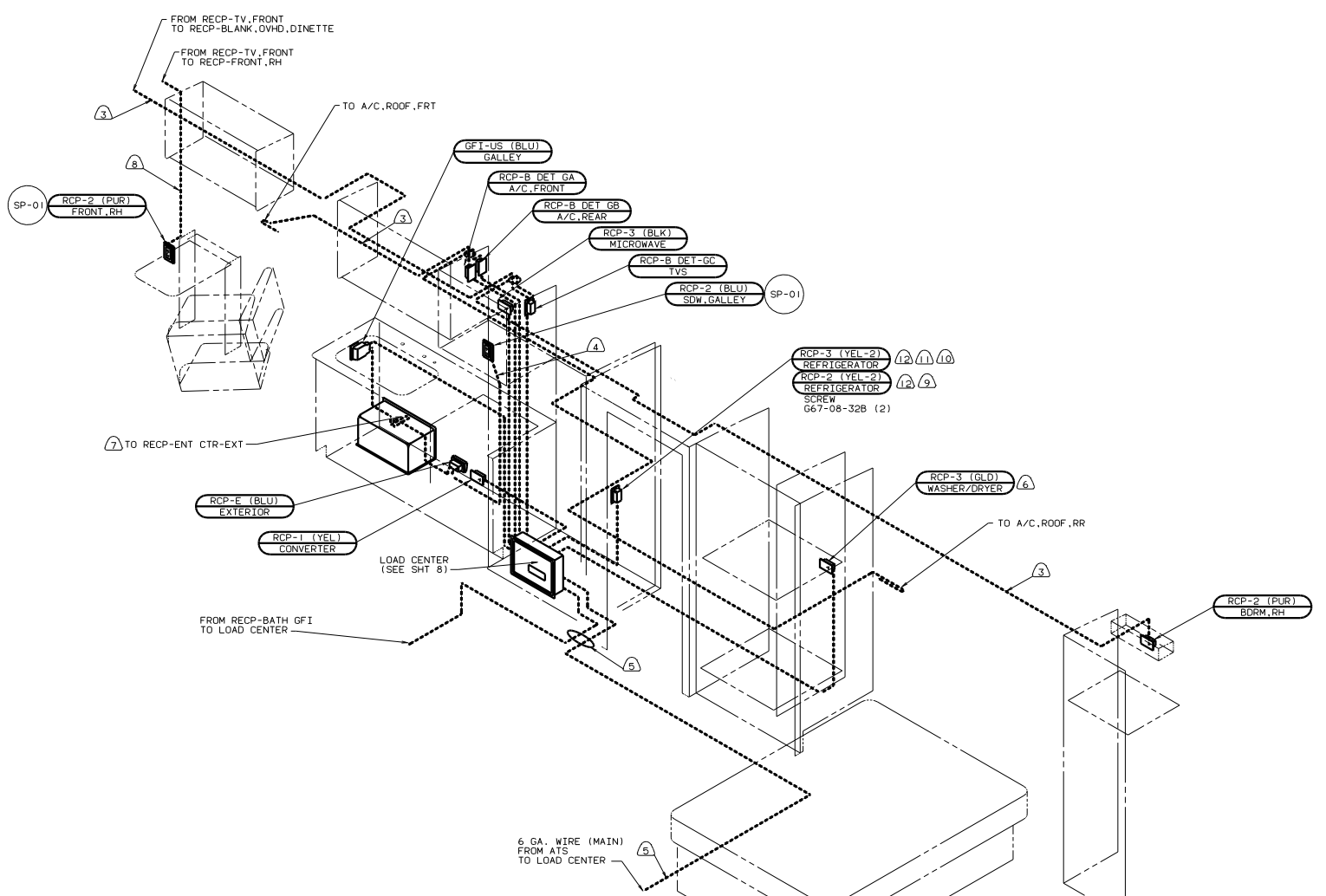
2. ALL WIRES ARE TO BE CLAMPED WITH CLAMP 10497-05-000 WITHIN 200 OF OUTLET BOXES. USE SCREW 667-10-12B.
1. ALL WIRES TO BE CLAMPED WITH CLAMP 10495-01-000 OR CLIP 80734-02-000 EVERY 600. USE SCREW 667-10-12B UNLESS OTHERWISE SPECIFIED.

NOTES:

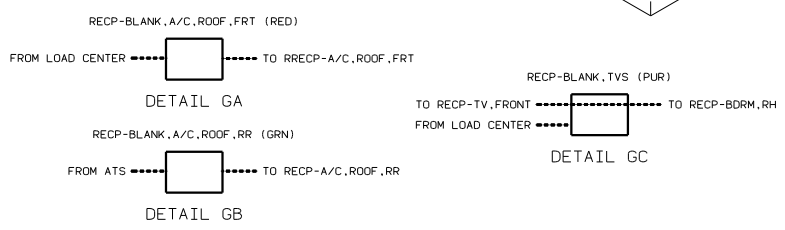
| | | |
|--|-------|---|
| FOR ELECTRICAL TORQUE SPECIFICATIONS SEE DWG NO. 128783-01-000 | (X-X) | FOR ELECTRICAL CALLOUTS SEE DWG NO. 121339-01-000 |
|--|-------|---|

99 G37G
LEFT SIDE
IBI CODES/STANDARDS USA
78J ELECTRICAL SYS-50 AMP

| | | |
|------------------------------|--------------|---------|
| TITLE | | DATE |
| WIRING INSTL-BODY (110150US) | | 1.0 |
| NO. OF SHEETS | TOTAL SHEETS | DWG NO. |
| 6 | 24 | 130060 |



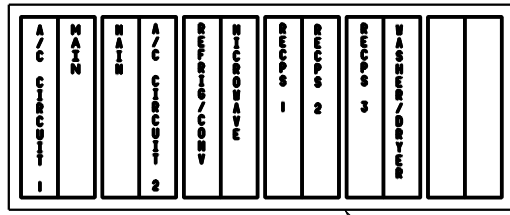
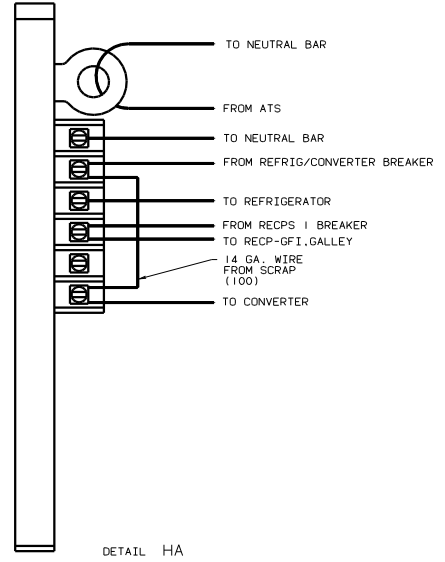
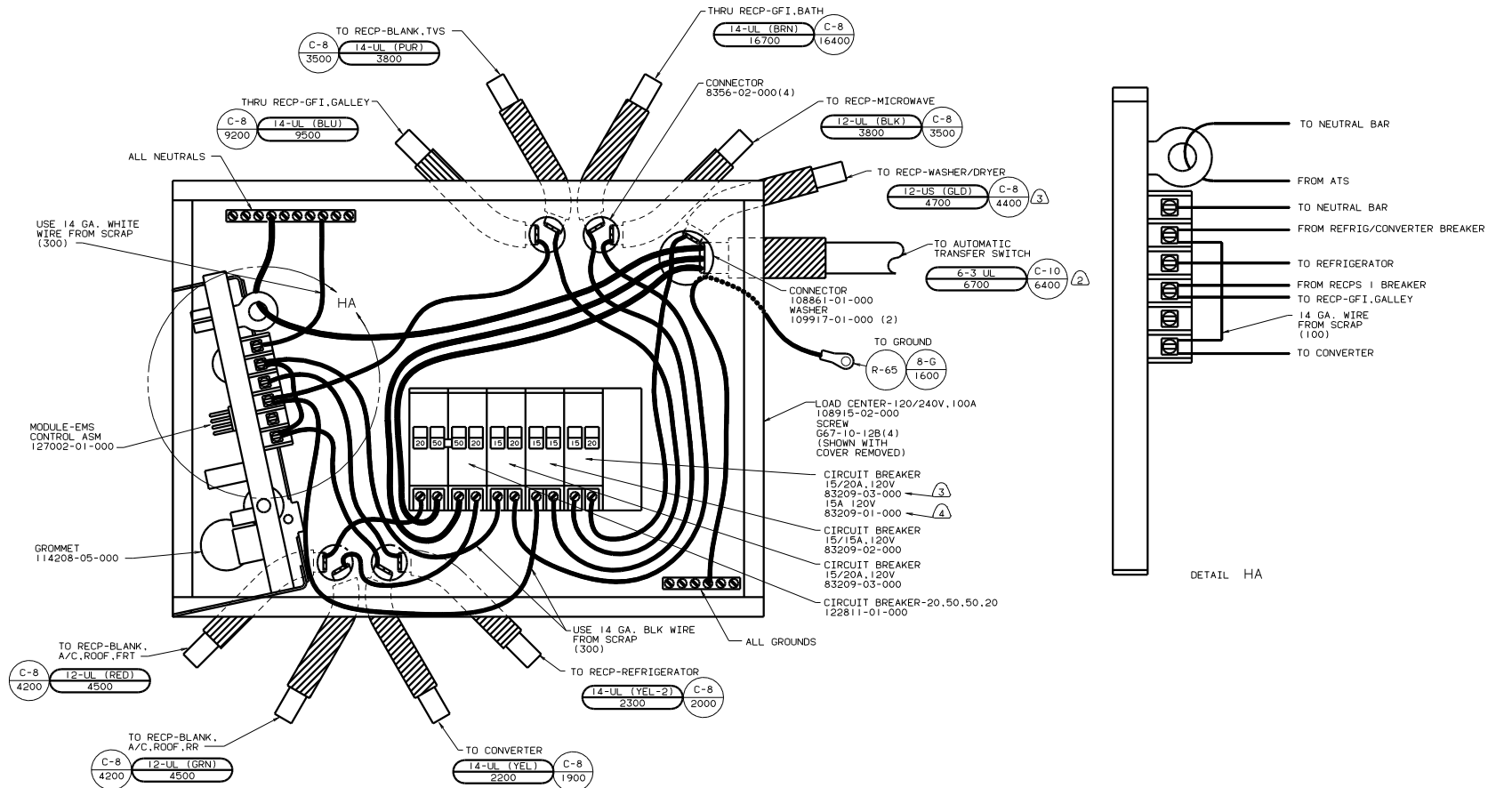
- ⑫ LOCATE REFRIGERATOR RECEPTACLE ON TIEDOWN BRACKET.
 - ⑪ 15U REFRIG-WITH ICEMAKER
 - ⑩ 144 REFG-DOUBLE DOOR
 - ⑨ 15Y REFRIG/FRZR SIDE/SIDE
 - ⑧ WIRE IN SIDEWALL.
 - ⑦ 76C ENT CTR-EXT W/CSETTE OR 105 ENT CTR-EXT W/CD.
 - ⑥ 54E WASHER/DRYER
 - ⑤ WIRE ROUTED BELOW FLOOR.
 - ④ WIRE ROUTED THRU SIDEWALL.
 - ③ WIRE IN ROOF.
2. ALL WIRES ARE TO BE CLAMPED WITH CLAMP 10495 WITHIN 200 OF OUTLET BOXES. USE SCREW G67-10-12B.
1. ALL WIRES TO BE CLAMPED WITH CLAMP 10495-01-000 OR CLIP 80734-02-000 EVERY 600. USE SCREW G67-10-12B UNLESS OTHERWISE SPECIFIED.



X-X FOR ELECTRICAL CALL-OUTS. SEE DWG NO 121339-01-000

99 G37G
RIGHT SIDE
181 CODES/STANDARDS USA
78J ELECTRICAL SYS-50 AMP

| | | | |
|-----------------------------|--|---------------|--|
| TITLE | | DRAWING NO | |
| WIRING INSTL-BODY(11OR50US) | | 121339-01-000 | |
| SHEET 7 of 24 | | JOB NO 130060 | |



INSTALL LABEL ON FRONT PANEL BELOW BREAKERS BETWEEN MOUNTING HOLES

- ④ W/O 54E WASHER/DRYER
- ③ 54E WASHER/DRYER
- ② WIRE MUST BE 700 LONG INSIDE BOX.

1. ALL GROUND WIRES TO BE COVERED WITH TUBING 8041-02-000.

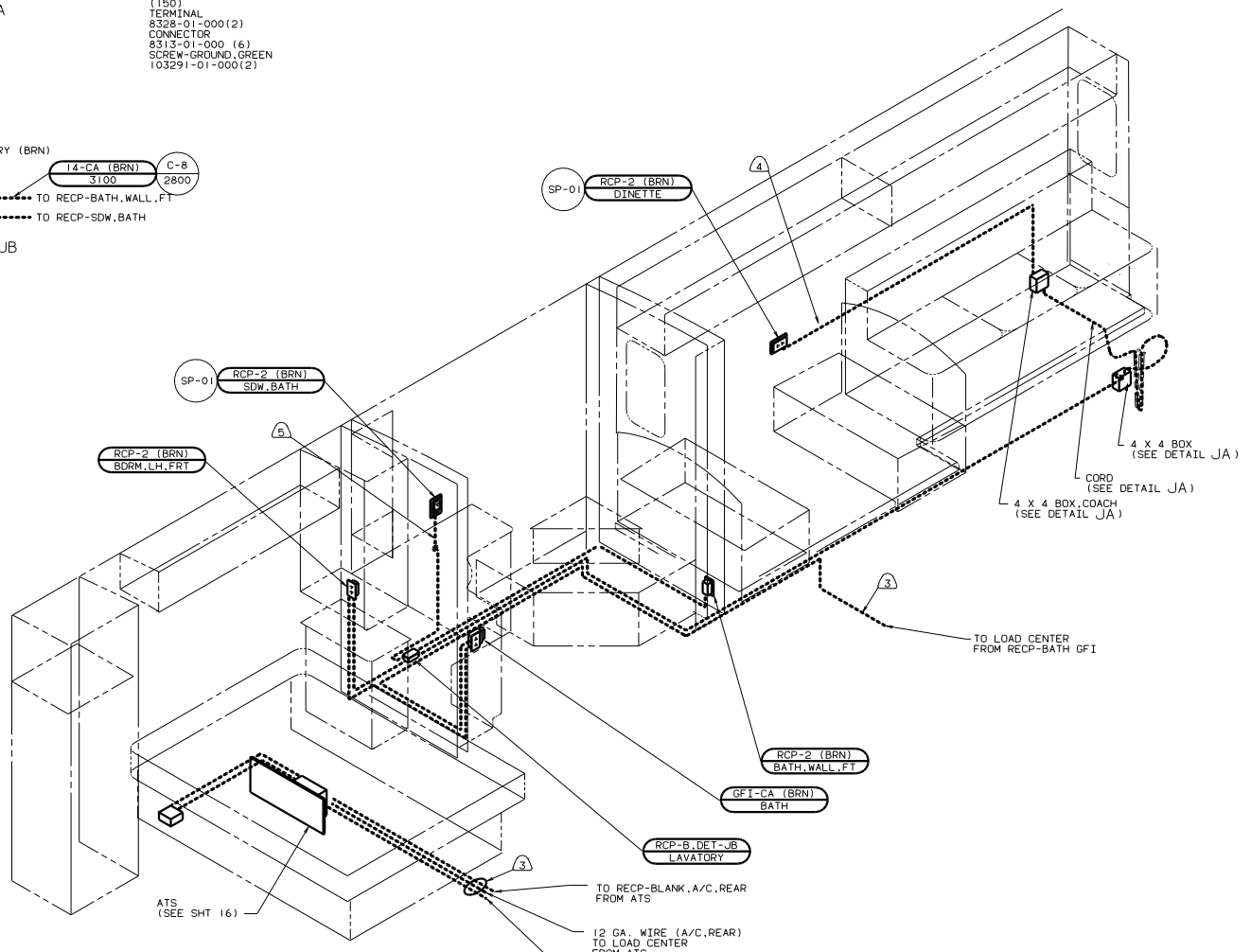
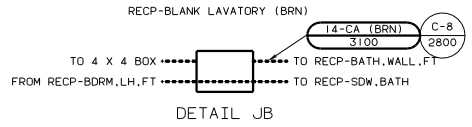
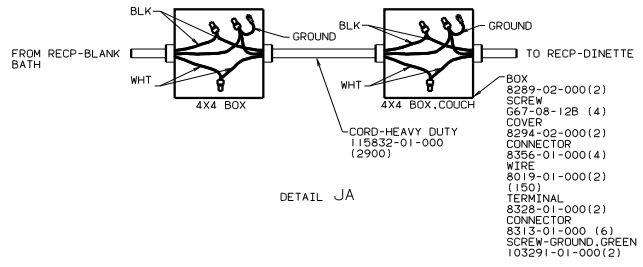
NOTES:

FOR ELECTRICAL TORQUE SPECIFICATIONS SEE DWG NO. 128783-01-000

(X-X) FOR ELECTRICAL CALLOUTS SEE DWG NO. 121339-01-000

99 G37G
1B1 CODE STANDARDS-USA
78J ELECTRICAL SYS-50 AMP

WIRING INSTL-BODY(50 LC US)
SHEET 8 OF 24
130060



- ⑤ WIRE ROUTED THRU SIDEWALL.
- ④ WIRE IN SIDEWALL.
- ③ WIRE ROUTED BELOW FLOOR.

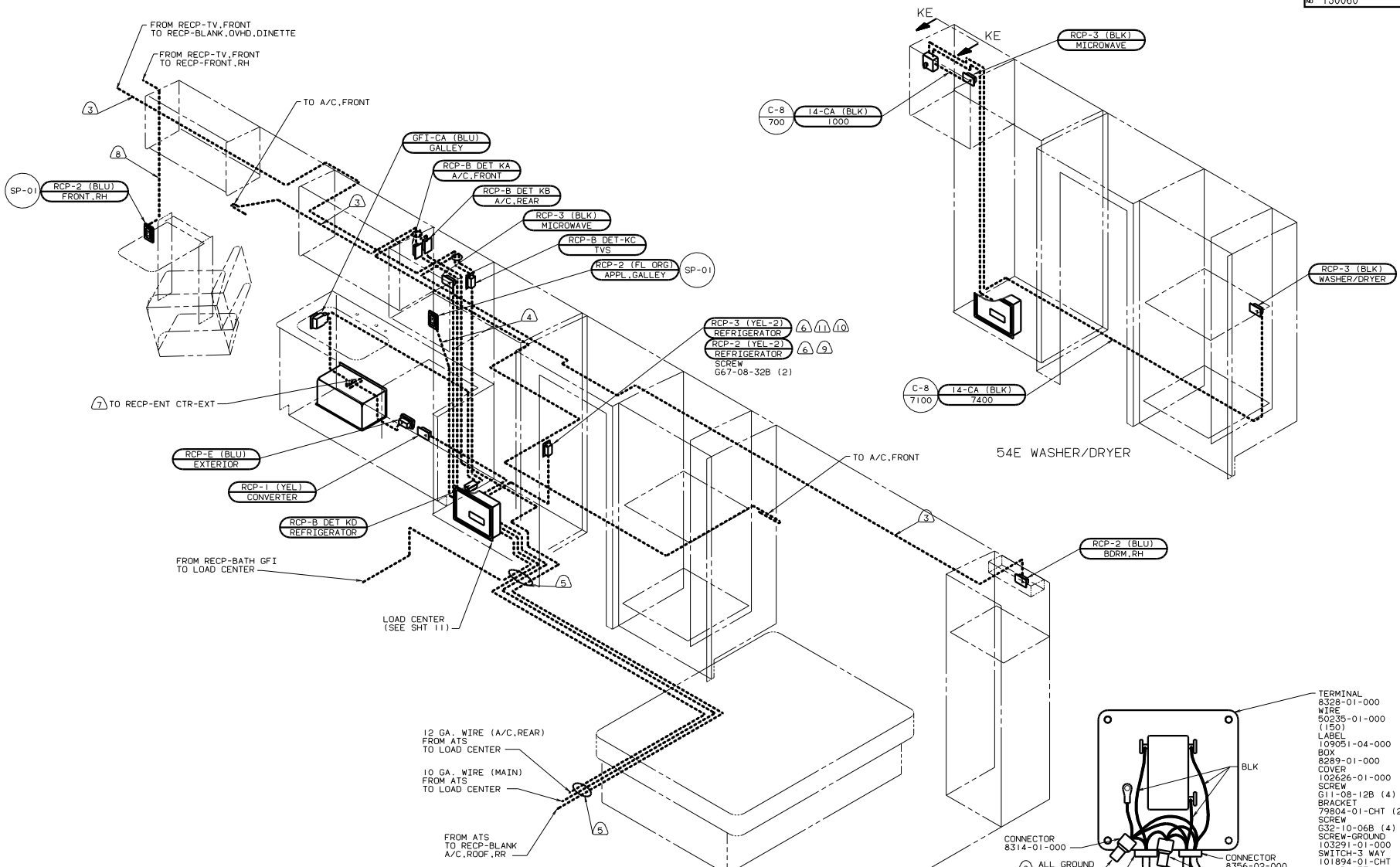
2. ALL WIRES ARE TO BE CLAMPED WITH CLAMP 10497-05-000 WITHIN 200 OF OUTLET BOXES. USE SCREW 667-10-12B.
1. ALL WIRES TO BE CLAMPED WITH CLAMP 10495-01-000 OR CLIP 80734-02-000 EVERY 600. USE SCREW 667-10-12B UNLESS OTHERWISE SPECIFIED.

NOTES:

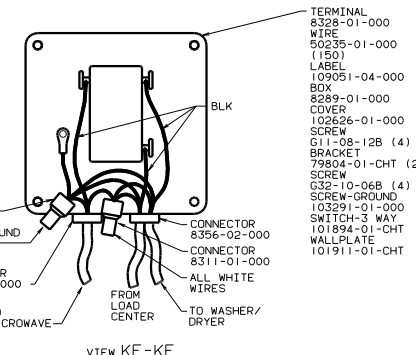
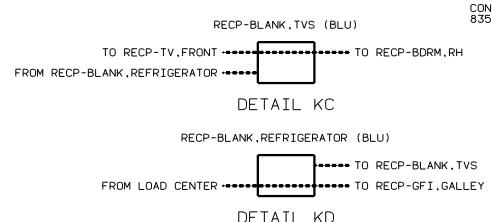
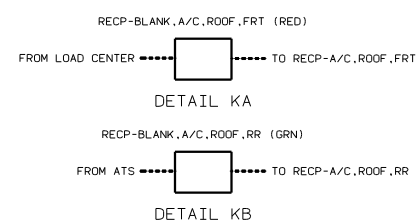
| | |
|--|---|
| FOR ELECTRICAL TORQUE SPECIFICATIONS SEE DWG NO. 128783-01-000 | FOR ELECTRICAL CALLOUTS SEE DWG NO. 121339-01-000 |
|--|---|

99 G37G
LEFT SIDE
265 CODES/STANDARDS CSA
12D ELECTRICAL SYS-30 AMP

| | |
|---------------|------------------------------|
| FILE | WIRING INSTL-BODY (110130CA) |
| NO. OF SHEETS | 16 |
| SHEET NO. | 9 OF 24 |
| REV | 1.0 |
| DATE | 130060 |



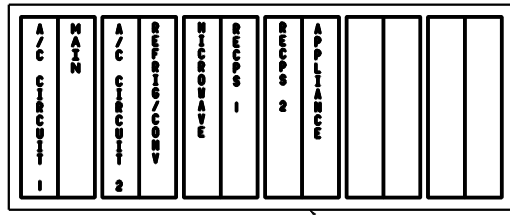
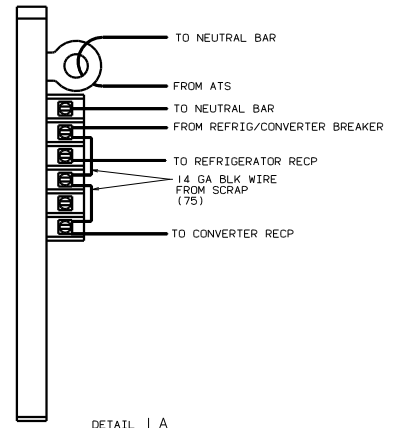
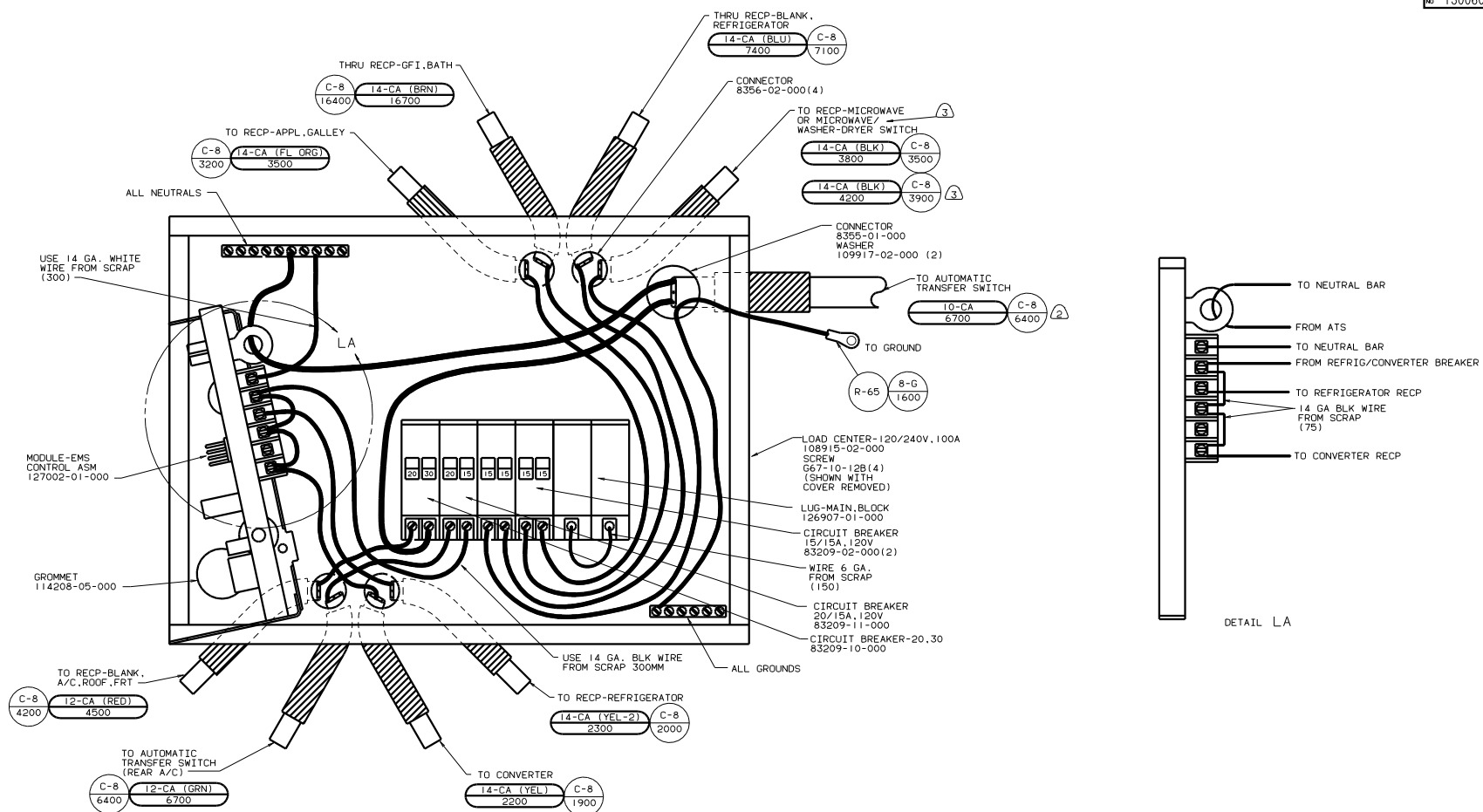
- (11) 15U REFRIG-WITH ICEMAKER
 - (10) 144 REFG-DOUBLE DOOR
 - (9) 15Y REFRIG/FRZR SIDE/SIDE
 - (8) WIRE IN SIDEWALL.
 - (7) 76C ENT CTR-EXT W/CSETTE OR 105 ENT CTR-EXT W/C.D.
 - (6) LOCATE REFRIGERATOR RECEPTACLE ON TIEDOWN BRACKET.
 - (5) WIRE ROUTED BELOW FLOOR.
 - (4) WIRE ROUTED THRU SIDEWALL.
 - (3) WIRE IN ROOF.
2. ALL WIRES ARE TO BE CLAMPED WITH CLAMP 10495 WITHIN 200 OF OUTLET BOXES. USE SCREW G67-10-12B.
1. ALL WIRES TO BE CLAMPED WITH CLAMP 10495-01-000 OR CLIP 80734-02-000 EVERY 600. USE SCREW G67-10-12B UNLESS OTHERWISE SPECIFIED.



(X-X) FOR ELECTRICAL CALLOUTS SEE DWG NO 121339-01-000

99 G37G
RIGHT SIDE
265 CODES/STANDARDS CSA
12D ELECTRICAL SYS-30 AMP

| | |
|-----------------|------------------------------|
| FIGURE | WIRING INSTL-BODY (110R30CA) |
| NO. OF SHEETS | 16 |
| SHEET NO. OF 24 | 16 |
| DATE | 130060 |



LABEL 95721-28-000

INSTALL LABEL ON FRONT PANEL BELOW BREAKERS BETWEEN MOUNTING HOLES

- 3 54E WASHER/DRYER
- 2 WIRE MUST BE 700 LONG INSIDE BOX
1. ALL GROUND WIRES TO BE COVERED WITH TUBING 8041-02-000.

NOTES:

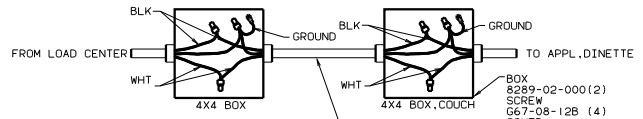
(X-X)

FOR ELECTRICAL CALLOUTS SEE DWS NO. 121339-01-000

99 G37G
12D ELECTRICAL SYS-30AMP
265 CODE STANDARDS-CSA

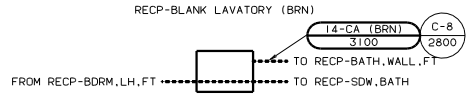
WIRING INSTL-BODY(30 LC CAN)

130060

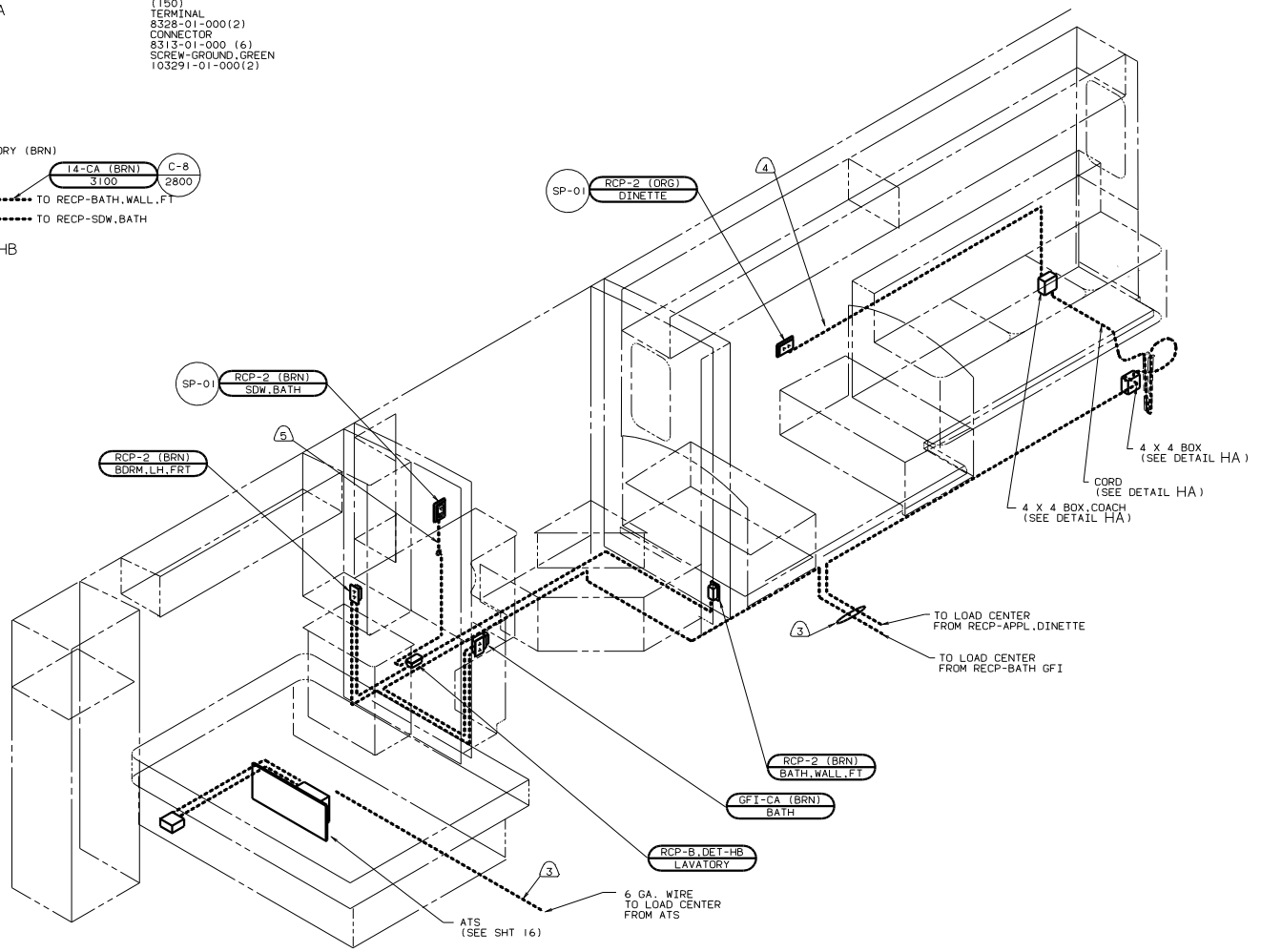


DETAIL HA

- BOX 8289-02-000 (2)
- SCREW 667-08-12B (4)
- COVER 8294-02-000 (2)
- CONNECTOR 8356-01-000 (4)
- WIRE 8019-01-000 (2)
- (150)
- TERMINAL 8328-01-000 (2)
- CONNECTOR 8313-01-000 (6)
- SCREW-GROUND, GREEN 103291-01-000 (2)



DETAIL HB



44X BED-QUEEN SIDEWALL

- ⑤ WIRE ROUTED THRU SIDEWALL.
- ④ WIRE IN SIDEWALL.
- ③ WIRE ROUTED BELOW FLOOR

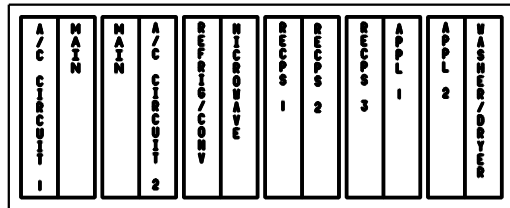
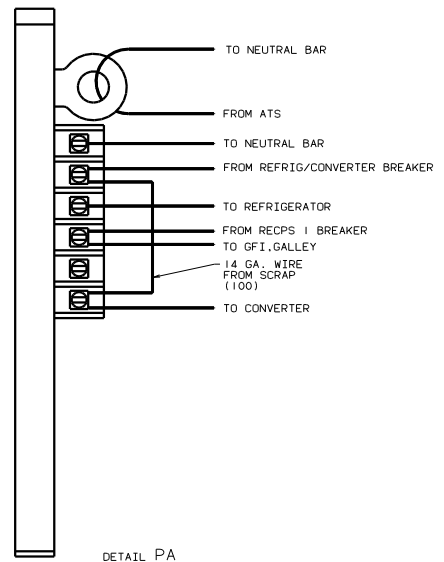
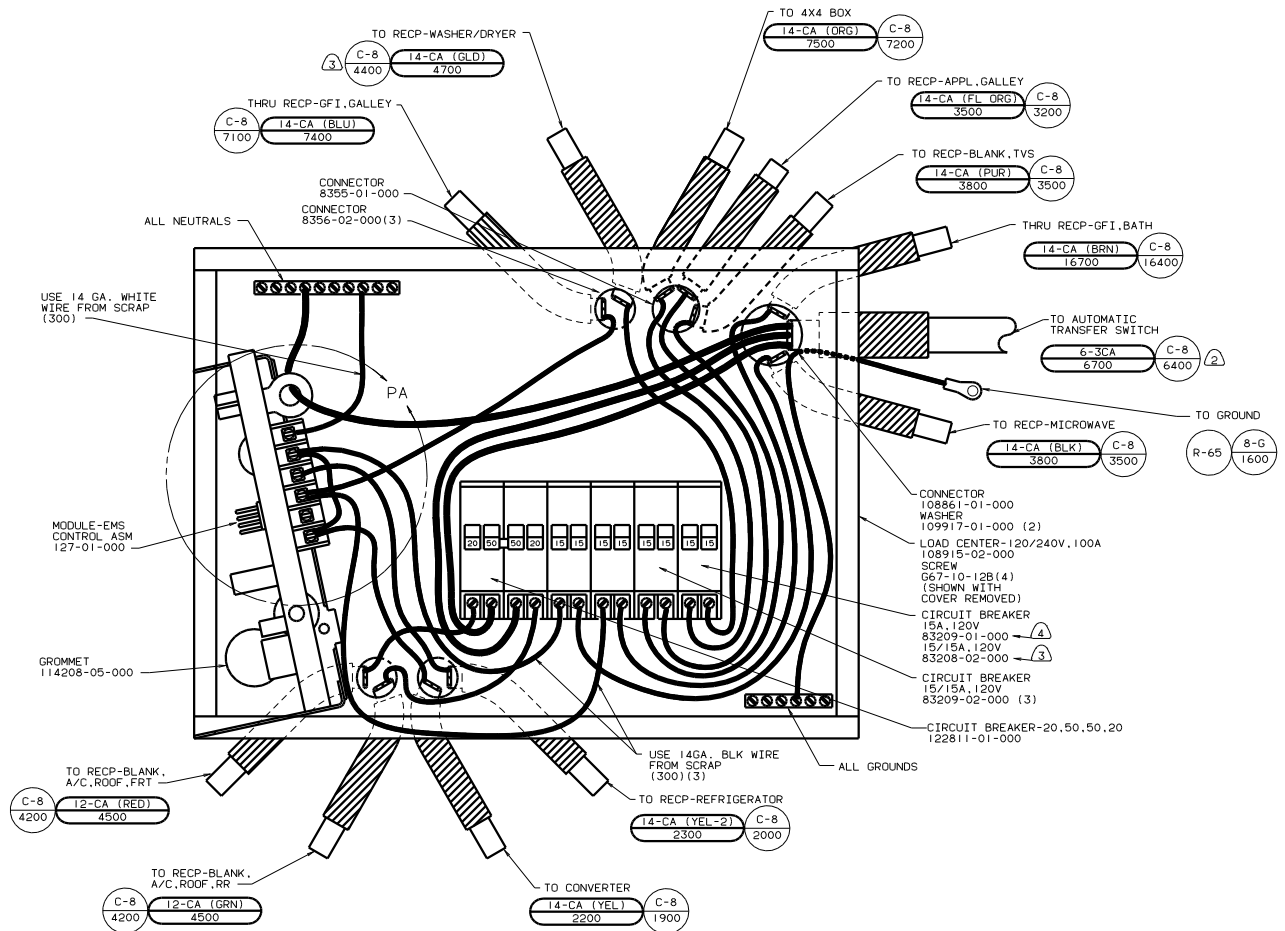
2. ALL WIRES ARE TO BE CLAMPED WITH CLAMP 10497-05-000 WITHIN 200 OF OUTLET BOXES. USE SCREW 667-10-12B.
1. ALL WIRES TO BE CLAMPED WITH CLAMP 10495-01-000 OR CLIP 80734-02-000 EVERY 600. USE SCREW 667-10-12B UNLESS OTHERWISE SPECIFIED.

NOTES:

| | |
|--|---|
| FOR ELECTRICAL TORQUE SPECIFICATIONS SEE DWG NO. 128783-01-000 | FOR ELECTRICAL CALLOUTS SEE DWG NO. 121339-01-000 |
|--|---|

99 G37G
LEFT SIDE
265 CODES/STANDARDS CSA
78J ELECTRICAL SYS-50 AMP

| | | | |
|---------------|--------------|--------|------|
| TITLE | | 130060 | |
| NO. OF SHEETS | TOTAL SHEETS | DATE | REV. |
| 12 | 24 | | 1 |



LABEL 95721-30-000

INSTALL LABEL ON FRONT PANEL BELOW BREAKERS BETWEEN MOUNTING HOLES

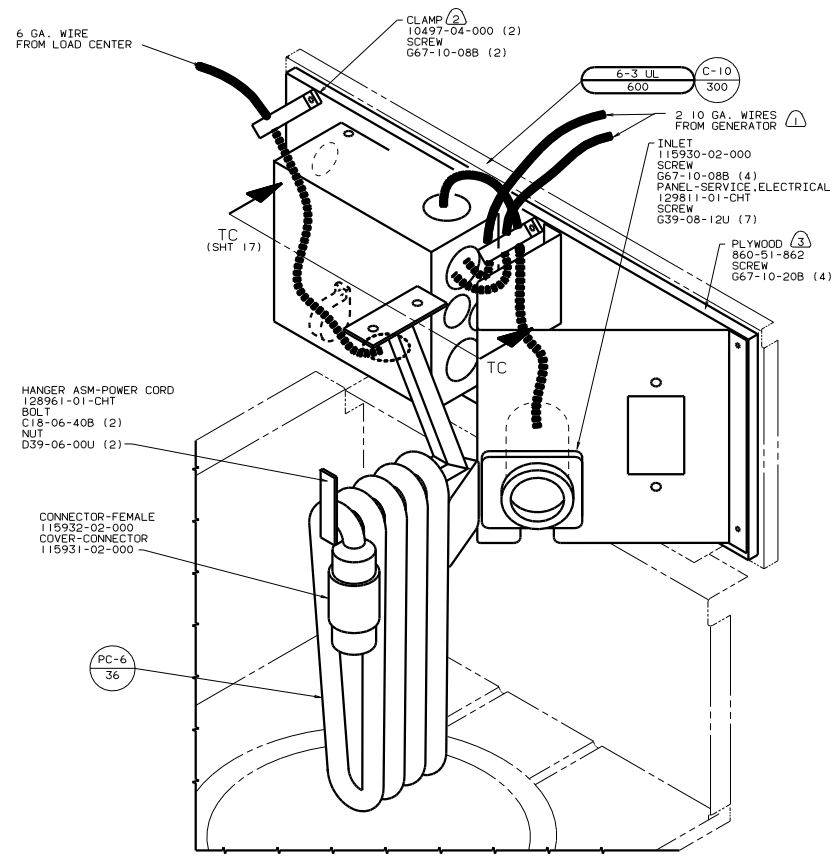
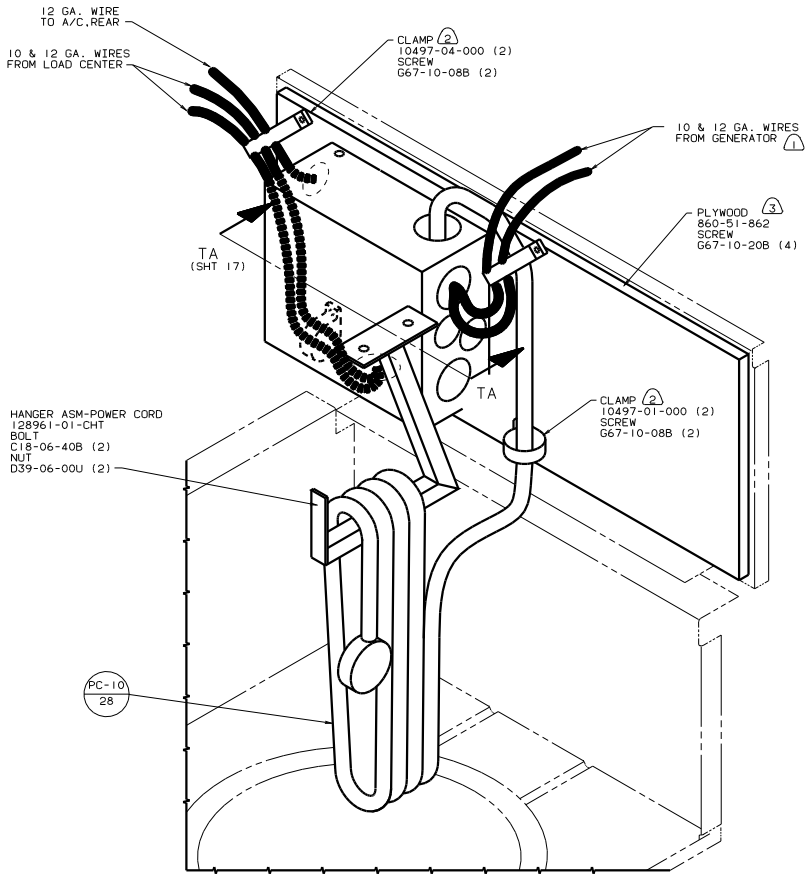
- ④ W/O 54E WASHER/DRYER
- ③ 54E WASHER/DRYER
- ② WIRE MUST BE 700 LONG INSIDE BOX.

1. ALL GROUND WIRES TO BE COVERED WITH TUBING 8041-02-000.

(X-X)
FOR ELECTRICAL CALLOUTS SEE DWG NO. 121339-01-000

99 G37G
78J ELECTRICAL SYS-50 AMP
265 CODE STANDARDS-CSA

| | | | |
|------------------------------|------|--------|----|
| TITLE | | 130060 | |
| WIRING INSTL-BODY(50 LC CAN) | | REV | NO |
| 30 X 30 SCALE | DATE | 14 | 24 |
| DRAWN | | 130060 | |



- (3) PAINT EXPOSED SURFACES BLACK 106112-01-000.
- (2) ALL WIRES TO BE CLAMPED WITHIN 200 OF BOX
- (1) WITH GENERATOR

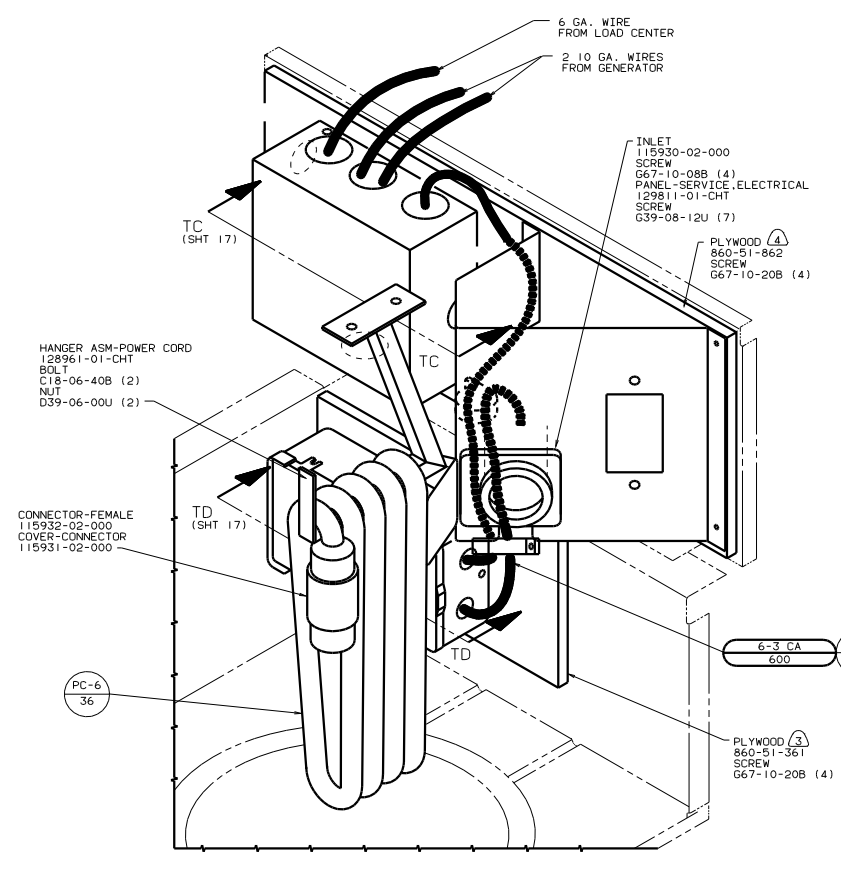
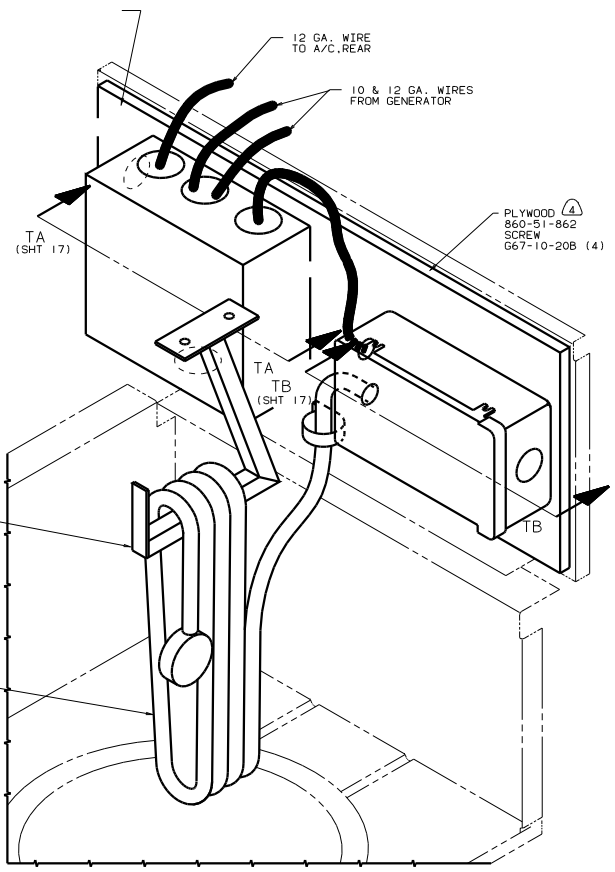
12D ELECTRICAL SYS-30 AMP

78J ELECTRICAL SYS-50 AMP

| | | |
|--|-----|---|
| FOR ELECTRICAL TORQUE SPECIFICATIONS SEE DWG NO. 128783-01-000 | X-X | FOR ELECTRICAL CALLOUTS SEE DWG NO. 121339-01-000 |
|--|-----|---|

POWER CORD INLET
IE3 ENERGY MGMT SYS
IBI CODE STANDARDS-USA

| | |
|-------------------------------|----------------|
| TITLE: WIRING INSTL-BODY(PCI) | DWG NO: 130060 |
| NO. OF SHEETS: 24 | SHEET 15 OF 24 |



- (A) PAINT EXPOSED SURFACES BLACK WITH 106112-01-000.
3. ALL 110V STRANDED WIRE W/O TERMINALS TO BE STRIPPED 10MM AND SOLDER DIPPED.
2. GROUND WIRES NOT SHOWN FOR CLARITY.
1. ALL WIRES TO BE CLAMPED WITHIN 200 OF BOX.

12D ELECTRICAL SYS-30 AMP

78J ELECTRICAL SYS-50 AMP

| | | |
|--|-----|---|
| FOR ELECTRICAL TORQUE SPECIFICATIONS SEE DWG NO. 128783-01-000 | X-X | FOR ELECTRICAL CALLOUTS SEE DWG NO. 121339-01-000 |
|--|-----|---|

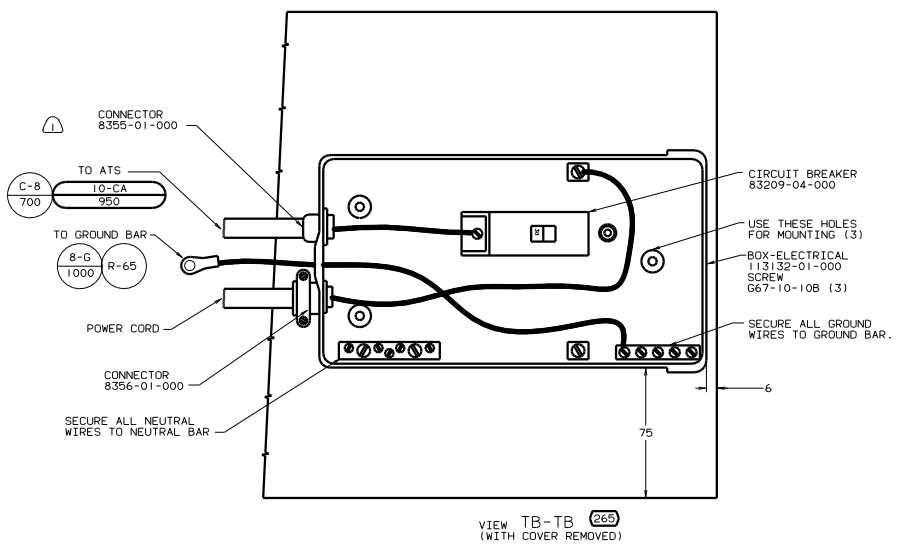
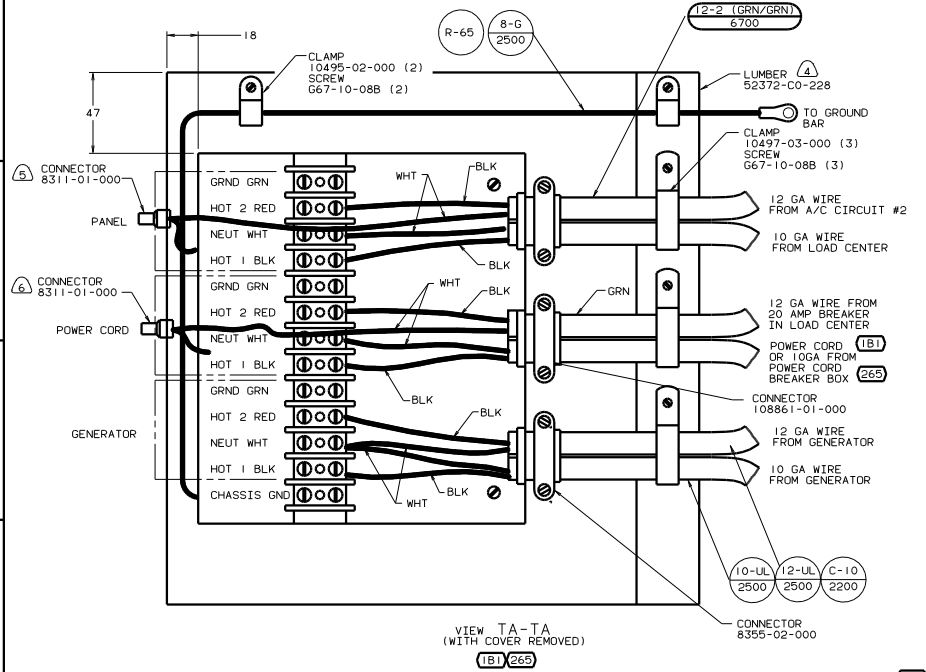
POWER CORD INLET
1E3 ENERGY MGMT SYS
265 CODE STANDARDS-CSA

TITLE: WIRING INSTL-BODY(PCI)

NO. OF SHEETS: 24 SHEET 16 OF 24

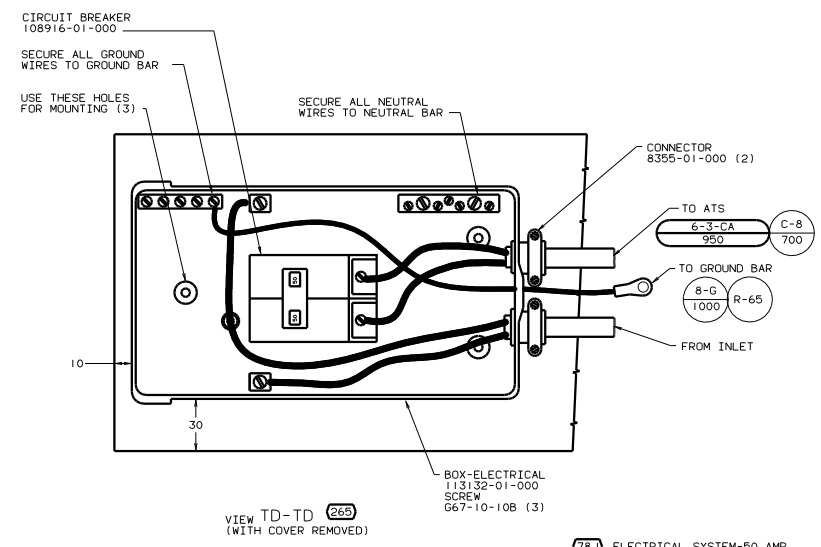
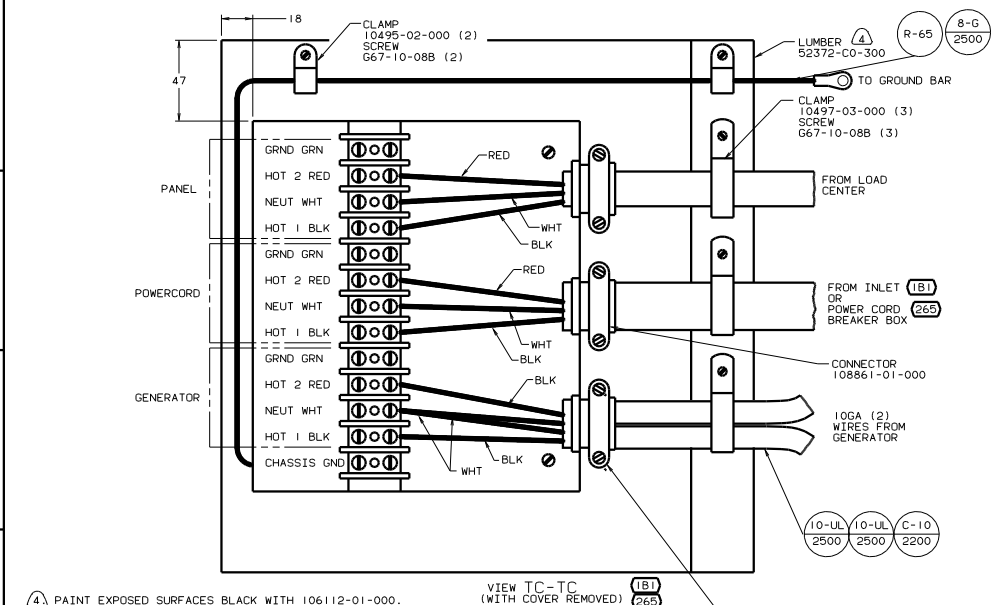
DATE: 1/6/00

130060



VIEW TA-TA (WITH COVER REMOVED) (1B1) (265)

VIEW TB-TB (WITH COVER REMOVED) (265)



VIEW TC-TC (WITH COVER REMOVED) (1B1) (265)

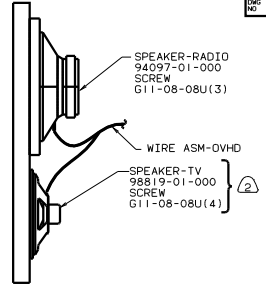
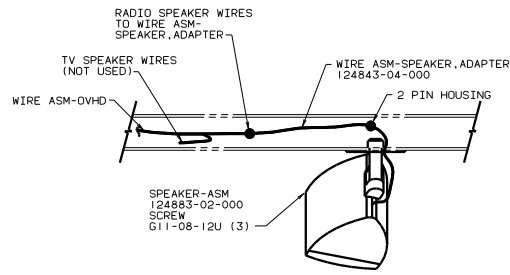
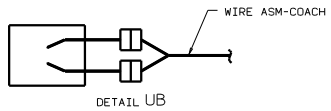
VIEW TD-TD (WITH COVER REMOVED) (265)

- (4) PAINT EXPOSED SURFACES BLACK WITH 106112-01-000.
- 3. ALL 110V STRANDED WIRE W/O TERMINALS TO BE STRIPPED 10MM AND SOLDER DIPPED.
- 2. GROUND WIRES NOT SHOWN FOR CLARITY.
- 1. ALL WIRES TO BE CLAMPED WITH IN 200 OF BOX.

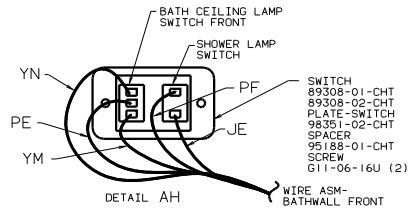
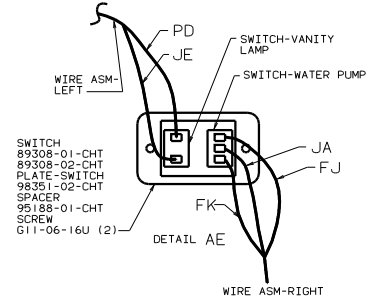
- (6) FOR THIS CONNECTION REMOVE NEUTRAL WIRE MARKED BLUE FROM CONNECTIONS MARKED POWER CORD.
- (5) FOR THIS CONNECTION REMOVE NEUTRAL WIRE MARKED BLUE FROM CONNECTIONS MARKED PANEL.

(78J)

- (78J) ELECTRICAL SYSTEM-50 AMP
- (265) CODES/STANDARDS-CSA/CMVSS
- (12D) ELECTRICAL SYSTEM 30 AMP
- (1B1) CODES/STANDARDS USA



3) DETAIL UA-UA



VIEW UA-UA 4

- 7) LAMP-DECTORATOR 87140-08-CHT BULB 117806-01-000 SCREW G67-10-12B (2) CONNECTOR 58028-01-000 (2)
- 8) LAMP 87140-01-CHT SHADE 119257-01-CHT BULB 67479-01-000 (2) SCREW G67-10-24J (2) CONNECTOR 58028-01-000 (2)

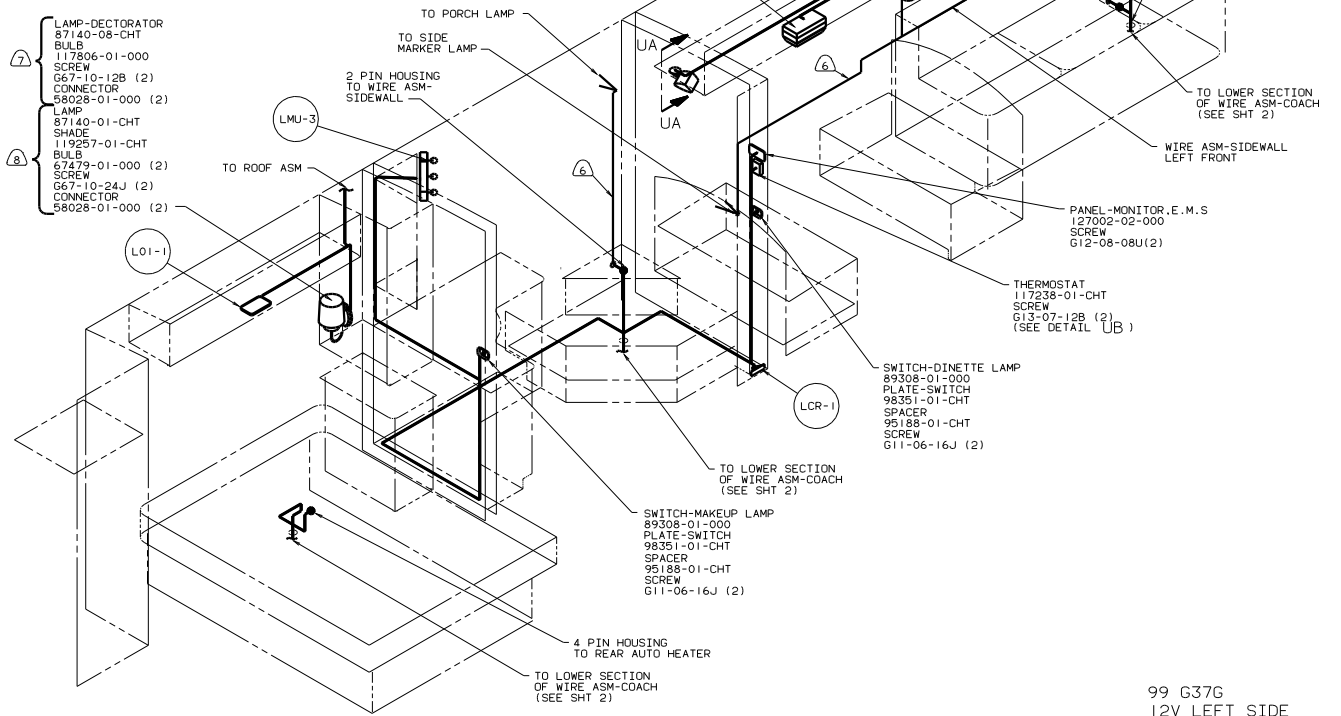
WIRE ASM-OVHD FRONT LH 127733-01-000

LM02-1

GROMMET 23942-02-000(2) SEAL

LAMP 93575-06-CHT CONNECTOR 58028-01-000 (2)

- 7) LAMP-DECTORATOR 87140-08-CHT BULB 117806-01-000 SCREW G67-10-12B (2) CONNECTOR 58028-01-000 (2)
- 8) LAMP 87140-01-CHT SHADE 119257-01-CHT BULB 67479-01-000 (2) SCREW G67-10-24J (2) CONNECTOR 58028-01-000 (2)



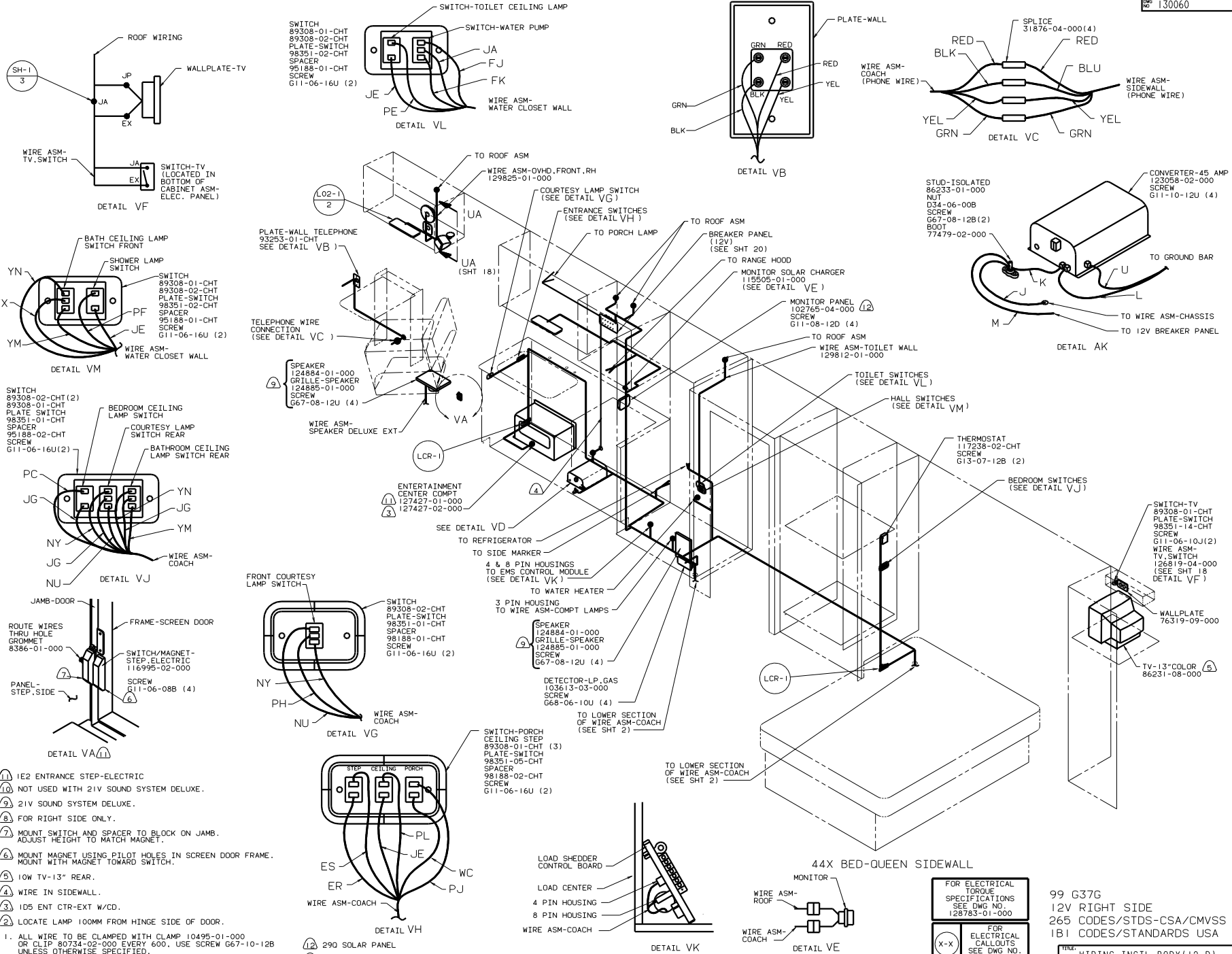
44X BED-QUEEN SIDEWALL

- 4) USE ON WINNEBAGO UNITS.
- 7) USE ON ITASCA UNITS.
- 6) WIRE IN SIDEWALL.
- 5) INSERT ONE GROMMET FROM TOP AND ONE FROM BOTTOM OF SLIDEDOUT ROOM.
- 4) 21V SOUND SYSTEM DELUXE.
- 3) NOT USED WITH 21V SOUND SYSTEM DELUXE.
- 2) 210 TV-19" W/VCR/SWITCHING SYSTEM OR 42T TV-19" W/REMOTE.

1. ALL WIRE TO BE CLAMPED WITH CLAMP 10495-01-000 OR CLIP 80734-02-000 EVERY 600. USE SCREW G67-10-12B UNLESS OTHERWISE SPECIFIED.

99 G37G
12V LEFT SIDE
265 CODES/STDS-CSA/CMVSS
1B1 CODES/STANDARDS USA

| | | |
|--|-----|---|
| FOR ELECTRICAL TORQUE SPECIFICATIONS SEE DWG NO. 128783-01-000 | X-X | FOR ELECTRICAL CALLOUTS SEE DWG NO. 121339-01-000 |
|--|-----|---|

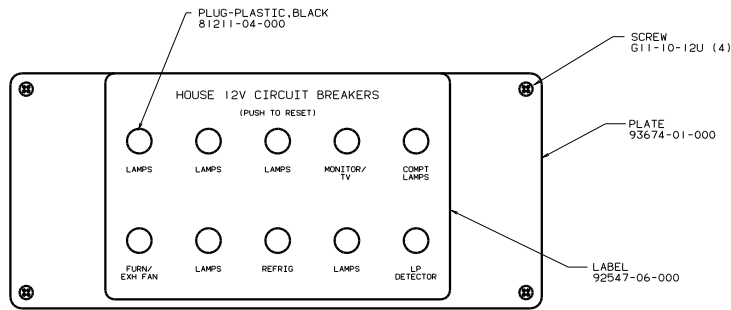


- ① 1E2 ENTRANCE STEP-ELECTRIC
- ⑩ NOT USED WITH 21V SOUND SYSTEM DELUXE.
- ⑨ 21V SOUND SYSTEM DELUXE.
- ⑧ FOR RIGHT SIDE ONLY.
- ⑦ MOUNT SWITCH AND SPACER TO BLOCK ON JAMB. ADJUST HEIGHT TO MATCH MAGNET.
- ⑥ MOUNT MAGNET USING PILOT HOLES IN SCREEN DOOR FRAME. MOUNT WITH MAGNET TOWARD SWITCH.
- ⑤ 10W TV-13" REAR.
- ④ WIRE IN SIDEWALL.
- ③ 1D5 ENT CTR-EXT W/CD.
- ② LOCATE LAMP 100MM FROM HINGE SIDE OF DOOR.
- 1. ALL WIRE TO BE CLAMPED WITH CLAMP 10495-01-000 OR CLIP 80734-02-000 EVERY 600. USE SCREW G67-10-12B UNLESS OTHERWISE SPECIFIED.

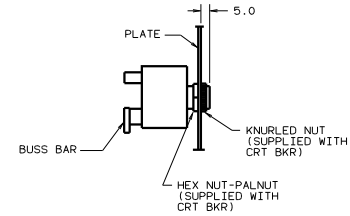
FOR ELECTRICAL TORQUE SPECIFICATIONS SEE DWG NO. 128783-01-000

FOR ELECTRICAL CALLOUTS SEE DWG NO. 121339-01-000

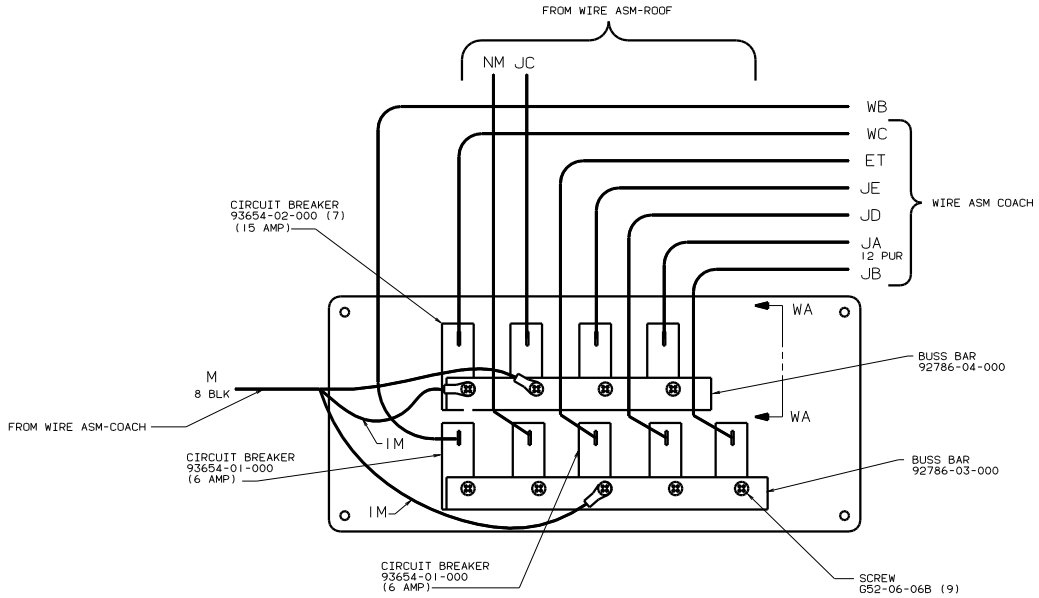
99 G37G
 12V RIGHT SIDE
 265 CODES/STDS-CSA/CMVSS
 1B1 CODES/STANDARDS USA



CIRCUIT BREAKER
(FRONT VIEW)



SECTION WA-WA

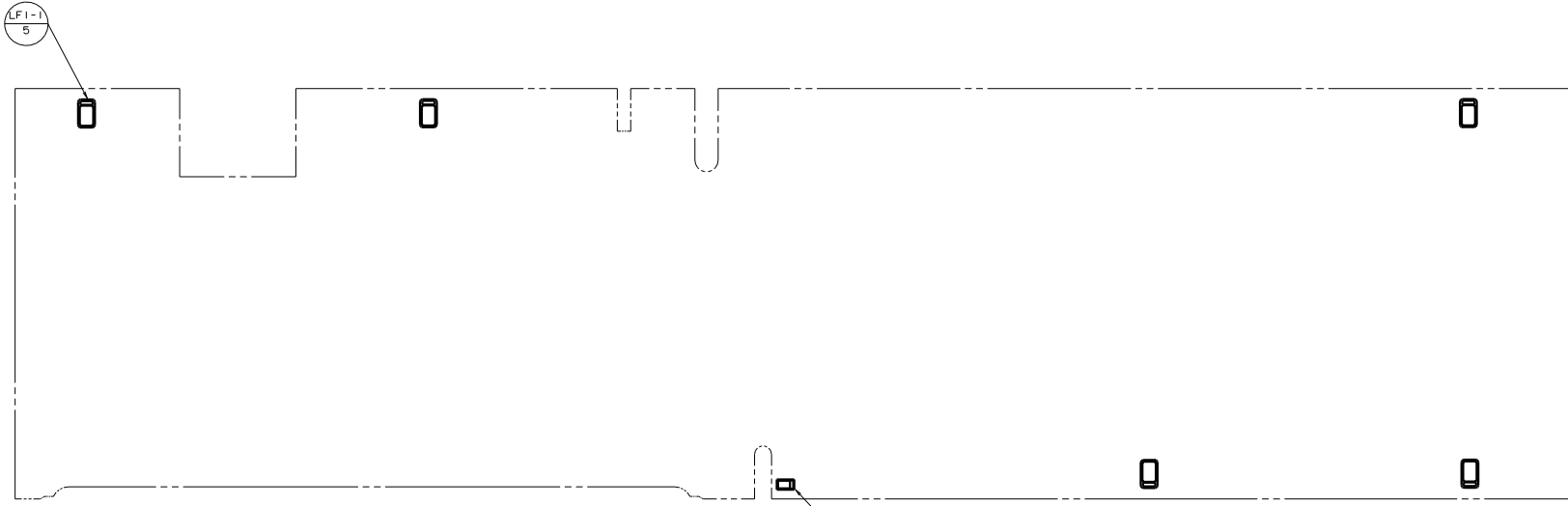
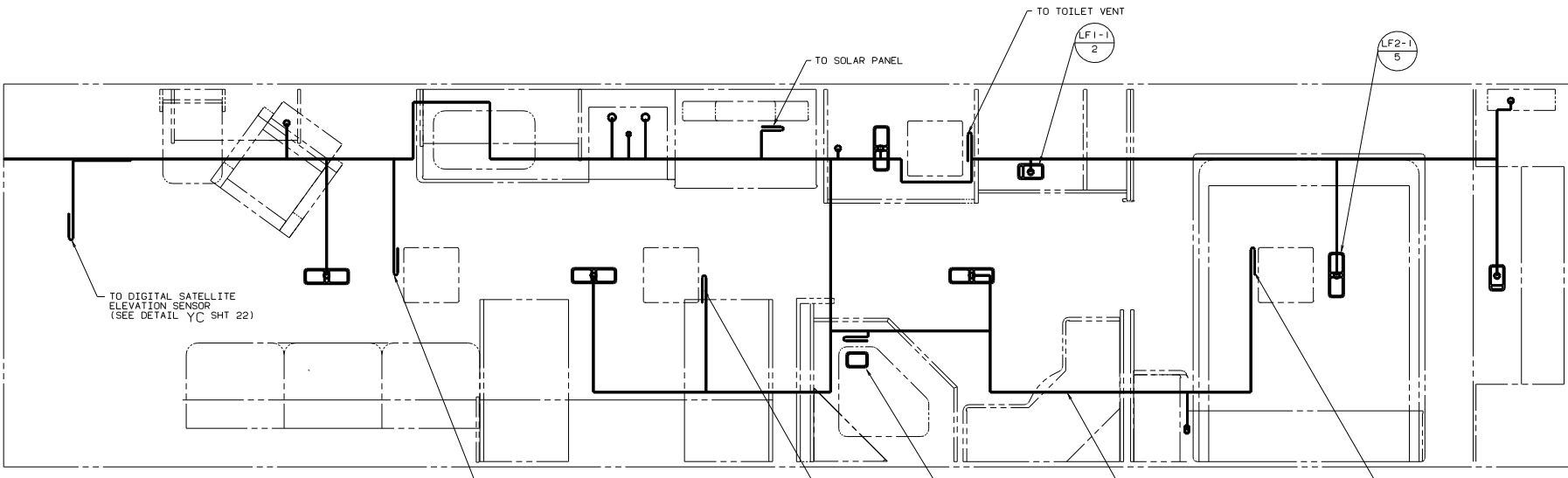


CIRCUIT BREAKER
(BACK VIEW)

99 G37G
12V BREAKER PANEL
265 CODES/STDS-CSA/CMVSS
1B1 CODES/STANDARDS USA

FOR ELECTRICAL
TORQUE
SPECIFICATIONS
SEE DWG NO.
128763-01-000

| | | | |
|----------------------|--------|-------------------|--|
| TITLE | | WIRING INSTL-BODY | |
| 30 PER SCALE DRAWING | FIG | 1 | |
| SHEET 20 of 24 | DWG NO | 130060 | |



⚠ LAMPS TO BE MOUNTED WITH SWITCH OUTBOARD AND 75 +/- 15 FROM EDGE OF FLOOR, UNLESS OTHERWISE SPECIFIED.

⚠ COMPARTMENT LAMPS

LAMP-COMPARTMENT
86280-01-CHT
SCREW
G11-08-128 (2)
CONNECTOR
58028-01-000 (2)

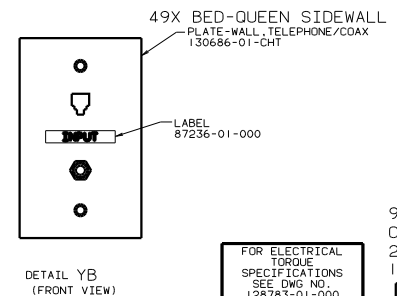
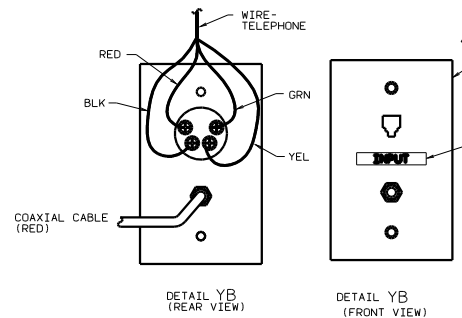
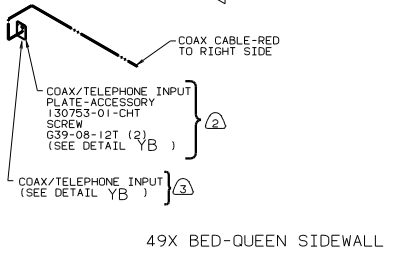
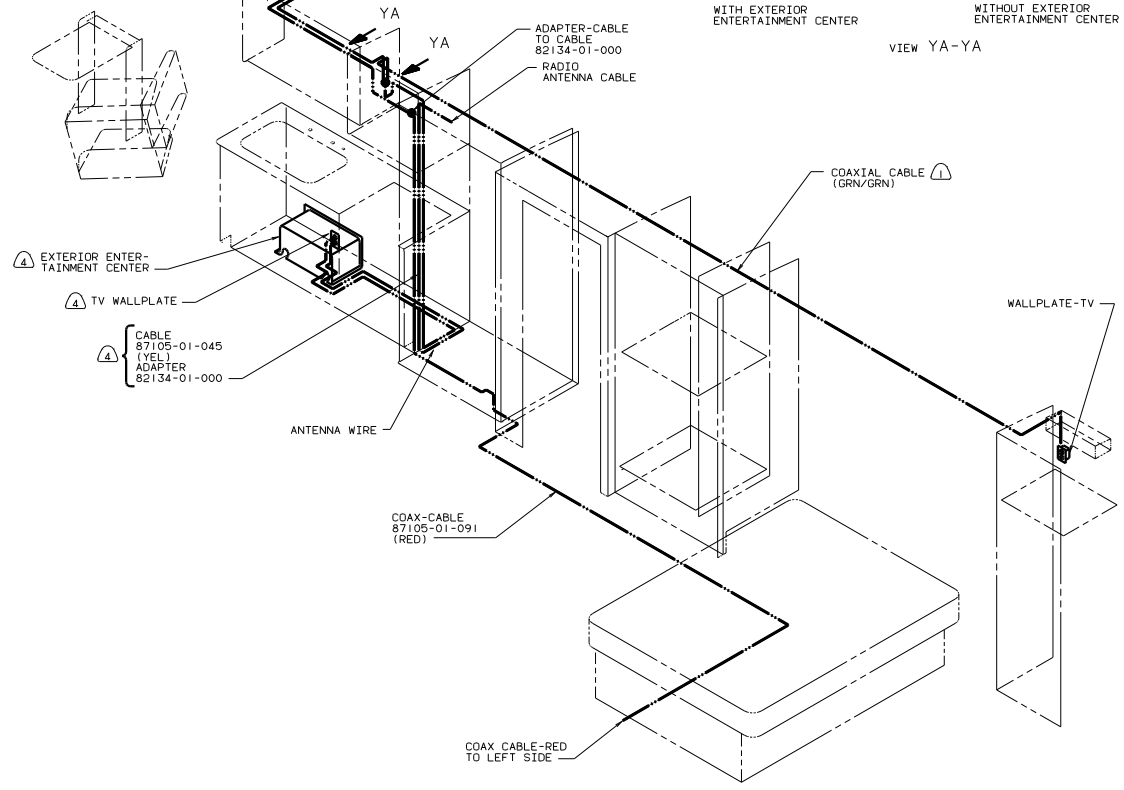
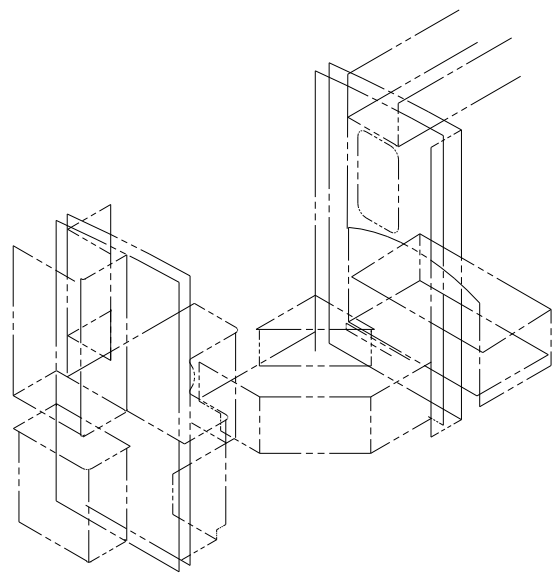
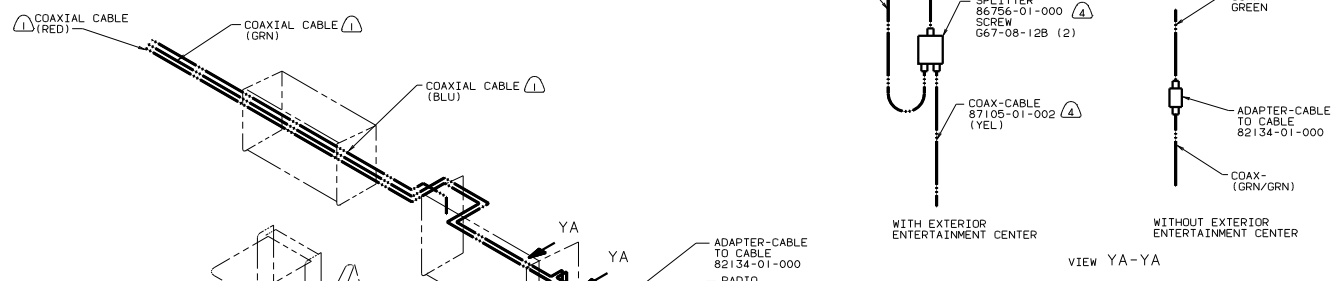
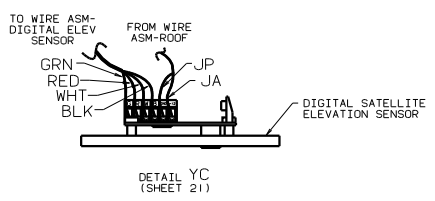
FOR ELECTRICAL TORQUE SPECIFICATIONS SEE DWG NO. 128783-01-000

X-X FOR ELECTRICAL CALLOUTS SEE DWG NO. 121339-01-000

99 G37G
COMPARTMENT LAMPS
265 CODE STANDARDS-CSA
1B1 CODE STANDARDS-USA

WIRING INSTL-BODY(12 CL)

| | | |
|---------------|--------|----------|
| NO. OF SHEETS | TITLE | DWG. NO. |
| 21 of 24 | 130060 | 130060 |

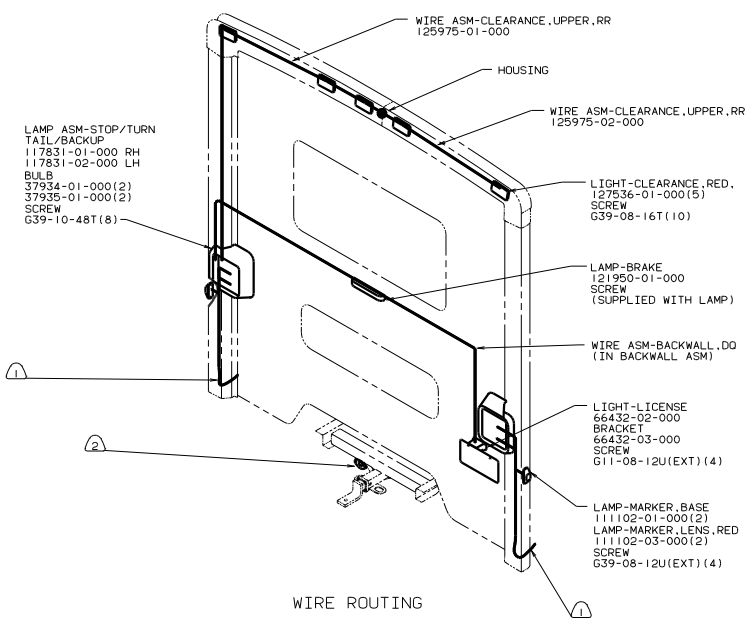


- ④ 76C ENT CTR-EXT W/CSETTE. 105 ENT CTR-EXT W/CD.
- ③ 78J ELECTRICAL SYS-50 AMP.
- ② 12D ELECTRICAL SYS-30 AMP.
- ① WIRE IN ROOF

FOR ELECTRICAL TORQUE SPECIFICATIONS SEE DWG NO 128783-01-000

99 G37G
COAX CABLE
265 CODES/STDS-CSA/CMVSS
1B1 CODES/STANDARDS USA

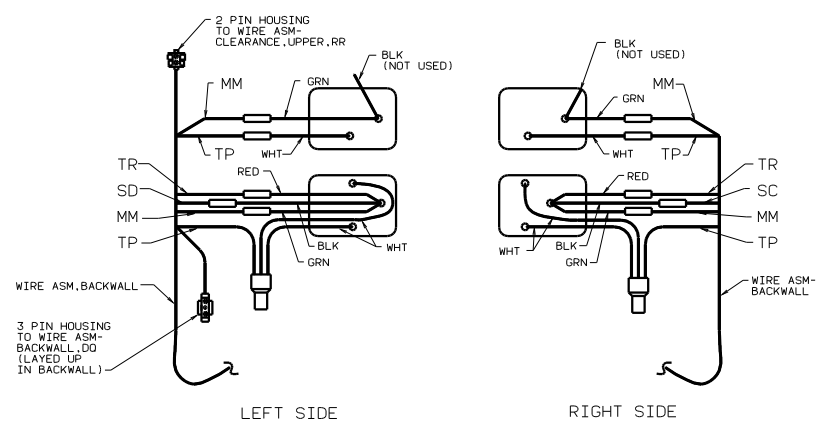
| | | | |
|-------------------------|------|------------|----|
| TITLE | | DRAWING NO | |
| WIRING INSTL-BODY(COAX) | | 130060 | |
| 30 X 100 SCALE | DATE | SHEET | OF |
| | | 22 | 24 |



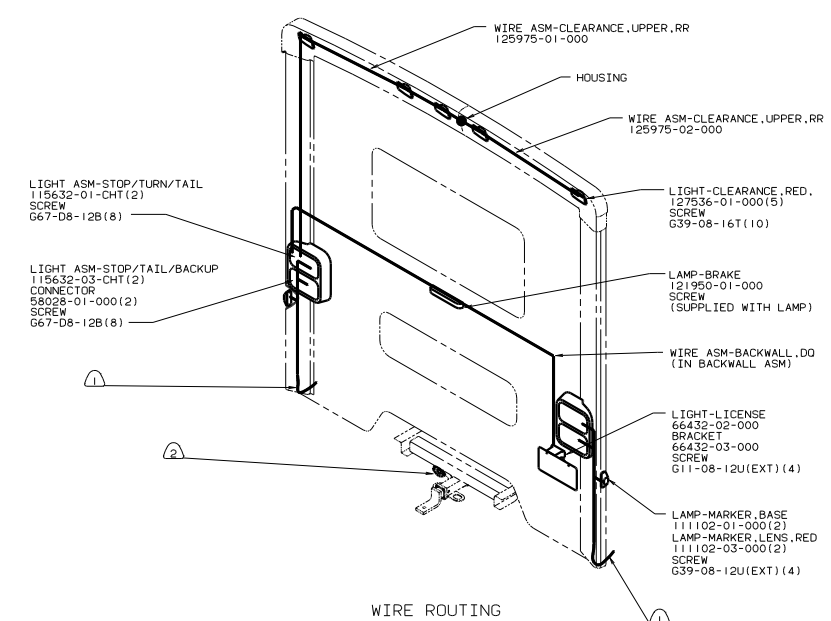
2) CONNECTOR-PLUG, TRAILER 113589-01-000 TO BE SUPPLIED LOOSE IN COACH WITH TRAILER TOW PACKAGE.

1) SEE WIRING INSTL-CHASSIS FOR ADDITIONAL INFORMATION.

WINNEBAGO



TAILLAMP WIRING



WIRE ROUTING

ITASCA

FOR ELECTRICAL TORQUE SPECIFICATIONS SEE DWG NO 128783-01-000

99 G37G
EXTERIOR LIGHTING
265 CODE STANDARDS-CSA
1B1 CODE STANDARDS-USA

| | |
|---------------|-------------------------|
| TITLE | WIRING INSTL-BODY(EX L) |
| NO. OF SHEETS | 24 OF 24 |
| SHEET | 16 |
| DATE | 130060 |