



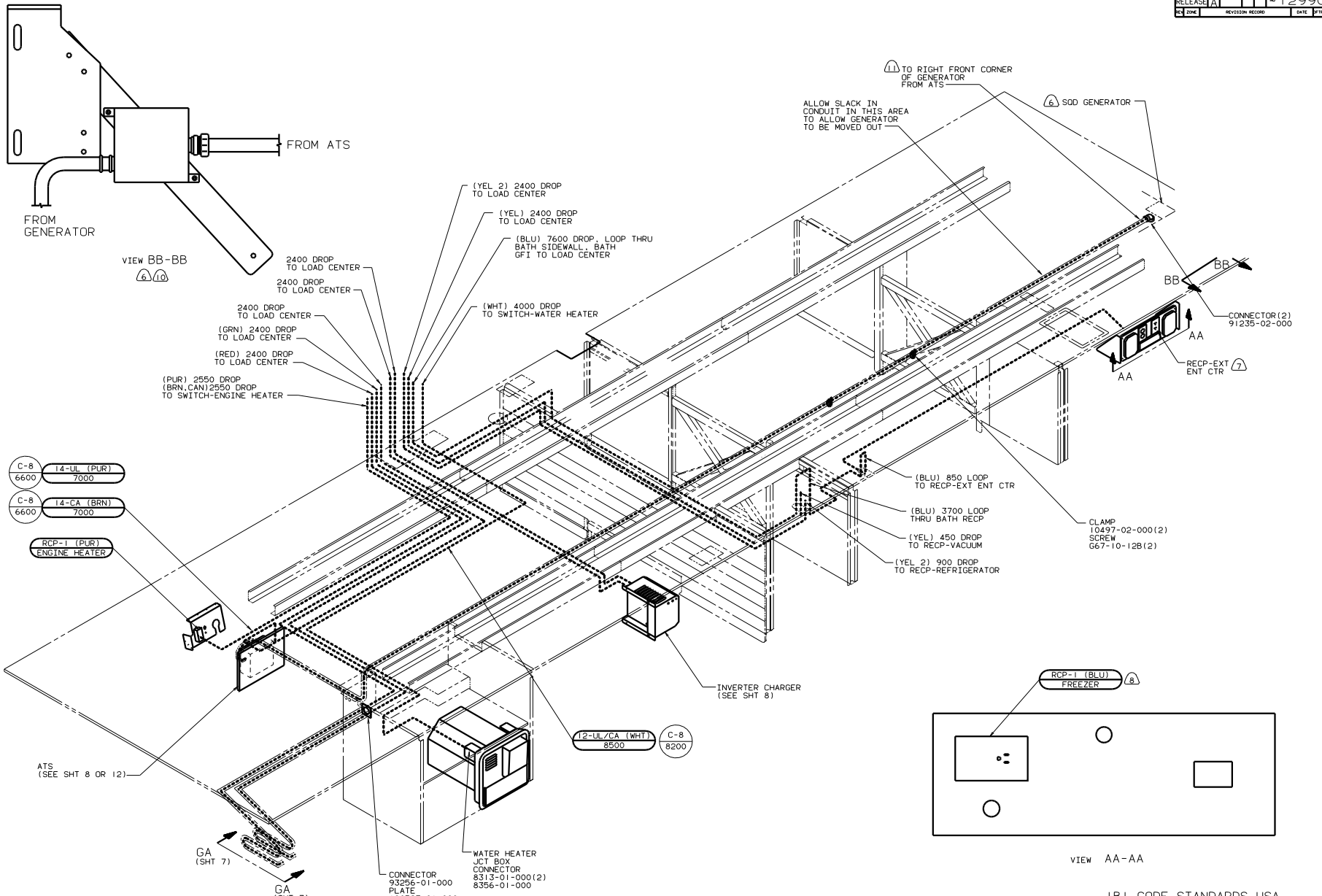
DANGER

Danger of electrical shock, burns or death. Always remove all power sources before attempting any repair, service or diagnostic work. Power can be present from shore power, generator, inverter or battery. All power sources must be disabled and secured before performing any service.



CAUTION

If you lack the skills, tools or equipment to perform diagnostic or repair work leave such work to an authorized Winnebago Industries dealer or other qualified shop.



- C-8 14-UL (PUR) 6600 7000
- C-8 14-CA (BRN) 6600 7000
- RCP-1 (PUR) ENGINE HEATER

- 12-UL/CA (WHT) 8500
- C-8 8200

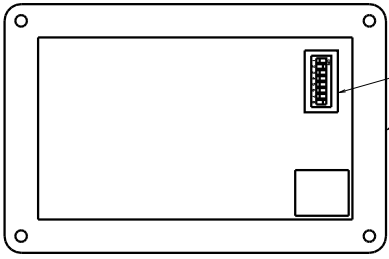
- (6) SEE GENERATOR INSTALLATION FOR ADDITIONAL INFORMATION.
- (7) 76C EXTERIOR ENT CTR W/CASSETTE OR ID5 EXTERIOR ENT CTR W/COMPACT DISC.
- 4. SEE WIRING DIAGRAM-BODY FOR ADDITIONAL INFORMATION.
- ALL WIRES ARE TO BE COVERED WITH TUBING 8041-02-000.
- 2. ALL WIRES ARE TO BE CLAMPED WITH CLAMP 10497-05-000 WITHIN 200 OF OUTLET BOXES AND SPLICES. USE SCREW G67-10-12B OR G39-10-12B.
- 1. ALL WIRE TO BE CLAMPED WITH CLAMP 10495-01-000 OR CLIP 80734-02-000 EVERY 600. USE SCREW G67-10-12B UNLESS OTHERWISE SPECIFIED.
- (11) 670 GENERATOR-7,500 WATT, ONAN-QUIET DIESEL.
- (10) 39R GENERATOR-6,500 WATT, ONAN MARQUIS-LP.
- (9) 76C EXTERIOR ENT CTR W/CASSETTE OR ID5 EXTERIOR ENT CTR W/COMPACT DISC.
- (8) 11E REFRIGERATOR/FREEZER-PORTABLE.
- (7) SEE EXT ENT CTR COMPLETE FOR ADDITIONAL INFORMATION.

FOR ELECTRICAL TORQUE SPECIFICATIONS SEE DWG NO. 128763-01-000

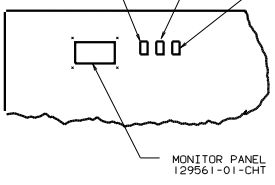
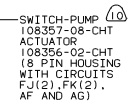
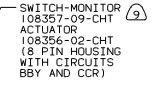
FOR ELECTRICAL CALLOUTS SEE DWG NO. 121339-01-000

IBI CODE STANDARDS USA
 265 CODE STANDARDS CAN
 78J ELECTRICAL SYS-50A

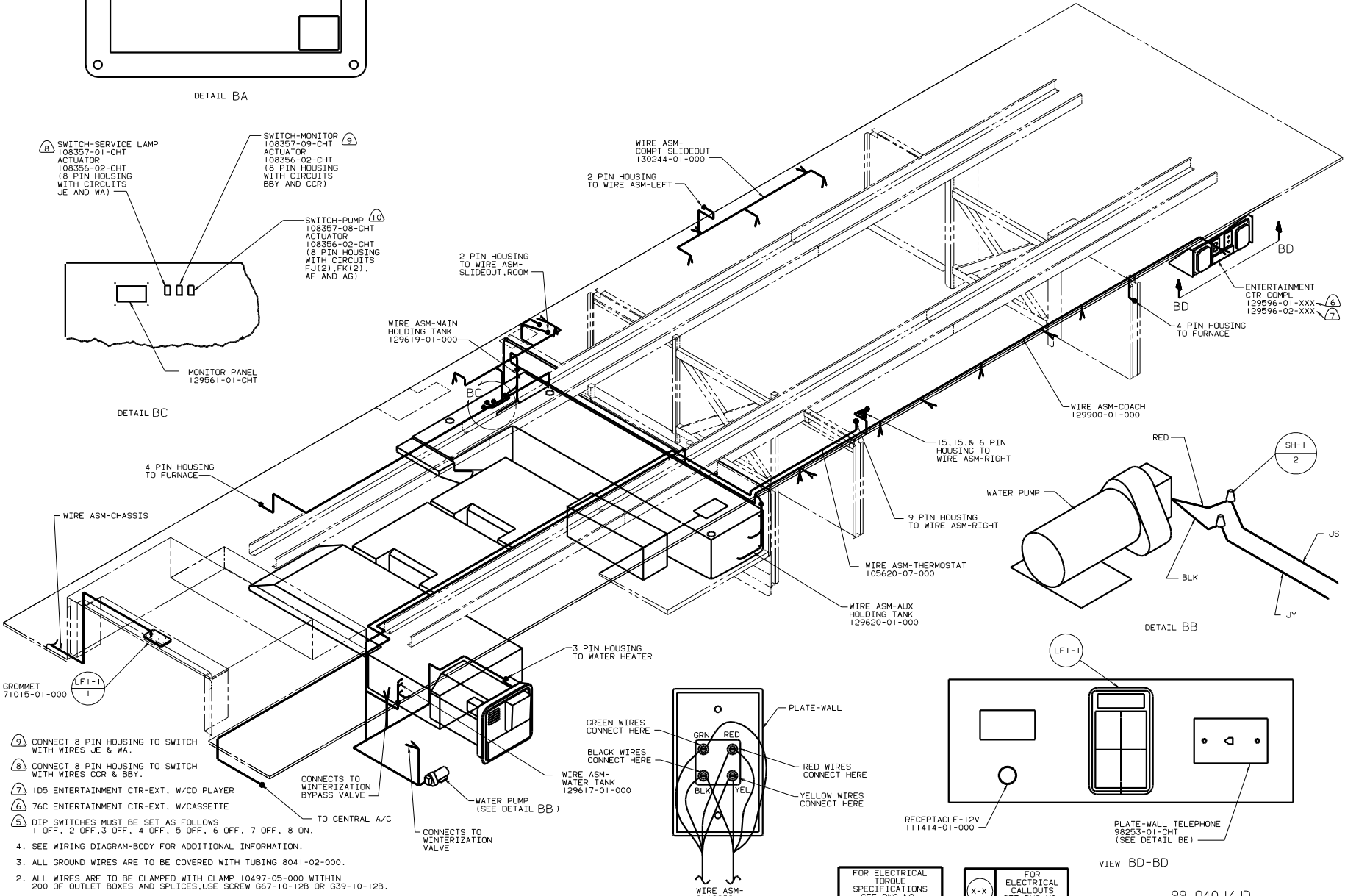
DRAWN BY		DATE		UNDESIGNED TOLERANCES ARE:		MATERIAL	
CHKD	DATE	WHOLE DIM (IN)	+	ONE-PLACE (IN, MM)	+		
D/E	DATE	TWO-PLACE (IN, MM)	+				
DATE	DATE	ANGLE					
DATE	DATE	INDIC. WHOLE INCREMENT					
LAYOUT NO.		TITLE		SHEET 1 OF 19		129903	
BY 8		SCALE: NONE		FOR ELECTRICAL CALLOUTS SEE DWG NO. 121339-01-000		WINNEBAGO 99 040J/JD	



DETAIL BA

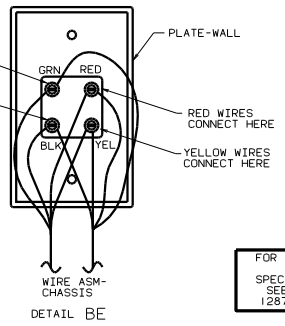


DETAIL BC



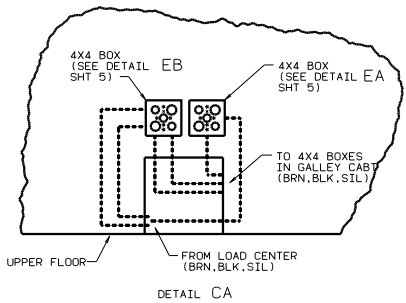
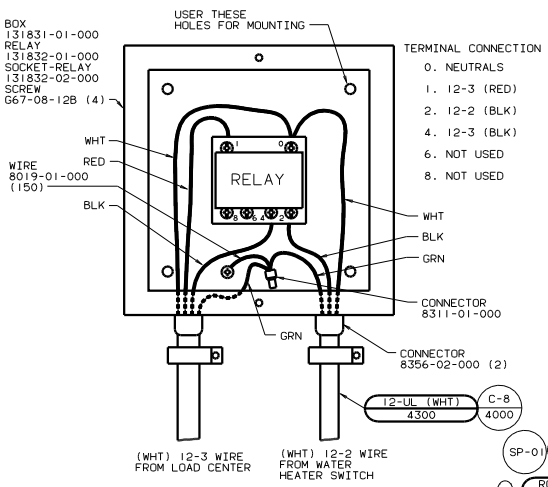
- 9. CONNECT 8 PIN HOUSING TO SWITCH WITH WIRES JE & WA.
- 8. CONNECT 8 PIN HOUSING TO SWITCH WITH WIRES CCR & BBY.
- 7. 105 ENTERTAINMENT CTR-EXT. W/CD PLAYER
- 6. 76C ENTERTAINMENT CTR-EXT. W/CASSETTE
- 5. DIP SWITCHES MUST BE SET AS FOLLOWS
1 OFF, 2 OFF, 3 OFF, 4 OFF, 5 OFF, 6 OFF, 7 OFF, 8 ON.
- 4. SEE WIRING DIAGRAM-BODY FOR ADDITIONAL INFORMATION.
- 3. ALL GROUND WIRES ARE TO BE COVERED WITH TUBING 8041-02-000.
- 2. ALL WIRES ARE TO BE CLAMPED WITH CLAMP 10497-05-000 WITHIN 200 OF OUTLET BOXES AND SPLICES. USE SCREW G67-10-12B OR G39-10-12B.
- 1. ALL WIRE TO BE CLAMPED WITH CLAMP 10495-01-000 OR CLIP 80734-02-000 EVERY 600. USE SCREW G67-10-12B UNLESS OTHERWISE SPECIFIED.

NOTES:

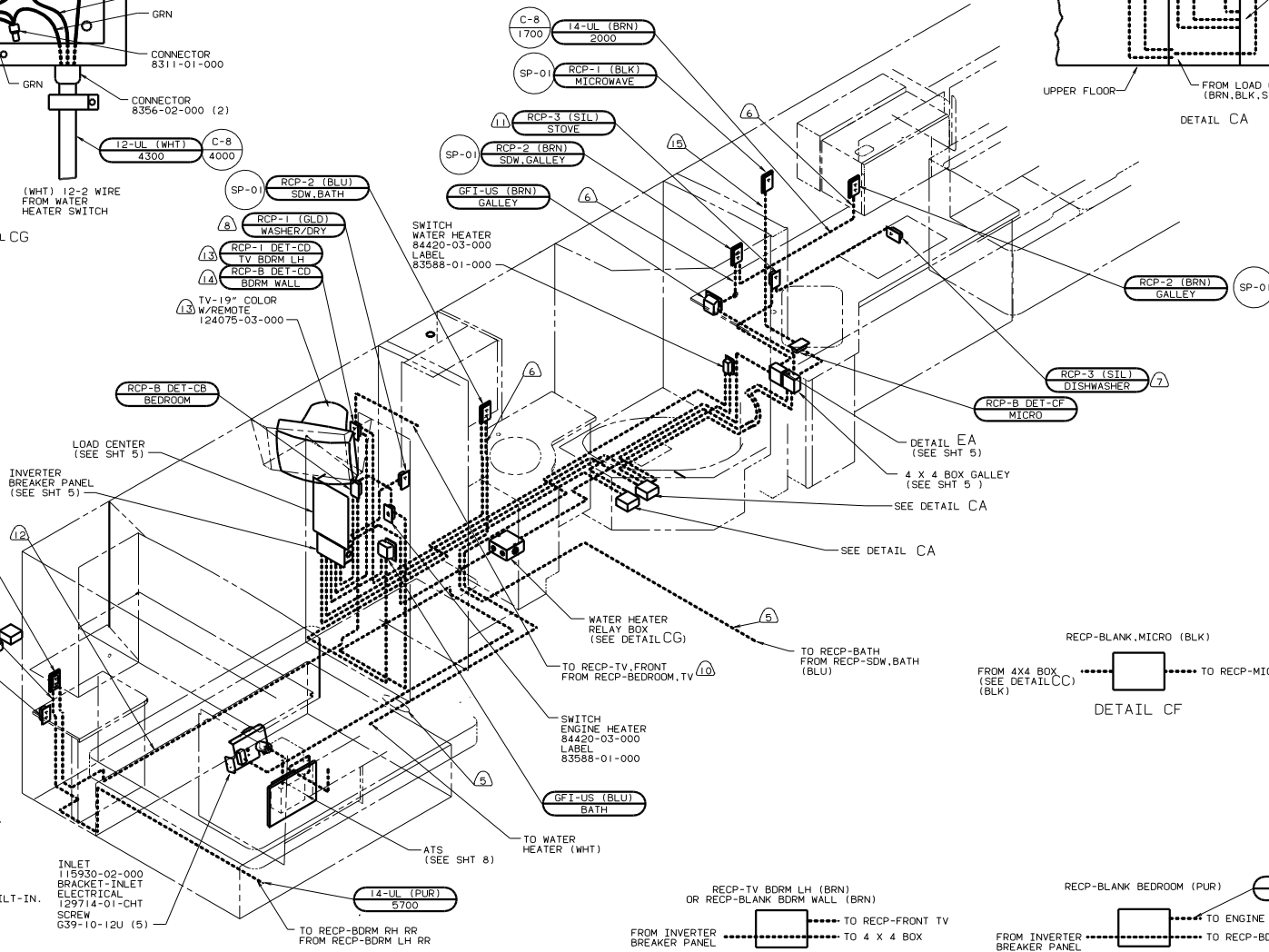


FOR ELECTRICAL TORQUE SPECIFICATIONS SEE DWG NO. 128783-01-000

FOR ELECTRICAL CALLOUTS SEE DWG NO. 121339-01-000



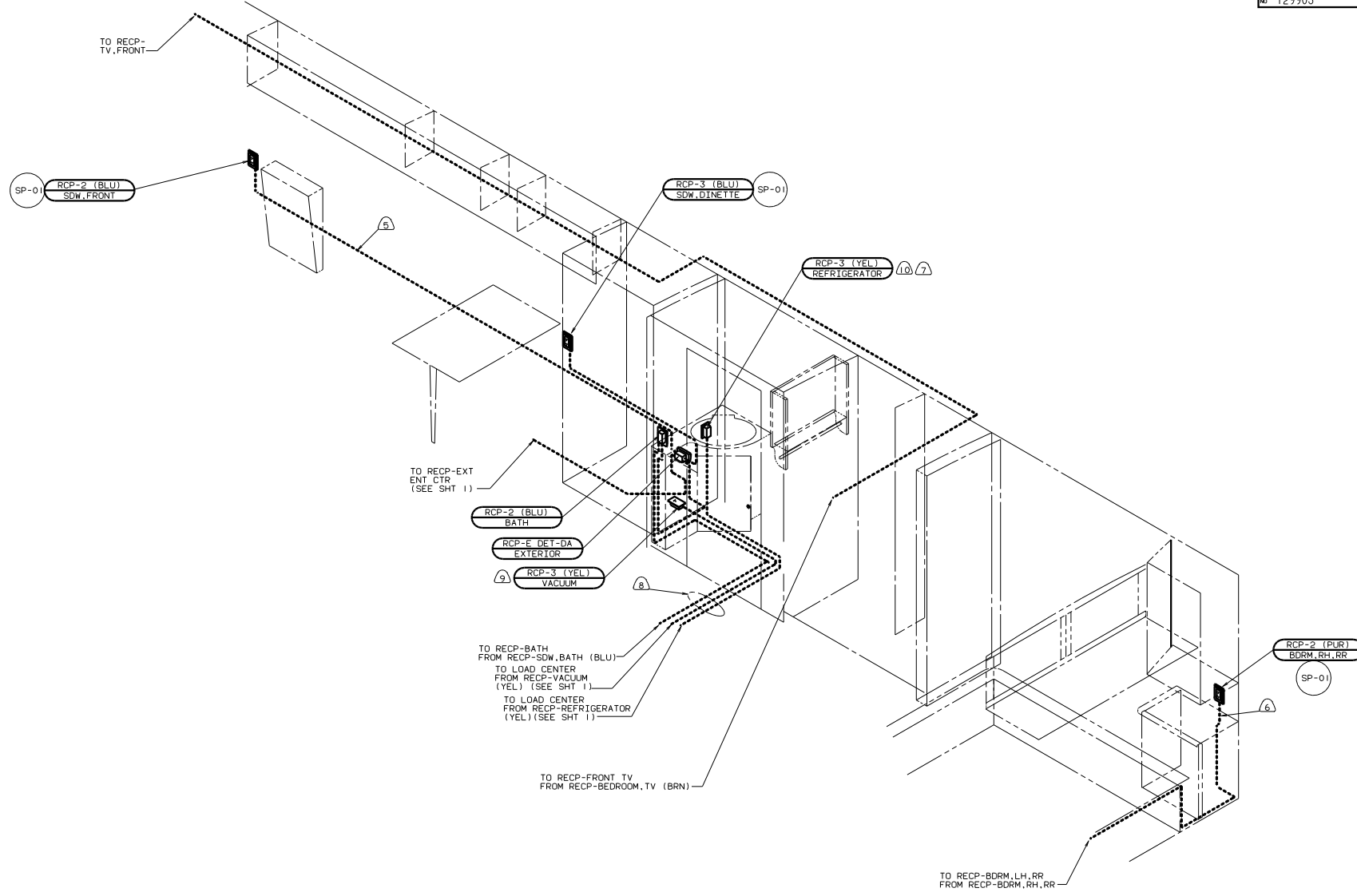
DETAIL CG



- 15 WIRE IN SIDEWALL.
- 14 42B TV (REAR)-WITHOUT.
- 13 10W TV (REAR) AC 19" COLOR W/REMOTE.
- 12 WIRE ROUTED THRU FLOOR.
- 11 WITH IFI RANGE TOP - TWO-BURNER.
- 10 WIRE ROUTED IN ROOF.
- 9 26L REAR STEREO SYSTEM.
- 8 54E WASHER/DRYER COMBINATION.
- 7 21N DISHWASHER-UNDER COUNTER BUILT-IN.
- 6 WIRE ROUTED IN SIDEWALL.
- 5 WIRE ROUTED BELOW FLOOR.

- 4. SEE WIRING DIAGRAM-BODY FOR ADDITIONAL INFORMATION.
- 3. ALL GROUND WIRES ARE TO BE COVERED WITH TUBING 8041-02-000.
- 2. ALL WIRES ARE TO BE CLAMPED WITH CLAMP 10497-05-000 WITHIN 200 OF OUTLET BOXES AND SPLICES, USE SCREW G67-10-12B OR G39-10-12B.
- 1. ALL WIRE TO BE CLAMPED WITH CLAMP 10495-01-000 OR CLIP 80734-02-000 EVERY 600, USE SCREW G67-10-12B UNLESS OTHERWISE SPECIFIED.

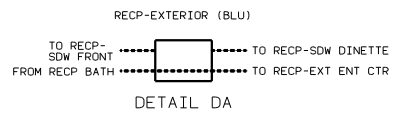
FOR ELECTRICAL TORQUE SPECIFICATIONS SEE DWG NO. 128783-01-000	(X-X)	FOR ELECTRICAL CALLOUTS SEE DWG NO. 121339-01-000
--	-------	---



- ⑩ 15U REFRIG W/ICEMAKER.
- ⑨ 22T VACUUM SYSTEM-CENTRAL.
- ⑧ WIRE ROUTED BELOW FLOOR.
- ⑦ 79W REFRIGERATOR-4 DOOR.
- ⑥ WIRE ROUTED IN SIDEWALL.
- ⑤ WIRE IN SIDEWALL.

4. SEE WIRING DIAGRAM-BODY, 110V FOR ADDITIONAL INFORMATION.
3. ALL GROUND WIRES ARE TO BE COVERED WITH TUBING 8041-02-000.
2. ALL WIRES ARE TO BE CLAMPED WITH CLAMP 10497-05-000 WITHIN 200 OF OUTLET BOXES AND SPLICES, USE SCREW G67-10-12B OR G39-10-12B.
1. ALL WIRE TO BE CLAMPED WITH CLAMP 10495-01-000 OR CLIP 80734-02-000 EVERY 600, USE SCREW G67-10-12B UNLESS OTHERWISE SPECIFIED.

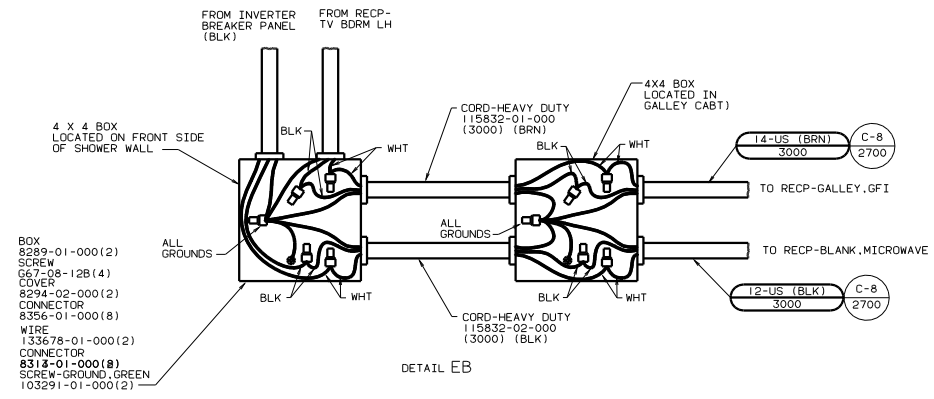
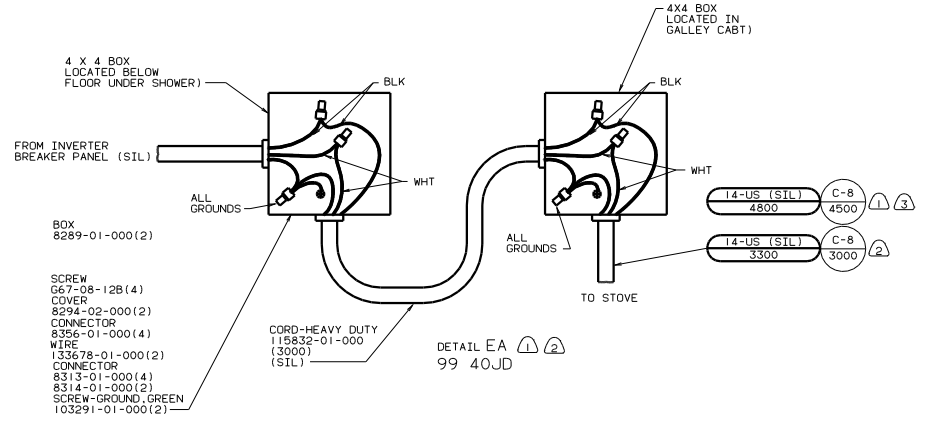
NOTES:



FOR ELECTRICAL TORQUE SPECIFICATIONS SEE DWG NO. 128783-01-000

X-X FOR ELECTRICAL CALLOUTS SEE DWG NO. 121339-01-000

IBI USA STANDARDS
78J ELECTRICAL SYS 50 AMP
TITLE: WIRING INSTL-BODY (110R50US)
DWG NO. 129903
SHEET 4 OF 19

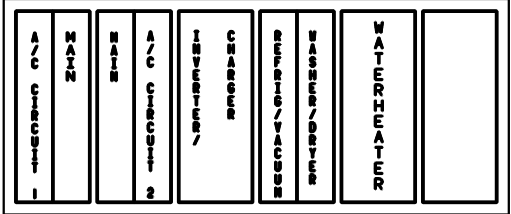
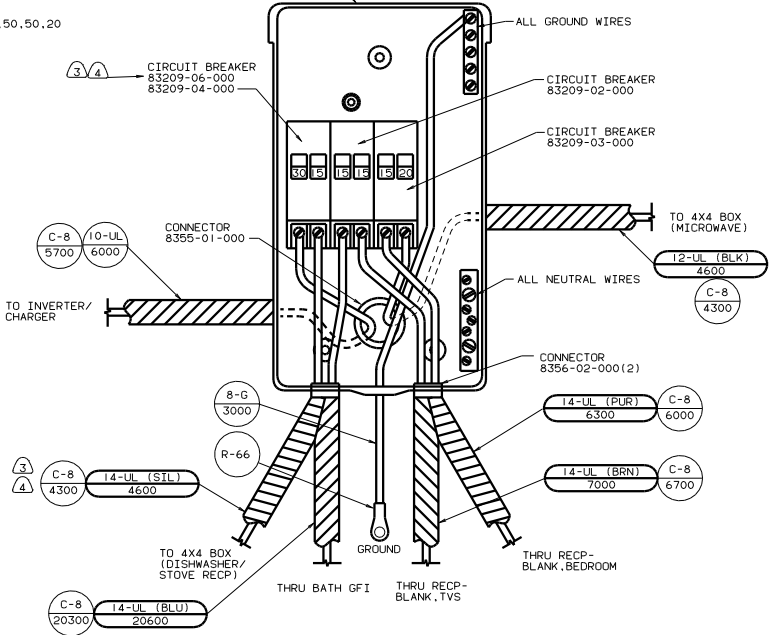
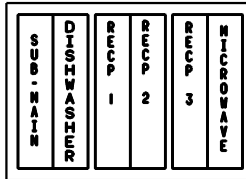
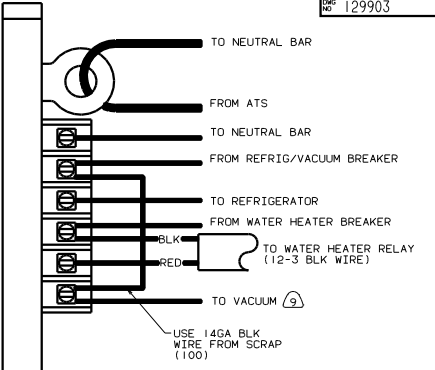
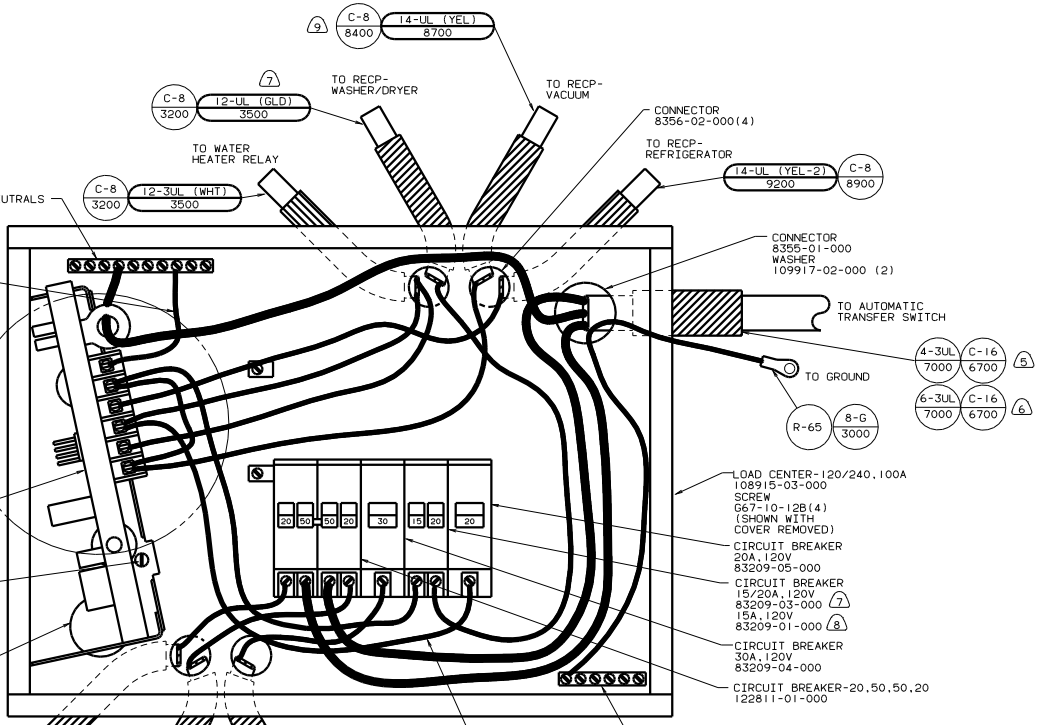


- (3) WITH IF1 AND 2IN.
- (2) IF1 RANGE TOP-TWO BURNER.
- (1) 2IN DISHWASHER-UNDER COUNTER BUILT-IN.

NOTES:

99 040J/JD
IB1 CODE STANDARDS-USA

TITLE: WIRING INSTL-BODY	
30 IN SCALE DRAWING	FILE NO: 129903
SHEET 5 OF 19	1.E



- ⑨ 22T VACUUM SYSTEM-CENTRAL.
- ⑧ 21T WASHER/DRYER-WITHOUT.
- ⑦ 54E WASHER/DRYER COMBINATION.
- ⑥ 39R GEN-6.5KW ONAN LP.
- ⑤ 67D GEN-7.5KW ONAN ODSL.
- ④ IFI RANGE TOP-TWO BURNER.
- ③ 40J WITH 21N DISHWASHER-UNDER COUNTER BUILT IN.
- ② WIRE MUST BE 600 LONG INSIDE BOX.

INSTALL LABEL ON FRONT PANEL BELOW BREAKERS BETWEEN MOUNTING HOLES

LABEL 95721-22-000

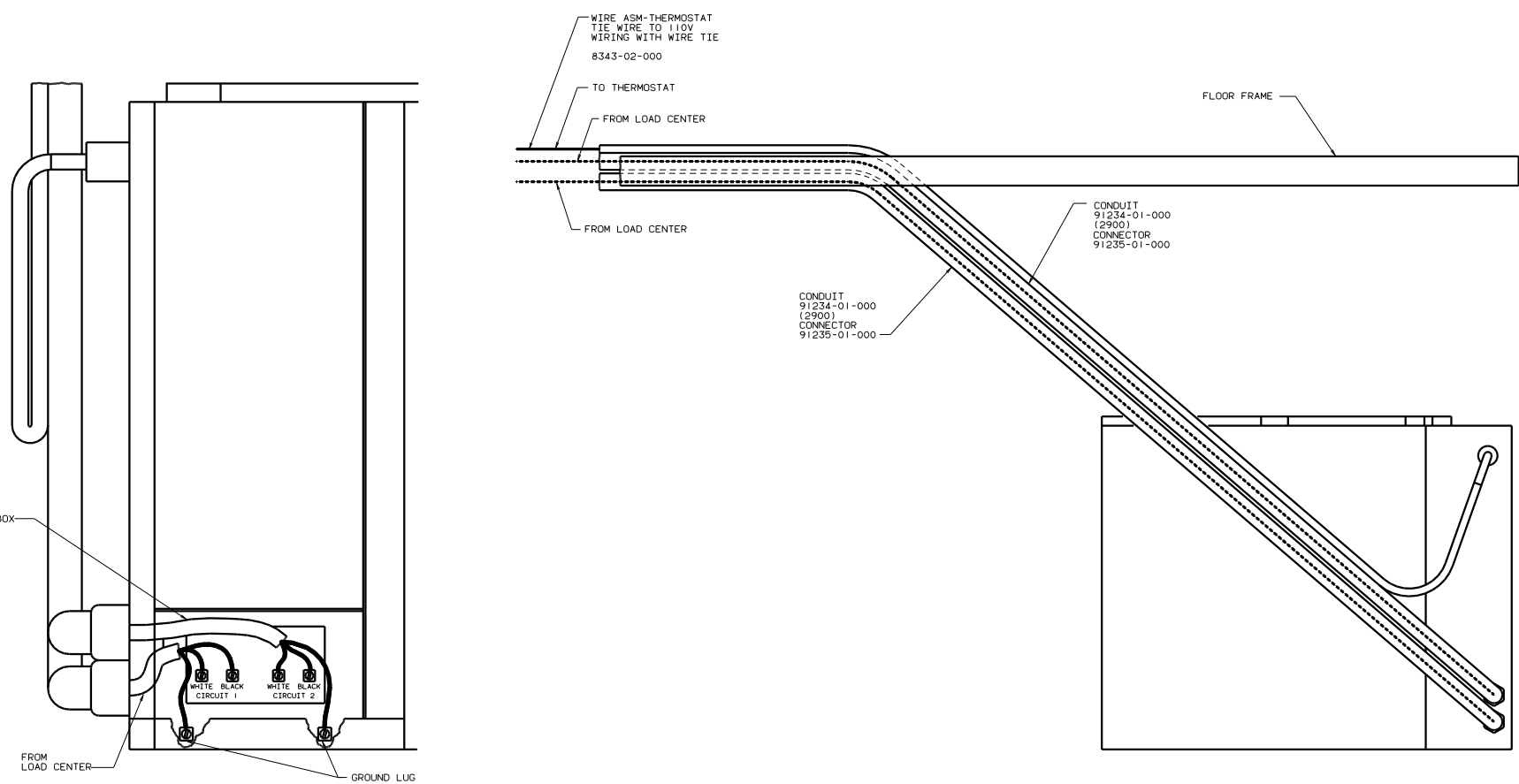
1. ALL GROUND WIRES TO BE COVERED WITH TUBING 8041-02-000.

FOR ELECTRICAL TORQUE SPECIFICATIONS SEE DWG NO. 128783-01-000

FOR ELECTRICAL CALLOUTS SEE DWG NO. 121339-01-000

99 040J/JD
IBI CODE STANDARDS-USA

WIRING INSTL-BODY(50 LC US)
SHEET 6 OF 19



VIEW GA-GA

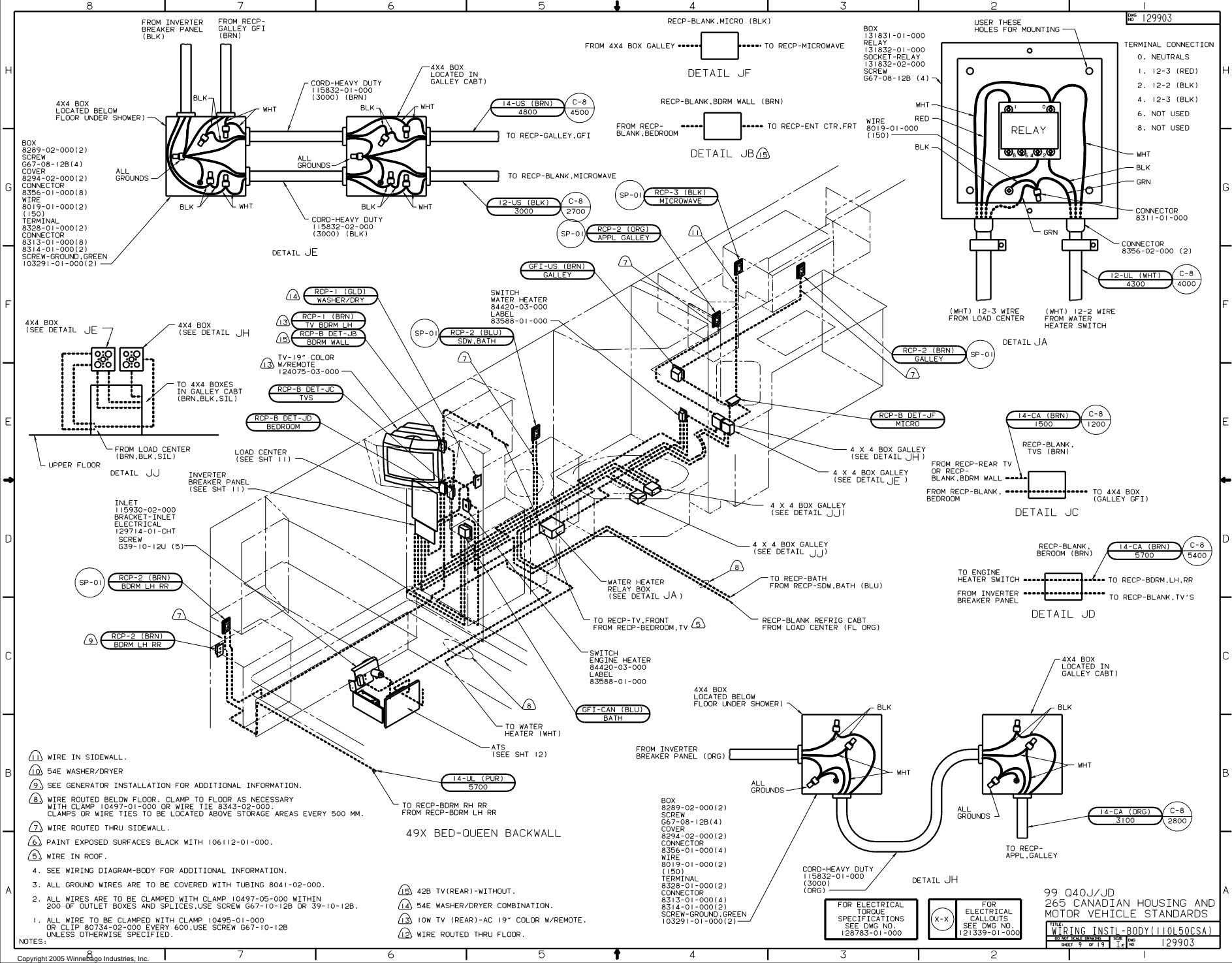
FOR ELECTRICAL
TORQUE
SPECIFICATIONS
SEE DWG NO.
128783-01-000

(X-X)

FOR
ELECTRICAL
CALLOUTS
SEE DWG NO.
121339-01-000

99 Q40J/JD
1B1 USA STANDARDS
265 CANADIAN HOUSING AND
MOTOR VEHICLE STANDARDS

TITLE		DWG NO	
WIRING INSTL-BODY(CNTRL A/C)		129903	
SHEET 7 OF 19		1E	



129903

- BOX
8289-02-000(2)
SCREW
G67-08-12B(4)
COVER
8294-02-000(2)
CONNECTOR
8356-01-000(8)
WIRE
8019-01-000(2)
(150)
TERMINAL
8328-01-000(2)
CONNECTOR
8313-01-000(8)
8314-01-000(2)
SCREW-GROUND, GREEN
103291-01-000(2)

TERMINAL CONNECTION

0.	NEUTRALS
1.	12-3 (RED)
2.	12-2 (BLK)
4.	12-3 (BLK)
6.	NOT USED
8.	NOT USED

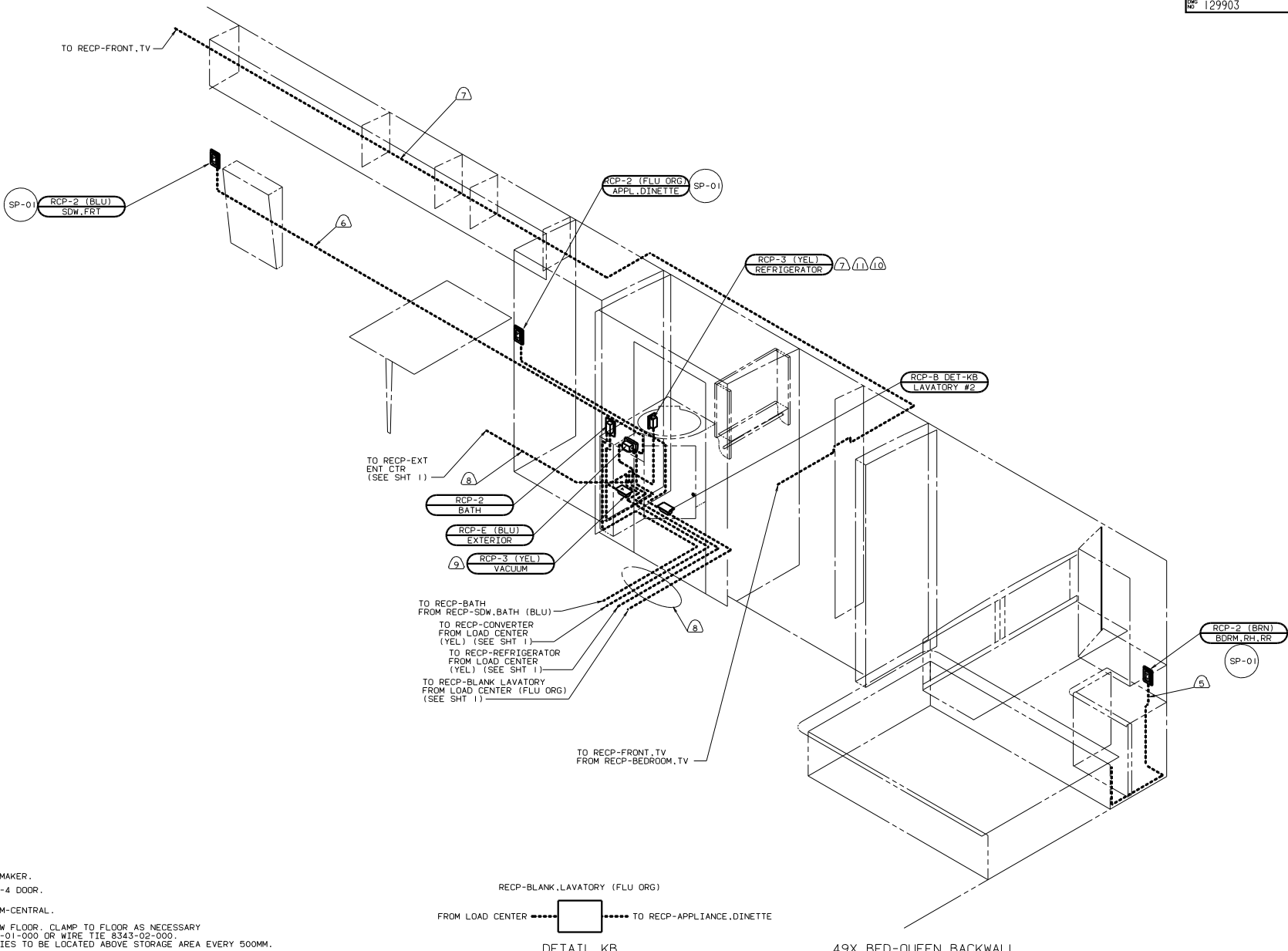
- NOTES:
1. ALL WIRE TO BE CLAMPED WITH CLAMP 10495-01-000 OR CLIP 80734-02-000 EVERY 600. USE SCREW G67-10-12B UNLESS OTHERWISE SPECIFIED.
 2. ALL WIRES ARE TO BE CLAMPED WITH CLAMP 10497-05-000 WITHIN 200 OF OUTLET BOXES AND SPLICES. USE SCREW G67-10-12B OR 39-10-12B.
 3. ALL GROUND WIRES ARE TO BE COVERED WITH TUBING 8041-02-000.
 4. SEE WIRING DIAGRAM-BODY FOR ADDITIONAL INFORMATION.
 5. WIRE IN ROOF.
 6. PAINT EXPOSED SURFACES BLACK WITH 106112-01-000.
 7. WIRE ROUTED THRU SIDEWALL.
 8. WIRE ROUTED BELOW FLOOR. CLAMP TO FLOOR AS NECESSARY WITH CLAMP 10497-01-000 OR WIRE TIE 8343-02-000. CLAMPS OR WIRE TIES TO BE LOCATED ABOVE STORAGE AREAS EVERY 500 MM.
 9. SEE GENERATOR INSTALLATION FOR ADDITIONAL INFORMATION.
 10. 54E WASHER/DRYER
 11. WIRE IN SIDEWALL.

- BOX
8289-02-000(2)
SCREW
G67-08-12B(4)
COVER
8294-02-000(2)
CONNECTOR
8356-01-000(4)
WIRE
8019-01-000(2)
(150)
TERMINAL
8328-01-000(2)
CONNECTOR
8313-01-000(4)
8314-01-000(2)
SCREW-GROUND, GREEN
103291-01-000(2)

FOR ELECTRICAL TORQUE SPECIFICATIONS SEE DWG NO. 128783-01-000

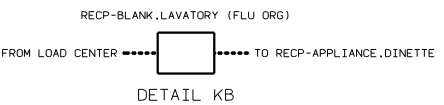
FOR ELECTRICAL CALLOUTS SEE DWG NO. 121339-01-000

99 040J/JD
265 CANADIAN HOUSING AND MOTOR VEHICLE STANDARDS
WIRING INSTL-BODY(110150CSA)
129903



- ① 15U REFRIG W/ICEMAKER.
 - ⑩ 79W REFRIGERATOR-4 DOOR.
 - ⑨ 22T VACUUM SYSTEM-CENTRAL.
 - ⑧ WIRE ROUTED BELOW FLOOR. CLAMP TO FLOOR AS NECESSARY WITH CLAMP 10497-01-000 OR WIRE TIE 8343-02-000. CLAMPS OR WIRE TIES TO BE LOCATED ABOVE STORAGE AREA EVERY 500MM.
 - ⑦ WIRE IN ROOF.
 - ⑥ WIRE IN SIDEWALL.
 - ⑤ WIRE ROUTED THRU SIDEWALL.
4. SEE WIRING DIAGRAM-BODY FOR ADDITIONAL INFORMATION.
 3. ALL GROUND WIRES ARE TO BE COVERED WITH TUBING 8041-02-000.
 2. ALL WIRES ARE TO BE CLAMPED WITH CLAMP 10497-05-000 WITHIN 200 OF OUTLET BOXES AND SPLICES. USE SCREW G67-10-12B OR G39-10-12B.
 1. ALL WIRE TO BE CLAMPED WITH CLAMP 10495-01-000 OR CLIP 80734-02-000 EVERY 600. USE SCREW G67-10-12B UNLESS OTHERWISE SPECIFIED.

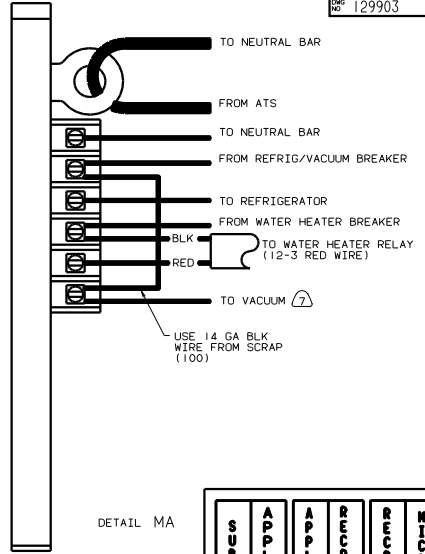
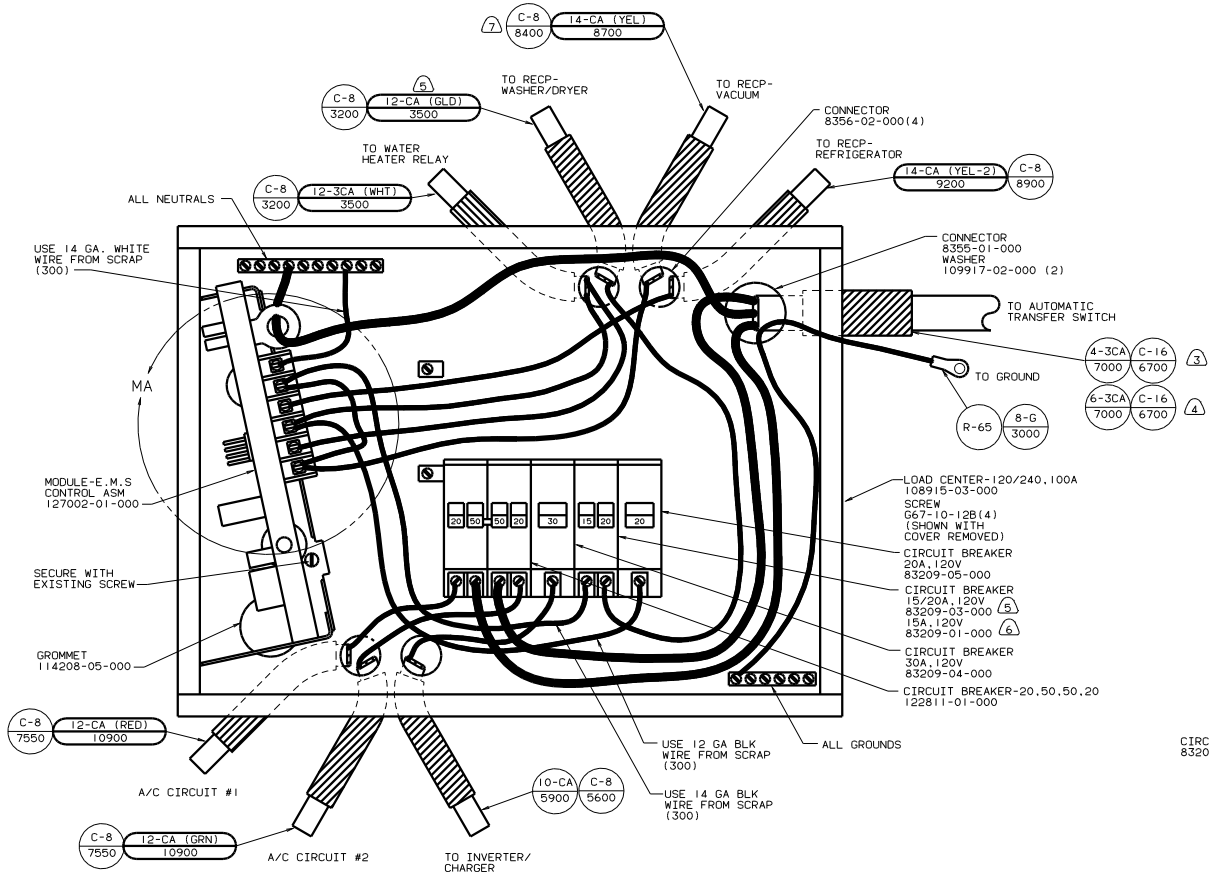
NOTES:



FOR ELECTRICAL TORQUE SPECIFICATIONS SEE DWG NO. 128783-01-000

FOR ELECTRICAL CALL-OUTS SEE DWG NO. 121339-01-000

99 040J/JD
 1B1 USA STANDARDS
 78J ELECTRICAL SYS 50 AMP
 WIRING INSTL-BODY (110R50US)
 SHEET 10 OF 19
 129903

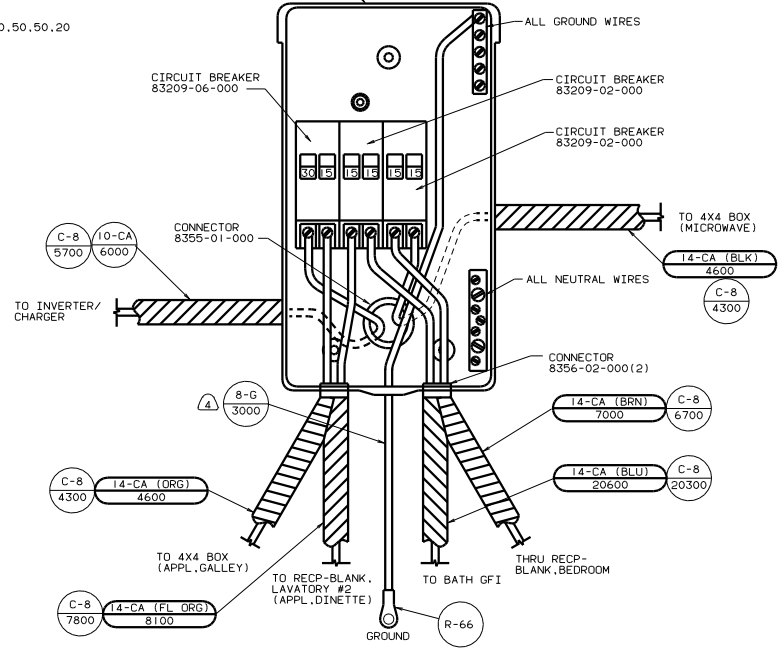


SUB-MAIN	APPLIANCE 1	RECP 1	RECP 2	MICROWAVE
----------	-------------	--------	--------	-----------

LOAD CENTER 109677-01-000
SCREW G67-10-12B (4)
(SHOWN WITH COVER REMOVED)
LABEL 95721-21-000

A/C CIRCUIT 1	WATER HEATER	WASHER/DRYER	REFRIG/VACUUM	CHARGER	INVERTER/	A/C CIRCUIT 2	WATER HEATER
---------------	--------------	--------------	---------------	---------	-----------	---------------	--------------

INSTALL LABEL ON FRONT PANEL BELOW BREAKERS BETWEEN MOUNTING HOLES
LABEL 95721-22-000



- ⑦ 22T VACUUM SYSTEM-CENTRAL.
- ⑥ 21T WASHER/DRYER-WITHOUT.
- ⑤ 54E WASHER/DRYER COMBINATION.
- ④ 39R GEN-6, 5KW ONAN LP.
- ③ 67O GEN-7, 5KW ONAN O DSL.
- ② WIRE MUST BE 700 LONG INSIDE BOX.

1. ALL GROUND WIRES TO BE COVERED WITH TUBING 8041-02-000.

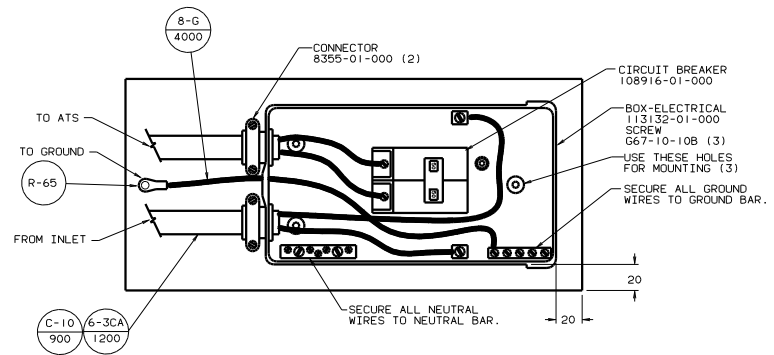
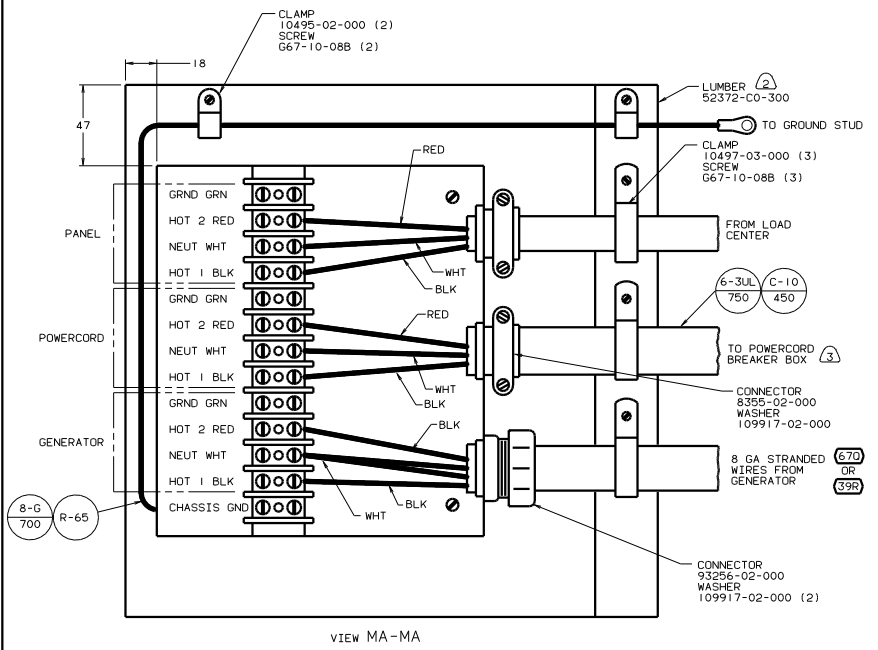
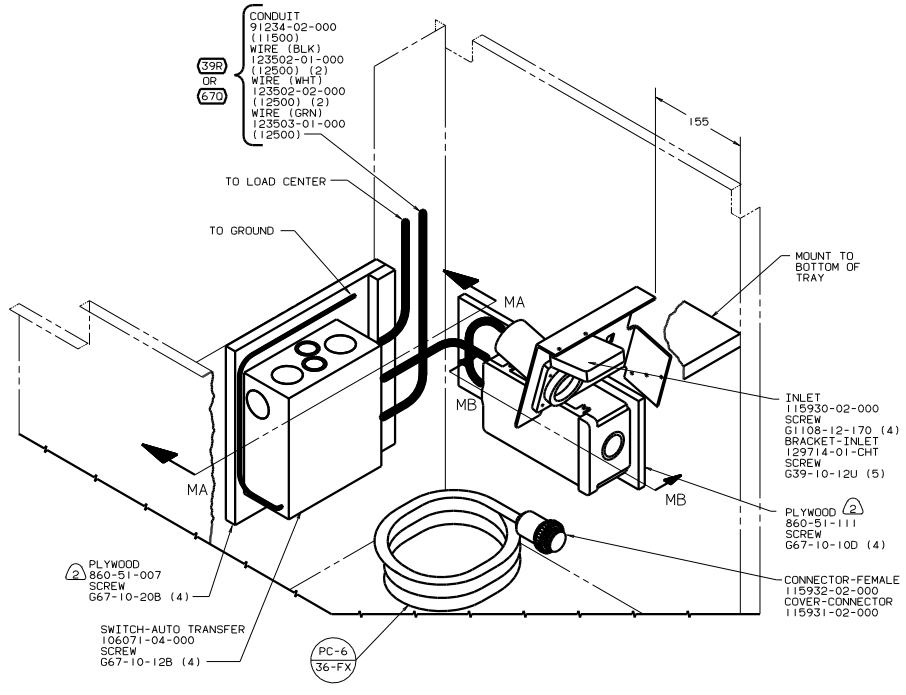
FOR ELECTRICAL TORQUE SPECIFICATIONS SEE DWG NO. 128783-01-000

FOR ELECTRICAL CALLOUTS SEE DWG NO. 121339-01-000

99 040J/JD
265 CODE STANDARDS-CSA

WIRING INSTL-BODY (50 LC US)
129903

- CONDUIT 91234-02-000 (11500)
- WIRE (BLK) 123502-01-000 (12500) (2)
- WIRE (WHT) 123502-02-000 (12500) (2)
- WIRE (GRN) 123503-01-000 (12500)



- 3 SOLDER DIPP STRIPPED ENDS.
- 2 PAINT EXPOSED SURFACES BLACK WITH 106112-01-000.
- 1 ALL WIRES TO BE CLAMPED WITHIN 200 OF BOX.

FOR ELECTRICAL TORQUE SPECIFICATIONS SEE DWG NO. 128783-01-000

(X-X)

FOR ELECTRICAL CALLOUTS SEE DWG NO. 121339-01-000

78 ELECTRICAL SYSTEM-50 AMP

670 GEN-7.5KW-ONAN-QUIET DIESEL

39R GEN-6.5KW-ONAN-LP-MARQUIS

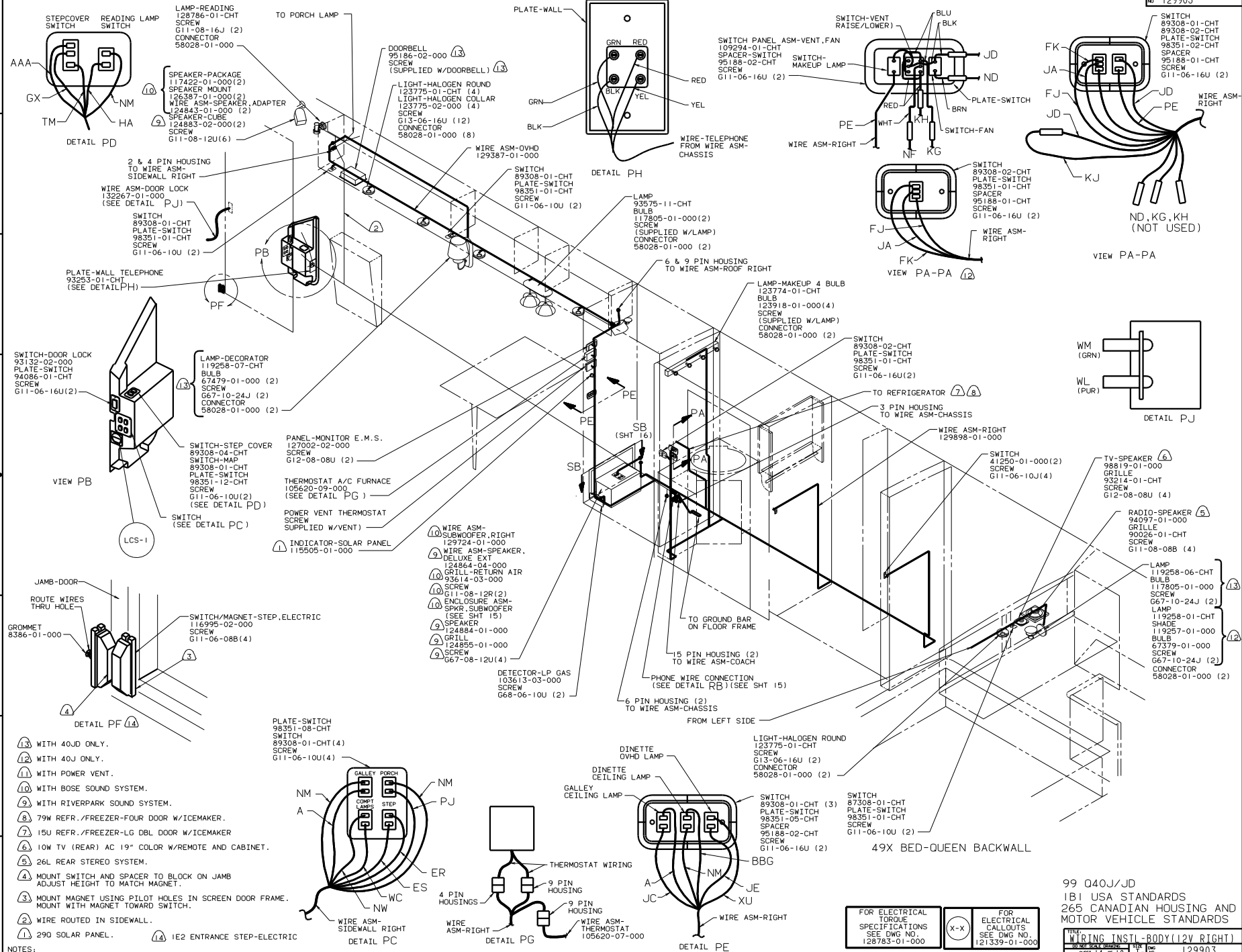
26S CODES/STANDARDS-CSA/CMVSS

99 040J/JD 26S 78J

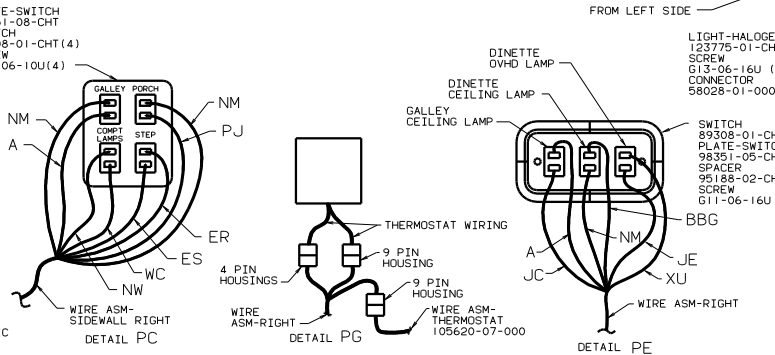
TITLE: WIRING INSTL-BODY(ATS)

NO. OF SHEETS: 20 SHEET 12 OF 19

DATE: 129903



- ⑬ WITH 40J ONLY.
- ⑭ WITH 40J ONLY.
- ① WITH POWER VENT.
- ⑩ WITH BOSE SOUND SYSTEM.
- ⑨ WITH RIVERPARK SOUND SYSTEM.
- ⑧ 79W REFR./FREEZER-FOUR DOOR W/ICEMAKER.
- ⑦ 15U REFR./FREEZER-LG DBL DOOR W/ICEMAKER
- ⑥ 10W TV (REAR) AC 19" COLOR W/REMOTE AND CABINET.
- ⑤ 26L REAR STEREO SYSTEM.
- ④ MOUNT SWITCH AND SPACER TO BLOCK ON JAMB ADJUST HEIGHT TO MATCH MAGNET.
- ③ MOUNT MAGNET USING PILOT HOLES IN SCREEN DOOR FRAME. MOUNT WITH MAGNET TOWARD SWITCH.
- ② WIRE ROUTED IN SIDEWALL.
- ① 290 SOLAR PANEL.
- ⑬ IE2 ENTRANCE STEP-ELECTRIC

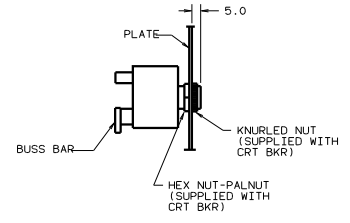
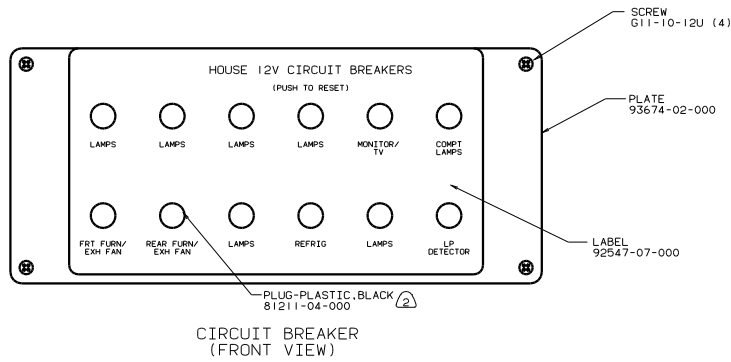


FOR ELECTRICAL TORQUE SPECIFICATIONS SEE DWG NO. 128783-01-000

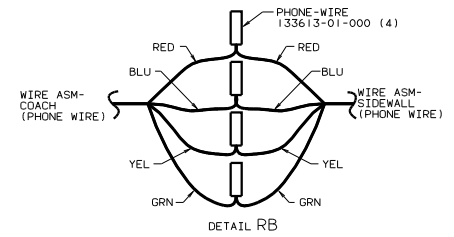
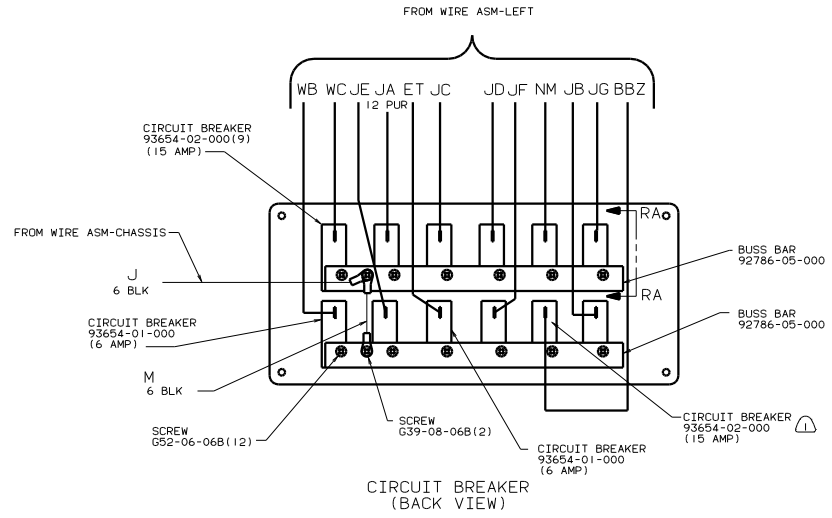
FOR ELECTRICAL CALLOUTS SEE DWG NO. 121339-01-000

99 Q40J/JD
 IBI USA STANDARDS
 265 CANADIAN HOUSING AND MOTOR VEHICLE STANDARDS

WIRING INSTL-BODY (12V RIGHT)
 SHEET 14 OF 19



SECTION RA-RA



NOTES:

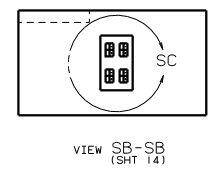
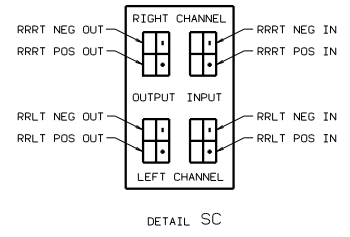
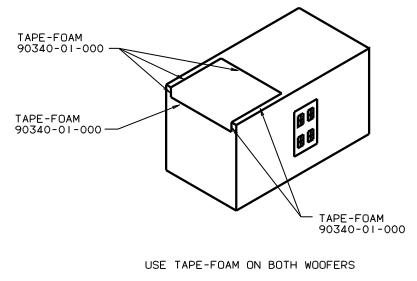
② WITHOUT IC6-25,000 BTU OR HALL POWERED VENT.

① IC6-25,000 OR HALL POWERED VENT.

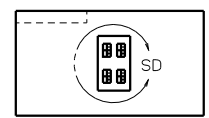
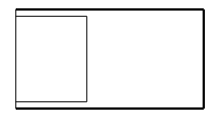
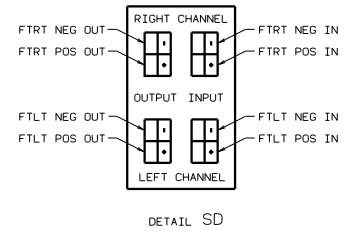
FOR ELECTRICAL TORQUE SPECIFICATIONS SEE DWG NO. 128783-01-000

99 040J/JD
1B1 USA STANDARDS
265 CANADIAN HOUSING AND MOTOR VEHICLE STANDARDS

TITLE		WIRING INSTL-BODY (12 BP)	
DO NOT SCALE DRAWING	REV	DATE	129903
SHEET 15 OF 19	1.E		



REAR BOSE WOOFER



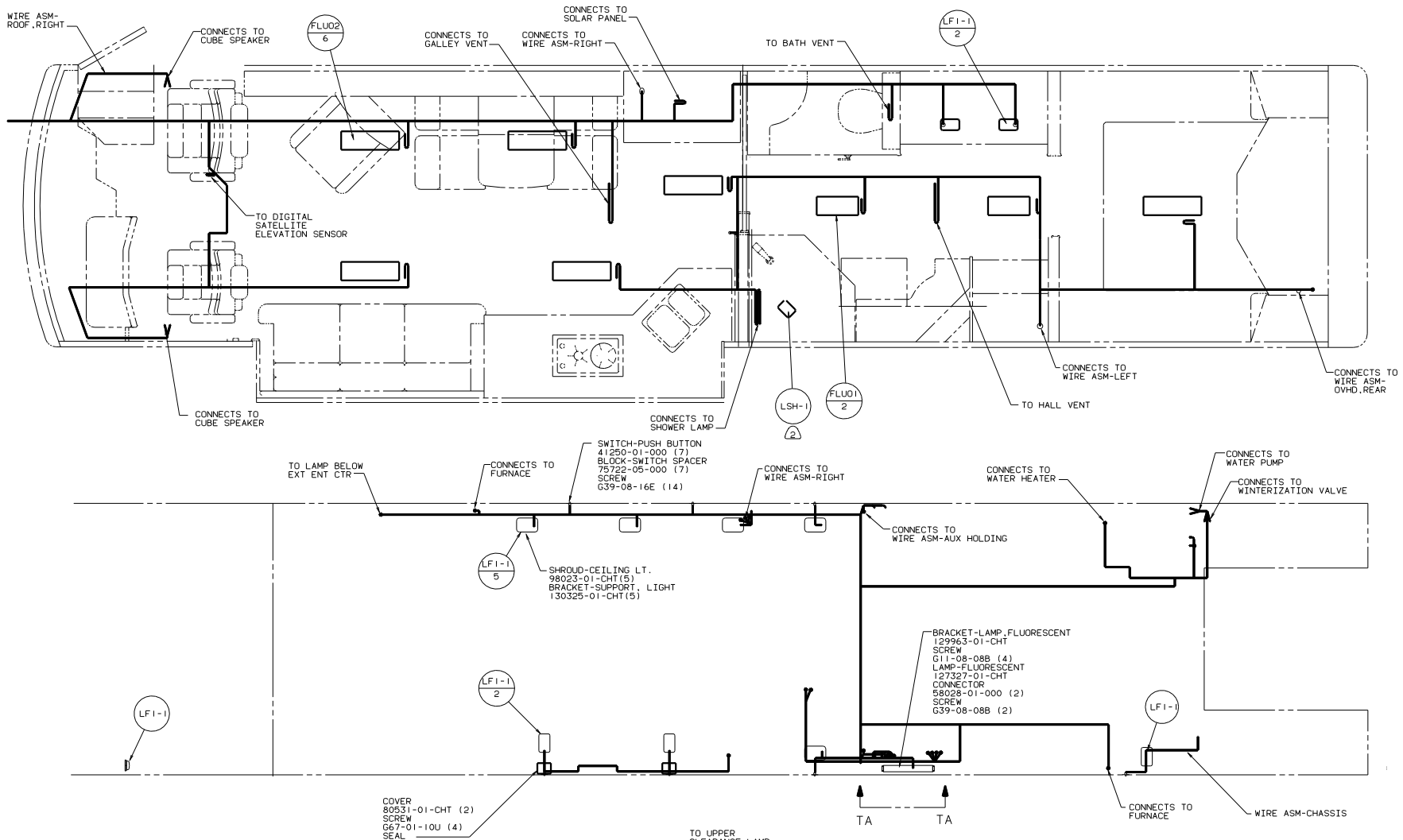
FRONT BOSE WOOFER

NOTES: APPLY ON STRIP OF TAPE-FOAM 90340-01-000 ALONG EACH SIDE OF BRACKET AT ALL POINTS THAT BRACKET CONTACTS WOOFER.

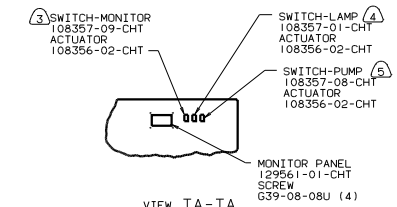
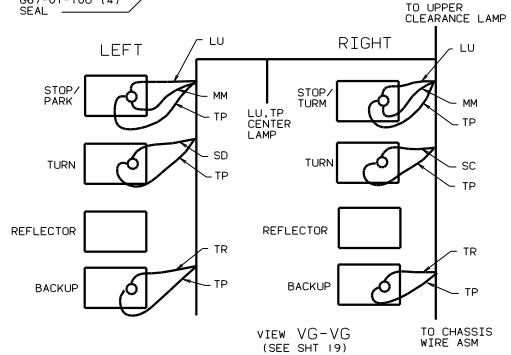
FOR ELECTRICAL TORQUE SPECIFICATIONS SEE DWG NO. 128783-01-000

99 040JD
WOOFER INFORMATION
1B1 USA STANDARDS
265 CANDIAN HOUSING AND
MOTOR VEHICLE STANDARDS

TITLE		129903	
WIRING INSTL - BODY (DLX SND)		129903	
DATE	BY	CHKD	APP'D
16/19			



- ④ CONNECT 8 PIN HOUSING TO SWITCH WITH WIRES FJ (2), FK (2), AF AND AG.
- ④ CONNECT 8 PIN HOUSING TO SWITCH WITH WIRES JE AND WA.
- ③ CONNECT 8 PIN HOUSING TO SWITCH WITH WIRES CCR AND BBV.
- ② WITH 40J ONLY.
- ① WIRE ROUTED INSIDE OF COMPARTMENT.



FOR ELECTRICAL TORQUE SPECIFICATIONS SEE DWG NO. 128783-01-000

X-X

FOR ELECTRICAL CALLOUTS SEE DWG NO. 121339-01-000

99 Q40J/JD
COMPARTMENT LAMPS
265 CODE STANDARDS-CSA
1B1 CODE STANDARDS-USA

TITLE	WIRING INSTL-BODY(12 CL)
NO. OF SHEETS	17 OF 19
FIG. NO.	1E
DWG NO.	129903

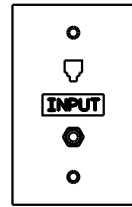
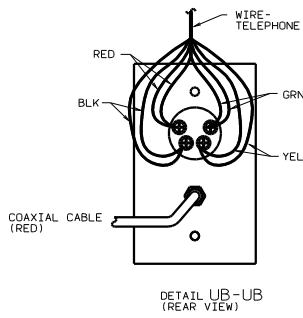
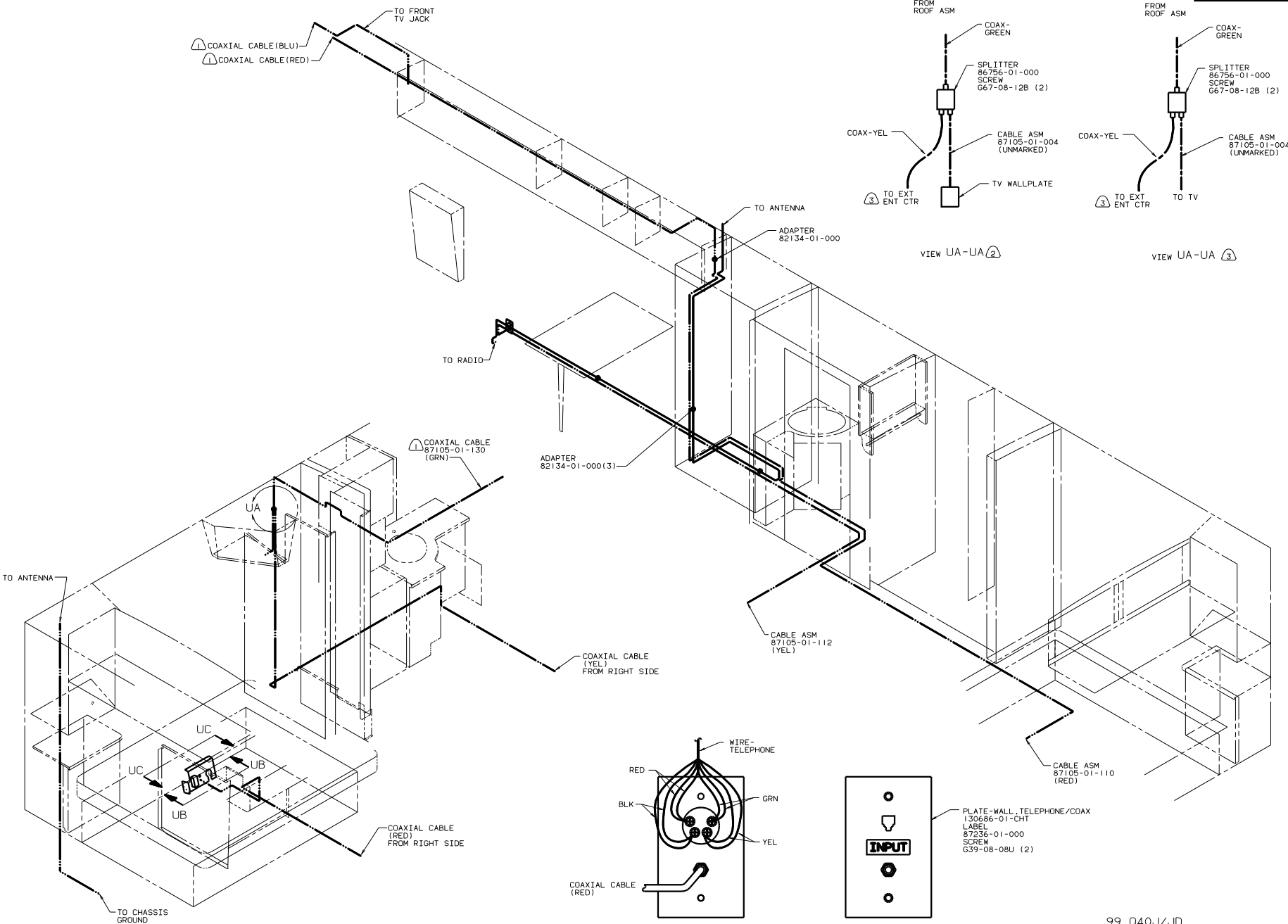
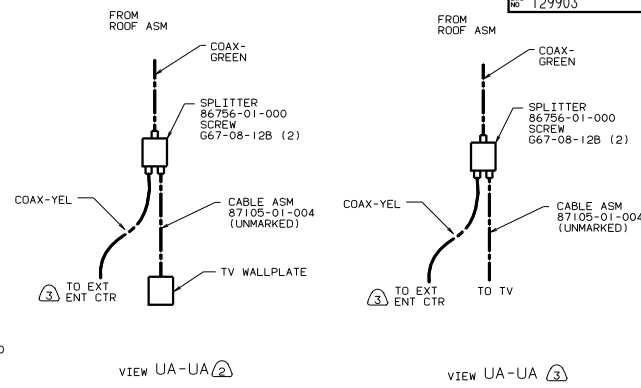


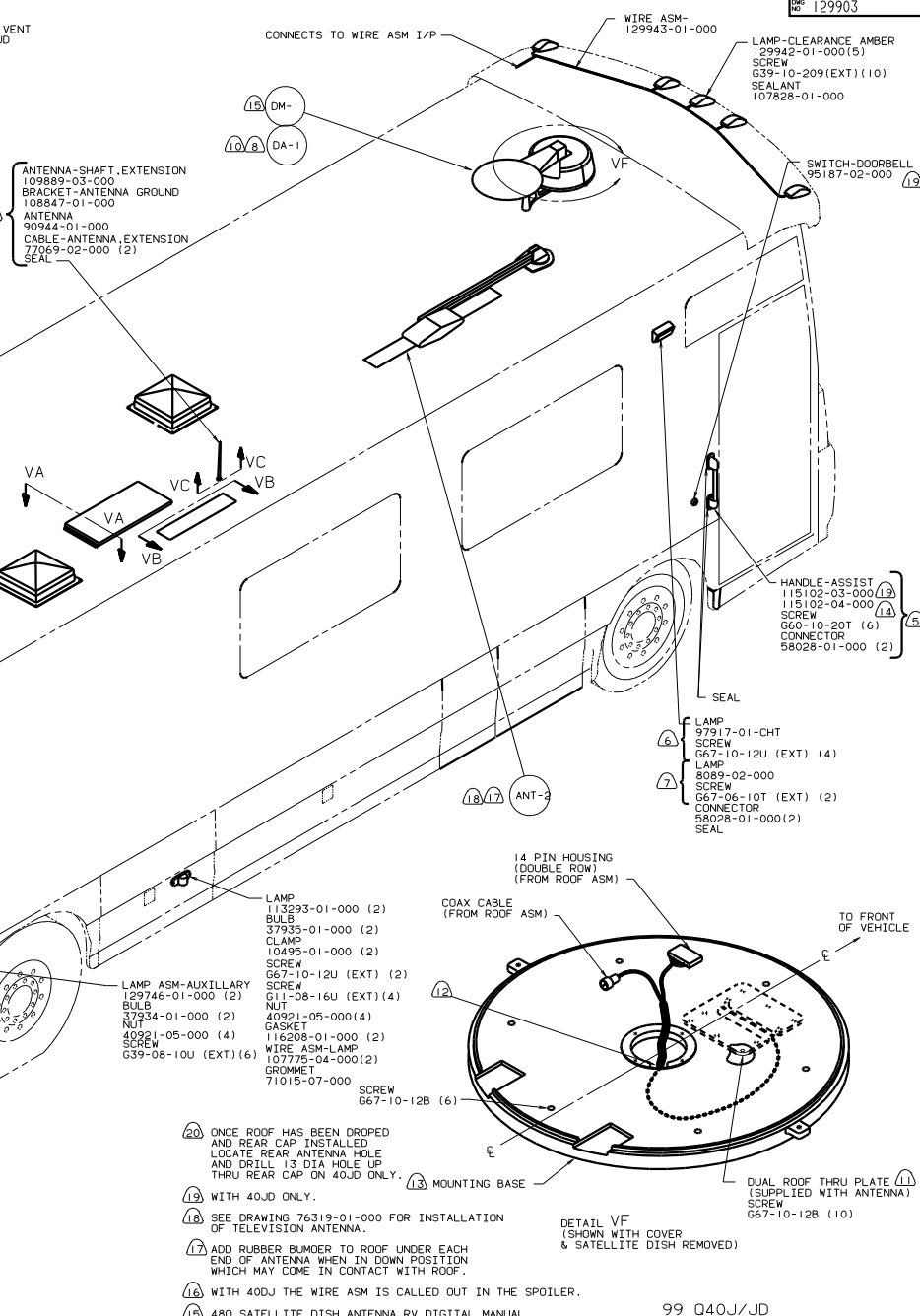
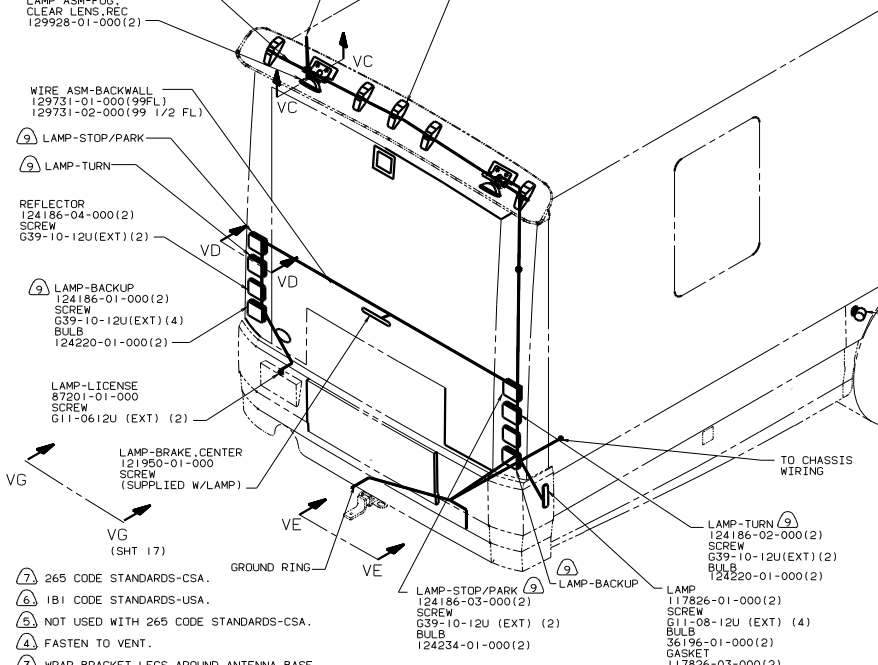
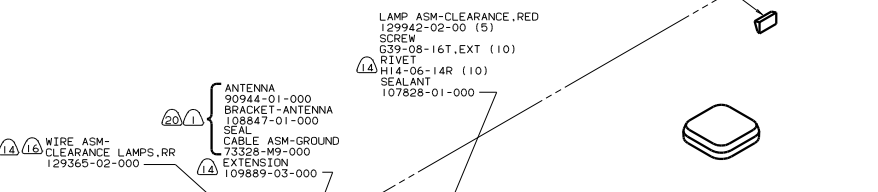
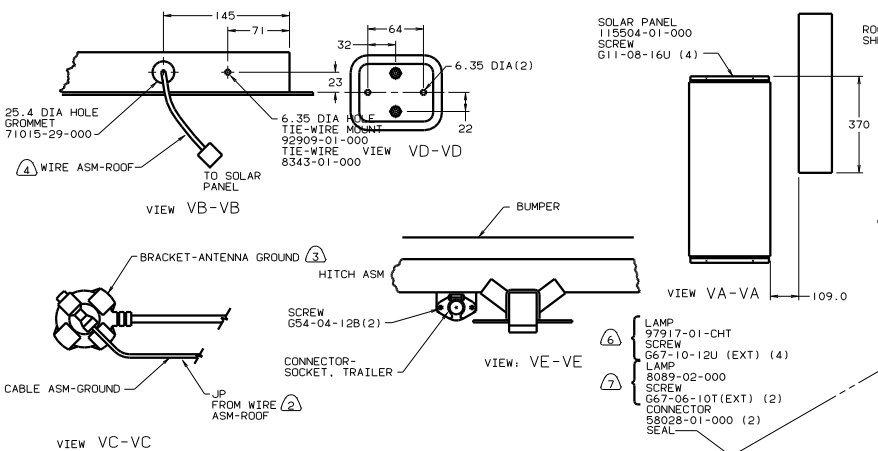
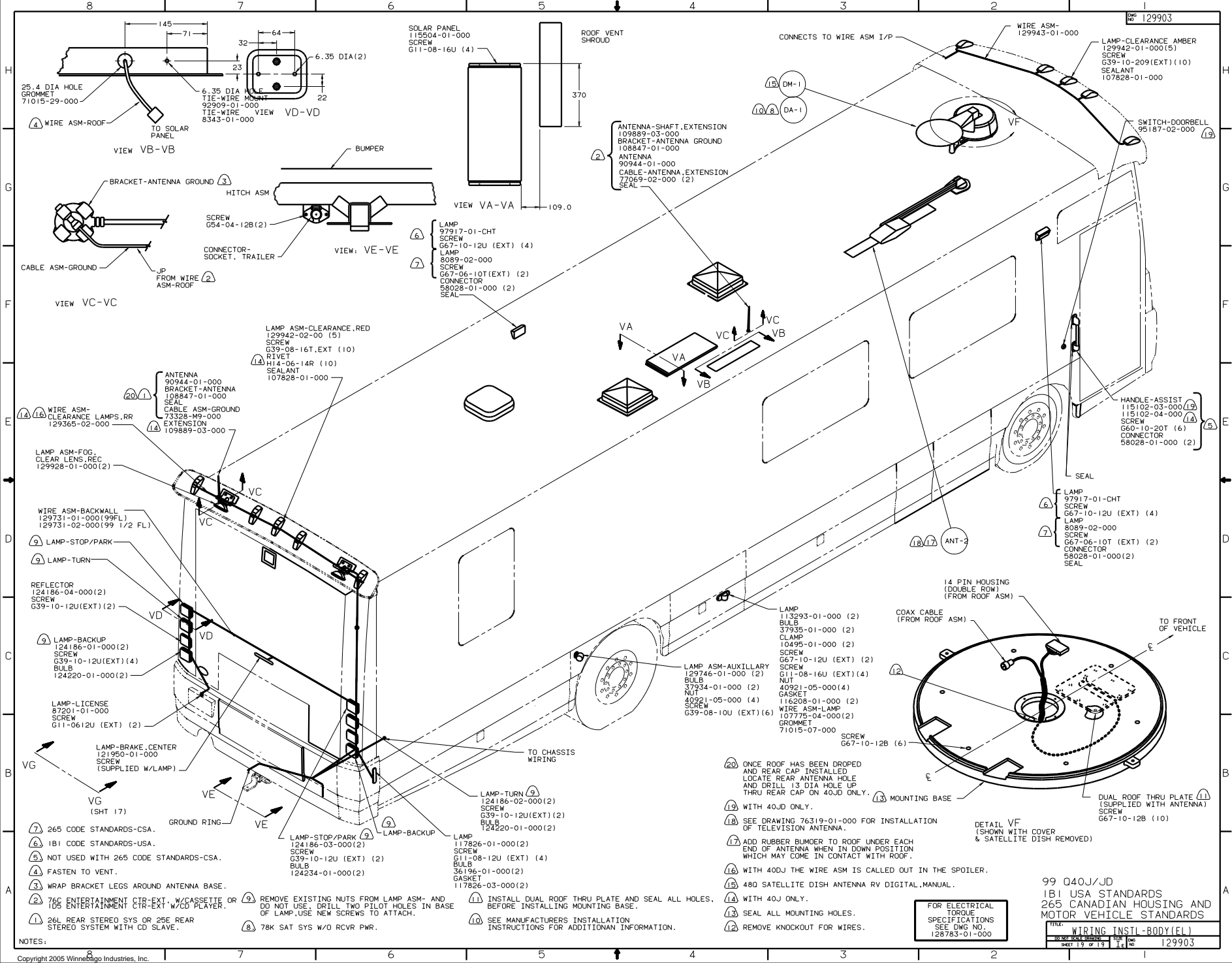
PLATE-WALL, TELEPHONE/COAX
130686-01-CHT
LABEL
87236-01-000
SCREW
G39-08-08U (2)

- NOTES:
- (1) 10W TV (REAR) - AC 19".
 - (2) TV (REAR) - WITHOUT.
 - (3) COAX ROUTED IN ROOF.

FOR ELECTRICAL TORQUE SPECIFICATIONS SEE DWG NO. 128783-01-000

99 Q40J/JD
1B1 USA STANDARDS
265 CANADIAN HOUSING AND MOTOR VEHICLE STANDARDS

TITLE	WIRING INSTL - BODY (COAX)
NO. OF SHEETS	18 OF 19
DWG NO.	129903



- NOTES:
- 1) 265 CODE STANDARDS-CSA.
 - 2) 181 CODE STANDARDS-USA.
 - 3) NOT USED WITH 265 CODE STANDARDS-CSA.
 - 4) FASTEN TO VENT.
 - 5) WRAP BRACKET LEGS AROUND ANTENNA BASE.
 - 6) 76C ENTERTAINMENT CIR-EXT, W/CASSETTE OR 105 ENTERTAINMENT CIR-EXT W/CD PLAYER.
 - 7) REMOVE EXISTING NUTS FROM LAMP ASM- AND DO NOT USE. DRILL TWO PILOT HOLES IN BASE OF LAMP-USE NEW SCREWS TO ATTACH.
 - 8) 26L REAR STEREO SYS OR 25E REAR STEREO SYSTEM WITH CD SLAVE.
 - 9) 78K SAT SYS W/O RCVR PWR.
 - 10) INSTALL DUAL ROOF THRU PLATE AND SEAL ALL HOLES. BEFORE INSTALLING MOUNTING BASE.
 - 11) SEE MANUFACTURERS INSTALLATION INSTRUCTIONS FOR ADDITIONAL INFORMATION.

- 12) ONCE ROOF HAS BEEN DROPPED AND REAR CAP INSTALLED LOCATE REAR ANTENNA HOLE AND DRILL 13 DIA HOLE UP THRU REAR CAP ON 40J ONLY.
- 13) WITH 40J ONLY.
- 14) SEE DRAWING 76319-01-000 FOR INSTALLATION OF TELEVISION ANTENNA.
- 15) ADD RUBBER BUMPER TO ROOF UNDER EACH END OF ANTENNA WHEN IN DOWN POSITION WHICH MAY COME IN CONTACT WITH ROOF.
- 16) WITH 40J THE WIRE ASM IS CALLED OUT IN THE SPOILER.
- 17) 480 SATELLITE DISH ANTENNA RV DIGITAL MANUAL.
- 18) WITH 40J ONLY.
- 19) SEAL ALL MOUNTING HOLES.
- 20) REMOVE KNOCKOUT FOR WIRES.

FOR ELECTRICAL TORQUE SPECIFICATIONS SEE DWG NO. 128783-01-000

99 040J/JD
181 USA STANDARDS
265 CANADIAN HOUSING AND MOTOR VEHICLE STANDARDS

FILE:	WIRING INST-BODY(FL)
NO. OF SHEETS:	1
SHEET NO. OF 19:	1
DATE:	129903