



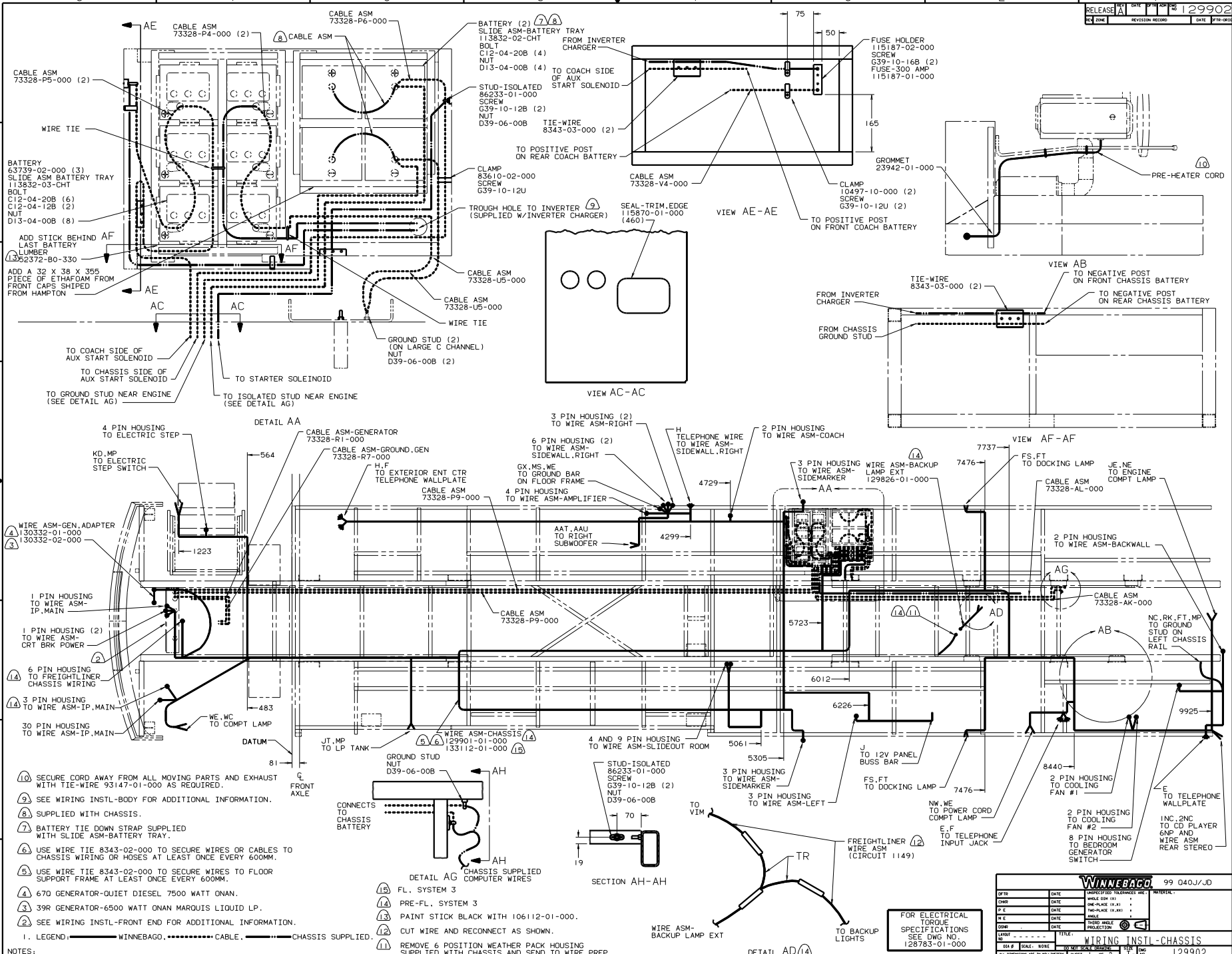
DANGER

Danger of electrical shock, burns or death. Always remove all power sources before attempting any repair, service or diagnostic work. Power can be present from shore power, generator, inverter or battery. All power sources must be disabled and secured before performing any service.



CAUTION

If you lack the skills, tools or equipment to perform diagnostic or repair work leave such work to an authorized Winnebago Industries dealer or other qualified shop.

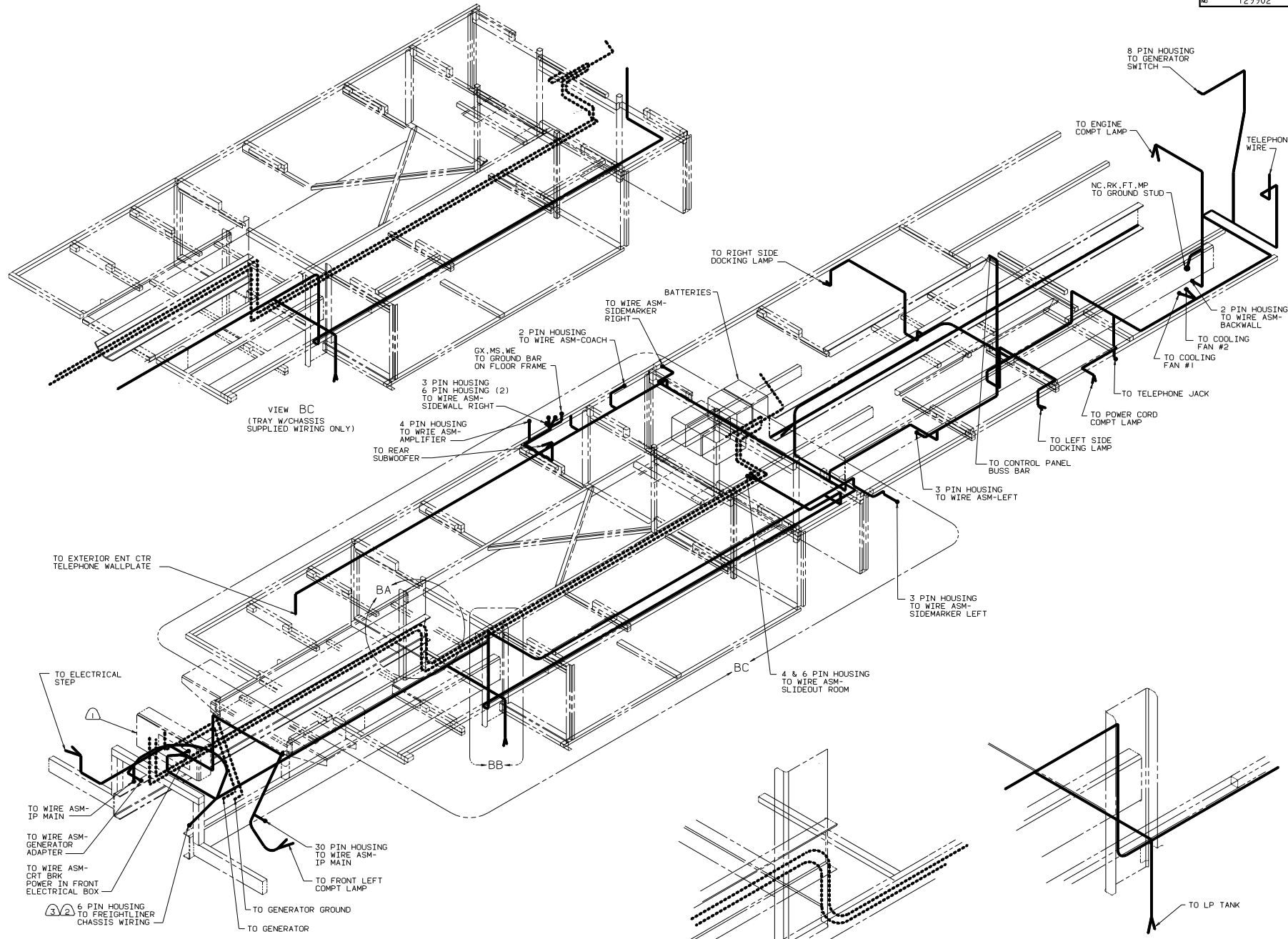


- ⑩ SECURE CORD AWAY FROM ALL MOVING PARTS AND EXHAUST WITH TIE-WIRE 8343-01-000 AS REQUIRED.
 - ⑨ SEE WIRING INSTL-BODY FOR ADDITIONAL INFORMATION.
 - ⑧ SUPPLIED WITH CHASSIS.
 - ⑦ BATTERY TIE DOWN STRAP SUPPLIED WITH SLIDE ASM-BATTERY TRAY.
 - ⑥ USE WIRE TIE 8343-02-000 TO SECURE WIRES OR CABLES TO CHASSIS WIRING OR HOSES AT LEAST ONCE EVERY 600MM.
 - ⑤ USE WIRE TIE 8343-02-000 TO SECURE WIRES TO FLOOR SUPPORT FRAME AT LEAST ONCE EVERY 600MM.
 - ④ 670 GENERATOR-QUIET DIESEL 7500 WATT ONAN.
 - ③ 39R GENERATOR-6500 WATT ONAN MARQUIS LIQUID LP.
 - ② SEE WIRING INSTL-FRONT END FOR ADDITIONAL INFORMATION.
1. LEGEND: — WINNEBAGO, CABLE, — CHASSIS SUPPLIED.

- ⑬ FL. SYSTEM 3
- ⑭ PRE-FL. SYSTEM 3
- ⑮ PAINT STICK BLACK WITH 106112-01-000.
- ⑯ CUT WIRE AND RECONNECT AS SHOWN.
- ⑰ REMOVE 6 POSITION WEATHER PACK HOUSING SUPPLIED WITH CHASSIS AND SEND TO WIRE PREP.

FOR ELECTRICAL TORQUE SPECIFICATIONS SEE DWG NO. 128783-01-000

WINNEBAGO		99 040J/JD	
DATE	UNDESIGNED TOLERANCES ARE:	DATE	MATERIAL
DATE	WHOLE DIM (1)	DATE	WHOLE DIM (1)
DATE	ONE-PLACE (1.21)	DATE	ONE-PLACE (1.21)
DATE	TWO-PLACE (1.21)	DATE	TWO-PLACE (1.21)
DATE	THREE-PLACE (1.21)	DATE	THREE-PLACE (1.21)
DATE	FOUR-PLACE (1.21)	DATE	FOUR-PLACE (1.21)
DATE	FIVE-PLACE (1.21)	DATE	FIVE-PLACE (1.21)
DATE	SIX-PLACE (1.21)	DATE	SIX-PLACE (1.21)
DATE	SEVEN-PLACE (1.21)	DATE	SEVEN-PLACE (1.21)
DATE	EIGHT-PLACE (1.21)	DATE	EIGHT-PLACE (1.21)
DATE	NINE-PLACE (1.21)	DATE	NINE-PLACE (1.21)
DATE	TEN-PLACE (1.21)	DATE	TEN-PLACE (1.21)
DATE	ELEVEN-PLACE (1.21)	DATE	ELEVEN-PLACE (1.21)
DATE	TWELVE-PLACE (1.21)	DATE	TWELVE-PLACE (1.21)
DATE	THIRTEEN-PLACE (1.21)	DATE	THIRTEEN-PLACE (1.21)
DATE	FOURTEEN-PLACE (1.21)	DATE	FOURTEEN-PLACE (1.21)
DATE	FIFTEEN-PLACE (1.21)	DATE	FIFTEEN-PLACE (1.21)
DATE	SIXTEEN-PLACE (1.21)	DATE	SIXTEEN-PLACE (1.21)
DATE	SEVENTEEN-PLACE (1.21)	DATE	SEVENTEEN-PLACE (1.21)
DATE	EIGHTEEN-PLACE (1.21)	DATE	EIGHTEEN-PLACE (1.21)
DATE	NINETEEN-PLACE (1.21)	DATE	NINETEEN-PLACE (1.21)
DATE	TWENTY-PLACE (1.21)	DATE	TWENTY-PLACE (1.21)
DATE	UNDESIGNED TOLERANCES ARE:	DATE	UNDESIGNED TOLERANCES ARE:
DATE	WHOLE DIM (1)	DATE	WHOLE DIM (1)
DATE	ONE-PLACE (1.21)	DATE	ONE-PLACE (1.21)
DATE	TWO-PLACE (1.21)	DATE	TWO-PLACE (1.21)
DATE	THREE-PLACE (1.21)	DATE	THREE-PLACE (1.21)
DATE	FOUR-PLACE (1.21)	DATE	FOUR-PLACE (1.21)
DATE	FIVE-PLACE (1.21)	DATE	FIVE-PLACE (1.21)
DATE	SIX-PLACE (1.21)	DATE	SIX-PLACE (1.21)
DATE	SEVEN-PLACE (1.21)	DATE	SEVEN-PLACE (1.21)
DATE	EIGHT-PLACE (1.21)	DATE	EIGHT-PLACE (1.21)
DATE	NINE-PLACE (1.21)	DATE	NINE-PLACE (1.21)
DATE	TEN-PLACE (1.21)	DATE	TEN-PLACE (1.21)
DATE	ELEVEN-PLACE (1.21)	DATE	ELEVEN-PLACE (1.21)
DATE	TWELVE-PLACE (1.21)	DATE	TWELVE-PLACE (1.21)
DATE	THIRTEEN-PLACE (1.21)	DATE	THIRTEEN-PLACE (1.21)
DATE	FOURTEEN-PLACE (1.21)	DATE	FOURTEEN-PLACE (1.21)
DATE	FIFTEEN-PLACE (1.21)	DATE	FIFTEEN-PLACE (1.21)
DATE	SIXTEEN-PLACE (1.21)	DATE	SIXTEEN-PLACE (1.21)
DATE	SEVENTEEN-PLACE (1.21)	DATE	SEVENTEEN-PLACE (1.21)
DATE	EIGHTEEN-PLACE (1.21)	DATE	EIGHTEEN-PLACE (1.21)
DATE	NINETEEN-PLACE (1.21)	DATE	NINETEEN-PLACE (1.21)
DATE	TWENTY-PLACE (1.21)	DATE	TWENTY-PLACE (1.21)



VIEW BC
(TRAY W/CHASSIS
SUPPLIED WIRING ONLY)

VIEW BA

VIEW BB

- NOTES:
- ③ PRE-FL. SYSTEM 3
 - ② REMOVE 6 POSITION WEATHER PACK HOUSING SUPPLIED WITH CHASSIS AND SEND TO WIRE PREP.
 - ① SEE WIRING INSTL-FRONT END FOR ADDITIONAL INFORMATION.

FOR ELECTRICAL
TORQUE
SPECIFICATIONS
SEE DWG NO.
128783-01-000

99 Q40J/JD
TITLE: WIRING INSTL-CHASSIS
SHEET 2 OF 2
129902