



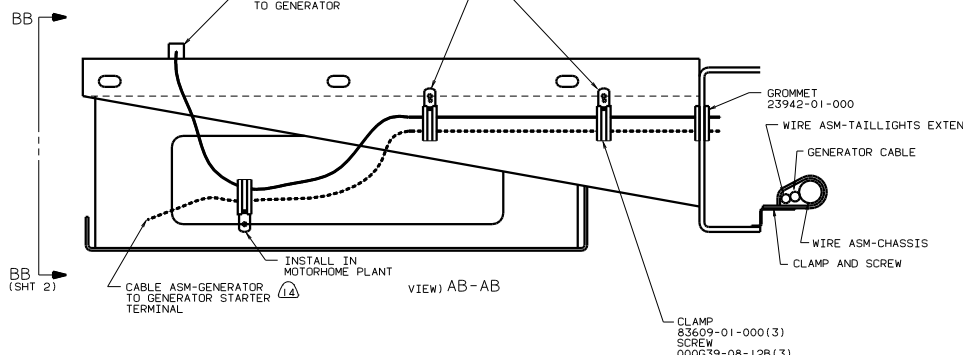
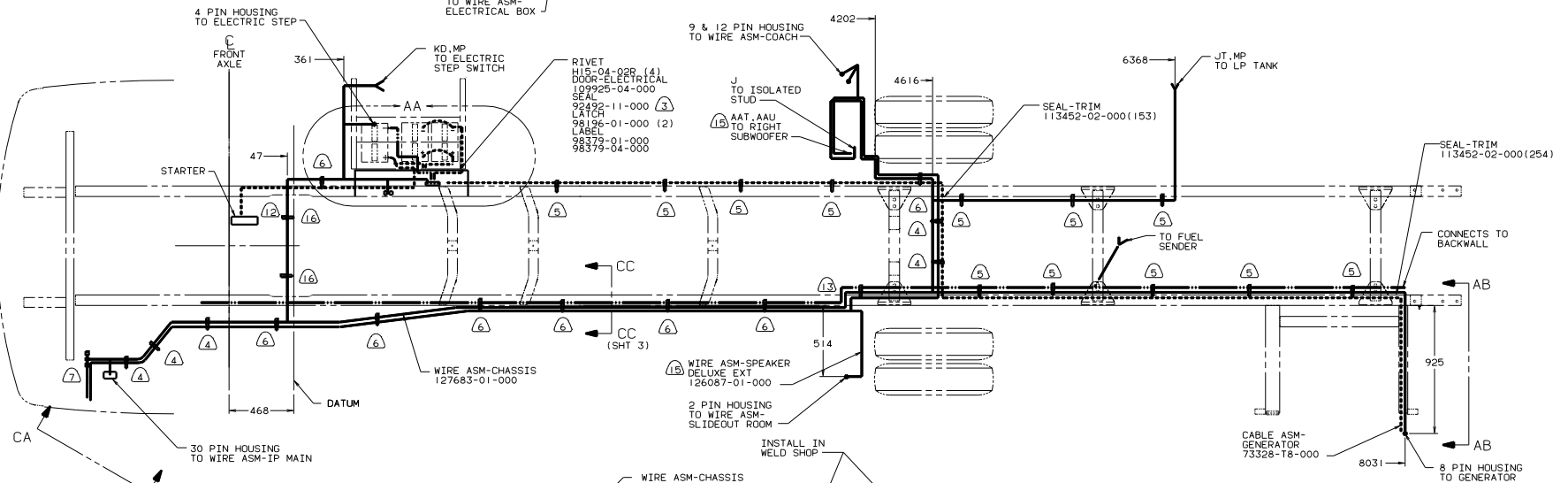
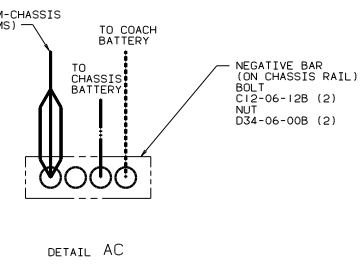
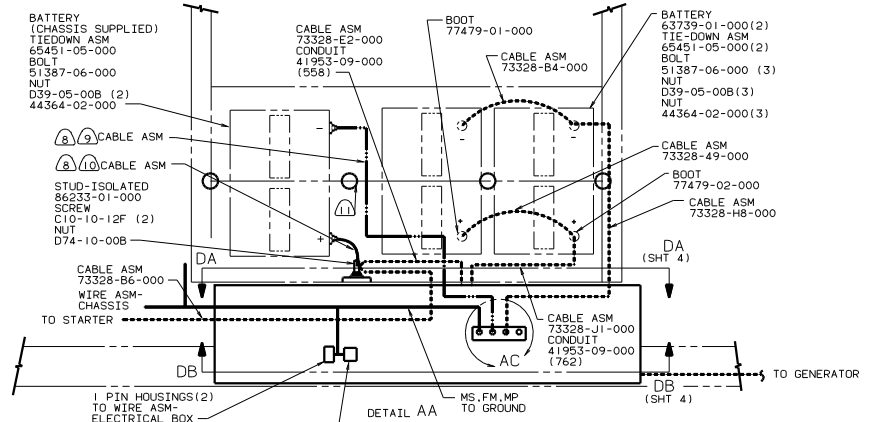
**DANGER**

**Danger of electrical shock, burns or death.** Always remove all power sources before attempting any repair, service or diagnostic work. Power can be present from shore power, generator, inverter or battery. All power sources must be disabled and secured before performing any service.



**CAUTION**

If you lack the skills, tools or equipment to perform diagnostic or repair work leave such work to an authorized Winnebago Industries dealer or other qualified shop.



- 16 21V SOUND SYSTEM DELUXE
- 14 SECURE SO WIRES DO NOT CONTACT EXHAUST.
- 13 ROUTE CABLES OVER CHASSIS RAIL IN THIS AREA. FOLLOW ORIGINAL CABLE PATHS INSIDE RAIL.
- 12 BATTERY CABLE MUST BE INSTALLED TO STARTER MOTOR BEFORE ENGINE WIRING HARNESS AND ROUTED IN SUCH A MANNER AS TO PREVENT ANY POSSIBLE DEGRADATION FROM THE EXHAUST SYSTEM.
- 11 USE TWO NUTS HERE TO ACCOUNT FOR BATTERY HEIGHT DIFFERENCE.
- 10 TRIM CABLE TO 400MM, ADD TERMINAL 8348-01-000.
- 9 TRIM CABLE TO 600MM, ADD TERMINAL 8348-01-000.
- 8 SUPPLIED WITH CHASSIS.
- 7 SEE WIRING INSTL-FRONT END FOR ADDITIONAL INFORMATION.
- 6 CLAMP 10497-02-000 AND SCREW G39-08-12B.
- 5 CLAMP 83609-01-000 AND SCREW G39-08-12B.
- 4 CLAMP 83610-01-000, SCREW G39-08-12B.
- 3 PLACE AROUND ENTIRE PERIMETER OF DOOR WITH SEAM AT TOP.

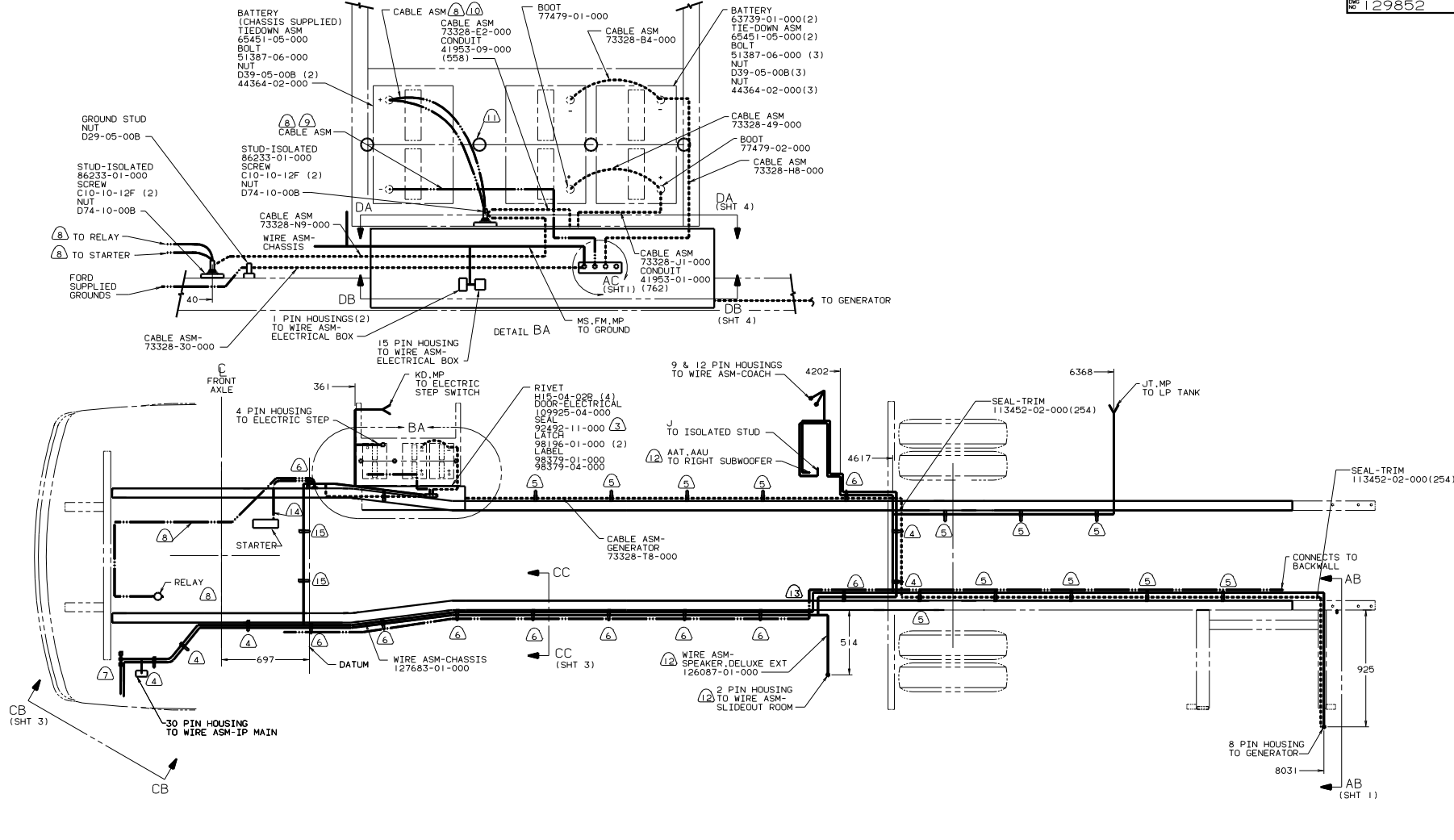
2. SECURE CONDUIT 41953-01-02, -03, -10 AND -11 OVER ALL WIRES IN CONTACT WITH SHARP EDGES.

1. LEGEND: — WINNEBAGO; ..... CABLE; - - - - - CHASSIS SUPPLIED WIRING. 16 USE WIRE TIE 8343-03-000.

FOR ELECTRICAL TORQUE SPECIFICATIONS SEE DWG NO. 128783-01-000

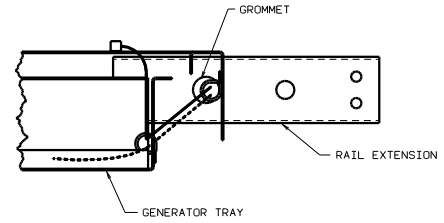
ICV PE CHEVROLET-21,000# GVWR  
 IBI USA STANDARDS  
 265 CANADIAN HOUSING AND MOTOR VEHICLE STANDARDS

WINNEBAGO		99 L34Y
OF IN	DATE	UNSPECIFIED TOLERANCES ARE:
CHP	DATE	WHOLE DIMS (1) ± 0.1
FR	DATE	ONE-PLACE (1) ± 0.1
PL	DATE	TWO-PLACE (1) ± 0.1
DATE	DATE	ANGLE
DATE	DATE	THIRD ANGLE PRACTICE
DATE	DATE	DATE
TITLE: WIRING INSTL-CHASSIS		REF 127684-E 1
SHEET 1 OF 4		129852



- (12) 21V SOUND SYSTEM DELUXE
  - (11) USE TWO NUTS HERE TO ACCOUNT FOR BATTERY HEIGHT DIFFERENCE.
  - (10) CUT 4 AND 6GA CABLES 500MM FROM BATTERY TERMINAL; ADD TERMINAL 8331-01-000(2) TO 4GA CABLES AND TERMINAL 8360-01-000(2) TO 6GA CABLES. CONNECT ALL FOUR TERMINALS TO ISOLATED STUD.
  - (9) TRIM CABLE TO 600MM. ADD TERMINAL 8348-01-000.
  - (8) SUPPLIED WITH CHASSIS.
  - (7) SEE WIRING INSTL-FRONT END FOR ADDITIONAL INFORMATION.
  - (6) CLAMP 10497-02-000 AND SCREW G39-08-000.
  - (5) CLAMP 83609-01-000 AND SCREW G39-08-000.
  - (4) CLAMP 83610-01-000. SCREW G39-08-12B.
  - (3) PLACE AROUND ENTIRE PERIMETER OF DOOR WITH SEAM AT TOP.
2. SECURE CONDUIT 41953-01-02, -03, -10 AND -11 OVER ALL WIRES IN CONTACT WITH SHARP EDGES.
1. LEGEND: — WINNEBAGO; ..... CABLE; - - - CHASSIS SUPPLIED WIRING.

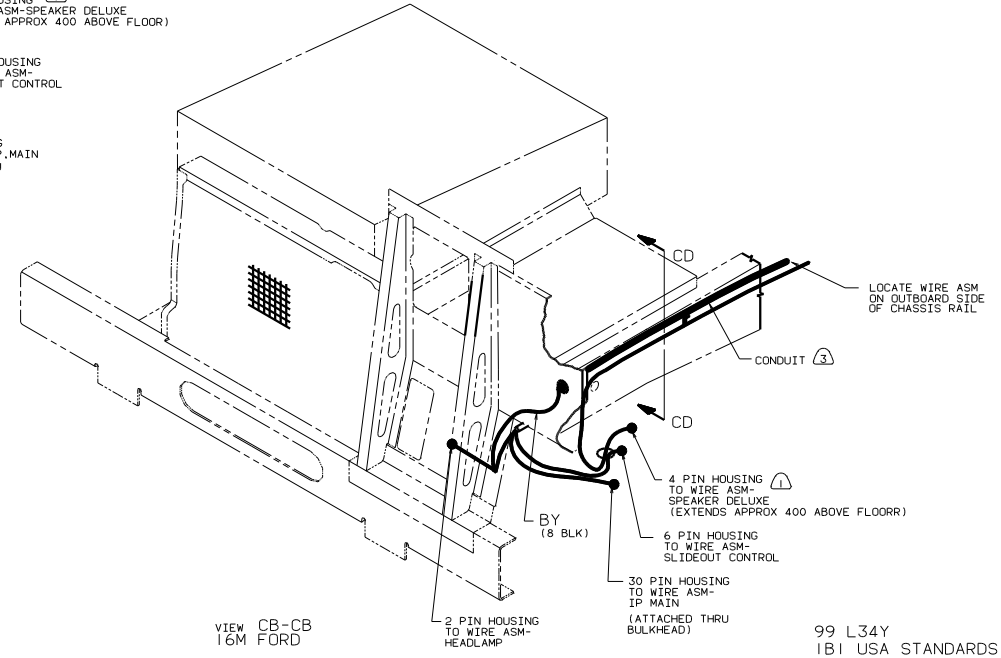
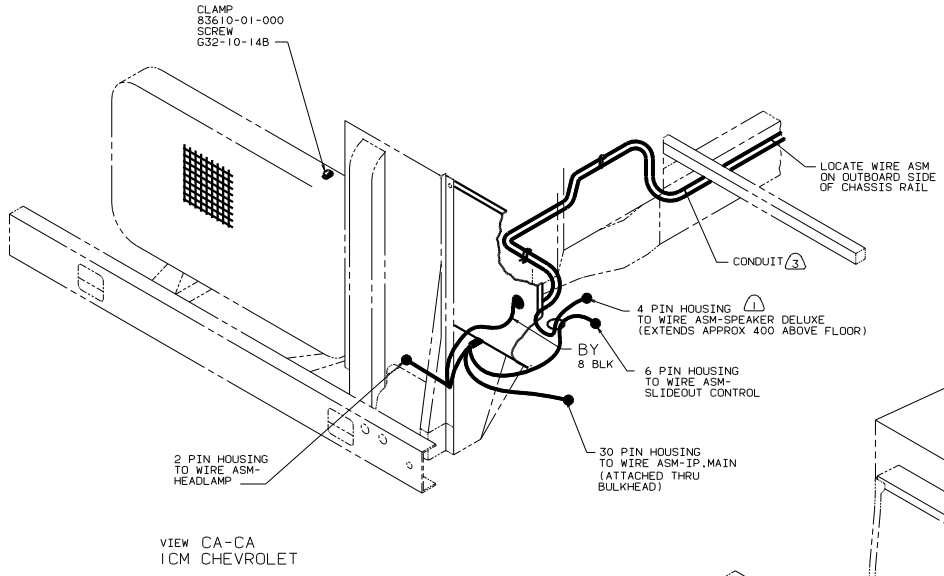
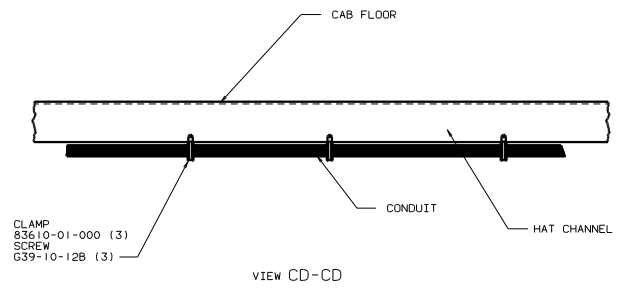
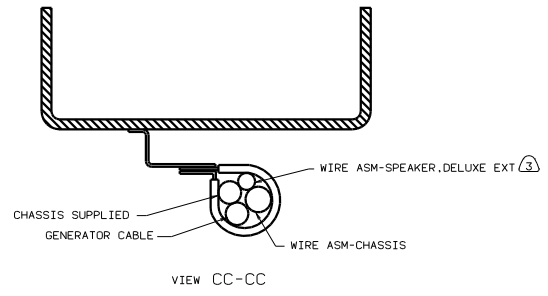
- (13) USE WIRE TIE 8343-03-000.
- (14) BATTERY CABLE MUST BE INSTALLED TO STARTER MOTOR BEFORE ENGINE WIRING HARNESS AND ROUTED IN SUCH A MANNER AS TO PREVENT ANY POSSIBLE DEGRADATION FROM THE EXHAUST SYSTEM.
- (15) ROUTE CABLES OVER CHASSIS RAIL IN THIS AREA. FOLLOW ORIGINAL CABLE PATHS INSIDE RAIL.



FOR ELECTRICAL TORQUE SPECIFICATIONS SEE DWG NO. 128783-01-000

99 L34Y  
16M PE FORD-20,000# GVWR  
IB1 USA STANDARDS  
265 CANADIAN HOUSING AND MOTOR VEHICLE STANDARDS

TITLE	WIRING INSTL-CHASSIS
NO. OF SCALE COPIES	1
SHEET	2 OF 4
REV	1
DATE	129852

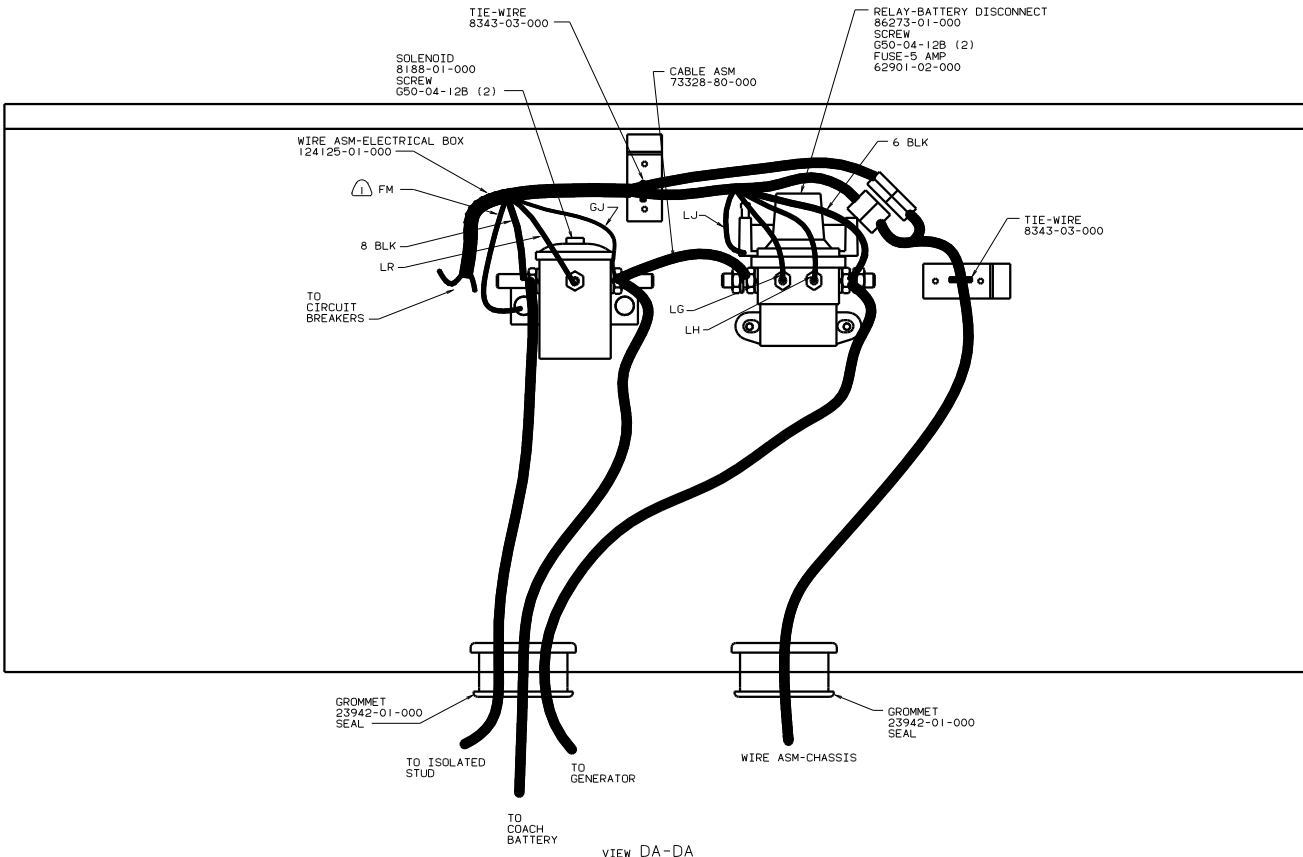


- 6. CUT OFF EXCESS END OF WIRE TIE.
- 5. CONNECT CABLES TO COACH SIDE OF BATTERY DISCONNECT WHEN BATTERY DISCONNECT IS USED.
- 4. FOR ADDITIONAL INFORMATION SEE WIRING INSTALATION FRONT END.
- (3) COVER WITH CONDUIT 41953-10-000 AND 41953-11-000 AS REQUIRED.
- (2) SUPPLIED WITH CHASSIS.
- (1) WITH DELUXE SOUND. (21V)

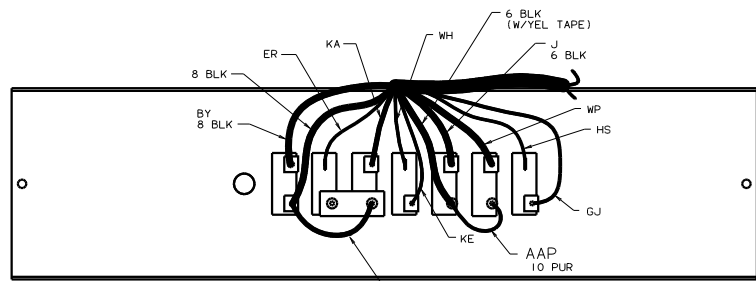
FOR ELECTRICAL TORQUE SPECIFICATIONS SEE DWG NO. 128783-01-000

99 L34Y  
181 USA STANDARDS  
265 CANADIAN HOUSING AND MOTOR VEHICLE STANDARDS

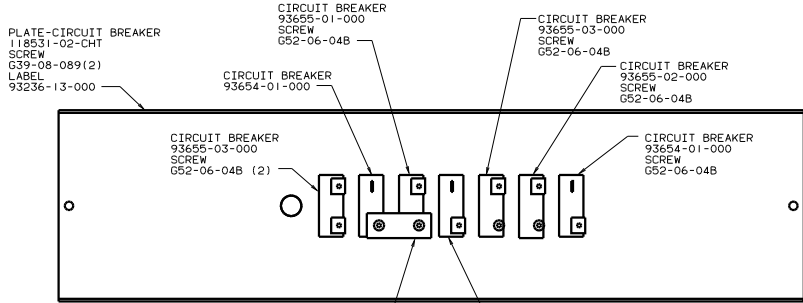
TITLE		129852	
30	NO SCALE	11	REV
SHEET 3	OF 4	1	NO



VIEW DA-DA



VIEW DB-DB (WIRING)



VIEW DB-DB (HARDWARE)

NOTES: SECURE WITH SOLENOID MOUNTING SCREW.

FOR ELECTRICAL TORQUE SPECIFICATIONS SEE DWG NO. 128783-01-000

99 L34Y  
 1B1 USA STANDARDS  
 265 CANADIAN HOUSING AND MOTOR VEHICLE STANDARDS

TITLE: WIRING INSTL-CHASSIS	
NO. OF SHEETS: 4	SHEET: 4 OF 4
DATE: 11/01/00	REV: 1
129852	