



**DANGER**

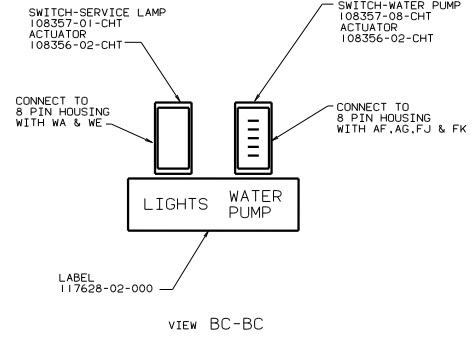
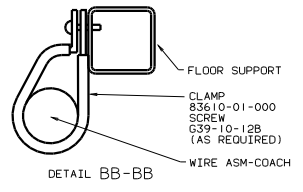
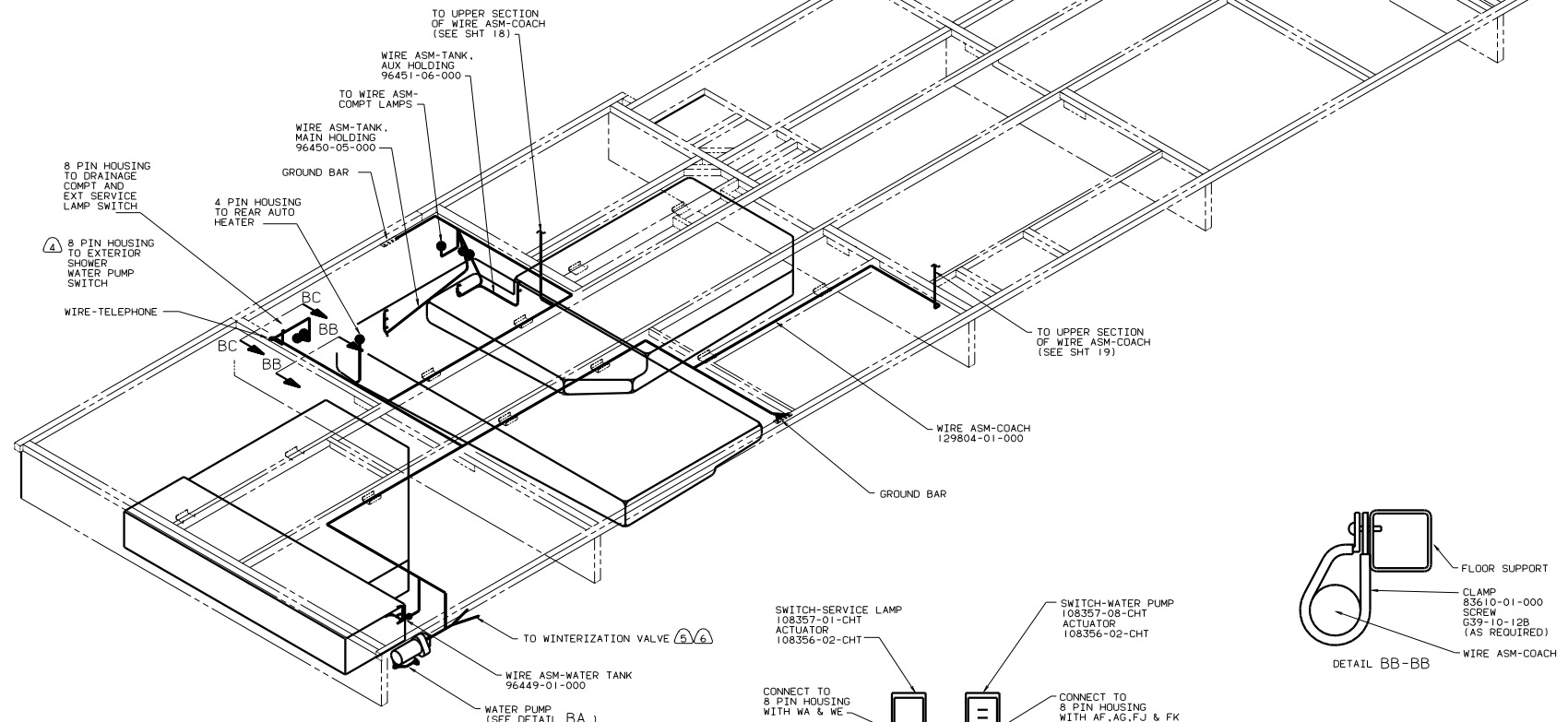
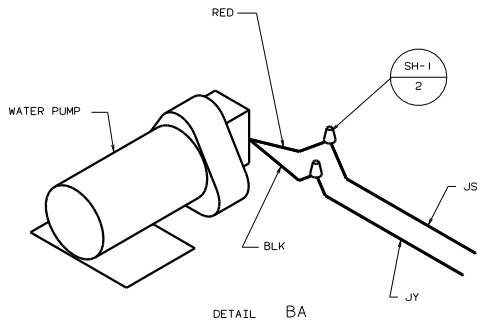
**Danger of electrical shock, burns or death.** Always remove all power sources before attempting any repair, service or diagnostic work. Power can be present from shore power, generator, inverter or battery. All power sources must be disabled and secured before performing any service.



**CAUTION**

If you lack the skills, tools or equipment to perform diagnostic or repair work leave such work to an authorized Winnebago Industries dealer or other qualified shop.





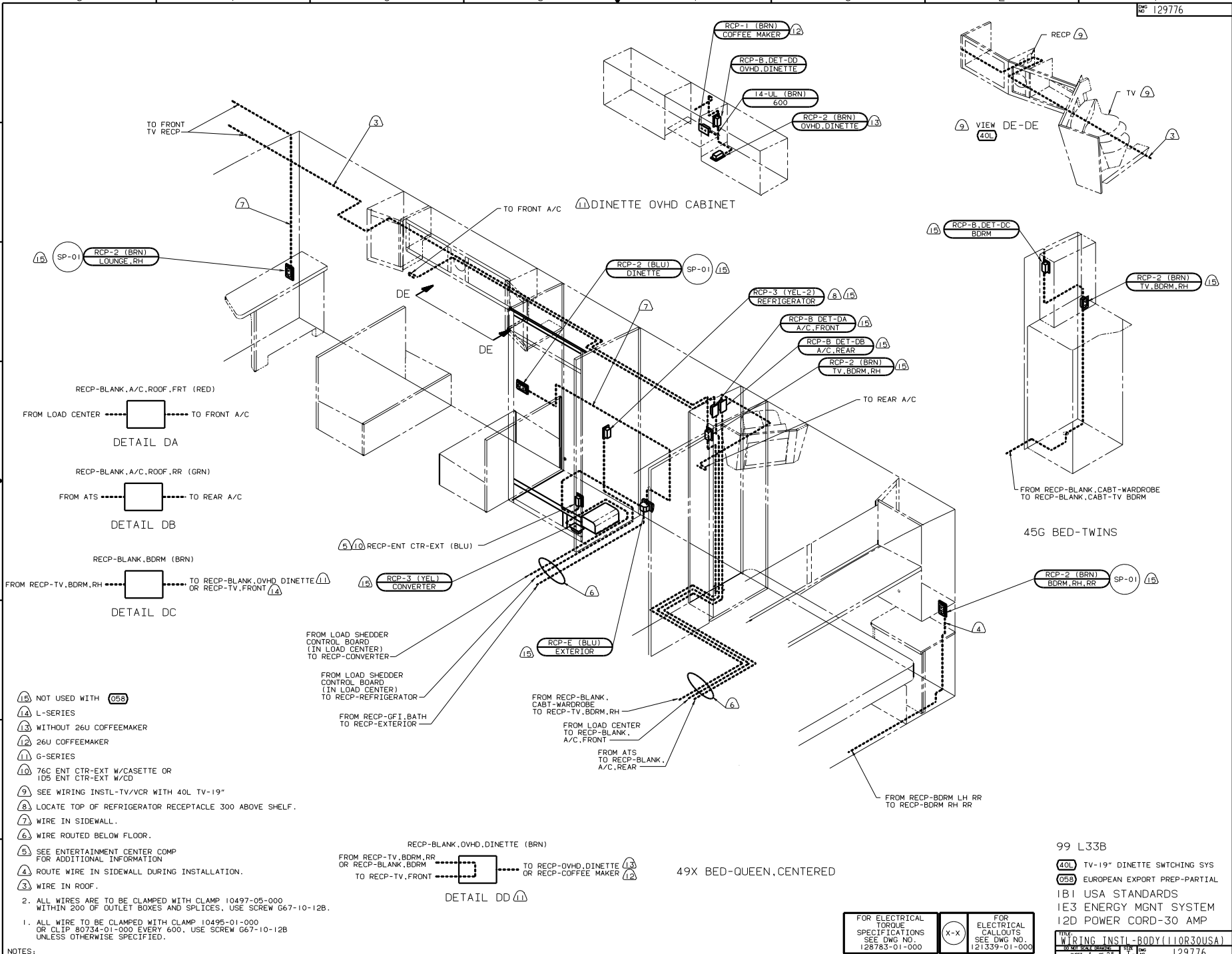
- ⑥ 530 WATER SYSTEM WINTERIZATION KIT AUTOMATIC.
- ⑤ 53J WATER HEATER WINTERIZATION BY PASS VALVE (MANUAL)
- ④ 64R EXTERIOR WASH STATION W/PUMP SWITCH
- 3. WIRES THAT REST ON WIRE TRAYS ARE TO BE TIED DOWN WITH WIRE TIE 8343-02-000.
- 2. CLAMP TO FLOOR SUPPORT TUBES AS NECESSARY WITH CLAMP 10497-01-000.
- 1. ALL WIRES TO BE CLAMPED WITH CLAMP 10495-01-000 OR CLIP 80734-02-000 EVERY 700. USE SCREW G67-10-12B UNLESS OTHERWISE SPECIFIED.

NOTES:

99 G & L33B  
 038 EUROPEAN EXPORT PREP-PARTIAL  
 IBI USA STANDARDS  
 265 CANADIAN HOUSING AND  
 MOTOR VEHICLE STANDARDS

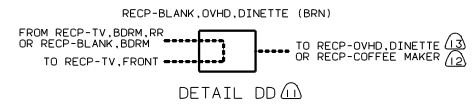
TITLE		WIRING INSTL-BODY (BL 12V)	
DATE	SCALE	REV	ENG
		2	1
SHEET 2 OF 25		129776	





- (15) NOT USED WITH 058
  - (14) L-SERIES
  - (13) WITHOUT 26U COFFEEMAKER
  - (12) 26U COFFEEMAKER
  - (11) G-SERIES
  - (10) 76C ENT CTR-EXT W/CASSETTE OR 105 ENT CTR-EXT W/CD
  - (9) SEE WIRING INSTL-TV/VCR WITH 40L TV-19"
  - (8) LOCATE TOP OF REFRIGERATOR RECEPTACLE 300 ABOVE SHELF.
  - (7) WIRE IN SIDEWALL.
  - (6) WIRE ROUTED BELOW FLOOR.
  - (5) SEE ENTERTAINMENT CENTER COMP FOR ADDITIONAL INFORMATION
  - (4) ROUTE WIRE IN SIDEWALL DURING INSTALLATION.
  - (3) WIRE IN ROOF.
2. ALL WIRES ARE TO BE CLAMPED WITH CLAMP 10497-05-000 WITHIN 200 OF OUTLET BOXES AND SPLICES. USE SCREW G67-10-12B.
1. ALL WIRE TO BE CLAMPED WITH CLAMP 10495-01-000 OR CLIP 80734-01-000 EVERY 600. USE SCREW G67-10-12B UNLESS OTHERWISE SPECIFIED.

NOTES:



DETAIL DD (13)

FOR ELECTRICAL TORQUE SPECIFICATIONS SEE DWG NO 128783-01-000	X-X	FOR ELECTRICAL CALLOUTS SEE DWG NO 121339-01-000
---------------------------------------------------------------	-----	--------------------------------------------------

99 L33B

(40L) TV-19" DINETTE SWITCHING SYS

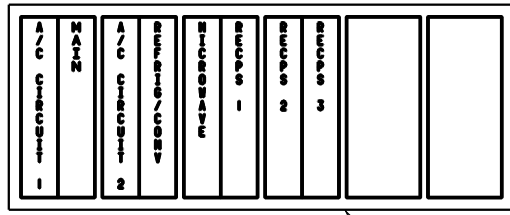
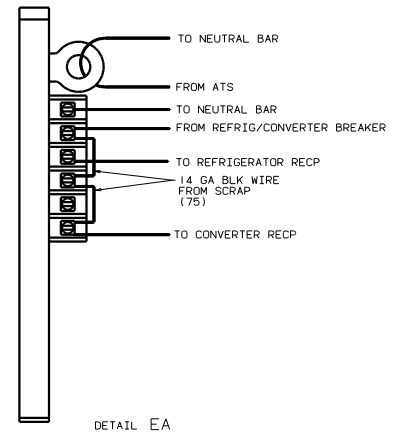
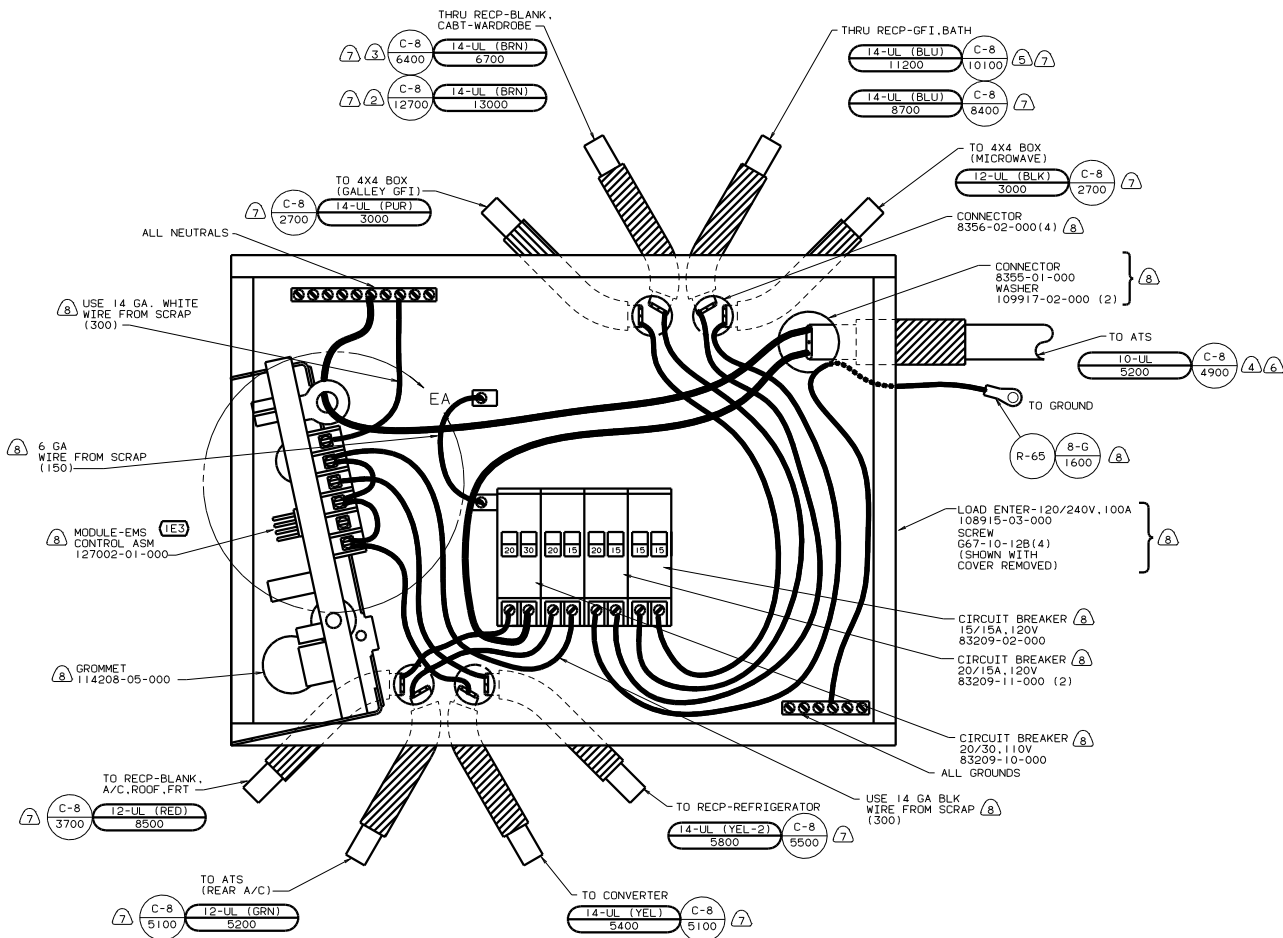
(058) EUROPEAN EXPORT PREP-PARTIAL

IB1 USA STANDARDS

IE3 ENERGY MGMT SYSTEM

12D POWER CORD-30 AMP

TITLE	WIRING INSTL-BODY(110R30USA)
DATE	11/03/05
SHEET	4 OF 25
FIG NO	1E
DWG NO	129776



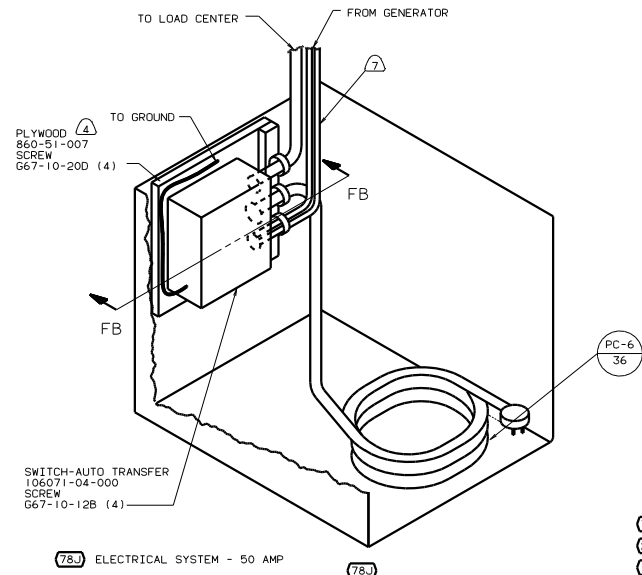
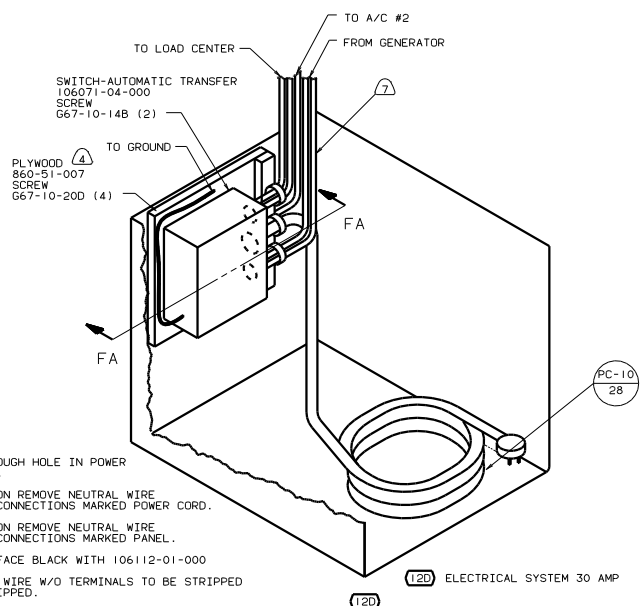
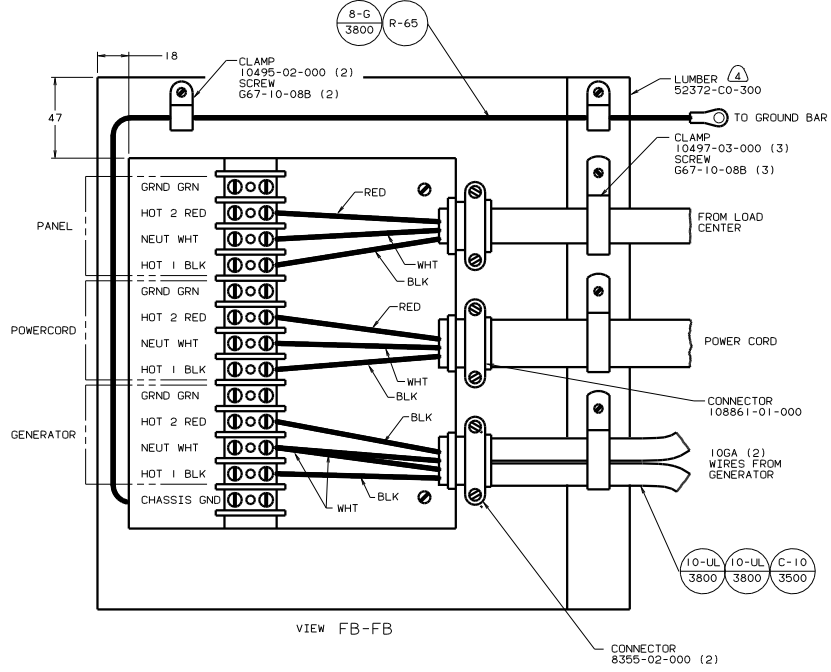
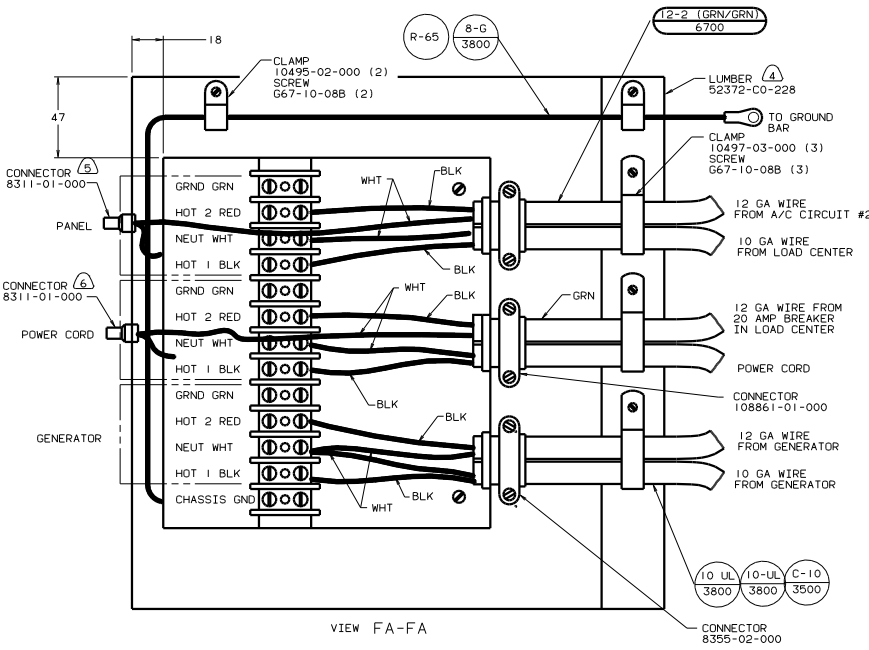
INSTALL LABEL ON FRONT PANEL BELOW BREAKERS BETWEEN MOUNTING HOLES

LABEL 95721-27-000

- Ⓐ NOT USED WITH 058
  - ⑦ WIRES 14-UL & 12-UL TO BE REPLACED WITH 112593-01-000 WITH 058 EUROPEAN EXPORT PREP PACKAGE-PARTIAL.
  - Ⓐ WIRE 10-UL TO BE REPLACED WITH 112593-02-000 WITH 058 EUROPEAN EXPORT PREP PACKAGE-PARTIAL.
  - Ⓐ 76C EXTERIOR ENTERTAINMENT CENTER W/CASSETTE OR 105 EXTERIOR ENTERTAINMENT CENTER W/COMPACT DISC.
  - ④ WIRE MUST BE 700 LONG INSIDE BOX.
  - ③ 45G BED-TWINS.
  - ② 49X BED-QUEEN, CENTERED.
1. ALL GROUND WIRES TO BE COVERED WITH TUBING 8041-02-000.

99 G & L33B  
 058 EUROPEAN EXPORT PREP-PARTIAL  
 IBI USA STANDARDS  
 IE3 ENERGY MGMT SYSTEM  
 12D POWER CORD-30 AMPS

FOR ELECTRICAL TORQUE SPECIFICATIONS SEE DWG NO. 128783-01-000	(X-X)	FOR ELECTRICAL CALLOUTS SEE DWG NO. 121339-01-000
TITLE: WIRING INSTL-BODY(30 CC USA) SHEET 5 OF 25 129776		



- 7 Wires to pass through hole in power chord compartment.
- 6 For this connection remove neutral wire marked blue from connections marked power cord.
- 5 For this connection remove neutral wire marked blue from connections marked panel.
- 4 Paint exposed surface black with 106112-01-000
3. ALL 110V STRANDED WIRE W/O TERMINALS TO BE STRIPPED 10MM AND SOLDER DIPPED.
2. GROUND WIRES NOT SHOWN FOR CLARITY.
1. ALL WIRES TO BE CLAMPED WITH IN 200 OF BOX.

- 78J ELECTRICAL SYSTEM - 50 AMP
- 265 CODES/STANDARDS-CSA/CMVSS
- 12D ELECTRICAL SYSTEM 30 AMP
- 181 CODES/STANDARDS USA

FOR ELECTRICAL TORQUE SPECIFICATIONS SEE DWG NO. 128783-01-000

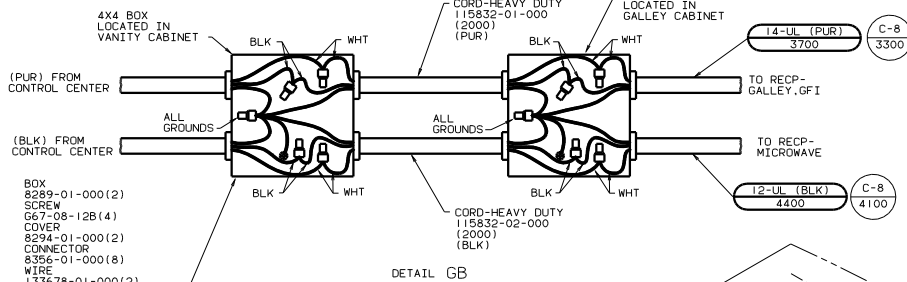
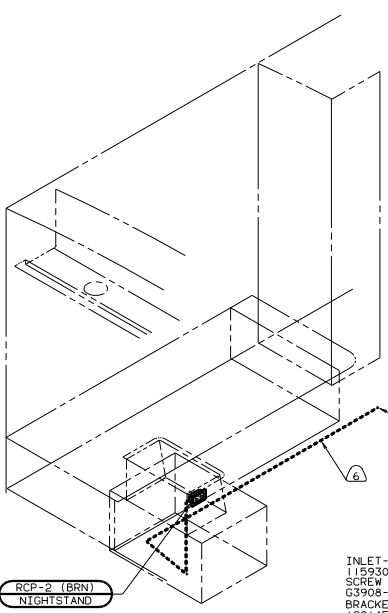
X-X

FOR ELECTRICAL CALLOUTS SEE DWG NO. 121339-01-000

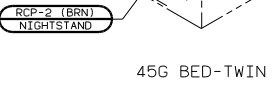
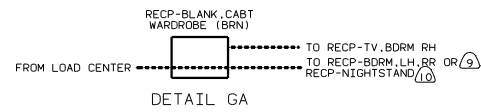
99 G & L33B 181 12D 78J

WIRING INSTL-BODY (ATS/DG)

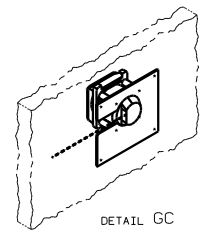
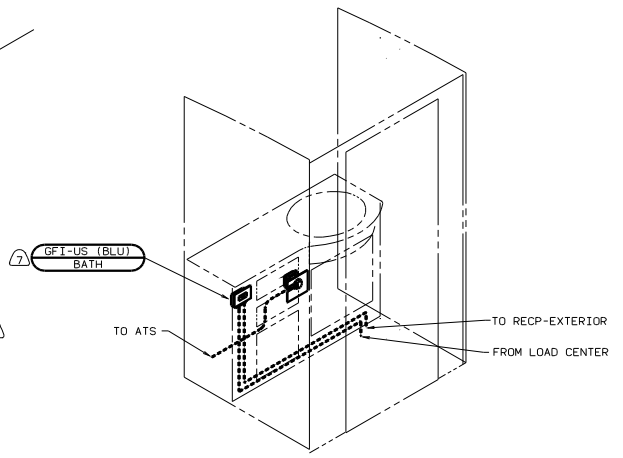
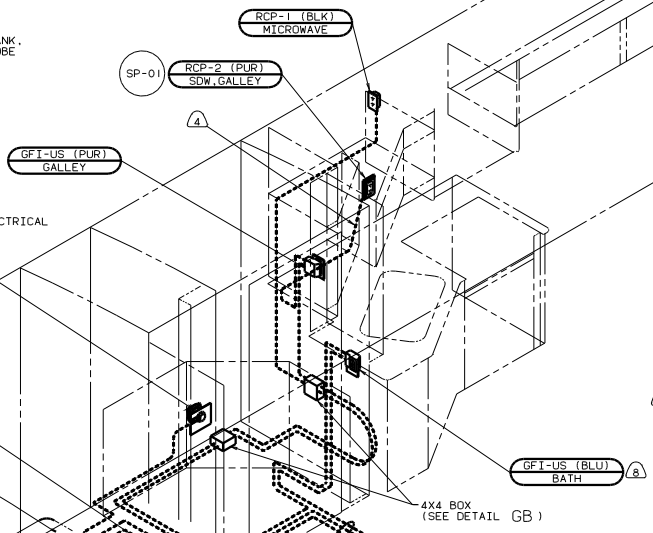
129776



- BOX 8289-01-000(2)
- SCREW G67-08-12B(4)
- COVER 8294-01-000(2)
- CONNECTOR 8356-01-000(8)
- WIRE 133678-01-000(2)
- CONNECTOR 8313-01-000(8)
- 8314-01-000(2)
- SCREW-GROUND\_GREEN 103291-01-000(2)



- INLET-30 AMP 115930-01-000
- SCREW G3908-40-170 (4)
- BRACKET ASM-INLET, ELECTRICAL 128145-01-CHT
- SCREW G67-10-08U (4)
- (SEE DETAIL GC)



- 10 45G BED-TWINS
- 9 49X BED-QUEEN, CENTERED
- 8 L-SERIES
- 7 G-SERIES
- 6 WIRE ROUTED BELOW FLOOR.
- 5 26L REAR STEREO SYSTEM.
- 4 ROUTE WIRE IN SIDEWALL DURING INSTALLATION.
- 3 WITHOUT 26K REAR STEREO SYSTEM.

- 2. ALL WIRES ARE TO BE CLAMPED WITH CLAMP 10495-05-000 WITHIN 200 OF OUTLET BOXES AND SPLICES. USE SCREW G67-10-12B.
- 1. ALL WIRE TO BE CLAMPED WITH CLAMP 10495-01-000 OR CLIP 80734-01-000 EVERY 700. USE SCREW G67-10-12B UNLESS OTHERWISE SPECIFIED.

49X BED-QUEEN, CENTERED

FOR ELECTRICAL TORQUE SPECIFICATIONS SEE DWG NO. 128783-01-000

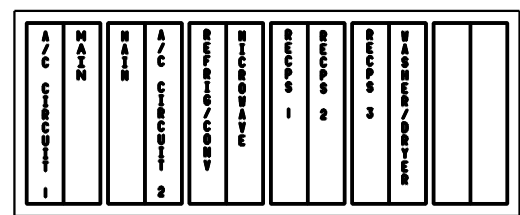
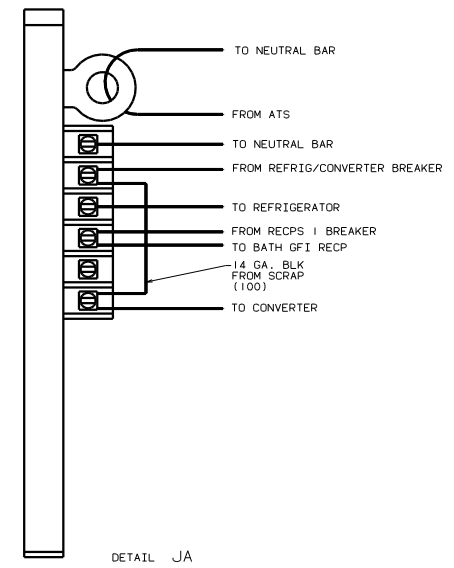
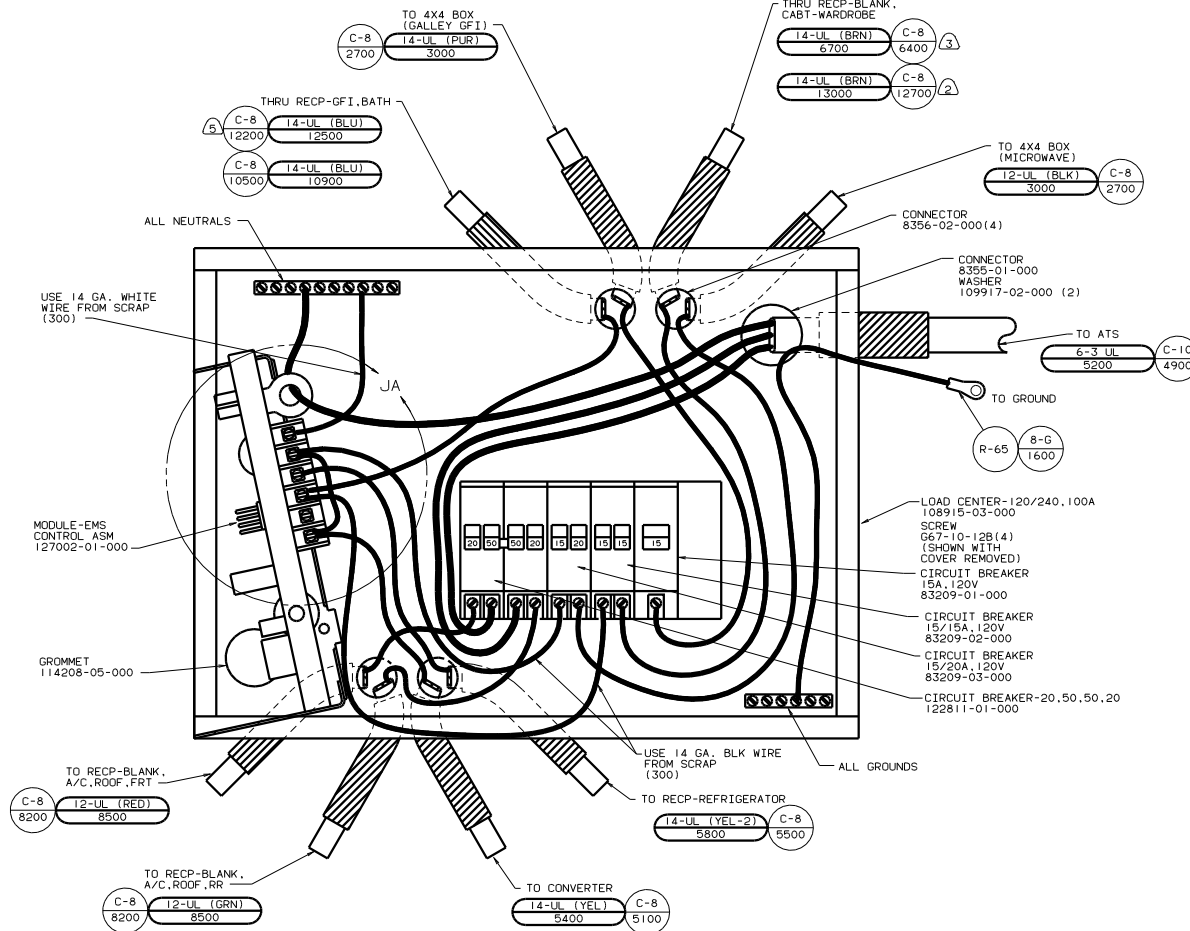
FOR ELECTRICAL CALLOUTS SEE DWG NO. 121339-01-000

99 G & L33B  
1B1 USA STANDARDS  
1E3 ENERGY MGMT SYSTEM  
78J POWER CORD-50 AMPS

TITLE: WIRING INSTL-BODY (110150USA)  
DWG NO. 129776  
SHEET 7 OF 25







INSTALL LABEL ON FRONT PANEL BELOW BREAKERS BETWEEN MOUNTING HOLES

LABEL 95721-29-000

- 76C EXTERIOR ENTERTAINMENT CENTER W/CASSETTE OR 105 EXTERIOR ENTERTAINMENT CENTER W/COMPACT DISC.
- WIRE MUST BE 700 LONG INSIDE BOX.
- 45G BED-TWINS.
- 49X BED-QUEEN, CENTERED.
1. ALL GROUND WIRES TO BE COVERED WITH TUBING 8041-02-000.

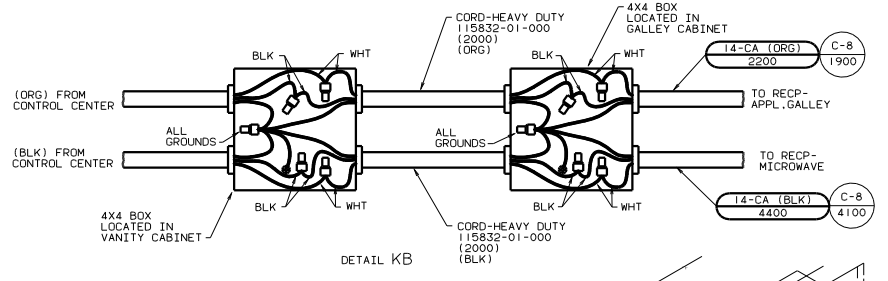
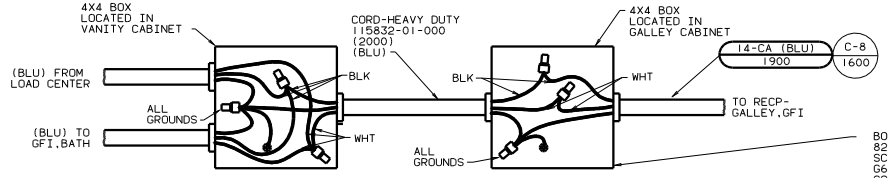
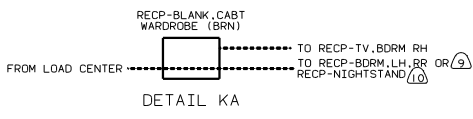
FOR ELECTRICAL TORQUE SPECIFICATIONS SEE DWG NO. 128783-01-000

(X-X)

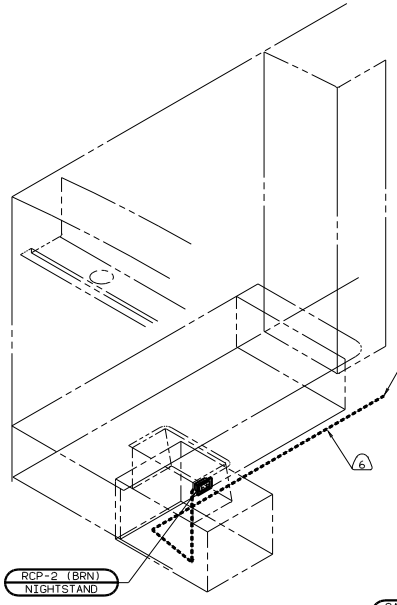
FOR ELECTRICAL CALLOUTS SEE DWG NO. 121339-01-000

99 G & L33B  
 IBI USA STANDARDS  
 LOAD CENTER  
 IE3 ENERGY MGMT SYSTEM  
 78J POWER CORD-50 AMPS

FILE NO.	129776
REV.	1
DATE	9/25/05
SHEET	9 OF 25
DWG NO.	129776

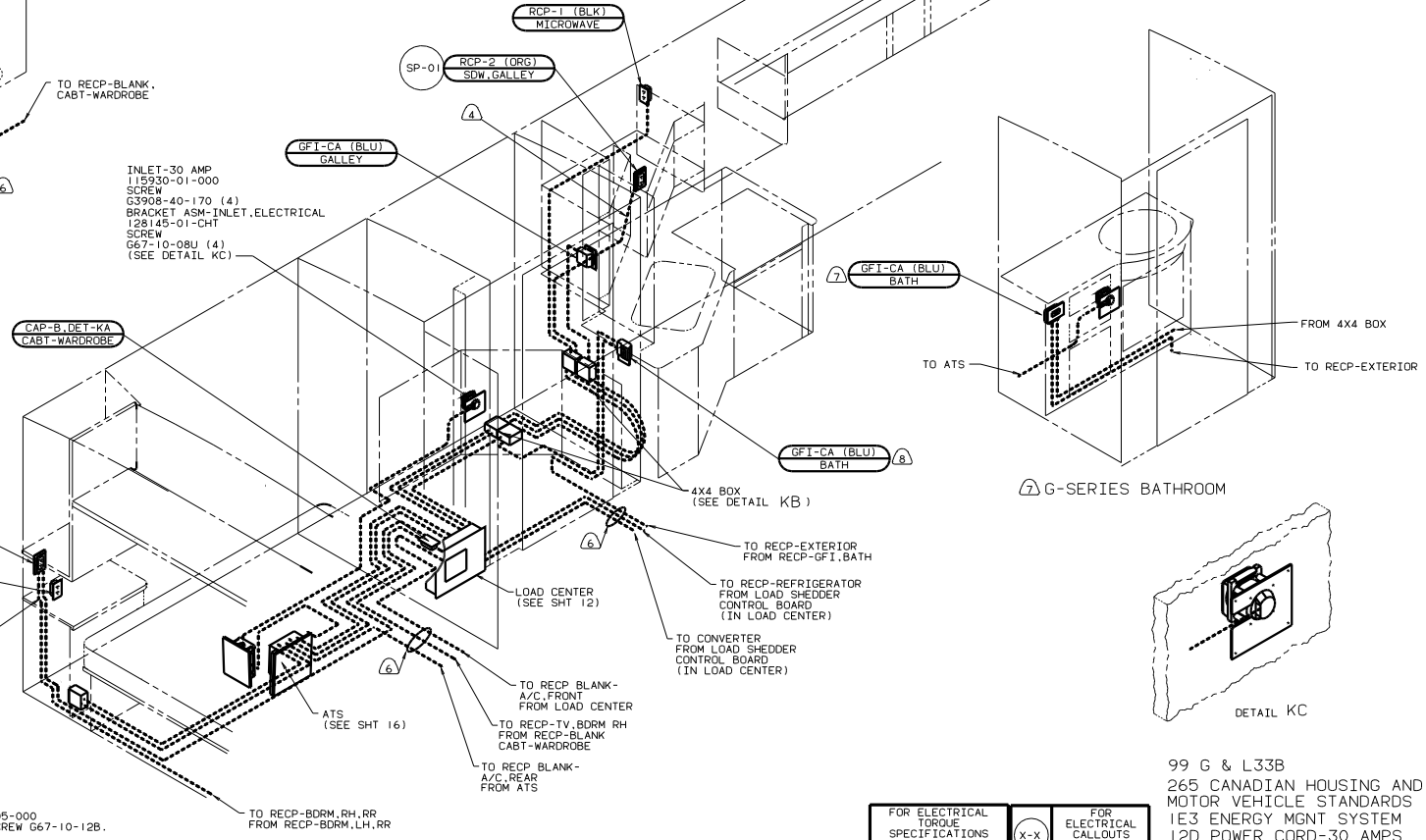


- BOX 8289-02-000(4)
- SCREW 667-08-12B(8)
- COVER 8294-02-000(4)
- CONNECTOR 8356-01-000(13)
- WIRE 133678-01-000(14)
- CONNECTOR 8313-01-000(10)
- 8314-01-000(6)
- SCREW-GROUND, GREEN 103291-01-000(4)

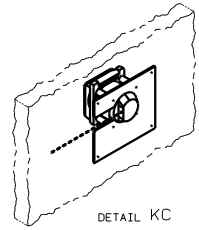


45G BED-TWIN

- INLET-30 AMP 115930-01-000
- SCREW G3908-40-170 (4)
- BRACKET ASM-INLET,ELECTRICAL 128145-01-CHT
- SCREW G67-10-08U (4) (SEE DETAIL KC)



G-SERIES BATHROOM



- (10) 45G BED-TWINS
- (9) 49X BED-QUEEN,CENTERED
- (8) L-SERIES
- (7) G-SERIES
- (6) WIRE ROUTED BELOW FLOOR.
- (5) 26L REAR STEREO SYSTEM.
- (4) ROUTE WIRE IN SIDEWALL DURING INSTALLATION.
- (3) WITHOUT 26K REAR STEREO SYSTEM.

- 2. ALL WIRES ARE TO BE CLAMPED WITH CLAMP 10497-05-000 WITHIN 200 OF OUTLET BOXES AND SPLICES. USE SCREW G67-10-12B.
- 1. ALL WIRE TO BE CLAMPED WITH CLAMP 10495-01-000 OR CLIP 80734-01-000 EVERY 700. USE SCREW G67-10-12B UNLESS OTHERWISE SPECIFIED.

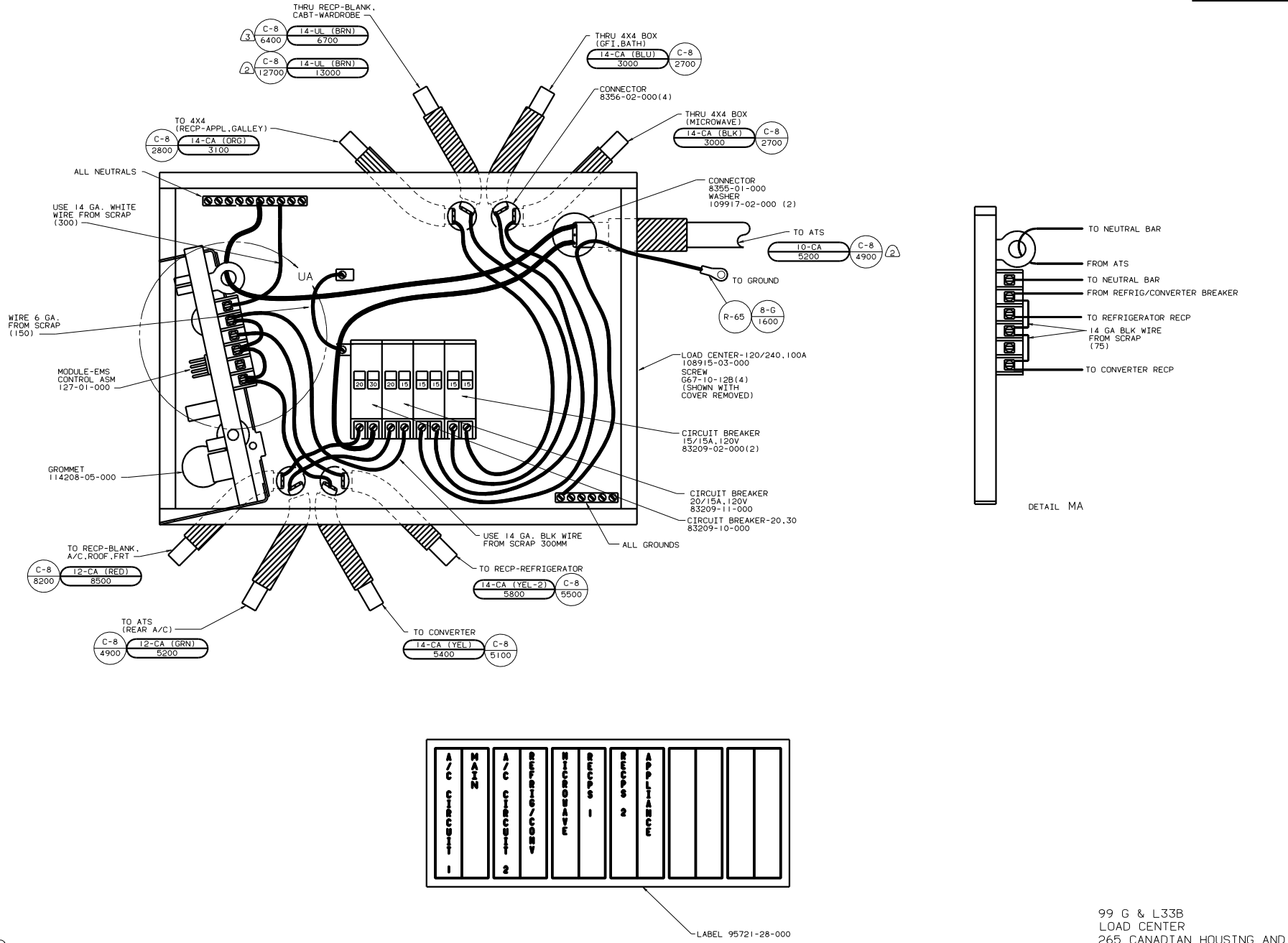
49X BED-QUEEN,CENTERED

FOR ELECTRICAL TORQUE SPECIFICATIONS SEE DWG NO. 128783-01-000	X-X	FOR ELECTRICAL CALLOUTS SEE DWG NO. 121339-01-000
----------------------------------------------------------------	-----	---------------------------------------------------

99 G & L33B  
265 CANADIAN HOUSING AND MOTOR VEHICLE STANDARDS  
1E3 ENERGY MGMT SYSTEM  
12D POWER CORD-30 AMPS

TITLE	WIRING INSTL-BODY(110130CSA)
NO. OF SHEETS	16
SHEET NO	10 OF 25
DWG NO	129776





4. WIRE MUST BE 700 LONG INSIDE BOX  
 3. 45G BED-TWINS.  
 2. 49X BED-QUEEN, CENTERED.  
 1. ALL GROUND WIRES TO BE COVERED WITH TUBING 8041-02-000.

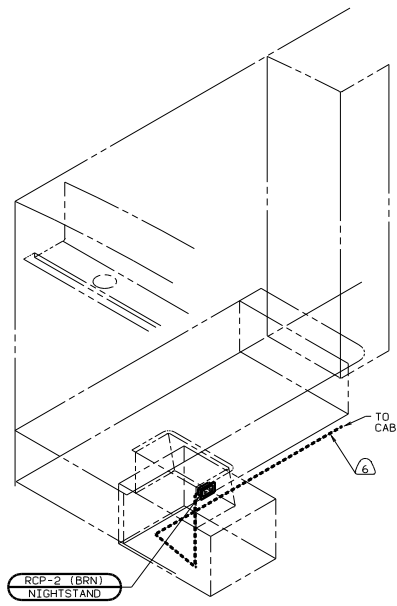
INSTALL LABEL ON FRONT PANEL BELOW BREAKERS BETWEEN MOUNTING HOLES

FOR ELECTRICAL TORQUE SPECIFICATIONS SEE DWG NO. 128783-01-000

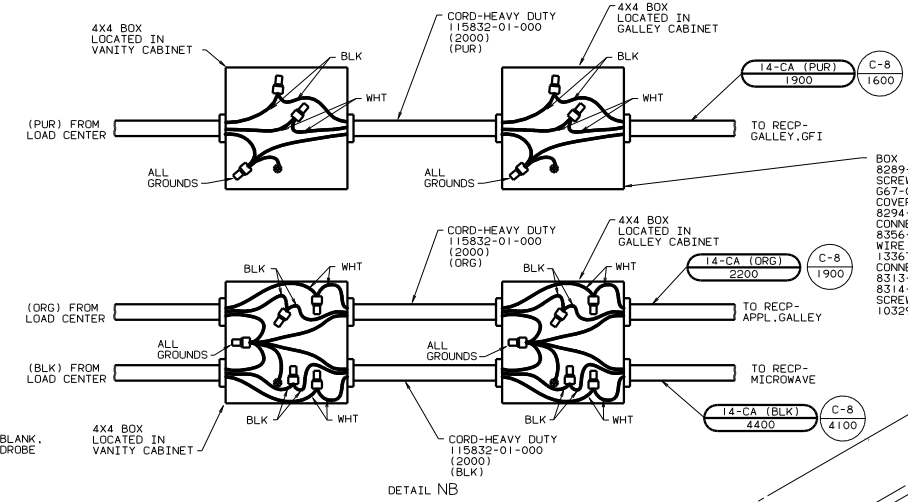
FOR ELECTRICAL CALLOUTS SEE DWG NO. 121339-01-000

99 G & L33B  
 LOAD CENTER  
 265 CANADIAN HOUSING AND MOTOR VEHICLE STANDARDS  
 IE3 ENERGY MGMT SYSTEM  
 12D POWER CORD-30 AMPS

TITLE: WIRING INSTL-BODY(30 CC CSA)  
 SHEET 12 OF 25

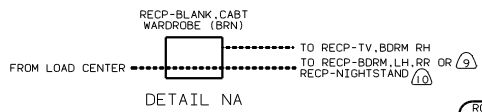


45G BED-TWIN



DETAIL NB

- BOX 9289-02-000(4)
- SCREW G67-08-12B(8)
- COVER 8294-02-000(4)
- CONNECTOR 8356-01-000(13)
- WIRE 133678-03-000(4)
- CONNECTOR 8313-01-000(12)
- 8314-01-000(4)
- SCREW-GROUND, GREEN 103291-01-000(4)



DETAIL NA

RCP-2 (BRN) NIGHTSTAND

RECP-BLANK CABT WARDROBE (BRN)

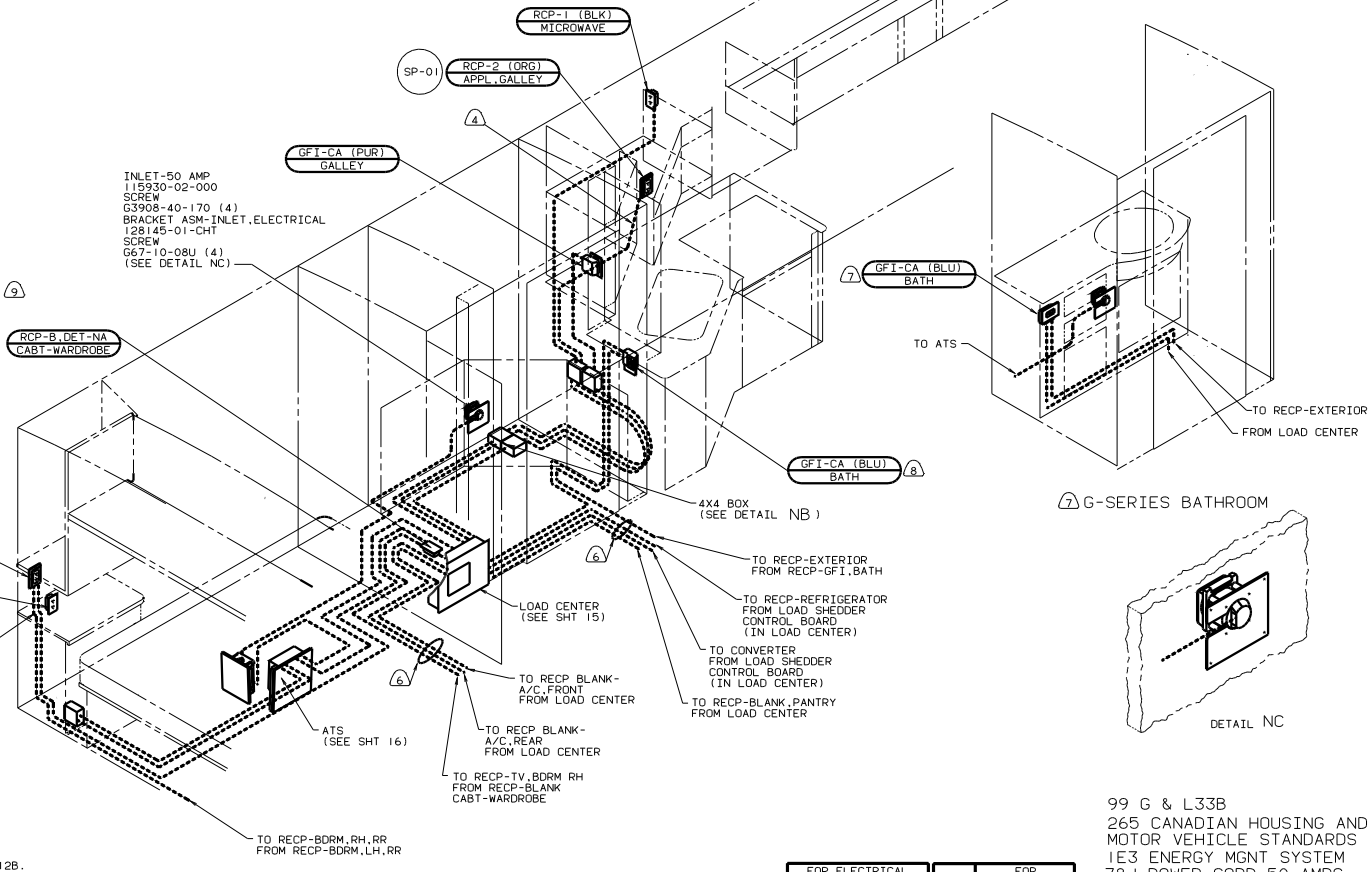
TO RECP-TV, BDRM RH  
TO RECP-BDRM, LH, RR OR  
RECP-NIGHTSTAND

- ⑩ 45G BED-TWIN
- ⑨ 49X BED-QUEEN, CENTERED
- ⑧ L-SERIES
- ⑦ G-SERIES
- ⑥ WIRE ROUTED BELOW FLOOR.
- ⑤ 26L REAR STEREO SYSTEM.
- ④ ROUTE WIRE IN SIDEWALL DURING INSTALLATION.
- ③ WITHOUT 26K REAR STEREO SYSTEM.

2. ALL WIRES ARE TO BE CLAMPED WITH CLAMP 10495-01-000 WITHIN 200 OF OUTLET BOXES AND SPLICES. USE SCREW G67-10-12B.

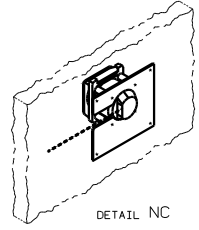
1. ALL WIRE TO BE CLAMPED WITH CLAMP 10495-01-000 OR CLIP 80734-01-000 EVERY 700. USE SCREW G67-10-12B UNLESS OTHERWISE SPECIFIED.

NOTES:



49X BED-QUEEN, CENTERED

⑦ G-SERIES BATHROOM



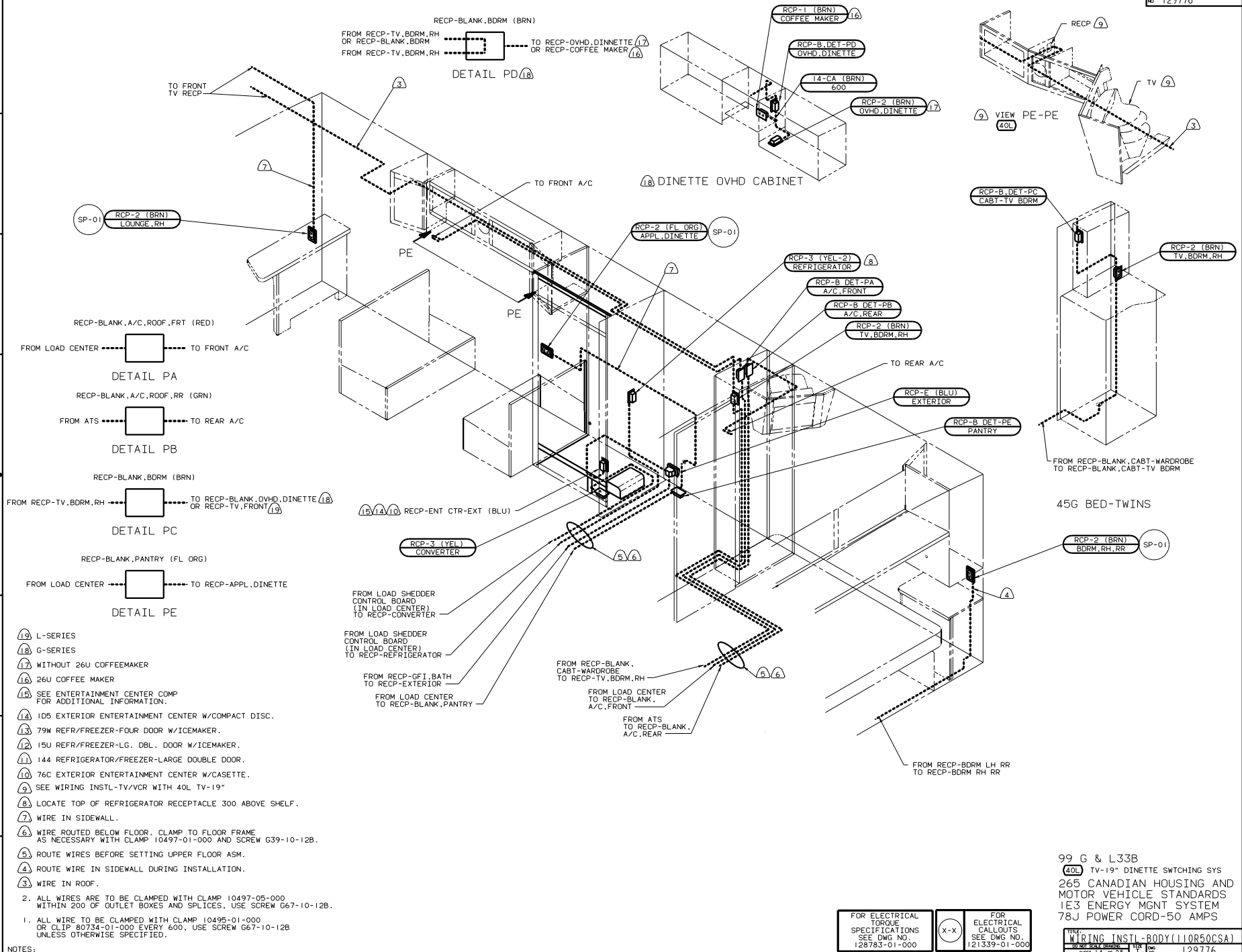
DETAIL NC

FOR ELECTRICAL TORQUE SPECIFICATIONS SEE DWG NO. 128783-01-000

FOR ELECTRICAL CALLOUTS SEE DWG NO. 121339-01-000

99 G & L33B  
265 CANADIAN HOUSING AND MOTOR VEHICLE STANDARDS  
1E3 ENERGY MGMT SYSTEM  
78J POWER CORD-50 AMPS

WIRING INSTL-BODY(110150CSA)  
sheet 13 of 25  
129776



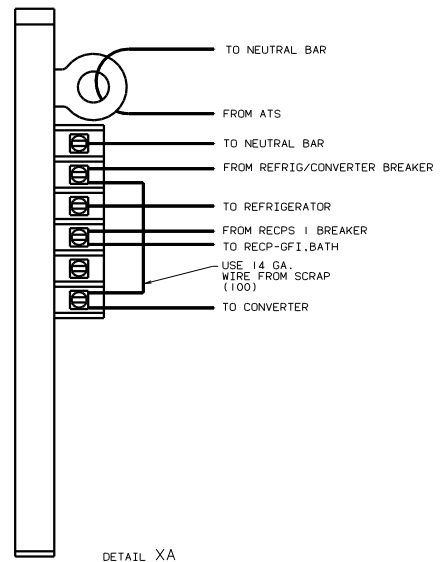
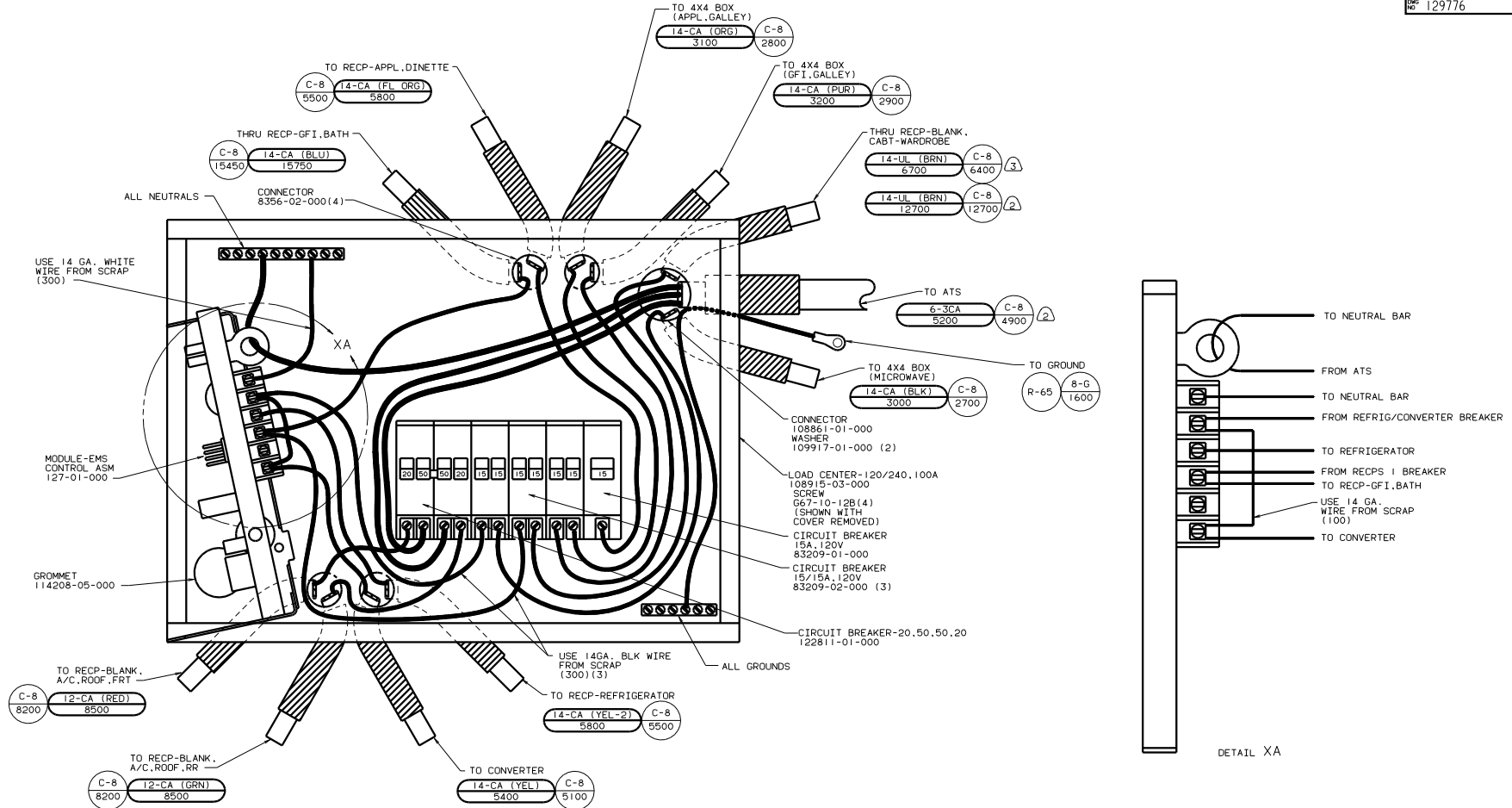
- ⑬ L-SERIES
  - ⑭ G-SERIES
  - ⑮ WITHOUT 26U COFFEEMAKER
  - ⑯ 26U COFFEE MAKER
  - ⑰ SEE ENTERTAINMENT CENTER COMP FOR ADDITIONAL INFORMATION.
  - ⑱ 105 EXTERIOR ENTERTAINMENT CENTER W/COMPACT DISC.
  - ⑲ 79W REFR/FREEZER-FOUR DOOR W/ICEMAKER.
  - ⑳ 15U REFR/FREEZER-LG. DBL. DOOR W/ICEMAKER.
  - ㉑ 144 REFRIGERATOR/FREEZER-LARGE DOUBLE DOOR.
  - ㉒ 76C EXTERIOR ENTERTAINMENT CENTER W/CASSETTE.
  - ㉓ SEE WIRING INSTL-TV/VCR WITH 40L TV-19"
  - ㉔ LOCATE TOP OF REFRIGERATOR RECEPTACLE 300 ABOVE SHELF.
  - ㉕ WIRE IN SIDEWALL.
  - ㉖ WIRE ROUTED BELOW FLOOR. CLAMP TO FLOOR FRAME AS NECESSARY WITH CLAMP 10497-01-000 AND SCREW G39-10-12B.
  - ㉗ ROUTE WIRES BEFORE SETTING UPPER FLOOR ASM.
  - ㉘ ROUTE WIRE IN SIDEWALL DURING INSTALLATION.
  - ㉙ WIRE IN ROOF.
2. ALL WIRES ARE TO BE CLAMPED WITH CLAMP 10497-05-000 WITHIN 200 OF OUTLET BOXES AND SPLICES. USE SCREW G67-10-12B.
1. ALL WIRE TO BE CLAMPED WITH CLAMP 10495-01-000 OR CLIP 80734-01-000 EVERY 600. USE SCREW G67-10-12B UNLESS OTHERWISE SPECIFIED.

NOTES:

FOR ELECTRICAL TORQUE SPECIFICATIONS SEE DWG NO. 128783-01-000	(X-X)	FOR ELECTRICAL CALLOUTS SEE DWG NO. 121339-01-000
----------------------------------------------------------------	-------	---------------------------------------------------

99 G & L33B  
 40L TV-19" DINETTE SWITCHING SYS  
 265 CANADIAN HOUSING AND MOTOR VEHICLE STANDARDS  
 IE3 ENERGY MGMT SYSTEM  
 78J POWER CORD-50 AMPS

TRIPLE WIRING INSTL-BODY(110850CSA)	1 of 1
2010 SCALE CHG	1 of 1
SHEET 14 OF 25	129776



A/C CIRCUIT 1	MAIN	MAIN	A/C CIRCUIT 2	REFRIG/CONV	MICROWAVE	RECPS 1	RECPS 2	RECPS 3	APPL 1	APPL 2	WASHER/DRYER
---------------	------	------	---------------	-------------	-----------	---------	---------	---------	--------	--------	--------------

LABEL 95721-30-000

INSTALL LABEL ON FRONT PANEL BELOW BREAKERS BETWEEN MOUNTING HOLES

- NOTES:
- ④ WIRE MUST BE 700 LONG INSIDE BOX.
  - ③ 45G BED-TWINS.
  - ② 49X BED-QUEEN, CENTERED.
1. ALL GROUND WIRES TO BE COVERED WITH TUBING 8041-02-000.

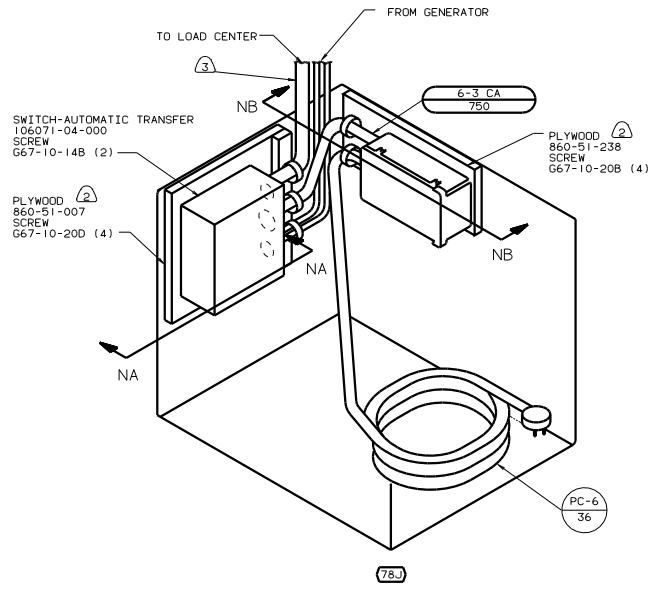
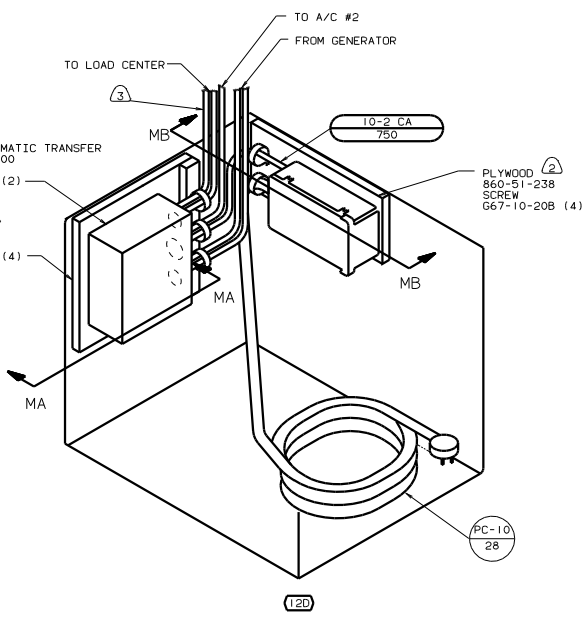
FOR ELECTRICAL TORQUE SPECIFICATIONS SEE DWG NO. 128783-01-000

(X-X) FOR ELECTRICAL CALLOUTS SEE DWG NO. 121339-01-000

99 G & L33B  
LOAD CENTER  
IE3 ENERGY MGMT SYSTEM  
265 CANADIAN HOUSING AND  
MOTOR VEHICLE STANDARDS  
78J POWER CORD-50 AMPS

TITLE: WIRING INSTL-BODY(50 CC CSA)  
DWG NO: 121339-01-000  
SHEET 15 OF 25  
DATE: 129776





(3) WIRES TO PASS THROUGH HOLE IN POWER CORD COMPARTMENT.

(2) PAINT EXPOSED SURFACES BLACK WITH 106112-01-000

1. ALL WIRES TO BE CLAMPED WITHIN 200 OF BOX

NOTES:

(12D) ELECTRICAL SYSTEM 30 AMP

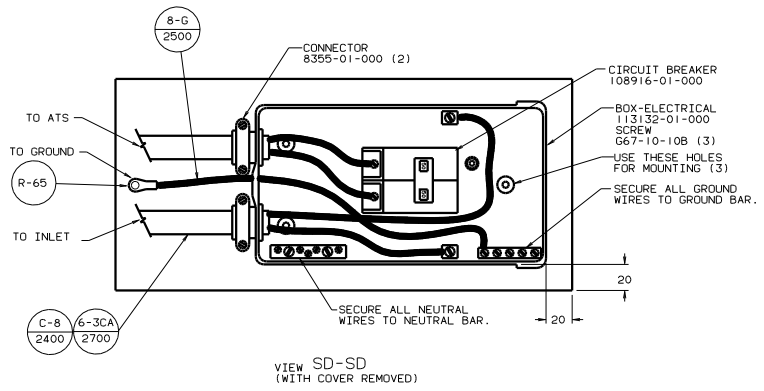
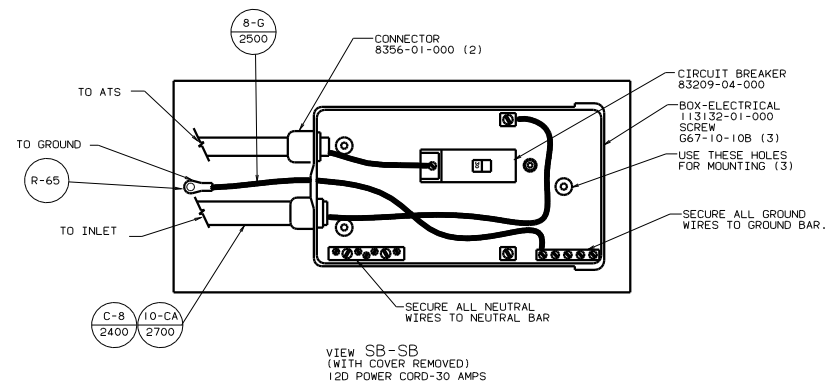
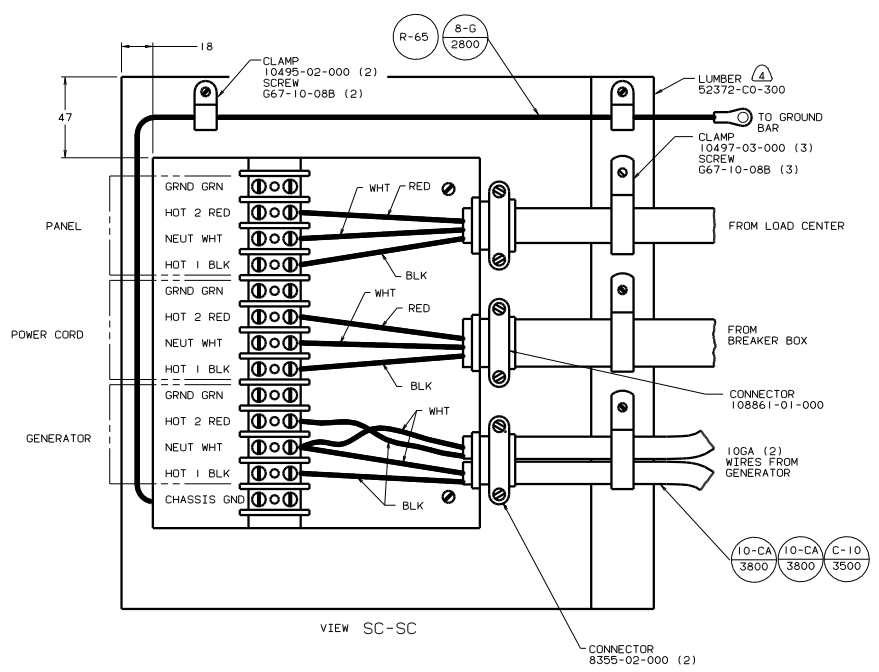
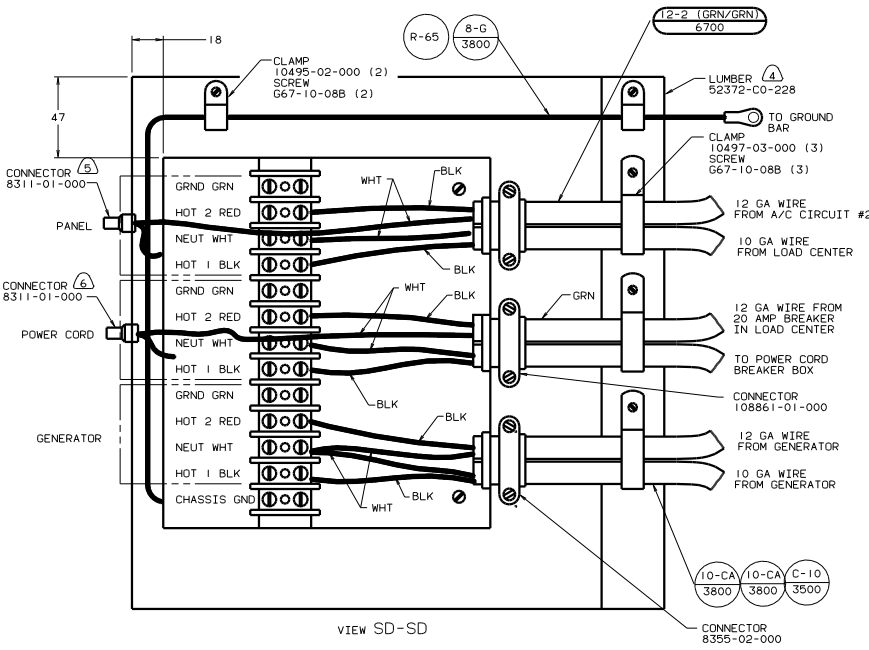
(78J) ELECTRICAL SYSTEM-50 AMP

(265) CODES/STANDARDS-CSA/CMVSS

99 G & L33B (265) (78J) (12D)

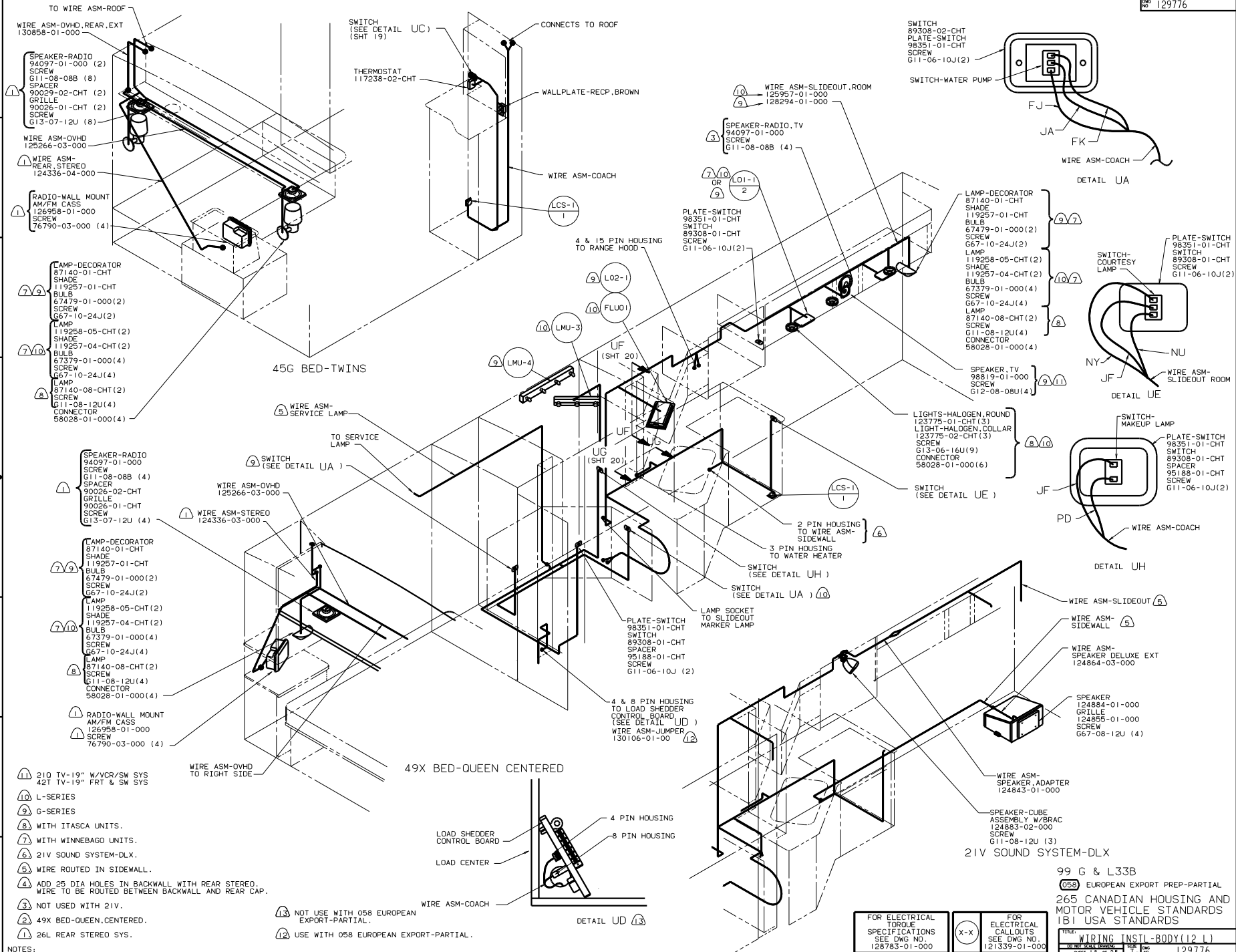
FOR ELECTRICAL CALLOUTS SEE DWG NO. 121339-01-000

WIRING INSTL - BODY (A/CAN) SHEET 16 OF 25 129776



- (7) WIRES TO PASS THROUGH HOLE IN POWER CHORD COMPARTMENT.
- (6) FOR THIS CONNECTION REMOVE NEUTRAL WIRE MARKED BLUE FROM CONNECTIONS MARKED POWER CORD.
- (5) FOR THIS CONNECTION REMOVE NEUTRAL WIRE MARKED BLUE FROM CONNECTIONS MARKED PANEL.
- (4) PAINT EXPOSED SURFACE BLACK WITH 106112-01-000
3. ALL 110V STRANDED WIRE W/O TERMINALS TO BE STRIPPED 10MM AND SOLDER DIPPED.
2. GROUND WIRES NOT SHOWN FOR CLARITY.
1. ALL WIRES TO BE CLAMPED WITH IN 200 OF BOX.
- NOTES:
- (12D) ELECTRICAL SYSTEM 30 AMP

- (78) ELECTRICAL SYSTEM - 50 AMP
- (401) GEN-5.0KW-ONAN-GAS-EMERALD
- (39M) GEN-7.0KW ONAN-GAS-MAROUIS
- (265) CODES/STANDARDS-CSA/CMVSS
- 99 G & L33B (265)



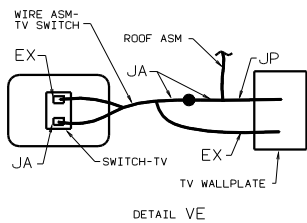
- ① 210 TV-19" W/VCR/SW SYS  
42T TV-19" FRT & SW SYS
- ⑩ L-SERIES
- ⑨ G-SERIES
- ⑧ WITH ITASCA UNITS.
- ⑦ WITH WINNEBAGO UNITS.
- ⑥ 21V SOUND SYSTEM-DLX.
- ⑤ WIRE ROUTED IN SIDEWALL.
- ④ ADD 25 DIA HOLES IN BACKWALL WITH REAR STEREO.  
WIRE TO BE ROUTED BETWEEN BACKWALL AND REAR CAP.
- ③ NOT USED WITH 21V.
- ② 49X BED-QUEEN, CENTERED.
- ① 26L REAR STEREO SYS.

- ⑬ NOT USE WITH 058 EUROPEAN EXPORT-PARTIAL.
- ⑫ USE WITH 058 EUROPEAN EXPORT-PARTIAL.

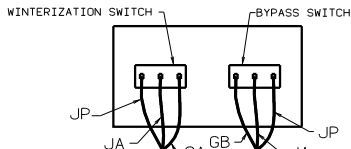
FOR ELECTRICAL TORQUE SPECIFICATIONS SEE DWG NO. 128783-01-000	X-X	FOR ELECTRICAL CALLOUTS SEE DWG NO. 121339-01-000
----------------------------------------------------------------	-----	---------------------------------------------------

99 G & L33B  
 (058) EUROPEAN EXPORT PREP-PARTIAL  
 265 CANADIAN HOUSING AND MOTOR VEHICLE STANDARDS  
 1B1 USA STANDARDS

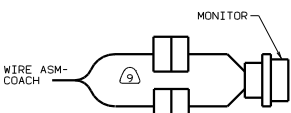
TITLE	WIRING INSTL-BODY(12 L)
NO. OF SHEETS	18 OF 25
DWG NO.	129776



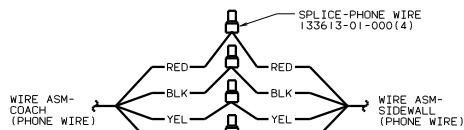
DETAIL VE



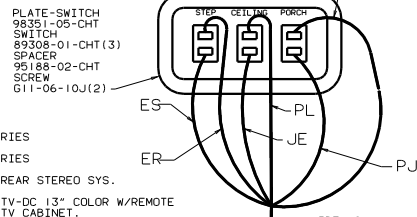
DETAIL VJ  
530 WINTERIZING KIT



DETAIL VF (SHT 19)  
290 SOLAR PANEL



DETAIL VG



DETAIL VA

- (16) L-SERIES
- (15) G-SERIES
- (14) 26L REAR STEREO SYS.
- (13) 10W TV-DC 13" COLOR W/REMOTE AND TV CABINET.
- (12) 49X BED-QUEEN, CENTERED.
- (11) WITH ITASCA UNITS.
- (10) WITH WINNEBAGO UNITS.
- (9) 290 SOLAR PANEL.
- (8) 105 EXTERIOR ENTERTAINMENT CENTER W/COMPACT DISC.
- (7) NOT USED WITH 21V SOUND SYSTEM DELUXE
- (6) WIRE IN ROOF.
- (5) WIRE IN SIDEWALL.
- (4) 530 WINTERIZING KIT.
- (3) MOUNT SWITCH AND SPACER TO BLOCK ON JAMB. ADJUST HEIGHT TO MATCH MAGNET.
- (2) MOUNT MAGNET USING PILOT HOLES IN SCREEN DOOR FRAME. MOUNT WITH MAGNET TOWARD SWITCH.
- (1) 76C EXTERIOR ENTERTAINMENT CENTER W/CASSETTE.

- (10/15) LAMP-DECORATOR 87140-01-CHT SHADE 119257-01-CHT BULB 67479-01-000(2) SCREW G67-10-24J(2)
- (10/16) LAMP 119258-05-CHT(2) SHADE 119257-04-CHT(2) BULB 67379-01-000(4) SCREW G67-10-24J(4)
- (11) LAMP 87140-08-CHT(2) SHADE 119257-04-CHT(2) SCREW G11-08-12U(4) CONNECTOR 58028-01-000(4)

- (11) PLATE-WALL TELEPHONE 93253-01-CHT (SEE DETAIL VH) (SHT 22)
- (11) SWITCH (SEE DETAIL VA)

- (17) THERMOSTAT 117238-01-CHT
- (18) THERMOSTAT 130671-04-CHT SCREW G13-07-12B(2) (SEE DETAIL VK)
- (19) THERMOSTAT 130671-04-CHT SCREW G13-07-12B(2) (SEE DETAIL VK)

- (16) MONITOR-SOLAR CHARGER 115505-01-000 (SEE DETAIL VF)
- (16) 12V CIRCUIT BREAKERS (SEE SHT 20)

- (17) THERMOSTAT 117238-01-CHT
- (18) THERMOSTAT 130671-04-CHT SCREW G13-07-12B(2) (SEE DETAIL VK)
- (19) THERMOSTAT 130671-04-CHT SCREW G13-07-12B(2) (SEE DETAIL VK)

- (17) THERMOSTAT 117238-01-CHT
- (18) THERMOSTAT 130671-04-CHT SCREW G13-07-12B(2) (SEE DETAIL VK)
- (19) THERMOSTAT 130671-04-CHT SCREW G13-07-12B(2) (SEE DETAIL VK)

- (17) THERMOSTAT 117238-01-CHT
- (18) THERMOSTAT 130671-04-CHT SCREW G13-07-12B(2) (SEE DETAIL VK)
- (19) THERMOSTAT 130671-04-CHT SCREW G13-07-12B(2) (SEE DETAIL VK)

- (17) THERMOSTAT 117238-01-CHT
- (18) THERMOSTAT 130671-04-CHT SCREW G13-07-12B(2) (SEE DETAIL VK)
- (19) THERMOSTAT 130671-04-CHT SCREW G13-07-12B(2) (SEE DETAIL VK)

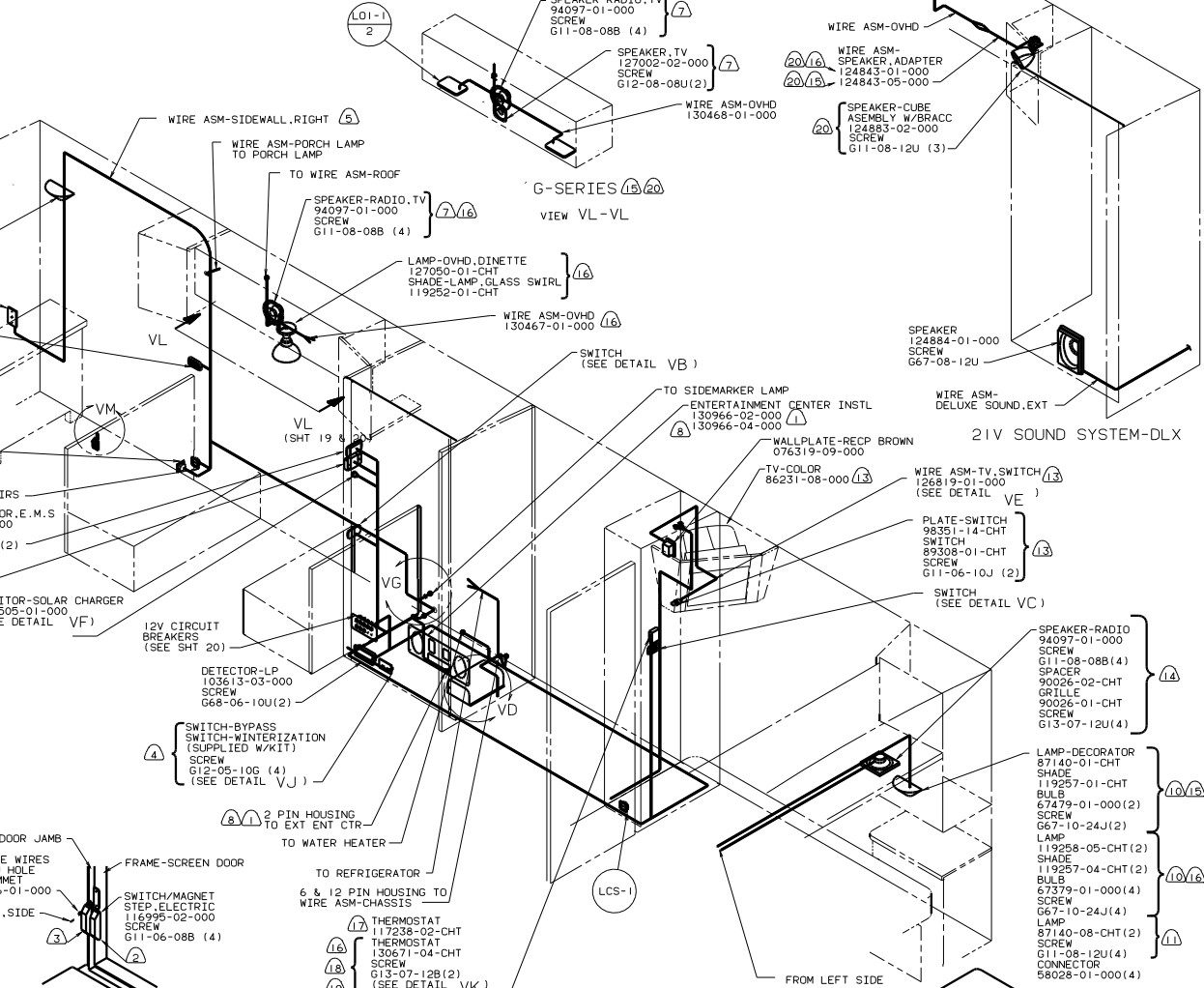
- (17) THERMOSTAT 117238-01-CHT
- (18) THERMOSTAT 130671-04-CHT SCREW G13-07-12B(2) (SEE DETAIL VK)
- (19) THERMOSTAT 130671-04-CHT SCREW G13-07-12B(2) (SEE DETAIL VK)

- (17) THERMOSTAT 117238-01-CHT
- (18) THERMOSTAT 130671-04-CHT SCREW G13-07-12B(2) (SEE DETAIL VK)
- (19) THERMOSTAT 130671-04-CHT SCREW G13-07-12B(2) (SEE DETAIL VK)

- (17) THERMOSTAT 117238-01-CHT
- (18) THERMOSTAT 130671-04-CHT SCREW G13-07-12B(2) (SEE DETAIL VK)
- (19) THERMOSTAT 130671-04-CHT SCREW G13-07-12B(2) (SEE DETAIL VK)

- (17) THERMOSTAT 117238-01-CHT
- (18) THERMOSTAT 130671-04-CHT SCREW G13-07-12B(2) (SEE DETAIL VK)
- (19) THERMOSTAT 130671-04-CHT SCREW G13-07-12B(2) (SEE DETAIL VK)

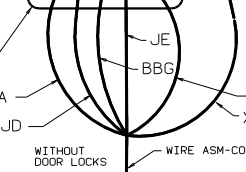
- (17) THERMOSTAT 117238-01-CHT
- (18) THERMOSTAT 130671-04-CHT SCREW G13-07-12B(2) (SEE DETAIL VK)
- (19) THERMOSTAT 130671-04-CHT SCREW G13-07-12B(2) (SEE DETAIL VK)



49X BED-QUEEN CENTERED



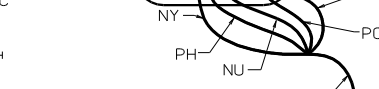
DETAIL VM IE2



DETAIL VB



DETAIL VC



DETAIL VC

- STUD-ISOLATED 86233-01-000 NUT D34-06-00B SCREW G67-08-12B(2) SPACER 77479-02-000

- (17) THERMOSTAT 117238-02-CHT
- (18) THERMOSTAT 130671-04-CHT SCREW G13-07-12B(2) (SEE DETAIL VK)
- (19) THERMOSTAT 130671-04-CHT SCREW G13-07-12B(2) (SEE DETAIL VK)

- (17) THERMOSTAT 117238-02-CHT
- (18) THERMOSTAT 130671-04-CHT SCREW G13-07-12B(2) (SEE DETAIL VK)
- (19) THERMOSTAT 130671-04-CHT SCREW G13-07-12B(2) (SEE DETAIL VK)

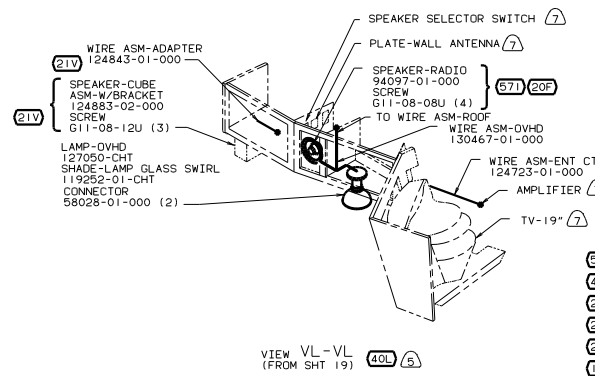
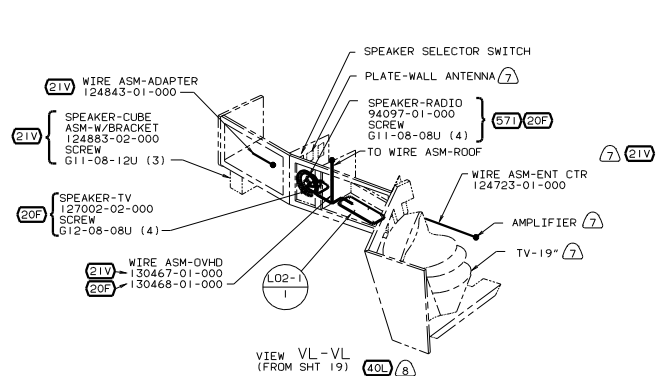
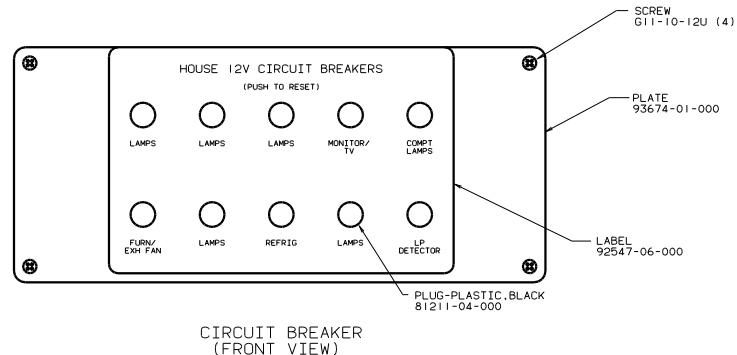
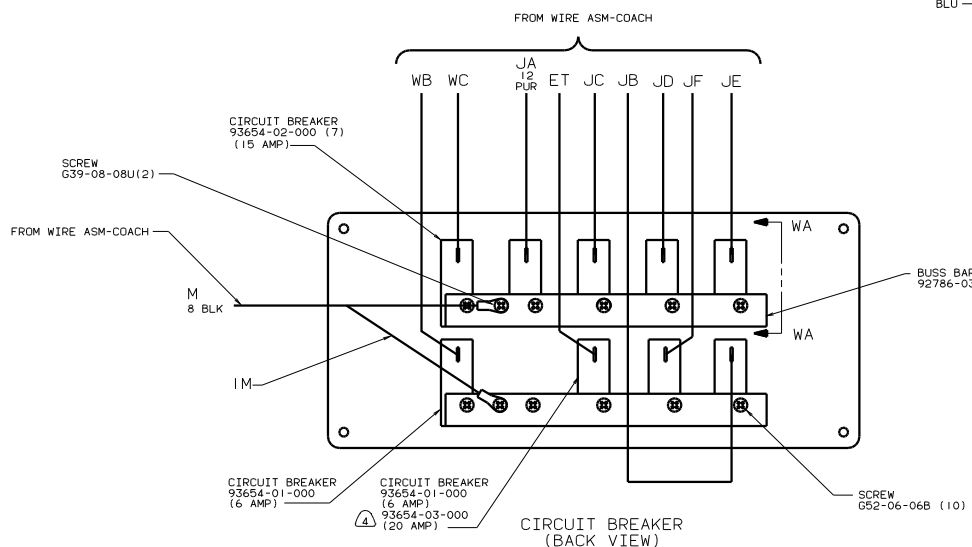
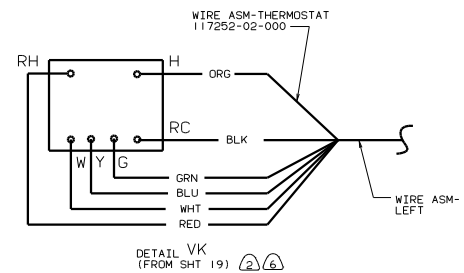
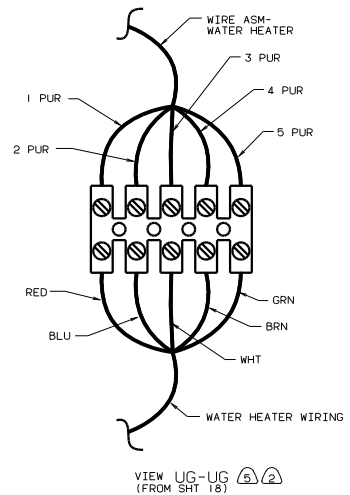
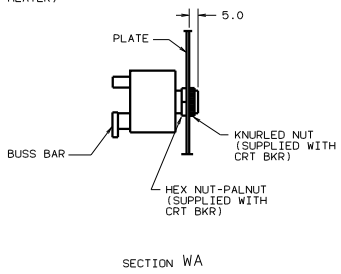
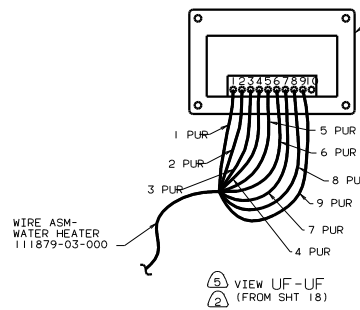
- (17) THERMOSTAT 117238-02-CHT
- (18) THERMOSTAT 130671-04-CHT SCREW G13-07-12B(2) (SEE DETAIL VK)
- (19) THERMOSTAT 130671-04-CHT SCREW G13-07-12B(2) (SEE DETAIL VK)



DETAIL VD 99 G & L33B

- (1E2) ENTRANCE STEP-ELEC.
- (40L) TV-19" MID-COACH W/VIDEO SEL
- (26S) CODES/STANDARDS-CSA/CMVSS
- (20F) DELUXE SOUND SYSTEM-WITHOUT A/C ROOF/EXPORT-TWO
- (1E1) CODES/STANDARDS USA
- (05B) EUROPEAN EXPORT PREP-PARTIAL

FOR ELECTRICAL TORQUE SPECIFICATIONS SEE DWG NO. 128783-01-000	X-X	FOR ELECTRICAL CALLOUTS SEE DWG NO. 121339-01-000
----------------------------------------------------------------	-----	---------------------------------------------------



- (8) G-SERIES.  
(7) SEE WIRING INSTL-TV/VCR W/40L.  
(6) USE WITH (1E6)  
(5) L-SERIES.  
(4) USE WITH (1E7) AND (05B)  
(3) NOT USED WITH (05B)  
(2) USE WITH (05B)  
(1) 290 SOLAR PANEL.

FOR ELECTRICAL  
TORQUE  
SPECIFICATIONS  
SEE DWG NO.  
128763-01-000

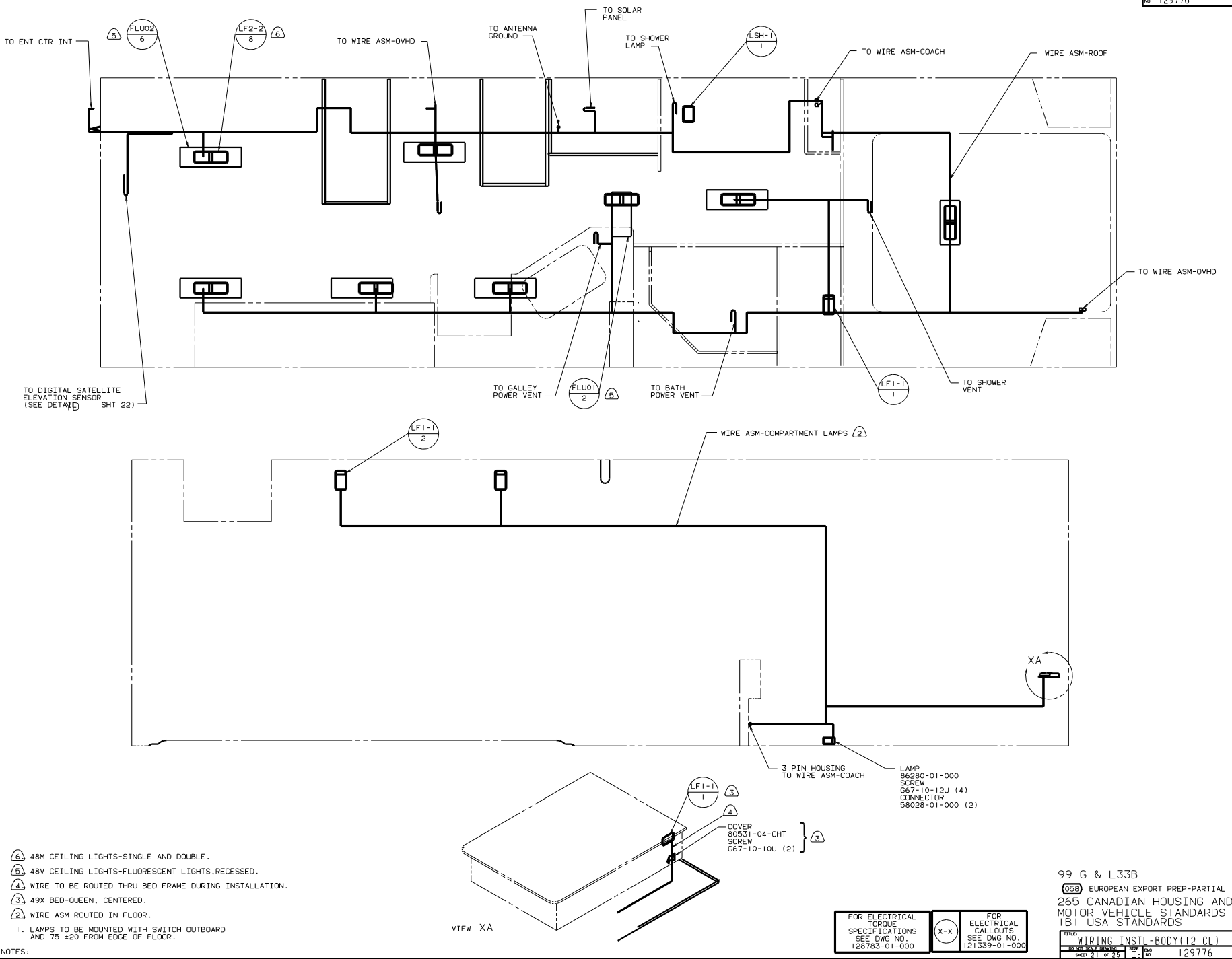
(X-X)

FOR  
ELECTRICAL  
CALLOUTS  
SEE DWG NO.  
121339-01-000

99 G & L33B

(57)	RADIO SPEAKERS
(40L)	TV-19" MID-COACH W/VIDEO SEL
(26S)	CODES/STANDARDS-CSA/CMVSS
(21V)	SOUND SYSTEM DELUXE
(20F)	DELUXE SOUND SYSTEM-WITHOUT
(1E7)	REFRIGERATOR-3-WAY. 220VAC
(1E6)	A/C ROOF/EXPORT-TWO
(1B)	CODES/STANDARDS USA
(05B)	EUROPEAN EXPORT PREP-PARTIAL

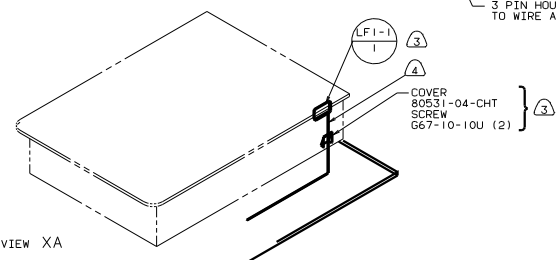
FILE: WIRING INSTL-BODY(12 BP)  
NO. IN SCALE: 20/25  
SHEET 20 OF 25  
129776



TO DIGITAL SATELLITE ELEVATION SENSOR (SEE DETAIL SHT 22)

- ⑥ 48M CEILING LIGHTS-SINGLE AND DOUBLE.
- ⑤ 48V CEILING LIGHTS-FLUORESCENT LIGHTS, RECESSED.
- ④ WIRE TO BE ROUTED THRU BED FRAME DURING INSTALLATION.
- ③ 49X BED-QUEEN, CENTERED.
- ② WIRE ASM ROUTED IN FLOOR.

1. LAMPS TO BE MOUNTED WITH SWITCH OUTBOARD AND 75 ±20 FROM EDGE OF FLOOR.



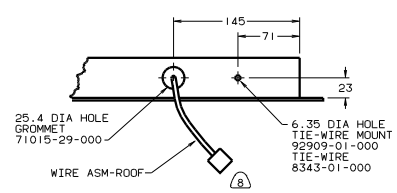
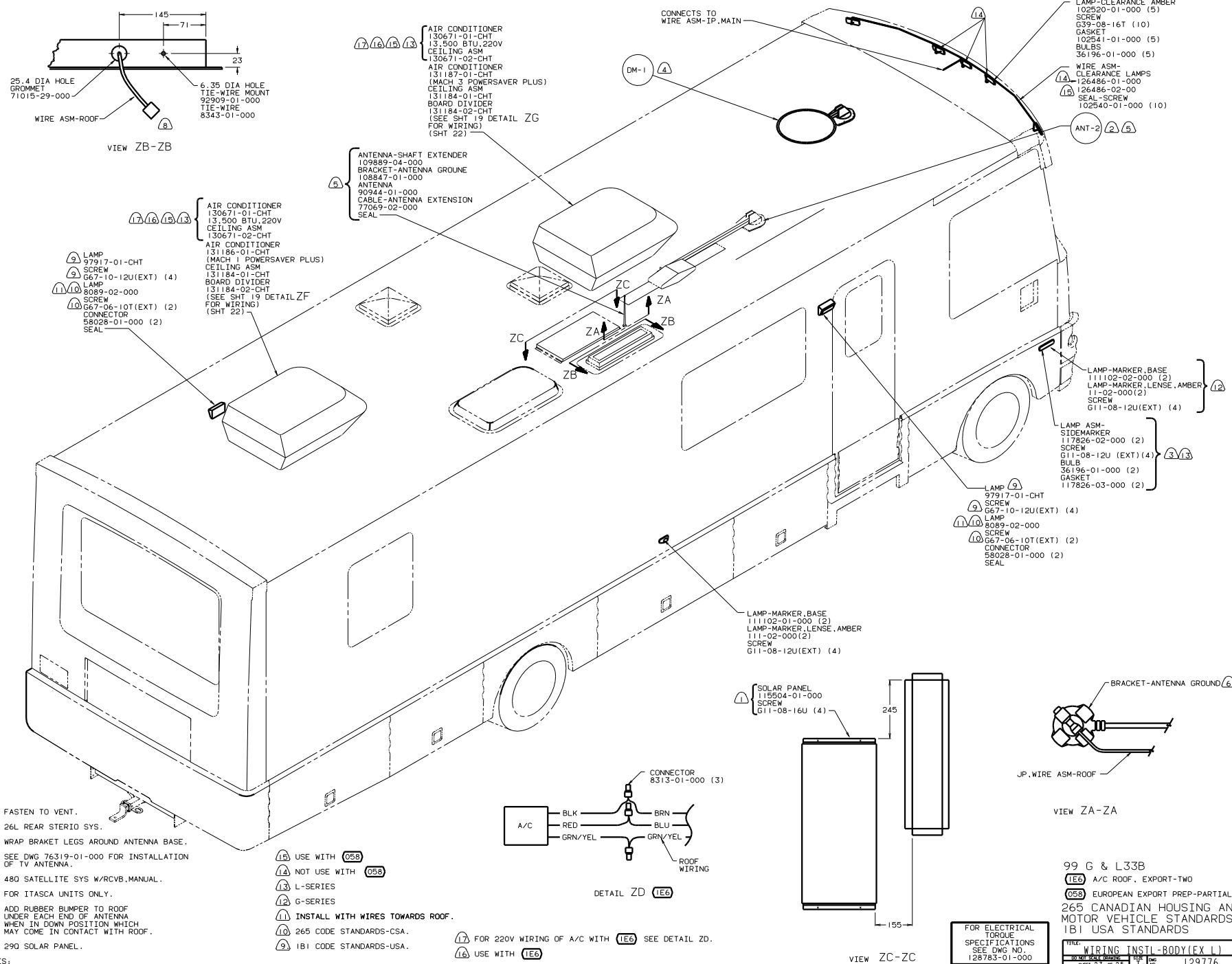
VIEW XA

FOR ELECTRICAL TORQUE SPECIFICATIONS SEE DWG NO. 128783-01-000	(X-X)	FOR ELECTRICAL CALLOUTS SEE DWG NO. 121339-01-000
----------------------------------------------------------------	-------	---------------------------------------------------

99 G & L33B  
 (058) EUROPEAN EXPORT PREP-PARTIAL  
 265 CANADIAN HOUSING AND MOTOR VEHICLE STANDARDS  
 1B1 USA STANDARDS

TITLE	129776
WIRING INSTL-BODY (12 CL)	
SHEET 21 OF 25	129776





- (17) AIR CONDITIONER 130671-01-CHT 13,500 BTU,220V CEILING ASM
- (18) AIR CONDITIONER 131187-01-CHT (MACH 3 POWERSAVER PLUS) CEILING ASM
- (19) AIR CONDITIONER 130671-02-CHT 131184-01-CHT BOARD DIVIDER 131184-02-CHT (SEE SHT 19 DETAIL ZG FOR WIRING) (SHT 22)

- (5) ANTENNA-SHAFT EXTENDER 109889-04-000 BRACKET-ANTENNA GROUNDE 108847-01-000 ANTENNA 90944-01-000 CABLE-ANTENNA EXTENSION 77069-02-000 SEAL

- (17) AIR CONDITIONER 130671-01-CHT 13,500 BTU,220V CEILING ASM
- (18) AIR CONDITIONER 131186-01-CHT (MACH 1 POWERSAVER PLUS) CEILING ASM
- (19) AIR CONDITIONER 131184-01-CHT BOARD DIVIDER 131184-02-CHT (SEE SHT 19 DETAIL ZF FOR WIRING) (SHT 22)

- (9) LAMP 97917-01-CHT
- (7) SCREW 067-10-12U(EXT) (4)
- (11) LAMP 8089-02-000
- (10) SCREW 067-06-10T(EXT) (2)
- (12) CONNECTOR 59028-01-000 (2)
- (13) SEAL

CONNECTS TO WIRE ASM-IP-MAIN

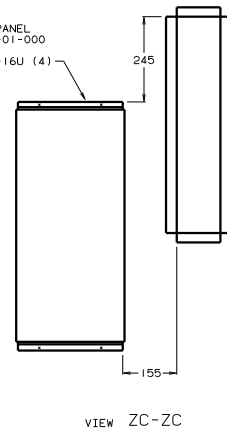
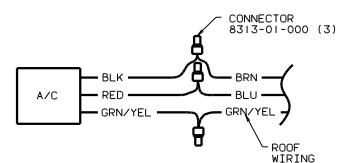
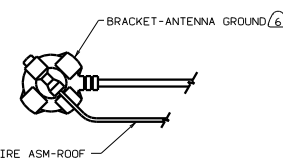
- (14) LAMP-CLEARANCE AMBER 102520-01-000 (5)
- (15) SCREW G39-08-16T (10)
- (16) GASKET 102541-01-000 (5)
- (17) BULBS 36196-01-000 (5)
- (18) WIRE ASM-CLEARANCE LAMPS 126486-01-000
- (19) SEAL-SCREW 102540-01-000 (10)

- (12) LAMP-MARKER, BASE 111102-02-000 (2)
- (13) LAMP-MARKER, LENSE, AMBER 11-02-000(2)
- (14) SCREW 111-08-12U(EXT) (4)
- (15) LAMP ASM-SIDEMARKER 117826-02-000 (2)
- (16) SCREW 611-08-12U (EXT) (4)
- (17) BULB 36196-01-000 (2)
- (18) GASKET 117826-03-000 (2)

- (9) LAMP 97917-01-CHT
- (7) SCREW 067-10-12U(EXT) (4)
- (11) LAMP 8089-02-000
- (10) SCREW 067-06-10T(EXT) (2)
- (12) CONNECTOR 59028-01-000 (2)
- (13) SEAL

- (12) LAMP-MARKER, BASE 111102-01-000 (2)
- (13) LAMP-MARKER, LENSE, AMBER 111-02-000(2)
- (14) SCREW 611-08-12U(EXT) (4)

- (17) SOLAR PANEL 115504-01-000
- (18) SCREW G11-08-16U (4)



- (8) FASTEN TO VENT.
- (7) 26L REAR STEREO SYS.
- (6) WRAP BRACKET LEGS AROUND ANTENNA BASE.
- (5) SEE DWG 76319-01-000 FOR INSTALLATION OF TV ANTENNA.
- (4) 480 SATELLITE SYS W/RCVB, MANUAL.
- (3) FOR ITASCA UNITS ONLY.
- (2) ADD RUBBER BUMPER TO ROOF UNDER EACH END OF ANTENNA WHEN IN DOWN POSITION WHICH MAY COME IN CONTACT WITH ROOF.
- (1) 290 SOLAR PANEL.

- (18) USE WITH (05B)
- (14) NOT USE WITH (05B)
- (13) L-SERIES
- (12) G-SERIES
- (11) INSTALL WITH WIRES TOWARDS ROOF.
- (10) 265 CODE STANDARDS-CSA.
- (9) 181 CODE STANDARDS-USA.

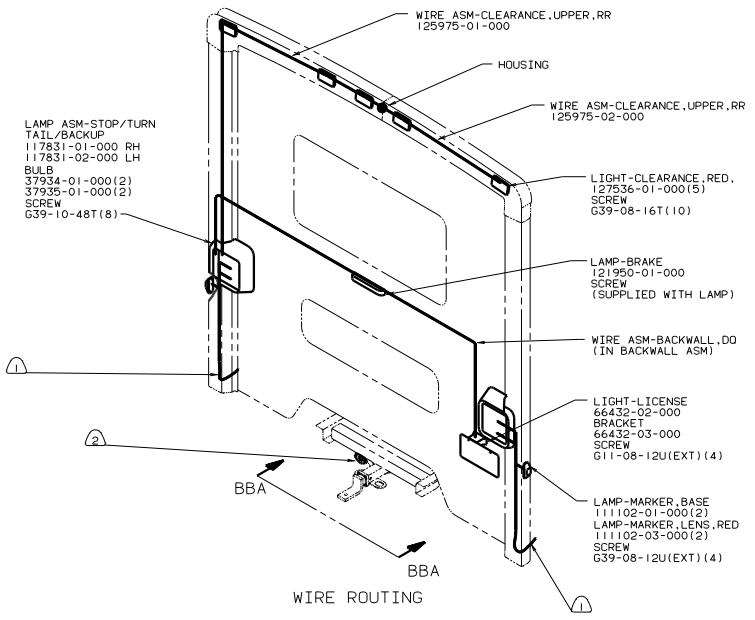
- (17) FOR 220V WIRING OF A/C WITH (1E6) SEE DETAIL ZD.
- (18) USE WITH (1E6)

FOR ELECTRICAL TORQUE SPECIFICATIONS SEE DWG NO. 128783-01-000

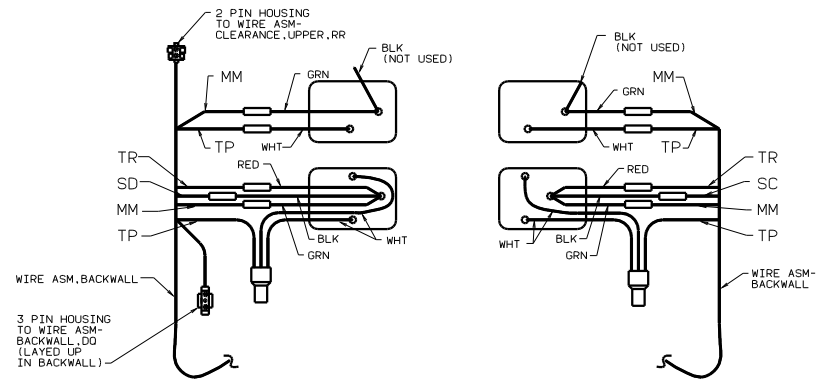
99 G & L33B  
 (1E6) A/C ROOF, EXPORT-TWO  
 (05B) EUROPEAN EXPORT PREP-PARTIAL  
 265 CANADIAN HOUSING AND MOTOR VEHICLE STANDARDS  
 181 USA STANDARDS

TITLE: WIRING INSTL-BODY(EX L)  
 SHEET 23 OF 25



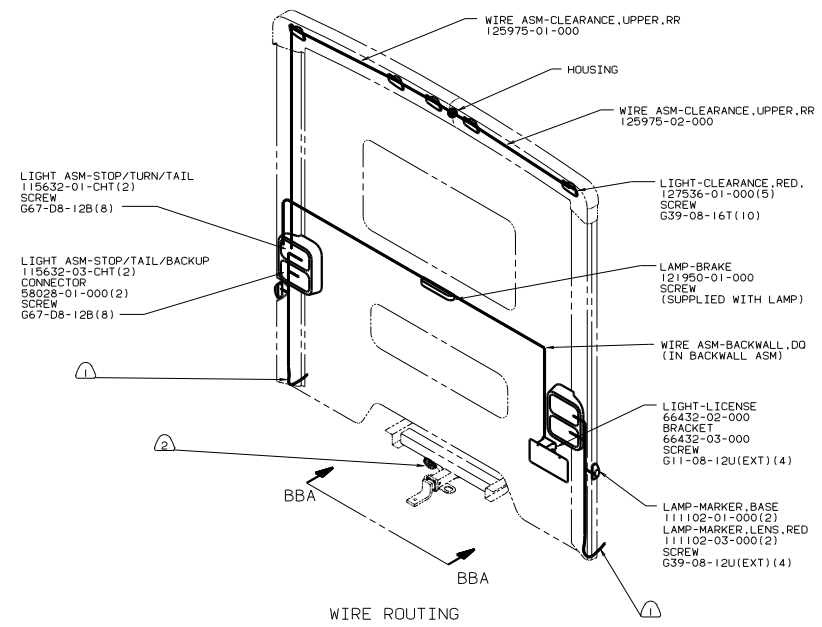


WIRE ROUTING



LEFT SIDE RIGHT SIDE

TAILLAMP WIRING



WIRE ROUTING

2 CONNECTOR-PLUG, TRAILER 113589-01-000 TO BE SUPPLIED LOOSE IN COACH WITH TRAILER TOW PACKAGE.

1 SEE WIRING INSTL-CHASSIS FOR ADDITIONAL INFORMATION.

NOTES:

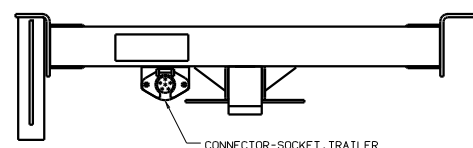
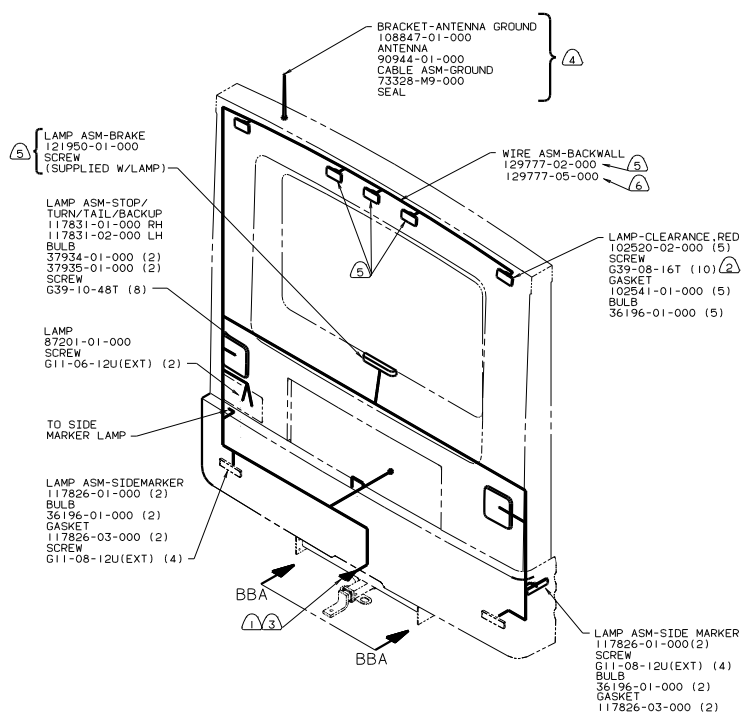
WINNEBAGO

ITASCA

FOR ELECTRICAL TORQUE SPECIFICATIONS SEE DWG NO 128783-01-000

**99 G338 ONLY**  
 EXTERIOR LIGHTING  
 265 CODE STANDARDS-CSA  
 IBI CODE STANDARDS-USA

TITLE	WIRING INSTL-BODY (EX-L)
NO. OF SHEETS	24 OF 25
SHEET NO	16
REV	129776



CONNECTOR-SOCKET, TRAILER  
SCREW  
101618-01-000 (EXT) (2)

VIEW BBA-BBA

- (6) USE WITH 058
- (5) NOT USED WITH 058
- (4) 26L REAR STEREO SYS.
- (3) TAPE BRANCH BACK ALONG WIRE ASM WITH TAPE 8363-01-000.
- (2) RIVET HEAD TO BE ON THE FIBERGLASS SIDE.
- (1) CONNECTOR-PLUG, TRAILER (113589-01-000) TO BE SUPPLIED LOOSE IN COACH WITH TRAILER TOW PACKAGE.

NOTES:

FOR ELECTRICAL  
TORQUE  
SPECIFICATIONS  
SEE DWG NO  
128783-01-000

**99 L338 ONLY**  
058 EUROPEAN EXPORT PREP-PARTIAL  
EXTERIOR LIGHTING  
265 CODE STANDARDS-CSA  
1B1 CODE STANDARDS-USA

TITLE WIRING INSTL-BODY (EX-L)	
DO NOT SCALE DRAWING	DATE
SHEET 25 OF 25	1.6 129776