



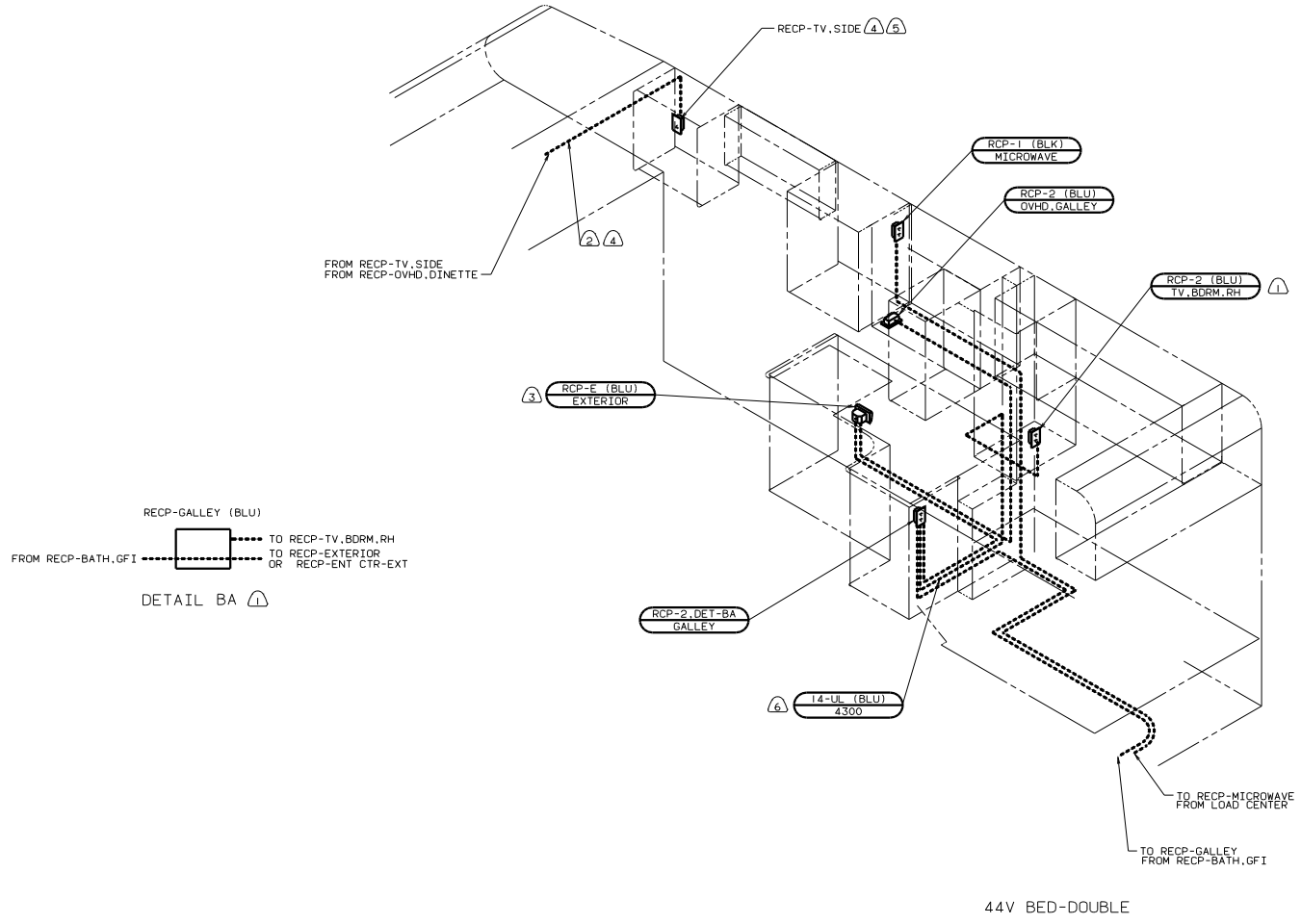
DANGER

Danger of electrical shock, burns or death. Always remove all power sources before attempting any repair, service or diagnostic work. Power can be present from shore power, generator, inverter or battery. All power sources must be disabled and secured before performing any service.



CAUTION

If you lack the skills, tools or equipment to perform diagnostic or repair work leave such work to an authorized Winnebago Industries dealer or other qualified shop.



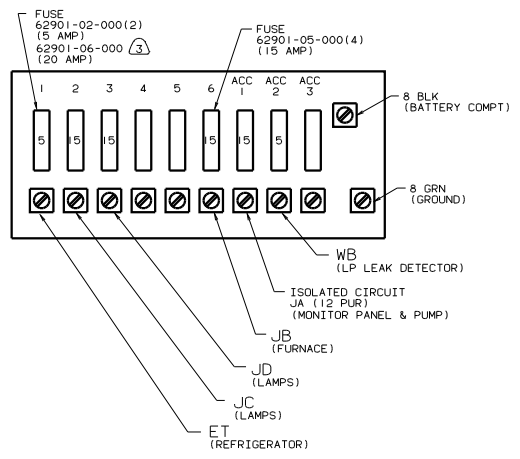
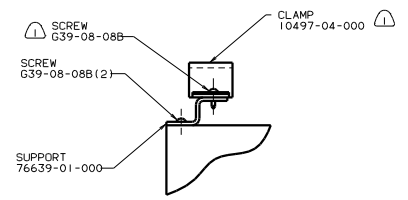
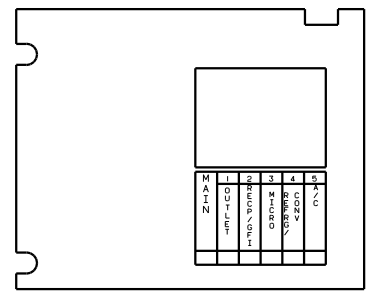
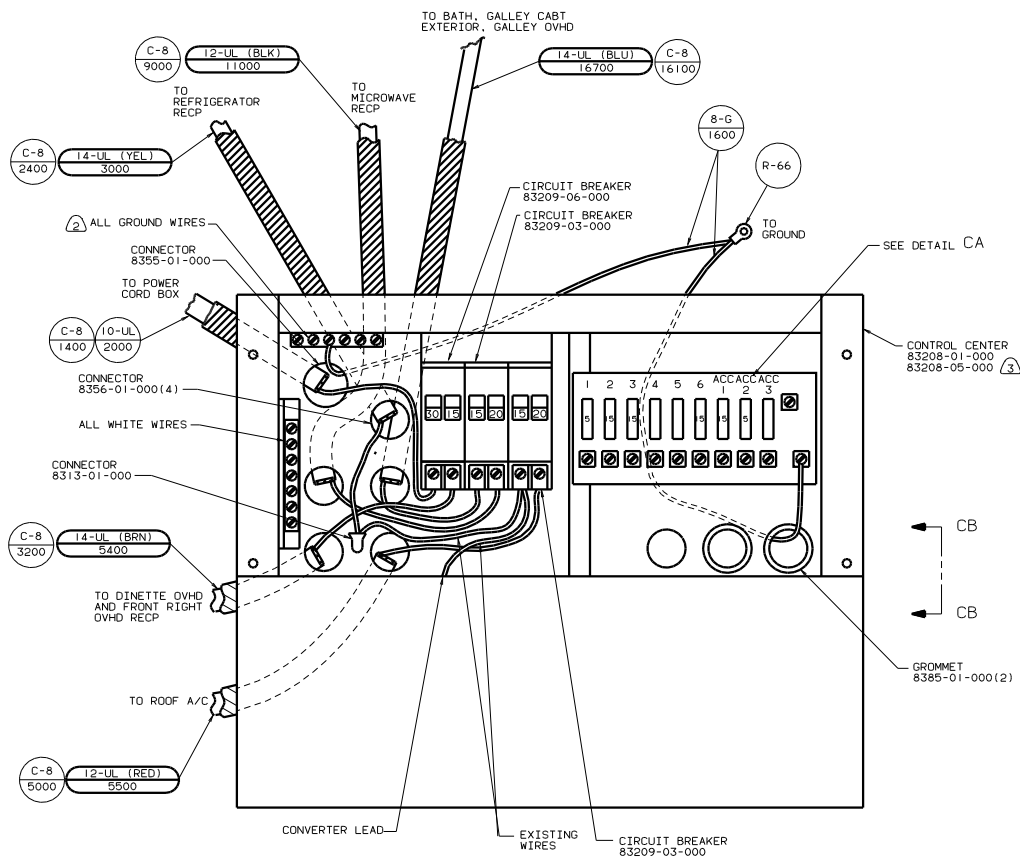
- NOTES:
- ① SEE WIRING INSTL-SIDE TV FOR ADDITIONAL INFORMATION.
 - ② NOT USED WITH 210 TV-19" W/VCR/SWITCHING SYSTEM. 78A TV-13" W/VCP, 12V, OR 42T TV-19" FRT & SW-SYS.
 - ③ NOT USED WITH 76C ENTERTAINMENT CTR-EXT. SEE ENTERTAINMENT CENTER COMPL FOR ADDITIONAL INFORMATION.
 - ④ WIRE ROUTED IN ROOF.
 - ⑤ 06U EXPORT UPGRADE PKG.

FOR ELECTRICAL TORQUE SPECIFICATIONS SEE DWG NO. 128783-01-000

FOR ELECTRICAL CALLOUTS SEE DWG NO. 121339-01-000

99 324W
 1B1 USA STANDARDS
 04L JAPAN EXPORT PKG

TITLE		DWG NO.	
WIRING INSTL-BODY (110R30US)		129649	
SHEET 2 OF 16		1E	



- 3 O4L JAPAN EXPORT PKG.
- 2 ALL GROUND WIRES TO BE COVERED WITH TUBING 8041-02-000.
- 1 FASTEN ALL WIRES TO SUPPORT. USE ONE SCREW PER CLAMP.

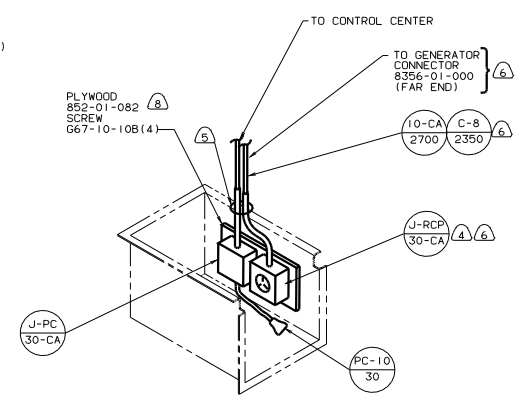
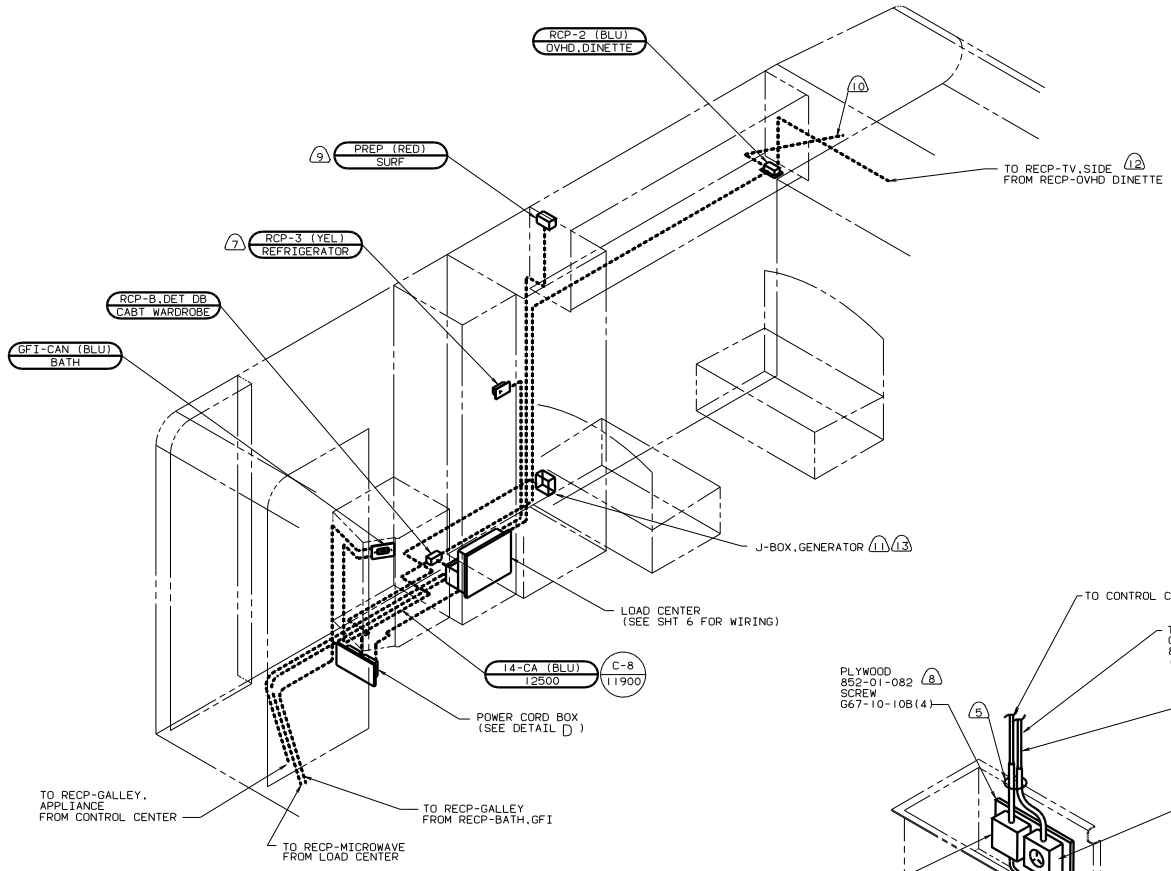
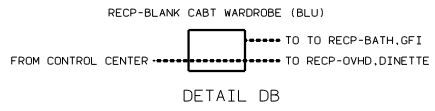
FOR ELECTRICAL TORQUE SPECIFICATIONS SEE DWG NO. 128783-01-000

FOR ELECTRICAL CALLOUTS SEE DWG NO. 121339-01-000

99 324W
O4L JAPAN EXPORT PKG
IBI USA STANDARDS

WIRING INSTL-BODY(30 CC US)

129649



44V BED-DOUBLE

- 12 NOT USED WITH 210 TV-19" W/VCR/SWITCHING SYSTEM, 78A TV-13" W/VCP, 12V, OR 42T TV-19" FRT & SW-SYS.
 - 11 SEE GENERATOR INSTL-FOR ADDITIONAL INFORMATION.
 - 10 WITH 210 OR 42T SEE WIRING INSTL-TV/VCR,FRONT FOR ADDITIONAL INFORMATION.
 - 9 WITHOUT 29D A/C ROOF MOUNT-13,500 BTU.
 - 8 PAINT ALL EXPOSED SURFACES BLACK WITH 106112-01-000.
 - 7 LOCATE REFRIGERATOR RECEPTACLE ON TIEDOWN BRACKET.
 - 6 40N GENERATOR-4,000 WATT ONAN MICROLITE GAS.
 - 5 SEAL WITH BEDDING COMPOUND 69639-01-000.
 - 4 INSTALL RECPTACLE WITH GROUND TOWARD OUTBOARD SIDE OF VEHICLE.
3. ALL GROUND WIRES TO BE COVERED WITH TUBING 8041-02-000.
2. ALL 110V WIRES ARE TO BE CLAMPED WITH CLAMP 10495-01-000 OR CLIP 80734-01-000 EVERY 1200. USE SCREW G67-10-12B UNLESS OTHERWISE SPECIFIED.

- 14 144 REFRIGERATOR/FREEZER-DOUBLE DOOR.
- 13 JUNCTION BOX TO BE MOUNTED AS HIGH AS PRACTICALLY POSSIBLE WITHIN DINETTE COMPARTMENT, ON REFRIGERATOR WALL.

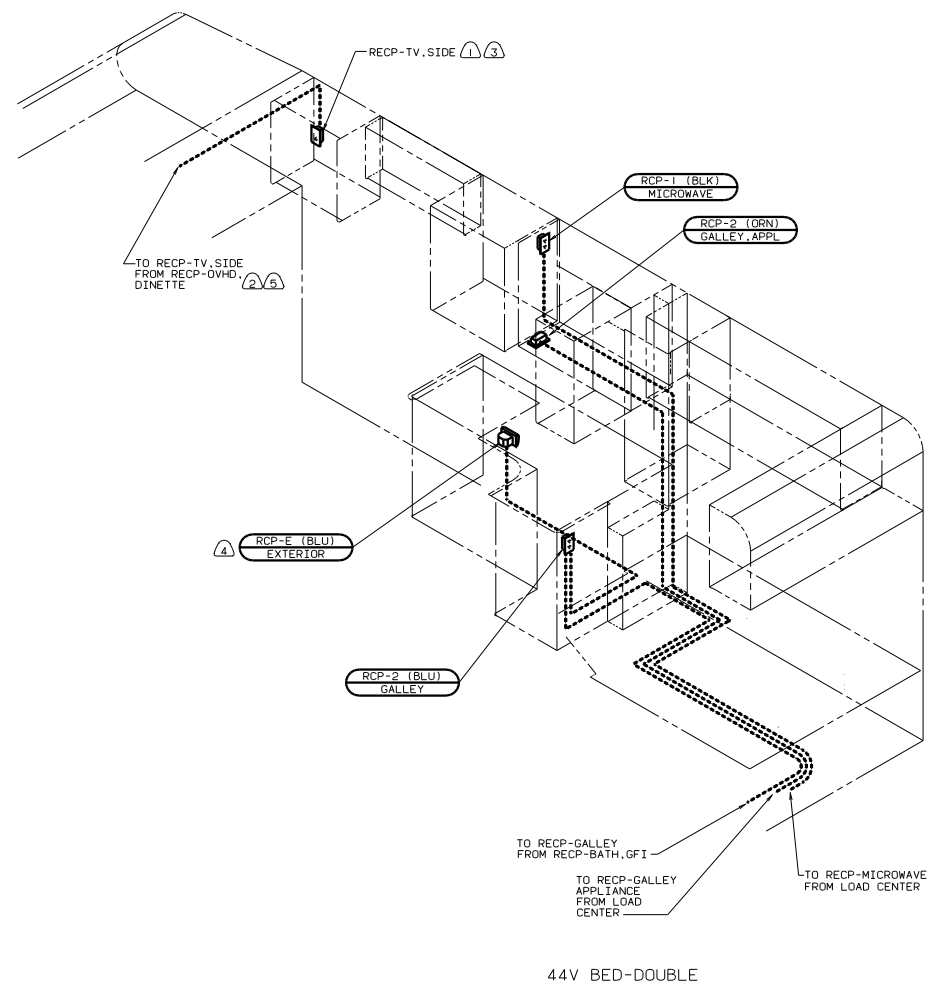
NOTES:

X-X FOR ELECTRICAL CALLOUTS SEE DWG NO. 121339-01-000

FOR ELECTRICAL TORQUE SPECIFICATIONS SEE DWG NO. 128783-01-000

99 324W
265 CANADIAN HOUSING AND MOTOR VEHICLE STANDARDS

FILE: WIRING INSTL-BODY(110130CSA)
SHEET 4 OF 16



- ④ WITHOUT 76C EXTERIOR ENTERTAINMENT CENTER W/CASSETTE. SEE ENTERTAINMENT CENTER CDML FOR ADDITIONAL INFORMATION.
- ③ SEE WIRING INSTL-SIDE TV FOR ADDITIONAL INFORMATION.
- ② WIRE ROUTED IN ROOF.
- ① NOT USED WITH 210 TV-19" W/VCR/SWITCHING SYSTEM, 78A TV-13" W/VCP, 12V, OR 42T TV-19" FRT & SW-SYS.

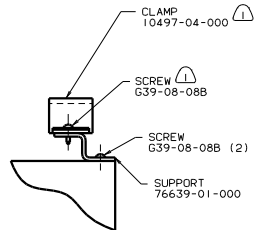
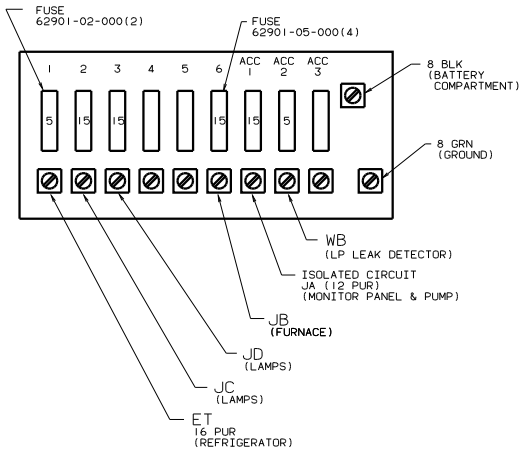
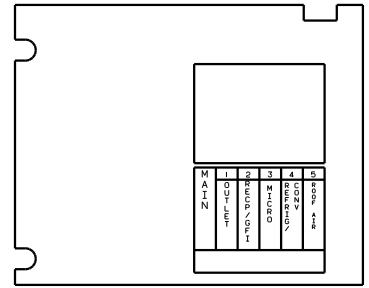
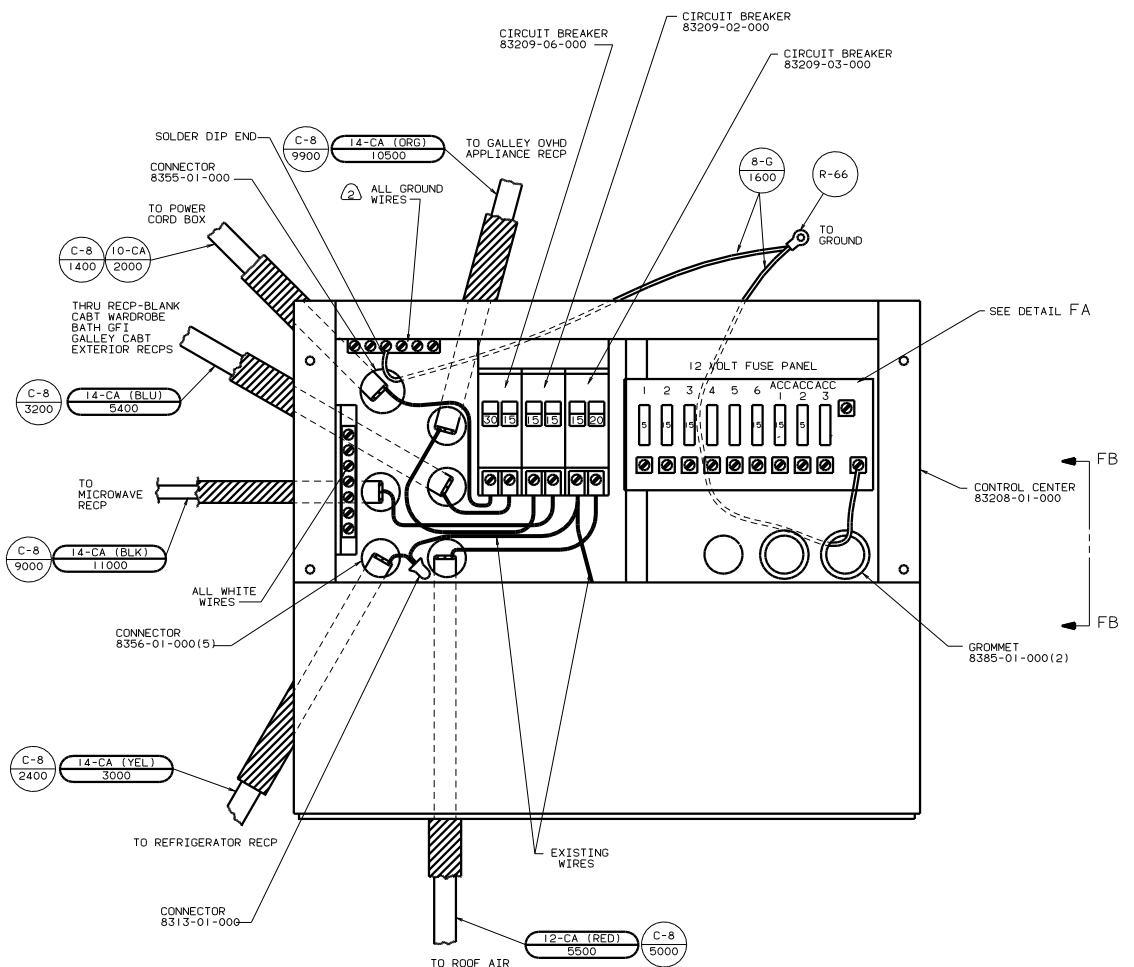
NOTES:

FOR ELECTRICAL CALLOUTS SEE DWG NO. 121339-01-000

FOR ELECTRICAL TORQUE SPECIFICATIONS SEE DWG NO. 128783-01-000

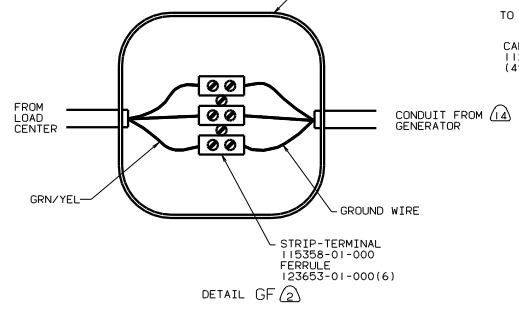
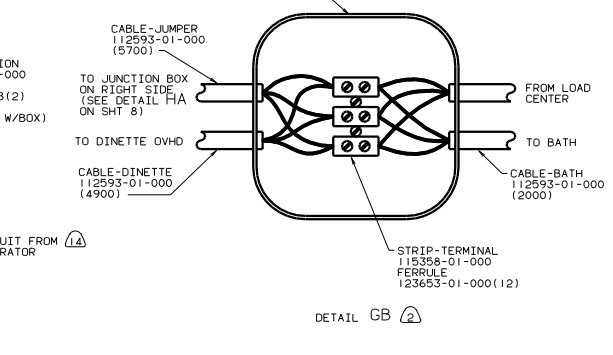
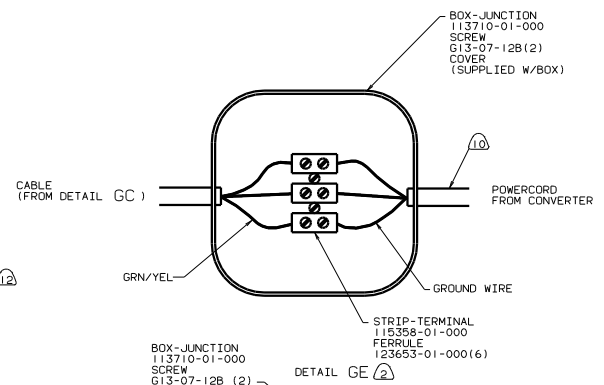
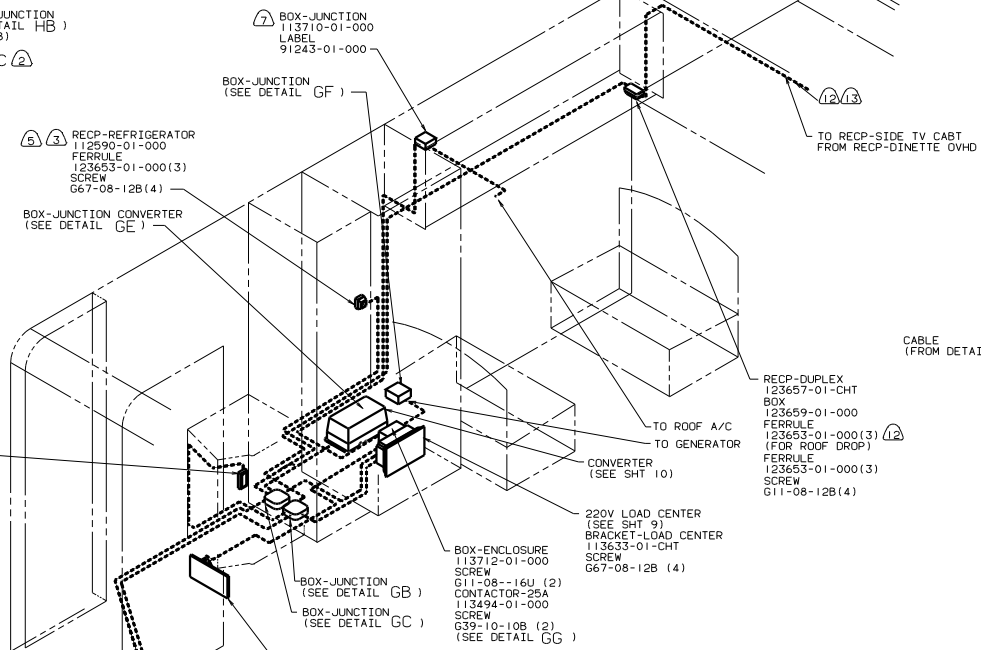
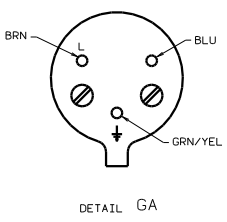
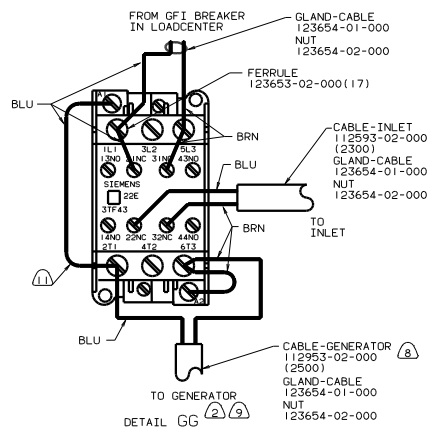
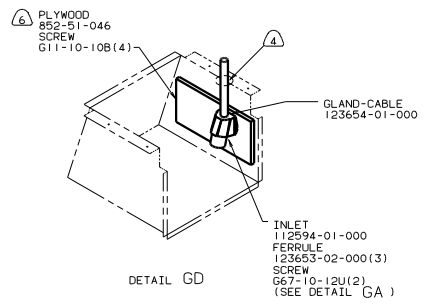
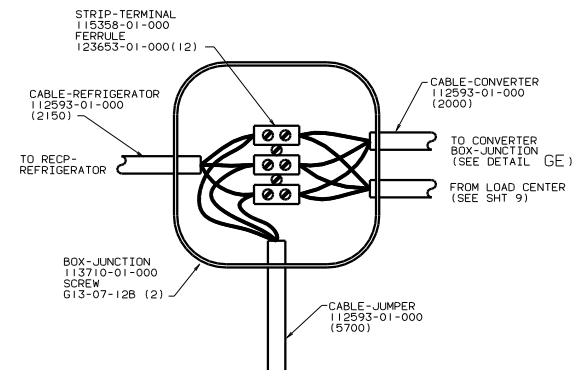
99 324W
265 CANADIAN HOUSING AND MOTOR VEHICLE STANDARDS

TITLE		DRAWING NO.	
WIRING INSTL-BODY(110R30CSA)		129649	
SCALE	SHEET	TOTAL SHEETS	REV
1:1	5 of 16		1E



(2) ALL GROUND WIRES TO BE COVERED WITH TUBING 8041-02-000.
 (1) FASTEN ALL WIRES TO SUPPORT. USE ONE SCREW PER CLAMP.

FOR ELECTRICAL TORQUE SPECIFICATIONS SEE DWS NO. 128783-01-000	FOR CANADIAN HOUSING AND VEHICLE STANDARDS CALL US SEE DWS NO. 121339-01-000
99 324W 129649	

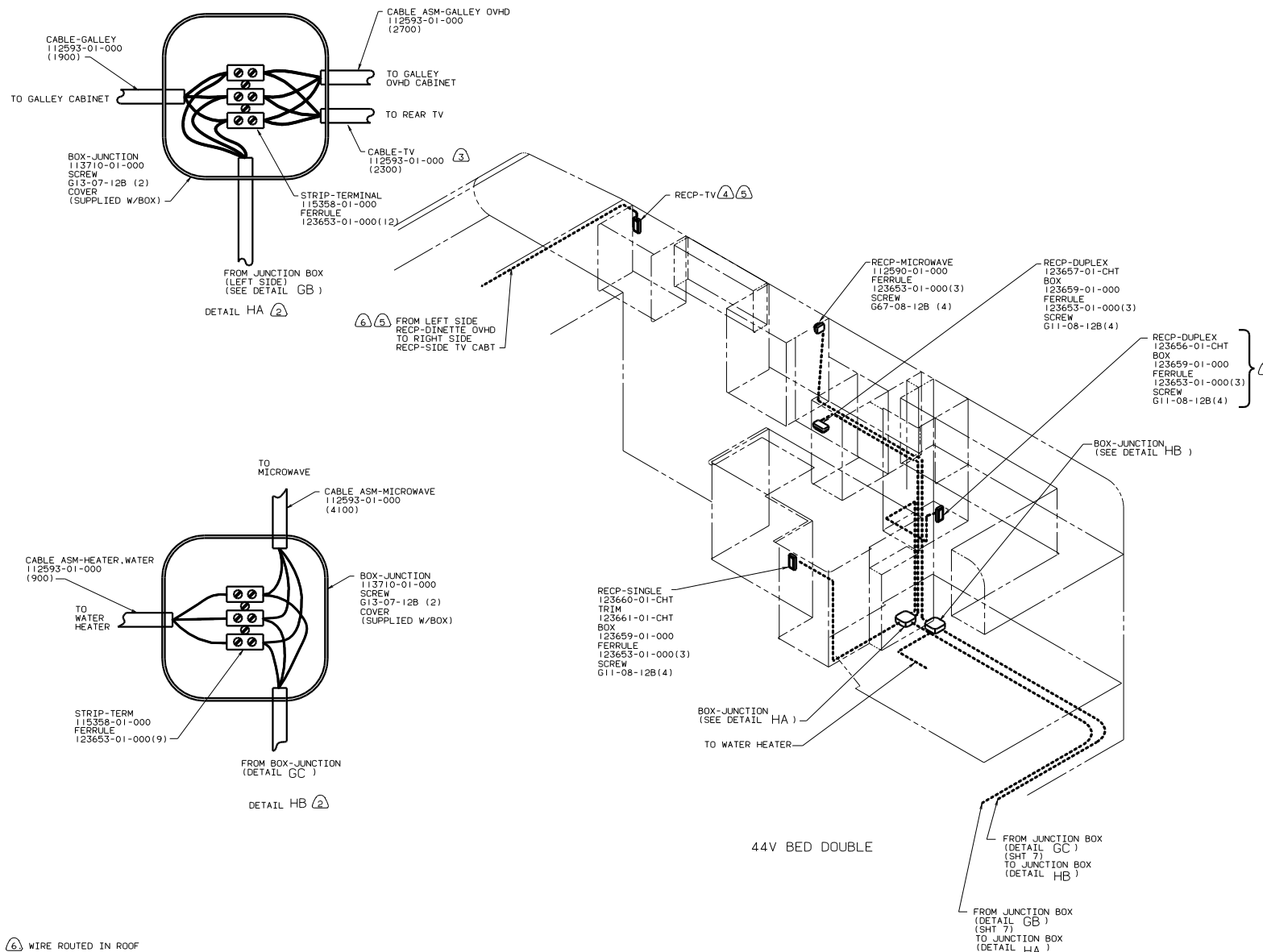


- 14 SEE GENERATOR INSTL-FOR ADDITIONAL INFORMATION.
- 13 WIRE ROUTED IN ROOF.
- 12 NOT USED WITH 210 TV-19" W/VCR/SWITCHING SYSTEM
42T TV-19" FRT & SW-SYS.
78A TV-13" W/VCP. 12W.
- 11 USE CABLE 112593-02-000 TO MAKE JUMPER WIRES.
- 10 CUT PLUG OFF POWER CORD AND ADD SPLICE BEFORE HARDWIRING TO TERMINALS.
- 9 GRN/YEL WIRES GO ON GROUND LUG.
- 8 40N GENERATOR-4000 WATT ONAN MICROLITE GAS.
- 7 WITHOUT FACTORY A/C.
- 6 PAINT ALL EXPOSED SURFACES BLACK WITH 106112-01-000.
- 5 LOCATE TOP OF REFRIGERATOR RECEPTACLE 350 ABOVE SHELF.
- 4 SEAL WITH BEDDING COMPOUND 69639-01-000.
- 3 MOUNT TRANSFORMER 125570-01-000 IN REFRIGERATOR COMPARTMENT WITH SCREW G39-10 10B(4) AND PLUG REFRIGERATOR INTO TRANSFORMER AND PLUG TRANSFORMER INTO RECEPTACLE.
- 2 ALL WIRES ARE TO BE CLAMPED WITH CLAMP 10495-02-000 200 OF OUTLET BOXES AND SPLICES. USE SCREW G67-10-12B.
- 1 ALL WIRES TO BE CLAMPED WITH CLAMP 10495-01-000, 10495-02-000 OR CLIP 80734-01-000 EVERY 600. USE SCREW G67-10-12B UNLESS OTHERWISE SPECIFIED.

FOR ELECTRICAL TORQUE SPECIFICATIONS SEE DWG NO. 128783-01-000

99 324W
03T EUROPEAN EXPORT
PREP PACKAGE

FILE	129649
WIRING INSTL-BODY(220L25EUR)	
NO. OF SHEETS	16
SHEET	7
REV	1
DATE	129649



44V BED DOUBLE

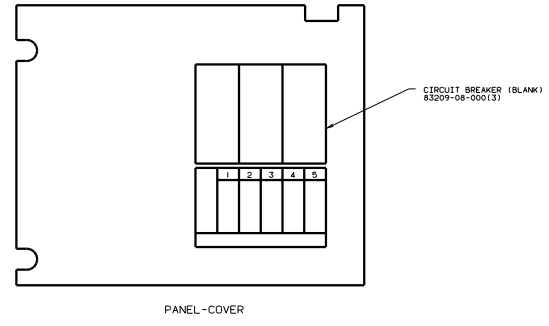
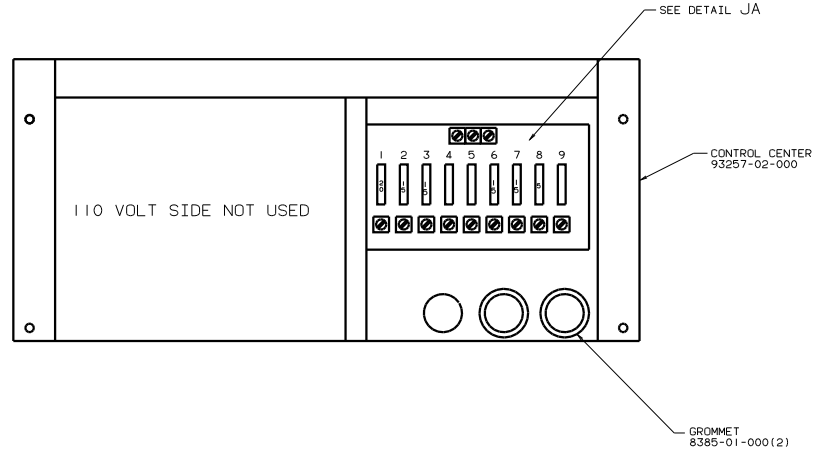
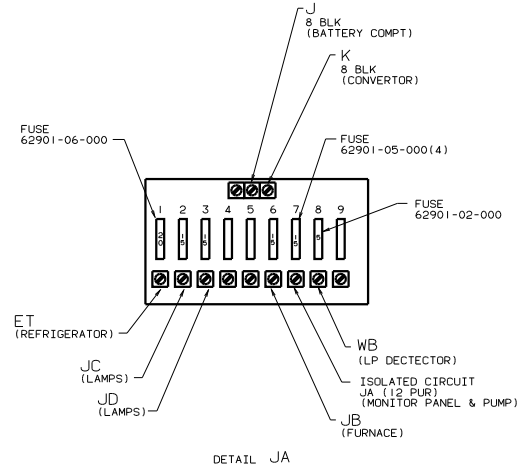
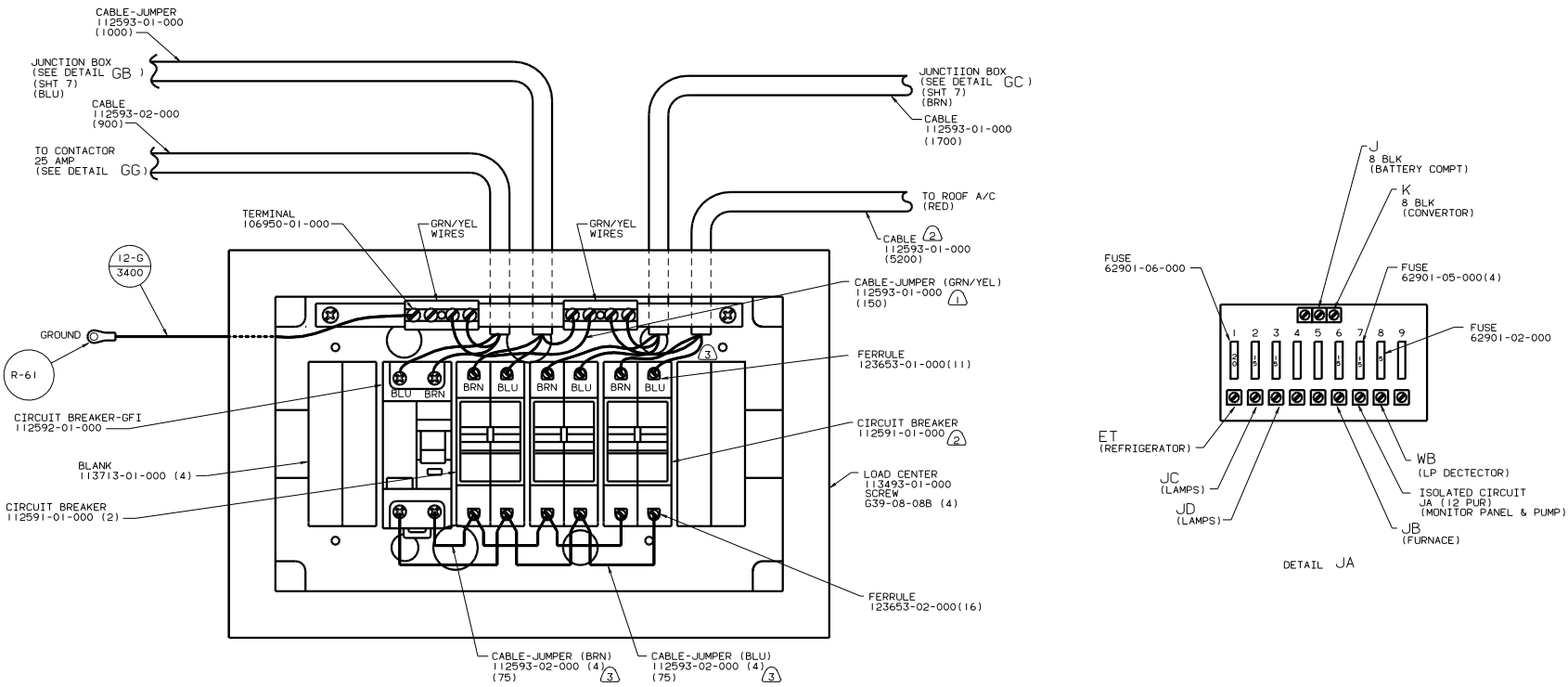
- ⑥ WIRE ROUTED IN ROOF
- ⑤ WITHOUT 210 TV-19" W/VCR/SWITCHING SYSTEM
42T TV-19" FRT & SW-SYS.
78A TV-13" W/VCP, 12V.
- ④ SEE WIRING INSTL-TV,VCR SIDE FOR ADDITIONAL INFORMATION.
- ③ 06U EXPORT UPGRADE PKG.
- ② ALL WIRES ARE TO BE CLAMPED WITH CLAMP 10495-02-000 200 OF OUTLET BOXES AND SPLICES. USE SCREW G67-10-12B.
- 1. ALL WIRES TO BE CLAMPED WITH CLAMP 10495-01-000, 10495-02-000 OR CLIP 80734-01-000 EVERY 600. USE SCREW G67-10-12B UNLESS OTHERWISE SPECIFIED.

NOTES:

FOR ELECTRICAL TORQUE SPECIFICATIONS SEE DWG NO. 128783-01-000

99 324W
03T EUROPEAN EXPORT
PREP PACKAGE

FILE	WIRING INSTL-BODY(220R25EUR)
NO. OF SHEETS	16
SHEET	8 OF 16
REV	1
DATE	129649



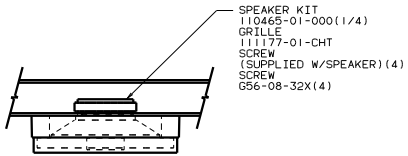
- NOTES:**
- ③ BROWN WIRE ARE LINE LOAD
BLUE WIRES ARE NEUTRAL.
 - ② 29D A/C ROOF MOUNT-13,500 BTU.
 - ① ALL GRN/YEL WIRES GO TO GROUND BAR.

FOR ELECTRICAL TORQUE SPECIFICATIONS SEE DWG NO. 128783-01-000

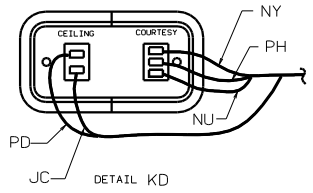
FOR ELECTRICAL CALLOUTS SEE DWG NO. 121339-01-000

99 324W
03T EUROPEAN EXPORT
PREP PACKAGE

TITLE		WIRING INSTL-BODY(25 CC EUR)	
DATE	BY	DATE	BY
12/16/03	JL	12/16/03	JL
SHEET 9 OF 16		129649	



VIEW KA-KA



DETAIL KD

- SWITCH 89308-01-CHT
- 89308-02-CHT
- SWITCH-PLATE 98351-02-CHT
- SPACER 95186-01-CHT
- SCREW G11-06-10J(2)
- (SEE DETAIL KD)

- SWITCH-PLATE 98351-01-CHT
- SWITCH 89308-01-CHT
- SPACER 95186-01-CHT
- SCREW G11-06-16J(2)

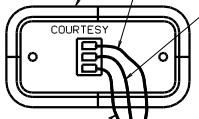
TO WIRE ASM-CHASSIS
TO GROUND

- WIRE ASM-FURNACE GAS LAMP 107574-02-000

- WIRE ASM-COACH 130011-01-00
- 130011-02-000

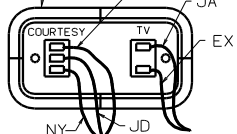
TO REAR OVHD LAMPS
WIRE ASM-LEFT TO RIGHT SIDE
WIRE ASM-MAIN HOLDING 96450-01-000

- SWITCH-COURTESY 89308-02-CHT
- SWITCH-TV 89308-01-CHT
- SWITCH-PLATE 98351-01-CHT
- SCREW G11-06-16U(2)



DETAIL KB (W/O SIDE TV CABT)

- SWITCH-COURTESY 89308-02-CHT
- SWITCH-TV 89308-01-CHT
- SWITCH-PLATE 98351-15-CHT
- SCREW G11-06-16U(2)



DETAIL KB (WITH SIDE TV CABT)

- WALLPLATE-TV 86784-01-CHT
- 86784-03-CHT
- SCREW G12-06-08U(2)

- LAMP-BUNK 98024-05-CHT
- LAMP 104173-01-CHT
- SCREW G11-08-20B(4)
- CONNECTOR 58028-01-000(2)

- WASHER-PLASTIC 87080-02-CHT(2)
- SCREW G67-08-10U(4)

- WIRE ASM-VENT POWERED 105010-01-000

SEE DETAIL KF

WIRE ASM-ROOF FRONT TO RIGHT SIDE

- COVER-BLANK 84099-02-CHT
- SCREW G12-06-08U(2)

- THERMOSTAT 115764-01-CHT
- LAMP 81087-01-000
- (SEE DETAIL KE)

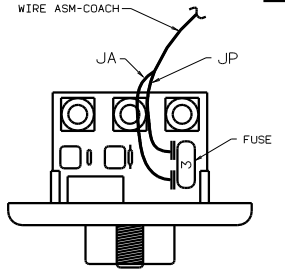
CONVERTER (SEE DETAIL KC)

LCR-1

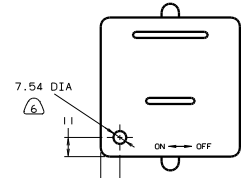
- DETECTOR-LP GAS 103613-03-000
- SCREW G68-06-10U(2)

SEE DETAIL JA (SHT 8)
WIRE ASM-AUX HOLDING 96451-01-000

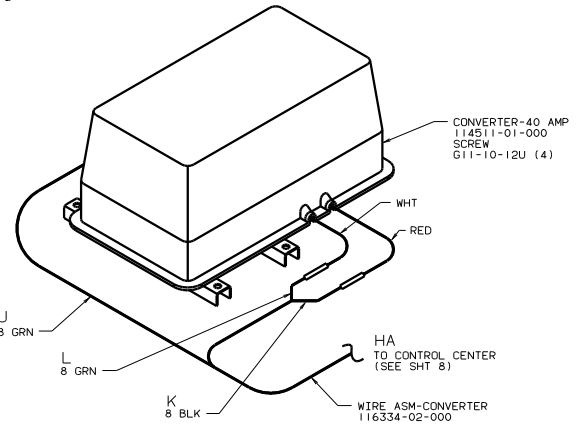
- SWITCH-LP DETECTOR 89308-01-CHT
- PLATE 98351-01-CHT
- SCREW G11-06-10J(2)
- WIRE ASM-LP DETECTOR 115733-01-000



DETAIL KF



DETAIL KE (LIGHT MOUNTING HOLE)



DETAIL KC (TO BE INSTALLED ON SHELF BELOW WORDROBE)

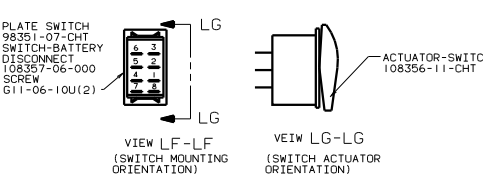
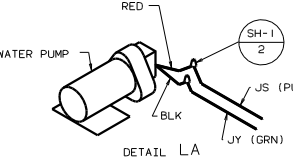
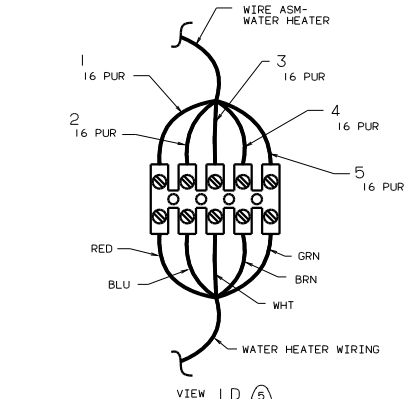
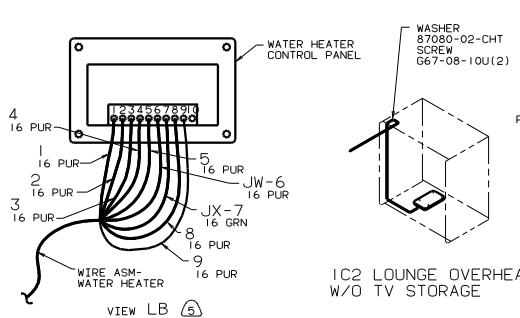
- 8 06U EXPORT UPGRADE PKG.
- 7 WITH OUT 03T WIE EXPORT PREP PACKAGE.
- 6 04L JAPAN EXPORT PACKAGE.
- 5 03T WIE EXPORT PREP PACKAGE.
- 4 WITH 210 TV-19" W/VCR/SWITCHING SYSTEM OR 42T TV-19" FRT & SW-SYS.
- 3 WITH 210 OR 42T SEE WIRING INSTL-TV/VCR.FRONT FOR ADDITIONAL INFORMATION.
- 2 41M EXPORT ROOF VENT-POWERED VENTILATOR FAN FRONT BUNK.
- 1 40F INVERTER-DC/AC. 130W.

FOR ELECTRICAL TORQUE SPECIFICATIONS SEE DWG NO. 128783-01-000

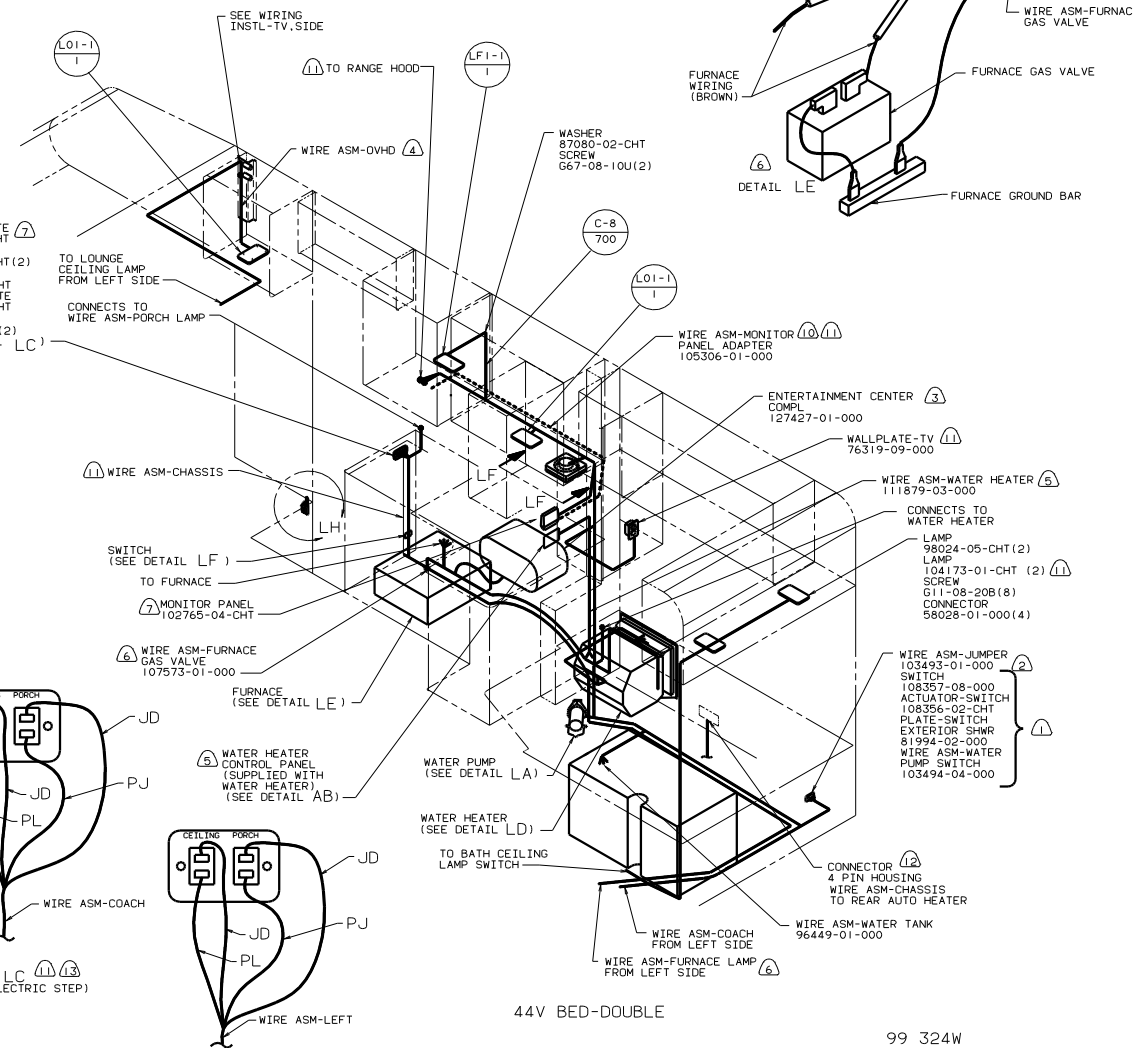
FOR ELECTRICAL CALLOUTS SEE DWG NO. 121339-01-000

99 324W
1B1 USA STANDARDS
265 CANADIAN HOUSING AND MOTOR VEHICLE STANDARDS

WIRING INSTL-BODY(12 L)
SHEET 10 OF 16



- 9) MOUNT SWITCH AND SPACER TO BLOCK ON JAMB. ADJUST HEIGHT TO MATCH MAGNET.
- 8) MOUNT MAGNET USING PILOT HOLE IN SCREEN DOOR FRAME. MOUNT WITH MAGNET TOWARD SWITCH.
- 7) WITHOUT 04L JAPAN EXPORT PACKAGE OR 03T EUROPEAN EXPORT PREP PACKAGE.
- 6) 04L JAPAN EXPORT PKG.
- 5) 03T EUROPEAN EXPORT PREP PACKAGE.
- 4) SEE CABT ASM-OVHD FOR PART NUMBER.
- 3) 76C EXTERIOR ENTERTAINMENT CENTER W/CASSETTE.
- 2) USE WITHOUT 64R EXTERIOR WASH STATION.
- 1) 64R EXTERIOR WASH STATION.
- 13) IE2 ENTRANCE STEP-ELECTRIC
- 12) 611 EXPORT REAR AUTO HEATER & MOTORAIID.
- 11) 06U EXPORT UPGRADE PKG.
- 10) DASHED LINE REPRESENTS WIRE ROUTE FROM MONITOR PANEL DROP TO RANGE HOOD W/MONITOR PANEL WITH 06U EXPORT UPGRADE PKG.



FOR ELECTRICAL TORQUE SPECIFICATIONS SEE DWG NO. 128783-01-000

FOR ELECTRICAL CALLOUTS SEE DWG NO. 121339-01-000

99 324W
1B1 USA STANDARDS
265 CANADIAN HOUSING AND MOTOR VEHICLE STANDARDS

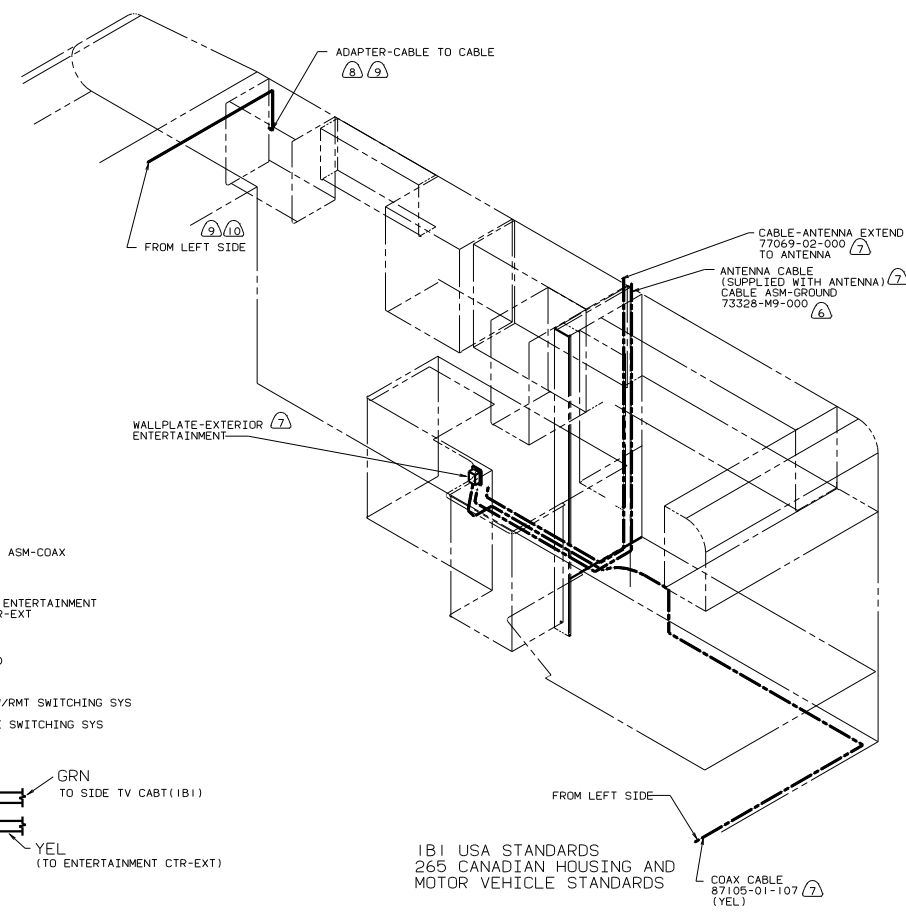
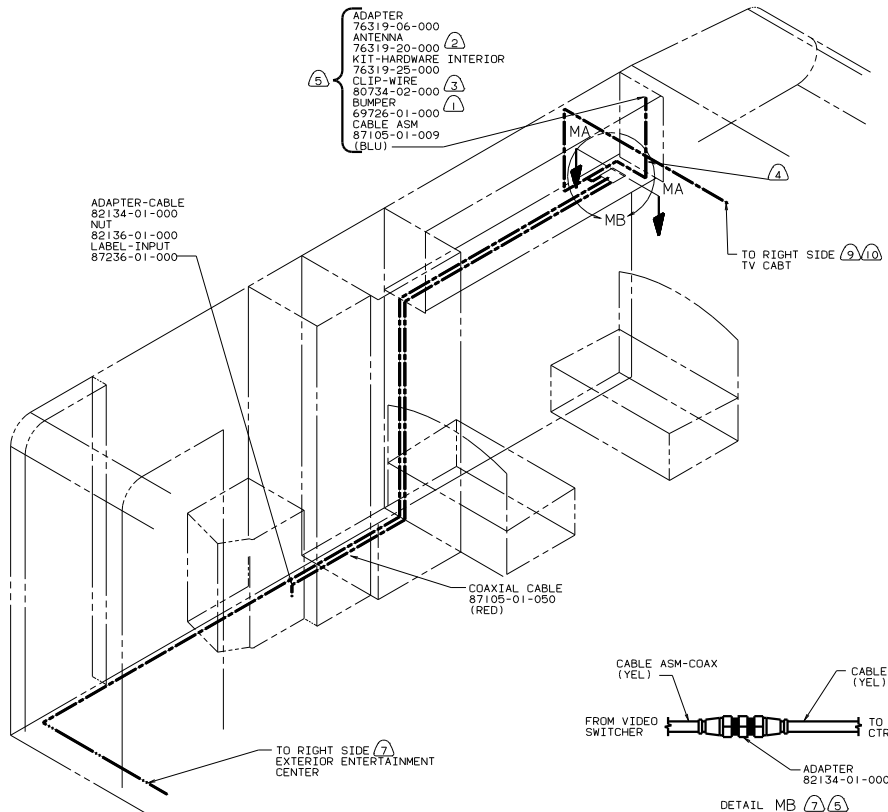
WIRING INSTL-BODY(12_R)

SHEET 11 OF 16

129649

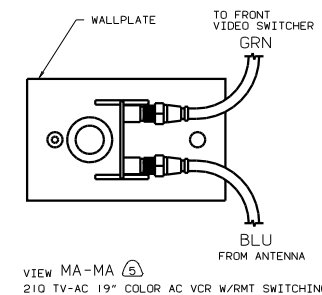
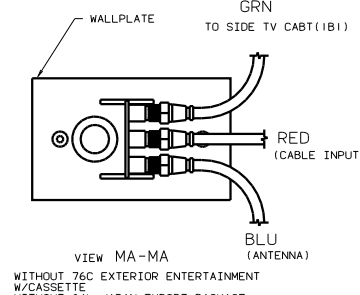
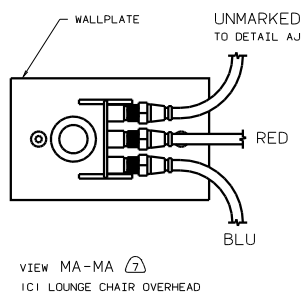
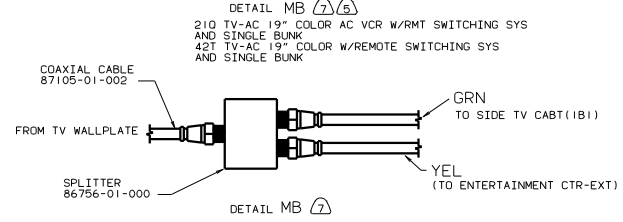
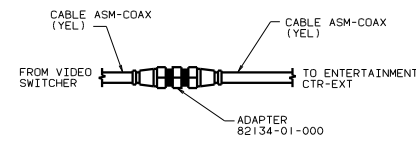
- ADAPTER 76319-06-000
- ANTENNA 76319-20-000 (2)
- KIT-HARDWARE INTERIOR 76319-25-000 (3)
- CLIP-WIRE 80734-02-000 (4)
- BUMPER 69726-01-000 (1)
- CABLE ASM 87105-01-009 (BLU)

- ADAPTER-CABLE 82134-01-000
- NUT 82136-01-000
- LABEL-INPUT 87236-01-000



IBI USA STANDARDS
265 CANADIAN HOUSING AND MOTOR VEHICLE STANDARDS
04L JAPAN EXPORT PKG
03T EUROPEAN EXPORT PREP PACKAGE

IBI USA STANDARDS
265 CANADIAN HOUSING AND MOTOR VEHICLE STANDARDS

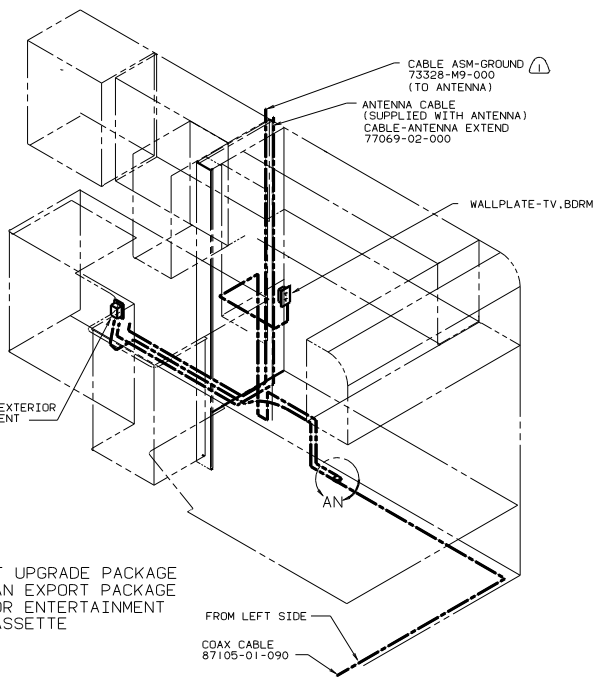
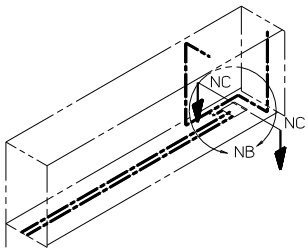


- (10) CABLE ROUTED IN ROOF.
- (2) NOT USED WITH FRONT ENTERTAINMENT CENTER (42T OR 210).
- (3) WITH SIDE TV. SEE WIRING INSTL-TV/VCR SIDE FOR ADDITIONAL INFORMATION.
- (7) WITH EXTERIOR ENTERTAINMENT CENTER (76C).
- (6) GROUND TOGETHER WITH EXTERIOR ENTERTAINMENT RADIO GROUND.
- (3) WITH FRONT TV. SEE WIRING INSTL-TV/VCR.FRONT FOR ADDITIONAL INFORMATION.
- (4) ADD 600 CONVOLUTED TUBING 41953-01-000 IN THIS AREA.
- (3) LOCATE TO RETAIN CABLE BUT NOT TO RESTRICT ANTENNA.
- (2) SEE DRAWING 76319-01-000 FOR INSTALLATION OF TV ANTENNA.
- (1) ADD RUBBER BUMPER TO ROOF UNDER EACH END OF ANTENNA IN DOWN POSITION WHICH MAY COME INTO CONTACT WITH ROOF.

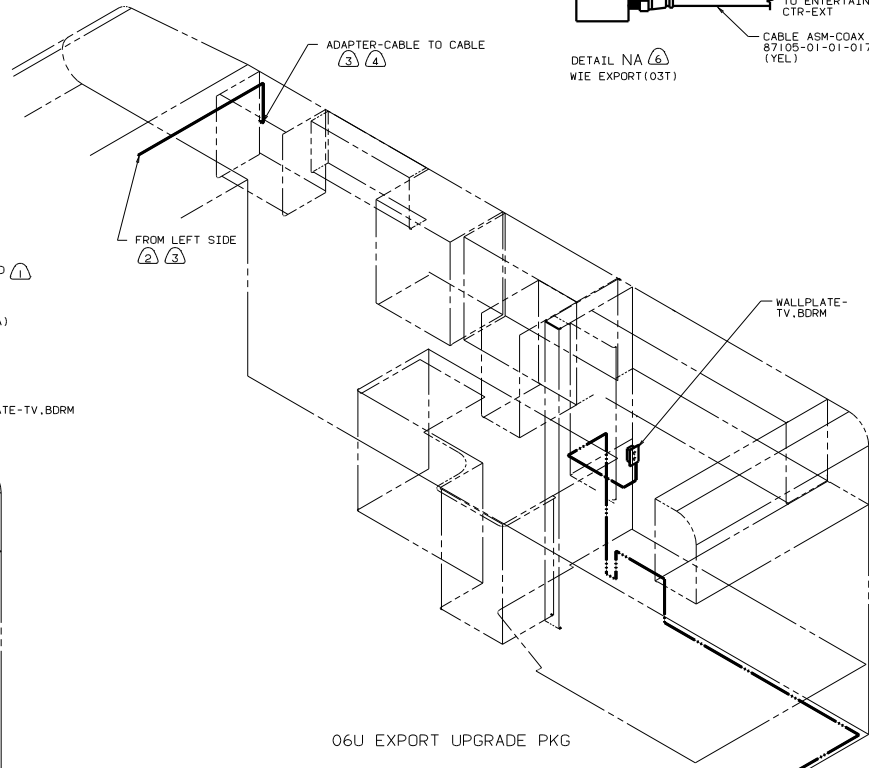
FOR ELECTRICAL TORQUE SPECIFICATIONS SEE DWG NO. 128783-01-000

99 324W

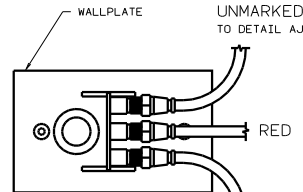
TITLE: WIRING INSTL-BODY(COAX)	
NO. OF SHEETS DRAWING	TOT. NO. OF SHEETS
SHEET 12 OF 16	16
DWG NO. 129649	



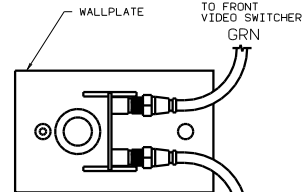
06U EXPORT UPGRADE PACKAGE
03T EUROPEAN EXPORT PACKAGE
76C EXTERIOR ENTERTAINMENT CENTER W/CASSETTE



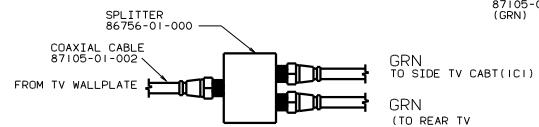
06U EXPORT UPGRADE PKG



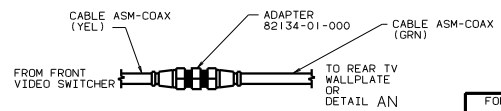
VIEW NC-NC (IC1 DINETTE OVERHEAD)



VIEW NC-NC (5)
210 TV-AC 19" COLOR AC VCR W/RMT SWITCHING SYS & SINGLE BUNK
42T TV-AC 19" COLOR W/REMOTE SWITCHING SYS & SINGLE BUNK



DETAIL NB



DETAIL NB (5)

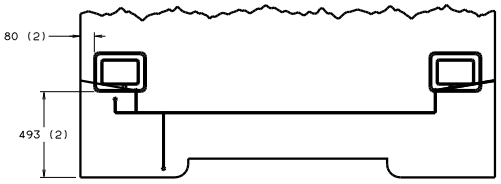
210 TV-AC 19" COLOR AC VCR W/RMT SWITCHING SYS & SINGLE BUNK
42T TV-AC 19" COLOR W/REMOTE SWITCHING SYS & SINGLE BUNK

FOR ELECTRICAL TORQUE SPECIFICATIONS SEE DWG NO. 128783-01-000

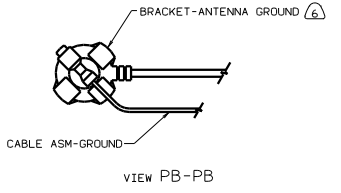
99 324W

WIRING INSTL-BODY(COAX R)
SHEET 13 OF 16

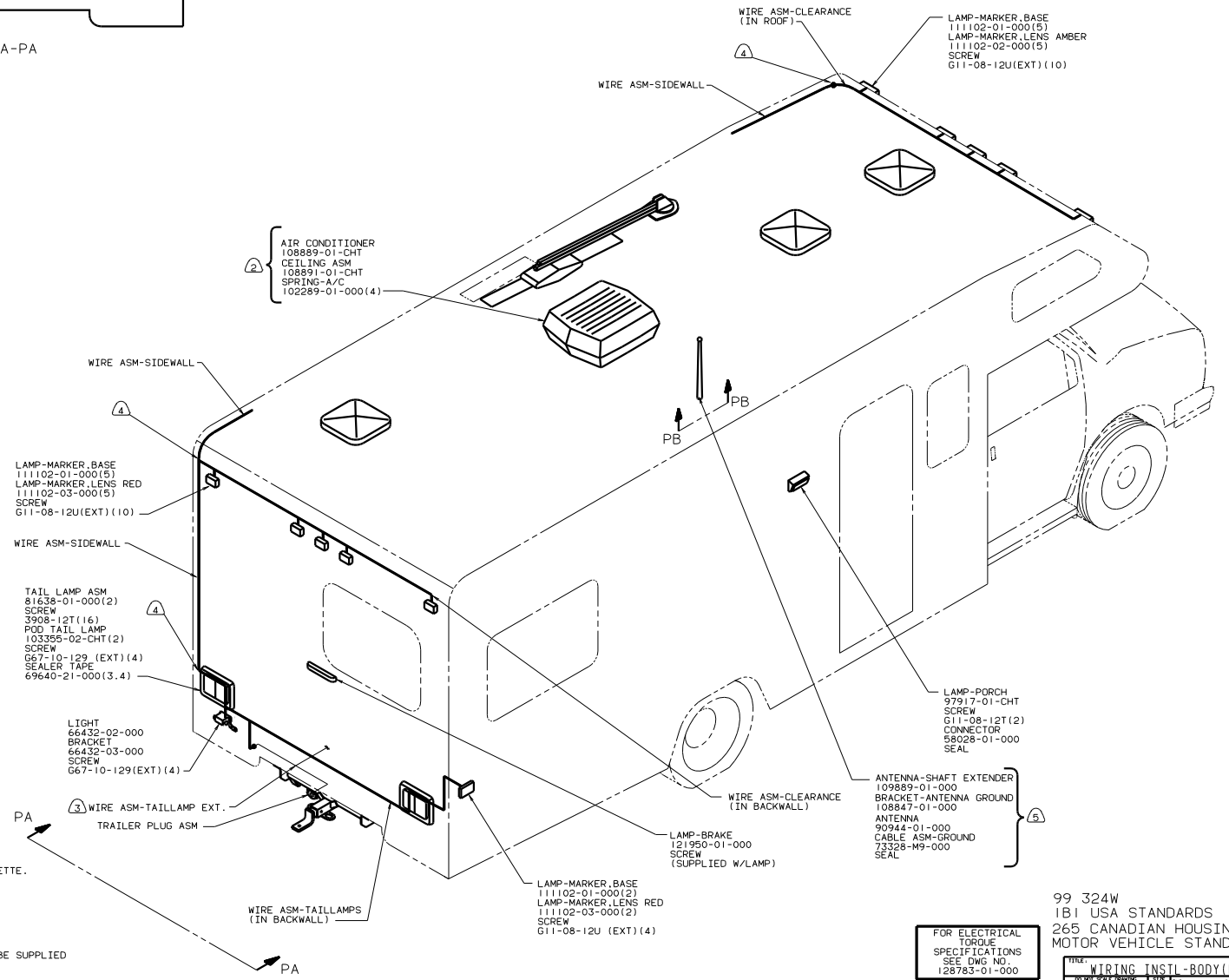
- NOTES:
- 6 76C EXTERIOR ENTERTAINMENT CENTER W/CASSETTE.
 - 5 WITH FRONT TV. SEE WIRING INSTL-TV/VCR,FRONT FOR ADDITIONAL INFORMATION.
 - 4 WITH SIDE TV. SEE WIRING INSTL-TV/VCR SIDE FOR ADDITIONAL INFORMATION.
 - 3 WITHOUT 210 OR 42T FRONT ENTERTAINMENT CENTER.
 - 2 CABLE ROUTED IN ROOF.
 - 1 GROUND TOGETHER WITH EXTERIOR ENTERTAINMENT RADIO GROUND.



VIEW PA-PA



VIEW PB-PB

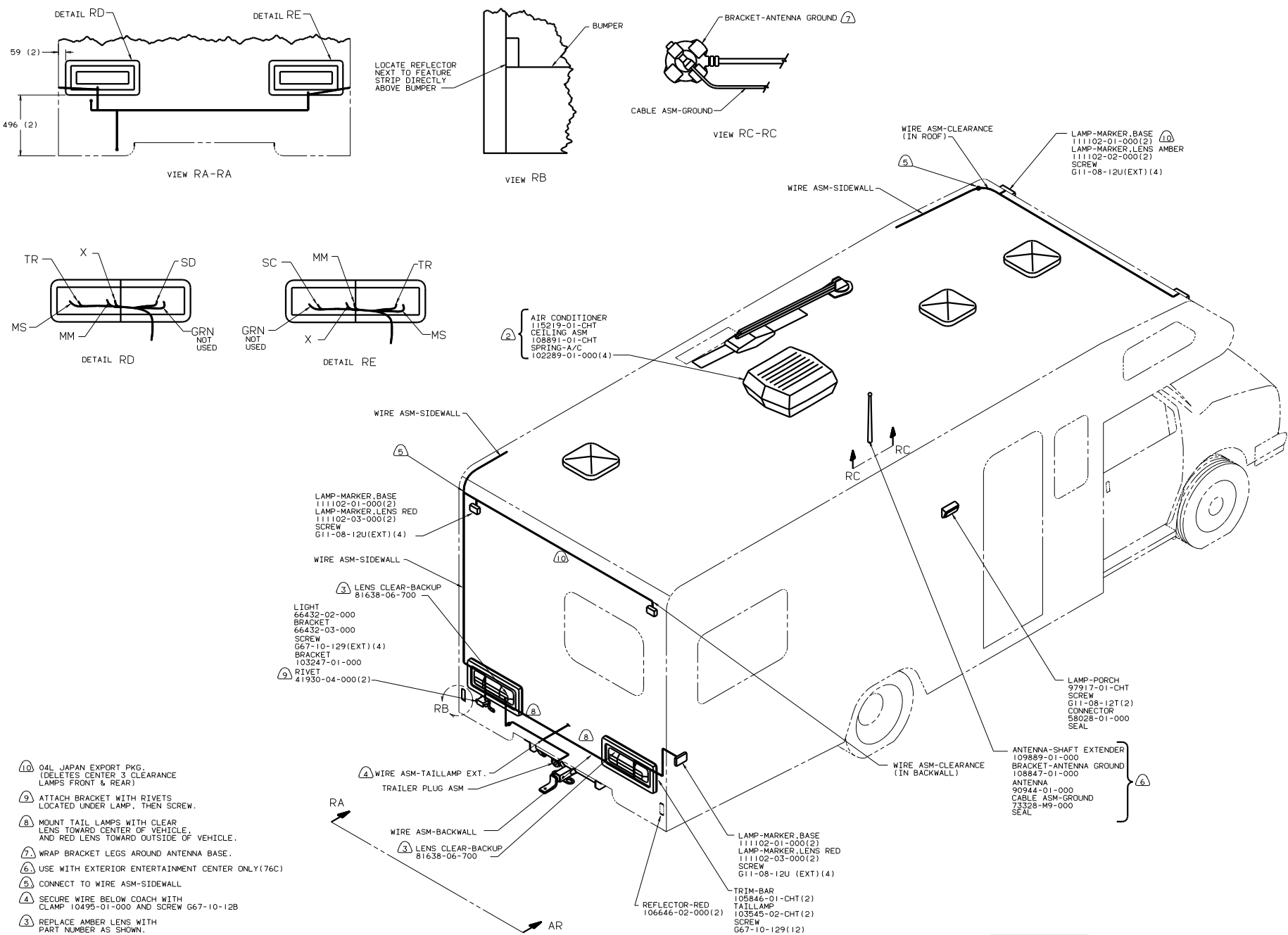


- ⑥ WRAP BRACKET LEGS AROUND ANTENNA BASE.
 - ⑤ 76C EXTERIOR ENTERTAINMENT CENTER W/CASSETTE.
 - ④ CONNECT TO WIRE ASM-SIDEWALL
 - ③ SECURE WIRE BELOW COACH WITH CLAMP 10495-01-000 AND SCREW G67-10-12B.
 - ② 29D A/C ROOF MOUNT 13,500 BTU.
1. CONNECTOR-PLUG, TRAILER 113589-01-000 TO BE SUPPLIED LOOSE IN COACH WITH TRAILER TOW PACKAGE.

FOR ELECTRICAL TORQUE SPECIFICATIONS SEE DWG NO. 128783-01-000

99 324W
 IBI USA STANDARDS
 265 CANADIAN HOUSING AND MOTOR VEHICLE STANDARDS

TITLE: WIRING INSTL - BODY (EX L)	
30 DAY SCALE DRAWING	FIG. NO. 1E
SHEET 14 OF 16	129649



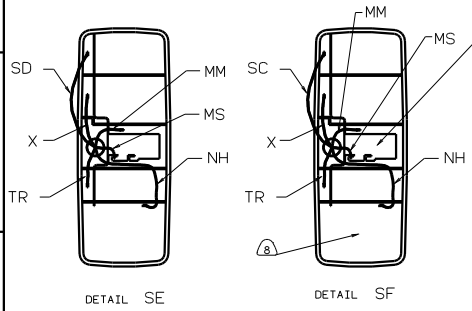
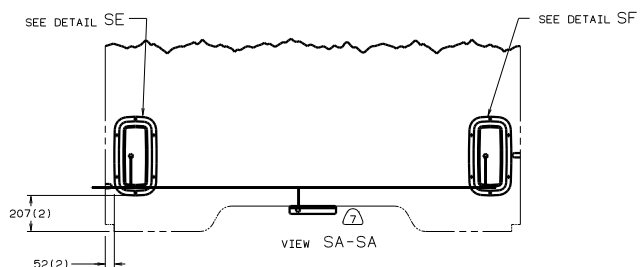
- ⑩ 04L JAPAN EXPORT PKG. (DELETES CENTER 3 CLEARANCE LAMPS FRONT & REAR)
- ⑨ ATTACH BRACKET WITH RIVETS LOCATED UNDER LAMP. THEN SCREW.
- ⑧ MOUNT TAIL LAMPS WITH CLEAR LENS TOWARD CENTER OF VEHICLE, AND RED LENS TOWARD OUTSIDE OF VEHICLE.
- ⑦ WRAP BRACKET LEGS AROUND ANTENNA BASE.
- ⑥ USE WITH EXTERIOR ENTERTAINMENT CENTER ONLY(76C)
- ⑤ CONNECT TO WIRE ASM-SIDEWALL
- ④ SECURE WIRE BELOW COACH WITH CLAMP 10495-01-000 AND SCREW G67-10-129
- ③ REPLACE AMBER LENS WITH PART NUMBER AS SHOWN.
- ② 250. A/C-ROOF MOUNT 14,800 BTU.

1. CONNECTOR-PLUG, TRAILER 113589-01-000 TO BE SUPPLIED LOOSE IN COACH WITH TRAILER TOW PACKAGE.

FOR ELECTRICAL TORQUE SPECIFICATIONS SEE DWG NO. 128783-01-000

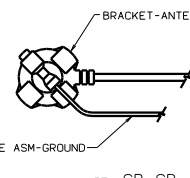
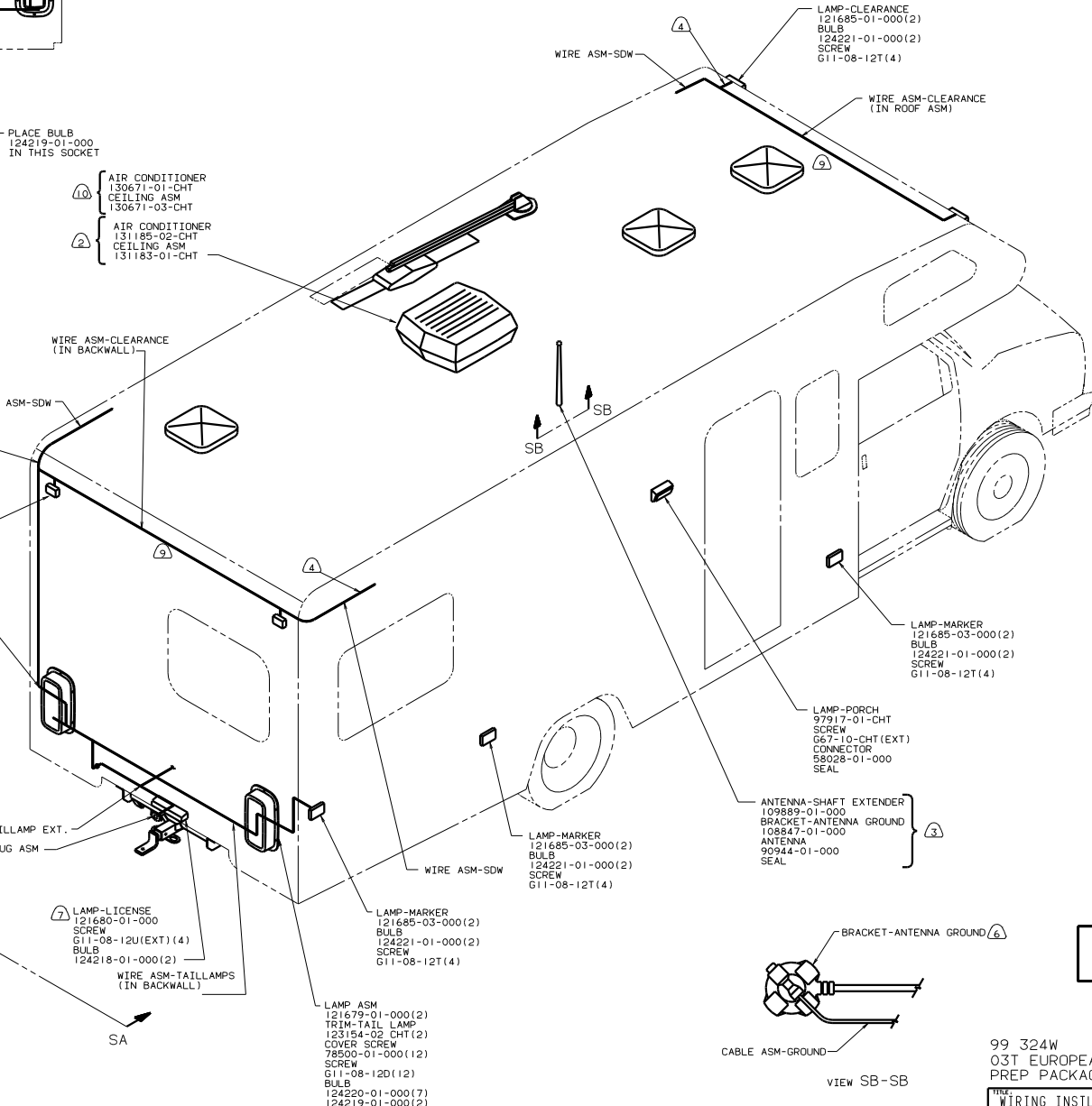
99 324W
04L JAPAN EXPORT PKG

TITLE: WIRING INSTL-BODY(EX I JAP)	
NO. 15	129649
SHEET 15	OF 16



- 10 IE5 ROOF-A/C EXPORT-ONE.
 9 O3T EXPORT DELETE (REMOVES CENTER 3 CLEARANCE LAMPS FRONT & REAR)
 8 DO NOT PUT A BULB IN THIS LAMP SOCKET.
 7 LAMP TO BE LOCATED ON BUMPER ASM. ROUTE AND SECURE WIRING ALONG HITCH ASM.
 6 WRAP BRACKET LEGS AROUND ANTENNA BASE.
 5 SECURE WIRE BELOW COACH WITH CLAMP 10495-01-000 AND SCREW G67-10-12B.
 4 CONNECT TO WIRE ASM-SIDEWALL
 3 USE WITH EXTERIOR ENTERTAINMENT CENTER ONLY(76C)
 2 O5G EXPORT ROOF AIR 13,500 BTU 220VAC.
 1. CONNECTOR-PLUG, TRAILER 113589-01-000 TO BE SUPPLIED LOOSE IN COACH WITH TRAILER TOW PACKAGE.

NOTES:
 Copyright 2005 Winnebago Industries, Inc.



FOR ELECTRICAL TORQUE SPECIFICATIONS SEE DWG NO. 128763-01-000

99 324W
 O3T EUROPEAN EXPORT
 PREP PACKAGE

FILE:	WIRING INSTL-BODY(EX L WIF)
NO. OF SHEETS:	16
SHEET NO.:	16
REV. NO.:	1
DATE:	129649